



# 2017 AUBURN GYMNASTICS

AUBURN ATHLETICS COMMUNICATIONS: 392 SOUTH DONAHUE DRIVE || AUBURN, AL 36830 || AUBURNTIGERS.COM || @AUBURNGYM

## 2017 GYMNASTICS SCHEDULE

0-10, 0-7 SEC

| Date        | Opponent            | Time (CT)/Result   |
|-------------|---------------------|--------------------|
| Jan. 6      | <b>OREGON STATE</b> | L, 195.275-195.575 |
| Jan. 13     | <b>GEORGIA*</b>     | L, 196.075-196.800 |
| Jan. 20     | at Kentucky*        | L, 195.800-197.100 |
| Jan. 27     | at Florida*         | L, 196.400-197.700 |
| Jan. 29     | vs. Alabama#        | L, 194.675-195.850 |
| Feb. 3      | <b>ARKANSAS*</b>    | L, 196.075-196.375 |
| Feb. 10     | vs. Oklahoma^       | L, 195.725-198.075 |
| Feb. 17     | at Alabama*         | L, 196.450-197.350 |
| Feb. 24     | <b>LSU*</b>         | L, 196.100-197.675 |
| March 3     | at Missouri*        | L, 195.350-197.200 |
| March 10    | <b>PITTSBURGH</b>   | W, 196.300-194.200 |
| March 18    | SEC ChampionshipsS  | TBA                |
| April 1     | NCAA Regional%      | TBA                |
| April 14-15 | NCAA Championships& | TBA                |

\* -- SEC meets

# -- Elevate Meet at the Birmingham-Jefferson Convention Complex

^ -- Perfect 10.0 Challenge - Oklahoma City, Okla.

S -- Veterans Memorial Arena - Jacksonville, Fla.

% -- Seattle, Wash.; Gainesville, Fla.; Fayetteville, Ark.; Champaign, Ill.; Lincoln, Neb.; Morgantown, W.V.

& -- Chaifetz Arena -- St. Louis, Mo.

### COACHING STAFF

|                               |                               |
|-------------------------------|-------------------------------|
| <b>Head Coach</b> .....       | Jeff Graba (Seventh Season)   |
| <b>Assistant Coach</b> .....  | Kurt Hettinger (Ninth Season) |
| <b>Assistant Coach</b> .....  | Mary McDaniel (Second Season) |
| <b>Director of Ops</b> .....  | Dawn Schueller (Sixth Season) |
| <b>Athletic Trainer</b> ..... | Janet Taylor (12th Season)    |

### SOCIAL: #WarEagle

|                          |                   |
|--------------------------|-------------------|
| » <b>Twitter</b> .....   | @AuburnGym        |
| » <b>Facebook</b> .....  | AuburnGym         |
| » <b>Instagram</b> ..... | @AuburnGymnastics |

### TV: SEC NETWORK

|                             |   |
|-----------------------------|---|
| » <b>Play-by-Play</b> ..... | Bart Conner   |
| » <b>Analyst</b> .....      | Kathy Johnson Clarke                                    |
| » <b>Reporter</b> .....     | Laura Rutledge  |
| » <b>Watch</b> .....        | <a href="http://es.pn/2lY4LxR">http://es.pn/2lY4LxR</a> |

### AUBURN ATHLETICS COMMUNICATIONS

|                      |                    |
|----------------------|--------------------|
| Kendra Willard ..... | kal0014@auburn.edu |
| Web .....            | AuburnTigers.com   |
| Office Phone .....   | (334) 844-9800     |

### Quick Facts

|                         |                            |
|-------------------------|----------------------------|
| Location .....          | Auburn, Ala.               |
| Nickname .....          | Tigers                     |
| Enrollment .....        | 25,469                     |
| Colors .....            | Burnt Orange and Navy Blue |
| Conference .....        | Southeastern               |
| President .....         | Dr. Jay Gogue              |
| Athletic Director ..... | Jay Jacobs                 |
| Facility .....          | Auburn Arena               |



## SEC CHAMPIONSHIP

Saturday, March 18 • 1 p.m. CT

Veterans Memorial Arena • Jacksonville, Fla.



|                   |  |
|-------------------|--|
| Site .....        | Jacksonville, Fla.                     |
| Venue .....       | Veterans Memorial Arena                |
| TV .....          | SEC Network                            |
| Last Season ..... | 4th, 196.975 (North Little Rock, Ark.) |

|                           |               |
|---------------------------|---------------|
| Rankings .....            | 21            |
| 2017 Record .....         | 1-10 / 0-7    |
| Head Coach .....          | Jeff Graba    |
| Record at AU (Year) ..... | 73-98-1 (7th) |

### PROBABLE LINEUP (CAREER STARTS IN EVENT)

#### VAULT

Katie Becker (10)  
 Emma Engler (14)  
 A' Miracal Phillips (14)  
 Taylor Krippner (25)  
 MJ Rott (51)  
 Gracie Day (11)  
 Alt: Kelsey Kopec

#### BARS

Katie Becker (4)  
 Kelsey Kopec (52)  
 Taylor Krippner (25)  
 Samantha Cerio (21)  
 Gracie Day (11)  
 Emma Engler (15)  
 Alt: Kendal Moss

#### BEAM

Kullen Hlawek (31)  
 Samantha Cerio (15)  
 Katie Becker (9)  
 Emma Engler (16)  
 Emma Slapppy (11)  
 Taylor Krippner (24)  
 Alt: Gracie Day

#### FLOOR

Katie Becker (9)  
 Gracie Day (7)  
 Lucia Scaglione (15)  
 Emma Slapppy (9)  
 Kullen Hlawek (35)  
 MJ Rott (45)  
 Alt: Samantha Cerio

### NO. 21 AUBURN KICKS OFF POSTSEASON AT SEC CHAMPIONSHIP

The No. 21 Auburn gymnastics team will compete in the afternoon session at the 2017 SEC Championship and will be the seventh seed in this year's meet. Auburn, along with No. 5 seed Kentucky, No. 6 seed Missouri, and No. 8 seed Arkansas will compete at 1 p.m. CT inside the Jacksonville Veterans Memorial Arena in Jacksonville, Fla.

"I think starting early for this team is a good thing," head coach Jeff Graba said. "It will get us out on the equipment early. Over half our lineup hasn't competed in the postseason. If we settle down and compete like we did last week, it will be a good night."

LSU secured the top seed in the conference meet and will be joined by No. 2 seed Florida, No. 3 seed Alabama, and No. 4 seed Georgia in the evening session that begins at 5 p.m. CT. The awards ceremony will follow.

### IN THE RANKINGS

Auburn stands at No. 21 in the weekly RoadToNationals.com rankings, having an RQS score of 196.135.

The Tigers are coming off a successful finish to the regular season as the team topped Pittsburgh, 196.300-194.200, in Auburn Arena Friday night. The team score was the highest for Auburn at home this year.

"This is an exciting time of the year for this team," Graba said. "This is going to be a great meet and our young group will need to perform well to stay in the postseason mix."

Auburn is in the Top 25 in all four events leading up to the conference meet. The youthful squad continues to excel on bars and comes in 15th with a 49.165 RQS. The Tigers are also 19th on beam at 49.075. Following a season-best performance on floor last week, AU upped its RQS to 49.160 in the event and rank 21st overall. The squad's 49.000 on vault is 22nd in the country.

A trio of Tigers are among the Top 50 nationally. Sophomore Taylor Krippner ranks tied for 35th on beam with a 9.880 RQS, while senior MJ Rott stands tied for 44th on vault (9.850). Sophomore Emma Engler has found success on bars this year and is tied for 50th with a 9.865.

#WarEagle



AuburnTigers.com

@AuburnGym | @AuburnTigers  
@CoachJeffGraba/AuburnGym  
/AuburnTigers

## TEAM SCHEDULE AND MEDIA AVAILABILITY » WEEK OF MARCH 6 - 12

| MONDAY<br>March 13                                     | TUESDAY<br>March 14  | WEDNESDAY<br>March 15                                     | THURSDAY<br>March 16  | FRIDAY<br>March 17  | SATURDAY<br>March 18                          | SUNDAY<br>March 19 |
|--|--|---|---|---|---|--------------------|
| <b>PRACTICE</b><br>1 p.m. - 4 p.m.<br>McWhorter Center | <b>PRACTICE</b><br>1 p.m. - 4 p.m.<br>McWhorter Center<br><br><b>MEDIA INTERVIEWS</b><br>4:30 p.m.<br>McWhorter Center | <b>PRACTICE</b><br>6 - 8 a.m. Workout<br>McWhorter Center | <b>PRACTICE</b><br>12:30 - 3:30 p.m.<br>McWhorter Center<br><br><b>TRAVEL TO JACKSONVILLE</b> | <b>PRACTICE</b><br>1 - 3 p.m. ET<br>Veterans Memorial Arena | <b>MEET</b><br>2 p.m. <b>SEC CHAMPIONSHIP</b> | <b>OFF</b>         |

## AUBURN ATHLETICS COMMUNICATIONS

## AUBURNTIGERS.COM

For updated game notes, statistics and all the latest information on Auburn gymnastics and meet weekend activities, go to [AuburnTigers.com](http://AuburnTigers.com).

## INTERVIEW POLICY

Coach Graba, assistant coaches and all athletes are available for phone and personal interviews by contacting Kendra Willard in the media relations office. Post-meet interviews will be conducted in the media room following a 10-minute cooling-off period.

## CREDENTIALS

Anyone wishing to cover an Auburn gymnastics meet should contact Kendra Willard in the communications office at least one day in advance in order to make the proper arrangements. Credentials are required for attendance.

## MATCH DAY SERVICES

Notes for both teams and lineup sheets will be provided prior to the meet. Stats will be distributed between each rotation and after the meet. Wireless internet is available in the Arena; ask Kendra Willard for the password.

## VIDEO SERVICES

FTP feeds of selected Auburn gymnastics highlights are available for the media. A number of studio and satellite services may be arranged for electronic media by calling Andrew Aaron in the Auburn video services office at 334.750.7133 or by emailing [aba0016@auburn.edu](mailto:aba0016@auburn.edu).

## PHOTO SERVICES

For photos of Auburn gymnastics or anything pertaining to Auburn Athletics, contact Wade Rackley at 334-750-6907 or via email at [wwr0004@auburn.edu](mailto:wwr0004@auburn.edu)

## COMMUNICATIONS STAFF

Kendra Willard      Gymnastics contact  
cell: 614-929-8029  
email: [kal0014@auburn.edu](mailto:kal0014@auburn.edu)

Kirk Sampson Associate AD  
cell: 334-750-1385  
email: [sampska@auburn.edu](mailto:sampska@auburn.edu)

Cassie Arner SEC Network/TV contact  
cell: 334-750-0502  
email: [carner@auburn.edu](mailto:carner@auburn.edu)

## GAMEDAY EXPERIENCE: AUBURN ARENA

» The Auburn gymnastics program has enjoyed five sellouts (7,424) in the last three seasons at Auburn Arena. The Tigers have reached new heights already in 2017 as season ticket holder numbers have risen yet again.



**2016 SEC CHAMPIONSHIPS**

The No. 6 Auburn gymnastics team scored a program record SEC Championship score of 196.975 to finish fourth at the 2016 SEC Gymnastics Championship in Verizon Arena in North Little Rock, Ark. The team finish is the second-consecutive fourth place finish for the Tigers.

The Tigers opened the championship's evening session on floor and finished with a 49.350 overall. Caitlin Atkinson led the way with a 9.9 for the Tigers, while Kullen Hlawek and Abby Milliet followed with a pair of 9.875s. Kait Kluz and MJ Rott added a 9.85 apiece.

Auburn headed to vault for the second rotation and came away with a 49.050. Atkinson and Lexus Demers each earned a 9.85 with Rott following with a 9.825. Kluz had a 9.775 and Kelsey Kopec opened the rotation with a 9.775.

The third rotation had the Tigers finish with a solid score of 49.325 on bars. Kluz and Kopec had a 9.9 and a 9.875, respectively. Samantha Cerio earned a 9.850. Milliet and Atkinson added a pair of 9.85s for Auburn.

The Tigers closed out the championship with a 49.225 on beam and were led by Atkinson, who finished tied for second overall in the event with a 9.925. Her finish gave her All-SEC honors.

Milliet and Demers tied for third overall in the event with a 9.9. Hlawek totaled a 9.825 and Krippner closed out scoring with a 9.7.

Atkinson finished the all-around in fifth overall with a 39.525.

**AUBURN IN THE CONFERENCE MEET**

The Tigers have experienced a wealth of success under head coach Jeff Graba at the SEC Championship. In his third season with the program in 2013, Graba led AU to a fifth-place finish with a then-program record score of 196.550.

Auburn qualified for the night session for the first time in program history in 2015, scoring a 196.925 to come in fourth. Last season, the squad set a new program record with a 196.975 to earn its second-straight fourth-place finish.

**AUBURN LINEUP**

Auburn will feature 18 routines from sophomores and freshmen Saturday, while the other six will come from the team's four seniors. In addition, 14 routines will come from student-athletes who have never competed in the postseason.

**GYMNAST TO WATCH: MJ ROTT**

» Senior MJ Rott put an exclamation point on Senior Night last Friday vs. Pittsburgh, capturing both the vault and floor titles. The Stillwater, Minnesota, product won vault with a 9.85, while taking floor with a career-tying score of 9.95.

Freshman Katie Becker will once again compete in all four rotations for the Tigers as the Boone, N.C., product is set to make her fourth start in the all-around for Auburn. Becker has competed in all events at Alabama (Feb. 17), at Missouri (March 3) and vs. Pittsburgh (March 10). She finished with a season-best 38.950 in Tuscaloosa, while taking the all-around title vs. the Panthers with a 38.925.

Auburn kicks things off on beam and the team's youth shines through as three spots are held by sophomores (Samantha Cerio, Emma Engler, Taylor Krippner). Becker and redshirt freshman Emma Slappey are also set to compete. Senior Kullen Hlawek will lead things off for the Tigers.

Floor follows and brings the most experience for Auburn as seniors Lucia Scaglione and MJ Rott joins Hlawek in the lineup. A trio of freshmen in Becker, Slappey, and Gracie Day will also compete for points for Auburn.

Auburn continues the meet on vault in the third rotation and Rott will guide the youthful lineup as she is set to compete in her 52nd career meet in this event. Sophomores Engler, A'Miracal Phillips, and Krippner join Rott, while Becker and Day are also set to go in the rotation.

The team concludes the day with bars as the squad has enjoyed success in the event this season. Making her 53rd start in the event will be redshirt senior Kelsey Kopec. Becker will kick things off in the leadoff spot for the Tigers with Kopec following. Krippner, sCerio, and Day will go in spots 3-5, while Engler is set to anchor for the third-straight meet.

**LAST TIME OUT - SUCCESSFUL SENIOR NIGHT**

Auburn capped the regular season at home last Friday night, defeating Pittsburgh in Auburn Arena, 196.300-194.200.

The Tigers honored their four seniors – Kullen Hlawek, Kelsey Kopec, MJ Rott, Lucia Scaglione - prior to the evening's events.

The home team also swept the event titles on the night with Rott taking the vault and floor titles. Gracie Day picked up her first bars victory, while Emma Slappey and Samantha Cerio shared the beam win. Katie Becker went on to take the all-around title with a 38.925.

Auburn excelled in the final rotation, setting a season-best score on floor with a 49.325. Highlighting the event was Rott and Hlawek as the seniors capped the rotation for the Tigers. Rott tied a career best with a 9.95 in the anchor spot to take away

**SEC STANDINGS & SCHEDULE**

|          | <i>(as of March 14)</i> |   |       |           |     |      |         |
|----------|-------------------------|---|-------|-----------|-----|------|---------|
|          | SEC Meets               |   |       | All Meets |     |      | RQS     |
|          | W                       | L | Pct.  | W         | L-T | Pct. |         |
| LSU      | 7                       | 0 | 1.000 | 13        | 1   | .929 | 197.785 |
| Florida  | 5                       | 2 | .714  | 8         | 3   | .778 | 197.495 |
| Alabama  | 4                       | 3 | .571  | 7         | 4   | .600 | 197.285 |
| Georgia  | 4                       | 3 | .571  | 7         | 6   | .500 | 197.005 |
| Kentucky | 3                       | 4 | .429  | 10        | 4-1 | .750 | 196.750 |
| Missouri | 3                       | 4 | .429  | 10        | 6   | .563 | 196.540 |
| AUBURN   | 0                       | 7 | .000  | 1         | 10  | .000 | 196.135 |
| Arkansas | 2                       | 5 | .286  | 4         | 7   | .222 | 195.775 |

**LAST WEEK'S RESULTS**

**Friday, March 10**

#3 Florida def. #22 West Virginia, 197.600-196.100  
 Arkansas def. San Jose State & Centenary, 196.150-193.875-188.250  
 #20 Auburn def. Pittsburgh, 196.300-194.200  
 #15 Missouri def. #12 Kentucky, 197.150-196.925  
 #6 Alabama def. Iowa State, 197.100-196.600  
 #2 LSU def. #26 New Hampshire, 197.875-195.300

**Saturday, March 11**

#7 Georgia def. #5 Utah, 197.250-196.650

**AUBURN IN THE RANKINGS**

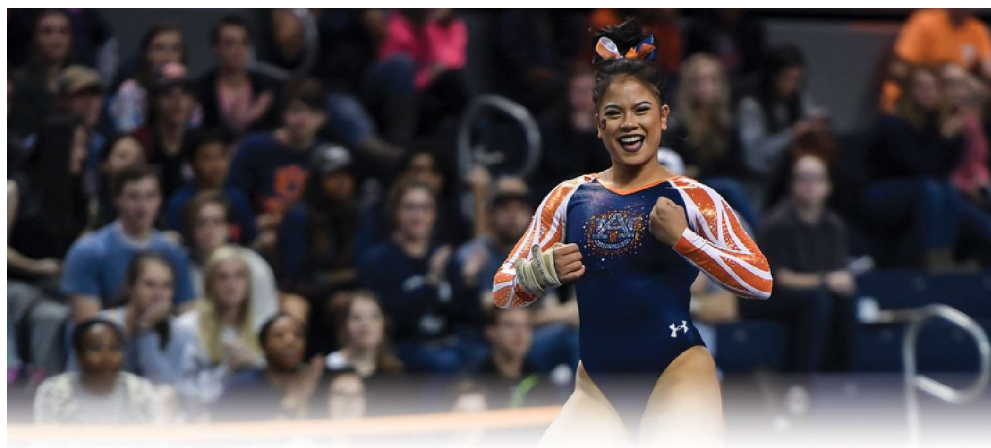
**TEAM (as of March 13)**

| EVENT      | RQS     | NAT'L | REG. |
|------------|---------|-------|------|
| Vault      | 49.000  | 22nd  | 5th  |
| Bars       | 49.165  | 15th  | 5th  |
| Beam       | 49.075  | 19th  | 4th  |
| Floor      | 49.160  | 21st  | 5th  |
| Team Total | 196.135 | 21st  | 4th  |

**INDIVIDUAL RANKS (Top 50 National :: Top 25 Region)**

*(as of March 13)*

| GYMNAST         | EVENT | AVG   | NAT'L  | REG.   |
|-----------------|-------|-------|--------|--------|
| Samantha Cerio  | Bars  | 9.850 | -      | t-20th |
| Gracie Day      | Vault | 9.835 | -      | t-18th |
|                 | Bars  | 9.855 | -      | t-17th |
| Emma Engler     | Bars  | 9.865 | t-50th | t-11th |
| Kullen Hlawek   | Floor | 9.860 | -      | t-20th |
| Taylor Krippner | Beam  | 9.880 | t-35th | t-11th |
| MJ Rott         | Vault | 9.850 | t-44th | t-12th |
|                 | Floor | 9.860 | -      | t-20th |
| Lucia Scaglione | Floor | 9.850 | -      | t-23rd |



## NATIONAL RANKINGS

(March 13)

| Rk   | Team                | RQS     | High    |
|------|---------------------|---------|---------|
| 1    | <b>Oklahoma</b>     | 198.000 | 198.350 |
| 2    | <b>LSU</b>          | 197.785 | 198.150 |
| 3    | UCLA                | 197.500 | 198.125 |
| 4    | <b>Florida</b>      | 197.495 | 197.975 |
| 5    | Utah                | 197.355 | 197.875 |
| 6    | <b>Alabama</b>      | 197.285 | 197.825 |
| 7    | Denver              | 197.040 | 197.150 |
| 8    | <b>Georgia</b>      | 197.005 | 197.325 |
| 9    | Michigan            | 196.880 | 197.825 |
| 10   | <b>Oregon State</b> | 196.875 | 197.475 |
| 11   | Boise State         | 196.835 | 197.675 |
| 12   | <b>Kentucky</b>     | 196.750 | 197.475 |
| 13   | Nebraska            | 196.640 | 197.175 |
| 14   | <b>Missouri</b>     | 196.540 | 197.200 |
| 15   | Washington          | 196.480 | 197.175 |
| t-16 | Iowa                | 196.400 | 196.725 |
| t-16 | California          | 196.400 | 197.075 |
| 18   | George Washington   | 196.305 | 196.725 |
| 19   | Southern Utah       | 196.300 | 197.025 |
| 20   | Illinois            | 196.245 | 196.625 |
| 21   | <b>AUBURN</b>       | 196.135 | 196.450 |
| 22   | West Virginia       | 195.920 | 196.300 |
| 23   | Utah State          | 195.830 | 196.300 |
| 24   | Ohio State          | 195.815 | 196.450 |
| 25   | Eastern Michigan    | 195.805 | 196.225 |

**BOLD** - 2017 regular season opponents

## Inside the Matchup

## Auburn at SEC Championship

## LAST 15 YEARS

|      |                         |       |         |
|------|-------------------------|-------|---------|
| 2002 | Birmingham, Ala.        | t-5th | 194.325 |
| 2003 | Birmingham, Ala.        | 5th   | 195.025 |
| 2004 | Duluth, Ga.             | 5th   | 195.925 |
| 2005 | Duluth, Ga.             | 6th   | 195.125 |
| 2006 | Birmingham, Ala.        | 5th   | 194.975 |
| 2007 | North Little Rock, Ark. | 6th   | 194.475 |
| 2008 | Duluth, Ga.             | 5th   | 196.100 |
| 2009 | Nashville, Tenn.        | 5th   | 196.350 |
| 2010 | Jacksonville, Fla.      | 5th   | 195.575 |
| 2011 | Birmingham, Ala.        | 6th   | 195.325 |
| 2012 | Duluth, Ga.             | 7th   | 194.100 |
| 2013 | North Little Rock, Ark. | 5th   | 196.550 |
| 2014 | Birmingham, Ala.        | 5th   | 195.550 |
| 2015 | Duluth, Ga.             | 4th   | 196.925 |
| 2016 | North Little Rock, Ark. | 4th   | 196.975 |

the title, while Hlawek tied a season best at 9.9. Scaglione added a 9.85 and Day tied her career best with a 9.85 as well. Becker and Slappey each finished with a pair of 9.775s for AU.

The Tigers kicked off the evening on vault and came away with a 48.875 as a team. Rott, of Stillwater, Minn., won the apparatus with a 9.85. A'Miracal Phillips and Taylor Krippner followed with a pair of 9.8s, tying a season-best for Phillips. Becker and Emma Engler also chipped in on the team score with a 9.775 and 9.675, respectively.

The second rotation had Auburn finish with the team's second-best score of the season at 49.225. Day went fifth for the squad and set a career high with a 9.9. Kopec also had a solid score for the Tigers, finishing with a 9.85 on her final performance in Auburn Arena. Krippner, Cerio, and Engler put together solid routines to earn a 9.825 each.

Auburn went to beam in rotation three and was led by Cerio's and Slappey's 9.825s. Hlawek had a 9.775 in the leadoff slot, while Engler and Becker followed at 9.75 and 9.7, respectively.

**SUCCESSFUL SWINGING ON BARS**

Auburn has had success on the uneven bars this year, ranking in the Top 15 in the event nationally with a 49.165.

Auburn's season-best score came vs. the Razorbacks in February as the team finished with a 49.375. The Tigers capped the regular season last Friday with another solid score, earning a 49.225 as a group.

Sophomore Emma Engler has been very steady in the event for Auburn and is ranked tied for 50th nationally at 9.865. That RQS is also tied for 11th in the central region. Freshman Gracie Day is coming off a career-best 9.9 vs. the Panthers and stands tied for 17th regionally at 9.855. Sophomore Samantha Cerio has also been very steady in the event for AU and it tied for 20th in the central region at 9.85.

**CONTINUED GROWTH ON FLOOR**

Auburn has seen its floor scores continue to rise behind the solid contributions of three of its seniors - Lucia Scaglione, Kullen Hlawek, and MJ Rott.

The team has set new season-highs on floor in the last two meets, scoring a 49.250 at Missouri (March 3) before capping the season with a 49.325 vs. Pitt (March 10).

**GYMNAST TO WATCH: GRACIE DAY**

» Freshman Gracie Day capped the regular season on a high note vs. Pittsburgh, excelling on bars for the Tigers. The San Antonio, Texas, product set a career high in the second rotation, scoring a 9.9 to win the event title.



Scaglione has scored a career best 9.875 on floor on two occasions and ranked tied for 23rd regionally with a 9.85. Hlawek's scores have continued to rise as she earned back-to-back 9.9s to conclude the regular season. Rott captured the event title vs. the Panthers, tying a career best with a 9.95. Hlawek and Rott each have an RQS of 9.86 to rank tied for 20th regionally.

**STRENGTH OF SCHEDULE**

In a poll on RoadtoNationals.com, Auburn's 2017 schedule ranks the second toughest schedule in the nation.

Ten of Auburn's 11 regular season meets are against teams ranked in top 25. Those include match ups with five teams who competed in last year's Super Six - Oklahoma (Feb. 10), LSU (Feb. 24), Alabama (Jan. 29, Feb. 17), Florida (Jan. 27), Georgia (Jan. 13).

**SEASON TICKET RECORDS**

In addition to setting a new program preseason ranking record, this year's team reached another height before the season began. With the competition year about to begin, Auburn has over 1,550 season ticket holders, marking the most sold for the program.

In the last three years, the Tigers have sold out Auburn Arena five times (7,424) - Georgia (2015), Florida (2016), Alabama (2016), Georgia (2017), LSU (2017).

**SMARTY PANTS**

A trio of Tigers in Kelsey Kopec, Kullen Hlawek, and Samantha Cerio are engrossed in their studies as all three are engineering majors. Kopec, who graduated last spring with a degree in mechanical engineering, is currently working on her MBA at Auburn.

In addition, senior Lucia Scaglione is a Biomedical Science major.

**UP NEXT**

The postseason continues as the Tigers await their NCAA Regional fate. The 2017 Selection Show is set for Monday, March 20, and will be streamed at 3 p.m. CT on NCAA.com.

## 2017 AUBURN GYMNASTICS ROSTER

| NAME                | EVENT | HT  | CL     | HOMETOWN/CLUB                             |
|---------------------|-------|-----|--------|---|
| Katie Becker        | AA    | 5-4 | Fr.    | Boone, N.C./Everest Gymnastics            |
| Telah Black         | AA    | 5-3 | So.    | Helena, Ala./Jamjev Gymnastics            |
| Samantha Cerio      | AA    | 5-0 | So.    | Huntersville, N.C./KPAC                   |
| Gracie Day          | AA    | 5-4 | Fr.    | San Antonio, Texas/Aerial Athletics       |
| Emma Engler         | AA    | 5-3 | So.    | Raleigh, N.C./Sonshine Gymnastics         |
| Kennedy Finister    | AA    | 5-1 | Jr.    | Magnolia, Texas/Champion Gymnastics       |
| Sarah Garcia        | AA    | 5-3 | Jr.    | Temecula, Calif./SCEGA                    |
| Kullen Hlawek       | AA    | 5-1 | Sr.    | Fulshear, Texas/Champion Gymnastics       |
| Kelsey Kopec        | AA    | 5-7 | RS Sr. | Alpharetta, Ga./Ultimate Gymnastics       |
| Taylor Krippner     | AA    | 5-1 | So.    | Cypress, Texas/World Champions            |
| Abby Milliet        | AA    | 5-1 | Jr.    | Denton, Texas/Denton Gymnastics Academy   |
| Kendal Moss         | AA    | 5-4 | Fr.    | Cornelius, N.C./Everest Gymnastics        |
| A' Miracal Phillips | AA    | 5-6 | So.    | Enterprise, Ala./Alabama Elite            |
| MJ Rott             | AA    | 5-0 | Sr.    | Stillwater, Minn./Rising Stars Gymnastics |
| Lucia Scaglione     | FX/VT | 5-0 | Sr.    | Tampa, Fla./Lafleurs Tampa                |
| Emma Slappey        | AA    | 5-2 | RS Fr. | Jacksonville, Fla./Starlight Gymnastics   |
| Cara Stricklin      | AA    | 5-5 | Jr.    | Mandeville, La./Cypress Pointe Gymnastics |

|                                |                                       |
|--------------------------------|---------------------------------------|
| <b>Head Coach:</b>             | Jeff Graba (Seventh year at Auburn)   |
| <b>Assistant Coach:</b>        | Kurt Hettinger (Ninth year at Auburn) |
| <b>Assistant Coach:</b>        | Mary McDaniel (Second year at Auburn) |
| <b>Director of Operations:</b> | Dawn Schueller (Sixth year at Auburn) |
| <b>Volunteer Assistant:</b>    | Rachel Inniss (First year at Auburn)  |
| <b>Athletic Trainer:</b>       | Janet Taylor (12th year at Auburn)    |
| <b>Graduate Assistant:</b>     | Corrie Lathrop (First year at Auburn) |
| <b>Student Managers:</b>       | Alexa Moates, Blake Jones             |

## PRONUNCIATION GUIDE

|                     |                              |
|---------------------|------------------------------|
| TELAH Black         | TAY-lah                      |
| Samantha CERIO      | SAIR-ee-oh                   |
| KULLEN HLAWEK       | KULL-in LAUW-ick             |
| Kelsey KOPEC        | CO-peck                      |
| Abby MILLIET        | mill-AYE                     |
| A' MIRACAL Phillips | uh-MIRacle                   |
| MJ ROTT             | WROTE                        |
| LUCIA SCAGLIONE     | lou-CHEE-uh scag-lee-OH-knee |
| Jeff GRABA          | GRAY-buh                     |



## Head Coach Jeff Graba

at Auburn & Overall: 73-98-1 (7th)



**Hometown:**  
Forest Lake, Minn.  
**Education:**  
Minnesota, 1992

## COACHING EXPERIENCE

Flips Gym Head Coach (1988-1995)  
 • White Bear Lake, Minn.  
 Hamline University Assistant Coach (1992-1998)  
 • St. Paul, Minn.  
 Midwest Gym Head Coach (1995-2003)  
 • Little Canada, Minn.  
 Utah State Assistant Coach (2004-2005)  
 • Logan, Utah  
 Utah Assistant Coach (2006-2010)  
 • Salt Lake City, Utah  
 Auburn Head Coach (2010-)  
 • Auburn, Ala.

Three-time SEC Coach of the Year Jeff Graba enters his seventh season at the helm of the Auburn gymnastics program in 2017 and has guided the Tigers record heights during his time on The Plains.

For his efforts over the past six seasons, the Minnesota native was named SEC Coach of the Year in 2014 and 2015 and SEC co-Coach of the Year in 2012.

Most recently, Graba and the 2016 team added to the list of firsts for the program under his guidance. The Tigers snapped the 117-meet losing skid to Alabama in February of that season, defeating the Crimson Tide at home (197.275-197.250). Auburn also defeated Georgia in Athens for the first time in program history, setting a new program-high road score on the way (197.325).

In addition, the Tigers earned the program's first No. 1 NCAA regional seed and captured the NCAA Ann Arbor Regional title with a 196.525.

Auburn enjoyed a breakout season in 2015 as Graba led the Tigers to the NCAA Championship Super Six for the first time in 22 years. That season, Auburn broke or tied 52 program records that season.

Auburn's sixth place finish at the Super Six was the Tigers' second best in history and highest since 1993 with a NCAA nationals record score of 197.075. The Tigers also had a program record Super Six score of 195.625.

Auburn reached the 2015 NCAA Championship for the first time since 2003 and for only the fourth time overall as the Tigers tied a school-best with a runner-up finish at the NCAA Regional with a regional record score of 196.900.

Graba was named Auburn head coach on August 16, 2010. He came to The Plains after spending five years as an assistant coach at Utah. While with the Utes, he was named the 2009 West Region Assistant Coach of the Year while coaching bars, collaborating on floor routines and serving as the recruiting coordinator.

## 2017 MEET-BY-MEET RESULTS

| DATE    | MEET                  | RESULT | VAULT  | BARS   | BEAM   | FLOOR  | TEAM    | OPP. 1  | OPP. 2 | OPP. 3 |
|---------|-----------------------|--------|--------|--------|--------|--------|---------|---------|--------|--------|
| 1/6     | #12 OREGON STATE      | L      | 48.900 | 48.900 | 48.800 | 48.675 | 195.275 | 195.575 | ---    | ---    |
| 1/13    | GEORGIA               | L      | 48.900 | 49.125 | 48.825 | 49.225 | 196.075 | 196.800 | ---    | ---    |
| 1/20    | at Kentucky           | L      | 48.800 | 49.125 | 48.950 | 48.925 | 195.800 | 197.100 | ---    | ---    |
| 1/27    | at Florida            | L      | 49.025 | 49.050 | 49.150 | 49.175 | 196.400 | 197.700 | ---    | ---    |
| 1/29    | vs. Alabama           | L      | 48.900 | 49.150 | 47.600 | 49.025 | 194.675 | 195.850 | ---    | ---    |
| 2/3     | ARKANSAS              | L      | 49.050 | 49.375 | 49.075 | 48.575 | 196.075 | 196.375 | ---    | ---    |
| 2/10    | vs. Oklahoma          | L      | 49.150 | 48.425 | 49.050 | 49.100 | 195.725 | 198.075 | ---    | ---    |
| 2/17    | at Alabama            | L      | 49.025 | 49.200 | 49.175 | 49.050 | 196.450 | 197.350 | ---    | ---    |
| 2/24    | LSU                   | L      | 48.800 | 49.125 | 49.150 | 49.025 | 196.100 | 197.675 | ---    | ---    |
| 3/3     | at Missouri           | L      | 49.000 | 48.350 | 48.750 | 49.250 | 195.350 | 197.200 | ---    | ---    |
| 3/10    | PITTSBURGH            | W      | 48.875 | 49.225 | 48.875 | 49.325 | 196.300 | 194.200 | ---    | ---    |
| 3/18    | at SEC Championship   | ---    | ---    | ---    | ---    | ---    | ---     | ---     | ---    | ---    |
| 4/1     | at NCAA Regional      | ---    | ---    | ---    | ---    | ---    | ---     | ---     | ---    | ---    |
| 4/17-18 | at NCAA Championships | ---    | ---    | ---    | ---    | ---    | ---     | ---     | ---    | ---    |

## AUBURN

1-10

SEC WEEKLY TEAM RANKINGS  
(as of March 14)

| Team Total Rank | Team          | RQS     | High    |
|-----------------|---------------|---------|---------|
| 1.              | LSU           | 197.785 | 198.150 |
| 2.              | Florida       | 197.495 | 197.975 |
| 3.              | Alabama       | 197.285 | 197.825 |
| 4.              | Georgia       | 197.005 | 197.325 |
| 5.              | Kentucky      | 196.750 | 197.475 |
| 6.              | Missouri      | 196.540 | 197.200 |
| 7.              | <b>AUBURN</b> | 196.135 | 196.450 |
| 8.              | Arkansas      | 195.775 | 196.375 |

| Vault Rank | Team          | AVG    | High   |
|------------|---------------|--------|--------|
| 1.         | LSU           | 49.500 | 49.625 |
| 2.         | Florida       | 49.440 | 49.550 |
| 3.         | Alabama       | 49.300 | 49.500 |
| 4.         | Kentucky      | 49.245 | 49.425 |
| 5.         | Georgia       | 49.220 | 49.375 |
| 6.         | Missouri      | 49.205 | 49.425 |
| 7.         | <b>AUBURN</b> | 49.000 | 49.150 |
| 8.         | Arkansas      | 48.915 | 49.000 |

| Bars Rank | Team          | AVG    | High   |
|-----------|---------------|--------|--------|
| 1.        | LSU           | 49.395 | 49.500 |
| 2.        | Florida       | 49.380 | 49.575 |
| 3.        | Alabama       | 49.320 | 49.400 |
| 4.        | Georgia       | 49.200 | 49.425 |
| 5.        | Kentucky      | 49.180 | 49.325 |
| 6.        | <b>AUBURN</b> | 49.165 | 49.375 |
| 7.        | Missouri      | 49.145 | 49.350 |
| 8.        | Arkansas      | 48.960 | 49.200 |

| Beam Rank | Team          | AVG    | High   |
|-----------|---------------|--------|--------|
| 1.        | LSU           | 49.495 | 49.575 |
| 2.        | Alabama       | 49.400 | 49.600 |
| 3.        | Florida       | 49.370 | 49.525 |
| 4.        | Kentucky      | 49.245 | 49.425 |
| 5.        | Georgia       | 49.220 | 49.425 |
| 6.        | Missouri      | 49.150 | 49.500 |
| 7.        | <b>AUBURN</b> | 49.075 | 49.175 |
| 8.        | Arkansas      | 49.055 | 49.150 |

| Floor Exercise Rank | Team          | AVG    | High   |
|---------------------|---------------|--------|--------|
| 1.                  | LSU           | 49.540 | 49.625 |
| 2.                  | Alabama       | 49.505 | 49.650 |
| 3.                  | Florida       | 49.395 | 49.675 |
| 4.                  | Georgia       | 49.375 | 49.600 |
| 5.                  | Kentucky      | 49.265 | 49.525 |
| 6.                  | Missouri      | 49.210 | 49.400 |
| 7.                  | <b>AUBURN</b> | 49.160 | 49.325 |
| 8.                  | Arkansas      | 48.990 | 49.325 |

SEC WEEKLY INDIVIDUAL RANKINGS  
(as of March 14)

| All-Around Rank | Name, School       | A-A AVG | High   |
|-----------------|--------------------|---------|--------|
| 1.              | Kiana Winston, UA  | 39.550  | 39.700 |
| 2.              | Alicia Boren, UF   | 39.530  | 39.725 |
| 3.              | Amelia Hundley, UF | 39.485  | 39.625 |
| 4.              | Myia Hambrick, LSU | 39.465  | 39.625 |
| 5.              | Mollie Korh, UK    | 39.450  | 39.625 |

| Vault Rank | Name, School       | Vault AVG | High   |
|------------|--------------------|-----------|--------|
| 1.         | Ashleigh Gnat, LSU | 9.955     | 10.000 |
| t-2.       | Rachel Slocum, UF  | 9.940     | 9.975  |
| t-2.       | Alex McMurtry, UF  | 9.940     | 10.000 |
| 4.         | Alicia Boren, UF   | 9.925     | 9.950  |
| 5.         | Britney Ward, MO   | 9.915     | 9.950  |

| Bars Rank | Name, School         | Bars AVG | High   |
|-----------|----------------------|----------|--------|
| 1.        | Alex McMurtry, UF    | 9.930    | 10.000 |
| 2.        | Amelia Hundley, UF   | 9.920    | 9.975  |
| 3.        | Lexie Priessman, LSU | 9.915    | 9.950  |
| t-4.      | Mollie Korh, UK      | 9.895    | 9.925  |
| t-4.      | Kennedi Edney, LSU   | 9.895    | 9.950  |

| Beam Rank | Name, School        | Beam AVG | High  |
|-----------|---------------------|----------|-------|
| t-1.      | Sarah Finnegan, LSU | 9.945    | 9.950 |
| t-1.      | Nickie Guerrero, UA | 9.945    | 9.975 |
| t-3.      | Britney Ward, MO    | 9.925    | 9.975 |
| t-3.      | Kiana Winston, UA   | 9.925    | 9.975 |
| 5.        | Alex McMurtry, UF   | 9.920    | 9.950 |

| Floor Rank | Name, School       | Floor AVG | High   |
|------------|--------------------|-----------|--------|
| 1.         | Ashleigh Gnat, LSU | 9.950     | 9.975  |
| t-2.       | Alicia Boren, UF   | 9.945     | 9.950  |
| t-2.       | Kiana Winston, UA  | 9.945     | 10.000 |
| t-4.       | Myia Hambrick, LSU | 9.930     | 9.950  |
| t-4.       | Aja Sims, UA       | 9.930     | 9.975  |
| t-4.       | GiGi Marino, UG    | 9.930     | 9.950  |

**AUBURN SCORING RECORDS****TOP TEAM SCORES - OVERALL**

|    | SCORE   | OPPONENT     | DATE    |
|----|---------|--------------|---------|
| 1. | 197.750 | vs. Georgia  | 2/27/15 |
| 2. | 197.325 | at Georgia   | 3/4/16  |
| 3. | 197.300 | vs. LSU      | 2/13/15 |
| 4. | 197.275 | vs. Alabama  | 2/12/16 |
| 5. | 197.200 | vs. Missouri | 2/26/16 |

**TOP TEAM SCORES - HOME ONLY**

|    | SCORE   | OPPONENT          | DATE    |
|----|---------|-------------------|---------|
| 1. | 197.750 | vs. Georgia       | 2/27/15 |
| 2. | 197.300 | vs. LSU           | 2/13/15 |
| 3. | 197.275 | vs. Alabama       | 2/12/16 |
| 4. | 197.200 | vs. Missouri      | 2/26/16 |
| 5. | 197.175 | vs. LSU           | 2/22/13 |
|    | 197.175 | vs. Arizona State | 3/11/16 |

**TOP TEAM SCORES - AWAY ONLY**

|    | SCORE   | OPPONENT    | DATE    |
|----|---------|-------------|---------|
| 1. | 197.325 | at Georgia  | 3/4/16  |
| 2. | 197.125 | at LSU      | 2/19/16 |
| 3. | 196.875 | at Missouri | 2/20/15 |
| 4. | 196.850 | at LSU      | 1/25/14 |
| 5. | 196.825 | at Alabama  | 2/6/15  |
|    | 196.825 | at TWU      | 2/5/16  |

**TOP TEAM SCORES - VAULT**

|    | SCORE  | OPPONENT                  | DATE    |
|----|--------|---------------------------|---------|
| 1. | 49.500 | vs. LSU                   | 2/13/15 |
|    | 49.500 | at Denver                 | 3/2/08  |
| 3. | 49.425 | vs. North Carolina        | 3/13/15 |
|    | 49.425 | at LSU                    | 1/25/14 |
| 5. | 49.400 | vs. Florida               | 1/17/14 |
|    | 49.400 | vs. Illinois-Chicago      | 3/11/07 |
|    | 49.400 | at NCAA Regional (Auburn) | 4/4/15  |

**TOP TEAM SCORES - BARS**

|    | SCORE  | OPPONENT      | DATE    |
|----|--------|---------------|---------|
| 1. | 49.525 | vs. Arkansas  | 1/23/15 |
| 2. | 49.500 | vs. Centenary | 3/5/00  |
| 3. | 49.475 | vs. Florida   | 2/17/12 |
| 4. | 49.450 | vs. Georgia   | 2/27/15 |
|    | 49.450 | vs. Maryland  | 3/20/10 |

**TOP TEAM SCORES - BEAM**

|    | SCORE  | OPPONENT            | DATE    |
|----|--------|---------------------|---------|
| 1. | 49.600 | at Centenary        | 2/29/04 |
| 2. | 49.425 | at Denver           | 3/2/08  |
|    | 49.425 | at Alabama          | 2/15/13 |
| 4. | 49.400 | at LSU              | 2/8/08  |
|    | 49.400 | at Arkansas         | 2/2/08  |
|    | 49.400 | at Alabama          | 2/6/15  |
|    | 49.400 | at SEC Championship | 3/21/15 |

**TOP TEAM SCORES - FLOOR**

|    | SCORE  | OPPONENT          | DATE    |
|----|--------|-------------------|---------|
| 1. | 49.600 | vs. Florida       | 2/13/04 |
|    | 49.600 | vs. Arizona State | 3/11/16 |
| 3. | 49.550 | vs. Georgia       | 2/27/15 |
| 4. | 49.525 | vs. Maryland      | 3/1/13  |
| 5. | 49.500 | vs. Missouri      | 2/26/16 |

**PROGRAM BESTS****TEAM**

| EVENT | SCORE   | DATE              |
|-------|---------|-------------------|
| TOTAL | 197.750 | February 27, 2015 |
| VAULT | 49.500  | February 13, 2015 |
|       | 49.500  | March 2, 2008     |
| BARS  | 49.525  | January 23, 2015  |
| BEAM  | 49.600  | February 29, 2004 |
| FLOOR | 49.600  | February 13, 2004 |
|       | 49.600  | March 11, 2016    |

**INDIVIDUAL**

| EVENT      | SCORE  | GYMNAST, YEAR           |
|------------|--------|-------------------------|
| ALL AROUND | 39.750 | Caitlin Atkinson, 2015  |
| VAULT      | 9.975  | MJ Rott, 2015           |
|            | 9.975  | MJ Rott, 2014           |
|            | 9.975  | Julie Dwyer, 2008       |
| BARS       | 10.0   | Sarah Wentworth, 2000   |
| BEAM       | 10.0   | Rachael Tarantino, 2004 |
|            | 10.0   | Sally Cantrell, 2002    |
| FLOOR      | 10.0   | Becky Erwin, 1993       |

**2017 INDIVIDUAL TOP SCORES****VAULT**

|      |       |                 |                        |
|------|-------|-----------------|------------------------|
| 1.   | 9.900 | MJ Rott         | ARKANSAS (Feb. 3)      |
| 2.   | 9.875 | MJ Rott         | at Alabama (Feb. 17)   |
| t-3. | 9.850 | Gracie Day      | OREGON STATE (Jan. 6)  |
| t-3. | 9.850 | Gracie Day      | GEORGIA (Jan. 13)      |
| t-3. | 9.850 | MJ Rott         | at Florida (Jan. 27)   |
| t-3. | 9.850 | Gracie Day      | vs. Oklahoma (Feb. 10) |
| t-3. | 9.850 | Taylor Krippner | vs. Oklahoma (Feb. 10) |
| t-3. | 9.850 | MJ Rott         | vs. Oklahoma (Feb. 10) |
| t-3. | 9.850 | MJ Rott         | PITTSBURGH (March 10)  |

**BARS**

|      |       |                 |                       |
|------|-------|-----------------|-----------------------|
| t-1. | 9.900 | Samantha Cerio  | ARKANSAS (Feb. 3)     |
| t-1. | 9.900 | Emma Engler     | at Alabama (Feb. 17)  |
| t-1. | 9.900 | Emma Engler     | LSU (Feb. 24)         |
| t-1. | 9.900 | Gracie Day      | PITTSBURGH (March 10) |
| t-5. | 9.875 | Gracie Day      | at Florida (Jan. 27)  |
| t-5. | 9.875 | Kelsey Kopec    | vs. Alabama (Jan. 29) |
| t-5. | 9.875 | Kelsey Kopec    | ARKANSAS (Feb. 3)     |
| t-5. | 9.875 | Taylor Krippner | ARKANSAS (Feb. 3)     |
| t-5. | 9.875 | Emma Engler     | ARKANSAS (Feb. 3)     |
| t-5. | 9.875 | Samantha Cerio  | at Alabama (Feb. 17)  |
| t-5. | 9.875 | Samantha Cerio  | LSU (Feb. 24)         |

**BEAM**

|      |       |                 |                        |
|------|-------|-----------------|------------------------|
| 1.   | 9.925 | Taylor Krippner | LSU (Feb. 24)          |
| t-2. | 9.900 | Emma Engler     | at Florida (Jan. 27)   |
| t-2. | 9.900 | Taylor Krippner | ARKANSAS (Feb. 3)      |
| t-2. | 9.900 | Taylor Krippner | vs. Oklahoma (Feb. 10) |
| t-2. | 9.900 | Taylor Krippner | at Alabama (Feb. 17)   |

**FLOOR**

|      |       |                |                       |
|------|-------|----------------|-----------------------|
| t-1. | 9.950 | MJ Rott        | GEORGIA (Jan. 13)     |
| t-1. | 9.950 | MJ Rott        | PITTSBURGH (March 10) |
| t-3. | 9.900 | Emma Slappey   | at Florida (Jan. 27)  |
| t-3. | 9.900 | Samantha Cerio | ARKANSAS (Feb. 3)     |
| t-3. | 9.900 | Kullen Hlawek  | at Missouri (March 3) |
| t-3. | 9.900 | Kullen Hlawek  | PITTSBURGH (March 10) |

**2017 SEASON BESTS****TEAM**

| EVENT | SCORE   | DATE                   |
|-------|---------|------------------------|
| TOTAL | 196.450 | at Alabama (Feb. 17)   |
| VAULT | 49.150  | vs. Oklahoma (Feb. 10) |
| BARS  | 49.375  | Arkansas (Feb. 3)      |
| BEAM  | 49.175  | at Alabama (Feb. 17)   |
| FLOOR | 49.325  | Pittsburgh (March 10)  |

**INDIVIDUAL**

| EVENT | SCORE  | GYMNAST (DATE)                 |
|-------|--------|--------------------------------|
| TOTAL | 38.700 | Abby Milliet (Jan. 6)          |
| VAULT | 9.900  | MJ Rott (Feb. 3)               |
| BARS  | 9.900  | Samantha Cerio (Feb. 3)        |
|       | 9.900  | Emma Engler (Feb. 17, Feb. 24) |
|       | 9.900  | Gracie Day (March 10)          |
| BEAM  | 9.925  | Taylor Krippner (Feb. 24)      |
| FLOOR | 9.950  | MJ Rott (Jan. 13)              |
|       | 9.950  | MJ Rott (March 10)             |

**2017 TEAM TOP SCORES****TEAM TOTAL**

|      |         |            |          |
|------|---------|------------|----------|
| 1.   | 196.450 | at Alabama | Feb. 17  |
| 2.   | 196.400 | at Florida | Jan. 27  |
| 3.   | 196.300 | PITTSBURGH | March 10 |
| 4.   | 196.100 | LSU        | Feb. 24  |
| t-5. | 196.075 | GEORGIA    | Jan. 13  |
| t-5. | 196.075 | ARKANSAS   | Feb. 3   |

**VAULT**

|      |        |              |         |
|------|--------|--------------|---------|
| 1.   | 49.150 | vs. Oklahoma | Feb. 10 |
| 2.   | 49.050 | ARKANSAS     | Feb. 3  |
| t-3. | 49.025 | at Florida   | Jan. 27 |
| t-3. | 49.025 | at Alabama   | Feb. 17 |
| 5.   | 49.000 | at Missouri  | March 3 |

**BARS**

|      |        |             |          |
|------|--------|-------------|----------|
| 1.   | 49.375 | ARKANSAS    | Feb. 3   |
| 2.   | 49.225 | PITTSBURGH  | March 10 |
| 3.   | 49.200 | at Alabama  | Feb. 17  |
| 4.   | 49.150 | vs. Alabama | Jan. 29  |
| t-5. | 49.125 | GEORGIA     | Jan. 13  |
| t-5. | 49.125 | at Kentucky | Jan. 20  |
| t-5. | 49.125 | LSU         | Feb. 24  |

**BEAM**

|      |        |              |         |
|------|--------|--------------|---------|
| 1.   | 49.175 | at Alabama   | Feb. 17 |
| t-2. | 49.150 | at Florida   | Jan. 27 |
| t-2. | 49.150 | LSU          | Feb. 24 |
| 4.   | 49.075 | ARKANSAS     | Feb. 3  |
| 5.   | 49.050 | vs. Oklahoma | Feb. 10 |

**FLOOR**

|    |        |              |          |
|----|--------|--------------|----------|
| 1. | 49.325 | PITTSBURGH   | March 10 |
| 2. | 49.250 | at Missouri  | March 3  |
| 3. | 49.225 | GEORGIA      | Jan. 13  |
| 4. | 49.175 | at Florida   | Jan. 27  |
| 5. | 49.100 | vs. Oklahoma | Feb. 10  |





## INDIVIDUAL SEASON AND CAREER SCORES

**A'MIRACAL PHILLIPS :: SOPHOMORE**

| 2017          | VAULT | BARS | BEAM | FLOOR | AA  |
|---------------|-------|------|------|-------|-----|
| OREGON STATE  | ---   | ---  | ---  | ---   | --- |
| GEORGIA       | 9.550 | ---  | ---  | ---   | --- |
| at Kentucky   | ---   | ---  | ---  | ---   | --- |
| at Florida    | 9.725 | ---  | ---  | ---   | --- |
| vs. Alabama   | 9.750 | ---  | ---  | ---   | --- |
| ARKANSAS      | 9.800 | ---  | ---  | ---   | --- |
| vs. Oklahoma  | 9.750 | ---  | ---  | ---   | --- |
| at Alabama    | 9.750 | ---  | ---  | ---   | --- |
| LSU           | 9.750 | ---  | ---  | ---   | --- |
| at Missouri   | 9.800 | ---  | ---  | ---   | --- |
| PITTSBURGH    | 9.800 | ---  | ---  | ---   | --- |
| at SEC        | ---   | ---  | ---  | ---   | --- |
| NCAA Regional | ---   | ---  | ---  | ---   | --- |
| NCAA National | ---   | ---  | ---  | ---   | --- |
| Season RQS    | 9.770 | ---  | ---  | ---   | --- |
| Season High   | 9.800 | ---  | ---  | ---   | --- |
| Career High   | 9.850 | ---  | ---  | ---   | --- |

**EMMA SLAPPEY :: REDSHIRT FRESHMAN**

| 2017          | VAULT | BARS | BEAM | FLOOR | AA    |
|---------------|-------|------|------|-------|-------|
| OREGON STATE  | ---   | ---  | ---  | 9.700 | ---   |
| GEORGIA       | ---   | ---  | ---  | 9.800 | 9.850 |
| at Kentucky   | ---   | ---  | ---  | 9.775 | 9.825 |
| at Florida    | ---   | ---  | ---  | 9.800 | 9.900 |
| vs. Alabama   | ---   | ---  | ---  | 9.850 | 9.775 |
| ARKANSAS      | ---   | ---  | ---  | 9.325 | 9.050 |
| vs. Oklahoma  | ---   | ---  | ---  | 9.825 | 9.800 |
| at Alabama    | ---   | ---  | ---  | 9.800 | 9.650 |
| LSU           | ---   | ---  | ---  | 9.850 | ---   |
| at Missouri   | ---   | ---  | ---  | 9.800 | 9.875 |
| PITTSBURGH    | ---   | ---  | ---  | 9.825 | 9.775 |
| at SEC        | ---   | ---  | ---  | ---   | ---   |
| NCAA Regional | ---   | ---  | ---  | ---   | ---   |
| NCAA National | ---   | ---  | ---  | ---   | ---   |
| Season RQS    | ---   | ---  | ---  | 9.820 | 9.825 |
| Season High   | ---   | ---  | ---  | 9.850 | 9.900 |
| Career High   | ---   | ---  | ---  | 9.850 | 9.900 |

**MJ ROTT :: SENIOR**

| 2017          | VAULT | BARS  | BEAM  | FLOOR | AA     |
|---------------|-------|-------|-------|-------|--------|
| OREGON STATE  | 9.825 | ---   | ---   | 9.825 | ---    |
| GEORGIA       | 9.800 | ---   | ---   | 9.950 | ---    |
| at Kentucky   | 9.800 | ---   | ---   | 9.750 | ---    |
| at Florida    | 9.850 | ---   | ---   | 9.800 | ---    |
| vs. Alabama   | 9.700 | ---   | ---   | 9.825 | ---    |
| ARKANSAS      | 9.900 | ---   | ---   | 9.875 | ---    |
| vs. Oklahoma  | 9.850 | ---   | ---   | 9.825 | ---    |
| at Alabama    | 9.875 | ---   | ---   | 9.825 | ---    |
| LSU           | 9.825 | ---   | ---   | 9.850 | ---    |
| at Missouri   | 9.825 | ---   | ---   | 9.800 | ---    |
| PITTSBURGH    | 9.850 | ---   | ---   | 9.950 | ---    |
| at SEC        | ---   | ---   | ---   | ---   | ---    |
| NCAA Regional | ---   | ---   | ---   | ---   | ---    |
| NCAA National | ---   | ---   | ---   | ---   | ---    |
| Season RQS    | 9.850 | ---   | ---   | 9.860 | ---    |
| Season High   | 9.900 | ---   | ---   | 9.950 | ---    |
| Career High   | 9.975 | 9.825 | 9.900 | 9.950 | 38.925 |

**CARA STRICKLIN :: JUNIOR**

| 2017          | VAULT | BARS | BEAM | FLOOR | AA  |
|---------------|-------|------|------|-------|-----|
| OREGON STATE  | ---   | ---  | ---  | ---   | --- |
| GEORGIA       | ---   | ---  | ---  | ---   | --- |
| at Kentucky   | ---   | ---  | ---  | ---   | --- |
| at Florida    | ---   | ---  | ---  | ---   | --- |
| vs. Alabama   | ---   | ---  | ---  | ---   | --- |
| ARKANSAS      | ---   | ---  | ---  | ---   | --- |
| vs. Oklahoma  | ---   | ---  | ---  | ---   | --- |
| at Alabama    | ---   | ---  | ---  | ---   | --- |
| LSU           | ---   | ---  | ---  | ---   | --- |
| at Missouri   | ---   | ---  | ---  | ---   | --- |
| PITTSBURGH    | ---   | ---  | ---  | ---   | --- |
| at SEC        | ---   | ---  | ---  | ---   | --- |
| NCAA Regional | ---   | ---  | ---  | ---   | --- |
| NCAA National | ---   | ---  | ---  | ---   | --- |
| Average       | ---   | ---  | ---  | ---   | --- |
| Season High   | ---   | ---  | ---  | ---   | --- |
| Career High   | ---   | ---  | ---  | ---   | --- |

**LUCIA SCAGLIONE :: SENIOR**

| 2017          | VAULT | BARS | BEAM | FLOOR | AA  |
|---------------|-------|------|------|-------|-----|
| OREGON STATE  | ---   | ---  | ---  | 9.725 | --- |
| GEORGIA       | ---   | ---  | ---  | 9.800 | --- |
| at Kentucky   | ---   | ---  | ---  | 9.800 | --- |
| at Florida    | ---   | ---  | ---  | 9.825 | --- |
| vs. Alabama   | ---   | ---  | ---  | 9.800 | --- |
| ARKANSAS      | ---   | ---  | ---  | 9.850 | --- |
| vs. Oklahoma  | ---   | ---  | ---  | 9.850 | --- |
| at Alabama    | ---   | ---  | ---  | 9.875 | --- |
| LSU           | ---   | ---  | ---  | 9.800 | --- |
| at Missouri   | ---   | ---  | ---  | 9.875 | --- |
| PITTSBURGH    | ---   | ---  | ---  | 9.850 | --- |
| at SEC        | ---   | ---  | ---  | ---   | --- |
| NCAA Regional | ---   | ---  | ---  | ---   | --- |
| NCAA National | ---   | ---  | ---  | ---   | --- |
| Season RQS    | ---   | ---  | ---  | 9.850 | --- |
| Season High   | ---   | ---  | ---  | 9.875 | --- |
| Career High   | ---   | ---  | ---  | 9.875 | --- |

## 2017 EVENT TITLES

| MEET                                | VAULT | BARS   | BEAM          | FLOOR | ALL-AROUND |
|-------------------------------------|-------|--------|---------------|-------|------------|
| #13 OREGON STATE                    | Day   | ---    | ---           | Rott  | ---        |
| GEORGIA                             | ---   | ---    | ---           | Rott  | ---        |
| at #9 Kentucky                      | ---   | ---    | ---           | ---   | ---        |
| at #3 Florida                       | ---   | ---    | ---           | ---   | ---        |
| vs. #5 Alabama (Elevate Meet)       | ---   | Kopec  | ---           | ---   | ---        |
| ARKANSAS                            | Rott  | Cerio  | Krippner      | Rott  | ---        |
| vs. Oklahoma (Perfect 10 Challenge) | ---   | ---    | ---           | ---   | ---        |
| at Alabama                          | Rott  | Engler | ---           | ---   | ---        |
| LSU                                 | ---   | ---    | ---           | ---   | ---        |
| at Missouri                         | ---   | ---    | ---           | ---   | ---        |
| PITTSBURGH                          | Rott  | Day    | Slappey/Cerio | Rott  | Becker     |
| at SEC Championship                 | ---   | ---    | ---           | ---   | ---        |
| NCAA Regional Championship          | ---   | ---    | ---           | ---   | ---        |
| NCAA Championship                   | ---   | ---    | ---           | ---   | ---        |
| NCAA Super Six                      | ---   | ---    | ---           | ---   | ---        |
|                                     | 4     | 4      | 2             | 4     | 1          |



**KATIE BECKER**  
Fr. • AA • 5-4



**TELAH BLACK**  
So. • AA • 5-3



**SAMANTHA CERIO**  
So. • AA • 5-0



**GRACIE DAY**  
Fr. • AA • 5-4



**EMMA ENGLER**  
So. • AA • 5-3



**KENNEDY FINISTER**  
Jr. • AA • 5-1



**SARAH GARCIA**  
Jr. • VT • 5-3



**KULLEN HLAWEK**  
Sr. • AA • 5-1



**KELSEY KOPEC**  
R-Sr. • AA • 5-7



**TAYLOR KRIPPNER**  
So. • AA • 5-1



**ABBY MILLIET**  
Jr. • AA • 5-1



**KENDAL MOSS**  
Fr. • AA • 5-4



**A'MIRACAL PHILLIPS**  
So. • AA • 5-6



**MJ ROTT**  
Sr. • AA • 5-0



**LUCIA SCAGLIONE**  
Sr. • FX • 5-0



**EMMA SLAPHEY**  
R-Fr. • AA • 5-2



**CARA STRICKLIN**  
Jr. • AA • 5-5



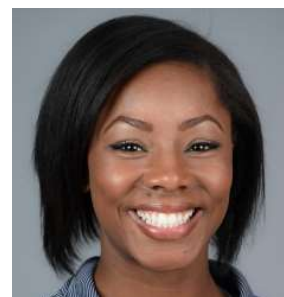
**JEFF GRABA**  
HEAD COACH



**KURT HETTINGER**  
ASSISTANT COACH



**MARY MCDANIEL**  
ASSISTANT COACH



**RACHEL INNISS**  
VOLUNTEER ASSISTANT



**DAWN SCHUELLER**  
DIRECTOR OF OPERATIONS