



# Year-by-Year Scores

1905-06 Won 5, Lost 1, Tied 1  
COACH: Mike Donahue  
CAPTAIN: Frank Jones

	AU	Opp.
Jan. 19 Tulane (H)	27	7
Feb. 7 Montgomery YMCA (H)	29	12
Feb. 7 Columbus YMCA (H)	16	18
Feb. 15 Mercer (H)	64	8
Feb. 16 Atlanta Athletic Club (A)	28	17
Feb. 17 Georgia Tech (A)	26	6
Mar. 16 Birmingham Athletic Club (A)	14	14

1906-07 Won 4, Lost 2  
COACH: Mike Donahue  
CAPTAIN: C.W. Woodruff

	AU	Opp.
Jan. 19 Tulane	35	15
Mercer	48	9
Feb. 14 Columbus YMCA (ot) (H)	29	27
Feb. 16 Birmingham Athletic Club (A)	23	29
Feb. 26 Columbus YMCA (A)	16	11
Birmingham Athletic Club	20	21

1907-08 Won 6, Lost 5  
COACH: Mike Donahue  
CAPTAIN: R.Y. Ware

	AU	Opp.
Feb. 5 Montgomery YMCA (A)	25	18
Columbus YMCA (A)	32	37
Feb. 8 Birmingham Athletic Club(H)	26	14
Feb. 15 Birmingham Athletic Club (A)	21	25
Feb. 16 Bessemer Athletic Club (A)	34	13
Wetumpka Athletic Club (H)	47	11
Montgomery YMCA	21	27
Wake Forest	38	13
Feb. 22 Montgomery YMCA (H)	27	31
Mar. 2 Columbus YMCA (H)	19	33
Georgia (N1)	34	20

1908-09 Won 4, Lost 3  
COACH: Mike Donahue  
CAPTAIN: T.C. Locke

	AU	Opp.
Georgia (A)	37	48
Jan. 8 Columbus YMCA (H)	14	41
Jan. 16 Bessemer Athletic Club (H)	14	17
Jan. 18 Tulane (H)	29	15
Jan. 27 Augusta Athletic Assoc. (H)	37	9
Feb. 4 Georgia Tech (A)	24	8
Mercer (A)	26	23

1909-10 Won 11, Lost 6  
COACH: Mike Donahue  
CAPTAIN: S. Gordy

	AU	Opp.
Wetumpka Athletic Club (H)	56	12
Columbus YMCA (A)	8	44
Mercer (A)	38	20
Georgia (A)	35	40
Atlanta Athletic Club (A)	23	44
Mercer (H)	56	19
Bessemer Athletic Club (H)	26	18
Birmingham Athletic Club (A)	31	33
Bessemer Athletic Club (A)	23	10
Birmingham YMCA (A)	12	23
Birmingham H.S. (H)	29	16
Georgia (H)	56	21
Birmingham Ath. Club (H)	31	19
Montgomery YMCA (H)	24	16
Columbus YMCA (H)	16	42
Montgomery YMCA (A)	26	17
Birmingham Ath. Club (A)	26	19

1910-11 Won 3, Lost 5  
COACH: Mike Donahue  
CAPTAIN: L.A. Scarbrough

	AU	Opp.
Columbus YMCA	33	45
Georgia (A)	24	26
Birmingham Athletic Club	19	53
Bessemer Athletic Club	28	24
Birmingham H.S.	21	28
Birmingham YMCA	27	30
Texas	45	27
Nashville Athletic Club	36	34

1911-12 Won 2, Lost 6  
COACH: Mike Donahue  
CAPTAIN: E.A. Major

	AU	Opp.
Columbus YMCA	12	19
Atlanta Athletic Club	22	60
Georgia (A)	19	40
Birmingham Athletic Club	26	35
Birmingham H.S.	31	8
Birmingham Athletic Club	9	27
Bessemer Athletic Club	19	20
Feb. 10 LSU (H)	38	15

1912-13 Won 6, Lost 9  
COACH: Mike Donahue

	AU	Opp.
Jan. 10 Georgia (A)	12	92
Jan. 11 Atlanta Athletic Club (A)	30	62
Jan. 18 Mercer (H)	33	31
Jan. 23 Cumberland (H)	19	35
Jan. 24 Selma YMCA (A)	29	15
Jan. 25 Marion (A)	26	15
Feb. 5 Bessemer Athletic Club (A)	9	31
Feb. 6 Birmingham Athletic Club (A)	12	35
Feb. 7 Birmingham High School (A)	24	34
Feb. 8 Montgomery YMCA (H)	39	23
Feb. 12 Georgia Tech (A)	36	27
Columbus YMCA (H)	13	77
Feb. 22 Georgia Tech (H)	23	19
Mar. 1 Mercer (A)	19	36
Mar. 1 Georgia (H)	21	67

1913-14 Won 3, Lost 10  
COACH: Mike Donahue  
CAPTAIN: E.E. Clements

	AU	Opp.
Jan. 9 Columbus YMCA (A)	3	74
Jan. 10 Atlanta Athletic Club (A)	20	70
Jan. 16 Georgia (A)	16	80
Jan. 17 Wetumpka Ath. Club (H)	82	17
Jan. 23 Birmingham Athletic Club (H)	19	42
Jan. 24 Montgomery YMCA (H)	24	20
Jan. 30 Bessemer Athletic Club (A)	27	68
Jan. 31 Mercer (H)	25	23
Feb. 14 Columbus YMCA (H)	11	41
Feb. 20 Georgia Tech (A)	12	50
Feb. 21 Mercer (A)	13	60
Feb. 23 Georgia Tech (H)	6	21
Feb. 28 Georgia (H)	15	46

1914-15 Won 3, Lost 5  
COACH: Mike Donahue  
CAPTAIN: E.E. Clements

	AU	Opp.
Jan. 18 Atlanta Athletic Club (A)	29	43
Jan. 22 Mississippi State (A)	16	44
Jan. 23 Mississippi State (A)	11	32
Jan. 30 Atlanta Athletic Club (A)	18	76
Feb. 22 Mississippi State (H)	19	18
Feb. 23 Mississippi State (H)	21	17
Feb. 26 Mobile YMCA (H)	29	22
Feb. 27 Columbus YMCA (A)	29	51

1915-16 Won 3, Lost 5  
COACH: Mike Donahue  
CAPTAIN: W.C. Payne

	AU	Opp.
Jan. 21 Marion (H)	24	27
Jan. 21 Montgomery YMCA (H)	16	29
Feb. 3 Talladega Athletic Club (A)	4	31
Feb. 5 Marion (A)	18	6
Feb. 7 Georgia (A)	14	81
Feb. 8 Georgia (H)	18	45
Feb. 10 LSU (H)	24	23
Feb. 10 Montgomery YMCA (H)	58	18

1916-17 Won 2, Lost 2  
COACH: Mike Donahue  
CAPTAIN: M.H. Floyd

	AU	Opp.
Jan. 19 Georgia (A)	18	90
Jan. 26 Marion (H)	38	18
Jan. 31 Montgomery YMCA	43	25
Feb. 13 LSU (H)	13	37

1917-18 Won 2, Lost 3  
COACH: Mike Donahue  
CAPTAIN: M.H. Floyd

	AU	Opp.
Birmingham College	27	24
Jan. 18 LSU (A)	31	43
Jan. 19 LSU (A)	27	34
Jan. 20 Birmingham Athletic Club (H)	19	27
Birmingham College	19	11

1918-19 Won 4, Lost 3  
COACH: Mike Donahue

	AU	Opp.
Jan. 11 Montgomery YMCA (H)	59	10
Jan. 14 Georgia (A)	25	20
Jan. 18 Atlanta Athletic Club (A)	23	40
Jan. 25 Camp Benning (H)	68	9
Jan. 29 Georgia (H)	35	22
Feb. 15 Atlanta Athletic Club	26	36
Feb. 12 Birmingham Athletic Club	22	38

1919-20 Won 11, Lost 7  
COACH: Mike Donahue  
CAPTAIN: Jimmy Wade

	AU	Opp.
West Point Athletic Club (A)	38	8
Montgomery YMCA (H)	55	19
Georgia (A)	16	31
Jan. 22 Georgia Tech (A)	29	24
Birmingham Ath. Club (H)	27	21
Atlanta Athletic Club (A)	19	57
Clemson (A)	60	12
Charlotte YMCA (A)	30	36
VMI (A)	19	45
Washington & Lee (A)	10	34
Virginia (A)	27	21
VPI (A)	20	26
Atlanta Athletic Club (H)	24	44
Feb. 13 LSU (H)	33	21
Georgia (H)	31	29
Montgomery YMCA (A)	38	19
Birmingham Ath. Club (A)	25	20
Mar. 9 Georgia Tech (H)	26	17

1920-21 Won 5, Lost 8  
COACH: Mike Donahue  
CAPTAIN: H.B. Barks

	AU	Opp.
Jan. 11 Mercer (ot) (H)	36	31
Jan. 12 Georgia (H)	22	31
Jan. 15 Atlanta Athletic Club (A)	17	42
Jan. 17 Camp Benning (A)	11	19
Jan. 22 Georgia Tech (A)	30	28

Jan. 28	Vanderbilt	(A)	27	7
Jan. 29	Kentucky	(A)	25	40
Jan. 31	Centre College	(A)	24	42
Feb. 5	Georgia	(A)	23	29
Feb. 12	Birmingham Athletic Club	(A)	34	39
<b>Feb. 22</b>	<b>Spring Hill</b>	<b>(H)</b>	<b>41</b>	<b>32</b>
<b>Mar. 3</b>	<b>Clemson</b>	<b>(N1)</b>	<b>45</b>	<b>25</b>
Mar. 4	Georgia	(N1)	24	32

(N1) Southern Conference Tournament, Atlanta, Ga.

1921-22 Won 5, Lost 8  
 COACH: Wilbur Hutsell  
 CAPTAIN: Joe Harrison

		AU	Opp.	
Jan. 13	Mercer	(A)	7	31
Jan. 14	Atlanta Athletic Club	(A)	12	42
<b>Jan. 21</b>	<b>Clemson</b>	<b>(H)</b>	<b>32</b>	<b>19</b>
Jan. 28	Georgia Tech	(A)	17	35
Feb. 2	Mercer	(H)	26	28
<b>Feb. 4</b>	<b>Birmingham Ath. Club</b>	<b>(A)</b>	<b>29</b>	<b>19</b>
<b>Feb. 11</b>	<b>Georgia Tech</b>	<b>(H)</b>	<b>29</b>	<b>26</b>
Feb. 14	Camp Benning	(H)	17	30
<b>Feb. 18</b>	<b>Birmingham Ath. Club</b>	<b>(H)</b>	<b>34</b>	<b>21</b>
<b>Feb. 24</b>	<b>Newberry</b>	<b>(N1)</b>	<b>32</b>	<b>21</b>
Feb. 27	North Carolina	(N1)	27	32
	Georgia	(A)	15	39
	Georgia	(H)	17	31

(N1) Southern Conference Tournament, Atlanta, Ga.

1922-23 Won 7, Lost 7  
 COACH: Wilbur Hutsell  
 CAPTAIN: Charlie Dudley

		AU	Opp.	
Jan. 12	West Point Athletic Club	<b>25</b>	<b>18</b>	
	Georgia Tech	(A)	17	35
	Montgomery YMCA	<b>37</b>	<b>22</b>	
	Wofford	<b>42</b>	<b>19</b>	
	Georgia	(A)	29	35
	Clemson		19	24
	Wofford		19	20
	Furman		22	43
	Birmingham Athletic Club	<b>31</b>	<b>17</b>	
	Camp Benning	<b>24</b>	<b>19</b>	
	Birmingham Athletic Club		19	42
	Georgia	(H)	<b>45</b>	<b>16</b>
<b>Feb. 23</b>	<b>Georgia Tech</b>	<b>(H)</b>	<b>29</b>	<b>26</b>
Feb. 27	Mercer	(N1)	24	45

(N1) Southern Conference Tournament, Atlanta, Ga.

1923-24 Won 4, Lost 9  
 COACH: Wilbur Hutsell

		AU	Opp.	
<b>Jan. 8</b>	<b>Columbus YMCA</b>	<b>36</b>	<b>19</b>	
Jan. 11	Georgia Tech	(A)	24	39
Jan. 12	Atlanta Athletic Club		22	31
<b>Jan. 16</b>	<b>Camp Benning</b>	<b>42</b>	<b>18</b>	
<b>Jan. 19</b>	<b>Birmingham Athletic Club</b>	<b>44</b>	<b>23</b>	
Jan. 25	Tulane		19	32
Jan. 26	Tulane		22	27
Jan. 30	Georgia	(H)	17	32
Feb. 5	Georgia	(A)	18	33
Feb. 9	Georgia Tech	(H)	18	33
Feb. 16	Birmingham Athletic Club OT		32	36
<b>Feb. 29</b>	<b>Georgia Tech</b>	<b>(N1)</b>	<b>35</b>	<b>29</b>
Mar. 1	Alabama	(N1)	19	40

(N1) Southern Conference Tournament, Atlanta, Ga.

1924-25 Won 3, Lost 11  
 COACH: Herb Bunker

		AU	Opp.	
Dec. 18	Mercer	(A)	21	28
Dec. 19	Albany YMCA	(A)	21	28
Jan. 5	Tulane	(A)	18	33
Jan. 6	Tulane	(A)	31	45
Jan. 13	Camp Benning	(H)	27	36
Jan. 17	Georgia Tech	(H)	21	28
<b>Jan. 28</b>	<b>Montgomery YMCA</b>	<b>(H)</b>	<b>34</b>	<b>12</b>
Jan. 31	Mercer	(H)	27	38
<b>Feb. 7</b>	<b>Georgia Tech</b>	<b>(A)</b>	<b>15</b>	<b>14</b>
Feb. 10	Georgia	(A)	17	40
<b>Feb. 12</b>	<b>Camp Benning</b>	<b>(A)</b>	<b>38</b>	<b>36</b>
Feb. 14	Birmingham Athletic Club	(A)	25	35
Feb. 17	Georgia	(H)	21	37

Feb. 18	Virginia	(N1)	27	29
---------	----------	------	----	----

(N1) Southern Conference Tournament, Atlanta, Ga.

1925-26 Won 5, Lost 10  
 COACH: Mike Papke  
 CAPTAIN: Bill McKinney

		AU	Opp.	
<b>Dec. 6</b>	<b>Howard</b>	<b>(A)</b>	<b>32</b>	<b>16</b>
	<b>Birmingham-Southern</b>	<b>(A)</b>	<b>32</b>	<b>17</b>
<b>Jan. 9</b>	<b>Georgia Tech</b>	<b>(H)</b>	<b>32</b>	<b>28</b>
<b>Jan. 11</b>	<b>Howard</b>	<b>(H)</b>	<b>35</b>	<b>21</b>
Jan. 23	Birmingham Athletic Club	(A)	27	44
Jan. 28	Mobile YMCA	(A)	17	19
Jan. 29	Tulane	(A)	30	33
Jan. 30	Tulane	(A)	31	52
Feb. 4	Georgia	(A)	28	49
Feb. 5	North Carolina State	(A)	36	43
Feb. 6	VMI	(A)	25	41
Feb. 8	Kentucky	(A)	26	35
<b>Feb. 13</b>	<b>Birmingham Ath. Club</b>	<b>(H)</b>	<b>39</b>	<b>32</b>
Feb. 19	Georgia Tech	(A)	18	28
Feb. 26	North Carolina State	(N1)	26	32

(N1) Southern Conference Tournament, Atlanta, Ga.

<b>Feb. 9</b>	<b>Sewanee</b>	<b>(H)</b>	<b>36</b>	<b>16</b>
Feb. 11	Georgia Tech	(A)	28	42
<b>Feb. 12</b>	<b>Florida</b>	<b>(H)</b>	<b>35</b>	<b>34</b>
<b>Feb. 13</b>	<b>Florida</b>	<b>(H)</b>	<b>51</b>	<b>40</b>
<b>Feb. 15</b>	<b>Clemson</b>	<b>(H)</b>	<b>41</b>	<b>33</b>
<b>Feb. 16</b>	<b>Clemson</b>	<b>(H)</b>	<b>33</b>	<b>26</b>
	Georgia	(A)	19	21
Feb. 27	Georgia Tech	(H)	33	35

1926-27 Won 13, Lost 6  
 COACH: Mike Papke  
 CAPTAIN: Buck Ellis

		AU	Opp.	
Jan. 5	Georgia Tech (ot)	(A)	20	22
Jan. 10	Mississippi State	(H)	31	34
<b>Jan. 11</b>	<b>Mississippi State</b>	<b>(H)</b>	<b>27</b>	<b>24</b>
<b>Jan. 15</b>	<b>Florida</b>	<b>(H)</b>	<b>51</b>	<b>34</b>
<b>Jan. 28</b>	<b>Tulane</b>	<b>(A)</b>	<b>42</b>	<b>33</b>
<b>Jan. 29</b>	<b>Tulane</b>	<b>(A)</b>	<b>35</b>	<b>12</b>
<b>Jan. 30</b>	<b>Tulane</b>	<b>(H)</b>	<b>50</b>	<b>11</b>
Feb. 1	Tulane	(H)	33	30
Feb. 3	Clemson	(H)	45	26
Feb. 4	Clemson	(H)	45	23
Feb. 5	Florida	(A)	40	28
<b>Feb. 11</b>	<b>Sewanee</b>	<b>(H)</b>	<b>46</b>	<b>15</b>
<b>Feb. 12</b>	<b>Georgia Tech</b>	<b>(H)</b>	<b>42</b>	<b>24</b>
<b>Feb. 15</b>	<b>Tennessee</b>	<b>(A)</b>	<b>23</b>	<b>24</b>
Feb. 16	Chattanooga	(A)	34	39
Feb. 17	Vanderbilt	(A)	35	39
<b>Feb. 18</b>	<b>Sewanee</b>	<b>(A)</b>	<b>35</b>	<b>28</b>

<b>Feb. 25</b>	<b>Virginia Tech</b>	<b>(N1)</b>	<b>38</b>	<b>33</b>
Feb. 26	North Carolina	(N1)	15	28

(N1) Southern Conference Tournament, Atlanta, Ga.

1927-28 Won 20, Lost 2  
 COACH: Mike Papke  
 CAPTAIN: Fob James Sr.

		AU	Opp.	
	Montgomery YMCA	(H)	<b>38</b>	<b>12</b>
	White's Business College	(H)	<b>92</b>	<b>13</b>
<b>Jan. 7</b>	<b>Georgia Tech</b>	<b>(H)</b>	<b>56</b>	<b>29</b>
	So. College (Fla.)	(H)	<b>51</b>	<b>18</b>
<b>Jan. 13</b>	<b>Florida</b>	<b>(A)</b>	<b>39</b>	<b>23</b>
<b>Jan. 14</b>	<b>Florida</b>	<b>(A)</b>	<b>43</b>	<b>33</b>
<b>Jan. 18</b>	<b>Clemson</b>	<b>(H)</b>	<b>56</b>	<b>26</b>
<b>Jan. 19</b>	<b>Clemson</b>	<b>(H)</b>	<b>30</b>	<b>23</b>
<b>Jan. 27</b>	<b>Tulane</b>	<b>(A)</b>	<b>32</b>	<b>17</b>
<b>Jan. 28</b>	<b>Tulane</b>	<b>(A)</b>	<b>49</b>	<b>31</b>
<b>Jan. 29</b>	<b>Tennessee</b>	<b>(H)</b>	<b>63</b>	<b>14</b>
<b>Feb. 1</b>	<b>Vanderbilt</b>	<b>(H)</b>	<b>62</b>	<b>28</b>
<b>Feb. 3</b>	<b>Georgia</b>	<b>(H)</b>	<b>28</b>	<b>25</b>
<b>Feb. 9</b>	<b>Georgetown (Ky.)</b>	<b>(H)</b>	<b>41</b>	<b>25</b>
<b>Feb. 10</b>	<b>Ole Miss</b>	<b>(H)</b>	<b>42</b>	<b>43</b>
Feb. 11	Ole Miss	(H)	<b>58</b>	<b>38</b>
<b>Feb. 21</b>	<b>Florida</b>	<b>(H)</b>	<b>58</b>	<b>32</b>
<b>Feb. 22</b>	<b>Florida</b>	<b>(H)</b>	<b>50</b>	<b>28</b>
<b>Feb. 27</b>	<b>Clemson</b>	<b>(N1)</b>	<b>27</b>	<b>26</b>
<b>Feb. 28</b>	<b>Georgia Tech</b>	<b>(N1)</b>	<b>30</b>	<b>29</b>
<b>Mar. 1</b>	<b>Mississippi State</b>	<b>(N1)</b>	<b>42</b>	<b>34</b>
<b>Mar. 2</b>	<b>Ole Miss</b>	<b>(N1)</b>	<b>30</b>	<b>31</b>

(N1) Southern Conference Tournament, Atlanta, Ga.

1928-29 Won 6, Lost 15  
 COACH: George Bohler  
 CAPTAIN: Frank DuBose

		AU	Opp.	
	Camp Benning	(H)	<b>40</b>	<b>38</b>
	Birmingham Ath. Club	(H)	<b>37</b>	<b>34</b>
	Camp Benning	(A)	37	43
	LaGrange YMCA	(H)	29	32
	Birmingham Athletic Club	(A)	20	38
	So. College (Fla.)	(H)	<b>33</b>	<b>29</b>
Jan. 25	Florida	(A)	33	44
<b>Jan. 26</b>	<b>Florida</b>	<b>(A)</b>	<b>39</b>	<b>32</b>
Jan. 28	LSU	(H)	28	45
Jan. 29	LSU	(H)	28	65
Feb. 1	Clemson	(A)	20	46
Feb. 2	Georgia	(A)	31	39
Feb. 6	Georgia Tech	(A)	25	42
Feb. 8	Tulane	(H)	35	48



1928 SOUTHERN CONFERENCE TOURNAMENT RUNNER-UP  
 Front Row (L-R): Coach Mike Papke, Buck Ellis, Ebb James, Fob James, Jelly Akin, Moon Mullins, Manager Square Salter. Back Row (L-R): Shorty Smith, Louis James, Frank DuBose.







2008-09 Outlook  
2008-09 Tigers  
Coaching Staff  
Coliseum  
2007-08 Review  
Tiger Records  
AU Hoop History  
Tiger Tracks  
Administration

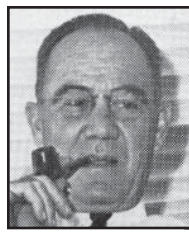
Jan. 24	Tulane	(H)	45	41
Jan. 25	Vanderbilt	(H)	45	44
Jan. 31	Tennessee	(H)	33	51
Feb. 1	Georgia Tech	(A)	39	48
Feb. 3	Mississippi State	(H)	44	48
Feb. 5	Georgia Tech	(H)	51	45
Feb. 8	Georgia	(H)	43	39
Feb. 10	Howard	(H)	35	21
Feb. 11	LSU	(H)	50	49
Feb. 13	Vanderbilt	(A)	39	47
Feb. 14	Sewanee	(A)	39	28
Feb. 15	Sewanee	(A)	46	31
Feb. 26	Georgia	(A)	31	36
Feb. 28	Alabama	(N1)	16	38

(N1) SEC Tournament, Louisville, Ky.

1941-42 Won 11, Lost 6 (9-5 SEC)  
COACH: Ralph Jordan

			AU	Opp.
Dec. 18	Mississippi State	(A)	39	29
Dec. 19	Ole Miss	(A)	34	31
Jan. 16	Vanderbilt	(A)	35	33
Jan. 23	Tennessee	(A)	23	43
Jan. 26	Vanderbilt	(H)	50	45
Jan. 31	Georgia Tech	(A)	42	48
Feb. 3	Georgia Tech	(H)	43	38
Feb. 6	Georgia	(A)	32	28
Feb. 13	Georgia	(H)	53	41
Feb. 14	Mississippi State	(H)	40	41
Feb. 16	LSU	(A)	49	63
Feb. 17	Tulane	(A)	41	50
Feb. 20	Florida	(H)	47	23
Feb. 21	Florida	(H)	38	36
Feb. 26	Vanderbilt	(N1)	36	34
Feb. 27	Tulane	(N1)	45	36
Feb. 28	Kentucky	(N1)	31	40

(N1) SEC Tournament, Louisville, Ky.



**BOB EVANS**  
1943, 45  
2 Year Career  
Record: 4-28  
(3-18 SEC)

1942-43 Won 1, Lost 14 (1-12 SEC)  
COACH: Bob Evans

			AU	Opp.
Dec. 11	Mississippi State	(A)	35	41
Dec. 12	Mississippi State	(A)	26	36
Dec. 17	Mississippi State	(H)	37	38
Dec. 18	Mississippi State	(H)	40	44
Jan. 11	Vanderbilt	(A)	39	54
Jan. 15	507 Paratrooper Infantry	(H)	30	40
Jan. 22	Georgia Tech	(H)	32	59
Jan. 23	Vanderbilt	(H)	43	48
Jan. 29	Tennessee	(A)	23	57
Jan. 30	Georgia Tech	(A)	21	53
Feb. 5	Georgia	(H)	47	32
Feb. 6	LSU	(H)	37	62
Feb. 8	Tulane	(H)	30	50
Feb. 13	Georgia	(A)	31	51
Feb. 25	LSU	(N1)	38	67

(N1) SEC Tournament, Louisville, Ky.

1943-44 (No Team)

1944-45 Won 3, Lost 14 (2-6 SEC)  
COACH: Bob Evans

			AU	Opp.
Jan. 13	Gunter Field		40	44
Jan. 18	Mercer	(H)	36	41
Jan. 20	Georgia	(A)	50	59
Jan. 20	Georgia Tech	(H)	41	74
Feb. 2	Mercer	(A)	34	40
Feb. 3	Georgia	(H)	43	59
Feb. 9	Jacksonville Navy	(A)	43	80
Feb. 10	Jacksonville Navy	(A)	23	51

Feb. 12	Florida	(H)	43	58
Feb. 13	Florida	(H)	42	40
Feb. 17	Georgia Tech	(A)	39	53
	Gunter Field		52	39
	Maxwell Field		41	48
	Maxwell Field		31	72
Feb. 19	Florida	(A)	43	41
Feb. 20	Florida	(A)	48	62
Feb. 29	Tennessee	(N1)	26	56

(N1) SEC Tournament, Louisville, Ky.

1945-46 Won 7, Lost 9 (7-6 SEC)  
COACH: Ralph Jordan

			AU	Opp.
Dec. 10	Mississippi State	(H)	55	47
Dec. 11	Mississippi State	(H)	37	26
Jan. 4	Georgia Tech	(A)	22	45
	Georgia	(A)	37	38
Jan. 16	Georgia Tech	(H)	26	53
Jan. 21	Georgia	(H)	40	37
	Maxwell Field		41	48
	Maxwell Field		35	36
Jan. 29	Florida	(H)	49	36
Jan. 30	Florida	(H)	51	40
	Tulane	(H)	48	56
Feb. 8	Florida	(A)	60	53
Feb. 9	Florida	(A)	34	53
Feb. 15	Mississippi State	(A)	40	30
Feb. 16	Mississippi State	(A)	31	39
Feb. 28	Kentucky	(N1)	24	69

(N1) SEC Tournament, Louisville, Ky.

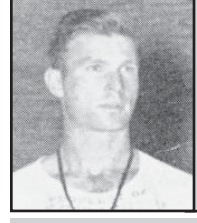


**V.J. EDNEY**  
1947  
1 Year Career  
Record: 3-18  
(1-15 SEC)

1946-47 Won 3, Lost 18 (1-15 SEC)  
COACH: V.J. Edney

			AU	Opp.
Dec. 13	Maxwell Field		65	38
Dec. 13	Ole Miss	(A)	38	58
Dec. 14	Mississippi State	(A)	35	61
	Mercer		54	55
Jan. 11	Tennessee	(H)	30	66
Jan. 15	Georgia Tech	(H)	42	55
Jan. 17	Florida	(A)	32	48
Jan. 18	Florida	(A)	28	39
Jan. 24	Vanderbilt	(H)	37	38
Jan. 25	Georgia	(H)	40	44
Jan. 29	Georgia Tech	(A)	49	65
Feb. 1	Vanderbilt	(A)	58	59
Feb. 3	Tennessee	(A)	27	63
Feb. 7	Florida	(H)	42	48
Feb. 8	Florida	(H)	36	30
	Maxwell Field		57	34
	Tulane		35	66
Feb. 15	LSU	(A)	53	76
	Mercer		47	71
	Georgia	(A)	45	60
Feb. 28	Kentucky	(N1)	18	84

(N1) SEC Tournament, Louisville, Ky.



**DANNY DOYLE**  
1948-49  
2 Year Career  
Record: 21-25  
(12-18 SEC)

1947-48 Won 12, Lost 10 (7-7 SEC)  
COACH: Danny Doyle

Dec. 6	Mississippi State	(H)	35	49
--------	-------------------	-----	----	----

Dec. 12	Florida	(A)	43	41
Dec. 13	Florida	(A)	39	47
	Tulane	(A)	37	70
	Illinois Wesleyan	(A)	44	42
	Washington	(A)	29	59

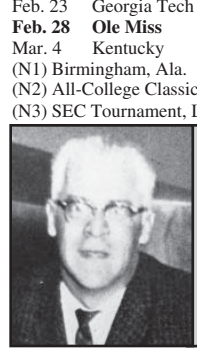
Jan. 12	Ole Miss	(H)	59	50
Jan. 16	Georgia	(H)	52	41
Jan. 19	Mercer	(A)	72	53
Jan. 21	Vanderbilt	(H)	46	41
Jan. 23	LSU	(A)	51	48
Jan. 30	Georgia Tech	(H)	38	31
Feb. 2	Vanderbilt	(A)	47	55
Feb. 5	Florida	(H)	53	50
Feb. 6	Florida	(H)	37	39
Feb. 12	Oglethorpe	(H)	55	23
Feb. 13	Oglethorpe	(H)	65	31
	Mercer		46	63
Feb. 21	Georgia	(A)	36	74
Feb. 25	Georgia Tech	(A)	43	50
Feb. 28	Howard	(A)	33	32
Mar. 4	Tulane	(N1)	40	47

(N1) SEC Tournament, Louisville, Ky.

1948-49 Won 9, Lost 15 (5-11 SEC)  
COACH: Danny Doyle

			AU	Opp.
Dec. 3	Howard	(A)	57	30
Dec. 4	Birmingham Southern	(A)	40	32
Dec. 11	Mississippi State	(H)	53	54
Dec. 21	Alabama	(N1)	45	46
Dec. 27	Baylor	(N2)	44	59
Dec. 28	Colorado State	(N2)	41	46
Dec. 29	Southern Methodist	(N2)	41	59
Jan. 5	Alabama	(H)	38	45
Jan. 8	Florida	(A)	45	61
Jan. 11	Georgia Tech	(H)	41	33
Jan. 14	Georgia	(A)	52	55
Jan. 17	Ole Miss	(A)	43	47
Jan. 18	Mississippi State	(A)	43	47
Jan. 22	Vanderbilt	(H)	48	46
Jan. 27	Alabama	(A)	37	39
Jan. 31	Tulane	(H)	51	56
Feb. 5	Vanderbilt	(A)	42	52
	Troy State		69	44
	Livingston State		49	44
Feb. 17	Florida	(H)	44	43
	Georgia		53	47
Feb. 23	Georgia Tech	(A)	57	66
Feb. 28	Ole Miss	(H)	65	61
Mar. 4	Kentucky	(N3)	39	70

(N1) Birmingham, Ala. (N2) All-College Classic, Oklahoma City, Okla. (N3) SEC Tournament, Louisville, Ky.



**JOEL EAVES**  
1950-63  
14 Year Career  
Record: 213-100  
(124-75 SEC)

1949-50 Won 17, Lost 7 (12-6 SEC)  
COACH: Joel Eaves  
CAPTAIN: Bill Lynn

			AU	Opp.
Dec. 1	Birmingham Southern	(H)	79	49
Dec. 2	Howard	(A)	59	36
Dec. 9	Ole Miss	(H)	64	60
Dec. 10	Howard	(H)	73	49
Dec. 13	Troy State	(H)	77	40
Dec. 20	Alabama	(H)	45	40
Jan. 4	Birmingham Southern	(A)	70	48
Jan. 10	Georgia Tech	(A)	49	65
Jan. 12	Mississippi State	(A)	65	64
Jan. 14	Florida	(H)	72	46
Jan. 21	Vanderbilt	(H)	47	58
Jan. 28	Alabama	(A)	66	58
Jan. 30	Ole Miss	(A)	77	63
Feb. 1	Mississippi State	(A)	65	60
Feb. 4	LSU	(H)	70	66
Feb. 6	Vanderbilt	(A)	51	63
Feb. 9	Georgia	(H)	67	54

# AUBURN





Feb. 11	Tulane	(A)	64	60
Feb. 13	LSU	(A)	61	76
Feb. 18	Alabama	(H)	67	58
Feb. 20	Florida	(A)	41	43
Feb. 22	Georgia Tech	(H)	53	61
Feb. 25	Georgia	(A)	55	46
Mar. 3	LSU	(N1)	45	73

1950-51 Won 12, Lost 10 (6-8 SEC)  
COACH: Joel Eaves  
CAPTAIN: Don Lanford

			AU	Opp.
Nov. 27	Troy State	(H)	96	57
Nov. 30	Birmingham Southern	(A)	57	56
Dec. 1	Howard	(A)	70	57
Dec. 6	Birmingham Southern	(H)	69	57
Dec. 9	Ole Miss	(H)	61	65
Dec. 13	Howard	(H)	70	53
Dec. 19	Alabama	(A)	46	70
Jan. 5	Kentucky (NR,3)	(A)	35	79
Jan. 6	Vanderbilt	(A)	51	61
Jan. 8	Tennessee	(A)	63	59
Jan. 13	Georgia (ot)	(H)	69	68
Jan. 18	Alabama	(H)	64	65
Jan. 27	Georgia	(A)	61	49
Jan. 31	Georgia Tech	(A)	44	64
Feb. 3	Tulane	(H)	92	71
Feb. 5	LSU	(H)	74	75
Feb. 10	Alabama	(A)	44	63
Feb. 14	Georgia Tech	(H)	75	63
Feb. 17	Florida	(A)	61	82
Feb. 23	Florida (ot)	(H)	83	77
Feb. 24	Mississippi State	(H)	92	85
Mar. 2	Kentucky (NR,1)	(N1)	54	84

1951-52 Won 14, Lost 12 (6-8 SEC)  
COACH: Joel Eaves  
CAPTAIN: Roger Weldon

			AU	Opp.
Nov. 27	Troy State	(H)	83	58
Nov. 29	Birmingham Southern	(A)	65	59
Nov. 30	Howard	(A)	69	39
Dec. 4	Maxwell Field	(H)	75	41
Dec. 5	Howard	(H)	88	51
Dec. 8	Georgia	(A)	62	48
Dec. 15	Birmingham Southern	(H)	79	46
Dec. 19	Maxwell Field	(A)	63	54
Dec. 28	Davidson	(N1)	66	59
Dec. 29	Georgia Tech	(N1)	62	79
Dec. 29	South Carolina	(N1)	67	70
Jan. 3	Florida	(A)	63	64
Jan. 9	Georgia Tech	(A)	54	56
Jan. 12	Vanderbilt	(H)	61	73
Jan. 18	Mississippi State	(A)	68	61
Jan. 19	Ole Miss	(A)	58	76
Jan. 26	Georgia	(H)	65	51
Jan. 30	Kentucky	(H)	48	88
Feb. 2	Alabama	(H)	60	62
Feb. 8	Florida	(H)	61	52
Feb. 9	Tennessee	(H)	60	55
Feb. 13	Georgia Tech	(H)	50	58
Feb. 16	LSU	(A)	64	70
Feb. 18	Tulane	(A)	63	61
Feb. 23	Alabama	(A)	50	63
Feb. 28	Alabama	(N2)	49	63

(N1) Carolina Invitational, Charlotte, N.C.  
(N2) SEC Tournament, Louisville, Ky.

1952-53 Won 13, Lost 8 (6-7 SEC)  
COACH: Joel Eaves  
CAPTAIN: Bubber Farish

			AU	Opp.
Dec. 2	Howard	(H)	80	52
Dec. 6	Howard	(A)	80	74
Dec. 10	Georgia Tech	(H)	71	61
Dec. 13	Birmingham Southern	(A)	87	61
Dec. 19	Georgia	(N1)	71	49
Jan. 2	Memphis State	(N2)	78	64
Jan. 3	Ole Miss	(N2)	55	65
Jan. 6	Birmingham Southern	(H)	84	59
Jan. 9	Georgia	(A)	64	59

Jan. 14	Georgia Tech	(A)	61	79
Jan. 17	Alabama	(A)	51	61
Jan. 21	Georgia	(H)	78	69
Jan. 26	Tennessee	(A)	70	72
Jan. 31	Mississippi State	(H)	82	60
Feb. 4	Florida	(H)	62	66
Feb. 7	Vanderbilt	(A)	71	66
Feb. 11	Ole Miss	(H)	72	65
Feb. 14	LSU (NR,8)	(H)	57	65
Feb. 16	Tulane	(H)	65	70
Feb. 21	Florida	(A)	67	71
Feb. 28	Alabama	(H)	78	73

(N1) Birmingham, Ala.  
(N2) Memphis Invitational, Memphis, Tenn.

1953-54 Won 16, Lost 8 (8-6 SEC)  
COACH: Joel Eaves  
CAPTAIN: Bob Miller

			AU	Opp.
Dec. 1	Birmingham Southern	(H)	81	50
Dec. 4	Birmingham Southern	(A)	93	66
Dec. 5	Howard (ot)	(A)	70	63
Dec. 12	Georgia Tech	(N1)	83	56
Dec. 18	Georgia	(N2)	75	73
Dec. 19	Alabama	(N2)	62	70
Dec. 30	Vanderbilt (NR,19)	(A)	48	96
Jan. 2	Mississippi State	(N2)	76	75
Jan. 5	Howard	(H)	84	56
Jan. 9	Mississippi State	(A)	74	79
Jan. 11	Ole Miss	(A)	66	61
Jan. 16	Alabama	(A)	58	70
Jan. 20	Georgia Tech	(H)	80	56
Jan. 23	Georgia	(A)	81	66
Jan. 29	Florida	(A)	83	76
Feb. 6	Vanderbilt	(H)	76	73
Feb. 8	Georgia Tech	(A)	59	53
Feb. 13	Florida	(H)	85	65
Feb. 15	Georgia	(H)	80	61
Feb. 20	LSU (NR,13)	(A)	59	77
Feb. 22	Tulane	(A)	65	62
Feb. 27	Kentucky (NR,2)	(N1)	79	109
Mar. 1	Tennessee	(H)	86	92
Mar. 5	Alabama	(H)	55	57

(N1) Montgomery, Ala.  
(N2) Birmingham, Ala.

1954-55 Won 11, Lost 9 (6-8 SEC)  
COACH: Joel Eaves  
CAPTAIN: Bill Kirkpatrick

			AU	Opp.
Dec. 4	Birmingham Southern	(H)	90	77
Dec. 11	Jacksonville State	(H)	78	67
Dec. 17	Washington & Lee	(N1)	91	81
Dec. 18	Tennessee	(N1)	73	64
Jan. 5	Howard	(H)	98	77
Jan. 8	Mississippi State	(H)	79	58
Jan. 10	Ole Miss	(H)	85	81
Jan. 15	Alabama (20,16)	(N2)	78	99
Jan. 22	Georgia	(A)	83	88
Jan. 26	Georgia Tech	(H)	70	73
Jan. 29	Florida	(H)	91	69
Jan. 31	Georgia	(H)	78	76
Feb. 5	Vanderbilt (NR,20)	(A)	74	79
Feb. 7	Georgia Tech	(A)	67	75
Feb. 12	Florida	(A)	70	66
Feb. 19	LSU	(H)	75	71
Feb. 21	Tulane	(H)	79	90
Feb. 26	Kentucky (NR,2)	(A)	59	93
Feb. 28	Tennessee	(A)	77	86
Mar. 5	Alabama* (NR,11)	(N2)	80	84

(N1) Blue-Gray Tournament, Montgomery, Ala.  
(N2) Montgomery, Ala.

1955-56 Won 11, Lost 10 (8-6 SEC)  
COACH: Joel Eaves  
CAPTAIN: Jim O'Donnell

			AU	Opp.
Dec. 3	Birmingham Southern	(H)	81	64
Dec. 10	Howard	(H)	97	54
Dec. 16	Texas	(N1)	76	83
Dec. 17	Eastern Kentucky	(N1)	71	93
Dec. 20	Oklahoma City (NR,15)	(A)	58	76
Dec. 21	Rice (2ot)	(A)	80	82

Jan. 2	Florida	(H)	89	77
Jan. 7	Mississippi State	(A)	81	68
Jan. 9	Ole Miss	(A)	69	76
Jan. 14	Alabama (NR,19)	(N2)	77	86
Jan. 21	Georgia	(A)	60	59
Jan. 28	Jacksonville State	(H)	73	64
Feb. 4	Kentucky (NR,7)	(N2)	81	82
Feb. 7	Georgia Tech (ot)	(H)	77	74
Feb. 11	Florida	(H)	77	73
Feb. 13	Georgia	(H)	96	80
Feb. 18	LSU	(A)	80	71
Feb. 20	Tulane	(A)	75	86
Feb. 25	Tennessee	(H)	87	91
Feb. 27	Vanderbilt (NR,7)	(H)	74	65
Mar. 2	Alabama (NR,3)	(N2)	82	93

(N1) Blue-Gray Tournament, Montgomery, Ala.  
(N2) Montgomery, Ala.

1956-57 Won 13, Lost 8 (8-6 SEC)  
COACH: Joel Eaves  
CAPTAIN: Henry Sturkie

			AU	Opp.
Dec. 4	Jacksonville State	(H)	72	65
Dec. 8	Rice	(N1)	88	68
Dec. 17	Clemson	(N2)	89	64
Dec. 18	St. Joseph's	(N2)	66	64
Dec. 19	Wake Forest	(N2)	48	58
Jan. 2	Howard	(H)	101	70
Jan. 5	Mississippi State	(H)	86	66
Jan. 7	Ole Miss	(H)	88	66
Jan. 12	Georgia	(A)	72	75
Jan. 19	Alabama (ot)	(N3)	92	88
Jan. 22	Georgia Tech	(H)	74	81
Jan. 26	Georgia	(H)	73	66
Jan. 28	Florida	(H)	76	61
Feb. 2	Vanderbilt	(A)	78	83
Feb. 4	Georgia Tech (ot)	(A)	67	76
Feb. 9	Florida	(A)	73	70
Feb. 16	LSU	(H)	99	62
Feb. 18	Tulane	(H)	78	54
Feb. 23	Tennessee	(A)	75	85
Feb. 25	Kentucky (NR,3)	(A)	85	103
Mar. 1	Alabama (2ot)	(N3)	79	81

(N1) Birmingham, Ala.  
(N2) Carousel Tournament, Charlotte, N.C.  
(N3) Montgomery, Ala.

1957-58 Won 16, Lost 6 (11-3 SEC)  
COACH: Joel Eaves  
CAPTAIN: Rex Frederick

			AU	Opp.
Dec. 3	Jacksonville State	(H)	89	50
Dec. 7	Wake Forest	(N1)	78	66
Dec. 13	TCU	(N2)	75	63
Dec. 14	Mississippi State	(N2)	37	52
Dec. 19	Southern Methodist	(A)	65	75
Dec. 20	Baylor	(A)	53	62
Dec. 30	Howard	(H)	106	47
Jan. 4	Mississippi State (NR,9)	(A)	42	70
Jan. 6	Ole Miss	(A)	71	51
Jan. 11	Florida	(A)	66	90
Jan. 18	Alabama	(N3)	65	83
Jan. 22	Georgia Tech	(A)	80	72
Jan. 25	Georgia	(N1)	90	62
Feb. 1	Vanderbilt	(H)	77	69
Feb. 3	Georgia Tech	(H)	99	78
Feb. 8	Georgia	(H)	75	73
Feb. 10	Florida	(H)	76	69
Feb. 15	LSU	(A)	76	58
Feb. 17	Tulane	(A)	63	49
Feb. 22	Tennessee (NR,20)	(H)	72	66
Feb. 24	Kentucky (NR,13)	(N2)	64	63
Mar. 1	Alabama (16,NR)	(N3)	67	65

(N1) Columbus, Ga.  
(N2) Birmingham Classic, Birmingham, Ala.  
(N3) Montgomery, Ala.

1958 Final Wire Service Poll  
Associated Press

- |                  |               |
|------------------|---------------|
| 1. West Virginia | 7. Kansas     |
| 2. Cincinnati    | 8. Notre Dame |
| 3. Kansas State  | 9. Kentucky   |
| 4. San Francisco | 10. Duke      |
| 5. Temple        | 16. Auburn    |
| 6. Maryland      |               |



1958-59 Won 20, Lost 2 (12-2 SEC)  
COACH: Joel Eaves  
CAPTAINS: Rex Frederick, Jimmy Lee

		AU	Opp.
Dec. 2	Jacksonville State	(H) 111	54
Dec. 6	Baylor	(H) 71	60
Dec. 17	Florida State (13,NR)	(H) 95	74
Dec. 19	Wyoming (13,NR)	(N1) 70	47
Dec. 20	Alabama (13,NR)	(N1) 79	60
Dec. 27	Florence State (8,NR)	(H) 104	78
Dec. 29	Florida State (8,NR)	(A) 69	62
Jan. 3	Mississippi State (9,8)	(H) 97	66
Jan. 5	Ole Miss (9,NR)	(H) 60	47
Jan. 10	Florida (6,NR)	(A) 63	54
Jan. 17	Alabama (5,NR)	(N2) 57	55
Jan. 21	Georgia Tech (5,NR)	(H) 66	55
Jan. 24	Georgia (5,NR)	(A) 81	61
Jan. 31	Vanderbilt (4,NR)	(A) 64	61
Feb. 3	Georgia Tech (4,NR)	(A) 51	40
Feb. 7	Georgia (4,NR)	(H) 95	69
Feb. 9	Florida (4,NR)	(H) 93	71
Feb. 14	LSU (4,NR)	(H) 115	67
Feb. 16	Tulane (4,NR)	(H) 79	56
Feb. 21	Kentucky (2,3)	(A) 56	75
Feb. 23	Tennessee (2,NR)	(A) 55	56
Feb. 28	Alabama (6,NR)	(N2) 69	50

(N1) Birmingham Classic, Birmingham, Ala.  
(N2) Montgomery, Ala.

**1959 Final Wire Service Polls**

Associated Press	United Press International
1. Kansas State	1. Kansas State
2. Kentucky	2. Kentucky
3. Miss. State	3. Michigan State
4. Bradley	4. Cincinnati
5. Cincinnati	5. N.C. State
6. N.C. State	6. North Carolina
7. Michigan State	7. Miss. State
8. Auburn	8. Bradley
9. North Carolina	9. California
10. West Virginia	10. Auburn

1959-60 Won 19, Lost 3 (12-2 SEC)  
COACH: Joel Eaves  
CAPTAIN: Henry Hart

**SEC CHAMPIONS**

		AU	Opp.
Dec. 1	Florence State	(H) 95	69
Dec. 5	Troy State	(H) 72	46
Dec. 7	Howard	(H) 104	57
Dec. 12	Florida State	(H) 62	58
Dec. 18	Navy	(N1) 61	68
Dec. 19	Alabama	(N1) 59	52
Dec. 28	Florida State	(A) 76	63
Jan. 2	Mississippi State	(A) 64	48
Jan. 4	Ole Miss	(A) 56	64
Jan. 9	Florida	(A) 73	69
Jan. 16	Alabama	(N2) 69	66
Jan. 19	Georgia Tech (NR,6)	(A) 66	59
Jan. 23	Georgia	(A) 59	68
Jan. 30	Vanderbilt	(H) 55	54
Feb. 2	Georgia Tech (NR,6)	(H) 48	45
Feb. 6	Georgia	(H) 72	45
Feb. 8	Florida	(H) 89	51
Feb. 13	LSU (17,NR)	(A) 63	61
Feb. 15	Tulane (ot) (17,NR)	(A) 53	51
Feb. 20	Kentucky (17,NR)	(H) 61	60
Feb. 22	Tennessee (17,NR)	(H) 72	63
Feb. 27	Alabama (ot) (13,NR)	(N2) 63	61

(N1) Birmingham Classic, Birmingham, Ala.  
(N2) Montgomery, Ala.

**1960 Final Wire Service Polls**

Associated Press	United Press International
1. Cincinnati	1. California
2. California	2. Cincinnati
3. Ohio State	3. Ohio State
4. Bradley	4. Bradley
5. West Virginia	5. Utah
6. Utah	6. West Virginia
7. Indiana	7. Utah State
8. Utah State	8. Georgia Tech
9. St. Bonaventure	9. Villanova
10. Miami (Fla.)	10. Indiana
11. Auburn	17. Auburn

1960-61 Won 15, Lost 7 (8-6 SEC)  
COACH: Joel Eaves  
CAPTAINS: Porter Gilbert, Jimmy Fibbe

		AU	Opp.
Dec. 1	Livingston	(H) 90	50
Dec. 3	Huntingdon	(H) 66	44
Dec. 10	Florida State	(H) 74	57
Dec. 16	Virginia Tech (11,NR)	(N1) 76	73
Dec. 17	Alabama (11,NR)	(N1) 74	62
Jan. 2	Florence State (9,NR)	(H) 76	50
Jan. 7	Mississippi State (10,NR)	(H) 48	56
Jan. 9	Ole Miss	(H) 51	40
Jan. 13	Florida	(A) 53	58
Jan. 17	Florida State	(N2) 74	67
Jan. 21	Georgia	(N2) 78	68
Jan. 24	Georgia Tech (ot)	(H) 43	48
Jan. 28	Alabama (ot)	(N3) 66	71
Feb. 4	Vanderbilt	(A) 53	58
Feb. 7	Georgia Tech	(A) 38	36
Feb. 11	Georgia	(H) 73	69
Feb. 13	Florida	(H) 60	78
Feb. 18	LSU	(H) 69	65
Feb. 20	Tulane	(H) 63	44
Feb. 25	Tennessee	(A) 41	38
Feb. 27	Kentucky	(A) 51	77
Mar. 4	Alabama	(N3) 80	69

(N1) Birmingham Classic, Birmingham, Ala.  
(N2) Columbus, Ga.  
(N3) Montgomery, Ala.

1961-62 Won 18, Lost 6 (11-3 SEC)

COACH: Joel Eaves  
CAPTAIN: Bill Ross

		AU	Opp.
Dec. 4	Jacksonville State	(H) 73	37
Dec. 6	Southwestern Louisiana	(H) 62	46
Dec. 9	Florida State	(H) 52	56
Dec. 15	LSU	(N1) 67	50
Dec. 16	Virginia Tech	(N1) 77	63
Dec. 22	Texas A&M	(N2) 50	62
Dec. 23	Houston	(N2) 49	54
Dec. 30	Florida State	(A) 62	57
Jan. 2	Chattanooga	(H) 67	47
Jan. 6	Mississippi State (NR,9)	(A) 48	51
Jan. 8	Ole Miss	(A) 64	58
Jan. 13	Florida	(A) 40	43
Jan. 20	Alabama	(N3) 60	50
Jan. 23	Georgia Tech	(A) 52	40
Jan. 27	Georgia	(N4) 83	47
Feb. 3	Vanderbilt	(H) 89	68
Feb. 5	Georgia Tech	(H) 48	39
Feb. 10	Georgia	(H) 74	49
Feb. 12	Florida	(H) 64	60
Feb. 17	LSU	(A) 55	50
Feb. 19	Tulane	(A) 81	64
Feb. 24	Tennessee	(H) 60	51
Feb. 26	Kentucky (NR,3)	(H) 60	63
Mar. 4	Alabama	(N3) 62	49

(N1) Birmingham Classic, Birmingham, Ala.  
(N2) Houston Classic, Houston, Texas  
(N3) Montgomery, Ala.  
(N4) Columbus, Ga.

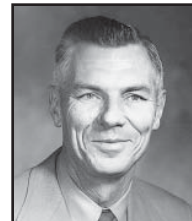
1962-63 Won 18, Lost 4 (10-4 SEC)

COACH: Joel Eaves  
CAPTAIN: Layton Johns

		AU	Opp.
Dec. 4	Howard	(H) 69	50
Dec. 8	Florida State	(H) 65	47
Dec. 14	Texas Tech	(H) 86	57
Dec. 17	Chattanooga	(H) 79	37
Dec. 19	Spring Hill	(H) 71	51
Dec. 21	Florida State (2ot)	(A) 77	70
Dec. 28	Xavier	(N1) 64	57
Dec. 29	Houston (ot)	(N1) 71	69
Jan. 5	Mississippi State	(H) 53	62
Jan. 7	Ole Miss	(H) 79	44
Jan. 12	Florida	(A) 81	56
Jan. 19	Alabama (ot)	(N2) 81	78
Jan. 22	Georgia Tech (NR,9)	(A) 64	69
Jan. 26	Georgia	(A) 78	62
Feb. 2	Vanderbilt	(A) 62	59
Feb. 9	Georgia (ot)	(H) 70	67
Feb. 11	Florida	(H) 88	59

Feb. 16	LSU	(H) 82	57
Feb. 18	Tulane	(H) 63	61
Feb. 23	Kentucky (9,NR)	(A) 59	78
Feb. 25	Tennessee	(A) 47	55
Mar. 2	Alabama (ot)	(N2) 74	67

(N1) Sugar Bowl Tournament, New Orleans, La.  
(N2) Montgomery, Ala.



**BILL LYNN**  
1964-73  
10 Year Career  
Record: 130-124  
(84-88 SEC)

1963-64 Won 11, Lost 12 (6-8 SEC)

COACH: Billy Lynn  
CAPTAINS: Larry Chapman, John Blackwell

		AU	Opp.
Dec. 3	Howard	(H) 102	44
Dec. 7	Florida State	(A) 67	69
Dec. 14	Southern Mississippi	(H) 80	74
Dec. 19	Texas Tech	(A) 71	83
Dec. 20	SMU	(A) 70	84
Dec. 27	Athens College	(H) 83	51
Dec. 30	Duke	(N1) 67	84
Dec. 31	Loyola (New Orleans)	(N1) 62	52
Jan. 4	Mississippi State (ot)	(A) 64	63
Jan. 6	Ole Miss (ot)	(A) 58	59
Jan. 11	Florida	(A) 46	63
Jan. 18	Alabama	(N2) 72	86
Jan. 25	Georgia	(A) 85	77
Jan. 28	Florida State	(H) 63	59
Feb. 1	Vanderbilt (NR,5)	(H) 81	63
Feb. 3	Georgia Tech	(H) 57	62
Feb. 8	Georgia	(H) 67	71
Feb. 10	Florida	(H) 79	58
Feb. 15	LSU	(A) 66	86
Feb. 17	Tulane	(A) 78	72
Feb. 22	Kentucky (NR,3)	(N2) 79	99
Feb. 24	Tennessee	(H) 62	68
Feb. 29	Alabama	(N2) 83	76

(N1) Sugar Bowl Tournament, New Orleans, La.  
(N2) Montgomery, Ala.

1964-65 Won 16, Lost 9 (11-5 SEC)

COACH: Bill Lynn  
CAPTAIN: Freddie Guy

		AU	Opp.
Dec. 1	Georgia Tech	(A) 60	52
Dec. 5	Florida State	(H) 92	68
Dec. 15	Houston	(N1) 48	50
Dec. 17	Rice	(N1) 94	71
Dec. 21	Georgia Southern	(H) 80	64
Dec. 27	Clemson	(N2) 65	77
Dec. 29	Furman	(N2) 107	86
Jan. 2	Mississippi State	(A) 71	70
Jan. 4	Ole Miss	(A) 77	53
Jan. 9	Florida	(H) 74	63
Jan. 11	Ole Miss	(H) 67	52
Jan. 16	Alabama	(N3) 93	68
Jan. 18	Kentucky	(A) 67	73
Jan. 23	Georgia	(H) 95	65
Jan. 25	Florida State	(A) 55	58
Jan. 30	Vanderbilt	(A) 77	105
Feb. 6	Georgia	(A) 60	62
Feb. 7	Florida	(A) 83	79
Feb. 13	LSU	(H) 101	60
Feb. 15	Tulane	(H) 87	73
Feb. 20	Kentucky	(H) 88	69
Feb. 22	Tennessee (NR,8)	(A) 38	69
Feb. 26	Georgia Tech	(H) 54	59
Mar. 1	Vanderbilt (NR,9)	(H) 64	79
Mar. 6	Alabama	(N3) 80	60

(N1) Bluebonnet Bowl Tournament, Houston, Texas  
(N2) Poinsettia Classic, Greenville, S.C.  
(N3) Montgomery, Ala.





## 1965-66 Won 16, Lost 10 (8-8 SEC)

COACH: Bill Lynn  
CAPTAIN: Lee DeFore

		AU	Opp.
Dec. 2	Rice	(H) 91	74
Dec. 7	Jacksonville State	(H) 78	50
Dec. 11	Jacksonville Univ.	(H) 77	69
Dec. 18	Georgia Tech	(A) 79	74
Dec. 20	Columbia (ot)	(N1) 76	75
Dec. 21	Florida State	(N1) 59	58
Dec. 27	Florida State	(N2) 80	64
Dec. 29	Dayton	(N3) 71	85
Dec. 30	Houston	(N3) 76	89
Jan. 3	Mississippi State	(H) 72	83
Jan. 8	LSU	(A) 74	66
Jan. 11	Tulane	(A) 92	58
Jan. 17	Tennessee	(H) 51	47
Jan. 22	Alabama	(N4) 90	71
Jan. 24	Florida	(H) 64	68
Jan. 29	Kentucky (NR,2)	(A) 78	115
Jan. 31	Vanderbilt (NR,4)	(A) 63	68
Feb. 5	Ole Miss	(A) 70	55
Feb. 9	Florida	(A) 86	66
Feb. 12	Kentucky (NR,1)	(H) 64	77
Feb. 14	Vanderbilt (NR,5)	(H) 76	91
Feb. 16	Georgia	(A) 74	83
Feb. 19	Georgia Tech	(H) 90	73
Feb. 23	Georgia	(H) 74	63
Feb. 26	Ole Miss	(H) 86	74
Mar. 5	Alabama	(N4) 83	88

(N1) Tampa Invitational, Tampa, Fla.

(N2) Pensacola, Fla.

(N3) Sugar Bowl Tournament, New Orleans, La.

(N4) Montgomery, Ala.

## 1966-67 Won 17, Lost 8 (12-6 SEC)

COACH: Bill Lynn  
CAPTAIN: Bobby Buisson

		AU	Opp.
Dec. 1	Citadel	(A) 105	83
Dec. 6	Louisiana Tech	(H) 88	77
Dec. 10	Southwestern Louisiana	(H) 78	68
Dec. 16	Tennessee	(A1) 49	73
Dec. 17	Miami (Fla.)	(N1) 73	87
Dec. 21	Georgia Tech (ot)	(A) 76	78
Dec. 27	Florida State	(N2) 67	59
Dec. 28	TCU	(N2) 80	79
Dec. 31	Vanderbilt (NR,9)	(H) 64	51
Jan. 3	LSU	(H) 70	59
Jan. 7	Ole Miss	(A) 67	56
Jan. 9	Miss. State (ot) (NR,10)	(A) 54	59
Jan. 16	Vanderbilt	(A) 65	71
Jan. 21	Kentucky	(A) 58	60
Jan. 28	Georgia	(H) 73	64
Jan. 30	Florida	(H) 87	61
Feb. 1	Georgia	(A) 62	49
Feb. 8	LSU	(A) 80	63
Feb. 11	Alabama	(N3) 66	63
Feb. 13	Mississippi State	(H) 68	57
Feb. 18	Florida	(A) 59	79
Feb. 20	Ole Miss	(H) 86	67
Feb. 25	Tennessee (NR,9)	(H) 45	54
Feb. 27	Kentucky	(H) 60	49
Mar. 3	Alabama (ot)	(N3) 99	96

(A1,N1) Volunteer Invitational, Knoxville, Tenn.

(N2) Mobile Invitational, Mobile, Ala.

(N3) Montgomery, Ala.

## 1967-68 Won 13, Lost 13 (8-10 SEC)

COACH: Bill Lynn  
CAPTAIN: Alex Howell

		AU	Opp.
Dec. 1	Citadel	(H) 70	73
Dec. 4	Vanderbilt (NR,9)	(A) 65	78
Dec. 9	Wake Forest	(A) 66	63
Dec. 16	Georgia Tech	(A) 63	52
Dec. 18	St. Bonaventure	(N1) 73	77
Dec. 19	Rutgers	(N1) 70	62
Dec. 27	Arkansas	(N2) 65	58
Dec. 28	Oklahoma City	(A2) 68	78
Dec. 29	Virginia Tech	(N2) 76	61
Jan. 3	LSU	(A) 72	76
Jan. 6	Ole Miss	(H) 90	71

Jan. 8	Mississippi State	(H) 62	66
Jan. 15	Vanderbilt (NR,8)	(H) 65	74
Jan. 20	Kentucky (NR,9)	(H) 74	73
Jan. 27	Georgia	(A) 74	76
Jan. 29	Florida	(A) 60	65
Jan. 31	Georgia	(H) 62	56
Feb. 7	LSU	(H) 74	69
Feb. 10	Alabama	(A) 63	64
Feb. 12	Mississippi State	(A) 74	72
Feb. 17	Florida	(H) 73	65
Feb. 19	Ole Miss	(A) 56	57
Feb. 24	Tennessee	(A) 53	52
Feb. 26	Kentucky (NR,5)	(A) 57	89
Mar. 2	Alabama	(H) 73	69
Mar. 3	Tennessee (ot)	(H) 54	63

(N1) Tampa Invitational, Tampa, Fla.

(A2,N2) All-College Tournament, Oklahoma City, Okla.

## 1968-69 Won 15, Lost 10 (10-8 SEC)

COACH: Bill Lynn  
CAPTAIN: Tom Perry

		AU	Opp.
Nov. 30	South Carolina	(A) 49	51
Dec. 14	Ole Miss	(A) 75	64
Dec. 16	Mississippi State	(A) 59	65
Dec. 18	Southwestern Louisiana	(A) 76	80
Dec. 19	Louisiana Tech	(A) 97	84
Dec. 21	Clemson	(N1) 92	72
Dec. 27	Southern Mississippi	(N2) 73	70
Dec. 28	Xavier	(N2) 75	73
Jan. 4	Florida	(A) 59	68
Jan. 6	Georgia	(A) 69	74
Jan. 11	LSU	(H) 90	71
Jan. 15	Alabama	(H) 78	63
Jan. 20	Georgia	(H) 84	85
Jan. 25	Vanderbilt	(A) 92	79
Feb. 1	Tennessee	(A) 59	64
Feb. 3	Kentucky (NR,5)	(A) 93	105
Feb. 8	Florida (ot)	(H) 81	80
Feb. 12	Mississippi State	(H) 87	68
Feb. 15	LSU	(A) 81	93
Feb. 17	Alabama	(A) 60	53
Feb. 22	Vanderbilt	(H) 85	75
Feb. 24	Georgia Tech	(H) 87	85
Mar. 1	Tennessee	(H) 71	60
Mar. 3	Kentucky (NR,17)	(H) 86	90
Mar. 8	Ole Miss	(H) 80	70

(N1) Birmingham, Ala.

(N2) Mobile Classic, Mobile, Ala.

## 1969-70 Won 15, Lost 11 (11-7 SEC)

COACH: Bill Lynn  
CAPTAINS: Carl Shetler, Bill Alexander

		AU	Opp.
Dec. 1	South Carolina (NR,1)	(H) 64	86
Dec. 4	Clemson	(A) 61	60
Dec. 6	Wake Forest	(H) 81	95
Dec. 13	Ole Miss	(H) 91	77
Dec. 15	Mississippi State	(H) 94	66
Dec. 17	North Carolina State	(A) 69	76
Dec. 19	St. Louis	(N1) 70	66
Dec. 20	Dartmouth	(N1) 85	76
Dec. 27	Buffalo	(N2) 84	61
Jan. 3	Florida	(H) 91	75
Jan. 5	Georgia	(H) 64	68
Jan. 10	LSU	(A) 79	70
Jan. 12	Alabama	(A) 86	77
Jan. 17	Georgia Tech	(A) 74	86
Jan. 19	Georgia	(A) 67	71
Jan. 24	Vanderbilt	(A) 84	75
Jan. 31	Tennessee	(H) 61	55
Feb. 2	Kentucky (NR,2)	(H) 83	84
Feb. 7	Florida	(A) 68	70
Feb. 11	Miss. State (ot)	(A) 71	69
Feb. 14	Alabama	(H) 121	78
Feb. 16	LSU	(H) 64	70
Feb. 21	Vanderbilt	(H) 74	92
Feb. 28	Tennessee	(A) 77	64
Mar. 2	Kentucky (NR,1)	(A) 81	102
Mar. 7	Ole Miss	(A) 67	66

(N1) Vanderbilt Classic, Nashville, Tenn.

(N2) Birmingham, Ala.

## 1970-71 Won 11, Lost 15 (8-10 SEC)

COACH: Bill Lynn  
CAPTAIN: Jimmy Walker

		AU	Opp.
Dec. 1	Louisiana Tech	(H) 93	87
Dec. 3	South Carolina (NR,2)	(A) 69	86
Dec. 5	No. Carolina St. (NR,19)	(H) 91	85
Dec. 12	Ole Miss	(A) 96	108
Dec. 14	Mississippi State	(A) 73	70
Dec. 19	Georgia Tech	(N1) 76	87
Dec. 21	Houston	(A) 76	79
Dec. 29	Xavier	(N2) 86	73
Dec. 30	Old Dominion	(A2) 76	89
Jan. 2	Florida	(A) 60	66
Jan. 4	Georgia	(A) 79	58
Jan. 9	LSU	(H) 92	106
Jan. 11	Alabama	(H) 83	72
Jan. 14	Georgia Tech	(A) 81	90
Jan. 18	Georgia	(H) 76	77
Jan. 23	Vanderbilt	(A) 86	107
Jan. 30	Tennessee (NR,8)	(A) 68	90
Feb. 1	Kentucky (NR,11)	(A) 76	114
Feb. 6	Florida	(H) 85	70
Feb. 10	Mississippi State	(H) 92	68
Feb. 13	Alabama	(A) 92	76
Feb. 15	LSU	(A) 94	114
Feb. 20	Vanderbilt	(H) 96	94
Feb. 27	Tennessee (NR,17)	(H) 71	76
Mar. 1	Kentucky (NR,10)	(H) 83	102
Mar. 6	Ole Miss	(H) 86	85

(N1) Birmingham, Ala.

(A2,N2) Old Dominion Tournament, Norfolk, Va.

## 1971-72 Won 10, Lost 16 (6-12 SEC)

COACH: Bill Lynn  
CAPTAIN: Henry Harris

		AU	Opp.
Dec. 1	South Carolina (NR,12)	(H) 63	84
Dec. 4	Athens College	(H) 95	71
Dec. 11	Georgia Tech	(A) 76	62
Dec. 13	Mississippi State	(H) 85	75
Dec. 16	Louisiana Tech	(A) 82	107
Dec. 18	Xavier	(N1) 60	71
Dec. 29	Furman	(A2) 103	78
Dec. 30	Clemson	(N2) 67	77
Jan. 3	Ole Miss	(H) 65	69
Jan. 8	Florida	(H) 79	74
Jan. 10	Georgia	(H) 99	93
Jan. 15	LSU	(A) 77	73
Jan. 22	Alabama	(A) 66	89
Jan. 24	Georgia	(A) 72	79
Jan. 29	Vanderbilt	(A) 77	85
Feb. 5	Tennessee	(H) 67	76
Feb. 7	Kentucky	(H) 72	78
Feb. 12	Florida	(A) 103	100
Feb. 14	LSU	(H) 85	77
Feb. 15	Georgia Tech	(H) 91	77
Feb. 19	Alabama	(H) 78	79
Feb. 21	Mississippi State	(A) 60	62
Feb. 26	Vanderbilt	(H) 87	93
Mar. 4	Tennessee	(A) 70	80
Mar. 6	Kentucky	(A) 67	102
Mar. 9	Ole Miss	(A) 83	89

(N1) Birmingham, Ala.

(N2) Poinsettia Tournament, Greenville, S.C.

## 1972-73 Won 6, Lost 20 (4-14 SEC)

COACH: Bill Lynn  
CAPTAIN: Gary England

		AU	Opp.
Nov. 25	Georgia Tech	(A) 83	90
Dec. 1	South Alabama	(H) 64	68
Dec. 7	Eastern Illinois	(H) 82	75
Dec. 15	Southern Cal	(A1) 66	73
Dec. 16	Western Kentucky	(N1) 72	87
Dec. 18	Dayton	(A) 63	106
Dec. 19	Xavier	(A) 60	67
Jan. 2	Ole Miss	(A) 66	58
Jan. 6	Florida	(A) 55	65
Jan. 8	Georgia (ot)	(A) 72	84
Jan. 13	LSU	(H) 60	79
Jan. 15	Mississippi State	(H) 82	77
Jan. 20	Alabama (NR,11)	(H) 64	76







Table with columns for date, opponent, result, AU, and Opp. Includes games from Dec 21 to Feb 28, mentioning opponents like Long Beach State, Southwestern Louisiana, Kentucky, Florida, Vanderbilt, Mississippi State, Alabama, Ole Miss, Georgia, LSU, and Tennessee.

1980-81 Won 11, Lost 16 (4-14 SEC)  
COACH: Sonny Smith  
CO-CAPTAINS: Darrell Lockhart, Earl Banks

Table with columns for date, opponent, result, AU, and Opp. Includes games from Dec 1 to Mar 4, mentioning opponents like Towson State, Tennessee, Armstrong State, Tennessee Tech, Eckerd College, Florida State\*, Austin Peay, Air Force (ot), Columbia, Ole Miss, Kentucky (NR,4), Florida, Vanderbilt, Mississippi State, LSU (NR,5), Georgia, Alabama, Ole Miss, Kentucky (NR,6), Florida, Vanderbilt, Georgia, Alabama, Ole Miss, Florida OT\*, and Tennessee (NR,10).

1981-82 Won 14, Lost 14 (7-11 SEC)  
COACH: Sonny Smith  
CO-CAPTAINS: Darrell Lockhart, Alvin Mumphord

Table with columns for date, opponent, result, AU, and Opp. Includes games from Nov 30 to Feb 6, mentioning opponents like Mississippi College, Stetson, Austin Peay, Tennessee Tech, Florida State, Cal State-Chico, William & Mary, Duke, Ole Miss, Kentucky (NR,3), Florida, Vanderbilt, Mississippi State, LSU, Georgia, Alabama (NR,13), Ole Miss, and Kentucky (NR,9) (ot).

Table with columns for date, opponent, result, AU, and Opp. Includes games from Feb 10 to Mar 4, mentioning opponents like Vanderbilt, Mississippi State, LSU, Georgia, Alabama (NR,17), Tennessee (NR,19), Mississippi State OT, and Kentucky (NR,15).

1982-83 Won 15, Lost 13 (8-10 SEC)  
COACH: Sonny Smith  
CO-CAPTAINS: Darrell Lockhart, Alvin Mumphord

Table with columns for date, opponent, result, AU, and Opp. Includes games from Nov 26 to Mar 10, mentioning opponents like UAB, Mercer, Florida State, Tennessee Tech, Stetson, Houston (NR,9), Florida International, Cal State Fullerton, Utah, Mississippi State, Alabama (NR,5), Florida, Kentucky (NR,6), Vanderbilt, Georgia (20,NR), Tennessee, LSU, Ole Miss, Florida, Vanderbilt, Georgia, Tennessee, LSU, Ole Miss, Mississippi State, Alabama, and Alabama (NR,1).

1983-84 Won 20, Lost 11 (12-6 SEC)  
COACH: Sonny Smith

Table with columns for date, opponent, result, AU, and Opp. Includes games from Nov 28 to Mar 15, mentioning opponents like Columbus College, UAB (ot), Florida State, Youngstown State, South Alabama, Mercer, Eastern Kentucky, Mississippi State, Wake Forest (NR,10), Villanova, Alabama, Florida, Kentucky (NR,2), Vanderbilt, Georgia, Tennessee, LSU (NR,10), Ole Miss (19,NR), Florida (19,NR), Kentucky (16,6), Vanderbilt, Georgia, Tennessee, LSU, Ole Miss, Mississippi State, Alabama, Vanderbilt, Tennessee, Kentucky (NR,3), and Richmond.

(N4) NCAA Tournament First Round, Charlotte, N.C.

1984 Final Wire Service Poll United Press International. List of 10 teams: 1. North Carolina, 2. Georgetown, 3. Kentucky, 4. DePaul, 5. Houston, 6. Illinois, 7. Arkansas, 8. Oklahoma, 9. UTEP, 10. Maryland, 19. Auburn.

1984-85 Won 22, Lost 12 (8-10 SEC)  
COACH: Sonny Smith

Table with columns for date, opponent, result, AU, and Opp. Includes games from Nov 24 to Mar 22, mentioning opponents like Stetson, Columbus College, UAB (NR,13), Armstrong State, Mercer, Radford, VCU, Delaware, West Virginia, Kentucky, Florida, Tennessee, Mississippi State, Alabama, Georgia, Ole Miss, LSU, Vanderbilt, Kentucky (ot), Florida (ot), Tennessee, Mississippi State, Alabama (2ot), Georgia, Ole Miss, LSU, Vanderbilt, Ole Miss, LSU, Florida, Alabama (ot), Purdue, Kansas (NR,13), and North Carolina (NR,7).

1985 Final Rankings USA Today and The Sporting News. USA Today list: 1. Villanova, 2. Georgetown, 3. St. John's, 4. Georgia Tech, 5. Memphis State, 6. Oklahoma, 7. North Carolina, 8. Louisiana Tech, 9. Michigan. The Sporting News list: 1. North Carolina, 2. Georgetown, 3. Kentucky, 4. Houston, 5. Maryland, 6. DePaul, 7. Illinois, 8. Fresno State, 9. UTEP.

1985-86 Won 22, Lost 11 (13-5 SEC)  
COACH: Sonny Smith

Table with columns for date, opponent, result, AU, and Opp. Includes games from Nov 22 to Jan 11, mentioning opponents like West Virginia (10,NR), Birmingham Southern, West Virginia, Kentucky Wesleyan, Western Kentucky, UAB (NR,16), Stetson, Southwestern Louisiana (ot), Central Florida, Boston College, Florida, Kentucky (NR,12), Tennessee, and Mississippi State.

# TIGERS



Jan. 16	Alabama	(A)	56	60
<b>Jan. 18</b>	<b>Georgia</b>	<b>(H)</b>	<b>84</b>	<b>69</b>
<b>Jan. 22</b>	<b>Ole Miss</b>	<b>(A)</b>	<b>73</b>	<b>61</b>
<b>Jan. 29</b>	<b>Vanderbilt</b>	<b>(H)</b>	<b>97</b>	<b>70</b>
Jan. 31	Kentucky (NR,8)	(A)	71	81
Feb. 4	LSU	(H)	61	63
<b>Feb. 6</b>	<b>Florida</b>	<b>(H)</b>	<b>67</b>	<b>65</b>
Feb. 8	Tennessee	(A)	79	80
<b>Feb. 12</b>	<b>Mississippi State</b>	<b>(H)</b>	<b>69</b>	<b>64</b>
<b>Feb. 15</b>	<b>Alabama (NR,18)</b>	<b>(H)</b>	<b>71</b>	<b>69</b>
<b>Feb. 19</b>	<b>Georgia (ot)</b>	<b>(A)</b>	<b>87</b>	<b>86</b>
<b>Feb. 22</b>	<b>Ole Miss</b>	<b>(H)</b>	<b>75</b>	<b>73</b>
<b>Feb. 26</b>	<b>LSU</b>	<b>(A)</b>	<b>92</b>	<b>86</b>
<b>Mar. 1</b>	<b>Vanderbilt</b>	<b>(A)</b>	<b>79</b>	<b>65</b>
Mar. 6	Mississippi State	(N5)	63	65
<b>Mar. 14</b>	<b>Arizona</b>	<b>(N6)</b>	<b>73</b>	<b>63</b>
<b>Mar. 16</b>	<b>St. John's (NR,4)</b>	<b>(N6)</b>	<b>81</b>	<b>65</b>
<b>Mar. 20</b>	<b>UNLV (NR,11)</b>	<b>(N7)</b>	<b>70</b>	<b>63</b>
Mar. 22	Louisville (NR,7)	(N7)	76	84

(N1) Big Apple NIT, Hartford, Conn.  
 (N2,A2) Wendy's Classic, Bowling Green, Ky.  
 (N3) Daytona Beach, Fla.  
 (N4) Red Lobster Classic, Orlando, Fla.  
 (N5) SEC Tournament, Lexington, Ky.  
 (N6) NCAA Tourney 1st/2nd Rounds, Long Beach, CA  
 (N7) NCAA Tourney Sweet 16/Elite 8, Houston, Texas

1986 Final Rankings			
Basketball Weekly		USA Today	
1. Louisville	1. Louisville		
2. Duke	2. Duke		
3. Kansas	3. Kansas		
4. LSU	4. Kentucky		
5. Kentucky	5. LSU		
6. North Carolina	6. Georgia Tech		
7. Georgia Tech	7. North Carolina		
8. Navy	8. Navy		
<b>9. Auburn</b>	<b>9. Auburn</b>		
10. St. John's	10. St. John's		

1986-87 Won 18, Lost 13 (9-9 SEC)  
 COACH: Sonny Smith

		AU	Opp.
Nov. 28	UAB (12,NR)	(A) 68	58
Dec. 1	Armstrong State (12,NR)	(H) 94	54
Dec. 11	Austin Peay (7,NR)	(H) 115	93
Dec. 13	Southwestern La. (7,NR)	(H) 107	91
Dec. 15	Eastern Kentucky (7,NR)	(A) 97	82
Dec. 18	Augusta College (6,NR)	(H) 89	66
Dec. 28	Iowa State (5,NR)	(N1) 89	87
Dec. 29	UTEP (5,NR)	(N1) 82	87
Jan. 3	Kentucky (5,11)	(H) 60	63
<b>Jan. 7</b>	<b>Georgia (ot) (13,NR)</b>	<b>(H)</b>	<b>62</b> <b>58</b>
<b>Jan. 10</b>	<b>Mississippi State (13,NR)</b>	<b>(A)</b>	<b>66</b> <b>52</b>
<b>Jan. 14</b>	<b>Tennessee (10,NR)</b>	<b>(H)</b>	<b>66</b> <b>56</b>
Jan. 17	Vanderbilt (10,NR)	(A)	75 91
Jan. 22	Alabama (17,13)	(A)	82 88
<b>Jan. 24</b>	<b>Ole Miss (17,NR)</b>	<b>(H)</b>	<b>85</b> <b>61</b>
Jan. 28	LSU (18,NR)	(A)	73 75
<b>Jan. 31</b>	<b>Florida (18,19)</b>	<b>(H)</b>	<b>81</b> <b>68</b>
Feb. 1	UNLV (18,3)	(H)	85 104
Feb. 4	Kentucky (20,NR)	(A)	71 75
Feb. 7	Georgia (20,NR)	(A)	71 75
<b>Feb. 9</b>	<b>Florida</b>	<b>(A)</b>	<b>84</b> <b>70</b>
<b>Feb. 12</b>	<b>Mississippi State</b>	<b>(H)</b>	<b>59</b> <b>45</b>
Feb. 14	Tennessee	(A)	84 103
Feb. 21	Alabama (NR,12)	(H)	75 77
<b>Feb. 23</b>	<b>Vanderbilt</b>	<b>(H)</b>	<b>91</b> <b>83</b>
Feb. 25	Ole Miss	(A)	67 73
<b>Mar. 1</b>	<b>LSU</b>	<b>(H)</b>	<b>100</b> <b>62</b>
<b>Mar. 6</b>	<b>Kentucky</b>	<b>(N2)</b>	<b>79</b> <b>72</b>
Mar. 7	Alabama (NR,9)	(N2)	68 87
<b>Mar. 12</b>	<b>San Diego</b>	<b>(N3)</b>	<b>62</b> <b>61</b>
Mar. 14	Indiana (NR,3)	(N3)	90 107

(N1) Sun Bowl Classic, El Paso, Texas  
 (N2) SEC Tournament, Atlanta, Ga.  
 (N3) NCAA Tournament, Indianapolis, Ind.

1987-88 Won 19, Lost 11 (11-7 SEC)  
 COACH: Sonny Smith

		AU	Opp.
Nov. 27	South Alabama	(N1) 120	67
Dec. 5	VCU	(H) 93	80
Dec. 7	UT-Martin	(H) 99	77

Dec. 11	San Jose State	(N2)	70	65
Dec. 12	Illinois (ot)	(N2)	103	107
Dec. 14	Grambling	(H)	98	59
Dec. 16	Mercer	(H)	80	48
Dec. 29	Villanova	(N3)	65	64
Dec. 30	Georgia Tech	(N3)	72	83
Jan. 6	Florida	(H)	72	67
<b>Jan. 9</b>	<b>Kentucky (NR,1)</b>	<b>(A)</b>	<b>53</b>	<b>52</b>
Jan. 13	Georgia (19,NR)	(A)	68	87
<b>Jan. 16</b>	<b>Mississippi State (19,NR)</b>	<b>(H)</b>	<b>65</b>	<b>57</b>
Jan. 20	Tennessee	(A)	64	75
Jan. 23	Vanderbilt	(H)	71	75
<b>Jan. 27</b>	<b>Alabama</b>	<b>(H)</b>	<b>84</b>	<b>74</b>
Jan. 30	Ole Miss	(A)	66	69
Feb. 3	LSU	(H)	69	78
<b>Feb. 6</b>	<b>Florida (NR,10)</b>	<b>(A)</b>	<b>58</b>	<b>57</b>
Feb. 10	Kentucky	(H)	62	69
<b>Feb. 13</b>	<b>Georgia</b>	<b>(H)</b>	<b>64</b>	<b>57</b>
<b>Feb. 17</b>	<b>Mississippi State</b>	<b>(A)</b>	<b>77</b>	<b>61</b>
<b>Feb. 20</b>	<b>Tennessee</b>	<b>(H)</b>	<b>73</b>	<b>68</b>
<b>Feb. 24</b>	<b>Vanderbilt (NR,17)</b>	<b>(A)</b>	<b>81</b>	<b>68</b>
Feb. 27	Alabama	(A)	77	82
<b>Mar. 2</b>	<b>Ole Miss</b>	<b>(H)</b>	<b>92</b>	<b>76</b>
<b>Mar. 5</b>	<b>LSU</b>	<b>(A)</b>	<b>89</b>	<b>80</b>
Mar. 11	Georgia	(N4)	60	65
<b>Mar. 17</b>	<b>Bradley (NR,11)</b>	<b>(N5)</b>	<b>90</b>	<b>86</b>
Mar. 19	Oklahoma (NR,8)	(N5)	87	107

(N1) Birmingham, Ala.  
 (N2) Illini Classic, Champaign, Ill.  
 (N3) Cotton States Classic, Atlanta, Ga.  
 (N4) SEC Tournament, Baton Rouge, La.  
 (N5) NCAA Tournament, Atlanta, Ga.

1988-89 Won 9, Lost 19 (2-16 SEC)  
 COACH: Sonny Smith

		AU	Opp.
Nov. 26	Mount St. Mary's	(H) 89	83
Nov. 29	Georgia State	(H) 74	70
Dec. 3	Mercer	(H) 87	66
Dec. 10	Texas Southern	(H) 109	81
Dec. 14	Vanderbilt	(A) 77	93
Dec. 17	Jackson State	(H) 74	51
Dec. 20	VCU	(A) 85	79
Dec. 28	Villanova	(N1) 83	84
Dec. 29	Central Florida	(N1) 95	68
Jan. 4	Tennessee (NR,19)	(H) 73	84
Jan. 7	LSU	(A) 77	104
Jan. 11	Mississippi State	(A) 56	69
Jan. 14	Florida	(H) 75	79
Jan. 18	Ole Miss	(H) 64	65
Jan. 25	Kentucky	(A) 76	86
Jan. 28	Alabama	(H) 64	67
Feb. 2	Georgia	(H) 62	75
Feb. 4	Tennessee	(A) 72	89
Feb. 8	LSU (NR,19)	(H) 91	104
<b>Feb. 11</b>	<b>Mississippi State</b>	<b>(H)</b>	<b>70</b> <b>68</b>
Feb. 15	Florida	(A) 79	90
Feb. 18	Ole Miss	(A) 77	80
<b>Feb. 20</b>	<b>Kentucky</b>	<b>(H)</b>	<b>77</b> <b>75</b>
Feb. 22	Vanderbilt	(H) 62	77
Feb. 25	UAB	(A) 76	105
Mar. 2	Alabama	(A) 58	74
Mar. 4	Georgia	(A) 76	80
Mar. 9	Ole Miss	(N2) 68	80

(N1) Red Lobster Classic, Orlando, Fla.  
 (N2) SEC Tournament, Knoxville, Tenn.

**TOMMY JOE EAGLES**  
 1989-94  
 5 Year Career  
 Record: 64-78  
 (29-55 SEC)

1989-90 Won 13, Lost 18 (8-10 SEC)  
 COACH: Tommy Joe Eagles  
 CAPTAINS: Derrick Dennison, Zane Arnold

		AU	Opp.
Nov. 24	Michigan State	(N1) 79	92
Nov. 25	Connecticut	(N1) 81	95

Nov. 26	Alaska-Anchorage	(A1)	94	109
Dec. 1	UAB	(H)	65	75
Dec. 3	Florida State	(A)	78	82
<b>Dec. 9</b>	<b>Duquesne</b>	<b>(N2)</b>	<b>79</b>	<b>74</b>
<b>Dec. 11</b>	<b>Alabama State</b>	<b>(H)</b>	<b>98</b>	<b>79</b>
Dec. 21	Tennessee Tech	(N3)	70	72
<b>Dec. 28</b>	<b>Navy</b>	<b>(N4)</b>	<b>75</b>	<b>61</b>
Dec. 29	Southern Mississippi	(N4)	73	84
Jan. 3	Tennessee	(A)	70	72
Jan. 6	LSU (NR,17)	(H)	70	77
<b>Jan. 10</b>	<b>Mississippi State</b>	<b>(H)</b>	<b>93</b>	<b>71</b>
Jan. 13	Florida	(A)	62	84
Jan. 17	Ole Miss	(A)	72	80
<b>Jan. 20</b>	<b>Vanderbilt</b>	<b>(H)</b>	<b>82</b>	<b>79</b>
<b>Jan. 24</b>	<b>Kentucky</b>	<b>(H)</b>	<b>74</b>	<b>70</b>
Jan. 27	Alabama (NR,24)	(A)	59	78
Jan. 31	Georgia	(A)	75	88
<b>Feb. 3</b>	<b>Tennessee</b>	<b>(H)</b>	<b>89</b>	<b>83</b>
<b>Feb. 5</b>	<b>Georgia State</b>	<b>(A)</b>	<b>79</b>	<b>66</b>
Feb. 7	LSU (NR,11)	(A)	71	82
<b>Feb. 10</b>	<b>Mississippi State</b>	<b>(A)</b>	<b>77</b>	<b>74</b>
<b>Feb. 14</b>	<b>Florida</b>	<b>(H)</b>	<b>75</b>	<b>55</b>
<b>Feb. 17</b>	<b>Ole Miss</b>	<b>(H)</b>	<b>95</b>	<b>84</b>
<b>Feb. 20</b>	<b>Vanderbilt</b>	<b>(A)</b>	<b>87</b>	<b>74</b>
Feb. 24	Kentucky	(A)	95	98
Feb. 28	Alabama	(H)	65	80
Mar. 3	Georgia	(H)	79	94
<b>Mar. 9</b>	<b>LSU (NR,16)</b>	<b>(N5)</b>	<b>78</b>	<b>76</b>
Mar. 10	Alabama	(N5)	71	87

(N1,A1) Great Alaska Shootout, Anchorage, Alaska  
 (N2) Birmingham, Ala.  
 (N3) Huntsville, Ala.  
 (N4) Blue Angels Classic, Pensacola, Fla.  
 (N5) SEC Tournament, Orlando, Fla.

1990-91 Won 13, Lost 16 (5-13 SEC)  
 COACH: Tommy Joe Eagles  
 CAPTAINS: John Caylor, Zane Arnold

		AU	Opp.
Nov. 24	Texas Southern	(H) 85	77
Nov. 26	Georgia State	(H) 83	65
Nov. 30	UAB	(A) 65	71
<b>Dec. 8</b>	<b>Ohio</b>	<b>(H)</b>	<b>75</b> <b>65</b>
<b>Dec. 13</b>	<b>Duquesne</b>	<b>(A)</b>	<b>75</b> <b>71</b>
<b>Dec. 15</b>	<b>Florida State</b>	<b>(H)</b>	<b>99</b> <b>96</b>
<b>Dec. 17</b>	<b>Texas A&amp;M</b>	<b>(H)</b>	<b>95</b> <b>71</b>
Dec. 27	Villanova	(N1)	71 88
<b>Dec. 28</b>	<b>Tulane</b>	<b>(N1)</b>	<b>84</b> <b>71</b>
Jan. 3	Alabama	(H)	56 68
Jan. 5	Florida	(A)	82 84
<b>Jan. 9</b>	<b>Ole Miss</b>	<b>(A)</b>	<b>62</b> <b>60</b>
Jan. 12	LSU	(H)	84 96
Jan. 16	Vanderbilt	(H)	59 80
<b>Jan. 19</b>	<b>Tennessee</b>	<b>(A)</b>	<b>67</b> <b>63</b>
<b>Jan. 23</b>	<b>Georgia (2ot)</b>	<b>(A)</b>	<b>59</b> <b>58</b>
Jan. 26	Mississippi State	(H)	64 84
Jan. 29	Kentucky (NR,10)	(H)	81 89
Feb. 2	Alabama	(A)	80 88
Feb. 6	Florida (ot)	(H)	84 87
<b>Feb. 9</b>	<b>Ole Miss</b>	<b>(H)</b>	<b>72</b> <b>69</b>
Feb. 13	LSU (NR,20)	(A)	61 98
Feb. 16	Vanderbilt	(A)	70 90
<b>Feb. 19</b>	<b>Tennessee</b>	<b>(H)</b>	<b>74</b> <b>65</b>
Feb. 23	Georgia	(H)	77 86
Feb. 27	Mississippi State	(A)	76 94
Mar. 2	Kentucky (NR,13)	(A)	93 114
<b>Mar. 8</b>	<b>LSU (NR,16)</b>	<b>(N2)</b>	<b>92</b> <b>77</b>
Mar. 9	Alabama (NR,24)	(N2)	59 77

(N1) USF&G Sugar Bowl Tournament, New Orleans, La.  
 (N2) SEC Tournament, Nashville, Tenn.

1991-92 Won 12, Lost 15 (5-11 SEC)  
 COACH: Tommy Joe Eagles  
 CAPTAINS: Chris Brandt, Champ Wrencher

		AU	Opp.
Nov. 25	SIU-Edwardsville	(H) 109	86
Nov. 29	UAB	(N1) 74	88
<b>Dec. 4</b>	<b>Texas A&amp;M</b>	<b>(A)</b>	<b>86</b> <b>83</b>
<b>Dec. 11</b>	<b>Troy State</b>	<b>(H)</b>	<b>141</b> <b>116</b>
<b>Dec. 14</b>	<b>Southern Miss</b>	<b>(H)</b>	<b>93</b> <b>78</b>
Dec. 17	UNLV	(A)	82 85
<b>Dec. 20</b>	<b>Slippery Rock</b>	<b>(N2)</b>	<b>93</b> <b>66</b>
Dec. 21	South Alabama	(N2)	87 107
<b>Dec. 28</b>	<b>Eastern Kentucky</b>	<b>(N3)</b>	<b>104</b> <b>92</b>









Mar. 11 Southern Miss (NIT) (H) 77 62  
 Mar. 16 Marquette (NIT) (ot) (A) 60 75  
 (N1) NABC Classic, Albuquerque, N.M.  
 (N2) Cougar Classic, Provo, Utah  
 (N3) Holiday Hardwood Classic, BJCC, Birmingham, Ala.  
 (N4) SEC Tournament, Georgia Dome, Atlanta, Ga.

1998-99 Won 29, Lost 4 (14-2 SEC -- SEC Champions)  
 COACH: Cliff Ellis  
 CAPTAINS: Bryant Smith, Doc Robinson

	AU	Opp.
Nov. 13 Southeastern Louisiana (H) 114 60		
Nov. 16 Florida A&M (H) 94 47		
Nov. 19 Central Florida (H) 77 42		
Nov. 23 BYU (H) 62 43		
Nov. 27 Rutgers (N1) 70 55		
Nov. 29 Hawaii (A1) 84 57		
Dec. 3 UNC-Asheville (H) 91 60		
Dec. 6 Florida State (A) 80 68		
Dec. 12 UAB (24,NR) (A2) 77 64		
Dec. 15 Wofford (18,NR) (H) 79 51		
Dec. 19 Navy (18,NR) (A) 88 70		
Dec. 29 Bethune-Cookman (15,NR)(H) 99 46		
Jan. 2 Tennessee (15,NR) (H) 90 62		
Jan. 6 Arkansas (14,18) (H) 83 66		
Jan. 9 LSU (14,NR) (A) 73 70		
Jan. 13 Ole Miss (8,NR) (A) 74 59		
Jan. 16 Florida (8,NR) (H) 88 69		
Jan. 20 Kentucky (6,7) (A) 62 72		
Jan. 23 Alabama (6,NR) (A) 73 58		
Jan. 27 Mississippi State (7,NR) (H) 64 54		
Jan. 30 Georgia (7,NR) (A) 85 74		
Feb. 3 South Carolina (6,NR) (A) 76 48		
Feb. 6 LSU (6,NR) (H) 80 54		
Feb. 9 Ole Miss (3,NR) (H) 95 66		
Feb. 13 Alabama (3,NR) (H) 102 61		
Feb. 17 Vanderbilt (3,NR) (H) 81 63		
Feb. 24 Arkansas (2,NR) (A) 88 104		
Feb. 27 Mississippi State (2,NR) (A) 76 73		
Mar. 5 Alabama (4,NR) (N3) 93 61		
Mar. 6 Kentucky (4,14) (N3) 57 69		
Mar. 11 Winthrop (4,NR) (N4) 80 41		
Mar. 13 Oklahoma State (4,NR) (N4) 81 74		
Mar. 18 Ohio State (4,14) (N5) 64 72		
(N1) United Airlines Tip-off Classic, Honolulu, Hawaii		
(A2) Arby's Hardwood Classic, BJCC, Birmingham, Ala.		
(N3) SEC Tournament, Georgia Dome, Atlanta, Ga.		
(N4) NCAA Tourney 1st/2nd Rounds, Indianapolis, Ind.		
(N5) NCAA Tournament Sweet 16, Knoxville, Tenn.		

**1999 Final Rankings**

Associated Press	USA Today/ESPN
1. Duke	1. Connecticut
2. Michigan State	2. Duke
3. Connecticut	3. Michigan State
4. Auburn	4. Ohio State
5. Maryland	5. Kentucky
6. Utah	5. St. John's
7. Stanford	7. Auburn
8. Kentucky	8. Maryland
9. St. John's	9. Stanford
10. Miami, Fla.	10. Utah

1999-2000 Won 24, Lost 10 (9-7 SEC)  
 COACH: Cliff Ellis  
 CAPTAINS: Doc Robinson, Chris Porter

	AU	Opp.
Nov. 19 UAB (3,NR) (H) 65 59		
Nov. 21 Arkansas-Pine Bluff (3,NR)(H) 100 44		
Nov. 27 Stanford (2,7) (N1) 58 67		
Dec. 1 Belmont (5,NR) (H) 65 56		
Dec. 5 Florida State (5,NR) (H) 55 54		
Dec. 11 Pennsylvania (8,NR) (N2) 77 70		
Dec. 13 Coppin State (6,NR) (H) 63 35		
Dec. 16 Bradley (6,NR) (N3) 78 64		
Dec. 20 Puerto Rico-Mayaguez (6,NR)(A4) 109 52		
Dec. 21 Virginia Tech (6,NR) (N4) 73 63		
Dec. 22 Pepperdine (6,NR) (N4) 87 76		
Dec. 30 Southern Miss (4,NR) (H) 56 50		
Jan. 2 Stony Brook (4,NR) (H) 100 45		
Jan. 8 Georgia (4,NR) (H) 67 52		
Jan. 11 Kentucky (4,20) (H) 66 63		
Jan. 16 Mississippi State (4,NR) (A) 51 45		
Jan. 19 South Carolina (4,NR) (H) 65 61		

Jan. 22 Ole Miss (4,NR) (ot) (A) 77 79
Jan. 25 Tennessee (7,11) (A) 76 105
Jan. 29 Mississippi State (7,NR) (H) 73 57
Feb. 2 Alabama (10,NR) (H) 77 63
Feb. 5 Arkansas (10,NR) (H) 73 55
Feb. 9 LSU (8,25) (A) 68 83
Feb. 16 Vanderbilt (11,24) (A) 86 80
Feb. 19 Ole Miss (11,NR) (H) 75 72
Feb. 22 Alabama (8,NR) (A) 64 68
Feb. 27 Florida (8,9) (A) 59 88
Mar. 1 LSU (13,12) (H) 53 55
Mar. 5 Arkansas (13,NR) (A) 55 64
Mar. 10 Florida (23,10) (N5) 78 70
Mar. 11 So. Carolina (23,NR) (ot) (N5) 77 72
Mar. 12 Arkansas (23,NR) (N5) 67 75
Mar. 16 Creighton (22,NR) (N6) 72 69
Mar. 18 Iowa State (22,6) (N6) 60 79
(N1) Wooden Classic, Arrowhead Pond, Anaheim, Calif.
(N2) Arby's Hardwood Classic, BJCC, Birmingham, Ala.
(N3) Coors Classic, Mitchell Center, Mobile, Ala.
(N4) San Juan Shootout, Morales Coliseum, San Juan, P.R.
(N5) SEC Tournament, Georgia Dome, Atlanta, Ga.
(N6) NCAA Tourney 1st/2nd Rounds, Minneapolis, MN

**2000 Final Rankings**

Associated Press	USA Today/ESPN
1. Duke	1. Michigan State
2. Michigan State	2. Florida
3. Stanford	3. Iowa State
4. Arizona	4. Duke
5. Temple	5. Stanford
6. Iowa State	6. Oklahoma State
7. Cincinnati	7. Cincinnati
8. Ohio State	8. Arizona
9. St. John's	9. Tulsa
10. LSU	10. Temple
24. Auburn	

2000-01 Won 18, Lost 14 (7-9 SEC)  
 COACH: Cliff Ellis  
 CAPTAINS: Scott Pohlman, Reggie Sharp

	AU	Opp.
Nov. 17 Florida A&M (H) 87 52		
Nov. 19 Jacksonville State (H) 91 51		
Nov. 20 Robert (H) 88 92		
Nov. 24 Mercer Morris (N1) 89 71		
Nov. 25 Toledo (2ot) (N1) 90 95		
Nov. 26 Providence (N1) 80 69		
Dec. 1 South Alabama (H) 66 68		
Dec. 4 Louisiana-Lafayette (H) 93 86		
Dec. 5 Grambling (H) 104 60		
Dec. 9 Detroit (N2) 75 72		
Dec. 16 Oregon (ot) (N3) 101 97		
Dec. 19 Georgia Southern (H) 93 79		
Dec. 30 Southern Miss (H) 73 69		
Jan. 6 Tennessee (NR,5) (2ot) (H) 88 96		
Jan. 10 Georgia (ot) (A) 80 85		
Jan. 13 LSU (H) 85 69		
Jan. 17 Arkansas (A) 72 82		
Jan. 20 South Carolina (A) 60 57		
Jan. 24 Florida (NR,14) (H) 63 65		
Jan. 27 Alabama (NR,15) (A) 80 81		
Jan. 31 Mississippi State (H) 60 56		
Feb. 3 Ole Miss (H) 70 74		
Feb. 10 LSU (A) 76 65		
Feb. 14 Arkansas (H) 71 63		
Feb. 17 Mississippi State (A) 74 85		
Feb. 21 Alabama (NR,14) (ot) (H) 72 69		
Feb. 24 Ole Miss (NR,12) (A) 62 64		
Feb. 28 Kentucky (NR,15) (A) 78 90		
Mar. 3 Vanderbilt (H) 69 66		
Mar. 8 Tennessee (NR,24) (N4) 66 73		
Mar. 14 Miami, Fla. (NIT) (H) 60 58		
Mar. 20 Purdue (NIT) (A) 61 79		
(N1) Energia Systems Thanksgiving Tour., Kansas City, Mo.		
(N2) Arby's Hardwood Classic, BJCC, Birmingham, Ala.		
(N3) Las Vegas Showdown, Las Vegas, Nev.		
(N4) SEC Tourney, Gaylord Enter. Center, Nashville, TN		

2001-02 Won 12, Lost 16 (4-12 SEC)  
 COACH: Cliff Ellis  
 CAPTAINS: Marquis Daniels, Adam Harrington

	AU	Opp.
Nov. 16 High Point (H) 63 59		

Nov. 18 Jacksonville State (H) 75 53
Nov. 24 Rutgers (A) 56 57
Nov. 27 McNeese State (H) 78 74
Nov. 30 Florida International (H) 67 55
Dec. 4 Louisiana Tech (H) 66 67
Dec. 8 Virginia (NR,7) (N1) 72 77
Dec. 15 Marshall (N2) 78 60
Dec. 18 South Alabama (H) 73 58
Dec. 20 UNC-Asheville (H) 83 38
Dec. 29 Southern Miss (H) 64 55
Jan. 5 Arkansas (H) 77 83
Jan. 9 Ole Miss (A) 65 69
Jan. 12 Alabama (NR,14) (H) 59 56
Jan. 16 Vanderbilt (A) 67 73
Jan. 19 LSU (A) 58 75
Jan. 22 Kentucky (NR,8) (H) 62 69
Jan. 27 Tennessee (A) 59 82
Jan. 30 Mississippi State (H) 64 72
Feb. 2 Arkansas (A) 60 62
Feb. 9 Georgia (NR,17) (H) 75 72
Feb. 13 Ole Miss (H) 65 62
Feb. 16 Mississippi State (A) 53 89
Feb. 20 Florida (NR,8) (A) 61 89
Feb. 23 South Carolina (H) 50 46
Feb. 27 Alabama (NR,6) (A) 68 73
Mar. 2 LSU (H) 54 59
Mar. 7 Florida (NR,11) (N3) 63 81
(N1) Arby's Hardwood Classic, Birmingham, Ala.
(N2) Coors Classic, Mobile, Ala.
(N3) SEC Tournament, Georgia Dome, Atlanta, Ga.

2002-03 Won 22, Lost 16 (8-8 SEC)  
 COACH: Cliff Ellis  
 CAPTAINS: Marquis Daniels, Derrick Bird

	AU	Opp.
Nov. 22 Wofford (H) 81 63		
Nov. 26 Georgia State (H) 100 71		
Dec. 1 Western Kentucky (N1) 70 89		
Dec. 2 Southeastern Louisiana (H) 77 47		
Dec. 4 South Carolina State (H) 85 65		
Dec. 8 Rutgers (H) 82 70		
Dec. 14 Murray State (H) 72 53		
Dec. 17 Western Michigan (H) 54 72		
Dec. 20 Puerto Rico-Mayaguez (A2) 94 64		
Dec. 21 Denver (N2) 63 58		
Dec. 22 Troy State (N2) 94 66		
Dec. 30 Southern Miss (H) 92 46		
Jan. 2 North Texas (H) 90 65		
Jan. 8 Vanderbilt (H) 62 59		
Jan. 11 Arkansas (A) 52 37		
Jan. 15 South Carolina (A) 67 60		
Jan. 18 Alabama (NR,9) (H) 77 68		
Jan. 22 Kentucky (24,8) (A) 51 67		
Jan. 25 Georgia (24,19) (A) 79 85		
Feb. 1 Tennessee (H) 57 60		
Feb. 5 Ole Miss (H) 77 71		
Feb. 8 LSU (H) 56 54		
Feb. 15 Alabama (A) 68 84		
Feb. 19 Mississippi State (NR,19) (H) 46 63		
Feb. 22 Ole Miss (A) 80 75		
Feb. 26 LSU (A) 63 94		
Mar. 1 Florida (NR,4) (H) 70 73		
Mar. 5 Arkansas (H) 69 54		
Mar. 8 Mississippi State (NR,21) (A) 45 67		
Mar. 14 Tennessee (N3) 66 53		
Mar. 15 Kentucky (NR,2) (N3) 58 78		
Mar. 21 Saint Joseph's (ot) (N4) 65 63		
Mar. 23 Wake Forest (NR,8) (N4) 68 62		
Mar. 28 Syracuse (NR,12) (N5) 78 79		
(N1) Nashville, Tenn., Gaylord Entertainment Center		
(A2, N2) San Juan Shootout, Caguas, P.R.		
(N3) SEC Tournament, Superdome, New Orleans, La.		
(N4) NCAA Tournament 1st/2nd Rounds, Tampa, Fla.		
(N5) NCAA Tournament Sweet 16, Albany, N.Y.		

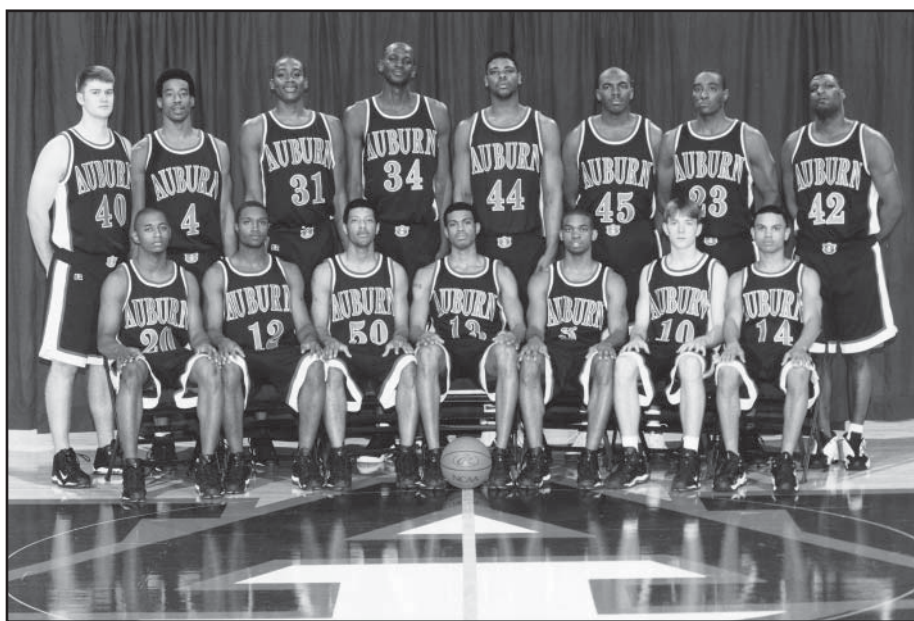
2003-04 Won 14, Lost 14 (5-11 SEC)  
 COACH: Cliff Ellis  
 CAPTAIN: Kyle Davis

	AU	Opp.
Nov. 17 College of Charleston (H1) 66 62		
Nov. 21 Western Kentucky (H) 86 64		
Nov. 23 Maryland-Eastern Shore (H) 85 61		
Nov. 29 Grambling State (N1) 105 56		
Dec. 1 Colorado State (H) 84 54		

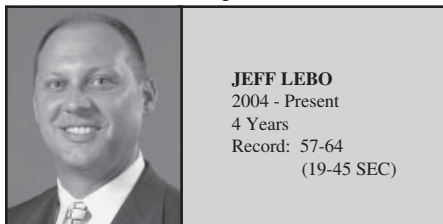


Dec. 7	Air Force	(H)	68	49
Dec. 10	Montana	(H)	73	51
Dec. 20	UNLV	(A1)	69	82
Dec. 22	Georgia State	(H)	72	77
Dec. 30	Southern Miss	(H)	78	60
Jan. 2	New Orleans	(H)	70	55
Jan. 7	Vanderbilt (NR,20)	(A)	53	59
Jan. 10	Ole Miss	(H)	80	53
Jan. 14	South Carolina (ot)	(H)	51	53
Jan. 17	Alabama	(A)	46	69
Jan. 21	Arkansas	(H)	70	63
Jan. 24	Florida (NR,17)	(A)	52	68
Jan. 31	Mississippi State (NR,11)	(H)	68	73
Feb. 4	Arkansas	(A)	52	74
Feb. 7	Georgia	(H)	57	54
Feb. 14	Ole Miss	(A)	68	72
Feb. 18	LSU (NR,24)	(A)	80	68
Feb. 21	Kentucky (NR,9)	(H)	59	68
Feb. 24	Alabama	(H)	71	72
Feb. 28	Tennessee	(A)	69	75
Mar. 2	Mississippi State (NR,5)	(A)	91	105
Mar. 6	LSU	(H)	78	66
Mar. 11	Georgia	(N2)	59	73

(H1) NABC Classic, Auburn, Ala.  
(N1) Hunstville, Ala.  
(A1) Las Vegas Showdown, Las Vegas, Nev.  
(N2) SEC Tournament, Georgia Dome, Atlanta, Ga.



**1999 SEC Champions, NCAA Tournament Sweet 16**  
(Sitting L-R): Corey Watkins, Jay Heard, Doc Robinson, Bryant Smith, Reggie Sharp, Scott Pohlman, Charlton Barker. (Standing): Abe Smith, Chris Porter, Mack McGadney, Mamadou N'diaye, David Hamilton, Adrian Person, Daymeon Fishback, Adrian Chilliest.



**JEFF LEBO**  
2004 - Present  
4 Years  
Record: 57-64  
(19-45 SEC)

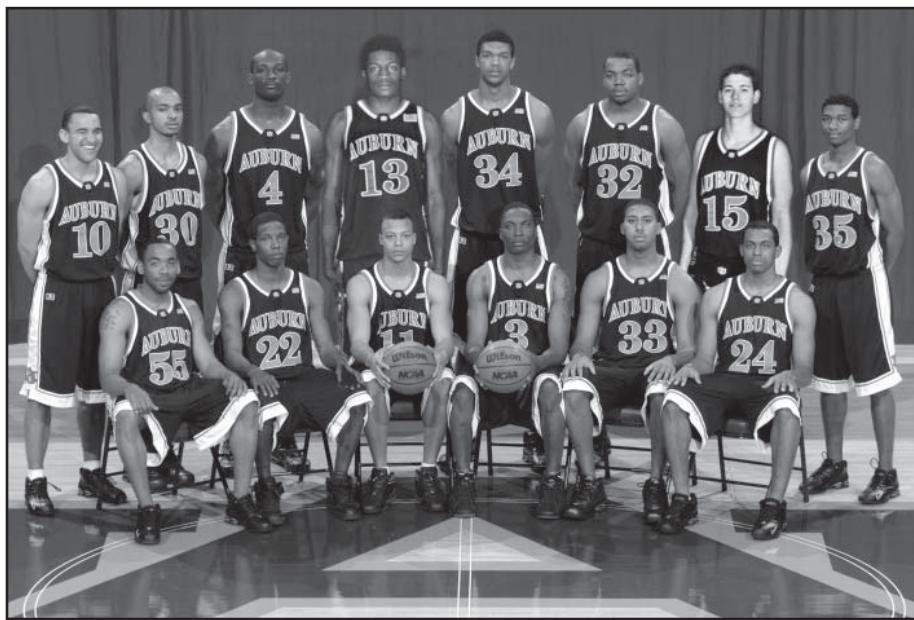
2004-05 Won 14, Lost 17 (4-12 SEC)  
COACH: Jeff Lebo  
CAPTAINS: Nathan Watson, Ian Young, Quinell Brown

		AU	Opp.
Nov. 19	Temple	(A)	80 78
Nov. 22	Furman	(H)	85 74
Nov. 24	Nicholls State	(H)	92 78
Nov. 27	Louisiana Tech	(H)	79 67
Nov. 30	Colorado State (ot)	(H)	79 76
Dec. 3	Virginia (NR,24)	(N1)	87 89
Dec. 5	Wofford	(H)	78 85
Dec. 7	College of Charleston	(A)	76 61
Dec. 12	UNLV (ot)	(H)	87 91
Dec. 20	Delaware	(N2)	74 46
Dec. 21	Middle Tennessee State	(N2)	79 74
Dec. 22	Toledo	(N2)	65 68
Dec. 30	Belmont	(H)	73 69
Jan. 5	Mississippi State (NR,18)	(A)	53 90
Jan. 12	Florida (ot)	(H)	78 84
Jan. 15	Ole Miss	(H)	72 79
Jan. 22	Arkansas	(A)	59 95
Jan. 26	Alabama (NR,14)	(H)	55 60
Jan. 29	Tennessee	(H)	62 59
Feb. 2	Ole Miss	(A)	55 70
Feb. 5	Mississippi State	(H)	90 76
Feb. 9	LSU	(A)	69 90
Feb. 12	South Carolina	(A)	74 71
Feb. 16	Vanderbilt	(H)	43 67
Feb. 19	Georgia	(A)	45 57
Feb. 23	Kentucky (NR,5)	(A)	73 81
Feb. 26	LSU	(H)	64 77
Mar. 2	Alabama (NR,19)	(A)	53 94
Mar. 5	Arkansas	(H)	77 64
Mar. 10	Vanderbilt	(N3)	77 73
Mar. 11	LSU	(N3)	58 89

(N1) Richmond, Va. (Siegel Center)  
(N2) San Juan Shootout (Carolina, P.R.)  
(N3) SEC Tournament, Georgia Dome, Atlanta, Ga.

2005-06 Won 12, Lost 16 (4-12 SEC)  
COACH: Jeff Lebo  
CAPTAINS: Ronny LeMelle, Frank Tolbert

		AU	Opp.
Nov. 20	Lipscomb	(H)	69 54
Nov. 25	Gardner-Webb	(H)	70 43



**2003 NCAA Tournament Sweet 16**  
(Sitting L-R): Chris Lollar, Lewis Monroe, Derrick Bird, Marquis Daniels, Donny Calton, Nathan Watson. (Standing): Troy Gaines, Jamaal Arnold, Marco Killingsworth, Brandon Robinson, Kyle Davis, Rodney Tucker, Danny Wicke, Jonathan Lewis.

Nov. 28	Colorado State	(A)	67 77
Dec. 1	McNeese State	(H)	91 76
Dec. 4	Pittsburgh	(A)	41 78
Dec. 14	Southeastern Louisiana	(H)	66 51
Dec. 18	Temple	(H)	73 42
Dec. 22	Texas A&M	(A)	67 72
Dec. 29	Winthrop	(H)	64 62
Dec. 31	Jacksonville State	(H)	87 83
Jan. 4	Southern Miss	(H)	80 57
Jan. 7	Vanderbilt	(A)	50 74
Jan. 11	Alabama	(H)	52 56
Jan. 14	Florida (NR,2)	(A)	57 69
Jan. 21	Arkansas	(H)	52 68
Jan. 24	Kentucky	(H)	62 71
Jan. 28	Georgia	(H)	66 65
Feb. 1	LSU (NR,24)	(A)	69 84
Feb. 4	Mississippi State	(A)	53 71
Feb. 8	Ole Miss	(H)	58 50
Feb. 11	Arkansas	(A)	64 84
Feb. 15	Tennessee (NR,8)	(A)	89 105
Feb. 18	LSU (NR,25)	(H)	61 65
Feb. 22	Mississippi State	(H)	75 71
Feb. 25	Ole Miss	(A)	58 54
Mar. 1	Alabama	(A)	61 71
Mar. 4	South Carolina	(H)	63 67
Mar. 9	Vanderbilt	(N1)	71 76

(N1) SEC Tournament (Nashville, TN, Gaylord Enter. Center)





2006-07 Won 17, Lost 15 (7-9 SEC)  
 COACH: Jeff Lebo  
 CAPTAINS: Quantez Robertson, Korvotney Barber,  
 Rasheem Barrett

		AU	Opp.
Nov. 10	Troy	(H) 71	68
Nov. 17	Winston-Salem State	(H) 95	62
Nov. 19	East Tennessee State	(H1) 64	58
Nov. 21	Miles College	(H1) 79	58
Nov. 24	Oklahoma State	(N2) 65	66
Nov. 25	Wisconsin (NR,7)	(N2) 63	77
Nov. 28	Nicholls State (ot)	(H) 92	87
Nov. 30	Louisiana-Monroe	(H) 81	60
Dec. 3	Pittsburgh (NR,2)	(H) 66	74
Dec. 6	South Alabama	(H) 82	71
Dec. 16	Wofford	(H) 86	76
Dec. 19	Tennessee State	(H) 86	59
Dec. 22	Texas A&M (NR,13)	(H) 58	87
Dec. 30	Charleston Southern	(H) 69	53
Jan. 2	Southern Miss	(A) 54	56
Jan. 6	Vanderbilt	(H) 68	65
Jan. 8	Kentucky	(A) 57	84
Jan. 13	LSU (NR,13)	(A) 63	65
Jan. 17	Tennessee (NR,22)	(H) 83	80
Jan. 20	Mississippi State	(A) 76	87
Jan. 23	Alabama (NR,12)	(H) 81	57
Jan. 27	Florida (NR,1)	(H) 66	91
Jan. 31	South Carolina	(A) 80	75
Feb. 3	Ole Miss	(H) 59	82
Feb. 7	Arkansas	(A) 57	65
Feb. 10	Mississippi State	(H) 83	91
Feb. 17	Georgia	(A) 79	86
Feb. 21	Arkansas	(H) 67	59
Feb. 24	Alabama (NR,25)	(A) 86	77
Feb. 28	LSU	(H) 80	68
Mar. 3	Ole Miss	(A) 79	83
Mar. 8	Georgia	(N3) 65	80

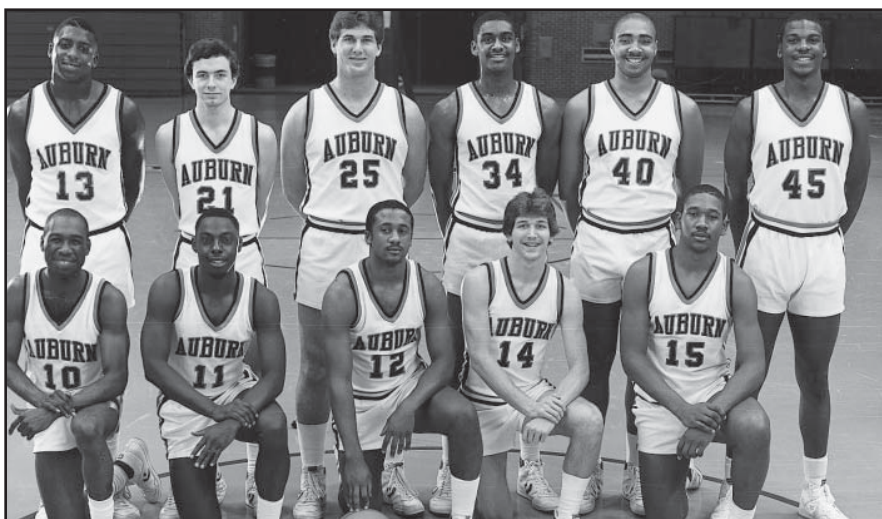
(H1) South Padre Inv. (Auburn, Ala.)  
 (N2) South Padre Inv. (South Padre Island, Texas)  
 (N3) SEC Tournament, Georgia Dome, Atlanta, Ga.

2007-08 Won 14, Lost 16 (4-12 SEC)  
 COACH: Jeff Lebo  
 CAPTAINS: Quantez Robertson, Korvotney Barber

		AU	Opp.
Nov. 9	Tulane	(A) 62	77
Nov. 13	Kennesaw State	(H) 74	62
Nov. 16	Alabama State	(A) 63	60
Nov. 19	Charleston Southern	(A1) 89	59
Dec. 2	George Washington	(N2) 74	70
Dec. 5	West Virginia	(N3) 59	88
Dec. 15	Southern	(N4) 71	63
Dec. 19	Mercer	(H) 68	59
Dec. 22	Alabama A&M	(H) 67	56
Dec. 29	Towson	(H) 79	59
Jan. 2	Texas A&M-C.C.	(H) 76	58
Jan. 6	Xavier	(H) 57	80
Jan. 10	Arkansas	(H) 70	76
Jan. 12	Florida	(A) 56	72
Jan. 16	LSU	(A) 74	67
Jan. 19	Ole Miss (NR,15)	(H) 80	77
Jan. 22	Presbyterian	(H) 78	65
Jan. 26	Alabama	(A) 77	97
Jan. 30	LSU	(H) 80	81
Feb. 2	Vanderbilt (NR,18)	(A) 71	78
Feb. 6	Kentucky	(H) 63	66
Feb. 9	Mississippi State	(H) 64	83
Feb. 16	Ole Miss	(A) 90	78
Feb. 20	Tennessee (NR,2)	(A) 70	89
Feb. 24	Alabama	(H) 88	76
Feb. 27	Mississippi State	(A) 78	89
Mar. 1	South Carolina	(H) 63	69
Mar. 5	Georgia	(H) 54	59
Mar. 8	Arkansas	(A) 64	77
Mar. 13	Vanderbilt (NR,17)	(N5) 82	93

(A1) North Charleston, SC (N. Charleston Coliseum)  
 (N2) BB&T Classic (Washington, DC, Verizon Center)  
 (N3) Big East/SEC Inv. (Birmingham, AL, BJCC Arena)  
 (N4) Coors Classic (Mobile, AL, Mitchell Center)  
 (N5) SEC Tournament (Atlanta, GA, Georgia Dome)

Numbers in parenthesis correspond to Auburn's national ranking first and opponent's national ranking heading into the game beginning with the 1950-51 season.



**1986 NCAA Elite Eight**

(L-R Kneeling): Terrance Howard, Melvin Harralson, Gerald White, Johnny Lynn, Frank Ford.  
 Standing: Mike Jones, Rob Jones, Gary Godfrey, Chris Morris, Jeff Moore, Chuck Person.



**1985 SEC Tournament Champions, NCAA Tournament Sweet 16**

(Sitting L-R): Terrance Howard, Rodney Turner, Gerald White, Johnny Lynn, Frank Ford, Gary Godfrey, Vern Strickland; (Middle Row): Rick Stukes (G.A.), Mack McCarthy (Asst. Coach), Sonny Smith (Head Coach), Lawrence Johnson (Asst. Coach), Tevester Anderson (Asst. Coach); (Back Row): Darren Guest, Carey Holland, Chris Morris, Jeff Moore, Chuck Person, Howard Spencer.

**1960 SEC Champions**

(Standing L-R): Bill Ross, Terry Hinote, David Vaughn, John Helmlinger, Leon Posey, Jorge Haeussler, Jimmy Fibbe, Porter Gilbert, Henry Hart (captain).

