



2014 AUBURN VOLLEYBALL MATCH NOTES

Auburn Athletics Communications | 392 South Donahue Drive | Auburn, AL 36849 | 334.844.9800

AuburnTigers.com | Facebook: Facebook.com/AuburnVB | Twitter: @AuburnVB

2014 SCHEDULE/RESULTS

Date	Opponent (AU/Opp Rank)	Time/Result
Aug. 29	+ vs. North Dakota	W, 3-1
Aug. 29	+ at George Washington	L, 0-3
Aug. 30	+ vs. Arkansas State	W, 3-0
Sept. 5	^ at Ohio State	L, 0-3
Sept. 5	^ vs. Southern Illinois	L, 0-3
Sept. 7	^ vs. Florida Gulf Coast	W, 3-1
Sept. 12	\$ TROY	W, 3-0
Sept. 13	\$ WINTHROP (SECN +)	W, 3-2
Sept. 13	\$ USF (SECN +)	L, 2-3
Sept. 16	vs. Florida State (--/6)	L, 2-3
Sept. 19	# FLORIDA A&M (SECN +)	W, 3-0
Sept. 20	# JACKSONVILLE STATE (SECN +)	W, 3-0
Sept. 20	# NORTHWESTERN STATE (SECN +)	W, 3-2
Sept. 26	* FLORIDA (SECN +) (--/10)	L, 3-0
Sept. 28	* at Texas A&M (SEC Network)(--/22)	L, 3-0
Oct. 1	* GEORGIA (ESPNU)	W, 3-1
Oct. 5	* SOUTH CAROLINA	L, 2-3
Oct. 10	* at Missouri	L, 0-3
Oct. 12	* at Kentucky (SEC Network)(--/13)	L, 0-3
Oct. 17	* OLE MISS (SECN +)	L, 1-3
Oct. 22	* ALABAMA (ESPNU)	L, 0-3
Oct. 31	* at Mississippi State (SEC Network)	W, 3-1
Nov. 2	* at Georgia	L, 2-3
Nov. 7	* ARKANSAS (SECN +)	L, 0-3
Nov. 9	* TENNESSEE (SECN +)	W, 3-1
Nov. 12	* at Florida (SEC Network)(--/7)	L, 0-3
Nov. 16	* at South Carolina	W, 3-2
Nov. 21	* at Alabama(--/RV)	L, 1-3
Nov. 23	* at LSU	L, 0-3
Nov. 26	* KENTUCKY (--/15)	L, 1-3
Nov. 29	* MISSISSIPPI STATE (SECN +)	12 p.m.

* SEC Match

+ GW Invitational (Washington D.C.) • 9th Annual Sports Imports D.C. Koehl Classic (Columbus, Ohio) • \$ Active Ankle Challenge (Auburn, Ala.) • # War Eagle Invitational (Auburn, Ala.)

All Times Central and subject to change
HOME MATCHES at Auburn Arena

GAMEDAY INFORMATION

GAME RESET

Date: Saturday, Nov. 29, 2014

Match Time: 12 p.m. CT

Location: Auburn, Ala.

Arena: Auburn Arena

TV: SEC Network +

PxP: Brit Bowen

Analyst: Kathia Rud

Series Record vs. Mississippi State

All-Time: Auburn leads, 34-20

Last Meeting: W, 3-1 in Starkville (2014)

Series in Auburn: Auburn leads, 20-6

Series in Starkville: Auburn leads, 14-11

Neutral: Auburn trails, 1-3

MULTIMEDIA

Live Stats: AuburnTigers.com

Live Video: WatchESPN.com

In-Match Updates: @AuburnVB

MATCH 31

AUBURN ARENA • AUBURN, ALA.



**AUBURN
Tigers**

ESSENTIALS

2014 Record: 12-18

SEC Record: 4-13

Head Coach: Rick Nold

AU: 59-61 (4th)

Overall: 231-159 (13th)

STATISTICAL LEADERS

Kills: Crable (2.80)

Assists: Filley (10.11)

Digs: Ivey (3.98)

Blocks: Barksdale (0.93)

Aces: Crable (0.27)



**MISSISSIPPI STATE
Bulldogs**

ESSENTIALS

2014 Record: 7-25

SEC Record: 2-15

Head Coach: Jenny Hazelwood

MSU: 48-106 (6th)

Overall: 136-329 (15th)

STATISTICAL LEADERS

Kills: Warren (2.78)

Assists: Anderton (6.28)

Digs: Harris (7.11)

Blocks: Lefall-Young (0.81)

Aces: Harris (0.26)

#STATCHECK

50

Courtney Crable needs just 50 more attacks to break the Auburn single-season record

100

Breanna Barksdale has 100 total blocks this year, the third-most in Auburn single-season history

1,132

Filley's 1,132 assists are the most by an Auburn setter since 25-point rally scoring came into effect in 2008. Her total ranks eighth all-time in single-season history

QUICK HITTERS

- Auburn takes on Mississippi State in its final home match of the 2014 season on Saturday at Auburn Arena.
- The Tigers defeated the Bulldogs, 3-1, in their previous meeting this year back on Oct. 31 in Starkville.
- Auburn has won four-straight meetings against Mississippi State; the Tigers are 20-6 at home all-time against the Bulldogs.
- Alexa Filley broke the Auburn single-season assists record versus South Carolina; the freshman now has 1,132 assists this season.
- Filley has recorded seven double-doubles in Auburn's last nine matches; her 11 in league play lead the SEC and her 17 this year are second-most in the conference.
- Breanna Barksdale's 100 total blocks rank as the third-most by an Auburn player in single-season history.
- Alyssa Ivey has 418 digs this season, the most on the team and the fifth-most by a Tiger in a single-season. Her 3.98 digs per set is the sixth-best average in the SEC this year.
- Courtney Crable's 313 kills in 2014 are already the eighth-most by an Auburn player since 25-point rally scoring began in 2008. The freshman also ranks third in the Auburn record book with 1,041 attack this year, needing just 50 more take over the top spot.
- Auburn's five-set victory over South Carolina marked the Tigers' 150th all-time SEC win.
- The Tigers set an attendance record (2,474) against Arkansas at Auburn Arena on Nov. 7.
- Auburn has an all-time record of 587-589-4 (.499) in its 43rd season of intercollegiate volleyball.

AUBURN PROBABLE STARTERS (BASED OFF PREVIOUS MATCH)



STEPHANIE CAMPBELL
6-2 • MB • SO



EMILY KLITZKE
6-2 • OH • SO



COURTNEY CRABLE
6-1 • OH • FR



BREANNA BARKSDALE
6-1 • MB • SO



MACY REECE
6-2 • OH • FR



ALEXA FILLEY
5-9 • SET • FR



ALYSSA IVEY
5-8 • LIB • JR

K/S:	2.56	K/S:	2.41	K/S:	2.81	K/S:	1.63	K/S:	2.64	K/S:	0.72	K/S:	0.02
HIT %:	.267	HIT %:	.191	HIT %:	.128	HIT %:	.241	HIT %:	.184	A/S:	9.99	A/S:	0.85
D/S:	0.67	D/S:	0.28	D/S:	1.51	D/S:	0.21	D/S:	0.41	D/S:	2.86	D/S:	3.96
B/S:	0.73	B/S:	0.72	B/S:	0.30	B/S:	0.94	B/S:	0.41	B/S:	0.42	B/S:	0.00

K/S designates kills per set • HIT % designates hitting percentage • D/S designates digs per set • B/S designates blocks per set • A/S designates assists per set

2014 QUICK FACTS

GENERAL INFORMATION

Location Auburn, Ala.
 Founded.....Oct. 1, 1856
 Enrollment.....25,134
 Nickname.....Tigers
 School Colors.....Burnt Orange (PMS 172)
and Navy Blue (PMS 289)
 Home Court..... Auburn Arena (9,121)
 Affiliation.....NCAA Division I
 Conference.....Southeastern (West)
 President..... Dr. Jay Gogue
 Director of Athletics Jay Jacobs
 Senior Associate AD/SWA..... Meredith Jenkins
 Sport Administrator David Mines

TEAM INFORMATION

2013 Overall Record19-11 (.633)
 SEC Record 10-8 (.556)
 Regular Season Finish T-6th
 Postseason..... N/A
 Home Record.....8-5 (.615)
 Away Record7-6 (.538)
 Neutral Record4-0 (1.000)
 Letterwinners/Squad Members Returning/Lost..... 5/7
 Starters Returning/Lost..... 2/4+Liberio
 Newcomers7

COACHING & SUPPORT STAFF

Head CoachRick Nold
 Alma Mater..... Louisville, 1998
 Career Division I Record231-159 (.592) / 13th year
 Record at Auburn.....59-61 (.492) / 4th year
 Assistant CoachEysha Ambler (4th year)
 Alma Mater..... Jacksonville State, 2001
 Assistant Coach Chuck Crawford (1st year)
 Alma Mater..... Miami (Ohio), 2001
 Director of Volleyball OperationsApril Zech (7th year)
 Alma Mater..... Drexel, 1998
 Athletics TrainerAndi Ostrowski
 Student ManagerJay Mattison

TEAM HISTORY

First Year of Volleyball 1967; reinstated 1986
 All-Time Overall Record 587-589-4 (.499)
 All-Time SEC Record 150-284 (.346)
 All-Time Home Record 187-164 (.533)
 at Auburn Arena 13-10 (.565)
 NCAA Tournament Appearances / Last1 / 2010
 All-Time NCAA Tournament Record 1-1
 Last NCAA Opponent/Result..... 2010 Second Round
 at Nebraska (L 0-3)
 SEC Championships.....1
 Last..... Co-West Champions in 1996

ATHLETICS COMMUNICATIONS

Associate AD/Communications Kirk Sampson
 Asst. Director/Volleyball Contact..... Tyler Pigg
 E-mail..... tep0003@auburn.edu
 Office Phone334.844.9593
 Cell Phone334.750.0791
 Media Relations Fax334.844.9807
 Overnight Address.....392 S. Donahue Dr.
 Auburn, AL 36831
 Website..... AuburnTigers.com
 Facebook..... /AuburnVB
 Twitter @AuburnVB
 Instagram @auburnvolleyball

LAST TIME OUT

- Auburn fell 3-1 to No. 15 Kentucky, 3-1 (14-25, 25-20, 22-25, 23-25) Wednesday at Auburn Arena.
- Four Tigers recorded double-figure kills in the match as Breanna Barksdale finished with a season-high 13 kills.
- Stephanie Campbell led the Tigers with five blocks and also tied for the team-high with 13 kills. Macy Reece (12) and Courtney Crable (11) also finished with double-digit kills in the match.
- Just by grabbing a set from the Wildcats, it marked the first time the Tigers had taken a game from Kentucky in Auburn since 2011.

SCOUTING MISSISSIPPI STATE

- Mississippi State (7-25, 2-15 SEC) heads to Auburn to wrap-up the 2014 season after falling to Texas A&M, 3-0, on Wednesday.
- SEC All-Freshman team member Payton Harris leads the club and conference with 715 digs/6.11 per set. Harris also average 0.26 service aces per set to lead the Bulldogs.
- Alex Warren averages 2.78 kills per set and has 303 kills this season to lead Mississippi State.
- Bali Lefall-Young's 0.81 blocks per set ranks as the most on the team by a Bulldog this year.
- The Bulldogs are 0-10 on the road this season.

A WIN OVER MISSISSIPPI STATE WOULD...

- Give Auburn its fifth SEC win of the season.
- Extend the Tigers' winning streak to five straight against the Bulldogs.
- Mark Auburn's eighth home win this season.

LAST TIME: AUBURN 3, MISSISSIPPI STATE 1 (OCT. 31, 2014)

- Auburn hit .315 and topped Mississippi State, 3-1 (25-21, 25-16, 18-25, 25-23), in Starkville.
- The win marked Auburn's four-straight win over Mississippi State and ninth in the last 11 meetings.
- Courtney Crable posted a career-high 16 kills, while Emily Klitzke recorded 15.

MAKING HISTORY

- Freshman Alexa Filley became the first Auburn setter to post over 1,000 assists since 25-point rally scoring went into effect in 2008 and now holds the school record with 1,132 assists.
- She is now one of eight Auburn players to ever record over 1,000 assists in a single year and the first since 2006. She is just the second freshman in program history to accomplish that feat.
- If the season ended today, Filley's assists per set this year would go down as the best 10.11 average in a single-season since 2008.

PLAYER TO WATCH: ALYSSA IVEY, JR., L

> Ivey has recorded double-figure digs in 19 matches this season. The setter-turned-libero ranks sixth in the SEC with 3.96 digs per set. Her 400 digs in 2014 are the eighth-most in Auburn single-season history.



CRABLE DOES IT ALL

- Courtney Crable never comes off the court and she has made her presence known for the Tigers during her first year on the Plains.
- Crable's 314 kills leads the team through 30 matches this season and her 2.80 kills per set is the best average on the club.
- The freshman's 1,041 attacks this year already rank as the second-most by an Auburn player in a single-season; she needs just 50 more to break the record.
- At the service line, Crable has a team-high 30 aces and ranks sixth in the league with 0.29 service aces per set.

ON THE FLOOR

- Courtney Crable and Alexa Filley have played every set (112) and started each match for the Tigers this season.
- The freshman duo is trying to become the first pair of newcomers under head coach Rick Nold to start every match and play every set at Auburn during their first season on the Plains.
- Stephanie Campbell started all 30 matches and played in every set a year ago for the Tigers as a freshman.

DOUBLE-DOUBLE MACHINE

- Alexa Filley leads Auburn with 17 double-doubles this season, including seven in her last nine matches with double-digit assists and digs.
- Filley's total is the most amongst SEC freshman this season and her 11 double-doubles in conference play leads the league.
- Filley's 17 double-doubles this season ranks second in the league behind Missouri's Karly Can.

GET OFF MY BLOCK

- Auburn finished with 16 blocks in its win over Tennessee on Nov. 9, the most in a SEC match this season.
- Breanna Barksdale and Stephanie Campbell both tied their career-highs with eight stuffs in the win, while Emily Klitzke added in six for the Tigers.
- Barksdale's 98 total blocks this season are already the third-most by a Tiger in single-season history.

2014 ROSTER

No.	Name	Cl.	Pos.	Ht.	Hometown/Previous School
2	Taylor Schill	So.	L/DS	5-6	Arlington Heights, Ill./John Hersey HS
4	Mary Hannah Arrington	Jr.	DS/OH	5-9	Marietta, Ga./Pope HS
5	Emily Klitzke	So.	MB	6-2	Shawano, Wis./Shawano HS
7	Courtney Crable	Fr.	OH	6-1	Louisville, Ky./Mercy Academy
10	Kelly Stewart	Fr.	L/DS	5-6	Tomball, Texas/St. Pius X HS
11	Breanna Barksdale	So.	MB	6-1	San Diego, Calif./Cincinnati
15	Kristel Moor	RS-Fr.	MB	6-2	Tallinn, Estonia/Audentese Spordigumnaasium
16	Tate Pember	Fr.	L/DS	5-5	Kennesaw, Ga./North Cobb HS
18	Alyssa Ivey	Jr.	S/L	5-8	Franklin, Tenn./Middle Tennessee
21	Alexa Filley	Fr.	S	5-9	Louisville, Ky./Assumption HS
32	Stephanie Campbell	So.	MB	6-2	Wildwood, Mo./Lafayette HS
33	Macy Reece	Fr.	OH/MB	6-2	Hendersonville, Tenn./Goodpasture Christian

COACHING STAFF

- Head Coach:** Rick Nold (Fourth year at Auburn/13th year as a head coach)
Assistant Coach: Eysha Ambler (Fourth year at Auburn)
Assistant Coach: Chuck Crawford (First year at Auburn)
Volunteer Assistant Coach: Stephanie Klefot (First year at Auburn)
Director of Operations: April Zech (Seventh year at Auburn)
Athletics Trainer: Andi Ostrowski

PRONUNCIATION GUIDE

Eysha Ambler - AY-sha
 Kristel - Crystal

2014 SEC STANDINGS

(Thru Matches of 11/27)

Florida#	SEC Matches			All Matches		
	W	L	Pct.	W	L	Pct.
Florida#	18	0	1.000	24	3	.889
Kentucky	14	3	.824	25	5	.833
LSU	13	4	.765	18	8	.692
Alabama	12	5	.706	24	7	.774
Texas A&M	12	5	.706	20	8	.714
Arkansas	9	8	.529	15	15	.500
Ole Miss	8	9	.471	22	9	.710
South Carolina	7	10	.412	17	13	.567
Missouri	7	11	.389	16	17	.485
Georgia	5	13	.278	13	17	.433
Auburn	4	13	.235	12	18	.400
Mississippi State	2	15	.118	7	25	.219
Tennessee	1	16	.059	8	23	.258

- Clinched SEC Championship

THIS WEEK IN THE SEC

Wednesday, November 26

Arkansas 3, Tennessee 1
 Kentucky 3, Auburn 1
 Ole Miss 3, Georgia 0
 Florida 3, South Carolina 0
 Alabama 3, Missouri 2

Friday, November 28

Kennesaw State at Georgia* 5 p.m.
 Texas A&M at Ole Miss*+ 5 p.m.

Saturday, November 29

Tennessee at Alabama* 12 p.m.
 Mississippi State at Auburn*+ 1 p.m.
 LSU at South Carolina* 1:30 p.m.
 Florida at Texas 3 p.m.
 Arkansas at Kentucky*+ 7 p.m.

* - SEC match

% - ESPN

- SEC Network

+ - SEC Network+

All Times Eastern

AVCA PRESEASON TOP 25 POLL

(Nov. 24, 2014)

No.	Team	Rec.	Pts.	Last
1	Stanford (60)	1500	28-0	1
2	Wisconsin	1412	26-2	2
3	Texas	1371	22-1	3
4	Penn State	1324	28-3	4
5	Washington	1237	27-2	5
6	Florida	1201	23-3	6
7	North Carolina	1160	24-2	7
8	Florida State	1069	26-2	8
9	Colorado State	1020	28-2	9
10	Nebraska	926	20-7	11
11	Illinois	916	22-7	10
12	BYU	793	24-4	12
13	Oregon	780	21-7	14
14	Arizona	757	22-8	13
15	Kentucky	641	24-5	15
16	Long Beach State	534	24-4	18
17	UCLA	520	19-10	17
18	Colorado	473	18-12	19
19	Purdue	401	22-8	16
20	Ohio State	357	19-11	20
21	Duke	283	21-6	21
22	Arizona State	245	18-12	22
23	Utah	189	17-12	23
24	Western Kentucky	95	30-5	NR
25	Hawai'i	76	19-6	NR

Others receiving votes and listed on two or more ballots:

Oregon State 66; Kansas State 40; Kansas 32; Oklahoma 15; Creighton 10; **Alabama 8**; Southern California 7; Loyola Marymount 6; Ohio 6; Seton Hall 5; Arkansas-Little Rock 4

Dropped Out: Southern California (25); Ohio (24)

INSIDE THE SERIES

MISSISSIPPI STATE (35-20)

Year	Result	Score	Site
2014	W	3-1	Starkville, Miss.
2013	W	3-0	Auburn, Ala.
2012	W	3-0	Auburn, Ala.
2012	W	3-0	Starkville, Miss.
2011	L	0-3	Auburn, Ala.
2011	L	2-3	Starkville, Miss.
2010	W	3-1	Starkville, Miss.
2010	W	3-0	Auburn, Ala.
2009	W	3-0	Auburn, Ala.
2009	W	3-0	Starkville, Miss.
2008	W	3-0	Auburn, Ala.
2008	L	2-3	Starkville, Miss.
2007	L	0-3	Auburn, Ala.
2007	L	2-3	Starkville, Miss.
2006	W	3-2	Auburn, Ala.

* - last 15 meetings

in Auburn: Auburn leads, 20-6
in Starkville: Auburn leads, 14-11
Neutral: Mississippi State leads, 3-1
Nold vs. Mississippi State: 4-2

IVEY EXCELS AS DEFENSIVE STALWART

- Junior setter-turned-libero Alyssa Ivey has been the anchor for Auburn's back row since grabbing the jersey against FGCU on Sept. 7.
- Ivey leads the club and ranks sixth in the SEC with 3.98 digs per set.
- The junior has logged a team-high 418 digs this season, the fifth-most in single-season history.
- Ivey's 25 digs against South Carolina were the most by the junior against an SEC foe this year.
- Against Northwestern State, Ivey picked up a career-best 28 in Auburn's 3-2 win on Sept. 20. The junior's 28 digs in a single match were tied for the fourth-most ever by a Tiger libero.

BLOCKING BREANNA

- Breanna Barksdale leads the club with 100 total blocks this season, including a team-high 87 block assists. Her 100 total blocks are the third-most in Auburn single-season history.
- Barksdale's 0.93 blocks per set rank as the 15th-best ratio in the SEC this season.
- The sophomore's block-per-set ratio would be the fourth-best average by an Auburn player in single-season history.

FILLING UP THE SEATS

- On Nov. 7, Auburn set its attendance record with a crowd of 2,474 when the Tigers hosted Arkansas.
- The Tigers have continued their run of drawing strong crowds at Auburn Arena since moving to the facility in 2013.
- Against Alabama on Oct. 22, the Tigers saw their third-best crowd of 1,101 fans file into Auburn Arena. It also marked the seventh-best attendance in program history.

Date	Opponent	Attendance	Result
11/7/14	Arkansas[^]	2,474	L, 0-3
10/2/13	Alabama [^]	1,810	L, 1-3
9/26/14	Florida[^]	1,383	L, 0-3
9/25/09	LSU	1,215	L, 0-3
9/22/06	Alabama*	1,211	W, 3-0
11/4/05	Georgia	1,200	L, 1-3
9/23/12	Alabama	1,146	W, 3-1
10/22/14	Alabama[^]	1,101	L, 0-3
9/23/11	Alabama	1,037	W, 3-0
8/29/08	Samford	974	L, 0-3

* - at Beard-Eaves Coliseum | ^ - at Auburn Arena

LIVING UP TO THE HYPE

- It's very uncommon that you see a freshman setter get the keys to the offense once they hit campus, but that's exactly the opportunity Alexa Filley was given when she arrived at Auburn.
- Filley's 1,132 assists already rank as the most in a single season in Auburn 25-point rally scoring history and is a freshman record.
- The freshman's 324 digs this season are the second-most on the team.

WEEKLY MEDIA PLANNER

Most practices are open to the media.

For help covering Auburn volleyball, contact Tyler Pigg (tep0003@auburn.edu).

TUESDAY

November 25

PRACTICE

Auburn Arena
11:30 a.m.
Auburn, Ala.

Interviews by request

WEDNESDAY

November 26

GAME

vs. Kentucky
Auburn Arena
5 p.m. CT

Interviews Postgame

THURSDAY

November 27

OFF DAY

NO INTERVIEWS

FRIDAY

November 28

PRACTICE

Auburn Arena
12:30 p.m.
Auburn, Ala.

Interviews by request

SATURDAY

November 29

GAME

vs. Mississippi State
Auburn Arena
12 p.m. CT

Interviews Postgame

FILLEY GRABS TOURNAMENT MVP HONORS

- Freshman setter Alexa Filley earned tournament MVP at the War Eagle Invitational, posting 111 assists, 14 kills and pair of double-doubles.
- Filley collected 52 assists in Auburn's five-set victory over Northwestern State, marking the third time this year the freshman eclipsed the 50-assist mark.
- She was joined all the all-tournament team by Stephanie Campbell and Macy Reece.

LIGHTS, CAMERA, ACTION

- Alexa Filley experienced a once-in-a-lifetime opportunity by attending the 2014 ESPYS in Los Angeles as a nominee for the Gatorade Female High School Athlete of the Year.
- Filley led Assumption High to four straight Kentucky state titles and was the MVP in the state tournament in 2012 and 2013.
- The freshman also picked up a selection to the Under Armour All-America second team, as well as being named the Kentucky Gatorade Athlete of the Year.
- Filley recorded 1,239 assists, 332 digs and 54 blocks during her senior year.

PUT YOUR HANDS UP

- Auburn set a single-match record with 18 blocks against USF on Sept. 13 at the Active Ankle Challenge.
- Macy Reece leads the club with 14 solo blocks this season, six of which came in Auburn's three matches at the War Eagle Invitational.

NOLD MOVING UP THE CHARTS

- Head coach Rick Nold moved into fourth place all-time at Auburn with his 55th win on the Plains in the Tigers' 3-2 win over Northwestern State.

Coach	Tenure	Coaching Record	Winning Pct.
Sandra Newkirk	1967-1979	134-107-4	.556
Pat Ghastin	1986-90	105-77	.577
Liz Underwood	1992-97	99-77	.577
Rick Nold	2011-present	59-61	.492

TIGERS PICKED NINTH IN SEC PRESEASON POLL

- Auburn was selected to finish ninth in the SEC Preseason Coaches' Poll, the league office announced back on Aug.12
- The Tigers finished tied for sixth with Texas A&M during the 2013 season.
- Florida earned 12 of 13 first-place votes in the poll and was selected to win the league by SEC's coaches.

#STATCHECK: DISHING OUT THE ASSISTS

Alexa Filley's 1,132 assists through 30 matches leads the club and is already the best total in single-season history at Auburn since 25-point rally scoring began in 2008. The freshman's 10.11 assists-per-set ratio ranks as the seventh-best average in the SEC this season.

1. ALEXA FILLEY • 2014 • 1,132 ASSISTS
2. SARA SHANKS • 2008 • 995 ASSISTS
3. CHELSEA WINTZINGER • 2011 • 791 ASSISTS
4. CHRISTINA SOLVERSON • 2010 • 740 ASSISTS
5. CHELSEA WINTZINGER • 2012 • 680 ASSISTS
6. CHELSEA WINTZINGER • 2013 • 642 ASSISTS
7. CHRISTINA SOLVERSON • 2009 • 609 ASSISTS
8. SARA SHANKS • 2009 • 559 ASSISTS
9. CIARA RICHARDS • 2012 • 541 ASSISTS
10. CHELSEA WINTZINGER • 2010 • 514 ASSISTS



RICK NOLD

Auburn: 59-61 (4th)
Overall: 231-159 (13th)



PERSONAL

Hometown:
Louisville, Ky.
Education:
Louisville, 1998

COACHING EXPERIENCE

- Falls Cities Volleyball Club (1989-92)
 - Louisville, Ky.
- Assumption High School Head Coach (1992-95)
 - Louisville, Ky.
- USA Volleyball (Intern) (1995)
- Kentucky-Indiana Volleyball Academy (1995-02)
 - Louisville, Ky.
- Louisville Assistant Coach (1998-01)
 - Louisville, Ky.
- Jacksonville State Head Coach (2002-10)
 - Jacksonville, Ala.
- Auburn Head Coach (2011-)
 - Auburn, Ala.

Rick Nold is in his fourth season as Auburn's head volleyball coach in 2014 after being named the 10th head coach in program history on April 10, 2011.

In his three-plus seasons on the Plains, Nold has put together a 59-61 overall record (.492). The Tigers finished 19-11 during the 2013 season, tying for sixth in the SEC with a 10-8 conference record. The 10 victories in SEC play were the most by the Tigers since 2011 and just the second time in the last 15 years that Auburn posted 10 wins in league action. Nold also guided the Tigers to its second-ever win over a top-10 opponent, knocking off No. 10 Nebraska on the road, 3-1.

Nold is just the second Auburn coach in program history to have a record over .500 after his first three seasons since 1986. During his 12 years as a head coach, he has amassed 10 winning seasons.

His second season saw a six-match improvement from his first as he took the Tigers from an 11-19 mark (5-15 SEC) in 2011 to a 17-13 record (8-12 SEC) in 2012, the 18th winning season in 41 years of Auburn volleyball. He led the Tigers to nine straight wins to open the season, the second-longest winning streak in program history. Nold also picked up his 200th career head coaching victory on Nov. 4 with a 3-1 win over Georgia.

The 2012 season also saw senior outside hitter Sarah Bullock become the fifth player in Auburn history to record 1,000 career kills and 1,000 career digs. Bullock and junior Camila Jersonsky were named to the All-SEC Second Team following the season, and Jersonsky was a two-time selection as the SEC Defensive Player of the Week.

Nold, 44, came to Auburn after directing Jacksonville State to unprecedented heights during his nine-year tenure, winning three regular season conference titles, three conference tournament titles and making three NCAA postseason appearances. He compiled an overall record of 172-98, while posting an impressive 107-42 (72 percent) mark in league games.

A three-time conference Coach of the Year, Nold led the Gamecocks to Ohio Valley Conference regular season or tournament title in four of the previous six seasons. He captured the OVC regular season crown in 2006, '07 and '09, while winning the conference tournament title in 2005, '06 and '09.

Jacksonville State advanced to the NCAA Division I Tournament in 2005, '06 and '09 under Nold, the only NCAA postseason appearances in the program's history. In 2009, Nold led the program to another milestone, by winning the school's first NCAA Tournament match, defeating Florida A&M.

Nold's 2009 team finished the season 27-8, which was the most wins in program history, swept both conference titles and advanced to the NCAA second round. He was rewarded by being named the OVC Coach of the Year as well as the Midwest Region Coach of the Year by the American Volleyball Coaches Association.

In 2006, the Gamecocks were 24-5 overall and posted a perfect 18-0 mark in conference play, sweeping all but one conference match. At one time that season, JSU won 49 consecutive games, the longest active streak in the nation.

Nold came to Jacksonville State from his alma mater, where he spent six years on the Cardinals' staff, the last four as a full-time assistant whose duties included recruiting coordinator. During his time at Louisville, the Cardinals won four Conference USA titles and advanced to the NCAA Tournament five times, advancing to the Sweet 16 in 1996 and 1998.

INSIDE THE NUMBERS



CATEGORY	AU	MSU
Record	12-18	7-25
Kills	1430	1238
Per Set	12.8	10.6
Errors	683	635
Total Attacks	3972	4163
Hitting Pct.	.188	.145
Assists	1349	1154
Per Set	12.0	9.9
Service Aces	105	114
Per Set	0.9	1.0
Service Errors	240	125
Reception Errors	117	188
Per Set	1.0	1.6
Digs	1650	1869
Per Set	14.7	16.0
Solo Blocks	66	65
Block Assists	320	300
Total Blocks	226.0	215.0
Per Set	2.0	1.8

RPI REPORT

TEAM	RPI	AU RESULT
Florida State	3	L, 2-3
Florida	7	L, 0-3; L, 0-3
Kentucky	15	L, 0-3; L, 1-3
Texas A&M	19	L, 0-3
Alabama	27	L, 0-3; L, 1-3
Ohio State	29	L, 0-3
LSU	38	L, 0-3
George Washington	60	L, 0-3
Ole Miss	63	L, 1-3
Arkansas	79	L, 0-3
FGCU	84	W, 3-1
Auburn	102	--
South Carolina	105	L, 2-3; W, 3-2
Missouri	106	L, 0-3
North Dakota	122	W, 3-1
Georgia	123	W, 3-1; L, 2-3
Southern Illinois	132	L, 0-3
USF	158	L, 2-3
Winthrop	159	W, 3-2
Florida A&M	194	W, 3-0
Tennessee	214	W, 3-1
Mississippi State	230	W, 3-1
Northwestern State	226	W, 3-2
Troy	243	W, 3-0
Jacksonville State	245	W, 3-0

#2 TAYLOR SCHILL

SEASON/CAREER HIGHS
 Kills.....
 Attempts.....2.....at SIUE, 9/1/13
 Assists.....3.....5x, last vs. Tennessee, 11/9/14
 Digs.....22.....vs. Northwestern State, 9/20/14
 Blocks.....
 Aces.....2.....at George Washington, 8/29/14

#4 MARY HANNAH ARRINGTON

SEASON HIGHS
 Kills.....2.....vs. Ole Miss, 10/17/14
 Attempts.....14.....vs. Ole Miss, 10/17/14
 Assists.....3.....vs. North Dakota, 8/29/14
 Digs.....25.....vs. North Dakota, 8/29/14
 Blocks.....1.....vs. Ole Miss, 10/17/14
 Aces.....1.....7x, last at South Carolina, 11/16/14

CAREER HIGHS
 Kills.....6.....at Texas A&M, 9/6/12
 Attempts.....28.....at Texas A&M, 9/6/12
 Assists.....3.....vs. North Dakota, 8/29/14
 Digs.....25.....vs. North Dakota, 8/29/14
 Blocks.....1.....vs. Ole Miss, 10/17/14
 Aces.....2.....twice, last at SIUE, 9/1/13

#5 EMILY KLITZKE

SEASON HIGHS
 Kills.....18.....vs. South Carolina, 10/5/14
 Attempts.....33.....vs. South Carolina, 10/5/14
 Assists.....1.....4x, last at South Carolina, 11/16/14
 Digs.....4.....twice, last vs. Troy, 9/12/14
 Blocks.....6.....vs. FGCU, 9/7/14
 Aces.....

CAREER HIGHS
 Kills.....18.....vs. South Carolina, 10/5/14
 Attempts.....33.....vs. South Carolina, 10/5/14
 Assists.....1.....vs. Jacksonville State, 9/20/14
 Digs.....5.....vs. Missouri, 11/8/13
 Blocks.....6.....twice, last vs. Tennessee, 11/9/14
 Aces.....

#7 COURTNEY CRABLE

SEASON/CAREER HIGHS
 Kills.....20.....at South Carolina, 11/16/14
 Attempts.....56.....vs. Winthrop, 9/13/14
 Assists.....4.....vs. South Carolina, 10/5/14
 Digs.....19.....vs. Northwestern State, 9/20/14
 Blocks.....4.....twice, last vs. Georgia, 10/1/14
 Aces.....4.....twice, last vs. Georgia, 10/1/14

#10 KELLY STEWART

SEASON/CAREER HIGHS
 Kills.....1.....twice, last at Mississippi State, 10/31/14
 Attempts.....2.....at Kentucky, 10/12/14
 Assists.....6.....vs. Georgia, 10/1/14
 Digs.....19.....vs. Georgia, 10/1/14
 Blocks.....
 Aces.....2.....twice last at Alabama, 11/21/14

#11 BREANNA BARKSDALE

SEASON/CAREER HIGHS
 Kills.....13.....vs. Kentucky, 11/26/14
 Attempts.....27.....vs. Northwestern State, 9/20/14
 Assists.....2.....at Georgia, 11/2/14
 Digs.....3.....vs. Tennessee, 11/9/14
 Blocks.....8.....3x, last vs. Tennessee, 11/9/14
 Aces.....1.....at Florida, 11/12/14

#15 KRISTEL MOOR

SEASON/CAREER HIGHS
 Kills.....14.....vs. South Carolina, 10/5/14
 Attempts.....25.....vs. South Carolina, 10/5/14
 Assists.....1.....vs. Ole Miss, 10/17/14
 Digs.....2.....vs. South Carolina, 10/5/14
 Blocks.....4.....at Florida State, 9/16/14
 Aces.....

#16 TATE PEMBER

SEASON/CAREER HIGHS
 Kills.....
 Attempts.....
 Assists.....1.....vs. Kentucky, 11/26/14
 Digs.....7.....vs. Kentucky, 11/26/14
 Blocks.....
 Aces.....

#18 ALYSSA IVEY

SEASON HIGHS
 Kills.....1.....twice last at South Carolina, 11/16/14
 Attempts.....1.....3x, last at South Carolina, 11/16/14
 Assists.....8.....vs. Winthrop, 9/13/14
 Digs.....28.....vs. Northwestern State, 9/20/14
 Blocks.....
 Aces.....2.....vs. Winthrop, 9/13/14

CAREER HIGHS
 Kills.....2.....vs. LSU, 10/18/13
 Attempts.....3.....at Missouri, 10/4/13
 Assists.....26.....vs. Nebraska, 8/31/13
 Digs.....28.....vs. Northwestern State, 9/20/14
 Blocks.....
 Aces.....2.....twice, last vs. Winthrop, 9/13/14

#21 ALEXA FILLEY

SEASON/CAREER HIGHS
 Kills.....6.....vs. Jacksonville State, 9/20/14
 Attempts.....21.....vs. Northwestern State, 9/20/14
 Assists.....63.....vs. South Carolina, 10/5/14
 Digs.....20.....vs. Winthrop, 9/13/14
 Blocks.....5.....vs. South Carolina, 10/5/14
 Aces.....2.....5x, last at South Carolina, 11/16/14

#32 STEPHANIE CAMPBELL

SEASON HIGHS
 Kills.....18.....twice, last at Georgia, 11/2/14
 Attempts.....45.....vs. Northwestern State, 9/20/14
 Assists.....2.....3x, last at Georgia, 11/2/14
 Digs.....6.....vs. Tennessee, 11/9/14
 Blocks.....8.....vs. Tennessee, 11/9/14
 Aces.....3.....at Alabama, 11/21/14

CAREER HIGHS
 Kills.....18.....vs. Winthrop, 9/13/14
 Attempts.....45.....vs. Northwestern State, 9/20/14
 Assists.....2.....twice, last at Florida State, 9/16/13
 Digs.....11.....vs. Green Bay, 9/6/13
 Blocks.....8.....twice, last vs. Tennessee, 11/9/14
 Aces.....3.....3x, last at Alabama, 11/21/14

#33 MACY REECE

SEASON/CAREER HIGHS
 Kills.....25.....vs. USF, 9/13/14
 Attempts.....48.....vs. USF, 9/13/14
 Assists.....1.....3x, last at Mississippi State, 10/31/14
 Digs.....3.....5x, last at South Carolina, 11/16/14
 Blocks.....4.....twice, last vs. Tennessee, 11/9/14
 Aces.....1.....twice, last vs. USF, 9/13/14

THE LAST TIME AUBURN...

Won in three sets 9/20/14 vs. Jacksonville State (25-12, 25-10, 25-15)
 Won in four sets 11/9/14 vs. Tennessee (26-28, 25-14, 25-22, 25-15)
 Won in five sets 11/16/14 vs. South Carolina (21-25, 25-20, 25-21, 24-26, 15-9)
 Lost in three sets 11/23/14 at LSU (16-25, 22-25, 20-25)
 Lost in four sets 11/26/14 vs. #15 Kentucky (14-25, 25-20, 22-25, 23-25)
 Lost in five sets 11/2/14 at Georgia (24-26, 30-28, 19-25, 25-10, 13-15)
 Lost first set in a win 11/16/14 at South Carolina (21-25, 25-20, 25-21, 24-26, 15-9)
 Won first set in a loss 10/6/13 at Arkansas (25-21, 27-29, 12-25, 16-25)
 Lost first two sets in a win 11/19/10 at Alabama (21-25, 26-28, 25-19, 25-19, 16-14)
 Won first two sets in a loss 9/14/13 at Notre Dame (28-26, 25-17, 16-25, 16-25, 11-15)
 Beat a ranked opponent 8/31/13 vs. #10 Nebraska (25-23, 22-25, 25-23, 25-23)
 Hit .300-.399 in a match 11/2/14 at Georgia (.314)
 Hit .400-.499 in a match 9/6/13 vs. Mercer (.450)
 Hit .500 or better in a match 10/18/98 at Ole Miss (.514)
 Held opponent at .000-.100 in a match 11/9/14 vs. Tennessee (.098)
 Held opponent to negative hitting pct. 9/20/14 vs. Jacksonville State (-.037)
 Had 70-79 kills in a match 11/16/14 at South Carolina (75)
 Had 80+ kills in a match 9/17/06 at Georgia (84)
 Had 80-99 digs in a match 11/9/14 vs. Tennessee (81)
 Had 100+ digs in a match 9/20/14 vs. Northwestern State (107)
 Had 15+ blocks in a match 11/9/14 vs. Tennessee (16.0)
 Had 10+ service aces in a match 8/28/10 vs. Tennessee-Martin (11)
 Had a player(s) with 20-24 kills in a match 11/16/14, Courtney Crable at South Carolina (20)
 Had a player(s) with 25-29 kills in a match 9/13/14, Macy Reece vs. USF (25)
 Had a player(s) with 30+ kills in a match 10/8/04, Ashlee Johns vs. Arkansas (30)
 Had a player(s) with 10+ blocks in a match 9/15/06, Julie Bosler vs. South Carolina (10)
 Had a player(s) with 25-29 digs in a match 11/16/14, Alyssa Ivey at South Carolina (25)
 Had a player(s) with 30+ digs in a match 11/15/13, Sarah Wroblecky at LSU (33)
 Had a player(s) with 40+ assists in match 11/9/14, Alexa Filley vs. Tennessee (49)
 Had a player(s) with 50+ assists in a match 11/23/14, Alexa Filley vs. #15 Kentucky (53)
 Had a player(s) with 60+ assists in a match 10/5/14, Alexa Filley vs. South Carolina (63)
 Had a player(s) with 5+ aces in a match 11/22/13, Katherine Culwell vs. Tennessee (7)

AUBURN CAREER DOUBLE-DOUBLES

Player	Opponent	Date	Stats
Courtney Crable (3)	FGCU	9/7/14	10 kills, 10 digs
	Winthrop	9/13/14	14 kills, 12 digs
	Northwestern State	9/20/14	14 kills, 19 digs
Alexa Filley (17)	North Dakota	8/29/14	43 assists, 13 digs
	Arkansas State	8/30/14	34 assists, 10 digs
	Winthrop	9/13/14	55 assists, 20 digs
	USF	9/13/14	55 assists, 19 digs
	Florida A&M	9/19/14	31 assists, 15 digs
	Northwestern State	9/20/14	52 assists, 16 digs
	#10 Florida	9/26/14	29 assists, 11 digs
	Georgia	10/1/14	34 assists, 18 digs
	South Carolina	10/5/14	63 assists, 12 digs
	Ole Miss	10/17/14	45 assists, 11 digs
	Mississippi State	10/31/14	49 assists, 12 digs
	at Georgia	11/2/14	57 assists, 19 digs
	Arkansas	11/7/14	28 assists, 11 digs
	Tennessee	11/9/14	48 assists, 11 digs
at South Carolina	11/16/14	52 assists, 14 digs	
at LSU	11/23/14	36 assists, 10 digs	
#15 Kentucky	11/26/14	53 assists, 15 digs	
Alyssa Ivey (3)	Nebraska	8/31/13	26 assists, 14 digs
	LSU	10/18/13	19 assists, 10 digs
	LSU	11/15/13	25 assists, 13 digs

AUBURN'S RECORD WHEN...

Overall 12-18
 SEC 4-13
 Non-Conference 8-5
 vs. Ranked Teams 0-6
 Home 7-7
 Away 2-9
 Neutral 3-1

By Set:

Three Sets 4-11
 Four Sets 5-3
 Five Sets 2-4
 Won first set 9-0
 Lost first set 2-18
 Won second set 7-5
 Lost second set 4-13
 Won first two sets 5-0
 Lost first two sets 0-11

Situational:

More kills than opponent 12-4
 Fewer kills than opponent 0-14
 Kills are tied 0-0
 More digs than opponent 10-7
 Fewer digs than opponent 1-11
 Digs are tied 2-1
 More aces than opponent 7-4
 Fewer aces than opponent 4-14
 Aces are tied 1-0
 Higher hitting percentage than opponent 11-2
 Lower hitting percentage than opponent 1-16
 Tied in hitting percentage 0-0

Hitting percentage:

.400 or above 0-0
 .300-.399 2-1
 .200-.299 4-5
 .100-.199 6-7
 .000-.099 0-5
 Negative 0-0

Opponents' hitting percentage:

.400 or above 0-2
 .300-.399 0-6
 .200-.299 3-8
 .100-.199 4-1
 .000-.099 3-0
 Negative 2-0

By Day:

Tuesday 0-1
 Wednesday 1-3
 Friday 4-8
 Saturday 4-1
 Sunday 3-5
 Day Matches (first serve before 6 p.m.) 7-9
 Night Matches (first serve after 6 p.m.) 5-9

By Month:

August 2-1
 September 6-6
 October 2-5
 November 2-6

By Jersey Color:

White 6-3
 Blue 0-8
 Orange 6-7

AUBURN VOLLEYBALL CAREER RECORD BOOK

KILLS

1. Jaunelle Hamilton (1997-00).....	1848
2. Allyson Beecroft (1993-96).....	1727
3. Brooke McCarley (1997-00).....	1704
4. Gina Thomas (1988-92).....	1467
5. Rachel Shanks (2004-07).....	1319
6. Sarah Bullock (2009-12).....	1272
7. Bridgitte Sims (1989-91).....	1149
8. Jessica Glover (2005-08).....	1137
9. Rani Whitson (1993-96).....	1102
10. Whitney Jacob (2004-07).....	1093

KILLS PER SET (min. 500 kills)

1. Brooke McCarley (1997-00).....	4.40
2. Jaunelle Hamilton (1997-00).....	4.23
3. Allyson Beecroft (1993-96).....	4.00
4. Ashlee Johns (2003-04).....	3.82
5. Terri Duckworth (1987-88).....	3.63
6. Jennifer Amobi (2003-05).....	3.57
7. Rachel Shanks (2004-07).....	3.43
8. Bridgitte Sims (1989-91).....	3.40
9. Jessica Glover (2005-08).....	3.17
10. Sarah Bullock (2009-12).....	2.93

ATTACK PCT. (min. 1000 attacks)

1. Camila Jersonsky (2010-present).....	354
.....	881-234-1827
2. Jaunelle Hamilton (1997-00).....	344
.....	1848-532-3827
3. Brooke McCarley (1997-00).....	325
.....	1704-455-3847
4. Terri Duckworth (1987-99).....	315
.....	876-291-1860
5. Rani Whitson (1993-96).....	281
.....	1102-383-2562
6. Julie Bosler (2003-06).....	280
.....	558-178-1359
7. Gina Thomas (1988-92).....	279
.....	1467-540-3319
8. Stephanie Campbell (2013-present).....	275
.....	500-164-1223
9. Whitney Jacob (2004-07).....	264
.....	1093-428-2522
10. La'Toi Finley (1994-97).....	256
.....	727-306-1647

ATTACKS

1. Allyson Beecroft (1993-96).....	4349
2. Brooke McCarley (1997-00).....	3847
3. Jaunelle Hamilton (1997-00).....	3827
4. Sarah Bullock (2009-12).....	3774
5. Rachel Shanks (2004-07).....	3703
6. Gina Thomas (1988-92).....	3319
7. Jessica Glover (2005-08).....	3130
8. Jenifer Kleyn (1988-91).....	3107
9. Katherine Culwell (2009-2013).....	3092
10. Gretchen Thompson (1986-89).....	2913

ASSISTS

1. Piper Craig (1995-98).....	5053
2. Janel Newkirk (1989-92).....	4071
3. Mary Orndorff (1986-89).....	3242
4. Chelsea Wintzinger (2010-2013).....	2627
5. Tama English (1991-94).....	2535
6. Joanna Pappas (2005-06).....	2073

ASSISTS PER SET (min. 500 assists)

1. Piper Craig (1995-98).....	12.86
2. Traci Price (1999-00).....	11.77
3. Maira Mogollon (2003-04).....	11.38
4. Chris Murphy (1993-96).....	11.35
5. Joanna Pappas (2005-06).....	11.15

ACES

1. Jenifer Kleyn (1988-91).....	338
2. Lori Russell (1989-92).....	201
3. Gretchen Thompson (1986-89).....	164
4. Tory Gutierrez (1989-92).....	160
5. Terri Duckworth (1987-88).....	158
6. Jaunelle Hamilton (1997-00).....	148
7. Allyson Beecroft (1993-96).....	138
8. Whitney Jacob (2004-07).....	134
9. Janel Newkirk (1989-92).....	129
10. Bridgitte Sims (1989-91).....	126

ACES PER SET (min. 40 aces)

1. Jenifer Kleyn (1988-91).....	0.71
2. Terri Duckworth (1987-88).....	0.66
3. Lori Russell (1989-92).....	0.46
4. Jenny Fislser (1987-88).....	0.40
5. Bridgitte Sims (1989-91).....	0.37
6. Gretchen Thompson (1986-89).....	0.36
7. Maira Mogollon (2003-04).....	0.35
.....	Tory Gutierrez (1989-92)..... 0.35
9. Jaunelle Hamilton (1997-00).....	0.34
10. Allyson Beecroft (1993-96).....	0.32
.....	Jen Gracen (1999-00)..... 0.32

DIGS

1. Liz Crouch (2007-10).....	1703
2. Gretchen Thompson (1986-89).....	1495
3. Allyson Beecroft (1993-96).....	1249
4. Sarah Wroblicky (2010-2013).....	1226
5. Sarah Bullock (2009-12).....	1210
6. Rachel Shanks (2004-07).....	1185
7. Sarah Watson (1992-95).....	1036
8. Janel Newkirk (1989-92).....	1026
9. Jaunelle Hamilton (1997-00).....	1002
10. Bailey Veit (2002-05).....	1001

DIGS PER SET (min. 500 digs)

1. Liz Crouch (2007-10).....	4.00
2. Sarah Wroblicky (2010-2013).....	3.66
3. Gretchen Thompson (1986-89).....	3.26
4. Rachel Shanks (2004-07).....	3.08
5. Alyssa Ivey (2012-present).....	2.93
6. Allyson Beecroft (1993-96).....	2.89
7. Bailey Veit (2002-05).....	2.80
.....	Emily Suter (1995-98)..... 2.80
9. Sarah Bullock (2009-12).....	2.79
10. Sarah Watson (1992-95).....	2.70

SOLO BLOCKS

1. Gina Thomas (1988-92).....	159
2. Tory Gutierrez (1989-92).....	157
3. Jaunelle Hamilton (1997-00).....	106
4. Julie Bosler (2003-06).....	98
5. Rani Whitson (1993-96).....	61
6. Katherine Culwell (2009-2013).....	59
7. Mary Olks (1986-89).....	58
8. Whitney Jacob (2004-07).....	56
9. Sarah Bullock (2009-12).....	54
10. Camila Jersonsky (2010-2013).....	51

BLOCK ASSISTS

1. Jaunelle Hamilton (1997-00).....	465
2. Rani Whitson (1993-96).....	426
3. Gina Thomas (1988-92).....	360
4. Whitney Jacob (2004-07).....	351
5. Tory Gutierrez (1989-92).....	318
6. Camila Jersonsky (2010-2013).....	315
7. Julie Bosler (2003-06).....	265
8. La'Toi Finley (1994-97).....	261
.....	Krista Singleton (1994-97)..... 261
10. Lauren Mellor (2007-10).....	228

TOTAL BLOCKS

1. Jaunelle Hamilton (1997-00).....	571
2. Gina Thomas (1988-92).....	519
3. Rani Whitson (1993-96).....	487
4. Tory Gutierrez (1989-92).....	475
5. Whitney Jacob (2004-07).....	407
6. Camila Jersonsky (2010-2013).....	366
7. Julie Bosler (2003-06).....	363
8. La'Toi Finley (1994-97).....	289
9. Krista Singleton (1994-97).....	276
10. Laura Coakley (1990-93).....	257

BLOCKS PER SET (min. 100 blocks)

1. Jaunelle Hamilton (1997-00).....	1.31
2. Rani Whitson (1993-96).....	1.16
3. Julie Bosler (2003-06).....	1.06
4. Tory Gutierrez (1989-92).....	1.03
5. Gina Thomas (1988-92).....	0.98
6. Whitney Jacob (2004-07).....	0.96
7. Camila Jersonsky (2009-2013).....	0.93
8. Heather Franey (1995-96, 98).....	0.90
9. La'Toi Finley (1994-97).....	0.88
10. Bailey Veit (2002-05).....	0.80

AUBURN VOLLEYBALL SINGLE-SEASON INDIVIDUAL RECORDS (25-POINT RALLY SCORING ERA, 2008-present)

KILLS		ASSISTS PER SET (min. 200 assists)		SOLO BLOCKS	
1. Jessica Glover (2008)	410	1. Alexa Filley (2014)	10.11	1. Katherine Culwell (2012)	25
2. Sarah Bullock (2012)	371	2. Sara Shanks (2008)	8.43	2. Sarah Bullock (2012)	18
3. Sarah Bullock (2010)	354	3. Chelsea Wintzinger (2011)	7.39	Jessica Glover (2008)	18
4. Kelly Fidero (2011)	341	4. Chelsea Wintzinger (2012)	6.24	4. Kelly Fidero (2011)	17
5. Katherine Culwell (2012)	330	5. Chelsea Wintzinger (2013)	6.17	Sarah Bullock (2011)	17
6. Katherine Culwell (2013)	326	6. Christina Solverson (2010)	6.17	6. Katherine Culwell (2013)	16
7. Morgan Johns (2010)	325	7. Christina Solverson (2009)	5.48	Camila Jersonsky (2013)	16
8. Courtney Crable (2014)	314	8. Sara Shanks (2009)	5.13	8. Camila Jersonsky (2011)	15
9. Sarah Bullock (2009)	296	9. Ciara Richards (2012)	4.96	9. Macy Reece (2014)	14
10. Camila Jersonsky (2013)	289	10. Alyssa Ivey (2013)	4.85	10. Lauren Mellor (2010)	13
--. Stephanie Campbell (2014)	287			Breanna Barksdale (2014)	13
				Stephanie Campbell (2014)	13
KILLS PER SET (min. 100 kills)		ACES		BLOCK ASSISTS	
1. Sarah Bullock (2012)	3.50	1. Chelsea Wintzinger (2013)	35	1. Camila Jersonsky (2012)	108
2. Jessica Glover (2008)	3.45	2. Sara Shanks (2008)	30	2. Lauren Mellor (2009)	90
3. Kelly Fidero (2011)	3.22	Courtney Crable (2014)	30	3. Camila Jersonsky (2013)	89
4. Katherine Culwell (2013)	3.13	4. Ciara Richards (2012)	26	4. Breanna Barksdale (2014)	87
5. Katherine Culwell (2012)	3.03	5. Chelsea Wintzinger (2010)	25	5. Courtney McDonald (2012)	84
Sarah Bullock (2010)	3.03	6. Katherine Culwell (2009)	24	6. Chloe Rowand (2012)	67
7. Courtney Crable (2014)	2.80	7. Stephanie Campbell (2013)	21	7. Alyssa Davis (2009)	65
8. Camila Jersonsky (2013)	2.78	8. Sarah Bullock (2010)	21	8. Emily Klitzke (2014)	64
9. Morgan Johns (2010)	2.75	Liz Crouch (2010)	21	9. Camila Jersonsky (2010)	63
10. Macy Reece (2014)	2.65	Liz Crouch (2009)	21	Stephanie Campbell (2014)	63
				10. Lauren Mellor (2010)	62
ATTACK PCT. (min. 250 attacks)		ACES PER SET (min. 15 aces)		TOTAL BLOCKS	
1. Camila Jersonsky (2012)	356	1. Chelsea Wintzinger (2013)	0.34	1. Camila Jersonsky (2012)	119
Camila Jersonsky (2011)	356	2. Courtney Crable (2014)	0.27	2. Camila Jersonsky (2013)	105
3. Camila Jersonsky (2010)	354	3. Sara Shanks (2008)	0.25	3. Breanna Barksdale (2014)	100
4. Camila Jersonsky (2013)	351	4. Ciara Richards (2012)	0.24	4. Lauren Mellor (2009)	97
5. Alyssa Davis (2009)	316	5. Chelsea Wintzinger (2012)	0.21	5. Courtney McDonald (2012)	89
6. Morgan Johns (2010)	305	Lauren Mellor (2010)	0.21	6. Stephanie Campbell (2014)	81
7. Stephanie Campbell (2013)	281	Katherine Culwell (2009)	0.21	7. Katherine Culwell (2012)	78
8. Courtney McDonald (2012)	274	8. Stephanie Campbell (2013)	0.20	8. Emily Klitzke (2014)	77
9. Lauren Mellor (2009)	271	MacKenzy Harper (2011)	0.20	9. Lauren Mellor (2010)	75
10. Stephanie Campbell (2014)	268	10. Katherine Culwell (2013)	0.19	10. Stephanie Campbell (2014)	73
		Liz Crouch (2009)	0.19		
ATTACKS		DIGS		BLOCKS PER SET (min. 50 blocks)	
1. Sarah Bullock (2012)	1090	1. Sarah Wroblecky (2013)	481	1. Camila Jersonsky (2012)	1.09
2. Katherine Culwell (2012)	1033	2. Liz Crouch (2010)	469	2. Camila Jersonsky (2013)	1.01
3. Courtney Crable (2014)	1041	3. Liz Crouch (2009)	453	3. Chloe Rowand (2011)	0.97
4. Sarah Bullock (2010)	993	4. Sarah Wroblecky (2012)	431	4. Breanna Barksdale (2014)	0.93
5. Jessica Glover (2008)	988	5. Alyssa Ivey (2014)	418	Camila Jersonsky (2011)	0.89
6. Katherine Culwell (2013)	981	6. Liz Crouch (2008)	389	6. Lauren Mellor (2009)	0.88
7. Sarah Bullock (2009)	889	7. Sarah Bullock (2012)	351	7. Courtney McDonald (2012)	0.82
8. Kelly Fidero (2011)	867	8. Katherine Culwell (2013)	330	Lauren Mellor (2010)	0.82
9. Kathia Rud (2013)	802	9. Alexa Filley (2014)	324	9. Stephanie Campbell (2014)	0.75
Sarah Bullock (2011)	802	10. Sarah Bullock (2010)	306	10. Emily Klitzke (2014)	0.73
ASSISTS		DIGS PER SET (min. 100 digs)			
1. Alexa Filley (2014)	1132	1. Sarah Wroblecky (2013)	4.62		
2. Sara Shanks (2008)	995	2. Liz Crouch (2009)	4.08		
3. Chelsea Wintzinger (2011)	791	3. Liz Crouch (2010)	4.01		
4. Christina Solverson (2010)	740	4. Sarah Wroblecky (2012)	3.99		
5. Chelsea Wintzinger (2012)	680	5. Alyssa Ivey (2014)	3.98		
6. Chelsea Wintzinger (2013)	642	6. Liz Crouch (2008)	3.70		
7. Christina Solverson (2009)	608	7. Sarah Bullock (2012)	3.31		
8. Sara Shanks (2009)	559	8. Katherine Culwell (2013)	3.17		
9. Ciara Richards (2012)	541	9. Sarah Wroblecky (2011)	3.06		
10. Chelsea Wintzinger (2010)	514	10. Alexa Filley (2014)	2.89		

2014 AUBURN MATCH-BY-MATCH STARTERS

Date	Opponent	Result	Outside	Outside	Outside	Middle	Middle	Setter	Libero
8/29	North Dakota	W 3-1	Emily Klitzke	Courtney Crable	Kelly Stewart (DS)	Breanna Barksdale	Stephanie Campbell	Alexa Filley	Mary Hannah Arrington
8/29	at George Washington	L 3-0	Taylor Schill (DS)	Courtney Crable	Kelly Stewart (DS)	Breanna Barksdale	Stephanie Campbell	Alexa Filley	Mary Hannah Arrington
8/30	Arkansas State	W 3-0	Emily Klitzke	Courtney Crable	Macy Reece	Breanna Barksdale	Stephanie Campbell	Alexa Filley	Taylor Schill
9/5	at Ohio State	L 3-0	Emily Klitzke	Courtney Crable	M.H. Arrington (DS)	Breanna Barksdale	Stephanie Campbell	Alexa Filley	Taylor Schill
9/5	Southern Illinois	L 3-0	Emily Klitzke	Courtney Crable	Macy Reece	Breanna Barksdale	Stephanie Campbell	Alexa Filley	Mary Hannah Arrington
9/7	FGCU	W, 3-1	Emily Klitzke	Courtney Crable	Kristel Moor	Macy Reece	Stephanie Campbell	Alexa Filley	Alyssa Ivey
9/12	Troy	W, 3-0	Emily Klitzke	Courtney Crable	Macy Reece	Breanna Barksdale	Stephanie Campbell	Alexa Filley	Alyssa Ivey
9/13	Winthrop	W, 3-2	Emily Klitzke	Courtney Crable	M.H. Arrington (DS)	Breanna Barksdale	Stephanie Campbell	Alexa Filley	Alyssa Ivey
9/13	USF	L, 2-3	Taylor Schill (DS)	Courtney Crable	Macy Reece	Breanna Barksdale	Stephanie Campbell	Alexa Filley	Alyssa Ivey
9/16	at #6 Florida State	L, 2-3	Emily Klitzke	Courtney Crable	Macy Reece	Breanna Barksdale	Stephanie Campbell	Alexa Filley	Alyssa Ivey
9/19	Florida A&M	W, 3-0	Emily Klitzke	Courtney Crable	M.H. Arrington (DS)	Breanna Barksdale	Stephanie Campbell	Alexa Filley	Alyssa Ivey
9/20	Jacksonville State	W, 3-0	Emily Klitzke	Courtney Crable	M.H. Arrington (DS)	Breanna Barksdale	Stephanie Campbell	Alexa Filley	Alyssa Ivey
9/20	Northwestern State	W, 3-2	Emily Klitzke	Courtney Crable	Macy Reece	Breanna Barksdale	Stephanie Campbell	Alexa Filley	Alyssa Ivey
9/26	#10 Florida	L, 3-0	Emily Klitzke	Courtney Crable	Macy Reece	Breanna Barksdale	Stephanie Campbell	Alexa Filley	Alyssa Ivey
9/28	at #22 Texas A&M	L, 3-0	Emily Klitzke	Courtney Crable	Macy Reece	Breanna Barksdale	Stephanie Campbell	Alexa Filley	Alyssa Ivey
10/1	Georgia	W, 3-1	Emily Klitzke	Courtney Crable	M.H. Arrington (DS)	Breanna Barksdale	Stephanie Campbell	Alexa Filley	Alyssa Ivey
10/5	South Carolina	L, 2-3	Emily Klitzke	Courtney Crable	Kristel Moor	Breanna Barksdale	Stephanie Campbell	Alexa Filley	Alyssa Ivey
10/10	at Missouri	L, 0-3	Kelly Stewart (DS)	Courtney Crable	Kristel Moor	Breanna Barksdale	Stephanie Campbell	Alexa Filley	Alyssa Ivey
10/12	at #13 Kentucky	L, 0-3	Taylor Schill (DS)	Courtney Crable	M.H. Arrington (DS)	Breanna Barksdale	Stephanie Campbell	Alexa Filley	Alyssa Ivey
10/17	Ole Miss	L, 1-3	Taylor Schill (DS)	Courtney Crable	Kristel Moor	Breanna Barksdale	Stephanie Campbell	Alexa Filley	Alyssa Ivey
10/22	Alabama	L, 0-3	Emily Klitzke	Courtney Crable	M.H. Arrington (DS)	Breanna Barksdale	Stephanie Campbell	Alexa Filley	Alyssa Ivey
10/31	at Mississippi State	W, 3-1	Emily Klitzke	Courtney Crable	Macy Reece	Breanna Barksdale	Stephanie Campbell	Alexa Filley	Alyssa Ivey
11/2	at Georgia	L, 2-3	Emily Klitzke	Courtney Crable	Macy Reece	Breanna Barksdale	Stephanie Campbell	Alexa Filley	Alyssa Ivey
11/7	Arkansas	L, 0-3	Taylor Schill (DS)	Courtney Crable	Macy Reece	Breanna Barksdale	Stephanie Campbell	Alexa Filley	Alyssa Ivey
11/9	Tennessee	W, 3-1	Emily Klitzke	Courtney Crable	Kelly Stewart (DS)	Breanna Barksdale	Stephanie Campbell	Alexa Filley	Taylor Schill
11/12	at #7 Florida	L, 0-3	Emily Klitzke	Courtney Crable	Kelly Stewart (DS)	Breanna Barksdale	Stephanie Campbell	Alexa Filley	Alyssa Ivey
11/16	at South Carolina	W, 3-2	Emily Klitzke	Courtney Crable	Kelly Stewart (DS)	Breanna Barksdale	Stephanie Campbell	Alexa Filley	Alyssa Ivey
11/21	at Alabama	L, 1-3	Emily Klitzke	Courtney Crable	M.H. Arrington (DS)	Breanna Barksdale	Stephanie Campbell	Alexa Filley	Alyssa Ivey
11/23	at LSU	L, 0-3	Emily Klitzke	Courtney Crable	Tate Pember (DS)	Breanna Barksdale	Stephanie Campbell	Alexa Filley	Alyssa Ivey
11/26	Kentucky	L, 1-3	Emily Klitzke	Courtney Crable	Tate Pember (DS)	Breanna Barksdale	Stephanie Campbell	Alexa Filley	Alyssa Ivey
11/29	Mississippi State								

2014 AUBURN MATCH-BY-MATCH LEADERS

Date	Opponent	Result	Kills	Assists	Aces	Digs	Blocks	Hit Pct. (Min 10 Att.)
8/29	North Dakota	W 3-1	Crable (13)	Filley (43)	Campbell (2)	Arrington (25)	Barksdale (6)	Campbell (10-2-28-.286)
8/29	at George Washington	L 3-0	Moor (7)	Filley (28)	Schill (2)	Arrington (17)	Klitzke (2)	Moor (7-1-13-.462)
8/30	Arkansas State	W 3-0	Crable (13)	Filley (34)	Filley (2)	Schill (14)	Barksdale/Filley (3)	Campbell (8-0-17-.471)
9/5	at Ohio State	L, 3-0	Campbell (7)	Filley (20)	Arrington/Ivey (1)	Ivey (8)	Campbell (2)	Campbell (7-2-18-.278)
9/5	Southern Illinois	L, 3-0	Crable (15)	Filley (32)	Stewart (1)	Arrington (9)	Klitzke (4)	Reece (10-2-21-.381)
9/7	FGCU	W, 3-1	Campbell (13)	Filley (43)	Four players (1)	Ivey (22)	Barksdale/Klitzke (6)	Barksdale (10-2-21-.381)
9/12	Troy	W, 3-0	Reece (12)	Filley (32)	Crable/Ivey (1)	Ivey (17)	Barksdale (4)	Reece (12-1-23-.478)
9/13	Winthrop	W, 3-2	Campbell (18)	Filley (55)	Crable (4)	Filley (20)	Campbell (5)	Campbell (18-5-41-.317)
9/13	USF	L, 2-3	Reece (25)	Filley (55)	Crable (2)	Ivey/Filley (19)	Barksdale (8)	Barksdale (9-1-17-.471)
9/16	at #6 Florida State	L, 2-3	Campbell/Crable (13)	Filley (41)	Crable (1)	Ivey (17)	Barksdale (5)	Moor (7-2-22-.227)
9/19	Florida A&M	W, 3-0	Klitzke (12)	Filley (31)	Campbell/Filley (2)	Ivey (17)	Campbell/Klitzke (3)	Campbell (11-3-18-.444)
9/20	Jacksonville State	W, 3-0	Barksdale (8)	Filley (28)	Crable (3)	Ivey (10)	Stephanie Campbell (7)	Barksdale (8-0-11-.727)
9/20	Northwestern State	W, 3-2	Reece (15)	Filley (52)	Campbell (2)	Ivey (28)	Barksdale/Klitzke (3)	Reece (15-5-43-.233)
9/26	#10 Florida	L, 3-0	Crable (9)	Filley (29)	Crable (2)	Ivey (18)	Campbell (2)	Barksdale (7-1-20-.300)
9/28	at #22 Texas A&M	L, 3-0	Klitzke (7)	Filley (22)	Campbell/Stewart (1)	Filley (8)	Crable (2)	Barksdale (5-2-12-.250)
10/1	Georgia	W, 3-1	Crable (11)	Filley (34)	Crable (4)	Stewart (19)	Barksdale (8)	Filley (5-0-10-.500)
10/5	South Carolina	L, 2-3	Klitzke (18)	Filley (63)	Crable (2)	Ivey (13)	Filley (5)	Moor (14-4-25-.400)
10/10	at Missouri	L, 0-3	Crable (11)	Filley (31)	Arrington/Stewart (1)	Ivey (11)	Barksdale/Filley (3)	Klitzke (8-2-14-.429)
10/12	at #13 Kentucky	L, 0-3	Campbell/Klitzke (7)	Filley (23)	None	Ivey (9)	Klitzke (3)	Klitzke (7-6-17-.059)
10/17	Ole Miss	L, 1-3	Campbell/Crable (15)	Filley (45)	Campbell/Schill (1)	Ivey (17)	Barksdale (8)	Campbell (15-3-26-.462)
10/22	Alabama	L, 0-3	Campbell (10)	Filley (25)	None	Ivey (17)	Barksdale/Klitzke/Moor (1)	Campbell (10-3-15-.467)
10/31	at Mississippi State	W, 3-1	Crable (16)	Filley (49)	Campbell/Crable/Filley (1)	Ivey (17)	Campbell (5)	Campbell (10-0-17-.588)
11/2	at Georgia	L, 2-3	Reece (21)	Filley (57)	Crable/Schill (1)	Ivey (21)	Campbell (6)	Campbell (18-2-31-.516)
11/7	Arkansas	L, 0-3	Klitzke/Reece (9)	Filley (28)	Four players (1)	Filley (11)	Barksdale (3)	Reece (9-2-27-.259)
11/9	Tennessee	W, 3-1	Campbell/Klitzke (14)	Filley (48)	Arrington/Stewart (2)	Ivey/Schill (18)	Barksdale/Campbell (8)	Barksdale (6-0-15-.400)
11/12	at #7 Florida	L, 0-3	Crable (6)	Filley (13)	Barksdale (1)	Filley (5)	Four players (1)	Barksdale (5-2-15-.200)
11/16	at South Carolina	W, 3-0	Crable (20)	Filley (52)	Filley (2)	Ivey (25)	Barksdale (5)	Klitzke (16-3-29-.448)
11/21	at Alabama	L, 1-3	Campbell (12)	Filley (30)	Campbell (3)	Ivey (5)	Barksdale (6)	Campbell (12-1-25-.440)
11/23	at LSU	L, 0-3	Campbell (1)	Filley (36)	Campbell/Stewart (1)	Ivey (17)	Barksdale/Campbell/Klitzke (2)	Campbell (10-3-29-.241)
11/26	#15 Kentucky	L, 1-3	Barksdale/Campbell (13)	Filley (53)	Campbell/Pember (1)	Ivey (18)	Campbell (5)	Reece (12-2-22-.455)
11/29	Mississippi State							

2014 AUBURN INDIVIDUAL MATCH HIGHS (BY SET)

Three Sets

Hitting percentage.....727, Breanna Barksdale vs. Jacksonville State (9/20/14)
 Kills 15, Courtney Crable vs. Southern Illinois (8/30/14)
 Total Attempts35, Courtney Crable vs. Florida A&M (9/19/14)
 Assists 34, Alexa Filley vs. Arkansas State (8/30/14)
 Digs..... 17, three times, last Alyssa Ivey vs. Alabama (10/22/14)
 Aces 2, Taylor Schill at George Washington (8/29/14)
 Blocks.....7, Stephanie Campbell vs. Florida A&M (9/19/14)

Four Sets

Hitting percentage..... 588, Stephanie Campbell at Mississippi State(10/31/14)
 Kills 16, Courtney Crable at Mississippi State (10/31/14)
 Total Attempts51, Courtney Crable vs. Ole Miss (10/17/14)
 Assists 53, Alexa Filley vs. Kentucky (11/26/14)
 Digs..... 25, Mary Hannah Arrington vs. North Dakota (8/29/14)
 Aces 4, Courtney Crable vs. Georgia (10/1/14)
 Blocks..... 8, three times, Breanna Barksdale vs. Georgia (10/1/14), Breanna Barksdale and Stephanie Campbell vs. Tennessee (11/9/14)

Five Sets

Hitting percentage.....516, Stephanie Campbell at Georgia (11/2/14)
 Kills 25, Macy Reece vs. USF (9/13/14)
 Total Attempts 56, Courtney Crable vs. Winthrop (9/13/14)
 Assists63, Alexa Filley vs. South Carolina (10/5/14)
 Digs.....28, Alyssa Ivey vs. Northwestern State (9/20/14)
 Aces 4, Courtney Crable, vs. Winthrop (9/13/14)
 Blocks..... 8, Breanna Barksdale vs. USF (9/13/14)

2014 AUBURN TEAM MATCH HIGHS (BY SET)

Three Sets

Hitting percentage.....341 vs. Jacksonville State (9/20/14)
 Kills45, last vs. Florida A&M (9/19/14)
 Total Attempts 121 vs. Florida A&M (9/19/14)
 Assists 50 vs. Troy (9/12/14)
 Digs.....65 vs. Arkansas State (8/30/14)
 Aces 8, vs. Florida A&M (9/19/14)
 Blocks..... 14.0 vs. Jacksonville State (9/20/14)

Four Sets

Hitting percentage..... .315 at Mississippi State (10/31/14)
 Kills63, at Mississippi State (10/31/14)
 Total Attempts165 vs. North Dakota (8/29/14)
 Assists58, twice, at Mississippi State (10/31/14) and vs. Tennessee (11/9/14)
 Digs.....81 vs. Tennessee (11/9/14)
 Aces9 at Alabama (11/21/14)
 Blocks..... 16.0 vs. Tennessee (11/9/14)

Five Sets

Hitting percentage..... .314 at Georgia (11/2/14)
 Kills75, twice, at Georgia (11/2/14) and at South Carolina (11/16/14)
 Total Attempts210 vs. Northwestern State (9/20/14)
 Assists74 vs. South Carolina (10/5/14)
 Digs..... 107 vs. Northwestern State (9/20/14)
 Aces9 vs. Winthrop (9/13/14)
 Blocks..... 18.0, vs. USF (9/13/14)



**2014 Auburn Volleyball
Auburn Combined Team Statistics (as of Nov 26, 2014)
All matches**



RECORD:	OVERALL	HOME	AWAY	NEUTRAL
ALL GAMES	12-18	7-7	2-10	3-1
CONFERENCE	4-13	2-6	2-7	0-0
NON-CONFERENCE	8-5	5-1	0-3	3-1

#	Player	sp	Attack					Set		Serve			Dig			Blocking					points	
			k	k/s	e	ta	pct	a	a/s	sa	se	sa/s	re	dig	dig/s	bs	ba	total	blk/s	be		bhe
10	Stewart, Kelly	89	2	0.02	0	5	.400	24	0.27	10	27	0.11	13	144	1.62	0	0	0	0.00	2	1	12.0
18	Ivey, Alyssa	105	2	0.02	1	3	.333	90	0.86	10	20	0.10	23	418	3.98	0	0	0	0.00	0	3	12.0
32	Campbell, Stephanie	111	287	2.59	101	691	.269	7	0.06	17	30	0.15	0	74	0.67	13	70	83	0.75	19	0	352.0
11	Barksdale, Breanna	108	183	1.69	69	462	.247	4	0.04	1	2	0.01	2	22	0.20	13	87	100	0.93	26	0	240.5
33	Reece, Macy	92	244	2.65	116	664	.193	4	0.04	2	1	0.02	1	38	0.41	14	23	37	0.40	9	1	271.5
5	Klitzke, Emily	108	260	2.41	135	649	.193	4	0.04	0	0	0.00	1	30	0.28	9	70	79	0.73	5	2	304.0
21	Filley, Alexa	112	81	0.72	35	240	.192	1132	10.11	16	25	0.14	1	324	2.89	5	41	46	0.41	7	12	122.5
7	Crable, Courtney	112	314	2.80	182	1041	.127	29	0.26	30	74	0.27	32	166	1.48	10	23	33	0.29	18	1	365.5
15	Moor, Kristel	35	52	1.49	37	164	.091	1	0.03	0	0	0.00	0	5	0.14	2	5	7	0.20	1	0	56.5
16	Pember, Tate	18	0	0.00	0	0	.000	1	0.06	1	3	0.06	2	26	1.44	0	0	0	0.00	0	0	1.0
4	Arrington, Mary Hann	106	5	0.05	5	44	.000	23	0.22	10	28	0.09	19	208	1.96	0	1	1	0.01	0	0	15.5
2	Schill, Taylor	86	0	0.00	2	9	-.222	30	0.35	8	30	0.09	11	195	2.27	0	0	0	0.00	0	1	8.0
	TEAM	-	-	-	-	-	-	-	-	-	-	-	12	-	-	-	-	-	-	-	-	-
	AUBURN	112	1430	12.77	683	3972	.188	1349	12.04	105	240	0.94	117	1650	14.73	66	320	226.0	2.02	87	21	1761.0
	Opponents	112	1394	12.45	571	3817	.216	1277	11.40	117	198	1.04	105	1607	14.35	52	410	257.0	2.29	60	31	1768.0

Team Statistics	AU	OPP
ATTACK		
Kills	1430	1394
Errors	683	571
Total Attacks	3972	3817
Attack Pct	.188	.216
Kills/Set	12.8	12.4
SET		
Assists	1349	1277
Attempts	3953	3761
Assist Pct	.341	.340
Assists/Set	12.0	11.4
SERVE		
Aces	105	117
Errors	240	198
Attempts	2373	2454
Serve Pct	.899	.919
Aces/Set	0.9	1.0
SERVE RECEPTIONS		
Errors	117	105
Errors/Set	1.0	0.9
Attempts	2256	2132
Reception Pct	.948	.951
DEFENSE		
Digs	1650	1607
Digs/Set	14.7	14.3
BLOCKING		
Block Solo	66	52
Block Assist	320	410
Total Blocks	226.0	257.0
Blocks/Set	2.0	2.3
Block Errors	87	60
Ball handling errors	21	31
ATTENDANCE		
Total	11263	15588
Dates/Avg Per Date	14/804	12/1299
Neutral site #/Avg	4/770	
Current win streak	0	-
Home win streak	0	-

Date	Opponent	Score	Score by set	Att.
\$Aug 29	vs North Dakota	w 3-1	25-23,18-25,25-19,25-22	134
\$Aug 29	at George Washington	L 0-3	13-25,18-25,20-25	753
\$Aug 30	vs Arkansas State	w 3-0	25-21,25-20,25-16	0
%Sep 05	at Ohio State	L 0-3	14-25,14-25,20-25	341
%Sep 05	vs Southern Illinois	L 0-3	23-25,20-25,19-25	1388
%Sep 07	vs FGCU	w 3-1	30-28,17-25,25-18,25-18	1556
*Sep 12	TROY	w 3-0	25-18,25-11,25-21	863
*Sep 13	WINTHROP	w 3-2	26-24,23-25,21-25,25-17,22-20	401
*Sep 13	USF	L 2-3	22-25,22-25,33-31,25-15,13-15	515
Sep 16	at #6 Florida State	L 2-3	17-25,28-26,25-17,16-25,8-15	847
@Sep 19	FLORIDA A&M	w 3-0	25-14,25-21,25-20	576
@Sep 20	JACKSONVILLE STATE	w 3-0	25-12,25-10,25-15	463
@Sep 20	NORTHWESTERN STATE	w 3-2	19-25,26-24,17-25,25-23,15-12	417
*Sep 26	#10 FLORIDA	L 0-3	14-25,19-25,19-25	1183
*Sep 28	at #22 Texas A&M	L 0-3	11-25,19-25,15-25	1686
*Oct 01	GEORGIA	w 3-1	25-18,25-16,23-25,25-11	629
*Oct 05	SOUTH CAROLINA	L 2-3	23-25,23-25,25-21,25-22,10-15	727
*Oct 10	at Mizzou	L 0-3	23-25,20-25,14-25	3109
*Oct 12	at #13 Kentucky	L 0-3	15-25,19-25,17-25	1980
*Oct 17	OLE MISS	L 1-3	23-25,25-15,18-25,19-25	580
*Oct 22	ALABAMA	L 0-3	12-25,12-25,19-25	1101
*Oct 31	at Mississippi St	w 3-1	25-21,25-16,18-25,25-23	183
*Nov 02	at Georgia	L 2-3	24-26,30-28,19-25,25-10,13-15	722
*Nov 07	ARKANSAS	L 0-3	19-25,17-25,21-25	2474
*Nov 09	TENNESSEE	w 3-1	26-28,25-14,25-22,25-15	701
*Nov 12	at #7 Florida	L 0-3	14-25,21-25,10-25	1933
*Nov 16	at South Carolina	w 3-2	21-25,25-20,25-21,24-26,15-9	1028
*Nov 21	at Alabama	L 1-3	13-25,29-27,22-25,16-25	2169
*Nov 23	at LSU	L 0-3	16-25,22-25,20-25	837
*Nov 26	#15 KENTUCKY	L 1-3	14-25,25-20,22-25,23-25	633

\$ - George Washington Invitational - Washington, D.C.
 % - Sports Imports D.C. Koehl Classic - Columbus, Ohio
 ^ - Active Ankle Challenge - Auburn, Ala.
 @ - War Eagle Invitational - Auburn, Ala.

Record in 3-set matches: 4-11
 Record in 4-set matches: 5-3
 Record in 5-set matches: 3-4



**2014 Auburn Volleyball
Auburn Combined Team Statistics (as of Nov 26, 2014)
Conference matches**



RECORD:	OVERALL	HOME	AWAY	NEUTRAL
ALL GAMES	4-13	2-6	2-7	0-0
CONFERENCE	4-13	2-6	2-7	0-0
NON-CONFERENCE	0-0	0-0	0-0	0-0

#	Player	sp	Attack				pct	Set		Serve			re	Dig		Blocking					bhe	points
			k	k/s	e	ta		a	a/s	sa	se	sa/s		dig	dig/s	bs	ba	total	blk/s	be		
18	Ivey, Alyssa	63	2	0.03	0	2	1.000	59	0.94	3	8	0.05	18	242	3.84	0	0	0	0.00	0	3	5.0
10	Stewart, Kelly	54	2	0.04	0	4	.500	15	0.28	8	20	0.15	9	97	1.80	0	0	0	0.00	2	0	10.0
32	Campbell, Stephanie	63	163	2.59	59	383	.272	3	0.05	11	16	0.17	0	37	0.59	5	42	47	0.75	13	0	200.0
5	Klitzke, Emily	63	158	2.51	62	367	.262	3	0.05	0	0	0.00	1	10	0.16	1	39	40	0.63	4	0	178.5
11	Barksdale, Breanna	63	106	1.68	41	267	.243	3	0.05	1	2	0.02	1	14	0.22	8	50	58	0.92	19	0	140.0
21	Filley, Alexa	63	46	0.73	16	127	.236	638	10.13	7	16	0.11	0	183	2.90	1	26	27	0.43	4	4	67.0
33	Reece, Macy	45	121	2.69	61	336	.179	3	0.07	0	0	0.00	1	20	0.44	3	15	18	0.40	6	1	131.5
7	Crable, Courtney	63	178	2.83	104	594	.125	20	0.32	15	43	0.24	15	87	1.38	2	11	13	0.21	14	0	200.5
15	Moor, Kristel	17	26	1.53	20	80	.075	1	0.06	0	0	0.00	0	3	0.18	1	0	1	0.06	1	0	27.0
16	Tate Pember	11	0	0.00	0	0	.000	1	0.09	1	3	0.09	1	20	1.82	0	0	0	0.00	0	0	1.0
4	Arrington, Mary Hann	58	3	0.05	4	32	-.031	5	0.09	5	18	0.09	13	90	1.55	0	1	1	0.02	0	0	8.5
2	Schill, Taylor	39	0	0.00	1	3	-.333	17	0.44	3	12	0.08	6	81	2.08	0	0	0	0.00	0	0	3.0
TEAM		-	-	-	-	-	-	-	-	-	-	-	7	-	-	-	-	-	-	-	-	-
AUBURN		63	805	12.78	368	2195	.199	768	12.19	54	138	0.86	72	884	14.03	21	184	113.0	1.79	63	8	972.0
Opponents		63	836	13.27	281	2122	.262	764	12.13	72	106	1.14	54	867	13.76	35	218	144.0	2.29	38	15	1052.0

Team Statistics	AU	OPP
ATTACK		
Kills	805	836
Errors	368	281
Total Attacks	2195	2122
Attack Pct	.199	.262
Kills/Set	12.8	13.3
SET		
Assists	768	764
Attempts	2191	2081
Assist Pct	.351	.367
Assists/Set	12.2	12.1
SERVE		
Aces	54	72
Errors	138	106
Attempts	1292	1417
Serve Pct	.893	.925
Aces/Set	0.9	1.1
SERVE RECEPTIONS		
Errors	72	54
Errors/Set	1.1	0.9
Attempts	1311	1154
Reception Pct	.945	.953
DEFENSE		
Digs	884	867
Digs/Set	14.0	13.8
BLOCKING		
Block Solo	21	35
Block Assist	184	218
Total Blocks	113.0	144.0
Blocks/Set	1.8	2.3
Block Errors	63	38
Ball handling errors	8	15
ATTENDANCE		
Total	8028	13647
Dates/Avg Per Date	8/1004	9/1516
Neutral site #/Avg	0/0	
Current win streak	0	-
Home win streak	0	-

Date	Opponent	Score	Score by set	Att.
*Sep 26	#10 FLORIDA	L 0-3	14-25,19-25,19-25	1183
*Sep 28	at #22 Texas A&M	L 0-3	11-25,19-25,15-25	1686
*Oct 01	GEORGIA	w 3-1	25-18,25-16,23-25,25-11	629
*Oct 05	SOUTH CAROLINA	L 2-3	23-25,23-25,25-21,25-22,10-15	727
*Oct 10	at Mizzou	L 0-3	23-25,20-25,14-25	3109
*Oct 12	at #13 Kentucky	L 0-3	15-25,19-25,17-25	1980
*Oct 17	OLE MISS	L 1-3	23-25,25-15,18-25,19-25	580
*Oct 22	ALABAMA	L 0-3	12-25,12-25,19-25	1101
*Oct 31	at Mississippi St	w 3-1	25-21,25-16,18-25,25-23	183
*Nov 02	at Georgia	L 2-3	24-26,30-28,19-25,25-10,13-15	722
*Nov 07	ARKANSAS	L 0-3	19-25,17-25,21-25	2474
*Nov 09	TENNESSEE	w 3-1	26-28,25-14,25-22,25-15	701
*Nov 12	at #7 Florida	L 0-3	14-25,21-25,10-25	1933
*Nov 16	at South Carolina	w 3-2	21-25,25-20,25-21,24-26,15-9	1028
*Nov 21	at Alabama	L 1-3	13-25,29-27,22-25,16-25	2169
*Nov 23	at LSU	L 0-3	16-25,22-25,20-25	837
*Nov 26	#15 KENTUCKY	L 1-3	14-25,25-20,22-25,23-25	633

\$ - George Washington Invitational - Washington, D.C.
 % - Sports Imports D.C. Koehl Classic - Columbus, Ohio
 ^ - Active Ankle Challenge - Auburn, Ala.
 @ - War Eagle Invitational - Auburn, Ala.

Record in 3-set matches: 0-8
 Record in 4-set matches: 3-3
 Record in 5-set matches: 1-2



2014 Auburn Volleyball
Auburn Team Match-by-Match (as of Nov 26, 2014)
All matches



Date	Opponent	sp	attack				set			serve				recept			dig	blocking				bhe	points	score
			k	e	ta	pct	a	ta	pct	sa	se	ta	pct	re	ta	pct		bs	ba	be	total			
Aug 29, 2014	vs North Dakota	4	51	24	165	.164	50	171	.292	5	12	92	.870	2	80	.975	77	4	18	3	13.0	2	69.0	3-1
Aug 29, 2014	at George Washington	3	33	24	110	.082	32	116	.276	3	5	53	.906	4	69	.942	44	2	0	1	2.0	2	38.0	0-3
Aug 30, 2014	vs Arkansas State	3	43	16	116	.233	40	114	.351	2	8	73	.890	3	51	.941	60	1	8	2	5.0	0	50.0	3-0
Sep 05, 2014	at Ohio State	3	27	24	93	.032	23	92	.250	2	4	50	.920	3	65	.954	27	2	2	0	3.0	2	32.0	0-3
Sep 05, 2014	vs Southern Illinois	3	39	23	98	.163	37	100	.370	1	9	64	.859	5	69	.928	39	1	6	0	4.0	0	44.0	0-3
Sep 07, 2014	vs FGCU	4	51	29	144	.153	46	134	.343	4	11	97	.887	2	76	.974	60	2	18	2	11.0	0	66.0	3-1
Sep 12, 2014	TROY	3	43	17	103	.252	42	105	.400	2	6	75	.920	3	48	.938	54	4	8	1	8.0	0	53.0	3-0
Sep 13, 2014	WINTHROP	5	69	42	202	.134	66	199	.332	9	11	117	.906	6	102	.941	85	5	8	5	9.0	1	87.0	3-2
Sep 13, 2014	USF	5	66	27	171	.228	61	168	.363	6	9	115	.922	7	106	.934	60	7	22	3	18.0	0	90.0	2-3
Sep 16, 2014	at Florida State	5	56	28	159	.176	49	161	.304	1	9	95	.905	4	97	.959	60	7	8	2	11.0	3	68.0	2-3
Sep 19, 2014	FLORIDA A&M	3	45	15	121	.248	40	117	.342	8	7	74	.905	2	48	.958	59	2	10	2	7.0	0	60.0	3-0
Sep 20, 2014	JACKSONVILLE STATE	3	38	9	85	.341	34	76	.447	4	7	74	.905	0	33	1.000	34	4	20	0	14.0	1	56.0	3-0
Sep 20, 2014	NORTHWESTERN STATE	5	64	37	210	.129	61	209	.292	4	4	102	.961	4	101	.960	107	4	8	3	8.0	2	76.0	3-2
Sep 26, 2014	FLORIDA	3	34	23	114	.096	33	115	.287	3	3	54	.944	4	67	.940	48	2	2	2	3.0	1	40.0	0-3
Sep 28, 2014	at Texas A&M	3	26	15	79	.139	25	79	.316	2	9	47	.809	1	68	.985	23	3	0	5	3.0	0	31.0	0-3
Oct 01, 2014	GEORGIA	4	50	24	142	.183	49	140	.350	8	10	97	.897	2	65	.969	69	4	18	4	13.0	0	71.0	3-1
Oct 05, 2014	SOUTH CAROLINA	5	73	33	181	.221	74	177	.418	4	16	107	.850	2	103	.981	61	1	14	2	8.0	1	85.0	2-3
Oct 10, 2014	at Mizzou	3	38	20	98	.184	35	96	.365	2	8	58	.862	5	67	.925	32	1	6	5	4.0	0	44.0	0-3
Oct 12, 2014	at Kentucky	3	27	26	84	.012	26	83	.313	0	3	53	.943	5	66	.924	35	0	6	4	3.0	1	30.0	0-3
Oct 17, 2014	OLE MISS	4	55	19	154	.234	52	152	.342	2	8	86	.907	3	84	.964	60	2	16	2	10.0	1	67.0	1-3
Oct 22, 2014	ALABAMA	3	32	20	102	.118	31	107	.290	0	4	45	.911	3	68	.956	52	1	2	2	2.0	1	34.0	0-3
Oct 31, 2014	at Mississippi St	4	63	18	143	.315	58	152	.382	3	9	92	.902	7	79	.911	63	2	16	6	10.0	0	76.0	3-1
Nov 02, 2014	at Georgia	5	75	22	169	.314	72	178	.404	2	9	111	.919	8	93	.914	78	1	12	11	7.0	0	84.0	2-3
Nov 07, 2014	ARKANSAS	3	34	21	105	.124	32	106	.302	4	6	59	.898	6	69	.913	33	0	8	1	4.0	0	42.0	0-3
Nov 09, 2014	TENNESSEE	4	59	28	162	.191	58	167	.347	6	4	100	.960	1	75	.987	81	2	28	3	16.0	1	81.0	3-1
Nov 12, 2014	at Florida	3	24	14	75	.133	21	73	.288	1	13	47	.723	5	63	.921	18	0	4	1	2.0	0	27.0	0-3
Nov 16, 2014	at South Carolina	5	75	26	176	.278	68	170	.400	5	14	110	.873	2	96	.979	71	2	12	6	8.0	1	88.0	3-2
Nov 21, 2014	at Alabama	4	40	15	115	.217	38	111	.342	8	10	81	.877	6	88	.932	43	0	18	1	9.0	1	57.0	1-3
Nov 23, 2014	at LSU	3	39	25	145	.097	37	139	.266	2	3	60	.950	5	72	.931	55	0	8	3	4.0	0	45.0	0-3
Nov 26, 2014	KENTUCKY	4	61	19	151	.278	59	146	.404	2	9	85	.894	7	88	.920	62	0	14	5	7.0	0	70.0	1-3
Auburn		112	1430	683	3972	.188	1349	3953	.341	105	240	2373	.899	117	2256	.948	1650	66	320	87	226.0	21	1761.0	
		112	1394	571	3817	.216	1277	3761	.340	117	198	2454	.919	105	2132	.951	1607	52	410	60	257.0	31	1768.0	

Sets played: 112
Kills per set: 12.77
Assists per set: 12.04

Service aces per set: 0.94
Digs per set: 14.73
Blocks per set: 2.02

Points per set: 15.72
Ball handling errors per set: 0.19
Reception errors per set: 1.04



2014 Auburn Volleyball
Auburn Match-by-Match KILLS-ACES-DIGS-BLOCKS (as of Nov 26, 2014)
All matches



Opponent	Date	Score	2	4	5	7	10	11	15	16	18	21	32	
			Schill,Taylor	Arrington,Mar	Klitzke,Emily	Crable,Courtn	Stewart,Kelly	Barksdale,Bre	Moor,Kristel	Pember,Tate	Ivey,Alyssa	Filley,Alexa	Campbell,Step	
vs UND	Aug 29	3-1 W	0-0-8-0	0-1-25-0	11-0-4-5	13-1-5-3	0-0-15-0	5-0-0-6	DNP	0-0-4-0	DNP	1-1-13-3	10-2-2-4	
at GW	Aug 29	0-3 L	0-2-6-0	0-0-17-0	6-0-1-2	6-0-4-0	0-0-5-0	2-0-0-0	7-0-0-0	0-0-2-0	DNP	1-0-7-0	5-0-2-0	
vs ASU	Aug 30	3-0 W	0-0-14-0	0-0-8-0	6-0-2-1	13-0-4-1	0-0-6-0	5-0-1-3	DNP	DNP	0-0-8-0	2-2-10-3	8-0-5-1	
at OSU	Sep 05	0-3 L	0-0-0-0	0-1-7-0	6-0-2-0	6-0-1-1	0-0-2-0	0-0-0-0	3-0-0-1	0-0-0-0	0-1-8-0	2-0-4-0	7-0-2-2	
vs SIU	Sep 05	0-3 L	0-0-2-0	0-0-9-0	5-0-1-4	15-0-3-0	0-1-6-0	1-0-0-0	4-0-0-0	DNP	0-0-6-0	0-0-8-0	4-0-4-0	
vs FGCU	Sep 07	3-1 W	0-0-4-0	0-0-4-0	12-0-2-6	10-1-10-1	0-1-4-0	10-0-1-6	2-0-1-1	0-0-0-0	0-1-22-0	2-1-7-2	13-0-5-4	
TROY	Sep 12	3-0 W	0-0-8-0	0-0-5-0	9-0-4-3	9-1-4-1	0-0-2-0	4-0-0-4	DNP	DNP	0-1-17-0	3-0-9-2	6-0-4-1	
WU	Sep 13	3-2 W	0-0-12-0	1-1-10-0	11-0-0-2	14-4-12-2	0-0-1-0	10-0-1-1	0-0-0-0	DNP	0-2-24-0	4-2-20-1	18-0-2-5	
USF	Sep 13	2-3 L	0-1-10-0	1-1-1-0	10-0-2-5	8-2-4-4	0-0-0-0	9-0-2-8	DNP	DNP	0-0-19-0	1-1-19-4	12-0-1-5	
at FS	Sep 16	2-3 L	0-0-10-0	0-0-8-0	3-0-0-0	13-1-7-2	0-0-1-0	6-0-1-5	7-0-1-4	DNP	0-0-17-0	5-0-8-0	13-0-4-2	
FAMU	Sep 19	3-0 W	0-1-11-0	0-1-8-0	12-0-1-3	9-1-2-0	0-0-1-0	6-0-1-2	1-0-0-0	DNP	0-1-17-0	3-2-15-2	11-2-2-3	
JSU	Sep 20	3-0 W	0-0-7-0	0-0-5-0	6-0-0-5	6-3-4-4	0-0-1-0	8-0-0-4	DNP	DNP	0-1-10-0	6-0-5-1	5-0-1-7	
NWLA	Sep 20	3-2 W	0-1-22-0	0-0-11-0	5-0-1-3	14-1-19-1	0-0-3-0	11-0-1-3	2-0-0-0	DNP	0-0-28-0	5-0-16-1	12-2-3-2	
UF	Sep 26	0-3 L	0-0-2-0	0-0-4-0	6-0-1-1	9-2-7-0	DNP	7-0-1-0	DNP	DNP	0-0-18-0	1-0-11-0	5-1-2-2	
at TAMU	Sep 28	0-3 L	0-0-1-0	0-0-2-0	7-0-0-0	6-0-2-2	0-1-1-0	5-0-0-1	0-0-0-0	DNP	0-0-7-0	0-0-8-0	5-1-1-0	
UG	Oct 01	3-1 W	DNP	0-0-10-0	9-0-1-4	11-4-7-1	0-0-19-0	8-0-1-8	DNP	DNP	0-1-9-0	5-2-18-2	7-1-3-3	
SC	Oct 05	2-3 L	0-0-6-0	0-0-7-0	18-0-0-0	15-2-8-2	0-1-10-0	8-0-2-4	14-0-2-0	DNP	1-1-13-0	4-0-12-5	13-0-1-4	
at MIZ	Oct 10	0-3 L	0-0-1-0	0-1-2-0	8-0-0-0	9-0-4-0	0-1-6-0	6-0-2-3	5-0-0-0	DNP	0-0-11-0	4-0-6-3	6-0-0-1	
at UK	Oct 12	0-3 L	0-0-4-0	0-0-8-0	7-0-0-3	6-0-6-0	1-0-1-0	5-0-0-2	0-0-0-0	DNP	0-0-9-0	1-0-5-0	7-0-2-1	
OM	Oct 17	1-3 L	0-1-8-0	2-0-9-1	9-0-1-5	15-0-8-1	0-0-3-0	8-0-0-7	3-0-0-0	DNP	0-0-17-0	3-0-11-1	15-1-3-3	
UA	Oct 22	0-3 L	0-0-6-0	0-0-2-0	8-0-0-1	6-0-2-0	0-0-10-0	2-0-0-1	4-0-1-1	DNP	0-0-17-0	2-0-9-0	10-0-5-0	
at MS	Oct 31	3-1 W	0-0-15-0	0-0-5-0	15-0-1-4	16-1-8-0	1-0-1-0	5-0-0-4	DNP	DNP	0-0-17-0	3-1-12-3	10-1-2-5	
at UG	Nov 02	2-3 L	0-1-10-0	0-0-11-0	10-0-0-3	14-1-4-1	0-0-3-0	9-0-2-1	DNP	DNP	0-0-23-0	3-0-19-1	18-0-4-6	
AR	Nov 07	0-3 L	0-0-5-0	0-1-3-0	9-0-0-0	8-1-3-1	0-0-2-0	2-0-0-3	DNP	DNP	0-1-6-0	1-1-11-2	5-0-2-1	
UT	Nov 09	3-1 W	0-0-18-0	1-2-9-0	14-0-0-6	8-1-7-1	0-2-6-0	6-0-3-8	DNP	DNP	0-0-18-0	4-0-11-3	14-1-6-8	
at UF	Nov 12	0-3 L	0-0-1-0	0-0-1-0	3-0-1-1	6-0-3-0	0-0-2-0	5-1-2-1	DNP	DNP	0-0-2-0	5-0-5-0	2-0-0-1	
at SC	Nov 16	3-2 W	0-1-4-0	0-1-6-0	16-0-2-3	20-1-6-1	0-0-10-0	7-0-1-5	DNP	0-0-0-0	1-0-25-0	4-2-14-3	11-0-0-2	
at UA	Nov 21	1-3 L	DNP	0-0-7-0	4-0-1-3	9-2-2-1	0-2-6-0	5-0-0-6	DNP	DNP	0-0-5-0	0-0-15-0	2-1-6-2	12-3-0-3
at LSU	Nov 23	0-3 L	DNP	DNP	6-0-1-2	9-0-7-1	0-1-8-0	5-0-0-2	DNP	DNP	0-0-7-0	0-0-17-0	1-0-10-1	10-1-4-2
UK	Nov 26	1-3 L	DNP	0-0-4-0	9-0-1-4	11-0-3-1	0-0-9-0	13-0-0-2	DNP	DNP	0-1-8-0	0-0-18-0	3-0-15-1	13-1-2-5



2
Taylor Schill
So. • L/DS • Arlington Heights, Ill.



4
Mary Hannah Arrington
Jr. • OH/DS • Marietta, Ga.



5
Emily Klitzke
So. • MB • Shawano, Wis.



7
Courtney Crable
Fr. • OH • Louisville, Ky.



10
Kelly Stewart
Fr. • L/DS • Tomball, Texas



11
Breanna Barskdale
So. • MB • San Diego, Calif.



15
Kristel Moor
RS-Fr. • OH • Viljandi, Estonia



16
Tate Pember
Fr. • L/DS • Kennesaw, Ga.



18
Alyssa Ivey
Jr. • SET/L • Franklin, Tenn.



21
Alexa Filley
Fr. • SET • Louisville, Ky.



32
Stephanie Campbell
So. • MB • Wildwood, Mo.



33
Macy Reese
Fr. • MB • Hendersonville, Tenn.



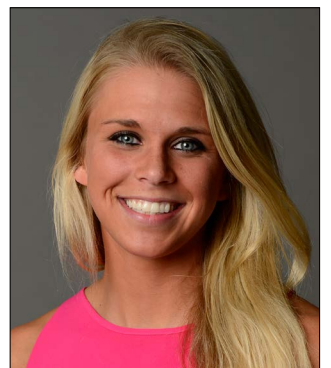
Rick Nold
Head Coach • 4th season



Eysa Ambler
Assistant Coach • 4th season



Chuck Crawford
Assistant Coach • 1st season



Stephanie Klefot
Volunteer Assistant • 1st season