

AUBURN TIGERS

WOMEN'S BASKETBALL

2007-08 Schedule/Results

| NOVEMBER | | |
|------------------------|--------------------------|----------|
| 4 | Carson-Newman (exh.) | W, 94-52 |
| 11 | Detroit | W, 91-47 |
| 14 | Troy | W, 77-61 |
| 17 | UAB | W, 93-66 |
| 21 | at Oakland | W, 71-63 |
| <i>Buckeye Classic</i> | | |
| 24 | vs. Winston-Salem State | W, 70-37 |
| 25 | vs. #15 Ohio State | W, 67-58 |
| <i>ASU Classic</i> | | |
| 30 | vs. UC Riverside | W, 64-47 |
| DECEMBER | | |
| 2 | vs. #14 Arizona State | W, 75-69 |
| 5 | Colgate | W, 99-47 |
| 15 | at #12 Texas A&M | L, 60-62 |
| 17 | at Stephen F. Austin | W, 61-49 |
| 19 | at Sam Houston State | W, 80-36 |
| <i>Hawk Classic</i> | | |
| 28 | vs. Davidson | W, 66-59 |
| 29 | vs. Saint Joseph's | L, 69-71 |
| JANUARY | | |
| 3 | #20 George Washington | L, 66-68 |
| 10 | at #2 Tennessee (FSN)* | L, 52-85 |
| 13 | #10 Georgia* | W, 82-52 |
| 20 | at Kentucky (FSN)* | 12 pm |
| 24 | LSU* | 6 pm |
| 27 | at Alabama* | 2 pm |
| FEBRUARY | | |
| 3 | Mississippi State* | 2 pm |
| 7 | at Florida* | 6 pm |
| 10 | at Arkansas* | 2 pm |
| 14 | Alabama* | 6 pm |
| 17 | South Carolina* | 2 pm |
| 21 | at Ole Miss (FSN)* | 8 pm |
| 24 | at Georgia (CSS)* | 1:30 pm |
| 28 | Vanderbilt (FSN)* | 8 pm |
| MARCH | | |
| 2 | Arkansas* | 2 pm |
| 6-9 | at SEC Tournament | TBA |
| 22-25 | NCAA Tournament 1/2 rds. | TBA |

All times Central and subject to change
 FSN - Fox Sports South
 CSS - Comcast/Charter SouthEast Sports
 Home contests in **BOLD**
 * denotes Southeastern Conference game

Quick Facts

| |
|--|
| Auburn Head Coach: Nell Fortner |
| Fortner's career record: 81-56 (5th year) |
| Fortner's Auburn record: 64-45 (4th year) |
| Kentucky head coach: Matthew Mitchell |
| Career record: 38-38 (3rd year) |
| School record: 8-9 (1st year) |
| Series record: Auburn leads 23-10 |
| Last meeting: 01/21/07 (UK 68-AU 65) |
| Rankings: Auburn (21/18) |
| Television: Fox Sports South/BBSN |
| Radio: Andy Burcham (play-by-play), Arnika Clements (color), 96.7 FM |
| Officials: Dee Kantner, Carla Fountain, David Kramer |
| Auburn Media Relations: Carol White C: 334-750-0401; O: 334-844-9182 E-mail: whitocr@auburn.edu |
| Kentucky Media Relations: Susan Lax O: 859-257-8420 E-mail: slax0@uky.edu |

Game
#18



No.21/18 AUBURN TIGERS (13-4, 1-1)

VS.

KENTUCKY WILDCATS (8-9, 2-1)

Jan. 20, 2007 • Lexington, Ky.
12 pm CT • Memorial Coliseum
Fox Sports/Big Blue Sports Network



AUBURN (13-4, 1-1 SEC) PROBABLE STARTERS

| | | | | | | | |
|-----|----|------------------|------|-----|----------|----------|---------|
| F | 21 | Jordan Greenleaf | 6-1 | So. | 5.8 ppg | 5.5 rpg | 1.2 spg |
| G/F | 24 | DeWanna Bonner | 6-4 | Jr. | 16.4 ppg | 10.2 rpg | 1.3 bpg |
| G | 05 | Alli Smalley | 5-9 | Fr. | 10.7 ppg | 2.9 rpg | 2.8 apg |
| G | 12 | Sherell Hobbs | 5-11 | Jr. | 11.7 ppg | 5.4 rpg | 2.4 spg |
| G | 04 | Tamela McCorvey | 5-9 | Sr. | 8.6 ppg | 2.9 rpg | 3.0 apg |

KENTUCKY (8-9, 2-1 SEC) PROBABLE STARTERS

| | | | | | | | |
|---|----|------------------|------|-----|----------|---------|---------|
| F | 34 | Victoria Dunlap | 6-1 | Fr. | 7.9 ppg | 6.3 rpg | 1.8 spg |
| C | 04 | Sarah Elliott | 6-6 | Sr. | 10.9 ppg | 6.3 rpg | 1.8 bpg |
| G | 11 | Samantha Mahoney | 5-10 | Sr. | 14.5 ppg | 3.4 rpg | 2.4 apg |
| G | 24 | Amber Smith | 5-5 | Fr. | 6.1 ppg | 2.8 rpg | 2.8 apg |
| G | 25 | Amani Franklin | 5-11 | So. | 6.9 ppg | 3.8 rpg | 1.1 apg |

Scouting Auburn

No. 21/18 Auburn ended its three-game losing streak on Sunday by defeating then-No. 10 Georgia, 82-52. It was the first win for the Tigers over a top 10 opponent in five years. The Tigers had Thursday off from competition and resume play today in Lexington. It will be the second televised game for Auburn as today's game is being broadcast by Fox Sports South/Big Blue Sports Network. DeWanna Bonner, the SEC's second-leading scorer and rebounder, headlines Auburn on both sides of the ball. Bonner averages a double-double with 17.6 points and 10.2 rebounds a game. Bonner also leads Auburn in fourth in the SEC in free throw percentage as she makes 78 percent of her attempts. Also averaging in double figures is Sherell Hobbs (11.7) and Alli Smalley (10.7). Defensively, Hobbs adds a spark with 2.4 steals and 5.4 rebounds a game. Smalley leads Auburn from long range, as the freshman has made at least one three in 76 percent of the games thus far. Auburn is averaging 73.1 points a game, while limiting its opponents to 57.5 points; both numbers rank in the top five in the SEC. The Tigers are shooting 44 percent from the field and 37 percent from long range. Auburn is grabbing 42.4 rebounds a game, second best in the league, while holding its opponents to 34.3 a game, second best in the conference, for an SEC-leading 8.1 advantage.

Scouting Kentucky

Kentucky is coming of its first loss of the SEC season and the first since Jan. 1, as the Wildcats fell to No. 2 Tennessee 40-65, on Thursday in Memorial Coliseum. Samantha Mahoney led the offensive attack with 12 points, while Amber Smith dished out a team best six rebounds. Mahoney, a two-time second team All-SEC honoree, leads the Wildcats with 14.5 points a game. She is aided by Sarah Elliott, also a second team All-SEC honoree, who turns in 10.9 points, while also contributing 6.3 rebounds. Victoria Dunlap also dishes out 6.3 boards per game. Kentucky is averaging 64.4 points and is shooting 39 percent from the field (27.1 percent from three-point range). The Wildcats grab 40.2 rebounds a game, 27 of which are on the defensive glass. Kentucky is led by first-year head coach Matthew Mitchell who came to UK from Morehead State where he served as head coach the past two seasons. Prior to that Mitchell was an assistant at UK for two seasons under Mickie DeMoss.

Series Record

Auburn holds the all-time advantage over Kentucky 23-10 and has won eight of the last 10 meetings with the Wildcats. When playing in Lexington, Auburn is 10-3 all-time and has won the last three times on the road. Nell Fortner is 3-1 vs. Kentucky, with the lone loss coming last season, 65-68, in Auburn.

Last Time Out

DeWanna Bonner and Auburn responded to a humbling loss with a resounding blowout of Georgia. Bonner had 21 points and 13 rebounds in an 82-52 win over No. 10 Georgia on Sunday, nearly reversing the score from a humiliating defeat at No. 2 Tennessee three days earlier. The victory was the Tigers' first over a top 10 team in five years. Auburn had five players score in double figures and held the Lady Bulldogs to 30 percent shooting. It was Auburn's first win over a top 10 team since a 64-36 victory over No. 8 Arkansas in 2003 and the first in four years under Fortner. The win also snapped a three-game skid, including that 85-52 loss to the Lady Vols.

Up Next

Auburn continues play on Jan. 24 when it hosts No. 9/8 LSU at 6 p.m. CT. It will be the fourth game in 2008 and seventh this season against a ranked opponent. Auburn will travel to intrastate rival Alabama on Sunday for a 2 p.m. CT contest.

2007-08 Auburn Tigers Numerical Roster

| No. | Name | Pos. | Ht. | Yr. | Exp. | Hometown (High School/Previous School) |
|-----|-------------------|------|------|-----|------|--|
| 1 | Trevesha Jackson | F | 6-0 | Jr. | 1L | Auburn, Ala. (Gulf Coast CC) |
| 4 | Tamela McCorvey | G | 5-9 | Sr. | 1L | Pensacola, Fla. (Okaloosa-Walton CC) |
| 5 | Alli Smalley | G | 5-9 | Fr. | HS | Arab, Ala. (Arab) |
| 11 | Ruth Ketcham | G | 5-8 | Fr. | HS | Birmingham, Ala. (Briarwood Christian) |
| 12 | Sherell Hobbs | G | 5-11 | Jr. | 2L | Huntsville, Ala. (J.O. Johnson) |
| 15 | Cassie Moore | C | 6-4 | Fr. | HS | Montgomery, Ala. (Jeff Davis) |
| 21 | Jordan Greenleaf | F | 6-1 | So. | 1L | Morrow, Ga. (Morrow HS) |
| 22 | Reneisha Hobbs* | G | 5-10 | So. | 1L | Huntsville, Ala. (J.O. Johnson) |
| 24 | DeWanna Bonner | G | 6-4 | Jr. | 2L | Fairfield, Ala. (Fairfield) |
| 32 | Juanitta Wallace | F | 6-4 | Jr. | 2L | Detroit, Mich. (Tennessee State) |
| 33 | KeKe Carrier** | C | 6-7 | Jr. | 2L | Lake Charles, La. (LaGrange) |
| 34 | Alexis Ogubie | F/C | 6-2 | Sr. | 3L | Huntsville, Ala. (J.O. Johnson) |
| 44 | Whitney Boddie*** | G | 5-9 | Jr. | 2L | Florence, Ala. (Bradshaw) |
| 50 | Milaika Pickard | F | 6-2 | So. | 1L | Columbus, Ga. (Carver) |

* Out for the season due to injury.

** Red-shirting this season.

*** Academically ineligible.

Coaching Staff

| | |
|-------------------------------|---|
| Head Coach | Nell Fortner (Texas, 1982) |
| Assistant Coach | Kerry Cremeans (Florida, 1992) |
| Assistant Coach | Seth Kushkin (Wisconsin, 1992) |
| Assistant Coach | Daedra Charles-Furlow (Tennessee, 1991) |
| Dir. of Basketball Operations | Melissa Maines |
| Video Coordinator | Kelly Komara |
| Graduate Assistant | Ramin Mazaheri |
| Administrative Assistant | Arnika Clements |

Pronunciation Guide

| | |
|-----------------------|---------------|
| Whitney BODDIE | Body |
| DAEDRA Charles-Furlow | DAY-drah |
| Kerry CREMEANS | creh-MEANS |
| TREVESHA Jackson | trah-VEE-shah |
| TAMELA McCorvey | TAM-eh-lah |
| Alexis OGUBIE | oh-GOO-be-A |
| MILAIKA Pickard | mill-AY-kah |

Interview Policies

Requests to interview Coach Fortner or another member of the Tiger basketball team should be made at least 24 hours in advance to Carol White of the Auburn Media Relations office in the Athletic Complex by calling 334-844-9182. Requests will be met based on the players class and practice schedules.

On the Air

The Tigers can be heard live on Mix 96.7 FM for the entire regular and postseasons. Andy Burcham, in his 20th season with the women's basketball program and handles play-by-play duties. Arnika Clements joins Burcham this season and provides color commentary. Each game can also be heard live on the internet at www.auburntigers.com.

Weekly Live Radio Show

Every Monday at 6 p.m. CT Nell Fortner will host a live show from Logan's Roadhouse in Tiger Town with Andy Burcham. Fans can listen to the show on 96.7 FM. The number to call in to the show is 1-800-282-2557.

The Net

The home for Auburn Athletics on the web, www.auburntigers.com, is your source for Auburn Women's Basketball. The website offers the

most recent information and news on the Tigers. At auburntigers.com, you can also listen to each women's basketball game broadcast live and follow along on live scoring for every home game.

Media Relations

Carol White handles the media relations duties for the women's basketball team. She may be reached in her office at 334-844-9182 or 9800, via email at whitecr@auburn.edu or on her cell at 334-750-0401.

Media Services

Members of the media should enter the Coliseum on the north side. A media workroom, Room 2033A is available to the news media on the second floor of the building, with access limited to those with working credentials. Telephones and ethernet lines are available to the media in the media workroom.

Photo/Video

Todd Van Emst of the Auburn Media Relations office handles all photo requests. Please contact Van Emst at 334-844-9514. Video services are available and can be arranged through Steve Sain in the Auburn Media Relations office at 334-844-9809.

Tigers Upcoming Schedule (Subject to Change)

| Monday - 14 | Tuesday - 15 | Wednesday-16 | Thursday - 17 | Friday - 18 | Saturday - 19 | Sunday - 20 |
|-------------|---|-----------------------------------|---------------|---|---------------|---|
| OFF | PRACTICE 12:30-3:30 pm BEMC WEIGHTS 3:30 pm | PRACTICE 12:30-3:30 pm BEMC | OFF | PRACTICE 12:30-3:30 pm BEMC WEIGHTS 3:30 pm | TRAVEL | SHOOT 8 a.m. GAME at Kentucky, 12 pm CT |

Statistical Comparison - AU vs. UK

| | | |
|----------------------|----------------------|-------------------------------|
| Coach | Nell Fortner | Matthew Mitchell |
| Record | 13-4, 1-1 | 8-9, 2-1 |
| Top Scorer | Bonner (17.4) | Mahoney (14.5) |
| Top Rebounder | Bonner (10.0) | Elliott (6.3) Dunlap (6.3) |
| Series Record | AU leads 23-10 | |
| at Auburn | AU leads 8-5 | |
| at Kentucky | AU leads 10-3 | |
| at neutral | AU leads 5-2 | |
| overall streak | AU won 8 of last 10. | |
| 2007-08 Record | 13-4 | 8-9 |
| Conf. Record | 1-1 | 2-1 |
| Points Per Game | 73.1 | 64.4 |
| Scoring Margin | +15.6 | +0.3 |
| FG Percentage | .439 | .385 |
| Opp. FG % | .379 | .391 |
| 3FG Percentage | .367 | .271 |
| Opp. 3FG % | .297 | .311 |
| Rebounds | 42.4 | 40.2 |
| Opp. Rebounds | 34.3 | 39.7 |
| Rebound Margin | +8.1 | +0.5 |
| Turnovers | 16.4 | 17.2 |
| Opp. Turnovers | 19.8 | 17.9 |
| Steals | 10.9 | 6.9 |
| Opp. Steals | 6.8 | 6.9 |
| Blocks | 5.1 | 4.2 |
| Opp. Blocks | 3.2 | 3.6 |

In the SEC (as of Jan. 14)

2007-08 Standings

| Team | SEC | Pct. | All | Pct. |
|---------------|------------|-------------|-------------|-------------|
| Tennessee | 3-0 | 1.000 | 15-1 | .938 |
| LSU | 2-0 | 1.000 | 13-3 | .813 |
| Vanderbilt | 2-1 | .667 | 13-5 | .722 |
| Kentucky | 2-1 | .667 | 8-9 | .471 |
| Auburn | 1-1 | .500 | 13-4 | .765 |
| Florida | 1-1 | .500 | 12-5 | .706 |
| Ole Miss | 1-1 | .500 | 7-8 | .467 |
| Arkansas | 1-2 | .333 | 16-2 | .889 |
| Georgia | 1-2 | .333 | 14-3 | .824 |
| Alabama | 1-2 | .333 | 8-10 | .444 |
| Miss. State | 0-2 | .000 | 12-5 | .706 |
| S. Carolina | 0-2 | .000 | 11-6 | .647 |

This Week in the SEC

January 17

- *Arkansas 63, Alabama 49
- *Vanderbilt 67, Georgia 59
- *Tennessee 65, Kentucky 40

January 20

- *Auburn at Kentucky [BB/FS] 1 pm ET
- *Florida at Arkansas [SUN] 2 pm
- *Mississippi State at LSU [COX-TD] 2 pm
- *South Carolina at Ole Miss 2 pm
- *Vanderbilt at Tennessee [RSN] 3 pm ET
- *Alabama at Georgia [RSN] 5 pm ET

January 24

- *LSU at Auburn 6 pm
- *Ole Miss at Mississippi State 7 pm
- *Arkansas at Tennessee 7 pm ET
- *Georgia at Florida 7 pm ET
- *Kentucky at South Carolina [RSN] 7 pm ET

January 27

- *Auburn at Alabama 2 pm
- *Mississippi State at Arkansas 2 pm
- *Ole Miss at Vanderbilt 2 pm
- *LSU at Kentucky [RSN] 2:30 pm ET
- *Florida at South Carolina 3 pm ET
- Georgia at Oklahoma [ESPN2] 5 pm ET

All times central unless noted. RSN - Fox Sports Net South, Fox Sports Net Southwest, Sun Sports; CSS - Comcast Sports Southeast; COX - Cox Sports; BB/FS - Big Blue Network/FSN South.

Last Meeting with the Wildcats

Down by as many as 13 points in the first half, Auburn went on a 17-7 run to take its first lead of the game, but it was not enough to overcome Jennifer Humphrey's 16 points and 29 rebounds as Kentucky dropped Auburn, 68-65, in BEMC. DeWanna Bonner scored 23 points for her second 20-point game in a row, fifth of the season and ninth of her career. Whitney Boddie added 19 and Sherell Hobbs scored 10 to give Auburn three players in double-digits for the 17th time in 21 games.

Kentucky Connections

Kentucky has one player who hails from the state of Alabama, freshman Catina Bett. Bett is from Gadsden Ala., and a product of Gadsden City HS. Kentucky assistant AD for women's basketball (assistant coach from 2003-2007) was an assistant at Purdue from 2006-2003. During her time with Purdue, she under Nell Fortner for one season (2007) and with Kerry Cremeans (1996-2003) and Seth Kushkin (1998-99). Stackhouse served as one of Kelly Komara's assistant coaches at Purdue, along with Cremeans and Kushkin.

BEMC and the SEC

Auburn has been successful in its SEC home openers. Since the 1982-83 season, the Tigers have gone 104-52 in the first SEC game of the season in Beard-Eaves-Memorial Coliseum. In that 25 season span, the Tigers have gone undefeated six times in SEC play in BEMC and have posted winning ledgers 17 times. The 82-52 victory over Georgia on Jan. 13 was the first SEC home opening win for Auburn since Jan. 15, 2004, ironically against Georgia (72-54).

Tigers in the Rankings

Auburn improved to No. 21 in the AP poll after receiving 278 votes and is No. 18 in the coaches poll with 219 votes. Kentucky is not ranked in either poll.

Auburn vs. Ranked Teams

The Tigers are faced their sixth ranked opponent of the season on Jan. 13 and third straight vs. then-No. 10 Georgia. Auburn is 84-139 all-time versus ranked teams and is 47-43 in home games and 22-65 in road games. On Dec. 2 Auburn defeated then-No. 14 Arizona State to mark the second time this season the Tigers have defeated a top-15 opponent (defeated No. 15 Ohio State on Nov. 25). The Tigers have lost to No. 10 Texas A&M, No. 20 George Washington and No. 2 Tennessee.

A First Time for Everything

Auburn's 82-52 victory over then-No. 10 Georgia on Jan. 13 marked the first victory for a Tiger team over a top 10 opponent since Auburn defeated No. 8 Arkansas on Jan. 26, 2003 (64-36). It was also the first victory over a top 10 opponent for fourth-year head coach Nell Fortner. It was also the first win for Auburn over Georgia since Jan. 15, 2004 when Auburn defeated the Lady Bulldogs (72-54). In addition, it was Fortner's first victory over Georgia since coming to Auburn in 2004.

Offense Wins Games

Auburn is 47-1 when scoring 70 or more points in the Nell Fortner era. The only time Auburn has lost when scoring at least 70 points was on Jan. 20, 2005 vs. No. 7 Tennessee, 71-81. When scoring less than 70 points, Auburn is 18-44 during the Fortner era.

In January

Auburn is 170-87 all-time in the month of January, including a 7-16 mark under Nell Fortner (records begin in 1978-79 season, not all dates provided prior to or during that season).

On This Date

This will be Auburn's 13th game ever on Jan. 13 (records starting in the 1979-80 season). Auburn is 9-3 when playing on this date and 5-2 when playing on the road. The last time Auburn played on Jan. 20 was in 2005 when the Tigers fell to No. 7 Tennessee 71-81. Auburn has never played Kentucky on Jan. 20.

Fantastic Freshman

The Tigers have felt the presence of freshman Alli Smalley on the court this season. Smalley has scored 182 of the 264 points (69 percent) for the freshman class, 81 of which have been from beyond the arc. Smalley has netted at least one trey in 13 of 17 games this season and leads the team with 27 three-pointers made.

Tough Losses

Three of Auburn's four losses this season have been by a mere two points. The Tigers fell to then-No. 20 George Washington on Jan. 3, 66-68, then-No. 12 Texas A&M on Dec. 15, 60-62, and at Saint Joseph's, 69-71 (Dec. 29). In those three games, the Tigers fought back from a double-digit deficit to bring the game with reach in the final seconds. Three of the four losses have come from top 20 teams.

Double-Digiting

Auburn has had at least three players scoring in double-digits in 13 of 17 games this season. The Tigers came together offensively vs. Georgia as the team had five players scoring in double figures. DeWanna Bonner has had 14 double-digit performances, including nine times in the last 10 games.

In the Wins

In Auburn's 13 wins this season, the Tigers averaged 76.6 points per game, and held its opponents to 53.2 points. In those victories, Auburn shot 46.2 percent overall and 37.2 percent from three-point range. The Tigers grabbed 43 rebounds, which was 9.8 more than its opponents. DeWanna Bonner has averaged 17.4 points and 10.2 rebounds in the 13 wins.

USA Today ESPN/Coaches Poll - Jan. 15

| Rk. | Team | 07-08 | Pts. |
|------------|--------------------------|-------------|------------|
| 1. | Connecticut (31) | 15-0 | 775 |
| 2. | Tennessee | 14-1 | 742 |
| 3. | North Carolina | 16-1 | 706 |
| 4. | Maryland | 20-1 | 679 |
| 5. | Rutgers | 13-2 | 658 |
| 6. | Stanford | 14-3 | 599 |
| 7. | Baylor | 14-1 | 593 |
| 8. | LSU | 13-3 | 526 |
| 9. | California | 15-2 | 512 |
| 10. | Oklahoma | 10-3 | 504 |
| 11. | Georgia | 14-2 | 413 |
| 12. | Duke | 13-4 | 409 |
| 13. | George Washington | 13-3 | 374 |
| 14. | West Virginia | 12-3 | 367 |
| 15. | Notre Dame | 13-3 | 277 |
| 16. | Texas A&M | 12-4 | 269 |
| 17. | Ohio State | 13-3 | 261 |
| 18. | Auburn | 13-4 | 219 |
| 19. | Oklahoma State | 14-1 | 192 |
| 20. | Old Dominion | 12-3 | 181 |
| 21. | Wyoming | 14-1 | 180 |
| 22. | DePaul | 12-3 | 144 |
| 23. | Texas | 12-4 | 139 |
| 24. | Pittsburgh | 13-3 | 63 |
| 25. | Arizona State | 11-5 | 57 |

Others Receiving Votes

Arkansas 54, Iowa State 31, Syracuse 22, Hartford 14, Utah 14, Georgia Tech 13, Illinois State 12, Marist 12, Western Kentucky 12, Liberty 11, Nebraska 7, Colorado 6, **Vanderbilt 5**, Kansas State 4, Penn State 4, Xavier 4, N.C. State 3, UTEP 3, Middle Tenn. St. 2, Jacksonville 1, Minnesota 1, Quinnipiac 1.

AP Poll - Jan. 14

| Rk. | Team | 07-08 | Pts. |
|------------|--------------------------|-------------|-------------|
| 1. | Connecticut (50) | 15-0 | 1250 |
| 2. | Tennessee | 14-1 | 1192 |
| 3. | North Carolina | 16-1 | 1133 |
| 4. | Maryland | 19-1 | 1101 |
| 5. | Rutgers | 13-2 | 1065 |
| 6. | Baylor | 14-1 | 950 |
| 7. | Stanford | 14-3 | 943 |
| 8. | California | 15-2 | 877 |
| 9. | LSU | 13-3 | 858 |
| 10. | Duke | 13-3 | 808 |
| 11. | Oklahoma | 10-3 | 759 |
| 12. | Georgia | 14-2 | 603 |
| 13. | George Washington | 13-3 | 555 |
| 14. | West Virginia | 12-3 | 538 |
| 15. | Old Dominion | 13-3 | 447 |
| 16. | Ohio State | 13-3 | 447 |
| 17. | Notre Dame | 13-3 | 431 |
| 18. | Oklahoma State | 14-1 | 378 |
| 19. | Texas A&M | 12-4 | 349 |
| 20. | Wyoming | 14-1 | 301 |
| 21. | Auburn | 13-4 | 278 |
| 22. | Pittsburgh | 13-3 | 194 |
| 23. | DePaul | 12-3 | 177 |
| 24. | Texas | 12-4 | 154 |
| 25. | Colorado | 13-3 | 98 |

Others Receiving Votes

Arizona State 55, Kansas State 41, Georgia Tech 36, Syracuse 32, Illinois State 26, **Arkansas 25**, Nebraska 24, Virginia 22, Utah 11, Michigan State 7, Iowa State 6, **Vanderbilt 6**, Kansas 3, Dayton 3, Minnesota 3, Louisville 3, Florida State 2, Liberty 2.

Bold are 2007-08 opponents and Auburn ranking.

In the RPI

Auburn is 41st in the RPI (realtimerpi.com) with a rating of .6012, while Kentucky is 96th with a rating of .5467. Including No. 1 Tennessee, four Tiger opponents are currently ranked in the top 20. The SEC is currently fourth in the RPI, behind the Big 12, Big East and ACC.

In the SEC

Auburn is ranked in the top five in the conference in 15 of 19 categories, including first in rebounding margin (+8.1) and second in rebounding defense (34.2) and assist/turnover ratio (0.95). DeWanna Bonner is second in the league in both scoring (17.6) and rebounding (10.2). For a complete listing of the SEC rankings, see page six.

Outside the League

Nell Fortner has guided the Tigers to a 43-14 ledger in non-conference play. When playing in Beard-Eaves-Memorial Coliseum, Fortner's teams have posted a 18-3 mark. The only three non-conference losses in BEMC came from No. 20 George Washington on Jan. 3, 2008 (66-68), Xavier on Dec. 2, 2005 (58-60) and No. 2 Duke on Dec. 31, 2004 (61-80).

Auburn in SEC Openers

Auburn is 10-16 all-time in SEC openers (conference play began in the 1982-83 season). The Tigers are 0-4 in the conference since Nell Fortner became head coach in 2004-05. The loss on Jan. 10 at Tennessee was the first loss to the Lady Vols when they were the SEC opening opponent; Auburn is now 3-1 vs. UT in SEC openers.

A Year In Review

The Tigers finished the 2007 portion of the season 12-2. It ties for the best start for the Tigers in the Nell Fortner era since 2003-04 when Auburn also went 12-2.

Tigers Earn Spots on Hawk Classic All-Tourney Team

Freshman Alli Smalley earned a spot on her first all-tournament team at the Hawk Classic after averaging 13.5 points. In addition, DeWanna Bonner was selected to the team after putting up 30 points and 19 rebounds in the championship game.

Bonner Earns 1,000 pts./500 rbs.

DeWanna Bonner became the 23rd player at Auburn to earn 1,000 career points on her first shot vs. Colgate. Bonner earned her 500th career rebound vs. UC Riverside to become the 20th player in AU history to reach the 500 mark. Bonner also became just the 11th player at Auburn to have both 1,000 points and 500 rebounds.

Dominating Defense

Auburn grabbed a season best 61 rebounds at Stephen F. Austin on Dec. 17. It was the most rebounds by a Tiger team since Dec. 2, 2004 vs. Grambling State when the team put up 64 boards in the 87-44 win.

Re-writing the Record Books

Auburn made 12-of-17 three-pointers against Colgate to set a new Auburn record for three's made in a game. The Tigers were able to set the record thanks to the hot hands of freshman Ruth Ketcham who made 6-of-8 from the arc. The previous record was 10 set on Dec. 28, 2001 vs. Iowa State.

Dominating the Desert

Auburn captured its second tournament title of the season and fourth straight on Dec. 2 by defeating then-No. 14 Arizona State at the ASU Classic. Sherell Hobbs earned MVP honors after averaging 17 points (a career high 26 vs. ASU), 5 rebounds, 2 assists and 2 steals. It was her second straight All-Tournament honor. Tamela McCorvey was also voted to the All-Tournament team.

And the Award Goes To

Whitney Boddie was named MVP of the Buckeye Classic after averaging 16.5 points, 9.5 rebounds and 4.5 assists in the two-game tournament. Against the Buckeyes, Boddie turned in a season best 20 points, one point shy of her career high, and 10 rebounds, one rebound shy of tying her career high. It marked her second double-double of the week and third of her career. She also dished out seven assists vs. Ohio State. Sherell Hobbs and DeWanna Bonner were also named to the All-Tournament team.

Boddie Named SEC Player of the Week

Whitney Boddie was named SEC Player of the Week after her outstanding performance at the Buckeye Classic where she earned MVP honors.

Smalley Named SEC Freshman of the Week

Alli Smalley went 4-for-6 vs. UAB, including 3-for-3 in the first half, en route to turning in 20 points. For her efforts against UAB and Troy, Smalley earned SEC Freshman of the Week honors.

Thirty Something

DeWanna Bonner turned in a career best 31 points (10-of-16 FG, 11-of-12 FT) vs. UAB on Nov. 17, marking the first time in her career she has scored over the 30 point mark. Bonner is the first Auburn player to score 30 or more points since Natasha Brackett on Feb. 17, 2005 at Alabama (32).

Miscellaneous Stats

| Double-Doubles | Season | Career |
|------------------|--------|--------|
| Whitney Boddie | 2 | 3 |
| DeWanna Bonner | 8 | 24 |
| Sherell Hobbs | 0 | 2 |
| Jordan Greenleaf | 0 | 1 |
| Trevesha Jackson | 1 | 3 |
| Tamela McCorvey | 0 | 1 |
| Alexis Ogubie | 0 | 1 |

| 30+ Games | Season | Career |
|----------------|--------|--------|
| DeWanna Bonner | 2 | 2 |

| 20+ Games | Season | Career |
|-----------------|--------|--------|
| Whitney Boddie | 1 | 2 |
| DeWanna Bonner | 5 | 17 |
| Sherell Hobbs | 2 | 4 |
| Ruth Ketcham | 1 | 1 |
| Tamela McCorvey | 0 | 1 |
| Alli Smalley | 1 | 1 |

| 10+ Rebound Games | Season | Career |
|-------------------|--------|--------|
| Whitney Boddie | 2 | 3 |
| DeWanna Bonner | 10 | 28 |
| Jordan Greenleaf | 2 | 3 |
| Sherell Hobbs | 0 | 2 |
| Trevesha Jackson | 1 | 3 |
| Alexis Ogubie | 0 | 4 |

| 10+ Assist Games | Season | Career |
|------------------|--------|--------|
| Whitney Boddie | 1 | 4 |
| Tamela McCorvey | 1 | 2 |

Games Led Auburn In ...

| Scoring | Season | Career |
|------------------|--------|--------|
| DeWanna Bonner | 8 | 35 |
| Jordan Greenleaf | 1 | 2 |
| Sherell Hobbs | 3 | 15 |
| Ruth Ketcham | 1 | 1 |
| Tamela McCorvey | 2 | 5 |
| Alli Smalley | 2 | 2 |

| Rebounding | Season | Career |
|------------------|--------|--------|
| Whitney Boddie | 4 | 7 |
| DeWanna Bonner | 12 | 40 |
| Jordan Greenleaf | 2 | 9 |
| Sherell Hobbs | 1 | 12 |
| Trevesha Jackson | 2 | 5 |
| Tamela McCorvey | 1 | 1 |
| Alexis Ogubie | 0 | 4 |

| Assists | Season | Career |
|------------------|--------|--------|
| Whitney Boddie | 9 | 45 |
| DeWanna Bonner | 0 | 7 |
| Jordan Greenleaf | 1 | 1 |
| Sherell Hobbs | 0 | 6 |
| Tamela McCorvey | 3 | 12 |
| Alli Smalley | 5 | 5 |

Ball Thieves

Whitney Boddie set a new career high in steals vs. Detroit as the junior grabbed six. Boddie's previous high was five which is earned on Dec. 17, 2005 vs. Louisiana-Lafayette. Auburn registered 20 steals for the game, which was the most since Dec. 21, 2004 when the Tigers had 23 versus Monmouth in Branch, N.J.

Auburn vs. the State

Auburn is 202-54 all-time versus school's in the state of Alabama. Of the 54 losses, 32 have come to Alabama, but Auburn still holds the all-time advantage 34-32. Nell Fortner is 8-1 all-time versus schools in the state, with the only loss coming to Alabama Jan. 8, 2006 (54-68).

Home Cookin'

Since a 77-70 loss to Virginia on Jan. 5, 1992, the Auburn Tigers have compiled a 114-5 record against non-conference opponents in Beard-Eaves-Memorial Coliseum.

Hope You Enjoy Your Stay

Beard-Eaves-Memorial Coliseum has seen some outstanding competition in its 36 seasons. Of all active arenas, BEMC ranks No. 8 in wins for the home team with a 324-64 record all-time for the Tigers, an 83.5 win percentage. In all-time arenas, Beard-Eaves ranks No. 10.

Sweet Home Alabama

The 2007-08 roster includes eight members who call the state of Alabama home. It is the largest contingent of Alabama natives on a team in Auburn history. Whitney Boddie (Florence), DeWanna Bonner (Fairfield), Reneisha Hobbs (Huntsville), Sherell Hobbs (Huntsville), Trevesha Jackson (Auburn), Ruth Ketcham (Birmingham), Cassie Moore (Montgomery), Alexis Ogubie (Huntsville) and Alli Smalley (Arab) all hail from Alabama.

Season Openers

In 36 seasons, Auburn has put together a 33-4 record in season home openers. In season-opening games (road or home) the Tigers are 30-7. With the 91-47 win over Detroit on Nov. 11, Auburn has now won the last three season openers and the last 29 home openers.

Tall Order

Once again, fans this season will notice a large lineup for the Tigers - one that has an average height of 72.00 inches (or approximately 6-0). With 13 players on the roster, seven are 6-0 and above.

Injury Report

Sophomore guard Reneisha Hobbs will not play this season due to an ankle injury suffered in the pre-season.

Sister Act

Once again this season, the Tigers roster boasts a pair of sisters in sophomore Reneisha Hobbs and junior Sherell Hobbs of Huntsville, Ala. Prior to last season, the last time an Auburn team featured sisters was 1988-89 when Mae Ola and Ruthie Bolton played together.

Preseason Picks

Auburn was picked to finish fifth in the Southeastern Conference by a vote of the writers at media days and by the league's coaches. DeWanna Bonner was selected to the Preseason All-SEC First Team by the writers and coaches.

Bonner Highlights Preseason National Nods

Junior guard DeWanna Bonner not only received preseason recognition in the SEC, but also earned national nods. *The Sporting News* and *Gballmag.com* selected her third and second team All-American, respectively.

Tigers on the Tube

Auburn is currently scheduled to play on television five times during the 2007-08 season. The Tigers will be televised on FSN South on Jan. 10 at Tennessee, Jan. 20 at Kentucky, Feb. 21 at Ole Miss and Feb. 28 in Auburn. The Auburn vs. Georgia game in Athens on Feb. 24 will be broadcast on CSS.

Kushkin Joins Coaching Staff

Seth Kushkin joined the Auburn program as an assistant coach in May 2007 after spending last season at Georgia Tech in the same capacity. Kushkin has had two other collegiate assistant assignments, including two seasons at Purdue (1998-99) and three at Ohio State (2000-02). Kushkin helped the Boilermakers develop their trademark defense en route to capturing the 1999 National Championship, in addition to Big Ten Tournament titles in 1998 and 1999. He graduated from Wisconsin in 1992.

Bringin' Some Bling Back

DeWanna Bonner's suitcase coming back from Russia was a little bit heavier this summer. Bonner scored 16 points for Team USA in the finals of the FIBA Americas U21 Championship en route to the U.S. capturing the gold medal over Australia.

New Arena Groundbreaking

The Auburn University Board of Trustees approved the building of a new \$92.5 million basketball arena and practice facility June 29, 2007. Groundbreaking for the new arena will occur in the summer of 2008 with the facility opening prior to the 2010-011 season. The arena, with approximate capacity of 9,600, will include over 29,000-square feet of student-athlete space, a two-court practice facility, coaches offices, the Auburn Athletics Ticket Office, an AU Team Store, the relocated Lovelace Museum, two food courts along with many other amenities. The facility will be build on campus north and west of the existing BEMC on Roosevelt Drive, across the street from the Student Activities Center parking lot.

Auburn in the SEC (Jan. 18 - all games)

Scoring Offense: 5th, 73.1
Scoring Defense: 4th, 57.5
Scoring Margin: 4th, +15.6
Free Throw Percentage: 6th, .684
Field Goal Percentage: 5th, .439
Field Goal % Defense: 8th, .379
3-pt. FG Percentage: 5th, .367
3-pt. FG % Defense: 3rd, .297
Rebounding Offense: 2nd, 42.4
Rebounding Defense: 2nd, 34.2
Rebounding Margin: 1st, +8.1
Blocked Shots: 4th 5.12
Assists: 6th, 15.59
Steals: 4th, 10.94
Turnover Margin: 5th, +3.41
Assist/Turnover Ratio: 2nd, 0.95
Offensive Rebounds: 4th, 15.41
Defensive Rebounds: 5th, 26.94
3-pt. Fied Goals Made: 10th, 4.29

Auburn Players in the SEC (Jan. 18- all games)

Scoring: DeWanna Bonner - 2nd (17.6), Sherell Hobbs - t-18th (11.7), Alli Smalley - 25th (10.7)
Rebounding: DeWanna Bonner - 2nd (10.2)
Field Goal Pct: DeWanna Bonner - 7th (.476)
Assists: Tamela McCorvey - t-15th (3.00)
Free Throw Pct.: DeWanna Bonner - 4th (.779)
Steals: Sherell Hobbs - 6th (2.41)
3-pt. FG Made: Alli Smalley - 11th (1.59), Tamela McCorvey - 15th (1.47)
Blocks: Jordan Greenleaf - t-11th (1.31), DeWanna Bonner - 13th (1.25)
Assist/Turnover Ratio: Tamela McCorvey - 13th (1.34)
Offensive Rebounds: DeWanna Bonner - 5th (3.25), Jordan Greenleaf - 7th (3.06)
Defensive Rebounds: DeWanna Bonner - 3rd (6.94)

Auburn in the NCAA (Jan. 17 - all games)

Scoring Offense: 38th, 73.1
Scoring Defense: 48th, 57.5
Scoring Margin: 22nd, +15.6
Field Goal Percentage: 49th, .439
Rebounding Margin: 19th, +8.1
Assists: t-43rd, 15.59
Blocks: 20th, 5.12
Steals: 4th, 10.94
Assist/Turnover Ratio: 40th, 0.95

Auburn Players in the NCAA (Jan. 17 - all games)

Scoring: DeWanna Bonner - t-39th (17.6)
Rebounds: DeWanna Bonner - 16th (10.2)

2007 Fall Signees

Chantel Hilliard

6-2 • Forward/Center • Biloxi, Miss. [St. Martin High School]

Hilliard is ranked as the No. 13 prospect among power forwards and No. 64 prospect nationally by Dan Olson's Collegiate Girls Basketball Report after averaging 20.0 points, 10.0 rebounds and 7.0 blocks per game in her junior campaign. The Biloxi, Miss. native helped her St. Martin High School to District titles the past two years. Hilliard was named 2006 MVP of the District while also being named to the Dandy Dozen twice in Mississippi.

Morgan Jennings

5-8 • Guard • Atlanta, Ga. [Frederick Douglass High School]

Jennings is ranked as the No. 17 prospect among guards and No. 83 prospect nationally by Olson's report as she averaged 9.8 points, 5.7 rebounds, 3.5 assists and 3.9 steals per game last season. An Honor Roll Student and three-sport letterwinner at Frederick Douglass High School, Jennings helped her team to the state 5A Final Four as a junior. She was named First Team All-State, All-5A Region and All-City Life/South/Metro Team, in addition to earning the Pitcher's Award in softball last year. Jennings also competed in the high jump (1st in State 05-06), 400m and on the 4x100 and 4x400 relay teams at her high school.

Parrisha Simmons

6-0 • Guard • Macon, Ga. [Southwest Macon High School]

Simmons is ranked as the No. 14 prospect among guards and No. 67 prospect nationally among all positions by Olson. As a junior at Southwest Macon High School, she averaged 17.2 points, 11.5 rebounds, 3.1 assists and 3.0 blocks per game. Over the last three years, Simmons has helped lead her Southwest Macon team to a 73-12 record. Simmons earned All-State honors the last two years and sports a career-high 33 points and 24 rebounds.

Sierra "CeCe" Sims

5-7 • Guard • Brentwood, Tenn. [Brentwood High School]

Sims led her Brentwood High School team to District, Sectional and Regional titles last season and was selected to the All-District and All-Region Tournament teams. As a junior Sims averaged 7.1 points, 5.8 rebounds and 5.2 assists per game. Sims received the "Eye of the Tiger" award, which is given to the all-around best camper, at the Auburn University Women's Basketball Elite Camp in 2007. Sims competed in the Miss Teen Tennessee Pageant last year.



The WBCA's "Think Pink" initiative is a global, unified effort for the Women's Basketball Coaches Association's (WBCA) nation of coaches to assist in raising breast cancer awareness on the court, across campuses, in communities and beyond. The WBCA's "Think

Pink" week will be held February 8 - 17.

Auburn Women's Basketball will "Think Pink" on Sunday, Feb. 17 vs. South Carolina at 2 p.m. CT in Beard-Eaves-Memorial Coliseum.

Auburn Home Game Day Feeds

Auburn will be providing gameday feeds for select home games during the 2007-08 season. The feeds will include game highlights, as well as, interviews with head coach Nell Fortner and selected Auburn players. For more information, contact Steve Sain at 334-844-9809. The "trouble number" is 334-844-9639. Future feeds are as follows:

| | | |
|---------|-----------------------|-----------|
| Jan. 24 | vs. LSU | 9:45 p.m. |
| Feb. 3 | vs. Mississippi State | 5:45 p.m. |
| Feb. 14 | vs. Alabama | 9:45 p.m. |
| Feb. 17 | vs. South Carolina | 5:45 p.m. |
| Mar. 2 | vs. Arkansas | 5:45 p.m. |

C-Band: Galaxy 26, Transponder 14 (downlink frequency is 3980 MHz-H)

Tigers' Record When...

| | |
|-----------------------------------|------|
| Leading at the half | 12-0 |
| Trailing at the half | 0-5 |
| Tied at the half | 0-0 |
| Scores 100+ points | 0-0 |
| Scores 90-99 points | 3-0 |
| Scores 80-89 points | 2-0 |
| Scores 70-79 points | 4-0 |
| Scores 60-69 points | 4-3 |
| Scores fewer than 60 points | 0-1 |
| Holds opp. to 41-50 points | 4-0 |
| Holds opp. to 31-40 points | 2-0 |
| Holds opp. to under 30 points | 0-0 |
| Shoots 50% FG or better | 4-0 |
| Shoots 40-49% FG | 6-0 |
| Shoots 39% or under FG | 3-4 |
| Holds opp. under 30% FG | 4-0 |
| Shoots higher FG% than opp. | 11-0 |
| Shoots lower FG% than opp. | 2-4 |
| Shoots higher FT% than opp. | 7-2 |
| Shoots lower FT% than opp. | 6-2 |
| Outrebounded opp. | 10-2 |
| Outrebounded by opp. | 2-1 |
| Versus ranked opp. | 3-3 |
| In overtime | 0-0 |
| Games decided by 3 points or less | 0-3 |

Auburn in the BEAC

| Season | W-L |
|--------------|---------------|
| 1979-80 | 9-1 |
| 1980-81 | 10-1 |
| 1981-82 | 13-2 |
| 1982-83 | 14-0 |
| 1983-84 | 11-3 |
| 1984-85 | 12-1 |
| 1985-86 | 10-2 |
| 1986-87 | 11-0 |
| 1987-88 | 11-0 |
| 1988-89 | 17-0 |
| 1989-90 | 13-0 |
| 1990-91 | 12-0 |
| 1991-92 | 10-4 |
| 1992-93 | 15-1 |
| 1993-94 | 9-3 |
| 1994-95 | 12-3 |
| 1995-96 | 12-1 |
| 1996-97 | 10-3 |
| 1997-98 | 8-4 |
| 1998-99 | 13-2 |
| 1999-00 | 14-2 |
| 2000-01 | 10-5 |
| 2001-02 | 11-5 |
| 2002-03 | 16-4 |
| 2003-04 | 13-2 |
| 2004-05 | 8-4 |
| 2005-06 | 7-5 |
| 2006-07 | 9-5 |
| 2007-08 | 5-1 |
| Total | 325-64 |

2007-08 Auburn Superlatives...

First Half

| | |
|--|--------------------------------------|
| Most points scored in the first half | .49 vs. Colgate (12/5) |
| Fewest points scored in the first half | .27, twice, last at Tennessee (1/10) |
| Fewest points allowed in the first half | .10 by Colgate (12/5) |
| Most points allowed in the first half | .48 by Tennessee (1/10) |
| Best FG % in the first half | .56.3 vs. Ohio State (11/15) |
| Worst FG % in the first half | .30.8 vs. Davidson (12/28) |
| Best FG % by an opp. in the first half | .56.7 by Saint Joseph's (12/29) |
| Worst FG % by an opp. in the first half | .19.0 by Stephen F. Austin (12/17) |
| Most rebounds in the first half | .34 at Stephen F. Austin (12/17) |
| Fewest rebounds in the first half | .13 vs. UC Riverside (11/30) |
| Most rebounds by an opp. in the first half | .24, twice, last by Tennessee (1/10) |
| Fewest rebounds by an opp. in the first half | .12 by Stephen F. Austin (12/17) |

Second Half

| | |
|---|--------------------------------------|
| Most points scored in the second half | .50, twice, last vs. Colgate (12/5) |
| Fewest points scored in the second half | .25 at Tennessee (1/10) |
| Fewest points allowed in the second half | .18 by Winston-Salem State (11/24) |
| Most points allowed in the second half | .40 by Arizona State (12/2) |
| Best FG % in the second half | .70.4 vs. Colgate (12/5) |
| Worst FG % in the second half | .24.2 at Tennessee (1/10) |
| Best FG % by an opp. in the second half | .57.7, twice |
| Worst FG % by an opp. in the second half | .16.0 by Winston-Salem State (11/24) |
| Most rebounds in the second half | .29 at Oakland (11/21) |
| Fewest rebounds in the second half | .10 vs. Colgate (12/5) |
| Most rebounds by an opp. in the second half | .26 by Tennessee (1/10) |
| Fewest rebounds by an opp. in the second half | .10 by Troy (1/14) |

Game

| | |
|--------------------------------|--------------------------------------|
| Most points scored | .99 vs. Colgate (12/5) |
| Fewest points scored | .52 at Tennessee (1/10) |
| Most points allowed | .85 by Tennessee (1/10) |
| Fewest points allowed | .36 by Sam Houston State (12/19) |
| Best FG % | .58.2 at Sam Houston State (12/19) |
| Worst FG % | .31.7 at Tennessee (1/10) |
| Best FG % by an opponent | .50.0 by Troy (11/14) |
| Worst FG % by an opponent | .23.1 by Winston-Salem State (11/24) |
| Most rebounds | .61 at Stephen F. Austin (12/17) |
| Fewest rebounds | .32 vs. Troy (11/14) |
| Most rebounds by an opponent | .50 by Tennessee (1/10) |
| Fewest rebounds by an opponent | .23 by Sam Houston State (12/19) |

Miscellaneous

| | |
|--------------------------------|---|
| Largest margin of victory | .52 vs. Colgate (12/5) |
| Smallest margin of victory | .6 at Arizona State (12/2) |
| Largest margin of defeat | .33 at Tennessee (1/10) |
| Smallest margin of defeat | .2, three times, last vs. George Washington (1/3) |
| Largest halftime lead | .24 vs. Detroit (11/11) |
| Smallest halftime lead | .5 at Arizona State (12/2) |
| Largest halftime deficit | .21 at Tennessee (1/10) |
| Smallest halftime deficit | .2 vs. Davidson (12/28) |
| Largest rebounding margin | .31 at Stephen F. Austin (12/17) |
| Smallest rebounding margin | .1 vs. Ohio State (11/25) |
| Opponent's largest reb. margin | .12 by Tennessee (1/10) |
| Opponents smallest reb. margin | .1 by Arizona State (12/2) |

The Last Time ...

... an Auburn Team

| | |
|-----------------------------|--|
| scored 100 points | Auburn 103, Northwestern State 52 (Dec. 30, 2003) |
| scored 100 points at Auburn | Auburn 103, Northwestern State 52 (Dec. 30, 2003) |
| scored 100 points and lost | Never |
| scored 110 points | Auburn 110, Texas Southern 38 (Dec. 20, 1994) |
| scored 115 points | Auburn 116, Alabama State 56 (Dec. 2, 1986) |
| had 25 + rebound margin | 31 - Auburn 61, Stephen F. Austin 30 (Nov. 17, 2007) |
| had 20 + rebound margin | 31 - Auburn 61, Stephen F. Austin 30 (Nov. 17, 2007) |
| | 21 - Auburn 44, Sam Houston State 23 (Dec. 19, 2007) |
| attempted 35 free throws | 35 - vs. UAB (Nov. 17, 2007) |
| | 38 - at Nevada (Dec. 1, 2006) |
| made 30 free throws | 31 - vs. Northwestern State (31-43) (Dec. 30, 2003) |
| had 25 assists | 28 - at Sam Houston State (Dec. 19, 2007) |
| had 25 turnovers | 28 - at Stephen F. Austin (Dec. 17, 2007) |
| | 25 - at Sam Houston State (Dec. 19, 2007) |
| had 25 steals | 25 - vs. Ark.-Little Rock (Dec. 2, 2000) |
| scored 25 points or less | 25 - vs. Mercer (1971) |

... an Auburn Player

| | |
|--------------------------|--|
| scored 40 points | 41 - Conswella Sparrow vs. South Alabama (Feb. 17, 1998) |
| scored 30 points | 31 - DeWanna Bonner vs. UAB (Nov. 17, 2007) |
| | 32 - Natasha Brackett at Alabama (Feb. 17, 2005) |
| attempted 25 field goals | 25 - Natasha Brackett (9-25) at LSU (Jan. 30, 2005) |
| recorded a double double | DeWanna Bonner (21 pts./13 rbs.) vs. Georgis (Jan. 13, 2008) |
| recorded a triple double | Marita Payne (15 pts./12 rbs./13 blocks) vs. Arkansas (Feb. 3, 2005) |
| had 10 assists | 10 - Tamela McCorvey at Sam Houston State (Dec. 19, 2007) |
| | 10 - Whitney Boddie at Arizona State (Dec. 2, 2007) |
| | 12 - Whitney Boddie vs. Alabama (Feb. 1, 2007) |
| had 10 blocks | 13 - Marita Payne vs. Arkansas (Feb. 3, 2005) |
| had 15 rebounds | 19 - DeWanna Bonner at Saint Joseph's (Dec. 29, 2007) |
| had 20 rebounds | 20 - Monique Morehouse at LSU (Feb. 4, 1995) |
| made 15 field goals | 15 - Conswella Sparrow (15-16) vs. USA (Feb. 17, 1998) |
| had 16 assists | 18 - Martha Monk vs. Alabama State (Feb. 18, 1981) |
| made 15 field goals | 15 - Conswella Sparrow (15-16) vs. USA (Feb. 17, 1998) |
| had 16 assists | 18 - Martha Monk vs. Alabama State (Feb. 18, 1981) |

... an Auburn Opponent

| | |
|-----------------------------|--|
| scored 100 points | Georgia 102, Auburn 72 at Athens, Ga. (Mar. 3, 1984) |
| scored 100 points at Auburn | Tuskegee 105, Auburn 98 (2OT) (Feb. 12, 1979) |
| scored 100 points and lost | Never |
| scored 110 points | Never |
| scored 115 points | Never |
| had 25 + rebound margin | Never |
| had 20 + rebound margin | 23 - Vanderbilt 47, Auburn 24 (March 1, 2002) |
| attempted 35 free throws | 36 - by Arizona (25-36) (Dec. 19, 2000) |
| made 30 free throws | 30 - by Arkansas (Jan. 22, 1995) |
| had 25 turnovers | 25 - by Alabama (Jan. 26, 2006) |
| had 20 steals | Never |
| scored 25 points or less | 25 - by UPR-Mayaguez (Dec. 17, 2000) |
| scored 11 points or less | 11 - by Montevallo (1973) |
| | 11 - by Jeff Davis (1973) |

... an Auburn Opponent's Player

| | |
|--------------------------|---|
| scored 30 points | 30 - Carmen Guzman of UAB (March 18, 2007) |
| attempted 25 field goals | 26 - Diamond Cosby (7-26) of Northwestern St. (Dec. 30, 2003) |
| recorded a double double | Nicky Anoski (20 pts./12 rbs.) of Tennessee (Jan. 10, 2008) |
| | Candace Parker (18 pts./11 rbs.) of Tennessee (Jan. 10, 2008) |
| recorded a triple double | Never |
| had 10 assists | 10 - Brittney Vaughn of Arkansas (Jan. 14, 2007) |
| had 10 blocks | Never |
| had 15 rebounds | 17 - Jantel Lavdender of Ohio State (Nov. 25, 2007) |
| | 17 - Jones of Louisiana-Lafayette (Dec. 17, 2005) |
| had 20 rebounds | 20 - Sylvia Fowles of LSU (Jan. 28, 2007) |
| made 15 field goals | 15 - Chamique Holdsclaw (15-21) of Tennessee (Feb. 1, 1998) |
| had 16 assists | 16 - M'Mahan of UAB (Nov. 24, 1980) |
| made 15 field goals | 15 - Chamique Holdsclaw (15-21) of Tennessee (Feb. 1, 1998) |
| had 16 assists | 16 - M'Mahan of UAB (Nov. 24, 1980) |

2007-08 Scoring Breakdown

(percentage of total points in parathesis)

| Opponent | Front Court | Back Court | Sr. | Jr. | So. | Fr. | Starters | Bench |
|--------------------------------|-------------------|-------------------|------------|------------|-----------|------------|-------------------|-------------------|
| Detroit (Nov. 11) | 18 (19.8) | 73 (80.2) | 20 | 49 | 2 | 20 | 67 (73.6) | 24 (26.4) |
| Troy (Nov. 14) | 18 (23.3) | 59 (76.7) | 11 | 50 | 8 | 8 | 61 (79.2) | 16 (20.8) |
| UAB (Nov. 17) | 17 (18.3) | 76 (81.7) | 5 | 61 | 3 | 24 | 59 (63.4) | 34 (36.6) |
| at Oakland (Nov. 21) | 8 (11.3) | 63 (88.2) | 6 | 51 | 8 | 6 | 61 (85.9) | 10 (14.1) |
| vs. WSSU (Nov. 24) | 24 (34.3) | 46 (65.7) | 11 | 35 | 4 | 20 | 45 (64.3) | 25 (35.7) |
| vs. Ohio State (Nov. 25) | 10 (14.9) | 57 (85.1) | 0 | 63 | 4 | 0 | 61 (91.0) | 6 (9.0) |
| vs. UC Riverside (Nov.30) | 18 (28.1) | 46 (71.9) | 14 | 25 | 6 | 19 | 41(64.1) | 23 (35.9) |
| at Arizona State (Dec. 2) | 4 (5.4) | 71 (94.6) | 16 | 62 | 4 | 9 | 66 (88.0) | 9 (12.0) |
| vs. Colgate (Dec. 5) | 17 (17.2) | 82 (82.8) | 12 | 40 | 5 | 42 | 45 (45.5) | 54 (54.5) |
| at Texas A&M (Dec. 15) | 19 (31.7) | 41 (68.3) | 8 | 37 | 13 | 2 | 54 (90.0) | 6 (10.0) |
| at Stephen F. Austin (Dec. 17) | 26 (42.6) | 35 (57.4) | 2 | 29 | 10 | 20 | 31 (50.8) | 30 (49.2) |
| at Sam Houston St. (Dec. 19) | 17 (21.1) | 63 (78.8) | 13 | 33 | 10 | 24 | 48 (60.0) | 32 (40.0) |
| vs. Davidson (Dec. 28) | 17 (25.8) | 49 (74.2) | 21 | 23 | 7 | 15 | 43 (65.1) | 23 (34.9) |
| at Saint Joseph's (Dec. 29) | 6 (8.7) | 63 (91.3) | 10 | 44 | 2 | 13 | 63 (91.3) | 6 (8.7) |
| vs. George Washington (Jan. 3) | 14 (21.2) | 52 (78.2) | 9 | 33 | 6 | 18 | 58 (87.9) | 8 (12.1) |
| at Tennessee (Jan. 10) | 30 (57.7) | 22 (42.3) | 6 | 39 | 0 | 7 | 41 (78.8) | 11 (21.2) |
| vs. Georgia (Jan. 13) | 40 (48.8) | 42 (51.2) | 12 | 45 | 7 | 17 | 65 (79.3) | 17 (20.7) |
| TOTAL | 303 (24.4) | 940 (75.6) | 176 | 719 | 99 | 264 | 909 (73.1) | 334 (26.9) |

2007-08 Lead-Deficit Comparison

| Opponent | Largest Lead | Largest Deficit | Lead Changes | Ties | Result |
|--------------------------------|-----------------|-----------------|--------------|------|----------|
| Detroit (Nov. 11) | 44 (2nd, 00:24) | N/A | 0 | 1 | W, 91-47 |
| Troy (Nov. 14) | 21 (2nd, 13:09) | N/A | 0 | 2 | W, 77-61 |
| UAB (Nov. 17) | 27 (2nd, 00:40) | 1 (1st, 15:59) | 4 | 2 | W, 93-66 |
| at Oakland (Nov. 21) | 8 (2nd, 00:16) | 6 (2nd, 8:57) | 8 | 7 | W, 71-63 |
| vs. WSSU (Nov. 24) | 36 (2nd, 00:57) | N/A | 0 | 0 | W, 70-37 |
| vs. Ohio St. (Nov. 25) | 16 (1st, 6:44) | N/A | 0 | 2 | W, 67-58 |
| vs. UC Riverside (Nov. 30) | 26 (2nd, 7:37) | N/A | 0 | 1 | W, 64-47 |
| at Arizona State (Dec. 2) | 9 (1st, 2:55) | 6 (2nd, 6:57) | 4 | 3 | W, 75-69 |
| vs. Colgate (Dec. 5) | 58 (2nd, 12:37) | N/A | 0 | 0 | W, 99-47 |
| at Texas A&M (Dec. 15) | 6 (1st, 13:41) | 14 (1st, 3:10) | 1 | 3 | L, 60-62 |
| at Stephen F. Austin (Dec. 17) | 20 (2nd, 4:58) | 2 (1st, 14:42) | 1 | 4 | W, 61-49 |
| at Sam Houston State (Dec. 19) | 44 (2nd, 00:05) | 1 (1st, 17:39) | 2 | 2 | W, 80-36 |
| vs. Davidson (Dec. 28) | 9 (2nd, 05:11) | 8 (1st, 5:28) | 2 | 5 | W, 66-59 |
| at Saint Joseph's (Dec. 29) | 4 (1st, 18:40) | 16 (2nd, 9:59) | 1 | 2 | L, 69-71 |
| vs. George Washington (Jan. 3) | 2 (2nd, 4:56) | 11 (2nd, 16:19) | 6 | 2 | L, 66-68 |
| at Tennessee (Jan. 10) | 6 (1st, 18:16) | 37 (2nd, 5:51) | 1 | 1 | L, 52-85 |
| vs. Georgia (Jan. 13) | 34 (2nd, 3:47) | N/A | 0 | 0 | W, 82-52 |

Specialty Statistics (Auburn-Opponent)

| Opponent | Bench Points | Points in the Paint | Points off Turnovers | 2nd Chance Points | Fast Break Points |
|--------------------------------|----------------|---------------------|----------------------|-------------------|-------------------|
| Detroit (Nov. 11) | 24-20 | 50-22 | 41-9 | 14-0 | 19-2 |
| Troy (Nov. 14) | 16-2 | 48-24 | 27-12 | 9-5 | 10-0 |
| UAB (Nov. 17) | 34-3 | 44-26 | 26-19 | 17-1 | 14-2 |
| at Oakland (Nov. 21) | 10-14 | 28-30 | 10-12 | 21-8 | 2-8 |
| vs. WSSU (Nov. 24) | 25-16 | 34-10 | 28-17 | 15-7 | 14-0 |
| vs. Ohio State (Nov. 25) | 6-12 | 26-36 | 23-8 | 9-10 | 6-8 |
| vs. UC Riverside (Nov. 30) | 23-10 | 28-24 | 21-13 | 4-19 | 2-0 |
| at Arizona State (Dec. 2) | 9-4 | 28-18 | 8-5 | 7-6 | 2-0 |
| vs. Colgate (Dec. 5) | 54-28 | 36-22 | 38-9 | 14-14 | 16-0 |
| at Texas A&M (Dec. 15) | 6-17 | 26-34 | 15-16 | 18-10 | 11-6 |
| at Stephen F. Austin (Dec. 17) | 30-1 | 32-16 | 16-22 | 23-2 | 4-6 |
| at Sam Houston St. (Dec. 19) | 32-7 | 44-10 | 28-9 | 12-6 | 12-0 |
| vs. Davidson (Dec. 28) | 23-21 | 38-28 | 23-8 | 17-7 | 12-4 |
| at Saint Joseph's (Dec. 29) | 6-16 | 30-30 | 11-13 | 19-7 | 8-6 |
| vs. G. Washington (Jan. 3) | 8-9 | 28-28 | 15-12 | 23-10 | 2-2 |
| at Tennessee (Jan. 10) | 11-25 | 18-34 | 8-33 | 8-22 | 6-12 |
| vs. Georgia (Jan. 13) | 17-13 | 30-22 | 18-9 | 14-9 | 10-4 |
| TOTAL | 334-229 | 568-414 | 356-236 | 243-143 | 152-60 |

2007-08 Points-Rebounds-Assists

| Opponent | Boddie | Bonner | Greenleaf | S. Hobbs | Jackson | Ketcham | McCorvey | Moore | Ogubie | Pickard | Smalley | Wallace |
|--------------------------------|---------|---------|-----------|----------|---------|---------|----------|-------|--------|---------|---------|---------|
| Detroit (Nov. 11) | 10-8-6 | 16-10-3 | DNP | 13-6-4 | 10-10-1 | 4-1-1 | 18-3-4 | 4-4-0 | 2-3-2 | 2-2-0 | 12-2-2 | 0-1-0 |
| Troy (Nov. 14) | 16-7-7 | 17-7-3 | 8-0-0 | 7-6-1 | 10-4-0 | DNP | 11-1-1 | 0-1-0 | DNP | DNP | 8-3-6 | 0-0-0 |
| UAB (Nov. 17) | 10-4-9 | 31-12-3 | 3-9-2 | 12-4-3 | 8-4-1 | 0-0-0 | 3-0-1 | 4-0-0 | 2-1-1 | DNP | 20-2-1 | DNP |
| at Oakland (Nov. 21) | 19-10-4 | 22-12-1 | 8-12-2 | 6-4-2 | 4-5-0 | DNP | 6-3-2 | DNP | 0-0-0 | DNP | 6-1-2 | 0-0-0 |
| vs. WSSU (Nov. 24) | 13-9-2 | DNP | 4-6-0 | 13-8-2 | 9-7-0 | 2-1-1 | 6-2-2 | 6-3-0 | 2-0-0 | 0-1-0 | 12-3-4 | 3-7-0 |
| vs. Ohio St. (Nov. 25) | 20-10-7 | 16-6-1 | 4-2-1 | 21-7-1 | 6-8-1 | DNP | 0-2-2 | DNP | DNP | DNP | 0-1-1 | DNP |
| vs. UC Riverside (Nov.30) | 4-2-6 | 9-12-3 | 6-2-1 | 8-6-3 | 4-1-2 | 0-0-1 | 14-3-2 | 8-2-0 | 0-0-0 | 0-2-0 | 11-1-2 | 0-3-0 |
| at Arizona State (Dec. 2) | 7-8-10 | 13-13-3 | 4-4-1 | 26-4-1 | 0-1-0 | DNP | 16-1-2 | 0-1-0 | DNP | DNP | 9-1-2 | DNP |
| vs. Colgate (Dec. 5) | 6-5-8 | 14-5-0 | 5-2-0 | 13-4-3 | 7-4-0 | 26-1-2 | 7-4-1 | DNP | 5-3-0 | 0-4-0 | 16-1-3 | 0-2-0 |
| at Texas A&M (Dec. 15) | 12-6-5 | 10-5-2 | 13-9-0 | 11-7-1 | 4-3-0 | DNP | 8-2-3 | 2-1-0 | DNP | DNP | 0-1-0 | 0-0-0 |
| at Stephen F. Austin (Dec. 17) | 0-1-0 | 17-17-1 | 10-6-2 | 2-4-1 | 10-4-0 | 0-1-1 | 2-4-1 | 6-6-0 | 0-2-0 | 0-0-0 | 14-8-2 | 0-2-0 |
| at Sam Houston St. (Dec. 19) | DNP | 24-3-0 | 8-4-1 | 7-9-6 | 2-6-1 | 9-1-2 | 7-9-10 | 3-3-0 | 4-2-3 | 2-2-1 | 12-2-3 | 2-2-1 |
| vs. Davidson (Dec. 28) | DNP | 9-12-1 | 7-7-1 | 12-7-3 | 2-5-0 | DNP | 13-3-6 | 0-1-0 | 8-2-0 | DNP | 15-2-3 | 0-0-0 |
| at Saint Joseph's (Dec. 29) | DNP | 30-19-3 | 0-10-0 | 12-3-3 | 2-1-0 | DNP | 8-3-4 | 0-1-0 | 2-1-0 | 2-1-0 | 13-3-2 | DNP |
| vs. G. Washington (Jan.3) | DNP | 14-12-1 | 6-4-0 | 12-3-1 | 7-3-2 | 0-0-0 | 9-5-4 | 1-4-0 | DNP | DNP | 17-9-5 | DNP |
| at Tennessee (Jan. 10) | DNP | 19-5-0 | 0-6-0 | 12-6-0 | 8-7-0 | DNP | 6-1-1 | 3-1-0 | 0-0-0 | DNP | 4-6-4 | DNP |
| vs. Georgia (Jan. 13) | DNP | 21-13-2 | 7-5-2 | 12-4-3 | 12-3-2 | 5-0-0 | 12-6-2 | 0-0-0 | 0-0-0 | DNP | 13-4-5 | DNP |

2007-08 Game-by-Game Statistics

| | DATE | FG | FGA | PCT | 3P | 3PA | PCT | FT | FTA | PCT | REB | PF | A | TO | BS | ST | PTS |
|-------------------|---------|----|-----|------|----|-----|------|----|-----|------|-----|----|----|----|----|----|-----|
| AUBURN | Nov. 11 | 35 | 73 | .479 | 8 | 17 | .471 | 13 | 18 | .722 | 51 | 9 | 23 | 19 | 5 | 20 | 91 |
| Detroit | | 19 | 59 | .322 | 6 | 22 | .273 | 3 | 3 | 1.00 | 28 | 14 | 16 | 28 | 1 | 5 | 47 |
| AUBURN | Nov. 14 | 32 | 62 | .516 | 4 | 11 | .364 | 9 | 11 | .818 | 32 | 10 | 18 | 14 | 4 | 12 | 77 |
| Troy | | 25 | 50 | .500 | 8 | 15 | .533 | 3 | 6 | .500 | 26 | 13 | 16 | 24 | 0 | 5 | 61 |
| AUBURN | Nov. 17 | 32 | 61 | .525 | 5 | 13 | .385 | 24 | 38 | .632 | 43 | 18 | 20 | 21 | 3 | 13 | 93 |
| UAB | | 24 | 55 | .436 | 5 | 19 | .263 | 13 | 15 | .867 | 27 | 26 | 10 | 27 | 3 | 5 | 66 |
| Oakland | Nov. 21 | 26 | 68 | .382 | 4 | 18 | .222 | 7 | 11 | .636 | 44 | 19 | 17 | 14 | 3 | 5 | 63 |
| AUBURN | | 26 | 70 | .371 | 3 | 15 | .200 | 16 | 27 | .593 | 53 | 12 | 13 | 12 | 8 | 5 | 71 |
| AUBURN | Nov. 24 | 23 | 59 | .390 | 2 | 12 | .167 | 22 | 29 | .659 | 48 | 18 | 11 | 24 | 5 | 12 | 70 |
| WSSU | | 12 | 52 | .231 | 5 | 24 | .208 | 8 | 11 | .727 | 32 | 22 | 5 | 31 | 0 | 12 | 37 |
| Ohio State | Nov. 25 | 25 | 58 | .431 | 0 | 10 | .000 | 8 | 16 | .500 | 37 | 15 | 12 | 14 | 1 | 6 | 58 |
| AUBURN | | 26 | 60 | .433 | 2 | 5 | .400 | 13 | 21 | .619 | 38 | 13 | 14 | 12 | 0 | 6 | 67 |
| UC Riverside | Nov. 30 | 17 | 58 | .293 | 1 | 16 | .063 | 12 | 19 | .632 | 44 | 16 | 9 | 19 | 7 | 9 | 47 |
| AUBURN | | 26 | 57 | .456 | 4 | 11 | .364 | 8 | 14 | .571 | 38 | 19 | 20 | 17 | 8 | 10 | 64 |
| Arizona State | Dec. 2 | 25 | 54 | .463 | 5 | 14 | .357 | 14 | 20 | .700 | 36 | 15 | 19 | 14 | 1 | 4 | 69 |
| AUBURN | | 30 | 66 | .455 | 6 | 12 | .500 | 9 | 13 | .692 | 35 | 17 | 19 | 11 | 2 | 9 | 75 |
| AUBURN | Dec. 5 | 38 | 66 | .576 | 12 | 17 | .706 | 11 | 16 | .688 | 33 | 9 | 20 | 9 | 6 | 17 | 99 |
| Colgate | | 18 | 52 | .346 | 3 | 12 | .250 | 8 | 9 | .889 | 33 | 16 | 9 | 26 | 2 | 2 | 47 |
| Texas A&M | Dec. 15 | 25 | 60 | .417 | 4 | 10 | .400 | 8 | 12 | .667 | 37 | 15 | 12 | 17 | 8 | 6 | 62 |
| AUBURN | | 22 | 57 | .386 | 4 | 10 | .400 | 12 | 14 | .857 | 37 | 17 | 11 | 16 | 7 | 8 | 60 |
| Stephen F. Austin | Dec. 17 | 15 | 57 | .263 | 3 | 18 | .167 | 16 | 22 | .727 | 30 | 16 | 6 | 16 | 2 | 13 | 49 |
| AUBURN | | 25 | 67 | .373 | 2 | 15 | .133 | 9 | 12 | .750 | 61 | 25 | 8 | 28 | 8 | 8 | 61 |
| Sam Houston St. | Dec. 19 | 13 | 54 | .241 | 3 | 15 | .200 | 7 | 7 | 1.00 | 23 | 16 | 36 | 12 | 29 | 0 | 11 |
| AUBURN | | 32 | 55 | .582 | 2 | 7 | .286 | 14 | 20 | .700 | 44 | 11 | 80 | 28 | 25 | 6 | 20 |
| AUBURN | Dec. 28 | 27 | 65 | .415 | 2 | 11 | .182 | 10 | 17 | .588 | 42 | 11 | 14 | 14 | 8 | 15 | 66 |
| Davidson | | 25 | 63 | .397 | 5 | 17 | .294 | 4 | 9 | .444 | 39 | 16 | 17 | 20 | 1 | 5 | 59 |
| Saint Joseph's | Dec. 29 | 28 | 59 | .475 | 10 | 15 | .667 | 5 | 9 | .556 | 34 | 17 | 24 | 11 | 58 | 3 | 71 |
| AUBURN | | 25 | 69 | .362 | 5 | 17 | .294 | 14 | 20 | .700 | 45 | 13 | 12 | 10 | 4 | 6 | 69 |
| AUBURN | Jan. 3 | 22 | 59 | .373 | 4 | 11 | .364 | 18 | 28 | .643 | 41 | 12 | 13 | 14 | 7 | 7 | 66 |
| George Washington | | 26 | 53 | .491 | 9 | 11 | .467 | 9 | 11 | .818 | 31 | 21 | 16 | 16 | 4 | 7 | 68 |
| Tennessee | Jan. 10 | 32 | 73 | .438 | 9 | 21 | .429 | 12 | 17 | .706 | 50 | 17 | 19 | 14 | 12 | 15 | 85 |
| AUBURN | | 19 | 60 | .317 | 2 | 5 | .400 | 12 | 21 | .571 | 38 | 12 | 5 | 21 | 2 | 9 | 52 |
| AUBURN | Jan. 13 | 28 | 61 | .459 | 6 | 10 | .600 | 20 | 23 | .870 | 41 | 11 | 16 | 11 | 4 | 9 | 82 |
| Georgia | | 17 | 56 | .304 | 3 | 12 | .250 | 15 | 17 | .882 | 32 | 17 | 5 | 16 | 4 | 3 | 52 |

2007-08 Auburn Individual Superlatives

| | | | |
|-----------------------------------|--------------|------------------|--|
| Points | 31 | DeWanna Bonner | Nov. 17 vs. UAB |
| Field Goals Made | 11 | Sherell Hobbs | Dec. 2 at Arizona State |
| | 10 | DeWanna Bonner | three times, last Dec. 19 at Sam Houston State |
| | | Ruth Ketcham | Dec. 5 vs. Colgate |
| Field Goal Attempts | 21 | DeWanna Bonner | Dec. 29 at Saint Joseph's |
| Field Goal Pct. (min 5 made) | 10-12 (.833) | DeWanna Bonner | Dec. 19 at Sam Houston State |
| | 8-10 (.800) | Alli Smalley | Nov. 17 vs. UAB |
| 3-PT Field Goals Made | 6 | Ruth Ketcham | Dec. 5 vs. Colgate |
| | 4 | Tamela McCorvey | Dec. 2 at Arizona State |
| | | Alli Smalley | Nov. 17 vs. UAB |
| | | Tamela McCorvey | Nov. 11 vs. Detroit |
| 3-PT Field Goal Attempts | 9 | Alli Smalley | Dec. 29 at Saint Joseph's |
| 3-PT Field Goal Pct. (min 2 made) | 6-8 (.750) | Ruth Ketcham | Dec. 5 vs. Colgate |
| | 3-4 (.750) | Alli Smalley | Dec. 5 vs. Colgate |
| Free Throws Made | 11 | DeWanna Bonner | twice, last Dec. 29 at Saint Joseph's |
| Free Throw Attempts | 16 | DeWanna Bonner | Dec. 29 at Saint Joseph's |
| Free Throw Pct. (min 4 made) | 6-6 (1.000) | DeWanna Bonner | Nov. 11 vs. Detroit |
| Rebounds | 19 | DeWanna Bonner | Dec. 29 at Saint Joseph's |
| Assists | 10 | Tamela McCorvey | Dec. 19 at Sam Houston State |
| | 10 | Whitney Boddie | Dec. 2 at Arizona State |
| Steals | 6 | Whitney Boddie | Nov. 11 vs. Detroit |
| Blocked Shots | 5 | Jordan Greenleaf | Dec. 15 at Texas A&M |
| | 4 | Jordan Greenleaf | Dec. 17 at Stephen F. Austin |
| | | Cassie Moore | Dec. 17 at Stephen F. Austin |
| | | DeWanna Bonner | Nov. 21 at Oakland |

2007-08 Team Highs and Lows

| CATEGORY | | AUBURN | OPPONENT |
|---------------------|-----|---------------------------|-------------------------|
| Points | Hi | 99 vs. Colgate | 85 by Tennessee |
| | Low | 52 at Tennessee | 36 by Sam Houston State |
| Field Goals | Hi | 38 vs. Colgate | 32 by Tennessee |
| | Low | 19 at Tennessee | 12 by WSSU |
| Field Goal Att. | Hi | 73 vs. Detroit | 73 by Tennessee |
| | Low | 55 at Sam Houston State | 50 by Troy |
| Field Goal Pct. | Hi | .582 at Sam Houston State | .500 by Troy |
| | Low | .317 at Tennessee | .231 by WSSU |
| 3PT Field Goals | Hi | 12 vs. Colgate | 10 by Saint Joseph's |
| | Low | 2, six times | 0 by Ohio State |
| 3PT Field Goal Att. | Hi | 17, three times | 24 by WSSU |
| | Low | 5, twice | 10 by Ohio State |
| 3PT Field Goal Pct. | Hi | .706 vs. Colgate | .667 by Saint Joseph's |
| | Low | .133 at Stephen F. Austin | .000 by Ohio State |
| Free Throws | Hi | 24 vs. UAB | 16 at Stephen F. Austin |
| | Low | 8 vs. UC Riverside | 3 by Detroit |
| Free Throw Att. | Hi | 38 vs. UAB | 22 at Stephen F. Austin |
| | Low | 11 vs. Troy | 3 by Detroit |
| Free Throw Pct. | Hi | .870 vs. Georgia | 100.0 by Detroit |
| | Low | .571, twice | .400 by Texas A&M |
| Rebounds | Hi | 61 at Stephen F. Austin | 50 by Tennessee |
| | Low | 32 vs. Troy | 23 by Sam Houston State |
| Assists | Hi | 23 vs. Detroit | 24 by Saint Joseph's |
| | Low | 5 at Tennessee | 5, twice |
| Blocks | Hi | 8, four times | 8 by Texas A&M |
| | Low | 0 vs. Ohio State | 0, twice |
| Steals | Hi | 20, twice | 15 by Tennessee |
| | Low | 5 at Oakland | 2 by Colgate |
| Turnovers | Hi | 28 at Stephen F. Austin | 31 by WSSU |
| | Low | 9 vs. Colgate | 11 by Saint Joseph's |

Charting the Tigers

CAREER RECORDS

Points

| Rk | Player | Years | Points |
|-----------|-----------------------|---------------|--------------|
| 1 | Becky Jackson | .80-84 | 2,068 |
| 2 | Vickie Orr | .85-89 | 2,035 |
| 3 | Marianne Merritt | .75-79 | 1,979 |
| 4 | Carolyn Jones | .88-91 | 1,831 |
| 5 | Natasha Brackett | .01-05 | 1,716 |
| 6 | Mae Ola Bolton | .84-88 | 1,616 |
| 7 | Angie Hannah | .78-82 | 1,583 |
| 8 | Le'Coë Willingham | .99-00, 01-03 | 1,475 |
| 9 | Lori Monroe | .79-83 | 1,415 |
| 10 | Tasha Hamilton | .97-01 | 1,402 |
| 11 | Linda Godby | .86-90 | 1,365 |
| 12 | Debra Larkin | .81-85 | 1,310 |
| 13 | C. C. Hayden | .89-92 | 1,306 |
| 14 | Conswella Sparrow | .97-00 | 1,249 |
| 15 | Brenda Hill | .81-85 | 1,222 |
| 16 | M. Morehouse | .92-96 | 1,191 |
| 17 | Lauretta Freeman | .89-93 | 1,188 |
| 18 | Sharon Stewart | .84-88 | 1,184 |
| 19 | Ruthie Bolton | .85-89 | 1,176 |
| 20 | DeWanna Bonner | .05-07 | 1,157 |
| 21 | Tiffany Krantz | .96-00 | 1,136 |
| 22 | Samantha Williams | .92-96 | 1,106 |
| 23 | Helene Baroody | .83-87 | 1,011 |
| 24 | Tara Williams | .95-97 | 988 |
| 25 | Diann McNeil | .84-88 | 982 |
| 26 | Laticia Morris | .95-97 | 971 |
| 27 | Charlene Thomas | .83-87 | 963 |
| 28 | Kristen Mulligan | .92-96 | 944 |
| 29 | Nicole Louden | .01-05 | 843 |
| 30 | Renae Halbrooks | .78-82 | 832 |

Rebounds

| Rk | Player | Years | Points |
|-----------|-----------------------|---------------|------------|
| 1 | Becky Jackson | .80-84 | 1,118 |
| 2 | Lori Monroe | .79-83 | 1,015 |
| 3 | Vickie Orr | .85-89 | 1,006 |
| 4 | Lauretta Freeman | .89-93 | 976 |
| 5 | Marianne Merritt | .75-79 | 972 |
| 6 | Le'Coë Willingham | .99-00, 01-03 | 927 |
| 7 | M. Morehouse | .92-96 | 792 |
| 8 | Charlene Thomas | .84-87 | 761 |
| 9 | Sharon Stewart | .84-88 | 757 |
| 10 | C.C.Hayden | .89-92 | 749 |
| 11 | Kendall Mago | .88-92 | 749 |
| 12 | Tasha Hamilton | .97-01 | 663 |
| 13 | Mae Ola Bolton | .84-88 | 653 |
| 14 | Marita Payne | .02-06 | 630 |
| 15 | DeWanna Bonner | .05-07 | 610 |
| 16 | Brenda Hill | .82-85 | 604 |
| 17 | Angie Hannah | .78-82 | 588 |
| | Linda Godby | .86-90 | 580 |
| 19 | Conswella Sparrow | .97-00 | 572 |
| 20 | Tara Williams | .95-97 | 539 |

Scoring Average (30 games)

| Rk | Player | Years | PPG |
|----|------------------|--------|------|
| 1 | Marianne Merritt | .75-79 | 20.4 |
| 2 | Carolyn Jones | .88-91 | 18.3 |

| | | | |
|----------|-----------------------|---------------|-------------|
| 3 | Becky Jackson | .80-84 | 17.8 |
| 4 | Vickie Orr | .85-89 | 15.5 |
| 5 | DeWanna Bonner | .05-07 | 15.0 |
| 6 | Conswella Sparrow | .97-00 | 14.5 |
| 7 | Natasha Brackett | .01-05 | 14.0 |
| 8 | C.C. Hayden | .89-92 | 13.6 |
| 9 | Angie Hannah | .78-82 | 13.3 |
| | Brenda Hill | .81-85 | 13.3 |

Rebounding Avg. (30 games)

| Rk | Player | Years | RPG |
|----------|-----------------------|---------------|------------|
| 1 | Marianne Merritt | .75-79 | 10.0 |
| 2 | Becky Jackson | .80-84 | 9.6 |
| 3 | Lauretta Freeman | .89-93 | 8.0 |
| 4 | DeWanna Bonner | .05-07 | 7.9 |
| | Lori Monroe | .79-83 | 7.9 |
| 6 | C.C. Hayden | .89-92 | 7.8 |
| 7 | Vickie Orr | .85-89 | 7.7 |
| | Le'Coë Willingham | .99-00, 01-03 | 7.7 |
| 9 | Mae Ola Bolton | .84-88 | 6.8 |
| 10 | M. Morehouse | .92-96 | 6.8 |

3-Pt Field Goals

| Rk | Player | Years | 3FG |
|----------|------------------------|---------------|-----------|
| 1 | Tiffany Krantz | .96-00 | 184 |
| 2 | Natasha Brackett | .01-05 | 171 |
| 3 | Samantha Williams | .92-96 | 161 |
| 4 | Kristen Mulligan | .92-96 | 149 |
| 5 | Carolyn Jones | .88-91 | 103 |
| 6 | Shana Askew | .97-01 | 94 |
| 7 | Lynn Stevenson | .87-91 | 83 |
| 8 | Tamela McCorvey | .06-07 | 78 |
| 9 | Joanna Clayden | .05-07 | 62 |
| 10 | LaRita Spencer | .99-01 | 59 |

3-Pt Field Goal Attempts

| Rk | Player | Years | ATT |
|----------|------------------------|---------------|------------|
| 1 | Natasha Brackett | .01-05 | 545 |
| 2 | Tiffany Krantz | .96-00 | 520 |
| 3 | Samantha Williams | .92-96 | 500 |
| 4 | Kristen Mulligan | .92-96 | 370 |
| 5 | Shana Askew | .97-01 | 332 |
| 6 | Nitasha Brown | .02-06 | 271 |
| 7 | Carolyn Jones | .88-91 | 248 |
| 8 | Tamela McCorvey | .06-07 | 234 |
| 9 | Lynn Stevenson | .86-91 | 221 |
| 10 | Joanna Clayden | .05-07 | 184 |

3Pt Field Goals Pct. (100 Att.)

| Rk | Player | Years | Pct. |
|----------|------------------------|---------------|----------------------|
| 1 | Carolyn Jones | .88-91 | .415 (103-248) |
| 2 | Kristen Mulligan | .92-96 | .403 (149-370) |
| 3 | Suzette Sargeant | .90-92 | .388 (57-147) |
| 4 | Lynn Stevenson | .86-91 | .376 (83-221) |
| 5 | LaRita Spencer | .99-01 | .364 (59-162) |
| 6 | Louise Emeagi | .02-05 | .359 (78-217) |
| 7 | Tiffany Krantz | .96-00 | .354 (184-520) |
| 8 | Joanna Clayden | .05-07 | .337 (62-184) |
| 9 | Tamela McCorvey | .06-07 | .333 (78-234) |
| 10 | Samantha Williams | .92-96 | .322 (161-500) |

Free Throws

| Rk | Player | Years | FT |
|----------|-----------------------|---------------|------------|
| 1 | Carolyn Jones | .88-91 | 438 |
| 2 | Conswella Sparrow | .97-00 | 346 |
| | Le'Coë Willingham | .99-04 | 346 |
| 4 | Becky Jackson | .80-84 | 340 |
| 5 | Vickie Orr | .85-89 | 307 |
| 6 | Marianne Merritt | .75-79 | 305 |
| 7 | Tasha Hamilton | .97-01 | 296 |
| 8 | Lori Monroe | .79-83 | 291 |
| 9 | DeWanna Bonner | .05-07 | 288 |
| 10 | Debra Larkin | .81-85 | 278 |

Free Throw Pct. (150 Att.)

| Rk | Player | Years | Pct. |
|----------|-----------------------|---------------|-----------------------|
| 1 | Carolyn Jones | .88-91 | .810 (438-541) |
| 2 | Kristen Mulligan | .92-96 | .796 (191-240) |
| 3 | Linda Godby | .86-90 | .774 (185-239) |
| 4 | Brenda Hill | .82-83 | .768 (208-271) |
| 5 | Laticia Morris | .95-97 | .767 (233-296) |
| 6 | Helene Baroody | .83-87 | .767 (155-202) |
| 7 | Patrena Scruggs | .87-89 | .749 (128-171) |
| 8 | DeWanna Bonner | .05-07 | .748 (288-385) |
| 9 | Tonia Trail | .93-97 | .741 (172-232) |
| 10 | Cindy Sargrera | .81-84 | .740 (125-169) |

Assists

| Rk | Player | Years | AST |
|----------|-----------------------|---------------|------------|
| 1 | Renae Halbrooks | .78-82 | 593 |
| 2 | Helene Baroody | .83-87 | 587 |
| 3 | Kristen Mulligan | .92-96 | 551 |
| 4 | Ruthie Bolton | .85-89 | 526 |
| 5 | Martha Monk | .79-81 | 525 |
| 6 | Chantel Tremiere | .87-91 | 490 |
| 7 | Tiffany Krantz | .96-00 | 414 |
| 8 | Debra Larkin | .81-85 | 386 |
| 9 | Whitney Boddie | .05-07 | 341 |
| 10 | Samantha Williams | .91-96 | 323 |

Assist Average (30 games)

| Rk | Player | Years | APG |
|----------|-----------------------|---------------|------------|
| 1 | Martha Monk | .79-81 | 8.3 |
| 2 | Renae Halbrooks | .78-82 | 5.5 |
| 3 | Helene Baroody | .83-87 | 5.1 |
| 4 | Whitney Boddie | .05-07 | 4.8 |
| | Kristen Mulligan | .92-96 | 4.7 |
| 6 | Ruthie Bolton | .85-89 | 4.0 |
| 7 | Chantel Tremiere | .87-91 | 4.0 |
| 8 | LaRita Spencer | .99-01 | 3.6 |
| 9 | Tiffany Krantz | .96-00 | 3.5 |
| 10 | Debra Larkin | .81-85 | 3.2 |



Nell Fortner

Head Coach Fourth Season

When Nell Fortner became the fifth head coach in Auburn women's basketball history on April 22, 2004, she brought with her a unique blend of experience that she has used to lay a foundation for the Auburn program as she is dedicated to bringing the Tigers back into the national spotlight in her third year.

As an Olympic and World Championship gold medal coach, a well-respected television analyst and a sought after motivational speaker, and with head coaching experience at all levels, Fortner has one of the most complete resumes in women's basketball.

In her first season at Auburn, Fortner led the Tigers to a 16-13 overall record and a 6-8 ledger in the SEC. Fortner's inaugural team felt the loss of two key post players in Mandisa Stevenson and Le'Co'e Willingham, as both moved on to spots on WNBA rosters. The Tigers were not expected to be a threat in conference play that year, but Fortner had her own plans that season. The Tigers became the most dangerous team in the league, nearly knocking off No. 1 LSU twice.

Fortner began a foundation for the Auburn program by inking high school All-American and Miss Basketball from Alabama and Louisiana: DeWanna Bonner, Whitney Boddie and KeKe Carrier, in 2004.

With a roster equipped with a mere three upperclassmen, one of which was a junior transfer, the Tigers 2005-06 season was one of learning for the eight underclassmen. In her second year, Fortner guided the young team to a 14-15 overall record, including a 4-10 mark in SEC play. The freshman did shine in their inaugural campaign as Bonner became the first freshman to lead the team in scoring since Becky Jackson in the 1980-81 season. Over the summer, Bonner added to her resume as she helped lead team USA to a gold medal in the FIBA Americas U20 Women's Championship in August. Classmate Carrier was also a member of the U20 trials roster.

Twelve of the 13 members of the 2006-07 suwad were brought to Auburn by Fortner and staff. Even with a roster dominated by underclassmen the Tigers reached new heights in Fortner's third year, turning in a 21-13 ledger which included a trip to the "Elite Eight" of the Women's NIT. Bonner continued to excel in her sophomore campaign, as she led the team in scoring and rebounding, becoming only the third sophomore ever at Auburn to lead the team in both categories in the same season. For her efforts, Bonner was named First Team All-SEC. Bonner gained more international experience over the summer, as she help lead the USA U21 World Championship team to a gold medal in July.

Fortner has made recruiting in the state of Alabama a priority and it shows in her fourth recruiting class as she brings in three native's in guard Ruth Ketcham, center Cassie Moore and guard Alli Smalley. The 2007-08 squad boasts eight players from the state of Alabama, the most of any Auburn squad in program history.

Fortner's impact at Auburn is much more than just on the court. She is a staple in the Auburn/Opelika area and is well-known through her community service efforts and public speaking. The Jackson, Miss., native also travels around the country for numerous speaking engagements including the Tucson Duramed FUTURES Golf Classic, which was held in May in Tucson, Ariz., and at the USOC in Colorado Springs at the "Women in Coaching" convention in September.

In addition to her work in the community, Fortner's reach is global. During her first season on the Plains, she was named as the spokesperson for the Auburn University War on Hunger in conjunction with the World Food Programme and continues in her commitment to the program.

Against LSU in 2005, the team worked along side the campus World Food Programme to host "This One's For The Girls", which raised nearly \$3,000 for the WFP and 2,406 pounds of food for the East Alabama Food Bank. In its second season, "This One's For The Girls", versus Florida on Feb. 19, 2006, brought in enough change from fans in attendance to feed more than 2,600 children.

On the national scene, Fortner is most frequently recognized by coaching Team USA to the gold medal in the 2000 Olympics. As the USA coach from 1997 to 2000, Fortner led the squad to a 101-14 record (which in addition to the Olympic gold medal included a 1998 World Championship gold medal) during that time, the most wins of any coach in Women's USA Basketball history. For her efforts, Fortner was named the 2000 USA Basketball Coach of the Year.

In 1999, Fortner was named the head coach of the WNBA's Indiana Fever and was later appointed the head coach and general manager, a position she held for three years. In order to complete her commitment to USA Basketball, the Fever granted Fortner the time necessary and joined the team for the 2001 season. While with the Fever, Fortner led the team to a 42-56

record and the 2002 WNBA Eastern Conference playoffs.

Fortner's tour with USA Basketball did not begin in the 2000 season. Starting in the summer of 1995, Fortner served as an assistant to 1996 Olympic coach Tara VanDerveer, helping lead the team to a 52-0 run. Included in that run was an 8-0 ledger in the Olympic games, which culminated with a gold medal. Fortner's duties as an assistant included overseeing the national team's strength and conditioning program, the development of perimeter players and scouting of opponents and video game analysis.

Fortner's resume as a collegiate head coach is just as impressive as she led the Purdue squad to a share of the Big Ten regular season title in 1997 with a team that returned just four players. The first-year coach was named the National Coach of the Year by Basketball Times and was awarded Big Ten Coach of the Year honors for her efforts. That season, the Boilermakers played to a 12-4 conference mark and a 17-11 overall record, as well as a second round appearance in the NCAA Tournament.

Fortner served as an assistant under Hall of Fame coach Leon Barmore at Louisiana Tech from 1991-95. During those five seasons, the Lady Techsters went 123-37 and made five consecutive appearances in the NCAA Tournament and a National Championship game appearance in 1994.

Including the 1997 season, collegiate teams associated with Fortner made nine consecutive trips to the NCAA Tournament and tallied a 10-year record of 252-66 (.792) during that time.

After graduating from Texas, Fortner took on responsibilities as the head girl's basketball coach at Killeen High School in Texas. From there, she served as a graduate assistant at Stephen F. Austin in 1987 while completing her Master's degree in education and was then promoted to a full-time assistant, where she served from 1988-90. While at SFA, the Ladyjacks played to an 87-12 record and attended three consecutive NCAA Tournament appearances.

Fortner graduated from the University of Texas in 1982, playing for mentor, and Hall of Fame coach, Jody Conradt for the 1978-81 seasons. As a player, Fortner helped guide the Longhorns to a 127-26 record during her four seasons and led Texas to its first national ranking in women's basketball and a seventh-place finish at the AIAW National Tournament. While at Texas, Fortner scored 1,466 points, which remains near the top of the scoring leaders list at UT. The multi-sport athlete also played middle hitter for the Texas volleyball team and helped lead the Longhorns to the 1981 AIAW national championship.

In 1978, Fortner was a part of the silver medal-winning U.S. Olympic Festival South Team, averaging 6.0 points and 4.3 rebounds per contest.

In November of 2001, Fortner was appointed to the University of Texas Women's Athletics Wall of Honor and the Texas Hall of Fame.

Prior to coming to The Plains, Fortner offered her talents to ESPN as a studio analyst, which included covering the NCAA Tournament and was then expanded to WNBA coverage, which she currently contributes to.

A native of Jackson, Miss., Fortner is the proud owner of two dogs, Tate, a hound mix and Jena, a yellow lab.

The Fortner File

| | |
|--------------------------|------------------------|
| Full Name | Nell Fortner |
| Birthdate | March 3 |
| Hometown | Jackson, Miss. |
| Education | Texas, 1982 |
| Overall Record | 81-56 (.591, 5th year) |
| Auburn Record | 64-45 (.587, 4th year) |
| Auburn SEC Record | 17-27 (.386, 4th year) |

- Auburn Head Coach
 - 2004-present
- ESPN Studio Analyst
 - 2001-04
 - 2005 WNBA Playoffs
- WNBA Indiana Fever Head Coach
 - 2001-03
- USA Women's Head Coach
 - 1997-2000
- Purdue Head Coach
 - 1997
- USA Women's Assistant Coach
 - 1995-96
- Louisiana Tech Assistant
 - 1991-95
- Stephen F. Austin Assistant
 - 1988-90
- Stephen F. Austin Grad. Ast.
 - 1987-88

- Big Ten Regular Season Title
 - 1997 (Purdue)
- NCAA Berth
 - 1997 (Purdue)
- Second Round Appearances
 - 1997 (Purdue)
- Olympic Gold Medal
 - 2000 (USA)



Kerry Cremeans
Assistant Coach



Seth Kushkin
Assistant Coach



Daedra Charles-Furlow
Assistant Coach



Melissa Maines
Director of
Basketball
Operations



Ramin Mazaheri
Graduate
Assistant



DeWanna BONNER #24

Junior • 6-4 • Guard
Fairfield, Ala.
Fairfield

2007-08 Notes

- Has started all 77 games of career.
- Has scored in double figures in 59 of 77 (77 percent) career games.
- Earned her eighth double-double of the season vs. Georgia; it was also the 24th of her career.
- Has grabbed double digit rebounds in 10 games this season and 28 in her career.
- Led the team in scoring 35 times in her career.
- Became the 23rd player at Auburn to earn 1,000 career points on her first shot vs. Colgate; earned 500th career rebound vs. UC Riverside to become the 20th player in AU history to reach the 500 mark.
- Just the 11th player ever at Auburn to have both 1,000 points and 500 career rebounds.
- Turned in a career high 19 rebounds at Saint Joseph's; Named to Hawk Classic All-Tournament team (sixth of her career)
- Named to Buckeye Classic All-Tournament team; her fifth All-Tournament team of her career.
- Recorded a career best 31 points vs. UAB to become first player to score 30 or more points since Natasha Brackett on Feb. 17, 2005 at Alabama (32).

2007-08 Game-By-Game

| Opponent | Min. | FG-A | 3PT-A | FT-A | 0-D-T | PF | Ast. | TO | Blk. | St. | Pts. |
|-----------------------|------|-------|-------|-------|---------|----|------|----|------|-----|------|
| Detroit | 27 | 5-9 | 0-1 | 6-6 | 3-7-10 | 0 | 3 | 1 | 1 | 3 | 16 |
| Troy | 32 | 6-9 | 0-0 | 5-6 | 2-5-7 | 3 | 3 | 3 | 0 | 3 | 17 |
| UAB | 28 | 10-16 | 0-1 | 11-12 | 5-7-12 | 3 | 2 | 3 | 2 | 1 | 31 |
| at Oakland | 34 | 10-18 | 0-2 | 2-2 | 5-7-12 | 0 | 1 | 2 | 4 | 1 | 22 |
| vs. Winston-Salem St. | DNP | | | | | | | | | | |
| vs. Ohio State | 35 | 6-12 | 1-1 | 3-5 | 0-6-6 | 3 | 1 | 0 | 0 | 1 | 16 |
| vs. UC Riverside | 29 | 3-7 | 0-0 | 3-3 | 0-12-12 | 1 | 3 | 3 | 2 | 2 | 9 |
| vs. Arizona State | 28 | 5-13 | 0-0 | 3-3 | 2-11-13 | 4 | 3 | 2 | 2 | 5 | 13 |
| Colage | 15 | 6-9 | 1-2 | 1-1 | 2-3-5 | 0 | 0 | 1 | 1 | 1 | 14 |
| at Texas A&M | 38 | 3-12 | 1-2 | 3-4 | 2-3-5 | 2 | 2 | 3 | 0 | 1 | 10 |
| at Stephen F. Austin | 32 | 7-17 | 0-1 | 3-4 | 7-10-17 | 3 | 1 | 4 | 0 | 0 | 17 |
| at Sam Houston State | 21 | 10-12 | 0-0 | 4-4 | 1-2-3 | 2 | 0 | 2 | 0 | 2 | 24 |
| vs. Davidson | 38 | 4-12 | 0-1 | 1-4 | 4-8-12 | 2 | 1 | 4 | 2 | 3 | 9 |
| vs. Saint Joseph's | 37 | 9-21 | 1-2 | 11-16 | 7-12-19 | 2 | 3 | 1 | 1 | 2 | 30 |
| George Washington | 37 | 4-14 | 0-0 | 6-10 | 5-7-12 | 2 | 1 | 1 | 3 | 1 | 14 |
| at Tennessee | 39 | 6-17 | 0-0 | 7-9 | 3-2-5 | 1 | 0 | 5 | 0 | 0 | 19 |
| Georgia | 35 | 7-14 | 2-3 | 5-6 | 4-9-13 | 0 | 2 | 1 | 2 | 2 | 21 |
| at Kentucky | | | | | | | | | | | |
| LSU | | | | | | | | | | | |
| at Alabama | | | | | | | | | | | |
| Mississippi State | | | | | | | | | | | |
| at Florida | | | | | | | | | | | |
| at Arkansas | | | | | | | | | | | |
| Alabama | | | | | | | | | | | |
| South Carolina | | | | | | | | | | | |
| at Ole Miss | | | | | | | | | | | |
| at Georgia | | | | | | | | | | | |
| Vanderbilt | | | | | | | | | | | |
| Arkansas | | | | | | | | | | | |

Season Highs

| |
|--|
| Points |
| 31 vs. UAB (11/17/07) |
| Rebounds |
| 19 at Saint Joseph's (12/29/07) |
| Steals |
| 5 at Arizona State (12/2/07) |
| Assists |
| 3, four times, last at Saint Joseph's (12/29/07) |
| Blocks |
| 4 at Oakland (11/21/07) |

Career Highs

| |
|---|
| Points |
| 31 vs. UAB (11/17/07) |
| Rebounds |
| 19 at Saint Joseph's (12/29/07) |
| Steals |
| 5, twice, last at Arizona State (12/2/07) |
| Assists |
| 6 at Buffalo (11/22/05) |
| Blocks |
| 4 at Oakland (11/21/07) |

Career Statistics

| Year | G-GS | FG-FGA | Pct. | 3G-3GA | Pct. | FT-FTA | Pct. | Ast | Blk | To | Stl | Reb-Avg | Pts-Avg |
|--------------|--------------|----------------|-------------|---------------|-------------|----------------|-------------|------------|-----------|------------|------------|----------------|------------------|
| 2005-06 | 29-29 | 135-320 | .422 | 37-89 | .415 | 94-136 | .691 | 56 | 17 | 74 | 40 | 188-6.5 | 391-13.5 |
| 2006-07 | 32-32 | 175-381 | .459 | 14-49 | .286 | 120-157 | .779 | 54 | 30 | 82 | 51 | 259-8.1 | 484-15.1 |
| 2007-08 | 16-16 | 101-212 | .476 | 6-16 | .375 | 74-95 | .779 | 26 | 20 | 36 | 28 | 163-10.2 | 393-17.6 |
| Total | 77-77 | 411-913 | .450 | 47-154 | .305 | 288-385 | .748 | 136 | 67 | 192 | 119 | 610-7.9 | 1157-15.0 |



Jordan GREENLEAF #21

Sophomore • 6-1 • Forward
 Morrow, Ga.
 Morrow

2007-08 Notes

- Grabbed season best four steals at Sam Houston State.
- Led Auburn on both sides of the ball at Texas A&M with 13 points and nine rebounds; tied career high in blocks with five.
- Tied career best and turned in a new season high 12 rebounds at Oakland
- Shot 67 percent vs. Troy and had 8 points.

2007-08 Game-By-Game

| Opponent | Min. | FG-A | 3PT-A | FT-A | 0-D-T | PF | Ast. | TO | Blk. | St. | Pts. |
|-----------------------|------|------|-------|------|--------|----|------|----|------|-----|------|
| Detroit | DNP | | | | | | | | | | |
| Troy | 28 | 4-6 | 0-0 | 0-0 | 0-0-0 | 0 | 0 | 2 | 1 | 2 | 8 |
| UAB | 31 | 1-4 | 0-0 | 1-2 | 5-4-9 | 2 | 2 | 1 | 1 | 3 | 3 |
| at Oakland | 31 | 3-8 | 0-0 | 2-6 | 7-5-12 | 5 | 2 | 1 | 2 | 0 | 8 |
| vs. Winston-Salem St. | 24 | 1-5 | 0-0 | 2-2 | 2-4-6 | 2 | 0 | 2 | 0 | 1 | 4 |
| vs. Ohio State | 30 | 2-5 | 0-0 | 0-0 | 0-2-2 | 3 | 1 | 0 | 0 | 2 | 4 |
| vs. UC Riverside | 21 | 3-6 | 0-0 | 0-0 | 1-1-2 | 4 | 1 | 1 | 0 | 1 | 6 |
| vs. Arizona State | 37 | 2-4 | 0-0 | 0-0 | 3-1-4 | 0 | 1 | 1 | 0 | 1 | 4 |
| Colage | 17 | 2-4 | 0-0 | 1-2 | 1-1-2 | 2 | 0 | 0 | 2 | 0 | 5 |
| at Texas A&M | 35 | 4-8 | 0-0 | 5-6 | 5-4-9 | 3 | 0 | 1 | 5 | 0 | 13 |
| at Stephen F. Austin | 29 | 3-6 | 0-0 | 4-4 | 4-2-6 | 2 | 2 | 2 | 4 | 2 | 10 |
| at Sam Houston State | 20 | 4-7 | 0-0 | 0-0 | 2-2-4 | 1 | 1 | 2 | 1 | 4 | 8 |
| vs. Davidson | 34 | 3-7 | 0-0 | 1-2 | 4-3-7 | 3 | 1 | 3 | 1 | 0 | 7 |
| vs. Saint Joseph's | 35 | 0-1 | 0-0 | 0-0 | 6-4-10 | 4 | 0 | 1 | 2 | 0 | 0 |
| George Washington | 28 | 3-8 | 0-0 | 0-0 | 3-1-4 | 1 | 0 | 0 | 0 | 1 | 6 |
| at Tennessee | 27 | 0-4 | 0-0 | 0-2 | 2-4-6 | 3 | 0 | 1 | 2 | 2 | 0 |
| Georgia | 33 | 2-5 | 0-0 | 3-4 | 4-1-5 | 3 | 2 | 2 | 0 | 0 | 7 |
| at Kentucky | | | | | | | | | | | |
| LSU | | | | | | | | | | | |
| at Alabama | | | | | | | | | | | |
| Mississippi State | | | | | | | | | | | |
| at Florida | | | | | | | | | | | |
| at Arkansas | | | | | | | | | | | |
| Alabama | | | | | | | | | | | |
| South Carolina | | | | | | | | | | | |
| at Ole Miss | | | | | | | | | | | |
| at Georgia | | | | | | | | | | | |
| Vanderbilt | | | | | | | | | | | |
| Arkansas | | | | | | | | | | | |

Season Highs

| | |
|-----------------|--|
| Points | 13 at Texas A&M (12/15/07) |
| Rebounds | 12 at Oakland (11/21/07) |
| Steals | 4 at Sam Houston St. (12/19/07) |
| Blocks | 5 at Texas A&M (12/15/07) |
| Assists | 2, three times, last at Stephen F. Austin (12/17/07) |

Career Highs

| | |
|-----------------|--|
| Points | 16 vs. Florida (2/22/07) |
| Rebounds | 12, twice, last at Oakland (11/21/07) |
| Steals | 6 vs. Jackson State (12/6/06) |
| Blocks | 5, twice, last at Texas A&M (12/15/07) |
| Assists | 3, twice, last vs. South Carolina (3/1/07) |

Career Statistics

| Year | G-GS | FG-FGA | Pct. | 3G-3GA | Pct. | FT-FTA | Pct. | Ast | Blk | To | Stl | Reb-Avg | Pts-Avg |
|--------------|--------------|---------------|-------------|------------|-------------|---------------|-------------|-----------|-----------|-----------|-----------|----------------|----------------|
| 2006-07 | 34-29 | 58-149 | .389 | 0-0 | .000 | 60-87 | .690 | 18 | 44 | 31 | 29 | 177-5.2 | 176-5.2 |
| 2007-08 | 16-15 | 37-88 | .420 | 0-0 | .000 | 19-30 | .633 | 13 | 21 | 20 | 19 | 88-5.5 | 93-5.8 |
| Total | 50-44 | 95-237 | .401 | 0-0 | .000 | 49-117 | .675 | 31 | 65 | 51 | 48 | 265-5.3 | 263-5.4 |



Sherell HOBBS #12

Junior • 5-11 • Guard

Huntsville, Ala.

J.O. Johnson

2007-08 Notes

- Has scored in double digits in 33 career games (averaged 12.0 points per game over last five games).
- Had at least one steal in 14 games this season and 11 straight (has had at least one steal in 60 career games).
- Tied career high for steals for fourth time this season and also tied career high in blocks with two vs. Davidson in Hawk Classic.
- Tied career high for steals for third time at Sam Houston State with five and also tied career high for assists with six.
- Named MVP of the Arizona State Classic after averaging 17.0 points, 5.0 rebounds, 2.0 assists and steals; scored a career high 26 points in championship game vs. then-No. 14 Arizona State.
- Named to Buckeye Classic All-Tournament team; the first all-tournament team of her career.

2007-08 Game-By-Game

| Opponent | Min. | FG-A | 3PT-A | FT-A | 0-D-T | PF | Ast. | TO | Blk. | St. | Pts. |
|-----------------------|------|-------|-------|------|-------|----|------|----|------|-----|------|
| Detroit | 31 | 6-12 | 1-1 | 0-0 | 2-4-6 | 2 | 4 | 2 | 1 | 4 | 13 |
| Troy | 31 | 3-10 | 0-1 | 1-2 | 0-6-6 | 1 | 1 | 0 | 1 | 3 | 7 |
| UAB | 23 | 5-9 | 0-0 | 2-5 | 2-2-4 | 3 | 3 | 2 | 0 | 2 | 12 |
| at Oakland | 23 | 2-8 | 0-1 | 2-2 | 1-3-4 | 3 | 2 | 2 | 1 | 0 | 6 |
| vs. Winston-Salem St. | 24 | 4-9 | 0-0 | 5-7 | 3-5-8 | 2 | 2 | 2 | 1 | 0 | 13 |
| vs. Ohio State | 39 | 9-13 | 1-1 | 2-4 | 3-4-7 | 2 | 1 | 3 | 0 | 0 | 21 |
| vs. UC Riverside | 24 | 3-11 | 0-0 | 2-6 | 3-3-6 | 2 | 3 | 2 | 0 | 3 | 8 |
| vs. Arizona State | 36 | 11-18 | 1-1 | 3-3 | 1-3-4 | 2 | 1 | 0 | 0 | 1 | 26 |
| Colage | 27 | 6-15 | 1-1 | 0-0 | 0-4-4 | 0 | 3 | 2 | 0 | 5 | 13 |
| at Texas A&M | 35 | 5-13 | 1-1 | 0-0 | 5-2-7 | 3 | 1 | 3 | 1 | 5 | 11 |
| at Stephen F. Austin | 22 | 1-8 | 0-0 | 0-0 | 1-3-4 | 3 | 1 | 2 | 0 | 3 | 2 |
| at Sam Houston State | 29 | 1-4 | 0-0 | 5-6 | 4-5-9 | 2 | 6 | 4 | 1 | 5 | 7 |
| vs. Davidson | 34 | 6-15 | 0-1 | 0-3 | 4-3-7 | 2 | 3 | 2 | 2 | 5 | 12 |
| vs. Saint Joseph's | 35 | 5-15 | 0-2 | 2-2 | 2-4-3 | 2 | 3 | 2 | 0 | 1 | 12 |
| George Washington | 28 | 4-9 | 0-0 | 4-6 | 3-0-3 | 2 | 1 | 2 | 0 | 2 | 12 |
| at Tennessee | 36 | 6-13 | 0-0 | 0-0 | 3-3-6 | 2 | 0 | 3 | 0 | 1 | 12 |
| Georgia | 35 | 5-13 | 0-0 | 2-2 | 2-2-4 | 2 | 3 | 3 | 0 | 1 | 12 |
| at Kentucky | | | | | | | | | | | |
| LSU | | | | | | | | | | | |
| at Alabama | | | | | | | | | | | |
| Mississippi State | | | | | | | | | | | |
| at Florida | | | | | | | | | | | |
| at Arkansas | | | | | | | | | | | |
| Alabama | | | | | | | | | | | |
| South Carolina | | | | | | | | | | | |
| at Ole Miss | | | | | | | | | | | |
| at Georgia | | | | | | | | | | | |
| Vanderbilt | | | | | | | | | | | |
| Arkansas | | | | | | | | | | | |

Season Highs

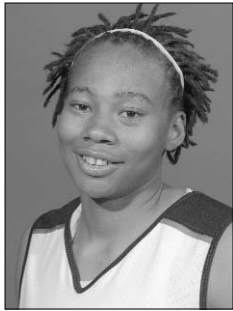
| |
|--|
| Points |
| 26 at Arizona State (12/2/07) |
| Rebounds |
| 9 at Sam Houston St. (12/19/07) |
| Steals |
| 5, four times, last at Davidson (12/28/07) |
| Assists |
| 6 at Sam Houston St. (12/19/07) |
| Blocks |
| 2 vs. Davidson (12/28/07) |

Career Highs

| |
|--|
| Points |
| 26 at Arizona State (12/2/07) |
| Rebounds |
| 11 twice, last vs. Ole Miss (1/04/07) |
| Steals |
| 5, four times, last at Davidson (12/28/07) |
| Assists |
| 6, twice, last at Sam Houston St. (12/19/07) |
| Blocks |
| 2, twice, last vs. Davidson (12/28/07) |

Career Statistics

| Year | G-GS | FG-FGA | Pct. | 3G-3GA | Pct. | FT-FTA | Pct. | Ast | Blk | To | Stl | Reb-Avg | Pts-Avg |
|--------------|--------------|----------------|-------------|--------------|-------------|----------------|-------------|------------|-----------|------------|------------|----------------|----------------|
| 2005-06 | 29-4 | 63-139 | .453 | 5-19 | .263 | 30-51 | .588 | 35 | 8 | 40 | 32 | 119-4.1 | 161-5.6 |
| 2006-07 | 34-33 | 157-333 | .471 | 0-13 | .000 | 72-97 | .742 | 65 | 9 | 77 | 61 | 148-4.4 | 386-11.4 |
| 2007-08 | 17-17 | 82-195 | .421 | 5-10 | .500 | 30-48 | .625 | 38 | 8 | 36 | 41 | 92-5.4 | 199-11.7 |
| Total | 80-54 | 302-667 | .453 | 10-42 | .238 | 132-196 | .673 | 138 | 25 | 153 | 134 | 359-4.5 | 746-9.3 |



Trevesha JACKSON # 1

Junior • 6-0 • Forward

Auburn, Ala.

Gulf Coast Community College

2007-08 Notes

- Scored a season best 12 points and tied career best with two assists vs. Georgia.
- Turned in a season best two blocks and two steals vs. Colgate.
- Tied career best with two assists vs. UC Riverside
- Earned third career double-double vs. Detroit with 10 points and 10 rebounds.

2007-08 Game-By-Game

| Opponent | Min. | FG-A | 3PT-A | FT-A | Q-D-T | PF | Ast. | TO | Blk. | St. | Pts. |
|-----------------------|------|------|-------|------|--------|----|------|----|------|-----|------|
| Detroit | 22 | 3-6 | 0-0 | 4-8 | 5-5-10 | 1 | 1 | 3 | 1 | 1 | 10 |
| Troy | 22 | 5-8 | 0-0 | 0-0 | 1-3-4 | 4 | 0 | 1 | 1 | 0 | 10 |
| UAB | 19 | 3-5 | 0-0 | 2-4 | 1-3-4 | 1 | 1 | 1 | 0 | 0 | 8 |
| at Oakland | 21 | 1-3 | 0-0 | 2-5 | 2-3-5 | 0 | 0 | 1 | 1 | 0 | 4 |
| vs. Winston-Salem St. | 21 | 4-6 | 0-0 | 1-3 | 2-5-7 | 4 | 0 | 1 | 1 | 1 | 9 |
| vs. Ohio State | 23 | 2-7 | 0-0 | 2-5 | 3-5-8 | 4 | 1 | 1 | 0 | 1 | 6 |
| vs. UC Riverside | 16 | 2-3 | 0-0 | 0-0 | 0-1-1 | 3 | 2 | 1 | 1 | 0 | 4 |
| vs. Arizona State | 9 | 0-2 | 0-0 | 0-2 | 0-1-1 | 3 | 0 | 1 | 0 | 0 | 0 |
| Colage | 16 | 2-4 | 0-0 | 3-5 | 1-3-4 | 1 | 0 | 1 | 2 | 2 | 7 |
| at Texas A&M | 8 | 1-3 | 0-0 | 2-2 | 2-1-3 | 3 | 0 | 1 | 0 | 0 | 4 |
| at Stephen F. Austin | 16 | 5-9 | 0-0 | 0-0 | 3-1-4 | 1 | 0 | 0 | 0 | 0 | 10 |
| at Sam Houston State | 19 | 1-5 | 0-0 | 0-0 | 2-4-6 | 2 | 1 | 3 | 1 | 1 | 2 |
| vs. Davidson | 13 | 1-4 | 0-0 | 0-0 | 1-4-5 | 1 | 0 | 0 | 1 | 0 | 2 |
| vs. Saint Joseph's | 7 | 1-2 | 0-0 | 0-0 | 1-0-1 | 0 | 0 | 0 | 0 | 0 | 2 |
| George Washington | 21 | 2-7 | 0-0 | 3-4 | 1-2-3 | 2 | 2 | 2 | 1 | 2 | 7 |
| at Tennessee | 26 | 2-6 | 0-0 | 4-6 | 2-5-7 | 4 | 0 | 0 | 0 | 2 | 8 |
| Georgia | 20 | 4-8 | 0-0 | 4-4 | 1-2-3 | 1 | 2 | 0 | 0 | 1 | 12 |
| at Kentucky | | | | | | | | | | | |
| LSU | | | | | | | | | | | |
| at Alabama | | | | | | | | | | | |
| Mississippi State | | | | | | | | | | | |
| at Florida | | | | | | | | | | | |
| at Arkansas | | | | | | | | | | | |
| Alabama | | | | | | | | | | | |
| South Carolina | | | | | | | | | | | |
| at Ole Miss | | | | | | | | | | | |
| at Georgia | | | | | | | | | | | |
| Vanderbilt | | | | | | | | | | | |
| Arkansas | | | | | | | | | | | |

Season Highs

| |
|---------------------------------------|
| Points |
| 12 vs. Georgia (1/13/08) |
| Rebounds |
| 10 vs. Detroit (11/11/07) |
| Steals |
| 2, twice, last at Tennessee (1/10/08) |
| Blocks |
| 2 vs. Colgate (12/5/07) |
| Assists |
| 2, twice, last vs. Georgia (1/13/08) |

Career Highs

| |
|---|
| Points |
| 14 vs. Western Michigan (11/25/06) |
| Rebounds |
| 11 vs. Arkansas (1/14/07) |
| Steals |
| 4 vs. Georgia (2/18/07) |
| Blocks |
| 3 vs. Arkansas (1/14/07) |
| Assists |
| 2, three time, last vs. Georgia (1/13/08) |

Career Statistics

| Year | G-GS | FG-FGA | Pct. | 3G-3GA | Pct. | FT-FTA | Pct. | Ast | Blk | To | Stl | Reb-Avg | Pts-Avg |
|--------------|--------------|----------------|-------------|------------|------------|---------------|-------------|-----------|-----------|-----------|-----------|----------------|----------------|
| 2006-07 | 32-10 | 72-158 | .456 | 0-0 | .000 | 43-66 | .652 | 10 | 12 | 33 | 20 | 114-3.6 | 187-5.8 |
| 2007-08 | 17-5 | 39-88 | .443 | 0-0 | .000 | 27-48 | .563 | 10 | 10 | 17 | 11 | 76-4.5 | 105-6.2 |
| Total | 49-15 | 111-246 | .451 | 0-0 | .00 | 70-114 | .614 | 20 | 22 | 50 | 31 | 190-3.9 | 292-6.0 |



Ruth KETCHAM # 11

Freshman • 5-8 • Guard
Birmingham, Ala.
Briarwood

2007-08 Notes

- Led the team with 26 points vs. Colgate; shot 6-for-8 from 3-point range to mark the best 3-point field goal percentage (.750) and most 3-pointers made this season.
- Grabbed a season best two steals and dished out season high two assists vs. Colgate.
- Shot a perfect 2-for-2 from the foul line vs. WSSU at Buckeye Classic.

2007-08 Game-By-Game

| Opponent | Min. | FG-A | 3PT-A | FT-A | Q-D-T | PF | Ast. | TO | Blk. | St. | Pts. |
|-----------------------|------|-------|-------|------|-------|----|------|----|------|-----|------|
| Detroit | 9 | 1-2 | 1-2 | 1-2 | 0-1-1 | 0 | 1 | 1 | 0 | 1 | 4 |
| Troy | DNP | | | | | | | | | | |
| UAB | 6 | 0-1 | 0-1 | 0-0 | 0-0-0 | 1 | 0 | 1 | 0 | 1 | 0 |
| at Oakland | DNP | | | | | | | | | | |
| vs. Winston-Salem St. | 13 | 0-4 | 0-4 | 2-2 | 0-1-1 | 2 | 1 | 1 | 0 | 1 | 2 |
| vs. Ohio State | DNP | | | | | | | | | | |
| vs. UC Riverside | 3 | 0-1 | 0-1 | 0-0 | 0-0-0 | 2 | 1 | 1 | 0 | 0 | 0 |
| vs. Arizona State | DNP | | | | | | | | | | |
| Colage | 19 | 10-13 | 6-8 | 0-0 | 0-1-1 | 2 | 2 | 1 | 0 | 2 | 26 |
| at Texas A&M | DNP | | | | | | | | | | |
| at Stephen F. Austin | 8 | 0-1 | 0-0 | 0-0 | 0-1-1 | 3 | 1 | 0 | 0 | 1 | 0 |
| at Sam Houston State | 17 | 3-5 | 2-4 | 1-2 | 0-1-1 | 0 | 2 | 2 | 0 | 2 | 9 |
| vs. Davidson | DNP | | | | | | | | | | |
| vs. Saint Joseph's | DNP | | | | | | | | | | |
| George Washington | 2 | 0-1 | 0-0 | 0-0 | 0 | 0 | 0 | 1 | 0 | 0 | 0 |
| at Tennessee | DNP | | | | | | | | | | |
| Georgia | 4 | 1-2 | 1-1 | 2-2 | 0-0-0 | 0 | 0 | 0 | 0 | 0 | 5 |
| at Kentucky | | | | | | | | | | | |
| LSU | | | | | | | | | | | |
| at Alabama | | | | | | | | | | | |
| Mississippi State | | | | | | | | | | | |
| at Florida | | | | | | | | | | | |
| at Arkansas | | | | | | | | | | | |
| Alabama | | | | | | | | | | | |
| South Carolina | | | | | | | | | | | |
| at Ole Miss | | | | | | | | | | | |
| at Georgia | | | | | | | | | | | |
| Vanderbilt | | | | | | | | | | | |
| Arkansas | | | | | | | | | | | |

Season/Career Highs

| | |
|-----------------|---|
| Points | 26 vs. Colgate (12/5/07) |
| Rebounds | 1, five times, last at Sam Houston St. (12/19/07) |
| Steals | 2, twice, last at Sam Houston State (12/19/07) |
| Blocks | |
| Assists | 2, twice, last at Sam Houston State (12/19/07) |

Career Statistics

| Year | G-GS | FG-FGA | Pct. | 3G-3GA | Pct. | FT-FTA | Pct. | Ast | Blk | To | Stl | Reb-Avg | Pts-Avg |
|--------------|------------|--------------|-------------|--------------|-------------|------------|-------------|----------|----------|----------|----------|--------------|---------------|
| 2007-08 | 9-0 | 15-30 | .500 | 10-21 | .476 | 6-8 | .750 | 8 | 0 | 8 | 8 | 5-0.6 | 46-5.1 |
| Total | 9-0 | 15-30 | .500 | 10-21 | .476 | 6-8 | .750 | 8 | 0 | 8 | 8 | 5-0.6 | 46-5.1 |



Tamela McCORVEY #4

Senior • 5-9 • Guard
Pensacola, Fla.
Okaloosa-Walton

2007-08 Notes

- Has scored in 50 of 51 career games; 21 of which were in double figures.
- Tied career high for steals (4) and blocks (1) vs. Davidson.
- Grabbed a career best nine rebounds at Sam Houston State.
- Named to the Arizona State Classic All-Tournament team after averaging 15.0 points; shot 50 percent for the weekend (11-of-22).
- Tied career best with four 3-pointers made and led team with 18 points vs. Detroit.

2007-08 Game-By-Game

| Opponent | Min. | FG-A | 3PT-A | FT-A | 0-D-T | PF | Ast. | TO | Blk. | St. | Pts. |
|-----------------------|------|------|-------|------|-------|----|------|----|------|-----|------|
| Detroit | 28 | 7-12 | 4-8 | 0-0 | 0-3-3 | 0 | 4 | 1 | 1 | 3 | 18 |
| Troy | 27 | 4-7 | 2-5 | 1-1 | 0-1-1 | 0 | 1 | 2 | 0 | 0 | 11 |
| UAB | 25 | 1-7 | 1-5 | 0-1 | 0-0-0 | 1 | 1 | 1 | 0 | 1 | 3 |
| at Oakland | 30 | 1-5 | 1-4 | 3-4 | 1-2-3 | 1 | 2 | 2 | 0 | 0 | 6 |
| vs. Winston-Salem St. | 28 | 3-7 | 0-3 | 0-0 | 0-2-2 | 2 | 2 | 5 | 0 | 3 | 6 |
| vs. Ohio State | 23 | 0-3 | 0-2 | 0-0 | 0-2-2 | 0 | 2 | 1 | 0 | 0 | 0 |
| vs. UC Riverside | 32 | 5-11 | 3-7 | 1-3 | 1-2-3 | 1 | 2 | 1 | 1 | 1 | 14 |
| vs. Arizona State | 35 | 6-11 | 4-7 | 0-0 | 0-1-1 | 1 | 2 | 2 | 0 | 2 | 16 |
| Colage | 26 | 2-7 | 1-2 | 2-2 | 0-1-1 | 0 | 4 | 2 | 0 | 2 | 7 |
| at Texas A&M | 37 | 3-8 | 2-6 | 0-0 | 0-2-2 | 1 | 3 | 2 | 0 | 1 | 8 |
| at Stephen F. Austin | 30 | 1-8 | 0-6 | 0-1 | 1-3-4 | 3 | 1 | 5 | 0 | 0 | 2 |
| at Sam Houston State | 29 | 3-6 | 0-1 | 1-2 | 2-7-9 | 0 | 10 | 4 | 0 | 2 | 7 |
| vs. Davidson | 35 | 4-8 | 1-4 | 4-4 | 0-3-3 | 1 | 6 | 0 | 1 | 4 | 13 |
| vs. Saint Joseph's | 38 | 3-9 | 2-4 | 0-1 | 0-3-3 | 1 | 4 | 0 | 0 | 2 | 8 |
| George Washington | 35 | 2-9 | 1-5 | 4-6 | 0-5-5 | 1 | 4 | 5 | 0 | 0 | 9 |
| at Tennessee | 27 | 2-7 | 2-3 | 0-0 | 0-1-1 | 0 | 1 | 3 | 0 | 2 | 6 |
| Georgia | 33 | 4-9 | 1-3 | 3-3 | 1-5-6 | 1 | 2 | 2 | 0 | 3 | 12 |
| at Kentucky | | | | | | | | | | | |
| LSU | | | | | | | | | | | |
| at Alabama | | | | | | | | | | | |
| Mississippi State | | | | | | | | | | | |
| at Florida | | | | | | | | | | | |
| at Arkansas | | | | | | | | | | | |
| Alabama | | | | | | | | | | | |
| South Carolina | | | | | | | | | | | |
| at Ole Miss | | | | | | | | | | | |
| at Georgia | | | | | | | | | | | |
| Vanderbilt | | | | | | | | | | | |

Season Highs

| |
|--|
| Points |
| 18 vs. Detroit (11/11/07) |
| Rebounds |
| 9 at Sam Houston St. (12/19/07) |
| Steals |
| 4 vs. Davidson (12/28/07) |
| Assists |
| 10 at Sam Houston St. (12/19/07) |
| Blocks |
| 1, three times, last vs. Davidson (12/28/07) |

Career Highs

| |
|--|
| Points |
| 24 at Maryland-Eastern Shore (12/19/06) |
| Rebounds |
| 9 at Sam Houston St. (12/19/07) |
| Steals |
| 4, twice, last vs. Davidson (12/28/07) |
| Assists |
| 11 vs. Winston-Salem State (11/17/06) |
| Blocks |
| 1, three times, last vs. Davidson (12/28/07) |

Career Statistics

| Year | G-GS | FG-FGA | Pct. | 3G-3GA | Pct. | FT-FTA | Pct. | Ast | Blk | To | Stl | Reb-Avg | Pts-Avg |
|--------------|--------------|----------------|-------------|---------------|-------------|--------------|-------------|------------|----------|------------|-----------|----------------|----------------|
| 2006-07 | 34-33 | 106-268 | .396 | 53-159 | .333 | 46-59 | .780 | 103 | 1 | 81 | 39 | 83-2.4 | 311-9.1 |
| 2007-08 | 17-17 | 51-131 | .389 | 25-75 | .333 | 19-28 | .679 | 51 | 3 | 38 | 26 | 49-2.9 | 146-8.6 |
| Total | 51-50 | 157-399 | .393 | 78-234 | .333 | 65-87 | .747 | 154 | 4 | 119 | 65 | 132-2.6 | 457-9.0 |



Cassie MOORE #15

Freshman • 6-4 • Center

Montgomery, Ala.

Jeff Davis

2007-08 Notes

- Grabbed a season best six rebounds and blocked a season best five shots at Stephen F. Austin.
- Turned in season best eight points off of 4-of-4 shooting; grabbed a season best three blocks vs. UC Riverside at ASU Classic

2007-08 Game-By-Game

| Opponent | Min. | FG-A | 3PT-A | FT-A | 0-D-T | PF | Ast. | TO | Blk. | St. | Pts. |
|-----------------------|------|------|-------|------|-------|----|------|----|------|-----|------|
| Detroit | 11 | 2-5 | 0-0 | 0-0 | 1-3-4 | 2 | 0 | 1 | 0 | 0 | 4 |
| Troy | 5 | 0-2 | 0-0 | 0-0 | 1-0-1 | 0 | 0 | 2 | 0 | 0 | 0 |
| UAB | 11 | 1-2 | 0-0 | 2-6 | 0-0-0 | 4 | 0 | 2 | 0 | 0 | 4 |
| at Oakland | DNP | | | | | | | | | | |
| vs. Winston-Salem St. | 14 | 2-4 | 0-0 | 2-2 | 2-1-3 | 1 | 0 | 4 | 2 | 1 | 14 |
| vs. Ohio State | DNP | | | | | | | | | | |
| vs. UC Riverside | 16 | 4-4 | 0-0 | 0-0 | 0-2-2 | 3 | 0 | 2 | 3 | 0 | 8 |
| vs. Arizona State | 2 | 0-0 | 0-0 | 0-0 | 0-1-1 | 3 | 0 | 0 | 0 | 0 | 3 |
| Colage | DNP | | | | | | | | | | |
| at Texas A&M | 7 | 1-1 | 0-0 | 0-0 | 1-0-1 | 2 | 0 | 0 | 1 | 0 | 2 |
| at Stephen F. Austin | 13 | 2-3 | 0-0 | 2-2 | 2-4-6 | 5 | 0 | 5 | 3 | 0 | 6 |
| at Sam Houston State | 9 | 1-2 | 0-1 | 1-2 | 0-3-3 | 2 | 0 | 2 | 0 | 0 | 3 |
| vs. Davidson | 2 | 0-1 | 0-0 | 0-0 | 1-0-1 | 0 | 0 | 0 | 0 | 0 | 0 |
| vs. Saint Joseph's | 3 | 0-0 | 0-0 | 0-0 | 0-1-1 | 0 | 0 | 2 | 0 | 0 | 0 |
| George Washington | 12 | 0-1 | 0-0 | 1-2 | 3-1-4 | 3 | 0 | 0 | 3 | 0 | 1 |
| at Tennessee | 13 | 1-4 | 0-0 | 1-2 | 1-0-1 | 1 | 0 | 0 | 0 | 1 | 3 |
| Georgia | 3 | 0-0 | 0-0 | 0-0 | 0-0-0 | 1 | 0 | 0 | 0 | 0 | 0 |
| at Kentucky | | | | | | | | | | | |
| LSU | | | | | | | | | | | |
| at Alabama | | | | | | | | | | | |
| Mississippi State | | | | | | | | | | | |
| at Florida | | | | | | | | | | | |
| at Arkansas | | | | | | | | | | | |
| Alabama | | | | | | | | | | | |
| South Carolina | | | | | | | | | | | |
| at Ole Miss | | | | | | | | | | | |
| at Georgia | | | | | | | | | | | |
| Vanderbilt | | | | | | | | | | | |
| Arkansas | | | | | | | | | | | |

Season/Career Highs

| | |
|-----------------|---------------------------------------|
| Points | 8 vs. UC Riverside (11/30/07) |
| Rebounds | 6 at Stephen F. Austin (12/17/07) |
| Steals | 1, twice, last at Tennessee (1/10/08) |
| Blocks | 5 at Stephen F. Austin (12/17/07) |
| Assists | |

Career Statistics

| Year | G-GS | FG-FGA | Pct. | 3G-3GA | Pct. | FT-FTA | Pct. | Ast | Blk | To | Stl | Reb-Avg | Pts-Avg |
|--------------|-------------|--------------|-------------|------------|-------------|-------------|-------------|----------|-----------|-----------|----------|---------------|---------------|
| 2007-08 | 14-0 | 14-29 | .483 | 0-1 | .000 | 9-16 | .563 | 0 | 13 | 20 | 2 | 28-2.0 | 37-2.6 |
| Total | 13-0 | 14-29 | .483 | 0-1 | .000 | 9-16 | .563 | 0 | 13 | 20 | 2 | 28-2.0 | 37-2.6 |



Alexis OGUBIE #34

Senior • 6-2 • Forward
Huntsville, Ala.
J.O. Johnson

2007-08 Notes

- Turned in a season best eight points vs. Davidson, including perfect 4-for-4 shooting from the charity stripe.
- Tied career high for assists with three at Sam Houston State.
- Grabbed three rebounds vs. Detroit.
- Shot a perfect 2-for-2 from foul line vs. UAB.

2007-08 Game-By-Game

| Opponent | Min. | FG-A | 3PT-A | FT-A | 0-D-T | PF | Ast. | TO | Blk. | St. | Pts. |
|-----------------------|------|------|-------|------|-------|----|------|----|------|-----|------|
| Detroit | 13 | 0-2 | 0-0 | 2-2 | 1-2-3 | 0 | 2 | 2 | 0 | 0 | 2 |
| Troy | DNP | | | | | | | | | | |
| UAB | 4 | 0-0 | 0-0 | 2-2 | 1-0-1 | 0 | 1 | 0 | 0 | 1 | 2 |
| at Oakland | 1 | 0-1 | 0-0 | 0-0 | 0-0-0 | 0 | 0 | 0 | 0 | 0 | 0 |
| vs. Winston-Salem St. | 5 | 1-1 | 0-0 | 0-0 | 0 | 1 | 0 | 1 | 0 | 0 | 2 |
| vs. Ohio State | DNP | | | | | | | | | | |
| vs. UC Riverside | 3 | 0-1 | 0-0 | 0-0 | 0-0-0 | 1 | 0 | 0 | 0 | 0 | 0 |
| vs. Arizona State | DNP | | | | | | | | | | |
| Colage | 11 | 2-3 | 0-0 | 1-2 | 1-2-3 | 1 | 0 | 1 | 0 | 0 | 5 |
| at Texas A&M | DNP | | | | | | | | | | |
| at Stephen F. Austin | 7 | 0-2 | 0-0 | 0-0 | 1-1-2 | 1 | 0 | 0 | 0 | 0 | 0 |
| at Sam Houston State | 14 | 2-5 | 0-0 | 0-0 | 0-2-2 | 1 | 3 | 1 | 1 | 1 | 4 |
| vs. Davidson | 13 | 2-4 | 0-0 | 4-4 | 1-1-2 | 0 | 0 | 0 | 0 | 0 | 8 |
| vs. Saint Joseph's | 4 | 1-2 | 0-0 | 0-0 | 0-1-1 | 1 | 0 | 2 | 1 | 0 | 2 |
| George Washington | DNP | | | | | | | | | | |
| at Tennessee | 2 | 0-0 | 0-0 | 0-0 | 0-0-0 | 0 | 0 | 0 | 0 | 0 | 0 |
| Georgia | 1 | 0-0 | 0-0 | 0-0 | 0-0-0 | 0 | 0 | 0 | 0 | 0 | 0 |
| at Kentucky | | | | | | | | | | | |
| LSU | | | | | | | | | | | |
| at Alabama | | | | | | | | | | | |
| Mississippi State | | | | | | | | | | | |
| at Florida | | | | | | | | | | | |
| at Arkansas | | | | | | | | | | | |
| Alabama | | | | | | | | | | | |
| South Carolina | | | | | | | | | | | |
| at Ole Miss | | | | | | | | | | | |
| at Georgia | | | | | | | | | | | |
| Vanderbilt | | | | | | | | | | | |
| Arkansas | | | | | | | | | | | |

Season Highs

| | |
|-----------------|--|
| Points | 8 vs. Davidson (12/28/07) |
| Rebounds | 3, twice, last vs. Colgate (12/5/07) |
| Steals | 1, twice, last at Sam Houston St. (12/19/07) |
| Assists | 3 at Sam Houston St. (12/19/07) |
| Blocks | 1 at Sam Houston St. (12/19/07) |

Career Highs

| | |
|-----------------|---|
| Points | 14 vs. Mississippi State (1/29/06) |
| Rebounds | 11, 3 times, last vs. Kentucky (2/13/05) |
| Steals | 2, 5 times, last vs. Alabama State (11/15/06) |
| Assists | 3, twice, last at Sam Houston St. (12/19/07) |
| Blocks | 4 at Alabama (1/7/07) |

Career Statistics

| Year | G-GS | FG-FGA | Pct. | 3G-3GA | Pct. | FT-FTA | Pct. | Ast | Blk | To | Stl | Reb-Avg | Pts-Avg |
|---------------|---------------|----------------|-------------|------------|-------------|----------------|-------------|-----------|-----------|------------|-----------|----------------|----------------|
| 2004-05 | 29-13 | 48-133 | .361 | 0-0 | .000 | 44-71 | .620 | 8 | 17 | 33 | 13 | 115-4.0 | 140-4.8 |
| 2005-06 | 29-7 | 57-137 | .416 | 0-2 | .000 | 35-46 | .761 | 11 | 17 | 39 | 15 | 94-3.2 | 149.5.1 |
| 2006-07 | 31-3 | 46-105 | .438 | 0-0 | .000 | 20-43 | .465 | 12 | 15 | 22 | 12 | 83-2.7 | 112-3.6 |
| 2007-08 | 12-0 | 8-21 | .381 | 0-0 | .000 | 9-10 | .900 | 6 | 2 | 7 | 2 | 14-1.3 | 25-2.3 |
| Totals | 101-23 | 159-396 | .402 | 0-2 | .000 | 108-170 | .635 | 37 | 51 | 101 | 42 | 306-3.0 | 426-4.2 |



Milaika PICKARD #50

Sophomore • 6-2 • Forward/Center
Columbus, Ga.
Carver

2007-08 Notes

- Grabbed a career best four rebounds vs. Colgate.

2007-08 Game-By-Game

| Opponent | Min. | FG-A | 3PT-A | FT-A | 0-D-T | PF | Ast. | TO | Blk. | St. | Pts. |
|-----------------------|------|------|-------|------|-------|----|------|----|------|-----|------|
| Detroit | 6 | 1-2 | 0-0 | 0-0 | 1-1-2 | 0 | 0 | 1 | 0 | 0 | 2 |
| Troy | DNP | | | | | | | | | | |
| UAB | DNP | | | | | | | | | | |
| at Oakland | DNP | | | | | | | | | | |
| vs. Winston-Salem St. | 4 | 0-0 | 0-0 | 0-0 | 0-1-1 | 0 | 0 | 0 | 0 | 0 | 0 |
| vs. Ohio State | DNP | | | | | | | | | | |
| vs. UC Riverside | 3 | 0-0 | 0-0 | 0-0 | 1-1-2 | 2 | 0 | 2 | 0 | 0 | 0 |
| vs. Arizona State | DNP | | | | | | | | | | |
| Colgate | 13 | 0-1 | 0-0 | 0-0 | 1-3-4 | 1 | 0 | 0 | 0 | 0 | 0 |
| at Texas A&M | DNP | | | | | | | | | | |
| at Stephen F. Austin | 4 | 0-1 | 0-0 | 0-0 | 0-0-0 | 0 | 0 | 0 | 0 | 0 | 0 |
| at Sam Houston State | 8 | 1-1 | 0-0 | 0-2 | 0-2-2 | 1 | 1 | 0 | 0 | 1 | 2 |
| vs. Davidson | DNP | | | | | | | | | | |
| vs. Saint Joseph's | 2 | 1-2 | 0-0 | 0-0 | 1-0-1 | 0 | 0 | 0 | 0 | 0 | 2 |
| George Washington | DNP | | | | | | | | | | |
| at Tennessee | DNP | | | | | | | | | | |
| Georgia | DNP | | | | | | | | | | |
| at Kentucky | | | | | | | | | | | |
| LSU | | | | | | | | | | | |
| at Alabama | | | | | | | | | | | |
| Mississippi State | | | | | | | | | | | |
| at Florida | | | | | | | | | | | |
| at Arkansas | | | | | | | | | | | |
| Alabama | | | | | | | | | | | |
| South Carolina | | | | | | | | | | | |
| at Ole Miss | | | | | | | | | | | |
| at Georgia | | | | | | | | | | | |
| Vanderbilt | | | | | | | | | | | |
| Arkansas | | | | | | | | | | | |

Season Highs

Points

2, three times, last at Saint Joseph's (12/29/07)

Rebounds

4 vs. Colgate (12/5/07)

Assists

1 at Sam Houston St. (12/19/07)

Steals

1 at Sam Houston St. (12/19/07)

Blocks

Career Highs

Points

5 at Vanderbilt (2/11/07)

Rebounds

4 vs. Colgate (12/5/07)

Assists

1, twice, last at Sam Houston St. (12/19/07)

Career Statistics

| Year | G-GS | FG-FGA | Pct. | 3G-3GA | Pct. | FT-FTA | Pct. | Ast | Blk | To | Stl | Reb-Avg | Pts-Avg |
|--------------|-------------|-------------|-------------|------------|-------------|------------|-------------|----------|----------|----------|----------|---------------|---------------|
| 2006-07 | 7-0 | 3-8 | .375 | 0-0 | .000 | 2-4 | .500 | 1 | 0 | 5 | 0 | 4-0.6 | 8-1.1 |
| 2007-08 | 7-0 | 3-7 | .429 | 0-0 | .000 | 0-2 | .000 | 1 | 0 | 3 | 1 | 12-1.7 | 6-0.9 |
| Total | 14-0 | 6-15 | .400 | 0-0 | .000 | 2-6 | .333 | 2 | 0 | 8 | 1 | 16-1.1 | 14-1.0 |



Alli SMALLEY #5

Freshman • 5-8 • Guard
 Arab, Ala.
 Arab

2007-08 Notes

- Has hit at least one 3-pointer in 13 of 17 games.
- Blocked a career best two shots vs. Georgia.
- Grabbed a career high nine rebounds vs. George Washington.
- Earned first career start against Saint Joseph's; Named to Hawk Classic All-Tournament team after averaging 13.5 points.
- Tied season high for steals with three vs. Davidson.
- Grabbed a season best eight rebounds at Stephen F. Austin.
- Named SEC Freshman of the Week (Nov. 19) after performance vs. UAB
- Led Auburn from 3-point range vs. UAB, making 4-of-6 en route to scoring 20 points off of 8-of-10 shooting.
- Scored 12 points in collegiate debut vs. Detroit.

2007-08 Game-By-Game

| Opponent | Min. | FG-A | 3PT-A | FT-A | 0-D-T | PF | Ast. | TO | Blk. | St. | Pts. |
|-----------------------|------|------|-------|------|-------|----|------|----|------|-----|------|
| Detroit | 22 | 5-13 | 2-5 | 0-0 | 0-2-2 | 2 | 2 | 3 | 0 | 2 | 12 |
| Troy | 19 | 3-7 | 2-5 | 0-0 | 1-2-3 | 2 | 6 | 1 | 1 | 2 | 8 |
| UAB | 25 | 8-10 | 4-6 | 0-0 | 2-0-2 | 1 | 1 | 6 | 0 | 0 | 20 |
| at Oakland | 20 | 2-11 | 2-8 | 0-0 | 0-1-1 | 1 | 2 | 1 | 0 | 3 | 6 |
| vs. Winston-Salem St. | 26 | 5-12 | 2-5 | 0-0 | 0-3-3 | 0 | 4 | 3 | 1 | 2 | 12 |
| vs. Ohio State | 15 | 0-3 | 0-1 | 0-0 | 0-1-1 | 1 | 1 | 2 | 0 | 1 | 0 |
| vs. UC Riverside | 21 | 5-9 | 1-3 | 0-0 | 0-1-1 | 0 | 2 | 1 | 1 | 1 | 11 |
| vs. Arizona State | 16 | 4-8 | 1-4 | 0-0 | 1-0-1 | 1 | 2 | 1 | 0 | 0 | 9 |
| Colage | 22 | 5-8 | 3-4 | 3-4 | 0-1-1 | 1 | 3 | 0 | 0 | 1 | 16 |
| at Texas A&M | 3 | 0-0 | 0-0 | 0-0 | 0-1-1 | 0 | 0 | 1 | 0 | 0 | 0 |
| at Stephen F. Austin | 31 | 6-12 | 2-8 | 0-1 | 3-5-8 | 1 | 2 | 5 | 0 | 2 | 14 |
| at Sam Houston State | 27 | 5-7 | 0-1 | 2-2 | 1-1-2 | 0 | 3 | 4 | 1 | 2 | 12 |
| vs. Davidson | 30 | 7-14 | 1-5 | 0-0 | 1-1-2 | 2 | 3 | 5 | 1 | 3 | 15 |
| vs. Saint Joseph's | 39 | 5-17 | 2-9 | 1-1 | 1-2-3 | 2 | 3 | 2 | 0 | 1 | 12 |
| George Washington | 37 | 7-10 | 3-6 | 0-0 | 5-4-9 | 1 | 5 | 3 | 0 | 1 | 17 |
| at Tennessee | 30 | 2-9 | 0-2 | 0-2 | 1-5-6 | 1 | 4 | 9 | 0 | 1 | 4 |
| Georgia | 35 | 5-10 | 2-3 | 1-2 | 0-4-4 | 3 | 5 | 3 | 2 | 2 | 13 |
| at Kentucky | | | | | | | | | | | |
| LSU | | | | | | | | | | | |
| at Alabama | | | | | | | | | | | |
| Mississippi State | | | | | | | | | | | |
| at Florida | | | | | | | | | | | |
| at Arkansas | | | | | | | | | | | |
| Alabama | | | | | | | | | | | |
| South Carolina | | | | | | | | | | | |
| at Ole Miss | | | | | | | | | | | |
| at Georgia | | | | | | | | | | | |
| Vanderbilt | | | | | | | | | | | |
| Arkansas | | | | | | | | | | | |

Season/Career Highs

| | |
|-----------------|--|
| Points | 20 vs. UAB (11/17/07) |
| Rebounds | 9 vs. George Washington (1/3/08) |
| Steals | 3, twice, last vs. Davidson (12/28/07) |
| Blocks | 2 vs. Georgia (1/13/08) |
| Assists | 6 vs. Troy (11/14/07) |

Career Statistics

| Year | G-GS | FG-FGA | Pct. | 3G-3GA | Pct. | FT-FTA | Pct. | Ast | Blk | To | Stl | Reb-Avg | Pts-Avg |
|--------------|-------------|---------------|-------------|--------------|-------------|-------------|-------------|-----------|----------|-----------|-----------|---------------|-----------------|
| 2007-08 | 17-4 | 74-160 | .463 | 27-75 | .360 | 7-12 | .583 | 47 | 7 | 50 | 24 | 50-2.9 | 182-10.7 |
| Total | 17-4 | 74-160 | .463 | 27-75 | .360 | 7-12 | .583 | 47 | 7 | 50 | 24 | 50-2.9 | 182-10.7 |



Juanitta WALLACE #32

Senior • 6-4 • Forward
 Detroit, Mich.
 Tennessee State

2007-08 Notes

- Grabbed a career best seven rebounds vs. WSSU and added three points.

2007-08 Game-By-Game

| Opponent | Min. | FG-A | 3PT-A | FT-A | O-D-T | PF | Ast. | TO | Blk. | St. | Pts. |
|-----------------------|------|------|-------|------|-------|----|------|----|------|-----|------|
| Detroit | 4 | 0-0 | 0-0 | 0-0 | 0-1-1 | 1 | 0 | 0 | 1 | 0 | 0 |
| Troy | 1 | 0-0 | 0-0 | 0-0 | 0-0-0 | 0 | 0 | 0 | 0 | 0 | 0 |
| UAB | DNP | | | | | | | | | | |
| at Oakland | 7 | 0-1 | 0-0 | 0-0 | 1-0-1 | 0 | 0 | 1 | 0 | 0 | 0 |
| vs. Winston-Salem St. | 13 | 0-1 | 0-0 | 3-4 | 6-1-7 | 1 | 0 | 2 | 0 | 1 | 3 |
| vs. Ohio State | DNP | | | | | | | | | | |
| vs. UC Riverside | 8 | 0-0 | 0-0 | 0-0 | 2-1-3 | 0 | 0 | 1 | 0 | 0 | 0 |
| vs. Arizona State | DNP | | | | | | | | | | |
| Colage | 13 | 0-0 | 0-0 | 0-0 | 2-0-2 | 1 | 0 | 1 | 1 | 0 | 0 |
| at Texas A&M | 0+ | 0-0 | 0-0 | 0-0 | 0-0-0 | 0 | 0 | 0 | 0 | 0 | 0 |
| at Stephen F. Austin | 4 | 0-0 | 0-0 | 0-0 | 0-2-2 | 0 | 0 | 2 | 0 | 0 | 0 |
| at Sam Houston State | 7 | 1-1 | 0-0 | 0-0 | 0-2-2 | 0 | 1 | 1 | 1 | 0 | 2 |
| vs. Davidson | 1 | 0-0 | 0-0 | 0-0 | 0-0-0 | 0 | 0 | 0 | 0 | 0 | 0 |
| vs. Saint Joseph's | DNP | | | | | | | | | | |
| George Washington | DNP | | | | | | | | | | |
| at Tennessee | DNP | | | | | | | | | | |
| Georgia | 1 | 0-0 | 0-0 | 0-0 | 0-0-0 | 0 | 0 | 0 | 0 | 0 | 0 |
| at Kentucky | | | | | | | | | | | |
| LSU | | | | | | | | | | | |
| at Alabama | | | | | | | | | | | |
| Mississippi State | | | | | | | | | | | |
| at Florida | | | | | | | | | | | |
| at Arkansas | | | | | | | | | | | |
| Alabama | | | | | | | | | | | |
| South Carolina | | | | | | | | | | | |
| at Ole Miss | | | | | | | | | | | |
| at Georgia | | | | | | | | | | | |
| Vanderbilt | | | | | | | | | | | |
| Arkansas | | | | | | | | | | | |

Season Highs

| |
|--|
| Points |
| 3 vs. WSSU (11/24/07) |
| Rebounds |
| 7 vs. WSSU (11/24/07) |
| Blocks |
| 1, three times, last at Sam Houston St. (12/19/07) |
| Steals |
| 1 vs. WSSU (11/24/07) |
| Assists |
| 1 at Sam Houston St. (12/19/07) |

Career Highs

| |
|--|
| Points |
| 6 vs. UTPA (11/18/05) |
| Rebounds |
| 7 vs. WSSU (11/24/07) |
| Blocks |
| 2, twice, last vs. Jackson State (12/6/06) |
| Steals |
| 2 at Duke (11/27/05) |
| Assists |
| 1, three times, last at Sam Houston St. (12/19/07) |

Career Statistics

| Year | G-GS | FG-FGA | Pct. | 3G-3GA | Pct. | FT-FTA | Pct. | Ast | Blk | To | Stl | Reb-Avg | Pts-Avg |
|--------------|-------------|-------------|-------------|------------|-------------|--------------|-------------|----------|-----------|-----------|----------|---------------|---------------|
| 2005-06 | 13-0 | 3-7 | .429 | 0-0 | .000 | 8-19 | .421 | 1 | 4 | 4 | 3 | 14-1.0 | 15-1.1 |
| 2006-07 | 17-0 | 2-6 | .333 | 0-0 | .000 | 1-4 | .250 | 4 | 7 | 6 | 2 | 10-0.6 | 5-0.3 |
| 2007-08 | 11-0 | 1-3 | .333 | 0-0 | .000 | 3-4 | .750 | 1 | 3 | 8 | 1 | 18-1.8 | 5-0.5 |
| Total | 41-0 | 6-16 | .375 | 0-0 | .000 | 12-27 | .444 | 6 | 13 | 18 | 6 | 41-1.0 | 24-0.6 |

2007-08 Auburn Basketball
Auburn Tigers Combined Team Statistics (as of Jan 13, 2008)
All games

| | | | | |
|-----------------------------|----------------|--------------|--------------|----------------|
| RECORD: | OVERALL | HOME | AWAY | NEUTRAL |
| ALL GAMES | (13-4) | (5-1) | (5-3) | (3-0) |
| CONFERENCE | (1-1) | (1-0) | (0-1) | (0-0) |
| NON-CONFERENCE | (12-3) | (4-1) | (5-2) | (3-0) |

| ## | Player | GP-GS | Min--Avg | ---TOTAL--- | | ---3-PTS--- | | ---FT-FTA | | ---REBOUNDS--- | | | | PF | FO | A | TO | Blk | Stl | Pts | Avg |
|----------------|---------------------------|----------|----------|-------------|-------|-------------|-------|-----------|------|----------------|-----|-----|------|-----|----|-----|-----|-----|-----|------|------|
| | | | | FG-FGA | Pct | 3FG-FGA | Pct | Pct | Off | Def | Tot | Avg | | | | | | | | | |
| 24 | Bonner, DeWanna.... | 16-16 | 505 31.6 | 101-212 | .476 | 6-16 | .375 | 74-95 | .779 | 52 | 111 | 163 | 10.2 | 28 | 0 | 26 | 36 | 20 | 28 | 282 | 17.6 |
| 12 | Hobbs, Sherell.... | 17-17 | 512 30.1 | 82-195 | .421 | 5-10 | .500 | 30-48 | .625 | 39 | 53 | 92 | 5.4 | 35 | 0 | 38 | 36 | 8 | 41 | 199 | 11.7 |
| 05 | Smalley, Alli..... | 17-4 | 416 24.5 | 74-160 | .463 | 27-75 | .360 | 7-12 | .583 | 16 | 34 | 50 | 2.9 | 21 | 0 | 47 | 50 | 7 | 24 | 182 | 10.7 |
| 44 | Boddie, Whitney.... | 11-11 | 310 28.2 | 43-103 | .417 | 0-1 | .000 | 31-41 | .756 | 19 | 51 | 70 | 6.4 | 15 | 0 | 64 | 32 | 0 | 23 | 117 | 10.6 |
| 04 | McCorvey, Tamela... 17-17 | 519 30.5 | 51-131 | .389 | 25-75 | .333 | 19-28 | .679 | 6 | 43 | 49 | 2.9 | 15 | 0 | 51 | 38 | 3 | 26 | 146 | 8.6 | |
| 01 | Jackson, Trevesha.. 17-5 | 300 17.6 | 39-88 | .443 | 0-0 | .000 | 27-48 | .563 | 28 | 48 | 76 | 4.5 | 35 | 0 | 10 | 17 | 10 | 11 | 105 | 6.2 | |
| 21 | Greenleaf, Jordan.. 16-15 | 460 28.8 | 37-88 | .420 | 0-0 | .000 | 19-30 | .633 | 49 | 39 | 88 | 5.5 | 38 | 1 | 13 | 20 | 21 | 19 | 93 | 5.8 | |
| 11 | Ketcham, Ruth..... 9-0 | 81 9.0 | 15-30 | .500 | 10-21 | .476 | 6-8 | .750 | 0 | 5 | 5 | 0.6 | 10 | 0 | 8 | 8 | 0 | 8 | 46 | 5.1 | |
| 15 | Moore, Cassie..... 14-0 | 121 8.6 | 14-29 | .483 | 0-1 | .000 | 9-16 | .563 | 12 | 16 | 28 | 2.0 | 27 | 1 | 0 | 20 | 13 | 2 | 37 | 2.6 | |
| 34 | Ogubie, Alexis..... 12-0 | 78 6.5 | 8-21 | .381 | 0-0 | .000 | 9-10 | .900 | 5 | 9 | 14 | 1.2 | 6 | 0 | 6 | 7 | 2 | 2 | 25 | 2.1 | |
| 50 | Pickard, Milaika... 7-0 | 40 5.7 | 3-7 | .429 | 0-0 | .000 | 0-2 | .000 | 4 | 8 | 12 | 1.7 | 4 | 0 | 1 | 3 | 0 | 1 | 6 | 0.9 | |
| 32 | Wallace, Juanitta.. 11-0 | 59 5.4 | 1-3 | .333 | 0-0 | .000 | 3-4 | .750 | 11 | 7 | 18 | 1.6 | 3 | 0 | 1 | 8 | 3 | 1 | 5 | 0.5 | |
| TEAM..... | | | | | | | | | | 21 | 34 | 55 | 3.2 | 0 | | 3 | | | | | |
| Total..... | | 17 | 3401 | 468-1067 | .439 | 73-199 | .367 | 234-342 | .684 | 262 | 458 | 720 | 42.4 | 237 | 2 | 265 | 278 | 87 | 186 | 1243 | 73.1 |
| Opponents..... | | 17 | 3400 | 372-981 | .379 | 81-273 | .297 | 152-214 | .710 | 185 | 398 | 583 | 34.3 | 291 | - | 224 | 336 | 54 | 116 | 977 | 57.5 |

| TEAM STATISTICS | AU | OPP | DATE | OPPONENT | W/L | SCORE | ATTEND |
|-------------------------|----------|---------|-----------|------------------------|-----|-------|--------|
| SCORING..... | 1243 | 977 | 11/11/07 | DETROIT MERCY | W | 91-47 | 707 |
| Points per game..... | 73.1 | 57.5 | 11/14/07 | TROY UNIVERSITY | W | 77-61 | 515 |
| Scoring margin..... | +15.6 | - | 11/17/07 | UAB | W | 93-66 | 948 |
| FIELD GOALS-ATT..... | 468-1067 | 372-981 | 11/21/07 | at Oakland | W | 71-63 | 805 |
| Field goal pct..... | .439 | .379 | 11/24/07 | vs Winston-Salem State | W | 70-37 | - |
| 3 POINT FG-ATT..... | 73-199 | 81-273 | 11/25/07 | at Ohio State | W | 67-58 | 2891 |
| 3-point FG pct..... | .367 | .297 | 11-30-07 | vs UC Riverside | W | 64-47 | 2454 |
| 3-pt FG made per game.. | 4.3 | 4.8 | 12-02-07 | at Arizona State | W | 75-69 | 2646 |
| FREE THROWS-ATT..... | 234-342 | 152-214 | 12/05/07 | COLGATE | W | 99-47 | 1005 |
| Free throw pct..... | .684 | .710 | 12/15/07 | at Texas A&M | L | 60-62 | 3663 |
| REBOUNDS..... | 720 | 583 | 12-17-07 | at Stephen F. Austin | W | 61-49 | 1249 |
| Rebounds per game..... | 42.4 | 34.3 | 12/19/07 | at Sam Houston St | W | 80-36 | 247 |
| Rebounding margin..... | +8.1 | - | 12/28/07 | vs Davidson | W | 66-59 | 719 |
| ASSISTS..... | 265 | 224 | 12/29/07 | at Saint Joseph's | L | 69-71 | 951 |
| Assists per game..... | 15.6 | 13.2 | 01/03/08 | GEORGE WASHINGTON | L | 66-68 | 1217 |
| TURNOVERS..... | 278 | 336 | *01/10/08 | at #2 TENNESSEE | L | 52-85 | 14025 |
| Turnovers per game.... | 16.4 | 19.8 | *01/13/08 | GEORGIA | W | 82-52 | 2893 |
| Turnover margin..... | +3.4 | - | | | | | |
| Assist/turnover ratio.. | 1.0 | 0.7 | | | | | |
| STEALS..... | 186 | 116 | | | | | |
| Steals per game..... | 10.9 | 6.8 | | | | | |
| BLOCKS..... | 87 | 54 | | | | | |
| Blocks per game..... | 5.1 | 3.2 | | | | | |
| WINNING STREAK..... | 1 | - | | | | | |
| Home win streak..... | 1 | - | | | | | |
| ATTENDANCE..... | 7285 | 29650 | | | | | |
| Home games-Avg/Game... | 6-1214 | 8-3310 | | | | | |
| Neutral site-Avg/Game.. | - | 3-1058 | | | | | |
| SCORE BY PERIODS: | 1st | 2nd | Total | | | | |
| Auburn Tigers..... | 589 | 654 | - 1243 | | | | |
| Opponents..... | 454 | 523 | - 977 | | | | |

2007-08 Auburn Basketball
Auburn Tigers Combined Team Statistics (as of Jan 14, 2008)
Conference games

| | | | | |
|-----------------------------|----------------|-------------|-------------|----------------|
| RECORD: | OVERALL | HOME | AWAY | NEUTRAL |
| ALL GAMES | (1-1) | (1-0) | (0-1) | (0-0) |
| CONFERENCE | (1-1) | (1-0) | (0-1) | (0-0) |
| NON-CONFERENCE | (0-0) | (0-0) | (0-0) | (0-0) |

| ## Player | GP-GS | Min--Avg | ---TOTAL--- | | ---3-PTS--- | | FT-FTA | Pct | ---REBOUNDS--- | | | | PF | FO | A | TO | Blk | Stl | Pts | Avg |
|------------------------|-------|----------|-------------|------|-------------|-------|--------|-------|----------------|-----|-----|------|----|----|----|----|-----|-----|-----|------|
| | | | FG-FGA | Pct | 3FG-FGA | Pct | | | Off | Def | Tot | Avg | | | | | | | | |
| 24 Bonner, DeWanna.... | 2-2 | 74 37.0 | 13-31 | .419 | 2-3 | .667 | 12-15 | .800 | 7 | 11 | 18 | 9.0 | 1 | 0 | 2 | 6 | 2 | 2 | 40 | 20.0 |
| 12 Hobbs, Sherell.... | 2-2 | 71 35.5 | 11-26 | .423 | 0-0 | .000 | 2-2 | 1.000 | 5 | 5 | 10 | 5.0 | 4 | 0 | 3 | 6 | 0 | 2 | 24 | 12.0 |
| 01 Jackson, Trevesha.. | 2-0 | 46 23.0 | 6-14 | .429 | 0-0 | .000 | 8-10 | .800 | 3 | 7 | 10 | 5.0 | 5 | 0 | 2 | 0 | 0 | 3 | 20 | 10.0 |
| 04 McCorvey, Tamela.. | 2-2 | 60 30.0 | 6-16 | .375 | 3-6 | .500 | 3-3 | 1.000 | 1 | 6 | 7 | 3.5 | 1 | 0 | 3 | 5 | 0 | 5 | 18 | 9.0 |
| 05 Smalley, Alli..... | 2-2 | 65 32.5 | 7-19 | .368 | 2-5 | .400 | 1-4 | .250 | 1 | 9 | 10 | 5.0 | 4 | 0 | 9 | 12 | 2 | 3 | 17 | 8.5 |
| 11 Ketcham, Ruth..... | 1-0 | 4 4.0 | 1-2 | .500 | 1-1 | 1.000 | 2-2 | 1.000 | 0 | 0 | 0 | 0.0 | 0 | 0 | 0 | 0 | 0 | 0 | 5 | 5.0 |
| 21 Greenleaf, Jordan.. | 2-2 | 60 30.0 | 2-9 | .222 | 0-0 | .000 | 3-6 | .500 | 6 | 5 | 11 | 5.5 | 6 | 0 | 2 | 3 | 2 | 2 | 7 | 3.5 |
| 15 Moore, Cassie..... | 2-0 | 16 8.0 | 1-4 | .250 | 0-0 | .000 | 1-2 | .500 | 1 | 0 | 1 | 0.5 | 2 | 0 | 0 | 0 | 0 | 1 | 3 | 1.5 |
| 32 Wallace, Juanitta.. | 1-0 | 1 1.0 | 0-0 | .000 | 0-0 | .000 | 0-0 | .000 | 0 | 0 | 0 | 0.0 | 0 | 0 | 0 | 0 | 0 | 0 | 0 | 0.0 |
| 34 Ogubie, Alexis..... | 2-0 | 3 1.5 | 0-0 | .000 | 0-0 | .000 | 0-0 | .000 | 0 | 0 | 0 | 0.0 | 0 | 0 | 0 | 0 | 0 | 0 | 0 | 0.0 |
| TEAM..... | | | | | | | | | 5 | 7 | 12 | 6.0 | 0 | | 0 | | | | | |
| Total..... | 2 | 400 | 47-121 | .388 | 8-15 | .533 | 32-44 | .727 | 29 | 50 | 79 | 39.5 | 23 | 0 | 21 | 32 | 6 | 18 | 134 | 67.0 |
| Opponents..... | 2 | 400 | 49-129 | .380 | 12-33 | .364 | 27-34 | .794 | 32 | 50 | 82 | 41.0 | 34 | - | 24 | 30 | 16 | 18 | 137 | 68.5 |

| TEAM STATISTICS | AU | OPP | DATE | OPPONENT | W/L | SCORE | ATTEND |
|-------------------------|--------|---------|-----------|-----------------|-----|-------|--------|
| SCORING..... | 134 | 137 | *01/10/08 | at #2 TENNESSEE | L | 52-85 | 14025 |
| Points per game..... | 67.0 | 68.5 | *01/13/08 | GEORGIA | W | 82-52 | 2893 |
| Scoring margin..... | -1.5 | - | | | | | |
| FIELD GOALS-ATT..... | 47-121 | 49-129 | | | | | |
| Field goal pct..... | .388 | .380 | | | | | |
| 3 POINT FG-ATT..... | 8-15 | 12-33 | | | | | |
| 3-point FG pct..... | .533 | .364 | | | | | |
| 3-pt FG made per game.. | 4.0 | 6.0 | | | | | |
| FREE THROWS-ATT..... | 32-44 | 27-34 | | | | | |
| Free throw pct..... | .727 | .794 | | | | | |
| REBOUNDS..... | 79 | 82 | | | | | |
| Rebounds per game..... | 39.5 | 41.0 | | | | | |
| Rebounding margin..... | -1.5 | - | | | | | |
| ASSISTS..... | 21 | 24 | | | | | |
| Assists per game..... | 10.5 | 12.0 | | | | | |
| TURNOVERS..... | 32 | 30 | | | | | |
| Turnovers per game..... | 16.0 | 15.0 | | | | | |
| Turnover margin..... | -1.0 | - | | | | | |
| Assist/turnover ratio.. | 0.7 | 0.8 | | | | | |
| STEALS..... | 18 | 18 | | | | | |
| Steals per game..... | 9.0 | 9.0 | | | | | |
| BLOCKS..... | 6 | 16 | | | | | |
| Blocks per game..... | 3.0 | 8.0 | | | | | |
| WINNING STREAK..... | 1 | - | | | | | |
| Home win streak..... | 1 | - | | | | | |
| ATTENDANCE..... | 2893 | 14025 | | | | | |
| Home games-Avg/Game... | 1-2893 | 1-14025 | | | | | |
| Neutral site-Avg/Game.. | - | 0-0 | | | | | |

| SCORE BY PERIODS: | 1st | 2nd | Total |
|--------------------|-----|-----|-------|
| Auburn Tigers..... | 69 | 65 | - 134 |
| Opponents..... | 77 | 60 | - 137 |

2007-08 Auburn Basketball
Auburn Tigers Team Game-by-Game (as of Jan 14, 2008)
All games

TEAM STATISTICS

| Opponent | Date | Score | W/L | ---TOTAL--- | | --3-PTRS-- | | FT-FTA | | Pct | | ----REBOUNDS---- | | | | PF | A | TO | Blk | Stl | Pts---Avg | |
|-----------------------|----------|-------|-----|-------------|------|------------|------|--------|------|---------|------|------------------|------|-----|------|-----|-----|-----|-----|------|-----------|------|
| | | | | FG-FGA | Pct | 3FG-FGA | Pct | Off | Def | Tot | Avg | | | | | | | | | | | |
| DETROIT MERCY | 11/11/07 | 91-47 | W | 35-73 | .479 | 8-17 | .471 | 13-18 | .722 | 17 | 34 | 51 | 51.0 | 9 | 23 | 19 | 5 | 20 | 91 | 91.0 | | |
| TROY UNIVERSITY | 11/14/07 | 77-61 | W | 32-62 | .516 | 4-11 | .364 | 9-11 | .818 | 9 | 23 | 32 | 41.5 | 10 | 18 | 14 | 4 | 12 | 77 | 84.0 | | |
| UAB | 11/17/07 | 93-66 | W | 32-61 | .525 | 5-13 | .385 | 24-38 | .632 | 18 | 25 | 43 | 42.0 | 18 | 20 | 21 | 3 | 13 | 93 | 87.0 | | |
| at Oakland | 11/21/07 | 71-63 | W | 26-70 | .371 | 3-15 | .200 | 16-27 | .593 | 19 | 34 | 53 | 44.8 | 12 | 13 | 12 | 8 | 5 | 71 | 83.0 | | |
| vs Winston-Salem Stat | 11/24/07 | 70-37 | W | 23-59 | .390 | 2-12 | .167 | 22-29 | .759 | 17 | 31 | 48 | 45.4 | 18 | 11 | 24 | 5 | 12 | 70 | 80.4 | | |
| at Ohio State | 11/25/07 | 67-58 | W | 26-60 | .433 | 2-5 | .400 | 13-21 | .619 | 11 | 27 | 38 | 44.2 | 13 | 14 | 12 | 0 | 6 | 67 | 78.2 | | |
| vs UC Riverside | 11-30-07 | 64-47 | W | 26-57 | .456 | 4-11 | .364 | 8-14 | .571 | 10 | 28 | 38 | 43.3 | 19 | 20 | 17 | 8 | 10 | 64 | 76.1 | | |
| at Arizona State | 12-02-07 | 75-69 | W | 30-66 | .455 | 6-12 | .500 | 9-13 | .692 | 10 | 25 | 35 | 42.2 | 17 | 19 | 11 | 2 | 9 | 75 | 76.0 | | |
| COLGATE | 12/05/07 | 99-47 | W | 38-66 | .576 | 12-17 | .706 | 11-16 | .688 | 9 | 24 | 33 | 41.2 | 9 | 20 | 9 | 6 | 17 | 99 | 78.6 | | |
| at Texas A&M | 12/15/07 | 60-62 | L | 22-57 | .386 | 4-10 | .400 | 12-14 | .857 | 18 | 19 | 37 | 40.8 | 17 | 11 | 16 | 7 | 8 | 60 | 76.7 | | |
| at Stephen F. Austin | 12-17-07 | 61-49 | W | 25-67 | .373 | 2-15 | .133 | 9-12 | .750 | 24 | 37 | 61 | 42.6 | 25 | 8 | 28 | 8 | 8 | 61 | 75.3 | | |
| at Sam Houston St | 12/19/07 | 80-36 | W | 32-55 | .582 | 2-7 | .286 | 14-20 | .700 | 13 | 31 | 44 | 42.8 | 11 | 28 | 25 | 6 | 20 | 80 | 75.7 | | |
| vs Davidson | 12/28/07 | 66-59 | W | 27-65 | .415 | 2-11 | .182 | 10-17 | .588 | 17 | 25 | 42 | 42.7 | 11 | 14 | 14 | 8 | 15 | 66 | 74.9 | | |
| at Saint Joseph's | 12/29/07 | 69-71 | L | 25-69 | .362 | 5-17 | .294 | 14-20 | .700 | 20 | 25 | 45 | 42.9 | 13 | 12 | 10 | 4 | 6 | 69 | 74.5 | | |
| GEORGE WASHINGTON | 01/03/08 | 66-68 | L | 22-59 | .373 | 4-11 | .364 | 18-28 | .643 | 21 | 20 | 41 | 42.7 | 12 | 13 | 14 | 7 | 7 | 66 | 73.9 | | |
| at #2 TENNESSEE | 01/10/08 | 52-85 | L | 19-60 | .317 | 2-5 | .400 | 12-21 | .571 | 16 | 22 | 38 | 42.4 | 12 | 5 | 21 | 2 | 9 | 52 | 72.6 | | |
| GEORGIA | 01/13/08 | 82-52 | W | 28-61 | .459 | 6-10 | .600 | 20-23 | .870 | 13 | 28 | 41 | 42.4 | 11 | 16 | 11 | 4 | 9 | 82 | 73.1 | | |
| Auburn Tigers | | | | 1243 | | 468-1067 | .439 | 73-199 | .367 | 234-342 | .684 | 262 | 458 | 720 | 42.4 | 237 | 265 | 278 | 87 | 186 | 1243 | 73.1 |
| Opponents | | | | 977 | | 372-981 | .379 | 81-273 | .297 | 152-214 | .710 | 185 | 398 | 583 | 34.3 | 291 | 224 | 336 | 54 | 116 | 977 | 57.5 |

Games played: 17
Points/game: 73.1
FG Pct: 43.9
3FG Pct: 36.7
FT Pct: 68.4

Rebounds/game: 42.4
Assists/game: 15.6
Turnovers/game: 16.4
Assist/turnover ratio: 1.0
Steals/game: 10.9
Blocks/game: 5.1

2007-08 Auburn Box Scores

Game #1: Nov. 11, 2007 Auburn 91, Detroit 47 BEMC - Auburn, Ala.

| Auburn (91) | | | | | | | | | | | | |
|--------------|-------|------|-------|----|----|----|----|----|---|----|-----|--|
| Player | FG | 3fg | FT | RB | PF | PT | A | TO | B | S | MIN | |
| Jackson - F | 3-6 | 0-0 | 4-8 | 10 | 1 | 10 | 1 | 3 | 1 | 1 | 22 | |
| McCorvey - G | 7-12 | 4-8 | 0-0 | 3 | 0 | 18 | 4 | 1 | 1 | 3 | 28 | |
| S. Hobbs - G | 6-12 | 1-1 | 0-0 | 6 | 2 | 13 | 4 | 2 | 1 | 4 | 31 | |
| Bonner - G | 5-9 | 0-1 | 6-6 | 10 | 0 | 16 | 3 | 1 | 1 | 3 | 27 | |
| Boddie - G | 5-10 | 0-0 | 0-0 | 8 | 1 | 10 | 6 | 4 | 0 | 6 | 27 | |
| Smalley | 5-13 | 2-5 | 0-0 | 2 | 2 | 12 | 2 | 3 | 0 | 2 | 22 | |
| Ketcham | 1-2 | 1-2 | 1-2 | 1 | 0 | 4 | 1 | 1 | 0 | 1 | 9 | |
| Moore | 2-5 | 0-0 | 0-0 | 4 | 2 | 4 | 0 | 1 | 0 | 0 | 11 | |
| Wallace | 0-0 | 0-0 | 0-0 | 1 | 1 | 0 | 0 | 0 | 1 | 0 | 4 | |
| Ogubie | 0-2 | 0-0 | 2-2 | 3 | 0 | 2 | 2 | 0 | 0 | 0 | 13 | |
| Pickard | 1-2 | 0-0 | 0-0 | 2 | 0 | 2 | 0 | 1 | 0 | 0 | 6 | |
| TOTALS | 35-73 | 8-17 | 13-18 | 51 | 9 | 91 | 23 | 19 | 5 | 20 | 200 | |

| Detroit (47) | | | | | | | | | | | | |
|------------------|-------|------|-----|----|----|----|----|----|---|---|-----|--|
| Player | FG | 3fg | FT | RB | PF | PT | A | TO | B | S | MIN | |
| Hatter - F | 5-7 | 0-0 | 0-0 | 2 | 1 | 10 | 1 | 2 | 0 | 1 | 28 | |
| Brown - F | 1-5 | 1-3 | 0-0 | 1 | 2 | 3 | 1 | 5 | 0 | 0 | 20 | |
| Bruster - C | 5-8 | 0-0 | 0-0 | 3 | 3 | 10 | 1 | 4 | 1 | 0 | 21 | |
| Davis - G | 1-3 | 0-0 | 2-2 | 1 | 2 | 4 | 2 | 2 | 0 | 0 | 14 | |
| Stubblefield - G | 0-3 | 0-0 | 0-0 | 1 | 2 | 0 | 3 | 3 | 0 | 1 | 27 | |
| Mulroy | 2-4 | 1-2 | 1-1 | 0 | 1 | 6 | 0 | 0 | 0 | 0 | 14 | |
| Hungerford | 0-8 | 0-5 | 0-0 | 4 | 1 | 0 | 1 | 4 | 0 | 0 | 17 | |
| Hall | 3-9 | 2-5 | 0-0 | 2 | 0 | 8 | 7 | 2 | 0 | 3 | 21 | |
| McNally | 1-6 | 1-3 | 0-0 | 4 | 1 | 3 | 0 | 4 | 0 | 0 | 16 | |
| Dunlop | 1-4 | 1-4 | 0-0 | 1 | 1 | 3 | 0 | 2 | 0 | 0 | 10 | |
| Whittaker | 0-2 | 0-0 | 0-0 | 2 | 0 | 0 | 0 | 0 | 0 | 0 | 12 | |
| TOTALS | 19-59 | 6-22 | 3-3 | 28 | 14 | 47 | 16 | 28 | 1 | 5 | 200 | |

Halftime Score: Auburn 41, Detroit 17; Team Rebounds: Auburn 4; Detroit 0; Technicals: none; Officials: Dee Kantner, Kelly Johnson, Melissa Lewis.

Game #2: Nov. 14, 2007 Auburn 77, Troy 61 BEMC - Auburn, Ala.

| Auburn (77) | | | | | | | | | | | | |
|--------------|-------|------|-----|----|----|----|----|----|---|---|-----|--|
| Player | FG | 3fg | FT | RB | PF | PT | A | TO | B | S | MIN | |
| Jackson - F | 5-8 | 0-0 | 0-0 | 4 | 4 | 10 | 0 | 1 | 1 | 0 | 22 | |
| McCorvey - G | 4-7 | 2-5 | 1-1 | 1 | 0 | 11 | 1 | 2 | 0 | 0 | 27 | |
| S. Hobbs - G | 3-10 | 0-1 | 1-2 | 6 | 1 | 7 | 1 | 0 | 1 | 3 | 31 | |
| Bonner - G | 6-9 | 0-0 | 5-6 | 7 | 3 | 17 | 3 | 3 | 0 | 3 | 32 | |
| Boddie - G | 7-13 | 0-0 | 2-2 | 7 | 0 | 16 | 7 | 3 | 0 | 2 | 35 | |
| Smalley | 3-7 | 2-5 | 0-0 | 3 | 2 | 8 | 6 | 1 | 1 | 2 | 19 | |
| Moore | 0-2 | 0-0 | 0-0 | 1 | 0 | 0 | 0 | 2 | 0 | 0 | 5 | |
| Wallace | 0-0 | 0-0 | 0-0 | 0 | 0 | 0 | 0 | 0 | 0 | 0 | 1 | |
| TOTALS | 25-50 | 8-15 | 3-6 | 26 | 13 | 61 | 16 | 24 | 0 | 5 | 200 | |

| Troy (61) | | | | | | | | | | | | |
|---------------|-------|------|-----|----|----|----|----|----|---|---|-----|--|
| Player | FG | 3fg | FT | RB | PF | PT | A | TO | B | S | MIN | |
| Muse - F | 6-10 | 0-0 | 1-1 | 3 | 4 | 13 | 1 | 2 | 0 | 0 | 26 | |
| Reolph - F | 5-8 | 3-3 | 1-2 | 3 | 2 | 14 | 3 | 2 | 0 | 3 | 30 | |
| Roper - G | 1-2 | 1-2 | 0-0 | 5 | 2 | 3 | 5 | 7 | 0 | 0 | 37 | |
| Lewis - G | 5-12 | 3-7 | 0-0 | 4 | 2 | 13 | 2 | 2 | 0 | 0 | 40 | |
| Morrissey - G | 7-14 | 1-3 | 1-3 | 6 | 2 | 16 | 5 | 8 | 0 | 0 | 40 | |
| Shearing | 1-4 | 0-0 | 0-0 | 1 | 1 | 2 | 0 | 3 | 0 | 0 | 14 | |
| Davis | 0-0 | 0-0 | 0-0 | 0 | 0 | 0 | 0 | 0 | 0 | 2 | 11 | |
| Lawrence | 0-0 | 0-0 | 0-0 | 0 | 0 | 0 | 0 | 0 | 0 | 0 | 2 | |
| TOTALS | 25-50 | 8-15 | 3-6 | 26 | 13 | 61 | 16 | 24 | 0 | 5 | 200 | |

Halftime Score: Auburn 30, Troy 24; Team Rebounds: Auburn 1; Troy 1; Technicals: none; Officials: Joe Cunningham, John Morningstar, Yvette McKinney.

Game #3: Nov. 17, 2007 Auburn 93, UAB 66 BEMC - Auburn, Ala.

| Auburn (93) | | | | | | | | | | | | |
|---------------|-------|------|-------|----|----|----|----|----|---|----|-----|--|
| Player | FG | 3fg | FT | RB | PF | PT | A | TO | B | S | MIN | |
| Greenleaf - F | 1-4 | 0-0 | 1-2 | 9 | 2 | 3 | 2 | 1 | 1 | 3 | 31 | |
| McCorvey - G | 1-7 | 1-5 | 0-1 | 0 | 1 | 3 | 1 | 1 | 0 | 1 | 25 | |
| S. Hobbs - G | 5-9 | 0-0 | 2-5 | 4 | 3 | 12 | 3 | 2 | 0 | 2 | 23 | |
| Bonner - G | 10-16 | 0-1 | 11-12 | 12 | 3 | 31 | 2 | 3 | 2 | 1 | 28 | |
| Boddie - G | 3-7 | 0-0 | 4-6 | 4 | 2 | 10 | 9 | 4 | 0 | 4 | 28 | |
| Jackson | 3-5 | 0-0 | 2-4 | 4 | 1 | 8 | 1 | 1 | 0 | 0 | 19 | |
| Smalley | 8-10 | 4-6 | 0-0 | 2 | 1 | 20 | 1 | 6 | 0 | 0 | 25 | |
| Ketcham | 0-1 | 0-1 | 0-0 | 0 | 1 | 0 | 0 | 1 | 0 | 1 | 6 | |
| Moore | 1-2 | 0-0 | 2-6 | 0 | 4 | 4 | 0 | 2 | 0 | 0 | 11 | |
| Ogubie | 0-0 | 0-0 | 2-2 | 1 | 0 | 2 | 1 | 0 | 0 | 1 | 4 | |
| TOTALS | 32-61 | 5-13 | 24-38 | 43 | 18 | 93 | 20 | 21 | 3 | 13 | 200 | |

| UAB (66) | | | | | | | | | | | | |
|--------------|-------|------|-------|----|----|----|----|----|---|---|-----|--|
| Player | FG | 3fg | FT | RB | PF | PT | A | TO | B | S | MIN | |
| Rogers - F | 7-15 | 1-4 | 4-4 | 7 | 4 | 19 | 3 | 5 | 1 | 0 | 36 | |
| Berry - F | 0-2 | 0-0 | 0-0 | 3 | 3 | 0 | 2 | 2 | 1 | 1 | 28 | |
| Ingram - F | 2-8 | 0-1 | 2-2 | 4 | 5 | 6 | 1 | 5 | 0 | 0 | 29 | |
| McFadden - G | 8-12 | 1-3 | 7-8 | 4 | 3 | 24 | 2 | 5 | 1 | 1 | 37 | |
| Jones - G | 6-11 | 2-5 | 0-0 | 2 | 4 | 14 | 2 | 6 | 0 | 3 | 32 | |
| Peterson | 0-0 | 0-0 | 0-0 | 0 | 1 | 0 | 0 | 1 | 0 | 0 | 5 | |
| Murray | 0-1 | 0-0 | 0-0 | 0 | 1 | 0 | 0 | 1 | 0 | 0 | 4 | |
| Simpson | 0-0 | 0-0 | 0-0 | 1 | 0 | 0 | 0 | 0 | 0 | 0 | 11 | |
| Salaam | 1-4 | 1-4 | 0-0 | 0 | 1 | 3 | 0 | 1 | 0 | 0 | 6 | |
| Herron | 0-0 | 0-0 | 0-0 | 0 | 1 | 0 | 0 | 0 | 0 | 0 | 1 | |
| Scott | 0-2 | 0-2 | 0-1 | 1 | 3 | 0 | 0 | 1 | 0 | 0 | 11 | |
| TOTALS | 24-55 | 5-19 | 13-15 | 27 | 26 | 66 | 10 | 27 | 3 | 5 | 200 | |

Halftime Score: Auburn 45, UAB 27 Team Rebounds: Auburn 5; UAB 1; Technicals: none; Officials: Lisa Mattingly, Mary Day, Mike Riggs.

Game #4: Nov. 21, 2007 #24/25 Auburn 71, Oakland 63 Athletics Center O'Rena - Rochester, Mich.

| Auburn (71) | | | | | | | | | | | | |
|---------------|-------|------|-------|----|----|----|----|----|---|---|-----|--|
| Player | FG | 3fg | FT | RB | PF | PT | A | TO | B | S | MIN | |
| Greenleaf - F | 3-8 | 0-0 | 2-6 | 12 | 5 | 8 | 2 | 1 | 2 | 0 | 31 | |
| McCorvey - G | 1-5 | 1-4 | 3-4 | 3 | 1 | 6 | 2 | 2 | 0 | 0 | 30 | |
| S. Hobbs - G | 2-8 | 0-1 | 2-2 | 4 | 3 | 6 | 2 | 2 | 1 | 0 | 23 | |
| Bonner - G | 10-18 | 0-2 | 2-2 | 12 | 0 | 22 | 1 | 2 | 4 | 1 | 34 | |
| Boddie - G | 7-15 | 0-0 | 5-8 | 10 | 2 | 19 | 4 | 2 | 0 | 1 | 33 | |
| Jackson | 1-3 | 0-0 | 2-5 | 5 | 0 | 4 | 0 | 1 | 1 | 0 | 21 | |
| Smalley | 2-11 | 2-8 | 0-0 | 1 | 1 | 6 | 2 | 1 | 0 | 3 | 20 | |
| Wallace | 0-1 | 0-0 | 0-0 | 1 | 0 | 0 | 0 | 1 | 0 | 0 | 7 | |
| Ogubie | 0-1 | 0-0 | 0-0 | 0 | 0 | 0 | 0 | 0 | 0 | 0 | 1 | |
| TOTALS | 26-70 | 3-15 | 16-27 | 53 | 12 | 71 | 13 | 12 | 8 | 5 | 200 | |

| Oakland (63) | | | | | | | | | | | | |
|--------------|-------|------|------|----|----|----|----|----|---|---|-----|--|
| Player | FG | 3fg | FT | RB | PF | PT | A | TO | B | S | MIN | |
| Reising - F | 4-10 | 1-4 | 0-0 | 4 | 2 | 9 | 3 | 3 | 0 | 0 | 27 | |
| Pike - G | 6-17 | 3-10 | 0-1 | 4 | 5 | 15 | 2 | 3 | 0 | 2 | 33 | |
| Jeltema - G | 9-15 | 0-0 | 3-3 | 11 | 3 | 21 | 0 | 1 | 2 | 1 | 31 | |
| Terava - G | 1-8 | 0-1 | 0-0 | 4 | 1 | 2 | 8 | 2 | 0 | 1 | 35 | |
| Kidd - G | 1-7 | 0-2 | 0-0 | 5 | 4 | 2 | 2 | 1 | 0 | 0 | 25 | |
| Farrell | 0-0 | 0-0 | 0-0 | 0 | 0 | 0 | 0 | 1 | 0 | 0 | 1 | |
| Malone | 0-0 | 0-0 | 0-0 | 0 | 0 | 0 | 0 | 0 | 0 | 0 | 2 | |
| Patritto | 3-7 | 0-1 | 0-1 | 3 | 0 | 6 | 0 | 0 | 0 | 0 | 11 | |
| Carnago | 0-0 | 0-0 | 2-2 | 4 | 2 | 2 | 2 | 2 | 1 | 0 | 15 | |
| Greer | 2-4 | 0-0 | 2-4 | 5 | 2 | 6 | 0 | 1 | 0 | 1 | 18 | |
| Bryer | 0-0 | 0-0 | 0-0 | 0 | 0 | 0 | 0 | 0 | 0 | 0 | 2 | |
| TOTALS | 26-68 | 4-18 | 7-11 | 44 | 19 | 63 | 17 | 14 | 3 | 5 | 200 | |

Halftime Score: Auburn 34, Oakland 28 Team Rebounds: Auburn 1; Oakland 3; Technicals: none; Officials: John Whitson, Jesse Dickerson, Brian Enterline.

Game #5: Nov. 24, 2007 #24/25 Auburn 70, Winston-Salem St. 37 St. John Arena - Columbus, Ohio Buckeye Classic

| Auburn (70) | | | | | | | | | | | | |
|---------------|-------|------|-------|----|----|----|----|----|---|----|-----|--|
| Player | FG | 3fg | FT | RB | PF | PT | A | TO | B | S | MIN | |
| Jackson - F | 4-6 | 0-0 | 1-3 | 7 | 4 | 9 | 0 | 1 | 1 | 1 | 21 | |
| Greenleaf - F | 1-5 | 0-0 | 2-2 | 6 | 2 | 4 | 0 | 2 | 0 | 1 | 24 | |
| McCorvey - G | 3-7 | 0-3 | 0-0 | 2 | 2 | 6 | 2 | 5 | 0 | 3 | 28 | |
| S. Hobbs - G | 4-9 | 0-0 | 5-7 | 8 | 2 | 13 | 2 | 2 | 1 | 0 | 24 | |
| Boddie - G | 3-10 | 0-0 | 7-9 | 9 | 3 | 13 | 2 | 3 | 0 | 2 | 13 | |
| Smalley | 5-12 | 2-5 | 0-0 | 3 | 0 | 12 | 4 | 3 | 1 | 2 | 26 | |
| Ketcham | 0-4 | 0-4 | 2-2 | 1 | 2 | 2 | 1 | 1 | 0 | 1 | 13 | |
| Moore | 2-4 | 0-0 | 2-2 | 3 | 1 | 6 | 0 | 4 | 2 | 1 | 14 | |
| Wallace | 0-1 | 0-0 | 3-4 | 7 | 1 | 3 | 0 | 2 | 0 | 1 | 13 | |
| Ogubie | 1-1 | 0-0 | 0-0 | 0 | 1 | 2 | 0 | 1 | 0 | 0 | 5 | |
| Pickard | 0-0 | 0-0 | 0-0 | 1 | 0 | 0 | 0 | 0 | 0 | 0 | 4 | |
| TOTALS | 23-59 | 2-12 | 22-29 | 48 | 18 | 70 | 11 | 24 | 5 | 12 | 200 | |

| WSSU (37) | | | | | | | | | | | | |
|--------------|-------|------|------|----|----|----|---|----|---|----|-----|--|
| Player | FG | 3fg | FT | RB | PF | PT | A | TO | B | S | MIN | |
| Mobley - F | 1-2 | 0-0 | 0-0 | 12 | 3 | 2 | 1 | 4 | 0 | 0 | 24 | |
| Woods - F | 2-6 | 0-0 | 3-4 | 8 | 4 | 7 | 0 | 5 | 0 | 5 | 33 | |
| Byrd - G | 0-6 | 0-0 | 2-2 | 8 | 3 | 2 | 0 | 2 | 0 | 1 | 34 | |
| Bradford - G | 1-4 | 0-2 | 0-0 | 1 | 2 | 1 | 5 | 0 | 2 | 9 | | |
| Rector - G | 3-9 | 2-7 | 0-1 | 3 | 8 | 1 | 2 | 0 | 0 | 0 | 20 | |
| Kee | 3-11 | 3-8 | 0-0 | 5 | 3 | 9 | 0 | 3 | 0 | 2 | 31 | |
| Worthy | 1-5 | 0-0 | 3-4 | 3 | 2 | 5 | 0 | 3 | 0 | 1 | 20 | |
| Austin | 1-9 | 0-7 | 0-1 | 4 | 2 | 2 | 6 | 0 | 1 | 2 | 29 | |
| TOTALS | 12-52 | 5-24 | 8-11 | 32 | 22 | 37 | 5 | 31 | 0 | 12 | 200 | |

2007-08 Auburn Box Scores

Game #7: Nov. 30, 2007
#18/20 Auburn 64, UC Riverside 47
 Wells Fargo Arena - Tempe, Ariz.
 ASU Classic

Auburn (64)

| Player | FG | 3fg | FT | RB | PF | PT | A | TO | B | S | MIN |
|---------------|-------|------|------|----|----|----|----|----|---|----|-----|
| Greenleaf - F | 3-6 | 0-0 | 0-0 | 2 | 4 | 6 | 1 | 1 | 0 | 1 | 21 |
| McCorvey - G | 5-11 | 3-7 | 1-3 | 3 | 1 | 14 | 2 | 1 | 1 | 1 | 32 |
| S. Hobbs - G | 3-11 | 0-0 | 2-6 | 6 | 2 | 8 | 3 | 2 | 0 | 3 | 23 |
| Bonner - F | 3-7 | 0-0 | 3-3 | 12 | 1 | 9 | 3 | 3 | 2 | 2 | 29 |
| Boddie - G | 1-4 | 0-0 | 2-2 | 2 | 0 | 4 | 6 | 2 | 0 | 2 | 24 |
| Jackson | 2-3 | 0-0 | 0-0 | 1 | 3 | 4 | 2 | 1 | 1 | 0 | 16 |
| Smalley | 5-9 | 1-3 | 0-0 | 1 | 0 | 11 | 2 | 1 | 1 | 1 | 21 |
| Ketcham | 0-1 | 0-1 | 0-0 | 0 | 2 | 0 | 1 | 1 | 0 | 0 | 3 |
| Moore | 4-4 | 0-0 | 0-0 | 2 | 3 | 8 | 0 | 2 | 3 | 0 | 16 |
| Wallace | 0-0 | 0-0 | 0-0 | 3 | 0 | 0 | 0 | 1 | 0 | 0 | 8 |
| Ogubie | 0-1 | 0-0 | 0-0 | 0 | 1 | 0 | 0 | 0 | 0 | 0 | 3 |
| Pickard | 0-0 | 0-0 | 0-0 | 2 | 2 | 0 | 0 | 2 | 0 | 0 | 3 |
| TOTALS | 26-57 | 4-11 | 8-14 | 38 | 19 | 64 | 20 | 17 | 8 | 10 | 200 |

UC Riverside (47)

| Player | FG | 3fg | FT | RB | PF | PT | A | TO | B | S | MIN |
|--------------|-------|-----|-------|----|----|----|---|----|---|---|-----|
| Friend - F | 1-4 | 0-0 | 0-1 | 8 | 3 | 2 | 1 | 3 | 0 | 1 | 34 |
| Nkele - F | 4-13 | 1-5 | 8-11 | 13 | 1 | 17 | 2 | 3 | 4 | 2 | 33 |
| Lott - C | 4-10 | 0-0 | 1-3 | 8 | 2 | 9 | 1 | 2 | 0 | 0 | 26 |
| Gbewonyo - G | 3-12 | 0-3 | 1-2 | 3 | 0 | 7 | 3 | 3 | 1 | 0 | 33 |
| Foster - G | 0-1 | 0-0 | 2-2 | 2 | 3 | 2 | 1 | 3 | 0 | 1 | 16 |
| Morris | 1-1 | 0-0 | 0-0 | 1 | 0 | 2 | 1 | 0 | 0 | 2 | 8 |
| Glyniadaki | 0-1 | 0-0 | 0-0 | 0 | 0 | 0 | 0 | 0 | 0 | 0 | 3 |
| Waddell | 0-4 | 0-3 | 0-0 | 0 | 2 | 0 | 0 | 2 | 0 | 1 | 15 |
| Cox | 4-12 | 0-5 | 0-0 | 5 | 4 | 8 | 0 | 3 | 2 | 0 | 19 |
| Campillo | 4-12 | 0-0 | 0-0 | 1 | 1 | 0 | 0 | 0 | 0 | 2 | 13 |
| TOTALS | 17-58 | 1-6 | 12-19 | 44 | 16 | 47 | 9 | 19 | 7 | 9 | 200 |

Halftime Score: Auburn 32, UC Riverside 16 Team Rebounds: Auburn 2; UC Riverside 1; Technicals: None; Officials: Chuck Gonzalez, Penny Davis, Catherine Cornell.

Game #8: Dec. 2, 2007
#18/20 Auburn 75, #14/15 Arizona State
 Wells Fargo Arena - Tempe, Ariz.
 ASU Classic

Auburn (75)

| Player | FG | 3fg | FT | RB | PF | PT | A | TO | B | S | MIN |
|---------------|-------|------|------|----|----|----|----|----|---|---|-----|
| Greenleaf - F | 2-4 | 0-0 | 0-0 | 4 | 0 | 4 | 1 | 1 | 0 | 1 | 37 |
| McCorvey - G | 6-11 | 4-7 | 0-0 | 1 | 1 | 16 | 2 | 2 | 0 | 2 | 35 |
| S. Hobbs - G | 11-18 | 1-1 | 3-3 | 4 | 2 | 26 | 1 | 0 | 0 | 1 | 36 |
| Bonner - F | 5-13 | 0-0 | 3-3 | 13 | 4 | 13 | 3 | 2 | 2 | 5 | 28 |
| Boddie - G | 2-10 | 0-0 | 3-5 | 8 | 3 | 7 | 10 | 4 | 0 | 0 | 37 |
| Jackson | 0-2 | 0-0 | 0-2 | 1 | 3 | 0 | 0 | 1 | 0 | 0 | 9 |
| Smalley | 4-8 | 1-4 | 0-0 | 1 | 1 | 9 | 2 | 1 | 0 | 0 | 16 |
| Moore | 0-0 | 0-0 | 0-0 | 1 | 3 | 0 | 0 | 0 | 0 | 0 | 2 |
| TOTALS | 30-66 | 6-12 | 9-13 | 35 | 17 | 75 | 19 | 11 | 2 | 9 | 200 |

Arizona State (69)

| Player | FG | 3fg | FT | RB | PF | PT | A | TO | B | S | MIN |
|-------------|-------|------|-------|----|----|----|----|----|---|---|-----|
| Lacey - F | 8-17 | 2-3 | 2-2 | 8 | 2 | 20 | 0 | 2 | 0 | 0 | 32 |
| Dosty - C | 3-4 | 0-0 | 0-3 | 8 | 2 | 6 | 3 | 4 | 1 | 0 | 23 |
| Simon - G | 3-7 | 0-2 | 6-7 | 3 | 1 | 12 | 3 | 0 | 0 | 1 | 26 |
| January - G | 2-7 | 1-3 | 6-6 | 3 | 4 | 11 | 5 | 1 | 0 | 1 | 28 |
| Noe - G | 7-11 | 2-6 | 0-2 | 3 | 2 | 16 | 4 | 1 | 0 | 2 | 37 |
| Engelbrecht | 0-1 | 0-0 | 0-0 | 2 | 1 | 0 | 2 | 1 | 0 | 0 | 24 |
| Murphy | 2-4 | 0-0 | 0-0 | 2 | 3 | 4 | 1 | 3 | 0 | 0 | 14 |
| Thompson | 0-2 | 0-0 | 0-0 | 3 | 0 | 0 | 1 | 1 | 0 | 0 | 9 |
| Fage | 0-0 | 0-0 | 0-0 | 1 | 0 | 0 | 0 | 1 | 0 | 0 | 4 |
| Tobin | 0-1 | 0-0 | 0-0 | 1 | 0 | 0 | 0 | 0 | 0 | 0 | 3 |
| TOTALS | 25-54 | 5-14 | 14-20 | 36 | 15 | 69 | 19 | 14 | 1 | 4 | 200 |

Halftime Score: Auburn 34, Arizona State 29 Team Rebounds: Auburn 1; Arizona State 3; Technicals: None; Officials: Brenda Pantoja, Darren Krzesnik, Alejandro Moreno.

Game #9: Dec. 5, 2007
#14/14 Auburn 99, Colgate 47
 BEMC - Auburn, Ala.

Auburn (99)

| Player | FG | 3fg | FT | RB | PF | PT | A | TO | B | S | MIN |
|---------------|-------|-------|-------|----|----|----|----|----|---|----|-----|
| Greenleaf - F | 2-4 | 0-0 | 1-2 | 2 | 2 | 5 | 0 | 0 | 2 | 0 | 17 |
| McCorvey - G | 2-4 | 1-2 | 2-2 | 1 | 0 | 7 | 4 | 2 | 0 | 2 | 26 |
| S. Hobbs - G | 6-15 | 1-1 | 0-0 | 4 | 0 | 13 | 3 | 2 | 0 | 5 | 27 |
| Bonner - F | 6-9 | 1-2 | 1-1 | 5 | 0 | 14 | 0 | 1 | 1 | 1 | 15 |
| Boddie - G | 3-5 | 0-0 | 0-0 | 5 | 0 | 6 | 8 | 0 | 0 | 4 | 21 |
| Jackson | 2-4 | 0-0 | 3-5 | 4 | 1 | 7 | 0 | 1 | 2 | 2 | 16 |
| Smalley | 5-8 | 3-4 | 3-4 | 1 | 1 | 16 | 3 | 0 | 0 | 1 | 22 |
| Ketcham | 10-13 | 6-8 | 0-0 | 1 | 2 | 26 | 2 | 1 | 0 | 2 | 19 |
| Wallace | 0-0 | 0-0 | 0-0 | 2 | 1 | 0 | 0 | 1 | 1 | 0 | 13 |
| Ogubie | 2-3 | 0-0 | 1-2 | 3 | 1 | 5 | 0 | 1 | 0 | 0 | 11 |
| Pickard | 0-1 | 0-0 | 0-0 | 4 | 1 | 0 | 0 | 0 | 0 | 0 | 13 |
| TOTALS | 38-66 | 12-17 | 11-16 | 33 | 9 | 99 | 20 | 9 | 6 | 17 | 200 |

Colgate (47)

| Player | FG | 3fg | FT | RB | PF | PT | A | TO | B | S | MIN |
|---------------|-------|------|-----|----|----|----|---|----|---|---|-----|
| Gillard - F | 0-6 | 0-1 | 0-0 | 3 | 1 | 0 | 0 | 1 | 0 | 0 | 19 |
| Gier - F | 2-7 | 0-0 | 1-1 | 6 | 4 | 5 | 0 | 2 | 2 | 2 | 27 |
| Librizzi - F | 0-4 | 0-4 | 0-0 | 2 | 0 | 0 | 1 | 0 | 0 | 0 | 23 |
| Kozlowski - G | 1-3 | 0-1 | 2-2 | 3 | 0 | 4 | 2 | 10 | 0 | 1 | 33 |
| Garman - G | 4-9 | 2-5 | 0-0 | 3 | 4 | 10 | 2 | 3 | 0 | 0 | 23 |
| Martin | 2-6 | 0-0 | 0- | 4 | 2 | 4 | 2 | 2 | 0 | 0 | 20 |
| Brim | 1-3 | 0-0 | 0-0 | 2 | 0 | 2 | 1 | 0 | 0 | 0 | 9 |
| Jann | 2-4 | 1-1 | 0-0 | 2 | 2 | 5 | 1 | 2 | 0 | 0 | 19 |
| Moser | 6-10 | 0-0 | 5-6 | 4 | 3 | 17 | 0 | 6 | 0 | 0 | 27 |
| TOTALS | 18-52 | 3-12 | 8-9 | 33 | 16 | 47 | 9 | 26 | 2 | 2 | 200 |

Halftime Score: Auburn 49, Colgate 10 Team Rebounds: Auburn 2; Colgate 0; Technicals: None; Officials: Wesley Dean, June Courteau, Doc Sisk.

Game #10: Dec. 15, 2007
#12/11 Texas A&M 62, #14/14 Auburn 60
 Reed Arena - College Station, Texas

Texas A&M (60)

| Player | FG | 3fg | FT | RB | PF | PT | A | TO | B | S | MIN |
|--------------|-------|------|------|----|----|----|----|----|---|---|-----|
| Starks - G | 6-13 | 2-3 | 3-3 | 1 | 1 | 17 | 3 | 1 | 2 | 1 | 39 |
| Franklin - G | 2-9 | 2-5 | 2-4 | 4 | 1 | 8 | 5 | 2 | 0 | 0 | 35 |
| Micheaux - C | 2-6 | 0-0 | 0-2 | 4 | 4 | 1 | 3 | 3 | 0 | 2 | 21 |
| Horton - F | 0-0 | 0-0 | 0-0 | 2 | 1 | 0 | 0 | 0 | 0 | 0 | 8 |
| Gant - F | 8-12 | 0-0 | 0-0 | 9 | 1 | 16 | 1 | 5 | 0 | 3 | 36 |
| Buchanan | 2-5 | 0-0 | 1-1 | 2 | 3 | 5 | 0 | 2 | 1 | 1 | 12 |
| Atunrase | 2-6 | 0-1 | 1-1 | 3 | 0 | 5 | 2 | 3 | 1 | 1 | 23 |
| Reado | 3-6 | 0-0 | 1-1 | 8 | 2 | 7 | 0 | 1 | 0 | 0 | 20 |
| Colson | 0-3 | 0-1 | 0-0 | 1 | 1 | 0 | 0 | 0 | 1 | 0 | 6 |
| TOTALS | 25-60 | 4-10 | 8-12 | 37 | 15 | 62 | 12 | 17 | 8 | 6 | 200 |

Auburn (60)

| Player | FG | 3fg | FT | RB | PF | PT | A | TO | B | S | MIN |
|---------------|-------|------|-------|----|----|----|----|----|---|---|-----|
| McCorvey - G | 3-8 | 2-6 | 0-0 | 2 | 1 | 8 | 3 | 2 | 0 | 1 | 37 |
| Hobbs - G | 5-13 | 1-1 | 0-0 | 7 | 3 | 11 | 1 | 3 | 1 | 5 | 35 |
| Greenleaf - F | 4-8 | 0-0 | 5-6 | 9 | 3 | 13 | 0 | 1 | 5 | 0 | 35 |
| Bonner - G | 3-12 | 1-2 | 3-4 | 5 | 2 | 10 | 2 | 3 | 0 | 1 | 38 |
| Boddie - G | 5-12 | 0-1 | 2-2 | 6 | 3 | 12 | 5 | 5 | 0 | 1 | 37 |
| Jackson | 1-3 | 0-0 | 2-2 | 3 | 3 | 4 | 0 | 1 | 0 | 0 | 8 |
| Smalley | 0-0 | 0-0 | 0-0 | 1 | 0 | 0 | 0 | 1 | 0 | 0 | 3 |
| Moore | 1-1 | 0-0 | 0-0 | 1 | 2 | 2 | 0 | 0 | 1 | 0 | 7 |
| Wallace | 0-0 | 0-0 | 0-0 | 0 | 0 | 0 | 0 | 0 | 0 | 0 | 0+ |
| TOTALS | 22-57 | 4-10 | 12-14 | 37 | 17 | 60 | 11 | 16 | 7 | 8 | 200 |

Halftime Score: Texas A&M 39, Auburn 28; Team Rebounds: Auburn 1; Texas A&M 1; Technicals: None; Officials: Beverly Roberts, Clarke Stevens, Eric Brewton.

Game #11: Dec. 17, 2007
#16/14 Auburn 61, Stephen F. Austin 49
 Johnson Coliseum - Nacogdoches, Texas

Auburn (61)

| Player | FG | 3fg | FT | RB | PF | PT | A | TO | B | S | MIN |
|---------------|-------|------|------|----|----|----|---|----|---|---|-----|
| Greenleaf - F | 3-6 | 0-0 | 4-4 | 6 | 2 | 10 | 2 | 2 | 4 | 2 | 29 |
| McCorvey - G | 1-8 | 0-6 | 0-1 | 4 | 4 | 2 | 1 | 5 | 0 | 0 | 30 |
| Hobbs - G | 1-8 | 0-0 | 0-0 | 4 | 3 | 2 | 1 | 2 | 0 | 3 | 22 |
| Bonner - G | 7-17 | 0-1 | 3-4 | 17 | 3 | 17 | 1 | 4 | 0 | 0 | 32 |
| Boddie - G | 0-0 | 0-0 | 0-0 | 1 | 1 | 0 | 0 | 0 | 0 | 0 | 4 |
| Jackson | 5-9 | 0-0 | 0-0 | 3 | 1 | 10 | 0 | 0 | 0 | 0 | 16 |
| Smalley | 6-12 | 2-8 | 0-1 | 8 | 2 | 13 | 2 | 5 | 0 | 2 | 31 |
| Ketcham | 0-1 | 0-0 | 0-0 | 1 | 3 | 0 | 1 | 0 | 0 | 1 | 8 |
| Moore | 2-3 | 0-0 | 2-2 | 6 | 5 | 6 | 0 | 5 | 4 | 0 | 13 |
| Wallace | 0-0 | 0-0 | 0-0 | 2 | 0 | 0 | 0 | 2 | 0 | 0 | 4 |
| Ogubie | 0-2 | 0-0 | 0-0 | 2 | 1 | 0 | 0 | 0 | 0 | 0 | 7 |
| Pickard | 0-1 | 0-0 | 0-0 | 0 | 0 | 0 | 0 | 0 | 0 | 0 | 4 |
| TOTALS | 25-67 | 2-15 | 9-12 | 61 | 25 | 61 | 8 | 28 | 8 | 8 | 200 |

Stephen F. Austin (49)

| Player | FG | 3fg | FT | RB | PF | PT | A | TO | B | S | MIN |
|-------------|-------|------|-------|----|----|----|---|----|---|----|-----|
| Davis - F | 0-2 | 0-0 | 0-0 | 5 | 3 | 0 | 1 | 2 | 0 | 2 | 37 |
| Ford - F | 3-13 | 0-1 | 2-5 | 2 | 3 | 8 | 0 | 0 | 0 | 1 | 34 |
| Gaines - G | 3-9 | 2-8 | 2-2 | 3 | 10 | 0 | 2 | 0 | 1 | 2 | 26 |
| Cormier - G | 5-14 | 0-1 | 5-6 | 6 | 2 | 15 | 0 | 5 | 1 | 2 | 32 |
| Carr - G | 4-13 | 1-7 | 6-7 | 6 | 4 | 15 | 3 | 1 | 7 | 40 | |
| Goodner | 0-5 | 0-1 | 1-2 | 2 | 1 | 1 | 0 | 1 | 0 | 0 | 21 |
| Drennan | 0-1 | 0-0 | 0-0 | 1 | 0 | 0 | 0 | 1 | 0 | 0 | 10 |
| TOTALS | 15-57 | 3-18 | 16-22 | 30 | 16 | 49 | 6 | 16 | 2 | 13 | 200 |

Halftime Score: Auburn 27, Stephen F. Austin 16; Team Rebounds: Auburn 3, Stephen F. Austin 0; Technicals: None; Officials: Martin Ramsey, Ron Harris, Michelle Eglinger.

Game #12: Dec. 19, 2007
#16/16 Auburn 80, Sam Houston St. 36
 Johnson Coliseum - Huntsville, Texas

Auburn (80)

2007-08 Auburn Box Scores

Game #13: Dec. 28, 2007
#15/15 Auburn 66, Davidson 59
Alumni Memorial FH - Philadelphia, Pa.
Hawk Classic

Auburn (66)

| Player | FG | 3fg | FT | RB | PF | PT | A | TO | B | S | MIN |
|---------------|-------|------|-------|----|----|----|----|----|---|----|-----|
| Jackson - F | 1-4 | 0-0 | 0-0 | 5 | 1 | 2 | 0 | 0 | 1 | 0 | 13 |
| Greenleaf - F | 3-7 | 0-0 | 1-2 | 7 | 3 | 7 | 1 | 3 | 1 | 0 | 34 |
| McCorvey - G | 4-8 | 1-4 | 4-4 | 3 | 1 | 13 | 6 | 0 | 1 | 4 | 35 |
| Hobbs - G | 6-15 | 0-1 | 0-3 | 7 | 2 | 12 | 3 | 2 | 2 | 5 | 34 |
| Bonner - G | 4-12 | 0-1 | 1-4 | 12 | 2 | 9 | 1 | 4 | 2 | 3 | 38 |
| Smalley | 7-14 | 1-5 | 0-0 | 2 | 2 | 15 | 3 | 5 | 1 | 3 | 30 |
| Moore | 0-1 | 0-0 | 0-0 | 1 | 0 | 0 | 0 | 0 | 0 | 0 | 2 |
| Wallace | 0-0 | 0-0 | 0-0 | 0 | 0 | 0 | 0 | 0 | 0 | 0 | 1 |
| Ogubie | 2-4 | 0-0 | 4-4 | 2 | 0 | 8 | 0 | 0 | 0 | 0 | 13 |
| TOTALS | 27-65 | 2-11 | 10-17 | 42 | 11 | 66 | 14 | 14 | 8 | 15 | 200 |

Davidson (36)

| Player | FG | 3fg | FT | RB | PF | PT | A | TO | B | S | MIN |
|--------------|-------|------|-----|----|----|----|----|----|---|---|-----|
| Robinson - F | 2-5 | 0-0 | 3-4 | 8 | 0 | 7 | 2 | 4 | 0 | 1 | 28 |
| Paquette - F | 0-2 | 0-0 | 0-0 | 0 | 1 | 0 | 1 | 1 | 0 | 0 | 11 |
| Housley - G | 4-14 | 2-7 | 1-4 | 3 | 4 | 11 | 4 | 1 | 0 | 0 | 25 |
| Gossie - G | 3-6 | 1-1 | 0-0 | 5 | 1 | 7 | 3 | 3 | 1 | 0 | 31 |
| Hemerka - G | 6-13 | 1-7 | 0-0 | 6 | 3 | 13 | 1 | 6 | 0 | 0 | 33 |
| Laune | 1-2 | 1-2 | 0-0 | 0 | 2 | 3 | 0 | 0 | 0 | 0 | 5 |
| Thompson | 1-4 | 0-0 | 0-0 | 2 | 2 | 3 | 2 | 0 | 4 | 3 | 31 |
| Halberleben | 5-12 | 0-0 | 0-1 | 4 | 2 | 10 | 3 | 1 | 0 | 0 | 18 |
| Cary | 3-5 | 0-0 | 0-0 | 4 | 1 | 6 | 0 | 2 | 0 | 0 | 18 |
| TOTALS | 25-63 | 5-17 | 4-9 | 39 | 16 | 59 | 17 | 20 | 1 | 5 | 200 |

Halftime Score: Davidson 32, Auburn 30; Team Rebounds: Auburn 3, Davidson 4; Technicals: None; Officials: Joseph Vaszily, Kevin Farlow, Carmen Portorreal.

Game #16: Jan. 10, 2008
No. 2/2 Tennessee 85, No. 22/20 Auburn 52
Thompson-Boling Arena - Knoxville, Tenn.

Tennessee (85)

| Player | FG | 3fg | FT | RB | PF | PT | A | TO | B | S | MIN |
|----------------|-------|------|-------|----|----|----|----|----|----|----|-----|
| Parker - F | 7-11 | 1-1 | 3-4 | 11 | 0 | 18 | 0 | 1 | 3 | 3 | 22 |
| Anosike - C | 7-16 | 0-0 | 6-8 | 12 | 3 | 20 | 4 | 3 | 2 | 5 | 30 |
| Bobbitt - G | 3-7 | 2-5 | 0-0 | 2 | 3 | 8 | 4 | 3 | 1 | 2 | 31 |
| Bjorklund - G | 3-8 | 1-4 | 0-0 | 3 | 0 | 7 | 2 | 0 | 0 | 0 | 25 |
| Hornbuckle - G | 3-5 | 0-1 | 1-3 | 6 | 0 | 7 | 6 | 0 | 2 | 2 | 24 |
| Smallbone | 3-4 | 3-4 | 0-0 | 3 | 0 | 9 | 0 | 2 | 0 | 0 | 18 |
| Baugh | 2-7 | 0-0 | 0-0 | 5 | 5 | 4 | 1 | 2 | 2 | 0 | 11 |
| Auguste | 2-7 | 1-3 | 2-2 | 2 | 4 | 7 | 1 | 2 | 0 | 1 | 22 |
| Fuller | 2-8 | 1-3 | 0-0 | 4 | 2 | 5 | 1 | 1 | 2 | 2 | 17 |
| TOTALS | 32-73 | 9-21 | 12-17 | 50 | 17 | 85 | 19 | 14 | 12 | 15 | 200 |

Auburn (52)

| Player | FG | 3fg | FT | RB | PF | PT | A | TO | B | S | MIN |
|---------------|-------|-----|-------|----|----|----|---|----|---|---|-----|
| Greenleaf - F | 0-4 | 0-0 | 0-2 | 6 | 3 | 0 | 0 | 1 | 2 | 2 | 27 |
| Bonner - F | 6-17 | 0-0 | 7-9 | 5 | 1 | 19 | 0 | 5 | 0 | 0 | 39 |
| McCorvey - G | 2-7 | 2-3 | 0-0 | 1 | 0 | 6 | 1 | 3 | 0 | 2 | 27 |
| Smalley - G | 2-9 | 0-2 | 0-2 | 6 | 1 | 4 | 4 | 9 | 0 | 1 | 30 |
| Hobbs - G | 6-13 | 0-0 | 0-0 | 6 | 2 | 12 | 0 | 3 | 0 | 1 | 36 |
| Jackson | 2-6 | 0-0 | 3-6 | 7 | 4 | 8 | 0 | 0 | 0 | 2 | 26 |
| Moore | 1-4 | 0-0 | 1-2 | 1 | 1 | 3 | 0 | 0 | 0 | 1 | 13 |
| Ogubie | 0-0 | 0-0 | 0-0 | 0 | 0 | 0 | 0 | 0 | 0 | 0 | 2 |
| TOTALS | 19-60 | 2-5 | 12-21 | 38 | 12 | 52 | 5 | 21 | 2 | 9 | 200 |

Halftime Score: Tennessee 48, Auburn 27; Team Rebounds: Auburn 5, Tennessee 3; Technicals: None; Officials: Lawson Newton, Roy Gulbeyan, Jesse Dickerson.

Game #14: Dec. 29, 2007
Saint Joseph's 71, No.15/15 Auburn 69
Alumni Memorial FH - Philadelphia, Pa.
Hawk Classic

Saint Joseph's (71)

| Player | FG | 3fg | FT | RB | PF | PT | A | TO | B | S | MIN |
|------------|-------|-------|-----|----|----|----|----|----|---|---|-----|
| Ford - F | 4-10 | 0-0 | 0-0 | 2 | 5 | 8 | 3 | 0 | 1 | 0 | 22 |
| Acker - C | 8-14 | 0-0 | 0-1 | 8 | 3 | 16 | 2 | 2 | 2 | 1 | 32 |
| Wold - G | 5-9 | 5-8 | 2-3 | 6 | 2 | 17 | 5 | 2 | 2 | 0 | 34 |
| McDade - G | 2-5 | 2-3 | 0-0 | 3 | 1 | 6 | 4 | 1 | 0 | 1 | 38 |
| Gomez - G | 3-9 | 0-1 | 2-3 | 4 | 3 | 8 | 6 | 3 | 0 | 1 | 28 |
| Johnson | 2-5 | 0-0 | 1-2 | 4 | 2 | 5 | 2 | 1 | 0 | 0 | 19 |
| Loschiavo | 4-4 | 3-3 | 0-0 | 2 | 1 | 11 | 2 | 1 | 0 | 0 | 20 |
| Logue | 0-3 | 0-0 | 0-0 | 0 | 0 | 0 | 0 | 1 | 0 | 0 | 7 |
| TOTALS | 28-59 | 10-15 | 5-9 | 34 | 17 | 71 | 24 | 11 | 5 | 3 | 200 |

Auburn (69)

| Player | FG | 3fg | FT | RB | PF | PT | A | TO | B | S | MIN |
|---------------|-------|------|-------|----|----|----|----|----|---|---|-----|
| Greenleaf - F | 0-1 | 0-0 | 0-0 | 10 | 4 | 0 | 0 | 1 | 2 | 0 | 35 |
| McCorvey - G | 3-9 | 2-4 | 0-1 | 3 | 1 | 8 | 4 | 0 | 0 | 2 | 38 |
| Smalley - G | 5-17 | 2-9 | 1-1 | 3 | 3 | 13 | 2 | 2 | 0 | 1 | 39 |
| Hobbs - G | 5-15 | 0-2 | 2-2 | 3 | 2 | 12 | 3 | 2 | 0 | 1 | 35 |
| Bonner - G | 9-21 | 1-2 | 11-16 | 19 | 2 | 30 | 3 | 1 | 1 | 2 | 37 |
| Jackson | 1-2 | 0-0 | 0-0 | 1 | 0 | 2 | 0 | 0 | 0 | 0 | 7 |
| Moore | 0-0 | 0-0 | 0-0 | 1 | 0 | 0 | 0 | 2 | 0 | 0 | 3 |
| Ogubie | 1-2 | 0-0 | 0-0 | 1 | 1 | 2 | 0 | 2 | 1 | 0 | 4 |
| Pickard | 1-2 | 0-0 | 0-0 | 1 | 0 | 2 | 0 | 0 | 0 | 0 | 2 |
| TOTALS | 25-69 | 5-17 | 14-20 | 45 | 13 | 69 | 12 | 10 | 4 | 6 | 200 |

Halftime Score: Saint Joseph's 41, Auburn 29; Team Rebounds: Auburn 5, Saint Joseph's 1; Technicals: None; Officials: Dennis DeMayo, Joseph Vaszily, Kevin Farlow.

Game #17: Jan. 10, 2008
No. 22/20 Auburn 82, No. 10 Georgia 52
BEMC - Auburn, Ala.

Auburn (82)

| Player | FG | 3fg | FT | RB | PF | PT | A | TO | B | S | MIN |
|---------------|-------|------|-------|----|----|----|----|----|---|---|-----|
| Greenleaf - F | 2-5 | 0-0 | 3-4 | 5 | 3 | 7 | 2 | 2 | 0 | 0 | 33 |
| Bonner - F | 7-14 | 2-3 | 5-6 | 13 | 0 | 21 | 2 | 1 | 2 | 2 | 35 |
| McCorvey - G | 4-9 | 1-3 | 3-3 | 6 | 1 | 12 | 2 | 0 | 3 | 3 | 33 |
| Smalley - G | 5-10 | 2-3 | 1-2 | 4 | 3 | 13 | 5 | 3 | 2 | 2 | 35 |
| Hobbs - G | 5-13 | 0-0 | 2-2 | 4 | 2 | 12 | 3 | 3 | 0 | 1 | 35 |
| Jackson | 4-8 | 0-0 | 4-4 | 3 | 1 | 12 | 2 | 0 | 0 | 1 | 20 |
| Ketcham | 1-2 | 1-1 | 2-2 | 0 | 0 | 5 | 0 | 0 | 0 | 0 | 4 |
| Moore | 0-0 | 0-0 | 0-0 | 0 | 1 | 0 | 0 | 0 | 0 | 0 | 3 |
| Wallace | 0-0 | 0-0 | 0-0 | 0 | 0 | 0 | 0 | 0 | 0 | 0 | 1 |
| Ogubie | 0-0 | 0-0 | 0-0 | 0 | 0 | 0 | 0 | 0 | 0 | 0 | 1 |
| TOTALS | 28-61 | 6-10 | 20-23 | 41 | 11 | 82 | 16 | 11 | 4 | 9 | 200 |

Georgia (52)

| Player | FG | 3fg | FT | RB | PF | PT | A | TO | B | S | MIN |
|--------------|-------|------|-------|----|----|----|---|----|---|---|-----|
| Robinson - F | 1-9 | 0-0 | 0-0 | 7 | 4 | 2 | 1 | 1 | 3 | 0 | 21 |
| Humphrey - F | 2-8 | 0-0 | 5-6 | 4 | 4 | 9 | 0 | 1 | 0 | 0 | 23 |
| Houts - G | 4-7 | 0-1 | 7-7 | 3 | 1 | 15 | 1 | 9 | 0 | 1 | 36 |
| Puleo - G | 2-6 | 2-6 | 1-2 | 4 | 3 | 7 | 1 | 0 | 0 | 0 | 31 |
| Darrah - G | 1-7 | 1-3 | 2-2 | 3 | 0 | 5 | 0 | 2 | 0 | 1 | 31 |
| Lee | 0-0 | 0-0 | 0-0 | 2 | 3 | 0 | 0 | 1 | 0 | 0 | 13 |
| Taylor | 2-6 | 0-0 | 0-0 | 3 | 0 | 4 | 1 | 0 | 1 | 0 | 16 |
| Rhoden | 1-5 | 0-1 | 0-0 | 0 | 0 | 2 | 1 | 1 | 0 | 0 | 9 |
| Marshall | 1-3 | 0-0 | 0-0 | 0 | 1 | 2 | 0 | 1 | 0 | 1 | 8 |
| Carter | 2-4 | 0-1 | 0-0 | 2 | 0 | 4 | 0 | 0 | 0 | 0 | 5 |
| Rowsey | 1-1 | 0-0 | 0-0 | 1 | 1 | 2 | 0 | 0 | 0 | 0 | 7 |
| TOTALS | 17-56 | 3-12 | 15-17 | 32 | 17 | 52 | 5 | 16 | 4 | 3 | 200 |

Halftime Score: Auburn 42, Georgia 29; Team Rebounds: Auburn 2, Georgia 2; Technicals: None; Officials: Beverly Roberts, John Morningstar, Metta Roberts.

Game #15: Jan. 3, 2008
No. 20/19 George Washington 68,
No.18/18 Auburn 66
BEMC - Auburn, Ala.

George Washington (68)

| Player | FG | 3fg | FT | RB | PF | PT | A | TO | B | S | MIN |
|----------------|-------|------|------|----|----|----|----|----|---|---|-----|
| Allen - F | 2-6 | 0-2 | 0-0 | 2 | 5 | 4 | 2 | 4 | 1 | 2 | 28 |
| Parrish - F | 2-7 | 2-4 | 0-0 | 7 | 1 | 6 | 1 | 3 | 0 | 1 | 37 |
| Adair, Je. - C | 6-11 | 0-0 | 3-4 | 5 | 3 | 15 | 2 | 2 | 2 | 0 | 29 |
| Beck - G | 6-11 | 3-6 | 1-1 | 4 | 1 | 16 | 7 | 2 | 0 | 3 | 40 |
| Lawrence - G | 6-8 | 1-1 | 5-5 | 1 | 4 | 18 | 4 | 5 | 0 | 1 | 35 |
| Adair, Ja. | 2-6 | 0-0 | 0-1 | 1 | 5 | 4 | 0 | 0 | 1 | 0 | 16 |
| Munro | 1-2 | 0-1 | 0-0 | 0 | 1 | 2 | 0 | 0 | 0 | 0 | 4 |
| Bates | 0-0 | 0-0 | 0-0 | 2 | 0 | 0 | 0 | 0 | 0 | 0 | 6 |
| Steele | 1-2 | 1-1 | 0-0 | 2 | 1 | 3 | 0 | 0 | 0 | 0 | 5 |
| TOTALS | 26-53 | 7-15 | 9-11 | 31 | 21 | 68 | 16 | 16 | 4 | 7 | 200 |

Auburn (66)

| Player | FG | 3fg | FT | RB | PF | PT | A | TO | B | S | MIN |
|---------------|-------|------|-------|----|----|----|----|----|---|---|-----|
| Greenleaf - F | 3-8 | 0-0 | 0-0 | 4 | 1 | 6 | 0 | 0 | 0 | 1 | 28 |
| McCorvey - G | 2-9 | 1-5 | 4-6 | 5 | 1 | 9 | 4 | 5 | 0 | 0 | 35 |
| Smalley - G | 7-10 | 3-6 | 0-0 | 9 | 1 | 17 | 5 | 3 | 0 | 1 | 37 |
| Hobbs - G | 4-9 | 0-0 | 4-6 | 3 | 2 | 12 | 1 | 2 | 0 | 2 | 28 |
| Bonner - G | 4-14 | 0-0 | 6-10 | 12 | 2 | 14 | 1 | 1 | 3 | 1 | 37 |
| Jackson | 2-7 | 0-0 | 3-4 | 3 | 2 | 7 | 2 | 2 | 1 | 2 | 21 |
| Ketcham | 0-1 | 0-0 | 0-0 | 0 | 0 | 0 | 0 | 1 | 0 | 0 | 2 |
| Moore | 0-1 | 0-0 | 1-2 | 4 | 3 | 1 | 0 | 0 | 3 | 0 | 12 |
| TOTALS | 22-59 | 4-11 | 18-28 | 41 | 12 | 66 | 13 | 14 | 7 | 7 | 200 |

Halftime Score: George Washington 33, Auburn 30; Team Rebounds: Auburn 3, George Washington 1; Technicals: None; Officials: Lisa Mattingly, Tina Napier, Joe Cunningham.