

# AUBURN



## WOMEN'S GOLF

2011 - 2012

## GOLF GUIDE



**MEDIA INFORMATION**



**Kirk Sampson**  
Assistant AD / Media Relations



**Chuck Gallina**  
Director of Media Relations



**Matt Crouch**  
Associate Director



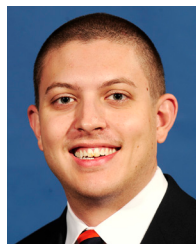
**Dan Froehlich**  
Associate Director



**Wes Todd**  
Associate Director



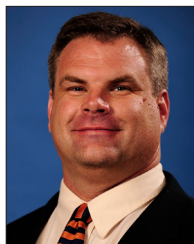
**Bob Grant**  
Assistant Director



**Taylor Bryan**  
Assistant



**Kathy Harker**  
Administrative Assistant



**Todd Van Emst**  
Photographer



**Steve Sain**  
Videographer

**MEDIA OUTLETS**

**Associated Press**  
P 334.262.5947 • F 334.265.7177

**Birmingham News**  
P 205.325.2431 • F 205.325.2425

**Montgomery Advertiser**  
P 334.261.1522 • F 334.261.1548

**Huntsville Times**  
P 256.532.4430 • F 256.532.4420

**Mobile Register**  
P 800.239.1340 • F 251.219.5797

**Opelika-Auburn News**  
P 334.749.6271 • F 334.749.1228

**Auburn Plainsman**  
P 334.844.9104 • F 334.844.9114

**Anniston Star**  
P 256.235.3576 • F 256.241.1991

**Columbus Ledger-Enquirer**  
P 706.571.8500 • F 706.576.6290

**Tiger Communications**  
P 334.887.9999 • F 334.826.9599

**Inside The Auburn Tigers (autigers.com)**  
P 334.887.7100 • F 334.887.7175

**RIVAL.S.COM (AuburnSports.com)**  
P 334.201.3301

**Alabama's ABC (Ch. 33/40) • Birmingham**  
P 205.982.3988 • F 205.982.3942

**WBRC (Ch. 6) (Fox) Birmingham**  
P 205.583.4345 • F 205.583.4356

**WVTM (Ch. 13) (NBC) Birmingham**  
P 205.558.7348 • F 205.323.3314

**WIAT (Ch. 42) (CBS) Birmingham**  
P 205.322.4200 • F 205.320.2722

**WAAY (Ch. 31) (ABC) Huntsville**  
P 256.533.3131 • F 256.533.5191

**WAFF (Ch. 48) (NBC) Huntsville**  
P 256.533.6397 • F 256.534.4101

**WHNT (Ch. 19) (CBS) Huntsville**  
P 256.535.9287 • F 256.535.4503

**WALA (Ch. 10) (NBC) Mobile**  
P 251.434.1084 • F 251.434.1023

**WKRQ (Ch. 15) (CBS) Mobile**  
P 251.662.3003 • F 251.662.3071

**WAKA (Ch. 8) (CBS) Montgomery**  
P 334.420.3358 • F 334.244.7859

**WNCF (Ch. 32) (ABC) Montgomery**  
P 334.270.3200 • F 334.271.6248

**WSFA (Ch. 12) (NBC) Montgomery**  
P 334.613.8299 • F 334.613.8303

**WRBL (Ch. 3) (CBS) Columbus**  
P 706.324.6397 • F 706.323.0841

**WTVM (Ch. 9) (ABC) Columbus**  
P 706.322.5734 • F 706.327.0179

**AUBURN MEDIA RELATIONS**

The Auburn University media relations staff hopes that you will find this publication useful while covering Auburn women's golf during the 2011-12 season. If you should require further information and/or have any special media requests please contact Matt Crouch in the media relations office at 334.844.9709. Thank you for your interest in covering Auburn women's golf this season.

**INTERVIEW REQUESTS**

Interviews are granted to those parties that provide the media relations office with at least 24 hours notice to Matt Crouch at 334.844.9709. Interviews can be arranged depending on the student-athletes/coaches availability and are conducted in the media relations office, in the coaches office or at the golf course.

**VIDEO SERVICES**

FTP uploads of selected Auburn women's golf material are available for the media. A number of studio and satellite services may be arranged for electronic media by calling Steve Sain in the Auburn media relations office at 334.844.9809.

**AUBURN ON THE WORLD WIDE WEB**

Complete athlete and coaches bios, results, schedules, releases and photos of the Auburn women's golf team and the Tigers' other sports can be found by accessing the official Auburn athletic web site at [www.Auburn-Tigers.com](http://www.Auburn-Tigers.com).

**MEDIA RELATIONS STAFF**

Assistant AD/Media Relations ..... Kirk Sampson  
 Media Relations Director ..... Chuck Gallina  
 Associate Director/W. Golf Contact ..... Matt Crouch  
 Secondary W. Golf Contact ..... Morgan Seeley  
 Associate Director ..... Dan Froehlich  
 Associate Director ..... Wes Todd  
 Assistant Director ..... Bob Grant  
 Assistant ..... Taylor Bryan  
 Crouch's Office Phone ..... 334.844.9709  
 Crouch's Cell Phone ..... 334.740.4109  
 Crouch's Email ..... [mrcouch@auburn.edu](mailto:mrcouch@auburn.edu)  
 Seeley's Cell Phont ..... 256.520.0941  
 Seeley's Email ..... [mss0010@auburn.edu](mailto:mss0010@auburn.edu)  
 Mailing Address ..... P.O. Box 351  
 ..... Auburn, AL 36831  
 Overnight Address ..... Athletic Complex  
 ..... 392 S. Donahue Drive  
 ..... Auburn, AL 36849

Media Relations Phone: (334) 844-9800  
 Media Relations Fax: (334) 844-9807

[www.AuburnTigers.com](http://www.AuburnTigers.com)





### 2011-12 Auburn Women's Golf Team:

Sitting from left: Haley Wilson, Patricia Sanz and Madison Overbey. Standing from left: Head Coach Kim Evans, Marta Sanz, Diana Fernandez, Carlie Yadloczky, Lakin Eddy, Nicole Quinn, Victoria Trapani and Assistant Coach Margaret Shirtley.

## 2011-12 ROSTER

Name	Year	Hometown	Previous School
Lakin Eddy	Fr.	Hoover, Ala.	Spain Park
Diana Fernandez	So.	Asuncion, Paraguay	Immaculado Corazon de Maria
Madison Overbey	Sr.	High Point, N.C.	Wesleyan Christian
Nicole Quinn	Fr.	Windermere, Fla.	The First Academy
Marta Sanz	So.	Madrid, Spain	Sek Ciudadcampo
Patricia Sanz	Sr.	Madrid, Spain	Sek Ciudadcampo
Victoria Trapani	Fr.	Hollywood, Fla.	St. Thomas Aquinas
Haley Wilson	Sr.	Ft. Mitchell, Ala.	Central
Carlie Yadloczky	Jr.	Casselberry, Fla.	Lake Howell

**Head Coach:** Kim Evans (18th Season)

**Assistant Coach:** Margaret Shirley (1st Season)

### ROSTER BREAKDOWN

#### BY CLASS:

Seniors (3): Madison Overbey, Patricia Sanz, Haley Wilson

Juniors (1): Carlie Yadloczky

Sophomore (2): Diana Fernandez, Marta Sanz

Freshmen (3): Lakin Eddy, Nicole Quinn, Victoria Trapani

#### BY STATS/COUNTRY:

Alabama (2): Lakin Eddy, Haley Wilson

Florida (3): Nicole Quinn, Victoria Tapani, Carlie Yadloczky

North Carolina (1): Madison Overbey

Paraguay (1): Diana Fernandez

Spain (2): , Marta Sanz, Patricia Sanz



**KIM EVANS**  
HEAD COACH  
18TH SEASON

**THE EVANS FILE**

**HOMETOWN**  
DECATUR, ALA.

**EDUCATION**  
AUBURN, 1981  
BACHELOR OF SCIENCE  
IN PHYSICAL EDUCATION

**COACHING EXPERIENCE**  
AUBURN HEAD COACH(1994-PESENT)  
AUBURN, ALA.  
GEORGIA TECH MEN'S ASSISTANT  
COACH(1988-94)  
ATLANTA, GA.

**OTHER PROFESSIONAL EXPERIENCE**  
ATLANTA JUNIOR GOLF ASSOCIATION:  
ASSISTANT EXECUTIVE DIRECTOR  
SANDESTIN RESORT  
GOLD PROFESSIONAL  
PGA MEMBER

**PLAYING EXPERIENCE**  
AUBURN UNIVERSITY (1978 - 81)  
FOUR-YEAR LETTERWINNER

- COMPILED A 2,210-728-36 (.749) RECORD THROUGH 192 TOURNAMENTS IN 17 SEASONS AS HEAD COACH FOR THE TIGERS
- INDUCTED INTO NATIONAL GOLF COACHES HALL OF FAME IN 2008
- AWARDED THE 2008 HORTON SMITH AWARD BY THE DIXIE SECTION OF THE PGA
- 91 TOP-THREE TOURNAMENT FINISHES
- 35 FIRST PLACE TOURNAMENT FINISHES
- 2002 NGCA NATIONAL COACH-OF-THE-YEAR
- LED TIGERS TO 13 NCAA CHAMPIONSHIP APPEARANCES, INCLUDING SIX TOP-10 FINISHES
- COACHED 11 ALL-AMERICANS TO 26 HONORS
- COACHED 16 ALL-SEC HONOREES FOR A TOTAL OF 49 AWARDS
- COACHED SEVEN SEC PLAYERS OF THE YEAR
- COACHED SIX SEC FRESHMEN OF THE YEAR AND ONE NGCA FRESHMAN OF THE YEAR
- COACHED RUNNER-UP TEAM IN THE 2002 NCAA CHAMPIONSHIP PRECEDED BY FINISHING FOURTH IN 2001 AND SIXTH IN 2000, THIRD PLACE IN 2005
- FIRST-EVER NO. 1 RANKING IN AUBURN HISTORY IN 2001-02
- SEVEN SEC CHAMPIONSHIP TITLES (1996, 2000, 2003, 2005, 2006, 2009 AND 2011)
- FOUR-TIME SEC-COACH OF THE YEAR (1996, 2001, 2002 AND 2009)
- 1996 SOUTH DISTRICT COACH OF THE YEAR
- NCAA SOUTH DISTRICT SELECTION COMMITTEE, 1995-96
- SELECTED BY THE PGA OF AMERICA TO APPEAR IN A PUBLIC SERVICE ANNOUNCEMENT, 1995
- FEATURED IN PGA MAGAZINE, JANUARY 1996, ON THE NATIONAL PSA 3RD VICE-PRESIDENT, NATIONAL GOLF COACHES ASSOCIATION

No. 1 rankings, top 10 finishes in the NCAA Championship, Auburn and Kim Evans all go hand in hand. Evans, who has led the Tigers to seven SEC Championships, including two of the last three, has compiled a 2,210-728-36 record as Auburn's head coach while leading the team to 91 top-three finishes in 192 tournaments.

Because of the continued success of the Program under Evans, in the fall of 2005, Golfweek named the Auburn women's program the fourth most successful program in the previous five years.

Evans, who is in her 18th year at Auburn, has led the Tigers to 13 NCAA Championship appearances, including six top-10 finishes with a tie for second in the nation in 2002 and third in 2005. Auburn's seven SEC titles under Evans came in 1996, 2000, 2003, 2005, 2006, 2009 and 2011. With the seven titles under Evans, Auburn has eight total - a mark that ties the Tigers for second all-time in the conference in SEC titles.

In all, Evans has coached seven SEC Golfers of the Year, 11 All-Americans to 26 honors and 16 All-SEC recipients for a total of 49 honors. She has also coached six SEC Freshmen of the Year and one NGCA National Freshman of the Year.

Included among those is 2009 SEC Golf of the Year Candace Schepperle, who became a four-time All-SEC performer in 2010, along with four-time All-SEC performer and Curtis Cup champion Cydney Clanton.

In 2008, Evans was inducted into the National Golf Coaches Hall of Fame. She was also awarded the Horton Smith Award for education by the Dixie Section of the PGA at its 2009 Annual Meeting.

Auburn won its second SEC title in the last three seasons in 2011, holding a wire-to-wire lead on its home course to edge out in-state rival Alabama. The Tigers tallied three top-five finishes on the season as they also finished fifth at the Pac-10/SEC Challenge and the Battle at Rancho Bernardo Inn. The season ended with a 13th-place finish at the NCAA East Regional.

During the 2009-10 season, Evans led the Tigers to top-five finishes in nine of their 12 tournaments and top 10 finishes

in all but two. Auburn pulled out victories at the Auburn Invitational and Tiger/Wave Classic while also taking runner-up honors at the Lady Tar Heel Invitational and NCAA Fall Preview.

Auburn compiled a 153-43-5 record on the season and returned to the NCAA Championship, finishing in a tie for 11th. Clanton stepped up at NAAs, tying for third to give her the second-best finish ever at the NCAA Tournament for an Auburn player.

In 2008-09, Evans led the Tigers to top-five finishes in seven of the team's 11 tournaments. Included in those is the 2009 SEC Championship title and three regular-season tournament victories.

Auburn put together an impressive 132-39-1 record with the golfers accounting for 19 individual top-10 finishes. For her work, Evans was named the SEC Coach of the Year for the fourth time in her career.

In 2007-08, Auburn was ranked in the top-15 in the nation throughout the entire season, ending with a 12th-place finish at the NCAA Championships. Freshman Cydney Clanton was named an All-American and the NGCA Freshman of the Year. The honor came after she was named SEC Freshman of the Year, earning all-conference honors along with Candace Schepperle and Margaret Shirley. AU finished fourth overall at the SEC Championships.

The Tigers finished the 2002 season ranked No. 1 nationally in Golfweek, the team's first-ever No. 1 ranking, and were No. 1 in the nation in Golfweek's 2002-03 preseason poll. In all, Evans has coached the Tigers to 20 tournament titles during her more than 14 seasons on the Plains.

The 1981 Auburn graduate has turned a once mediocre program into a consistent National Championship contender.

The 2007 season saw Auburn finish ninth at the NCAA Championships after winning three tournament titles during the regular season. Nicole Hage was named a third-team All-American and led a pack of three Tigers that earned All-SEC honors, joining Schepperle and Shirley.

In 2006, Evans coached the Tigers to a sixth place finish at the NCAA East Region and a 12th place finish at the NCAA Championships. Two players were named All-Americans, and Maria Martinez was



named SEC Women's Golfer of the Year. The team tied a school record with five tournament victories, taking first place in the Derby Invitational, The LSU/Cleveland Golf Classic, The Lady Gamecock Classic, The SEC Championship and the Lady Buckeye Invite.

In 2005 Evans led the Tigers to the NCAA Central Region title and senior Diana Ramage earned medalist honors in the tournament. Three players were named All-Americans, as well as All-SEC team members in 2005.

In 2004, freshman Hage won SEC Freshman of the Year honors and was named as the Co-SEC Player of the Year. Along with Hage, Maria Martinez earned first team All-SEC honors.

Auburn won three tournaments in 2003 with the SEC Championship, the ACC/SEC Challenge and the Mercedes-Benz Collegiate. Senior Celeste Troche became the first four-time All-American in Tiger history while Danielle Downey was an honorable mention All-American. Troche, Downey and Diana Ramage were all All-SEC first-team selections and Maria Martinez was a second-teamer.

Evans led the Tigers to a school-best tie for second in the 2002 NCAA Championship. The Tigers finished the season ranked No. 1 nationally in Golfweek. Courtney Swaim, Troche and Downey each earned All-American honors as Swaim and Troche were first-team selections with



## HEAD COACH KIM EVANS

Downey on the second team.

Evans was named SEC Coach of the Year for the third time in seven seasons while Kingsley Barrett became the third-straight Tiger to claim SEC Freshman of the Year honors. Downey, Swaim and Troche were first-team All-SEC selections while Troche was also selected to the SEC Academic Honor Roll.

The Tigers had a then school-best fourth-place finish in the 2001 NCAA Championship. Celeste Troche earned first-team All-America honors and was an Academic All-American and SEC Player of the Year, and Ramage won the Tigers' second consecutive SEC Freshman of the Year award. The Tigers won a school record five tournaments.

The Tigers finished sixth in the 2000 NCAA Championship and won the 2000 SEC Championship for the second time in five years. Freshmen Danielle Downey, who won three individual tournaments including the SEC Championship, and Celeste Troche, who was the SEC Freshman of the Year, were both named second-team All-Americans. Both were first-team All-SEC selections and a quartet of Tigers, Kami Smith, Crystal Ferrier, Kimberly Strong and Audrey Fisher, were named to the SEC Academic Honor Roll.

The Tigers finished 15th in the 1999 NCAA Championship while Robin Cook was named a second-team All-American for the second straight year. Kami Smith earned Academic All-America honors. Six Tigers were named All-SEC with Cook earning SEC Player of the Year honors.

In 1998, the Tigers finished 19th at the NCAA Championship. Cook was named second-team All-American and three Tigers garnered All-SEC honors along with three being named to the SEC Academic Honor Roll.

The Tigers finished 13th in the nation in 1997 as the team advanced to the NCAA Championship at the Scarlet Course in Columbus, Ohio. Katie Gallina was named an All-American and the Tigers had four All-SEC selections and two SEC Academic Honor Roll picks. Evans led the Tigers to a 143-36 (.799) record during the 1996-97 season. In 1996, Evans became only the second women's golf coach in Auburn history to be named SEC Coach of the

Year and District South Coach of the Year, along with the legendary Bud Marsee.

Auburn's 1996 SEC Championship was the school's second ever, the first coming in 1989. Evans also led the Tigers to their first trip to the NCAA Championship in six years in 1996 as the Tigers finished 18th in the country. Marci Clemons was an All-American and won the prestigious Dinah Shore Award and Edith Munson Award. Three Tigers were selected All-SEC and one to the SEC Academic Honor Roll.

Evans was formerly an assistant coach for the men's golf team at Georgia Tech from 1988-1994 and the assistant executive director of the Atlanta Junior Golf Association for six years.

In 1981, she graduated from Auburn with a Bachelor of Science degree while also lettering for the Tigers from 1978-81.

Upon her graduation from Auburn, Evans worked as a golf activity coordinator and golf professional at Sandestin Resort in Destin, Fla., where she obtained her PGA Class A status.

Extremely involved in the community, Evans has worked with a variety of charities during her time at Auburn. She works every year with the Gary Moore Christmas Meal, an event that provides a holiday dinner for those in need in the Auburn-Opelika area. She also coordinated the inaugural Will Golf For Food Tournament that assists the Lee-Russell County Aging Foundation.

Evans has a long list of golf achievements including being on the Board of Directors for "The Alabama First Tee Chapter" in 1999 and was the third Vice-President of the National Golf Coaches Association for 1999-2000.

She was awarded the Georgia PGA Junior Golf Leader Award in 1992; was a member of the PGA National Junior Golf Steering Committee from 1992-93; Georgia State Golf Association Advisory Committee, 1992-1994; Georgia Junior Golf Foundation Board of Directors, 1992-1994; Special Olympics Committee for Golf in 1994; and Instructor for the LPGA Mazda Executive Women's Clinic in 1993.

She was the guest speaker for the 1990 USGA Women's Regional Workshop and at the AAHPERD Regional Convention in

1993.

She spearheaded and directed the "See Jane Build Golf Day" in September 1995 to benefit Habitat for Humanity in Lee County and was selected to the South District Selection Committee for 1995-96. While at Georgia Tech, she was involved in several campus activities such as directing the Georgia Tech Annual Gift Giving, The United Way for four years, the Tournament Coordinator of the Local Contributors Golf Tournament for the NCAA Women's Final Four in 1993 and the Mandy Miller Golf Classic (Women's Basketball Scholarship Endowment Program) for three years.

Evans was a co-Director for the "Go For the Gold Twilight Run" (fund raising for women's athletics) in 1991. Evans spends time with many charities and is a member of the Professional Golf Association of America. Among Evans' achievements from the recent past include the creation of the Auburn Tiger Invitational (now named the Auburn Tiger-Derby Invitational after former Auburn golfer and Curtis Cup Champion Virginia-Derby Grimes). She was also instrumental in landing the 1996 NCAA East Regional and 2003 NCAA Championship at Grand National in Opelika, Ala..

"The individuals are the best part of coaching," said Evans of her players. "Of course everybody likes to win. But, when you're dealing with individuals, and they accomplish their goals, we all come together and accomplish our team goals.

"When you have quality student-athletes and mix them with the game of golf, I can't see a better combination."



### KIM EVANS YEAR-BY-YEAR RESULTS

<i>Year</i>	<i>Record</i>	<i>Pct.</i>	<i>SEC Finish</i>	<i>NCAA Finish</i>
1994-95	66-56-1	.541	T6th	---
1995-96	119-52-3	.693	1st	18th
1996-97	143-36-0	.799	3rd	13th
1997-98	98-66-5	.595	5th	18th
1998-99	121-72-0	.627	6th	15th
1999-00	135-47-1	.740	1st	6th
2000-01	160-15-1	.912	4th	4th
2001-02	162-7-3	.951	2nd	T2nd
2002-03	130-39-3	.760	1st	9th
2003-04	104-40-4	.716	2nd	---
2004-05	163-19-1	.893	1st	3rd
2005-06	163-29-0	.849	1st	12th
2006-07	157-42-0	.789	8th	9th
2007-08	139-56-7	.688	4th	T12th
2008-09	132-39-1	.828	1st	---
2009-10	155-43-5	.882	5th	T11th
2010-11	95-78-2	.549	1st	---
Career Totals (17 years) 2210-728-36 (.749)				

### KIM EVANS VS. ALL OPPONENTS

Alabama.....	91-26-2	Georgia.....	63-74-4	Nebraska.....	9-0	Southern Mississippi.....	5-0
Alabama State.....	1-0	Georgia State.....	13-0	Nevada.....	3-0	Southern.....	1-0
Alabama-Birmingham.....	7-0	Grand Valley State.....	1-0	UNLV.....	10-1	St. Francis (Pa.).....	2-0
Appalachian State.....	9-0	Hawaii.....	1-0	New Mexico.....	18-4	Stanford.....	21-10-1
Arizona.....	17-21-6	Idaho.....	2-0	New Mexico State.....	11-5	Stetson.....	7-0
Arizona State.....	19-25	Illinois.....	3-1	New Orleans.....	2-0	Swedish National Team.....	2-2
Arkansas.....	52-13	Indiana.....	12-4-1	Nihon University (Japan).....	1-0	Tennessee.....	64-38-1
Arkansas-Little Rock.....	7-0	Iowa.....	4-1	North Carolina.....	64-24-1	Tennessee-Chattanooga.....	4-1
Arkansas State.....	4-0	Iowa State.....	3-1	North Carolina State.....	35-0	Texas.....	38-15-3
Augusta State.....	7-0	Jackson State.....	6-0	North Carolina-Greensboro.....	23-1	Texas A&M.....	22-5-2
Baylor.....	5-0	Jacksonville.....	1-0	North Carolina-Wilmington.....	31-0	Texas A&M-Corpus Christi.....	2-0
Birmingham Southern.....	6-0	Jacksonville State.....	2-0	North Texas.....	3-0	Texas Christian.....	28-5
Brigham Young.....	5-0	James Madison.....	6-0	Northern Arizona.....	0-0-1	Texas-El Paso.....	1-0
California.....	9-6	Kansas.....	7-0	Northwestern.....	11-3	Texas Tech.....	8-2
California-Davis.....	2-0	Kansas State.....	1-0	Notre Dame.....	6-0	Tohoku-Fukushi U.(Japan).....	1-0
California-Irvine.....	2-0	Kennesaw State.....	1-0	Ohio State.....	36-12	Troy State.....	6-0
UCLA.....	6-24-1	Kent State.....	22-4	Oklahoma.....	13-3	Tulane.....	38-7
Cal State Long Beach.....	1-0	Kentucky.....	64-5-1	Oklahoma State.....	36-16	Tulsa.....	20-11
Cal State Northridge.....	1-0	Kinki University (Japan).....	1-0	Oregon.....	9-4	UCLA.....	0-4
Campbell.....	9-0	Lamar.....	1-1	Oregon State.....	6-2	Vanderbilt.....	72-24
Central Florida.....	49-2	Longwood.....	3-1	Osaka Gakuin.....	1-0	Virginia.....	34-10-1
College of Charleston.....	28-0	Louisville.....	21-2	Penn State.....	12-2	Wake Forest.....	68-32-1
Charleston Southern.....	3-0	LSU.....	66-44-2	Pepperdine.....	22-8	Washington.....	12-3
Cincinnati.....	2-0	Lynn.....	2-0	Purdue.....	39-19-1	Washington State.....	4-0
Coastal Carolina.....	23-1	Maryland.....	4-0	Richmond.....	1-0	Weber State.....	1-0
Colorado.....	2-0	Memphis.....	29-3-1	Rollins.....	6-0	West Florida.....	1-0
Denver.....	11-2	Methodist.....	3-2	Sacramento State.....	1-0	Western Carolina.....	4-0
Duke.....	16-85-3	Miami (Fla.).....	31-2	Samford.....	5-0	Western Kentucky.....	3-0
East Carolina.....	13-1	Michigan.....	10-0	San Diego State.....	4-0	Wichita State.....	2-0
East Tennessee State.....	5-0	Michigan State.....	32-8	San Jose State.....	9-4	William & Mary.....	2-0
Farleigh-Dickinson.....	2-0	Minnesota.....	6-0	Santa Clara.....	1-0	Winthrop.....	8-0
Florida.....	66-43	Mississippi.....	67-5	South Alabama.....	4-0	Wisconsin.....	4-0
Florida Atlantic.....	1-0	Mississippi State.....	67-3	South Carolina.....	96-23-4	Wofford.....	4-0
Florida International.....	7-0	Missouri.....	7-0	South Florida.....	27-2	Yale.....	3-0
Florida State.....	69-14	Mobile.....	1-0	Southern California.....	20-24-2		
Furman.....	65-21-2	Montevallo.....	1-0	Southern Illinois.....	7-0		
Georgetown.....	1-0	Murray State.....	1-0	Southern Methodist.....	14-1		



A photograph of two women on a golf course. On the left, Margaret Shirley, an assistant coach, is wearing a blue cap and an orange polo shirt. On the right, a player is wearing a white cap and an orange polo shirt. They are standing next to a golf bag on a tripod stand. The bag is orange and blue with 'AUBURN' written on it. A white towel is draped over the bag. A stuffed tiger is visible on top of the bag. The background is a blurred green field.

# MARGARET SHIRLEY

ASSISTANT COACH  
1ST SEASON

THE SHIRLEY FILE

HOMETOWN  
ROSWELL, GA.

EDUCATION  
AUBURN, 2008  
BACHELOR OF COMMUNICATIONS  
MINOR IN SPORT COACHING

COACHING EXPERIENCE  
GEORGIA ASSISTANT COACH (2009-11)  
ATHENS, GA.

PLAYING EXPERIENCE  
AUBURN UNIVERSITY (2004 - 2008)  
THREE-TIME SECOND-TEAM ALL-SEC  
THREE-TIME SEC COMMUNITY  
SERVICE TEAM MEMBER

Former Tiger and All-SEC stand-out Margaret Shirley returned to her alma mater on July 14, 2011 as an assistant coach. A three-time All-Southeastern Conference selection from 2005-08 at Auburn, she spent the previous two seasons as an assistant coach at Georgia.

While at Georgia she helped coach the Bulldogs to two NCAA Regional appearances and a fourth-place finish at the SEC championship in 2010. She also coached Marta Silva Zamora, who was named the NGCA and GolfWeek National Player of the Year in 2011. Silva Zamora also went on to win the Honda Award, the top award for women's golf.

Prior to beginning her coaching career, the Roswell, Ga., native spent the 2008-09 season playing professionally on the Florida Suncoast Series. She posted two wins and finished as the tour's leading money winner for the season.

Since that time, Shirley has regained her amateur status and continued her playing career. She has twice won the Georgia Women's Open and recently won the Georgia Women's Match Play Championship.

Shirley played at Auburn from 2004-08 and finished her career as one of just seven Tigers to compete in four straight NCAA Championships. Along with her three All-SEC selections, she was also a three-time honoree on the SEC Community Service Team.

Auburn notched back-to-back SEC Championships during her freshman and sophomore seasons. The Tigers also tallied 11 tournament titles and 24 top-three finishes. Individually, she placed third at SECs in 2006 and fourth in 2008.

On her career, she recorded eight top-10 tournament finishes and 14 top-20 finishes, including runner-up honors at the 2005 Lady Puerto Rico Classic.

Shirley received her bachelor's degree in Communications with a minor in Sport Coaching from Auburn in 2008.



MADISON OVERBY  
SENIOR  
HIGH POINT, N.C.

OVERBY'S CAREER RESULTS

2010-11 RESULTS (JUNIOR)  
DID NOT PLAY

2009-10 RESULTS (SOPHOMORE)

AUBURN INVITATIONAL .....	82-82, T-21ST
TIGER/WAVE GOLF CLASSIC .....	82-79-80-241, T-90TH
BRYAN NATIONAL COLLEGIATE .....	88-83-87-249, T-93RD

2008-09 RESULTS (FRESHMAN)

DERBY INVITATIONAL .....	79-84-79-242, T-79TH
LIZ MURPHEY COLLEGIATE CLASSIC .....	86-86, T-91ST
SUNTRUST LADY GATOR INVITATIONAL .....	78-78-82-238, T-41ST



**SEC Academic Honor Roll**  
**Auburn Top Tiger**

**Junior Year (2010-11)**

Did not play... Named an Academic Top Tiger and to the SEC Academic Honor Roll.

**Sophomore Year (2009-10)**

Best finish of the year came in a tie for 21st at the Auburn Invitational... Competed in the Tiger/Wave Golf Classic, tying for 90th with a tournament-total 241... Finished 93rd at the Bryan National Collegiate with an 88-83-78--249 scorecard... Named an Academic Top Tiger and to the SEC Academic Honor Roll.

**Freshman Year (2008-09)**

Played in three tournaments, compiling an 80.86 stroke average... Competed individually at the Derby Invitational during fall play... Tied for 79th shooting 79-84-79--242... Tied for 91st at the Liz Murphey Collegiate Classic, carding a 14-over 86 in the lone round of the tournament... Posted a season-best tie for 41st at the SunTrust Lady Gator Invitational (78-78-82--238)... During the Summer of 2009, competed in the North Carolina State Amateur and the North and South Women's Amateur.

**Junior/High School**

Played on the boys' team at her school from 7th-12th grade... Won the 2008 Balentyne Resort Open... Finished second at the 2008 North Carolina Women's

Amateur... Also finished runner-up at the 2007 Twin State Junior Girls Championship... Placed in the top 10 at the 2007 North-South Junior Girls Championship... Qualified for the state tournament every year... Was a Wendy's Heisman nominee.

**Personal**

Full name is Madison Kay Overbey... Parents are Chip and Myra Overbey... Has one sister, Cecily... Born March 16, 1990... Majoring in business administration and marketing... Home course is Colonial Country Club



**OVERBEY'S AVERAGES**

YEAR	TOURNS.	RDS.	STROKES	AVG.	LOW RD.
2008-09	3	7	566	80.86	78
2009-10	3	7	572	81.71	78
TOTALS	6	14	1,138	81.29	78





PATRICIA SANZ  
SENIOR  
MADRID, SPAIN

SANZ'S CAREER RESULTS

2010-11 RESULTS (JUNIOR)

NCAA FALL PREVIEW .....	77-75-71--223, T-42ND
MASON RUDOLPH CHAMPIONSHIP .....	75-72-76--223, T-54TH
TAR HEEL INVITATIONAL .....	76-70-78--224, T-56TH
PAC 10/SEC CHALLENGE .....	71-74-76--221, T-21ST
PUERTO RICO INVITATIONAL .....	79-78-79--236, T-59TH
ALLSTATE SUGAR BOWL CLASSIC .....	75-73-71--219, T-18TH
BATTLE AT RANCHO BERNADO .....	77-76-72--225, T-20TH
LIZ MURPHEY COLLEGIATE CLASSIC .....	77-76-72--225, T-25TH
SEC CHAMPIONSHIP .....	80-67-75--222, T-14TH
NCAA EAST REGIONAL CHAMPIONSHIP .....	77-76-77--230, T-69TH

2009-10 RESULTS (SOPHOMORE)

HOOTERS MATCH PLAY QUALIFYING .....	76-76--152, T-37TH
HOOTERS COLLEGIATE MATCH PLAY .....	INDIVIDUAL RECORD: 2-1-0
MASON RUDOLPH CHAMPIONSHIP .....	73-77-150, T-71ST
TAR HEEL INVITATIONAL .....	76-74-74--224, T-42ND
NCAA FALL PREVIEW .....	80-80-71--231, T-54TH
ARIZONA WILDCAT INVITATIONAL .....	75-73--148, T-14TH
AUBURN INVITATIONAL .....	72--72, T-2ND
TIGER/WAVE GOLF CLASSIC .....	78-82-76--236, T-64TH
LIZ MURPHEY COLLEGIATE CLASSIC .....	83-77-75--235, T-47TH
BRYAN NATIONAL COLLEGIATE .....	80-77-76--235, T-67TH
SEC CHAMPIONSHIP .....	78-75-72--225, 41ST
NCAA EAST REGIONAL .....	75-74-74--223, T-47TH
NCAA CHAMPIONSHIP .....	75-77-75-77--304, T-86TH

2008 RESULTS (FRESHMAN)

NCAA FALL PREVIEW .....	81-74-82--237, 56TH
MASON RUDOLPH CHAMPIONSHIP .....	78-79-72--229, T-56TH
TAR HEEL INVITATIONAL .....	78-70-81--229, T-38TH
DERBY INVITATIONAL .....	82-74-76--232, T-36TH
HOOTERS MATCH PLAY QUALIFYING .....	75-77--152, T-50TH
HOOTERS COLLEGIATE MATCH PLAY .....	INDIVIDUAL RECORD: 1-2-0
CENTRAL DISTRICT INVITATIONAL .....	72-70-82--224, T-11TH
CENTRAL FLORIDA CHALLENGE .....	75-78-75--227, T-61ST
LIZ MURPHEY COLLEGIATE CLASSIC .....	74--74, T-5TH
SUNTRUST LADY GATOR INVITATIONAL .....	79-75-77--231, T-19TH
SEC CHAMPIONSHIP .....	77-69-71--217, T-6TH
NCAA EAST REGIONAL .....	76-73-75--224, T-45TH



*2011 NGCA All-American Scholar  
2011 SEC Community Service Team  
2010 NGCA All-American Scholar  
2009 NGCA All-American Scholar  
SEC Academic Honor Roll  
Auburn Top Tiger*

**Junior Year (2010-11)**

Named to the SEC Community Service Team... Named NGCA All-American Scholar... Finished ranked 85th in the country according to the GolfWeek ratings... Had a 74.93 stroke average that ranked second on the team and 21st in the SEC... Placed in a tie for 14th at the SEC Championship with rounds of 80-67-75--222... Her second-round 67 tied for the eighth-lowest round ever in the SEC Championship... The 67 was also a personal-best for Sanz and ranks in a tie for seventh all-time at Auburn... Her best regular-season finish this season was a tie for 18th at the AllState Sugar Bowl Intercollegiate after carding rounds of 75-73-71--219... Had three top-20 finishes on the season after also tying for 20th at the Battle at Rancho Bernardo with a 77-76-72--225... Opened the season by tying for 42nd at the NCAA Fall Preview with rounds of 77-75-71--223... Tied for 54th at the Mason Rudolph Championship with a 75-72-76--223... At the Tar Heel Invitational, she tied for 56th after carding rounds of 76-70-78--224... Closed out the fall season by tying for 21st at the Pac 10/ SEC Challenge with a 71-74-76--221... Opened the spring by tying for 59th at the Lady Puerto Rico Classic with a 79-78-79--236... Tied for 25th at the regular-season finale, posting rounds of 77-76-72--225 at the Liz Murphey Collegiate... Tied for 69th at the NCAA East Regional (77-76-77--230).

**Sophomore Year (2009-10)**

Named a NGCA All-American Scholar... Finished the season ranked the No. 134 women's collegiate golfer in the nation... Competed in all 12 tournaments with 27 of her 32 rounds counting toward the team total... Top Fall finish came at the Hooter's Collegiate Match Play Qualifying, carding 76-76--152 to tie for 37th... Posted a 6-over-par 73-77--150 at the Mason Rudolph Championship (T71st)... Tied for 42nd in the Tar Heel Invitational after

a 76-74-74--224 weekend... Carded an 80-80-71--231 in the NCAA Fall Preview, tying for 54th... Finished in a tie for 14th at the Arizona Wildcat Invitational after shooting 75-73--148... Best finish of the season came in a tie for second at the Auburn Invitational as she carded a single round of 72... Scored a 73-77-75--235 at the Liz Murphey Collegiate Classic, placing in a tie for 47th... Carded an 80-77-76--233 tournament total at the Bryan National Collegiate... Finished 41st at the SEC Championship with rounds of 78-75-72--225... Tied for 47th at the NCAA East Regional Championship with a 75-74-74--223 total... Finished in a tie for 86th at the NCAA Championship... Held a season stroke average of 76.03... Named an Academic Top Tiger and to the SEC Academic Honor Roll.

**Freshman Year (2008-09)**

Named a NGCA All-American Scholar... Ranked fourth on the team with a 75.90 stroke average... Ranked 113th in the nation in the final GolfWeek ratings... Competed in all eleven tournaments... Her top finish came at the Liz Murphey Collegiate Classic where she tied for fifth with a 2-over-par 74)... At the NCAA East Regional, tied for 46th with a 14-over 224 (76-73-75--224)... Tied for sixth at the SEC Championships, carding a season-low 69 in the second round (77-69-71--217)... Tied for 36th at The Derby Invitational (82-7-476--232)... Turned in a 56th place finish at the NCAA Fall Preview (81-74-82--237)... Tied for 56th at the Mason Rudolph Championships shooting 78-79-72-229 for a season low... Finished 38th at the Tar Heel Invitational, carding a season low 70 in the second round (78-70-81--229)... Tied for 50th at the Hooter's Match Play Qualifying (78-75-153)... Started off the Spring season by finishing in a tie for 11th (72-70-82--224) at the Central District Invitational - her first career top-20 finish... Finished in a tie for 61st at the Central Florida Challenge, carding an 11-over 227... Picked up her third top-20 finish of the season at the SunTrust Lady Gator Invitational, coming in a tie for 19th after rounds of 79-75-77--231... Her low round of the season was a 2-under-par 69 at the SEC Championship... Teamed up with sister Marta



to win a couples tournament in Spain... Made the cut at the British Amateur at 9-over-par, lost in the first round of match play... Won the Madrid Tournament with a tournament-total 7-under-par... Played in the Biarritz Cup in France, finishing third with a 14-over-par total... Placed fourth in the Swisse International in Switzerland with a 2-over-par.

**Junior/High School**

Ranked first in the Madrid Girls' rankings in 2007-08 and fourth in the Spanish Girls' rankings... Played on the Spanish team that defeated Sweden and France... Her team was a four-time champion at the Madrid Open Team Championships.

**Personal**

Full name is Patricia Sanz... Parents are Carmelo Sanz and Marina Barrio... Has one sister, Marta, who is a sophomore on the Auburn women's golf team this season... Patricia and Marta are the second set of sisters to ever play at Auburn, joining Candace and Abigale Schepperle... Born September 9, 1990... Majoring in microbiology.

**SANZ'S AVERAGES**

YEAR	TOURNS.	RDS.	STROKES	AVG.	LOW RD.
2008-09	11	30	2,277	75.90	69
2009-10	12	32	2,433	76.03	71
2010-11	10	30	2,248	74.93	67
TOTALS	33	92	6,958	75.62	67





HALEY WILSON  
SENIOR  
FORT MITCHELL, ALA.

WILSON'S CAREER RESULTS

2010-11 RESULTS (JUNIOR)

NCAA FALL PREVIEW .....	76-73-78--227, T-59TH
MASON RUDOLPH WOMEN'S CHAMPIONSHIP .....	72-70-74--216, T-26TH
TAR HEEL INVITATIONAL.....	72-73-77--222, T-47TH
PAC 10/SEC CHALLENGE.....	77-75-86--238, T-93RD
PUERTO RICO INVITATIONAL.....	76-74-73--223, T-11TH
ALLSTATE SUGAR BOWL CLASSIC.....	80-71-74--225, T-42ND
BATTLE AT RANCHO BERNARDO.....	76-79-74--229, T-34TH
LIZ MURPHEY COLLEGIATE CLASSIC .....	73-78-73--224, T-15TH
SEC CHAMPIONSHIP .....	71-77-72--220, 11TH
NCAA EAST REGIONAL CHAMPIONSHIP.....	75-74-78--227, T-52ND

2009-10 RESULTS (SOPHOMORE)

HOOTERS MATCH PLAY QUALIFYING.....	70-76--146T-13TH
HOOTERS COLLEGIATE MATCH PLAY .....	INDIVIDUAL RECORD: 2-1-0
MASON RUDOLPH CHAMPIONSHIP.....	72-72--144, T-30TH
TAR HEEL INVITATIONAL.....	76-74-81--231, T-68TH
NCAA FALL PREVIEW.....	82-80-73--235, T-68TH
ARIZONA WILDCAT INVITAIONAL .....	79-78--157, T-53RD
AUBURN INVITATIONAL.....	74--74, T-7TH
TIGER/WAVE GOLF CLASSIC.....	78-72-77--227, T-24TH
LIZ MURPHEY COLLEGIATE CLASSIC.....	76-77-81--234, T-37TH
BRYAN NATIONAL COLLEGIATE .....	76-74-73--223, T-26TH
SEC CHAMPIONSHIP.....	71-71-70--212, T-7TH
NCAA EAST REGIONAL.....	70-77-77--224, T-54TH
NCAA CHAMPIONSHIP.....	73-77-74-78--302, T-76TH

2009 RESULTS (FRESHMAN)

CENTRAL DISTRICT INVITATIONAL .....	70-79-77--226, 19TH
CENTRAL FLORIDA CHALLENGE.....	73-72-74--219, T-28TH
LIZ MURPHEY COLLEGIATE CLASSIC.....	79--79, T-50TH
SUNTRUST LADY GATOR INVITATIONAL.....	77-77-76--230, T-13TH
SEC CHAMPIONSHIP.....	70-78-71--219, 12TH
NCAA EAST REGIONAL.....	79-73-68--220, T-23RD



**2009 All-SEC Second Team**  
**2009 All-SEC Freshman Team**

**Junior Year (2010-11)**

Finished ranked as the No. 89 player in the country according to GolfWeek... Ranked 24th in the SEC by stroke average (75.03)... Led Auburn at the Lady Puerto Rico Invitational and the Liz Murphey Collegiate Classic... Had three top-20 finishes on the season... Finished 11th at the SEC Championship with rounds of 71-77-72--220... Best regular-season finish was a tie for 11th at the Lady Puerto Rico with rounds of 76-74-73--223... Opened the season by finishing in a tie for 59th at the NCAA Fall Preview with a 76-73-78--227... Followed up with a tie for 26th at the Mason Rudolph Championship, carding rounds of 72-70-74--216... Tied for 47th at the Tar Heel Invitational with a 72-73-77--222... Wrapped up the fall season by tying for 93rd at the Pac 10/SEC Challenge with a 77-75-86--238... Tied for 42nd at the AllState Sugar Bowl Intercollegiate with an 80-71-74--225... Finished in a tie for 34th at the Battle at Rancho Bernardo with a 76-79-74--229... Closed out the regular season by leading Auburn with a 73-78-73--224 at the Liz Murphey Collegiate, tying for 15th... Tied for 52nd at the NCAA East Regional (75-74-78--227).

**Sophomore Year (2009-10)**

Finished the season ranked as the No. 91 women's collegiate golfer in the nation... Competed in all 12 of the team's tournaments, with 27 of her 32 rounds counting toward the team total... Best performance of the fall was a tie for 13th at the Hooter's Collegiate Match Play Qualifying, shooting 70-76--146... Tied for 30th at the Mason Rudolph Championship with a tournament total 72-72--144, her two-round total of the fall... Shot a 76-74-81--231 at the Tar Heel Invitational... Carded an 82-80-73--235 at the NCAA Fall Preview... Competed at the Arizona Wildcat Invitational, shooting a

tournament-total 79-78--157... Best finish of the season came in a tie for seventh at the Auburn Invitational, carding a round of 74... Tied for 24th at the Tiger/Wave Golf Classic after shooting a 78-72-77--227... Shot a 76-77-81--234 at the Liz Murphey Collegiate Classic... Carded a tournament-total 76-74-73--223 at the Bryan National Collegiate, finishing in a tie for 26th... Tied her best finish of the season with a tie for seventh with a 71-71-70--212 at the SEC Championship... Tied for 54th at the NCAA East Regional Championship at 8-over par... Tied for 76th at the NCAA Championship with a 73-77-74-78--302 scorecard... Ranked third on the team in stroke average with a 75.28 mark.

**Freshman Year (2009)**

Graduated early from high school and joined the Auburn women's golf team in January, 2009... Named to the All-SEC Second Team and the All-SEC Freshman Team... Competed in all five tournaments since joining the team... Ranked third on the team with a 74.56 stroke average... Ranked in the top 100 (64th) in the nation in the final GolfWeek ratings... In five appearances, had three top-20 finishes and two top-15 showings... Was second on the team, tied for 23rd overall, at the NCAA East Regional after carding a 79-73-68--220... Her final-round 68 marked her first collegiate round in the 60s... Finished 12th at the SEC Championship carding a season low of 70 in the first round (70-78-71--219)... Was the first-round leader at the SEC Championship... Finished 19th overall in her collegiate debut, carding a 70-79-77--226 at the Central District Invitational... Finished in a tie for 28th at the Central Florida Challenge (73-72-74--219) and was tied for 50th at the Liz Murphey Collegiate Classic (79)... Picked up her first top-15 finish at the SunTrust Lady Gator Invitational as she posted rounds of 77-77-76--230... Her best 18-hole round is her 2-under-par 70 in the first round of the Central District Invitational... During the Summer of 2009, competed in the



U.S. Women's Amateur qualifier and the North-South Championship... Won the consolation bracket of the Alabama Amateur Championship.

**Junior/High School**

Is the 2008 Alabama State Junior Girls Champion... Qualified for the U.S. Girls' Junior in both 2007 and 2008... Qualified for the U.S. Women's Amateur in 2008... Is a two-time Alabama 6A High School state champion and played as part of the state championship-winning Central High School team in 2008... Was twice named All-Bi-City (Phenix City, Ala., and Columbus, Ga.)

**Personal**

Full name is Haley Ann Wilson... Parents are David and Sheree Wilson... Has a sister, Karly Raye, and a brother, Luke Wilson... Born June 26, 1991... Majoring in communication... Home course is Maple Ridge Golf Course.

**WILSON'S AVERAGES**

YEAR	TOURNS.	RDS.	STROKES	AVG.	LOW RD.
2008-09	6	16	1,193	74.56	68
2009-10	12	32	2,409	75.28	70
2010-11	10	30	2,251	75.03	71
TOTALS	28	78	5,853	74.96	68



CARLIE YADLOCZKY  
JUNIOR  
CASSELBERRY, FLA.

YADLOCZKY'S CAREER RESULTS

2010-11 RESULTS (SOPHOMORE)

TAR HEEL INVITATIONAL.....	75-74-77--226, T-61ST
PAC 10/SEC CHALLENGE.....	73-71-81--225, T-38TH
ALLSTATE SUGAR BOWL CLASSIC.....	76-76-78--230, T-64TH
BATTLE AT RANCHO BERNARDO .....	81-76-76--233, T-51ST
LIZ MURPHY COLLEGIATE CLASSIC.....	77-77-73--227, T-35TH
SEC CHAMPIONSHIP.....	70-74-81--225, T-19TH
NCAA EAST REGIONAL CHAMPIONSHIP.....	78-76-77--231, T-78TH

2009-10 RESULTS (FRESHMAN)

HOOTERS COLLEGIATE MATCH PLAY QUALIFYING .....	75-76--151, T-29TH
HOOTERS COLLEGIATE MATCH PLAY .....	INDIVIDUAL RECORD: 1-2-0
MASON RUDOLP CHAMPIONSHIP.....	74-72--146, T-49TH
TAR HEEL INVITATIONAL.....	76-70-72--218, T-11TH
NCAA FALL PREVIEW.....	74-77-74--225, T-30TH
ARIZONA WILDCAT INVITATIONAL.....	75-76--151, T-27TH
AUBURN INVITATIONAL .....	80--80, T-18TH
TIGER/WAVE GOLF CLASSIC.....	81-77-74--232, T-53RD
LIZ MURPHEY COLLEGIATE CLASSIC.....	81-72-82--235, T-47TH
BRYAN NATIONAL COLLEGIATE .....	74-70-73--217, 8TH
SEC CHAMPIONSHIP.....	74-80-76--230, 50TH
NCAA EAST REGIONAL.....	68-73-70--211, 2ND
NCAA CHAMPIONSHIP .....	77-79-81-80--317, 120TH



**2010 NGCA All-East Region Team**  
**2010 SEC All-Freshman Team**  
**2011 "Mo" Morial Tournament Champ.**

**Sophomore Year (2010-11)**

Was fifth on the team with a 76.05 stroke average and ranked 39th in the SEC... Finished in a tie for 19th at the SEC Championship with rounds of 70-74-81-225... Missed the first two tournaments of the fall and opened her season at the Tar Heel Invitational, tying for 61st with rounds of 75-74-77--226... Closed out the fall by tying for 38th at the Pac 10/SEC Challenge with rounds of 73-71-81--225... Missed the first spring tournament, opening the season in a tie for 64th at the All-State Sugar Bowl Intercollegiate, carding rounds of 76-76-78--230... Tied for 51st at the Battle at Rancho Bernardo with an 81-76-76--233... Wrapped up the regular season by tying for 35th, her best finish of the season, at the Liz Murphey Collegiate, tallying rounds of 77-77-73--227... Tied for 78th at the NCAA East Regional (78-76-77--231).

**Freshman Year (2009-10)**

Named to the NGCA All-East Region Team and the SEC All-Freshman Team... Best result of the year was a second-place finish at the NCAA East Regional Championship after a 68-73-70--211 performance... Ended the season ranked as the No. 113 women's collegiate golfer in the nation, according to GolfWeek... Tied for 29th in her first collegiate event after a 7-over-par (75-76--151) performance at the Hooters Collegiate Match Play Qualifying... Posted a 74-72--146 at the Mason Rudolph Championship... Her best fall finish came at the Tar Heel Invitational, tying for 11th (76-70-72--

225)... Tied for 30th at the NCAA Fall Preview with a 74-77-74--225 tournament total... Earned a tie for 27th at the Arizona Wildcat Invitational, competing as an individual to score a 75-76--151... Carded a round of 80 in the Auburn Invitational to tie for 17th... Finished the Tiger/Wave Golf Classic with a scorecard of 81-77-74--232... Carded the team's best round with a 72 in the second round of the Liz Murphey Collegiate Classic, finishing in a tie for 47th at 81-72-82--235... Finished eighth at the Bryan National Collegiate, where she led the team with a 74-70-73--217 tournament total... Finished in a tie for 50th at the SEC Championship with a 74-80-76--230... Finished the season with a 77-79-81-80--317 tournament total at the NCAA Championship... Owned a 75.41 stroke average... Posted four top-20 finishes this season and two top-10 results... Competed for Auburn in 11 of the team's 12 tournaments.

**Junior/High School**

Won three team state championships at Lake Howell High School... Competed in the Suncoast Tour as an amateur, carding a runner-up finish (71-72-70--213) and two other top-10 finishes during the Summer of 2009... Earned runner-up honors at the 2006 Nike Golf Junior at Ft. Myers (74-75-78--227)... Took fourth place at the 2007 AJGA First American Title Junior Classic (78-76-76--230)... Placed third at the 2008 AJGA Heritage Junior Championship (72-73-73--218)... Also picked up seventh-place finishes in 2008 at the First American Title Junior Open (73-73-80--226) and AJGA Knoxville Junior Open (73-75-79--227)... In all, notched five career top-10 finishes in AJGA events and 11 top-20 finishes... On the Florida Junior



Tour, she had 13 top-10 finishes and two victories at the 2007 Disney and MetroWest Championships.

**Personal**

Full name is Carlie Anne Yadloczky... Parents are Jerrie and Steve Yadloczky... Has an older sister, Jessica, who is currently playing on the LPGA Futures Tour... Born June 15, 1991... Majoring in liberal arts... Her course is Twin Rivers.

**YADLOCZKY'S AVERAGES**

YEAR	TOURNS.	RDS.	STROKES	AVG.	LOW RD.
2009-10	12	32	2,413	75.41	68
2010-11	7	21	1,597	76.05	70
TOTALS	19	85	4,010	75.73	68





DIANA FERNANDEZ  
SOPHOMORE  
ASUNCION, PARAGUAY

FERNANDEZ'S CAREER RESULTS

2010-11 RESULTS (FRESHMAN)

NCAA FALL PREVIEW.....	77-79-76--232, 79TH
MASON RUDOLPH CHAMPIONSHIP.....	75-77-77--229, T-74TH
PUERTO RICO INVITATIONAL.....	79-80-78--237, T-67TH
LIZ MURPHEY COLLEGIATE CLASSIC.....	81-79-74--234, T-78TH



*2011 SEC First-Year Academic Honor Roll  
2010 World Amateur Team Championship (Paraguay) Participant  
Auburn Academic Top Tiger*

**Freshman Year (2010-11)**

Finished ranked 55th in the SEC with a 77.67 stroke average... Played in four tournaments as a freshman, competing as an individual in one... Best regular-season finish was a tie for 67th at the Lady Puerto Rico Invitational after carding a 79-80-78--237... Made her collegiate debut at the NCAA Fall Preview, placing 79th with rounds of 77-79-76--232... Recorded rounds of 75-77-77--229 to tie for 74th at the Mason Rudolph Championship... Wrapped up the regular season with a tie for 78th at the Liz Murphey Collegiate Classic, tallying an 81-79-74--234.

**Junior/High School**

Selected to represent Paraguay at the 2010 World Amateur Team Championship in Buenos Aires, Argentina... At ages 15, 16 and 17, was the top ranked junior golfer in Paraguay... Winner of the 2009 National Match Play Championship in Paraguay... Finished in a tie for sixth at the 2009 AJGA Girls Championship... Tied for fifth at the 2008 Doral-Publix Junior Golf Classic... Placed 10th at the 2008 Junior Orange Bowl Championship... Ranked second in the 2008 Junior South American Rankings.

**Personal**

Full name is Diana Beatriz Fernandez Tonina... Parents are Julio Fernandez and Liliana Tonina... Has a brother, David... A native of Asuncion, Paraguay, her home course is the Yacht y Golf Club Paraguayo... Born April 14, 1992... Plans to major in Engineering.



**FERNANDEZ'S AVERAGES**

YEAR	TOURNS.	RDS.	STROKES	AVG.	LOW RD.
2010-11	4	12	932	77.67	74
TOTALS	4	12	932	77.67	74





MARTA SANZ  
SOPHOMORE  
MADRID, SPAIN

SANZ'S CAREER RESULTS

2010-11 RESULTS (FRESHMAN)

MASON RUDOLPH CHAMPIONSHIP .....	74-76-72--222, T-54TH
TAR HEEL INVITATIONAL.....	75-76-74--225, T-58TH
PAC 10/SEC CHALLENGE.....	74-75-76--225, T-38TH
PUERTO RICO INVITATIONAL.....	74-81-71--226, T-20TH
ALLSTATE SUGAR BOWL CLASSIC.....	80-77-75--232, T-71ST
BATTLE AT RANCHO BERNADO.....	74-78-78--230, T-38TH
LIZ MURPHEY COLLEGIATE CLASSIC .....	78-77-74--229, T-47TH
SEC CHAMPIONSHIP .....	73-78-71--222, T-14TH
NCAA EAST REGIONAL CHAMPIONSHIP .....	73-78-76--227, T52ND

*2011 Lady Tar Heel Invitational Champion*  
*2011 SEC All-Freshman Team*  
*2011 SEC First-Year Academic Honor Roll*  
*Auburn Top Tiger*

#### **Freshman Year (2010-11)**

Named to the SEC All-Freshman Team... Finished ranked 117th in the country according to the GolfWeek ratings... Was fourth on the team with a 75.48 stroke average and ranked 31st in the SEC... Played in nine of 10 tournaments, competing as an individual in three... In her SEC Championship debut, tied for 14th with rounds of 73-78-71--222... Best regular-season finish was a tie for 20th at the Lady Puerto Rico Invitational after carding a 74-81-71--226... Made her collegiate debut at the Mason Rudolph Championship, tying for 54th with rounds of 74-76-72--222 as an individual... Made her first team appearance at the Tar Heel Invitational, tying for 58th with rounds of 75-76-74--225... Closed out the fall by tying for 38th at the Pac 10/SEC Challenge with a 74-75-76--225... Tied for 71st at the AllState Sugar Bowl Intercollegiate with rounds of 80-77-75--232... Her best finish of the spring was a tie for 38th at the Battle at Rancho Bernardo, carding a 74-78-78--230... Wrapped up the regular season with a tie for 47th at the Liz Murphey Collegiate, tallying a 78-77-74--229... Tied for 52nd at the NCAA East Regional (73-78-76--227).

#### **Junior/High School**

Member of the Spanish National Junior Team... Seven-time winner of the Madrid Regional Ranking... Finished within the

top five at both the 2009 Spanish National Championship U-18 and the 2009 Madrid Regional Championship U-21... Was the 2009 Spanish National Champion at the Spanish Amateur Women's Doubles, playing alongside her sister, Patricia... Won the 2010 Madrid Championship, defeating older sister Patricia on the final hole.

#### **Personal**

Full name is Marta Sanz Barrio... Parents are Carmelo Sanz and Marina Barrio... Her older sister, Patricia, is a junior on the Auburn women's golf team... A native of Madrid, Spain, her home course is R.A.C.E... Born on August 27, 1992.



#### **SAN'S AVERAGES**

<u>YEAR</u>	<u>TOURNS.</u>	<u>RDS.</u>	<u>STROKES</u>	<u>AVG.</u>	<u>LOW RD.</u>
2010-11	9	27	2,038	75.48	71
TOTALS	9	27	2,038	75.48	71



## FRESHMEN

### LAKIN EDDY HOOVER, ALA.

**High School:** Attended Spain Park High School outside of Birmingham... A multi-sport athlete, she has the distinction of having led Spain Park to four state championships - the 2009 6A golf title and the 2009, 2010 and 2011 6A soccer titles... Was also named to the 2009 Alabama Golf All-Tournament team and has twice been honored as an all-metro soccer selection... An honor student, she was also heavily involved in the community, earning the Spain Park High School community service award after working with the Ronald McDonald House, Children's Harbor Children's Hospital and the American Heart Association.

**Personal:** Full name is Lakin Myshell Eddy... Parents are Ronnie and Janna Eddy... Has a younger sister, Haven (16)... Home course is RTJ Oxmoor Valley... Plans on majoring in business management with a minor in psychology... Born Nov. 26, 1992.



### NICOLE QUINN WINDERMERE, FLA.

**High School:** Attended The First Academy in Orlando... She was a three-time regional champion and two-time district champion was the No. 1 player on the school's golf team for the past seven years... She has also notched three top-10 finishes at the state championship... In junior tournaments, she had five top-10 finishes and two victories on the Florida Junior Tour and was the 2010 Florida Women's State Golf Association Player of the Year... Won the Optimist International Tournament of Champions and qualified for the Junior PGA Championship and the U.S. Girls Junior Championship, finishing 21st and 25, respectively... Advanced to the championship flight of three amateur events earlier this year, finishing in the top cut of the Dixie Amateur, Harder Hall Invitational and the Sally South Atlantic Amateur.

**Personal:** Full name is Catherine Nicole Quinn... Parents are Tom and Terri Quinn... Has an older brother, Michael (20)... Home course is the Faldo Institute of Golf in Orlando... Plans on majoring in business... Born Dec. 17, 1992.



### VICTORIA TRAPANI HOLLYWOOD, FLA.

**High School:** Attended St. Thomas Aquinas High School, where she won the district title each of the past four years and took top honors at regionals the past three... Was the Florida High School Player of the Year in 2010 and won all-county honors all four years... Qualified for the U.S. Women's Amateur Public Links the last three years, advancing to the match play portion in 2010... Also competed in the 2010 U.S. Women's Amateur and the 2009 U.S. Girls Junior Championship.

**Personal:** Full name is Victoria Ann Trapani... Parents are Robert and Kim Trapani... Has an older sister Elizabeth (20)... Home course is Emerald Cove Country Club... Plans on majoring in Finance... Born Jan. 8, 1993



## INDIVIDUAL ROUNDS - STROKE AVERAGE

<i>Name</i>	<i>Round 1</i>	<i>Round 2</i>	<i>Round 3</i>	<i>Round 4</i>	<i>Overall</i>
Cydney Clanton	9-649 (72.11)	9-661 (73.44)	9-647 (71.89)		27-1957 (72.48)
Patricia Sanz	10-764 (76.40)	10-737 (73.70)	10-747 (74.70)		30-2248 (74.93)
Haley Wilson	10-748 (74.80)	10-744 (74.40)	10-759 (75.90)		30-2251 (75.03)
Marta Sanz	9-675 (75.00)	9-697 (77.44)	9-666 (74.00)		27-2038 (75.48)
Carlie Yadloczky	7-530 (75.71)	7-524 (74.86)	7-543 (77.57)		21-1597 (76.05)
Karlin Beck	6-465 (77.50)	6-466 (77.67)	6-449 (74.83)		18-1380 (76.67)
Diana Fernandez	4-312 (78.00)	4-315 (78.75)	4-305 (76.25)		12-932 (77.67)
<b>TEAM</b>	<b>10-2979 (297.90)</b>	<b>10-2983 (298.30)</b>	<b>10-2962 (296.20)</b>		<b>30-8914 (297.13)</b>

## BEST FINISHES

<i>Player</i>	<i>Finish</i>	<i>Tournament</i>
Cydney Clanton	3rd	Mason Rudolph, Pac 10/SEC Challenge, SEC Championship
Haley Wilson	11th	SEC Championship
Patricia Sanz	T-14th	SEC Championship
Marta Sanz	T-14th	SEC Championship
Carlie Yadloczky	T-19th	SEC Championship
Karlin Beck	T-22nd	Allstate Sugar Bowl Intercollegiate
Diana Fernandez	T-67th	Lady Puerto Rico Invitational

## LOW SCORES › TOP FINISHES

<i>Name</i>	<i>Low 18</i>	<i>Low 36</i>	<i>Low 54</i>	<i>Top 5</i>	<i>Top 10</i>	<i>Top 20</i>
Karlin Beck	71	148	220			
Cydney Clanton	67	137	208	4	4	6
Diana Fernandez	74	152	229			
Patricia Sanz	67	145	219			3
Marta Sanz	71	149	222			2
Haley Wilson	71	142	216			3
Carlie Yadloczky	70	144	225			1

## ROUNDS COUNTED / ROUNDS PLAYED

<i>Player</i>	<i>Counted Rounds</i>	<i>Total Rounds</i>	<i>Percentage</i>
Cydney Clanton	26	27	.963
Haley Wilson	26	30	.867
Carlie Yadloczky	18	21	.857
Patricia Sanz	22	27	.815
Diana Fernandez	7	9	.778
Karlin Beck	13	18	.722
Marta Sanz	15	21	.714

## SUB-PAR ROUNDS

Cydney Clanton	11
Patricia Sanz	4
Haley Wilson	3
Marta Sanz	2
Karlin Beck	1
Carlie Yadloczky	1

## ROUNDS IN 60S

Cydney Clanton	6
Patricia Sanz	1



## 2010-11 TOURNAMENT RESULTS

### NCAA FALL PREVIEW

COLLEGE STATION, Texas -- Final results from the NCAA Fall Preview hosted by Texas A&M at the Traditions Club at Texas A&M.

Par: 72. Yardage: 6,271.

1	Alabama	286-280-283-849 (-15)
2	LSU	287-283-280--850 (-14)
3	Southern Cal	289-282-285--856 (-8)
4	Duke	293-287-280--860 (-4)
5	Georgia	277-297-290--864 (E)
6	Vanderbilt	284-290-292--866 (+2)
7	UCLA	293-287-289--869 (+5)
8	Virginia	301-290-286--877 (+13)
9	Tulane	294-296-288--878 (+14)
10	Purdue	300-293-290--883 (+19)
11	Michigan State	299-300-295--894 (+30)
12	Auburn	296-297-302--895 (+31)
T13	Texas	299-298-301--898 (+34)
T13	Wake Forest	295-299-304--898 (+34)
15	Pepperdine	307-303-289--899 (+35)
16	Texas A&M	297-306-299--902 (+38)
17	Stanford	307-298-305--910 (+46)
18	Tennessee	306-298-308--912 (+48)

#### Auburn Individuals

24	Cydney Clanton	68-73-77--218 (+2)
T42	Patricia Sanz	77-75-71--223 (+7)
T59	Haley Wilson	76-73-78--227 (+11)
T76	Karlin Beck	75-76-80--231 (+15)
79	Diana Fernandez	77-79-76--232 (+16)

#### Individual Champion

Megan McChrystal (LSU) 68-73-65--206 (-10)

### MASON RUDOLPH CHAMPIONSHIP

NASHVILLE, Tennessee -- Final results from the Mason Rudolph Championship hosted by Vanderbilt at the Vanderbilt Legends Club North Course.

Par: 72. Yardage: 6,281.

1	LSU	278-282-283--843 (-21)
2	Purdue	279-282-284--845 (-19)
T3	Southern Cal	286-287-278--851 (-13)
T3	UCLA	284-288-279--851 (-13)
5	California	279-284-291--854 (-10)
6	Alabama	285-286-288--859 (-5)
T7	Georgia	284-286-292--862 (-2)
T7	Vanderbilt	289-285-288--862 (-2)
9	Wake Forest	286-284-297--867 (+3)

T10	Florida	286-295-291--872 (+8)
T10	Duke	283-297-292--872 (+8)
12	Auburn	294-288-294--876 (+12)
13	Texas	294-293-291--878 (+14)
14	North Carolina	289-303-293--885 (+21)
15	Stanford	298-294-297--889 (+25)
16	Oklahoma State	293-300-301--894 (+30)
17	C. of Charleston	307-303-310--920 (+56)

#### Auburn Individuals

3	Cydney Clanton	72-69-67--208 (-8)
T26	Haley Wilson	72-70-74--216 (E)
T51	Marta Sanz	74-76-72--222 (+6)**
T54	Patricia Sanz	75-72-76--223 (+7)
T74	Diana Fernandez	75-77-77--229 (+13)
T80	Karlin Beck	78-77-78--233 (+17)

\*\* - Playing as an individual

#### Individual Champion

Pia Halbig (California) 68-67-68--203 (-13)

### TAR HEEL INVITATIONAL

CHAPEL HILL, N.C. -- Results from the Tar Heel Invitational hosted by North Carolina at the Finley Golf Course.

Par: 72. Yardage: 6,285.

1	Alabama	277-274-285--836 (-28)
2	LSU	285-285-278--848 (-16)
3	Duke	288-278-285--851 (-13)
4 -	Virginia	290-289-283--862 (-2)
5	North Carolina	294-284-288--866 (+2)
6	Michigan State	289-292-289--870 (+6)
7	Tulane	289-296-287--872 (+8)
T8	Vanderbilt	298-287-289--874 (+10)
T8	Georgia	295-288-291--874 (+10)
10	Wake Forest	291-288-297--876 (+12)
T11	South Carolina	291-297-290--878 (+14)
T11	Louisville	301-291-286--878 (+14)
T13	Auburn	293-288-299--880 (+16)
T13	Texas A&M	292-291-297--880 (+16)
15	Florida	288-301-292--881 (+17)
16	Florida State	299-292-299--890 (+26)
17	Denver	299-295-304--898 (+34)
18	NC State	302-303-303--908 (+44)

#### Auburn Individuals

T16	Cydney Clanton	71-71-71--213 (-3)
T47	Haley Wilson	72-73-77--222 (+6)
T56	Patricia Sanz	76-70-78--224 (+8)

T58	Marta Sanz	75-76-74--225 (+9)
T61	Carlie Yadloczky	75-74-77--226 (+10)

#### Individual Champion

Megan McChrystal (LSU) 67-72-66--205 (-11)

### PAC 10/SEC CHALLENGE

PALO ALTO, Calif. -- Final results from the Pac 10/SEC Challenge hosted by Stanford at the Stanford Golf Course.

Par: 71. Yardage: 6,103.

1	UCLA	285-281-290--856 (+4)
2	Alabama	289-286-292--867 (+15)
3	Southern Cal	294-291-290--875 (+23)
4	Arizona	286-292-299--877 (+25)
<b>5</b>	<b>Auburn</b>	<b>286-289-304--879 (+27)</b>
T6	Stanford	293-289-300--882 (+30)
T6	Georgia	293-293-296--882 (+30)
8	Tennessee	291-293-302--886 (+34)
T9	Washington	287-295-308--890 (+38)
T9	California	290-291-309--890 (+38)
11	Arkansas	288-296-307--891 (+39)
12	Vanderbilt	291-302-304--897 (+45)
13	LSU	316-293-298--907 (+55)
14	Oregon	307-306-298--911 (+59)
T15	South Carolina	299-303-310--912 (+60)
T15	Ole Miss	300-299-313--912 (+60)
17	Kentucky	295-308-320--923 (+71)
18	Florida	309-298-317--924 (+72)
19	Oregon State	320-304-305--929 (+77)
20	Washington State	315-310-316--941 (+89)
21	Mississippi State	319-306-322--947 (+95)

#### Auburn Individuals

3	Cydney Clanton	68-69-72--209 (-4)
T21	Patricia Sanz	71-74-76--221 (+8)
T38	Carlie Yadloczky	73-71-81--225 (+12)
T38	Marta Sanz	74-76-75--225 (+12)
93	Haley Wilson	77-75-86--238 (+25)

#### Individual Champion

Sophia Popov (USC) 72-68-67--207 (-6)



**LADY PUERTO RICO CLASSIC**

*RIO GRANDE, Puerto Rico - Final results from the Lady Puerto Rico Classic hosted by Purdue at the River Course at Rio Mar Beach Resort. Par: 72. Yardage: 6,191.*

1	Alabama	286-298-291--875 (+11)
2	Iowa State	300-293-287--880 (+16)
3	Florida State	303-295-293--891 (+27)
4	Purdue	300-302-294--896 (+32)
5	Georgia	308-302-297--907 (+43)
T6	Kent State	306-306-304--916 (+52)
T6	Northwestern	307-305-304--916 (+52)
8	Texas Christian	303-311-305--919 (+55)
9	Oklahoma	308-306-306--920 (+56)
10	Oregon	313-307-302--922 (+58)
11	Auburn	313-310-300--923 (+59)
12	SMU	305-313-310--928 (+64)
13	Michigan	315-307-309--931 (+67)
14	Indiana	319-308-305--932 (+68)
15	Texas Tech	310-311-316--937 (+73)
16	Penn State	317-321-300--938 (+74)
T17	Oklahoma State	311-317-311--939 (+75)
T17	North Carolina State	311-315-313--939 (+75)

**Auburn Individuals**

T11	Haley Wilson	76-74-73--223 (+7)
T20	Marta Sanz*	74-81-71--226 (+10)
T29	Karlin Beck	79-78-72--229 (+13)
T59	Patricia Sanz	79-78-79--236 (+20)
T67	Diana Fernandez	79-80-78--237 (+21)
T75	Cydney Clanton	79-83-77--239 (+23)

\* - Competed as an individual

**Individual Champion**

Stephanie Meadow (Alabama) 73-70-69--212 (-4)

**ALLSTATE SUGAR BOWL**

**INTERCOLLEGIATE CHAMPIONSHIP**

*NEW ORLEANS - Final results from the All-state Sugar Bowl Intercollegiate Championship hosted by Tulane University at English Turn Golf & Country Club.*

*Par: 72. Yardage: 6,105.*

1	Southern Cal	297-289-282--868 (+4)
2	Alabama	295-287-290--872 (+8)
T3	Tulane	288-298-293--879 (+15)
T3	Duke	290-299-290--879 (+15)
T5	Purdue	302-291-287--880 (+16)

T5	Virginia	298-292-290--880 (+16)
7	Arizona State	293-299-290--882 (+18)
8	Texas A&M	302-286-297--885 (+21)
9	LSU	291-302-294--887 (+23)
<b>10</b>	<b>Auburn</b>	<b>302-298-288--888 (+24)</b>
11	Vanderbilt	294-297-300--891 (+27)
12	Florida	298-301-294--893 (+29)
13	Tennessee	300-295-301--896 (+32)
14	North Carolina	307-294-302--903 (+39)
15	Ole Miss	303-305-300--908 (+44)
16	Kentucky	305-301-307--913 (+49)
17	Denver	306-313-308--927 (+63)

**Auburn Individuals**

T11	Cydney Clanton	74-75-67--216 (E)
T18	Patricia Sanz*	75-73-71--219 (+3)
T22	Karlin Beck	72-76-72--220 (+4)
T42	Haley Wilson	80-71-74--225 (+9)
T64	Carlie Yadloczky	76-76-78--230 (+14)
T71	Marta Sanz	80-77-75--232 (+16)

\* - Competed as an individual

**Individual Champion**

Stephanie Meadow (Alabama) 72-66-73--211 (-5)

**BATTLE AT RANCHO BERNARDO INN**

*SAN DIEGO - Final results from the Battle at Rancho Bernardo Inn hosted by San Diego State University at the Championship Golf Course at Rancho Bernardo Inn Golf Resort & Spa.*

*Par: 72. Yardage: 6,336*

1	Purdue	295-292-292--879 (+15)
2	Southern Cal	299-295-292--886 (+22)
3	UCLA	293-304-290--887 (+23)
4	Georgia	310-304-289--903 (+39)
<b>5</b>	<b>Auburn</b>	<b>305-307-293--905 (+41)</b>
6	California-Davis	294-307-308--909 (+45)
7	Arizona	303-302-307--912 (+48)
T8	Pepperdine	311-308-295--914 (+50)
T8	Texas	303-306-305--914 (+50)
10	UNLV	304-303-308--915 (+51)
11	Arizona State	297-316-304--917 (+53)
12	Denver	314-305-304--923 (+59)
13	California	306-314-304--924 (+60)
14	Oregon	309-318-307--934 (+70)
15	Texas Christian	322-309-306--937 (+73)
16	New Mexico	312-317-311--940 (+76)
17	San Diego State	309-321-311--941 (+77)

**Auburn Individuals**

T4	Cydney Clanton	71-76-71--218 (+2)
T20	Patricia Sanz	77-76-72--225 (+9)
T34	Haley Wilson	76-79-74--229 (+13)
T38	Marta Sanz*	74-78-78--230 (+14)
T51	Carlie Yadloczky	81-76-76--233 (+17)
T71	Karlin Beck	83-82-76--241 (+25)

\* - Competed as an individual

**Individual Champion**

Laura Gonzalez (Purdue) 70-71-68--209 (-7)

**LIZ MURPHEY COLLEGIATE CLASSIC**

*ATHENS, Ga. - Final results from the Liz Murphey Collegiate Classic hosted by the University of Georgia at the University of Georgia Golf Course.*

*Par: 72. Yardage: 6,335*

*(Alternate scoring method used. Low four scores for each hole calculated instead of low four rounds each day.)*

1	Alabama	286-291-382--860 (-4)
T2	Duke	291-296-281--868 (+4)
T2	Purdue	284-297-287--868 (+4)
4	Arkansas	294-298-277--869 (+5)
5	Florida	300-293-277--870 (+6)
T6	Auburn	294-297-280--871 (+7)
T6	Georgia	291-294-286--871 (+7)
8	Notre Dame	302-286-284--872 (+8)
9	Wake Forest	294-297-285--876 (+12)
10	Michigan State	296-296-286--878 (+14)
11	Ohio State	300-289-290--879 (+15)
12	LSU	303-296-281--880 (+16)
T13	Florida State	293-302-288--883 (+19)
T13	Virginia	294-296-293--883 (+19)
15	North Carolina	297-299-288--884 (+20)
16	Oklahoma	295-304-288--887 (+23)
17	Kent State	306-297-288--891 (+27)
18	South Carolina	296-313-285--894 (+30)
19	Kentucky	307-303-290--900 (+36)
20	Furman	304-307-294--905 (+41)
21	Kennesaw State	295-313-298--906 (+42)
22	Georgia State	311-302-302--915 (+51)
23	Tenn.-Chatt.	310-304-302--916 (+52)

**Auburn Individuals**

T15	Haley Wilson	73-78-73--224 (+8)
T25	Patricia Sanz	77-76-72--225 (+9)
T32	Karlin Beck	78-77-71--226 (+10)



## 2010-11 TOURNAMENT RESULTS

T35	Carlie Yadloczky	77-77-73--227 (+11)
T47	Marta Sanz	78-77-74--229 (+13)
T78	Diana Fernandez*	81-79-74--234 (+18)

\* - Competed as an individual

### **Individual Champion**

Marta Silva (Georgia)	74-71-67--212 (-4)
-----------------------	--------------------

## SEC CHAMPIONSHIP

*AUBURN, Ala. - Final round results from the SEC Championship hosted by Auburn University at the Auburn University Club.*

*Par: 72. Yardage: 6,364.*

1	Auburn	283-290-291--864 (E)
2	Alabama	291-291-293--875 (+11)
3	LSU	287-300-300--887 (+23)
4	Arkansas	289-305-298--892 (+28)
5	South Carolina	302-304-287--893 (+29)
6	Tennessee	285-308-302--895 (+31)
7	Vanderbilt	295-307-295--897 (+33)
8	Georgia	292-309-298--899 (+35)
9	Florida	301-310-296--907 (+43)
10	Kentucky	315-304-308--927 (+63)
11	Ole Miss	316-314-301--931 (+67)
12	Mississippi St.	315-324-316--955 (+91)

### **Auburn Individuals**

3	Cydney Clanton	69-72-73--214 (-2)
11	Haley Wilson	71-77-72--220 (+4)
T14	Marta Sanz	73-78-71--222 (+6)
T14	Patricia Sanz	80-67-75--222 (+6)
T19	Carlie Yadloczky	70-74-81--225 (+9)

### **Individual Champion**

Erica Popson (Tennessee)	66-74-70--210 (-6)
--------------------------	--------------------

## NCAA EAST REGIONAL CHAMPIONSHIP

*DAYTONA BEACH, Fla. - Final results from the NCAA East Regional Championship hosted by Stetson University at the LPGA International Legends Course.*

*Par: 72. Yardage: 6,271.*

1	Alabama	287-284-295--866 (+2)
2	North Carolina	293-282-293--868 (+4)
3	Arizona State	295-288-288--871 (+7)
4	Coastal Carolina	286-298-292--876 (+12)
5	California	290-295-293--878 (+14)

6	Purdue	295-285-299--879 (+15)
7	Florida	298-297-285--880 (+16)
*T8	Vanderbilt	302-295-293--890 (+26)
T8	Florida State	297-295-298--890 (+26)
10	Texas Christian	302-297-294--893 (+29)
11	Michigan State	297-299-298--894 (+30)
12	Louisville	301-302-296--899 (+35)
13	Auburn	302-299-302--903 (+39)
14	Mississippi	303-293-310--906 (+42)
15	NC-Wilmington	304-308-302--914 (+50)
16	Texas Tech	316-303-298--917 (+53)
17	Augusta State	302-302-314--918 (+54)
18	Colorado	306-307-306--919 (+55)
19	Stetson	304-309-310--923 (+61)
20	Kentucky	306-309-312--927 (+63)
21	FIU	311-301-317--929 (+65)
22	Yale	310-309-311--930 (+66)
23	FDU	312-324-323--959 (+95)
24	Alabama St.	334-334-337--1005 (+141)

\* - Vanderbilt defeated Florida State in the playoff for the eighth spot

### **Auburn Individuals**

T31	Cydney Clanton	77-73-72--222 (+6)
T52	Marta Sanz	73-78-76--227 (+11)
T52	Haley Wilson	75-74-78--227 (+11)
T69	Patricia Sanz	77-76-77--230 (+14)
T78	Carlie Yadloczky	78-76-77--231 (+15)

### **Individual Champion**

Stephanie Meadow (Ala.)	71-67-69--207 (-9)
-------------------------	--------------------



**KARLIN BECK**

1. NCAA Fall Preview .....	75-76-80--231 (T76th)
2. Mason Rudolph Championship.....	78-77-78--233 (T80th)
3. Lady Puerto Rico Invitational .....	79-78-72--229 (T29th)
4. Allstate Sugar Bowl Intercollegiate Classic.....	72-76-72--220 (T22nd)
5. Battle at Rancho Bernardo .....	83-82-76--241 (T71st)
6. Liz Murphey Collegiate Classic.....	78-77-71--226 (T32nd)

**CYDNEY CLANTON**

1. NCAA Fall Preview .....	68-73-77--218 (24th)
2. Mason Rudolph Championship.....	72-69-67--208 (3rd)
3. Tar Heel Invitational .....	71-71-71--213 (T16th)
4. Pac 10/SEC Challenge.....	68-69-72--209 (3rd)
5. Lady Puerto Rico Invitational .....	79-83-77--239 (T75th)
6. Allstate Sugar Bowl Intercollegiate Classic.....	74-75-67--216 (T11th)
7. Battle at Rancho Bernardo .....	71-76-71--218 (T4th)
8. SEC Championship.....	69-72-73--214 (3rd)
9. NCAA East Regional Championship.....	77-73-72-222 (T31st)

**DIANA FERNANDEZ**

1. NCAA Fall Preview .....	77-79-76--232 (79th)
2. Mason Rudolph Championship.....	75-77-77--229 (T74th)
3. Puerto Rico Invitational .....	79-80-78--237 (T67th)
4. Liz Murphey Collegiate Classic*.....	81-79-74--234 (T78th)

**MARTA SANZ**

1. Mason Rudolph Championship.....	74-76-72--223 (T54th)
2. Tar Heel Invitational .....	75-76-74--225 (T58th)
3. Pac 10/SEC Challenge.....	74-75-76--225 (T38th)
4. Puerto Rico Invitational .....	74-81-71--226 (T20th)
5. Allstate Sugar Bowl Intercollegiate Classic.....	80-77-75--232 (T71st)
6. Battle at Rancho Bernardo.....	74-78-78--230 (T38th)
7. Liz Murphey Collegiate Classic.....	78-77-74--229 (T47th)
8. SEC Championship.....	73-78-71--222 (T14th)
9. NCAA East Regional Championship.....	73-78-76--227 (T52nd)

**PATRICIA SANZ**

1. NCAA Fall Preview .....	77-75-71--223 (T42nd)
2. Mason Rudolph Championship.....	75-72-76--223 (T54th)
3. Tar Heel Invitational .....	76-70-78--224 (T56th)
4. Pac 10/SEC Challenge.....	71-74-76--221 (T21st)
5. Puerto Rico Invitational .....	79-78-79--236 (T59th)
6. Allstate Sugar Bowl Intercollegiate Classic*.....	75-73-71--219 (T18th)
7. Battle at Rancho Bernardo.....	77-76-72--225 (T20th)
8. Liz Murphey Collegiate Classic.....	77-76-72--225 (T25th)
9. SEC Championship.....	80-67-75--222 (T14th)
10. NCAA East Regional Championship.....	77-76-77--230 (T69th)

**HALEY WILSON**

1. NCAA Fall Preview .....	76-73-78--227 (T59th)
2. Mason Rudolph Women's Championship.....	72-70-74--216 (T26th)
3. Tar Heel Invitational .....	72-73-77--222 (T47th)
4. Pac 10/SEC Challenge.....	77-75-86--238 (T93rd)
5. Puerto Rico Invitational .....	76-74-73--223 (T11th)
6. Allstate Sugar Bowl Intercollegiate Classic.....	80-71-74--225 (T42nd)
7. Battle at Rancho Bernardo.....	76-79-74--229 (T34th)
8. Liz Murphey Collegiate Classic.....	73-78-73--224 (T15th)
9. SEC Championship.....	71-77-72--220 (11th)
10. NCAA East Regional Championship.....	75-74-78--227 (T52nd)

**CARLIE YADLOCZKY**

1. Tar Heel Invitational .....	75-74-77--226 (T61st)
2. Pac 10/SEC Challenge.....	73-71-81--225 (T38th)
3. Allstate Sugar Bowl Intercollegiate Classic.....	76-76-78--230 (T64th)
4. Battle at Rancho Bernardo.....	81-76-76--233 (T51st)
5. Liz Murphey Collegiate Classic.....	77-77-73--227 (T35th)
6. SEC Championship.....	70-74-81--225 (T19th)
7. NCAA East Regional Championship.....	78-76-77--231 (T78th)

\* Competed as an individual



*Cydney Clanton carded 72.48 season stroke average, leading Auburn to its second Southeastern Conference title in her four years. For her efforts, she was named a second-team All-American.*

## YEAR-BY-YEAR RESULTS

### 1972-1975 (RESULTS NOT AVAILABLE)



1976 TEAM

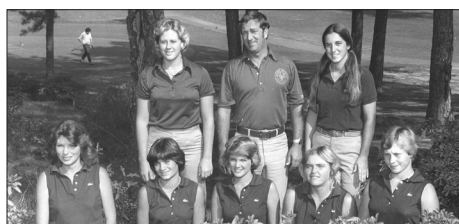
#### 1976

AIAW Golf Championship ..... 16th of 16

#### 1976-77

Lady Gator Invitational ..... 12th  
 Lady Paladin Invitational ..... 18th  
 Women's Southern Inter ..... 9th  
 Lady Kentucky Invitational ..... 6th  
 Lady Seminole Invitational ..... 15th  
 Lady Tar Heel Invitational ..... 7th  
 Beacon Woods Invitational ..... 6th

### 1978-79 (RESULTS NOT AVAILABLE)



1980 TEAM

#### 1980 (72-83-0)

Duke Fall Invitational ..... 3rd of 16  
 Lady Paladin Invitational ..... 12th of 24  
 Women's Southern Intercollegiate ..... 15th of 17  
 Lady Cats Invitational ..... 7th of 15  
 Lady Seminole Invitational ..... 14th of 17  
 Georgia Invitational ..... 14th of 28  
 Lady Tar Heel Invitational ..... 11th of 28  
 Lady Gator Invitational ..... 15th of 18



1981 TEAM

#### 1981

SEC Championship ..... 4th of 6

*Note: The program was dropped after the spring of 1981 and re-instated in the fall of 1985.*



1985-86 TEAM

#### 1985-86 (60-87-0)

Lady Seminole Invitational ..... 12th of 19  
 Memphis State Intercollegiate ..... 13th of 17  
 Duke Fall Invitational ..... 6th of 12  
 Alabama-Seascape Invitational ..... 13th of 15  
 LSU-Fairwood Invitational ..... 8th of 15  
 Hudson Industries-TSU Invitational ..... 9th of 21  
 Lady Paladin Invitational ..... 11th of 14  
 Peggy Kirk Bell Invitational ..... 3rd of 15  
 Canceled Classic ..... 4th of 7  
 Women's Southern Intercollegiate ..... 13th of 16



1986-87 TEAM

SEC Championship ..... 6th of 7

#### 1986-87 (57-58-0)

Memphis State Intercollegiate ..... 8th of 18  
 Lady Tar Heel Intercollegiate ..... 11th of 16  
 Tiger-Tide Invitational ..... 6th of 17  
 U.S. International Invitational ..... 8th of 15  
 Hudson Industries Invitational ..... 7th of 13  
 Illinois Spring Classic ..... 6th of 10  
 Lady Paladin Invitational ..... 7th of 10



1987-88 TEAM

Women's Southern Intercollegiate ..... 10th of 17  
 SEC Championship ..... 4th of 8

#### 1987-88 (98-37-1)

Lady Seminole Invitational ..... t-7th of 19  
 Lady Tar Heel Invitational ..... 7th of 18  
 Tiger-Tide Invitational ..... 4th of 16  
 U.S. International Invitational ..... 3rd of 11  
 Lady Gator Invitational ..... 7th of 12  
 Hudson Industries Invitational ..... 1st of 14

LSU-Fairwood Invitational ..... 5th of 15  
 Illinois Spring Classic ..... 2nd of 9



1988-89 TEAM

Lady Paladin Invitational ..... 5th of 8  
 Women's Southern Intercollegiate ..... 3rd of 16  
 SEC Championship ..... 4th of 9

#### 1988-89 (117-38-0)

Dick McGuire Invitational ..... 10th of 17  
 Lady Kat Invitational ..... 2nd of 19  
 Tiger-Tide Invitational ..... 3rd of 13  
 Lady Gator Invitational ..... 5th of 12  
 Hudson Industries Invitational ..... 2nd of 18  
 LSU-Fairwood Invitational ..... 3rd of 14  
 Duke Spring Invitational ..... 5th of 19



1989-90 TEAM

Lady Sun Devil Invitational ..... 4th of 17  
 Women's Southern Intercollegiate ..... 1st of 11  
 SEC Championship ..... 1st of 9  
 NCAA Championship ..... 13th of 17

#### 1989-90 (120-27-0)

Dick McGuire Invitational ..... 3rd of 18  
 Lady Kat Invitational ..... 1st of 17  
 Tiger-Tide Invitational ..... 2nd of 20  
 Yamaha Holiday Classic ..... 4th of 11  
 Lady Gator Invitational ..... 3rd of 12  
 Country Club of Alabama ..... 1st of 9



1990-91 TEAM

LSU-Fairwood Invitational ..... 3rd of 14  
 Lady Sun Devil Invitational ..... 8th of 18  
 Women's Southern Intercollegiate ..... 3rd of 13  
 SEC Championship ..... 2nd of 9  
 NCAA Championship ..... 8th of 17



**1990-91 (75-56-0)**

Lady Buckeye Invitational .....	14th of 19
PING/Tulsa Intercollegiate .....	7th of 19
Tiger-Tide Invitational .....	6th of 19
Golf World Collegiate .....	7th of 12
Lady Gator Invitational .....	11th of 12



1991-92 TEAM

Country Club of Alabama .....	2nd of 8
South Carolina Invitational .....	5th of 13
Lady Sun Devil Invitational .....	6th of 17
Women's Southern Intercollegiate .....	2nd of 13
SEC Championship .....	6th of 9

**1991-92 (45-63-0)**

Arizona State Fall Preview .....	17th of 18
Lady Paladin Invitational .....	7th of 9
Tiger-Tide Invitational .....	7th of 15



1992-93 TEAM

Lady Gator Invitational .....	6th of 12
Country Club of Alabama .....	3rd of 10
LSU-Fairwood Invitational .....	7th of 16
UNC-Woodbridge Tournament .....	9th of 10
Women's Southern Intercollegiate .....	8th of 17
SEC Championship .....	8th of 10

**1992-93 (46-86-3)**

Lady Paladin Invitational .....	6th of 9
Tiger-Tide Invitational .....	4th of 18
Carolyn Cudone Collegiate .....	11th of 15



1993-94 TEAM

Lady Gator Invitational .....	8th of 12
Josten's Invitational .....	12th of 17
LSU-Fairwood Invitational .....	16th of 17
Woodbridge Invitational .....	t-8th of 9
Women's Southern Intercollegiate .....	t-12th of 19

SEC Championship .....	7th of 11
NCAA East Regional .....	t-12th of 18

**1993-94 (93-48-1)**

Lady Paladin Invitational .....	7th of 14
Tiger-Tide Invitational .....	14th of 20



1994-95 TEAM

Carolyn Cudone Collegiate .....	3rd of 16
Lady Gator Invitational .....	6th of 12
LSU-Fairwood Invitational .....	t-6th of 18
Lexel Golf .....	4th of 21
Women's Southern Intercollegiate .....	5th of 20
SEC Championship .....	3rd of 11
NCAA East Regional .....	9th of 19

**1994-95 (66-56-1)**

Auburn Tiger Invitational .....	1st of 12
---------------------------------	-----------



1995-96 TEAM

Lady Tar Heel Invitational .....	8th of 15
Lady Paladin Invitational .....	6th of 23
Carolyn Cudone Collegiate .....	8th of 12
Lady Gator Invitational .....	10th of 12
LSU-Fairwood Invitational .....	6th of 15
Duke Spring Invitational .....	10th of 17
Liz Murphey Collegiate .....	11th of 15
SEC Championship .....	t-6th of 11

**1995-96 (119-53-3)**

Auburn Tiger Invitational .....	3rd of 12
Lady Tar Heel Invitational .....	t-5th of 18



1996-97 TEAM

Lady Paladin Invitational .....	3rd of 23
Carolyn Cudone Collegiate .....	13th of 15
Lady Gator Invitational .....	3rd of 13
LSU-Fairwood Invitational .....	3rd of 18

Duke Spring Invitational .....	6th of 15
Liz Murphey Collegiate .....	3rd of 22
SEC Championship .....	1st of 12
NCAA East Regional .....	t-5th of 19
NCAA Championship .....	18th of 18

**1996-97 (143-36-0)**

Lady Seminole Invitational .....	4th of 19
Auburn Tiger Invitational .....	2nd of 12
Lady Rebel Intercollegiate .....	1st of 15



1997-98 TEAM

Lady Paladin Invitational .....	4th of 21
Pepperdine Invitational .....	2nd of 9
SunTrust Lady Gator Invitational .....	4th of 15
Fripp Island/Hogan Intercollegiate .....	3rd of 17
Lady Gamecock Classic .....	5th of 15
Liz Murphey Collegiate .....	2nd of 19
SEC Championship .....	5th of 12
NCAA East Regional .....	3rd of 19
NCAA Championship .....	13th of 18

**1997-98 (98-66-5)**

Auburn Tiger Invitational .....	5th of 12
---------------------------------	-----------



1998-99 TEAM

Mercedes-Benz Collegiate .....	t-12th of 18
Lady Paladin Invitational .....	t-4th of 21
Memphis Women's Intercollegiate .....	3rd of 15
SunTrust Lady Gator Invitational .....	7th of 19
Fripp Island/Hogan Intercollegiate .....	3rd of 17
Bryan National Collegiate .....	10th of 15
Liz Murphey Collegiate .....	t-5th of 17
SEC Championship .....	5th of 12
NCAA East Regional .....	t-7th of 19
NCAA Championship .....	19th of 19

**1998-99 (121-72-0)**

Lady Seminole Invitational .....	3rd of 20
Auburn Tiger Invitational .....	6th of 12
Mercedes-Benz Collegiate .....	4th of 16
Lady Paladin Invitational .....	2nd of 18
OSU-SMU Regional Challenge .....	10th of 18
Lady Gator Invitational .....	5th of 19
LSU/Fairwood Invitational .....	4th of 18



## YEAR-BY-YEAR RESULTS

Thompson Rainbow Wahine .....	9th of 15
Liz Murphey Collegiate .....	8th of 18
SEC Championship .....	6th of 12
NCAA East Regional .....	8th of 19
NCAA Championship .....	t-15th of 19



1999-2000 TEAM

### 1999-2000 (135-47-1)

NCAA Fall Preview .....	18th of 21
Auburn Tiger-Derby Invitational .....	2nd of 13
Tar Heel Invitational .....	3rd of 15
Mercedes-Benz Collegiate .....	7th of 18
Lady Paladin Invitational .....	3rd of 24
Lady Gator Invitational .....	4th of 15
Casa de Campo Invitational .....	2nd of 11
Liz Murphey Collegiate .....	5th of 17
SEC Championship .....	1st of 12
NCAA East Regional .....	t-7th of 24
NCAA Championship .....	6th of 24



2000-01 TEAM

### 2000-01 (160-15-1)

Auburn Tiger-Derby Invitational .....	1st of 12
NCAA Fall Preview .....	6th of 21
ACC/SEC Shootout .....	1st of 12
Lady Paladin Invitational .....	1st of 22
GolfWorld Invitational .....	1st of 12
Lady Gator Invitational .....	1st of 17
Liz Murphey Collegiate .....	3rd of 18
LSU/Cleveland Classic .....	2nd of 11
SEC Championship .....	3rd of 12
NCAA East Regional .....	2nd of 21
NCAA Championship .....	4th of 24



2001-02 TEAM

### 2001-02 (162-7-3)

Topy Cup/U.S.-Japan Collegiate .....	1st of 5
NCAA Fall Preview .....	t-1st of 24

Mercedes-Benz Collegiate .....	2nd of 14
Lady Paladin Invitational .....	1st of 21
Auburn Tiger-Derby Invitational .....	2nd of 12
Arizona Wildcat Invitational .....	2nd of 18
AU One-Day Invitational .....	1st-of-2
Liz Murphey Collegiate .....	2nd of 18
LSU/Cleveland Classic .....	1st of 13
SEC Championship .....	2nd of 12
NCAA East Regional .....	2nd of 21
NCAA Championship .....	t-2nd of 24



2002-03 TEAM

### 2002-03 (130-39-3)

NCAA Fall Preview .....	5th of 18
SEC/ACC Challenge .....	1st of 12
Mercedes-Benz Collegiate .....	1st of 15
Derby Invitational .....	t-4th of 13
Lady Puerto Rico Classic .....	10th of 15
Lady Gamecock Classic .....	t-4th of 15
Bryan National Collegiate .....	t-6th of 18
Liz Murphey Collegiate .....	5th of 17
SEC Championship .....	1st of 12
NCAA East Regional .....	4th of 21
NCAA Championship .....	9th of 24



2003-04 TEAM

### 2003-04 (104-40-4)

NCAA Fall Preview .....	t-1st of 18
Mason Rudolph Championship .....	7th of 17
Franklin Street Partners Invitational .....	t-3rd of 9
SEC/ACC Challenge .....	3rd of 11
Lady Puerto Rico Classic .....	7th of 15
Lady Gator Invitational .....	7th of 15
Lady Gators at Howey in the Hills .....	3rd of 4
Liz Murphey Collegiate Classic .....	5th of 18
Bryan National Collegiate .....	5th of 18
SEC Championship .....	t-2nd of 12
NCAA East Regional .....	11th of 21



2004-05 TEAM

### 2004-05 (163-19-1)

NCAA Fall Preview .....	5th of 21
Franklin Street Partners Invitational .....	2nd of 9
Lady Paladin Invitational .....	3rd of 23
ACC/SEC Challenge .....	2nd of 16
Lady Puerto Rico Classic .....	1st of 14
Lady Gator Invite .....	2nd of 18
Liz Murphey Collegiate .....	t-3rd of 19
Bryan National Collegiate .....	7th of 17
SEC Championship .....	1st of 12
NCAA Central Regional .....	1st of 21
NCAA Championship .....	3rd of 24



2005-06 TEAM

### 2005-06 (163-29-0)

Cougar Classic .....	4th of 17
Mason Rudolph Championship .....	5th of 15
Lady Tar Heel Invitational .....	2nd of 18
Derby Invitational .....	1st of 17
Wildcat Invitational .....	5th of 18
LSU Cleveland Golf Classic .....	1st of 18
Lady Gamecock Classic .....	1st of 11
Liz Murphey Classic .....	2nd of 18
SEC Championship .....	1st of 12
Lady Buckeye Invitational .....	1st of 15
NCAA East Region .....	6th of 21
NCAA Championship .....	12th of 24



2006-07 TEAM

### 2006-07 (157-42-0)

Fall Preview .....	4th of 17
Lady Tar Heel Invitational .....	8th of 17
UT Mercedes Invitational .....	3rd of 15
Derby Invitational .....	1st of 17
Hooters Collegiate Match Play .....	5th of 16



Lady Puerto Rico Classic.....	1st of 16
LSU/Cleveland Classic.....	3rd of 21
Liz Murphey Collegiate Classic.....	1st of 18
Bryan National Collegiate.....	7th of 18
SEC Championship.....	8th of 12
NCAA East Regional.....	4th of 21
NCAA Championship.....	9th of 24



2007-08 TEAM

**2007-08 (139-56-7)**

Mason Rudolph Championship.....	t-6th of 19
Fall Preview.....	t-6th of 18
Lady Tar Heel Invitational.....	t-3rd of 18
Mercedes-Benz Collegiate.....	4th of 17
UA-Ann Rhoads Inter.....	2nd of 18
Hooters Collegiate Match Play.....	t-7th of 16
Wildcat Invitational.....	t-9th of 16
UCF Challenge.....	8th of 18
Liz Murphey Collegiate.....	7th of 18
Bryan National Collegiate.....	3rd of 18
SEC Championship.....	4th of 12
NCAA East Regional.....	4th of 21
NCAA Championship.....	t-12th of 24



2008-09 TEAM

**2008-09 (132-39-1)**

NCAA Fall Preview.....	7th of 15
Mason Rudolph Championship.....	9th of 17
Lady Tar Heel Invitational.....	5th of 18
Derby Invitational.....	4th of 17
Hooters Collegiate Match Play.....	6th of 16
Central Distric Invitational.....	1st of 15
Central Florida Challenge.....	5th of 18
Liz Murphey Collegiate Challenge.....	1st of 18
SunTrust Lady Gator Invitational.....	1st of 16
SEC Championship.....	1st of 12
NCAA East Regional.....	10th of 21



2009-10 TEAM

**2009-10 (153-43-5)**

Hooters Collegiate Match Play.....	t-3rd of 16
Mason Rudolph Championship.....	3rd of 17
Lady Tar Heel Invitational.....	2nd of 18
NCAA Fall Preview.....	t-2nd of 18
Arizona Wildcat Invitational.....	8th of 16
Auburn Invitational.....	1st of 4
Tiger/Wave Golf Classic.....	1st of 23
Liz Murphey Collegiate Challenge.....	t-4th of 23
Bryan National Collegiate.....	12th of 18
SEC Championship.....	5th of 12
NCAA East Regional.....	t-3rd of 24
NCAA Championship.....	t-11th of 24



2010-11 TEAM

**2010-11 (95-78-2)**

NCAA Fall Preview.....	12th of 18
Mason Rudolph Championship.....	12th of 17
Tar Heel Invitational.....	T13th of 18
Pac-10/SEC Challenge.....	5th of 21
Puerto Rico Invitational.....	11th of 18
Allstate Sugar Bowl Intercollegiate.....	10th of 17
Battle at Rancho Bernardo Inn.....	5th of 17
Liz Murphey Collegiate Classic.....	T6th of 23
SEC Championship.....	1st of 12
NCAA Regional Championship.....	13th of 24

## TOURNAMENT HISTORY

### TEAM RECORDS

Auburn Record (1975-2011): 3,026-1,321-40  
 Most wins in a season: 178 (2005-06)  
 Most losses in a season: 87 (1985-86)  
 Best SEC Finish: 1st (1989, 1996, 2000, 2003, 2005, 2006, 2009, 2011)  
 Best NCAA Regional Finish: 1st (2005)  
 Best NCAA Championship Finish: t-2nd (2002)

### LOW TOTAL

849, Lady Buckeye Invite (2006)  
 861, SEC Championship (2010)  
 864, SEC Championship (2002, 2011), Wildcat Invitational (2006)  
 867, NCAA East Regional (2003)

### LOW ROUNDS

271, ACC/SEC Challenge (2004)\*  
 278, Fall Preview (2004), Lady Gamecock Classic (2006), Mason Rudolph (2009)

### LOW ROUND AVERAGE (TOURNAMENT)

280.0, SEC Championship (2002)  
 281.5, Mason Rudolph Championship (2009)  
 283.0, Lady Buckeye Invite (2006)  
 287.0, SEC Championship (2010)  
 288.0, Wildcat Invitational (2006)

### LOW ROUND AVERAGE (SEASON)

293.67, (2005-06)

### TOURNAMENT RESULTS

Alabama-Seascape Invitational: '85 (13-15)  
 Allstate Sugar Bowl Intercollegiate: '11 (10-17)  
 Ann Rhoads Intercollegiate: '07 (2-18)  
 ACC-SEC Challenge: '00 (1-12), '02 (1-12), '03 (3-11), '04 (2-16)  
 Arizona Wildcat Invitational: '02 (2-18), '06 (5-18), '08 (t9-16), '10 (8-16)  
 Auburn Invitational: '10 (1-3)  
 Battle at Rancho Bernardo Inn: '11 (5-17)  
 Bryan National Collegiate: '04 (5-18), '05 (7-17), '07 (7-18), '08 (3-18), '10 (12-18)  
 Canceled Classic: '86 (4-7)  
 Carolyn Cudone Intercollegiate: '92 (11-15), '93 (3-16), '94 (8-12), '95 (13-15)  
 Casa de Campo: '00 (2-11)  
 Central District Invitational: '09 (1-15)  
 Central Florida Challenge: '09 (5-18)  
 Central Florida Invitational: '08 (8-18)  
 Cougar Classic: '05 (4-17)  
 Country Club of Alabama (Hudson Industries Inv.): '86 (9-21), '87 (7-13), '88 (1-14), '89 (2-18), '90 (1-9), '91 (2-8), '92 (3-10)  
 The Derby: '94 (1-12), '95 (3-12), '96 (2-12), '97 (5-12), '98 (6-12), '99 (2-13), '00 (1-12), '01 (2-12), '02 (t4-13), '05 (1-17), '06 (1-17), '08 (4-17)  
 Dick McGuire Invitational: '88 (10-17), '89 (3-18)  
 Duke Fall Invitational: '85 (6-12)  
 Duke Spring Invitational: '89 (5-19), '95 (10-17), '96 (6-15)  
 Fripp Island Invitational: '97 (3-17), '98 (4-18)  
 Georgia Golf Invitational: '89 (1-11)  
 GolfWorld Invitational: '90 (7-12), '00 (1-12)  
 Hooters Collegiate Match Play: '04 (4-16), '06 (5-16), '07 (t7-16), '08 (6-16), '09 (1-16)  
 Illinois Spring Classic: '87 (6-10), '88 (2-9)  
 Josten's Invitational: '93 (12-17)  
 Lady Buckeye Invitational: '90 (14-19), '06 (1-15)  
 Lady Gamecock Classic: '91 (5-13), '97 (5-15), '06 (1-11)  
 Lady Gator Invitational: '88 (7-12), '89 (5-12), '90 (3-2), '91 (11-12), '92 (6-12), '93 (8-12), '94 (6-12), '95 (3-13), '96 (3-13), '97 (4-15), '98 (7-19), '99 (5-19), '00 (4-15), '01 (1-17), '04 (t4-15), '05 (2-19), '09 (1-16)  
 Lady Kat Invitational: '88 (2-19), '89 (1-17)  
 Lady Paladín Invitational: '86 (11-14), '87 (7-10), '88 (5-8), '91 (7-9), '92 (6-9), '93 (7-14), '94 (6-23), '95 (3-23), '96 (4-21), '97 (t4-21), '98 (2-18), '99 (3-24), '00 (1-22), '01 (1-21), '04 (3-23)  
 Lady Puerto Rico Invitational: '04 (7-15), '05 (1-14), '07 (1-16), '11 (11-18)  
 Lady Rebel Intercollegiate: '96 (1-15)  
 Lady Seminole Invitational: '85 (12-19), '87 (t7-19), '96 (4-19), '98 (3-20)  
 Lady Sun Devil Invitational: '89 (4-17), '90 (8-18), '91 (6-17)

Lady Tar Heel Invitational: '86 (11-16), '87 (7-18), '94 (8-15), '95 (t5-18), '99 (3-15), '03 (t3-9), '04 (2-9), '05 (2-18), '06 (8-17), '07 (t3-18), '08 (5-18)  
 Lexel Golf: '94 (4-21)  
 Liz Murphey Collegiate Classic (WSIC): '86 (13-16), '87 (10-17), '88 (3-16), '89 (1-11), '90 (3-13), '91 (2-13), '92 (8-17), '93 (t12-19), '94 (5-20), '95 (11-15), '96 (3-22), '97 (2-19), '98 (t5-17), '99 (8-18), '00 (5-17), '01 (3-18), '02 (2-18), '04 (5-18), '05 (t3-19), '06 (2-18), '07 (1-18), '08 (7-18), '09 (1-18), '10 (t4-23), '11 (t6-23)  
 LSU/Cleveland Classic: '86 (8-15), '88 (5-15), '89 (3-14), '92 (7-16), '93 (16-17), '94 (t6-18), '95 (6-15), '96 (3-18), '01 (2-11), '02 (1-13), '06 (1-18), '07 (3-21)  
 Margaret Moses Branch Fall Preview: '07 (t6-18)  
 Mason Rudolph Championship: '03 (7-17), '05 (5-15), '07 (t6-19), '08 (9-17), '09 (3-17), '10 (12-17)  
 Memphis Women's Intercollegiate: '85 (13-17), '86 (8-18), '97 (3-15)  
 Mercedes-Benz Collegiate: '97 (t12-18), '98 (4-16), '99 (7-18), '01 (2-14), '02 (1-15), '06 (3-15), '07 (4-17)  
 NCAA Championship: '89 (13-17), '90 (8-17), '96 (18-18), '97 (3-15), '98 (19-19), '99 (t15-19), '00 (6-24), '01 (4-24), '02 (t2-24), '03 (9-24), '05 (3-24), '06 (12-24), '07 (9-24), '08 (t12-24), '10 (t11-24)  
 NCAA Central Regional: '05 (1-21)  
 NCAA East Regional: '93 (t12-18), '94 (9-19), '96 (t5-19), '97 (3-19), '98 (t7-19), '99 (8-19), '00 (t7-14), '01 (2-21), '02 (2-21), '03 (4-21), '04 (11-21), '06 (6-21), '07 (4-21), '08 (4-21), '09 (10-21), '10 (t3-24), '11 (13-24)  
 NCAA Fall Preview: '99 (18-21), '00 (6-21), '01 (1-24), '02 (5-18), '03 (t1-18), '04 (5-21), '06 (4-21), '08 (7-15), '09 (t2-18), '10 (12-18)  
 North Carolina-Woodbridge: '92 (9-10), '93 (t8-9)  
 OSU-SMU Reg. Challenge: '99 (10-18)  
 PAC-10/SEC Challenge: '10 (5-21)  
 Peggy Kirk Bell Invitational: '86 (3-15)  
 Pepperdine Invitational: '96 (2-9)  
 PING/Tulsa Intercollegiate: '90 (7-9)  
 SEC Championship: '86 (6-7), '87 (4-8), '88 (4-9), '89 (1-9), '90 (2-9), '91 (6-9), '92 (8-10), '93 (7-11), '94 (3-11), '95 (t6-11), '96 (1-12), '97 (5-12), '98 (5-12), '99 (6-12), '00 (1-12), '01 (3-12), '02 (2-12), '03 (1-12), '04 (2-12), '05 (1-12), '06 (1-12), '07 (8-12), '08 (4-12), '09 (1-12), '10 (5-12), '11 (1-12)  
 Tar Heel Invitational: '09 (2-18), '10 (t13-18)  
 Thompson Rainbow Wahine Classic: '99 (9-15)  
 Tiger-Tide Invitational: '86 (6-17), '87 (7-18), '88 (3-13), '89 (2-20), '90 (6-19), '91 (7-15), '92 (4-18), '93 (14-20)  
 Tiger/Wave Golf Classic: '10 (1-23)  
 Topy Cup/U.S.-Japan Collegiate: '01 (1-5)  
 U.S. International Invitational: '86 (8-15), '87 (3-11)  
 Yamaha Holiday Classic: '90 (4-11)

### Coaching Records

Years	Coach	Yrs.	W	L	T	Pct.
1972-75	Mary Lou Morgan	3	Records Unavailable			
1975-81	Ron Murphy	6	74	86	0	.463
1985-91	Bud Marsee	6	527	303	1	.635
1991-94	Virginia Derby	3	184	197	3	.483
1995-	Kim Evans	18	2210	728	36	.749
<b>Total</b>		<b>36</b>	<b>2995</b>	<b>1314</b>	<b>40</b>	<b>.693</b>



**Bud Marsee**  
1985-91



**Virginia Derby**  
1991-94



**Kim Evans**  
1995-present



**LOW 18-HOLE SCORE**

- 1. 64 Diana Ramage (2004)
- 2. 66 Cydney Clanton (2010)  
Candace Schepperle (2009)  
Candace Schepperle (2008)  
Cydney Clanton (2008)  
Maria Martinez (2003)
- 7. 67 Patricia Sanz (2011)  
Cydney Clanton (2011)  
Cydney Clanton (2010)  
Candace Schepperle (2009)  
Cydney Clanton (2009)  
Candace Schepperle (2008)  
Nicole Hage (2004)  
Maria Martinez (2004)  
Courtney Swaim (2002)  
Marci Clemons (1996)
- 17. 68 Cydney Clanton (2010)  
Cydney Clanton (2010)  
Carlie Yadloczky (2010)  
Cydney Clanton (2009)  
Candace Schepperle (2009)  
Haley Wilson (2009)  
Cydney Clanton (2007)  
Cydney Clanton (2007)  
Cydney Clanton (2007)  
Nicole Hage (2007)  
Nicole Hage (2006)  
Maria Martinez (2004)  
Danielle Downey (2002)  
Courtney Swaim (2001)  
Celeste Troche (2001)  
Celeste Troche (2001)  
Celeste Troche (2001)  
Celeste Troche (2000)



*Diana Ramage*



*Maria Martinez*

**LOW 36-HOLE SCORE**

- 1. 135 Cydney Clanton (2009)
- 2. 136 Maria Martinez (2006)
- 3. 137 Cydney Clanton (2010)  
Candace Schepperle (2008)
- 4. 138 Nicole Hage (2007)
- 5. 139 Candace Schepperle (2009)  
Candace Schepperle (2009)  
Candace Schepperle (2008)
- 8. 140 Cydney Clanton (2009)  
Candace Schepperle (2008)  
Cydney Clanton (2008)  
Mariana Macias (2007)  
Nicole Hage (2006)  
Jessica Lovell (2006)



*Nicole Hage*

**LOW 54-HOLE SCORE**

- 1. 206 Diana Ramage (2004)
- 2. 207 Nicole Hage (2007)  
Maria Martinez (2006)
- 4. 208 Cydney Clanton (2010)
- 5. 209 Candace Schepperle (2008)  
Maria Martinez (2005)
- 7. 210 Cydney Clanton (2009)  
Cydney Clanton (2007)  
Cydney Clanton (2007)  
Celeste Troche (2000)



*Celeste Troche*

**MOST SUB-PAR ROUNDS**

- Season: 16, Cydney Clanton (2009-10)  
14, Maria Martinez (2005-06)  
13, Celeste Troche (2000-01)  
12, Celeste Troche (2001-02)  
11, Cydney Clanton (2010-11)  
9, Diana Ramage (2000-05)  
9, Marci Clemons (1995-96)  
9, Nicole Hage (2005-06)  
9, Candace Schepperle (2008-09)
- Career: 39, Cydney Clanton (2007-pres.)  
35, Celeste Troche (1999-2003)  
23, Nicole Hage (2003-07)  
23, Diana Ramage (2000-05)  
23, Maria Martinez (2002-06)

**TOURNAMENT CHAMPION LEADERS**

- 1. Maria Martinez 5
- 2. Robin Cook 4  
Marci Clemons 4  
Diana Ramage 4
- 5. Danielle Downey 3  
Margaret Platt 3  
Cydney Clanton 3
- 8. Celeste Troche 2  
Barbara Paul 2
- 10. Kami Smith 1  
Joal Rieder 1  
Diane Rama 1  
Missy Tuck 1  
Courtney Swaim 1  
Marisa Milligan 1



*Robin Cook*

**LOW STROKE AVERAGE (SEASON)**

Name	Year	Tourns.	Average
1. Cydney Clanton	2009-10	11	71.45
2. Maria Martinez	2005-06	12	71.89
3. Candace Schepperle	2008-09	11	72.00
4. Cydney Clanton	2010-11	8	72.29
5. Celeste Troche	2000-01	11	72.45
6. Diana Ramage	2004-05	11	73.00
7. Celeste Troche	2001-02	12	73.05
8. Danielle Downey	2001-02	11	73.51
9. Cydney Clanton	2007-08	13	73.54
10. Candace Schepperle	2009-10	11	73.69

**LOW STROKE AVERAGE (CAREER)**

Name	Years	Tourns.	Average
1. Cydney Clanton	2007-11	43	72.98
2. Celeste Troche	1999-03	45	73.66
3. Candace Schepperle	2006-10	44	73.91
4. Nicole Hage	2003-07	46	74.17
5. Maria Martinez	2002-06	43	74.21
6. Diana Ramage	2000-05	44	74.41
7. Danielle Downey	1999-03	41	74.70
8. Haley Wilson	2009-present	27	75.03
9. Margaret Shirley	2004-08	46	75.46
10. Carlie Yadloczky	2009-present	18	75.66

**TOURNAMENTS (CAREER)**

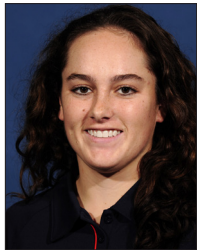
	Name	Years	Number
1.	Courtney Swaim	1998-02	46
	Robin Cook	1995-99	46
	Nicole Hage	2003-07	46
	Margaret Shirley	2004-08	46
5.	Celeste Troche	1999-03	45
	Marty Goldthorp	1995-99	45
7.	Diana Ramage	2000-05	44
	Candace Schepperle	2006-10	44
9.	Cydney Clanton	2007-11	43
	Maria Martinez	2002-06	43
	Katie Gallina	1994-98	43

**TOURNAMENT CHAMPIONS**

1987	Margaret Platt	SEC Championship
1988	Margaret Platt	Lady Kat Invitational
1989	Margaret Platt	LSU-Fairwood Invitational
1989	Joal Rieder	Georgia Invitational
1989	Diane Rama	SEC Championship
1990	Missy Tuck	Country Club of Alabama
1992	Barbara Paul	Country Club of Alabama
1992	Barbara Paul	Tiger-Tide Invitational
1995	Marci Clemons	Lady Tar Heel Invitational
1995	Marci Clemons	Lady Paladin Invitational
1996	Marci Clemons	SEC Championship
1996	Robin Cook	Auburn Tiger Invitational
1996	Robin Cook	Pepperdine Invitational
1996	Marci Clemons	Lady Rebel Intercollegiate
1998	Robin Cook	Fripp Island/Hogan Inter.
1998	Robin Cook	Lady Paladin Invitational
1999	Kami Smith	Auburn Tiger-Derby
1999	Danielle Downey	Lady Tar Heel Invitational
2000	Danielle Downey	Casa de Campo
2000	Danielle Downey	SEC Championship
2000	Celeste Troche	Lady Paladin Invitational
2000	Celeste Troche	ACC/SEC Challenge
2002	Courtney Swaim	Auburn One-Day Inv.
2002	Diana Ramage	ACC/SEC Challenge
2004	Maria Martinez	Franklin Street Partners Inv.
2004	Diana Ramage	ACC/SEC Challenge
2005	Diana Ramage	Lady Puerto Rico Classic
2005	Diana Ramage	NCAA Central Regional
2005	Maria Martinez	Derby Invitational
2006	Maria Martinez	Lady Gamecock Classic
2006	Maria Martinez	SEC Championship
2006	Maria Martinez	Lady Buckeye Classic
2006	Marisa Milligan	Derby Invitational
2007	Cydney Clanton	Mercedes-Benz Champ.
2009	Cydney Clanton	Hooters Coll. Match Play
2009	Cydney Clanton	NCAA Fall Preview

# AUBURN PLAYERS IN THE PROFESSIONAL RANKS

## LPGA TOUR



*Karlin Beck*



*Cydney Clanton*



*Stephanie Comstock*



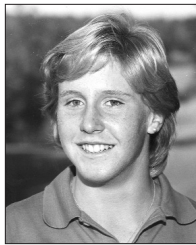
*Danielle Downey*



*Nicole Hage*



*Maria Martinez*



*Margaret Platt*



*Diana Ramage*



*Joal Reider*



*Celeste Troche*

## FUTURES TOUR



*Karlin Beck*



*Cydney Clanton*



*Stephanie Comstock*



*Danielle Downey*



*Nicole Hage*



*Maria Marti nez*



*Candace Schepperle*



*Courtney Trimble*

# AUBURN ALL-AMERICANS

<b>1987</b> Margaret Platt (first-team)	<b>1999</b> Robin Cook (second-team)	Maria Martinez (second-team) Nicole Hage (honorable mention)
<b>1989</b> Margaret Platt (first-team) Joal Rieder (honorable mention) Diane Rama (honorable mention)	<b>2000</b> Danielle Downey (second-team) Celeste Troche (second-team)	<b>2006</b> Maria Martinez (first-team) Nicole Hage (honorable mention)
<b>1990</b> Joal Rieder (honorable mention) Missy Tuck (honorable mention)	<b>2001</b> Celeste Troche (first-team)	<b>2007</b> Nicole Hage (third-team)
<b>1995</b> Marci Clemons (third-team)	<b>2002</b> Courtney Swaim (first-team) Celeste Troche (first-team) Danielle Downey (second-team)	<b>2008</b> Cydney Clanton (first-team)
<b>1996</b> Marci Clemons (second-team)	<b>2003</b> Celeste Troche (second-team) Danielle Downey (honorable mention)	<b>2009</b> Candace Schepperle (first-team) Cydney Clanton (honorable mention)
<b>1997</b> Katie Gallina (honorable mention)	<b>2004</b> Nicole Hage (second-team)	<b>2010</b> Cydney Clanton (first-team) Candace Schepperle (honorable mention)
<b>1998</b> Robin Cook (second-team)	<b>2005</b> Diana Ramage (first-team)	<b>2011</b> Cydney Clanton (second-team)



*Cydney Clanton*



*Marci Clemons*



*Robin Cook*



*Danielle Downey*



*Candace Schepperle*



*Missy Tuck*



*Katie Gallina*



*Nicole Hage*



*Maria Martinez*



*Barbara Paul*



*Courtney Swaim*



*Margaret Platt*



*Diane Rama*



*Diana Ramage*



*Joal Reider*



*Celeste Troche*

## POST-SEASON HONORS

### ALL-SEC

#### 1987

Margaret Platt (first-team)

#### 1989

Margaret Platt (first-team)

Diane Rama (HM)

#### 1990

Joal Rieder (first-team)

Missy Tuck (first-team)

#### 1993

Barbara Paul (first-team)

#### 1994

Barbara Paul (first-team)

#### 1995

Marci Clemons (first-team)

Katie Gallina (HM)

#### 1996

Marci Clemons (first-team)

Robin Cook (second-team)

Katie Gallina (HM)

#### 1997

Katie Gallina (first-team)

Robin Cook (first-team)

Marci Clemons (second-team)

Marty Goldthorp (HM)

#### 1998

Robin Cook (first-team)

Marty Goldthorp (HM)

Kami Smith (HM)

#### 1999

Robin Cook (first-team)

Courtney Swaim (second-team)

Kami Smith (HM)

#### 2000

Danielle Downey (first-team)

Celeste Troche (first-team)

#### 2001

Celeste Troche (first-team)

Danielle Downey (second-team)

Diana Ramage (second-team)

Courtney Swaim (second-team)

#### 2002

Danielle Downey (first-team)

Courtney Swaim (first-team)

Celeste Troche (first-team)

Kingsley Barrett (second-team)

#### 2003

Danielle Downey (first-team)

Diana Ramage (first-team)

Celeste Troche (first-team)

Maria Martinez (second-team)

#### 2004

Nicole Hage (first-team)

Maria Martinez (first-team)

#### 2005

Maria Martinez (first-team)

Diana Ramage (first-team)

Nicole Hage (second-team)

#### 2006

Maria Martinez (first-team)

Nicole Hage (second-team)

Margaret Shirley (second-team)

#### 2007

Nicole Hage (first-team)

Candace Schepperle (second-team)

Margaret Shirley (second-team)

#### 2008

Cydney Clanton (first-team, freshman team)

Candace Schepperle (second-team)

Margaret Shirley (second-team)

#### 2009

Cydney Clanton (first-team)

Candace Schepperle (first-team)

Haley Wilson (second-team, freshman team)

#### 2010

Cydney Clanton (first-team)

Candace Schepperle (second team)

Charlie Yadloczky (freshman team)

#### 2011

Cydney Clanton (first-team)

Marta Sanz (freshman team)

### SEC ACADEMIC HONOR ROLL

#### 1986

Johandra Culp (Physical Education)

#### 1987

Meg Cimino (Liberal Arts)

#### 1988

Anne Jones (International Business)

#### 1989

Anne Jones (International Business)

#### 1990

Anne Jones (International Business), Missy Tuck

(Liberal Arts)

#### 1993

Amy Miller (Journalism), Caren Felps (Rehabilitation & Special Services)

#### 1995

Marci Clemons (Accounting), Amy Miller-Davis (Journalism)

#### 1996

Marci Clemons (Accounting)

#### 1997

Marci Clemons (Accounting), Katie Gallina (Early Childhood Special Educaiton), Marty Goldthorp (Finance)

#### 1998

Katie Gallina (Early Childhood Special Education), Marty Goldthorp (Finance), Kami Smith (Accounting)

#### 1999

Crystal Ferrier (Pre-Business), Marty Goldthorp (Finance), Kami Smith (Accounting)

#### 2000

Crystal Ferrier (Pre-Business), Audrey Fisher (Health Promotion), Kami Smith (Accounting), Kimberly Strong (Pre-Business)

#### 2001

Celeste Troche (International Business)

#### 2002

Courtney Swaim (Business), Celeste Troche (International Business)

#### 2003

Celeste Troche (International Business), Kingsley Barrett (Business)

#### 2004

Kingsley Barrett (Accounting), Meghan Ciampi (Family Studies), Jennifer Head (Sociology), Jessica Lovell (Marketing), Maria Martinez (International Business)

#### 2005

Kingsley Barrett (Accounting), Meghan Ciampi (Family Studies), Jennifer Head (Sociology), Jessica Lovell (Marketing), Maria Martinez (International Business), Diana Ramage (Hotel and Restaurant Management)

#### 2006

Betsy Boyd (Marketing), Jessica Lovell (Marketing), Maria Martinez (International Business)

#### 2007

Betsy Boyd (Marketing), Lauren Hawkins (Finance), Jessica Lovell (Marketing), Mariana Macias (International Business), Marisa Milligan (Health Promotion), Margaret Shirley (Communications)

#### 2008

Karlin Beck (Pre-Business), Lauren Hawkins (Economics), Mariana Macias (International Business), Margaret Shirley (Communication)

#### 2009

Karlin Beck (Accounting), Lauren Hawkins (Finance), Mariana Macias (International Business), Sarah Thead (Economics)

#### 2010

Karlin Beck (Accounting), Madison Overbey (Marketing), Patricia Sanz (Biomedical Sciences)

#### 2011

Madison Overbey (Marketing), Patricia Sanz (Biomedical Sciences)

### NGCA ALL-AMERICAN SCHOLAR

1995: Marci Clemons (Accounting)

1996: Marci Clemons (Accounting)

1997: Marci Clemons (Accounting)

1998: Kami Smith (Accounting)

1999: Kami Smith (Accounting)

2000: Kami Smith (Accounting)

2002: Celeste Troche (International Business)

2003: Celeste Troche (International Business)

2008: Sarah Thead (Economics)

2009: Patricia Sanz (Microbiology)

Sarah Thead (Economics)

2010: Patricia Sanz (Microbiology)

2011: Patricia Sanz (Microbiology)

### SEC GOLFER OF THE YEAR

1989: Margaret Platt

1996: Marci Clemons

1999: Robin Cook

2001: Celeste Troche

2004: Nicole Hage (Co-Golfer)

2006: Maria Martinez

2009: Candace Schepperle

### SEC FRESHMAN OF THE YEAR

2000: Celeste Troche

2001: Diana Ramage

2002: Kingsley Barrett

2004: Nicole Hage

2007: Candace Schepperle

2008: Cydney Clanton

### SEC COACH OF THE YEAR

1988: Bud Marsee

1989: Bud Marsee

1996: Kim Evans

2001: Kim Evans

2002: Kim Evans

2009: Kim Evans

### NGCA ALL-REGION TEAM

2010: Charlie Yadloczky

### REGIONAL COACH OF THE YEAR

1988: Bud Marsee

1989: Bud Marsee

1990: Bud Marsee

1996: Kim Evans

2001: Kim Evans

2002: Kim Evans

### NGCA NATIONAL COACH OF THE YEAR

2002: Kim Evans

### NGCA NATIONAL FRESHMAN OF THE YEAR

2008: Cydney Clanton

### SEC INDIVIDUAL CHAMPIONS

1987: Margaret Platt

1989: Diane Rama

1996: Marci Clemons

2000: Danielle Downey

2006: Maria Martinez

### SEC TEAM CHAMPIONS

1989 - Score: 299-298-305--902

1996 - Score: 298-306--604

2000 - Score: 306-306-307--919

2003 - Score: 299-297-307--903

2005 - Score: 291-302-311-904\*

2006 - Score: 300- 282-293--875

2009 - Score: 289-296-285--870

\* Won in a playoff with Georgia

### NCAA REGIONAL INDIVIDUAL CHAMPIONS

2005: Diana Ramage

### NCAA REGIONAL TEAM CHAMPIONS

2005 - Score: 294-309-293--896

### DINAH SHORE AWARD

1996: Marci Clemons

### EDITH MUNSON AWARD

1996: Marci Clemons



**USA-JAPAN CHAMPIONSHIP**

1990: Missy Tuck  
 1998: Robin Cook (Individual Champion)  
 2000: Danielle Downey  
 2002: Danielle Downey

**U.S. WOMEN'S OPEN**

1987: Virginia Derby-Grimes  
 1990: Virginia Derby-Grimes  
 1994: Missy Tuck Gordon  
 1995: Virginia Derby-Grimes  
 1998: Virginia Derby-Grimes  
 2000: Virginia Derby-Grimes  
 2001: Diana Ramage  
 Celeste Troche  
 2002: Courtney Swaim  
 2004: Courtney Swaim  
 2006: Nicole Hage  
 2007: Nicole Hage  
 2008: Cydney Clanton  
 Nicole Hage  
 2009: Nicole Hage  
 Candace Schepperle

**NCAA EAST-WEST**

**All-Star Challenge**

1989: Margaret Platt  
 1990: Joal Rieder  
 1996: Marci Clemons  
 1997: Katie Gallina  
 1998: Robin Cook  
 1999: Robin Cook  
 2000: Celeste Troche

**WORLD AMATEUR TEAM CHAMPIONSHIP**

2000: Celeste Troche (Paraguay)  
 9th individual  
 2004: Maria Martinez (Venezuela)  
 4th individual  
 2010: Cydney Clanton (United States)  
 T8th individual  
 2010: Diana Fernandez (Paraguay)  
 T53rd individual

**ALABAMA SPORTS HALL OF FAME**

2004: Virginia Derby-Grimes

**CURTIS CUP**

1990: Margaret Platt  
 1998: Virginia Derby-Grimes  
 2000: Virginia Derby-Grimes  
 2002: Courtney Swaim  
 2006: Virginia Derby-Grimes  
 2010: Cydney Clanton



Auburn coach Kim Evans and Curtis Cup Champion Courtney Swaim.

**A**  
 Cam Abascal 1980-81

**B**  
 Jane Baker 1975-78  
 Kingsley Barrett 2002-05  
 Karlin Beck 2007-11  
 Kristie Bowen 1990-92  
 Ann Allen Brown 1976  
 Susan Brugon 1985-86

**C**  
 Meghan Ciampi 2002-05  
 Meg Cimino 1985-88  
 Cydney Clanton 2008-11  
 Karen Clark 1979-81  
 Marci Clemons 1994-97  
 Stephanie Comstock 1990-92  
 Robin Cook 1996-99  
 Johandra Culp 1985  
 Caroline Culver 1978  
 Kathryn Cypherd 1993-94

**D**  
 Sue Dempsey 1974, 1976  
 Virginia Derby 1985  
 Danielle Downey 2000-03

**E**  
 Kim Evans 1978-81

**F**  
 Krulien Fairley 1977-78  
 Caren Beth Felps 1992-95  
**Diana Fernandez** 2011-  
 Crystal Ferrier 1998-00  
 Audrey Fisher 1998-00

**G**  
 Katie Gallina 1995-98  
 Rebeca Garcia 1990-93  
 Kathy Ghioto 1980-81  
 Patrice Giddings 1985-86  
 Marty Goldthorp 1996-99

**H**  
 Dori Hale 1994  
 Nicole Hage 2004-07  
 Lauren Hawkins 2007-09  
 Reba Haynes 1976-78  
 Jennifer Head 2003-04  
 Leigh Head 1985-88  
 Linda Hogue 1978-81  
 Anne Hutto 2000-02

**J**  
 Jan Jehle 1974, 1976  
 Anne Jones 1987-90

**K**  
 Sue Karamanian 1976  
 Kim Kelly 1978-81  
 Casey Kennedy 2010  
 Mary Pat Kircher 1974-77  
 Regina Korinek 1990-93  
 Cheryl Knorr 1974

**L**  
 Tricia Laxton 1993-94  
 Jessica Lovell 2004-07

**M**  
 Mariana Macias 2006-09  
 Sally Marble 1976  
 Maria Martinez 2003-06  
 Julie McAlevy 1987-88  
 Diana Miles 1985-88  
 Amy Miller 1992-95  
 Marisa Milligan 2007-08  
 Martha Monl 1980-81

**O**  
 Robin O'Leary 1978  
 Susan Otolski 1986-89  
 Madison Overbey 2009-2011

**P**  
 Barbara Paul 1991-94  
 Gina Piatt 1978-81

Margaret Platt 1986-89

**R**  
 Diane Rama 1987-90  
 Diana Ramage 2001-03, 2005  
 Sallie Ransom 1988-91  
 Ann Ranta 1978-81  
 Joal Rieder 1987-90

**S**  
 Kelly Sanders 1990-92  
**Marta Sanz** 2011-  
**Patricia Sanz** 2009-  
 Holly Sarvis 1985-86  
 Abigale Schepperle 2005-08  
 Candace Schepperle 2007-10  
 Kelly Selman 1980-81  
 Margaret Shirley 2005-08  
 Kami Smith 1997-00  
 Mary Stets 1977-78  
 Kimberly Strong 1999-02  
 Courtney Swaim 1999-02

**T**  
 Sarah Thead 2007-09  
 Sharon Thomas 1978-81  
 Celeste Troche 2000-02  
 Missy Tuck 1988-91  
 Lori Tynan 1974-76

**V**  
 Tracy Veto 1993-96  
 Wendy Veto 1998

**W**  
 Candy Walker 1976-78  
**Haley Wilson** 2009-  
 Rene Wolfe 1974, 1976  
 Janet Wooten 1991

**Y**  
**Charlie Yadloczky** 2010-

**AUBURN AWARDS**

**"100 PERCENT CLUB"**



**Marci Clemons**  
 (1992-96)



**Robin Cook**  
 (1995-99)



**Katie Gallina**  
 (1994-98)



**Nicole Hage**  
 (1994-07)



**Courtney Swaim**  
 (1998-2002)



**Celeste Troche**  
 (1999-2003)

To qualify for "Auburn's 100 Percent Club," a player must represent the Tigers at every possible tournament in her four years of collegiate golf. Just six Tigers have earned membership into this elite group.

**LEAH RAWLS ATKINS AWARD WINNERS**



**Marci Clemons**  
 1997



**Katie Gallina**  
 1998



**Celeste Troche**  
 2003

This award is presented annually to Auburn's top female student-athlete. The award is named after Leah Rawls Atkins, the first female to receive a doctorate from Auburn. She was a champion water skier and was the first woman to be inducted into the Alabama Sports Hall of Fame. There have been three women's golfers that have received this prestigious honor.

**SCHOLARSHIP ENDOWMENTS**

- Achievement of Excellence Endowment presented by George and Sue King
- Lynn Kurth Shaffer Endowment presented by family and friends of Lynn Kurth Shaffer
- Ann Cushman Sportsmanship Award presented by family and friends of Ann Cushman





**FORMER AUBURN  
PLAYER  
AND HEAD COACH  
VIRGINIA DERBY-  
GRIMES**

Since its inception in 1994, the Auburn Tiger-Derby Invitational has earned a reputation for being one of the nation's finest women's collegiate golf tournaments. The tournament gives each team an early barometer of how it stacks up against the top teams in the nation. The top teams in the country have graced The Derby and 2008 is no exception with a field including Alabama, Arizona State, Auburn, Central Florida, Coastal Carolina, Florida State, Furman, Georgia, Kansas, Kentucky, LSU, Ole Miss, Mississippi State, South Carolina, Chattanooga, Tulane and Virginia.

At the start of the 1998 event, the Auburn Tiger Invitational was renamed the Auburn Tiger-Derby Invitational beginning in 1999 in honor of Curtis Cup Champion and former Auburn player and coach, Virginia Derby-Grimes.

Grimes played at Auburn under legendary Coach Bud Marsee in 1985 when the women's golf program was re-instituted after a four-year hiatus. She then came back to coach the Tiger golf team for three years from 1991-94 while leading the team to a pair of NCAA East Regional berths. She orchestrated the beginning of the Auburn Tiger Invitational in 1994.

"We couldn't think of a more distinguished or better person to name our tournament after than Virginia Derby-Grimes," former Auburn athletic director David Housel said. "She has played at Auburn, coached at Auburn, represented Auburn worldwide and still puts her heart and soul into the Tiger program."

"Virginia is a great friend to the game of golf and an even bigger part of our Auburn Family."

Derby-Grimes, whose career is highly-decorated as being one of the top amateur players in the world, anchored the United States team to a thrilling

victory in the final day of the Curtis Cup in the summer of 1998. Grimes, who also was a part of the 2000 Curtis Cup championship team, was inducted into the Alabama Sports Hall of Fame in 2004. She won the 1998 U.S. Mid-Amateur title and was an alternate for the 1998 USA World Cup team. She is a former Alabama State Amateur Champion and Alabama Junior State Amateur Champion.

Another important milestone in the tournament's history came in the fall of 2001. With the team planning to attend a fall tournament in Japan, the decision was made to suspend the Derby Invitational for the year and pick it back up again in 2002.

In the wake of the Sept. 11 attacks, one of the top college tournaments in the nation, the Golf World Invitational, was cancelled. With the best teams in the country left without a place to play, the decision was made by the Auburn administration and coaching staff to conduct the Derby Invitational on the November dates of the Golf World Invitational, moving the Derby from its usual September date.

The tournament was a huge success with a field that included Duke and Virada Nirapathpongorn, who would go on to win the 2002 NCAA team and individual titles. Also in the field was Arizona's Lorena Ochoa, who won the tournament with a 6-under-par 210. Ochoa was named the 2007 LPGA Rolex Player of the Year and now has 24 LPGA victories to her credit.

Since the inaugural tournament held in 1994, the Auburn Tiger-Derby Invitational has consistently attracted top-quality teams and individuals, including several NCAA team and individual champions.

In 2008, the tournament field featured 11 teams ranked in the GolfWeek top 25, including No. 2 Arizona State, No. 4 Georgia, No. 6 Alabama, No. 7 Virginia, No. 12 Auburn and No. 13 LSU. Auburn went on to finish fourth with a 32-over-par 896. Candace Schepperle was the top Tiger, finishing fourth individually with an even-par 216.



**AUBURN AT THE 2008 DERBY INVITATIONAL**

## THE DERBY YEAR-BY-YEAR RESULTS

### 1994

1	Auburn	309-295--604
2	Miami	310-300--610
3	Central Florida	309-304--613
4	Georgia	315-299-614
5	South Alabama	313-317--630
6	Ole Miss	318-322--640
7	Troy State	324-323--647
8	Baylor	326-324--650
9	Winthrop	331-326--657
10	Alabama	334-326--660
11	Southern Miss	334-333--667
12	Samford	345-341--686

#### Individual Champion

Kristen Putman (UCF) 76-71--147

(Won in a playoff over Kacie Myers, Miami)

\* second round was rained out.

#### Auburn Individuals

3	Marci Clemons	74-74--148
T5	Tricia Laxton	78-73--151
T8	Katie Gallina	80-73--153
T10	Tracy Veto	79-75--154
T15	Amy Miller	78-78--156

### 1995

1	LSU	302-298--600
---	-----	--------------

2	Georgia	304-303--607
3	Auburn	299-317--616
4	Alabama	304-317--621
5	Central Florida	307-315--622
6	Ole Miss	308-315--623
7	Miami	310-315--625
8	Mississippi State	313-315--628
9	Georgia State	319-318--637
10	Samford	310-330--640
11	Arkansas	323-322--645
12	Troy State	323-327--650

#### Individual Champion

Erin O'Neil (Georgia) 74-71--145

\* second round was rained out.

#### Auburn Individuals

6	Marci Clemons	70-79--149
T7	Robin Cook	72-78--150
T28	Marty Goldthorp	80-79--159
T37	Katie Gallina	80-81--161
T45	Tracy Veto	77-86--163

### 1996

1	LSU	297-298--595
2	Auburn	297-300--597
3	Georgia	299-301--600
4	Florida State	300-302--602

5	South Florida	308-307--615
6	Troy State	307-310--617
7	Ole Miss	313-306--619
T8	Alabama	309-313--622
T8	Mississippi State	313-309--622
10	Miami	319-310--629
11	South Alabama	316-316--632
12	Central Florida	325-315--640

#### Individual Champion

Robin Cook (Auburn) 71-73--144

\* second round was rained out.

#### Auburn Individuals

1	Robin Cook	71-73--144 (1st)
T6	Marty Goldthorp	75-73--148 (t-6th)
T25	Katie Gallina	75-80--155 (t-25th)
T30	Beth Yahara	76-80--156 (t-30th)
T37	Marci Clemons	84-74--158 (t-37th)

### 1997

1	Georgia	294-291-291--876
2	LSU	296-290-293--879
3	Alabama	291-292-298--881
4	Mississippi State	306-300-293--899
5	Auburn	298-307-299--904
6	Florida State	297-300-311--908
7	Miami	305-295-309--909



8	Central Florida	304-302-312--918
9	Ole Miss	303-319-302--924
10	South Florida	311-306-308--925
11	Tulane	303-317-315--935
12	Troy State	310-319-323--952

**Individual Champion**

Kathryn Cusick (Alabama) 72-67-74--213  
(Won in a playoff over Katy Wilkinson, LSU)

**Auburn Individuals**

T8	Robin Cook	73-76-72--221
T12	Kami Smith	75-75-75--225
T28	Katie Gallina	74-80-75--229
T28	Marty Goldthorp	76-76-77--229
54	Wendy Veto	77-81-85--243

**1998**

1	Georgia	293-281--574
T2	Florida State	293-301--594
T2	Alabama	297-297--594
4	Ole Miss	299-298--597
5	LSU	298-300--598
6	Auburn	299-300--599
7	Furman	304-297--601
T8	Central Florida	311-299--610
T8	Tulane	308-302--610
10	Mississippi State	306-313--619
11	Florida	309-317--626
12	Miami	311-317--628

**Individual Champion**

Summer Sirmons (Georgia) 73-70--143  
(Won in a playoff over Robin Cook (Auburn),  
Shauna Estes (Georgia), Angela Jerman (Georgia)  
and Robyn Rinaldo (Ole Miss)  
\* final round canceled, Hurricane Georges.

**Auburn Individuals**

T2	Robin Cook	72-71--143
T6	Courtney Swaim	71-73--144
T32	Kami Smith	77-78--155
T32	Kimberly Strong (ind.)	74-81--155
T46	Marty Goldthorp	79-80--159
T52	Crystal Ferrier	82-78--160

**1999**

1	Georgia	296-291-299--886
2	Auburn	305-289-310--904
3	Tennessee	296-309-308--913
4	North Carolina	307-309-302--918
5	Ole Miss	310-308-301--919
6	Central Florida	301-314-305--920
7	Alabama	307-304-314--925
8	Georgia State	316-308-302--926
9	South Florida	307-313-310--930
10	Miami (Fla.)	314-312-313--939
11	Tulane	314-317-312--943
12	Southern Miss	333-318-314--965
13	UAB	328-324-319--971

**Individual Champion**

Kami Smith (Auburn) 74-68-74--216

**Auburn Individuals**

1	Kami Smith	74-68-74--216
T10	Celeste Troche	76-72-78--226
T27	Danielle Downey	80-73-79--232
T35	Kimberly Strong	80-76-79--235
T39	Courtney Swaim	75-78-83--236
T59	Crystal Ferrier (ind.)	82-81-85--248
T63	Audrey Fisher (ind.)	80-85-85--250

**2000**

1	Auburn	297-293-304--894
2	Mississippi State	297-309-303--909
3	Central Florida	307-298-306--911
T4	LSU	303-309-301--913
T4	Vanderbilt	307-302-304--913
6	Alabama	316-303-311--930
7	Florida State	313-311-311--935
8	North Carolina-Wilmington	306-322-309--937
9	South Florida	305-323-310--938

T10	Ole Miss	316-316-310--942
T10	Tulane	321-320-301--942
12	Georgia State	336-329-336--1001

**Individual Champion**

Lina Thoren (Mississippi State) 73-74-70--217

**Auburn Individuals**

2	Courtney Swaim	71-73-76--220
3	Celeste Troche	74-72-75--221
T7	Danielle Downey	77-74-74--225
T13	Diana Ramage	75-80-73--228
T18	Anne Hutto	76-74-79--229
T30	Kimberly Strong	76-80-79--235
65	Crystal Ferrier (ind.)	78-89-90--257

**2001**

1	Georgia	297-294-294--885
2	Auburn	308-288-294--890
3	Tennessee	294-298-300--892
T4	Arizona	303-304-292--899
T4	Duke	301-295-306--902
6	Oklahoma State	310-307-293--910
7	Tulsa	308-297-305--910
8	Southern California	309-302-303--914
9	Texas	309-302-308--919
T10	Pepperdine	301-315-311--927
T10	UCLA	310-309-309--928
12	Stanford	323-323-319--965

**Individual Champion**

Lorena Ochoa (Arizona) 67-73-70-210

**Auburn Individuals**

T5	Courtney Swaim	79-68-74--221
T13	Celeste Troche	76-76-72--224
T13	Diana Ramage	82-69-73--224
T22	Danielle Downey	76-76-75--227
T39	Anne Hutto	77-75-82--234
T19	Kimberly Strong (ind.)	69-77-80--226
T29	Kingsley Barrett (ind.)	76-80-74--230

**2002**

1	Tennessee	289-297-285--871
2	Texas	294-294-290--878
3	Arizona	296-293-293--882
T4	Auburn	291-297-295--883
T4	Duke	294-299-290-883
6	Florida	303-293-293--889
7	Southern California	296-304-297--897
8	South Carolina	299-300-301--900
9	Oklahoma State	300-301-301--902
10	Vanderbilt	308-294-304--906
11	Georgia	298-310-305--913
12	TCU	310-316-296--922
13	LSU	311-322-319--952

**Individual Champion**

Violeta Retamoza, Tenn. 67-73-70-210  
(Won on 3rd playoff hole over AU's Celeste Troche)

**Auburn Individuals**

T1	Celeste Troche	73-71-67--211
T7	Diana Ramage	69-73-77--219
T34	Maria Martinez	73-76-79--228
T34	Danielle Downey	76-77-75--228
	Anne Hutto (ind.)	79-76-79--234
T62	Kingsley Barrett(ind.)	82-79-76--237
69	Jennifer Head (ind.)	83-78-81--242
T73	Meghan Ciampi (ind.)	86-85-83--254

**2005**

1	Auburn	291-302-286--879
2	Duke	294-294-292--880
3	Georgia	294-305-293--892
4	Virginia	297-306-290--893
5	Tennessee	297-297-300--894
6	Florida	302-302-302--906
T7	South Carolina	301-310-298--909
T7	Oklahoma State	316-302-291--909
9	Alabama	310-300-302--912
10	LSU	308-310-299--917
11	Florida State	303-318-298--919
12	North Carolina State	315-307-302--924

13	Texas	308-307-314--929
14	Ole Miss	300-320-314--934
15	North Carolina-Wilmington	320-310-315--945
16	Kansas	317-319-311--947
17	West Florida	329-327-327--983

**Individual Champion**

Maria Martinez, Auburn 69-72-68--209

**Auburn Individuals**

1	Maria Martinez	69-72-68--209
T8	Abigale Schepperle	72-75-74--221
T21	Margaret Shirley	75-82-69--226
T37	Nicole Hage	75-79-75--229
T53	Jessica Lovell	81-76-76--233
64	Mariana Macias (ind.)	75-85-78--238

**2006**

1	Auburn	303-291--594
2	Alabama	308-298--606
3	Tennessee	309-299--608
4	North Carolina	301-308--609
T5	Florida	313-297--610
T5	Louisiana State	305-305--610
T5	South Carolina	311-299--610
8	Florida State	309-303--612
T9	Birmingham-Southern	315-300--615
T9	Nebraska	310-305--615
11	Ole Miss	309-308--617
12	Baylor	306-313--619
13	Furman	311-309--620
14	Central Florida	322-303--625
15	Kansas	327-309--636
16	Mississippi State	320-317--637
17	Texas	334-320--654

**Individual Champion**

Marisa Milligan, Auburn 74-71--145

**Auburn Individuals**

T2	Nicole Hage	76-70--146
T4	Margaret Shirley	72-75--147
T11	Abigale Schepperle	79-71--150
T17	Candace Schepperle	77-75--152
T34	Jessica Lovell	78-77--155
1	Marisa Milligan (ind.)	74-71--145
T47	Mariana Macias (ind.)	83-74--157

**2008**

1	Arizona State	300-284-285--869
2	Virginia	289-298-300--887
3	Alabama	294-302-296--892
4	Auburn	298-304-294--896
5	Ole Miss	305-305-293--903
6	Georgia	308-305-296--909
7	Louisiana State	314-300-297--911
8	South Carolina	310-304-306--920
9	Kentucky	315-308-297--920
10	Tulane	307-311-302--920
11	Tennessee-Chattanooga	317-306-302--925
12	Central Florida	310-316-300--926
13	Furman	309-313-307--929
14	Mississippi State	312-309-310--931
15	Kansas	311-306-314--931
16	Florida State	310-329-317--956
17	Coastal Carolina	324-321-326--971

**Individual Champion**

Anna Nordqvist, Arizona State 70-67-70--207

**Auburn Individuals**

4	Candace Schepperle	71-73-72--216
T10	Sarah Thead	75-74-74--223
T24	Cydney Clanton	73-83-72--228
T36	Patricia Sanz	82-74-76--232
T50	Mariana Macias (ind.)	79-77-78--234
T79	Madison Overbey	79-84-79--242



# TEAM RECORDS

## 54-Hole Lows

1.	869 (+5)	Arizona State	2008
2.	871 (+7)	Tennessee	2002
3.	876 (+12)	Georgia	1997
4.	878 (+14)	Texas	2002
5.	879 (+15)	LSU	1997
	879 (+15)	Auburn	2005
7.	880 (+16)	Duke	2005
8.	881 (+17)	Alabama	1997
9.	882 (+18)	Arizona	2002
10.	883 (+19)	Auburn	2002
	883 (+19)	Duke	2002

## 36-Hole Lows

1.	574 (-2)	Georgia	1998
2.	584 (+8)	Arizona State	2008
3.	587 (+11)	Virginia	2008
4.	588 (+12)	Duke	2005
5.	593 (+17)	Auburn	2005
6.	594 (+18)	Florida State	1998
	594 (+18)	Alabama	1998
	594 (+18)	Tennessee	2005
	594 (+18)	Auburn	2006
10.	595 (+19)	LSU	1996

## 18-Hole Lows

		Year, Round
1.	281 (-7)	Georgia 1998 2nd
2.	284 (-4)	Arizona State 2008, 1st
3.	285 (-3)	Tennessee 2002, 3rd
	285 (-3)	Arizona State 2008, 3rd
5.	286 (-2)	Auburn 2005, 3rd
6.	288 (E)	Auburn 2001, 2nd
7.	289 (+1)	Auburn 1999, 2nd
	289 (+1)	Tennessee 2002, 1st
	289 (+1)	Virginia 2008, 1st
10.	290 (+2)	LSU 1997, 2nd
	290 (+2)	Duke 2002, 3rd
	290 (+2)	Texas 2002, 3rd
	290 (+2)	Virginia 2005, 3rd

## Low First Round Scores

1.	289 (+1)	Tennessee	2002
	289 (+1)	Virginia	2008
3.	291 (+3)	Auburn	2005
	291 (+3)	Auburn	2002
	291 (+3)	Alabama	1997
6.	293 (+5)	Georgia	1996
	293 (+5)	Florida State	1998
8.	294 (+6)	Duke	2005
	294 (+6)	Georgia	2005
	294 (+6)	Georgia	1997
	294 (+6)	Tennessee	2001
	294 (+6)	Texas	2002
	294 (+6)	Duke	2002
	294 (+6)	Alabama	2008

## Low Second Round Scores

1.	281 (-7)	Georgia	1998
2.	284 (-4)	Arizona State	2008
3.	288 (E)	Auburn	2001
4.	289 (+1)	Auburn	1999
5.	290 (+2)	LSU	1997
6.	291 (+3)	Georgia	1997
	291 (+3)	Georgia	1999
	291 (+3)	Auburn	2006
9.	292 (+4)	Alabama	1997
10.	293 (+5)	Auburn	2000
	293 (+5)	Arizona	2002
	293 (+5)	Florida	2002

## Low Third Round Scores

1.	285 (-3)	Tennessee	2002
	285 (-3)	Arizona State	2008
2.	286 (-2)	Auburn	2005
3.	290 (+2)	Virginia	2005
	290 (+2)	Texas	2002
	290 (+2)	Duke	2002
6.	291 (+3)	Oklahoma State	2005
	291 (+3)	Georgia	1997
8.	292 (+4)	Duke	2005
	292 (+4)	Arizona	2001
10.	293 (+5)	Georgia	2005
	293 (+5)	LSU	1997
	293 (+5)	Mississippi State	1997
	293 (+5)	Oklahoma State	2001
	293 (+5)	Arizona	2002
	293 (+5)	Florida	2002
	293 (+5)	Ole Miss	2008

# INDIVIDUAL RECORDS

## Low Rounds

1.	67 (-5)	Celeste Troche, Auburn	2002
	67 (-5)	Violeta Retamoza, Tenn.	2002
	67 (-5)	Mary Jan Fernandez, Tenn.	2002
	67 (-5)	Kathryn Cusick, Alabama	1997
	67 (-5)	Lorena Ochoa, Arizona	2001
	67 (-5)	Anna Nordqvist, Arizona St.	2008
7.	68 (-4)	Maria Martinez, Auburn	2005
	68 (-4)	Courtney Swaim, Auburn	2001
	68 (-4)	Young-A Yang, Tennessee	2001
	68 (-4)	Kami Smith, Auburn	1999
	68 (-4)	Katy Wilkinson, LSU	1997

## Low First Round Scores

1.	67 (-5)	Lorena Ochoa, Arizona	2001
2.	68 (-4)	Young-A Yang, Tenn.	2001
3.	69 (-3)	Maria Martinez, Auburn	2005
	69 (-3)	Diana Ramage, Auburn	2002
	69 (-3)	Summer Sirmons, Georgia	2002
	69 (-3)	Robyn Rinaldo, Ole Miss	1998
	69 (-3)	Whitney Neuhauser, Va.	2008
8.	70 (-2)	Summer Sirmons, Ga.	2001
	70 (-2)	Marci Clemons, Auburn	1995
	70 (-2)	Suzanne Westling, TSU	1996
	70 (-2)	Tina Schneeberger, Tenn.	1999
	70 (-2)	Anna Nordqvist, Arizona St.	2008
	70 (-2)	Brooke Pancake, Ala.	2008
	70 (-2)	Jackie Hilea, Furman	2008

## 54-Hole Tournament Lows

1.	207 (-9)	Anna Nordqvist, Arizona St.	2008
2.	209 (-7)	Maria Martinez, Auburn	2005
3.	210 (-6)	Lorena Ochoa, Arizona	2001
3.	211 (-5)	Celeste Troche, Auburn	2002
	211 (-5)	Violeta Retamoza, Tenn.	2002
	211 (-5)	Azahara Munoz, Arizona St.	2008
	211 (-5)	Whitney Neuhauser, Va.	2008
7.	213 (-3)	Kathryn Cusick, Alabama	1997
	213 (-3)	Katy Wilkinson, LSU	1997
9.	214 (-2)	Reilley Rankin, Georgia	1997
	214 (-2)	Erica Blasberg, Arizona	2002

## 36-Hole Tournament Lows

1.	137 (-7)	Anna Nordqvist, Arizona St.	2008
2.	140 (-4)	Whitney Neuhauser, Va.	2008
3.	141 (-3)	Maria Martinez, Auburn	2005
4.	142 (-2)	Azahara Munoz, Arizona St.	2008
5.	143 (-1)	Robin Cook, Auburn	1998
	143 (-1)	Summer Sirmons, UGA	1998
	143 (-1)	Shauna Estes, UGA	1998
	143 (-1)	Angela Jerman, UGA	1998
	143 (-1)	Robyn Rinaldo, OM	1998
10.	144 (E)	Robin Cook, Auburn	1996
	144 (E)	Courtney Swaim, Auburn	1998
	144 (E)	Megan Breen, Ole Miss	1998
	144 (E)	Amy Bond, Florida St.	1998

## Low Second Round Scores

1.	67 (-5)	Kathryn Cusick, Alabama	1997
	67 (-5)	Anna Nordqvist, Arizona St.	2008
3.	68 (-4)	Courtney Swaim, Auburn	2001
	68 (-4)	Kami Smith, Auburn	1999
	68 (-4)	Katy Wilkinson, LSU	1997
	68 (-4)	Reilley Rankin, Georgia	1997
7.	69 (-3)	Reilley Rankin, Georgia	1997
	69 (-3)	Tatiano Londono, UCF	1998
	69 (-3)	Nicki Cutler, Vanderbilt	2000
10.	70 (-2)	Azahara Munoz, Arizona St.	2008
	70 (-2)	Dori Carter, Ole Miss	2008
	70 (-2)	Nicole Hage, Auburn	2006
	70 (-2)	Jenny Suh, Alabama	2005
	70 (-2)	Laura Henderson, UGA	1998
	70 (-2)	Rachael Short, Alabama	1998

## Low Third Round Scores

1.	67 (-5)	Celeste Troche, Auburn	2002
	67 (-5)	Violeta Retamoza, Tenn.	2002
	67 (-5)	Mary Jan Fernandez, Tenn.	2002
4.	68 (-4)	Maria Martinez, Auburn	2005
5.	69 (-3)	Azahara Munoz, Arizona St.	2008
	69 (-3)	Margaret Shirley, Auburn	2005
	69 (-3)	Marci Turner, Tennessee	2005
	69 (-3)	Katy Wilkinson, LSU	1997
9.	70 (-2)	Lorena Ochoa, Arizona	2001
	70 (-2)	Lina Thoren, Mississippi St.	2000
	70 (-2)	Caroline Landman, Tulane	2000



**1981 (4th) • Opelika, Ala.**

1. Florida ..... 875
2. Georgia ..... 882
3. LSU ..... 910
4. Auburn ..... 924
5. Kentucky ..... 935
6. Mississippi State ..... 990

*Auburn Individuals:*

- Linda Hogue ..... 225 (t-7th)  
 Sharon Thomas ..... 230 (t-16th)  
 Giana Piatt ..... 235 (t-20th)  
 Martha Monl ..... 236 (22nd)  
 Kim Evans ..... 239 (24th)

**1982 • Pine Mountain, Ga.**

1. Florida ..... 880
2. Georgia ..... 901
3. Mississippi State ..... 941
4. LSU ..... 946
5. Alabama ..... 951
6. Kentucky ..... 965

*Auburn Individuals:*

n/a

**1983 • Pine Mountain, Ga.**

1. Georgia ..... 890
2. Florida ..... 906
3. Kentucky ..... 915
4. Mississippi State ..... 944
5. LSU ..... 946

*Auburn Individuals:*

n/a

**1984 • Pine Mountain, Ga.**

1. Florida ..... 906
2. Georgia ..... 912
3. Mississippi State ..... 924
4. Kentucky ..... 932
5. LSU ..... 933
6. Alabama ..... 949

*Auburn Individuals:*

n/a

**1985 • Pine Mountain, Ga.**

1. Georgia ..... 900
2. Florida ..... 903
3. Mississippi State ..... 927
4. Kentucky ..... 932
5. Alabama ..... 934
6. LSU ..... 940

*Auburn Individuals:*

n/a

**1986 (6th) • Pine Mountain, Ga.**

1. Florida ..... 898
2. Kentucky ..... 928
3. Alabama ..... 930
4. Georgia ..... 936
5. LSU ..... 940
6. Auburn ..... 961
7. Mississippi State ..... 964

*Auburn Individuals:*

- Diane Rama ..... 235 (t-15th)  
 Margaret Platt ..... 238 (18th)  
 Virginia Derby ..... 239 (t-19th)  
 Meg Cimino ..... 249 (28th)  
 Johandra Culp ..... 259 (34th)

**1987 (4th) • Pine Mountain, Ga.**

1. Florida ..... 910
2. Georgia ..... 912
3. Alabama ..... 916
4. Auburn ..... 942
5. LSU ..... 943
6. Kentucky ..... 946
7. Mississippi State ..... 994
8. Ole Miss ..... 1140

*Auburn Individuals:*

- Margaret Platt ..... 222 (1st)  
 Diana Miles ..... 235?(t-17th)  
 Meg Cimino ..... 242 (22nd)  
 Anne Jones ..... 246 (t-27th)  
 Joal Rieder ..... 246 (t-27th)

**1988 (4th) • Gulf Breeze, Fla.**

1. Georgia ..... 864
2. Florida ..... 869
3. LSU ..... 890
4. Auburn ..... 892
5. Kentucky ..... 909
6. Alabama ..... 917
7. Mississippi State ..... 946
8. Ole Miss ..... 971
9. Vanderbilt ..... 996

*Auburn Individuals:*

- Joal Rieder ..... 222 (10th)  
 Anne Jones ..... 223 (t-11th)  
 Margaret Platt ..... 223 (t-11th)  
 Diana Miles ..... 224 (t-13th)  
 Meg Cimino ..... 235 (t-27th)

**1989 (SEC Champions) • Ponte Vedra, Fla.**

1. Auburn ..... 902
2. Florida ..... 910
3. Kentucky ..... 926
4. Georgia ..... 935
5. Alabama ..... 937
6. LSU ..... 949
7. Mississippi State ..... 961

8. Ole Miss ..... 1004
9. Vanderbilt ..... 1068

*Auburn Individuals:*

- Diane Rama ..... 223 (1st)  
 Margaret Platt ..... 228 (7th)  
 Joal Rieder ..... 229 (t-8th)  
 Diana Miles ..... 229 (t-8th)  
 Missy Tuck ..... 234 (t-16th)

**1990 (2nd) • Greensboro, Ga.**

1. Georgia ..... 607
2. Auburn ..... 613
3. LSU ..... 624
- Kentucky ..... 624
5. Florida ..... 625
6. Alabama ..... 644
7. Mississippi State ..... 663
8. Ole Miss ..... 671
9. Vanderbilt ..... 711

*Auburn Individuals:*

- Joal Rieder ..... 149 (3rd)  
 Diane Rama ..... 153 (8th)  
 Missy Tuck ..... 154 (9th)  
 Anne Jones ..... 157 (t-14th)  
 Rebeca Garcia ..... 160 (22nd)

**1991 (6th) • Lexington, Ky.**

1. Florida ..... 936
2. Alabama ..... 942
- Georgia ..... 942
4. Kentucky ..... 944
5. LSU ..... 951
6. Auburn ..... 952
7. Mississippi State ..... 966
8. Ole Miss ..... 995
9. Vanderbilt ..... 1004

*Auburn Individuals:*

- Missy Tuck ..... 235 (9th)  
 Stephanie Comstock ..... 238 (t-11th)  
 Janet Wooten ..... 247 (t-30th)  
 Barbara Paul ..... 247 (t-30th)

**1992 (8th) • Baton Rouge, La.**

1. LSU ..... 892
2. Georgia ..... 899
3. South Carolina ..... 912
4. Florida ..... 927
5. Alabama ..... 928
6. Kentucky ..... 934
7. Mississippi State ..... 937
8. Auburn ..... 943
9. Ole Miss ..... 948
10. Vanderbilt ..... 997

*Auburn Individuals:*

- Joal Rieder ..... 222 (10th)  
 Anne Jones ..... 223 (t-11th)

- Margaret Platt ..... 223 (t-11th)  
 Diana Miles ..... 224 (t-13th)  
 Meg Cimino ..... 235 (t-27th)

**1993 (7th) • Jackson, Miss.**

1. Georgia ..... 605
2. Tennessee ..... 611
3. South Carolina ..... 616
4. Florida ..... 618
5. Kentucky ..... 629
6. Mississippi State ..... 630
7. Auburn ..... 632
8. LSU ..... 634
9. Alabama ..... 638
10. Ole Miss ..... 650
11. Vanderbilt ..... 692

*Auburn Individuals:*

- Barbara Paul ..... 152 (9th)  
 Tracy Veto ..... 158 (t-21st)  
 Tricia Laxton ..... 163 (t-35th)  
 Rebeca Garcia ..... 164 (t-37th)  
 Amy Miller ..... 175 (t-52nd)

**1994 (3rd) • West Point, Miss.**

1. Georgia ..... 890
2. Alabama ..... 900
3. Auburn ..... 901
4. Tennessee ..... 902
5. South Carolina ..... 904
6. Florida ..... 920
7. Kentucky ..... 922
8. LSU ..... 938
9. Vanderbilt ..... 947
10. Ole Miss ..... 957
11. Mississippi State ..... 970

*Auburn Individuals:*

- Barbara Paul ..... 222 (6th)  
 Marci Clemens ..... 225 (t-12th)  
 Amy Miller ..... 227 (18th)  
 Tricia Laxton ..... 231 (t-22nd)  
 Tracy Veto ..... 233 (27th)

**1995 (t-6th) • Franklin, Tenn.**

1. Florida ..... 892
2. South Carolina ..... 921
3. Georgia ..... 938
- LSU ..... 938
5. Tennessee ..... 942
6. Auburn ..... 950
- Kentucky ..... 950
8. Ole Miss ..... 973
9. Mississippi State ..... 979
10. Vanderbilt ..... 987
11. Alabama ..... 1010

*Auburn Individuals:*

- Marci Clemons ..... 231 (t-10th)  
 Tracy Veto ..... 235 (t-15th)



**AUBURN IN THE SEC CHAMPIONSHIP**

Katie Gallina ..... 241 (t-27th)  
 Amy Miller-Davis ..... 244 (t-32nd)  
 Erinn Gunstra ..... 258 (t-48th)

**1996 (SEC Champions) • Knoxville, Tenn.**

1. Auburn ..... 604  
 2. LSU ..... 608  
 3. South Carolina ..... 610  
     Florida ..... 610  
 5. Tennessee ..... 618  
 6. Georgia ..... 628  
 7. Kentucky ..... 632  
 8. Ole Miss ..... 635  
 9. Vanderbilt ..... 639  
 10. Alabama ..... 641  
 11. Mississippi State ..... 648  
 12. Arkansas ..... 663

*Auburn Individuals:*

Marci Clemons ..... 144 (1st)  
 Katie Gallina ..... 152 (7th)  
 Robin Cook ..... 153 (t-8th)  
 Marty Goldthorp ..... 155 (t-17th)  
 Tracy Veto ..... 164 (t-45th)

**1997 (5th) • Blythewood, S.C.**

1. Georgia ..... 899  
 2. LSU ..... 905  
 3. Florida ..... 908  
 4. South Carolina ..... 910  
 5. Auburn ..... 911  
 6. Tennessee ..... 916  
 7. Alabama ..... 929  
 8. Kentucky ..... 930  
 9. Vanderbilt ..... 943  
 10. Ole Miss ..... 952  
 11. Mississippi State ..... 964  
 12. Arkansas ..... 977

*Auburn Individuals:*

Robin Cook ..... 224 (t-4th)  
 Katie Gallina ..... 228 (t-14th)  
 Marci Clemons ..... 231 (t-19th)  
 Marty Goldthorp ..... 232 (t-25th)  
 Kami Smith ..... 240 (t-42nd)

**1998 (5th) • Birmingham, Ala.**

1. Georgia ..... 894  
 2. LSU ..... 899  
 3. Alabama ..... 902  
 4. Tennessee ..... 919  
 5. Auburn ..... 925  
 6. Ole Miss ..... 926  
 7. Mississippi State ..... 932  
 8. South Carolina ..... 933  
 9. Florida ..... 934  
 10. Arkansas ..... 947  
 11. Kentucky ..... 960

12. Vanderbilt ..... 969  
*Auburn Individuals:*  
 Robin Cook ..... 223 (5th)  
 Katie Gallina ..... 225 (t-7th)  
 Kami Smith ..... 236 (t-30th)  
 Marty Goldthorp ..... 242 (46th)  
 Audrey Fisher ..... 250 (t-54th)

**1999 (6th) • Auburn, Ala.**

1. Georgia ..... 887  
 2. Tennessee ..... 905  
 3. Ole Miss ..... 913  
 4. LSU ..... 918  
 5. Arkansas ..... 931  
 6. Auburn ..... 937  
 7. Mississippi State ..... 949  
     Vanderbilt ..... 949  
 9. Alabama ..... 951  
 10. South Carolina ..... 952  
 11. Florida ..... 970  
 12. Kentucky ..... 978

*Auburn Individuals:*

Courtney Swaim ..... 230 (t-9th)  
 Robin Cook ..... 233 (t-21st)  
 Kami Smith ..... 237 (t-27th)  
 Marty Goldthorp ..... 245 (t-43rd)  
 Kim Strong ..... 251 (t-53rd)

**2000 (SEC Champions) • Rogers, Ark.**

1. Auburn ..... 919  
 2. LSU ..... 921  
 3. Tennessee ..... 925  
 4. Georgia ..... 932  
 5. Florida ..... 938  
     Mississippi State ..... 938  
 7. Kentucky ..... 950  
 8. Arkansas ..... 956  
 9. South Carolina ..... 959  
 10. Vanderbilt ..... 966  
 11. Ole Miss ..... 968  
 12. Alabama ..... 976

*Auburn Individuals:*

Danielle Downey ..... 224 (1st)  
 Celeste Troche ..... 226 (t-2nd)  
 Kami Smith ..... 234 (t-17th)  
 Kimberly Strong ..... 236 (t-23rd)  
 Courtney Swaim ..... 240 (t-31st)

**2001 (t-3rd) • Gainesville, Fla.**

1. Georgia ..... 872  
 2. LSU ..... 877  
 3. Auburn ..... 887  
     South Carolina ..... 887  
 5. Florida ..... 891  
 6. Tennessee ..... 897  
 7. Alabama ..... 905

8. Vanderbilt ..... 908  
 9. Ole Miss ..... 937  
 10. Kentucky ..... 940  
 11. Mississippi State ..... 941  
 12. Arkansas ..... 943

*Auburn Individuals:*

Celeste Troche ..... 215 (5th)  
 Courtney Swaim ..... 221 (t-12th)  
 Danielle Downey ..... 224 (t-16th)  
 Diana Ramage ..... 231 (t-32nd)  
 Anne Hutto ..... 231 (t-32nd)

**2002 (2nd) • Athens, Ga.**

1. South Carolina ..... 861  
 2. Auburn ..... 864  
 3. Tennessee ..... 866  
 4. Vanderbilt ..... 875  
 5. Georgia ..... 888  
 6. Florida ..... 897  
 7. Alabama ..... 918  
 8. LSU ..... 921  
 9. Mississippi State ..... 929  
     Ole Miss ..... 929  
 11. Arkansas ..... 934  
 12. Kentucky ..... 944

*Auburn Individuals:*

Celeste Troche ..... 212 (t-3rd)  
 Danielle Downey ..... 217 (8th)  
 Courtney Swaim ..... 219 (t-10th)  
 Diana Ramage ..... 219 (t-10th)  
 Kingsley Barrett ..... 229 (t-30th)

**2003 (SEC Champions) • Lexington, Ky.**

1. Auburn ..... 903  
 2. Florida ..... 905  
 3. Tennessee ..... 911  
 4. South Carolina ..... 914  
 5. Vanderbilt ..... 919  
 6. Arkansas ..... 925  
 7. Georgia ..... 937  
 8. Kentucky ..... 944  
 9. Mississippi State ..... 960  
 10. LSU ..... 975  
 11. Ole Miss ..... 982  
 12. Alabama ..... 983

*Auburn Individuals:*

Danielle Downey ..... 223 (t-5th)  
 Maria Martinez ..... 224 (t-8th)  
 Celeste Troche ..... 225 (t-10th)  
 Diana Ramage ..... 234 (t-22nd)  
 Kingsley Barrett ..... 236 (t-27th)

**2004 (t-2nd) • Baton Rouge, La.**

1. Vanderbilt ..... 877  
 2. Auburn ..... 881  
     LSU ..... 881  
 4. Tennessee ..... 882  
 5. Florida ..... 885  
 6. Georgia ..... 890  
 7. South Carolina ..... 899  
 8. Ole Miss ..... 905  
 9. Arkansas ..... 909  
 10. Alabama ..... 913  
 11. Mississippi State ..... 923  
 12. Kentucky ..... 928

*Auburn Individuals:*

Maria Martinez ..... 218 (t-4th)  
 Nicole Hage ..... 221 (t-11th)  
 Leah Hart ..... 221 (t-11th)  
 Kingsley Barrett ..... 224 (t-20th)  
 Jennifer Head ..... 226 (30th)

**2005 (SEC Champions) • Tunica, Miss.**

1. Auburn ..... 904\*  
     Georgia ..... 904  
 3. Arkansas ..... 905  
 4. LSU ..... 906  
     Tennessee ..... 906  
 6. Florida ..... 911  
 7. South Carolina ..... 914  
 8. Kentucky ..... 923  
 9. Vanderbilt ..... 927  
 10. Alabama ..... 933  
 11. Mississippi St. .... 947  
 12. Ole Miss ..... 969..\*

\* Auburn won in a three-hole playoff

*Auburn Individuals:*

Maria Martinez ..... 226 (t-7th)  
 Nicole Hage ..... 226 (t-7th)  
 Diana Ramage ..... 228 (t-15th)  
 Margaret Shirley ..... 228 (t-15th)  
 Jessica Lovell ..... 233 (t-30th)

**2006 (SEC Champions) • Nashville, Tenn.**

1. Auburn ..... 875  
 2. Tennessee ..... 876  
 3. Georgia ..... 885  
 4. Vanderbilt ..... 887  
 5. Arkansas ..... 897  
 6. Florida ..... 898  
 7. LSU ..... 900  
 8. South Carolina ..... 903  
 9. Alabama ..... 908  
 10. Mississippi State ..... 924  
 11. Kentucky ..... 936  
 12. Mississippi ..... 940



INDIVIDUAL  
SEC CHAMPIONS

*Auburn Individuals:*

Maria Martinez.....	211 (1st)
Margaret Shirley .....	217 (3rd)
Jessica Lovell.....	223 (t-16th)
Abigale Schepperle ...	228 (t-30th)
Nicole Hage .....	229 (34th)

**2007 (8th) • West Point, Miss.**

1. Georgia.....	865
2. Florida.....	881
3. Tennessee .....	886
4. South Carolina .....	887
5. Alabama .....	893
6. Vanderbilt .....	898
7. LSU .....	899
8. Auburn.....	902
9. Arkansas .....	906
10. Mississippi State .....	914
11. Kentucky .....	931
12. Ole Miss .....	946

*Auburn Individuals:*

Nicole Hage .....	224 (t-21st)
Marisa Milligan.....	227 (t-25th)
Candace Schepperle ...	227 (t-25th)
Margaret Shirley .....	228 (t-30th)
Abigal Schepperle.....	233 (42nd)

**2008 (4th) • Loudon, Tenn.**

1. Florida.....	874
2. Arkansas .....	891
3. Georgia.....	903
4. Auburn.....	910
5. South Carolina .....	915
6. LSU .....	920
7. Alabama .....	921
8. Tennessee .....	931
9. Vanderbilt .....	935
10. Ole Miss .....	939
11. Mississippi State .....	952
12. Kentucky .....	953

*Auburn Individuals:*

Margaret Shirley .....	219 (t-4th)
Candace Schepperle.....	221 (t-7th)
Cydney Clanton .....	234 (29th)
Mariana Macias.....	238 (t-40th)
Abigal Schepperle.....	240 (44th)

**2009 (1st) • Blythewood, S.C.**

1. Auburn.....	870
2. Arkansas.....	878
Alabama .....	878
4. Tennessee .....	881
5. LSU.....	886
6. Georgia.....	887
7. Ole Miss.....	890
8. Florida.....	895
9. South Carolina .....	897
10. Vanderbilt.....	915
11. Kentucky.....	918
12. Mississippi State .....	930

*Auburn Individuals:*

Cydney Clanton .....	216 (t-4th)
Patricia Sanz.....	217 (t-6th)
Candace Schepperle ...	218 (t-10th)
Haley Wilson.....	219 (12th)
Mariana Macias.....	240 (t-54th)

**2010 (5th) • Tuscaloosa, Ala.**

1. Alabama .....	848
2. Vanderbilt.....	852
3. Arkansas.....	859
4. Georgia.....	860
5. Auburn.....	861
6. LSU.....	866
7. South Carolina .....	867
8. Ole Miss.....	876
9. Tennessee .....	877
10. Florida.....	889
11. Kentucky .....	906
12. Mississippi State .....	925

*Auburn Individuals:*

Cydney Clanton .....	212 (t-7th)
Haley Wilson.....	212 (t-7th)
Candace Schepperle ...	216 (t-17th)
Patricia Sanz.....	225 (41st)
Carlie Yadloczky .....	230 (50th)

**2011 (1st) • Auburn, Ala.**

1. Auburn.....	864
2. Alabama .....	875
3. LSU.....	887
4. Arkansas.....	892
5. South Carolina .....	893
6. Tennessee .....	895
7. Vanderbilt.....	897
8. Georgia.....	899
9. Florida.....	907
10. Kentucky.....	927
11. Ole Miss .....	931
12. Mississippi State .....	955

*Auburn Individuals:*

Cydney Clanton .....	214 (3rd)
Haley Wilson.....	222 (11th)
Marta Sanz .....	222 (t-14th)
Patricia Sanz.....	222 (t-14th)
Carlie Yadloczky .....	225 (t-19th)



Margaret Platt  
1987



Diane Rama  
1989



Marci Clemons  
1996



Danielle Downey  
2000



Maria Martinez  
2006

SEC CHAMPIONSHIP  
RECORDS

TEAM RECORDS

BEST FINISH

1. 1st.....	2011
1st.....	2009
1st.....	2006
1st.....	2005
1st.....	2003
1st.....	2000
1st.....	1996
1st.....	1989
9. 2nd.....	2004
2nd.....	2002
2nd.....	1990

LOW FINAL SCORE

1. 861 strokes .....	2010
2. 864 strokes .....	2002, 2011
3. 870 strokes .....	2009
4. 875 Strokes.....	2006
5. 887 strokes .....	2001

LOW ROUND

1. 280 strokes (1st round) .....	2002
2. 282 strokes (2nd round).....	2006
3. 283 strokes (1st round).....	2011
4. 284 strokes (3rd round).....	2010
5. 285 strokes (3rd round).....	2009
6. 288 strokes (2nd round).....	2010

INDIVIDUAL RECORDS

BEST FINISH

1. Maria Martinez (Champion).....	2006
Danielle Downey (Champion)....	2000
Marci Clemons (Champion).....	1996
Diane Rama (Champion).....	1989
Margaret Platt (Champion) .....	1987
6. Celeste Troche (t-2nd).....	2000

LOW FINAL SCORE

1. Maria Martinez (211).....	2006
2. Cydney Clanton (212).....	2010
Haley Wilson (212).....	2010
Celeste Troche (212).....	2002
5. Cydney Clanton (214).....	2011
6. Celeste Troche (215).....	2001

LOW ROUND

1. Patricia Sanz (67, 2nd rd.).....	2011
2. Cydney Clanton (69, 1st rd.).....	2011
Patricia Sanz (69, 2nd rd.).....	2009
Margaret Shirley (69, 2nd .....	rd.) 2006
Nicole Hage (69, 1st rd.).....	2005
Danielle Downey (69, 1st rd.).....	2002
Marci Clemons (69, 1st rd.).....	1996
8. Cydney Clanton (70, 2nd rd.) .....	2010
Cydney Clanton (70, 3rd rd.) .....	2010
Haley Wilson (70, 3rd rd.) .....	2010
Margaret Shirley (70, 3rd rd.) .....	2008
Maria Martinez (70, 3rd rd.) .....	2006
Celeste Troche (70, 1st rd.) .....	2001
Celeste Troche (70, 1st rd.) .....	2002
Diana Ramage (70, 1st rd.) .....	2002



# SEC TEAM CHAMPIONS



**1989 SEC Champions**  
(L to R): Head Coach Bud Marsee, Margaret Platt, Joal Rieder, Diane Rama, Missy Tuck, Diana Miles.



**1996 SEC Champions**  
(L to R): Marty Goldthorp, Tracy Veto, Katie Gallina, Head Coach Kim Evans, Robin Cook, Marci Clemons.



**2000 SEC Champions**  
(L to R): Assistant Coach Shannon Hanson, Danielle Downey, Kami Smith, Celeste Troche, Kimberly Strong, Courtney Swaim, Head Coach Kim Evans



**2003 SEC Champions**  
(L to R): Head Coach Kim Evans, Celeste Troche, Kingsley Barrett, Danielle Downey, Diana Ramage, Assistant Coach Erin O'Neil (holding trophy): Maria Martinez



**2005 SEC Champions**  
(L to R): Head Coach Kim Evans, Nicole Hage, Diana Ramage, Maria Martinez, Margaret Shirley, Jessica Lovell, Assistant Coach Joy Stephenson.



**2006 SEC Champions**  
(L to R): Head Coach Kim Evans, Nicole Hage, Margaret Shirley, Maria Martinez, Abigale Schepperle, Jessica Lovell, Assistant Coach Courtney Trimble



**2009 SEC Champions**  
(L to R): Head Coach Kim Evans, Cydney Clanton, Candace Schepperle, Patricia Sanz, Haley Wilson, Mariana Macias, Assistant Coach Courtney Trimble



**2011 SEC Champions**  
(L to R): Marta Sanz, Patricia Sanz, Karlin Beck, Head Coach Kim Evans, Assistant Coach Ryan Cabbage, Haley Wilson, Cydney Clanton, Madison Overby, Diana Fernandez and Carlie Yadloczky.





The 1992-93 Tigers advanced to the school's first NCAA East Regional.

**1993 (t-12th) • Baton Rouge, La.**  
**Santa Maria Country Club • Host: LSU**

Auburn .....	316-315-312--943
Barbara Paul .....	75-77-75--227 (20th)
Tricia Laxton .....	75-78-78--231 (t-32nd)
Rebeca Garcia .....	85-79-79--243 (t-79th)
Amy Miller .....	85-81-80--246 (t-86th)
Tracy Veto .....	81-81-85--247 (t-88th)

**1994 (9th) • East Lansing, Mich.**  
**Forest Akers West Golf Course**  
**Host: Michigan State**

Auburn .....	331-311-315--957
Barbara Paul .....	81-79-75--235 (t-19th)
Marci Clemons .....	81-80-78--239 (t-38th)
Tracy Veto .....	83-74-86--243 (t-49th)
Tricia Laxton .....	86-82-79--247 (t-70th)
Amy Miller .....	86-78-83--247 (t-70th)

**1996 (t-5th) • Auburn, Ala.**  
**Grand National Lake Course • Host: Auburn**

Auburn .....	300-309-310--919
Robin Cook .....	77-76-73--226 (t-12th)
Katie Gallina .....	72-73-82--227 (t-16th)
Marci Clemons .....	74-81-78--233 (t-32nd)
Tracy Veto .....	77-79-85--241 (t-62nd)
Marty Goldthorp .....	80-89-77--246 (82nd)



The 1995-96 Tigers advanced to Auburn's first NCAA Championship appearance in six years. AU hosted the event at Grand National in Auburn, Ala.

**1997 (t-3rd) • Normal, Ill.**  
**Prairie Vista Golf Course**  
**Host: Illinois State**

Auburn .....	316-323-306-945
Katie Gallina .....	73-81-73--227 (t-2nd)
Marci Clemons .....	74-77-78--229 (t-5th)
Robin Cook .....	83-78-77--238 (t-25th)
Marty Goldthorp .....	86-87-78--251 (t-89th)
Kami Smith .....	88-92-78--258 (t-99th)

**1998 (t-7th) • Durham, N.C.**  
**Duke Golf Club • Host: Duke**

Auburn .....	309-299-308--916
Kami Smith .....	76-73-74--223 (t-8th)
Katie Gallina .....	75-73-76--224 (t-12th)
Robin Cook .....	75-76-78--229 (t-30th)
Marty Goldthorp .....	83-77-80--240 (t-77th)
Audrey Fisher .....	85-80-85--250 (t-98th)

**1999 (8th) • Blythewood, S.C.**  
**University Golf Course**  
**Host: South Carolina**

Auburn .....	306-298-308--912
Courtney Swaim .....	74-73-77--224 (t-17th)
Robin Cook .....	74-76-75--225 (t-23rd)
Kami Smith .....	77-73-80--230 (t-47th)
Marty Goldthorp .....	81-76-76--233 (t-60th)
Kim Strong .....	83-87-80--250 (t-99th)

**2000 (t-7th) • Columbus, Ohio**  
**OSU Scarlet Course • Host: Ohio State**

Auburn .....	301-298-308--907
Celeste Troche .....	71-69-77--217 (3rd)
Danielle Downey .....	75-74-77--226 (t-21st)
Courtney Swaim .....	75-78-76--229 (t-34th)
Kami Smith .....	80-86-78--244 (t-107th)
Kimberly Strong .....	86-77-83--246 (t-113th)



Auburn at the 2000 East Regional at The Scarlet Course in Columbus, Ohio.

**2001 (2nd) • Chapel Hill, N.C.**  
**Finley Golf Course • Host: North Carolina**

Auburn .....	294-290-295--879
Diana Ramage .....	76-71-71--218 (t-5th)

Celeste Troche .....	75-73-74--222 (t-10th)
Danielle Downey .....	72-77-75--224 (t-15th)
Kimberly Strong .....	72-72-80--224 (t-15th)
Courtney Swaim .....	75-74-75--224 (t-15th)

**2002 (2nd) • Baton Rouge, La.**  
**The University Club • Host: LSU**

Auburn .....	287-293-292--872
Celeste Troche .....	69-70-72--211 (2nd)
Courtney Swaim .....	70-72-71--213 (t-3rd)
Diana Ramage .....	74-78-73--225 (t-45th)
Danielle Downey .....	74-76-76--226 (t-54th)
Kingsley Barrett .....	79-75-77--231 (t-70th)

**2003 (4th) • Clemmons, N.C.**  
**Salem Glen Country Club**  
**Host: Wake Forest**

Auburn .....	298-291-278--867
Celeste Troche .....	70-71-73--214 (t-8th)
Diana Ramage .....	75-75-68--218 (t-16th)
Anne Hutto .....	76-73-71--220 (t-22nd)
Maria Martinez .....	77-77-66--220 (t-22nd)
Kingsley Barrett .....	77-72-75--224 (t-36th)

**2004 (11th) • Howey-in-the-Hills, Fla.**  
**El Campeon Course • Host: Stetson**

Auburn .....	302-312-315--929
Nicole Hage .....	76-77-76--229 (t-29th)
Kingsley Barrett .....	74-79-79--232 (41st)
Maria Martinez .....	79-76-79--234 (46th)
Leah Hart .....	73-84-82--239 (t-61st)
Jennifer Head .....	80-80-81--241 (t-69th)

**2005 (1st) • Lubbock, Texas**  
**Texas Tech Course • Host: Texas Tech**

Auburn .....	294-309-293--896
Diana Ramage .....	68-77-67--212 (1st)
Nicole Hage .....	74-75-75--224 (t-6th)
Margaret Shirley .....	74-79-76--229 (t-31st)
Maria Martinez .....	78-78-75--231 (t-42nd)
Jessica Lovell .....	78-85-80--243 (t-94th)



The 2004-05 Tigers won the NCAA Central Regional at the Texas Tech Course in Lubbock, Texas.

## AUBURN IN THE NCAA REGIONAL

### 2006 (6th) • Browns Summit, N.C.

**Bryan Park Golf Course • Host: Wake Forest**

Auburn .....	293-301-285--879
Jessica Lovell .....	73-74-71--218 (t-15th)
Maria Martinez .....	72-74-73--219 (t-18th)
Abigale Schepperle .....	72-78-73--223 (t-35th)
Nicole Hage .....	78-78-68--224 (43rd)
Margaret Shirley .....	76-75-75--226 (t-54th)

### 2007 (4th) • Baton Rouge, La.

**University Club • Host: LSU**

Auburn .....	293-282-286--861
Nicole Hage .....	68-70-69--207 (4th)
Margaret Shirley .....	75-70-73--218 (t-36th)
Abigale Schepperle .....	76-41-72--219 (t044th)
Candace Schepperle .....	75-73-72--220 (t048th)
Marisa Milligan .....	75-71-78--224 (t-62nd)

### 2008 (4th) • Athens, Ga.

**University of Georgia Golf Course**

**Host: Georgia**

Auburn .....	296-302-296--894
Cydney Clanton .....	70-75-72--217 (t-4th)
Candace Schepperle .....	74-76-71--221 (14th)
Margaret Shirley .....	75-78-75--228 (t-36th)
Mariana Macias .....	77-76-78--231 (t-55th)
Sarah Thead .....	77-75-79--231 (t-55th)

### 2009 (10th) • Gainesville, Fla.

**Mark Bostick Golf Course • Host: Florida**

Auburn .....	304-294-295--893
Candace Schepperle .....	71-70-75--216 (t-8th)
Haley Wilson .....	79-73-68--220 (t-23rd)
Patricia Sanz .....	76-73-75--224 (t-46th)
Cydney Clanton .....	78-78-77--233 (t-80th)
Sarah Thead .....	79-80-79--238 (t-90th)

### 2010 (t-3rd) • Greenville, N.C.

**Ironwood Country Club • Host: East Carolina**

Auburn .....	280-295-293--868
Carlie Yadloczky .....	68-73-70--211 (2nd)
Candace Schepperle .....	71-72-75--218 (t-19th)
Cydney Clanton .....	71-76-74--221 (t-36th)
Patricia Sanz .....	75-74-74--223 (t-47th)
Haley Wilson .....	70-77-77--224 (t-54th)

### 2011 (13th) • Daytona Beach, Fla.

**LPGA International Legends Course • Host:**

**Stetson**

Auburn .....	302-299-302--903
Cydney Clanton .....	77-73-72--222 (t-31st)
Marta Sanz .....	73-78-76--227 (t-52nd)
Haley Wilson .....	75-74-78--227 (t-52nd)

Patricia Sanz .....	77-76-77--230 (t-69th)
Carlie Yadloczky .....	78-76-77--231 (t-78th)

## NCAA REGIONAL CHAMPIONSHIP RECORDS

### TEAM RECORDS

#### BEST FINISH

1.	1st .....	2005
2.	2nd .....	2001
	2nd .....	2002
4.	T-3rd .....	2010
	t-3rd .....	1997

#### LOW FINAL SCORE

1.	861 strokes .....	2007
2.	867 strokes .....	2003
3.	868 strokes .....	2010
4.	872 strokes .....	2002
5.	879 strokes .....	2001
	879 strokes .....	2006

#### LOW ROUND

1.	278 strokes (3rd rd.) .....	2003
2.	280 strokes (1st rd.) .....	2010
3.	282 strokes (2nd rd.) .....	2007
4.	285 strokes (3rd rd.) .....	2006
5.	286 strokes (3rd rd.) .....	2007
6.	287 strokes (1st rd.) .....	2002
7.	290 strokes (2nd rd.) .....	2001
8.	291 strokes (2nd rd.) .....	2003
9.	292 strokes (3rd rd.) .....	2002
10.	293 strokes (3rd rd.) .....	2010
	293 strokes (2nd rd.) .....	2002
	293 strokes (1st rd.) .....	2006
	293 strokes (1st rd.) .....	2007

### INDIVIDUAL RECORDS

#### BEST FINISH

1.	Diana Ramage (1st) .....	2005
2.	Carlie Yadloczky (2nd) .....	2010
	Celeste Troche (2nd) .....	2002
	Katie Gallina (t-2nd) .....	1997
5.	Celeste Troche (3rd) .....	2000
	Courtney Swaim (t-3rd) .....	2002

#### LOW FINAL SCORE

1.	Nicole Hage (207) .....	2007
2.	Carlie Yadloczky (211) .....	2010
	Celeste Troche (211) .....	2002
4.	Courtney Swaim (213) .....	2002
5.	Celeste Troche (214) .....	2003

#### LOW ROUND

1.	Maria Martinez (66, 3rd rd.) .....	2003
2.	Carlie Yadloczky (68, 1st rd.) .....	2010
	Haley Wilson (68, 3rd rd.) .....	2009
	Diana Ramage (68, 2nd rd.) .....	2003
	Nicole Hage (68, 3rd rd.) .....	2006





**1989 (13TH)**  
**STANFORD GOLF COURSE**  
**PALO ALTO, CALIF.**  
**HOST: STANFORD**

Auburn ..... 315-310-309-317--1251  
 Margaret Platt..... 76-71-75-77--299 (8th)  
 Diane Rama..... 77-77-75-83--312(t-37th)  
 Diana Miles..... 84-81-78-82--325 (t-82nd)  
 Sallie Ransom ..... 81-84-81-79--325 (t-82nd)  
 Missy Tuck..... 81-81-86-79--327 (t-89th)



**1990 (8TH)**  
**ARTHUR HILLS COURSE AT PALMETTO DUNES**  
**HILTON HEAD, S.C.**  
**HOST: SOUTH CAROLINA**

Auburn ..... 306-307-318-298--1229  
 Missy Tuck..... 77-72-76-75--300 (t-8th)  
 Joal Rieder ..... 74-79-82-73--308 (t-25th)  
 Diane Rama..... 76-77-81-77--311 (t-35th)  
 Anne Jones..... 79-82-82-75--318 (t-61st)  
 Rebeca Garcia ..... 82-79-79-WD



**1996 (18TH)**  
**LA QUINTA COUNTRY CLUB (DUNES COURSE)**  
**LA QUINTA, CALIF.**  
**HOST: UCLA**

Auburn ..... 327-330-332-320--1309  
 Marci Clemons..... 77-78-82-74--311(t-16th)  
 Robin Cook ..... 82-81-83-81--327 (t-61st)  
 Katie Gallina ..... 78-87-84-81--330 (76th)  
 Marty Goldthorp ..... 90-84-83-84--341(t-90th)  
 Tracy Veto ..... 90-89-97-91--367 (96th)



**1997 (13TH)**  
**THE SCARLET COURSE**  
**COLUMBUS, OHIO**  
**HOST: OHIO STATE**

Auburn ..... 303-319-296-303--1221  
 Marci Clemons..... 76-80-69-76--301 (t-31st)  
 Robin Cook ..... 76-78-75-77--306(t-49th)  
 Katie Gallina ..... 77-82-76-74--309 (t-61st)  
 Marty Goldthorp ..... 81-83-76-76--316(t-79th)  
 Kami Smith ..... 74-79-80-87--320 (t-88th)



**1998 (19TH)**  
**UNIVERSITY RIDGE GOLF COURSE**  
**MADISON, WIS.**  
**HOST: WISCONSIN**

Auburn ..... 295-314-309-313--1231  
 Robin Cook ..... 80-73-72-74--299 (t-27th)  
 Marty Goldthorp ..... 74-79-75-78--306 (t-55th)  
 Katie Gallina ..... 72-84-79-79--314 (t-82nd)  
 Audrey Fisher..... 72-80-83-82--317 (t-89th)  
 Kami Smith ..... 77-82-85-82--326 (97th)



**1999 (T-15TH)**  
**TULSA COUNTRY CLUB**  
**TULSA, OKLA.**  
**HOST: TULSA**

Auburn ..... 318-312-314--944  
 Robin Cook ..... 78-76-73--227 (t-15th)  
 Courtney Swaim..... 75-76-78--229 (t-24th)  
 Kami Smith ..... 84-77-80--241 (74th)  
 Marty Goldthorp ..... 81-86-83--250 (t-95th)  
 Audrey Fisher..... 84-83-87--254 (t-97th)



**2000 (6TH)**  
**CROSSWATER CLUB**  
**SUNRIVER, ORE.**  
**HOST: OREGON STATE**

Auburn ..... 302-302-300-306--1210  
 Danielle Downey ..... 71-74-72-77--294 (4th)  
 Celeste Troche..... 77-77-73-74--301(t-25th)  
 Courtney Swaim..... 73-76-77-78--304 (t-41st)  
 Kimberly Strong..... 81-75-78-77--311(t-77th)  
 Kami Smith ..... 81-77-81-82--321(t-107th)



**2001 (4TH)**  
**MISSION INN GOLF AND TENNIS RESORT**  
**HOWEY-IN-THE-HILLS, FLA.**  
**HOST: STETSON**

Auburn ..... 300-294-294-305--1193  
 Celeste Troche..... 72-68-74-77--291 (9th)  
 Courtney Swaim..... 73-74-76-77--300(t-30th)  
 Danielle Downey ..... 76-78-75-73--302(t-39th)  
 Diana Ramage..... 82-74-69-80--305(t-55th)  
 Kimberly Strong..... 79-78-85-78--320(t-106th)



**2002 (T-2ND)**  
**WASHINGTON NATIONAL GOLF CLUB**  
**AUBURN, WASH.**  
**HOST: WASHINGTON**

Auburn ..... 298-300-285-287--1170  
 Danielle Downey ..... 73-69-70-72--284 (t-2nd)  
 Celeste Troche..... 72-75-71-71--289 (t-10th)  
 Diana Ramage..... 76-78-71-73--298 (t-45th)  
 Courtney Swaim..... 77-78-75-71--301 (t-60th)  
 Kingsley Barrett..... 84-79-73-75--311 (106th)





**2003 (9TH)**  
**KAMPEN COURSE**  
**WEST LAFAYETTE, IND.**  
**HOST: PURDUE**

Auburn .....	317-303-300-304--1224
Danielle Downey .....	76-73-77-74--300 (t-6th)
Diana Ramage .....	81-72-74-74--301 (t-11th)
Celeste Troche .....	76-81-71-75--303 (t-19th)
Maria Martinez .....	84-77-81-81--323 (101st)
Kingsley Barrett .....	87-85-78-83--333 (120th)



**2005 (3RD)**  
**SUNRIVER COURSE**  
**BEND, ORE.**  
**HOST: OREGON**

Auburn .....	290-296-295-295--1176
Nicole Hage .....	73-75-70-71--289 (5th)
Diana Ramage .....	73-71-76-73--293 (t-12th)
Maria Martinez .....	72-73-77-74--296 (t-16th)
Abigale Schepperle .....	72-77-74-81--304 (t-68th)
Margaret Shirley .....	79-79-75-77--310 (t-98th)



**2006 (12TH)**  
**OHIO STATE SCARLET COURSE**  
**COLUMBUS, OHIO**  
**HOST: OHIO STATE**

Auburn .....	301-298-305-304--1208
Abigal Schepperle .....	74-71-77-75--297 (t-21st)
Maria Martinez .....	73-76-75-77--301 (t-38th)
Margaret Shirley .....	77-73-78-79--307 (t-68th)
Nicole Hage .....	77-82-75-75--309 (t-79th)
Jessica Lovell .....	80-78-80-77--315 (t-98th)



**2007 (9TH)**  
**LPGA INTERNATIONAL**  
**DAYTONA BEACH, FLA.**  
**HOST: UNIVERSITY OF CENTRAL FLORIDA**

Auburn .....	309-304-300-300--1213
Candace Schepperle .....	79-72-74-73--298 (t-14th)
Nicole Hage .....	78-77-77-71--303 (t-34th)
Margaret Shirley .....	77-76-72-78--303 (t-34th)
Marisa Milligan .....	75-79-77-78--309 (t-65th)
Abigale Schepperle .....	82-80-77-78--317 (t-95th)



**2008 (T-12TH)**  
**NEW MEXICO CHAMPIONSHIP GOLF CLUB**  
**ALBUQUERQUE, N.M.**  
**HOST: NEW MEXICO**

Auburn .....	289-315-309-302--1215
Cydney Clanton .....	74-75-77-71--297 (t-23rd)
Margaret Shirley .....	71-80-78-76--305 (t-63rd)
Candace Schepperle .....	69-82-79-78--308 (t-75th)
Sarah Thead .....	75-78-75-80--308 (t-75th)
Mariana Macias .....	76-82-80-77--315 (t-96th)



**2010 (T-11TH)**  
**COUNTRY CLUB OF LANDFALL**  
**WILMINGTON, N.C.**  
**HOST: NORTH CAROLINA-WILMINGTON**

Auburn .....	293-296-295-299--1183
Cydney Clanton .....	72-71-72-66--281 (t-3rd)
Candace Schepperle .....	73-71-74-78--296 (t-43rd)
Haley Wilson .....	73-77-74-78--302 (t-76th)
Patricia Sanz .....	75-77-75-77--304 (t-86th)
Charlie Yadloczky .....	77-76-81-80--317 (120th)

## NCAA CHAMPIONSHIP RECORDS

### TEAM RECORDS

#### BEST FINISH

1. t-2nd .....	2002
2. 3rd .....	2005
3. 4th .....	2001
4. 6th .....	2000
5. 8th .....	1990

#### LOW FINAL SCORE (72 HOLES)

1. 1,170 strokes .....	2002
2. 1,183 strokes .....	2010
3. 1,193 strokes .....	2001
4. 1,208 strokes .....	2006
5. 1,210 strokes .....	2000

#### LOW FINAL SCORE (54 HOLES)

1. 944 strokes .....	1999
----------------------	------

#### LOW ROUND

1. 285 strokes (3rd round) .....	2002
2. 287 strokes (4th round) .....	2002
3. 289 strokes (1st round) .....	2008
4. 293 strokes (1st round) .....	2010
5. 294 strokes (2nd round) .....	2001
294 strokes (3rd round) .....	2001

## INDIVIDUAL RECORDS

#### BEST FINISH

1. Danielle Downey (t-2nd) .....	2002
2. Cydney Clanton (t-3rd) .....	2010
3. Danielle Downey (4th) .....	2000
4. Danielle Downey (t-6th) .....	2003
5. Margaret Platt (8th) .....	1989
Missy Tuck (t-8th) .....	1990
7. Celeste Troche (9th) .....	2001
8. Celeste Troche (t-10th) .....	2002

#### LOW FINAL SCORE (72 HOLES)

1. Cydney Clanton (281) .....	2010
2. Danielle Downey (284) .....	2002
3. Celeste Troche (289) .....	2002
4. Celeste Troche (291) .....	2001
5. Danielle Downey (295) .....	2000

#### LOW FINAL SCORE (54 HOLES)

1. Robin Cook (227) .....	1999
2. Courtney Swaim (229) .....	1999

#### LOW ROUND

1. Cydney Clanton (66, 4th rd.) .....	2010
2. Celeste Troche (68, 2nd rd.) .....	2001
3. Danielle Downey (69, 2nd rd.) .....	2002
Marci Clemons (69, 3rd rd.) .....	1997
5. Danielle Downey (70, 3rd rd.) .....	2002





**The Jack Key Golf Facility features three indoor hitting bays, lounge and locker rooms, Club Repair and Video Analysis - Just Two Miles from campus.**





*With doors 14-feet wide and 20-feet tall, ample space is available for several student-athletes to train simultaneously.*

*With V1 Video Analysis, the Tigers have three camera angles: front view, down the line and overhead. It allows golfers to analyze their swings in slow motion, compare swings to tour players and much more.*





*The Jack Key Golf Center features Team locker rooms as well as accompanying lounge areas.*

*The center also includes a team meeting room, full-scale kitchen and a trophy/awards display.*



# Area named top spot for golf

## Golf Digest names Auburn-Opelika No. 1 in nation

JAIME SEALEY  
STAFF WRITER

Golfers who for years have claimed that the best golf is found right here in Lee County, can now say "I told you so."  
In Golf Digest's third Metro Golf survey, which will appear in the magazine's August issue set to hit newsstands Tuesday, the Auburn-Opelika Metropolitan Statistical Area (MSA) claimed the No. 1 spot.

The survey lists the United States' 330 metro areas and details the best and worst cities for golfers nationwide. And according to the survey results, Auburn-Opelika was found to be the most "Golfer-Friendly" in the country.  
While nabbing the top spot on the leaderboard may be a surprise for some, local officials and golf professionals have long known that the courses in Lee County were better than par.  
"We feel like people are finding out

what we already know," said Robyn Bridges, communications director with the Auburn-Opelika Convention and Visitors Bureau.  
After hearing the news, John Karabasz, head golf professional at Auburn Links, said he wasn't surprised at all either.

SEE GOLF, PAGE 5A



Cover of next month's Golf Digest. SPECIAL TO THE NEWS

The Auburn-Opelika area was named the No. 1 area in the country for golf, according to a survey published in the August 2006 edition of *Golf Digest*. The survey considered four factors - access to golf, weather, value of golf and quality of golf.

"In the eastern Alabama twin cities of Auburn and Opelika, a place known for the city-block size Auburn Tiger paw print in the main square and a college football stadium that seats more than 86,000 people, golf is becoming its second passion," said *Golf Digest's* Mike Stachura. "You see it everywhere you look."

# "PEOPLE ARE FINDING OUT WHAT WE ALREADY KNOW."

### Best and worst in the U.S.A.



- TOP 20**
1. Auburn-Opelika, AL
  2. Johnson City-Kingsport-Bristol, TN-VA
  3. Punta Gorda, FL
  4. Youngstown-Warren, OH
  5. Bloomington-Normal, IL
  6. Iowa City
  7. Utica-Rome, NY
  8. Wilmington, NC
  9. Gadsden, AL
  10. Johnstown, PA
  11. Waco, TX
  12. Sumter, SC
  13. Sioux Falls, SD
  14. Myrtle Beach
  15. Huntington-Ashland, WV-KY-OH
  16. Lakeland-Winter Haven, FL
  17. Flagstaff, AZ-UT
  18. Benton Harbor, MI
  19. Panama City, FL
  20. Davenport-Moline-Rock Island, IA-IL

- BOTTOM 20**
311. San Francisco
  312. Boulder-Longmont, CO
  313. Boston, MA-NH
  314. Chicago
  315. Seattle-Bellevue-Everett, WA
  316. Newark, N.J.
  317. Trenton, NJ
  318. Dover, DE
  319. Lowell, MA-NH
  320. Danbury, CT
  321. Nassau-Suffolk, NY
  322. Philadelphia, PA-NJ
  323. Providence-Fall River-Warwick, RI-MA
  324. Williamsport, PA
  325. Manchester, NH
  326. Bergen-Passaic, NJ
  327. Anchorage
  328. Bridgeport, CT
  329. New York
  330. Jersey City, NJ

- Robyn Bridges, Communications Director for the Auburn-Opelika Convention and Visitors Bureau

## Golf Digest tabs Auburn-Opelika No. 1



Mike Tankersley

**AUBURN** — In its third "Metro Golf" survey, which was published in the August issue of the magazine, *Golf Digest* ranked the Auburn-Opelika Metropolitan Statistical Area (MSA) as the most "golfer-friendly" metro area in the United States. The survey ranked 330 metro areas based on four factors: access to golf (49 percent of total score), weather (25 percent) and value of golf (15 percent). There was an increased emphasis on weather (temperature and precipitation) this year.

The Auburn-Opelika area earned its No. 1 ranking based on multiple three-star golf courses and the number of golf holes per population area. Top courses in the area include Robert Trent Jones Golf Trail's Grand National, Auburn Links, Indian Country Club, and Saughatche Golf courses within 15 minutes of the center of town.

The weather also helped Auburn-Opelika. The average daily high temperature in the area is slightly below 60 degrees only in December and January.

Alabama is the only state with two cities in the top 10 of the rankings. Gadsden

at Central Alabama Community College, has released his team's fall schedule. Events include the Brad Willis Memorial Tournament at Wynliakes, Aug. 26-28; Community College Fall College Invitational at Cullman Fall College Invitational, Sept. 11-13; CACC FarmLinks Golf Course in Syretreat, FarmLinks, Oct. 14-16; Harry Brown Invitational, FarmLinks, Oct. 17; Mississippi Gulf Coast Community College Fall Invitational, Windance Country Club, Gulfport, Miss., Oct. 23-25; Faulkner State Community College Fall Invitational, The Woodlands Golf Course, Gulf Shores, Nov. 13-15.

CACC also will participate in the Cleveland State Community College Fall Invitational, but the date of the tournament has not been confirmed.

**DOGFIIGHTS**

The team of Austin Jones, Robert E. Smith, Wilkins and Montgomery men's city dogfight last week at River Run. The second-place team, at Garrison, Ray Andrews, Ed Torres, Patterson and Roger Beverly. The team of Jess Aldivino, W.L. Coker, Walt Shell, Tom Drene and Ed Howell was third at plus-22. Howell, playing for the first time since having a heart attack three weeks ago, shot two shots better than his age.

Five dogfights are scheduled for this week, permitting the first dogfight Country Club on Monday. The second dogfight is scheduled for Tuesday at Wynliakes.

Key Forney won the women's dogfight at The Pines. Hee Kang was second with a plus-12. Tied for third at plus-7 were Marcelle Haynes, Ingrid, Mary O'Day and Kathy Wallace. This week's dogfight will be Thursday at Wynliakes.

**CALENDAR**

The Pines in Millbrook will hold a two-person scramble on Aug. 27-28. The tournament is open to the public. Call (334) 295-7233 for more information.

Montgomery-area juniors ages 11-18 are invited to compete in the Turbary Open at The Moor's golf course in Millbrook, Ala., 16-17. The two-day July tournament is sanctioned and ranked by the National Junior Golf Scoreboard and hosted by the Arrowhead Senior Golf Club. Call (850) 243-6333 or (251) 546-1148 or call 251-1588 to register to join the tour online at [www.arrowsenior.com](http://www.arrowsenior.com).

Alabama State University's Golf Classic has been rescheduled for 10 a.m. Aug. 13 at the Capitol Hill Senior Course on the Robert Trent Jones Golf Trail in Prattville. The event, originally planned for June 11, was postponed due to Hurricane Aletre. Registration has reopened for the event and will start at 10 a.m. Tee time is 1 p.m. with a shotgun start scramble, will be limited to the first 120 entries.

The fourth annual Central Alabama Community College Invitational — "Harry Brown Invitational" — is scheduled for Oct. 17 at FarmLinks Golf Club in Sylacauga. Format: two best balls per foursome. There are net and gross divisions. Entry fee is \$5,000 per person. Registration starts at 8 a.m. Fielding information: call CACC board Dave Jennings at (251) 515-4242, or FarmLinks at (251) 515-4242.

To submit results, holes-in-one, local notes or upcoming events for this feature, mail items to 425 Molton St., Montgomery, AL 36104. Call at 251-546-1148 or call 251-1588. You can also e-mail items to [mtankersley@gannett.com](mailto:mtankersley@gannett.com).



### The Auburn University Club at Yarbrough Farms

The city of Auburn, Alabama, is home to a 10-year-old golf club constructed by Auburn people for Auburn people, The Auburn University Club at Yarbrough Farms. The course opened in the fall of 1999 and it is the site for The Derby, one of the premier women's college golf tournaments in the country.

The Auburn University Course also played host to the 2003 NCAA East Men's Regional and numerous PGA Qualifying School events over the years.

Former Tiger Bucky Ayers is the Director of Golf and General Manager of The Auburn University Club. Ayers came to the AU Club from The Robert Trent Jones Golf Trail's Grand National site.

The Auburn University Club features an 18-hole championship golf course, state-of-the-art practice facilities and a full service clubhouse as well as office space for the Auburn University golf coaches and locker rooms for both the men's and women's golf teams.

Bucky Ayers (Director of Golf and Sales)

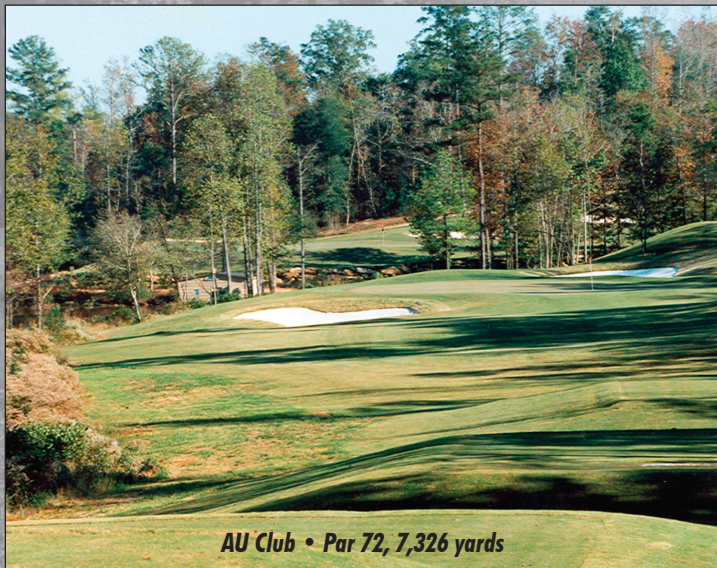
Jimmy Green (Head Golf Pro and Director of Instruction)

Ricky Smallridge (Director of Sales)

### Practice Facility

Utilizing 22 acres, the practice facility features a range of nearly 400 yards with tees at both ends allowing players to train in a variety of wind conditions. Additionally, a unique area has been designed for situation practice so that shots may be re-created and played into actual greens from every conceivable lie and length.

Furthermore, there are bentgrass and bermuda grass putting greens so that team members may prepare for whatever type of surface they may be facing in their next event. The practice facility is ideal for working on all aspects of the game and is outstanding for the golf teams, lessons and clinics, and for summer golf camp programs.



*AU Club • Par 72, 7,326 yards*

### Golf Course

Located off Shug Jordan Parkway, just north of campus, the Auburn University Club at Yarbrough Farms is situated on more than 200 acres of rolling wooded terrain. Endowed with outstanding natural amenities such as Yarbrough Lake, the 25-acre centerpiece of the property, and Saugahatchee Creek, which meanders along the 12th, 13th and 14th holes, the site is one of the top golf courses in the South.

At 7,326 yards from the back tees, the golf course carves through magnificent trees, across wetlands, along creeks and streams and around the lake. Natural and man-enhanced water features play a prominent role at The Auburn University Club as they blend throughout the property and are visible on 14 of 18 holes.

Designed with the intention of hosting an NCAA or other national championship, the course is a challenging yet playable for all levels of golfers. With subtly shaped Tift Eagle greens, surrounded by a balanced mix of chipping areas, bunkers and rough and fairways that roll and blend with the existing contours, The Auburn University Club at Yarbrough Farms is destined to become a distinguished addition to the Loveliest Village on the Plains.

### Designer

Former Auburn golfer Bill Bergin designed The Auburn University Club at Yarbrough Farms. The four-time All-SEC selection and member of Auburn's 1981 SEC Championship team began his design career in 1990 under Bob Cupp, the 1992 Architect-of-the-Year.



*AU Club Clubhouse*



*Outdoor Hitting Bays*

## HOME COURSES

### Home Courses

The Auburn University golf team is proud to have the finest golfing facilities for practice and competition of any college golf program in the country. With eight top-rated majestic courses, the Auburn University golf team has every means possible for preparation.

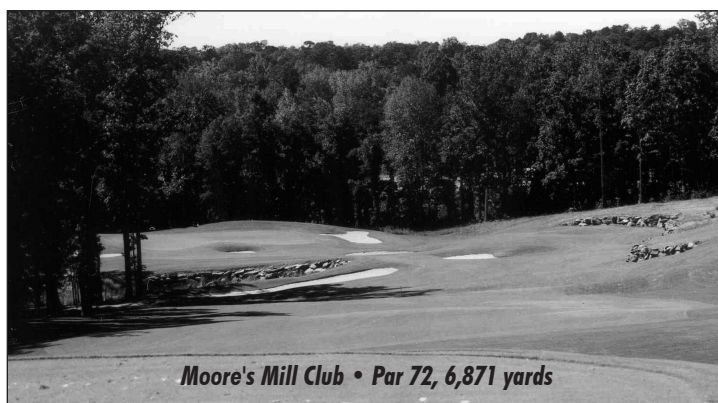
The Tigers have the advantage to play any of the courses any day of the year. Golf is a 365-day a year event in the desirable and favorable weather conditions in Auburn, Ala.

The 54-hole Grand National complex, part of the world-renown Robert Trent Jones Golf Trail, has two 18-hole par-72 courses and one 18-hole par-3 course. The Lake Course played host to the 2004 NCAA Women's Golf Championship and the 2000 NCAA Men's Golf Championship. It has also been the site of the 1999 SEC Women's Golf Championship, 1998 LPGA Tournament of Champions, 1997 Nike Tour Championship and the 1996 NCAA Women's Golf East Regional.

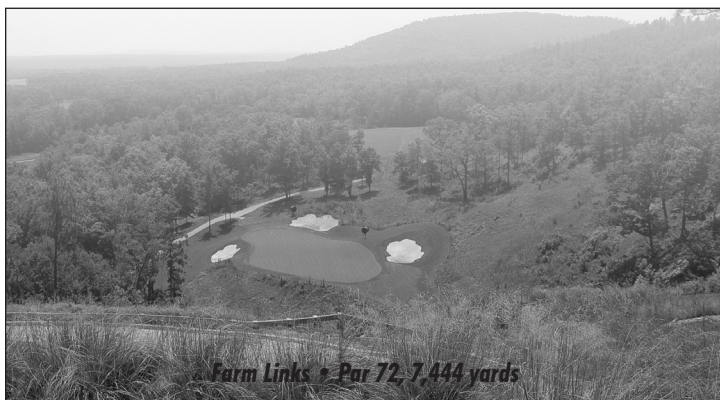
The Links Course is a traditional links layout and ranks as one of the most impressive tracks in the country. It played host to the 1997 SEC Men's Golf Championship. The 18-hole, par-3 course is a truly beautiful layout that allows Tiger golfers excellent practice on their iron and short game play. The driving ranges at The Trail courses are also a spectacle to see.



**Grand National Lakes • Par 72, 7,149 yards**



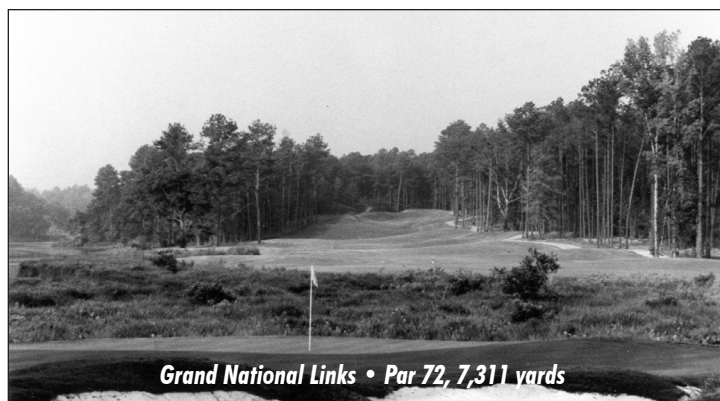
**Moore's Mill Club • Par 72, 6,871 yards**



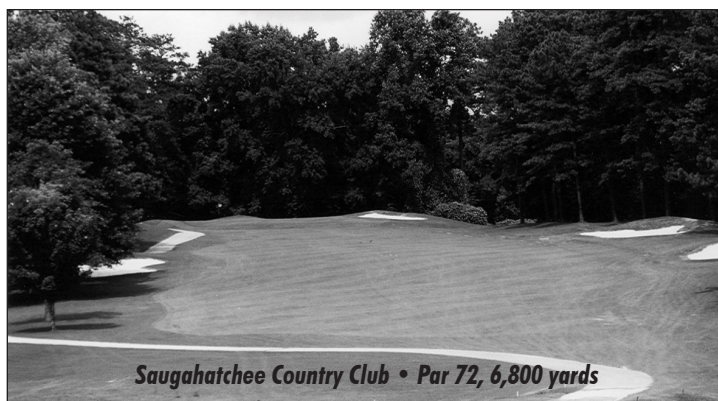
**Farm Links • Par 72, 7,444 yards**



**Auburn Links at Mill Creek • Par 72, 7,090 yards**



**Grand National Links • Par 72, 7,311 yards**



**Saugahatchee Country Club • Par 72, 6,800 yards**

# Inaugural Mascot Hall of Fame Member Six-Time UCA National Champion



## AUBURN UNIVERSITY

Auburn's beautiful main campus--graced by greenery and open spaces and highlighted by historic Samford Park--is made up of 375 buildings spread across 1,875 acres. Buildings in the main campus area are within walking distance of each other. Residence halls are only a short walk from classrooms, dining and athletic facilities. Auburn is located in the southeastern United States in east-central Alabama about 30 miles from the Georgia border.

U.S. News & World Report has ranked Auburn among the top 50 public universities nationwide for 18 consecutive years. Auburn is ranked a "Best Value" by the Princeton Review.

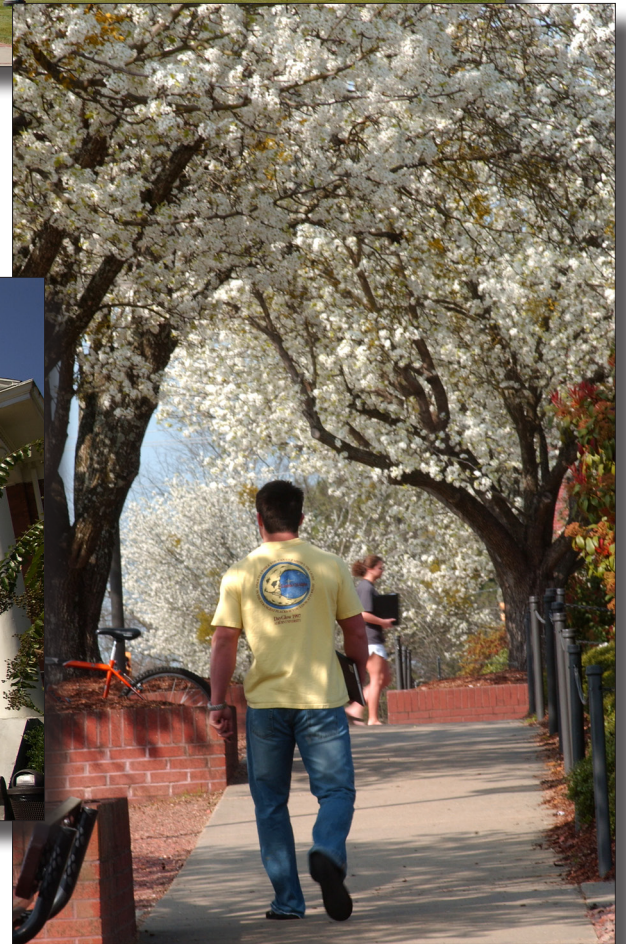
AU invests in extensive national assessments to obtain quality, data-driven information for measuring and continually improving instruction and student preparation.

More than 92 percent of our students and more than 95 percent of our alumni say that if they could start college over again, they would choose Auburn.

A 2005 Harvard survey ranked AU as one of the top six colleges and universities in the country as a place for young faculty to work, which has a lot to do with actively engaging students.

AU is the only university in the country to offer an undergraduate degree in wireless engineering, and the first in the Southeast to offer degrees in software engineering.

AU Libraries maintains the largest library in the state, with more than 3.2 million volumes in its collection. It subscribes to more than 9,000 journals and 250 electronic databases; provides library instruction and tours to students, prospective students and parents; and serves as an instructional resource for faculty.





**Auburn People**

Auburn faculty and alumni are world-class achievers in practically every arena. Here are just a few examples:

AU has graduated more than 232,658 students since it began in 1856. Currently, we have 210,472 living alumni around the world.

There are 98 Auburn clubs around the country whose primary goal is to raise scholarships for incoming freshmen. The Auburn Alumni Association and Auburn Club Program awarded a total of 188 scholarships for the 2011 - 2012 school year. Two clubs have endowments of more than \$100,000 and the Alumni Association Endowment stands at more than \$2.7 million.

The Student Alumni Association, with membership of over 3,400 students, offers three student scholarships for its rising senior members.

The Auburn Alumni Association has more than 46,000 members and contributes more than \$95,000 each year toward professorships and other faculty awards.

More than 12,000 people a year visit the Alumni hospitality tent before home football games.



# Did You Know?

*Auburn was named one of the top 10 places to live in the country by U.S. News and World Report in its 2009 rankings*



One of the state's fastest growing cities, Auburn has a population of about 47,000. An adjacent twin-city, Opelika, has a population of about 30,000. Atlanta, Ga., is only 100 miles to the northeast via Interstate 85; Birmingham is 100 miles to the north via U.S. 280 or I-85/65; Montgomery is 50 miles to the east via I-85; and the Gulf beaches are about 200 miles away. The university enjoys the advantages of security, seclusion and clean air and water. Auburn is a clean city with a mild climate that offers many cultural opportunities.



## ***Auburn's Eagles***

For over 100 years, eagles have been associated with Auburn University's football program. From a static presence on the sidelines to rousing flights over the field, WAR EAGLE has become an Auburn icon.

The role of Auburn University's eagles is to promote wildlife conservation as a part of the education initiatives of the U.S. Fish & Wildlife Service and the College of Veterinary Medicine's Southeastern Raptor Center. The USF&WS permits the Raptor Center to house eagles and use them on hundreds of educational presentations each year – including Auburn's home football games. Currently, three flighted eagles and numerous other non-releasable raptors are used for these educational programs. Eagles stir emotions in many people as they have come to symbolize strength, power and courage as well as other important values such as freedom, American heritage and the preservation of our environment. Golden Eagles Tiger (War Eagle VI), Nova (War Eagle VII) and Spirit (a Bald Eagle) are the eagles who have inspired football fans with their graceful flights over Jordan-Hare Stadium.

## ***Auburn Fight Song***

War...Eagle, fly down the field, Ever to conquer, never to yield.  
War...Eagle fearless and true. Fight on, you orange and blue.  
Go! Go! Go!  
On to vic'try, strike up the band,  
Give 'em hell, give 'em hell.  
Stand up and yell, Hey! War...Eagle, win for Auburn,  
Power of Dixie Land!

## ***Auburn Alma Mater***

On the rolling plains of Dixie  
'Neath its sun-kissed sky,  
Proudly stands, our Alma Mater  
Banners high.

To thy name we'll sing thy praise,  
From hearts that love so true,  
And pledge to thee our  
Loyalty the ages through.

We hail thee, Auburn, and we vow  
To work for thy just fame,  
And hold in memory as we do now  
Thy cherished name.

Hear thy student voices swelling,  
Echoes strong and clear,  
Adding laurels to thy fame  
Enshrined so dear.

From thy hallowed halls we'll part,  
And bid thee sad adieu;  
Thy sacred trust we'll bear with us  
The ages through.

We hail thee, Auburn, and we vow  
To work for thy just fame,  
And hold in memory as we do now  
Thy cherished name.

Composed by Bill Wood '42  
Word revision 1960



## ***Auburn Creed***

I believe that this is a practical world and that I can count only on what I earn. Therefore, I believe in work, hard work.

I believe in education, which gives me the knowledge to work wisely and trains my mind and my hands to work skillfully.

I believe in honesty and truthfulness, without which I cannot win the respect and confidence of my fellow men.

I believe in a sound mind, in a sound body and a spirit that is not afraid, and in clean sports to develop these qualities.

I believe in obedience to law because it protects the rights of all.

I believe in the human touch, which cultivates sympathy with my fellow men and mutual helpfulness and brings happiness for all.

I believe in my Country, because it is a land of freedom and because it is my own home, and that I can best serve that country by "doing justly, loving mercy, and walking humbly with my God."

And because Auburn men and women believe in these things, I believe in Auburn and love it.

- George Petrie (1945)

## ACADEMICS

Auburn University is committed to maintaining the highest standard of academic excellence. Auburn's academic curriculum is recognized nationally and internationally by leading education publications for its services in preparing students for challenges of the future.

Auburn student-athletes excel because of one of the top student support service programs in the country. The program includes a staff of seven full-time Academic Counselors, two Learning Specialists and two Eligibility Specialists.

### **Charlotte G. Lowder Student Athlete Development Center**

The Charlotte G. Lowder Student Athlete Development Center, with 33,000 square feet of dedicated space to students and learning, gives Auburn University the physical infrastructure that allows the ability to implement and expand the array of programs designed to enhance the academic performance of Auburn student-athletes. Located adjacent to the Auburn Athletic Complex, the facility is centrally located for easy access for all Tiger athletic teams.

The goals of the Charlotte G. Lowder Student Athlete Development Center are to create an opportunity for one-stop learning for all services including academic counseling, life skills, and tutorial services; to utilize the technology available to support academic missions; and to create a showplace that honors achievements of student-athletes. In addition, programs are designed to develop leadership skills and a strong altruistic attitude, which are fundamental characteristics of the Auburn graduate.

Within the walls of the center are the Academic Hall of Honor designed by Auburn student-athletes, two "smart" classrooms with new and innovative technology that hold 50 people per room, seven counselor offices as well as administrative support, the PAW (Promoting Academic Winners) office, Operation Follow-Through, the Student Athletic Advisory Committee office, 40 four-person tutorial rooms, a library resource area, a soft-study lounge, a 25-station computer classroom, the student "Cantina" for snacks and beverages and the tutor coordinator office.

The construction of the Student Athlete Development Center was made possible by the generosity of Robert and Charlotte Lowder and from the Lowder Family Foundation. Student-Athlete Support Services

The Tiger CHAMPS/Life Skills program focuses on five commitments that the NCAA has specified as necessary to a holistic approach to student development programming. Auburn University is committed to the growth and development of its student-athletes by promoting the following areas:

- Commitment to Academic Excellence
- Commitment to Athletic Excellence
- Commitment to Personal Development
- Commitment to Service, Outreach and Leadership
- Commitment to Career Development

# 62

The Auburn women's golf team has  
garnered 60 Academic All-SEC honors



**Patricia Sanz**  
**2009, 2010 and 2011 NGCA**  
**All-American Scholar-Athlete**

# 13

Five Auburn women's golfers  
have accounted for 11  
Academic All-America honors

## **2011-12 Auburn Women's Golf Schedule**

---

Sept. 11-13	The "Mo" morial Golf Course: Traditions Club at Texas A&M (Hosted by Texas A&M)	College Station, Texas
Oct. 7-9	Lady Tar Heel Invitational Golf Course: Finley Golf Course (Hosted by North Carolina)	Chapel Hill, N.C.
Oct. 21-23	Pac 12 / SEC Challenge Golf Course: Holston Hills Country Club (Hosted by Tennessee)	Knoxville, Tenn.
Oct. 28-30	The Landfall Tradition Golf Course: Country Club of Landfall (Hosted by North Carolina-Wilmington)	Wilmington, N.C.
Feb. 12-14	Central Florida Invitational Golf Course: Red Tail Golf Club (Hosted by Central Florida)	Orlando, Fla.
Feb. 26-28	Sugar Bowl Invitational Golf Course: English Turn Golf Club (Hosted by Tulane)	New Orleans, La.
March 16-18	Lady Gator Invitational Golf Course: Mark Bostick Golf Course (Hosted by Florida)	Gainesville, Fla.
Mar. 30-April 1	Liz Murphey Collegiate Classic Golf Course: UGA Golf Course (Hosted by Georgia)	Athens, Ga.
April 20-22	SEC Championship Golf Course: Blessings Golf Club (Hosted by Arkansas and the SEC)	Fayetteville, Ark.
May 10-12	NCAA Regional Championships Golf Course: TBA (Hosted by NCAA)	TBA
May 22-25	NCAA Championship Golf Course: The Legends Club (Hosted by Vanderbilt and the NCAA)	Franklin, Tenn.

