



2017-18
Women's Tennis
Factbook

TABLE OF CONTENTS

Quick Facts	2
2018 Schedule	3
2017-18 Roster	4-5
Auburn University/Yarbrough Tennis Center	6
Head Coach Lauren Spencer	7-8
Assistant Coach Chris Hooshyar	10
Players	11-18
Box Scores/2017 Results	19-24
Auburn Records	25
Year-by-Year Results	26-34
Records vs. Opponents	35
Auburn in the SEC	36
Auburn in the NCAA	37-38
Auburn in the ITA Rankings	39
All-Time Letterwinners	40

MEDIA INFORMATION

INTERVIEWS

All interview requests for Auburn head coach Lauren Spencer and Auburn student-athletes should be coordinated through Matt Penland, Auburn Athletics Communications. Interviews on match day will be conducted following the conclusion of competition. Admission to all home events is free and credentials are not required.

AUBURNTIGERS.COM

AuburnTigers.com is the official home for information on the Auburn women's tennis team, as well as head coach Lauren Spencer. The website includes roster, statistics and the 2017-18 schedule. Information is also available on Facebook and Twitter.

FACILITIES

The home of the Auburn men's and women's tennis program is the Yarbrough Tennis Center. The facility has six indoor courts, along with 12 outdoor courts. All of Auburn's home matches will be played at this facility. The Yarbrough Tennis Center also holds team locker rooms, coaches' offices and a training room.

QUICK FACTS

GENERAL INFORMATION

School Auburn University
 City / Zip Auburn, Ala. / 36849
 Founded Oct. 1, 1856
 Enrollment 25,078
 Nickname Tigers
 Colors Burnt Orange and Navy Blue
 Facility Yarbrough Tennis Center
 Affiliation NCAA Division I
 Conference Southeastern Conference
 President Dr. Jay Gogue
 Alma Mater Auburn (1969)
 Director of Athletics Jay Jacobs
 Alma Mater Auburn (1985)
 Senior Associate AD/SWA.. Meredith Jenkins
 University Website..... www.Auburn.edu

COACHING STAFF

Head Coach Lauren Spencer
 Alma Mater Louisiana Tech, 2003
 Season/Record at Auburn 7th/109-66 (.623)
 Career Seasons/Record. 12th/214-95 (.693)
 Assistant Coach Chris Hooshyar
 Alma Mater SMU, 2010
 Season 5th
 Office Phone (334) 501-7323

TEAM HISTORY

Inaugural Season 1978
 Season of Tennis 38th
 All-Time Record 501-487 (.507)
 NCAA Tournament Appearances 11
 Last Postseason Finish L, 2-4 vs. No. 5 Texas Tech (2017 - 3rd Round)

2016-17 REVIEW

Overall Record 25-11
 SEC Record / Finish 5-8/10th
 Final National Ranking 14th

2017-18 PREVIEW

Letterwinners Returning / Lost 6/3
 Newcomers 2
 Top Returners... Alizee Michaud/Andie Dikosavljevic
 Top Losses Roos van der Zwann

ATHLETICS COMMUNICATIONS

Women's Tennis SID Matt Penland
 Email msp0020@auburn.edu
 Cell Phone 256.343.4158
 Main Office Phone 334.844.9800
 Website AuburnTigers.com
 Facebook /AuburnWTennis
 Twitter @AuburnWTennis



January

19	ULM	AUBURN	5 p.m.
21	Oklahoma/Georgia State	AUBURN	10 a.m.
26	(1) Tulane	AUBURN	11 a.m.
27	(1) Consolation/Championship Round	AUBURN	10 a.m.

February

3	Cornell	TBD	TBD
4	Princeton	TBD	TBD
9-12	ITA National Team Indoor	New Haven, Conn.	All Day
17	Michigan State/Samford	AUBURN	12 p.m.
23-24	Blue Gray Championships	Montgomery Ala.	All Day

March

2	*Vanderbilt	Nashville, Tenn.	TBD
4	*Kentucky	Lexington, Ky.	TBD
8	*Mississippi State	AUBURN	2 p.m.
10	*Ole Miss	AUBURN	12 p.m.
16	*Alabama	AUBURN	2 p.m.
22	*South Carolina	AUBURN	2 p.m.
24	*Florida	AUBURN	12 p.m.
29	*Tennessee	Knoxville, Tenn.	TBD
31	*Georgia	Athens, Ga.	TBD

April

6	*Missouri	Columbia, Mo.	TBD
8	*Arkansas	Fayetteville, Ark.	TBD
13	*Texas A&M	AUBURN	2 p.m.
15	*LSU	AUBURN	12 p.m.

* - SEC Match

(1) - ITA Kickoff Weekend

All Times are Central



Name	Height	Class	Hometown (Last School)
Georgie Axon	5-6	So.	Welwyn, UK (St. Albans Independent College)
Jaeda Daniel	5-7	Fr.	Port Charlotte, Fla. (Florida Virtual School)
Andie Dikosavljevic	5-5	Sr.	Sunshine Coast, Australia (Sunshine Coast)
Alannah Griffin	5-7	Jr.	Solihull, England (Solihull)
Mary Katherine Lewis	5-7	Sr.	Marietta, Ga. (Mount Paran Christian)
Madeline Meredith	6-1	Fr.	Birmingham, Ala. (Homeschool)
Allie Michaud	5-8	Sr.	Orlando, Fla. (Stetson)
Taylor Russo	5-4	So.	Deerfield Beach, Fla.
Caroline Turner	5-6	Jr.	Highland Park, Texas

COACHING STAFF:

Head Coach: Lauren Spencer

Seventh Season

Associate Head Coach: Chris Hooshyar

Fifth Season

Volunteer Assistant: Jim Longbotham

Graduate Assistant: Michala Kucharova

Athletics Trainer: Kari Washburn

PRONUNCIATION GUIDE

Andie Dikosavljevic

dic-OH-sla-VIC

Allie Michaud

MEE-shood

Roos van der Zwaan

Rose van-der-ZWAHN

Chris Hooshyar

HOOSH-yar



Georgina Axon
So. • 5-6
Welwyn, UK



Jaeda Daniel
Fr. • 5-7
Port Charlotte, Fla.



Andie Dikosavljevic
Sr. • 5-5
Sunshine Coast, Australia



Alannah Griffin
Jr. • 5-7
Solihull, England



Mary Katherine Lewis
Sr. • 5-7
Marietta, Ga.



Madeline Meredith
Fr. • 6-1
Birmingham, Ala.



Alizee Michaud
Sr. • 5-8
Orlando, Fla.



Taylor Russo
So. • 5-4
Deerfield Beach, Fla.



Caroline Turner
Jr. • 5-6
Highland Park, Texas



Lauren Spencer
Head Coach
7th Season



Chris Hooshyar
Associate Head Coach
5th Season



Jim Longbotham
Volunteer Assistant



Michala Kucharova
Graduate Assistant



In 2005, Auburn University set out to make its men's and women's tennis teams two of the best programs in the country, starting with a state-of-the-art facility.

In August of 2006 construction began on Auburn's new facility. On Nov. 2, 2007, the City of Auburn/Auburn University Yarbrough Tennis Center was dedicated and opened as a new phase in Auburn tennis.

The facility has 33,314 square feet of indoor space with six indoor courts, 12 outdoor courts with stadium seating and 16 clay courts. The Yarbrough Tennis Center also houses a pro shop, men's and women's locker rooms, concessions and a meeting area. All 12 courts are world-class lighted courts used for both competition and practice by the Auburn tennis teams.

"This outstanding facility is a result of the hard work and dedication of numerous people from the City of Auburn and Auburn University," said Auburn Athletics Director Jay Jacobs. "One of the finest tennis facilities in the Southeastern Conference, the Yarbrough Tennis Center will be a tremendous asset for the men's and women's tennis programs at Auburn for years to come."

As one of the best facilities in the Southeastern Conference, Auburn hosted the 2008 SEC Women's Tennis Championships and the men's tournament in 2009.

The City of Auburn/Auburn University Yarbrough Tennis Center replaced the Luther Young Tennis Complex, Auburn's tennis home since 1978.

QUICK FACTS

Name	Yarbrough Tennis Center
Year Opened	2008
Indoor Facility	33,314 sq. feet
Courts	6 Indoor 12 Outdoor 16 Clay Courts



LAUREN SPENCER

HEAD COACH

LOUISIANA TECH, 2003
 7TH SEASON AT AUBURN • 12TH OVERALL
 RECORD AT AUBURN: 109-66 (.623)
 CAREER RECORD: 214-95 (.693)

 @CoachLSpencer

Lauren Spencer is in her seventh season at the helm of the Auburn women's tennis program after being named head coach on Oct. 6, 2011.

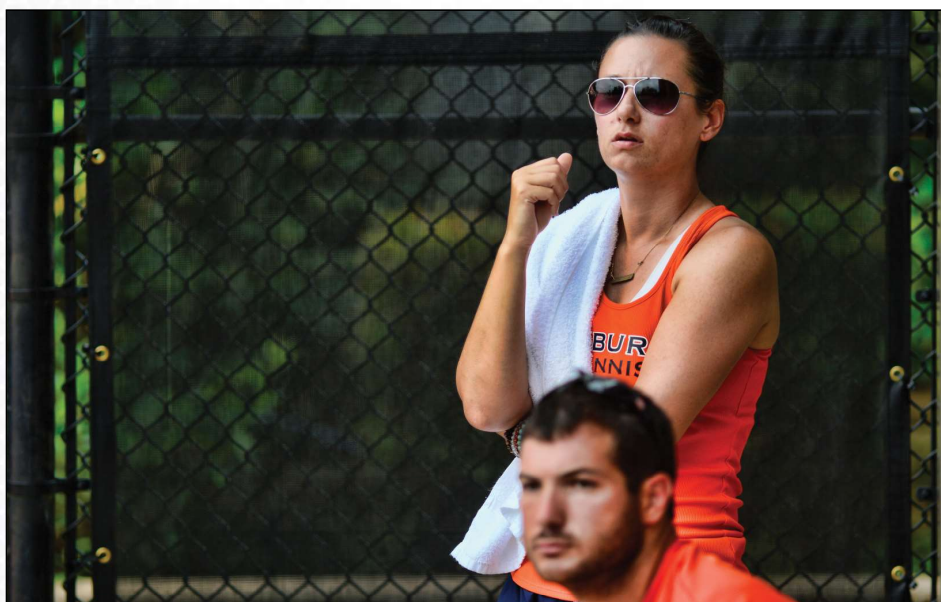
Spencer, the all-time winningest coach in school history, surpassed 200 career wins and 100 wins at Auburn in 2017 and now holds a 214-95 overall record (109-66 at Auburn).

Spencer was named the ITA Southern Region Coach of the Year for the second-consecutive year in 2017 after leading the Tigers to a program-record 25 wins and a second-straight appearance at the NCAA Championships Round of 16. The Tigers finished the season ranked 14th with a final record of 25-11 (5-8 SEC). Three Tigers were selected All-SEC - Alizee Michaud (First Team), Andie Dikosavljevic (Second Team) and Taylor Russo (Freshman).

Auburn opened the 2017 season with seven-straight wins, the best start in school history and climbed to as high as fourth in the Oracle/ITA rankings, which is the highest ranking in program history. The Tigers upset No. 4 Georgia at the 2017 SEC Championships to advance to the semifinals. Auburn then hosted the NCAA Regionals for the second-straight year, defeating DePaul and Florida State to advance to the NCAA Championships Round of 16.

Michaud broke the single-season school record for combined wins with 58 (33 singles, 25 doubles). She, along with Dikosavljevic, also advanced to the Round of 64 in the NCAA Championships Singles Competition and the semifinals of the NCAA Championships Doubles Competition.

Spencer was selected at the ITA Southern Region Coach of the Year in 2016 after leading



Auburn to arguably one of the top finishes in program history. She led the Tigers to a 24-8 (9-4 SEC) record, which is the most regular season and SEC wins in school history. Auburn also finished the season with its highest final ranking in school history at No. 12.

Hosting a regional for the first time in school history, Auburn defeated Alcorn State and Arizona State to advance to the NCAA Championships Round of 16. Pleun Burgmans and Alizee Michaud were named All-Americans in doubles, which was the third straight honor for Burgmans.

In 2015, Spencer led Auburn to its third-straight NCAA Tournament appearance after compiling 16 wins. Spencer also helped Pleun Burgmans and Emily Flickinger to back-to-back All-America honors after the duo finished the season 24-11.

In 2014, Spencer guided the Tigers to the second round of the NCAA Tournament, while also coaching the doubles team of Burgmans and Flickinger to the semifinals of the NCAA Individual Championships.

The Tigers won 19 matches in 2013, the most since 1989 and second-most in school history. Auburn also earned victories in the NCAA and SEC tournaments for the first time since 2008 and 2009, respectively. During the dual season, Auburn won 14-straight matches and reached as high as No. 14 in the ITA rankings.

Auburn finished the 2013 SEC season at 7-6, the most wins in conference play for the program since 2002.

Despite not taking over the Auburn program until October 2011, the Tigers showed marked improvement in year one under Spencer.



Spencer guided the Tigers to a 3-8 mark in SEC play in 2012. That record was a 300 percent improvement after winning just one conference match in 2010-11.

Auburn also won back-to-back league matches in 2012 for the first time in nearly three years and reached three victories in the rigorous SEC for the first time since 2010.

In her time at Auburn, Spencer has had three players selected as All-Americans and four first team All-SEC selections.

Prior to her appointment at Auburn, Spencer (formerly Longbotham Meisner) spent the previous five seasons as head coach at Southern Methodist University where she led the program to a NCAA Sweet 16 in 2011 and the program's first-ever Conference USA Tournament championship in 2009.

SMU's career leader in wins by a coach (105) and winning percentage (.784), Spencer directed the Mustangs to a school record three-consecutive NCAA Tournament appearances from 2009-11 and was named C-USA Coach of the Year in 2009.

Spencer was named the 2011 Intercollegiate Tennis Association (ITA) Texas Region Coach of the Year for her accomplishments. Besides leading the team to its first Sweet 16 appearance since 1988 and No. 29 final ranking, she also coached Marta Lesniak, who became the program's first All-American in over 20 years.

In 2009, the Mustangs went 28-3 and won the Conference USA Championship, which was the first league tournament title in school history. The team advanced to the second round of the NCAA Championship and finished with the No. 23 national ranking, the highest since 1989.

The 2010 Mustang team advanced to the NCAA second round and finished with a 24-5 record and No. 29 ranking.

In five years at SMU, Spencer coached 40 players to all-conference singles and doubles selections, including Lesniak, who was the C-USA Player of the Year in 2010 and 2011.

Her student-athletes not only excelled athletically, but also academically as she had 35 Conference Commissioner's Honor Roll members, one C-USA Tennis Scholar-Athlete of the Year and five consecutive ITA All-Academic teams. Four of her five squads recorded the highest team GPA of all SMU sports.

Spencer also served as the C-USA Women's Tennis coaches' chairperson, a two-year position she was voted

COLLEGIATE COACHING CAREER

Head Coach, SMU (2007-2011)

	Year	Record	Pct.	Conf. Finish
SMU	2007	19-5	.792	2nd
SMU	2008	11-10	.524	4th
SMU	2009	28-3	.903	1st
SMU	2010	24-5	.828	T-3rd
SMU	2011	23-6	.793	2nd

Head Coach, Auburn (2011-Present)

	Year	Record	Pct.	Conf. Finish
Auburn	2012	8-13	.381	5th (West)
Auburn	2013	19-9	.679	3rd (West)
Auburn	2014	17-11	.607	T-6th
Auburn	2015	16-14	.533	12th
Auburn	2016	24-8	.774	4th
Auburn	2017	25-11	.695	10th

NOTABLE WINS

	Opponent	Date
1st Win	def. UT San Antonio	1/27/07
25	def. Oklahoma St.	2/09/08
50	def. DePaul	3/25/09
57	First CUSA Title (def. Tulsa)	4/19/09
58	First postseason win (def. No. 39 Texas A&M)	5/09/09
75	def. Southern Miss	3/21/10
100	def. Houston	4/10/11
105	First Sweet 16 appearance (def. No. 12 Florida St.)	5/15/11
125	def. Ole Miss	3/03/13
150	def. Middle Tennessee	1/17/15
175	def. Georgia Southern	2/20/16
200	def. Troy	2/14/17
1st Auburn win	def. Troy	1/28/12
6	First SEC Win (def. Miss. St.)	3/4/12
25	def. Tennessee	4/14/13
27	First postseason win at AU (def. St. Mary's)	5/10/13
50	def. Prairie View A&M	2/07/15
70	Auburn's all-time win leader (def. N. Florida)	2/20/16
74	First win vs. top 10 (def. No. 9 LSU)	3/5/16
75	def. Tennessee	3/11/16
79	First win against Alabama	4/01/16
84	First Sweet 16 (def. No. 23 Arizona St.)	5/14/16

Auburn Milestones in BOLD

into by her fellow C-USA coaching peers. In 2008, she was selected by the Intercollegiate Tennis Association (ITA) to serve a three-year term on the Southwest Regional Committee.

Prior to being named head coach at SMU in August 2006, Spencer served as an assistant for the Mustangs for three seasons (2003-06) where she helped guide the team to a 53-27 record and an NCAA second round appearance in 2004. During her three years as an assistant, SMU was conference runners-up all three seasons and had two ITA Top 50 team finishes.

Before arriving to SMU, Spencer spent a semester as a volunteer assistant coach for her alma mater, Louisiana Tech.

A four-year letterwinner at Louisiana Tech from 1999-2003, Spencer (formerly Longbotham) was the team captain for two years. Spencer was a mainstay in the Louisiana Tech lineup both in singles and doubles play and was named the team's Singles Player of the Year in 2000.

A native of Groesbeck, Texas, Spencer earned her Bachelor of Science degree in education from Louisiana Tech in 2003 after majoring in secondary education and minoring in history and fitness and wellness. She is married to Stephen Spencer. Her son, Courtney James, was born in May 2012.



CHRIS HOOSHYAR

ASSOCIATE HEAD COACH

SMU, 2010
5TH SEASON AT AUBURN • 7TH OVERALL
2016 ITA National Assistant Coach of the Year

 @ChrisHooshyar

Chris Hooshyar is in his fifth season at Auburn. He was named Associate Head Coach on July 7, 2016. A noted recruiter, Hooshyar has been instrumental in bringing some of the top talent in the world to Auburn.

In Hooshyar's fourth season at Auburn and first season as Associate Head Coach, he helped lead the Tigers to a 25-11 record and their second-straight appearance at the NCAA Sweet 16. Three Tigers were named All-SEC – Alizee Michaud (First Team), Andie Dikosavljevic (Second Team) and Taylor Russo (Freshman) – while Michaud and Dikosavljevic advanced to the Round of 64 in the NCAA Championship Singles Competition. Michaud and Russo advanced to the semifinal round of the NCAA Championship Doubles Competition.

In his third season at Auburn, the assistant from Manchester, England, helped lead the Tigers to many program firsts. Finishing the season 24-8 (9-4 SEC), Auburn set program records for single season wins and single season SEC wins. The Tigers also hosted a NCAA Regional for the first time in program history.

After taking over the team's fitness in for the 2015-16 season, Hooshyar worked to build one of the most physically fit teams in the SEC. Finishing 25-28 in matches that reached the third set in the 2015 season, the Tigers went 38-20 in the same scenario last year.

In his first year at Auburn, Hooshyar was a part of helping the Tigers to a 17-11 overall record and second-round berth in the NCAA Tournament. Hooshyar also helped coach Pleun Burgmans and Emily Flickinger to the semifinal round of the NCAA Championships in doubles.

Before coming to Auburn, Hooshyar was a volunteer assistant coach for the past two seasons at Southern Methodist University, the same school where he played for four years as an undergraduate. Hooshyar was actually playing at SMU at the same time Longbotham-Meisner was the head coach of the women's team.

In his two years as volunteer assistant for the SMU women's tennis team, Hooshyar helped coach the team to a 13-match turnaround from the 2012 spring season to 2013. Last season, the Mustangs went 14-10 in the spring and reached the Conference USA Tournament semifinals, while also tallying four wins against ranked opponents. The team finished the year ranked No. 51 in the nation by the Intercollegiate Tennis Association (ITA).

As a player, Hooshyar captained the SMU men's team for his final two seasons and compiled more than 35 singles victories in his four years. He posted the third-highest win total on the team in singles during his final year

and second-highest in doubles.

Hooshyar's best season arguably came during his sophomore year when he went 14-8 in singles play, including a singles win in the first round of the 2008 NCAA Tournament against Texas A&M. In that match, Hooshyar defeated Mike Beatty at the No. 6 spot in straight sets, 6-0, 7-6 (6), for his first NCAA victory.

As a junior player in England, Hooshyar was ranked as the top player in England throughout the junior process. Trying his hand on the ATP circuits, he made two quarterfinals in the ATP Manchester and Nottingham Challengers and was ranked as high as No. 915 in the world.

Chris is married to the former Meagan Surrency, who currently serves as Auburn's director of Olympic recruiting.





GEORGIE AXON

5-6 | SO - 1L | Welwyn, UK (St. Albans Independent College)

As a Freshman

Spring 2017:

Finished the season with a 26-11 record in singles ... Had a 5-1 singles record against ranked opponents ... Ranked second on the team with wins in singles ... Defeated No. 63 Caroline Brinson (Georgia) 6-4, 6-3 at the SEC Championships ... Clinched five matches, including vs. Florida State at the NCAA Regional to send the Tigers to the Sweet 16 ... Finished the season ranked No. 63 in doubles ... Paired with Caroline Turner for a 15-7 record and ranked third on the team with 21 doubles wins overall

Fall 2016:

Finished the fall with a 9-4 record in singles ... Won the Myke Loomis singles draw at the Roberta Alison Classic in Tuscaloosa ... Picked up three singles victories over ranked opponents, including a 7-5, 6-4 win over Alabama's No. 33 Andie Daniell ... Paired with Caroline Turner in the Rice Invitational and picked up wins over No. 41 Julia O'Loughlin and Marueen Slatter (Denver) and No. 28 Wendy Zhang and Lindsey Hodge (Rice).

Prior to Auburn

Ranked No. 104 in the ITF and No. 10 in the European Rankings ... Competed in the Junior Wimbledon in 2016 ... Also competed in the 2016 Summer Cup for Great Britain ... She has won four ITF titles and seven doubles titles ... She has competed in multiple Great Britain Summer and Winter Cups, including a silver medal at the Winter Cup ... Qualified for the World Junior Tennis Tournament and the Junior Fed Cup ... Reached the final 16 in the Junior Europeans ... Competed in the Junior Wimbledon in doubles.

Personal:

Daughter of Jeremy and Julia Axon ... Has two brothers, Tom and Alex

AXON'S RESULTS

SINGLES

Year	Overall	Dual	SEC	No. 1	No. 2	No. 3	No. 4	No. 5	No.6
2016-17	26-11	17-7	4-4	--	--	2-0	8-6	4-1	3-0
Career	35-15	17-7	4-4	0-0	0-0	2-0	8-6	4-1	3-0

DOUBLES

Year	Overall	Dual	SEC	No. 1	No. 2	No. 3
2016-17	21-15	15-9	3-4	--	3-1	12-8
Career	27-21	15-9	3-4	--	3-1	12-8



JAEDA DANIEL

5-7 | FR - HS | Port Charlotte, Fla. (Florida Virtual School)

Prior to Auburn:

WTA Professional career-high ranking of 615 (singles) ... Maintained a top-20 junior ranking throughout her career, ranking as high as eighth in the country ... Pro career-high ranking in doubles of 713 ... Easter Bowl Champion ... Les Petite As Doubles Champion

Personal:

Daughter of Chevaughn and Mhyrlito Daniel ... Has two siblings: Jeannez and Jeovaughni ... Served in her home community as a DTLB Ambassador, working with inner city youth to improve their tennis skills ... Majoring in Psychology

DANIEL'S RESULTS

SINGLES

Year	Overall	Dual	SEC	No. 1	No. 2	No. 3	No. 4	No. 5	No. 6
2017-18	0-0	0-0	0-0	--	--	--	--	--	--
Career	0-0	0-0	0-0	--	--	--	--	--	--

DOUBLES

Year	Overall	Dual	SEC	No. 1	No. 2	No. 3
2017-18	--	--	--	--	--	--
Career	--	--	--	--	--	--



ANDIE DIKOSAVLJEVIC

5-5 | SR - 3L | Sunshine Coast, Australia (Sunshine Coast)

ITA Southern Region Cissie Leary Award for Sportsmanship (2017)
Second Team All-SEC (2017)
First Team All-SEC (2016)
USTA/ITA Southern Regional Singles Champion (2015)

As a Junior

Spring 2017:

Earned Second Team All-SEC honors ... Selected to the NCAA Championships singles tournament ... Finished the season with a 20-12 record in singles and had seven wins over ranked opponents ... Ranked No. 38 in singles and No. 79 in doubles in the final individual rankings ... Defeated No. 12 Sydney Campbell (Vanderbilt) 6-2, 4-6, 7-5 ... Defeated No. 32 Felicity Maltby (Texas Tech) 6-0, 6-1 ... Clinched two matches ... Partnered with Taylor Russo and Alannah Griffin to post a 19-16 doubles record ... Clinched the doubles point with Griffin in eight matches

Fall 2016:

Preseason No. 13 in singles ... Preseason No. 58 with partner Alannah Griffin in doubles ... Finished runner-up at the 2016 USTA/ITA Southern Regional ... Posted a 4-3 record in singles ... Earned an at-large bid to the 2016 USTA/ITA Indoor Intercollegiate Championships ... Finished the fall with a 4-1 doubles record ... Paired with Taylor Russo to win the consolation doubles bracket at the Southern Regionals.

As a Sophomore

Spring 2016:

Finished the season with a 25-14 singles record ... Led the team with 13 wins against nationally ranked opponents ... Clinched five matches for the Tigers, including the match against No. 23 Arizona State to advance to the NCAA Championships Round of 16 ... Was selected to participate in the NCAA Championships Singles Tournament ... Partnered with Paula de Man and Alannah Griffin to

post a 19-10 doubles record ... Finished the season 15-3 with Griffin, including a win over Florida's No. 68 Anna Danilina/Brianna Morgan in the SEC Tournament.

Fall 2015:

Finished the fall with an 8-5 record ... Won the USTA/ITA Southern Regional Singles Championship including two wins against ranked opponents ... Beat the preseason No. 15 player at the USTA/ITA National Indoor Championship in Flushing Meadows N.Y. ... Competed in the Riviera/ITA All-Americans in Pacific Palisades, Calif.

As a Freshman

Spring 2015:

Led the team with 20 singles wins during freshman season ... Posted a 20-14 overall mark in singles along with a 15-11 record in dual matches ... Was a perfect 3-0 at the No. 1 line and posted a 7-7 mark on court two during singles play ... Deafeated Ole Miss' Arianne Hartono, 7-6 (5), 7-6 (6) to pick up her first career win over a ranked opponent ... Finished with a 4-4 mark in doubles and 1-1 record in dual matches

Fall 2014:

Recorded a 5-3 record in singles ... Advanced to the quarterfinals of the Miami Fall Invite in singles ... Made it to the Round of 32 at the USTA/ITA Southern Regional ... Went 3-3 in doubles during the fall ... Advanced to the ITA Southern Regional Round of 16 with Paula de Man in doubles

Prior to Auburn

2014 Qualified for Junior Australian Open ... 2013 Semi-Finalist 18/U Australian Nationals.

Personal

Daughter of Zoran and Borjana Dikosavljevic ... Sister Katarina played at the University of West Florida.

DIKOSAVLJEVIC'S RESULTS

SINGLES

Year	Overall	Dual	SEC	No. 1	No. 2	No. 3	No. 4	No. 5	No.6
2014-15	20-14	15-11	5-3	3-0	7-7	4-2	1-2	--	--
2015-16	25-14	17-8	7-5	10-6	4-2	3-0	--	--	--
2016-17	20-12	16-8	5-3	4-3	12-5	--	--	--	--
Career	65-40	48-27	17-11	17-9	23-14	7-2	1-2	--	--

DOUBLES

Year	Overall	Dual	SEC	No. 1	No. 2	No. 3
2014-15	4-4	1-1	0-1	--	1-0	0-1
2015-16	19-10	17-7	4-5	--	7-5	10-2
2016-17	19-16	15-15	4-9	0-2	13-13	2-0
Career	27-15	18-8	4-6	0-2	21-18	12-3



ALANNAH GRIFFIN

5-7 | JR - 2L | Solihull, England (Solihull)

All-Freshman SEC (2016)

As a Sophomore

Spring 2017:

Posted an 18-11 record in singles ... Ended the season on a seven-match win streak ... Defeated Southern California's No. 46 Jessica Failla 6-2, 7-6 to clinch match and advance the Tigers to the National Team Indoor Championships ... Clinched match vs. No. 4 Georgia at the SEC Championship to advance to semi-finals ... Finished with a 19-20 doubles record, including a 15-13 mark with Andie Dikosavljevic ... Clinched the doubles point with Dikosavljevic in eight matches ... Finished the season ranked No. 79 in doubles

Fall 2016:

Preseason No. 58 in doubles with partner Alannah Griffin ... Finished the fall with a 4-4 record in singles and a 3-5 record in doubles ... Finished with two wins at the Roberta Alison Fall Classic to finish third ... Advanced to the Consolation Doubles final with teammate Alizee Michaud at the ITA Southern Regional.

As a Freshman

Spring 2016:

Finished with a 28-13 record in singles for the second most individual wins for the team on the season ... Tied for fifth all-time with 28 single season victories ... Clinched five matches for Auburn ... Partnered with Andie Dikosavljevic to go 15-3 in doubles and finished with a 25-11 record in doubles ... Ranks fifteenth all-time with 25 single season doubles victories and tied for sixth all-time with 53 combined victories on the season.

Fall 2015:

Finished the fall season with a 10-6 record ... Advanced to the back-draw semifinals at the USTA/ITA Regional Championship ... She advanced to the finals of the Mercer Bears Gridiron Invitational ... Teamed up with fellow freshman Caroline Turner in doubles and posted a 7-2 record while also winning the Mercer Bears Gridiron Invitational in doubles

Prior to Auburn

British U14 National Champion ... Represented Great Britain in the IC Cup in India ... Won eight ITF doubles events ... Was the 2013 U18 National Doubles Champion ... Played in the Junior Wimbledon qualifiers

Personal

Daughter of Wendy and Peter Griffin ... Has three siblings, Ollie, Duncan and Natalie ... Majoring in psychology

GRIFFIN'S RESULTS

SINGLES

Year	Overall	Dual	SEC	No. 1	No. 2	No. 3	No. 4	No. 5	No.6
2015-16	28-13	18-7	8-2	--	--	3-0	15-7	--	--
2016-17	18-11	14-7	4-4	--	--	1-1	4-4	4-2	5-0
Career	46-24	32-14	12-6	--	--	4-1	19-11	4-2	5-0

DOUBLES

Overall	Dual	SEC	No. 1	No. 2	No. 3
25-11	17-7	5-4	--	6-1	11-6
19-20	16-15	4-9	1-0	13-13	2-2
44-31	33-22	9-13	1-0	19-14	13-8



MARY KATHERINE LEWIS

5-7 | SO - 2L | Marietta, Ga. (Mount Paran Christian)

As a Junior

Spring 2017:

Clinched the doubles point with Sarah Beth Dolinger against Alabama A&M

Fall 2016:

Did not compete.

As a Sophomore

Spring 2016:

Did not compete.

Fall 2015:

Did not compete in any fall tournaments

As a Freshman

Spring 2015:

Was 1-1 in dual matches and finished the year with a 5-6 mark overall ... Earned first career singles win against Alabama A&M ... Was 6-1 in doubles play and finished 2-0 in dual matches

Fall 2014:

Won the C-flight at the USTA Clay Court Championships with Jen Pfeifler ... Finished the fall with a 4-1 doubles record ... Went 1-1 with classmate Andie Dikosavljevic in doubles ... Posted a 4-5 record in singles

Prior to Auburn

Attended Mount Paran Christian School and trained at Baskin McGill Tennis Academy ... Advanced to the semi-

finals of the Southern Junior Cup Hard Court Nationals in 2013 ... Advanced to the GHSA Elite Eight in 2012.

Personal

Daughter of Jon and Mary Margaret Lewis ... She has two siblings, Caroline and Dryden.

LEWIS' RESULTS

SINGLES

Year	SINGLES										DOUBLES					
	Overall	Dual	SEC	No. 1	No. 2	No. 3	No. 4	No. 5	No. 6	Overall	Dual	SEC	No. 1	No. 2	No. 3	
2014-15	5-6	1-1	0-1	--	--	--	--	1-0	0-1	6-1	2-0	0-0	1-0	--	--	
2015-16	--	--	--	--	--	--	--	--	--	--	--	--	--	--	--	
2016-17	--	--	--	--	--	--	--	--	--	1-0	1-0	--	--	--	1-0	
Career	5-6	1-1	0-1	--	--	--	--	1-0	0-1	7-1	3-0	0-0	1-0	--	1-0	



MADELINE MEREDITH

6-1 | FR - HS | Birmingham, Ala. (Homeschool)

Prior to Auburn:

Top-rated recruit in the state of Alabama and No. 23 ranked recruit nationally ... Ranked No. 6 in the southeast according to TennisRecruiting.net ... Advanced to the semifinals of the 2016 USTA National Selection Tournament ... Reached the finals of the 2016 Southern Closed BG 18's Championship ... Won the 2016 Atlanta ITF Doubles Championship ... Competed in the 2016 Pan American Championships ITF ... Gold Ball winner at the 2015 USTA Spring Team Championships and Bronze Ball winner in doubles at the 2015 USTA Girls 16 National ... Won the 2014 VI Copa Mangu in Santo Domingo, Dominican Republic

MEREDITH'S RESULTS

SINGLES											DOUBLES				
Year	Overall	Dual	SEC	No. 1	No. 2	No. 3	No. 4	No. 5	No. 6	Overall	Dual	SEC	No. 1	No. 2	No. 3
2017-18	0-0	0-0	0-0	--	--	--	--	--	--	--	--	--	--	--	--
Career	0-0	0-0	0-0	--	--	--	--	--	--	--	--	--	--	--	--



ALIZEE MICHAUD

5-8 | SR - 2L | Orlando, Fla. (Stetson)

- First Team All-SEC (2017)**
- SEC All-Tournament Team (2017)**
- USTA/ITA Southern Region Singles Champion (2017)**
- USTA/ITA Southern Region Singles Champion (2016)**
- ITA All-American (2016)**
- First Team All-SEC (2016)**

As a Junior

Spring 2017:

Advanced to the second round of the NCAA Championships in doubles ... Recorded 33 singles wins, which ranks third all-time in single season school history ... Her 58 combined wins (33 singles, 25 doubles) are the most in a single season in school history ... Led the team with 14 wins over ranked opponents including No. 11 Gabriela Talaba (Texas Tech), No. 14 Kennedy Shaffer (Georgia) and No. 17 Arianne Hartono (Ole Miss) ... Earned All-SEC First Team honors and was named to the SEC All-Tournament Team ... Clinched three matches ... 25 doubles wins ranked second on the team ... Combined with Taylor Russo for a 22-12 record with eight wins over ranked opponents ... Clinched the doubles point with Russo in four events

Fall 2016:

Preseason No. 25 in singles ... Preseason No. 27 in doubles with partner Taylor Russo ... Advanced to the Round of 16 at the USTA/ITA National Indoor Intercollegiate Championships ... Won the ITA Southern Regional singles bracket (Oct. 17) ... Competed in the Riviera/ITA Women's All-American in main draw singles bracket ... Paired with Taylor Russo to advance to the main draw doubles bracket of the ITA Women's All-American after battling through the qualifying bracket ... Finished the fall with a 10-3 singles record, including two wins over ranked opponents ... Won the Rice Invitational singles bracket (Sept. 25) Finished the fall with a 7-5 doubles record.

As a Sophomore

Spring 2016:

Finished the season 21-6 in singles ... Posted a 9-5 record against ranked opponents, including wins over No. 13 Jasmine Lee of Mississippi State (Mar. 24) and No. 13 Frances Altick of Vanderbilt

(Apr. 15) ... Clinched five matches on the season ... Advanced to the NCAA Singles Tournament ... Finished the season 26-10 in doubles ... Paired with Pleun Burgmans in the No. 1 spot and posted a 14-6 record ... The duo finished with an 8-4 record against ranked opponents, including a win against No. 3 Brooke Austin/Kourtney Keegan of Florida in the SEC Tournament ... Advanced to the second round the the NCAA Doubles Tournament with a win over Michigan's No. 11 Brienne Minor/Mira Ruder-Hook.

Fall 2015:

Plagued by injuries, Alizee finished the fall season 3-1 in singles ... She picked up two wins against ranked opponents.

As a Freshman (at Stetson)

2014-15:

Posted a perfect 15-0 record in the regular season at the No. 1 spot ... Selected for the NCAA Singles Championships ... Named the Atlantic Sun Women's Tennis Freshman of the Year and Player of the Year ... Was the only A-Sun player to finish 6-0 in conference at No. 1 singles ... Finished 8-5 in doubles with Ashley Dean competing at the No. 1 and No. 2 spots

Prior to Auburn

2013 Florida Class 4A Girls State Champion ... Finished 2013 season undefeated and was named Florida High School Player of the Year ... Became just the second Dr. Phillips player to win the state championship and just the 12th girl from the Central Florida area to achieve the feat in the 75-year history of the tournament ... Ranked as high as 10th in the nation by TennisRecruiting.net ... Defeated two-time defending state champion Joulia Likhanskaia of Winter Park on the way to the state title

Personal

Daughter of Nicole and Vincet Michaud ... Has two younger siblings, Marine and Oceane ... Trained in France for most of her childhood ... Wants to become a lawyer

MICHAUD'S RESULTS

SINGLES

Year	Overall	Dual	SEC	No. 1	No. 2	No. 3	No. 4	No. 5	No. 6	DOUBLES					
										Overall	Dual	SEC	No. 1	No. 2	No. 3
2014-15*	25-4	15-0	---	15-0	---	---	---	---	---	11-7	11-7	---	11-7	---	---
2015-16	21-6	18-4	7-4	2-2	9-2	7-0	---	---	---	26-10	21-7	9-4	14-6	7-1	---
2016-17	33-13	23-9	6-7	14-7	9-2	--	--	--	--	25-14	17-8	3-5	16-8	--	1-0
Career	79-23	56-13	13-11	31-9	18-4	7-0	---	---	---	62-31	49-22	12-9	25-13	8-1	8-7



TAYLOR RUSSO

5-4 | SO - 1L | Deerfield Beach, Fla.

SEC All-Freshman (2017)

As a Freshman

Spring 2017:

Named to the SEC All-Freshman team ... Posted a 24-11 record in singles with five wins over ranked opponents ... Battled back to clinch the match vs. No. 5 Texas Tech to win the Blue Gray Championships ... Defeated No. 28 Katherine Ip (Rice) 3-6, 6-4, 6-2 ... Clinched seven matches ... Led the team with 29 wins in doubles ... Had eight wins over ranked opponents including No. 4 Caroline Brinson/Ellen Perez vs. Georgia at the SEC Championship ... Clinched the doubles point at five matches ... Earned SEC Freshman of the Week honors twice

Fall 2016:

Preseason No. 27 in doubles with partner Allie Michaud ... Competed in the 2016 Riviera/ITA Women's All-American with teammate Allie Michaud ... Advanced to the main draw round of 16 after battling through the consolation bracket of the Women's All-American ... Led the team with 11 doubles victories during the fall including two wins over ranked opponents.

Prior to Auburn

Ranked the No. 12 recruit in the United States ... No. 2 ranked player in the Southeast and top-ranked player in the state of Florida ... Advanced to the finals of the 2016 Hard Court Nationals in doubles ... Won the Level 2 National Selection in February 2016 ... 2015 Florida Level 3 State Doubles Champion ... 2015 National Selection Level 2 Doubles Champion and 2015 16s National Clay and hard Court Doubles Champion ... Finished 9-2 at the National Clay Courts 18s and made the 2015 18s National Hard Court Sweet 16 as an individual.

Personal

Daughter of Shastine and Eddie Russo ... Has two siblings, Shannon (24) and Dante (14).

RUSSO'S RESULTS

SINGLES

Year	Overall	Dual	SEC	No. 1	No. 2	No. 3	No. 4	No. 5	No. 6
2016-17	24-11	20-6	7-4	--	3-1	17-5	--	--	--
Career	24-11	20-6	7-4	--	3-1	17-5	--	--	--

DOUBLES

Overall	Dual	SEC	No. 1	No. 2	No. 3
29-16	17-10	3-7	17-10	--	--
29-16	17-10	3-7	17-10	--	--



CAROLINE TURNER

5-6 | JR - 2L | Highland Park, Texas

As a Sophomore:

Spring 2017:

Finished with an 11-10 record in singles and 16-8 record in doubles ... Clinched three consecutive matches vs. Troy, Alabama A&M and Mercer ... Paired with Georgia Axon for a 15-7 ... Defeated No. 28 Wendy Zhang/Lindsey Hodge (Rice) ... Clinched the doubles point in two matches including vs. DePaul at the NCAA South Regional

Fall 2016:

Finished the fall with a 5-5 singles record ... Finished third in the Flight 2B bracket of the Rice Invite ... Advanced to the consolation quarterfinals of the 2016 USTA/ITA Southern Regional ... Paired with freshman Georgie Axon to advance to the finals of the doubles main draw at the Rice Invite ... Finished the fall with a 3-2 record in doubles, including a 2-0 record over ranked opponents.

As a Freshman

Spring 2016:

Finished the spring with an 18-17 record, playing mostly out of the No. 6 spot ... clinched matches against No. 9 LSU (Mar. 5) and No. 51 Alabama (Apr. 1) ... Partnered with Alannah Griffin and Paula de Man to post a 13-18 record in doubles.

Fall 2015:

Finished the fall with a 6-6 record ... Won the Mercer Bears Gridiron Invitational in singles ... Teamed up with fellow freshman Alannah Griffin in doubles and posted a 7-2 record and won the Mercer Bears Gridiron Invitational.

Prior to Auburn

Was a 5-star recruit according to TennisRecruiting.net ... Was ranked as high as 25th nationally and was No. 1 in Texas and Gulf States region ... Won over 300 Junior USTA matches ... Earned two Silver Balls and one Bronze Ball from National USTA events ... Won the Barbados ITF Singles and Doubles title ... Winner of a National Open event in both singles and doubles in Oklahoma City ... Was the Texas Grand Slam Winner for G16 and a finalist for G18 in 2014 ... Represented Texas in Intersectional events and twice represented Texas in the Junior Fed Cup ... Trained with coach Robert Landsorp and recently with Harold Solomon in Fort Lauderdale, Fla.

Personal

Daughter of Mary Beth and Chris Turner ... Has two brothers, Ryan and Patrick ... Majoring in nutrition science

TURNER'S RESULTS

SINGLES

Year	Overall	Dual	SEC	No. 1	No. 2	No. 3	No. 4	No. 5	No. 6
2015-16	18-17	11-10	5-7	---	---	---	1-0	1-0	9-10
2016-17	11-10	6-5	2-2	--	--	--	--	2-0	4-5
Career	29-27	17-15	7-9	---	---	---	1-0	3-0	13-15

DOUBLES

Year	Overall	Dual	SEC	No. 1	No. 2	No. 3
2015-16	13-18	5-14	3-9	---	1-4	4-10
2016-17	16-8	13-6	3-2	--	2-1	11-5
Career	29-26	18-20	6-11	---	3-5	15-15



SINGLES	Overall	Dual	Tour	SEC	1	2	3	4	5	6	vs. Nat'l	vs. Reg'l
Georgie Axon	26-11	17-7	9-4	4-4	—	—	2-0	8-6	4-1	3-0	5-1	0-0
Andie Dikosavljevic	20-12	16-8	4-4	5-3	4-3	12-5	—	—	—	—	7-11	0-0
Sarah Beth Dolinger	0-4	0-2	0-2	0-0	—	—	0-1	—	—	0-1	0-0	0-0
Alannah Griffin	18-11	14-7	4-4	4-4	—	—	1-1	4-4	4-2	5-0	1-1	0-0
Alizee Michaud	33-13	23-9	10-4	6-7	14-7	9-2	—	—	—	—	14-13	0-0
Reka Muller	1-0	1-0	0-0	0-0	—	—	—	—	—	1-0	0-0	0-0
Taylor Russo	24-11	20-6	4-5	7-4	—	3-1	17-5	—	—	—	5-7	0-0
Caroline Turner	11-10	6-5	5-5	2-2	—	—	—	—	2-0	4-5	0-0	0-0
Roos van der Zwaan	14-11	14-11	0-0	5-5	—	—	—	3-2	6-6	5-3	1-1	0-0
Totals	147-83	111-55	36-28	33-29	18-10	24-8	20-7	15-12	16-9	18-9	33-34	0-0
Percentage	.639	.669	.562	.532	.643	.750	.741	.556	.640	.667	.493	.000

DOUBLES	Overall	Dual	Tour	SEC	1	2	3	vs. Nat'l	vs. Reg'l
Alizee Michaud/Taylor Russo	22-12	16-8	6-4	3-5	16-8	—	—	8-7	0-0
Georgie Axon/Caroline Turner	15-7	12-5	3-2	3-1	—	2-1	10-4	2-1	0-0
Georgie Axon/Alannah Griffin	1-4	0-1	1-3	0-1	—	—	0-1	0-0	0-0
Alannah Griffin/Alizee Michaud	2-2	0-0	2-2	0-0	—	—	—	0-0	0-0
Andie Dikosavljevic/Taylor Russo	4-3	0-2	4-1	0-2	0-2	—	—	0-2	0-0
Georgie Axon/Taylor Russo	2-1	0-0	2-1	0-0	—	—	—	0-0	0-0
Reka Muller/Roos van der Zwaan	4-2	4-2	0-0	0-0	1-0	1-0	2-2	0-0	0-0
Andie Dikosavljevic/Alannah Griffin	15-13	15-13	0-0	4-7	—	13-13	2-0	1-6	0-0
Sarah Beth Dolinger/Mark Katherine Lewis	1-0	1-0	0-0	0-0	—	—	1-0	0-0	0-0
Alannah Griffin/Taylor Russo	1-0	1-0	0-0	0-0	1-0	—	—	0-0	0-0
Georgie Axon/Roos van der Zwaan	3-1	3-1	0-0	0-0	—	1-0	2-1	0-0	0-0
Alizee Michaud/Caroline Turner	1-0	1-0	0-0	0-0	—	—	1-0	0-0	0-0
Alannah Griffin/Caroline Turner	0-1	0-1	0-0	0-1	—	—	0-1	0-0	0-0
Georgie Axon/Reka Muller	0-2	0-2	0-0	0-2	—	—	0-2	0-1	0-0
Totals	71-48	53-35	18-13	10-19	18-10	17-14	18-11	11-17	0-0
Percentage	.597	.602	.581	.345	.643	.548	.621	.393	.000

TEAM MATCH-BY-MATCH

Date	Opponent	Score	SINGLES						DOUBLES			Nat'l
			1	2	3	4	5	6	1	2	3	
Jan 21	Samford	W, 7-0	W	W	W	W	W	W	W	W	W	#15
Jan 22	ULM	W, 4-1	W	W	u	L	W	u	u	W	W	#15
Jan 22	Georgia State	W, 4-0	u	W	W	u	u	W	W	u	W	#15
Jan 27	Fresno State	W, 4-0	W	u	u	u	W	W	W	W	L	#15
Jan 29	#18 Southern California	W, 4-1	W	L	W	W	u	u	W	W	L	#15
Feb. 3	at Illinois	W, 4-1	W	u	W	L	W	u	W	W	u	#14
Feb 5	at Michigan State	W, 4-3	W	W	L	L	W	L	W	W	u	#14
Feb 14	vs. #7 Ohio State	L, 1-4	L	L	W	L	u	u	W	L	L	#14
Feb 14	vs. Yale	W, 4-1	W	W	W	u	L	u	u	W	W	#14
Feb 14	vs. #11 Georgia Tech	W, 4-2	W	u	W	W	L	W	L	L	W	#14
Feb 14	TROY	W, 7-0	W	W	W	W	W	W	W	L	W	#14
Feb 14	Alabama A&M	W, 6-1	W	W	L	W	W	W	W	W	W	#14
Feb 17	Mercer	W, 7-0	W	W	W	W	W	W	W	W	W	#11
Feb 17	Mercer	W, 4-1	u	W	u	W	W	L	W	W	W	#11
Feb 27	vs. Tulane	W, 4-0	u	W	W	u	u	W	W	u	W	#8
Feb 27	vs. Denver	W, 4-0	W	W	u	u	W	u	u	W	W	#8
Feb 27	vs. #5 Texas Tech	W, 4-2	W	W	W	W	u	L	u	L	L	#8
Mar 8	at #33 Mississippi State	W, 6-1	L	W	W	W	W	W	W	W	u	#6
Mar 10	#16 Tennessee	W, 4-0	W	W	u	u	u	W	u	W	W	#4
Mar 12	#13 Georgia	L, 1-4	W	L	u	u	L	L	u	L	L	#4
Mar 17	at #22 Texas A&M	L, 1-4	L	L	u	L	u	L	L	W	W	#5
Mar 19	at #27 LSU	L, 3-4	L	L	W	L	W	W	L	L	u	#5
Mar 24	#8 Vanderbilt	L 2-5	L	W	L	L	W	L	L	u	L	#11
Mar 26	#13 Kentucky	L, 3-4	L	W	W	L	L	W	L	u	L	#11
Mar 31	#13 South Carolina	W, 4-3	W	W	W	W	L	L	L	L	u	#12
Apr 2	#1 Florida	L, 0-4	u	L	L	L	u	u	W	L	L	#12
Apr 7	at #38 Alabama	L, 3-4	L	W	L	W	L	W	u	L	L	#12
Apr 12	at #27 Ole Miss	W, 4-0	u	W	W	u	u	W	W	W	W	#11
Apr 14	Missouri	W, 4-1	u	W	W	u	W	W	L	L	u	#11
Apr 16	#18 Arkansas	L, 2-4	W	L	u	L	L	W	L	L	u	#11
Apr 20	vs. #14 Arkansas	W, 4-3	W	W	L	L	L	W	L	W	W	#12
Apr 21	vs. #4 Georgia	W, 4-1	L	u	W	W	u	W	W	L	W	#12
Apr 22	vs. #1 Florida	L, 2-4	L	W	L	W	L	u	u	L	L	#12
May 12	DePaul	W, 4-0	u	W	W	W	u	u	W	u	W	#11
May 13	#37 Florida State	W, 4-2	u	W	W	W	W	L	L	W	L	#11
May 19	at #6 Texas Tech	L, 2-4	L	L	u	L	W	L	W	L	W	#11



2017 MATCH-BY-MATCH RESULTS

No. 15 Auburn 7, Samford 0 • Jan 21 • AUBURN, Ala.

Doubles

Pos.	Name (School)	Score
1.	#25 Michaud/Russo (AU) def. Gerlach/Hepp (SAM)	6-4
2.	Zwaan/Muller (AU) def. Wood /Beltrame (SAM)	6-2
3.	Griffin/Dikosavljevic (AU) def. Pool/Jupp (SAM)	6-3

Order of Finish: 2,3,1

Singles

Pos.	Name (School)	Score
1.	#13 Michaud (AU) def. Wood (SAM)	6-2, 6-2
2.	#101 Dikosavljevic (AU) def. Gerlach (SAM)	6-0, 6-1
3.	Russo (AU) def. Pool (SAM)	6-1, 6-2
4.	Griffin (AU) def. Beltrame (SAM)	6-2, 6-4
5.	Zwaan (AU) def. de Villiers (SAM)	6-1, 6-1
6.	Axon (AU) def. Hepp (SAM)	6-2, 6-1

Order of Finish: 5,1,2,6,3,4

No. 15 Auburn 4, ULM 1 • Jan. 22 • AUBURN, Ala..

Doubles

Pos.	Name (School)	Score
1.	Michaud/Muller (AU) vs. Andrei/Horakova (498)	3-4, unfinished
2.	Dikosavljevic/Griffin (AU) def. Grigoriu/Snita (498)	6-0, 6-1
3.	#31 Axon/Turner (AU) def. Stanciu/Mylonas (498)	6-2

Order of Finish: 2,3

Singles

Pos.	Name (School)	Score
1.	#13 Alizee Michaud (AU) def. Andrei, Stefana (498)	7-6 (8-6), 6-2
2.	#101 Andie Dikosavljevic (AU) def. Villar, Patricia (498)	6-0, 6-4
3.	Roos van der Zwaan (AU) vs. Mylonas, Tiffany (498)	4-6, 6-2, 3-1, u
4.	Horakova, Petra (498) def. Alannah Griffin (AU)	6-2, 6-3
5.	Georgie Axon (AU) def. Grigoriu, Madalina (498)	7-6 (7-2), 6-2
6.	Caroline Turner (AU) vs. Snita, Karolina (498)	6-4, 3-1, u

Order of Finish: 4,2,1,5

No. 15 Auburn 4, Georgia State 0 • Jan. 22 • AUBURN, Ala.

Doubles

Pos.	Name (School)	Score
1.	#25 Michaud/Russo (AU) def. Rehse/Muminovic (GSU)	6-3
2.	Zwaan/Muller (AU) vs. Taluyenko/Kamoe (GSU)	4-4, u
3.	Dikosavljevic/Griffin (AU) def. Ramirez/Grosheva (GSU)	6-3

Order of Finish: 3,1

Singles

Pos.	Name (School)	Score
1.	#101 Dikosavljevic (AU) vs. Kristin Rehse (GSU)	7-6 (7-2), 3-1, u
2.	#13 Alizee Michaud (AU) def. Daniela Ramirez (GSU)	7-6 (7-1), 6-2
3.	Taylor Russo (AU) def. Tarani Kamoe (GSU)	6-0, 6-1
4.	Alannah Griffin (AU) vs. Damira Muminovic (GSU)	6-3, 5-4, u
5.	Roos van der Zwaan (AU) vs. Arina Taluyenko (GSU)	6-1, 0-6, 4-2, u
6.	Georgie Axon (AU) def. Ilona Golynger (GSU)	6-1, 6-0

Order of Finish: 6,3,2

No. 15 Auburn 4, Fresno State 0 • Jan. 27 • AUBURN, Ala.

Doubles

Pos.	Name (School)	Score
1.	#25 Michaud/Russo (AU) def. Noble/Triebe (FS)	6-2
2.	Dikosavljevic/Griffin (AU) def. #50 Stloukalova/Lawson (FS)	7-6(7-5)
3.	Wilson/Galina (FS) def. Reka Muller/Roos van der Zwaan (AU)	6-4

Order of Finish: 1,3,2

Singles

Pos.	Name (School)	Score
1.	#13 Alizee Michaud (AU) def. Katerina Stloukalova (FS)	6-4, 6-2
2.	#101 Andie Dikosavljevic (AU) vs. Galina Bykova (FS)	4-6, 3-4, u
3.	Taylor Russo (AU) vs. Emma Wilson (FS)	3-6, 2-5, u
4.	Alannah Griffin (AU) vs. Juliane Triebe (FS)	6-1, 3-6, 0-0, u
5.	Roos van der Zwaan (AU) def. Georgia Lawson (FS)	6-1, 7-5
6.	Georgie Axon (AU) def. Olivia Noble (FS)	6-2, 6-2

Order of Finish: 6,1,5

No. 15 Auburn 4, #18 Southern Cal 1 • Jan. 29 • AUBURN, Ala.

Doubles

Pos.	Name (School)	Score
1.	#25 Michaud/Russo (AU) def. #18 Katz/Smith (USC)	6-4
2.	Dikosavljevic/Griffin (AU) def. Failla/Valdes (USC)	7-6 (8-6)
3.	Kulikov/Westby (USC) def. Muller/Zwaan (AU)	6-2

Order of Finish: 3,1,2

Singles

Pos.	Name (School)	Score
1.	#13 Alizee Michaud (AU) def. #56 Zoe Katz (USC)	6-4, 6-2
2.	Gabby Smith (USC) def. #101 Andie Dikosavljevic (AU)	2-6, 6-2, 6-1
3.	Alannah Griffin (AU) def. #46 Jessica Failla (USC)	6-2, 7-6 (7-4)
4.	Roos van der Zwaan (AU) def. #52 Madison Westby (USC)	6-3, 6-3
5.	Georgie Axon (AU) vs. Angela Kulikov (USC)	5-7, 6-1, 2-1, u
6.	Caroline Turner (AU) vs. Sydney Van Alphen (USC)	6-2, 2-6, 2-3, u

Order of Finish: 1,4,2,3

No. 14 Auburn 4, Illinois 1 • Feb 3 • Urbana, Ill.

Doubles

Pos.	Name (School)	Score
1.	Michaud/Russo (AU) def. Kwong/Vias (ILL)	6-4
2.	Griffin/Dikosavljevic (AU) def. Baillon/Switkes (ILL)	6-4
3.	Casati/Novak (ILL) vs. Muller/Axon (AU)	5-3, u

Order of Finish: 1,2

Singles

Pos.	Name (School)	Score
1.	Alizee Michaud (AU) def. Louise Kwong (ILL)	7-5, 1-6, 6-1
2.	Alexis Casati (ILL) vs. Andie Dikosavljevic (AU)	3-6, 7-5, 4-4, u
3.	Taylor Russo (AU) def. Jaclyn Switkes (ILL)	6-3, 2-6, 6-4
4.	Madie Baillon (ILL) def. Roos van der Zwaan (AU)	7-6, 6-1
5.	Georgie Axon (AU) def. Daniela Novak (ILL)	6-2, 6-2
6.	Jade Hilton (ILL) vs. Caroline Turner (AU)	6-2, 6-7, 2-1, u

Order of Finish: 5,4,1,3

No. 14 Auburn 4, Michigan State 3 • Feb 5 • AUBURN, Ala.

Doubles

Pos.	Name (School)	Score
1.	#25 Russo/Michaud (AU) def. Faulkner/Chua (MSU)	6-2
2.	Dikosavljevic/Griffin (AU) def. Metcalf/Nguyen (MSU)	6-2
3.	Memije/Trouillot (MSU) vs. Muller/Axon (AU)	3-4, u

Order of Finish: 1,2

Singles

Pos.	Name (School)	Score
1.	#13 Alizee Michaud (AU) def. Erin Faulkner (MSU)	7-6, 6-1
2.	Taylor Russo (AU) def. Aslina Chua (MSU)	6-3, 6-1
3.	Emily Metcalf (MSU) def. Alannah Griffin (AU)	6-2, 2-6, 6-1
4.	Davina Nguyen (MSU) def. Roos van der Zwaan (AU)	4-6, 6-3, 6-2
5.	Georgie Axon (AU) def. Lexi Baylis (MSU)	7-5, 7-5
6.	Athena Trouillot (MSU) def. Caroline Turner (AU)	6-1, 6-4

Order of Finish: 2,1,6,3,4,5

No. 7 Ohio State, No 14 Auburn 1 • Feb. 14 • Rocky Hill, Conn.

Doubles

Pos.	Name (School)	Score
1.	#6 Michaud/Russo (AU) def. Niehaus/Sanfred (OSU)	6-4
2.	Di Lorenzo/Kowase (OSU) def. #37 Griffin/Dikosavljevic (AU)	6-2
3.	Angeles Paz/Sneed (OSU) def. #31 Axon/Turner (AU)	6-3

Order of Finish: 2,1,3

Singles

Pos.	Name (School)	Score
1.	#1Di Lorenzo (OSU) def. #28 Alizee Michaud (AU)	6-2, 6-1
2.	#55 Anna Sanfred (OSU) def. Andie Dikosavljevic (AU)	6-2, 7-5
3.	#98 Taylor Russo (AU) def. #68 Gabriella De Santis (OSU)	6-1, 6-3
4.	Sandy Niehaus (OSU) def. #120 Alannah Griffin (AU)	6-1, 7-5
5.	#112 Zwaan (AU) vs. #84 Miho Kowase (OSU)	6-3, 1-6, 0-1, u
6.	Georgie Axon (AU) vs. Ferny Angeles Paz (OSU)	5-7, 2-3, u

Order of Finish: 1,3,2,4

2017 MATCH-BY-MATCH RESULTS



No. 14 Auburn 4, Yale 1 • Feb. 14 • Rocky Hill, Conn.

Doubles		
Pos.	Name (School)	Score
1.	#6 Russo/Michaud (AU) vs. Finke/Zordani (YALE)	4-5, u
2.	#37 Griffin/Dikosavljevic (AU) def. Jiang/Lynch (YALE)	6-4
3.	#31 Axon/Turner (AU) def. Dhingra/Yang (YALE)	6-1
Order of Finish: 3,2		
Singles		
Pos.	Name (School)	Score
1.	#28 Alizee Michaud (AU) def. Carol Finke (YALE)	6-0, 6-1
2.	Andie Dikosavljevic (AU) def. Tina Jiang (YALE)	6-3, 6-3
3.	#98 Taylor Russo (AU) def. Amy Yang (YALE)	7-5, 6-2
4.	#120 Alannah Griffin (AU) vs. Valerie Shklover (YALE)	5-7, 5-4, u
5.	E. Zordani (YALE) def. #112 Roos van der Zwaan (AU)	6-3, 6-4
6.	Georgie Axon (AU) vs. Caroline Lynch (YALE)	6-3, 6-5, u
Order of Finish: 1,2,5,3		

No. 14 Auburn 4, No. 11 Georgia Tech 2 • Feb. 14 • Rocky Hill, Conn.

Doubles		
Pos.	Name (School)	Score
1.	Russo/Griffin (AU) def. Korta/Stravroulaki (MER)	6-1
2.	Axon/van der Zwaan (AU) def. Sovic/Sidor (MER)	6-1
3.	Michaud/Turner (AU) def. Mottet/Cesarini (MER)	6-0
Order of Finish: 3,2,1		
Singles		
Pos.	Name (School)	Score
1.	#98 Taylor Russo (AU) vs. Katia Stravroulaki (MER)	6-3, 3-6, 1-1, u
2.	#28 Alizee Michaud (AU) def. Grace Korta (MER)	6-4, 6-4
3.	#120 Alannah Griffin (AU) vs. Katie Sidor (MER)	4-6, 5-2, u
4.	#112 Roos van der Zwaan (AU) def. Marie Mottet (MER)	6-1, 6-0
5.	Caroline Turner (AU) def. Haley Powell (MER)	6-2, 6-2
6.	Andrea Peteu (MER) def. Sarah Beth Dolinger (AU)	6-3, 6-1
Order of Finish: 4,6,5,2		

No. 14 Auburn 7, Troy 0 • Feb. 14 • AUBURN, Ala.

Doubles		
Pos.	Name (School)	Score
1.	#6 Michaud/Russo (AU) def. Seizer/Rodriguez (TROY)	7-5
2.	Ohta/Karaky (TROY) def. #31 Turner/Axon (AU)	6-1
3.	Muller/van der Zwaan (AU) def. Xue/Herlina (TROY)	7-5
Order of Finish: 2,1,3		
Singles		
Pos.	Name (School)	Score
1.	#28 Alizee Michaud (AU) def. Hannah Seizer (TROY)	6-3, 6-3
2.	Andie Dikosavljevic (AU) def. Jiayuan Xue (TROY)	3-6, 6-2, 6-0
3.	Georgie Axon (AU) def. Sanae Ohta (TROY)	6-3, 6-4
4.	#120 Alannah Griffin (AU) def. Efriliya Herlina (TROY)	6-0, 6-4
5.	#112 van der Zwaan (AU) def. Nancy Karaky (TROY)	7-6 (7-5), 6-0
6.	Caroline Turner (AU) def. Luisa Ferrauti (TROY)	6-4, 6-1
Order of Finish: 1,4,6,5,3,2		

No. 14 Auburn, 6, Alabama A&M 1 • Feb. 14 • AUBURN, Ala.

Doubles		
Pos.	Name (School)	Score
1.	Muller/van der Zwaan (AU) def. Hollos/Khalid (AA&M)	6-2
2.	#31 Turner/Axon (AU) def. Smith/Gutierrez (AA&M)	6-0
3.	Dolinger/Lewis (AU) def. Williams/Lawson (AA&M)	6-1
Order of Finish: 2,3,1		
Singles		
Pos.	Name (School)	Score
1.	Dikosavljevic (AU) def. Virag Hollos (AA&M)	6-7, 6-0, 1-0 (10-3)
2.	#28 Alizee Michaud (AU) def. Beatriz Gutierrez (AA&M)	6-4, 6-1
3.	Rida Khalid (AA&M) def. Dolinger (AU)	6-7, 7-6 (7-5), 1-0 (13-11)
4.	#112 Roos van der Zwaan (AU) def. Shrarre Smith (AA&M)	6-0, 6-0
5.	Caroline Turner (AU) def. Alyssa Williams (AA&M)	6-0, 6-0
6.	Reka Muller (AU) def. Jazmine Lawson (AA&M)	6-0, 6-0
Order of Finish: 4,6,5,2,1,3		

No. 11 Auburn 7, Mercer 0 • Feb. 17 • AUBURN, Ala.

Doubles		
Pos.	Name (School)	Score
1.	#8 Michaud/Russo (AU) def. Korta/Stravroulaki (MER)	7-5
2.	#31 Axon/Turner (AU) def. Sidor/Sovic (MER)	7-6 (7-1)
3.	Muller/van der Zwaan (AU) def. Powell/Mottet (MER)	6-0
Order of Finish: 3,1,2		
Singles		
Pos.	Name (School)	Score
1.	#28 Alizee Michaud (AU) def. Katia Stravroulaki (MER)	6-1, 6-0
2.	#98 Taylor Russo (AU) def. Grace Korta (MER)	6-2, 7-5
3.	Georgie Axon (AU) def. Katie Sidor (MER)	6-1, 6-2
4.	#120 Alannah Griffin (AU) def. Marie Mottet (MER)	6-1, 6-1
5.	#112 van der Zwaan (AU) def. H. Powell (MER)	7-5, 4-6, 1-0 (10-6)
6.	Caroline Turner (AU) def. Anna Sovic (MER)	6-2, 6-1
Order of Finish: 1,4,6,3,2,5		

No. 11 Auburn 4, Mercer 1 • Feb. 17 • AUBURN, Ala.

Doubles		
Pos.	Name (School)	Score
1.	No. 36 Burgmans/de Man (AU) vs. No. 12 Cutura/Maddox (PU)	5-2, uf
2.	No. 22 Stefani/Runglerdkri (PU) def. Michaud/Muller (AU)	by walkover
3.	Gulbe/Milovanovic (PU) def. Dikosavljevic/Griffin (AU)	6-2
Order of Finish: 3		
Singles		
Pos.	Name (School)	Score
1.	No. 4 Luisa Stefani (PU) def. No. 32 Andie Dikosavljevic (AU)	6-2, 6-2
2.	Pleun Burgmans (AU) vs. Laura Gulbe (PU)	3-6, 6-1, 1-0, uf
3.	Alizee Michaud (AU) vs. Matea Cutura (PU)	4-6, 6-2, 2-0, uf
4.	Alannah Griffin (AU) vs. No. 114 Dzina Milovanovic (PU)	3-6, 6-3, 1-0, uf
5.	Apichaya Runglerdkri (PU) def. Paula de Man (AU)	7-5, 6-0
6.	Michaela Capannolo (PU) def. Caroline Turner (AU)	6-2, 6-3
Order of Finish: 1,6,5		

No. 8 Auburn 4, Tulane 0 • Feb. 27 • Montgomery, Ala.

Doubles		
Pos.	Name (School)	Score
1.	#15 Michaud/Russo (AU) def. Muller/Karagoz (TU)	6-1
2.	Griffin/Dikosavljevic (AU) vs. Alvaro/Atkinson (TU)	4-3, u
3.	Axon/van der Zwaan (AU) def. Klier/Sisti (TU)	6-2
Order of Finish: 1,3		
Singles		
Pos.	Name (School)	Score
1.	#36 Alizee Michaud (AU) vs. Naz Karagoz (TU)	6-3, 3-6, 3-4, u
2.	Andie Dikosavljevic (AU) def. Kyla Klier (TU)	6-3, 6-4
3.	#99 Taylor Russo (AU) def. Sade Atkinson (TU)	7-6, 7-6
4.	Georgie Axon (AU) vs. Ivone Alvaro (TU)	6-3, 3-6, 3-5, u
5.	Alannah Griffin (AU) vs. Elena Muller (TU)	4-6, 6-4, 1-2, u
6.	Roos van der Zwaan (AU) def. Christina Sisti (TU)	6-0, 6-0
Order of Finish: 6,3,2		

No. 8 Auburn 4, Denver 0 • Feb. 27 • Montgomery, Ala.

Doubles		
Pos.	Name (School)	Score
1.	#15 Michaud/Russo (AU) vs. #11 O'Loughlin/Slattery (UD)	4-5, u
2.	Dikosavljevic/Griffin (AU) def. Mok/Barnhill (UD)	6-1
3.	Axon/van der Zwaan (AU) def. Mboko/Radosevic (UD)	7-5
Order of Finish: 2,3		
Singles		
Pos.	Name (School)	Score
1.	#36 Alizee Michaud (AU) def. #96 Bianca Mok (UD)	3-6, 6-3, 6-2
2.	Andie Dikosavljevic (AU) def. Julia O'Loughlin (UD)	7-6, 7-5
3.	#99 Taylor Russo (AU) vs. Maureen Slattery (UD)	1-6, 6-1, 6-5, u
4.	Georgie Axon (AU) vs. Gracia Mboko (UD)	7-5, 4-6, 2-0, u
5.	Alannah Griffin (AU) def. Sonja Radosevic (UD)	6-3, 6-2
6.	Roos van der Zwaan (AU) vs. Arisha Ladhani (UD)	3-2, u
Order of Finish: 5,2,1		



2017 MATCH-BY-MATCH RESULTS

No. 8 Auburn 4, No. 5 Texas Tech 2 • Feb. 27 • Montgomery, Ala.

Doubles

Pos.	Name (School)	Score
1.	#15 Michaud/Russo (AU) vs. #23 Dvorak/Federici (TTU)	4-5, u
2.	#33 Maltby/ Talaba (TTU) def. Dikosavljevic/Griffin (AU)	7-5
3.	Cortina-Pou/Valenstein(TTU) def. Axon/van der Zwaan (AU)	6-4

Order of Finish: 3,2

Singles

Pos.	Name (School)	Score
1.	#36 Alizee Michaud (AU) def. #11 Gabriela Talaba (TTU)	2-6, 6-3, 6-2
2.	Andie Dikosavljevic (AU) def. #32 Felicity Maltby (TTU)	6-0, 6-1
3.	#99 Taylor Russo (AU) def. Sarah Dvorak (TTU)	4-6, 6-0, 6-4
4.	Georgie Axon (AU) def. #106 Alex Valenstein (TTU)	6-2, 6-4
5.	Alannah Griffin (AU) vs. Sabrina Federici (TTU)	6-4, 4-6, 2-3, u
6.	Katelyn Jackson (TTU) def. Roos van der Zwaan (AU)	6-2, 6-2

Order of Finish: 2,6,4,1,3

No. 6 Auburn 6, No. 33 Mississippi State 1 • Mar. 8 • Starkville, Miss.

Doubles

Pos.	Name (School)	Score
1.	#15 Russo/Michaud (AU) def. #8 Rioux/Lee (MSU)	6-2
2.	Dikosavljevic/Griffin (AU) def. Lizariturry/Rentouli (MSU)	6-2
3.	Harrison/Vozniak (MSU) vs. Axon/van der Zwaan (AU)	5-3, u

Order of Finish: 2,1

Singles

Pos.	Name (School)	Score
1.	#73 Jasmine Lee (MSU) def. #36 Alizee Michaud (AU)	6-3, 6-3
2.	Andie Dikosavljevic (AU) def. Madison Harrison (MSU)	6-4, 7-6 (7-5)
3.	#99 Taylor Russo (AU) def. Lisa Rioux (MSU)	7-6 (8-6), 6-4
4.	Georgie Axon (AU) def. Anastasia Rentouli (MSU)	6-4, 7-6 (7-4)
5.	Alannah Griffin (AU) def. Khtystyna Vozniak (MSU)	2-6, 7-6 (8-6), 6-4
6.	Roos van der Zwaan (AU) def. Sara Lizariturry (MSU)	6-2, 5-7, 6-4

Order of Finish: 1,2,3,4,5,6

No. 4 Auburn 4, No. 16 Tennessee 0 • Mar. 10 • AUBURN, Ala.

Doubles

Pos.	Name (School)	Score
1.	#8 Michaud/Russo (AU) vs. #74 Lindl/Repic (UT)	4-3, u
2.	#67 Dikosavljevic/Griffin (AU) def. Hammond/Schuck (UT)	6-2
3.	#38 Turner/Axon (AU) def. Kermet/Riley (UT)	6-0

Order of Finish: 3,2

Singles

Pos.	Name (School)	Score
1.	#29 Alizee Michaud (AU) def. #51 Brittany Lindl (UT)	7-5, 6-1
2.	#102 Taylor Russo (AU) def. Sadie Hammond (UT)	6-0, 7-6 (7-1)
3.	#71 Andie Dikosavljevic (AU) vs. Eve Repic (UT)	3-6, 6-2, 2-0, u
4.	Georgie Axon (AU) vs. Johanna Silva (UT)	2-6, 4-2, u
5.	Alannah Griffin (AU) vs. Gabby Schuck (UT)	4-6, 5-1, u
6.	Roos van der Zwaan (AU) def. Kim Kermet (UT)	6-1, 6-1

Order of Finish: 6,1,2

No. 13 Georgia 4, No. 4 Auburn 1 • Mar. 12 • AUBURN, Ala.

Doubles

Pos.	Name (School)	Score
1.	#8 Michaud/Russo (AU) vs. Perez/Brinson (UGA)	3-3, u
2.	#58 Christofi/Shaffer (UGA) def. #67 Dikosavljevic/Griffin (AU)	6-1
3.	Gonzalez/Gould (UGA) def. #38 Axon/Turner (AU)	6-1

Order of Finish: 3,2

Singles

Pos.	Name (School)	Score
1.	#29 Alizee Michaud (AU) def. #55 Ellen Perez (UGA)	6-2, 6-3
2.	#18 Elena Christofi (UGA) def. #102 Taylor Russo (AU)	6-3, 7-5
3.	#71 A. Dikosavljevic (AU) vs. #63 K. Shaffer (UGA)	6-3, 4-6, 0-1, u
4.	Georgie Axon (AU) vs. #86 Caroline Brinson (UGA)	4-6, 2-5, u
5.	Maria Gonzalez (UGA) def. Alannah Griffin (AU)	6-2, 7-5
6.	Mariana Gould (UGA) def. Roos van der Zwaan (AU)	6-1, 6-2

Order of Finish: 6,1,5,2

No. 22 Texas A&M 4, No. 5 Auburn 1 • Mar. 17 • College Station, Tx.

Doubles

Pos.	Name (School)	Score
1.	#19 Bhosale/Pierson (A&M) def. #8 Michaud/Russo (AU)	6-2
2.	#67 Dikosavljevic/Griffin (AU) def. Gonzalez/Paalma (A&M)	6-3
3.	#38 Axon/Turner (AU) def. Olivares/Hristov (A&M)	7-6 (7-5)

Order of Finish: 2,1,3

Singles

Pos.	Name (School)	Score
1.	#44 Rachel Pierson (A&M) def. #29 Alizee Michaud (AU)	6-4, 6-4
2.	#85 R. Bhosale (A&M) def. #71 A. Dikosavljevic (AU)	4-6, 6-4, 6-2
3.	Saska Gavrilovska (A&M) vs. #102 Taylor Russo (AU)	4-6, 7-5, 2-1, u
4.	Domenica Gonzalez (A&M) def. Alannah Griffin (AU)	6-1, 6-1
5.	M. Olivares (A&M) vs. Georgie Axon (AU)	6-3, 6-7 (3-7), 3-0, u
6.	Tina Bokhua (A&M) def. Roos van der Zwaan (AU)	3-6, 6-2, 6-3

Order of Finish: 4,1,6,2

No. 27 LSU 4, No. 5 Auburn 4 • Mar. 19 • Baton Rouge, La.

Doubles

Pos.	Name (School)	Score
1.	#42 Costa/Foster (LSU) def. #8 Michaud/Russo (AU)	6-4
2.	Lewis/Weissmann (LSU) def. #67 Dikosavljevic/Griffin (AU)	6-1
3.	Golovin/Holloway (LSU) vs. Turner/Muller (AU)	5-4, u

Order of Finish: 2,1

Singles

Pos.	Name (School)	Score
1.	#39 Jade Lewis (LSU) def. #29 Alizee Michaud (AU)	7-6 (7-3), 6-4
2.	#116 Costa (LSU) def. #71 A. Dikosavljevic (AU)	6-1, 2-6, 6-2
3.	#102 Taylor Russo (AU) def. #83 Ryann Foster (LSU)	6-3, 4-6, 6-1
4.	Jessica Golovin (LSU) def. Alannah Griffin (AU)	6-4, 6-1
5.	Georgie Axon (AU) def. Becca Weissmann (LSU)	6-4, 6-2
6.	Roos van der Zwaan (AU) def. Abby Owens (LSU)	6-4, 6-3

Order of Finish: 6,4,5,2,1,3

No. 8 Vanderbilt 5, No. 11 Auburn 2 • Mar. 24 • AUBURN, Ala.

Doubles

Pos.	Name (School)	Score
1.	#8 Sharma/Smith (VU) def. Dikosavljevic/Russo (AU)	6-3
2.	Michaud/Muller (AU) vs. Kurtz/Campbell (VU)	5-3, u
3.	Contreras/Rosca (VU) def. Axon/Griffin (AU)	6-0

Order of Finish: 3,1

Singles

Pos.	Name (School)	Score
1.	#5 Astra Sharma (VU) def. #34 Alizee Michaud (AU)	6-3, 3-6, 6-3
2.	#78 A. Dikosavljevic (AU) def. #12 S. Campbell (VU)	6-2, 4-6, 7-5
3.	#93 Christina Rosca (VU) def. #85 Taylor Russo (AU)	5-7, 6-3, 6-1
4.	Emma Kurtz (VU) def. Georgie Axon (AU)	6-7 (3-7), 6-2, 7-5
5.	Roos van der Zwaan (AU) def. Georgina Sellyn (VU)	6-4, 6-4
6.	Fernanda Contreras (VU) def. Caroline Turner (AU)	7-6 (7-4), 6-3

Order of Finish: 5,6,1,3,2,4

No. 13 Kentucky 4, No. 11 Auburn 3 • Mar. 26 • AUBURN, Ala.

Doubles

Pos.	Name (School)	Score
1.	#4 Sutjiadi/Adachi (UK) def. Russo/Dikosavljevic (AU)	6-3
2.	Michaud/Muller (AU) vs. Parazinskaite/Chumney (UK)	5-4, u
3.	Fanning/Mikulskyte (UK) def. Griffin/Turner (AU)	6-2

Order of Finish: 3,1

Singles

Pos.	Name (School)	Score
1.	#19 Aldila Sutjiadi (UK) def. #34 Alizee Michaud (AU)	6-4, 6-3
2.	#78 A. Dikosavljevic (AU) def. #125 Akvile Parazinskaite (UK)	6-2, 6-2
3.	#85 Taylor Russo (AU) def. Mami Adachi (UK)	1-6, 7-5, 6-3
4.	Emily Fanning (UK) def. Georgie Axon (AU)	6-3, 3-6, 6-0
5.	J. Mikulskyte (UK) def. Roos van der Zwaan (AU)	6-7 (3-7), 7-5, 6-1
6.	Caroline Turner (AU) def. Morgan Chumney (UK)	5-7, 6-3, 6-3

Order of Finish: 2,1,3,4,6,5

2017 MATCH-BY-MATCH RESULTS



No. 12 Auburn 4, No. 13 S. Carolina 3 • Mar. 31 • Columbia, S.C.

Doubles

Pos.	Name (School)	Score
1.	Dailey/Berg (SC) def. #14 Russo/Michaud (AU)	6-4
2.	Folland/Martins (SC) def. Dikosavljevic/Griffin (AU)	6-3
3.	Muller/Axon (AU) vs. Horvit/Chinellato (SC)	4-5, u

Order of Finish: 2,1

Singles

Pos.	Name (School)	Score
1.	#78 A. Dikosavljevic (AU) def. #36 Ingrid Martins (SC)	6-4, 3-6, 7-5
2.	#34 Alizee Michaud (AU) def. #75 Mai Horvit (SC)	7-6, 3-6, 6-2
3.	#85 Taylor Russo (AU) def. Carolina Dailey (SC)	6-4, 6-3
4.	Georgie Axon (AU) def. Silvia Chinellato (SC)	2-6, 6-3, 7-6
5.	Hadley Berg (SC) def. Alannah Griffin (AU)	7-5, 6-0
6.	Brigit Folland (SC) def. Caroline Turner (AU)	6-0, 6-1

Order of Finish: 6,5,3,1,2,4

No. 1 Florida 4, No. 12 Auburn 0 • Apr. 2 • Gainesville, Fla.

Doubles

Pos.	Name (School)	Score
1.	#12 Michaud/Russo (AU) def. #9 Austin/Keegan (UF)	6-3
2.	#24 Danilina/Neel (UF) def. Dikosavljevic/Griffin (AU)	6-4
3.	#35 Kuhlman/Woolcock (UF) def. Muller/Axon (AU)	6-1

Order of Finish: 3,1,2

Singles

Pos.	Name (School)	Score
1.	#78 A. Dikosavljevic (AU) vs. #21 Belinda Woolcock (UF)	3-6, 3-4, u
2.	#15 Josie Kuhlman (UF) def. #34 Alizee Michaud (AU)	6-4, 6-0
3.	#16 Ingrid Neel (UF) def. #85 Taylor Russo (AU)	6-2, 6-4
4.	Brooke Austin (UF) def. Georgie Axon (AU)	6-3, 6-0
5.	Alannah Griffin (AU) vs. #35 Kourtney Keegan (UF)	2-6, 1-5, u
6.	Roos van der Zwaan (AU) vs. #68 Spencer Liang (UF)	4-6, 2-3, u

Order of Finish: 4,2,3

No. 38 Alabama 4, No. 12 Auburn 3 • Apr. 7 • Tuscaloosa, Ala.

Doubles

Pos.	Name (School)	Score
1.	#7 Pothoff/Routliffe (UA) vs. #12 Michaud/Russo (AU)	5-4, u
2.	Saava/Daniell (UA) def. Dikosavljevic/Griffin (AU)	6-4
3.	Spielmann/Hinton (UA) def. Muller/Axon (AU)	6-3

Order of Finish: 3,2

Singles

Pos.	Name (School)	Score
1.	#23 Erin Routliffe (UA) def. #36 Andie Dikosavljevic (AU)	6-4, 4-6, 6-2
2.	#31 Alizee Michaud (AU) def. #121 Andie Daniell (UA)	3-6, 7-6, 6-4
3.	Danielle Spielmann (UA) def. #115 Taylor Russo (AU)	6-0, 7-5
4.	Georgie Axon (AU) def. Smith Hinton (UA)	6-3, 6-3
5.	Maddie Pothoff (UA) def. Roos van der Zwaan (AU)	6-7, 6-4, 6-3
6.	Caroline Turner (AU) def. Joanna Saava (UA)	6-1, 7-6

Order of Finish: 3,4,1,2,6,5

No. 11 Auburn 4, No. 27 Ole Miss 0 • Apr. 12 • Oxford, Miss.

Doubles

Pos.	Name (School)	Score
1.	#16 Michaud/Russo (AU) def. #53 Hartono/Bortles (UM)	6-3
2.	Dikosavljevic/Griffin (AU) def. Suk/Khairudinova (UM)	6-3
3.	Turner/Axon (AU) def. Stevens/Janatova (UM)	5-4

Order of Finish: 1,2

Singles

Pos.	Name (School)	Score
1.	#38 A. Hartono (UM) vs. #39 Andie Dikosavljevic (AU)	6-1, 4-6, u
2.	#26 Alizee Michaud (AU) def. #77 Natalie Suk (UM)	6-1, 6-2
3.	Taylor Russo (AU) def. Zalina Khairudinova (UM)	6-4, 6-1
4.	Anna Vrbenska (UM) vs. Georgie Axon (AU)	4-6, 1-3, u
5.	Alexa Bortles (UM) vs. Roos van der Zwaan (AU)	0-6, 6-2, 0-2, u
6.	Alannah Griffin (AU) def. Tereza Janatova (UM)	6-3, 6-1

Order of Finish: 2,6,3

No. 11 Auburn 4, Missouri 1 • Apr. 14 • AUBURN, Ala.

Doubles

Pos.	Name (School)	Score
1.	#17 Santos/Ismail (MIZ) def. #16 Michaud/Russo (AU)	6-1
2.	Middlebrook/Spearman (MIZ) def. Dikosavljevic/Griffin (AU)	6-1
3.	#43 Axon/Turner (AU) vs. Raley/Schroeder (MIZ)	3-5, u

Order of Finish: 1,2

Singles

Pos.	Name (School)	Score
1.	#39 A. Dikosavljevic (AU) vs. Santos (MIZ)	3-6, 6-4, 2-5, u
2.	#26 Alizee Michaud (AU) def. T. Schroeder (MIZ)	7-6 (7-3), 7-6 (7-5)
3.	Taylor Russo (AU) def. Cassidy Spearman (MIZ)	6-3, 7-5
4.	Georgie Axon (AU) vs. Mackenzy Middlebrook (MIZ)	7-6 (8-6), 4-3, u
5.	Roos van der Zwaan (AU) def. Amina Ismail (MIZ)	6-2, 6-2
6.	Alannah Griffin (AU) def. Clare Raley (MIZ)	7-5, 6-4

Order of Finish: 5,3,6,2

No. 18 Arkansas 4, No. 11 Auburn 2 • Apr. 16 • AUBURN, Ala.

Doubles

Pos.	Name (School)	Score
1.	Pairone/Jeanjean (AR) def. #16 Michaud/Russo (AU)	6-1
2.	Oparenovic/Jurasic (AR) def. Griffin/Dikosavljevic (AU)	6-2
3.	#43 Turner/Axon (AU) vs. Hudson/Arakawa (AR)	3-4, u

Order of Finish: 1,2

Singles

Pos.	Name (School)	Score
1.	#39 A. Dikosavljevic (AU) def. #49 Shannon Hudson (AR)	6-4, 6-4
2.	#92 Ana Oparenovic (AR) def. #26 Alizee Michaud (AU)	6-3, 4-6, 6-4
3.	Taylor Russo (AU) vs. #114 Léolia Jeanjean (AR)	6-4, 2-6, 4-3, u
4.	Giulia Pairone (AR) def. Georgie Axon (AU)	6-4, 6-2
5.	Mia Jurasic (AR) def. Roos van der Zwaan (AU)	6-2, 6-0
6.	Alannah Griffin (AU) def. Natsuho Arakawa (AR)	6-3, 6-2

Order of Finish: 5,6,1,4,2

No. 12 Auburn 4, No. 14 Arkansas 3 • Apr. 20 • Nashville, Tenn.

Doubles

Pos.	Name (School)	Score
1.	#60 Jeanjean/Pairone (AR) def. #18 Russo/Michaud (AU)	6-3
2.	Dikosavljevic/Griffin (AU) def. Jurasic/Oparenovic (AR)	7-6 (7-5)
3.	#46 Axon/Turner (AU) def. Hudson/Arakawa (AR)	7-5

Order of Finish: 1,3,2

Singles

Pos.	Name (School)	Score
1.	#34 A. Dikosavljevic (AU) def. #43 S. Hudson (AR)	6-7 (8-10), 6-4, 7-5
2.	#26 Alizee Michaud (AU) def. #70 Ana Oparenovic (AR)	0-6, 6-2, 7-5
3.	#114 Léolia Jeanjean (AR) def. #124 Taylor Russo (AU)	6-1, 6-2
4.	Giulia Pairone (AR) def. Georgie Axon (AU)	6-1, 6-3
5.	Mia Jurasic (AR) def. Roos van der Zwaan (AU)	7-6 (7-0), 6-4
6.	Alannah Griffin (AU) def. Sasha Shkorupeieva (AR)	6-4, 6-1

Order of Finish: 3,4,6,5,2,1

No. 12 Auburn 4, No. 4 Georgia 1 • Apr. 21 • Nashville, Tenn.

Doubles

Pos.	Name (School)	Score
1.	#18 Russo/Michaud (AU) def. #4 Brinson/Perez (UGA)	6-3
2.	#34 Christofi/Shaffer (UGA) def. Dikosavljevic/Griffin (AU)	6-2
3.	#46 Axon/Turner (AU) def. Gould/Gonzalez (UGA)	6-1

Order of Finish: 3,2,1

Singles

Pos.	Name (School)	Score
1.	#21 Ellen Perez (UGA) def. #34 Andie Dikosavljevic (AU)	6-4, 6-1
2.	#14 Elena Christofi (UGA) vs. #26 A. Michaud (AU)	6-2, 4-6, 2-1, u
3.	#124 Taylor Russo (AU) def. #61 Kennedy Shaffer (UGA)	6-4, 6-2
4.	Georgie Axon (AU) def. #63 Caroline Brinson (UGA)	6-4, 6-3
5.	Marta Gonzalez (UGA) vs. Roos van der Zwaan (AU)	6-4, 5-4, u
6.	Alannah Griffin (AU) def. Mariana Gould (UGA)	7-5, 6-0

Order of Finish: 1,3,4,6



2017 MATCH-BY-MATCH RESULTS

No. 1 Florida 4, No. 12 Auburn 2 • Apr. 22 • Nashville, Tenn.

Doubles

Pos.	Name (School)	Score
1.	#17 Neel/Danilina (UF) vs. #18 Michaud/Russo (AU)	5-4, u
2.	#20 Keegan/Austin (UF) def. Dikosavljevic/Griffin (AU)	6-2
3.	#42 Kuhlman/Woolcock (UF) def. #46 Axon/Turner (AU)	6-3

Order of Finish: 2,3

Singles

Pos.	Name (School)	Score
1.	#6 Belinda Woolcock (UF) def. #34 Andie Dikosavljevic (AU)	6-2, 6-0
2.	#26 Alizee Michaud (AU) def. #16 Josie Kuhlman (UF)	6-3, 6-1
3.	#29 Ingrid Neel (UF) def. #124 Taylor Russo (AU)	4-6, 6-2, 6-2
4.	Georgie Axon (AU) def. Brooke Austin (UF)	7-6 (7-5), 2-6, 7-5
5.	#37 Anna Danilina (UF) def. Roos van der Zwaan (AU)	4-6, 7-5, 7-5
6.	#44 Kourtney Keegan (UF) vs. Alannah Griffin (AU)	6-3, 5-1, u

Order of Finish: 1,2,3,4,5

No. 11 Auburn 4, DePaul 0 • May 12 • AUBURN, Ala.

Doubles

Pos.	Name (School)	Score
1.	#14 Michaud/Russo (AU) def. Avgeri/Shupenia (DEP)	6-1
2.	Griffin/Dikosavljevic (AU) vs. Clousing/Lancranjan (DEP)	5-2, u
3.	#64 Turner/Axon (AU) def. Vladutu/Abbot (DEP)	6-3

Order of Finish: 1,3

Singles

Pos.	Name (School)	Score
1.	#17 A. Michaud (AU) vs. #109 Yuliya Shupenia (DEP)	4-6, 4-3, u
2.	#29 Andie Dikosavljevic (AU) def. Keisha Clousing (DEP)	6-3, 6-3
3.	#115 Taylor Russo (AU) def. Patricia Lancranjan (DEP)	6-3, 6-3
4.	Georgie Axon (AU) def. Ana Vladutu (DEP)	6-2, 6-1
5.	Alannah Griffin (AU) vs. Aspasia Avgeri (DEP)	6-2, 4-4, u
6.	Caroline Turner (AU) vs. Florence Abbot (DEP)	6-3, 4-4, u

Order of Finish: 4,2,3

No. 11 Auburn 4, No. 37 Florida State 2 • May 13 • AUBURN, Ala.

Doubles

Pos.	Name (School)	Score
1.	Garcia/Mikulski (FSU) def. #14 Michaud/Russo (AU)	7-6 (8-6)
2.	Dikosavljevic/Griffin (AU) def. Das/Rahmanparast (FSU)	6-4
3.	Castaneda/Schippers (FSU) def. #64 Axon/Turner (AU)	7-5

Order of Finish: 2,3,1

Singles

Pos.	Name (School)	Score
1.	#17 A. Michaud (AU) vs. G. Castaneda (FSU)	3-6, 7-6 (10-8), 2-0, u
2.	#29 Andie Dikosavljevic (AU) def. Nandini Das (FSU)	6-1, 6-2
3.	#115 Taylor Russo (AU) def. Julia Mikulski (FSU)	2-6, 6-1, 6-1
4.	Georgie Axon (AU) def. Daniela Schippers (FSU)	7-5, 7-5
5.	Alannah Griffin (AU) def. Andrea Garcia (FSU)	2-6, 6-2, 6-3
6.	Ariana Rahmanparast (FSU) def. Caroline Turner (AU)	6-3, 6-2

Order of Finish: 2,6,3,5,4

No. 6 Texas Tech 4, No. 11 Auburn 2 • May 19 • Athens, Ga.

Doubles

Pos.	Name (School)	Score
1.	#14 Michaud/Russo (AU) def. #26 Dvorak/Federici (TTU)	6-3
2.	#69 Gabriela/Maltby (TTU) def. Dikosavljevic/Griffin (AU)	6-2
3.	Turner/Axon (AU) def. Cortina-Pou/Valenstein (TTU)	7-5

Singles

Pos.	Name (School)	Score
1.	#9 Gabriela Talaba (TTU) def. #17 Alizee Michaud (AU)	4-6, 6-2, 6-0
2.	#58 Felicity Maltby (TTU) def. #29 Andie Dikosavljevic (AU)	6-1, 6-0
3.	Alex Valenstein (TTU) vs. Taylor Russo (AU)	6-2, 4-6, 3-1, u
4.	Sabrina Federici (TTU) def. Georgie Axon (AU)	7-5, 6-0
5.	Alannah Griffin (AU) def. Sarah Dvorak (TTU)	6-3, 6-2
6.	Katelyn Jackson (TTU) def. Caroline Turner (AU)	7-5, 6-2

SINGLE SEASON

Combined Victories

Player	No.	Year
1. Alizee Michaud.....	58	2017
2. Kim Brannon.....	57	1989
3. Anna Funderburk.....	56	1993
4. Alex Haney.....	55	2009
T5. Pleun Burgmans.....	54	2016
T5. Alex Haney.....	54	2008
T7: Taylor Russo.....	53	2017
T7. Melissa Koning.....	53	2008
T7. Nadia Smirnova.....	53	1993
T7. Alannah Griffin.....	53	2016
T7. Jackie Kasler.....	53	2013
12. Alex Haney.....	51	2008
13. Emily Flickinger.....	50	2013
14. Pleun Burgmans.....	48	2013
T15. Georgie Axon.....	47	2017
T15. Alizee Michaud....	47	2016
T15. Petra Bercik.....	47	2002
T15. Pleun Burgmans.....	47	2014

Singles Victories

Player	No.	Year
1. Kim Brannon.....	35	1989
2. Fani Chifchieva.....	34	2008
3. Alizee Michaud.....	33	2017
4. Alex Haney.....	30	2009
5. Pleun Burgmans.....	29	2016
T6. Anna Funderburk.....	28	1993
T6. Ali LaGrange.....	28	1996
T6. Alannah Griffin....	28	2016
T6. Fani Chifchieva.....	28	2007
10. Alex Haney.....	27	2007
T11: Georgie Axon.....	26	2017
T11. Alex Haney.....	26	2008
T11. Fani Chifchieva.....	26	2009
T11. Robin Sharp.....	26	1985
T15. Kristen Overton.....	25	1988
T15. Nadia Smirnova.....	25	1993
T15. Sue Watt.....	25	1986

Doubles Victories

Player	No.	Year
T1. Melissa Koning.....	29	2008
T1. Jen Pfeifler.....	29	2013
T1. Jackie Kasler.....	29	2013
T1. Pleun Burgmans.....	29	2015
T1: Taylor Russo.....	29	2017
T6. Pleun Burgmans.....	28	2014
T6. Emily Flickinger.....	28	2015
T6. Anna Funderburk.....	28	1993
T6. Nadia Smirnova.....	28	1993
T6. Emily Flickinger.....	28	2014
T6. Alex Haney.....	28	2008
T12. Petra Bercik.....	26	2002
T12. Pleun Burgmans.....	26	2013
T12. Pleun Burgmans.....	26	2016
T12. Alizee Michaud....	26	2016

CAREER RECORDS

Combined Victories

Player	No.	Years
1. Alex Haney.....	197	2005-09
2. Pleun Burgmans.....	195	2012-16
3. Fani Chifchieva.....	180	2006-10
4. Kim Brannon.....	179	1986-89
5. Emily Flickinger.....	166	2012-2015
6. Anna Funderburk.....	162	1989-1992
7. Jackie Kasler.....	157	2011-2014
8. Jen Pfeifler.....	143	2012-2015
T9. Whitney Chappell.....	141	2005-09
T9. Carolina Ramirez.....	141	2000-04
11. Sue Watt.....	126	1986-89
12. Petra Bercik.....	125	2001-05
13. Nadia Smirnova.....	124	1993-96
14. Sarah Suitor.....	120	2001-05
15. Kristen Overton.....	117	1987-89

Singles Victories

Player	No.	Years
1. Fani Chifchieva.....	109	2007-10
2. Alex Haney.....	104	2006-09
3. Anna Funderburk.....	95	1989-1992
4. Kim Brannon.....	94	1986-89
5. Pleun Burgmans.....	88	2012-2016
6. Kimberley Kozlowski.....	75	1993-96
T7. Sue Watt.....	74	1986-89
T7. Jackie Kasler.....	74	2010-2014
T9. Whitney Chappell.....	70	2006-09
T9. Sharon Mieres.....	70	1994-1997
11. Emily Flickinger.....	67	2011-2015
12. Andie Dikosavljevic..	65	2014-present
13. Robin Sharpe.....	63	1985-88
T14. Kristen Overton.....	62	1987-89
T14. Carolina Ramirez.....	62	2000-04
16. Carolina Maurer.....	61	1998-02

Doubles Victories

Player	No.	Years
1. Pleun Burgmans.....	107	2012-2016
2. Emily Flickinger.....	99	2012-2015
3. Alex Haney.....	93	2006-09
4. Kim Brannon.....	85	1986-1989
5. Jackie Kasler.....	83	2010-2014
6. Jen Pfeifler.....	82	2011-2015
7. Carolina Ramirez.....	79	2000-04
T8. Petra Bercik.....	71	2001-05
T8. Fani Chifchieva.....	71	2006-10
T8. Whitney Chappell.....	71	2006-09
11. Anna Funderburk.....	67	1989-1992
T12. Sarah Suitor.....	65	2001-05
T12. Nadia Smirnova.....	65	1993-96
14. Sandi Irwin.....	64	1986-89
15. Kristen Overton.....	55	1987-89



YEAR-BY-YEAR RESULTS

Year	Coach	Overall	SEC	SEC; Division Finish	Final ITA Ranking
1978	Betty Brown	22-9	NA	NA	N/A
1979	Betty Brown	9-12	2-5	NA	N/A
1980	Pat Gilliam	15-8	3-1	7th	N/A
1981	Pat Gilliam	12-7	4-2	7th	N/A
1982	Pat Gilliam	15-16	2-5	7th	N/A
1983	Pat Gilliam	14-13	5-3	6th	N/A
1984	Pat Gilliam	11-9	6-3	T-5th	N/A
1985	Susie Fain	17-22	2-8	10th	N/A
1986	Susie Fain	17-13	3-6	10th	N/A
1987	Al Parks	20-7	4-5	10th	N/A
1988	Ross Boling	15-10	3-6	T-8th	N/A
1989	Ross Boling	19-7	4-5	6th	N/A
1990	Ross Boling	10-14	2-9	9th	N/A
1991	Randy Holden	9-14	1-8	9th	N/A
1992	Randy Holden	5-13	3-9	10th	N/A
1993	Randy Holden	13-10	8-5	5th	25th
1994	Randy Holden	12-10	4-7	8th	34th
1995	Randy Holden	14-8	6-7	6th	23rd
1996	Randy Holden	16-9	6-8	6th	21st
1997	Randy Holden	0-20	0-12	12th	N/A
1998	Troy Porco	4-17	1-11	11th	N/A
1999	Troy Porco	10-12	2-10	11th	53rd
2000	Troy Porco	7-16	2-9	11th	72nd
2001	Troy Porco	3-17	0-11	12th	N/A
2002	Troy Porco	15-9	6-5	6th; 1st West	31st
2003	Troy Porco	9-12	2-9	10th; 4th West	N/A
2004	Troy Porco	11-12	3-8	T-9th; T-3rd West	60th
2005	Troy Porco	6-15	0-11	12th; 6th West	N/A
2006	Tim Gray	6-18	0-11	12th; 6th West	N/A
2007	Tim Gray	14-10	5-6	T-7th; T-1st West	29th
2008	Tim Gray	17-10	5-6	T-7th; 3rd West	28th
2009	Tim Gray	11-13	3-7	T-9th; T-4th West	35th
2010	Tim Gray	9-11	3-8	T-11th; T-5th West	58th
2011	Tim Gray	5-18	1-10	11th; 5th West	N/A
2012	Lauren Spencer	8-13	3-7	T-9th; T-4th West	73rd
2013	Lauren Spencer	19-9	7-6	T-5th; 3rd West	25th
2014	Lauren Spencer	17-11	6-7	T-6th	27th
2015	Lauren Spencer	16-14	3-10	12th	46th
2016	Lauren Spencer	24-8	9-4	4th	12th
2017	Lauren Spencer	25-11	5-8	10th	14th
ALL TIME		501-487	134-278		

YEAR-BY-YEAR RESULTS



Head Coach Betty Brown (50-24)

1978 (22-9)

Georgia	W, 7-2
Georgia	W, 6-3
Georgia	W, 5-2
(No other records available)	

1979 (9-12, 2-5)

Mississippi State	W, 8-1
Furman	W, 9-0
Duke	L, 4-5
North Carolina	L, 1-8
South Alabama	W, 7-2
Mississippi University for Women	W, 9-0
Tennessee-Chattanooga	W, 6-3
Florida State	L, 2-7
Alabama	L, 3-6
Miami (Fla.)	L, 0-9
LSU	L, 0-5
Georgia	L, 4-5
South Alabama	W, 6-3
Pensacola Junior College	W, 9-0
Mississippi University for Women	W, 9-0
Florida State	L, 2-7
Alabama	W, 5-4
Georgia	L, 2-5
Alabama	L, 4-5
Georgia	L, 2-7
Florida State	L, 4-5

Head Coach Pat Gilliam (68-53)

1980 (15-8, 3-1)

Ohio State	W, 8-1
Mississippi State	W, 9-0
South Florida	L, 1-8
UAB	W, 9-0
South Alabama	W, 7-2
Alabama	L, 4-5
Mississippi University for Women	W, 9-0
Ole Miss	W, 5-4
Georgia	W, 9-0
(No Other Records Available)	

1981 (12-7, 4-2)

Memphis State	W, 8-1
Tulane	W, 7-2
Vanderbilt	W, 6-3
Georgia State	W, 9-0
South Alabama	W, 8-1
Tennessee-Chattanooga	L, 4-5
Alabama	L, 4-5
Miami (Fla.)	L, 0-9
Northeast Louisiana	L, 1-6
Ole Miss	W, 5-1
Mississippi State	W, 9-0
UAB	W, 9-0
Alabama	L, 1-8
Mississippi University for Women	W, 9-0
Columbus College	W, 9-0
Ole Miss	W, 5-4
Miami (Fla.)	L, 0-9

1982 (15-16, 2-5)

Lamar	W, 6-3
Houston	W, 5-4
South Florida	L, 2-7
Vanderbilt	L, 2-7

Clemson	L, 4-5
LSU	L, 3-6
Florida State	L, 0-9
Rollins	L, 2-7
North Carolina	L, 1-8
Mississippi University for Women	W, 9-0
South Florida	L, 1-5
Louisiana Tech	W, 8-1
Southern Illinois	W, 9-0
Northeast Louisiana	L, 4-5
Southern Methodist	L, 1-8
Northeast Louisiana	W, 5-1
Cal State Santa Barbara	W, 5-4
Murray State	W, 8-1
Southern Illinois	W, 9-0
Alabama	W, 5-4
Ole Miss	L, 4-5
Florida	L, 0-6
UAB	W, 7-1
Georgia	L, 1-8
Kentucky	W, 8-3
South Alabama	W, 5-4
SEC Tournament (Oxford, Miss.)	
vs. Kentucky	W, 8-1
vs. Tennessee	L, 1-8
vs. Alabama	L, 3-6
vs. Vanderbilt	W, 7-2

1983 (14-13, 5-3)

Tennessee-Chattanooga	W, 7-2
UAB	W, 5-4
Georgia Southern	W, 8-1
Arkansas	W, 5-4
Memphis State	W, 8-1
Vanderbilt	W, 7-2
Southern Methodist	L, 2-7
Florida State	L, 3-6
Texas Tech	W, 6-3
South Alabama	W, 8-1
Florida State	L, 1-8
Mississippi State	W, 5-4
Georgia	L, 2-6
Florida	L, 1-8
Ole Miss	W, 2-7
Tennessee	L, 2-7
Vanderbilt	W, 7-2
Kentucky	W, 6-3
LSU	W, 6-3
SEC Tournament (Tuscaloosa, Ala.)	
vs. Ole Miss	L, 4-5
vs. Vanderbilt	W, 5-1
vs. LSU	L, 3-6

1984 (11-9, 6-3)

UAB	W, 7-2
Tennessee-Chattanooga	L, 1-8
Tennessee	L, 1-5
Tennessee-Martin	W, 5-3
Arkansas	L, 3-6
Memphis State	W, 9-0
Vanderbilt	W, 6-3
Georgia Tech	W, 9-0
Florida State	L, 2-7
Tennessee	W, 7-2
Rollins	L, 3-6
South Florida	L, 0-9
Florida Southern	W, 9-0

Florida	L, 0-9
Mississippi State	W, 7-2
Ole Miss	L, 3-6
Kentucky	W, 5-4
Georgia	L, 1-8
LSU	W, 6-3
Alabama	W, 8-1

Head Coach Susie Fain (34-35)

1985 (17-22, 2-8)

Alabama Christian	W, 9-0
Columbus College	W, 9-0
Ole Miss	L, 3-6
Memphis State	W, 8-1
Arkansas	L, 4-5
Tulane	L, 2-7
Georgia Tech	W, 6-3
West Florida	W, 9-0
Mississippi State	W, 7-2
Georgia Southern	W, 8-1
Rollins	L, 4-5
Flagler	W, 8-1
North Florida	L, 3-6
Appalachian State	W, 9-0
Wake Forest	L, 4-5
South Carolina	L, 2-5
Kentucky	L, 0-9
Tennessee	L, 2-7
Vanderbilt	W, 6-3
Southern Mississippi	W, 8-1
Notre Dame	L, 1-8
Abilene Christian	L, 4-5
SIU-Edwardsville	L, 4-5
Stetson	W, 7-2
Florida Southern	W, 5-4
Stephen F. Austin	W, 5-4
Minnesota	L, 4-5
Georgia	L, 1-6
Tennessee-Chattanooga	L, 0-9
South Alabama	L, 3-6
Mississippi State	W, 5-4
Southwestern Louisiana	W, 7-2
LSU	L, 3-6
South Alabama	L, 2-7
Ole Miss	L, 0-9
Florida State	L, 1-8
UAB	W, 7-2
Florida	L, 0-9
Alabama	L, 4-5

1986 (17-13, 3-6)

Georgia Tech	L, 4-5
Tulane	W, 8-1
Memphis State	W, 9-0
Arkansas	L, 3-6
Furman	W, 7-2
Clemson	L, 0-9
South Carolina	W, 5-4
South Florida	L, 2-7
North Florida	W, 5-4
LSU	L, 3-6
Wake Forest	W, 5-2
South Alabama	L, 0-9
Mississippi State	L, 2-7
Alabama	L, 3-6
UAB	W, 9-0
Birmingham Southern	W, 9-0
Florida	L, 0-9
Florida State	L, 2-7



YEAR-BY-YEAR RESULTS

Baylor	W, 9-0
Michigan State	W, 6-3
Western Illinois	W, 8-1
Miami (Ohio)	L, 4-5
Bowling Green	W, 9-0
Ohio State	W, 7-2
Kentucky	L, 2-7
Vanderbilt	W, 7-2
Ole Miss	W, 5-4
Columbus College	W, 7-2
Georgia	L, 1-8
Tennessee	W, 6-3

Head Coach Al Parks (20-7) 1987 (20-7, 4-5)

Florida State	L, 4-5
South Carolina	L, 2-6
Huntingdon	W, 5-4
North Florida	W, 7-2
Georgia Tech	W, 7-0
Wake Forest	W, 6-3
LSU	L, 2-7
Birmingham Southern	W, 8-1
UAB	W, 6-3
Baylor	W, 8-1
Southwest Missouri State	W, 7-2
Illinois	W, 7-2
Southern Illinois	W, 6-3
Notre Dame	W, 9-0
Roane State	W, 6-3
Michigan State	W, 8-1
Toledo	W, 8-1
Florida	L, 0-9
Georgia	L, 2-7
Kentucky	L, 0-9
Tennessee	W, 6-3
Vanderbilt	W, 7-2
Mississippi State	L, 3-6
Furman	W, 5-4
Alabama	W, 5-4
Birmingham Southern	W, 6-3
Ole Miss (forfeit)	W, 9-0

Head Coach Ross Boling (43-30) 1988 (15-10, 3-6)

F11	at North Florida	W, 6-3
F12	vs. Miami (Fla.)	L, 2-7
F13	at Florida	L, 0-9
F14	at South Florida	W, 6-3
F20	LSU	W, 5-4
F23	Northeast Louisiana	W, 8-1
F24	at Georgia Tech	W, 7-2
F27	at UAB	W, 9-0
M4	at Mississippi State	L, 4-5
M5	at Ole Miss	L, 3-6
M11	Baylor	W, 6-3
M11	Florida State	W, 6-3
M21	at Wake Forest	L, 3-6
M22	at South Carolina	L, 3-5
M23	at Furman	W, 9-0
M25	at Cal State Northridge	W, 9-0
M26	vs. Hawaii	W, 4-1
M28	at Pacific Lutheran	W, 9-0
M28	at Cal State San Diego	W, 8-1
A2	at Alabama	W, 5-4
A8	Vanderbilt	W, 7-2
A9	Tennessee	L, 2-7
A10	South Alabama	L, 1-5

A17	Kentucky	L, 2-7
A22	at Georgia	L, 1-8

1989 (19-7, 4-5)

J27	UNC-Charlotte	W, 9-0
F4	at Kentucky	L, 2-7
F10	UAB	
L, 3-6		
F12	North Florida	W, 7-2
F17	Georgia Tech	W, 6-3
F18	South Alabama	W, 6-0
F23	Florida State	L, 4-5
F24	South Florida	W, 5-2
M3	Michigan	W, 7-2
M4	Mississippi State	L, 2-7
M19	Flagler	W, 5-2
M19	Texas-San Antonio	W, 8-1
M20	Furman	W, 7-2
M21	South Carolina	L, 4-5
M26	Houston	W, 5-1
M25	New Mexico	W, 7-2
M27	UNLV	W, 5-4
M30	Colorado	W, 6-3
A1	Vanderbilt	W, 6-3
A8	Alabama	W, 7-2
A9	Georgia	L, 2-7
A14	Tulane	W, 5-1
A15	LSU	W, 6-3
A16	Florida	L, 1-8
A21	Ole Miss	W, 8-1
A22	Tennessee	L, 4-5

1990 (10-14, 2-9)

F10	vs. Furman	W, 6-3
F10	vs. Rollins	W, 8-1
F11	at Georgia Tech	L, 3-6
F16	at Miami (Fla.)	L, 0-9
F17	vs. Minnesota	L, 3-6
F23	vs. UAB	W, 8-1
F23	vs. South Florida	L, 3-5
F24	vs. Houston	L, 3-5
M3	Samford	W, 6-0
M3	West Florida	W, 9-0
M4	Auburn-Montgomery	W, 7-2
M31	at Ole Miss	L, 1-5
A1	at Alabama	L, 0-9
A6	Vanderbilt	W, 5-4
A9	at Mississippi State	L, 4-5
A13	at North Florida	W, 6-1
A14	at Florida	L, 0-9
A15	at Flagler	W, 6-1
A18	at Georgia	L, 0-6
A20	Tennessee	L, 2-7
A21	Kentucky	L, 2-7
A24	LSU	L, 3-5

Head Coach Randy Holden (67-85) 1991 (9-14, 1-8)

F1	vs. Duke	L, 0-9
F2	vs. Southern Methodist	L, 1-8
F3	vs. Cal State Santa Barbara	L, 3-6
F9	Furman	W, 7-2
F11	UAB	W, 9-0
F22	at Florida State	L, 2-7
F23	vs. South Florida	L, 4-5
F24	vs. Northeast Louisiana	W, 7-2
M2	at LSU	L, 1-5

M6	Georgia Tech	W, 7-2
M8	Ole Miss	L, 0-9
M11	Virginia Tech	W, 8-1
M22	at Kentucky	L, 2-5
M23	at Vanderbilt	W, 6-3
M27	at Tennessee	L, 0-6
M30	Alabama	L, 2-7
M31	Northeast Louisiana	W, 5-4
A4	Samford	W, 6-3
A7	Florida	L, 0-6
A12	Mississippi State	L, 2-5
A14	Minnesota	W, 7-2
A17	Georgia	L, 0-6
A25	SEC Tournament (Knoxville, Tenn.) vs. Mississippi State	L, 3-5

1992 (5-13, 3-9)

F8	at North Carolina	W, 5-4
F9	at Wake Forest	L, 0-6
F24	at Texas Christian	L, 3-5
F29	at Mississippi State	W, 5-4
M6	Vanderbilt	L, 1-5
M12	at Georgia	L, 2-7
M24	at Clemson	L, 1-8
M25	at South Carolina	L, 2-5
M29	at Georgia Tech	W, 8-1
M31	LSU	L, 3-6
A4	Tennessee	L, 2-7
A4	at South Florida	L, 3-6
A6	at Florida	L, 0-9
A11	at Alabama	W, 5-4
A13	Ole Miss	L, 2-6
A16	Arkansas	W, 5-1
A18	Kentucky	L, 4-5
A23	SEC Tournament (Tuscaloosa, Ala.) vs. Alabama	L, 1-5

1993 (13-10, 8-5)

J30	Middle Tennessee State	W, 9-0
J31	Georgia Tech	W, 9-0
F8	South Alabama	W, 5-2
F13	Samford	W, 8-1
F21	at Arkansas	W, 7-2
F26	Mississippi State	W, 9-0
F28	Clemson	L, 1-5
M5	at BYU	L, 2-6
M6	vs. Utah	L, 4-5
M9	South Carolina	W, 5-3
M21	vs. Iowa	W, 5-4
M24	vs. Kansas	L, 3-6
M25	at San Diego State	L, 3-6
M28	at Kentucky	W, 5-1
A2	at Tennessee	W, 5-3
A4	at Vanderbilt	W, 5-4
A10	Florida	L, 0-6
A12	Ole Miss	L, 1-5
A17	at LSU	W, 5-4
A23	Alabama	L, 2-7
A24	Georgia	L, 1-5
A29-30	SEC Tournament (Nashville, Tenn.) vs. Arkansas vs. Alabama	W, 6-0 L, 2-5

YEAR-BY-YEAR RESULTS



1994 (12-10, 4-7)

J28	at Minnesota	W, 7-2
J29	vs. Baylor	W, 5-4
J30	Duke	L, 1-5
F11	at Georgia Tech	W, 9-0
F13	at Clemson	L, 2-7
F16	Samford	W, 9-0
F20	UAB	W, 8-1
F27	at South Carolina	L, 4-5
M4	Middle Tennessee State	W, 9-0
M20	Kentucky	L, 4-5
M23	Ole Miss	L, 3-5
M30	LSU	W, 6-3
A2	Arkansas	W, 5-1
A3	South Alabama	W, 5-4
A9	at Mississippi State	W, 6-0
A10	at Alabama	L, 3-6
A15	at Florida	L, 0-6
A19	at Georgia	L, 0-6
A23	Tennessee	W, 6-0
A24	Vanderbilt	L, 3-5
A28-29	SEC Tournament (Fayetteville, Ark.)	
	vs. Tennessee	W, 5-4
	vs. Georgia	L, 0-5

1995 (14-8, 6-7)

J20	vs. Miami (Ohio)	W, 6-1
J21	vs. Western Michigan	W, 6-1
J22	at Indiana	W, 5-4
F5	UAB	W, 5-4
F20	South Alabama	L, 3-6
M6	South Carolina	L, 0-6
M9	Alabama	W, 6-2
M18	UNLV	W, 5-1
M20	vs. Iowa	W, 6-3
M24	at Vanderbilt	L, 4-5
M25	at Kentucky	W, 5-0
M29	at Clemson	W, 5-2
A1	at LSU	L, 3-5
A2	vs. Southwest Louisiana	W, 5-1
A5	Mississippi State	W, 5-0
A7	at Tennessee	L, 3-6
A15	Florida	L, 0-6
A20	Georgia	L, 0-5
A21	Ole Miss	W, 5-4
A23	at Arkansas	W, 5-3
A27	SEC Tournament (Auburn, Ala.)	
	vs. Alabama	W, 5-1
	vs. Florida	L, 0-6

1996 (16-9, 6-8)

F11	Middle Tennessee State	W, 6-0
F11	Southern Mississippi	W, 6-3
F14	Southwestern Louisiana	W, 5-1
F18	Arkansas	W, 6-3
F23	at Clemson	L, 3-5
F27	Samford	W, 9-0
M1	at Alabama	L, 2-7
M2	at Kansas	W, 5-4
M7	at Florida	L, 0-9
M17	vs. Miami (Fla.)	W, 5-2
M20	at UNLV	W, 7-2
M22	vs. New Mexico	W, 5-3
M25	at North Carolina	W, 6-0
M26	at NC State	W, 6-3
M29	Tennessee	L, 2-6
A2	at Georgia	W, 5-1
A5	Vanderbilt	L, 1-5

A12	LSU	W, 5-1
A14	at South Carolina	L, 2-5
A19	at Ole Miss	L, 1-5
A21	at Mississippi State	W, 5-2
A24	vs. Kentucky	W, 5-1
A26	SEC Tournament (Gainesville, Fla.)	
	vs. Alabama	W, 5-4
	vs. Vanderbilt	L, 3-5
M3	NCAA Regional	
	vs. Tennessee	L, 0-5



The 1996 team was the first to qualify for the NCAA Championships. Head coach Randy Holden guided the Tigers to a 16-9 record and a final ITA ranking of 21.

1997 (0-20, 0-12)

F14	at Miami (Fla.)	L, 0-6
F15	vs. Florida State	L, 0-6
F23	Clemson	L, 1-5
M1	at Kansas	L, 0-9
M2	vs. Kansas State	L, 2-7
M7	at Tennessee	L, 0-6
M9	at Kentucky	L, 1-5
M13	South Carolina	L, 1-5
M22	Indiana	L, 1-8
M24	at LSU	L, 0-6
M25	at Southwestern Louisiana	L, 4-5
M28	at Vanderbilt	L, 2-7
M29	at Middle Tennessee State	L, 4-5
M31	Ole Miss	L, 1-5
A4	at Arkansas	L, 0-5
A6	Alabama	L, 1-6
A10	Georgia	L, 0-6
A12	Florida	L, 1-5
A13	Mississippi State	L, 4-5
A17	SEC Tournament (Athens, Ga.)	
	vs. LSU	L, 0-6

Head Coach Troy Porco (65-110)

1998 (4-17, 1-11)

F6	Samford	W, 9-0
F14	at Indiana	L, 0-9
F15	vs. Purdue	L, 3-6
F20	at Clemson	W, 5-4
F22	at South Carolina	L, 1-8
F26	at Ole Miss	L, 1-8
F27	at Mississippi State	L, 2-7
M2	Vanderbilt	L, 0-9
M4	at Georgia	L, 0-9
M6	Kentucky	L, 1-8
M12	Virginia Tech	L, 2-7
M20	Middle Tennessee State	L, 3-6
M22	Florida State	L, 3-6
M25	at Alabama	W, 9-0
M27	Mercer	W, 9-0

M28	UAB	
L, 4-5		
A2	LSU	L, 2-7
A4	Arkansas	L, 0-6
A10	Tennessee	L, 0-9
A12	at Florida	L, 0-9
A16	SEC Tournament (Lexington, Ky.)	
	vs. Tennessee	L, 0-6

1999 (10-12, 2-10)

J23	Tennessee	L, 3-6
F4	Florida A&M	W, 9-0
F7	Florida State	L, 2-7
F13	Southern Mississippi	W, 5-1
F14	Alabama	W, 6-3
F20	Clemson	W, 6-3
F21	UAB	
W, 5-4		
	Miami (Fla.)	W, 7-2
F28	Florida International	W, 7-2
M5	Florida	L, 0-9
M6	Mississippi State	L, 3-6
M7	South Carolina	L, 0-6
M11	Ole Miss	L, 2-7
M22	Middle Tennessee State	W, 7-2
M24	Vanderbilt	L, 1-5
M27	LSU	W, 5-4
	Troy State	W, 0-6
A10	Arkansas	L, 0-6
A14	Georgia	L, 0-6
A18	Kentucky	L, 1-5
A22	SEC Tournament (Baton Rouge, La.)	
	vs. Kentucky	L, 3-5
A16	NCAA Regionals	
	vs. Arizona	L, 1-5



Troy Porco, in his second year as head coach on the Plains, took the Tigers back to the NCAA Championships for its second-ever appearance in 1999.

2000 (7-16, 2-10)

J21	vs. Mercer	W, 9-0
F5	Florida A&M	W, 9-0
F12	Florida State	L, 3-6
F13	Purdue	W, 5-4
F15	Samford	W, 8-0
F19	Miami (Fla.)	L, 2-5
F20	Middle Tennessee State	L, 4-5
F25	at South Florida	L, 3-6
F27	at Florida	L, 1-8
M5	at Georgia Tech	L, 3-6
M9	Vanderbilt	L, 3-6
M17	Kentucky	W, 5-1



YEAR-BY-YEAR RESULTS

M19	at Georgia	L, 0-6
M21	at South Carolina	L, 3-6
M24	at Mississippi State	L, 2-7
M26	at Ole Miss	L, 2-7
M31	at UAB	W, 5-4
A2	South Alabama	L, 2-5
A6	Arkansas	L, 2-7
A9	LSU	L, 1-5
A14	Tennessee	L, 1-6
A16	at Alabama	W, 5-1
A18	SEC Tournament (Oxford, Miss.) vs. South Carolina	L, 2-5

2001 (3-17, 0-12)

F9	Troy State	W, 4-3
F11	Southern Miss	W, 7-0
F16	Georgia Tech	L, 0-5
F18	Mississippi State	L, 3-4
F23	UAB	L, 2-5
F25	Alabama	L, 3-4
M4	at South Alabama	L, 3-4
M11	at Tennessee	L, 1-6
M13	South Carolina	L, 2-5
M17	Florida	L, 1-6
M23	at Vanderbilt	L, 1-6
M25	Mercer	W, 6-1
M27	at Florida International	L, 3-4
M29	at Miami (Fla.)	L, 1-6
A1	Georgia	L, 2-5
A7	at Kentucky	L, 1-6
A9	at Arkansas	L, 1-4
A14	at LSU	L, 3-4
A16	Ole Miss	L, 1-6
A19	SEC Tournament (Starkville, Miss.) vs. Ole Miss South Carolina	L, 1-4

2002 (15-9, 6-5)

F2	Mercer	W, 7-0
F3	Florida A&M	W, 7-0
F10	Jacksonville University	W, 7-0
F15	Florida State	W, 4-3
F17	Central Florida	W, 5-2
F23	UNC-Charlotte	W, 7-0
F25	at Georgia Tech	L, 1-6
F28	at Arkansas	W, 4-3
M8	at Georgia	L, 1-6
M10	at Tennessee	L, 3-4
M15	Ole Miss	W, 4-3
M17	Mississippi State	W, 6-1
M19	at LSU	W, 4-3
M22	at Alabama-Birmingham	W, 5-0
M27	at UNLV	L, 2-5
M29	South Carolina	L, 2-5
A1	Florida	L, 0-4
A5	at Vanderbilt	L, 0-7
A7	at Kentucky	W, 4-3
A14	Alabama	W, 4-2
A18-19	SEC Tournament (Columbia, S.C.) vs. Mississippi State vs. Vanderbilt	W, 4-1 L, 0-4
M11	NCAA Regionals (Nashville, Tenn.) vs. Indiana	W, 4-3

vs. Vanderbilt L, 0-5



In 2002, Auburn posted a 15-9 record and captured the SEC West Division title. The squad finished the season ranked 31st nationally and appeared in the NCAA Championships.

2003 (9-12, 2-9)

J26	Florida A&M	W, 7-0
J26	Mercer	W, 7-0
F1	Jacksonville	W, 7-0
F2	Georgia Tech	L, 2-5
F9	Southern	W, 7-0
F9	UAB	W, 5-2
F14	Furman	W, 6-1
F25	Troy State	W, 7-0
F28	Arkansas	W, 6-1
M2	LSU	L, 2-5
M7	Georgia	L, 0-7
M9	Tennessee	L, 1-6
M14	at Ole Miss	L, 3-4
M16	at Mississippi State	W, 5-2
M28	at South Carolina	L, 2-5
M30	at Florida	L, 0-7
A4	Vanderbilt	L, 0-7
A6	Kentucky	L, 1-6
A9	at Tulsa	L, 2-5
A14	at Alabama	L, 3-4
A17	SEC Tournament (Knoxville, Tenn.) vs. South Carolina	L, 1-4

2004 (11-12, 3-8)

J31	Florida A&M	W, 6-0
J31	Mercer	W, 7-0
F8	Georgia State	W, 5-2
F16	Southern Florida	L, 3-4
F19	at Georgia Tech	L, 2-5
F21	UAB	W, 7-0
F24	Troy	W, 7-0
F27	at Tennessee	L, 1-6
F29	at Georgia	L, 0-7
M5	Mississippi State	W, 5-2
M7	Ole Miss	L, 3-4
M13	Ohio State	L, 0-7
M19	Florida	L, 0-7
M21	South Carolina	L, 0-7
M26	at Kentucky	L, 2-5
M28	at Vanderbilt	L, 0-7
M30	Jacksonville State	W, 7-0
A2	at LSU	L, 2-5
A4	at Arkansas	W, 4-2
A7	Southern Miss	W, 6-1

A9	Tennessee-Chattanooga	W, 6-1
A11	Alabama	W, 4-3
A15	SEC Tournament (Nashville, Tenn.) vs. Alabama	L, 4-0

2005 (6-15, 0-11)

J30	Jacksonville	W, 5-2
F4	at Central Florida	W, 6-1
F6	Florida International	L, 0-7
F12	Furman	W, 4-3
F15	Alabama-Birmingham	W, 6-1
F18	at Cincinnati	W, 6-1
F19	Ohio State	L, 2-5
M1	Eastern Michigan	W, 4-3
M4	Tennessee	L, 1-6
M6	Georgia	L, 0-7
M11	at Mississippi State	L, 1-6
M13	at Ole Miss	L, 1-6
M18	South Alabama	L, 2-5
M25	at Florida	L, 0-7
M27	at South Carolina	L, 0-5
A1	Kentucky	L, 0-6
A3	Vanderbilt	L, 0-7
A8	LSU	L, 1-6
A10	Arkansas	L, 2-5
A16	at Alabama	L, 2-5
A21	SEC Tournament (Tuscaloosa, Ala.) vs. Georgia	L, 0-4

Head Coach Tim Gray (62-81)

2006 (6-18, 0-11)

J22	at Jacksonville	W, 4-2
J22	at North Florida	W, 5-1
J23	at Stetson	W, 5-2
J30	at Florida State	L, 3-4
F19	Georgia Tech	L, 0-7
F25	at Southern Illinois	W, 6-0
F26	at DePaul	L, 0-7
M3	at Kentucky	L, 0-7
M5	at Vanderbilt	L, 0-7
M8	Troy	L, 3-4
M10	Mississippi State	L, 1-6
M12	Ole Miss	L, 2-5
M16	Louisville	L, 2-5
M17	Georgia State	W, 6-1
M24	at Georgia	L, 1-6
M26	at Tennessee	L, 2-5
M31	South Carolina	L, 1-6
A2	Florida	L, 0-7
A10	at Arkansas	L, 0-7
A9	at LSU	L, 2-5
A11	at South Alabama	L, 2-5
A13	Samford	W, 5-2
A15	Alabama	L, 1-6
A20	SEC Tournament (Gainesville, Fla.) vs. Tennessee	L, 4-0

2007 (14-10, 5-6)

F3	Mercer	W, 7-0
F3	Florida A&M	W, 7-0
F10	at Texas A&M	L, 2-5
F11	at Rice	W, 6-1
F17	at Georgia Tech	L, 0-7
F23	at Louisville	W, 5-2
F24	Ohio State	W, 6-1
M2	Kentucky	L, 3-4



M4	Vanderbilt	L, 2-5
M9	at Mississippi State	W, 6-1
M13	at Ole Miss	W, 6-1
M18	at South Florida	W, 5-2
M23	Georgia	W, 4-3
M25	Tennessee	L, 2-5
M30	at South Carolina	L, 3-4
A1	at Florida	L, 0-7
A6	Arkansas	W, 5-2
A8	LSU	L, 3-4
A12	South Alabama	W, 7-0
A14	at Alabama	W, 4-3
A19-20	SEC Tournament (Lexington, Ky.)	
	vs. Arkansas	W, 4-1
	vs. Georgia	L, 1-4
M12	NCAA Regionals (Athens, Ga.)	
	vs. NC State	W, 4-3
	vs. Georgia	L, 0-4



In 2007, Auburn went 14-10, were co-champions of the SEC Western Division and qualified for the NCAA Championships.

2008 (17-10, 5-6)

J23	Georgia Tech	L, 0-7
J26	Mercer	W, 7-0
J26	Alabama A&M	W, 7-0
F2	at Georgetown	W, 7-0
F3	at Maryland	W, 7-0
F12	Georgia State	W, 7-0
F15	at Florida State	L, 2-5
F16	at Troy	W, 7-0
F23	Jacksonville State	W, 7-0
F24	Sothern Miss	W, 7-0
F29	at Arkansas	W, 4-3
M2	at LSU	L, 3-4
M7	Ole Miss	W, 6-1
M9	Mississippi State	W, 5-2
M11	TCU	W, 4-3
M21	at Vanderbilt	L, 2-5
M23	Kentucky	L, 3-4
M26	Marshall	W, 6-1
M28	at Tennessee	L, 3-4
M30	at Georgia	L, 2-5
A4	Florida	L, 3-4
A6	South Carolina	W, 4-3
A12	Alabama	W, 6-1
A17-20	SEC Tournament (Auburn, Ala.)	
	vs. South Carolina	W, 4-0
	vs. Florida	L, 0-4
M 9-11	NCAA Regional (Gainesville, Fla.)	

	vs. Ohio State	W, 4-3
	vs. Florida	L, 0-4

2009 (11-13, 3-7)

J28	at Georgia Tech	L, 2-5
J31	Louisville	W, 4-0
F1	at Clemson	L, 3-4
F6	at Texas A&M	L, 2-5
F8	at TCU	L, 3-4
F21	UAB	W, 7-0
F21	Georgia State	W, 5-2
F28	Mercer	W, 4-0
F28	at Troy	W, 4-0
M6	at LSU	W, 5-2
M8	Arkansas	L, 1-6
M15	at Ole Miss	W, 4-3
M21	William & Mary	W, 5-2
M22	Marshall	W, 7-0
M26	Vanderbilt	L, 3-4
M29	at Kentucky	W, 5-2
M31	Southern Miss	W, 7-0
A3	Georgia	L, 2-5
A5	Tennessee	L, 2-5
A10	at South Carolina	L, 2-5
A12	at Florida	L, 3-4
A18	at Alabama	L, 3-4
A23-25	SEC Tournament (Tuscaloosa, Ala.)	
	vs. Alabama	L, 0-4
M9-11	NCAA Regional (Gainesville, Fla.)	
	vs. Florida State	L, 0-4

2010 (9-11, 3-8)

J 23	Kennesaw State	W, 7-0
J 24	Georgia Tech	L, 0-7
J 29	vs. LSU	W, 4-0
J 30	at USC	L, 0-4
F 6	Alabama A&M	W, 7-0
F 13	Jacksonville State	W, 7-0
F 24	Troy	W, 7-0
F 28	TCU	W, 4-3
M 5	at Tennessee	L, 6-1
M 7	at Georgia	L, 4-3
M 12	Florida	L, 6-1
M 14	South Carolina	W, 4-3
M 26	Kentucky	W, 5-2
M 28	at Vanderbilt	L, 7-0
A 2	at Arkansas	L, 6-1
A 4	at LSU	L, 5-2
A 9	Ole Miss	L, 4-3
A 11	Mississippi State	W, 6-1
A 17	Alabama	L, 4-3
A 22	SEC Tournament (Athens, Ga.)	
	vs. Arkansas	L, 4-0

2011 (5-18, 1-10)

J 29	at Michigan	L, 7-0
J 30	vs. North Carolina State	L, 7-0
F 11	at Florida State	L, 6-1
F 13	at Georgia Tech	L, 7-0
F 19	Alabama A&M	W, 7-0
F 19	Memphis	W, 4-3
F 25	vs. Ohio State	L, 4-0
F 26	vs. Depaul	L, 4-3
F 27	vs. Utah	L, 4-1
M 4	Georgia	L, 7-0

M 6	Tennessee	L, 6-1
M 11	at South Carolina	L, 4-3
M 13	at Florida	L, 4-0
M 19	Boston University	W, 4-3
M 19	Troy	W, 6-1
M 25	Vanderbilt	L, 7-0
M 27	at Kentucky	L, 6-1
A 1	LSU	L, 5-2
A 3	Arkansas	L, 6-1
A 8	at Mississippi State	W, 4-1
A 10	at Ole Miss	L, 4-0
A 18	at Alabama	L, 7-0
A 21	SEC Tournament (Knoxville, Tenn.)	
	vs. Arkansas	L, 4-0

Head Coach Lauren Spencer (109-66) 2012 (8-13, 3-7)

J28	at Troy	W, 5-2
J29	Alabama A&M	W, 7-0
J29	Southern Miss	W, 7-0
F12	at Florida State	L, 5-2
F19	at Louisiana-Monroe	W, 6-1
F24	Virginia	L, 5-0
F25	SMU	W, 4-3
F26	Oklahoma State	L, 4-3
M2	Ole Miss	L, 7-0
M4	Mississippi State	W, 4-3
M9	at Arkansas	W, 5-2
M11	at LSU	L, 4-3
M14	Georgia Tech	L, 5-2
M23	Kentucky	W, 5-2
M25	at Vanderbilt	L, 5-2
M30	Florida	L, 7-0
A1	South Carolina	L, 4-3
A6	at Tennessee	L, 4-3
A8	at Georgia	L, 6-1
A14	Alabama	L, 4-3
A19	SEC Tournament (Oxford, Miss.)	
	vs. Tennessee	L, 4-2

2013 (19-9, 7-6)

J26	at North Carolina	L, 0-4
J27	at Depaul	W, 4-0
F3	Georgia Southern	W, 7-0
F3	Alabama A&M	W, 7-0
F9	Georgia State	W, 6-1
F13	Alabama State	W, 7-0
F13	Troy	W, 7-0
F21	Texas Tech	W, 5-2
F23	Tulane	W, 5-2
F23	UAB	W, 5-2
M1	at Mississippi State	W, 5-1
M3	at Ole Miss	W, 4-3
M8	LSU	W, 7-0
M10	Arkansas	W, 6-1
M15	at Alabama	L, 3-4
M22	at South Carolina	L, 0-5
M25	at Florida	L, 0-4
M29	Vanderbilt	L, 2-5
M31	Kentucky	W, 4-0
A5	at Texas A&M	L, 0-4
A7	at Missouri	W, 4-1
A12	Georgia	L, 0-4
A14	Tennessee	W, 4-1
A18-19	SEC Tournament (Starkville, Miss.)	
	vs. Arkansas	W, 4-3
	vs. Texas A&M	L, 0-4



YEAR-BY-YEAR RESULTS

M10-11 NCAA Tournament
(Berkeley, Calif.)
vs. Saint Mary's
at California W, 4-2
L, 0-4



In 2013, Auburn went 19-9, earning the second-most wins a single-season since 1989. The Tigers advanced to the 2nd round of the NCAA Tournament.

2014 (17-11, 6-7)

J25 at #17 Texas L, 1-4
J26 vs. #24 Florida State W, 4-1
F1 Troy W, 7-0
F9 Georgia Southern W, 7-0
F9 Samford W, 4-0
F14 at Southern W, 7-0
F14 at Tulane W, 4-2
F15 vs. Northwestern State W, 4-0
F15 vs. Nicholls State W, 4-1
F21 vs. #75 Tulane W, 4-0
F22 vs. #24 Rice L, 2-4
F23 vs. #21 Texas Tech W, 4-3
F28 #32 Ole Miss W, 5-2
M2 Mississippi State W, 6-1
M7 at #45 Arkansas W, 4-3
M9 at #47 LSU W, 4-3
M14 #8 Alabama L, 2-4
M21 at #5 Florida L, 0-4
M23 at #56 South Carolina W, 4-1
M28 at #34 Kentucky L, 0-4
M30 at #10 Vanderbilt L, 0-4
A4 Missouri W, 4-0
A6 at #10 Texas A&M L, 2-4
A11 at #31 Tennessee L, 3-4
A13 at #8 Georgia L, 0-4
A17 SEC Tournament
(Columbia, Mo.)
#38 Kentucky L, 2-4
M9-10 NCAA Tournament
(Clemson, S.C.)
vs. #58 Winthrop W, 4-1
at #14 Clemson L, 0-5

2015 (16-14, 3-10)

J 17 Middle Tennessee State W, 4-1
J 17 Alabama A&M W, 4-0
J 24 vs. #62 Wake Forrest W, 4-0
J 25 vs. #10 Georgia L, 4-0
J 31 at #29 Texas Tech L, 4-1
J 31 vs. Wyoming W, 4-0
F 7 vs. Washington State W, 6-1
F 7 vs. Wyoming W, 7-0
F 8 vs. Washington W, 5-2

F 14 vs. #73 Samford W, 4-0
F 14 at UAB W, 4-0
F 15 Troy W, 7-0
F 27 at #42 South Carolina L, 4-1
M 1 at #3 Florida L, 5-0
M 6 Tennessee W, 4-0
M 8 #6 Georgia L, 4-1
M 15 at #16 Ole Miss L, 4-3
M 20 at #30 Texas A&M L, 4-0
M 22 at #49 LSU L, 5-2
M 27 Vanderbilt L, 6-1
M 29 #18 Kentucky W, 4-1
A 1 at #44 Mississippi State L, 4-3
A 4 at #12 Alabama L, 4-0
A 7 Alabama A&M W, 7-0
A 7 Alabama A&M W, 5-0
A 10 Missouri W, 7-0
A 12 #38 Arkansas L, 4-3
A 15 SEC Tournament
(Columbia, S.C.)
vs. #67 Tennessee W, 4-2
vs. #13 Alabama L, 4-0
M 8 NCAA Tournament
(Palo Alto, Calif.)
vs. #19 Pepperdine L, 4-2

2016 (24-8, 9-4)

J 16 UAB W, 7-0
J22 vs. #69 Michigan State W, 4-2
J23 at #12 Miami L, 4-1
J 30 Samford W, 7-0
F 06 UT Martin W, 4-0
F 06 Troy W, 7-0
F 07 Texas State W, 6-1
F 07 Alabama A&M W, 7-0
F 13 Mercer W, 4-0
F 13 Mercer W, 7-0
F 20 North Florida W, 7-0
F20 Georgia Southern W, 5-1
F 27 vs. #11 Oklahoma St. W, 4-3
F 28 vs. #10 Pepperdine L, 4-0
M 03 #14 Texas A&M W, 4-2
M 05 #9 LSU W, 4-0
M 11 at #71 Tennessee W, 4-2
M 13 at #3 Georgia L, 4-1
M 18 at #61 Missouri W, 5-2
M 20 at #31 Arkansas L, 6-1
M 24 #27 Mississippi State W, 5-2
M 26 #39 Ole Miss W, 4-1
A 01 #51 Alabama W, 4-3
A 08 #10 South Carolina W, 4-3
A 10 #8 Florida L, 4-0
A 15 at #6 Vanderbilt L, 4-3
A 17 at #20 Kentucky W, 4-3
A 22 SEC Tournament
(Baton Rouge, La.)
vs. #11 South Carolina W, 4-0
vs. #3 Florida L, 4-2
M 13 NCAA Regional
(Auburn, Ala.)
Alcorn State W, 4-0
#22 Arizona State W, 4-2
M19 NCAA Round of 16
(Tulsa, Okla.)
vs. #6 Vanderbilt L, 4-0



In 2016, Auburn finished the season fourth in the SEC and advanced to the NCAA Tournament Round of 16, both program records. The Tigers also finished a program best 12th in the final Oracle/ITA team rankings. Pleun Burgmans and Alizee Michaud were named ITA All-Americans in doubles after advancing to the second round of the NCAA Doubles Tournament.

2017 (25-11, 5-8)

J 21 Samford W, 7-0
J 22 ULM W, 4-1
J 22 Georgia State W, 4-0
J 27 Fresno State W, 4-0
J 29 #18 Southern California W, 4-1
F 3 at Illinois W, 4-1
F 5 at Michigan State W, 4-3
F 14 vs. #7 Ohio State L, 4-1
F 14 vs. Yale W, 4-1
F 14 vs. #11 Georgia Tech W, 4-2
F 14 Troy W, 7-0
F 14 Alabama A&M W, 6-1
F 17 Mercer W, 7-0
F 17 Mercer W, 4-1
F 27 vs. Tulane W, 4-0
F 27 vs. Denver W, 4-0
F 27 vs. #5 Texas Tech W, 4-2
M 8 at #33 Mississippi State W, 6-1
M 10 #16 Tennessee W, 4-0
M 12 #13 Georgia L, 1-4
M 17 at #22 Texas A&M L, 1-4
M 19 at #27 LSU L, 3-4
M 24 #8 Vanderbilt L, 2-5
M 26 #13 Kentucky L, 3-4
M 31 #13 South Carolina W, 4-3
A 2 #1 Florida L, 0-4
A 7 at #38 Alabama L, 3-4
A 12 at #27 Ole Miss W, 4-0
A 14 Missouri W, 4-1
A 16 #18 Arkansas W, 4-3
A 20 SEC Tournament
(Nashville, Tenn.)
vs. #14 Arkansas W, 4-3
vs. 4 Georgia W, 4-1
vs. #1 Florida L, 2-4
M 12 NCAA Regional
(Auburn, Ala.)
Depaul W, 4-0
#37 Florida State W, 4-2
M19 NCAA Round of 16
(Athens, Ga.)
at #6 Texas Tech L, 2-4

OPPONENT RECORDS



School	Record	School	Record
Abilene Christian	0-1	Middle Tennessee	5-3
Alabama	18-32	Minnesota	2-2
Alabama A&M	11-0	Mississippi State	29-15
Alabama State	2-0	Mississippi University for Women	5-0
Alabama-Christian	1-0	Missouri	6-0
Alcorn State	1-0	Missouri State	1-0
Appalachian State	1-0	Murray State	1-0
Arizona	0-1	New Mexico	2-0
Arizona State	1-0	Nicholls State	1-0
Arkansas	24-19	North Carolina	2-6
Auburn-Montgomery	1-0	North Carolina State	2-1
Baylor	4-0	North Florida	7-1
Birmingham Southern	2-0	Northwestern State	1-0
Boston University	1-0	Notre Dame	1-1
Bowling Green	1-0	Ohio State	4-5
BYU	0-1	Oklahoma State	1-1
California	0-1	Ole Miss	17-27
Cal State Santa Barbara	1-1	Pacific	1-0
Cal State San Diego	1-0	Pensacola	1-0
Cal State Northridge	1-0	Pepperdine	0-2
UCF	2-0	Purdue	1-1
Charlotte	2-0	Rice	1-1
Cincinnati	1-0	Roane State	1-0
Clemson	3-10	Rollins	1-3
Colorado	1-0	Saint Mary's	1-0
Columbus State	4-0	Samford	13-0
Denver	1-0	San Diego State	0-1
DePaul	3-2	SIU-Edwardsville	0-1
Duke	0-6	South Alabama	10-9
Eastern Michigan	1-0	South Carolina	9-27
Flagler	3-0	South Florida	3-12
Florida	0-41	Southern	2-0
Florida A&M	7-0	Southern Illinois	4-0
FIU	1-2	Southern Mississippi	9-0
Florida Southern	2-0	SMU	1-3
Florida State	21	Stephen F. Austin	1-0
Fresno State	1-0	Stetson	2-0
Furman	9-0	TCU	2-2
Georgetown	1-0	Tennessee	12-32
Georgia	8-53	UT-Martin	2-0
Georgia Southern	7-0	UT-Chattanooga	4-3
Georgia State	8-0	Texas	0-1
Georgia Tech	10-15	Texas A&M	1-7
Hawaii	1-0	Texas-San Antonio	2-0
Houston	3-1	Texas State	1-0
Huntington	1-0	Texas Tech	4-2
Indiana	2-2	Toledo	1-0
Illinois	1-0	Troy	16-1
Iowa	2-0	Tulane	8-1
Jackson State	0-0	Tulsa	0-1
Jacksonville State	3-0	Utah	0-2
Kansas	1-2	UAB	27-2
Kansas State	0-2	UNLV	3-1
Kennesaw State	1-0	USC	1-1
Kentucky	12-24	Vanderbilt	16-30
Lamar	1-1	Virginia	1-0
LSU	14-27	Virginia Tech	1-1
Louisiana-Lafayette	3-1	Wake Forrest	0-1
ULM	6-2	Washington	1-0
Louisiana Tech	1-0	Washington State	1-0
Louisville	2-1	Winthrop	0-1
Marshall	2-0	Wyoming	2-0
Maryland	1-0	Wake Forest	2-3
Memphis	6-0	West Florida	2-0
Mercer	14-0	Western Illinois	1-0
Miami (Fla.)	3-9	Western Michigan	1-0
Miami (Ohio)	1-1	William & Mary	1-0
Michigan	1-1	Yale	1-0
Michigan State	4-1		



Fani Chifchieva is the only player in program history to be selected First Team All-SEC four times. Chifchieva advanced to the semifinals of the NCAA Singles Tournament in 2008, the farthest a Tiger player has advanced in the postseason in school history.

SEC WEEKLY HONORS

SEC ATHLETE OF THE WEEK

2006	Dzelijan Memisi	January 24
2007	Fani Chifchieva	March 20
2008	Fani Chifchieva	March 6
2011	Plamena Kurteva	February 23
2016	Andie Dikosavljevic	Mar. 9/Apr. 18
2017	Alizee Michaud	March 1

SEC FRESHMAN OF THE WEEK

2008	Gaby Beelen	March 18
2016	Alannah Griffin	Feb. 10/Apr. 13
2017	Taylor Russo	Feb. 8/March 1

ALL-SEC HONORS

SEC COACH OF THE YEAR

2002 Troy Porco

SEC PLAYER OF THE YEAR

2008 Fani Chifchieva

SEC FRESHMAN OF THE YEAR

2013 Pleun Burgmans

SEC COMMUNITY SERVICE TEAM

2003-04	Carolina Ramirez
2004-05	Sarah Suitor
2005-06	Erin Gray
2006-07	Alex Haney
2009-10	Taylor Schreimann
2011-12	Taylor Schreimann
2013-14	Jen Pfeifler
2014-15	Jen Pfeifler
2015-16	Paula de Man
2016-17	Roos van der Zwaan

ALL-SEC TEAM (FIRST TEAM)

1982	Andrea Bobby
1984	Manisha Perera
2007	Fani Chifchieva
2008	Fani Chifchieva
2008	Alex Haney
2009	Fani Chifchieva
2009	Alex Haney
2010	Fani Chifchieva
2013	Pleun Burgmans
2014	Pleun Burgmans
2016	Andie Dikosavljevic

2016	Alizee Michaud
2017	Alizee Michaud

ALL-SEC TEAM (SECOND TEAM)

1993	Anna Funderburk	Singles
1993	Nadia Smirnova	Doubles
1994	Sharon Mieres	Doubles
1994	Nadia Smirnova	Doubles
2002	Petra Bercik	Doubles
2002	Carolina Ramirez	Doubles
2007	Alex Haney	
2014	Emily Flickinger	
2015	Pleun Burgmans	
2016	Pleun Burgmans	
2017	Andie Dikosavljevic	

ALL-SEC FRESHMAN TEAM

2013	Pleun Burgmans
2016	Alannah Griffin
2017	Taylor Russo

INDIVIDUAL QUALIFERS

NCAA SINGLES PARTICPANTS		ROUND
2007	Fani Chifchieva	2nd
2008	Fani Chifchieva	Semis
2009	Fani Chifchieva	1st
2010	Fani Chifchieva	2nd
2013	Pleun Burgmans	1st
2016	Alizee Michaud	1st
2016	Andie Dikosavljevic	1st

NCAA DOUBLES PARTICPANTS		ROUND
1982	Andrea Bobby	1st
1982	Gigi Acker	1st
1993	Anna Funderburk	2nd
1993	Nadia Smirnova	2nd
2002	Carolina Maurer	1st
2002	Katia Illarionova	1st
2007	Alex Haney	1st
2007	Melissa Koning	1st
2008	Alex Haney	2nd
2008	Melissa Koning	2nd
2009	Whitney Chappell	1st
2009	Alex Haney	1st
2013	Pleun Burgmans	1st
2013	Plamema Kurteva	1st
2014	Pleun Burgmans	SF
2014	Emily Flickinger	SF
2015	Emily Flickinger	1st
2015	Pleun Burgmans	1st
2016	Pleun Burgmans	2nd
2016	Alizee Michaud	2nd
2017	Alizee Michaud	2nd
2017	Taylor Russo	2nd



In 2016, Auburn hosted a regional and advanced to the NCAA Tournament Round of 16 for the first time in school history. The Tigers finished with a 24-8 (9-4 SEC) record on the season.

TEAM APPEARANCES

YEAR	RESULT	OPPONENT	ROUND
1996	L, 0-5	Tennessee	1st
1999	L, 1-5	Arizona	1st
2002	W, 4-3	Indiana	1st
	L, 0-4	Vanderbilt	2nd
2007	W, 4-3	North Carolina State	1st
	L, 0-4	Georgia	2nd
2008	W, 4-3	Ohio State	1st
	L, 0-4	Florida	2nd
2009	L, 0-4	Florida State	1st
2013	W, 4-2	St. Mary's	1st
	L, 0-4	California	2nd
2014	W, 4-1	Winthrop	1st
	L, 5-0	Clemson	2nd
2015	L, 4-2	Pepperdine	1st
2016	W, 4-0	Alcorn State	1st
	W, 4-2	Arizona State	2nd
	L, 4-0	Vanderbilt	3rd
2017	W, 4-0	DePaul	1st
	W, 4-2	Florida State	2nd
	L, 2-4	Texas Tech	3rd
TOTALS	9-11 (.450)		



FANI CHIFCHIEVA | Plovdiv, Bulgaria

All-American (2007, 08, 09)

- Ranked in the top 16 of the Oracle/ITA singles rankings in three of four seasons, including finishing the season No. 11 in the final rankings in 2008.
- Advanced to the semifinals of the NCAA Tournament in singles (2008).
- Awards: ITA Southern Region Player of the Year (2010), ITA Southern Region Rookie of the Year (2007), ITA Player to Watch (2008), First Team All-SEC (2007, 08, 09, 10), SEC Women's Tennis Athlete of the Year (2008)
- Career Wins: Singles – 109, Doubles – 71



ALEX HANEY | Grayson, Georgia

All-American (2008)

- Finished in the top 20 of the final Oracle/ITA doubles rankings twice, including a No. 10 finish in 2008.
- Advanced to the second round of the NCAA Singles and Doubles Tournament in 2009.
- Awards: ITA Southern Region Senior of the Year (2009), First Team All-SEC (2008, 09), Second Team All-SEC (2007), All-SEC Community Service Team (2007).
- Career Wins: Singles – 104, Doubles – 93



MELISSA KONING | Mount Eliza, Australia

All-American (2008)

- Selected as an All-American in doubles (2008) after finishing the season ranked No. 10 with partner Alex Haney. The duo advanced to the second round of the NCAA Tournament.
- Career Wins: Singles – 28, Doubles – 35 (two seasons)



PLEUN BURG MANS | Bergeijk, Netherlands

All-American (2014, 15, 16)

- Ranked No. 9 in the final Oracle/ITA doubles rankings with partner Alizee Michaud, which is the highest finish in program history (2016).
- Advanced to the semifinals of the NCAA Tournament with partner Emily Flickinger (2014).
- Two-time ITA Southern Region Doubles Champion (2013-14) and ITA Southern Region Singles Champion (2013).
- Awards: ITA Southern Region Player of the Year (2016), ITA Southern Region Rookie of the Year (2013), First Team All-SEC (2013-14), Second Team All-SEC (2015-16), SEC Freshman of the Year (2013)
- Career Wins: Singles – 88, Doubles – 107



EMILY FLICKINGER | Arlington, Virginia

All-American (2014, 15)

- Finished the season ranked No. 10 in doubles with Pleun Burgmans (2014, 15)
- Advanced to the semifinals of the NCAA Tournament with partner Pleun Burgmans (2014).
- Two-time ITA Southern Region Doubles Champion (2013-14)
- Awards: Second Team All-SEC (2014)
- Career Wins: Singles – 67, Doubles – 99



ALIZEE MICHAUD | Orlando, Florida

All-American (2016)

- Paired with Pleun Burgmans and finished the 2016 season with a 14-6 record including a win over Florida's No. 3 duo Brooke Austin and Kourtney Keegan in the SEC Tournament. The dup finished 8-4 against ranked opponents.
- Advanced to the second round of the NCAA Tournament (2016)
- Awards: First Team All-SEC (2016), USTA/ITA Southern Regional Singles Champion (2016)



AUBURN FINAL RANKINGS

1989
No. 85 Kristen Overton
No. 95 Kim Brannon

1992
No. 57 Anna Funderbunk

1993
No. 25 Auburn
No. 35 Anna Funderburk
No. 22 Anna Funderbunk/Nadia Smirnova

1994
No. 34 Auburn
No. 76 Nadia Smirnova
No. 32 Nadia Smirnova/Mieres

1995
No. 23 Auburn
No. 90 Kasey Gladding

1996
No. 21 Auburn

1999
No. 53 Auburn
No. 52 Andrea Piski
No. 47 Andrea Piski/Heidii Stewart

2000
No. 72 Auburn
No. 72 Andrea Piski

2001
No. 49 Andrea Piski

2002
No. 31 Auburn
No. 121 Petra Bercik
No. 37 Carolina Maurer/Katia Illarionova

2003
No. 55 Carolina Ramirez/Petra Bercik

2004
No. 60 Auburn

2007
No. 29 Auburn
No. 16 Fani Chifchieva
No. 19 Alex Haney/Melissa Koning

2008
No. 28 Auburn
No. 11 Fani Chifchieva
No. 70 Alex Haney
No. 10 Alex Haney/Melissa Koning

2009
No. 35 Auburn
No. 15 Fani Chifchieva
No. 30 Alex Haney

2010
No. 58 Auburn
No. 31 Fani Chifchieva
No. 87 Paula Schippers/Myrthe Molenveld

2012
No. 73 Auburn

2013
No. 25 Auburn
No. 25 Pleun Burgmans
No. 19 Pleun Burgmans/Plamena Kurteva
No. 40 Jen Pfeifler/Jackie Kasler

2014
No. 27 Auburn
No. 49 Pleun Burgmans
No. 10 Pleun Burgmans/Emily Flickinger
No. 66 Michala Kucharova/Reka Muller
No. 73 Jen Pfeifler/Jackie Kasler

2015
No. 46 Auburn
No. 67 Pleun Burgmans
No. 10 Pleun Burgmans/Emily Flickinger

2016
No. 12 Auburn
No. 21 Andie Dikosavljevic
No. 39 Alizee Michaud
No. 69 Pleun Burgmans
No. 9 Pleun Burgmans/Alizee Michaud
No. 76 Pleun Burgmans/Paula de Man

2017
No. 14 Auburn
No. 22 Alizee Michaud
No. 38 Andie Dikosavljevic
No. 104 Taylor Russo
No. 15 Alizee Michaud/Taylor Russo
No. 63 Caroline Turner/Georgie Axon
No. 79 Andie Dikosavljevic/Alannah Griffin



After being named ITA Southern Region Rookie of the Year (2013), Pleun Burgmans was named ITA Southern Region Player of the Year, becoming the second player in program history to win both.

ITA HONORS

ITA National Women's Assistant Coach of the Year
2016 Chris Hooshyar

ITA Southern Region Coach of the Year
2002 Troy Porco
2016 Lauren Spencer
2017 Lauren Spencer

ITA Southern Region Assistant Coach of the Year
2003 Kelly Brown
2016 Chris Hooshyar

ITA Southern Region Player of the Year
2009 Alex Haney
2010 Fani Chifchieva
2016 Pleun Burgmans

ITA Southern Region Rookie of the Year
2007 Fani Chifchieva
2013 Pleun Burgmans

ITA Southern Region Player to Watch
2008 Fani Chifchieva

ITA Southern Region Cissie Leary Award for Sportsmanship
2014 Jackie Kasler
2015 Jen Pfeifler
2017 Andie Dikosavljevic



A		G		P	
Acker, Gigi	1980, 81, 82, 83	Gandolfo, Donna	1980, 81	Paul, Jenny	2003, 04
Adams, Kelly	2006, 07	Gauthier, Jenny	1986	Peaden, Nancy	2004, 05
Almagno, Tori	2005	Gladding, Kasey	1992, 93, 94, 95	Perera, Manisha	1981, 82, 83
Altman, Lucy	1997, 98, 99	Gray, Erin	2003, 04, 05	Pfeifler, Jen	2012, 13, 14, 15
Anderson, Lis	1991	Green, Jenny	1987	Phillips, Renee	1981, 82, 83, 84
Arbet, Ann	1989	Greenburg, Katie	2001	Piski, Andrea	1999, 2000, 01
Arechavaleta, Maria	2011	Griffin, Alannah	2016, 17		
Axon, Georgie	2017	Griswold, Elizabeth	1998, 99		
B		H		R	
Bailey, Donna	1981	Hardling, Maria	1992, 93, 94, 95	Ramirez, Carolina	2001, 02, 03, 04
Balcomb, Carrie	1979, 80, 81	Haney, Alex	2006, 07, 08, 09	Roberts, Courtney	1992
Bankston, Tracy	1991	Hastenrath, Jil	2007, 08, 09, 10	Rosenbaum, Heidi	1984, 85
Bates, Michel	1983, 84, 85	Higgins, Dot	1981	Rosenbrock, Isabel	2003, 04, 05
Bercik, Petra	2002, 03, 04, 05			Russo, Taylor	2017
Beadman, Michelle	1989, 90	I		S	
Beem, Susan	1979, 81	Illarianova, Katia	2000, 01, 02	Saurborn, Liz	2001, 02, 03, 04
Beelen, Gaby	2008	Irwin, Sandi	1986, 87, 88, 89	Schippers, Paulina	2010, 11, 12, 13
Bennett, Olivia	2011, 12			Schmidt, Kim	1979
Blanno, Sofia	2016	J		Schreimann, Taylor	2009, 10, 11, 12
Boban, Judith	1999	Janska, Martina	2001, 02, 03, 04	Sharp, Robin	1985, 86, 87, 88
Bobby, Andrea	1980, 81, 82, 83	Jardim, Simone	1999	Sigmundstad, Mette	1996
Bolvig, Kristin	1985			Smirnova, Nadia	1993, 94, 95, 96
Brannon, Kim	1986, 87, 88, 89	K		Smith, Nancy	1992, 93, 94
Branyon, Laura	1979, 80	Kasler, Jacqueline	2011, 12, 13, 14	Snyder, Kathy	1979
Brock, Kathleen	97	Koning, Melissa	2007, 08, 09	Steffen, Claudia	1984, 85, 86, 87
Bryan, Kate	1994, 95, 96, 97	Kozlowski, Carolyn	1998, 99	Stewart, Heidii	1996, 97, 98, 99
Burgmans, Pleun	2013, 14, 15, 16	Kozlowski, Kimberly	1993, 94, 95, 96	Suitor, Sarah	2002, 03, 04, 05
Bybee, Heather	2007, 08, 09	Kucharova, Michala	2013, 2014, 15	Sutherland, Becky	1979, 80
		Kurteva, Plamena	2010, 11, 12, 13		
C		L		T	
Callahan, Kristin	1984, 85, 86	LaGrange, Alexandra	1995, 96, 97, 98	Thompson, Caroline	1998, 99
Canahan, Kristin	1998, 99	Larson, Leslie	1988, 89, 90, 91	Thornton, Caroline	2010, 11
Chappell, Whitney	2006, 07, 08, 09	Larson, Mary Beth	1983, 84, 85, 86	Tooke, Tracy	1982, 83
Chifchieva, Fani	2007, 08, 09, 10	Levant, Lauren	2012, 13	Turner, Caroline	2016, 17
Clancy, Moira	1983	Lewis, Mary Katherine	2015, 17		
Cohen, Taylor	2011, 12			U	
Cowart, Ashley	2003, 04, 05	M		Umphrey, Joe Ann	1979, 80
Crawford, Jacky	2001	Maurer, Carolina	1999, 2000, 01, 02		
		Merono, Pilar	1999	V	
D		Michaud, Alizee	2016, 17	Voges, Rhonda	1979
Donald, Missy	1991	Mieres, Diana	1991, 92, 93, 94	Vukadinovic, Daniela	2009, 10
Djuranovic, Dunja	2008	Mieres, Sandra	1990, 91, 92, 93		
de Man, Paula	2014, 15, 16	Mieres, Sharon	1994, 95, 96, 97	W	
Dikosavljevic, Andie	2015, 16, 17	Minor, Mitzi	1979, 80	Watt, Sue	1986, 87, 88, 89
		Molenveld, Myrthe	2010	Wilkey, Anne	1980, 81, 82, 83
E		Muller, Reka	2014, 15, 16	Wilson, Reecia	1985
Echert, Lisa	1979			Woods, Mary Jo	1982
Edwards, Summa	1998, 99	O		Worrell, Suzie	1979
Epps, Evan	2004	Olesen, Kim	1987, 88		
		Overton, Kristin	1988, 89		
F					
Filatova, Olga	1996				
Farmer, Elizabeth	1991				
Fitzmorris, Tara	1997, 98				
Flickinger, Emily	2012, 13, 14, 15				
Funderburk, Anna	1991, 92, 93				