



AUBURN HOOP HISTORY

Year-by-Year Scores

1905-06 Won 5, Lost 1, Tied 1
COACH: Mike Donahue
CAPTAIN: Frank Jones

		AU	Opp.
Jan. 19	Tulane (H)	27	7
Feb. 7	Montgomery YMCA (H)	29	12
Feb. 7	Columbus YMCA (H)	16	18
Feb. 15	Mercer (H)	64	8
Feb. 16	Atlanta Athletic Club (A)	28	17
Feb. 17	Georgia Tech (A)	26	6
Mar. 16	Birmingham Athletic Club (A)	14	14

1906-07 Won 4, Lost 2
COACH: Mike Donahue
CAPTAIN: C.W. Woodruff

		AU	Opp.
	Tulane	35	15
	Mercer	48	9
Feb. 14	Columbus YMCA (ot) (H)	29	27
Feb. 16	Birmingham Athletic Club (A)	23	29
Feb. 26	Columbus YMCA (A)	16	11
	Birmingham Athletic Club	20	21

1907-08 Won 6, Lost 5
COACH: Mike Donahue
CAPTAIN: R.Y. Ware

		AU	Opp.
Feb. 5	Montgomery YMCA (A)	25	18
	Columbus YMCA (A)	32	37
Feb. 8	Birmingham Athletic Club (H)	26	14
Feb. 15	Birmingham Athletic Club (A)	21	25
Feb. 16	Bessemer Athletic Club (A)	34	13
	Wetumpka Athletic Club (H)	47	11
	Montgomery YMCA	21	27
	Wake Forest	38	13
Feb. 22	Montgomery YMCA (H)	27	31
Mar. 2	Columbus YMCA (H)	19	33
	Georgia	34	20

1908-09 Won 4, Lost 3
COACH: Mike Donahue
CAPTAIN: T.C. Locke

		AU	Opp.
	Georgia (A)	37	48
Jan. 8	Columbus YMCA (H)	14	41
Jan. 16	Bessemer Athletic Club (H)	14	17
Jan. 18	Tulane (H)	29	15
Jan. 27	Augusta Athletic Assoc. (H)	37	9
Feb. 4	Georgia Tech (A)	24	8
	Mercer (A)	26	23

1909-10 Won 11, Lost 6
COACH: Mike Donahue
CAPTAIN: S. Gordy

		AU	Opp.
	Wetumpka Athletic Club (H)	56	12
	Columbus YMCA (A)	8	44
	Mercer (A)	38	20
	Georgia (A)	35	40
	Atlanta Athletic Club (A)	23	44
	Mercer (H)	56	19
	Bessemer Athletic Club (H)	26	18
	Birmingham Athletic Club (A)	31	33
	Bessemer Athletic Club (A)	23	10
	Birmingham YMCA (A)	12	23
	Birmingham H.S. (H)	29	16
	Georgia (H)	56	21
	Birmingham Ath. Club (H)	31	19
	Montgomery YMCA (H)	24	16
	Columbus YMCA (H)	16	42
	Montgomery YMCA (A)	26	17
	Birmingham Ath. Club (A)	26	19

1910-11 Won 3, Lost 5
COACH: Mike Donahue
CAPTAIN: L.A. Scarbrough

		AU	Opp.
	Columbus YMCA	33	45
	Georgia (A)	24	26
	Birmingham Athletic Club	19	53
	Bessemer Athletic Club	28	24
	Birmingham H.S.	21	28
	Birmingham YMCA	27	30
	Texas	45	27
	Nashville Athletic Club	36	34

1911-12 Won 2, Lost 6
COACH: Mike Donahue
CAPTAIN: E.A. Major

		AU	Opp.
	Columbus YMCA	12	19
	Atlanta Athletic Club	22	60
	Georgia (A)	19	40
	Birmingham Athletic Club	26	35
	Birmingham H.S.	31	8
	Birmingham Athletic Club	9	27
	Bessemer Athletic Club	19	20
Feb. 10	LSU (H)	38	15

1912-13 Won 6, Lost 9
COACH: Mike Donahue

		AU	Opp.
Jan. 10	Georgia (A)	12	92
Jan. 11	Atlanta Athletic Club (A)	30	62
Jan. 18	Mercer (H)	33	31
Jan. 23	Cumberland (H)	19	35
Jan. 24	Selma YMCA (A)	29	15
Jan. 25	Marion (A)	26	15
Feb. 5	Bessemer Athletic Club (A)	9	31
Feb. 6	Birmingham Athletic Club (A)	12	35
Feb. 7	Birmingham High School (A)	24	34
Feb. 8	Montgomery YMCA (H)	39	23
Feb. 12	Georgia Tech (A)	36	27
	Columbus YMCA (H)	13	77
Feb. 22	Georgia Tech (H)	23	19
Mar. 1	Mercer (A)	19	36
Mar. 1	Georgia (H)	21	67

1913-14 Won 3, Lost 10
COACH: Mike Donahue
CAPTAIN: E.E. Clements

		AU	Opp.
Jan. 9	Columbus YMCA (A)	3	74
Jan. 10	Atlanta Athletic Club (A)	20	70
Jan. 16	Georgia (A)	16	80
Jan. 17	Wetumpka Ath. Club (H)	82	17
Jan. 23	Birmingham Athletic Club (H)	19	42
Jan. 24	Montgomery YMCA (H)	24	20
Jan. 30	Bessemer Athletic Club (A)	27	68
Jan. 31	Mercer (H)	25	23
Feb. 14	Columbus YMCA (H)	11	41
Feb. 20	Georgia Tech (A)	12	50
Feb. 21	Mercer (A)	13	60
Feb. 23	Georgia Tech (H)	6	21
Feb. 28	Georgia (H)	15	46

1914-15 Won 3, Lost 5
COACH: Mike Donahue
CAPTAIN: E.E. Clements

		AU	Opp.
Jan. 18	Atlanta Athletic Club (A)	29	43
Jan. 22	Mississippi State (A)	16	44
Jan. 23	Mississippi State (A)	11	32
Jan. 30	Atlanta Athletic Club (A)	18	76
Feb. 22	Mississippi State (H)	19	18
Feb. 23	Mississippi State (H)	21	17
Feb. 26	Mobile YMCA (H)	29	22
Feb. 27	Columbus YMCA (A)	29	51

1915-16 Won 3, Lost 5
COACH: Mike Donahue
CAPTAIN: W.C. Payne

		AU	Opp.
Jan. 21	Marion (H)	24	27
Jan. 21	Montgomery YMCA (H)	16	29
Feb. 3	Talladega Athletic Club (A)	4	31
Feb. 5	Marion (A)	18	6
Feb. 7	Georgia (A)	14	81
Feb. 8	Georgia (H)	18	45
Feb. 10	LSU (H)	24	23
Feb. 10	Montgomery YMCA (H)	58	18

1916-17 Won 2, Lost 2
COACH: Mike Donahue
CAPTAIN: M.H. Floyd

		AU	Opp.
Jan. 19	Georgia (A)	18	90
Jan. 26	Marion (H)	38	18
Jan. 31	Montgomery YMCA	43	25
Feb. 13	LSU (H)	13	37

1917-18 Won 2, Lost 3
COACH: Mike Donahue
CAPTAIN: M.H. Floyd

		AU	Opp.
	Birmingham College	27	24
Jan. 18	LSU (A)	31	43
Jan. 19	LSU (A)	27	34
Jan. 20	Birmingham Athletic Club (H)	19	27
	Birmingham College	19	11

1918-19 Won 4, Lost 3
COACH: Mike Donahue

		AU	Opp.
Jan. 11	Montgomery YMCA (H)	59	10
Jan. 14	Georgia (A)	25	20
Jan. 18	Atlanta Athletic Club (A)	23	40
Jan. 25	Camp Benning (H)	68	9
Jan. 29	Georgia (H)	35	22
	Atlanta Athletic Club	26	36
Feb. 12	Birmingham Athletic Club	22	38

1919-20 Won 11, Lost 7
COACH: Mike Donahue
CAPTAIN: Jimmy Wade

		AU	Opp.
	West Point Athletic Club (A)	38	8
	Montgomery YMCA (H)	55	19
	Georgia (A)	16	31
Jan. 22	Georgia Tech (A)	29	24
	Birmingham Ath. Club (H)	27	21
	Atlanta Athletic Club (A)	19	57
	Clemson (A)	60	12
	Charlotte YMCA (A)	30	36
	VMI (A)	19	45
	Washington & Lee (A)	10	34
	Virginia (A)	27	21
	VPI (A)	20	26
	Atlanta Athletic Club (H)	24	44
Feb. 13	LSU (H)	33	21
	Georgia (H)	31	29
	Montgomery YMCA (A)	38	19
	Birmingham Ath. Club (A)	25	20
Mar. 9	Georgia Tech (H)	26	17

1920-21 Won 5, Lost 8
COACH: Mike Donahue
CAPTAIN: H.B. Barks

		AU	Opp.
Jan. 11	Mercer (ot) (H)	36	31
Jan. 12	Georgia (H)	22	31
Jan. 15	Atlanta Athletic Club (A)	17	42
Jan. 17	Camp Benning (A)	11	19
Jan. 22	Georgia Tech (A)	30	28

2007-08 Outlook
2007-08 Tigers
2007-08 Coaching Staff
2007-08 Opponents
2006-07 Review
2006-07 Tiger Records
2005-06 History
2004-05 Tiger Tracks
2003-04 Administration

Jan. 28	Vanderbilt	(A)	27	7
Jan. 29	Kentucky	(A)	25	40
Jan. 31	Centre College	(A)	24	42
Feb. 5	Georgia	(A)	23	29
Feb. 12	Birmingham Athletic Club	(A)	34	39
Feb. 22	Spring Hill	(H)	41	32
Mar. 3	Clemson	(N1)	45	25
Mar. 4	Georgia	(N1)	24	32

(N1) Southern Conference Tournament, Atlanta, Ga.

1921-22 Won 5, Lost 8
COACH: Wilbur Hutsell
CAPTAIN: Joe Harrison

		AU	Opp.
Jan. 13	Mercer	(A)	7 31
Jan. 14	Atlanta Athletic Club	(A)	12 42
Jan. 21	Clemson	(H)	32 19
Jan. 28	Georgia Tech	(A)	17 35
Feb. 2	Mercer	(H)	26 28
Feb. 4	Birmingham Ath. Club	(A)	29 19
Feb. 11	Georgia Tech	(H)	29 26
Feb. 14	Camp Benning	(H)	17 30
Feb. 18	Birmingham Ath. Club	(H)	34 21
Feb. 24	Newberry	(N1)	32 21
Feb. 27	North Carolina	(N1)	27 32
	Georgia	(A)	15 39
	Georgia	(H)	17 31

(N1) Southern Conference Tournament, Atlanta, Ga.

1922-23 Won 7, Lost 7
COACH: Wilbur Hutsell
CAPTAIN: Charlie Dudley

		AU	Opp.
	West Point Athletic Club	25	18
Jan. 12	Georgia Tech	(A)	17 35
	Montgomery YMCA	37	22
	Wofford	42	19
	Georgia	(A)	29 35
	Clemson		19 24
	Wofford		19 20
	Furman		22 43
	Birmingham Athletic Club	31	17
	Camp Benning	24	19
	Birmingham Athletic Club		19 42
	Georgia	(H)	45 16
Feb. 23	Georgia Tech	(H)	29 26
Feb. 27	Mercer	(N1)	24 45

(N1) Southern Conference Tournament, Atlanta, Ga.

1923-24 Won 4, Lost 9
COACH: Wilbur Hutsell

		AU	Opp.
Jan. 8	Columbus YMCA	36	19
Jan. 11	Georgia Tech	(A)	24 39
Jan. 12	Atlanta Athletic Club		22 31
Jan. 16	Camp Benning	42	18
Jan. 19	Birmingham Athletic Club	44	23
Jan. 25	Tulane		19 32
Jan. 26	Tulane		22 27
Jan. 30	Georgia	(H)	17 32
Feb. 5	Georgia	(A)	18 33
Feb. 9	Georgia Tech	(H)	18 33
Feb. 16	Birmingham Athletic Club OT		32 36
Feb. 29	Georgia Tech	(N1)	35 29
Mar. 1	Alabama	(N1)	19 40

(N1) Southern Conference Tournament, Atlanta, Ga.

1924-25 Won 3, Lost 11
COACH: Herb Bunker

		AU	Opp.
Dec. 18	Mercer	(A)	21 28
Dec. 19	Albany YMCA	(A)	21 28
Jan. 5	Tulane	(A)	18 33
Jan. 6	Tulane	(A)	31 45
Jan. 13	Camp Benning	(H)	27 36
Jan. 17	Georgia Tech	(H)	21 28
Jan. 28	Montgomery YMCA	(H)	34 12
Jan. 31	Mercer	(H)	27 38
Feb. 7	Georgia Tech	(A)	15 14
Feb. 10	Georgia	(A)	17 40
Feb. 12	Camp Benning	(A)	38 36
Feb. 14	Birmingham Athletic Club	(A)	25 35
Feb. 17	Georgia	(H)	21 37

Feb. 18	Virginia	(N1)	27	29
---------	----------	------	----	----

(N1) Southern Conference Tournament, Atlanta, Ga.

1925-26 Won 5, Lost 10
COACH: Mike Papke
CAPTAIN: Bill McKinney

		AU	Opp.
Dec. 6	Howard	(A)	32 16
	Birmingham-Southern	(A)	32 17
Jan. 9	Georgia Tech	(H)	32 28
Jan. 11	Howard	(H)	35 21
Jan. 23	Birmingham Athletic Club	(A)	27 44
Jan. 28	Mobile YMCA	(A)	17 19
Jan. 29	Tulane	(A)	30 33
Jan. 30	Tulane	(A)	31 52
Feb. 4	Georgia	(A)	28 49
Feb. 5	North Carolina State	(A)	36 43
Feb. 6	VMI	(A)	25 41
Feb. 8	Kentucky	(A)	26 35
Feb. 13	Birmingham Ath. Club	(H)	39 32
Feb. 19	Georgia Tech	(A)	18 28
Feb. 26	North Carolina State	(N1)	26 32

(N1) Southern Conference Tournament, Atlanta, Ga.

Feb. 9	Sewanee	(H)	36 16
Feb. 11	Georgia Tech	(A)	28 42
Feb. 12	Florida	(H)	35 34
Feb. 13	Florida	(H)	51 40
Feb. 15	Clemson		41 33
Feb. 16	Clemson		33 26
	Georgia	(A)	19 21
Feb. 27	Georgia Tech	(H)	33 35

1926-27 Won 13, Lost 6
COACH: Mike Papke
CAPTAIN: Buck Ellis

		AU	Opp.
Jan. 5	Georgia Tech (ot)	(A)	20 22
Jan. 10	Mississippi State	(H)	31 34
Jan. 11	Mississippi State	(H)	27 24
Jan. 15	Florida	(H)	51 34
Jan. 28	Tulane	(A)	42 33
Jan. 29	Tulane	(A)	35 12
Jan. 30	Tulane	(H)	50 11
Feb. 1	Tulane	(H)	33 30
Feb. 3	Clemson	(H)	45 26
Feb. 4	Clemson	(H)	45 23
Feb. 5	Florida	(A)	40 28
Feb. 11	Sewanee	(H)	46 15
Feb. 12	Georgia Tech	(H)	42 24
Feb. 15	Tennessee	(A)	23 24
Feb. 16	Chattanooga	(A)	34 39
Feb. 17	Vanderbilt	(A)	35 39
Feb. 18	Sewanee	(A)	35 28

Feb. 25	Virginia Tech	(N1)	38	33
Feb. 26	North Carolina	(N1)	15	28

(N1) Southern Conference Tournament, Atlanta, Ga.

1927-28 Won 20, Lost 2
COACH: Mike Papke
CAPTAIN: Fob James Sr.

		AU	Opp.
	Montgomery YMCA	(H)	38 12
	White's Business College	(H)	92 13
Jan. 7	Georgia Tech	(H)	56 29
	So. College (Fla.)	(H)	51 18
Jan. 13	Florida	(A)	39 23
Jan. 14	Florida	(A)	43 33
Jan. 18	Clemson	(H)	56 26
Jan. 19	Clemson	(H)	30 23
Jan. 27	Tulane	(A)	32 17
Jan. 28	Tulane	(A)	49 31
Jan. 29	Tennessee	(H)	63 14
Feb. 1	Vanderbilt	(H)	62 28
Feb. 3	Georgia	(H)	28 25
Feb. 9	Georgetown (Ky.)	(H)	41 25
Feb. 10	Ole Miss	(H)	42 43
Feb. 11	Ole Miss	(H)	58 38
Feb. 21	Florida	(H)	58 32
Feb. 22	Florida	(H)	50 28
Feb. 27	Clemson	(N1)	27 26
Feb. 28	Georgia Tech	(N1)	30 29
Mar. 1	Mississippi State	(N1)	42 34
Mar. 2	Ole Miss	(N1)	30 31

(N1) Southern Conference Tournament, Atlanta, Ga.

1928-29 Won 6, Lost 15
COACH: George Bohler
CAPTAIN: Frank DuBose

		AU	Opp.
	Camp Benning	(H)	40 38
	Birmingham Ath. Club	(H)	37 34
	Camp Benning	(A)	37 43
	LaGrange YMCA	(H)	29 32
	Birmingham Athletic Club	(A)	20 38
	So. College (Fla.)	(H)	33 29
Jan. 25	Florida	(A)	33 44
Jan. 26	Florida	(A)	39 32
Jan. 28	LSU	(H)	28 45
Jan. 29	LSU	(H)	28 65
Feb. 1	Clemson	(A)	20 46
Feb. 2	Georgia	(A)	31 39
Feb. 6	Georgia Tech	(A)	25 42
Feb. 8	Tulane	(H)	35 48



1928 SOUTHERN CONFERENCE TOURNAMENT RUNNER-UP
Front Row (L-R): Coach Mike Papke, Buck Ellis, Ebb James, Fob James, Jelly Akin, Moon Mullins, Manager Square Salter. Back Row (L-R): Shorty Smith, Louis James, Frank DuBose.



Feb. 9	Tulane	(H)	40	25
	Mercer	(A)	41	46
	Mercer	(A)	29	31
Feb. 16	Georgia Tech	(H)	41	46
Feb. 18	Florida	(H)	29	46
Feb. 19	Florida	(H)	51	26
Mar. 1	Georgia	(N1)	24	42

(N1) Southern Conference Tournament, Atlanta, Ga.

1929-30 Won 1, Lost 10
COACH: Hal Lee
CAPTAIN: Louie James

			AU	Opp.
Jan. 10	Clemson	(H)	31	39
Jan. 11	South Carolina	(H)	30	22
Jan. 25	Tennessee	(A)	18	33
Jan. 26	Vanderbilt	(H)	27	29
Jan. 29	Georgia	(H)	35	43
Feb. 7	LSU	(A)	27	44
Feb. 8	LSU	(A)	40	46
Feb. 11	Tulane	(A)	40	45
Feb. 12	Tulane	(A)	37	41
Feb. 18	Georgia Tech	(H)	34	47
Feb. 19	Georgia Tech	(A)	29	40

1930-31 Won 9, Lost 6
COACH: Sam McAllister
CAPTAIN: Ralph Jordan

			AU	Opp.
Jan. 6	South Carolina	(H)	39	21
Jan. 10	Clemson	(H)	44	20
Jan. 12	North Carolina State (ot)	(H)	30	28
Jan. 23	Georgia	(A)	27	30
Jan. 24	South Carolina	(A)	36	16
Jan. 26	Clemson	(A)	33	37
Jan. 28	Georgia Tech	(H)	33	37
Jan. 31	Vanderbilt	(H)	26	36
Feb. 6	Tulane	(H)	44	22
Feb. 7	Tulane	(H)	51	35
Feb. 14	Vanderbilt	(H)	42	25
	Camp Benning		54	13
Feb. 24	Georgia Tech	(A)	22	47
Feb. 27	Virginia	(N1)	33	26
Feb. 28	Georgia	(N1)	27	31

(N1) Southern Conference Tournament, Atlanta, Ga.

1931-32 Won 12, Lost 3
COACH: Sam McAllister
CAPTAIN: Jack Stewart

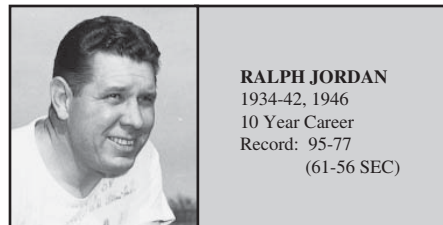
			AU	Opp.
Jan. 8	Birmingham Southern	(A)	41	23
Jan. 9	Vanderbilt	(A)	36	23
Jan. 12	Georgia Tech	(H)	25	22
Jan. 22	Florida	(A)	43	26
Jan. 23	Florida	(A)	28	21
Jan. 30	Vanderbilt	(H)	38	23
Feb. 5	Tulane	(A)	21	26
Feb. 6	Tulane	(A)	42	37
Feb. 8	LSU	(A)	48	34
Feb. 9	LSU	(A)	34	30
Feb. 13	Georgia Tech	(A)	28	36
Feb. 15	Georgia	(H)	26	24
Feb. 26	North Carolina State	(N1)	34	33
Feb. 27	LSU	(N1)	30	22
Feb. 28	North Carolina	(N1)	31	52

(N1) Southern Conference Tournament, Atlanta, Ga.

1932-33 Won 4, Lost 9 (4-7 SEC)
COACH: Sam McAllister
CAPTAIN: Slick Kaley

			AU	Opp.
Jan. 20	Birmingham Southern	(A)	33	50
Jan. 22	Vanderbilt	(A)	24	25
Jan. 24	LSU	(H)	25	26
Jan. 25	LSU	(H)	25	24
Feb. 3	Tulane	(H)	22	19
Feb. 4	Tulane	(H)	18	35
Feb. 9	Vanderbilt	(H)	20	21
Feb. 11	Georgia	(A)	21	22
Feb. 15	Georgia Tech	(H)	20	29
Feb. 17	Florida	(H)	32	30
Feb. 18	Florida	(H)	16	11
Feb. 20	Georgia Tech	(N1)	18	29
Feb. 24	LSU	(N2)	33	57

(N1) Atlanta, Ga. (Atlanta Athletic Club)
(N2) SEC Tournament, Atlanta, Ga.



RALPH JORDAN
1934-42, 1946
10 Year Career
Record: 95-77
(61-56 SEC)

1933-34 Won 2, Lost 11 (2-9 SEC)
COACH: Ralph Jordan

			AU	Opp.
Jan. 9	Vanderbilt	(A)	22	31
Jan. 11	Georgia Tech	(H)	26	28
Jan. 26	Birmingham Southern	(H)	22	39
Jan. 27	Vanderbilt	(H)	33	48
Feb. 3	Tulane	(A)	18	34
Feb. 4	Tulane	(A)	20	30
Feb. 5	LSU	(A)	17	40
Feb. 6	LSU	(A)	16	38
Feb. 10	Georgia	(H)	30	21
Feb. 14	Georgia Tech	(A)	20	24
Feb. 17	Florida	(A)	23	21
Feb. 18	Florida	(A)	21	39
Mar. 1	Tennessee	(N1)	26	43

(N1) SEC Tournament, Atlanta, Ga.

1934-35 Won 4, Lost 13 (3-9 SEC)
COACH: Ralph Jordan

			AU	Opp.
Jan. 5	Lanett Athletic Club	(A)	44	25
Jan. 8	South Carolina	(A)	34	35
Jan. 9	South Carolina	(A)	26	42
Jan. 10	Sewanee	(A)	18	19
Jan. 11	Vanderbilt	(A)	27	37
Jan. 12	Vanderbilt	(A)	24	41
Jan. 26	Birmingham Southern	(H)	20	37
Feb. 1	Tennessee	(H)	27	48
Feb. 2	Birmingham Southern	(A)	40	46
Feb. 5	Georgia	(A)	29	33
Feb. 6	Georgia Tech	(A)	24	25
Feb. 8	Florida	(H)	39	34
Feb. 9	Florida	(H)	25	35
Feb. 13	Georgia Tech	(H)	19	34
Feb. 14	Sewanee	(H)	28	13
Feb. 15	Sewanee	(H)	33	24
Feb. 15	Vanderbilt	(H)	25	37

1935-36 Won 10, Lost 7 (7-4 SEC)
COACH: Ralph Jordan

			AU	Opp.
Dec. 19	Clemson	(H)	23	33
Dec. 20	Clemson	(H)	18	31
Jan. 9	Vanderbilt	(A)	27	47
Jan. 10	Sewanee	(A)	25	23
Jan. 11	Sewanee	(A)	34	25
Jan. 24	Birmingham Southern	(A)	26	17
Jan. 25	Vanderbilt	(H)	32	37
Feb. 4	Georgia Tech	(H)	31	28
Feb. 10	Sewanee	(H)	41	31
Feb. 11	Sewanee	(H)	42	18
Feb. 15	Georgia	(H)	33	26
Feb. 19	Georgia Tech	(A)	22	46
Feb. 21	Florida	(A)	32	16
Feb. 22	Florida	(A)	13	20
Feb. 28	Birmingham Southern	(N)	41	22
Feb. 29	Georgia	(N1)	43	26
Mar. 1	Tennessee	(N1)	25	43

(N1) SEC Tournament, Knoxville, Tenn.

1936-37 Won 11, Lost 4 (7-4 SEC)
COACH: Ralph Jordan

			AU	Opp.
Jan. 9	Fort Benning	(H)	54	13
Jan. 15	Sewanee	(A)	41	34
Jan. 16	Sewanee	(A)	34	29
Jan. 30	Birmingham Southern	(A)	39	22

Feb. 1	LSU	(H)	37	24
Feb. 2	LSU	(H)	34	54
Feb. 8	Sewanee	(H)	39	32

1937-38 Won 14, Lost 5 (6-3 SEC)
COACH: Ralph Jordan

			AU	Opp.
Jan. 14	Sewanee	(A)	36	31
Jan. 15	Sewanee	(A)	38	19
Jan. 19	Birmingham Southern	(A)	49	39
Jan. 28	Georgia Tech	(H)		
Jan. 28	Oglethorpe	(H)	46	43
Jan. 29	Oglethorpe	(H)	49	14
Feb. 7	Sewanee	(H)		
Feb. 8	Sewanee	(H)		
Feb. 12	Georgia	(H)	34	27
Feb. 14	Georgia Tech	(A)	42	43
Feb. 18	Birmingham Southern	(A)		
Feb. 25	Florida	(A)	34	43
Feb. 26	Florida	(A)	35	51
Feb. 28	Georgia Tech	(A)	32	54
Mar. 3	LSU	(A1)	34	60

(Only Scores That Are Available)

(A1) SEC Tournament, Baton Rouge, La.

1938-39 Won 16, Lost 6 (8-4 SEC)
COACH: Ralph Jordan

			AU	Opp.
Dec. 16	Lanett Mill	(H)	40	21
Dec. 17	Nehi Reds	(H)	41	36
Jan. 4	Lanett Mill	(A)	38	21
Jan. 6	Spring Hill	(H)	30	22
Jan. 7	Spring Hill	(H)	44	23
Jan. 13	Sewanee	(H)	41	31
Jan. 14	Sewanee	(H)	38	27
Jan. 16	Vanderbilt	(H)	39	41
Jan. 28	Birmingham Southern	(H)	50	17
Feb. 2	Mississippi College	(H)	44	59
Feb. 4	Georgia	(A)	21	43
Feb. 10	Georgia	(H)	34	29
Feb. 11	Birmingham Southern	(H)	52	35
Feb. 16	Vanderbilt	(A)	42	49
Feb. 17	Sewanee	(A)	34	27
Feb. 18	Sewanee	(A)	39	28
Feb. 22	Georgia Tech	(H)	38	24
Feb. 24	Florida	(H)	40	38
Feb. 25	Florida	(H)	25	31
Feb. 27	Georgia Tech	(A)	49	33
Mar. 2	Tulane	(N1)	43	30
Mar. 3	Tennessee	(A1)	35	49

(N1, A1) SEC Tournament, Knoxville, Tenn.

1939-40 Won 7, Lost 10 (6-7 SEC)
COACH: Ralph Jordan

			AU	Opp.
Dec. 14	Spring Hill	(H)	37	34
Dec. 15	Spring Hill	(H)	33	34
Jan. 5	LSU	(A)	39	50
Jan. 6	LSU	(A)	42	26
Jan. 11	Vanderbilt	(A)	45	51
Jan. 12	Sewanee	(A)	51	32
Jan. 13	Sewanee	(A)	64	32
Jan. 20	Vanderbilt	(H)	46	50
Jan. 27	Howard	(H)	33	37
Feb. 3	Georgia	(H)	28	32
Feb. 6	Georgia Tech	(A)	31	53
Feb. 9	Georgia	(H)	47	48
Feb. 16	Sewanee	(H)	46	30
Feb. 17	Sewanee	(H)	63	34
Feb. 21	Georgia Tech (ot)	(H)	39	38
Feb. 24	Florida	(H)	37	42
Feb. 28	Georgia	(N1)	41	48

(N1) SEC Tournament, Knoxville, Tenn.

1940-41 Won 13, Lost 6 (6-5 SEC)
COACH: Ralph Jordan

			AU	Opp.
Jan. 3	Spring Hill	(H)	35	30
Jan. 4	Spring Hill	(H)	46	34
Jan. 10	Sewanee	(H)	36	24
Jan. 11	Sewanee	(H)	39	25
Jan. 13</				

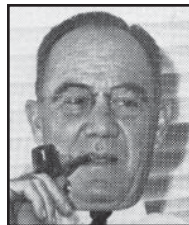
Jan. 24	Tulane	(H)	45	41
Jan. 25	Vanderbilt	(H)	45	44
Jan. 31	Tennessee	(H)	33	51
Feb. 1	Georgia Tech	(A)	39	48
Feb. 3	Mississippi State	(H)	44	48
Feb. 5	Georgia Tech	(H)	51	45
Feb. 8	Georgia	(H)	43	39
Feb. 10	Howard	(H)	35	21
Feb. 11	LSU	(H)	50	49
Feb. 13	Vanderbilt	(A)	39	47
Feb. 14	Sewanee	(A)	39	28
Feb. 15	Sewanee	(A)	46	31
Feb. 26	Georgia	(A)	31	36
Feb. 28	Alabama	(N1)	16	38

(N1) SEC Tournament, Louisville, Ky.

 1941-42 Won 11, Lost 6 (9-5 SEC)
 COACH: Ralph Jordan

			AU	Opp.
Dec. 18	Mississippi State	(A)	39	29
Dec. 19	Ole Miss	(A)	34	31
Jan. 16	Vanderbilt	(A)	35	33
Jan. 23	Tennessee	(A)	23	43
Jan. 26	Vanderbilt	(H)	50	45
Jan. 31	Georgia Tech	(A)	42	48
Feb. 3	Georgia Tech	(H)	43	38
Feb. 6	Georgia	(A)	32	28
Feb. 13	Georgia	(H)	53	41
Feb. 14	Mississippi State	(H)	40	41
Feb. 16	LSU	(A)	49	63
Feb. 17	Tulane	(A)	41	50
Feb. 20	Florida	(H)	47	23
Feb. 21	Florida	(H)	38	36
Feb. 26	Vanderbilt	(N1)	36	34
Feb. 27	Tulane	(N1)	45	36
Feb. 28	Kentucky	(N1)	31	40

(N1) SEC Tournament, Louisville, Ky.


BOB EVANS

 1943, 45
 2 Year Career
 Record: 4-28
 (3-18 SEC)

 1942-43 Won 1, Lost 14 (1-12 SEC)
 COACH: Bob Evans

			AU	Opp.
Dec. 11	Mississippi State	(A)	35	41
Dec. 12	Mississippi State	(A)	26	36
Dec. 17	Mississippi State	(H)	37	38
Dec. 18	Mississippi State	(H)	40	44
Jan. 11	Vanderbilt	(A)	39	54
Jan. 15	507 Paratrooper Infantry	(H)	30	40
Jan. 22	Georgia Tech	(H)	32	59
Jan. 23	Vanderbilt	(H)	43	48
Jan. 29	Tennessee	(A)	23	57
Jan. 30	Georgia Tech	(A)	21	53
Feb. 5	Georgia	(H)	47	32
Feb. 6	LSU	(H)	37	62
Feb. 8	Tulane	(H)	30	50
Feb. 13	Georgia	(A)	31	51
Feb. 25	LSU	(N1)	38	67

(N1) SEC Tournament, Louisville, Ky.

1943-44 (No Team)

 1944-45 Won 3, Lost 14 (2-6 SEC)
 COACH: Bob Evans

			AU	Opp.
	Gunter Field		40	44
Jan. 13	Mercer	(H)	36	41
Jan. 18	Georgia	(A)	50	59
Jan. 20	Georgia Tech	(H)	41	74
Feb. 2	Mercer	(A)	34	40
Feb. 3	Georgia	(H)	43	59
Feb. 9	Jacksonville Navy	(A)	43	80
Feb. 10	Jacksonville Navy	(A)	23	51

Feb. 12	Florida	(H)	43	58
Feb. 13	Florida	(H)	42	40
Feb. 17	Georgia Tech	(A)	39	53
	Gunter Field		52	39
	Maxwell Field		41	48
	Maxwell Field		31	72
Feb. 19	Florida	(A)	43	41
Feb. 20	Florida	(A)	48	62
Feb. 29	Tennessee	(N1)	26	56

(N1) SEC Tournament, Louisville, Ky.

 1945-46 Won 7, Lost 9 (7-6 SEC)
 COACH: Ralph Jordan

			AU	Opp.
Dec. 10	Mississippi State	(H)	55	47
Dec. 11	Mississippi State	(H)	37	26
Jan. 4	Georgia Tech	(A)	22	45
	Georgia	(A)	37	38
Jan. 16	Georgia Tech	(H)	26	53
Jan. 21	Georgia	(H)	40	37
	Maxwell Field		41	48
	Maxwell Field		35	36
Jan. 29	Florida	(H)	49	36
Jan. 30	Florida	(H)	51	40
	Tulane	(H)	48	56
Feb. 8	Florida	(A)	60	53
Feb. 9	Florida	(A)	34	53
Feb. 15	Mississippi State	(A)	40	30
Feb. 16	Mississippi State	(A)	31	39
Feb. 28	Kentucky	(N1)	24	69

(N1) SEC Tournament, Louisville, Ky.

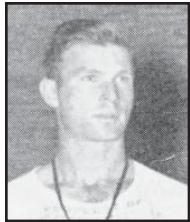

V.J. EDNEY

 1947
 1 Year Career
 Record: 3-18
 (1-15 SEC)

 1946-47 Won 3, Lost 18 (1-15 SEC)
 COACH: V.J. Edney

			AU	Opp.
	Maxwell Field		65	38
Dec. 13	Ole Miss	(A)	38	58
Dec. 14	Mississippi State	(A)	35	61
	Mercer		54	55
Jan. 11	Tennessee	(H)	30	66
Jan. 15	Georgia Tech	(H)	42	55
Jan. 17	Florida	(A)	32	48
Jan. 18	Florida	(A)	28	39
Jan. 24	Vanderbilt	(H)	37	38
Jan. 25	Georgia	(H)	40	44
Jan. 29	Georgia Tech	(A)	49	65
Feb. 1	Vanderbilt	(A)	58	59
Feb. 3	Tennessee	(A)	27	63
Feb. 7	Florida	(H)	42	48
Feb. 8	Florida	(H)	36	30
	Maxwell Field		57	34
	Tulane		35	66
Feb. 15	LSU	(A)	53	76
	Mercer		47	71
	Georgia	(A)	45	60
Feb. 28	Kentucky	(N1)	18	84

(N1) SEC Tournament, Louisville, Ky.


DANNY DOYLE

 1948-49
 2 Year Career
 Record: 21-25
 (12-18 SEC)

 1947-48 Won 12, Lost 10 (7-7 SEC)
 COACH: Danny Doyle

			AU	Opp.
Dec. 6	Mississippi State	(H)	35	49

Dec. 12	Florida	(A)	43	41
Dec. 13	Florida	(A)	39	47
	Tulane	(A)	37	70
	Illinois Wesleyan		44	42
	Washington	(A)	29	59
Jan. 12	Ole Miss	(H)	59	50
Jan. 16	Georgia	(H)	52	41
Jan. 19	Mercer	(A)	72	53
Jan. 21	Vanderbilt	(H)	46	41
Jan. 23	LSU	(A)	51	48
Jan. 30	Georgia Tech	(H)	38	31
Feb. 2	Vanderbilt	(A)	47	55
Feb. 5	Florida	(H)	53	50
Feb. 6	Florida	(H)	37	39
Feb. 12	Oglethorpe	(H)	55	23
Feb. 13	Oglethorpe	(H)	65	31
	Mercer		46	63
Feb. 21	Georgia	(A)	36	74
Feb. 25	Georgia Tech	(A)	43	50
Feb. 28	Howard	(A)	33	32
Mar. 4	Tulane	(N1)	40	47

(N1) SEC Tournament, Louisville, Ky.

 1948-49 Won 9, Lost 15 (5-11 SEC)
 COACH: Danny Doyle

			AU	Opp.
Dec. 3	Howard	(A)	57	30
Dec. 4	Birmingham Southern	(A)	40	32
Dec. 11	Mississippi State	(H)	53	54
Dec. 21	Alabama	(N1)	45	46
Dec. 27	Baylor	(N2)	44	59
Dec. 28	Colorado State	(N2)	41	46
Dec. 29	Southern Methodist	(N2)	41	59
Jan. 5	Alabama	(H)	38	45
Jan. 8	Florida	(A)	45	61
Jan. 11	Georgia Tech	(H)	41	33
Jan. 14	Georgia	(A)	52	55
Jan. 17	Ole Miss	(A)	43	47
Jan. 18	Mississippi State	(A)	43	47
Jan. 22	Vanderbilt	(H)	48	46
Jan. 27	Alabama	(A)	37	39
Jan. 31	Tulane	(H)	51	56
Feb. 5	Vanderbilt	(A)	42	52
	Troy State		69	44
	Livingston State		49	44
Feb. 17	Florida	(H)	44	43
	Georgia		53	47
Feb. 23	Georgia Tech	(A)	57	66
Feb. 28	Ole Miss	(H)	65	61
Mar. 4	Kentucky	(N3)	39	70

 (N1) Birmingham, Ala.
 (N2) All-College Classic, Oklahoma City, Okla.
 (N3) SEC Tournament, Louisville, Ky.

JOEL EAVES

 1950-63
 14 Year Career
 Record: 213-100
 (124-75 SEC)

1949-50 Won 17, Lost 7 (12-6 SEC)

 COACH: Joel Eaves
 CAPTAIN: Bill Lynn

			AU	Opp.
Dec. 1	Birmingham Southern	(H)	79	49
Dec. 2	Howard	(A)	59	36
Dec. 9	Ole Miss	(H)	64	60
Dec. 10	Howard	(H)	73	49
Dec. 13	Troy State	(H)	77	40
Dec. 20	Alabama	(H)	45	40
Jan. 4	Birmingham Southern	(A)	70	48
Jan. 10	Georgia Tech	(A)	49	65
Jan. 12	Mississippi State	(A)	65	64
Jan. 14	Florida	(H)	72	46
Jan. 21	Vanderbilt	(H)	47	58
Jan. 28	Alabama	(A)	66	58
Jan. 30	Ole Miss	(A)	77	63
Feb. 1	Mississippi State	(A)	65	60
Feb. 4	LSU	(H)	70	66
Feb. 6	Vanderbilt	(A)	51	63
Feb. 9	Georgia	(H)	67	54



Feb. 11	Tulane	(A)	64	60
Feb. 13	LSU	(A)	61	76
Feb. 18	Alabama	(H)	67	58
Feb. 20	Florida	(A)	41	43
Feb. 22	Georgia Tech	(H)	53	61
Feb. 25	Georgia	(A)	55	46
Mar. 3	LSU	(N1)	45	73

1950-51 Won 12, Lost 10 (6-8 SEC)
 COACH: Joel Eaves
 CAPTAIN: Don Lanford

			AU	Opp.
Nov. 27	Troy State	(H)	96	57
Nov. 30	Birmingham Southern	(A)	57	56
Dec. 1	Howard	(A)	70	57
Dec. 6	Birmingham Southern	(H)	69	57
Dec. 9	Ole Miss	(H)	61	65
Dec. 13	Howard	(H)	70	53
Dec. 19	Alabama	(A)	46	70
Jan. 5	Kentucky (NR,3)	(A)	35	79
Jan. 6	Vanderbilt	(A)	51	61
Jan. 8	Tennessee	(A)	63	59
Jan. 13	Georgia (ot)	(H)	69	68
Jan. 18	Alabama	(H)	64	65
Jan. 27	Georgia	(A)	61	49
Jan. 31	Georgia Tech	(A)	44	64
Feb. 3	Tulane	(H)	92	71
Feb. 5	LSU	(H)	74	75
Feb. 10	Alabama	(A)	44	63
Feb. 14	Georgia Tech	(H)	75	63
Feb. 17	Florida	(A)	61	82
Feb. 23	Florida (ot)	(H)	83	77
Feb. 24	Mississippi State	(H)	92	85
Mar. 2	Kentucky (NR,1)	(N1)	54	84

1951-52 Won 14, Lost 12 (6-8 SEC)
 COACH: Joel Eaves
 CAPTAIN: Roger Weldon

			AU	Opp.
Nov. 27	Troy State	(H)	83	58
Nov. 29	Birmingham Southern	(A)	65	59
Nov. 30	Howard	(A)	69	39
Dec. 4	Maxwell Field	(H)	75	41
Dec. 5	Howard	(H)	88	51
Dec. 8	Georgia	(A)	62	48
Dec. 15	Birmingham Southern	(H)	79	46
Dec. 19	Maxwell Field	(A)	63	54
Dec. 28	Davidson	(N1)	66	59
Dec. 29	Georgia Tech	(N1)	62	79
Dec. 29	South Carolina	(N1)	67	70
Jan. 3	Florida	(A)	63	64
Jan. 9	Georgia Tech	(A)	54	56
Jan. 12	Vanderbilt	(H)	61	73
Jan. 18	Mississippi State	(A)	68	61
Jan. 19	Ole Miss	(A)	58	76
Jan. 26	Georgia	(H)	65	51
Jan. 30	Kentucky	(H)	48	88
Feb. 2	Alabama	(H)	60	62
Feb. 8	Florida	(H)	61	52
Feb. 9	Tennessee	(H)	60	55
Feb. 13	Georgia Tech	(H)	50	58
Feb. 16	LSU	(A)	64	70
Feb. 18	Tulane	(A)	63	61
Feb. 23	Alabama	(A)	50	63
Feb. 28	Alabama	(N2)	49	63

1952-53 Won 13, Lost 8 (6-7 SEC)
 COACH: Joel Eaves
 CAPTAIN: Bubber Farish

			AU	Opp.
Dec. 2	Howard	(H)	80	52
Dec. 6	Howard	(A)	80	74
Dec. 10	Georgia Tech	(H)	71	61
Dec. 13	Birmingham Southern	(A)	87	61
Dec. 19	Georgia	(N1)	71	49
Jan. 2	Memphis State	(N2)	78	64
Jan. 3	Ole Miss	(N2)	55	65
Jan. 6	Birmingham Southern	(H)	84	59
Jan. 9	Georgia	(A)	64	59

Jan. 14	Georgia Tech	(A)	61	79
Jan. 17	Alabama	(A)	51	61
Jan. 21	Georgia	(H)	78	69
Jan. 26	Tennessee	(A)	70	72
Jan. 31	Mississippi State	(H)	82	60
Feb. 4	Florida	(H)	62	66
Feb. 7	Vanderbilt	(A)	71	66
Feb. 11	Ole Miss	(H)	72	65
Feb. 14	LSU (NR,8)	(H)	57	65
Feb. 16	Tulane	(H)	65	70
Feb. 21	Florida	(A)	67	71
Feb. 28	Alabama	(H)	78	73

(N1) Birmingham, Ala.
 (N2) Memphis Invitational, Memphis, Tenn.

1953-54 Won 16, Lost 8 (8-6 SEC)
 COACH: Joel Eaves
 CAPTAIN: Bob Miller

			AU	Opp.
Dec. 1	Birmingham Southern	(H)	81	50
Dec. 4	Birmingham Southern	(A)	93	66
Dec. 5	Howard (ot)	(A)	70	63
Dec. 12	Georgia Tech	(N1)	83	56
Dec. 18	Georgia	(N2)	75	73
Dec. 19	Alabama	(N2)	62	70
Dec. 30	Vanderbilt (NR,19)	(A)	48	96
Jan. 2	Mississippi State	(N2)	76	75
Jan. 5	Howard	(H)	84	56
Jan. 9	Mississippi State	(A)	74	79
Jan. 11	Ole Miss	(A)	66	61
Jan. 16	Alabama	(A)	58	70
Jan. 20	Georgia Tech	(H)	80	56
Jan. 23	Georgia	(A)	81	66
Jan. 29	Florida	(A)	83	76
Feb. 6	Vanderbilt	(H)	76	73
Feb. 8	Georgia Tech	(A)	59	53
Feb. 13	Florida	(H)	85	65
Feb. 15	Georgia	(H)	80	61
Feb. 20	LSU (NR,13)	(A)	59	77
Feb. 22	Tulane	(A)	65	62
Feb. 27	Kentucky (NR,2)	(N1)	79	109
Mar. 1	Tennessee	(H)	86	92
Mar. 5	Alabama	(H)	55	57

(N1) Montgomery, Ala.
 (N2) Birmingham, Ala.

1954-55 Won 11, Lost 9 (6-8 SEC)
 COACH: Joel Eaves
 CAPTAIN: Bill Kirkpatrick

			AU	Opp.
Dec. 4	Birmingham Southern	(H)	90	77
Dec. 11	Jacksonville State	(H)	78	67
Dec. 17	Washington & Lee	(N1)	91	81
Dec. 18	Tennessee	(N1)	73	64
Jan. 5	Howard	(H)	98	77
Jan. 8	Mississippi State	(H)	79	58
Jan. 10	Ole Miss	(H)	85	81
Jan. 15	Alabama (20,16)	(N2)	78	99
Jan. 22	Georgia	(A)	83	88
Jan. 26	Georgia Tech	(H)	70	73
Jan. 29	Florida	(H)	91	69
Jan. 31	Georgia	(H)	78	76
Feb. 5	Vanderbilt (NR,20)	(A)	74	79
Feb. 7	Georgia Tech	(A)	67	75
Feb. 12	Florida	(A)	70	66
Feb. 19	LSU	(H)	75	71
Feb. 21	Tulane	(H)	79	90
Feb. 26	Kentucky (NR,2)	(A)	59	93
Feb. 28	Tennessee	(A)	77	86
Mar. 5	Alabama* (NR,11)	(N2)	80	84

(N1) Blue-Gray Tournament, Montgomery, Ala.
 (N2) Montgomery, Ala.

1955-56 Won 11, Lost 10 (8-6 SEC)
 COACH: Joel Eaves
 CAPTAIN: Jim O'Donnell

			AU	Opp.
Dec. 3	Birmingham Southern	(H)	81	64
Dec. 10	Howard	(H)	97	54
Dec. 16	Texas	(N1)	76	83
Dec. 17	Eastern Kentucky	(N1)	71	93
Dec. 20	Oklahoma City (NR,15)	(A)	58	76
Dec. 21	Rice (2ot)	(A)	80	82

Jan. 2	Florida	(H)	89	77
Jan. 7	Mississippi State	(A)	81	68
Jan. 9	Ole Miss	(A)	69	76
Jan. 14	Alabama (NR,19)	(N2)	77	86
Jan. 21	Georgia	(A)	60	59
Jan. 28	Jacksonville State	(H)	73	64
Feb. 4	Kentucky (NR,7)	(N2)	81	82
Feb. 7	Georgia Tech (ot)	(H)	77	74
Feb. 11	Florida	(H)	77	73
Feb. 13	Georgia	(H)	96	80
Feb. 18	LSU	(A)	80	71
Feb. 20	Tulane	(A)	75	86
Feb. 25	Tennessee	(H)	87	91
Feb. 27	Vanderbilt (NR,7)	(H)	74	65
Mar. 2	Alabama (NR,3)	(N2)	82	93

(N1) Blue-Gray Tournament, Montgomery, Ala.
 (N2) Montgomery, Ala.

1956-57 Won 13, Lost 8 (8-6 SEC)
 COACH: Joel Eaves
 CAPTAIN: Henry Sturkie

			AU	Opp.
Dec. 4	Jacksonville State	(H)	72	65
Dec. 8	Rice	(N1)	88	68
Dec. 17	Clemson	(N2)	89	64
Dec. 18	St. Joseph's	(N2)	66	64
Dec. 19	Wake Forest	(N2)	48	58
Jan. 2	Howard	(H)	101	70
Jan. 5	Mississippi State	(H)	86	66
Jan. 7	Ole Miss	(H)	88	66
Jan. 12	Georgia	(A)	72	75
Jan. 19	Alabama (ot)	(N3)	92	88
Jan. 22	Georgia Tech	(H)	74	81
Jan. 26	Georgia	(H)	73	66
Jan. 28	Florida	(H)	76	61
Feb. 2	Vanderbilt	(A)	78	83
Feb. 4	Georgia Tech (ot)	(A)	67	76
Feb. 9	Florida	(A)	73	70
Feb. 16	LSU	(H)	99	62
Feb. 18	Tulane	(H)	78	54
Feb. 23	Tennessee	(A)	75	85
Feb. 25	Kentucky (NR,3)	(A)	85	103
Mar. 1	Alabama (2ot)	(N3)	79	81

(N1) Birmingham, Ala.
 (N2) Carusel Tournament, Charlotte, N.C.
 (N3) Montgomery, Ala.

1957-58 Won 16, Lost 6 (11-3 SEC)
 COACH: Joel Eaves
 CAPTAIN: Rex Frederick

			AU	Opp.
Dec. 3	Jacksonville State	(H)	89	50
Dec. 7	Wake Forest	(N1)	78	66
Dec. 13	TCU	(N2)	75	63
Dec. 14	Mississippi State	(N2)	37	52
Dec. 19	Southern Methodist	(A)	65	75
Dec. 20	Baylor	(A)	53	62
Dec. 30	Howard	(H)	106	47
Jan. 4	Mississippi State (NR,9)	(A)	42	70
Jan. 6	Ole Miss	(A)	71	51
Jan. 11	Florida	(A)	66	90
Jan. 18	Alabama	(N3)	65	83
Jan. 22	Georgia Tech	(A)	80	72
Jan. 25	Georgia	(N1)	90	62
Feb. 1	Vanderbilt	(H)	77	69
Feb. 3	Georgia Tech	(H)	99	78
Feb. 8	Georgia	(H)	75	73
Feb. 10	Florida	(H)	76	69
Feb. 15	LSU	(A)	76	58
Feb. 17	Tulane	(A)	63	49
Feb. 22	Tennessee (NR,20)	(H)	72	66
Feb. 24	Kentucky (NR,13)	(N2)	64	63
Mar. 1	Alabama (16,NR)	(N3)	67	65

(N1) Columbus, Ga.
 (N2) Birmingham Classic, Birmingham, Ala.
 (N3) Montgomery, Ala.

- 1958 Final Wire Service Poll
 Associated Press
- | | |
|------------------|---------------|
| 1. West Virginia | 7. Kansas |
| 2. Cincinnati | 8. Notre Dame |
| 3. Kansas State | 9. Kentucky |
| 4. San Francisco | 10. Duke |
| 5. Temple | 16. Auburn |
| 6. Maryland | |



1958-59 Won 20, Lost 2 (12-2 SEC)
 COACH: Joel Eaves
 CAPTAINS: Rex Frederick, Jimmy Lee

		AU	Opp.
Dec. 2	Jacksonville State	(H) 111	54
Dec. 6	Baylor	(H) 71	60
Dec. 17	Florida State (13,NR)	(H) 95	74
Dec. 19	Wyoming (13,NR)	(N1) 70	47
Dec. 20	Alabama (13,NR)	(N1) 79	60
Dec. 27	Florence State (8,NR)	(H) 104	78
Dec. 29	Florida State (8,NR)	(A) 69	62
Jan. 3	Mississippi State (9,8)	(H) 97	66
Jan. 5	Ole Miss (9,NR)	(H) 60	47
Jan. 10	Florida (6,NR)	(A) 63	54
Jan. 17	Alabama (5,NR)	(N2) 57	55
Jan. 21	Georgia Tech (5,NR)	(H) 66	55
Jan. 24	Georgia (5,NR)	(A) 81	61
Jan. 31	Vanderbilt (4,NR)	(A) 64	61
Feb. 3	Georgia Tech (4,NR)	(A) 51	40
Feb. 7	Georgia (4,NR)	(H) 95	69
Feb. 9	Florida (4,NR)	(H) 93	71
Feb. 14	LSU (4,NR)	(H) 115	67
Feb. 16	Tulane (4,NR)	(H) 79	56
Feb. 21	Kentucky (2,3)	(A) 56	75
Feb. 23	Tennessee (2,NR)	(A) 55	56
Feb. 28	Alabama (6,NR)	(N2) 69	50

(N1) Birmingham Classic, Birmingham, Ala.
 (N2) Montgomery, Ala.

1959 Final Wire Service Polls

Associated Press	United Press International
1. Kansas State	1. Kansas State
2. Kentucky	2. Kentucky
3. Miss. State	3. Michigan State
4. Bradley	4. Cincinnati
5. Cincinnati	5. N.C. State
6. N.C. State	6. North Carolina
7. Michigan State	7. Miss. State
8. Auburn	8. Bradley
9. North Carolina	9. California
10. West Virginia	10. Auburn

1959-60 Won 19, Lost 3 (12-2 SEC)
 COACH: Joel Eaves
 CAPTAIN: Henry Hart
SEC CHAMPIONS

		AU	Opp.
Dec. 1	Florence State	(H) 95	69
Dec. 5	Troy State	(H) 72	46
Dec. 7	Howard	(H) 104	57
Dec. 12	Florida State	(H) 62	58
Dec. 18	Navy	(N1) 61	68
Dec. 19	Alabama	(N1) 59	52
Dec. 28	Florida State	(A) 76	63
Jan. 2	Mississippi State	(A) 64	48
Jan. 4	Ole Miss	(A) 56	64
Jan. 9	Florida	(A) 73	69
Jan. 16	Alabama	(N2) 69	66
Jan. 19	Georgia Tech (NR,6)	(A) 66	59
Jan. 23	Georgia	(A) 59	68
Jan. 30	Vanderbilt	(H) 55	54
Feb. 2	Georgia Tech (NR,6)	(H) 48	45
Feb. 6	Georgia	(H) 72	45
Feb. 8	Florida	(H) 89	51
Feb. 13	LSU (17,NR)	(A) 63	61
Feb. 15	Tulane (ot) (17,NR)	(A) 53	51
Feb. 20	Kentucky (17,NR)	(H) 61	60
Feb. 22	Tennessee (17,NR)	(H) 72	63
Feb. 27	Alabama (ot) (13,NR)	(N2) 63	61

(N1) Birmingham Classic, Birmingham, Ala.
 (N2) Montgomery, Ala.

1960 Final Wire Service Polls

Associated Press	United Press International
1. Cincinnati	1. California
2. California	2. Cincinnati
3. Ohio State	3. Ohio State
4. Bradley	4. Bradley
5. West Virginia	5. Utah
6. Utah	6. West Virginia
7. Indiana	7. Utah State
8. Utah State	8. Georgia Tech
9. St. Bonaventure	9. Villanova
10. Miami (Fla.)	10. Indiana
11. Auburn	17. Auburn

1960-61 Won 15, Lost 7 (8-6 SEC)
 COACH: Joel Eaves
 CAPTAINS: Porter Gilbert, Jimmy Fibbe

		AU	Opp.
Dec. 1	Livingston	(H) 90	50
Dec. 3	Huntingdon	(H) 66	44
Dec. 10	Florida State	(H) 74	57
Dec. 16	Virginia Tech (11,NR)	(N1) 76	73
Dec. 17	Alabama (11,NR)	(N1) 74	62
Jan. 2	Florence State (9,NR)	(H) 76	50
Jan. 7	Mississippi State (10,NR)	(H) 48	56
Jan. 9	Ole Miss	(H) 51	40
Jan. 13	Florida	(A) 53	58
Jan. 17	Florida State	(N2) 74	67
Jan. 21	Georgia	(N2) 78	68
Jan. 24	Georgia Tech (ot)	(H) 43	48
Jan. 28	Alabama (ot)	(N3) 66	71
Feb. 4	Vanderbilt	(A) 53	58
Feb. 7	Georgia Tech	(A) 38	36
Feb. 11	Georgia	(H) 73	69
Feb. 13	Florida	(H) 60	78
Feb. 18	LSU	(H) 69	65
Feb. 20	Tulane	(H) 63	44
Feb. 25	Tennessee	(A) 41	38
Feb. 27	Kentucky	(A) 51	77
Mar. 4	Alabama	(N3) 80	69

(N1) Birmingham Classic, Birmingham, Ala.
 (N2) Columbus, Ga.
 (N3) Montgomery, Ala.

1961-62 Won 18, Lost 6 (11-3 SEC)
 COACH: Joel Eaves
 CAPTAIN: Bill Ross

		AU	Opp.
Dec. 4	Jacksonville State	(H) 73	37
Dec. 6	Southwestern Louisiana	(H) 62	46
Dec. 9	Florida State	(H) 52	56
Dec. 15	LSU	(N1) 67	50
Dec. 16	Virginia Tech	(N1) 77	63
Dec. 22	Texas A&M	(N2) 50	62
Dec. 23	Houston	(N2) 49	54
Dec. 30	Florida State	(A) 62	57
Jan. 2	Chattanooga	(H) 67	47
Jan. 6	Mississippi State (NR,9)	(A) 48	51
Jan. 8	Ole Miss	(A) 64	58
Jan. 13	Florida	(A) 40	43
Jan. 20	Alabama	(N3) 60	50
Jan. 23	Georgia Tech	(A) 52	40
Jan. 27	Georgia	(N4) 83	47
Feb. 3	Vanderbilt	(H) 89	68
Feb. 5	Georgia Tech	(H) 48	39
Feb. 10	Georgia	(H) 74	49
Feb. 12	Florida	(H) 64	60
Feb. 17	LSU	(A) 55	50
Feb. 19	Tulane	(A) 81	64
Feb. 24	Tennessee	(H) 60	51
Feb. 26	Kentucky (NR,3)	(H) 60	63
Mar. 4	Alabama	(N3) 62	49

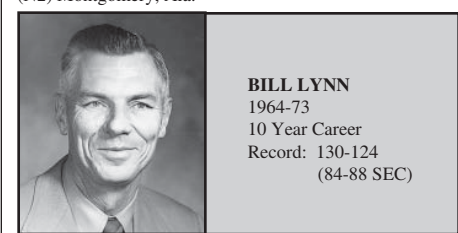
(N1) Birmingham Classic, Birmingham, Ala.
 (N2) Houston Classic, Houston, Texas
 (N3) Montgomery, Ala.
 (N4) Columbus, Ga.

1962-63 Won 18, Lost 4 (10-4 SEC)
 COACH: Joel Eaves
 CAPTAIN: Layton Johns

		AU	Opp.
Dec. 4	Howard	(H) 69	50
Dec. 8	Florida State	(H) 65	47
Dec. 14	Texas Tech	(H) 86	57
Dec. 17	Chattanooga	(H) 79	37
Dec. 19	Spring Hill	(H) 71	51
Dec. 21	Florida State (2ot)	(A) 77	70
Dec. 28	Xavier	(N1) 64	57
Dec. 29	Houston (ot)	(N1) 71	69
Jan. 5	Mississippi State	(H) 53	62
Jan. 7	Ole Miss	(H) 79	44
Jan. 12	Florida	(A) 81	56
Jan. 19	Alabama (ot)	(N2) 81	78
Jan. 22	Georgia Tech (NR,9)	(A) 64	69
Jan. 26	Georgia	(A) 78	62
Feb. 2	Vanderbilt	(A) 62	59
Feb. 9	Georgia (ot)	(H) 70	67
Feb. 11	Florida	(H) 88	59

Feb. 16	LSU	(H) 82	57
Feb. 18	Tulane	(H) 63	61
Feb. 23	Kentucky (9,NR)	(A) 59	78
Feb. 25	Tennessee	(A) 47	55
Mar. 2	Alabama (ot)	(N2) 74	67

(N1) Sugar Bowl Tournament, New Orleans, La.
 (N2) Montgomery, Ala.



BILL LYNN
 1964-73
 10 Year Career
 Record: 130-124
 (84-88 SEC)

1963-64 Won 11, Lost 12 (6-8 SEC)
 COACH: Billy Lynn
 CAPTAINS: Larry Chapman, John Blackwell

		AU	Opp.
Dec. 3	Howard	(H) 102	44
Dec. 7	Florida State	(A) 67	69
Dec. 14	Southern Mississippi	(H) 80	74
Dec. 19	Texas Tech	(A) 71	83
Dec. 20	SMU	(A) 70	84
Dec. 27	Athens College	(H) 83	51
Dec. 30	Duke	(N1) 67	84
Dec. 31	Loyola (New Orleans)	(N1) 62	52
Jan. 4	Mississippi State (ot)	(A) 64	63
Jan. 6	Ole Miss (ot)	(A) 58	59
Jan. 11	Florida	(A) 46	63
Jan. 18	Alabama	(N2) 72	86
Jan. 25	Georgia	(A) 85	77
Jan. 28	Florida State	(H) 63	59
Feb. 1	Vanderbilt (NR,5)	(H) 81	63
Feb. 3	Georgia Tech	(H) 57	62
Feb. 8	Georgia	(H) 67	71
Feb. 10	Florida	(H) 79	58
Feb. 15	LSU	(A) 66	86
Feb. 17	Tulane	(A) 78	72
Feb. 22	Kentucky (NR,3)	(N2) 79	99
Feb. 24	Tennessee	(H) 62	68
Feb. 29	Alabama	(N2) 83	76

(N1) Sugar Bowl Tournament, New Orleans, La.
 (N2) Montgomery, Ala.

1964-65 Won 16, Lost 9 (11-5 SEC)
 COACH: Bill Lynn
 CAPTAIN: Freddie Guy

		AU	Opp.
Dec. 1	Georgia Tech	(A) 60	52
Dec. 5	Florida State	(H) 92	68
Dec. 15	Houston	(N1) 48	50
Dec. 17	Rice	(N1) 94	71
Dec. 21	Georgia Southern	(H) 80	64
Dec. 27	Clemson	(N2) 65	77
Dec. 29	Furman	(N2) 107	86
Jan. 2	Mississippi State	(A) 71	70
Jan. 4	Ole Miss	(A) 77	53
Jan. 9	Florida	(H) 74	63
Jan. 11	Ole Miss	(H) 67	52
Jan. 16	Alabama	(N3) 93	68
Jan. 18	Kentucky	(A) 67	73
Jan. 23	Georgia	(H) 95	65
Jan. 25	Florida State	(A) 55	58
Jan. 30	Vanderbilt	(A) 77	105
Feb. 6	Georgia	(A) 60	62
Feb. 7	Florida	(A) 83	79
Feb. 13	LSU	(H) 101	60
Feb. 15	Tulane	(H) 87	73
Feb. 20	Kentucky	(H) 88	69
Feb. 22	Tennessee (NR,8)	(A) 38	69
Feb. 26	Georgia Tech	(H) 54	59
Mar. 1	Vanderbilt (NR,9)	(H) 64	79
Mar. 6	Alabama	(N3) 80	60

(N1) Bluebonnet Bowl Tournament, Houston, Texas
 (N2) Poinsettia Classic, Greenville, S.C.
 (N3) Montgomery, Ala.



1965-66 Won 16, Lost 10 (8-8 SEC)
COACH: Bill Lynn
CAPTAIN: Lee DeFore

		AU	Opp.
Dec. 2	Rice	(H) 91	74
Dec. 7	Jacksonville State	(H) 78	50
Dec. 11	Jacksonville Univ.	(H) 77	69
Dec. 18	Georgia Tech	(A) 79	74
Dec. 20	Columbia (ot)	(N1) 76	75
Dec. 21	Florida State	(N1) 59	58
Dec. 27	Florida State	(N2) 80	64
Dec. 29	Dayton	(N3) 71	85
Dec. 30	Houston	(N3) 76	89
Jan. 3	Mississippi State	(H) 72	83
Jan. 8	LSU	(A) 74	66
Jan. 11	Tulane	(A) 92	58
Jan. 17	Tennessee	(H) 51	47
Jan. 22	Alabama	(N4) 90	71
Jan. 24	Florida	(H) 64	68
Jan. 29	Kentucky (NR,2)	(A) 78	115
Jan. 31	Vanderbilt (NR,4)	(A) 63	68
Feb. 5	Ole Miss	(A) 70	55
Feb. 9	Florida	(A) 86	66
Feb. 12	Kentucky (NR,1)	(H) 64	77
Feb. 14	Vanderbilt (NR,5)	(H) 76	91
Feb. 16	Georgia	(A) 74	83
Feb. 19	Georgia Tech	(H) 90	73
Feb. 23	Georgia	(H) 74	63
Feb. 26	Ole Miss	(H) 86	74
Mar. 5	Alabama	(N4) 83	88

(N1) Tampa Invitational, Tampa, Fla.

(N2) Pensacola, Fla.

(N3) Sugar Bowl Tournament, New Orleans, La.

(N4) Montgomery, Ala.

1966-67 Won 17, Lost 8 (12-6 SEC)
COACH: Bill Lynn
CAPTAIN: Bobby Buisson

		AU	Opp.
Dec. 1	Citadel	(A) 105	83
Dec. 6	Louisiana Tech	(H) 88	77
Dec. 10	Southwestern Louisiana	(H) 78	68
Dec. 16	Tennessee	(A1) 49	73
Dec. 17	Miami (Fla.)	(N1) 73	87
Dec. 21	Georgia Tech (ot)	(A) 76	78
Dec. 27	Florida State	(N2) 67	59
Dec. 28	TCU	(N2) 80	79
Dec. 31	Vanderbilt (NR,9)	(H) 64	51
Jan. 3	LSU	(H) 70	59
Jan. 7	Ole Miss	(A) 67	56
Jan. 9	Miss. State (ot) (NR,10)	(A) 54	59
Jan. 16	Vanderbilt	(A) 65	71
Jan. 21	Kentucky	(A) 58	60
Jan. 28	Georgia	(H) 73	64
Jan. 30	Florida	(H) 87	61
Feb. 1	Georgia	(A) 62	49
Feb. 8	LSU	(A) 80	63
Feb. 11	Alabama	(N3) 66	63
Feb. 13	Mississippi State	(H) 68	57
Feb. 18	Florida	(A) 59	79
Feb. 20	Ole Miss	(H) 86	67
Feb. 25	Tennessee (NR,9)	(H) 45	54
Feb. 27	Kentucky	(H) 60	49
Mar. 3	Alabama (ot)	(N3) 99	96

(A1,N1) Volunteer Invitational, Knoxville, Tenn.

(N2) Mobile Invitational, Mobile, Ala.

(N3) Montgomery, Ala.

1967-68 Won 13, Lost 13 (8-10 SEC)
COACH: Bill Lynn
CAPTAIN: Alex Howell

		AU	Opp.
Dec. 1	Citadel	(H) 70	73
Dec. 4	Vanderbilt (NR,9)	(A) 65	78
Dec. 9	Wake Forest	(A) 66	63
Dec. 16	Georgia Tech	(A) 63	52
Dec. 18	St. Bonaventure	(N1) 73	77
Dec. 19	Rutgers	(N1) 70	62
Dec. 27	Arkansas	(N2) 65	58
Dec. 28	Oklahoma City	(A2) 68	78
Dec. 29	Virginia Tech	(N2) 76	61
Jan. 3	LSU	(A) 72	76
Jan. 6	Ole Miss	(H) 90	71

Jan. 8	Mississippi State	(H) 62	66
Jan. 15	Vanderbilt (NR,8)	(H) 65	74
Jan. 20	Kentucky (NR,9)	(H) 74	73
Jan. 27	Georgia	(A) 74	76
Jan. 29	Florida	(A) 60	65
Jan. 31	Georgia	(H) 62	56
Feb. 7	LSU	(H) 74	69
Feb. 10	Alabama	(A) 63	64
Feb. 12	Mississippi State	(A) 74	72
Feb. 17	Florida	(H) 73	65
Feb. 19	Ole Miss	(A) 56	57
Feb. 24	Tennessee	(A) 53	52
Feb. 26	Kentucky (NR,5)	(A) 57	89
Mar. 2	Alabama	(H) 73	69
Mar. 3	Tennessee (ot)	(H) 54	63

(N1) Tampa Invitational, Tampa, Fla.

(A2,N2) All-College Tournament, Oklahoma City, Okla.

1968-69 Won 15, Lost 10 (10-8 SEC)

COACH: Bill Lynn

CAPTAIN: Tom Perry

		AU	Opp.
Nov. 30	South Carolina	(A) 49	51
Dec. 14	Ole Miss	(A) 75	64
Dec. 16	Mississippi State	(A) 59	65
Dec. 18	Southwestern Louisiana	(A) 76	80
Dec. 19	Louisiana Tech	(A) 97	84
Dec. 21	Clemson	(N1) 92	72
Dec. 27	Southern Mississippi	(N2) 73	70
Dec. 28	Xavier	(N2) 75	73
Jan. 4	Florida	(A) 59	68
Jan. 6	Georgia	(A) 69	74
Jan. 11	LSU	(H) 90	71
Jan. 15	Alabama	(H) 78	63
Jan. 20	Georgia	(H) 84	85
Jan. 25	Vanderbilt	(A) 92	79
Feb. 1	Tennessee	(A) 59	64
Feb. 3	Kentucky (NR,5)	(A) 93	105
Feb. 8	Florida (ot)	(H) 81	80
Feb. 12	Mississippi State	(H) 87	68
Feb. 15	LSU	(A) 81	93
Feb. 17	Alabama	(A) 60	53
Feb. 22	Vanderbilt	(H) 85	75
Feb. 24	Georgia Tech	(H) 87	85
Mar. 1	Tennessee	(H) 71	60
Mar. 3	Kentucky (NR,17)	(H) 86	90
Mar. 8	Ole Miss	(H) 80	70

(N1) Birmingham, Ala.

(N2) Mobile Classic, Mobile, Ala.

1969-70 Won 15, Lost 11 (11-7 SEC)

COACH: Bill Lynn

CAPTAINS: Carl Shetler, Bill Alexander

		AU	Opp.
Dec. 1	South Carolina (NR,1)	(H) 64	86
Dec. 4	Clemson	(A) 61	60
Dec. 6	Wake Forest	(H) 81	95
Dec. 13	Ole Miss	(H) 91	77
Dec. 15	Mississippi State	(H) 94	66
Dec. 17	North Carolina State	(A) 69	76
Dec. 19	St. Louis	(N1) 70	66
Dec. 20	Dartmouth	(N1) 85	76
Dec. 27	Buffalo	(N2) 84	61
Jan. 3	Florida	(H) 91	75
Jan. 5	Georgia	(H) 64	68
Jan. 10	LSU	(A) 79	70
Jan. 12	Alabama	(A) 86	77
Jan. 17	Georgia Tech	(A) 74	86
Jan. 19	Georgia	(A) 67	71
Jan. 24	Vanderbilt	(A) 84	75
Jan. 31	Tennessee	(H) 61	55
Feb. 2	Kentucky (NR,2)	(H) 83	84
Feb. 7	Florida	(A) 68	70
Feb. 11	Miss. State (ot)	(A) 71	69
Feb. 14	Alabama	(H) 121	78
Feb. 16	LSU	(H) 64	70
Feb. 21	Vanderbilt	(H) 74	92
Feb. 28	Tennessee	(A) 77	64
Mar. 2	Kentucky (NR,1)	(A) 81	102
Mar. 7	Ole Miss	(A) 67	66

(N1) Vanderbilt Classic, Nashville, Tenn.

(N2) Birmingham, Ala.

1970-71 Won 11, Lost 15 (8-10 SEC)
COACH: Bill Lynn
CAPTAIN: Jimmy Walker

		AU	Opp.
Dec. 1	Louisiana Tech	(H) 93	87
Dec. 3	South Carolina (NR,2)	(A) 69	86
Dec. 5	No. Carolina St. (NR,19)	(H) 91	85
Dec. 12	Ole Miss	(A) 96	108
Dec. 14	Mississippi State	(A) 73	70
Dec. 19	Georgia Tech	(N1) 76	87
Dec. 21	Houston	(A) 76	79
Dec. 29	Xavier	(N2) 86	73
Dec. 30	Old Dominion	(A2) 76	89
Jan. 2	Florida	(A) 60	66
Jan. 4	Georgia	(A) 79	58
Jan. 9	LSU	(H) 92	106
Jan. 11	Alabama	(H) 83	72
Jan. 14	Georgia Tech	(A) 81	90
Jan. 18	Georgia	(H) 76	77
Jan. 23	Vanderbilt	(A) 86	107
Jan. 30	Tennessee (NR,8)	(A) 68	90
Feb. 1	Kentucky (NR,11)	(A) 76	114
Feb. 6	Florida	(H) 85	70
Feb. 10	Mississippi State	(H) 92	68
Feb. 13	Alabama	(A) 92	76
Feb. 15	LSU	(A) 94	114
Feb. 20	Vanderbilt	(H) 96	94
Feb. 27	Tennessee (NR,17)	(H) 71	76
Mar. 1	Kentucky (NR,10)	(H) 83	102
Mar. 6	Ole Miss	(H) 86	85

(N1) Birmingham, Ala.

(A2,N2) Old Dominion Tournament, Norfolk, Va.

1971-72 Won 10, Lost 16 (6-12 SEC)

COACH: Bill Lynn

CAPTAIN: Henry Harris

		AU	Opp.
Dec. 1	South Carolina (NR,12)	(H) 63	84
Dec. 4	Athens College	(H) 95	71
Dec. 11	Georgia Tech	(A) 76	62
Dec. 13	Mississippi State	(H) 85	75
Dec. 16	Louisiana Tech	(A) 82	107
Dec. 18	Xavier	(N1) 60	71
Dec. 29	Furman	(A2) 103	78
Dec. 30	Clemson	(N2) 67	77
Jan. 3	Ole Miss	(H) 65	69
Jan. 8	Florida	(H) 79	74
Jan. 10	Georgia	(H) 99	93
Jan. 15	LSU	(A) 77	73
Jan. 22	Alabama	(A) 66	89
Jan. 24	Georgia	(A) 72	79
Jan. 29	Vanderbilt	(A) 77	85
Feb. 5	Tennessee	(H) 67	76
Feb. 7	Kentucky	(H) 72	78
Feb. 12	Florida	(A) 103	100
Feb. 14	LSU	(H) 85	77
Feb. 15	Georgia Tech	(H) 91	77
Feb. 19	Alabama	(H) 78	79
Feb. 21	Mississippi State	(A) 60	62
Feb. 26	Vanderbilt	(H) 87	93
Mar. 4	Tennessee	(A) 70	80
Mar. 6	Kentucky	(A) 67	102
Mar. 9	Ole Miss	(A) 83	89

(N1) Birmingham, Ala.

(N2) Poinsettia Tournament, Greenville, S.C.

1972-73 Won 6, Lost 20 (4-14 SEC)

COACH: Bill Lynn

CAPTAIN: Gary England

		AU	Opp.
Nov. 25	Georgia Tech	(A) 83	90
Dec. 1	South Alabama	(H) 64	68
Dec. 7	Eastern Illinois	(H) 82	75
Dec. 15	Southern Cal	(A1) 66	73
Dec. 16	Western Kentucky	(N1) 72	87
Dec. 18	Dayton	(A) 63	106
Dec. 19	Xavier	(A) 60	67
Jan. 2	Ole Miss	(A) 66	58
Jan. 6	Florida	(A) 55	65
Jan. 8	Georgia (ot)	(A) 72	84
Jan. 13	LSU	(H) 60	79
Jan. 15	Mississippi State	(H) 82	77
Jan. 20	Alabama (NR,11)	(H) 64	76

Jan. 22	Georgia	(H)	64	68
Jan. 27	Vanderbilt	(H)	81	77
Feb. 3	Tennessee	(A)	74	82
Feb. 5	Kentucky	(A)	57	88
Feb. 10	Florida (ot)	(H)	74	76
Feb. 12	LSU	(A)	74	76
Feb. 17	Alabama (NR,17)	(A)	75	87
Feb. 19	Mississippi State	(A)	87	94
Feb. 24	Vanderbilt	(A)	70	98
Feb. 26	Georgia Tech	(H)	79	69
Mar. 3	Kentucky	(H)	79	91
Mar. 5	Tennessee	(H)	72	80
Mar. 8	Ole Miss	(H)	77	73

(A1,N1) Trojan Classic, Los Angeles, Calif.


BOB DAVIS

 1974-78
 5 Year Career
 Record: 70-61
 (42-48 SEC)

1973-74 Won 10, Lost 16 (5-13 SEC)

 COACH: Bob Davis
 CAPTAIN: Mike Christian

			AU	Opp.
Nov. 30	Clemson	(A1)	72	87
Dec. 1	Jacksonville (NR,17)	(N1)	78	90
Dec. 4	Western Carolina	(H)	95	85
Dec. 8	Virginia Tech	(H)	76	74
Dec. 13	Georgia Tech	(A)	88	86
Dec. 21	UTEP	(A2)	56	68
Dec. 22	Lamar	(N2)	88	78
Jan. 5	Tennessee	(H)	77	89
Jan. 7	Ole Miss	(A)	65	93
Jan. 12	Kentucky	(A)	58	79
Jan. 14	Florida	(H)	81	92
Jan. 19	Vanderbilt (NR,8)	(A)	51	96
Jan. 21	Mississippi State	(A)	87	81
Jan. 26	LSU	(H)	76	87
Jan. 28	Georgia	(A)	82	85
Feb. 2	Alabama (NR,8)	(H)	64	73
Feb. 4	Tennessee	(A)	80	88
Feb. 9	Ole Miss	(H)	85	75
Feb. 11	Kentucky (ot)	(H)	99	97
Feb. 16	Florida	(A)	77	85
Feb. 18	Vanderbilt (NR,5)	(H)	79	89
Feb. 23	Mississippi State	(H)	60	67
Feb. 25	LSU	(A)	96	89
Feb. 27	Georgia Tech	(H)	92	70
Mar. 2	Georgia	(H)	97	84
Mar. 4	Alabama (NR,7)	(A)	84	97

 (A1,N1) IPTAY Tournament, Clemson, S.C.
 (A2,N2) Sun Bowl Tournament, El Paso, Texas

1974-75 Won 18, Lost 8 (12-6 SEC)

 COACH: Bob Davis
 CAPTAINS: Eddie Johnson, Gary Redding

			AU	Opp.
Dec. 2	South Florida	(H)	77	52
Dec. 7	Butler	(A)	74	71
Dec. 9	Western Carolina	(H)	85	77
Dec. 14	Virginia Tech	(A)	82	83
Dec. 27	Clemson	(N1)	59	63
Dec. 28	Navy	(N1)	73	69
Jan. 4	Tennessee	(A)	81	96
Jan. 6	Ole Miss	(H)	104	86
Jan. 11	Kentucky (NR,7)	(H)	90	85
Jan. 13	Florida	(A)	84	68
Jan. 15	Georgia Tech	(A)	87	75
Jan. 18	Vanderbilt	(H)	93	89
Jan. 20	Mississippi State	(H)	98	89
Jan. 25	LSU (20,NR)	(A)	87	78
Jan. 27	Georgia (14,NR)	(H)	65	64
Feb. 1	Alabama (14,9)	(A)	53	77
Feb. 3	Tennessee (NR,18)	(H)	62	59
Feb. 8	Ole Miss	(A)	70	72
Feb. 10	Kentucky (NR,5)	(A)	76	119
Feb. 15	Florida	(H)	76	75
Feb. 17	Vanderbilt	(A)	78	85

Feb. 22	Mississippi State	(A)	78	74
Feb. 24	LSU	(H)	110	94
Mar. 1	Georgia (ot)	(A)	90	93
Mar. 3	VCU	(H)	117	72
Mar. 8	Alabama (NR,7)	(H)	76	70

 *Minneapolis, Minn.
 (N1) Pillsbury's Best Tournament, Minneapolis, Minn.

1975-76 Won 16, Lost 10 (11-7 SEC)

 COACH: Bob Davis
 CAPTAINS: Eddie Johnson, Gary Redding

			AU	Opp.
Dec. 1	Butler	(H)	80	69
Dec. 3	Western Carolina (17,NR)	(A)	88	76
Dec. 13	South Florida (17,NR)	(A)	79	78
Dec. 19	SMU (17,NR) (ot)	(N1)	85	87
Dec. 20	Tulsa (17,NR)	(N1)	92	74
Dec. 26	Duke	(A)	74	85
Dec. 27	N.C. State (NR,9)	(A)	74	79
Jan. 3	LSU	(A)	102	86
Jan. 5	Ole Miss	(A)	72	66
Jan. 10	Alabama (NR,10)	(H)	62	63
Jan. 12	Mississippi State	(H)	75	70
Jan. 17	Georgia	(A)	94	70
Jan. 19	Tennessee (NR,9)	(A)	78	83
Jan. 24	Vanderbilt	(H)	59	71
Jan. 26	Kentucky (ot)	(H)	91	84
Jan. 31	Florida	(A)	92	86
Feb. 7	Alabama (NR,17)	(A)	75	86
Feb. 9	Mississippi State	(A)	74	75
Feb. 11	Georgia Tech	(H)	72	51
Feb. 14	Georgia	(H)	88	79
Feb. 16	Tennessee (NR,8) (ot)	(H)	73	72
Feb. 21	Vanderbilt	(A)	72	80
Feb. 23	Kentucky	(A)	82	93
Feb. 28	Florida	(H)	89	80
Mar. 6	LSU	(H)	90	80
Mar. 8	Ole Miss	(H)	103	88

(N1) Sun Carnival Classic, El Paso, Texas

1976-77 Won 13, Lost 13 (6-12 SEC)

 COACH: Bob Davis
 CAPTAINS: Eddie Johnson, Pepto Bolden

			AU	Opp.
Nov. 26	Jacksonville	(N1)	92	67
Nov. 29	Appalachian State	(H)	84	61
Dec. 1	Richmond	(H)	86	63
Dec. 4	Fairleigh Dickinson	(H)	86	59
Dec. 16	VCU	(A)	109	59
Dec. 28	Creighton (20,NR)	(N2)	76	81
Dec. 29	Rutgers (20,NR)	(N2)	78	75
Jan. 3	Alabama (20,4)	(H)	71	74
Jan. 5	Mississippi State	(H)	79	81
Jan. 8	Tennessee	(A)	79	87
Jan. 10	Georgia	(A)	95	71
Jan. 15	Kentucky (NR,2)	(H)	68	75
Jan. 17	Vanderbilt	(H)	74	69
Jan. 22	Florida	(H)	73	77
Jan. 29	LSU	(A)	73	77
Jan. 31	Ole Miss	(A)	72	65
Feb. 5	Tennessee (NR,11)	(H)	83	93
Feb. 7	Georgia	(H)	83	74
Feb. 12	Kentucky (NR,3)	(A)	82	89
Feb. 14	Vanderbilt (ot)	(A)	76	71
Feb. 19	Florida	(A)	68	79
Feb. 21	Jacksonville	(A)	80	66
Feb. 26	LSU	(H)	76	86
Feb. 28	Ole Miss	(H)	97	84
Mar. 5	Alabama (NR,12)	(A)	77	81
Mar. 7	Mississippi State	(A)	75	89

 (N1) Birmingham, Ala.
 (N2) Louisville Holiday Classic, Louisville, Ky.

1977-78 Won 13, Lost 14 (8-10 SEC)

 COACH: Bob Davis
 CAPTAINS: Mike Mitchell, Stan Pietkiewicz,
 Myles Patrick

			AU	Opp.
Dec. 1	Houston	(H)	87	88
Dec. 3	South Florida	(H)	71	54
Dec. 9	Southern Illinois	(N1)	66	65
Dec. 10	Oklahoma State	(N1)	112	94
Dec. 17	Iona College	(A)	82	105

Dec. 29	Southern Cal	(N2)	74	85
Dec. 30	Temple	(N2)	73	74
Jan. 2	Georgia	(A)	76	69
Jan. 4	Tennessee	(A)	76	80
Jan. 7	Vanderbilt	(H)	74	61
Jan. 9	Kentucky (NR,1)	(H)	77	101
Jan. 14	Florida	(A)	81	72
Jan. 21	Ole Miss	(A)	75	84
Jan. 23	LSU	(A)	79	90
Jan. 28	Alabama	(H)	74	81
Jan. 30	Mississippi State	(H)	85	74
Feb. 1	Georgia Tech	(A)	77	72
Feb. 4	Vanderbilt	(A)	78	91
Feb. 6	Kentucky (NR,1)	(A)	81	104
Feb. 11	Florida	(H)	92	84
Feb. 13	Oral Roberts	(H)	82	78
Feb. 18	Ole Miss	(H)	92	67
Feb. 20	LSU (ot)	(H)	95	101
Feb. 25	Alabama	(A)	86	89
Feb. 27	Mississippi State (ot)	(A)	82	83
Mar. 4	Georgia	(H)	81	80
Mar. 6	Tennessee	(H)	107	94

 (N1) Marshall Tournament, Huntington, W. Va.
 (N2) Sugar Bowl Tournament, New Orleans, La.

SONNY SMITH

 1979-89
 11 Year Career
 Record: 173-154
 (84-114 SEC)

1978-79 Won 13, Lost 16 (5-13 SEC)

 COACH: Sonny Smith
 CAPTAINS: Bubba Price, Rich Valavicius

			AU	Opp.
Dec. 1	Southwestern Louisiana	(N1)	83	82
Dec. 4	Florida State	(H)	70	71
Dec. 9	Iona	(H)	74	66
Dec. 12	Richmond	(A)	84	72
Dec. 15	Oklahoma	(N1)	78	70
Dec. 16	Navy	(N1)	63	57
Dec. 21	Georgia Tech	(N2)	60	57
Jan. 3	Vanderbilt	(H)	55	57
Jan. 6	Florida	(H)	91	86
Jan. 8	Oral Roberts	(A)	62	63
Jan. 11	Georgia	(A)	84	77
Jan. 13	Ole Miss	(A)	62	77
Jan. 15	LSU (NR,13)	(A)	82	94
Jan. 20	Alabama (NR,18)	(H)	76	83
Jan. 22	Mississippi State	(H)	72	74
Jan. 25	Kentucky (ot)	(H)	83	86
Jan. 27	Vanderbilt (NR,19)	(A)	59	66
Jan. 29	Kentucky	(A)	59	66
Feb. 3	Florida (ot)	(A)	93	92
Feb. 7	Tennessee	(A)	62	73
Feb. 10	Ole Miss (2ot)	(H)	56	54
Feb. 12	LSU (NR,8)	(H)	68	78
Feb. 17	Alabama (NR,20)	(A)	73	80
Feb. 19	Mississippi State	(A)	66	73
Feb. 22	Georgia	(H)	73	68
Feb. 24	Tennessee	(H)	55	60
Feb. 28	Vanderbilt	(N3)	59	53
Mar. 1	Georgia (4ot)	(N3)	95	91
Mar. 2	Tennessee (NR,20)	(N3)	64	75

 (N1) Big Sun Tournament, St. Petersburg, Fla.
 (N2) Birmingham, Ala.
 (N3) SEC Tournament, Birmingham, Ala.

1979-80 Won 10, Lost 18 (5-13 SEC)

 COACH: Sonny Smith
 CAPTAIN: Rich Valavicius

			AU	Opp.
Dec. 3	Texas Wesleyan	(H)	90	51
Dec. 5	Ole Miss	(H)	76	73
Dec. 7	Arkansas State (ot)	(N1)	62	69
Dec. 8	George Washington	(N1)	60	71
Dec. 12	Tennessee	(A)	58	61
Dec. 15	South Florida	(A)	74	56
Dec. 18	Austin Peay	(N2)	65	61



Dec. 21	Long Beach State	(N3)	74	69
Dec. 22	Southwestern Louisiana	(N3)	75	92
Jan. 2	Kentucky (NR,2)	(A)	65	67
Jan. 5	Florida	(H)	82	62
Jan. 9	Vanderbilt	(A)	57	66
Jan. 12	Mississippi State	(H)	77	67
Jan. 16	LSU (NR,14)	(A)	82	93
Jan. 19	Georgia	(H)	58	53
Jan. 23	Alabama (ot)	(H)	46	50
Jan. 26	Ole Miss	(A)	54	71
Jan. 30	Kentucky (NR,3)	(H)	62	64
Feb. 2	Florida	(A)	60	70
Feb. 4	Florida State	(A)	69	73
Feb. 6	Vanderbilt	(H)	73	77
Feb. 9	Mississippi State	(A)	72	76
Feb. 13	LSU (NR,5)	(H)	44	50
Feb. 16	Georgia (ot)	(A)	69	65
Feb. 20	Alabama	(A)	47	59
Feb. 23	Tennessee	(H)	63	72
Feb. 27	Georgia	(N)	79	71
Feb. 28	Kentucky (NR,2)	(N)	61	69

(N1) Show-Me Classic, Columbia, Mo.
 (N2) Birmingham, Ala.
 (N3) Bayou Classic, Lafayette, La.
 (N4) SEC Tournament, Birmingham, Ala.

1980-81 Won 11, Lost 16 (4-14 SEC)
 COACH: Sonny Smith
 CO-CAPTAINS: Darrell Lockhart, Earl Banks

			AU	Opp.
Dec. 1	Towson State	(H)	87	63
Dec. 3	Tennessee	(H)	75	65
Dec. 6	Armstrong State	(H)	79	70
Dec. 8	Tennessee Tech	(H)	77	62
Dec. 13	Eckerd College	(H)	106	66
Dec. 17	Florida State*	(N)	78	74
Dec. 20	Austin Peay	(A)	52	51
Dec. 29	Air Force (ot)	(N1)	46	48
Dec. 30	Columbia	(N1)	63	55
Jan. 3	Ole Miss	(A)	45	46
Jan. 7	Kentucky (NR,4)	(H)	66	79
Jan. 10	Florida	(A)	59	63
Jan. 14	Vanderbilt	(H)	81	97
Jan. 17	Mississippi State	(A)	61	69
Jan. 21	LSU (NR,5)	(H)	64	74
Jan. 24	Georgia	(A)	63	67
Jan. 28	Alabama	(A)	73	83
Jan. 31	Ole Miss	(H)	58	61
Feb. 4	Kentucky (NR,6)	(A)	74	102
Feb. 7	Florida	(H)	50	55
Feb. 11	Vanderbilt	(A)	69	55
Feb. 14	Mississippi State	(H)	66	55
Feb. 18	LSU (NR,4)	(A)	47	58
Feb. 21	Georgia	(H)	65	76
Feb. 25	Alabama	(H)	56	54
Feb. 28	Tennessee (NR,10)	(A)	63	75
Mar. 4	Florida OT*	(N2)	48	50

(N1) Blade Glass Classic, Toledo, Ohio
 (N2) SEC Tournament, Birmingham, Ala.

1981-82 Won 14, Lost 14 (7-11 SEC)
 COACH: Sonny Smith
 CO-CAPTAINS: Darrell Lockhart, Alvin Mumphord

			AU	Opp.
Nov. 30	Mississippi College	(H)	88	54
Dec. 2	Stetson	(H)	60	59
Dec. 5	Austin Peay	(H)	67	56
Dec. 7	Tennessee Tech	(A)	88	61
Dec. 12	Tennessee	(A)	79	86
Dec. 19	Florida State	(A)	77	76
Dec. 21	Cal State-Chico	(H)	104	61
Dec. 29	William & Mary	(N1)	48	58
Dec. 30	Duke	(N1)	71	72
Jan. 2	Ole Miss	(H)	75	71
Jan. 6	Kentucky (NR,3)	(A)	71	83
Jan. 9	Florida	(H)	80	60
Jan. 13	Vanderbilt	(A)	68	78
Jan. 16	Mississippi State	(H)	62	49
Jan. 20	LSU	(A)	68	69
Jan. 23	Georgia	(H)	82	74
Jan. 27	Alabama (NR,13)	(H)	65	67
Jan. 30	Ole Miss	(A)	57	64
Feb. 3	Kentucky (NR,9) (ot)	(H)	83	81
Feb. 6	Florida	(A)	66	69

Feb. 10	Vanderbilt	(H)	60	71
Feb. 13	Mississippi State	(A)	45	59
Feb. 17	LSU	(H)	82	72
Feb. 20	Georgia	(A)	56	57
Feb. 24	Alabama (NR,17)	(A)	72	74
Feb. 27	Tennessee (NR,19)	(H)	56	54
Mar. 3	Mississippi State OT	(N2)	38	36
Mar. 4	Kentucky (NR,15)	(N2)	66	89

(N1) Iron Duke Classic, Durham, N.C.

(N2) SEC Tournament, Lexington, Ky.

1982-83 Won 15, Lost 13 (8-10 SEC)
 COACH: Sonny Smith
 CO-CAPTAINS: Darrell Lockhart, Alvin Mumphord

			AU	Opp.
Nov. 26	UAB	(A)	63	61
Nov. 29	Mercer	(H)	85	76
Dec. 1	Florida State	(H)	78	68
Dec. 4	Tennessee Tech	(H)	74	65
Dec. 6	Stetson	(A)	58	59
Dec. 8	Houston (NR,9)	(A)	65	77
Dec. 18	Florida International	(H)	115	77
Dec. 28	Cal State Fullerton	(N1)	69	60
Dec. 29	Utah	(A1)	71	62
Jan. 3	Mississippi State	(H)	77	66
Jan. 5	Alabama (NR,5)	(H)	91	80
Jan. 8	Florida	(A)	75	92
Jan. 15	Kentucky (NR,6)	(A)	75	67
Jan. 17	Vanderbilt	(A)	62	64
Jan. 22	Georgia (20,NR)	(H)	66	64
Jan. 24	Tennessee	(H)	77	80
Jan. 29	LSU	(A)	64	62
Jan. 31	Ole Miss	(A)	48	61
Feb. 5	Florida	(H)	62	54
Feb. 12	Kentucky (NR,13)	(H)	69	71
Feb. 14	Vanderbilt	(H)	72	71
Feb. 19	Georgia	(A)	60	67
Feb. 22	Tennessee	(A)	74	82
Feb. 26	LSU	(H)	61	87
Mar. 1	Ole Miss	(H)	82	59
Mar. 3	Mississippi State	(A)	53	69
Mar. 6	Alabama	(A)	78	86
Mar. 10	Alabama	(N2)	61	62

(A1,N1) Utah Hilton Classic, Salt Lake City, Utah
 (N2) SEC Tournament, Birmingham, Ala.

1983-84 Won 20, Lost 11 (12-6 SEC)
 COACH: Sonny Smith

			AU	Opp.
Nov. 28	Columbus College	(H)	58	54
Dec. 2	UAB (ot)	(A)	62	69
Dec. 5	Florida State	(A)	76	69
Dec. 8	Youngstown State	(N1)	78	52
Dec. 9	South Alabama	(A1)	73	95
Dec. 14	Mercer	(A)	65	63
Dec. 19	Eastern Kentucky	(H)	100	60
Dec. 22	Mississippi State	(A)	73	55
Dec. 27	Wake Forest (NR,10)	(N2)	67	76
Dec. 28	Villanova	(N2)	95	83
Jan. 5	Alabama	(A)	91	86
Jan. 7	Florida	(H)	82	66
Jan. 13	Kentucky (NR,2)	(H)	82	63
Jan. 17	Vanderbilt	(H)	71	73
Jan. 22	Georgia	(A)	86	90
Jan. 24	Tennessee	(A)	79	72
Jan. 27	LSU (NR,10)	(H)	80	78
Jan. 31	Ole Miss (19,NR)	(H)	60	50
Feb. 5	Florida (19,NR)	(A)	67	65
Feb. 11	Kentucky (16,6)	(A)	64	84
Feb. 13	Vanderbilt	(A)	73	67
Feb. 18	Georgia	(H)	81	63
Feb. 20	Tennessee	(H)	54	57
Feb. 25	LSU	(A)	80	81
Feb. 27	Ole Miss	(A)	71	72
Mar. 1	Mississippi State	(H)	68	53
Mar. 3	Alabama	(H)	83	70
Mar. 8	Vanderbilt	(N3)	59	58
Mar. 9	Tennessee	(N3)	60	58
Mar. 10	Kentucky (NR,3)	(N3)	49	51
Mar. 15	Richmond	(N4)	71	72

(A1,N1) Colonial Classic, Mobile, Ala.

(N2) Gator Bowl Tournament, Jacksonville, Fla.

(N3) SEC Tournament, Nashville, Tenn.

(N4) NCAA Tournament First Round, Charlotte, N.C.

1984 Final Wire Service Poll	
United Press International	
1. North Carolina	7. Arkansas
2. Georgetown	8. Oklahoma
3. Kentucky	9. UTEP
4. DePaul	10. Maryland
5. Houston	19. Auburn
6. Illinois	

1984-85 Won 22, Lost 12 (8-10 SEC)
 COACH: Sonny Smith

			AU	Opp.
Nov. 24	Stetson	(H)	92	50
Nov. 26	Columbus College	(H)	91	56
Nov. 30	UAB (NR,13)	(A)	61	59
Dec. 3	Armstrong State	(H)	80	47
Dec. 8	Mercer	(H)	70	69
Dec. 12	Radford	(H)	79	57
Dec. 21	VCU	(N1)	59	78
Dec. 22	Delaware	(N1)	95	63
Dec. 29	West Virginia	(A)	59	58
Jan. 2	Kentucky	(A)	61	68
Jan. 5	Florida	(H)	80	74
Jan. 9	Tennessee	(A)	74	86
Jan. 12	Mississippi State	(H)	62	53
Jan. 16	Alabama	(H)	55	60
Jan. 19	Georgia	(A)	80	97
Jan. 24	Ole Miss	(H)	93	73
Jan. 26	LSU	(A)	62	80
Jan. 30	Vanderbilt	(A)	86	80
Feb. 2	Kentucky (ot)	(H)	47	49
Feb. 6	Florida (ot)	(A)	81	78
Feb. 9	Tennessee	(H)	75	60
Feb. 13	Mississippi State	(A)	65	82
Feb. 16	Alabama (2ot)	(A)	72	74
Feb. 21	Georgia	(H)	84	86
Feb. 23	Ole Miss	(A)	69	57
Feb. 27	LSU	(H)	73	78
Mar. 2	Vanderbilt	(H)	84	58
Mar. 6	Ole Miss	(N2)	68	60
Mar. 7	LSU	(N2)	58	55
Mar. 8	Florida	(N2)	43	42
Mar. 9	Alabama (ot)	(N2)	53	49
Mar. 14	Purdue	(N3)	59	58
Mar. 16	Kansas (NR,13)	(N3)	66	64
Mar. 22	North Carolina (NR,7)	(N4)	56	62

(N1) Krystal Classic, Chattanooga, Tenn.

(N2) SEC Tournament, Birmingham, Ala.

(N3) NCAA Tourney 1st/2nd Rounds, Notre Dame, Ind.

(N4) NCAA Tournament Sweet 16, Birmingham, Ala.

1985 Final Rankings	
USA Today	The Sporting News
1. Villanova	1. North Carolina
2. Georgetown	2. Georgetown
3. St. John's	3. Kentucky
4. Georgia Tech	4. Houston
5. Memphis State	5. Maryland
6. Oklahoma	6. DePaul
7. North Carolina	7. Illinois
8. Louisiana Tech	8. Fresno State
9. Michigan	9. UTEP

1985-86 Won 22, Lost 11 (13-5 SEC)
 COACH: Sonny Smith

			AU	Opp.
Nov. 22	West Virginia (10,NR)	(N1)	58	75
Nov. 26	Birmingham Southern	(H)	61	51
Dec. 3	West Virginia	(H)	84	59
Dec. 6	Kentucky Wesleyan	(N2)	80	71
Dec. 7	Western Kentucky	(A2)	58	71
Dec. 10	UAB (NR,16)	(A)	56	62
Dec. 14	Stetson	(N3)	77	54
Dec. 17	Southwestern Louisiana (ot)	(A)	64	66
Dec. 22	Central Florida	(N4)	78	49
Dec. 23	Boston College	(N4)	89	85
Jan. 4	Florida	(A)	59	62
Jan. 6	Kentucky (NR,12)	(H)	60	56
Jan. 8	Tennessee	(H)	59	45
Jan. 11	Mississippi State	(A)	72	56

Jan. 16	Alabama	(A)	56	60
Jan. 18	Georgia	(H)	84	69
Jan. 22	Ole Miss	(A)	73	61
Jan. 29	Vanderbilt	(H)	97	70
Jan. 31	Kentucky (NR,8)	(A)	71	81
Feb. 4	LSU	(H)	61	63
Feb. 6	Florida	(H)	67	65
Feb. 8	Tennessee	(A)	79	80
Feb. 12	Mississippi State	(H)	69	64
Feb. 15	Alabama (NR,18)	(H)	71	69
Feb. 19	Georgia (ot)	(A)	87	86
Feb. 22	Ole Miss	(H)	75	73
Feb. 26	LSU	(A)	92	86
Mar. 1	Vanderbilt	(A)	79	65
Mar. 6	Mississippi State	(N5)	63	65
Mar. 14	Arizona	(N6)	73	63
Mar. 16	St. John's (NR,4)	(N6)	81	65
Mar. 20	UNLV (NR,11)	(N7)	70	63
Mar. 22	Louisville (NR,7)	(N7)	76	84

(N1) Big Apple NIT, Hartford, Conn.
 (N2,A2) Wendy's Classic, Bowling Green, Ky.
 (N3) Daytona Beach, Fla.
 (N4) Red Lobster Classic, Orlando, Fla.
 (N5) SEC Tournament, Lexington, Ky.
 (N6) NCAA Tourney 1st/2nd Rounds, Long Beach, CA
 (N7) NCAA Tourney Sweet 16/Elite 8, Houston, Texas

1986 Final Rankings	
Basketball Weekly	USA Today
1. Louisville	1. Louisville
2. Duke	2. Duke
3. Kansas	3. Kansas
4. LSU	4. Kentucky
5. Kentucky	5. LSU
6. North Carolina	6. Georgia Tech
7. Georgia Tech	7. North Carolina
8. Navy	8. Navy
9. Auburn	9. Auburn
10. St. John's	10. St. John's

1986-87 Won 18, Lost 13 (9-9 SEC)
 COACH: Sonny Smith

		AU	Opp.
Nov. 28	UAB (12,NR)	(A) 68	58
Dec. 1	Armstrong State (12,NR)	(H) 94	54
Dec. 11	Austin Peay (7,NR)	(H) 115	93
Dec. 13	Southwestern La. (7,NR)	(H) 107	91
Dec. 15	Eastern Kentucky (7,NR)	(A) 97	82
Dec. 18	Augusta College (6,NR)	(H) 89	66
Dec. 28	Iowa State (5,NR)	(N1) 89	87
Dec. 29	UTEP (5,NR)	(N1) 82	87
Jan. 3	Kentucky (5,11)	(H) 60	63
Jan. 7	Georgia (ot) (13,NR)	(H) 62	58
Jan. 10	Mississippi State (13,NR)	(A) 66	52
Jan. 14	Tennessee (10,NR)	(H) 66	56
Jan. 17	Vanderbilt (10,NR)	(A) 75	91
Jan. 22	Alabama (17,13)	(A) 82	88
Jan. 24	Ole Miss (17,NR)	(H) 85	61
Jan. 28	LSU (18,NR)	(A) 73	75
Jan. 31	Florida (18,19)	(H) 81	68
Feb. 1	UNLV (18,3)	(H) 85	104
Feb. 4	Kentucky (20,NR)	(A) 71	75
Feb. 7	Georgia (20,NR)	(A) 71	75
Feb. 9	Florida	(A) 84	70
Feb. 12	Mississippi State	(H) 59	45
Feb. 14	Tennessee	(A) 84	103
Feb. 21	Alabama (NR,12)	(H) 75	77
Feb. 23	Vanderbilt	(H) 91	83
Feb. 25	Ole Miss	(A) 67	73
Mar. 1	LSU	(H) 100	62
Mar. 6	Kentucky	(N2) 79	72
Mar. 7	Alabama (NR,9)	(N2) 68	87
Mar. 12	San Diego	(N3) 62	61
Mar. 14	Indiana (NR,3)	(N3) 90	107

(N1) Sun Bowl Classic, El Paso, Texas
 (N2) SEC Tournament, Atlanta, Ga.
 (N3) NCAA Tournament, Indianapolis, Ind.

1987-88 Won 19, Lost 11 (11-7 SEC)
 COACH: Sonny Smith

		AU	Opp.
Nov. 27	South Alabama	(N1) 120	67
Dec. 5	VCU	(H) 93	80
Dec. 7	UT-Martin	(H) 99	77

Dec. 11	San Jose State	(N2) 70	65
Dec. 12	Illinois (ot)	(N2) 103	107
Dec. 14	Grambling	(H) 98	59
Dec. 16	Mercer	(H) 80	48
Dec. 29	Villanova	(N3) 65	64
Dec. 30	Georgia Tech	(N3) 72	83
Jan. 6	Florida	(H) 72	67
Jan. 9	Kentucky (NR,1)	(A) 53	52
Jan. 13	Georgia (19,NR)	(A) 68	87
Jan. 16	Mississippi State (19,NR)	(H) 65	57
Jan. 20	Tennessee	(A) 64	75
Jan. 23	Vanderbilt	(H) 71	75
Jan. 27	Alabama	(H) 84	74
Jan. 30	Ole Miss	(A) 66	69
Feb. 3	LSU	(H) 69	78
Feb. 6	Florida (NR,10)	(A) 58	57
Feb. 10	Kentucky	(H) 62	69
Feb. 13	Georgia	(H) 64	57
Feb. 17	Mississippi State	(A) 77	61
Feb. 20	Tennessee	(H) 73	68
Feb. 24	Vanderbilt (NR,17)	(A) 81	68
Feb. 27	Alabama	(A) 77	82
Mar. 2	Ole Miss	(H) 92	76
Mar. 5	LSU	(A) 89	80
Mar. 11	Georgia	(N4) 60	65
Mar. 17	Bradley (NR,11)	(N5) 90	86
Mar. 19	Oklahoma (NR,8)	(N5) 87	107

(N1) Birmingham, Ala.
 (N2) Illini Classic, Champaign, Ill.
 (N3) Cotton States Classic, Atlanta, Ga.
 (N4) SEC Tournament, Baton Rouge, La.
 (N5) NCAA Tournament, Atlanta, Ga.

1988-89 Won 9, Lost 19 (2-16 SEC)
 COACH: Sonny Smith

		AU	Opp.
Nov. 26	Mount St. Mary's	(H) 89	83
Nov. 29	Georgia State	(H) 74	70
Dec. 3	Mercer	(H) 87	66
Dec. 10	Texas Southern	(H) 109	81
Dec. 14	Vanderbilt	(A) 77	93
Dec. 17	Jackson State	(H) 74	51
Dec. 20	VCU	(A) 85	79
Dec. 28	Villanova	(N1) 83	84
Dec. 29	Central Florida	(N1) 95	68
Jan. 4	Tennessee (NR,19)	(H) 73	84
Jan. 7	LSU	(A) 77	104
Jan. 11	Mississippi State	(A) 56	69
Jan. 14	Florida	(H) 75	79
Jan. 18	Ole Miss	(H) 64	65
Jan. 25	Kentucky	(A) 76	86
Jan. 28	Alabama	(H) 64	67
Feb. 2	Georgia	(H) 62	75
Feb. 4	Tennessee	(A) 72	89
Feb. 8	LSU (NR,19)	(H) 91	104
Feb. 11	Mississippi State	(H) 70	68
Feb. 15	Florida	(A) 79	90
Feb. 18	Ole Miss	(A) 77	80
Feb. 20	Kentucky	(H) 77	75
Feb. 22	Vanderbilt	(H) 62	77
Feb. 25	UAB	(A) 76	105
Mar. 2	Alabama	(A) 58	74
Mar. 4	Georgia	(A) 76	80
Mar. 9	Ole Miss	(N2) 68	80

(N1) Red Lobster Classic, Orlando, Fla.
 (N2) SEC Tournament, Knoxville, Tenn.

TOMMY JOE EAGLES
 1989-94
 5 Year Career
 Record: 64-78
 (29-55 SEC)

1989-90 Won 13, Lost 18 (8-10 SEC)
 COACH: Tommy Joe Eagles
 CAPTAINS: Derrick Dennison, Zane Arnold

		AU	Opp.
Nov. 24	Michigan State	(N1) 79	92
Nov. 25	Connecticut	(N1) 81	95

Nov. 26	Alaska-Anchorage	(A1) 94	109
Dec. 1	UAB	(H) 65	75
Dec. 3	Florida State	(A) 78	82
Dec. 9	Duquesne	(N2) 79	74
Dec. 11	Alabama State	(H) 98	79
Dec. 21	Tennessee Tech	(N3) 70	72
Dec. 28	Navy	(N4) 75	61
Dec. 29	Southern Mississippi	(N4) 73	84
Jan. 3	Tennessee	(A) 70	72
Jan. 6	LSU (NR,17)	(H) 70	77
Jan. 10	Mississippi State	(H) 93	71
Jan. 13	Florida	(A) 62	84
Jan. 17	Ole Miss	(A) 72	80
Jan. 20	Vanderbilt	(H) 82	79
Jan. 24	Kentucky	(H) 74	70
Jan. 27	Alabama (NR,24)	(A) 59	78
Jan. 31	Georgia	(A) 75	88
Feb. 3	Tennessee	(H) 89	83
Feb. 5	Georgia State	(A) 79	66
Feb. 7	LSU (NR,11)	(A) 71	82
Feb. 10	Mississippi State	(A) 77	74
Feb. 14	Florida	(H) 75	55
Feb. 17	Ole Miss	(H) 95	84
Feb. 20	Vanderbilt	(A) 87	74
Feb. 24	Kentucky	(A) 95	98
Feb. 28	Alabama	(H) 65	80
Mar. 3	Georgia	(H) 79	94
Mar. 9	LSU (NR,16)	(N5) 78	76
Mar. 10	Alabama	(N5) 71	87

(N1,A1) Great Alaska Shootout, Anchorage, Alaska
 (N2) Birmingham, Ala.
 (N3) Huntsville, Ala.
 (N4) Blue Angels Classic, Pensacola, Fla.
 (N5) SEC Tournament, Orlando, Fla.

1990-91 Won 13, Lost 16 (5-13 SEC)
 COACH: Tommy Joe Eagles
 CAPTAINS: John Caylor, Zane Arnold

		AU	Opp.
Nov. 24	Texas Southern	(H) 85	77
Nov. 26	Georgia State	(H) 83	65
Nov. 30	UAB	(A) 65	71
Dec. 8	Ohio	(H) 75	65
Dec. 13	Duquesne	(A) 75	71
Dec. 15	Florida State	(H) 99	96
Dec. 17	Texas A&M	(H) 95	71
Dec. 27	Villanova	(N1) 71	88
Dec. 28	Tulane	(N1) 84	71
Jan. 3	Alabama	(H) 56	68
Jan. 5	Florida	(A) 82	84
Jan. 9	Ole Miss	(A) 62	60
Jan. 12	LSU	(H) 84	96
Jan. 16	Vanderbilt	(H) 59	80
Jan. 19	Tennessee	(A) 67	63
Jan. 23	Georgia (2ot)	(A) 59	58
Jan. 26	Mississippi State	(H) 64	84
Jan. 29	Kentucky (NR,10)	(H) 81	89
Feb. 2	Alabama	(A) 80	88
Feb. 6	Florida (ot)	(H) 84	87
Feb. 9	Ole Miss	(H) 72	69
Feb. 13	LSU (NR,20)	(A) 61	98
Feb. 16	Vanderbilt	(A) 70	90
Feb. 19	Tennessee	(H) 74	65
Feb. 23	Georgia	(H) 77	86
Feb. 27	Mississippi State	(A) 76	94
Mar. 2	Kentucky (NR,13)	(A) 93	114
Mar. 8	LSU (NR,16)	(N2) 92	77
Mar. 9	Alabama (NR,24)	(N2) 59	77

(N1) USF&G Sugar Bowl Tournament, New Orleans, La.
 (N2) SEC Tournament, Nashville, Tenn.

1991-92 Won 12, Lost 15 (5-11 SEC)
 COACH: Tommy Joe Eagles
 CAPTAINS: Chris Brandt, Champ Wrencher

		AU	Opp.
Nov. 25	SIU-Edwardsville	(H) 109	86
Nov. 29	UAB	(N1) 74	88
Dec. 4	Texas A&M	(A) 86	83
Dec. 11	Troy State	(H) 141	116
Dec. 14	Southern Miss	(H) 93	78
Dec. 17	UNLV	(A) 82	85
Dec. 20	Slippery Rock	(N2) 93	66
Dec. 21	South Alabama	(N2) 87	107
Dec. 28	Eastern Kentucky	(N3) 104	92



Dec. 29	UT-Chattanooga	(N3)	75	87
Jan. 4	Arkansas (NR,16)	(A)	92	110
Jan. 8	LSU	(H)	70	87
Jan. 13	Ole Miss	(A)	96	83
Jan. 18	Alabama (NR,9)	(H)	81	63
Jan. 22	South Carolina	(H)	85	68
Jan. 25	Tennessee	(A)	74	82
Jan. 29	Mississippi State	(H)	72	75
Feb. 1	Georgia	(H)	89	84
Feb. 4	Vanderbilt	(A)	83	89
Feb. 8	Kentucky (NR,19)	(H)	67	85
Feb. 12	James Madison	(H)	87	71
Feb. 19	Florida	(A)	81	92
Feb. 22	LSU	(A)	82	99
Feb. 26	Arkansas (NR,9)	(H)	74	82
Feb. 29	Ole Miss	(H)	110	84
Mar. 4	Mississippi State	(A)	70	77
Mar. 7	Alabama (NR,20)	(A)	80	82

(N1) Birmingham-Jefferson Civic Center
(N2) Blue Angels Classic, Pensacola, Fla.
(N3) Dr. Pepper Classic, Chattanooga, Tenn.

1992-93 Won 15, Lost 12 (8-8 SEC)

COACH: Tommy Joe Eagles
CAPTAIN: Reggie Gallon

		AU	Opp.
Dec. 1	Louisiana College	(H) 98	60
Dec. 5	James Madison	(A) 80	89
Dec. 15	Lincoln Memorial	(H) 77	51
Dec. 18	Louisiana Tech	(N1) 65	45
Dec. 19	UNC-Wilmington	(A1) 80	91
Dec. 21	Centenary	(H) 86	61
Dec. 28	Old Dominion	(H) 96	85
Jan. 3	Mississippi State	(A) 71	77
Jan. 6	Florida	(H) 73	76
Jan. 9	LSU	(A) 81	87
Jan. 16	South Carolina	(A) 83	81
Jan. 20	Tennessee	(H) 88	75
Jan. 23	Arkansas (NR,8)	(A) 100	89
Jan. 27	Alabama	(A) 78	81
Jan. 30	Vanderbilt (NR,15)	(H) 70	73
Feb. 3	Ole Miss	(A) 85	74
Feb. 6	Georgia	(A) 69	96
Feb. 9	UAB	(A) 86	74
Feb. 13	LSU	(H) 73	75
Feb. 17	Mississippi State	(H) 83	77
Feb. 22	Southern Miss	(A) 81	75
Feb. 24	Ole Miss	(H) 83	73
Feb. 27	Kentucky (NR,2)	(A) 78	80
Mar. 3	Alabama	(H) 78	70
Mar. 6	Arkansas (NR,13)	(H) 81	80
Mar. 11	Tennessee	(N2) 76	78
Mar. 18	Clemson (NIT)	(A) 72	84

(N1,A1) USAir East Coast Classic, Wilmington, N.C.
(N2) SEC Tournament, Lexington, Ky.

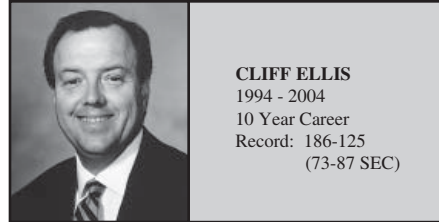
1993-94 Won 11, Lost 17 (3-13 SEC)

COACH: Tommy Joe Eagles
CAPTAINS: Wesley Person, Aaron Swinson

		AU	Opp.
Nov. 28	UNC-Wilmington	(H) 94	75
Nov. 30	Nicholls State	(H) 76	79
Dec. 7	Ball State	(H) 92	87
Dec. 9	Troy State	(H) 113	86
Dec. 16	UAB	(H) 65	69
Dec. 18	Old Dominion	(A) 101	87
Dec. 28	Michigan (NR,7)	(N1) 81	102
Dec. 30	Fordham	(N1) 81	60
Jan. 5	Georgia (ot)	(H) 80	83
Jan. 8	LSU	(A) 72	83
Jan. 12	Mississippi State (ot)	(H) 86	91
Jan. 15	Arkansas (NR,3)	(H) 105	117
Jan. 19	Ole Miss (2ot)	(A) 85	88
Jan. 22	Tennessee	(A) 85	92
Jan. 25	Alabama	(H) 69	74
Jan. 30	Kentucky (NR,7)	(H) 74	91
Feb. 2	Florida (NR,24)	(A) 67	68
Feb. 5	Florida Atlantic	(H) 91	78
Feb. 9	Vanderbilt	(A) 60	84
Feb. 12	LSU	(H) 111	83
Feb. 16	South Carolina	(H) 88	70
Feb. 19	Mississippi State	(A) 76	65
Feb. 22	Southern Miss	(H) 89	73
Feb. 26	Arkansas (NR,1)	(A) 81	91

Mar. 2	Ole Miss	(H)	62	68
Mar. 5	Alabama	(A)	68	83
Mar. 10	Vanderbilt	(N2) 81	56	
Mar. 11	Alabama	(N2)	55	83

(N1) Bank One Fiesta Bowl Basketball Classic, Tucson, Ariz.
(N2) SEC Tournament, The Pyramid, Memphis, Tenn.



CLIFF ELLIS

1994 - 2004
10 Year Career
Record: 186-125
(73-87 SEC)

1994-95 Won 16, Lost 13 (7-9 SEC)

COACH: Cliff Ellis
CAPTAINS: Wes Flanigan, Moochie Norris
Lance Weems

		AU	Opp.
Nov. 26	Lynn	(H) 78	70
Nov. 30	UAB	(A) 60	54
Dec. 2	Georgia Southern	(N1) 77	45
Dec. 3	Ball State	(A1) 74	82
Dec. 12	West Florida	(H) 96	59
Dec. 14	Troy State	(H) 95	71
Dec. 17	Alabama State	(H) 102	62
Dec. 29	Florida A&M	(A2) 83	70
Dec. 30	Kansas State	(N2) 75	78
Jan. 4	Kentucky (NR,6)	(A) 64	98
Jan. 8	Ole Miss	(H) 88	74
Jan. 11	LSU	(H) 73	76
Jan. 14	Arkansas (NR,4)	(H) 104	90
Jan. 18	Tennessee	(H) 61	57
Jan. 21	Georgia	(A) 77	83
Jan. 25	Florida (NR,23)	(H) 77	71
Feb. 1	Alabama (NR,20)	(A) 63	65
Feb. 4	Ole Miss	(A) 75	77
Feb. 8	Vanderbilt	(H) 59	77
Feb. 11	Mississippi State (NR,21)	(A) 70	69
Feb. 15	South Carolina	(A) 80	78
Feb. 18	Alabama (NR,18)	(H) 73	86
Feb. 22	Southern Mississippi	(A) 81	79
Feb. 25	LSU	(A) 78	89
Mar. 1	Mississippi State (NR,14)	(H) 76	69
Mar. 4	Arkansas (NR,7)	(A) 66	68
Mar. 9	South Carolina	(N3) 81	66
Mar. 10	Kentucky (NR,3)	(N3) 81	93
Mar. 15	Marquette (NIT)	(H) 61	68

(N1,A1) Cardinal Varsity Club Classic, Muncie, Ind.
(N2,A2) Capital City Classic, Tallahassee, Fla.
(N3) SEC Tournament, Georgia Dome, Atlanta, Ga.

1995-96 Won 19, Lost 13 (6-10 SEC)

COACH: Cliff Ellis
CAPTAINS: Ray Donald, Wes Flanigan, Lance Weems

		AU	Opp.
Nov. 24	La Salle	(N1) 70	60
Nov. 25	James Madison	(N1) 82	71
Nov. 26	Louisville (NR,13)	(N1) 82	78
Nov. 30	Jacksonville State	(H) 91	74
Dec. 3	UAB	(H) 54	66
Dec. 8	Liberty	(N2) 63	58
Dec. 9	Baylor	(A2) 83	64
Dec. 12	South Alabama	(A) 59	50
Dec. 15	Northeast Louisiana	(H) 80	71
Dec. 17	Coastal Carolina	(H) 82	66
Dec. 19	Wofford	(H) 73	56
Dec. 29	Norfolk State	(N3) 92	56
Dec. 30	Florida A&M	(A3) 84	54
Jan. 3	Tennessee	(A) 62	66
Jan. 6	Arkansas	(H) 101	76
Jan. 10	Alabama	(A) 65	72
Jan. 13	Georgia (NR,17)	(H) 89	86
Jan. 21	LSU (23,NR)	(H) 95	87
Jan. 24	Ole Miss (21,NR)	(A) 69	82
Jan. 31	Vanderbilt (22,NR)	(A) 62	76
Feb. 4	Miss. State (22,NR) (ot)	(H) 75	78
Feb. 7	South Carolina (22,NR)	(H) 84	73
Feb. 10	Florida (22,NR)	(A) 73	70
Feb. 14	Alabama	(H) 72	75

Feb. 17	Arkansas	(A)	77	87
Feb. 21	Ole Miss	(H) 69	62	
Feb. 24	LSU	(A)	67	93
Feb. 27	Kentucky (NR,1)	(H)	73	88
Mar. 2	Mississippi State	(A)	51	67
Mar. 7	Vanderbilt	(N4) 68	65	
Mar. 8	Mississippi State (NR,25)	(N4)	58	69
Mar. 13	Tulane (NIT) (ot)	(H)	73	87

(N1) Puerto Rico Shootout, Bayamon, P.R.
(N2,A2) Dr. Pepper Invitational, Waco, Texas
(N3,A3) Capital City Classic, Tallahassee, Fla.
(N4) SEC Tournament, Superdome, New Orleans, La.

1996-97 Won 16, Lost 15 (6-10 SEC)

COACH: Cliff Ellis
CAPTAINS: Wes Flanigan, Pat Burke

		AU	Opp.	
Nov. 22	UAB	(A)	57	64
Nov. 25	Arkansas-Pine Bluff	(H) 89	56	
Nov. 29	Colorado (ot)	(N1)	72	78
Nov. 30	Hawaii-Hilo (ot)	(A) 98	92	
Dec. 1	TCU	(N1)	66	86
Dec. 5	Arkansas-Little Rock	(H) 75	63	
Dec. 7	Georgia State	(H) 66	48	
Dec. 14	Baylor	(H)	63	68
Dec. 15	Western Carolina	(H) 80	55	
Dec. 18	South Alabama	(H) 60	51	
Dec. 21	Murray State	(N2) 86	72	
Dec. 28	Florida A&M	(A) 95	57	
Dec. 30	Winthrop	(H) 80	55	
Jan. 4	South Carolina	(A)	56	66
Jan. 8	Arkansas	(H)	55	56
Jan. 11	Florida	(H) 79	65	
Jan. 15	Tennessee	(H) 43	35	
Jan. 18	Kentucky (NR,4)	(A)	53	77
Jan. 22	LSU	(A)	59	75
Jan. 25	Georgia	(A)	48	53
Jan. 28	Alabama	(H) 72	62	
Feb. 1	Ole Miss	(A)	46	57
Feb. 5	Mississippi State	(H) 81	68	
Feb. 8	LSU	(H) 76	72	
Feb. 11	Arkansas	(A)	42	75
Feb. 15	Vanderbilt	(H)	61	75
Feb. 22	Alabama	(A)	50	55
Feb. 26	Mississippi State	(A) 68	64	
Mar. 1	Ole Miss	(H)	63	71
Mar. 6	Tennessee	(N3) 67	54	
Mar. 7	Kentucky (NR,6)	(N3)	50	92

(N1) Big Island Invitational, Hilo, Hawaii
(N2) Mulligan Holiday Hoopfest, Birmingham, Ala.
(N3) SEC Tournament, The Pyramid, Memphis, Tenn.

1997-98 Won 16, Lost 14 (7-9 SEC)

COACH: Cliff Ellis
CAPTAINS: Franklin Williams, Doc Robinson

		AU	Opp.	
Nov. 11	Temple (NR,24)	(N1)	42	68
Nov. 14	Central Florida	(A) 70	63	
Nov. 17	Nicholls State	(H) 96	75	
Nov. 21	Southern Miss	(H) 83	70	
Nov. 25	Wofford	(H) 68	51	
Dec. 6	Florida A&M	(H) 79	69	
Dec. 12	Pepperdine	(N2)	55	62
Dec. 13	Weber State	(N2) 63	58	
Dec. 16	Jacksonville State	(H) 89	61	
Dec. 20	UAB	(N3)	65	71
Dec. 30	Navy	(H) 70	54	
Jan. 3	Georgia	(H) 73	62	
Jan. 7	Tennessee	(A) 74	69	
Jan. 14	LSU	(A)	54	59
Jan. 18	Alabama	(H) 94	40	
Jan. 21	Arkansas (NR,18)	(H)	65	79
Jan. 24	South Carolina (NR,14)	(H)	56	61
Jan. 28	Mississippi State	(A) 69	66	
Jan. 31	Ole Miss (NR,12)	(H) 68	67	
Feb. 4	Alabama	(A)	62	76
Feb. 7	Mississippi State (ot)	(H) 68	66	
Feb. 11	Florida	(A)	64	81
Feb. 14	LSU	(H) 66	44	
Feb. 18	Vanderbilt	(A)	66	82
Feb. 21	Arkansas	(A)	83	107
Feb. 25	Kentucky (NR,7)	(H)	58	83
Feb. 28	Ole Miss (NR,13)	(A)	67	74
Mar. 5	Florida	(N4)	64	68



Mar. 11 Southern Miss (NIT) (H) 77 62
 Mar. 16 Marquette (NIT) (ot) (A) 60 75
 (N1) NABC Classic, Albuquerque, N.M.
 (N2) Cougar Classic, Provo, Utah
 (N3) Holiday Hardwood Classic, BJCC, Birmingham, Ala.
 (N4) SEC Tournament, Georgia Dome, Atlanta, Ga.

1998-99 Won 29, Lost 4 (14-2 SEC -- SEC Champions)
 COACH: Cliff Ellis
 CAPTAINS: Bryant Smith, Doc Robinson

	AU	Opp.
Nov. 13 Southeastern Louisiana (H) 114 60		
Nov. 16 Florida A&M (H) 94 47		
Nov. 19 Central Florida (H) 77 42		
Nov. 23 BYU (H) 62 43		
Nov. 27 Rutgers (N1) 70 55		
Nov. 29 Hawaii (A1) 84 57		
Dec. 3 UNC-Asheville (H) 91 60		
Dec. 6 Florida State (A) 80 68		
Dec. 12 UAB (24,NR) (A2) 77 64		
Dec. 15 Wofford (18,NR) (H) 79 51		
Dec. 19 Navy (18,NR) (A) 88 70		
Dec. 29 Bethune-Cookman (15,NR)(H) 99 46		
Jan. 2 Tennessee (15,NR) (H) 90 62		
Jan. 6 Arkansas (14,18) (H) 83 66		
Jan. 9 LSU (14,NR) (A) 73 70		
Jan. 13 Ole Miss (8,NR) (A) 74 59		
Jan. 16 Florida (8,NR) (H) 88 69		
Jan. 20 Kentucky (6,7) (A) 62 72		
Jan. 23 Alabama (6,NR) (A) 73 58		
Jan. 27 Mississippi State (7,NR) (H) 64 54		
Jan. 30 Georgia (7,NR) (A) 85 74		
Feb. 3 South Carolina (6,NR) (A) 76 48		
Feb. 6 LSU (6,NR) (H) 80 54		
Feb. 9 Ole Miss (3,NR) (H) 95 66		
Feb. 13 Alabama (3,NR) (H) 102 61		
Feb. 17 Vanderbilt (3,NR) (H) 81 63		
Feb. 24 Arkansas (2,NR) (A) 88 104		
Feb. 27 Mississippi State (2,NR) (A) 76 73		
Mar. 5 Alabama (4,NR) (N3) 93 61		
Mar. 6 Kentucky (4,14) (N3) 57 69		
Mar. 11 Winthrop (4,NR) (N4) 80 41		
Mar. 13 Oklahoma State (4,NR) (N4) 81 74		
Mar. 18 Ohio State (4,14) (N5) 64 72		
(N1) United Airlines Tip-off Classic, Honolulu, Hawaii		
(A2) Arby's Hardwood Classic, BJCC, Birmingham, Ala.		
(N3) SEC Tournament, Georgia Dome, Atlanta, Ga.		
(N4) NCAA Tourney 1st/2nd Rounds, Indianapolis, Ind.		
(N5) NCAA Tournament Sweet 16, Knoxville, Tenn.		

1999 Final Rankings

Associated Press	USA Today/ESPN
1. Duke	1. Connecticut
2. Michigan State	2. Duke
3. Connecticut	3. Michigan State
4. Auburn	4. Ohio State
5. Maryland	5. Kentucky
6. Utah	5. St. John's
7. Stanford	7. Auburn
8. Kentucky	8. Maryland
9. St. John's	9. Stanford
10. Miami, Fla.	10. Utah

1999-2000 Won 24, Lost 10 (9-7 SEC)
 COACH: Cliff Ellis
 CAPTAINS: Doc Robinson, Chris Porter

	AU	Opp.
Nov. 19 UAB (3,NR) (H) 65 59		
Nov. 21 Arkansas-Pine Bluff (3,NR)(H) 100 44		
Nov. 27 Stanford (2,7) (N1) 58 67		
Dec. 1 Belmont (5,NR) (H) 65 56		
Dec. 5 Florida State (5,NR) (H) 55 54		
Dec. 11 Pennsylvania (8,NR) (N2) 77 70		
Dec. 13 Coppin State (6,NR) (H) 63 35		
Dec. 16 Bradley (6,NR) (N3) 78 64		
Dec. 20 Puerto Rico-Mayaguez (6,NR)(A4) 109 52		
Dec. 21 Virginia Tech (6,NR) (N4) 73 63		
Dec. 22 Pepperdine (6,NR) (N4) 87 76		
Dec. 30 Southern Miss (4,NR) (H) 56 50		
Jan. 2 Stony Brook (4,NR) (H) 100 45		
Jan. 8 Georgia (4,NR) (H) 67 52		
Jan. 11 Kentucky (4,20) (H) 66 63		
Jan. 16 Mississippi State (4,NR) (A) 51 45		
Jan. 19 South Carolina (4,NR) (H) 65 61		

Jan. 22 Ole Miss (4,NR) (ot) (A) 77 79
Jan. 25 Tennessee (7,11) (A) 76 105
Jan. 29 Mississippi State (7,NR) (H) 73 57
Feb. 2 Alabama (10,NR) (H) 77 63
Feb. 5 Arkansas (10,NR) (H) 73 55
Feb. 9 LSU (8,25) (A) 68 83
Feb. 16 Vanderbilt (11,24) (A) 86 80
Feb. 19 Ole Miss (11,NR) (H) 75 72
Feb. 22 Alabama (8,NR) (A) 64 68
Feb. 27 Florida (8,9) (A) 59 88
Mar. 1 LSU (13,12) (H) 53 55
Mar. 5 Arkansas (13,NR) (A) 55 64
Mar. 10 Florida (23,10) (N5) 78 70
Mar. 11 So. Carolina (23,NR) (ot) (N5) 77 72
Mar. 12 Arkansas (23,NR) (N5) 67 75
Mar. 16 Creighton (22,NR) (N6) 72 69
Mar. 18 Iowa State (22,6) (N6) 60 79
(N1) Wooden Classic, Arrowhead Pond, Anaheim, Calif.
(N2) Arby's Hardwood Classic, BJCC, Birmingham, Ala.
(N3) Coors Classic, Mitchell Center, Mobile, Ala.
(N4) San Juan Shootout, Morales Coliseum, San Juan, P.R.
(N5) SEC Tournament, Georgia Dome, Atlanta, Ga.
(N6) NCAA Tourney 1st/2nd Rounds, Minneapolis, MN

2000 Final Rankings

Associated Press	USA Today/ESPN
1. Duke	1. Michigan State
2. Michigan State	2. Florida
3. Stanford	3. Iowa State
4. Arizona	4. Duke
5. Temple	5. Stanford
6. Iowa State	6. Oklahoma State
7. Cincinnati	7. Cincinnati
8. Ohio State	8. Arizona
9. St. John's	9. Tulsa
10. LSU	10. Temple
24. Auburn	

2000-01 Won 18, Lost 14 (7-9 SEC)
 COACH: Cliff Ellis
 CAPTAINS: Scott Pohlman, Reggie Sharp

	AU	Opp.
Nov. 17 Florida A&M (H) 87 52		
Nov. 19 Jacksonville State (H) 91 51		
Nov. 20 Mercer (H) 88 92		
Nov. 24 Robert Morris (N1) 89 71		
Nov. 25 Toledo (2ot) (N1) 90 95		
Nov. 26 Providence (N1) 80 69		
Dec. 1 South Alabama (H) 66 68		
Dec. 4 Louisiana-Lafayette (H) 93 86		
Dec. 5 Grambling (H) 104 60		
Dec. 9 Detroit (N2) 75 72		
Dec. 16 Oregon (ot) (N3) 101 97		
Dec. 19 Georgia Southern (H) 93 79		
Dec. 30 Southern Miss (H) 73 69		
Jan. 6 Tennessee (NR,5) (2ot) (H) 88 96		
Jan. 10 Georgia (ot) (A) 80 85		
Jan. 13 LSU (H) 85 69		
Jan. 17 Arkansas (A) 72 82		
Jan. 20 South Carolina (A) 60 57		
Jan. 24 Florida (NR,14) (H) 63 65		
Jan. 27 Alabama (NR,15) (A) 80 81		
Jan. 31 Mississippi State (H) 60 56		
Feb. 3 Ole Miss (H) 70 74		
Feb. 10 LSU (A) 76 65		
Feb. 14 Arkansas (H) 71 63		
Feb. 17 Mississippi State (A) 74 85		
Feb. 21 Alabama (NR,14) (ot) (H) 72 69		
Feb. 24 Ole Miss (NR,12) (A) 62 64		
Feb. 28 Kentucky (NR,15) (A) 78 90		
Mar. 3 Vanderbilt (H) 69 66		
Mar. 8 Tennessee (NR,24) (N4) 66 73		
Mar. 14 Miami, Fla. (NIT) (H) 60 58		
Mar. 20 Purdue (NIT) (A) 61 79		
(N1) Energia Systems Thanksgiving Tour., Kansas City, Mo.		
(N2) Arby's Hardwood Classic, BJCC, Birmingham, Ala.		
(N3) Las Vegas Showdown, Las Vegas, Nev.		
(N4) SEC Tourney, Gaylord Enter. Center, Nashville, TN		

2001-02 Won 12, Lost 16 (4-12 SEC)
 COACH: Cliff Ellis
 CAPTAINS: Marquis Daniels, Adam Harrington

	AU	Opp.
Nov. 16 High Point (H) 63 59		

Nov. 18 Jacksonville State (H) 75 53
Nov. 24 Rutgers (A) 56 57
Nov. 27 Florida State (H) 78 74
Nov. 30 McNeese State (H) 67 55
Dec. 4 Louisiana Tech (H) 66 67
Dec. 8 Virginia (NR,7) (N1) 72 77
Dec. 15 Marshall (N2) 78 60
Dec. 18 South Alabama (H) 73 58
Dec. 20 UNC-Asheville (H) 83 38
Dec. 29 Southern Miss (H) 64 55
Jan. 5 Arkansas (H) 77 83
Jan. 9 Ole Miss (A) 65 69
Jan. 12 Alabama (NR,14) (H) 59 56
Jan. 16 Vanderbilt (A) 67 73
Jan. 19 LSU (A) 58 75
Jan. 22 Kentucky (NR,8) (H) 62 69
Jan. 27 Tennessee (A) 59 82
Jan. 30 Mississippi State (H) 64 72
Feb. 2 Arkansas (A) 60 62
Feb. 9 Georgia (NR,17) (H) 75 72
Feb. 13 Ole Miss (H) 65 62
Feb. 16 Mississippi State (A) 53 89
Feb. 20 Florida (NR,8) (A) 61 89
Feb. 23 South Carolina (H) 50 46
Feb. 27 Alabama (NR,6) (A) 68 73
Mar. 2 LSU (H) 54 59
Mar. 7 Florida (NR,11) (N3) 63 81
(N1) Arby's Hardwood Classic, Birmingham, Ala.
(N2) Coors Classic, Mobile, Ala.
(N3) SEC Tournament, Georgia Dome, Atlanta, Ga.

2002-03 Won 22, Lost 16 (8-8 SEC)
 COACH: Cliff Ellis
 CAPTAINS: Marquis Daniels, Derrick Bird

	AU	Opp.
Nov. 22 Wofford (H) 81 63		
Nov. 26 Georgia State (H) 100 71		
Dec. 1 Western Kentucky (N1) 70 89		
Dec. 2 Southeastern Louisiana (H) 77 47		
Dec. 4 South Carolina State (H) 85 65		
Dec. 8 Rutgers (H) 82 70		
Dec. 14 Murray State (H) 72 53		
Dec. 17 Western Michigan (H) 54 72		
Dec. 20 Puerto Rico-Mayaguez (A2) 94 64		
Dec. 21 Denver (N2) 63 58		
Dec. 22 Troy State (N2) 94 66		
Dec. 30 Southern Miss (H) 92 46		
Jan. 2 North Texas (H) 90 65		
Jan. 8 Vanderbilt (H) 62 59		
Jan. 11 Arkansas (A) 52 37		
Jan. 15 South Carolina (A) 67 60		
Jan. 18 Alabama (NR,9) (H) 77 68		
Jan. 22 Kentucky (24,8) (A) 51 67		
Jan. 25 Georgia (24,19) (A) 79 85		
Feb. 1 Tennessee (H) 57 60		
Feb. 5 Ole Miss (H) 77 71		
Feb. 8 LSU (H) 56 54		
Feb. 15 Alabama (A) 68 84		
Feb. 19 Mississippi State (NR,19) (H) 46 63		
Feb. 22 Ole Miss (A) 80 75		
Feb. 26 LSU (A) 63 94		
Mar. 1 Florida (NR,4) (H) 70 73		
Mar. 5 Arkansas (H) 69 54		
Mar. 8 Mississippi State (NR,21) (A) 45 67		
Mar. 14 Tennessee (N3) 66 53		
Mar. 15 Kentucky (NR,2) (N3) 58 78		
Mar. 21 Saint Joseph's (ot) (N4) 65 63		
Mar. 23 Wake Forest (NR,8) (N4) 68 62		
Mar. 28 Syracuse (NR,12) (N5) 78 79		
(N1) Nashville, Tenn., Gaylord Entertainment Center		
(A2, N2) San Juan Shootout, Caguas, P.R.		
(N3) SEC Tournament, Superdome, New Orleans, La.		
(N4) NCAA Tournament 1st/2nd Rounds, Tampa, Fla.		
(N5) NCAA Tournament Sweet 16, Albany, N.Y.		

2003-04 Won 14, Lost 14 (5-11 SEC)
 COACH: Cliff Ellis
 CAPTAIN: Kyle Davis

	AU	Opp.
Nov. 17 College of Charleston (H1) 66 62		
Nov. 21 Western Kentucky (H) 86 64		
Nov. 23 Maryland-Eastern Shore (H) 85 61		
Nov. 29 Grambling State (N1) 105 56		
Dec. 1 Colorado State (H) 84 54		

2007-08 Outlook
 2007-08 Tigers
 Coaching Staff
 2007-08 Opponents
 2006-07 Review
 Tiger Records
 AU Hoop History
 Tiger Tracks
 Administration



Dec. 7	Air Force	(H)	68	49
Dec. 10	Montana	(H)	73	51
Dec. 20	UNLV	(A1)	69	82
Dec. 22	Georgia State	(H)	72	77
Dec. 30	Southern Miss	(H)	78	60
Jan. 2	New Orleans	(H)	70	55
Jan. 7	Vanderbilt (NR,20)	(A)	53	59
Jan. 10	Ole Miss	(H)	80	53
Jan. 14	South Carolina (ot)	(H)	51	53
Jan. 17	Alabama	(A)	46	69
Jan. 21	Arkansas	(H)	70	63
Jan. 24	Florida (NR,17)	(A)	52	68
Jan. 31	Mississippi State (NR,11)	(H)	68	73
Feb. 4	Arkansas	(A)	52	74
Feb. 7	Georgia	(H)	57	54
Feb. 14	Ole Miss	(A)	68	72
Feb. 18	LSU (NR,24)	(A)	80	68
Feb. 21	Kentucky (NR,9)	(H)	59	68
Feb. 24	Alabama	(H)	71	72
Feb. 28	Tennessee	(A)	69	75
Mar. 2	Mississippi State (NR,5)	(A)	91	105
Mar. 6	LSU	(H)	78	66
Mar. 11	Georgia	(N2)	59	73

(H1) NABC Classic, Auburn, Ala.
(N1) Hunstville, Ala.
(A1) Las Vegas Showdown, Las Vegas, Nev.
(N2) SEC Tournament, Georgia Dome, Atlanta, Ga.



JEFF LEBO
2004 - Present
3 Years
Record: 43-48
(15-33 SEC)

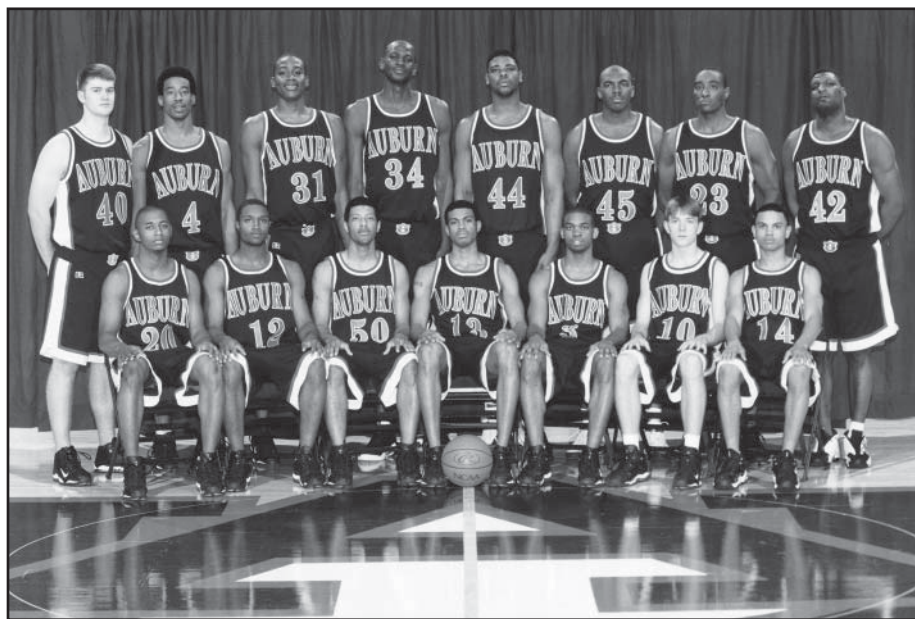
2004-05 Won 14, Lost 17 (4-12 SEC)
COACH: Jeff Lebo
CAPTAINS: Nathan Watson, Ian Young,
Quinnel Brown

			AU	Opp.
Nov. 19	Temple	(A)	80	78
Nov. 22	Furman	(H)	85	74
Nov. 24	Nicholls State	(H)	92	78
Nov. 27	Louisiana Tech	(H)	79	67
Nov. 30	Colorado State (ot)	(H)	79	76
Dec. 3	Virginia (NR,24)	(N1)	87	89
Dec. 5	Wofford	(H)	78	85
Dec. 7	College of Charleston	(A)	76	61
Dec. 12	UNLV (ot)	(H)	87	91
Dec. 20	Delaware	(N2)	74	46
Dec. 21	Middle Tennessee State	(N2)	79	74
Dec. 22	Toledo	(N2)	65	68
Dec. 30	Belmont	(H)	73	69
Jan. 5	Mississippi State (NR,18)	(A)	53	90
Jan. 12	Florida (ot)	(H)	78	84
Jan. 15	Ole Miss	(H)	72	79
Jan. 22	Arkansas	(A)	59	95
Jan. 26	Alabama (NR,14)	(H)	55	60
Jan. 29	Tennessee	(H)	62	59
Feb. 2	Ole Miss	(A)	55	70
Feb. 5	Mississippi State	(H)	90	76
Feb. 9	LSU	(A)	69	90
Feb. 12	South Carolina	(A)	74	71
Feb. 16	Vanderbilt	(H)	43	67
Feb. 19	Georgia	(A)	45	57
Feb. 23	Kentucky (NR,5)	(A)	73	81
Feb. 26	LSU	(H)	64	77
Mar. 2	Alabama (NR,19)	(A)	53	94
Mar. 5	Arkansas	(H)	77	64
Mar. 10	Vanderbilt	(N3)	77	73
Mar. 11	LSU	(N3)	58	89

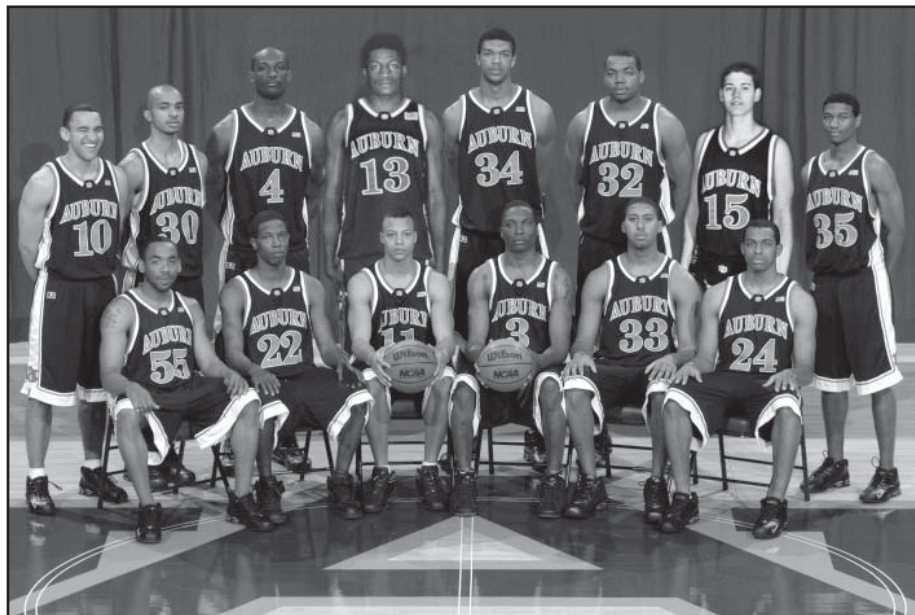
(N1) Richmond, Va. (Siegel Center)
(N2) San Juan Shootout (Carolina, P.R.)
(N3) SEC Tournament, Georgia Dome, Atlanta, Ga.

2005-06 Won 12, Lost 16 (4-12 SEC)
COACH: Jeff Lebo
CAPTAINS: Ronny LeMelle, Frank Tolbert

			AU	Opp.
Nov. 20	Lipscomb	(H)	69	54
Nov. 25	Gardner-Webb	(H)	70	43



1999 SEC Champions, NCAA Tournament Sweet 16
(Sitting L-R): Corey Watkins, Jay Heard, Doc Robinson, Bryant Smith, Reggie Sharp, Scott Pohlman, Charlton Barker. (Standing): Abe Smith, Chris Porter, Mack McGadney, Mamadou N'diaye, David Hamilton, Adrian Person, Daymeon Fishback, Adrian Chilliest.



2003 NCAA Tournament Sweet 16
(Sitting L-R): Chris Lollar, Lewis Monroe, Derrick Bird, Marquis Daniels, Donny Calton, Nathan Watson. (Standing): Troy Gaines, Jamaal Arnold, Marco Killingsworth, Brandon Robinson, Kyle Davis, Rodney Tucker, Danny Wicke, Jonathan Lewis.

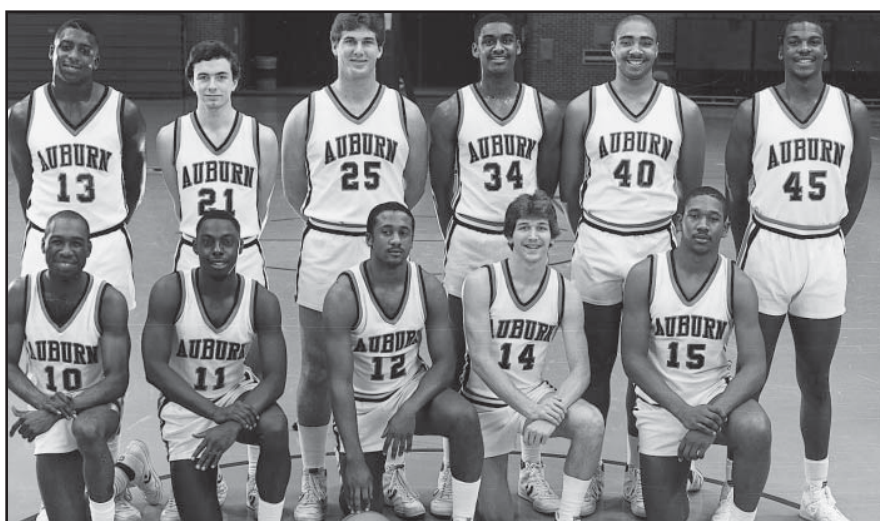
Nov. 28	Colorado State	(A)	67	77
Dec. 1	McNeese State	(H)	91	76
Dec. 4	Pittsburgh	(A)	41	78
Dec. 14	Southeastern Louisiana	(H)	66	51
Dec. 18	Temple	(H)	73	42
Dec. 22	Texas A&M	(A)	67	72
Dec. 29	Winthrop	(H)	64	62
Dec. 31	Jacksonville State	(H)	87	83
Jan. 4	Southern Miss	(H)	80	57
Jan. 7	Vanderbilt	(A)	50	74
Jan. 11	Alabama	(H)	52	56
Jan. 14	Florida (NR,2)	(A)	57	69
Jan. 21	Arkansas	(H)	52	68
Jan. 24	Kentucky	(H)	62	71
Jan. 28	Georgia	(H)	66	65
Feb. 1	LSU (NR,24)	(A)	69	84
Feb. 4	Mississippi State	(A)	53	71
Feb. 8	Ole Miss	(H)	58	50
Feb. 11	Arkansas	(A)	64	84
Feb. 15	Tennessee (NR,8)	(A)	89	105
Feb. 18	LSU (NR,25)	(H)	61	65
Feb. 22	Mississippi State	(H)	75	71
Feb. 25	Ole Miss	(A)	58	54
Mar. 1	Alabama	(A)	61	71
Mar. 4	South Carolina	(H)	63	67
Mar. 9	Vanderbilt	(N1)	71	76

2006-07 Won 17, Lost 15 (7-9 SEC)
 COACH: Jeff Lebo
 CAPTAINS: Quantez Robertson, Korvotney Barber, Rasheem Barrett

		AU	Opp.
Nov. 10	Troy	(H)	71 68
Nov. 17	Winston-Salem State	(H)	95 62
Nov. 19	East Tennessee State	(H1)	64 58
Nov. 21	Miles College	(H1)	79 58
Nov. 24	Oklahoma State	(N2)	65 66
Nov. 25	Wisconsin (NR,7)	(N2)	63 77
Nov. 28	Nicholls State (ot)	(H)	92 87
Nov. 30	Louisiana-Monroe	(H)	81 60
Dec. 3	Pittsburgh (NR,2)	(H)	66 74
Dec. 6	South Alabama	(H)	82 71
Dec. 16	Wofford	(H)	86 76
Dec. 19	Tennessee State	(H)	86 59
Dec. 22	Texas A&M (NR,13)	(H)	58 87
Dec. 30	Charleston Southern	(H)	69 53
Jan. 2	Southern Miss	(A)	54 56
Jan. 6	Vanderbilt	(H)	68 65
Jan. 8	Kentucky	(A)	57 84
Jan. 13	LSU (NR,13)	(A)	63 65
Jan. 17	Tennessee (NR,22)	(H)	83 80
Jan. 20	Mississippi State	(A)	76 87
Jan. 23	Alabama (NR,12)	(H)	81 57
Jan. 27	Florida (NR,1)	(H)	66 91
Jan. 31	South Carolina	(A)	80 75
Feb. 3	Ole Miss	(H)	59 82
Feb. 7	Arkansas	(A)	57 65
Feb. 10	Mississippi State	(H)	83 91
Feb. 17	Georgia	(A)	79 86
Feb. 21	Arkansas	(H)	67 59
Feb. 24	Alabama (NR,25)	(A)	86 77
Feb. 28	LSU	(H)	80 68
Mar. 3	Ole Miss	(A)	79 83
Mar. 8	Georgia	(N3)	65 80

(H1) South Padre Inv. (Auburn, Ala.)
 (N2) South Padre Inv. (South Padre Island, Texas)
 (N3) SEC Tournament, Georgia Dome, Atlanta, Ga.

Numbers in parenthesis correspond to Auburn's national ranking first and opponent's national ranking heading into the game beginning with the 1950-51 season.



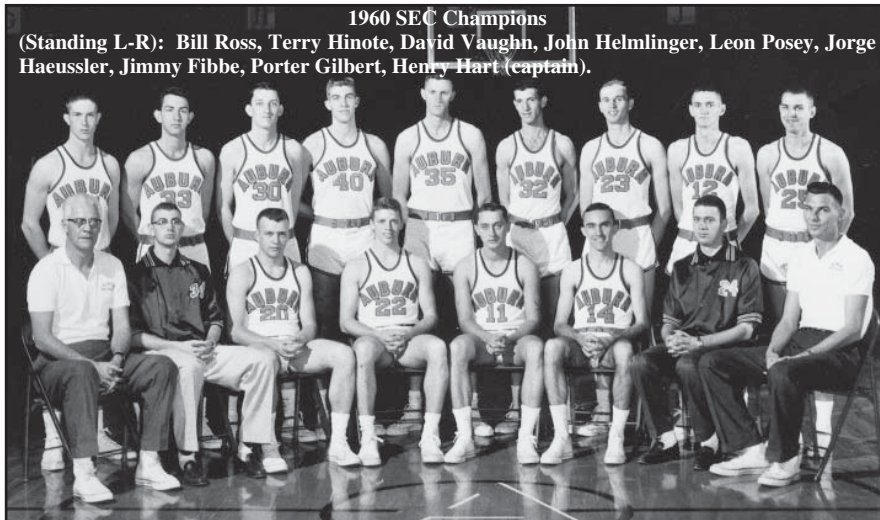
1986 NCAA Elite Eight

(L-R Kneeling): Terrance Howard, Melvin Harralson, Gerald White, Johnny Lynn, Frank Ford.
 Standing: Mike Jones, Rob Jones, Gary Godfrey, Chris Morris, Jeff Moore, Chuck Person.



1985 SEC Tournament Champions, NCAA Tournament Sweet 16

(Sitting L-R): Terrance Howard, Rodney Turner, Gerald White, Johnny Lynn, Frank Ford, Gary Godfrey, Vern Strickland; (Middle Row): Rick Stukes (G.A.), Mack McCarthy (Asst. Coach), Sonny Smith (Head Coach), Lawrence Johnson (Asst. Coach), Tevester Anderson (Asst. Coach); (Back Row): Darren Guest, Carey Holland, Chris Morris, Jeff Moore, Chuck Person, Howard Spencer.



1960 SEC Champions

(Standing L-R): Bill Ross, Terry Hinote, David Vaughn, John Helmlinger, Leon Posey, Jorge Haeussler, Jimmy Fibbe, Porter Gilbert, Henry Hart (captain).