



WOMEN'S TENNIS

2023 MEDIA GUIDE



TABLE OF CONTENTS

Quick Facts 1
 2022-23 Schedule..... 2
 2022-23 Roster..... 3
 Head Coach Caroline Lilley 4-5
 Associate Head Coach Megan Falcon 6
 Player Bios..... 7-22
 Facilities..... 23
 2022-23 Individual Statistics..... 24
 Individual Records..... 25
 Head Coaching Records..... 26
 Awards and Honors 27-28
 All-Time Record vs. Opponents 29
 Year-by-Year Results..... 30-42
 Final ITA Rankings..... 43
 All-Time Roster..... 44

MEDIA INFORMATION

INTERVIEWS

All interview requests for Auburn head coach Caroline Lilley and Auburn student-athletes should be made to Riley Hubbard. Interviews on match day will be conducted following the conclusion of competition. Events to all home events are free and media are not credentialed.

AUBURNTIGERS.COM

AuburnTigers.com is the official home for information on the Auburn men's tennis team, as well as head coach Caroline Lilley. The website includes rosters and the 2022-23 schedule. Information is also available on Facebook and Twitter.

FACILITIES

The home of the Auburn men's and women's tennis programs is the award-winning Yarbrough Tennis Center, owned by the City of Auburn. The facility has six indoor courts, along with 12 outdoor courts. All of Auburn's home matches are played at this facility. The Yarbrough Tennis Center also holds team locker rooms, coaches' offices and a training room.

QUICK FACTS

GENERAL INFORMATION

School..... Auburn University
 City / Zip Auburn, Ala. / 36831
 Founded Oct. 1, 1856
 Enrollment 30,737
 Nickname Tigers
 Colors..... Burnt Orange and Navy Blue
 Facility Yarbrough Tennis Center
 Affiliation..... NCAA Division I
 Conference Southeastern Conference
 President Dr. Christopher B. Roberts
 Alma Mater Missouri (1990)
 Athletic Director John Cohen
 Alma Mater Mississippi State (1990)
 University Website www.Auburn.edu

COACHING STAFF

Head Coach Caroline Lilley (Georgia Tech, 2012)
 Season..... 3rd
 Overall Record at Auburn..... 64-30 (.681)
 Assistant Coach..... Megan Falcon (LSU, 2009)
 Season..... 2nd
 Office Phone (334) 844-9751

TENNIS INFORMATION

Inaugural Season..... 1950
 Season of Tennis 72st
 All-Time Record..... 820-636 (.563)
 NCAA Tournament Appearances..... 22

MEDIA RELATIONS

Women's Tennis SID..... Riley Hubbard
 E-mail..... rhubbard@auburn.edu
 Cell Phone 334.707.6444
 Main Office Phone 334.844.9800
 Website www.AuburnTigers.com
 Facebook facebook.com/AuburnWTennis
 Twitter @AuburnWTennis
 Instagram @AuburnWTennis

2022-23 media guide design and updates by Auburn communications assistant Riley Hubbard

Date	Opponent	Result
1/20	Iowa State	W 5-2
1/22	North Carolina	L 6-1
1/22	Samford	W 7-0
1/28	UCSB	W 4-2
1/29	UCF	W 4-1
2/5	@ Texas Tech	W 4-3
2/10	Ohio State (ITA Indoors)	L 4-0
2/11	San Diego (ITA Indoors)	W 4-3
2/12	Pepperdine (ITA Indoors)	W 4-2
2/19	Belmont	W 6-1
2/19	UAB	W 7-0
2/25	@ North Florida	W 4-3
3/5	Alabama	W 4-3
3/10	Ole Miss	W 4-3
3/12	Mississippi State	W 6-1
3/17	@ Tennessee	L 6-1
3/19	@ Georgia	L 5-2
3/24	LSU	W 4-3
3/26	Texas A&M	L 5-2
3/31	@ Kentucky	W 5-2
4/2	@ Vanderbilt	W 5-2
4/7	Arkansas	L 6-1
4/9	@ Missouri	W 4-0
4/14	South Carolina	W 5-2
4/16	Florida	L 5-2
4/20	Ole Miss*	L 4-3
5/5	FIU**	W 4-3
5/6	Miami**	W 4-3
5/13	NC State***	L 4-0

* SEC Championships (Fayetteville, AR)

** NCAA Opening Rounds (Coral Gables, FL)

***NCAA Super Regionals (Raleigh, NC)



2022-2023 ROSTER



Carolyn Ansari
Senior
Greensboro, NC



Ariana Arseneault
Junior
Richmond Hill, Canada



Anastasia Astakhova
Junior
Karaganda, Kazakhstan



DJ Bennett
Freshman
Bellview, FL



Kaitlyn Carnicella
Freshman
Whippany, NJ



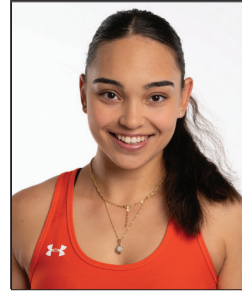
Ali Despain
Graduate Student
Hilton Head, SC



Adeline Flach
Junior
Alpharetta, GA



Angella Okutoyi
Freshman
Nairobi, Kenya



Selin Ovunc
Senior
Ankara, Turkey

COACHING/SUPPORT STAFF



Caroline Lilley
Head Coach



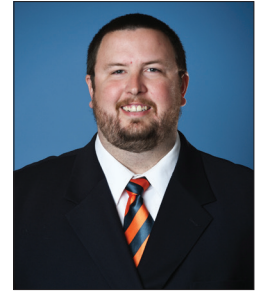
Megan Falcon
Associate Head Coach



Misti Higgs
Director of Operations



Riley Hubbard
Sports Information
Director



Kevin Fuhrer
Equipment Manager



Joe D'Amato
Strength & Conditioning
Coach



Amanda Lyon
Trainer



Jordan Chen
Team Dietitian



Bill Shannon
Sport Administrator



CAROLINE LILLEY

HEAD COACH

The 2023-24 season will be Caroline Lilley's fifth year as the Auburn women's tennis head coach. She was named head coach on June 14, 2019.

Lilley earned her third NCAA Tournament bid and second consecutive trip to the NCAA Super Regional in 2023. Auburn completed their season with a 20-9 overall record which marked the seventh season that Auburn has reached the 20-win mark. The Tigers picked up five wins over top 25 opponents including over No. 17 San Diego and No. 8 Pepperdine during the 2023 ITA Indoor Championships as well as a 4-3 upset victory over No. 14 Miami in the NCAA Second Round. After each earning a bid into the NCAA Singles Championships, Carolyn Ansari and Ariana Arseneault each advanced to the round of 16, which earned the duo the third and fourth Singles All-American honors in program history. Additionally, Ansari was named first team All-SEC, Arseneault was named second team All-SEC, and DJ Bennett became the sixth Auburn player to earn SEC All-Freshman honors.

In her third season on the Plains in 2022, Lilley matched the deepest run in program history, advancing to the NCAA Super Regional for the first time since 2017. The Tigers finished with a 22-6 overall record and finished the season ranked 14th in the nation. It was also a history-making SEC season as Auburn went 11-2 in league play and finished second in the final standings, the highest SEC finish by an Auburn women's tennis

team. Auburn also picked up six wins over top-25 opponents including No. 15 Florida, No. 16 Washington and No. 19 Alabama. The Auburn trio of Selin Ovunc, Carolyn Ansari and Ariana Arseneault were all named first team All-SEC. Ovunc was selected to the NCAA singles field and the tandem of Ovunc and Arseneault earned a berth in the doubles tournament as well. After the season, Lilley was named the ITA Southern Region Coach of the Year.

In her second season, Lilley has helped the Tigers to tremendous success, including a berth in the 2021 NCAA Tournament, where Auburn advanced to the second round. Auburn posted an overall record of 14-9 with a 7-6 mark in SEC play, finishing sixth in the final conference standings. Under her leadership, sophomore Selin Ovunc became the program's seventh All-American (and second in singles) by advancing to the Round of 16 at the NCAA Championships. Ovunc and Carolyn Ansari were named to the All-SEC Second Team, and senior Taylor Russo was named the regional winner of the ITA Cissie Leary Sportsmanship Award. In Lilley's first full season at the helm of the program, Auburn finished with a national ranking of No. 22.

Lilley's first season at Auburn in 2020, while shortened by the global COVID-19 pandemic, showed great promise as the Tigers had recorded an 8-6 record in dual matches and a 1-3 mark in SEC play when the season was halted in March. Several student-athletes

earned conference and regional accolades: senior Taylor Russo was named ITA Southern Region Senior Player of the Year and to the SEC Community Service Team, and freshman Selin Ovunc was the ITA Southern Region Rookie of the Year. Russo and Ovunc teamed up in doubles to win the ITA Southern Regional championship and were ranked as high as No. 9 nationally. As a team, the Tigers were No. 42 nationally in the final published ITA ranking of the spring.

Lilley spent the previous four seasons at the University of Kansas where she helped the Jayhawks to four consecutive NCAA Tournament appearances, including the program’s first-ever Big 12 Conference Championship in 2019.

Named assistant head coach at Kansas in December 2018, Lilley joined the KU staff as an assistant coach in May 2015 after a successful stint as an assistant coach at Gonzaga.

During the 2019 season, Lilley helped KU to a 21-4 record, a trip to the NCAA Sweet 16 and the Big 12 title. The Jayhawks were ranked for 16 consecutive weeks during the season, peaking at No. 7 before finishing No. 13 in the final polls. Three Jayhawks, Nina Khmelnitckaia, Janet Koch and Anastasia Rychagova all earned first-team All-America honors by the Intercollegiate Tennis Association (ITA). The doubles team of Koch and Khmelnitckaia reached the No. 1 ranking in the country, and Kansas as a team did not lose a doubles point all season.

She made her presence felt immediately at Kansas in her first spring season in 2016, helping the Jayhawks reach the NCAA Tournament for the first time in 17 years. Kansas finished second in the Big 12 Conference, the Jayhawks highest finish in 18 years. The four consecutive NCAA Tournament appearances were a program first since earning four-straight berths from 1996-99.

In 2018 Lilley helped lead KU to its first victory in the NCAA Tournament since 1999.

National rankings became the norm for KU tennis after Lilley’s arrival; the Jayhawks appeared in the ITA rankings in all or part of every season Lilley coached at KU. In 2018 KU spent 11-straight weeks in the top-20,

including a season-ending ranking of 18 in 2018, the program’s highest end-of-season ranking since 1998 (17th).

Individual players earned national rankings under Lilley’s tutelage. In fall 2017 junior Anastasia Rychagova became the first Jayhawk singles player to be ranked No. 1 in the country, and in May 2018 she became KU’s first singles All-American in 20 years.

In recognition of her work at KU, Lilley was voted ITA Central Region Assistant Coach of the Year in 2018.

A Portland, Oregon native, Lilley spent the two seasons prior to joining the KU staff as an assistant coach at Gonzaga, where in 2014 the Zags earned at Top 75 national ranking for the first time in program history, a feat they repeated in 2015. With her help Gonzaga signed the #7 recruiting class for mid-major schools, the highest-ranked recruiting class in school history.

National recognition is nothing new for Lilley. She had an accomplished playing career at both Kentucky (freshman and sophomore years) and Georgia Tech (junior and senior years). She was ranked with five different doubles partners throughout her college career, with a high of No. 6. She was nationally ranked in singles as well, with a high of No. 67.

As a junior she posted a personal-best 26-12 singles record, contributing to Georgia Tech’s consistent presence as a top-15 program in the country.

Graduating with a business administration degree with a concentration in finance, Lilley left Georgia Tech with the second-best doubles winning percentage in Tech’s history – 69 percent (38-17, including 20-7 in dual match play).

Lilley earned her MBA, with a concentration in finance, from Kansas in 2018.

Coaching Experience

Years	Position	University
2019-present	Head Coach	Auburn
2018-2019	Asst. Head Coach	Kansas
2015-2017	Asst. Coach	Kansas
2014-2015	Asst. Coach	Gonzaga



MEGAN FALCON

ASSOCIATE HEAD COACH

Megan Falcon was named associate head coach for Auburn women's tennis on July 12, 2021.

Falcon was associate head coach for the Jayhawks from 2019-21, which followed a three-year stint as assistant coach at Wisconsin. As a student-athlete at LSU, she was one of their most decorated players in program history as a three-time All-American, NCAA singles semifinalist and 2007 SEC Player of the Year.

In her two years at Kansas, Falcon saw the team post a 7-4 record during the pandemic-shortened 2020 season, peaking at No. 19 in the nation. She also mentored three nationally ranked singles players and three ranked doubles teams while with the Jayhawks.

At Wisconsin, Falcon helped lead the Badgers to a runner-up finish in the Big Ten in 2019 - the team's highest finish since 2002 - and their first NCAA Tournament berth since 2005. She helped engineer a 14-win improvement from her first season to her third with Wisconsin and saw Sara Castellano named to the All-Big Ten first team in 2019.

She was an assistant coach at Gonzaga during the 2015-16 season, where the Bulldogs set a program record with 16 wins and finished second in the West Coast Conference, the highest finish in program history.

Falcon began her coaching career as the Director of Junior Tennis at Bocage Racquet Club in Baton Rouge, La.

A native of Alameda, Calif., Falcon

finished her collegiate career as one of the top players in LSU women's tennis history. In her LSU career, Falcon reached No. 1 in the nation in singles and the No. 10 ranking in doubles. The 2007 SEC Player of the Year and three-time All-SEC First Team selection, Falcon was voted one of the 30 greatest LSU Tiger student-athletes of the decade after participating in the 2007 Pan American Games and being named finalist for the 2007 Honda National Player of the Year Award.

Falcon also spent two seasons on the professional circuit, attaining a WTA Ranking of 331 in singles and 413 in doubles. An ITA Scholar-Athlete, Falcon graduated with a degree in history and international studies from LSU in 2009.



CAROLYN ANSARI

SR- GREENSBORO, NC

- ITA Singles All-American (2023)**
- 2x All-SEC First Team (2023,2022)**
- All-SEC Second Team (2021)**
- SEC All-Newcomer Team (2021)**
- ITA Southern Region Senior Player of the Year (2023)**
- ITA Southern Region Most Improved Senior (2023)**
- SEC Academic Honor Roll (2020, 2021, 2022)**
- SEC Newcomer of the Week (April 14, 2021)**

As a Senior

Spring 2023: Earned ITA Singles All-American honors by recording two wins at the NCAA Singles Championships ... Named first team All-SEC for the second season in a row ... Finished the season ranked 29th in singles and 32nd in doubles by the ITA ... posted a 21-16 singles record and an 18-16 doubles record overall ... recorded nine wins over ranked opponents (four in dual matches) ... Upset fifth ranked Alexa Noel, the highest ranked win of her career, in the NCAA Singles Championship 2-6, 7-6 (6), 6-3 ... Recorded a 6-1, 7-5 victory over Georgia's Dasha Vidmanova, who was ranked 12th in the nation in singles ... South Carolina's No. 20 Sarah Hamner 6-4, 6-2 ... Delivered the match clinching point against both No. 17 San Diego and No. 8 Pepperdine during the ITA Indoor Championships in Seattle ... played all dual doubles matches at No. 1 alongside partner Ariana Arseneault ... went 5-7 in singles and 5-6 in doubles in conference matches

Fall 2022: Was ranked preseason 91st in singles by the ITA ... Went 3-2 in singles and 6-2 in doubles during the fall ... all three singles victories were over ranked opponents including 17th ranked Kari Miller from Michigan and 46th ranked Giulia Morlet from Arizona State ... claimed two doubles victories over ranked opponents with partner Ariana Arseneault including 19th ranked team of Margaux Maquet/Lucia Quiterio of UNC Charlotte and 24th ranked Irina Cantos Siemers/Sydni Ratliff of Ohio State ... finished the fall ranked 71st in singles and ranked 10th in doubles alongside partner Ariana Arseneault

As a Junior

Spring 2022: Ranked No. 119 in the final ITA singles rankings ... Posted a 20-6 mark in singles and a 17-7 record in doubles in dual matches ... Including fall season, was 29-11 overall in singles and 24-13 in doubles ... Went 10-3 in

SEC singles play, 8-4 in doubles ... Played majority of singles matches at No. 3 position, going 18-5 at that spot ... Recorded seven wins over ranked opponents in singles ... Provided key momentum swing in NCAA Round of 32 match vs. Georgia Tech, winning second-set tiebreaker over No. 90 Kylie Bilchev, 6-4, 7-6 (6) to help spur comeback win for Auburn ... Provided clinching win over No. 16 Washington at ITA National Indoors with 7-5, 6-1 victory over No. 98 Nika Zupanic ... Helped secure Auburn's trip to National Indoors, defeating No. 102 Marie Mattel 6-2, 6-4, in a 4-0 win at No. 10 UCF ... Other ranked wins in the spring: No. 77 Sydni Ratliff (Ohio State), 6-4, 6-2 ... No. 102 Petra Sedlackova (Alabama), 6-1, 4-6, 6-2 ... No. 94 Ena Babic (LSU), 7-5, 6-3 ... No. 111 Elza Tomase (Tennessee), 6-2, 2-6, 6-3 ... Played majority of spring doubles with Madeline Meredith at No. 3 position ... Clinched doubles point in NCAA Super Regional match at Texas with 6-4 win over Zeynalova/Ovrootsky ... Provided the clinching doubles point in seven total matches during the spring, including Auburn wins over Missouri, Arkansas, Mississippi State, Vanderbilt and UCF ... Ranked No. 7 in final regional singles rankings ... Along with Meredith, was No. 5 in regional doubles rankings ... Ranked as high as No. 81 nationally during spring season ... Named to All-SEC First Team ... SEC Academic Honor Roll.

Fall 2021: Played in four tournaments, picking up eight singles wins and five doubles victories ... Competed at ITA All-American in the qualifying rounds ... Defeated No. 124 Sarah-Maude Fortin of Washington, 6-4, 5-4 ret., in a consolation match ... Went 3-0 in doubles at the UNF Fall Invitational with Madeline Meredith ... Earned highest-ranked win over the year with a 6-4, 3-6, 1-0 (10) victory over No. 68 Malkia Ngounoue (Kansas) at Kitty Harrison Invitational ... Advanced to round of 16 at ITA Southern Regional ... Ranked No. 45 in preseason singles rankings. Fall 2021: Played in four tournaments, picking up eight singles wins and five doubles victories ... Competed at ITA All-American in the qualifying rounds ... Defeated No. 124 Sarah-Maude Fortin of Washington, 6-4, 5-4 ret., in a consolation match ... Went 3-0 in doubles at the UNF Fall Invitational with Madeline Meredith ... Earned highest-ranked win over the year with a 6-4, 3-6, 1-0 (10) victory over No. 68 Malkia Ngounoue (Kansas) at Kitty Harrison Invitational ... Advanced to round of 16 at ITA Southern Regional ... Ranked No. 45 in preseason singles rankings.

As a Sophomore

Spring 2021: Ranked No. 67 nationally in the final ITA singles rankings ... Recorded a 14-3 record in singles and a 9-12 mark in doubles in dual matches ... Played most of the spring season at the No. 3 position before moving up to No. 2 singles for the SEC and NCAA Tournaments ... Recorded four wins over ranked opponents ... Defeated No. 12 Meg Kowalski of Georgia 6-1, 6-4, in final dual match of regular season, handing Kowalski her first loss of the year ... Earned SEC Newcomer of the Week (4/13) honors for her efforts against Georgia and Tennessee ... Earned 6-3, 6-0 win at Tennessee over No. 45 Carly Briggs ... Defeated Florida State's 44th-ranked Emmanuelle Salas 6-3, 6-0, in an NCAA Second Round match ... Downed South Carolina's 93rd-ranked Emma Shelton 4-6, 6-1, 6-2, to help Tigers to top-20 win over Gamecocks ... Provided clinching singles win over Florida's Ida Jarlskog, 4-6, 6-3, 6-3, for Auburn's first-ever win over the Gators ... Only lost three singles matches in dual season; went 7-2 in SEC play ... Finished season on six-match unbeaten streak and won seven of her last nine ... Played doubles with four different partners during spring season, the last half of the season with Selin Ovunc ... Earned one ranked win in doubles with Madeline Meredith, defeating No. 57 Jacobs/Tkachenko of Kentucky, 7-5 ... Won four doubles matches in SEC regular season, plus one in SEC Tournament (Arkansas) and one in NCAA Tournament First Round (Oklahoma State) ... Named to All-SEC Second Team and SEC All-Newcomer Team ... Ranked No. 6 in final ITA Southern Regional rankings ... Named to SEC Academic Honor Roll.

Fall 2020: Went 2-7 in singles and 5-4 in doubles in the fall with all matches coming against SEC competition ... Went 3-0 in doubles playing with Yu Chen, earning two wins at the SEC Challenge in Tuscaloosa ... Earned one singles win at both the Music City Scramble and the SEC Challenge.

As a Freshman

Spring 2020: Went 7-3 in dual singles matches, including a 2-1 mark in SEC matches ... Played primarily at the No. 5 singles position ... Was 5-6 in doubles play, 2-2 in SEC matches ... Went 2-2 playing with Lindsay Song and 5-8 paired with Yu Chen ... Earned a 6-1, 6-2 win over Kentucky's Anastasia Tkachenko to help secure Auburn's first SEC win of the season (3/8) ... Also helped clinch the doubles point in the Kentucky match, winning 6-3 at the No. 3 doubles

PLAYER BIOS

spot with Chen ... Fought back from dropping the first set to earn a 3-set win over Florida's Sydney Berlin, 0-6, 7-6 (4), 6-3 ... Went unbeaten in first seven singles matches in dual season ... Named to SEC First-Year Academic Honor Roll.

Fall 2019: Won five singles matches and four doubles matches in the fall tournament season ... Went 2-1 in doubles with Yu Chen at Rice invitational ... Won three singles matches at H-E-B Invitational.

Prior to Auburn

Ranked the No. 30 overall recruit in the class of 2019 ... No. 4 recruit in the state of North Carolina by TennisRecruiting.net ... Two-time North Carolina high school player of the year ... Earned a win in the ITF junior ranks over the No. 37-ranked player in the world.

ANSARI'S CAREER RESULTS

SINGLES

Year	Overall	Dual	SEC	No. 1	No. 2	No. 3	No. 4	No. 5	No. 6
2019-20	12-10	7-3	2-1	--	--	--	1-0	6-3	--
2020-21	16-10	14-3	7-2	--	3-0	11-3	--	--	--
2021-22	29-11	20-6	10-3	--	2-1	18-5	--	--	--
2022-23	21-16	14-12	5-7	0-5	14-7	--	--	--	--
Career	78-47	55-24	24-13	0-5	19-8	29-8	1-0	6-3	--

DOUBLES

Overall	Dual	SEC	No. 1	No. 2	No. 3
9-13	5-6	2-2	--	--	5-6
14-16	9-12	4-8	--	4-5	5-7
24-13	17-7	8-4	--	2-0	15-7
18-17	11-13	5-6	11-13	--	--
65-59	42-38	17-18	11-13	6-5	25-20



ARIANA ARSENEAULT

JR- RICHMOND HILL, CANADA

- ITA Singles All-American (2023)**
- All-American (Doubles - 2021)**
- All-SEC First Team (2022)**
- SEC Academic Honor Roll (2021, 2022)**

As a Junior

Spring 2023: Earned ITA Singles All-American honors by recording two wins at the NCAA Singles Championships ... Received second team All-SEC honors ... Finished the season ranked 27th in singles and 32nd in doubles with partner Carolyn Ansari by the ITA ... recorded a 23-17 overall singles record (16-11 in dual matches) playing mostly at the top of the singles lineup... posted 20-15 overall doubles record (11-13 in dual matches) ... played all dual doubles matches at No. 1 alongside partner Carolyn Ansari ... picked up 12 singles wins over ranked opponents during the season (six in dual matches) ... Highest ranked singles victory of the season came against then-No. 9 Ayana Akli of South Carolina 6-2, 6-2 ... Recorded win over then-No. 20 Janice Tjen of Pepperdine 6-4, 6-3 ... had a 7-6 singles record and a 5-6 doubles record in SEC matches

Fall 2022: Was ranked 61st in singles and 4th in doubles with partner Selin Ovunc... finished 5-4 in singles and 7-2 in doubles during the fall... claimed four wins over ranked opponents including 22nd ranked Carmen Corely of Oklahoma and 60th ranked Jaedan Brown of Michigan ... claimed two doubles victories over ranked opponents with partner Carolyn Ansari including 19th ranked team of Margaux Maquet/Lucia Quiterio of UNC Charlotte and 24th ranked Irina Cantos Siemers/Sydni Ratliff of Ohio State... finished the fall ranked 43rd in doubles and 10th in doubles alongside partner Carolyn Ansari

As a Sophomore

Spring 2022: Ranked No. 83 in the final ITA singles rankings ... Was No. 13 nationally in doubles along with Selin Ovunc ... Went 18-6 in dual matches and 28-9 overall in singles for the year, playing mostly at the No. 2 position ... Recorded a 14-5 mark in dual matches and 21-9 overall record in doubles, playing at the top spot ... Was 9-4 in SEC singles and 9-1 in doubles ... Earned eight wins over ranked opponents in singles and five in doubles ... Highest-ranked singles win came over NO. 40 Abigail Renscheli (NC State), 6-1, 7-6 (4) at ITA National Indoors ... Provided clinching win over No. 10 UCF with 7-5, 6-3 victory over No. 64 Valeriya Zeleva to secure Auburn's berth in National

Indoors ... Clinched Tigers' victory over No. 26 Tennessee with a 3-6, 6-2, 6-2 win over No. 52 Tenika McGiffin ... Also defeated McGiffin 6-2, 6-3 a week later in the SEC Tournament ... Other ranked wins in the spring: No. 69 Ava Hrastar (Georgia Tech), 6-3, 1-6, 6-3 ... No. 89 Carlota Molina (Kentucky), 6-2, 6-7 (10), 1-0 (4) ... No. 64 Marlee Zein (Florida), 6-7 (2), 6-4, 1-0 (5) ... No. 66 Dasha Vidmanova (Georgia), 6-3, 7-5 ... In doubles, teamed with Ovunc to defeat nation's No. 2 team twice ... Defeated No. 2 Killingsworth/Brylin of Wake Forest 6-3 at Carolina Kickoff ... Earned 6-3 win over No. 2 Goldsmith/Makarova of Texas A&M ... Back-to-back wins over top-20 opponents, defeating No. 17 Kuczer/McGiffin (Tennessee), 6-1, then taking down No. 16 Coppoc/Hertel (Georgia), 6-3, two days later ... Clinched doubles point in six matches ... Named to All-SEC First Team ... No. 5 in final regional singles rankings ... No. 1 in regional doubles rankings ... Ranked as high as No. 54 in singles and No. 9 in doubles ... SEC Academic Honor Roll.

Fall 2021: Played in three fall tournaments, earning eight wins in singles and five in doubles ... Went 3-0 with Ovunc at ASU Thunderbird Invitational ... Also went 3-0 in singles at ASU ... Advanced to quarterfinals at ITA Southern Regional.

As a Freshman (2020-21 at Georgia)

Helped Bulldogs win the SEC Regular Season and Tournament titles and advance to the quarterfinals of the NCAA Championships, posting a final record of 23-2 and final ITA national ranking of No. 4...Earned All-America honors in doubles with Katarina Jokic and pair finished ranked No. 4 nationally with a 15-7 record including 12-4 at No. 1 in the lineup...Final singles record of 6-5 and 16-10 in doubles...Named to the SEC First-Year Academic Honor Roll... Received a 5-8 seed for the NCAA Doubles Tournament with Jokic and fell in the first round...Concluded the regular season 5-0 against duos in the top-25, four of those wins coming against top-10 foes...Toppled the No. 1 ranked duo in the country in the quarterfinals of the SEC Tournament, defeated Akvile Parazinskaite and Fiona Arese of Kentucky with partner Jokic...Made dual match debut against No. 8 Florida State...Upset No 7 Victoria Allen and Petra Hule with Jokic...Competed in all three fall tournaments with Georgia... Notched ten wins, four doubles and six singles... secured her first win as a Bulldog against Carla Girbau 6-3, 6-0 of Kentucky at the SEC Challenge ... Named to SEC Academic Honor Roll.

Prior to College

Trained with Mike Hall at ACE Tennis in Burlington, Ontario, Canada and previously trained at the National Centre in Toronto...Had notable performances posting a win over the 10th-ranked ITF World junior player along with advancing to the quarterfinals of the ITF J1 event in Repentigny, Canada...Registered wins over three world ranked players including a straight set victory over Zhuoxuan Bai (China), who was ranked No. 27 in the ITF World Tennis Tour Junior Rankings... Captured two wins in qualifying at the ITF 80K event in Granby, Quebec to advance to the main draw...Defeated WTA No. 172 Rebecca Marino...Participated in the 2019 Rogers Cup Qualifying event after winning a pre-qualifying tournament. The Rogers Cup is a prestigious professional tournament organized by Tennis Canada with only Wimbledon and the US Open having longer histories than this major Canadian stop. Tennis Canada is a non-profit, national sport association.

Personal

Daughter of Serge and Anastasia Arseneault... Has two brothers, Mikael and Nicolas.

ARSENAULT'S CAREER RESULTS

SINGLES										DOUBLES					
Year	Overall	Dual	SEC	No. 1	No. 2	No. 3	No. 4	No. 5	No. 6	Overall	Dual	SEC	No. 1	No. 2	No. 3
2020-21*	6-5	0-2	--	--	--	--	--	--	0-2	16-10	12-4	7-3	12-4	--	--
2021-22	28-9	18-6	9-4	1-0	17-6	--	--	--	--	21-9	14-5	9-1	14-5	--	--
2022-23	23-17	16-11	7-6	11-10	5-1	--	--	--	--	20-15	11-13	5-6	11-13	--	--
Career	57-31	34-18	16-10	22-10	22-7	--	--	--	0-2	57-34	37-22	21-10	37-22	--	--



ANASTASIA ASTAKHOVA

SR- KARAGANDA, KAZAKHSTAN

SEC Academic Honor Roll (2022)

As a Junior

Spring 2023: Finished season with 7-9 overall singles record and 3-2 overall doubles record ... Played in one dual match and won doubles match over Belmont alongside partner Ali DeSpain

Fall 2022: Went 6-8 in singles and 1-3 in doubles during the fall... Claimed one ranked doubles victory with partner Adeline Flach over 15th ranked Nell Miller/Amelia Rajecki of NC State ... finished fall ranked 33rd in doubles alongside partner Adeline Flach

As a Sophomore

Spring 2022: Went 2-1 in singles and 2-0 in doubles in dual matches ... Recorded an 8-9 overall singles mark and 8-7 in doubles ... Went 2-0 in singles at Carolina Kickoff with straight-set wins over Maddie Lynch (Wake Forest) and Kendall Couch (South Carolina) ... Played at No. 6 singles against Furman, UAB and Alabama A&M in dual matches ... Defeated UAB's Enya Ratkic, 6-3, 6-4 ... Topped Alabama A&M's Kennedy Ward, 6-0, 6-0 ... Teamed with Madeline Meredith for a pair of doubles wins against Furman and Alabama A&M ... Named an ITA Scholar-Athlete ... SEC Academic Honor Roll.

Fall 2021: Played in four fall tournaments ... Earned three singles wins and five doubles victories ... Went 2-1 in singles at Wahoowa Invitational ... Posted 2-1 doubles record with Meredith at Roberta Alison Classic.

As a Freshman

Spring 2021: Enrolled at Auburn in January 2021 ... Posted a 2-6 record in singles and 5-6 mark in doubles ... Made Auburn debut March 11 vs. Mississippi State, earning wins in both singles and doubles ... Teamed with Carolyn Ansari to defeat MSU's Falceto/Antonaki 6-2 in doubles, then downed Falceto 6-1, 6-4, at the No. 6 singles spot ... Provided key victory in Auburn win at Arkansas with 6-2, 7-6 (5) defeat of Jackie Carr ... Recorded four doubles wins with Yu Chen at the No. 3 spot.

Prior to Auburn

Top-ranked junior player in Kazakhstan for three years (2017-19) ... Two-time ITF Doubles Champion ... Extensive experience on the junior circuit, making deep runs in both singles and doubles at the highest level ... Attained ITF ranking as high as No. 161 ... Kazakhstani national champion in singles and doubles in 2018.

ASTAKHOVA'S CAREER RESULTS

SINGLES

DOUBLES

Year	Overall	Dual	SEC	No. 1	No. 2	No. 3	No. 4	No. 5	No. 6	Overall	Dual	SEC	No. 1	No. 2	No. 3
2020-21	2-6	2-6	2-4	--	--	--	--	--	2-6	5-6	5-6	4-3	--	0-1	5-5
2021-22	8-9	2-1	--	--	--	--	--	--	2-1	8-7	2-0	--	--	--	2-0
2022-23	7-9	--	--	--	--	--	--	--	--	3-2	1-0	--	--	--	1-0
Career	17-24	4-7	2-4	--	--	--	--	--	4-7	16-15	8-6	4-3	--	0-1	8-5



DJ BENNETT

FR- BELLVIEW, FL

SEC All-Freshman Team (2023)
SEC Freshman of the Week (3/29/23)

As a Freshman

Spring 2023: Became sixth Auburn player to be named to SEC All-Freshman team ... won SEC Freshman of the Week honors on 3/29/23 ... recorded a 21-9 singles record (18-7 in dual matches) playing at No. 3 and No. 4 ... Picked up six ranked singles victories ... Highest ranked singles victory of the spring game against No. 88 Isabella Pfenning of Miami during NCAA Second Round ... Earned match-clinching victory against FIU in NCAA First Round ... Recorded 18-8 overall doubles record ... Posted 14-6 dual match record alongside partner Kaitlyn Carnicella ... Went 9-2 in singles and 7-0 in doubles during conference matches ... Finished the season with nine consecutive singles match victories

Fall 2022: Posted a 3-2 singles record and a 3-0 doubles record in the fall ... claimed one singles victory over ranked opponent Jayci Goldsmith of Texas A&M ... was ranked 78th in singles at the end of the fall

Prior to Auburn

Won the 2022 Florida individual state championship in her senior season

Personal

Full name is Delaney Jade Bennett ... Native of Bellview, Florida ... Parents are Steven and Beth Bennett ... graduated Florida Virtual School with a 4.0 GPA ... Majoring in pre-Business ... was a gymnast in high school

BENNETT'S CAREER RESULTS

SINGLES

Year	Overall	Dual	SEC	No. 1	No. 2	No. 3	No. 4	No. 5	No. 6
2022-23	21-9	18-7	9-2	--	--	2-5	9-2	--	--
Career	21-9	18-7	9-2	--	--	2-5	9-2	--	--

DOUBLES

Overall	Dual	SEC	No. 1	No. 2	No. 3
18-8	14-6	7-0	--	0-4	14-2
18-8	14-6	7-0	--	0-4	14-2



KAITLYN CARNICELLA

FR- WHIPPANY, NJ

3x SEC Freshman of the Week (01/15/23, 02/01/23, 02/08/23)

As a Freshman

Spring 2023: Was named SEC Freshman of the Week three consecutive times ... Posted 20-16 overall singles record (9-19 dual record) ... Highest ranked victory came against No. 5 Abbey Forbes of North Carolina ... Went 25-12 overall in doubles (16-7 in dual matches) primarily with partner DJ Bennett ... Held an 8-1 doubles record in conference matches ... Reached ITA singles ranking of 95th

Fall 2022: Finished the fall with a 9-7 record in singles and a 8-3 record in doubles ... four singles victories came against SEC opponents from SEC schools ... won doubles flight at the 2022 Fall Ranked Spotlight alongside partner DJ Bennett

CARNICELLA'S CAREER RESULTS

SINGLES										DOUBLES					
Year	Overall	Dual	SEC	No. 1	No. 2	No. 3	No. 4	No. 5	No. 6	Overall	Dual	SEC	No. 1	No. 2	No. 3
2022-23	20-26	9-19	2-10	--	--	5-8	4-7	0-4	--	25-12	16-7	8-1	--	1-4	15-3
Career	20-26	9-19	2-10	--	--	5-8	4-7	0-4	--	25-12	16-7	8-1	--	1-4	15-3



ALI DESPAIN

GR- HILTON HEAD, SC

As a Graduate Student:

Spring 2023: Joined team in January 2023 ... Posted 7-3 overall singles record (3-2 in dual matches) ... Went 2-2 in doubles (2-1 in dual matches)

Prior to Auburn: Spent three seasons with the Clemson University women's tennis team ... reached a career high ITA ranking of 84th in singles and 17th in doubles during the 2021-22 season ... had a 18-9 doubles record and an NCAA Tournament doubles appearance in 2022 ... was named team captain for the 2021-22 season ... was elected the student-athlete advisory board president in 2022 ... was the 22nd ranked recruit in the nation for the class of 2019 in high school ... was a two-time South Carolina state champion in high school

DESPAIN'S CAREER RESULTS

SINGLES

Year	Overall	Dual	SEC	No. 1	No. 2	No. 3	No. 4	No. 5	No. 6
*2019-20	22-8	12-5	--	--	1-0	7-0	3-4	1-1	--
*2020-21	5-7	5-7	--	--	--	--	1-4	4-2	0-1
*2021-22	12-19	6-17	--	--	--	--	3-6	3-10	0-1
2022-23	7-3	3-2	--	--	--	--	--	--	3-2
Career	46-37	26-31	--	--	1-0	7-0	7-14	8-13	3-4

DOUBLES

Year	Overall	Dual	SEC	No. 1	No. 2	No. 3
*2019-20	13-11	9-5	--	--	2-0	7-5
*2020-21	10-4	10-4	--	1-0	6-2	3-2
*2021-22	18-9	13-5	--	4-2	6-2	3-1
2022-23	2-2	2-1	--	--	--	2-1
Career	43-26	34-15	--	5-2	14-4	15-9



ADELINE FLACH

JR- ALPHARETTA, GA

SEC Academic Honor Roll (2021, 2022)

SEC Freshman of the Week (March 31, 2021)

As a Junior

Spring 2023: Posted a 21-21 overall singles record (13-11 in dual matches) mostly at No. 6 ... Highest ranked singles win came over No. 110 Nadini Sharma of UCF ... Clinched match win in NCAA Second Round over Miami's Maya Tahan 6-3, 2-6, 6-4 ... Went 19-13 overall in doubles (12-9 in dual matches) mostly playing with partner Angella Okutoyi at No. 2 ... Highest ranked doubles victory came against No. 39 Meg Kowalski and Mell Reasco of Georgia ... Reached ITA doubles ranking of 64th alongside partner Angella Okutoyi

Fall 2022: Went 6-9 in singles and 6-3 in doubles during the fall ... Claimed one ranked doubles victory with partner Anastasia Astakhova over 15th ranked Nell Miller/Amelia Rajecki of NC State ... finished fall ranked 33rd in doubles alongside partner Anastasia Astakhova

As a Sophomore

Spring 2022: Went 16-21 in singles and 21-14 in doubles ... In dual matches, was 10-15 in singles and 11-8 in doubles ... Played most of the season at the No. 4 singles spot ... Had a six-match winning streak early in the season in singles ... Provided the clinching win in a 4-3 victory over Arizona State at the ITA Kickoff in Orlando, defeating Argyrokastriti 4-6, 7-6 (3), 6-4 ... Also had the clinching point in Auburn's victory over Vanderbilt with a 7-6 (3), 6-2 win over Marcella Cruz ... Earned an NCAA Tournament win with a 6-1, 6-2 victory over Natalya Ogunwale of Jackson State ... Along with partner Georgie Axon, secured the clinching win in doubles seven times ... Picked up one ranked win in doubles, helping clinch the point in the NCAA Super Regional at Texas with a 6-2 win over No. 67 Chavatipon and Collins ... Also clinched doubles points against UAB, Clemson, Alabama A&M, Washington, Tulane, Alabama and Florida ... Named to SEC Academic Honor Roll.

Fall 2021: Played in four fall tournaments ... Went 5-4 in singles and 7-6 in doubles ... Ranked No. 19 in doubles with Axon in the fall ... Qualified for ITA All-American Championship ... Lost in first round to No. 8 Killingsworth/Brylin of Wake Forest, but fought their way to the consolation final ... Defeated No. 2 Beck/Berankova of Duke 6-1, 7-6 (4) and No. 11 Pachkaleva/Fukuda of Pepperdine 6-4, 6-3 in the consolation bracket ... Dropped a third-set tiebreaker

PLAYER BIOS

in the consolation final to Bridges/Babic of LSU, 6-4, 1-6, 0-1 (7) ... In singles, advanced to the round of 16 at ITA Southern Regional ... Went 2-1 at the ASU Thunderbird Invitational.

As a Freshman

Spring 2021: Finished first collegiate season ranked No. 76 nationally in doubles along with Georgie Axon ... Went 12-8 in singles and 11-9 in doubles during the spring dual match season ... In SEC play, was 5-5 in singles and 6-5 in doubles, playing at the No. 5 and 6 singles spots and splitting time between No. 1 and 2 doubles ... Played all doubles matches with Axon ... Provided clinching point in Auburn's NCAA First Round win over Oklahoma State with 6-4, 7-6 (3) win over Lenka Stara at No. 5 singles ... Earned the clinching point in back-to-back wins at Arkansas and Missouri and was named SEC Freshman of the Week (3/31) for her efforts ... Defeated Arkansas' Lauren Alter 7-6 (4), 6-3, and downed Mizzou's Elys Ventura, 7-5, 6-4 ... In all, provided clinching singles win in six of Auburn's 14 wins on the season ... Won her first three matches and five of her first six in the spring season ... Along with Axon, picked up Auburn's biggest doubles win of the season as they defeated No. 3-ranked Jokic/Arseneault of Georgia, 6-2 ... Clinched doubles point in tiebreaker in NCAA First Round match against Oklahoma State, 7-6 (5) ... Picked up one other ranked doubles win, defeating 73rd-ranked Corley/Bridges of LSU, 6-2, to clinch the doubles point in that match ... Also clinched doubles point against Samford and Mississippi State ... Named to SEC First-Year Academic Honor Roll.

Fall 2020: Played in two fall tournaments, going 3-3 in singles and 4-2 in doubles ... Posted a 3-0 doubles record with Axon at SEC Challenge in Tuscaloosa ... Won two of three matches in singles at June Stewart Invitational in Nashville.

Prior to Auburn:

Ranked No. 52 in the class of 2020 and a five-star recruit by TennisRecruiting.net ... Attended Rivers Academy ... Gained valuable international experience competing on the European ITF circuit for a year ... Coached by Edina Gallovits-Hall, who attained a WTA ranking as high as 54.

Personal:

Native of Alpharetta, Ga. ... Parents are Doug and Katie Flach ... Her father, Doug Flach, was an All-American at Tennessee and competed professionally on the ATP tour, earning a top ranking of 108 in singles and 50 in doubles.

FLACH'S CAREER RESULTS

SINGLES

Year	Overall	Dual	SEC	No. 1	No. 2	No. 3	No. 4	No. 5	No. 6
2020-21	15-11	12-8	5-5	--	--	--	--	5-6	7-2
2021-22	16-21	10-15	3-10	--	1-0	1-1	7-10	0-3	1-1
2022-23	21-21	13-11	5-6	--	--	--	--	2-1	11-10
Career	52-53	35-34	13-21	--	1-0	1-1	7-10	7-10	19-13

DOUBLES

Year	Overall	Dual	SEC	No. 1	No. 2	No. 3
2020-21	15-11	11-9	6-5	3-5	8-4	--
2021-22	21-14	11-8	5-3	1-0	10-8	--
2022-23	19-13	12-9	5-5	--	11-8	1-1
Career	55-38	34-26	16-13	4-5	29-20	1-1



ANGELLA OKUTOYI

FR- NAIROBI, KENYA

As a Freshman

Spring 2023: Joined team in January 2023 ... Posted 15-12 overall singles record (15-10 in dual matches) playing mostly at No. 5 ... Highest ranked singles win came against No. 51 Kailey Evans of San Diego ... Went 13-9 overall in doubles (11-9 in dual matches) mostly playing with partner Adeline Flach at No. 2 ... Highest ranked doubles victory came against No. 39 Meg Kowalski and Mell Reasco of Georgia ... Reached ITA doubles ranking of 64th alongside partner Adeline Flach

Prior to Auburn: Held an ITF junior ranking of 49th ... claims six ITF junior singles titles and 13 doubles titles ... winner of the 2022 Junior Wimbledon Doubles Championship ... two time African junior champion ... became first Kenyan to win a match at a junior girls' Grand Slam event at the 2022 Australian Open ... was ranked as the best junior player in the continent of Africa

Personal: Mother is Mary ... has a sister, Roselinda ... hometown is Nairobi, Kenya

OKUTOYI'S CAREER RESULTS

SINGLES

Year	Overall	Dual	SEC	No. 1	No. 2	No. 3	No. 4	No. 5	No. 6
2022-23	15-12	15-10	8-5	--	--	--	4-2	11-8	--
Career	15-12	15-10	8-5	--	--	--	4-2	11-8	--

DOUBLES

Year	Overall	Dual	SEC	No. 1	No. 2	No. 3
2022-23	13-9	11-9	5-5	--	10-8	1-1
Career	13-9	11-9	5-5	--	10-8	1-1



SELIN OYUNC

SR- ANKARA, TURKEY

- All-SEC First Team (2022)**
- SEC Player of the Week (April 13, 2022)**
- NCAA Singles Selection (2022)**
- ITA All-American (2021)**
- All-SEC Second Team (2021)**
- SEC All-Newcomer Team (2021)**
- NCAA Singles Championship Round of 16 (2021)**
- NCAA Doubles Championship Selection (2021, 2022)**
- ITA Southern Regional Rookie of the Year (2020)**
- SEC Academic Honor Roll (2022)**

As a Junior

Spring 2022: Ranked No. 41 in the final national singles rankings; was ranked as high as No. 34 during the spring season ... Finished at No. 12 overall in doubles along with Ariana Arseneault; climbed as high as No. 9 ... Went 15-18 overall in singles, 21-12 in doubles ... In dual matches, was 10-13 in singles, 15-7 in doubles ... Posted a 7-6 singles record and 9-1 doubles mark in SEC play ... Played entire spring season at No. 1 singles position ... Earned eight ranked wins in the spring ... Best weekend of the season came in matches at South Carolina and Florida ... Defeated No. 2 Sarah Hamner of SC, 7-5, 6-4, then clinched the Tigers' first-ever win at Florida with a 6-4, 7-5 win over No. 15 McCartney Kessler ... For her efforts that weekend, she was named SEC Player of the Week ... Along with a prior win over No. 70 Safiya Carrington of LSU, made it four straight ranked wins with a 1-6, 7-5, 6-2 win over No. 30 Rebeka Mertena of Tennessee ... Had another win over No. 2 Hamner early in the season, a 6-4, 6-7, 7-5 win at the Carolina Kickoff ... Other ranked wins: No. 75 Anna Campana (Wake Forest), 6-1, 4-6, 6-4 ... No. 70 Cristina Mayorova (Clemson), 6-3, 6-0 ... No. 94 Emma Antonaki (Mississippi State), 7-5, 2-6, 7-5 ... Clinched the Tigers' win over Missouri with a 4-6, 7-5, 6-0 win over Bronte Murgett ... In doubles, teamed with Arseneault to defeat nation's No. 2 team twice ... Defeated No. 2 Killingsworth/Brylin of Wake Forest 6-3 at Carolina Kickoff ... Earned 6-3 win over No. 2 Goldsmith/Makarova of Texas A&M ... Back-to-back wins over top-20 opponents, defeating No. 17 Kuczer/McGiffin (Tennessee), 6-1, then taking down No. 16 Coppoc/Hertel (Georgia), 6-3, two days later ... Clinched doubles point in six matches ... Named to All-SEC First Team ... No. 1 in final regional singles rankings ... No. 1 in regional doubles rankings ... SEC Academic Honor Roll.

Fall 2021: Played in three fall tournaments ... Went 3-5 in singles and 4-4 in doubles ... Qualified for ITA All-American Championships main draw ... Went 2-1 in singles and 3-0 in doubles at ASU Thunderbird Invitational.

As a Sophomore

Spring 2021: Named the seventh All-American in Auburn women's tennis history - the second in singles - after advancing to the round of 16 at the NCAA Singles Championship ... Ranked No. 50 in singles in the final ITA rankings; finished at No. 23 in doubles along with Taylor Russo ... Recorded an 8-9 mark in singles in dual matches; 10-10 overall in the spring ... Was 11-9 in doubles ... Played all singles matches at the No. 1 spot and split time in doubles between No. 1 and 2 ... Became the second Auburn player in history to advance past the second round of the NCAA Singles Championship ... Earned highest-ranked win of her career in first round, defeating No. 5 Kenya Jones of Georgia Tech, 7-5, 6-3 ... Made it a second straight ranked win a day later with a 3-6, 7-5, 6-2 win over Missouri's Bronte Murgett in the round of 32 ... Saw her postseason run come to an end with a 4-6, 0-6 loss to No. 60 Paris Corley of LSU ... Had two other ranked singles wins in the spring season ... Defeated No. 50 Taylor Bridges of LSU 7-5, 6-1 ... Avenged an earlier loss to No. 35 Indiana Spink of Arkansas with a 7-6 (4), 6-4 win in the SEC Tournament to clinch the team win for Auburn ... Provided the clinching point in the Tigers' win over Alabama with a 4-6, 6-3, 6-1 win over Moka Ito ... Clinched the doubles point for Auburn in five matches ... Gave the Tigers an early lead at Georgia with a 7-6 (5) win over UGA's Christofi/Coppoc alongside Carolyn Ansari ... Also teamed with Ansari for the clinching point against Arkansas in the SEC Tournament with a 6-3 win over Alter/Spink ... Earned two ranked doubles wins with Taylor Russo ... Defeated Furman's 27th-ranked Kazarov/Adams 6-4 in the season-opener to clinch the doubles point in a 4-3 win ... Earned a 6-3 win over 29th-ranked Horvit/Davies of South Carolina ... Ranked as high as No. 10 in doubles with Russo during the season ... Selected to NCAA Doubles Championship with Russo ... Named to All-SEC Second Team and SEC All-Newcomer Team ... Ranked No. 4 in singles in final ITA Southern Regional rankings ... Along with Russo, ranked No. 1 in doubles in the region.

Fall 2020: Played in two fall tournaments ... Went 5-1 in singles and 2-4 in doubles ... Won her first five singles matches, going 3-0 at the Music City Scramble and 2-1 at the June Stewart Invitational.

As a Freshman

Spring 2020: Named ITA Southern Regional Rookie of the Year ... Went 9-2 in singles in dual match play, including a 3-1 mark in SEC play ... Was 8-4 in doubles and 2-2 in SEC play with Taylor Russo ... Ranked as high as No. 9 nationally with Russo in doubles ... Ranked No. 14 in final published ITA doubles ranking when season was suspended ... Helped clinch doubles point vs. South Carolina with 6-3 win at No. 1 spot over 56th-ranked Mia Horvit/Megan Davies ... Clinched doubles point in Auburn win over Kentucky with 6-3 win at top spot ... Moved into ITA singles rankings at No. 64 in last published ranking of season ... Defeated two ranked opponents to open SEC play at second singles spot, earning SEC Freshman of the Week honors ... Downed 20th-ranked Megan Davies of South Carolina, 5-7, 6-3, 6-3 ... Came back two days later and defeated Florida's 113th-ranked Victoria Emma 6-3, 6-3 ... Did not lose a singles match to an unranked opponent.

Fall 2019: Posted a 13-5 record in singles and 11-4 mark in doubles in fall tournament season ... Teamed with Taylor Russo to win ITA Southern Regional doubles title ... Defeated LSU's Eden Richardson and Nina Geissler on their home court 6-3, 6-2, to win the tournament championship, earning a bid to ITA Fall Nationals ... Won two doubles matches at ITA Fall Nationals in consolation bracket ... Defeated 14th-ranked team of Adaloglou and Racine of Mississippi State in ITA Southern Regional quarterfinal ... Advanced to singles final at Marliiss Gruver Invite in first collegiate event ... Won two matches at ITA All-American Pre-Qualifying ... Played singles at ITA Fall Nationals, earning first collegiate win over ranked opponent with 4-6, 6-4, 6-4 victory over No. 89 Kaitlin Staines of Tennessee ... Advanced to singles semifinals at ITA Southern Regional ... Went 3-0 at Orlando Invitational.

Prior to Auburn

Ranked No. 79 internationally among junior girls by the ITF ... No. 1-ranked player in Turkey ... Competed in the Junior Championships at Wimbledon in July ... Competed in the main draw at the Roland Garros Junior French Championships ... Won the DKS ITF Juniors singles main draw title in January in Kolkata, India ... Has a UTR of 11.

OVUNC'S CAREER RESULTS

SINGLES

Year	Overall	Dual	SEC	No. 1	No. 2	No. 3	No. 4	No. 5	No. 6
2019-20	22-7	9-2	3-1	--	7-1	2-1	--	--	--
2020-21	15-11	8-9	4-7	8-9	--	--	--	--	--
2021-22	15-18	10-13	7-6	10-13	--	--	--	--	--
2022-23									
Career	52-36	27-24	14-14	18-22	7-1	2-1	--	--	--

DOUBLES

Overall	Dual	SEC	No. 1	No. 2	No. 3
19-8	8-4	2-2	8-4	--	--
13-13	11-9	5-7	7-5	4-3	0-1
21-12	15-7	9-1	13-7	2-0	--
53-33	34-20	16-10	28-16	6-3	0-1

YARBROUGH TENNIS CENTER



In 2005, Auburn University set out to make its men’s and women’s tennis teams the best programs in the country, starting with a state-of-the-art facility. In August 2006, construction began on Auburn’s new facility. On Nov. 2 2007, the City of Auburn/Auburn University Yarbrough Tennis Center opened as a new phase in Auburn tennis.

The facility has 33,314-square feet of indoor space with six indoor courts, 12 outdoor courts with stadium seating and 16 clay courts. The Yarbrough Tennis Center also houses a pro shop, men’s and women’s locker rooms, concessions and a meeting area. All 12 courts are world-class lighted courts used for both competition and practice by the Auburn tennis teams.

“This outstanding facility is the result of the hard work and dedication of numerous people from the City of Auburn and Auburn University,” said Auburn athletics director Jay Jacobs. “One of the finest tennis facilities in the Southeastern Conference, the Yarbrough Center will be a tremendous asset for the men’s and women’s tennis programs at Auburn for years to come.”

As one of the best facilities in the Southeastern Conference, Auburn hosted the 2008 SEC women’s tennis championships and the men’s tournament in 2009. The facility was named the 2015 Public Facility of the Year by the Professional Tennis Registry.

The City of Auburn/Auburn University Tennis Center replaced the Luther Young Tennis Complex, Auburn’s tennis home since 1978.

QUICK FACTS

Name	Yarbrough Tennis Center
Year Opened	2008
Indoor Facility	33,314 sq. feet
Courts	6 Indoor 12 Outdoor 16 Clay Courts

2022-23 INDIVIDUAL STATISTICS

SINGLES RESULTS

Player	#1	#2	#3	#4	#5	#6	Dual	Tourn.	SEC	All
Carolyn Ansari	0-5	14-7	--	--	--	--	14-12	2-1	5-7	21-16
Ariana Arseneault	11-10	5-1	--	--	--	--	16-11	2-1	7-6	23-17
Anastasia Astakhova	--	--	--	--	--	--	--	--	--	7-9
DJ Bennett	--	--	9-5	9-2	--	--	18-7	--	9-2	21-9
Kaitlyn Carnicella	--	--	5-8	4-7	0-4	--	9-19	--	2-10	20-26
Ali DeSpain	--	--	--	--	--	3-2	3-2	--	1-2	3-3
Adeline Flach	--	--	--	--	2-1	11-10	13-11	--	3-3	21-21
Selin Ovunc	--	--	--	--	--	--	--	--	--	0-0
Angella Okutoyi	--	--	--	4-2	11-8	--	15-10	--	8-5	15-12
Totals	11-15	19-8	14-13	17-11	13-13	14-12	88-72	4-2	37-38	131-113

DOUBLES RESULTS

Players	#1	#2	#3	Dual	Tourn.	SEC	All
Ansari/Arseneault	11-13	-	-	11-13	0-1	5-6	16-12
Ansari/Carnicella	-	-	-	-	-	-	0-1
Ansari/DeSpain	-	-	-	-	-	-	0-1
Arseneault/Okutoyi	-	-	-	-	-	-	2-0
Astakhova/Flach	-	-	-	-	-	-	1-1
Astakhova/Carnicella	-	-	-	-	-	-	0-1
Astakhova/DeSpain	-	-	1-0	1-0	-	-	1-0
Bennett/Carnicella	-	0-4	14-2	14-6	-	7-0	14-6
Bennett/Flach	-	-	-	-	-	-	0-1
Carnicella/DeSpain	-	-	0-1	0-1	-	0-1	0-1
Carnicella/Flach	-	1-0	-	-	-	-	7-2
Flach/Okutoyi	-	10-8	1-1	11-9	-	5-5	11-9
Totals	11-13	11-12	17-4	39-29	0-1	18-12	52-35



Single Season Records

Combined Victories

Player	No.	Year
1. Alizee Michaud	58.....	2017
2. Kim Brannon	57.....	1989
3. Anna Funderburk.....	56.....	1993
4. Alex Haney	55.....	2009
T5. Pleun Burgmans.....	54.....	2016
T5. Alex Haney	54.....	2008
T7. Taylor Russo	53.....	2017
T7. Melissa Koning	53.....	2008
T7. Nadia Smirnova.....	53.....	1993
T7. Alannah Griffin	53.....	2016
T7. Jackie Kasler	53.....	2013
12. Alex Haney.....	51.....	2008
13. Carolyn Ansari.....	52.....	2022
T14. Ariana Arseneault	50.....	2022

Singles Victories

Player	No.	Year
1. Kim Brannon	35.....	1989
2. Fani Chifchieva.....	34.....	2008
3. Alizee Michaud	33.....	2017
4. Alex Haney	30.....	2009
T5. Carolyn Ansari.....	29.....	2022
T5. Ariana Arseneault.....	29.....	2022
T5. Yu Chen	29.....	2022
T5. Pleun Burgmans.....	29.....	2016
T9. Georgie Axon	28.....	2022
T9. Alannah Griffin	28.....	2016
T9. Fani Chifchieva	28.....	2007
T9. Ali LaGrange	28.....	1996
T9. Anna Funderburk	28.....	1993
14. Alex Haney	27.....	2007

Doubles Victories

Player	No.	Year
T1: Taylor Russo	29.....	2017
T1. Pleun Burgmans.....	29.....	2015
T1. Jen Pfeifler.....	29.....	2013
T1. Jackie Kasler	29.....	2013
T1. Melissa Koning	29.....	2008
T6. Emily Flickinger	28.....	2015
T6. Emily Flickinger	28.....	2014
T6. Pleun Burgmans.....	28.....	2014
T6. Alex Haney	28.....	2008
T6. Anna Funderburk	28.....	1993
T6. Nadia Smirnova.....	28.....	1993
T12. Pleun Burgmans	26.....	2016
T12. Alizee Michaud	26.....	2016
T12. Pleun Burgmans	26.....	2013
T12. Petra Bercik.....	26.....	2002

Career Records

Combined Victories

Player	No.	Years
1. Alex Haney	197.....	2005-09
2. Pleun Burgmans	195.....	2012-16
3. Georgie Axon.....	188.....	2016-22
4. Fani Chifchieva.....	180.....	2006-10
5. Kim Brannon	179.....	1986-89
6. Taylor Russo	175.....	2016-21
7. Emily Flickinger.....	166.....	2012-15
8. Anna Funderburk.....	162.....	1989-92
9. Jackie Kasler.....	157.....	2011-14
T10. Carolyn Ansari	143	2019-present
T10. Jen Pfeifler	143.....	2012-15
T11. Whitney Chappell	141.....	2005-09
T11. Carolina Ramirez	141.....	2000-04
13. Alizee Michaud.....	131.....	2015-18
14. Sue Watt.....	126.....	1986-89

Singles Victories

Player	No.	Years
1. Fani Chifchieva.....	109.....	2007-10
2. Georgie Axon.....	107.....	2016-22
3. Alex Haney	104.....	2006-09
4. Anna Funderburk.....	95.....	1989-92
5. Kim Brannon	94.....	1986-89
6. Pleun Burgmans	88.....	2012-16
7. Taylor Russo	85.....	2016-21
T8. Carolyn Ansari.....	78	2019-present
T8. Andie Dikosavljevic.....	78.....	2014-18
9. Kimberley Kozlowski.....	75.....	1993-96
T10. Jackie Kasler	74.....	2010-14
T10. Sue Watt	74.....	1986-89
12. Yu Chen	73.....	2019-22
T13. Whitney Chappell	70.....	2006-09
T13. Sharon Mieres.....	70.....	1994-97

Doubles Victories

Player	No.	Years
1. Pleun Burgmans	107.....	2012-16
2. Emily Flickinger.....	99.....	2012-15
3. Alex Haney	93.....	2006-09
4. Taylor Russo	90.....	2016-21
5. Kim Brannon	85.....	1986-89
6. Jackie Kasler.....	83.....	2010-14
7. Jen Pfeifler	82.....	2011-15
8. Georgie Axon.....	81.....	2016-22
9. Carolina Ramirez	79.....	2000-04
T10. Fani Chifcheiva.....	71.....	2006-10
T10. Whitney Chappell	71.....	2006-09
T10. Petra Bercik.....	71.....	2001-05
13. Madeline Meredith	70.....	2017-22
13. Anna Funderburk	67.....	1989-92

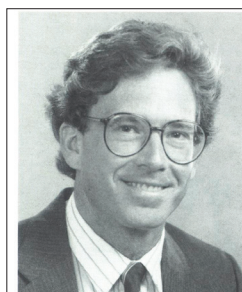
HEAD COACHING RECORDS



Pat Gilliam
1978-1984



Susie Fain
1985-1986



Randy Holden
1991-1997



Troy Porco
1998-2005



Tim Gray
2006-2011



Lauren Spencer
2012-2019



Caroline Lilley
2020-present

YEARS	COACH	YRS.	W	L	PCT.
1978-1979	Betty Brown	2	31	21	.596
1980-1984	Pat Gilliam	5	67	53	.558
1985-1986	Susie Fain	2	34	35	.493
1987	Al Parks	1	20	7	.741
1988-1990	Ross Boling	2	44	31	.587
1991-1997	Randy Holden	7	69	84	.451
1998-2005	Troy Porco	8	65	110	.371
2006-2011	Tim Gray	6	62	80	.437
2012-2019	Lauren Spencer	8	143	92	.609
2020-present	Caroline Lilley	3	64	30	.681

IN THE LILLEY ERA

- 2 NCAA Super Regional Appearances (2022, 2023)
- 3 NCAA Tournament Appearances (2021, 2022, 2023)
- 3 ITA Singles All-Americans (Carolyn Ansari, Ariana Arseneault, Selin Ovunc)
- 4 First Team All-SEC Selections (Carolyn Ansari x2, Ariana Arseneault, Selin Ovunc)
- 3 Second Team All-SEC Selections (Carolyn Ansari, Ariana Arseneault, Selin Ovunc)
- 1 SEC-All Freshman Team Selection (DJ Bennett)



ALL-AMERICANS



Fani Chifchieva
2007, 2008, 2009



Alex Haney
2008



Melissa Koning
2008



Pleun Burgmans
2014, 2015, 2016



Emily Flickinger
2014, 2015



Alizee Michaud
2016



Selin Ovunc
2021, 2022



Ariana Arseneault
2022, 2023



Carolyn Ansari
2023

ALL-SEC

1982
Andrea Bobby (First Team)

1984
Manisha Perera (First Team)

1993
Anna Funderburk (Second Team)
Nadia Smirnova (Second Team)

1994
Sharon Mieres (Second Team)
Nadia Smirnova (Second Team)

2002
Petra Bercik (Second Team)
Carolina Ramirez (Second Team)

2007
Fani Chifchieva (First Team)
Alex Haney

2008
Fani Chifchieva (First Team)
Alex Haney (First Team)

2009
Fani Chifchieva (First Team)
Alex Haney (First Team)

2010
Fani Chifchieva (First Team)

2013
Pleun Burgmans (First Team & Freshman)

2014
Pleun Burgmans (First Team)
Emily Flickinger (Second Team)

2015
Pleun Burgmans (Second Team)

2016
Andie Dikosavljevic (First Team)
Alizee Michaud (First Team)
Pleun Burgmans (Second Team)
Alannah Griffin (Freshman)

2017
Alizee Michaud (First Team)
Andie Dikosavljevic (Second Team)
Taylor Russo (Freshman)

2018
Jaeda Daniel (First Team & Freshman)
Alizee Michaud (Second Team)

2021
Selin Ovunc (Second Team & Newcomer)
Carolyn Ansari (Second Team & Newcomer)

2022
Carolyn Ansari (First Team)
Ariana Arseneault (First Team)
Selin Ovunc (First Team)

2023
Carolyn Ansari (First Team)
Ariana Arseneault (Second Team)
DJ Bennett (Freshman)

NCAA TOURNAMENT TEAMS

YEAR	RESULT	OPPONENT	ROUND	SITE
1996	L, 0-5	Tennessee	1st	Columbia, S.C.
1999	L, 1-5	Arizona	1st	Gainesville, Fla.
2002	W, 4-3	Indiana	1st	Nashville, Tenn.
	L, 0-4	Vanderbilt	2nd	Nashville, Tenn.
2007	W, 4-3	North Carolina State	1st	Athens, Ga.
	L, 0-4	Georgia	2nd	Athens, Ga.
2008	W, 4-3	Ohio State	1st	Gainesville, Fla.
	L, 0-4	Florida	2nd	Gainesville, Fla.
2009	L, 0-4	Florida State	1st	Gainesville, Fla.
2013	W, 4-2	St. Mary's	1st	Berkeley, Calif.
	L, 0-4	California	2nd	Berkeley, Calif.
2014	W, 4-1	Winthrop	1st	Clemson, S.C.
	L, 5-0	Clemson	2nd	Clemson, S.C.
2015	L, 4-2	Pepperdine	1st	Stanford, Calif.
2016	W, 4-0	Alcorn State	1st	Auburn, Ala.
	W, 4-2	Arizona State	2nd	Auburn, Ala.
	L, 4-0	Vanderbilt	R16	Tulsa, Okla.
2017	W, 4-0	DePaul	1st	Auburn, Ala.
	W, 4-2	Florida State	2nd	Auburn, Ala.
	L, 2-4	Texas Tech	R16	Athens, Ga.
2018	L, 3-4	Winthrop	1st	Atlanta, Ga.
2021	W, 4-2	Oklahoma State	1st	Tallahassee, Fla.
	L, 1-4	Florida State	2nd	Tallahassee, Fla.
2022	W, 5-0	Jackson State	1st	Auburn, Ala.
	W, 4-3	Georgia Tech	2nd	Auburn, Ala.
	L, 1-4	Texas	SR	Austin, Texas
2023	W, 4-3	FIU	1st	Coral Gables, FL
	W, 4-3	Miami	2nd	Coral Gables, FL
	L, 4-0	NC State	SR	Raleigh, NC

NCAA CHAMPIONSHIPS PARTICIPANTS

1982 Andrea Bobby/Gigi Acker (Doubles)	2010 Fani Chifchieva (Singles)	2018 Jaeda Daniel (Singles)
1993 Anna Funderburk/Nadia Smirnova (Doubles)	2013 Pleun Burgmans (Singles) Pleun Burgmans/Plamena Kurteva (Doubles)	2021 Selin Ovunc (Singles) Selin Ovunc/Taylor Russo (Doubles)
2002 Carolina Maurer/Katia Illarionova (Doubles)	2014 Pleun Burgmans/Emily Flickinger (Doubles)	2022 Selin Ovunc (Singles) Selin Ovunc/Ariana Arseneault (Doubles)
2007 Fani Chifchieva (Singles) Alex Haney/Melissa Koning (Doubles)	2015 Pleun Burgmans/Emily Flickinger (Doubles)	2023 Carolyn Ansari (Singles) Ariana Arseneault (Singles) Carolyn Ansari/Ariana Arseneault (Doubles)
2008 Fani Chifchieva (Singles) Alex Haney/Melissa Koning (Doubles)	2016 Andie Dikosavljevic (Singles) Pleun Burgmans/Alizee Michaud (Doubles)	
2009 Fani Chifchieva (Singles) Whitney Chappell/Alex Haney (Doubles)	2017 Alizee Michaud/Taylor Russo (Doubles)	

ALL-TIME RECORD VS. OPPONENTS

Abilene Christian	0-1	Iowa State	1-0	South Carolina	11-31
Alabama	24-33	Jackson State	3-0	South Florida	4-12
Alabama A&M	15-0	Jacksonville State	3-0	Southern	2-0
Alabama State	2-0	Kansas	1-2	Southern Illinois	4-0
Alabama-Christian	1-0	Kansas State	0-2	Southern Mississippi	9-0
Alcorn State	1-0	Kennesaw State	1-0	SMU	1-3
Appalachian State	1-0	Kentucky	17-26	Stephen F. Austin	1-0
Arizona	1-1	Lamar	1-1	Stetson	2-0
Arizona State	2-0	LSU	17-29	TCU	2-2
Arkansas	28-23	Louisiana-Lafayette	3-1	Tennessee	13-37
Auburn-Montgomery	1-0	ULM	7-2	UT-Martin	2-0
Baylor	4-0	Louisiana Tech	1-0	UT-Chattanooga	4-3
Belmont	1-0	Louisville	2-1	Texas	0-2
Birmingham Southern	2-0	Marshall	2-0	Texas A&M	2-12
Boston University	1-0	Maryland	1-0	Texas-San Antonio	2-0
Bowling Green	1-0	Memphis	7-0	Texas State	1-0
BYU	0-1	Mercer	16-0	Texas Tech	5-2
California	0-1	Miami (Fla.)	5-9	Toledo	1-0
Cal State Santa Barbara	1-1	Miami (Ohio)	1-1	Troy	16-1
Cal State San Diego	1-0	Michigan	2-1	Tulane	10-1
Cal State Northridge	1-0	Michigan State	5-1	Tulsa	0-1
Central Arkansas	2-0	Middle Tennessee	5-3	Utah	0-2
UCF	4-0	Minnesota	2-2	UAB	31-2
Charlotte	2-0	Mississippi State	33-17	UCSB	1-0
Cincinnati	1-0	Mississippi University for Women	5-0	UNLV	3-1
Clemson	4-10	Missouri	11-0	USC	1-1
Colorado	1-0	Missouri State	1-0	Vanderbilt	18-34
Columbia	1-0	Murray State	1-0	Virginia	1-0
Columbus State	4-0	New Mexico	2-0	Virginia Tech	1-1
Cornell	1-0	Nicholls State	1-0	Wake Forest	0-2
Denver	2-0	North Carolina	2-8	Washington	2-0
DePaul	3-2	North Carolina State	2-3	Washington State	1-0
Duke	0-6	North Florida	9-1	Winthrop	0-1
Eastern Michigan	1-0	Northwestern State	1-0	Wyoming	2-0
Flagler	3-0	Notre Dame	1-1	Wake Forest	2-4
Florida	2-45	Ohio State	4-7	West Florida	2-0
Florida A&M	7-0	Oklahoma	1-0	Western Illinois	1-0
FIU	2-2	Oklahoma State	2-2	Western Michigan	1-0
Florida Southern	2-0	Ole Miss	20-30	William & Mary	1-0
Florida State	2-22	Pacific	1-0	Winthrop	0-1
Fresno State	2-0	Pensacola	1-0	Yale	1-1
Furman	11-0	Pepperdine	1-3		
Georgetown	1-0	Princeton	0-1		
Georgia	9-57	Purdue	1-1		
Georgia Southern	7-0	Rice	1-1		
Georgia State	11-0	Roane State	1-0		
Georgia Tech	13-16	Rollins	1-3		
Hawaii	1-0	Saint Mary's	1-0		
Houston	4-1	Samford	17-0		
Huntington	1-0	San Diego	1-0		
Indiana	2-2	San Diego State	0-1		
Illinois	1-1	SIU-Edwardsville	0-1		
Iowa	2-0	South Alabama	10-9		

YEAR-BY-YEAR RESULTS

1978

Overall: 22-9

SEC: N/A

Head Coach: Betty Brown

Date	Opponent	Result
	Georgia	W 7-2
	Georgia	W 6-3
	Georgia	W 5-2

No Other Records Available

1979

Overall: 9-12

SEC: 2-5

Head Coach: Betty Brown

Date	Opponent	Result
	Mississippi State	W 8-1
	Furman	W 9-0
	Duke	L 4-5
	North Carolina	L 1-8
	South Alabama	W 7-2
	Mississippi University for	
Women		W 9-0
	Tennessee-Chattanooga	W 6-3
	Florida State	L 2-7
	*Alabama	L 3-6
	Miami (Fla.)	L 0-9
	*LSU	L 0-5
	*Georgia	L 4-5
	South Alabama	W 6-3
	Pensacola Junior College	W 9-0
	Mississippi University for	
Women		W 9-0
	Florida State	L 2-7
	*Alabama	W 5-4
	*Georgia	L 2-5
	*Alabama	L 4-5
	*Georgia	L 2-7
	Florida State	L 4-5

*SEC Match

1980

Overall: 15-8

SEC: 3-1

Head Coach: Pat Gilliam

Date	Opponent	Result
	Ohio State	W 8-1
	*Mississippi State	W 9-0
	South Florida	L 1-8
	UAB	W 9-0
	South Alabama	W 7-2
	*Alabama	L 4-5
	Mississippi University for	
Women		W 9-0
	*Ole Miss	W 5-4
	*Georgia	W 9-0

SEC Championship: 6.25 points (7th)
(at Nashville, Tenn.)

*SEC Match

No Other Records Available

1981

Overall: 12-7

SEC: 4-2

Head Coach: Pat Gilliam

Date	Opponent	Result
	Memphis State	W 8-1
	Tulane	W 7-2
	*Vanderbilt	W 6-3
	Georgia State	W 9-0
	South Alabama	W 8-1
	Tennessee-Chattanooga	L 4-5
	*Alabama	L 4-5
	Miami (Fla.)	L 0-9
	Northeast Louisiana	L 1-6
	*Ole Miss	W 5-1
	*Mississippi State	W 9-0
	UAB	W 9-0
	*Alabama	L 1-8
	Mississippi University for	
Women		W 9-0
	Columbus College	W 9-0
	*Ole Miss	W 5-4
	Miami (Fla.)	L 0-9

SEC Championship: 9.75 points (7th)
(at Athens, Ga.)

*SEC Match

YEAR-BY-YEAR RESULTS

1982

Overall: 15-16

SEC: 2-5

Head Coach: Pat Gilliam

Date	Opponent	Result
	Lamar	W 6-3
	Houston	W 5-4
	South Florida	L 2-7
	*Vanderbilt	L 2-7
	Clemson	L 4-5
	*LSU	L 3-6
	Florida State	L 0-9
	Rollins	L 2-7
	North Carolina	L 1-8
	Mississippi University for Women	W 9-0
	South Florida	L 1-5
	Louisiana Tech	W 8-1
	Southern Illinois	W 9-0
	Northeast Louisiana	L 4-5
	Southern Methodist	L 1-8
	Northeast Louisiana	W 5-1
	Cal State Santa Barbara	W 5-4
	Murray State	W 8-1
	Southern Illinois	W 9-0
	*Alabama	W 5-4
	*Ole Miss	L 4-5
	*Florida	L 0-6
	UAB	W 7-1
	*Georgia	L 1-8
	*Kentucky	W 8-3
	South Alabama	W 5-4
	^vs. Kentucky	W 8-1
	^vs. Tennessee	L 1-8
	^vs. Alabama	L 3-6
	^vs. Vanderbilt	W 7-2

*SEC Match

^ SEC Tournament (Oxford, Miss.)

All-SEC Team

Andrea Bobby - 1st Team

NCAA Doubles Participants

Andrea Bobby/Gigi Acker - 1st Round

1983

Overall: 14-13

SEC: 5-3

Head Coach: Pat Gilliam

Date	Opponent	Result
	Tennessee-Chattanooga	W 7-2
	UAB	W 5-4
	Georgia Southern	W 8-1
	Arkansas	W 5-4
	Memphis State	W 8-1
	Vanderbilt	W 7-2
	Southern Methodist	L 2-7
	Florida State	L 3-6
	Texas Tech	W 6-3
	South Alabama	W 8-1
	Florida State	L 1-8
	*Mississippi State	W 5-4
	*Georgia	L 2-6
	*Florida	L 1-8
	*Ole Miss	W 2-7
	*Tennessee	L 2-7
	*Vanderbilt	W 7-2
	*Kentucky	W 6-3
	*LSU	W 6-3
	^vs. Ole Miss	L 4-5
	^vs. Vanderbilt	W 5-1
	^vs. LSU	L 3-6

*SEC Match

^ SEC Tournament (Tuscaloosa, Ala.)

1984

Overall: 11-9

SEC: 6-3

Head Coach: Pat Gilliam

Date	Opponent	Result
	UAB	W 7-2
	Tennessee-Chattanooga	L 1-8
	Tennessee	L 1-5
	Tennessee-Martin	W 5-3
	Arkansas	L 3-6
	Memphis State	W 9-0
	*Vanderbilt	W 6-3
	Georgia Tech	W 9-0
	Florida State	L 2-7
	*Tennessee	W 7-2
	Rollins	L 3-6
	South Florida	L 0-9
	Florida Southern	W 9-0
	*Florida	L 0-9
	*Mississippi State	W 7-2
	*Ole Miss	L 3-6
	*Kentucky	W 5-4
	*Georgia	L 1-8
	*LSU	W 6-3
	*Alabama	W 8-1

SEC Championship: 8 points (5th)
(at Gainesville, Fla.)

*SEC Match

All-SEC Team

Manisha Perera - 1st Team

1985

Overall: 17-22

SEC: 2-8

Head Coach: Susie Fain

Date	Opponent	Result
	Alabama Christian	W 9-0
	Columbus College	W 9-0
	*Ole Miss	L 3-6
	Memphis State	W 8-1
	Arkansas	L 4-5
	Tulane	L 2-7
	Georgia Tech	W 6-3
	West Florida	W 9-0
	Mississippi State	W 7-2
	Georgia Southern	W 8-1
	Rollins	L 4-5
	Flagler	W 8-1
	North Florida	L 3-6
	Appalachian State	W 9-0
	Wake Forest	L 4-5
	South Carolina	L 2-5
	*Kentucky	L 0-9
	*Tennessee	L 2-7
	*Vanderbilt	W 6-3
	Southern Mississippi	W 8-1
	Notre Dame	L 1-8
	Abilene Christian	L 4-5
	SIU-Edwardsville	L 4-5
	Stetson	W 7-2
	Florida Southern	W 5-4
	Stephen F. Austin	W 5-4
	Minnesota	L 4-5
	*Georgia	L 1-6
	Tennessee-Chattanooga	L 0-9
	South Alabama	L 3-6
	*Mississippi State	W 5-4
	Southwestern Louisiana	W 7-2
	*LSU	L 3-6
	South Alabama	L 2-7
	*Ole Miss	L 0-9
	Florida State	L 1-8
	UAB	W 7-2
	*Florida	L 0-9
	*Alabama	L 4-5

SEC Championship: 0 points (10th)
(at Auburn, Ala.)

*SEC Match

YEAR-BY-YEAR RESULTS

1986

Overall: 17-13

SEC: 3-6

Head Coach: Susie Fain

Date	Opponent	Result
	Georgia Tech	L 4-5
	Tulane	W 8-1
	Memphis State	W 9-0
	Arkansas	L 3-6
	Furman	W 7-2
	Clemson	L 0-9
	South Carolina	W 5-4
	South Florida	L 2-7
	North Florida	W 5-4
	*LSU	L 3-6
	Wake Forest	W 5-2
	South Alabama	L 0-9
	*Mississippi State	L 2-7
	*Alabama	L 3-6
	UAB	W 9-0
	Birmingham Southern	W 9-0
	*Florida	L 0-9
	Florida State	L 2-7
	Baylor	W 9-0
	Michigan State	W 6-3
	Western Illinois	W 8-1
	Miami (Ohio)	L 4-5
	Bowling Green	W 9-0
	Ohio State	W 7-2
	*Kentucky	L 2-7
	*Vanderbilt	W 7-2
	*Ole Miss	W 5-4
	Columbus College	W 7-2
	*Georgia	L 1-8
	*Tennessee	W 6-3

SEC Championship: 3 points (10th)
(at Athens, Ga.)

*SEC Match

1987

Overall: 20-7

SEC: 4-5

Head Coach: Al Parks

Date	Opponent	Result
	Florida State	L 4-5
	South Carolina	L 2-6
	Huntingdon	W 5-4
	North Florida	W 7-2
	Georgia Tech	W 7-0
	Wake Forest	W 6-3
	*LSU	L 2-7
	Birmingham Southern	W 8-1
	UAB	W 6-3
	Baylor	W 8-1
	Southwest Missouri State	W 7-2
	Illinois	W 7-2
	Southern Illinois	W 6-3
	Notre Dame	W 9-0
	Roane State	W 6-3
	Michigan State	W 8-1
	Toledo	W 8-1
	*Florida	L 0-9
	*Georgia	L 2-7
	*Kentucky	L 0-9
	*Tennessee	W 6-3
	*Vanderbilt	W 7-2
	*Mississippi State	L 3-6
	Furman	W 5-4
	*Alabama	W 5-4
	Birmingham Southern	W 6-3
	*Ole Miss	Wf 9-0

SEC Championship: 3 points (10th)
(at Athens, Ga.)

*SEC Match

1988

Overall: 15-10

SEC: 3-6

Head Coach: Ross Boling

Date	Opponent	Result
F11	at North Florida	W 6-3
F12	vs. Miami (Fla.)	L 2-7
F13	*at Florida	L 0-9
F14	at South Florida	W 6-3
F20	*LSU	W 5-4
F23	Northeast Louisiana	W 8-1
F24	at Georgia Tech	W 7-2
F27	at UAB	W 9-0
M4	*at Mississippi State	L 4-5
M5	*at Ole Miss	L 3-6
M11	Baylor	W 6-3
M11	Florida State	W 6-3
M21	at Wake Forest	L 3-6
M22	at South Carolina	L 3-5
M23	at Furman	W 9-0
M25	at Cal State Northridge	W 9-0
M26	vs. Hawaii	W 4-1
M28	at Pacific Lutheran	W 9-0
M28	at Cal State San Diego	W 8-1
A2	*at Alabama	W 5-4
A8	*Vanderbilt	W 7-2
A9	*Tennessee	L 2-7
A10	South Alabama	L 1-5
A17	*Kentucky	L 2-7
A22	*at Georgia	L 1-8

SEC Championship: 5 points (T-8th)
(at Baton Rouge, La.)

*SEC Match

1989

Overall: 19-7

SEC: 4-5

Head Coach: Ross Boling

Date	Opponent	Result
J27	UNC-Charlotte	W 9-0
F4	*at Kentucky	L 2-7
F10	UAB	L 3-6
F12	North Florida	W 7-2
F17	Georgia Tech	W 6-3
F18	South Alabama	W 6-0
F23	Florida State	L 4-5
F24	South Florida	W 5-2
M3	Michigan	W 7-2
M4	*Mississippi State	L 2-7
M19	Flagler	W 5-2
M19	Texas-San Antonio	W 8-1
M20	Furman	W 7-2
M21	South Carolina	L 4-5
M26	Houston	W 5-1
M25	New Mexico	W 7-2
M27	UNLV	W 5-4
M30	Colorado	W 6-3
A1	*Vanderbilt	W 6-3
A8	*Alabama	W 7-2
A9	*Georgia	L 2-7
A14	Tulane	W 5-1
A15	*LSU	W 6-3
A16	*Florida	L 1-8
A21	*Ole Miss	W 8-1
A22	*Tennessee	L 4-5

SEC Championship: 10 points (6th)
(at Oxford, Miss.)

*SEC Match

Final ITA Rankings

Singles

Kristen Overton - #85

Kim Brannon - #95

YEAR-BY-YEAR RESULTS

1990

Overall: 10-14

SEC: 1-8 (9th)

Head Coach: Ross Boling

Date	Opponent	Result
F10	vs. Furman	W 6-3
F10	vs. Rollins	W 8-1
F11	at Georgia Tech	L 3-6
F16	at Miami (Fla.)	L 0-9
F17	vs. Minnesota	L 3-6
F23	vs. UAB	W 8-1
F23	vs. South Florida	L 3-5
F24	vs. Houston	L 3-5
M3	Samford	W 6-0
M3	West Florida	W 9-0
M4	Auburn-Montgomery	W 7-2
M31	*at Ole Miss	L 1-5
A1	*at Alabama	L 0-9
A6	*Vanderbilt	W 5-4
A9	*at Mississippi State	L 4-5
A13	at North Florida	W 6-1
A14	*at Florida	L 0-9
A15	at Flagler	W 6-1
A18	*at Georgia	L 0-6
A20	*Tennessee	L 2-7
A21	*Kentucky	L 2-7
A24	*LSU	L 3-5

SEC Championship: 1.5 points (9th)
(at Starkville, Miss.)

*SEC Match

1991

Overall: 9-14

SEC: 1-8 (9th)

Head Coach: Randy Holden

Date	Opponent	Result
F1	vs. Duke	L 0-9
F2	vs. Southern Methodist	L 1-8
F3	vs. Cal State Santa Barbara	L 3-6
F9	Furman	W 7-2
F11	UAB	W 9-0
F22	at Florida State	L 2-7
F23	vs. South Florida	L 4-5
F24	vs. Northeast Louisiana	W 7-2
M2	*at LSU	L 1-5
M6	Georgia Tech	W 7-2
M8	*Ole Miss	L 0-9
M11	Virginia Tech	W 8-1
M22	*at Kentucky	L 2-5
M23	*at Vanderbilt	W 6-3
M27	*at Tennessee	L 0-6
M30	*Alabama	L 2-7
M31	Northeast Louisiana	W 5-4
A4	Samford	W 6-3
A7	*Florida	L 0-6
A12	*Mississippi State	L 2-5
A14	Minnesota	W 7-2
A17	*Georgia	L 0-6
A25	^ vs. Mississippi State	L 3-5

*SEC Match

^ SEC Tournament (Knoxville, Tenn.)

1992

Overall: 5-13

SEC: 3-8 (10th)

Head Coach: Randy Holden

Date	Opponent	Result
F8	at North Carolina	W 5-4
F9	at Wake Forest	L 0-6
F24	at Texas Christian	L 3-5
F29	*at Mississippi State	W 5-4
M6	Vanderbilt	L 1-5
M12	*at Georgia	L 2-7
M24	at Clemson	L 1-8
M25	*at South Carolina	L 2-5
M29	at Georgia Tech	W 8-1
M31	*LSU	L 3-6
A4	*Tennessee	L 2-7
A4	at South Florida	L 3-6
A6	*at Florida	L 0-9
A11	*at Alabama	W 5-4
A13	*Ole Miss	L 2-6
A16	*Arkansas	W 5-1
A18	*Kentucky	L 4-5
A23	^ vs. Alabama	L 1-5

*SEC Match

^ SEC Tournament (Tuscaloosa, Ala.)

Final ITA Rankings

Singles

Anna Funderburk - #57

1993

Overall: 13-10

SEC: 7-4 (5th)

Head Coach: Ross Boling

Date	Opponent	Result
J30	Middle Tennessee State	W 9-0
J31	Georgia Tech	W 9-0
F8	South Alabama	W 5-2
F13	Samford	W 8-1
F21	*at Arkansas	W 7-2
F26	*Mississippi State	W 9-0
F28	Clemson	L 1-5
M5	at BYU	L 2-6
M6	vs. Utah	L 4-5
M9	*South Carolina	W 5-3
M21	vs. Iowa	W 5-4
M24	vs. Kansas	L 3-6
M25	at San Diego State	L 3-6
M28	*at Kentucky	W 5-1
A2	*at Tennessee	W 5-3
A4	*at Vanderbilt	W 5-4
A10	*Florida	L 0-6
A12	*Ole Miss	L 1-5
A17	*at LSU	W 5-4
A23	*Alabama	L 2-7
A24	*Georgia	L 1-5
A29	^vs. Arkansas	W 6-0
A30	^vs. Alabama	L 2-5

*SEC Match

^ SEC Tournament (Nashville, Tenn.)

Final ITA Rankings

Team

Auburn - #25

Singles

Anna Funderburk - #35

Doubles

Anna Funderburk/Nadia Smirnova
- #22

NCAA Doubles Participants

Anna Funderburk/Nadia Smirnova -
2nd Round

All-SEC Team

Anna Funderburk - 2nd Team (S/D)

Nadia Smirnova - 2nd Team (D)

YEAR-BY-YEAR RESULTS

1994

Overall: 12-10

SEC: 4-7 (8th)

Head Coach: Ross Boling

Date	Opponent	Result
J28	at Minnesota	W 7-2
J29	vs. Baylor	W 5-4
J30	Duke	L 1-5
F11	at Georgia Tech	W 9-0
F13	at Clemson	L 2-7
F16	Samford	W 9-0
F20	UAB	W 8-1
F27	*at South Carolina	L 4-5
M4	Middle Tennessee State	W 9-0
M20	*Kentucky	L 4-5
M23	*Ole Miss	L 3-5
M30	*LSU	W 6-3
A2	*Arkansas	W 5-1
A3	South Alabama	W 5-4
A9	*at Mississippi State	W 6-0
A10	*at Alabama	L 3-6
A15	*at Florida	L 0-6
A19	*at Georgia	L 0-6
A23	*Tennessee	W 6-0
A24	*Vanderbilt	L 3-5
A28	^vs. Tennessee	W 5-4
A29	^vs. Georgia	L 0-5

*SEC Match

^ SEC Tournament (Fayetteville, Ark.)

Final ITA Rankings

Team
Auburn - #24
Singles
Nadia Smirnova - #76
Doubles
Sharon Mieres/Nadia Smirnova - #22

All-SEC Team

Sharon Mieres/Nadia Smirnova - 2nd Team (D)

1995

Overall: 14-8

SEC: 5-6 (8th)

Head Coach: Ross Boling

Date	Opponent	Result
J20	vs. Miami (Ohio)	W 6-1
J21	vs. Western Michigan	W 6-1
J22	at Indiana	W 5-4
F5	UAB	W 5-4
F20	South Alabama	L 3-6
M6	*South Carolina	L 0-6
M9	*Alabama	W 6-2
M18	UNLV	W 5-1
M20	vs. Iowa	W 6-3
M24	*at Vanderbilt	L 4-5
M25	*at Kentucky	W 5-0
M29	at Clemson	W 5-2
A1	*at LSU	L 3-5
A2	vs. Southwest Louisiana	W 5-1
A5	*Mississippi State	W 5-0
A7	*at Tennessee	L 3-6
A15	*Florida	L 0-6
A20	*Georgia	L 0-5
A21	*Ole Miss	W 5-4
A23	*at Arkansas	W 5-3
A27	^vs. Alabama	W 5-1
A28	^vs. Florida	L 0-6

*SEC Match

^ SEC Tournament (Auburn, Ala.)

Final ITA Rankings

Team
Auburn - #23
Singles
Kasey Gladding - #90

1996

Overall: 17-9

SEC: 5-6 (6th)

Head Coach: Ross Boling

NCAA First Round

Date	Opponent	Result
F11	Middle Tennessee State	W 6-0
F11	Southern Mississippi	W 6-3
F14	Southwestern Louisiana	W 5-1
F18	*Arkansas	W 6-3
F23	at Clemson	L 3-5
F27	Samford	W 9-0
M1	*at Alabama	L 2-7
M2	at Kansas	W 5-4
M7	*at Florida	L 0-9
M17	vs. Miami (Fla.)	W 5-2
M20	at UNLV	W 7-2
M22	vs New Mexico	W 5-3
M25	at North Carolina	W 6-0
M26	at NC State	W 6-3
M29	*Tennessee	L 2-6
A2	*at Georgia	W 5-1
A5	*Vanderbilt	L 1-5
A12	*LSU	W 5-1
A14	*at South Carolina	L 2-5
A19	*at Ole Miss	L 1-5
A21	*at Mississippi State	W 5-2
A24	*vs. Kentucky	W 5-1
A26	^ vs. Alabama	W 5-4
A27	^ vs. Vanderbilt	L 3-5
M3	! vs. Tennessee	L 0-5

*SEC Match

^ SEC Tournament (Gainesville, Fla.)

! NCAA Regional (Columbia, S.C.)

Final ITA Rankings

Team
Auburn - #21

1997

Overall: 0-20

SEC: 0-11 (12th)

Head Coach: Ross Boling

Date	Opponent	Result
F14	at Miami (Fla.)	L 0-6
F15	vs. Florida State	L 0-6
F23	Clemson	L 1-5
M1	at Kansas	L 0-9
M2	vs. Kansas State	L 2-7
M7	*at Tennessee	L 0-6
M9	*at Kentucky	L 1-5
M13	*South Carolina	L 1-5
M22	Indiana	L 1-8
M24	*at LSU	L 0-6
M25	at Southwestern Louisiana	L 4-5
M28	*at Vanderbilt	L 2-7
M29	at Middle Tennessee State	L 4-5
M31	*Ole Miss	L 1-5
A4	*at Arkansas	L 0-5
A6	*Alabama	L 1-6
A10	*Georgia	L 0-6
A12	*Florida	L 1-5
A13	*Mississippi State	L 4-5
A17	^vs. LSU	L 0-6

*SEC Match

^SEC Tournament (Athens, Ga.)

YEAR-BY-YEAR RESULTS

1998

Overall: 4-17

SEC: 1-10 (11th)

Head Coach: Troy Porco

Date	Opponent	Result
F6	Samford	W 9-0
F14	at Indiana	L 0-9
F15	vs. Purdue	L 3-6
F20	at Clemson	W 5-4
F22	*at South Carolina	L 1-8
F26	*at Ole Miss	L 1-8
F27	*at Mississippi State	L 2-7
M2	*Vanderbilt	L 0-9
M4	*at Georgia	L 0-9
M6	*Kentucky	L 1-8
M12	Virginia Tech	L 2-7
M20	Middle Tennessee State	L 3-6
M22	Florida State	L 3-6
M25	*at Alabama	W 9-0
M27	Mercer	W 9-0
M28	UAB	L 4-5
A2	*LSU	L 2-7
A4	*Arkansas	L 0-6
A10	*Tennessee	L 0-9
A12	*at Florida	L 0-9
A16	^vs. Tennessee	L 0-6

*SEC Match

^ SEC Tournament (Lexington, Ky.)

1999

Overall: 10-12

SEC: 2-9 (11th)

Head Coach: Troy Porco

NCAA First Round

Date	Opponent	Result
J23	Tennessee	L 3-6
F4	Florida A&M	W 9-0
F7	Florida State	L 2-7
F13	Southern Mississippi	W 5-1
F14	Alabama	W 6-3
F20	Clemson	W 6-3
F21	UAB	W 5-4
F21	Miami (Fla.)	W 7-2
F28	Florida International	W 7-2
M5	Florida	L 0-9
M6	Mississippi State	L 3-6
M7	South Carolina	L 0-6
M11	Ole Miss	L 2-7
M22	Middle Tennessee State	W 7-2
M24	Vanderbilt	L 1-5
M27	LSU	W 5-4
M27	Troy State	W 6-0
A10	Arkansas	L 0-6
A14	Georgia	L 0-6
A18	Kentucky	L 1-5
A22	^vs. Kentucky	L 3-5
M16	! vs. Arizona	L 1-5

*SEC Match

^ SEC Tournament (Baton Rouge, La.)

! NCAA Regionals (Gainesville, Fla.)

Final ITA Rankings

Team

Auburn - #53

Singles

Andrea Piski - #52

Doubles

Andra Piski/Heidii Stewart - #47

2000

Overall: 7-16

SEC: 2-9 (11th)

Head Coach: Troy Porco

Date	Opponent	Result
J21	vs. Mercer	W 9-0
F5	Florida A&M	W 9-0
F12	Florida State	L 3-6
F13	Purdue	W 5-4
F15	Samford	W 8-0
F19	Miami (Fla.)	L 2-5
F20	Middle Tennessee State	L 4-5
F25	at South Florida	L 3-6
F27	*at Florida	L 1-8
M5	at Georgia Tech	L 3-6
M9	*Vanderbilt	L 3-6
M17	*Kentucky	W 5-1
M19	*at Georgia	L 0-6
M21	*at South Carolina	L 3-6
M24	*at Mississippi State	L 2-7
M26	*at Ole Miss	L 2-7
M31	at UAB	W 5-4
A2	South Alabama	L 2-5
A6	*Arkansas	L 2-7
A9	*LSU	L 1-5
A14	*Tennessee	L 1-6
A16	*at Alabama	W 5-1
A18	^ vs. South Carolina	L 2-5

*SEC Match

^ SEC Tournament (Oxford, Miss.)

Final ITA Rankings

Team

Auburn - #72

Singles

Andrea Piski - #72

2001

Overall: 3-17

SEC: 0-11 (12th)

Head Coach: Troy Porco

Date	Opponent	Result
F9	Troy State	W 4-3
F11	Southern Miss	W 7-0
F16	Georgia Tech	L 0-5
F18	*Mississippi State	L 3-4
F23	UAB	L 2-5
F25	*Alabama	L 3-4
M4	at South Alabama	L 3-4
M11	*at Tennessee	L 1-6
M13	*South Carolina	L 2-5
M17	*Florida	L 1-6
M23	*at Vanderbilt	L 1-6
M25	Mercer	W 6-1
M27	at Florida International	L 3-4
M29	at Miami (Fla.)	L 1-6
A1	*Georgia	L 2-5
A7	*at Kentucky	L 1-6
A9	*at Arkansas	L 1-4
A14	*at LSU	L 3-4
A16	*Ole Miss	L 1-6
A19	^ South Carolina	L 1-4

*SEC Match

^SEC Tournament (Starkville, Miss.)

Final ITA Rankings

Singles

Andrea Piski - #49

YEAR-BY-YEAR RESULTS

2002

Overall: 15-9

SEC: 6-5 (1st - West)

Head Coach: Troy Porco

NCAA Second Round

Date	Opponent	Result
F2	Mercer	W 7-0
F3	Florida A&M	W 7-0
F10	Jacksonville University	W 7-0
F15	Florida State	W 4-3
F17	Central Florida	W 5-2
F23	UNC-Charlotte	W 7-0
F25	at Georgia Tech	L 1-6
F28	*at Arkansas	W 4-3
M8	*at Georgia	L 1-6
M10	*at Tennessee	L 3-4
M15	*Ole Miss	W 4-3
M17	*Mississippi State	W 6-1
M19	*at LSU	W 4-3
M22	at Alabama-Birmingham	W 5-0
M27	at UNLV	L 2-5
M29	*South Carolina	L 2-5
A1	*Florida	L 0-4
A5	*at Vanderbilt	L 0-7
A7	*at Kentucky	W 4-3
A14	*Alabama	W 4-2
A18	^ vs. Mississippi State	W 4-1
A19	^ vs. Vanderbilt	L 0-4
M11	! vs. Indiana	W 4-3
M12	! vs. Vanderbilt	L 0-5

*SEC Match

^ SEC Tournament (Columbia, S.C.)

! NCAA Regionals (Nashville, Tenn.)

Final ITA Rankings

Team

Auburn - #31

Singles

Petra Bercik - #121

Doubles

Carolina Maurer/Katia Illarionova - #37

NCAA Doubles Participants

Carolina Maurer/Katie Illarionova - 1st Round

All-SEC Team

Petra Bercik/Carolina Ramirez - 2nd Team (D)

2003

Overall: 9-12

SEC: 2-9 (4th - West)

Head Coach: Troy Porco

Date	Opponent	Result
J26	Florida A&M	W 7-0
J26	Mercer	W 7-0
F1	Jacksonville	W 7-0
F2	Georgia Tech	L 2-5
F9	Southern	W 7-0
F9	UAB	W 5-2
F14	Furman	W 6-1
F25	Troy State	W 7-0
F28	*Arkansas	W 6-1
M2	*LSU	L 2-5
M7	*Georgia	L 0-7
M9	*Tennessee	L 1-6
M14	*at Ole Miss	L 3-4
M16	*at Mississippi State	W 5-2
M28	*at South Carolina	L 2-5
M30	*at Florida	L 0-7
A4	*Vanderbilt	L 0-7
A6	*Kentucky	L 1-6
A9	at Tulsa	L 2-5
A14	*at Alabama	L 3-4
A17	^ vs. South Carolina	L 1-4

*SEC Match

^ SEC Tournament (Knoxville, Tenn.)

Final ITA Rankings

Doubles

Carolina Ramirez/Petra Bercik - #55

2004

Overall: 11-12

SEC: 3-8 (4th - West)

Head Coach: Troy Porco

Date	Opponent	Result
J31	Florida A&M	W 6-0
J31	Mercer	W 7-0
F8	Georgia State	W 5-2
F16	Southern Florida	L 3-4
F19	at Georgia Tech	L 2-5
F21	UAB	W 7-0
F24	Troy	W 7-0
F27	*at Tennessee	L 1-6
F29	*at Georgia	L 0-7
M5	*Mississippi State	W 5-2
M7	*Ole Miss	L 3-4
M13	Ohio State	L 0-7
M19	*Florida	L 0-7
M21	*South Carolina	L 0-7
M26	*at Kentucky	L 2-5
M28	*at Vanderbilt	L 0-7
M30	Jacksonville State	W 7-0
A2	*at LSU	L 2-5
A4	*at Arkansas	W 4-2
A7	Southern Miss	W 6-1
A9	Tennessee-Chattanooga	W 6-1
A11	*Alabama	W 4-3
A15	^ vs. Alabama	L 4-0

*SEC Match

^ SEC Tournament (Nashville, Tenn.)

Final ITA Rankings

Team

Auburn - #60

2005

Overall: 6-15

SEC: 0-11 (6th - West)

Head Coach: Troy Porco

Date	Opponent	Result
J30	Jacksonville	W 5-2
F4	at Central Florida	W 6-1
F6	Florida International	L 0-7
F12	Furman	W 4-3
F15	Alabama-Birmingham	W 6-1
F18	at Cincinnati	W 6-1
F19	Ohio State	L 2-5
M1	Eastern Michigan	W 4-3
M4	*Tennessee	L 1-6
M6	*Georgia	L 0-7
M11	*at Mississippi State	L 1-6
M13	*at Ole Miss	L 1-6
M18	South Alabama	L 2-5
M25	*at Florida	L 0-7
M27	*at South Carolina	L 0-5
A1	*Kentucky	L 0-6
A3	*Vanderbilt	L 0-7
A8	*LSU	L 1-6
A10	*Arkansas	L 2-5
A16	*at Alabama	L 2-5
A21	^ vs. Georgia	L 0-4

*SEC Match

^ SEC Tournament (Tuscaloosa, Ala.)

YEAR-BY-YEAR RESULTS

2006

Overall: 6-18
SEC: 0-11 (6th - West)
Head Coach: Tim Gray

Date	Opponent	Result
J22	at Jacksonville	W 4-2
J22	at North Florida	W 5-1
J23	at Stetson	W 5-2
J30	at Florida State	L 3-4
F19	Georgia Tech	L 0-7
F25	at Southern Illinois	W 6-0
F26	at DePaul	L 0-7
M3	*at Kentucky	L 0-7
M5	*at Vanderbilt	L 0-7
M8	Troy	L 3-4
M10	*Mississippi State	L 1-6
M12	*Ole Miss	L 2-5
M16	Louisville	L 2-5
M17	Georgia State	W 6-1
M24	*at Georgia	L 1-6
M26	*at Tennessee	L 2-5
M31	*South Carolina	L 1-6
A2	*Florida	L 0-7
A10	*at Arkansas	L 0-7
A9	*at LSU	L 2-5
A11	at South Alabama	L 2-5
A13	Samford	W 5-2
A15	*Alabama	L 1-6
A20	^ vs. Tennessee	L 4-0

*SEC Match
^ SEC Tournament (Gainesville, Fla.)

2007

Overall: 14-10
SEC: 5-6 (T-1st - West)
Head Coach: Tim Gray
NCAA Second Round

Date	Opponent	Result
F3	Mercer	W 7-0
F3	Florida A&M	W 7-0
F10	at Texas A&M	L 2-5
F11	at Rice	W 6-1
F17	at Georgia Tech	L 0-7
F23	at Louisville	W 5-2
F24	Ohio State	W 6-1
M2	*Kentucky	L 3-4
M4	*Vanderbilt	L 2-5
M9	*at Mississippi State	W 6-1
M13	*at Ole Miss	W 6-1
M18	at South Florida	W 5-2
M23	*Georgia	W 4-3
M25	*Tennessee	L 2-5
M30	*at South Carolina	L 3-4
A1	*at Florida	L 0-7
A6	*Arkansas	W 5-2
A8	*LSU	L 3-4
A12	South Alabama	W 7-0
A14	*at Alabama	W 4-3
A19	^ vs. Arkansas	W 4-1
A20	^ vs. Georgia	L 1-4
M12	! vs. NC State	W 4-3
M13	! vs. Georgia	L 0-4

*SEC Match
^ SEC Tournament (Lexington, Ky.)
! NCAA Regionals (Athens, Ga.)

Final ITA Rankings

Team
Auburn - #29
Singles
Fani Chifchieva - #16
Doubles
Alex Haney/Melissa Koning - #19

All-Americans

Fani Chifchieva - Singles

NCAA Participants - Singles

Fani Chifchieva - 2nd Round

NCAA Participants - Doubles

Alex Haney/Melissa Koning - 1st Round

All-SEC Team

2008

Overall: 17-10
SEC: 5-6 (3rd - West)
Head Coach: Tim Gray
NCAA Second Round

Date	Opponent	Result
J23	Georgia Tech	L 0-7
J26	Mercer	W 7-0
J26	Alabama A&M	W 7-0
F2	at Georgetown	W 7-0
F3	at Maryland	W 7-0
F12	Georgia State	W 7-0
F15	at Florida State	L 2-5
F16	at Troy	W 7-0
F23	Jacksonville State	W 7-0
F24	Southern Miss	W 7-0
F29	*at Arkansas	W 4-3
M2	*at LSU	L 3-4
M7	*Ole Miss	W 6-1
M9	*Mississippi State	W 5-2
M11	TCU	W 4-3
M21	*at Vanderbilt	L 2-5
M23	*Kentucky	L 3-4
M26	Marshall	W 6-1
M28	*at Tennessee	L 3-4
M30	*at Georgia	L 2-5
A4	*Florida	L 3-4
A6	*South Carolina	W 4-3
A12	*Alabama	W 6-1
A17	^ vs. South Carolina	W 4-0
A18	^ vs. Florida	L 0-4
M9	! vs. Ohio State	W 4-3
M10	! vs. Florida	L 0-4

*SEC Match
^ SEC Tournament (Auburn, Ala.)
! NCAA Regionals (Gainesville, Fla.)

Final ITA Rankings

Team
Auburn - #28
Singles
Fani Chifchieva - #11
Alex Haney - #70
Doubles
Alex Haney/Melissa Koning - #10

All-Americans

Fani Chifchieva - Singles
Alex Haney/Melissa Koning - Doubles

NCAA Participants - Singles

Fani Chifchieva - Semifinals

NCAA Participants - Doubles

Alex Haney/Melissa Koning - 2nd Round

2009

Overall: 11-13
SEC: 3-7 (4th - West)
Head Coach: Tim Gray
NCAA First Round

Date	Opponent	Result
J28	at Georgia Tech	L 2-5
J31	Louisville	W 4-0
F1	at Clemson	L 3-4
F6	at Texas A&M	L 2-5
F8	at TCU	L 3-4
F21	UAB	W 7-0
F21	Georgia State	W 5-2
F28	Mercer	W 4-0
F28	at Troy	W 4-0
M6	*at LSU	W 5-2
M8	*Arkansas	L 1-6
M15	*at Ole Miss	W 4-3
M21	William & Mary	W 5-2
M22	Marshall	W 7-0
M26	*Vanderbilt	L 3-4
M29	*at Kentucky	W 5-2
M31	Southern Miss	W 7-0
A3	*Georgia	L 2-5
A5	*Tennessee	L 2-5
A10	*at South Carolina	L 2-5
A12	*at Florida	L 3-4
A18	*at Alabama	L 3-4
A23	^ vs. Alabama	L 0-4
M9	! vs. Florida State	L 0-4

*SEC Match
^ SEC Tournament (Tuscaloosa, Ala.)
! NCAA Regionals (Gainesville, Fla.)

Final ITA Rankings

Team
Auburn - #35
Singles
Fani Chifchieva - #15
Alex Haney - #30

All-Americans

Fani Chifchieva - Singles

NCAA Participants - Singles

Fani Chifchieva - 1st Round

NCAA Participants - Doubles

Whitney Chappell/Alex Haney - 1st Round

All-SEC Team

Fani Chifchieva - 1st Team

YEAR-BY-YEAR RESULTS

2010

Overall: 9-11
SEC: 3-8 (5th - West)
Head Coach: Tim Gray

Date	Opponent	Result
J 23	Kennesaw State	W 7-0
J 24	Georgia Tech	L 0-7
J 29	vs. LSU	W 4-0
J 30	at USC	L 0-4
F 6	Alabama A&M	W 7-0
F 13	Jacksonville State	W 7-0
F 24	Troy	W 7-0
F 28	TCU	W 4-3
M 5	*at Tennessee	L 6-1
M 7	*at Georgia	L 4-3
M 12	*Florida	L 6-1
M 14	*South Carolina	W 4-3
M 26	*Kentucky	W 5-2
M 28	*at Vanderbilt	L 7-0
A 2	*at Arkansas	L 6-1
A 4	*at LSU	L 5-2
A 9	*Ole Miss	L 4-3
A 11	*Mississippi State	W 6-1
A 17	*Alabama	L 4-3
A 22	^ vs. Arkansas	L 4-0

*SEC Match
^ SEC Tournament (Athens, Ga.)

Final ITA Rankings

Team
Auburn - #58
Singles
Fani Chifchieva - #31
Doubles
Paula Schippers/Myrthe Molenveld
- #87

NCAA Participants - Singles
Fani Chifchieva - 2nd Round

All-SEC Team

Fani Chifchieva - 1st Team

2011

Overall: 5-18
SEC: 1-10 (5th - West)
Head Coach: Tim Gray

Date	Opponent	Result
J 29	at Michigan	L 7-0
J 30	vs. North Carolina State	L 7-0
F 11	at Florida State	L 6-1
F 13	at Georgia Tech	L 7-0
F 19	Alabama A&M	W 7-0
F 19	Memphis	W 4-3
F 25	vs. Ohio State	L 4-0
F 26	vs. Depaul	L 4-3
F 27	vs. Utah	L 4-1
M 4	*Georgia	L 7-0
M 6	*Tennessee	L 6-1
M 11	*at South Carolina	L 4-3
M 13	*at Florida	L 4-0
M 19	Boston University	W 4-3
M 19	Troy	W 6-1
M 25	*Vanderbilt	L 7-0
M 27	*at Kentucky	L 6-1
A 1	*LSU	L 5-2
A 3	*Arkansas	L 6-1
A 8	*at Mississippi State	W 4-1
A 10	*at Ole Miss	L 4-0
A 18	*at Alabama	L 7-0
A 21	^ vs. Arkansas	L 4-0

*SEC Match
^ SEC Tournament (Knoxville, Tenn.)

2012

Overall: 8-13
SEC: 3-8 (T-4th - West)
Head Coach: Lauren Spencer

Date	Opponent	Result
J28	at Troy	W 5-2
J29	Alabama A&M	W 7-0
J29	Southern Miss	W 7-0
F12	at Florida State	L 5-2
F19	at Louisiana-Monroe	W 6-1
F24	Virginia	L 5-0
F25	SMU	W 4-3
F26	Oklahoma State	L 4-3
M2	*Ole Miss	L 7-0
M4	*Mississippi State	W 4-3
M9	*at Arkansas	W 5-2
M11	*at LSU	L 4-3
M14	Georgia Tech	L 5-2
M23	*Kentucky	W 5-2
M25	*at Vanderbilt	L 5-2
M30	*Florida	L 7-0
A1	*South Carolina	L 4-3
A6	*at Tennessee	L 4-3
A8	*at Georgia	L 6-1
A14	*Alabama	L 4-3
A19	^ vs. Tennessee	L 4-2

*SEC Match
^ SEC Tournament (Oxford, Miss.)

Final ITA Rankings

Team
Auburn - #73

2013

Overall: 19-9
SEC: 7-6 (3rd - West)
Head Coach: Lauren Spencer

NCAA Second Round

Date	Opponent	Result
J26	at North Carolina	L 0-4
J27	at Depaul	W 4-0
F3	Georgia Southern	W 7-0
F3	Alabama A&M	W 7-0
F9	Georgia State	W 6-1
F13	Alabama State	W 7-0
F13	Troy	W 7-0
F21	Texas Tech	W 5-2
F23	Tulane	W 5-2
F23	UAB	W 5-2
M1	*at Mississippi State	W 5-1
M3	*at Ole Miss	W 4-3
M8	*LSU	W 7-0
M10	*Arkansas	W 6-1
M15	*at Alabama	L 3-4
M22	*at South Carolina	L 0-5
M25	*at Florida	L 0-4
M29	*Vanderbilt	L 2-5
M31	*Kentucky	W 4-0
A5	*at Texas A&M	L 0-4
A7	*at Missouri	W 4-1
A12	*Georgia	L 0-4
A14	*Tennessee	W 4-1
A18	^vs. Arkansas	W 4-3
A19	^ vs. Texas A&M	L 0-4
M10	! vs. Saint Mary's	W 4-2
M11	! at California	L 0-4

*SEC Match
^SEC Tournament (Starkville, Miss.)
! NCAA Regionals (Berkeley, Calif.)

Final ITA Rankings

Team
Auburn - #25
Singles
Pleun Burgmans - #25
Doubles
Pleun Burgmans/Plamena Kurteva - #19
Jen Pfiefler/Jackie Kasler - #40

NCAA Participants - Singles
Pleun Burgmans - 1st Round

NCAA Participants - Doubles
Pleun Burgmans/Plamena Kurteva - 1st Round

All-SEC Team

2014

Overall: 17-11
 SEC: 6-7 (T-6th)
 Head Coach: Lauren
 Spencer
 NCAA Second Round

Date	Opponent	Result
J25	at #17 Texas	L 1-4
J26	vs. #24 Florida State	W 4-1
F1	Troy	W 7-0
F9	Georgia Southern	W 7-0
F9	Samford	W 4-0
F14	at Southern	W 7-0
F14	at Tulane	W 4-2
F15	vs. Northwestern State	W 4-0
F15	vs. Nicholls State	W 4-1
F21	vs. #75 Tulane	W 4-0
F22	vs. #24 Rice	L 2-4
F23	vs. #21 Texas Tech	W 4-3
F28	*#32 Ole Miss	W 5-2
M2	*Mississippi State	W 6-1
M7	*at #45 Arkansas	W 4-3
M9	*at #47 LSU	W 4-3
M14	*#8 Alabama	L 2-4
M21	*at #5 Florida	L 0-4
M23	*at #56 South Carolina	W 4-1
M28	*at #34 Kentucky	L 0-4
M30	*at #10 Vanderbilt	L 0-4
A4	*Missouri	W 4-0
A6	*at #10 Texas A&M	L 2-4
A11	*at #31 Tennessee	L 3-4
A13	*at #8 Georgia	L 0-4
A17	^ vs. #38 Kentucky	L 2-4
M9	! vs. #58 Winthrop	W 4-1
M10	! at #14 Clemson	L 0-5

*SEC Match
 ^ SEC Tournament (Columbia, Mo.)
 ! NCAA Regionals (Clemson, S.C.)

Final ITA Rankings

Team
 Auburn - #27
 Singles
 Pleun Burgmans - #49
 Doubles
 Pleun Burgmans/Emily Flickinger - #10
 Michala Kucharova/Reka Muller - #66
 Jen Pfiefler/Jackie Kasler - #73

All-Americans

Pleun Burgmans/Emily Flickinger - Doubles

NCAA Participants - Doubles

Pleun Burgmans/Emily Flickinger - Semifinals

2015

Overall: 16-15
 SEC: 3-10 (12th)
 Head Coach: Lauren
 Spencer
 NCAA First Round

Date	Opponent	Result
J17	Middle Tennessee State	W 4-1
J17	Alabama A&M	W 4-0
J24	vs #62 Wake Forrest	W 4-0
J25	vs. #10 Georgia	L 4-0
J31	at #29 Texas Tech	L 4-1
J31	vs. Wyoming	W 4-0
F7	vs. Washington State	W 6-1
F7	vs. Wyoming	W 7-0
F8	vs. Washington	W 5-2
F14	vs. #73 Samford	W 4-0
F14	at UAB	W 4-0
F15	Troy	W 7-0
F27	*at #42 South Carolina	L 4-1
M1	*at #3 Florida	L 5-0
M6	*Tennessee	W 4-0
M8	*#6 Georgia	L 4-1
M15	*at #16 Ole Miss	L 4-3
M20	*at #30 Texas A&M	L 4-0
M22	*at #49 LSU	L 5-2
M27	*#10 Vanderbilt	L 6-1
M29	*#18 Kentucky	W 4-1
A1	*at #44 Mississippi State	L 4-3
A4	*at #12 Alabama	L 4-0
A7	Alabama A&M	W 7-0
A7	Alabama A&M	W 5-0
A10	*Missouri	W 7-0
A12	*#38 Arkansas	L 4-3
A15	^ vs. #67 Tennessee	W 4-2
A16	^ vs. #13 Alabama	L 4-0
M8	! vs. #19 Pepperdine	L 4-2

*SEC Match
 ^ SEC Tournament (Columbia, S.C.)
 ! NCAA Regionals (Palo Alto, Calif.)

Final ITA Rankings

Team
 Auburn - #46
 Singles
 Pleun Burgmans - #67
 Doubles
 Pleun Burgmans/Emily Flickinger - #10

All-Americans

Pleun Burgmans/Emily Flickinger - Doubles

NCAA Participants - Doubles

Pleun Burgmans/Emily Flickinger - 1st Round

All-SEC Team

2016

Overall: 24-8
 SEC: 9-4 (T-4th)
 Head Coach: Lauren
 Spencer
 NCAA Super Regionals

Date	Opponent	Result
J16	UAB	W 7-0
J22	vs. #69 Michigan State	W 4-2
J23	at #12 Miami	L 4-1
J30	Samford	W 7-0
F06	UT Martin	W 4-0
F06	Troy	W 7-0
F07	Texas State	W 6-1
F07	Alabama A&M	W 7-0
F13	Mercer	W 4-0
F13	Mercer	W 7-0
F20	North Florida	W 7-0
F20	Georgia Southern	W 5-1
F27	vs. #11 Oklahoma St.	W 4-3
F28	vs. #10 Pepperdine	L 4-0
M03	#14 Texas A&M	W 4-2
M05	#9 LSU	W 4-0
M11	at #71 Tennessee	W 4-2
M13	at #3 Georgia	L 4-1
M18	at #61 Missouri	W 5-2
M20	at #31 Arkansas	L 6-1
M24	#27 Mississippi State	W 5-2
M26	#39 Ole Miss	W 4-1
A01	#51 Alabama	W 4-3
A08	#10 South Carolina	W 4-3
A10	#8 Florida	L 4-0
A15	at #6 Vanderbilt	L 4-3
A17	at #20 Kentucky	W 4-3
A22	vs. #11 South Carolina	W 4-0
A23	vs. #3 Florida	L 4-2
M13	! Alcorn State	W 4-0
M14	! #22 Arizona State	W 4-2
M19	!! vs. #6 Vanderbilt	L 4-0

*SEC Match
 ^ SEC Tournament (Baton Rouge, La.)
 ! NCAA Regionals (Auburn, Ala.)
 !! NCAA Championships (Tulsa, Okla.)

Final ITA Rankings

Team
 Auburn - #12
 Singles
 Andie Dikosavljevic - #21
 Alizee Michaud - #39
 Pleun Burgmans - #69
 Doubles
 Pleun Burgmans/Alizee Michaud - #9
 Pleun Burgmans/Paula de Man - #76

All-Americans

Pleun Burgmans/Alizee Michaud - Doubles

NCAA Participants - Singles

Alizee Michaud - 1st Round
 Andie Dikosavljevic - 1st Round

NCAA Participants - Doubles

Pleun Burgmans/Alizee Michaud - 2nd Round

2017

Overall: 25-11
 SEC: 5-8 (10th)
 Head Coach: Lauren
 Spencer
 NCAA Super Regionals

Date	Opponent	Result
J21	Samford	W 7-0
J22	ULM	W 4-1
J22	Georgia State	W 4-0
J27	Fresno State	W 4-0
J29	#18 Southern California	W 4-1
F3	at Illinois	W 4-1
F5	at Michigan State	W 4-3
F14	vs. #7 Ohio State	L 4-1
F14	vs. Yale	W 4-1
F14	vs. #11 Georgia Tech	W 4-2
F14	Troy	W 7-0
F14	Alabama A&M	W 6-1
F17	Mercer	W 7-0
F17	Mercer	W 4-1
F27	vs. Tulane	W 4-0
F27	vs. Denver	W 4-0
F27	vs. #5 Texas Tech	W 4-2
M8	at #33 Mississippi State	W 6-1
M10	#16 Tennessee	W 4-0
M12	#13 Georgia	L 1-4
M17	at #22 Texas A&M	L 1-4
M19	at #27 LSU	L 3-4
M24	#8 Vanderbilt	L 2-5
M26	#13 Kentucky	L 3-4
M31	#13 South Carolina	W 4-3
A2	#1 Florida	L 0-4
A7	at #38 Alabama	L 3-4
A12	at #27 Ole Miss	W 4-0
A14	Missouri	W 4-1
A16	#18 Arkansas	W 4-3
A20	^ vs. #14 Arkansas	W 4-3
A21	^ vs. #4 Georgia	W 4-1
A22	^ vs. #1 Florida	L 2-4
M12	! DePaul	W 4-0
M13	! #37 Florida State	W 4-2
M19	!! vs. #6 Texas Tech	L 2-4

*SEC Match
 ^SEC Tournament (Nashville, Tenn.)
 ! NCAA Regionals (Auburn, Ala.)
 !! NCAA Championships (Athens, Ga.)

Final ITA Rankings

Team
 Auburn - #14
 Singles
 Alizee Michaud - #22
 Andie Dikosavljevic - #38
 Taylor Russo - #104
 Doubles
 Alizee Michaud/Taylor Russo - #15
 Caroline Turner/Georgie Axon - #63
 Andie Dikosavljevic/Alannah Griffin - #79

NCAA Participants - Doubles

Alizee Michaud/Taylor Russo - 2nd Round

All-SEC Team

2018

Overall: 20-11
 SEC: 8-5 (6th)
 Head Coach: Lauren
 Spencer
 NCAA First Round

Date Result	Opponent	
J 19	ULM	W 4-0
J 19	Georgia State	W 4-0
J 20	Oklahoma	W 4-0
J 27	Tulane	W 4-0
J 28	#17 Miami	W 4-2
F 2	at Cornell	W 7-0
F 4	at Princeton	L 2-4
F 9	vs. #6 Pepperdine	L 2-4
F 10	vs. #10 Michigan	W 4-3
F 11	vs. #21 Wake Forest	L 2-4
F 17	Michigan State	W 4-0
F 17	Samford	W 4-0
F 23	vs. Denver	W 4-1
F 24	vs. #5 Illinois	L 3-4
F 24	vs. #31 Alabama	W 4-0
M 2	*at #4 Vanderbilt	L 1-4
M 4	*at #15 Kentucky	W 4-3
M 8	*Mississippi State	W 4-0
M 10	*#12 Ole Miss	W 4-3
M 10	Alabama A&M	W 7-0
M 16	*Alabama	W 4-0
M 22	*#10 South Carolina	L 1-4
M 24	*#18 Florida	L 1-4
M 29	*at #38 Tennessee	L 2-4
M 31	*at #8 Georgia	L 1-4
A 6	*at Missouri	W 4-2
A 8	*at Arkansas	W 4-3
A 13	*#32 Texas A&M	W 4-2
A 15	*#39 LSU	W 4-2
A 19	^ vs. Arkansas	L 2-4
M 11	! vs. Winthrop	L 3-4

*SEC Match
 ^SEC Tournament (Knoxville, Tenn.)
 ! NCAA Regionals (Atlanta, Ga.)

Final ITA Rankings

Team
 Auburn - #24
 Singles
 Jaeda Daniel - #61
 Alizee Michaud - #119

NCAA Participants - Singles
 Jaeda Daniel - 1st Round

All-SEC Team

Jaeda Daniel - 1st Team/Freshman
 Team
 Alizee Michaud - 2nd Team

2019

Overall: 14-15
 SEC: 1-12 (13th)
 Head Coach: Lauren
 Spencer

Date Result	Opponent	
J 19	Alabama A&M	W 7-0
J 19	Mercer	W 7-0
J 20	Central Arkansas	W 4-3
J 20	Mercer	W 4-0
J 26	vs. #25 Kentucky	L 0-4
J 27	at #13 Georgia Tech	W 4-3
F 2	Houston	W 4-1
F 2	UAB	W 4-3
F 9	Jackson State (DH-1)	W 4-0
F 9	Jackson State (DH-2)	W 4-0
F 17	Samford	W 4-0
F 17	Georgia State	W 5-0
F 22	vs. #13 Oklahoma State	L 2-4
F 23	vs. Fresno State	W 4-1
F 23	vs. #43 Alabama	W 4-3
M 1	*at #24 Texas A&M	L 2-4
M 3	*at #12 LSU	L 1-4
M 8	*#5 Vanderbilt	L 1-4
M 10	*#18 Kentucky	L 1-4
M 15	*at Mississippi State	L 2-4
M 17	*at Ole Miss	L 2-4
M 22	*at Alabama	L 2-4
M 29	*#18 Tennessee	L 2-4
M 31	*#1 Georgia	L 0-4
A 5	*at #3 South Carolina	L 0-4
A 7	*at #23 Florida	L 2-4
A 12	*Missouri	W 4-1
A 14	*#44 Arkansas	L 0-4
A 17	^ vs #49 Mississippi State	L 1-4

*SEC Match
 ^SEC Tournament (College Station, Texas)

Final ITA Rankings

Team
 Auburn - #62
 Singles
 Jaeda Daniel - #94
 Doubles
 Sophia Graver/Taylor Russo - #45
 Jaeda Daniel/Madeline Meredith - #89

2020

Overall: 8-6
 SEC: 1-3
 Head Coach: Caroline
 Lilley

Date Result	Opponent	
J 18	Central Arkansas	W 5-0
J 18	UAB	W 4-0
J 24	at #2 North Carolina	L 0-4
J 25	vs. Columbia	W 4-2
F 1	Georgia State	W 6-1
F 1	Alabama A&M	W 7-0
F 2	Memphis	W 7-0
F 21	vs. Arizona	W 4-2
F 22	vs. #19 Wake Forest	L 1-4
F 22	vs. Yale	L 2-4
F 28	*#30 South Carolina	L 2-4
M 1	*Florida	L 3-4
M 6	*at #17 Vanderbilt	L 1-4
M 8	*at #34 Kentucky	W 4-3

*SEC Match

2020 Season Shortened
 by
 COVID-19 Pandemic

Remainder of season canceled March 13

SEC, NCAA Tournaments canceled

Final ITA Rankings

Team
 Auburn - #42
 Singles
 Selin Ovunc - #64
 Taylor Russo - #83
 Doubles
 Selin Ovunc/Taylor Russo - #14

2021

Overall: 14-9
 SEC: 7-6 (6th)
 Head Coach: Caroline
 Lilley
 NCAA Second Round

Date Result	Opponent	
J 17	at Furman	W 4-3
J 22	Samford	W 7-0
J 29	South Florida	W 4-0
J 31	at #6 Georgia Tech	L 2-5
F 7	at Clemson	W 4-3
F 13	North Florida	W 7-0
F 19	*#20 South Carolina	W 4-2
F 21	*#22 Florida	W 4-2
F 26	*at #10 Vanderbilt	L 3-4
F 28	*at Kentucky	W 4-2
M 6	*#44 Alabama	W 4-1
M 11	*#36 Mississippi State	W 4-0
M 13	*#30 Ole Miss	L 0-4
M 26	*at #22 Arkansas	W 4-2
M 28	*at Missouri	W 4-1
A 1	*#17 Texas A&M	L 1-4
A 3	*#14 LSU	L 3-4
A 8	*at #16 Tennessee	L 1-4
A 10	*at #3 Georgia	L 2-4
A 20	^ vs. #30 Arkansas	W 4-1
A 21	^ vs. #17 Texas A&M	L 2-4
M 7	! vs. #37 Oklahoma State	W 4-2
M 8	! at #7 Florida State	L 1-4

*SEC Match
 ^ SEC Tournament (Tuscaloosa, Ala.)
 ! NCAA Regionals (Tallahassee, Fla.)

Final ITA Rankings

Team
 Auburn - #22
 Singles
 Selin Ovunc - #50
 Carolyn Ansari - #67
 Doubles
 Selin Ovunc/Taylor Russo - #23
 Georgie Axon/Adeline Flach - #76

NCAA Participants - Singles

Selin Ovunc - Round of 16

NCAA Selections - Doubles

Selin Ovunc/Taylor Russo - Selected

All-SEC Team

Selin Ovunc - 2nd team, All-Newcomer
 Carolyn Ansari - 2nd team, All-Newcomer

2022

Overall: 22-6

SEC: 11-2 (2nd)

Head Coach: Caroline

Lilley

NCAA Super Regionals

Date	Opponent	Result
J 23	Furman	W 4-3
J 23	UAB	W 7-0
J 28	vs. Arizona State	W 4-3
J 29	at #10 UCF	W 4-0
F 4	Georgia Tech	W 5-2
F 6	Clemson	W 7-0
F 6	Alabama A&M	W 7-0
F 11	% vs. #6 NC State	L 2-4
F 12	% vs. #16 Washington	W 4-1
F 13	% vs. #11 Ohio State	L 3-4
F 20	Tulane	W 5-2
M 4	* #22 Vanderbilt	W 4-3
M 6	* #28 Kentucky	W 6-1
M 12	* at #19 Alabama	W 5-2
M 18	* at #64 Mississippi State	W 5-2
M 20	* at #61 Ole Miss	W 4-3
M 25	* #33 Arkansas	W 6-1
M 27	* Missouri	W 6-1
A 1	* at #7 Texas A&M	L 0-7
A 3	* at #64 LSU	W 6-1
A 8	* at #34 South Carolina	L 3-4
A 10	* at #15 Florida	W 6-1
A 15	* #26 Tennessee	W 6-1
A 17	* #10 Georgia	W 4-3
A 22	^ vs #26 Tennessee	L 2-4
M 6	! Jackson State	W 5-0
M 7	! #33 Georgia Tech	W 4-3
M 13	!! at #3 Texas	L 1-4

*SEC Match

% ITA National Indoors (Madison, Wis.)

^SEC Tournament (Gainesville, Fla.)

! NCAA Regionals (Auburn, AL)

!! NCAA Super Regional (Austin, Texas)

Final ITA Rankings

Team

Auburn - #14

Singles

Selin Ovunc - #41

Ariana Arseneault - #83

Carolyn Ansari - #119

Doubles

Selin Ovunc/Ariana Arseneault - #13

NCAA Participants - Singles

Selin Ovunc - Selected

NCAA Participants - Doubles

Selin Ovunc/Ariana Arseneault - Selected

All-SEC Team

Carolyn Ansari - First Team

Ariana Arseneault - First Team

Selin Ovunc - First Team

2023

Overall: 20-9

SEC: 8-5 (5th)

Head Coach: Caroline

Lilley

NCAA Super Regionals

Date	Opponent	Result
J 20	Iowa State	W 5-2
J 22	North Carolina	L 1-6
J 22	Samford	W 7-0
J 28	USSB	W 4-2
J 29	UCF	W 4-1
F 5	Texas Tech	W 4-3
F 10	% Ohio State	L 0-4
F 11	% San Diego	W 4-3
F 12	% Pepperdine	W 4-2
F 19	Belmont	W 6-1
F 19	UAB	W 7-0
F 25	at North Florida	W 4-3
M 5	*Alabama	W 4-3
M 10	*Ole Miss	W 4-3
M 12	*Mississippi State	W 6-1
M 17	*at Tennessee	L 1-6
M 19	*at Georgia	L 2-5
M 24	*LSU	W 4-3
M 26	*Texas A&M	L 2-5
M 31	*Kentucky	W 5-2
A 2	*Vanderbilt	W 5-2
A 7	*at Arkansas	L 1-6
A 9	*at Missouri	W 4-0
A 14	*South Carolina	W 5-2
A 16	*Florida	L 2-5
A 20	^ Ole Miss	L 3-4
M 5	! FIU	W 4-3
M 6	! Miami	W 4-3
M 13	!! NC State	L 0-4

*SEC Match

% ITA National Indoors (Seattle, WA)

^SEC Tournament (Fayetteville, AR)

! NCAA Regionals (Coral Gables, FL)

!! NCAA Super Regional (Raleigh, NC)

Final ITA Rankings

Team

Auburn - #17

Singles

Ariana Arseneault - #27

Carolyn Ansari - #29

Doubles

Carolyn Ansari/Ariana Arseneault - #32

NCAA Participants - Singles

Carolyn Ansari-Round of 16

Ariana Arseneault- Round of 16

NCAA Participants - Doubles

Carolyn Ansari/Ariana Arseneault- Selected

All-SEC Team

Carolyn Ansari - First Team

Ariana Arseneault - Second Team

DJ Bennett- Freshman Team

YEAR-BY-YEAR RESULTS

<i>Year</i>	<i>Coach</i>	<i>Overall</i>	<i>SEC</i>	<i>SEC Division Finish</i>	<i>Final ITA Ranking</i>	<i>Postseason</i>
1978	Betty Brown	22-9	NA	NA	N/A	
1979	Betty Brown	9-12	2-5	NA	N/A	
1980	Pat Gilliam	15-8	3-1	7th	N/A	
1981	Pat Gilliam	12-7	4-2	7th	N/A	
1982	Pat Gilliam	15-16	2-5	7th	N/A	
1983	Pat Gilliam	14-13	5-3	6th	N/A	
1984	Pat Gilliam	11-9	6-3	T-5th	N/A	
1985	Susie Fain	17-22	2-8	10th	N/A	
1986	Susie Fain	17-13	3-6	10th	N/A	
1987	Al Parks	20-7	4-5	10th	N/A	
1988	Ross Boling	15-10	3-6	T-8th	N/A	
1989	Ross Boling	19-7	4-5	6th	N/A	
1990	Ross Boling	10-14	2-9	9th	N/A	
1991	Randy Holden	9-14	1-8	9th	N/A	
1992	Randy Holden	5-13	3-9	10th	N/A	
1993	Randy Holden	13-10	8-5	5th	25th	
1994	Randy Holden	12-10	4-7	8th	34th	
1995	Randy Holden	14-8	6-7	6th	23rd	
1996	Randy Holden	16-9	6-8	6th	21st	NCAA First Round
1997	Randy Holden	0-20	0-12	12th	N/A	
1998	Troy Porco	4-17	1-11	11th	N/A	
1999	Troy Porco	10-12	2-10	11th	53rd	NCAA First Round
2000	Troy Porco	7-16	2-9	11th	72nd	
2001	Troy Porco	3-17	0-11	12th	N/A	
2002	Troy Porco	15-9	6-5	6th; 1st West	31st	NCAA Second Round
2003	Troy Porco	9-12	2-9	10th; 4th West	N/A	
2004	Troy Porco	11-12	3-8	T-9th; T-3rd West	60th	
2005	Troy Porco	6-15	0-11	12th; 6th West	N/A	
2006	Tim Gray	6-18	0-11	12th; 6th West	N/A	
2007	Tim Gray	14-10	5-6	T-7th; T-1st West	29th	NCAA Second Round
2008	Tim Gray	17-10	5-6	T-7th; 3rd West	28th	NCAA Second Round
2009	Tim Gray	11-13	3-7	T-9th; T-4th West	35th	NCAA First Round
2010	Tim Gray	9-11	3-8	T-11th; T-5th West	58th	
2011	Tim Gray	5-18	1-10	11th; 5th West	N/A	
2012	Lauren Spencer	8-13	3-7	T-9th; T-4th West	73rd	
2013	Lauren Spencer	19-9	7-6	T-5th; 3rd West	25th	NCAA Second Round
2014	Lauren Spencer	17-11	6-7	T-6th	27th	NCAA Second Round
2015	Lauren Spencer	16-14	3-10	12th	46th	NCAA First Round
2016	Lauren Spencer	24-8	9-4	4th	12th	NCAA Round of 16
2017	Lauren Spencer	25-11	5-8	10th	14th	NCAA Round of 16
2018	Lauren Spencer	20-11	8-5	6th	24th	NCAA First Round
2019	Lauren Spencer	14-15	1-12	13th	N/A	
2020	Caroline Lilley	8-6	1-3	N/A (pandemic)	42nd	(no tournament)
2021	Caroline Lilley	14-9	7-6	T-6th	22nd	NCAA Second Round
2022	Caroline Lilley	22-6	11-2	2nd	14th	NCAA Super Regional
2023	Caroline Lilley	20-9	8-5			
ALL TIME		579-532	162-306			

INDIVIDUALS IN ITA FINAL TOP 100

1989

No. 85 Kristen Overton
No. 95 Kim Brannon

1992

No. 57 Anna Funderbunk

1993

No. 25 Auburn
No. 35 Anna Funderburk
No. 22 Anna Funderbunk/Nadia Smirnova

1994

No. 34 Auburn
No. 76 Nadia Smirnova
No. 32 Nadia Smirnova/Mieres

1995

No. 23 Auburn
No. 90 Kasey Gladding

1996

No. 21 Auburn

1999

No. 53 Auburn
No. 52 Andrea Piski
No. 47 Andrea Piski/Heidii Stewart

2000

No. 72 Auburn
No. 72 Andrea Piski

2001

No. 49 Andrea Piski

2002

No. 31 Auburn
No. 121 Petra Bercik
No. 37 Carolina Maurer/Katia Illarionova

2003

No. 55 Carolina Ramirez/Petra Bercik

2004

No. 60 Auburn

2007

No. 29 Auburn
No. 16 Fani Chifchieva
No. 19 Alex Haney/Melissa Koning

2008

No. 28 Auburn
No. 11 Fani Chifchieva
No. 70 Alex Haney
No. 10 Alex Haney/Melissa Koning

2009

No. 35 Auburn
No. 15 Fani Chifchieva
No. 30 Alex Haney

2010

No. 58 Auburn
No. 31 Fani Chifchieva
No. 87 Paula Schippers/Myrthe Molenveld

2012

No. 73 Auburn

2013

No. 25 Auburn
No. 25 Pleun Burgmans
No. 19 Pleun Burgmans/Plamena Kurteva
No. 40 Jen Pfeifler/Jackie Kasler

2014

No. 27 Auburn
No. 49 Pleun Burgmans
No. 10 Pleun Burgmans/Emily Flickinger
No. 66 Michala Kucharova/Reka Muller
No. 73 Jen Pfeifler/Jackie Kasler

2015

No. 46 Auburn
No. 67 Pleun Burgmans
No. 10 Pleun Burgmans/Emily Flickinger

2016

No. 12 Auburn
No. 21 Andie Dikosavljevic
No. 39 Alizee Michaud
No. 69 Pleun Burgmans
No. 9 Pleun Burgmans/Alizee Michaud
No. 76 Pleun Burgmans/Paula de Man

2017

No. 14 Auburn
No. 22 Alizee Michaud
No. 38 Andie Dikosavljevic
No. 104 Taylor Russo
No. 15 Alizee Michaud/Taylor Russo
No. 63 Caroline Turner/Georgie Axon
No. 79 Andie Dikosavljevic/Alannah Griffin

2018

No. 24 Auburn
No. 61 Jaeda Daniel
No. 119 Alizee Michaud

2019

No. 62 Auburn
No. 94 Jaeda Daniel
No. 45 Sophia Graver/Taylor Russo
No. 89 Jaeda Daniel/Madeline Meredith

2020

No. 42 Auburn
No. 64 Selin Ovunc
No. 83 Taylor Russo
No. 14 Selin Ovunc/Taylor Russo

2021

No. 22 Auburn
No. 50 Selin Ovunc
No. 67 Carolyn Ansari
No. 24 Selin Ovunc/Taylor Russo
No. 76 Georgie Axon/Adeline Flach

2022

No. 14 Auburn
No. 41 Selin Ovunc
No. 83 Ariana Arseneault
No. 119 Carolyn Ansari
No. 14 Selin Ovunc/Ariana Arseneault

AUBURN IN ITA FINAL TOP 100

1994	#34
1995	#23
1996	#21
1999	#53
2000	#72
2002	#31
2004	#60
2007	#29
2008	#28
2009	#35
2010	#58
2012	#73
2013	#25
2014	#27
2015	#46
2016	#12
2017	#14
2018	#24
2019	#62
2020	#42
2021	#22
2022	#14
2023	#17

ITA AWARDS AND HONORS

2002	Southern Region Coach of the Year	Troy Porco
2003	Southern Region Assistant Coach of the Year	Kelly Brown
2007	Southern Region Rookie of the Year	Fani Chifchieva
2009	Southern Region Player of the Year	Alex Haney
2010	Southern Region Player of the Year	Fani Chifchieva
2013	Southern Region Rookie of the Year	Pleun Burgmans
2016	National Assistant Coach of the Year	Chris Hooshyar
2016	Southern Region Coach of the Year	Lauren Spencer
2016	Southern Region Player of the Year	Pleun Burgmans
2017	Southern Region Coach of the Year	Lauren Spencer
2017	Southern Region Award for Sportsmanship	Andie Dikosavljevic
2018	Southern Region Assistant Coach of the Year	Chris Hooshyar
2020	Southern Region Player of the Year	Taylor Russo
2020	Southern Region Rookie of the Year	Selin Ovunc
2021	Southern Region Award for Sportsmanship	Taylor Russo
2021	Southern Region Assistant Coach of the Year	Raquel Atawo
2022	Southern Region Assistant Coach of the Year	Megan Falcon
2022	Southern Region Coach of the Year	Caroline Lilley

ALL-TIME ROSTER

A

Acker, Gigi	1980, 81, 82, 83
Adams, Kelly	2006, 07
Almagnò, Tori	2005
Altman, Lucy	1997, 98, 99
Anderson, Lis	1991
Ansari, Carolyn	2020, 21, 22, 23
Arbet, Ann	1989
Arechavaleta, Maria	2011
Arseneault, Ariana	2022, 23
Astakhova, Anastasia	2021, 22, 23
Axon, Georgie	2017, 18, 19, 20, 21, 22
Azran, Shir	2021

B

Bailey, Donna	1981
Balcomb, Carrie	1979, 80, 81
Bankston, Tracy	1991
Bates, Michel	1983, 84, 85
Bennett, Delany Jade	2023
Bercik, Petra	2002, 03, 04, 05
Beadman, Michelle	1989, 90
Beem, Susan	1979, 81
Beelen, Gaby	2008
Bennett, Olivia	2011, 12
Blanno, Sofia	2016
Boban, Judith	1999
Bobby, Andrea	1980, 81, 82, 83
Bolvig, Kristin	1985
Bowen, Annabella	2019
Brannon, Kim	1986, 87, 88, 89
Branyon, Laura	1979, 80
Brock, Kathleen	97
Bryan, Kate	1994, 95, 96, 97
Burgmans, Pleun	2013, 14, 15, 16
Bybee, Heather	2007, 08, 09

C

Callahan, Kristin	1984, 85, 86
Canahan, Kristin	1998, 99
Carnicella, Kaitlyn	2023
Chappell, Whitney	2006, 07, 08, 09
Chen, Yu	2019, 20, 21, 22
Chifchieva, Fani	2007, 08, 09, 10
Clancy, Moira	1983
Cohen, Taylor	2011, 12
Cowart, Ashley	2003, 04, 05
Crawford, Jacky	2001

D

Daniel, Jaeda	2018, 19
DeSpain, Ali	2023
Donald, Missy	1991
Djuranovic, Dunja	2008
de Man, Paula	2014, 15, 16
Dikosavljevic, Andie	2015, 16, 17, 18

E

Echert, Lisa	1979
Edwards, Summa	1998, 99
Epps, Evan	2004

F

Filatova, Olga	1996
Farmer, Elizabeth	1991

Fitzmorris, Tara	1997, 98
Flach, Adeline	2021, 22, 23
Flickinger, Emily	2012, 13, 14, 15
Funderburk, Anna	1991, 92, 93

G

Gandolfo, Donna	1980, 81
Gauthier, Jenny	1986
Gladding, Kasey	1992, 93, 94, 95
Graver, Sophia	2019
Gray, Erin	2003, 04, 05
Green, Jenny	1987
Greenburg, Katie	2001
Griffin, Alannah	2016, 17, 18, 19
Griswold, Elizabeth	1998, 99

H

Hardling, Maria	1992, 93, 94, 95
Haney, Alex	2006, 07, 08, 09
Hastenrath, Jil	2007, 08, 09, 10
Higgins, Dot	1981

I

Illarianova, Katia	2000, 01, 02
Irwin, Sandi	1986, 87, 88, 89

J

Janska, Martina	2001, 02, 03, 04
Jardim, Simone	1999

K

Kasler, Jacqueline	2011, 12, 13, 14
Koning, Melissa	2007, 08, 09
Kozlowski, Carolyn	1998, 99
Kozlowski, Kimberly	1993, 94, 95, 96
Kucharova, Michala	2013, 2014, 15
Kurteva, Plamena	2010, 11, 12, 13

L

LaGrange, Alexandra	1995, 96, 97, 98
Larson, Leslie	1988, 89, 90, 91
Larson, Mary Beth	1983, 84, 85, 86
Levant, Lauren	2012, 13
Lewis, Mary Katherine	2015, 17, 18

M

Maurer, Carolina	1999, 2000, 01, 02
Meredith, Madeline	2018, 19, 20, 21, 22
Merono, Pilar	1999
Michaud, Alizee	2016, 17, 18
Mieres, Diana	1991, 92, 93, 94
Mieres, Sandra	1990, 91, 92, 93
Mieres, Sharon	1994, 95, 96, 97
Minor, Mitzi	1979, 80
Molenveld, Myrthe	2010
Muller, Reka	2014, 15, 16

O

Okutoyi, Angella	2023
Olesen, Kim	1987, 88
Overton, Kristin	1988, 89
Ovunc, Selin	2020, 21, 22, 23

P

Paul, Jenny	2003, 04
-------------	----------

Peaden, Nancy	2004, 05
Perera, Manisha	1981, 82, 83
Pfeiffer, Jen	2012, 13, 14, 15
Phillips, Renee	1981, 82, 83, 84
Piski, Andrea	1999, 2000, 01

R

Ramirez, Carolina	2001, 02, 03, 04
Roberts, Courtney	1992
Rosenbaum, Heidi	1984, 85
Rosenbrock, Isabel	2003, 04, 05
Russo, Taylor	2017, 18, 19, 20, 21

S

Saurborn, Liz	2001, 02, 03, 04
Scheufler, Caraline	2020
Schippers, Paulina	2010, 11, 12, 13
Schmidt, Kim	1979
Schreimann, Taylor	2009, 10, 11, 12
Sharp, Robin	1985, 86, 87, 88
Sigmundstad, Mette	1996
Smirnova, Nadia	1993, 94, 95, 96
Smith, Nancy	1992, 93, 94
Snyder, Kathy	1979
Song, Lindsay	2019, 20, 21
Steffen, Claudia	1984, 85, 86, 87
Stewart, Heidii	1996, 97, 98, 99
Suitor, Sarah	2002, 03, 04, 05
Sutherland, Becky	1979, 80

T

Thompson, Caroline	1998, 99
Thornton, Caroline	2010, 11
Tooke, Tracy	1982, 83
Turner, Caroline	2016, 17, 18, 19

U

Umphrey, Joe Ann	1979, 80
------------------	----------

V

Voges, Rhonda	1979
Vukadinovic, Daniela	2009, 10

W

Watt, Sue	1986, 87, 88, 89
Wilkey, Anne	1980, 81, 82, 83
Wilson, Reecia	1985
Woods, Mary Jo	1982
Worrell, Suzie	1979