

Head Coach Jeff Lebo

Players' coach. Intelligent. Great communicator. Hard-working. Family man. Heart. Tremendous Xs-and-Os. Superb. Outstanding basketball coach.

Those are just a few of the many words that have been used to describe Auburn fifth-year head coach Jeff Lebo.

Without a single senior on the roster, he led Auburn to a 17-15 (7-9 SEC) record in 2006-07, the Tigers' first winning season since 2003. Auburn came within 40 seconds of winning the SEC Western Division title as it had the ball and up by three points at Ole Miss in the regular season finale. In tying for third in the SEC West, Auburn and its seven SEC wins were also the most since winning eight in 2003.

Auburn swept Alabama for the first time since 1999, and the first time in history when Alabama was nationally-ranked both times. The win in Tuscaloosa was the Tigers' second in the last 23 years.

Auburn defeated teams that were ranked throughout the season in No. 12 Alabama, No. 22 Tennessee, No. 25 Alabama and ranked Vanderbilt and previously ranked LSU.

It also marked the first time in 12 seasons that Auburn defeated ranked teams two-straight times in its 83-80 upset over No. 22 Tennessee followed up with an 81-57 victory over No. 12 Alabama.

Lebo began his reclamation project at Auburn in leading the Tigers to an over-achieving 14-17 (4-12 SEC) record in 2004-05, his first season at Auburn in turning around a decimated

Tiger program. Four starters and nine lettermen were lost from the 2003-04 Tigers that finished one spot out of the cellar in the 12-team SEC at 14-14 (5-11 SEC).

The Tigers, who were a consensus last-place pick in the SEC, tied for 10th in the league in 2004-05. They equalled the win total from the previous season with far less talent and had the shortest Div. I team in America with only one player taller than 6-foot-6.

In Lebo's first game as head coach at Auburn, the Tigers claimed a thrilling 80-78 upset on the road against Temple and legendary head coach John Chaney. A perfect 5-0 start was halted with a narrow 89-87 loss to 24th-ranked Virginia in Richmond.

Other highlights included a 51-point turnaround as Auburn avenged a 90-53 thrashing at No. 18 Mississippi State in the SEC opener for a 90-76 win over the defending SEC Champion Bulldogs in Beard-Eaves-Memorial Coliseum. The Tigers had a 49-point turnaround as they were annihilated at Arkansas 95-59, but defeated the Razorbacks 77-64 in Auburn on Senior Day.

Auburn advanced to the SEC Tournament quarterfinals as it upset a Vanderbilt team that was on the NCAA Tournament bubble in the first round. The Tigers avenged a 67-43 home loss to the Commodores three weeks prior. A 74-71 SEC road win at South Carolina was huge as the Gamecocks, who defeated No. 3 Kentucky the following game, were fighting for a NCAA Tournament bid.

In Lebo's second season, the Tigers went from the smallest team in Div. I to the youngest in 2005-06. Auburn, with only one senior in Ronny LeMelle on its roster, started four freshmen eight times. Purdue was the only other team to start a rookie quartet, and the Boilermakers only did it once.

A consensus last place pick, Auburn went 12-16 (4-12 SEC) to tie for fifth in the SEC's Western Division. The Tigers defeated Temple, swept Ole Miss and nearly knocked off a pair of Final Four teams, losing to LSU 65-61 and at eventual National Champion Florida 69-57.

Losing its entire frontline in a pair of 6-foot-7 junior forwards in Josh Dollard for the whole season and Korvotney Barber from Dec. 29 on as well as 7-foot-1



freshman center Boubacar Sylla from Nov. 13 on in the 2007-08 season, the Tigers went 14-16 (4-12 SEC). Auburn players missed a combined 4733 minutes on the season.

The Tigers did sweep NIT finalist Ole Miss and defeated Alabama 88-76 on CBS on Feb. 24. The Rebels were ranked 15th nationally when the Tigers beat them on Jan. 19.

Lebo was named the Tigers' 19th head basketball coach on April 8, 2004. In his 20 years as a Div. I head coach, assistant coach and player, the 42-year-old Lebo has won wherever he has been. To his credit are nine conference championships ... two in six years as a head coach, four as an assistant coach and three as a player.

He has been a part of two Southeastern Conference Championships at different schools, three Atlantic Coast Conference Championships, two Ohio Valley Conference Championships and a pair of Southern Conference titles.

In six years as a collegiate head coach prior to Auburn, Lebo turned around two programs at Tennessee-Chattanooga and Tennessee Tech en route to a 115-63 career record, an average of 19.2 wins per season. A pair of Ohio Valley Conference Championships at Tennessee Tech



Auburn's Jeff Lebo with North Carolina head coach Roy Williams (l) and UNC's former coach Dean Smith.

Jeff Lebo • Career Highlights

- 22-year coaching and playing record of 443-234 (.654)
- 10-year head coaching record: 172-127 (.575)
- Dist. VII NABC Coach of the Year (2002)
- Three-time Ohio Valley Conference Coach of the Year (2000, 2001, 2002)
- 2002 Tennessee Coach of the Year, Tennessee Sports Writers Association
- 2002 NIT Quarterfinals
- Nine NCAA Tournament appearances (five as a coach, four as a player)

- Two Ohio Valley Conference Championships (2001, 2002)
- Two SEC Championships (1993, 1997)
- Two Southern Conference Championships (1991, 1992)
- played with NBA's San Antonio Spurs (1989-90)
- All-ACC 2nd-team (1988)
- All-ACC Tournament (1987, 1989)
- Four-year record of 116-25 (.823) at North Carolina from 1985-98

- Two ACC Championships at North Carolina (1987, 1988)
- Two NCAA Tournament Elite 8 appearances
- Two NCAA Tournament Sweet 16 appearances
- Patterson Award for recipient for the top student-athlete at North Carolina
- Member of the 1987 U.S. Pan-Am team
- First-team All-American at Carlisle (Pa.) High School



A.D. Jay Jacobs (l) and Jeff Lebo (r) with Auburn's Charles Barkley at the 2006 Basketball Hall of Fame Induction.

and coming within one game of the NIT Final Four with Tech dot Lebo's ledger.

Lebo has accumulated a very impressive 144-100 record (.590) in his last eight seasons as a head coach ... an average of 18.0 victories a season.

He was an assistant coach for eight years at South Carolina, Vanderbilt and East Tennessee State after playing the 1989-90 season with the NBA's San Antonio Spurs.

As an All-ACC point guard and four-year starter at the University of North Carolina from 1986-89, Lebo helped lead the Tar Heels to a 116-25 record and four trips to the NCAA Tournament, two to the Elite 8 and a pair of Sweet 16 appearances. The Tar Heels won two ACC Regular Season Championships and one ACC Tournament Championship with Lebo, who was a two-time All-ACC Tournament selection and an All-ACC second-team pick in 1988.

In high school, Lebo led Carlisle (Pa.) High to a 108-9 record in his four-year career, culminating with the 1985 Pennsylvania State Class 4A Championship as a senior. He earned All-America honors and was a four-time all-state selection.

His father, Dave, who has been an assistant under his son during his entire tenure as a head coach, was the head coach at Carlisle where the school honored him by naming the court after him in a ceremony Dec. 3, 2005.

When Lebo was named head coach at Tennessee-Chattanooga in April 2002, he inherited a team without a returning starter and without a signee for the upcoming season.

He transformed the Mocs into a Southern

Conference championship contender in just one season, leading UTC to a 21-9 record in 2002-03, the school's first 20-win season in six years.

The Mocs gave Lebo a 17-point victory over Furman in his SoCon debut and defeated NCAA Tournament participant Weber State 75-63 in the Dr. Pepper Classic title game. Perhaps his biggest accomplishment was the school's first two-game series sweep over the College of Charleston.

Lebo led the Mocs to a 19-11 mark in 2003-04 and came within one game of the NCAA Tournament for the second-straight season, losing to East Tennessee State in the championship game each year. He earned his 100th-coaching victory in a 93-86 win at Tennessee State Dec. 1, 2003, in only his 153rd game as a head coach.

Lebo became one of the youngest collegiate head coaches in the nation when he began his coaching career in 1998-99 at Tennessee Tech, inheriting a program that went a woeful 9-21 the year before and had a losing record in four of the previous five seasons. However, he would win two Ohio Valley Conference Championships in his four years at the school.

At the age of 32, Lebo guided the undermanned Golden Eagles to a 12-15 mark in his first season in 1998-99. The following year, Tennessee Tech had the most wins in 10 years improving to 16-12, earning Lebo OVC Coach of the Year honors.

In only his third season in 2000-01, Lebo led Tennessee Tech to a 20-9 record and the first of back-to-back OVC Championships. It marked the most wins for the school in 54 years, going all the way back to 1946-47. It was also Tech's first league title in 16 years since 1984-85, and Lebo garnered his second-straight OVC Coach of the Year honor.

Lebo earned his third-straight OVC Coach of the Year honor as Tech mastered a school record 27-7 mark overall and a 15-1 league record in 2001-02 en route to a second-consecutive OVC Championship. The Golden Eagles came within one game of the NIT Final Four, losing at eventual champion Memphis, 79-73. He was tabbed as the District VII NABC Coach of the Year.

Tennessee Tech boasted a season-best 12-game winning streak, including 10-straight conference victories. After losing at Murray State 70-69 in the OVC Tournament championship game, the Golden Eagles defeated Georgia State, Dayton and Yale in the NIT. He was named the Tennessee Coach of the Year.

Lebo began his coaching career as an assistant at East Tennessee State under Alan LeForce for two seasons from 1990-92. The Buccaneers made two-straight NCAA Tournament appearances, advancing to the second round in 1992 after the 14th-seeded Bucs upset No. 3-seeded Arizona 87-80.

ETSU, which was eliminated from the NCAA Tournament by eventual National runner-up

Jeff Lebo Quick Sketch

PERSONAL DATA: Born October 5, 1966, in Enola, Pa.; married to the former Melissa Mills of Williamston, N.C., on August 8, 1992, and they have two daughters, Addison (13) and Mills (10) and a son, Creighton (6).

YEARS AT AUBURN: Fifth. Became head coach on April 8, 2004, from Tennessee-Chattanooga.

EDUCATION: Graduated from Carlisle (Pa.) H.S. in 1985; B.S. in Business Administration from North Carolina in 1989.

Michigan and the Fab Five, 102-90, went 24-7 and won both the 1992 Southern Conference Regular Season and Tournament Championships. The Bucs went 28-5 in 1990-91, lost to Iowa 76-73 in the NCAA Tournament and won both the SoCon Regular Season and Tournament Championships.

Lebo started the first of six seasons as an assistant under coach Eddie Fogler with a SEC Championship, a NCAA Tournament Sweet 16 appearance and a 28-6 record at Vanderbilt in 1992-93. The Commodores went 14-2 in the SEC for only their third league title in history and their first since 1974. Vanderbilt defeated Boise State and Illinois in the NCAA Tournament before losing to Temple in the Sweet 16.

Lebo then followed Fogler to South Carolina where he spent five seasons and helped lead the Gamecocks to their only SEC Championship in 1997 and a pair of NCAA Tournament appearances.

After turning the South Carolina program around from 9-19 and 10-17 records the first two seasons, Fogler and Lebo led the Gamecocks to an average of 22 wins over the next three years. USC went 19-12 and reached the NIT third round in 1995-96, went 24-8 and won the SEC Championship in 1996-97 and was 23-8 in 1997-98, reaching the NCAA Tournament for the second-consecutive season.

After playing for his father, Dave, at Carlisle (Pa.) High School, Lebo was coached at North Carolina by the legendary Dean Smith, the all-time leader in coaching victories with 879. Lebo's college teammates included NBA greats Kenny Smith of the World Champion Houston Rockets and now a broadcaster on TNT and Rick Fox, formerly of the World Champion Los Angeles Lakers.

In addition to all of his success at North Carolina, Lebo left the Tar Heels with single-season records for free throw shooting (.878 in 1987-88) and 3-point shooting (.462 in 1987-88). He still ranks among the program's top 20 in career scoring with 1,567 points and is sixth in career assists with 580.

A 1989 graduate of the University of North Carolina with a degree in Business Administration, Lebo was presented the school's Patterson Award, given to UNC's top student-athlete for academic achievement.

Lebo has developed a teaching video cassette titled "Half-Court Trapping and Double-Teaming the Post."

Lebo was born Oct. 5, 1966, in Enola, Pa. He married the former Melissa Mills of Williamston, N.C., on Aug. 8, 1992. The couple has two daughters, Addison (13) and Mills (10) and a son, Creighton (6).

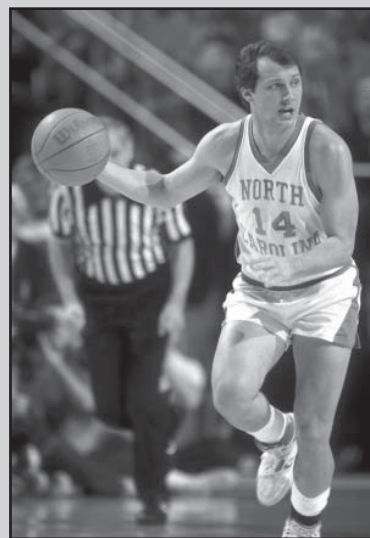


The Lebo Family: Jeff and Melissa with (l to r): Mills, Addison and Creighton.

Jeff Lebo in the North Carolina Record Book

- **Highest Team Scoring Avg. per Game in North Carolina history**
1. 91.3 in 1986-87
- **Most Consecutive Free Throws**
1. 41, Jan. 3-Mar. 12, 1989
- **Assists, Single-game**
graduated: 1. 17 vs. UT-Chattanooga, current: 2nd (11-18-88)
- **Free Throw Pct., Season**
graduated: 1. .878 (86-of-98) in 1987-88 current: 2nd
- **Free Throw Pct., Career**
graduated: 1. .839 (308-of-367), 1985-89 current: 3rd at UNC, 14th in ACC history
- **3-Point Field Goal Pct., Career**
graduated: 1. .428 (211-of-493), 1985-89 current: 2nd at UNC, 6th in ACC history

- **3-Point Field Goal Pct., Season**
graduated: 1. .464 (78-of-168), 1987-88
2. .450 (67-of-149), 1986-87
current: 3rd and 5th
- **3-Point Field Goals, Game**
graduated: 1. 7 v. Richmond (11-28-87)
current: t-7th
- **3-Pointers Made, Career**
graduated: 1. 211 (1985-89)
current: 4th
- **Assists, Career**
graduated: 4. 4.4 avg, 580 (1985-89)
current: t-9th
- **Scoring, Career**
graduated: 15. 1,567 points (1985-89)
current: 22nd



Jeff Lebo • North Carolina • All-ACC

Jeff Lebo's All-time Record

Head Coaching Record

Year	School	Record	Pct.	Conf. (Finish)	Postseason/Notes
1998-99	Tennessee Tech	12-15	.444	8-10 (8th)	
1999-2000	Tennessee Tech	16-12	.571	11-7 (5th)	OVC Coach of the Year
2000-01	Tennessee Tech	20-9	.689	13-3 (Champions)	OVC Coach of the Year
2001-02	Tennessee Tech	27-7	.794	15-1 (Champions)	OVC & TN Coach of Year/NIT(3rd rd.)
2002-03	Tennessee-Chattanooga	21-9	.700	11-5 (t1st, South)	SoCon co-South Div. Champs
2003-04	Tennessee-Chattanooga	19-11	.633	10-6 (2nd, North)	
2004-05	Auburn	14-17	.452	4-12 (t-5th, Western)	
2005-06	Auburn	12-16	.429	4-12 (t-5th, Western)	
2006-07	Auburn	17-15	.531	7-9 (t-3rd, Western)	
2007-08	Auburn	14-16	.467	4-12 (6th, Western)	
Total		172-127	.575	87-72 (.547)	

Assistant Coaching Record

Year	School	Record	Pct.	Conf. (Finish)	Postseason/Notes
1990-91	East Tennessee State	28-5	.848	11-3 (Champions)	NCAA (First Round)
1991-92	East Tennessee State	24-7	.774	12-2 (Champions)	NCAA (Second Round)
1992-93	Vanderbilt	28-6	.824	14-2 (Champions)	NCAA (Sweet 16)
1993-94	South Carolina	9-19	.321	4-12 (5th, Eastern)	
1994-95	South Carolina	10-17	.370	5-11 (5th, Eastern)	
1995-96	South Carolina	19-12	.613	8-8 (3rd, Eastern)	NIT (Quarterfinals)
1996-97	South Carolina	24-8	.750	15-1 (Champions)	NCAA (First Round)
1997-98	South Carolina	23-8	.742	11-5 (2nd, Eastern)	NCAA (First Round)
Total		165-82	.668	80-44 (.645)	

Collegiate Playing Record

1985-86	North Carolina	28-6	.824	10-4 (3rd)	NCAA (Sweet 16)
1986-87	North Carolina	32-4	.889	14-0 (Champions)	NCAA (Elite 8), All-ACC Tournament
1987-88	North Carolina	27-7	.794	11-3 (Champions)	NCAA (Elite 8), All-ACC 2nd-team
1988-89	North Carolina	29-8	.784	9-5 (t-2nd)	NCAA (Sweet 16), All-ACC Tournament
Total		116-25	.822	44-12 (.786)	

Head Coaching Totals (10 years): 172-127 (.575)

- Tennessee Tech (four years): 75-43 (.636)
- Tennessee-Chattanooga (two years): 40-20 (.667)
- Auburn (four years): 57-64 (.471)

Assistant Coaching Totals (eight years): 165-82 (.668)

- East Tennessee State (two years): 52-12 (.813)
- Vanderbilt (one year): 28-6 (.824)
- South Carolina (five years): 85-64 (.570)

22-year Div. I Coaching, Playing Record: 443-234 (.654)

What They are Saying About ... Jeff Lebo

Larry Brown Head Coach Charlotte Bobcats



"I told our people when Roy Williams became a head coach that he would be the next up and coming young coach in the country. I think the same thing about Jeff Lebo."

Eddie Fogler Former Head Coach/ Television Broadcaster



"I think Auburn got a rising star in Jeff Lebo. Every place he's been, each time he's had tremendous success as he built programs. He still was winning even as he was building programs. I like the way Jeff's teams play."

"Anyone who saw Jeff Lebo play, understood what it took to be a great player through fundamentals and an understanding of the game. Anyone who has seen his teams play, understands that a team can control a game and win through strong fundamentals. He has been able to accomplish what he has accomplished through his knowledge of the game. He is a great teacher of the game but can also go out there and show the players how it is supposed to be done. He truly cares about the student-athlete."

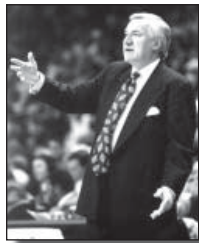
Rick Fox Formerly of Los Angeles Lakers



"When I was in school Jeff was really an extension of Coach Dean Smith on the floor for us. Being the son of a head coach and a point guard in the North Carolina system, he was a great basketball mind at an early age."

"I think it is definitely evident that he has developed into a great basketball coach, and this doesn't surprise me one bit. There must be a lot of smart people at Auburn to hire that man."

Dean Smith Former Head Coach North Carolina



"Not only was Jeff an outstanding student and a great basketball player here at Chapel Hill, but a marvelous teacher as well. At this young age, he has demonstrated to the USA basketball community that he is among the top 20 coaches in the NCAA. His teams play hard, play unselfishly and execute offensively and defensively. I am excited about his success and love watching his teams play."



Kenny Smith Formerly of Houston Rockets & NBA on TNT Announcer



"One of the things Jeff has been able to bring is he has a great understanding of what it takes to win, and he has been around it all his life. From grade school to high school to college to now, he has always been a winner. The only way to be taught is if you've done it, and Jeff understands how to do it."

"He always carried a diligence. As a player, he was always diligent in being at the right place at the right time ... in practice and in his preparation for the game."

"As a player, you can always look in the mirror at the end of the day and say you have given your best effort because Jeff has always done that. Having played and knowing what it takes, that's a big advantage."

Roy Williams Head Coach North Carolina



"Jeff Lebo is one of the truly great young coaches in the game ... I thought he was a coach on the floor, and as a coach, he has taken it to a new level."

Year-by-Year With Jeff Lebo

1985-86
**North Carolina (player)
(28-6, 10-4 ACC)**

		NC Opp.	
N24	UCLA (2,-)	H	W 107 70
N26	Iona (2,-)	H	W 110 67
N29	Missouri (1,-)	N1	W 84 63
N30	Purdue (1,-)	N1	W 73 62
D1	UNLV (1,-)	N1	W 65 60
D7	Rutgers (1,-)	N2	W 114 71
D14	Ohio Univ. (1,-)	H	W 99 57
D17	Jacksonville (1,-)	A	W 69 65
D20	Stanford (1,-)	H	W 89 55
D22	The Citadel (1,-)	N3	W 104 51
D27	Manhattan (1,-)	N4	W 129 45
D28	Brown (1,-)	N4	W 115 63
D31	Florida State (1,-)	N3	W 109 64
J4	N.C. State (1,-)	H	W 90 79
J9	Fordham (1,-)	N5	W 92 68
J11	Wake Forest (1,-)	A2	W 89 65
J14	Maryland (1,-)	A	W 71 67
J18	Duke (1,3)	H	W 95 92
J19	Marquette (1,-)	A	W 66 64
J25	Georgia Tech (1,4)	H	W 85 77
J26	Notre Dame (1,16)	H	W 73 61
J30	Virginia (1,-)	A	L 73 86
F1	Clemson (1,-)	H	W 85 67
F4	Ga. Tech (1,2) (ot)	A	W 78 77
F8	Wake Forest (1,-)	H	W 91 62
F12	Clemson (1,-)	A	W 79 64
F20	Maryland (1,-) (ot)	H	L 72 77
F23	N.C. State (1,20)	A	L 65 76
F26	Virginia (3,-)	H	W 85 79
M2	Duke (3,1)	A	L 74 82
M7	Maryland (4,-)	N6	L 75 85
M13	Utah (8,-)	N7	W 84 72
M15	UAB (8,-)	N7	W 77 59
M20	Louisville (8,7)	N8	L 79 94
(N1) Great Alaska Shootout (Anchorage, AK)			
(A2) Greensboro, NC			
(N3) Charlotte, NC			
(N4) Orange Bowl Classic (Miami, FL)			
(N5) Madison Square Garden (NYC)			

1986-87
**North Carolina (player)
(32-4, 14-0 ACC • ACC Champions)**

		NC Opp.	
N28	Hawaii (1,-)	A1	W 98 78
N29	Hawaii Loa (1,-)	A1	W 118 80
D1	UCLA (1,-)	A	L 84 89
D3	Stetson	H	W 100 64
D6	Miami, Fla. (1,-)	H	W 122 77
D13	Jacksonville (5,-)	H	W 98 69
D20	Illinois (4,5)	H	W 90 77
D22	Furman (4,-)	N2	W 95 65
D27	Kansas State (4,-)	N3	W 81 62
D29	Purdue (4,2)	N4	W 94 81
D30	SMU (4,-) (ot)	A4	W 88 86
J3	La Salle (4,-)	A	W 79 72
J8	Maryland (3,-)	H	W 98 65
J10	Duke (3,17)	A	W 85 77
J14	Virginia (3,-)	A	W 95 80
J18	N.C. State (3,-)	H	W 96 78
J22	Wake Forest (2,-)	A5	W 79 53
J24	Georgia Tech (2,-)	H	W 92 55
J28	Clemson (1,14)	A	W 108 99
F1	Notre Dame (1,-)	A	L 58 60
F5	N.C. State (3,-)	A	W 96 79
F8	Virginia (3,-) (ot)	H	W 74 73
F11	Wake Forest (3,-)	H	W 94 85
F14	Maryland (3,-)	A	W 93 86
F15	Marquette (3,-)	H	W 83 74
F18	East Tenn. State (3,-)	H	W 118 65
F21	Clemson (3,10)	H	W 96 80
F26	Duke (2,17)	H	W 77 71
M1	Georgia Tech (2,-)	A	W 92 76
M6	Maryland (2,-)	N6	W 82 63

M7	Virginia (2,-) (2ot)	N6	W 84 82
M8	N.C. State (2,-)	N6	L 67 68
M12	Pennsylvania (2,-)	N7	W 113 82
M14	Michigan (2,-)	N7	W 109 97
M19	Notre Dame (2,18)	N8	W 74 68
M21	Syracuse (2,10)	N8	L 75 79
(A1) Hawaii Thanksgiving Festival			
(N2) Charlotte, NC			
(N3) Kansas City, MO			
(N4) Dallas Morning News Classic (Dallas)			
(A5) Greensboro, NC			
(N6) ACC Tournament (Landover, MD)			
(N7) NCAA Tournament (Charlotte, NC)			
(N8) NCAA Tour. (E. Rutherford, NJ)			

1987-88
**North Carolina (player)
(27-7, 11-3 ACC • ACC Champions)**

		NC Opp.	
N21	Syracuse (3,1) (ot)	N1	W 96 93
N27	Southern Cal (3,-)	N2	W 82 77
N28	Richmond (3,-)	A2	W 87 76
D3	Stetson (1,-)	H	W 86 74
D5	Vanderbilt (1,-)	A	L 76 78
D12	SMU (5,-)	H	W 90 74
D17	The Citadel (4,-)	N3	W 98 74
D19	Illinois (4,-)	A	W 85 74
D30	Nevada (4,-)	A	W 115 91
J2	UCLA (4,-)	A	W 80 73
J6	Fordham (4,-) (ot)	N4	W 76 67
J9	La Salle (4,-)	H	W 96 82
J14	Maryland (2,-)	A	W 71 65
J16	Virginia (2,-)	H	W 87 62
J21	Duke (2,9)	H	L 69 70
J24	N.C. State (2,20)	A	W 77 73
J28	Wake Forest (3,-)	A4	L 80 83
J30	Georgia Tech (3,-)	H	W 73 71
F4	Clemson (8,-)	A	W 88 64
F11	N.C. State (6,16) (ot)	H	W 75 73
F14	Virginia (6,-)	A	W 64 58
F17	Wake Forest (5,-)	H	W 80 62
F20	Maryland (5,-)	H	W 74 73
F21	Temple (5,1)	H	L 66 83
F28	Clemson (9,-)	H	W 88 52
M2	Georgia Tech (6,13)	A	W 97 80
M6	Duke (6,9)	A	L 81 96
M11	Wake Forest (9,-)	N5	W 83 62
M12	Maryland (9,-)	N5	W 74 64
M13	Duke (9,8)	N5	L 61 65
M17	North Texas (7,-)	N6	W 83 65
M19	Loyola Mary. (7,15)	N6	W 123 97
M25	Michigan (7,10)	N7	W 78 69
M27	Arizona (7,2)	N7	L 52 70
(N1) Hall of Fame Game (Springfield, MA)			
(N2,A2) Central Fidelity Holiday Classic (Richmond, VA)			
(N3) Charlotte, NC			
(N4,A4) Greensboro, NC			
(N5) ACC Tournament (Greensboro, NC)			
(N6) NCAA Tour. (Salt Lake City, UT)			
(N7) NCAA Tournament (Seattle, WA)			

1988-89
**North Carolina (player)
(29-8, 9-5 ACC • ACC Tour. Champs)**

		NC Opp.	
N18	Chattanooga (6,-)	H1	W 111 84
N20	Georgia (6,-)	H1	W 99 91
N23	Missouri (5,13)	N1	L 81 91
N25	Indiana (5,20)	N1	W 106 92
N28	Stanford (5,-)	H	W 87 76
D2	Arizona (10,11)	N2	W 79 72
D3	Missouri (5,13)	N2	L 81 91
D7	Vanderbilt (8,-)	H	W 89 77
D10	Richmond (8,-)	N3	W 76 68
D19	UCLA (8,20)	H	W 104 78
D22	Towson State (8,-)	N4	W 102 74
D29	San Diego St. (7,-)	A	W 103 92
J3	Pepperdine (7,-)	A	W 102 80

J5	DePaul (6,-)	A	W 87 67
J7	Iowa (6,-)	H	L 97 98
J11	Maryland (8,-)	H	W 88 72
J15	Virginia (8,-)	A	L 83 106
J18	Duke (13,1)	A	W 91 71
J21	N.C. State (13,15)	H	W 84 81
J25	Wake Forest (7,-)	A3	W 88 74
J28	Georgia Tech (7,-)	H	W 92 85
F1	Clemson (3,-)	A	L 82 85
F9	N.C. State (6,17)	A	L 88 98
F12	Virginia (6,-)	H	W 85 67
F14	Old Dominion (6,-)	A	W 87 77
F16	Wake Forest (8,-)	H	W 99 76
F19	Maryland (8,-)	A	W 86 75
F21	Nevada (8,-)	H	W 109 86
F25	Clemson (5,-)	H	W 100 86
M1	Georgia Tech (5,-)	A	L 74 76
M5	Duke (5,9)	H	L 86 88
M10	Georgia Tech (9,-)	N5	W 77 62
M11	Maryland (9,-)	N5	W 88 58
M12	Duke (9,7)	N5	W 77 74
M17	Southern (5,-)	N6	W 93 79
M19	UCLA (5,-)	N6	W 88 81
M23	Michigan (5,10)	N7	L 87 92
(H1) Preseason NIT (Chapel Hill, NC)			
(N1) Preseason NIT (MSG, • New York)			
(N2) Diet Pepsi Tournament of Champions (Charlotte, NC)			
(N3,A3) Greensboro, NC			
(N4) Hershey Park, PA			
(N5) ACC Tour. (Omni • Atlanta, GA)			
(N6) NCAA Tour. (Omni • Atlanta, GA)			
(N7) NCAA Tournament (Lexington, KY)			

1990-91
**East Tennessee State (asst. coach)
(28-5, 11-3 SoCon • Champs)**

		ET Opp.	
N14	Brigham Young	A1	W 83 80
N16	Arizona (-,3)	A2	L 79 88
N26	George Mason	H	W 105 92
D1	Austin Peay	H	W 103 86
D3	Eckerd	H	W 112 48
D5	Wofford	H	W 92 50
D8	James Madison	A	W 68 65
D15	George Mason	A	W 96 86
D22	Cincinnati	A	W 90 79
D29	N.C. State	H	W 94 91
J5	Appalachian State	H	W 89 70
J10	Liberty	H	W 86 55
J12	Furman	H	W 95 79
J14	The Citadel	H	W 96 76
J19	Western Carolina	A	W 93 76
J21	UT-Chattanooga	A	L 74 76
J26	VMI	A	W 97 66
J28	Marshall	H	W 99 88
J30	Memphis State (ot)	A	W 105 102
F2	Appalachian State	A	W 94 78
F4	UT-Chattanooga	H	W 93 70
F7	Belmont Abbey	H	W 110 70
F9	The Citadel	A	W 101 69
F11	Furman	A	L 93 104
F14	Liberty	A	W 90 49
F16	UNC-Charlotte	A	W 96 80
F18	Western Carolina	H	W 102 78
F23	Marshall (ot)	A	L 103 107
F25	VMI	H	W 88 76
M1	The Citadel	N3	W 99 70
M2	UT-Chattanooga	N3	W 104 71
M3	Appalachian State	N3	W 101 82
M14	Iowa	N4	L 73 76
(A1) Preseason NIT (Provo, UT)			
(A2) Preseason NIT (Tucson, AZ)			
(N3) SoCon Tournament (Asheville, NC)			
(N4) NCAA Tour. (Minneapolis, MN)			

1991-92
**East Tennessee State (asst. coach)
(24-7, 12-2 SoCon • Champs)**

		ET Opp.	
N23	Wofford	H	W 89 70
N25	Tennessee	A	W 87 79
N30	Oral Roberts	H	W 109 93
D7	Southern Miss	H	W 87 76
D13	Northeast Louisiana	N1	W 86 77
D14	Oregon	N1	L 83 98
D21	Austin Peay	A	L 85 89
D23	James Madison	H	W 110 90
D27	Xavier	A	W 82 79
J4	Oral Roberts	A	L 83 85
J7	Southern Miss	A	L 63 79
J11	Furman	A	W 80 75
J13	The Citadel	A	W 79 60
J18	Western Carolina	H	W 102 66
J20	UT-Chattanooga	H	L 82 88
J25	VMI	A	W 80 68
J27	Marshall	A	W 72 66
F1	Appalachian State	H	W 81 75
F6	N.C. State (-,9)	A	W 72 66
F8	The Citadel	H	W 107 88
F10	Furman	H	L 94 103
F15	UT-Chattanooga	A	W 83 67
F17	Western Carolina	A	W 96 76
F22	Marshall	H	W 99 80
F24	VMI	H	W 92 84
F29	Appalachian State	A	W 70 63
M6	The Citadel	N2	W 89 55
M7	Appalachian State	N2	W 77 69
M8	UT-Chattanooga	N2	W 74 62
M20	Arizona (-,10)	N3	W 87 80
M22	Michigan (-,15)	N3	L 90 102
(N1) Tokyo, Japan			
(N2) SoCon Tournament (Asheville, NC)			
(N3) NCAA Tournament (Atlanta, GA)			

1992-93
**Vanderbilt (asst. coach)
(28-6, 14-2 SEC • SEC Champs)**

		VU Opp.	
N25	UAB	N1	W 81 63
N27	Illinois	N1	L 77 93
N28	Oregon	N1	W 83 81
D3	Northwestern	H	W 86 66
D5	Dayton	A	W 75 53
D9	Louisville (-,9)	H	W 90 88
D12	SMU	H	W 95 86
D18	N. Carolina A&T	N2	W 87 51
D19	Austin Peay	N2	W 116 71
D28	Air Force (24,-)	H3	W 95 50
D29	Bowl. Green (24,-)	H3	W 96 69
J2	Alabama (24,-)	H	W 76 73
J6	Memphis (18,-)	A	L 78 84
J9	Florida (18,-)	A	L 61 62
J13	Kentucky (-,1)	H	W 101 86
J16	Georgia	H	W 78 66
J20	Arkansas (19,8)	H	W 102 89
J27	Tennessee (11,-)	A	W 82 65
J30	Auburn (11,-)	A	W 73 70
F3	So. Carolina (11,-)	H	W 76 72
F6	Kentucky (11,2)	A	L 67 82
F10	Ole Miss (11,-)	H	W 89 59
F13	Middle TN St. (11,-)	H	W 81 51
F17	LSU (11,-)	A	W 87 66
F20	Florida (11,-)	H	W 82 64
F24	Georgia (8,-)	A	W 87 83
F27	Miss. State (8,-)	A	W 80 39
M2	Tennessee (7,-)	H	W 90 82
M6	So. Carolina (7,-)	A	W 77 73
M12	Alabama (5,-)	N4	W 76 59
M13	LSU (5,-)	N4	L 62 72
M18	Boise State (8,-)	N5	W 92 72
M20	Illinois (8,-)	N5	W 85 68
M26	Temple (8,-)	N6	L 59 67



(N1) Great Alaska Shootout (Anchorage)
 (N2) Acme Boot Classic
 (H3) Music City Inv. (Nashville, TN)
 (N4) SEC Tournament (Lexington, KY)
 (N5) NCAA Tour. (Salt Lake City, UT)
 (N6) NCAA Tournament (Seattle, WA)

1993-94
South Carolina (asst. coach)
(9-19, 4-12 SEC)

		SC Opp.
N27	Old Dominion	H L 80 94
D3	Brigham Young	N1 L 68 72
D4	George Washington	N1 L 71 77
D7	Georgia Southern	H W 91 78
D11	Coastal Carolina	H L 74 88
D20	So. Carolina St.(2ot)	H W 94 89
D22	Coll.ofCharleston(ot)	H W 65 53
D31	Providence	A L 69 88
J5	Alabama	H W 82 66
J8	Vanderbilt (-,22)	A L 83 97
J12	Campbell (ot)	H L 72 73
J15	Florida	H L 75 77
J19	Tennessee	H W 64 62
J22	Arkansas (-,3)	A L 53 79
J26	Kentucky (-,9)	A L 67 79
J29	Georgia	H L 85 96
F2	LSU	H L 71 77
F5	Ole Miss	A L 62 68
F9	Clemson	A W 91 88
F12	Vanderbilt	H L 91 96
F16	Auburn	A L 70 88
F19	Florida (-,17)	A L 64 88
F23	Mississippi State	H L 72 73
F26	Tennessee	A W 72 64
M2	Georgia	A L 69 72
M5	Kentucky (-,7)	H W 75 74
M10	Ole Miss	N2 W 80 57
M11	Florida (-,17)	N2 L 57 84

(N1) Tour. of Champions (Charlotte, NC)
 (N2) SEC Tournament (Memphis, TN)

1994-95
South Carolina (asst. coach)
(10-17, 5-11 SEC)

		SC Opp.
N25	UNC-Asheville	H W 68 66
N28	Old Dominion	A L 65 79
D2	North Carolina (-,2)	N1 L 58 95
D3	Temple	N1 L 44 49
D8	Clemson	H L 59 83
D20	Charleston Southern	H W 80 65
D22	South Carolina St.	H W 69 62
D31	Providence	H L 71 79
J3	Mississippi State	A L 56 71
J7	Kentucky (-8)	H L 55 80
J11	Tennessee	A L 57 61
J14	Alabama	A L 59 91
J18	Florida (-,24)	H L 59 71
J21	Arkansas (-,9)	H L 73 88
J26	Western Carolina	H W 90 68
J28	Georgia	H W 60 59
F1	Kentucky (-,6)	A L 72 90
F4	Vanderbilt	A W 76 74
F8	Ole Miss	H W 77 72
F11	Florida	A L 56 71
F15	Auburn	H L 78 80
F18	Vanderbilt (ot)	H L 83 91
F20	Campbell	H W 85 51
F25	Georgia	A L 56 66
M1	LSU	A W 69 62
M4	Tennessee	H W 66 50
M9	Auburn	N2 L 66 81

(N1) Tour. of Champions (Charlotte, NC)
 (N2) SEC Tournament (Atlanta, GA)

1995-96
South Carolina (asst. coach)
(19-12, 8-8 SEC)

		SC Opp.
N24	UNC-Greensboro	H W 82 64
N27	So. Carolina State	H W 92 70

D1	Stanford (-,16)	N1 L 70 82
D2	Tulane	N1 W 80 75
D6	Furman	H W 99 81
D9	Clemson	A L 58 72
D21	The Citadel	H W 112 61
D30	Radford	H W 90 69
J3	Kentucky (-,2)	H L 60 89
J6	Georgia (-,14)	H W 85 73
J10	Tennessee	A W 62 58
J13	Florida	A L 69 81
J17	Vanderbilt (ot)	H W 87 83
J20	Alabama	H W 90 67
J24	Mississippi State	H W 77 69
J27	Kentucky (-,2)	A L 57 89
J31	Wofford	H W 82 55
F3	Arkansas	A L 69 81
F7	Auburn	A L 73 84
F10	LSU	H W 106 68
F14	Georgia Southern	H W 57 45
F17	Vanderbilt	A L 97 107
F21	Florida	H W 80 75
F24	Ole Miss	A L 65 75
F28	Tennessee	H W 66 52
M2	Georgia	A L 73 88
M7	LSU	N2 W 85 76
M8	Arkansas	N2 L 58 80
M13	Davidson	H3 W 100 73
M18	Vanderbilt	H3 W 80 70
M20	Alabama	H3 L 67 68

(N1) Tour. of Champions (Charlotte, NC)
 (N2) SEC Tournament (New Orleans, LA)
 (H3) National Invitation Tournament

1996-97
South Carolina (asst. coach)
(24-8, 15-1 SEC • SEC Champs)

		SC Opp.
N25	Virginia	N1 L 70 93
N26	Chaminade	N1 W 64 55
N27	LSU	N1 W 74 68
D2	Wofford	H W 64 41
D6	UNC-Charlotte	N2 W 75 60
D7	No. Carolina (-,14)	N2 L 75 86
D17	Clemson (-,8)	H L 39 58
D19	UNC-Asheville	H L 74 80
D21	South Carolina St.	H W 79 60
D28	Charleston Southern	H L 81 85
D30	Furman	H W 100 62
J4	Auburn	H W 66 56
J8	Tennessee	H W 73 41
J11	Mississippi State	A W 73 65
J15	Florida	A W 80 79
J18	Georgia (-,21)	H W 82 71
J22	Alabama	A W 62 60
J25	Ole Miss (25,-)	H W 86 63
J29	Vanderbilt	A W 65 64
F1	LSU	A W 80 65
F4	Kentucky(ot) (19,3)	H W 84 79
F8	Florida (19,-)	H W 76 68
F12	Georgia (12,-)	A L 74 77
F15	Cincinnati (12,8)	A W 97 83
F18	Arkansas (9,-)	H W 78 65
F20	The Citadel (9,-)	A W 85 55
F22	Tennessee (9,-)	A W 69 58
F26	Vanderbilt (6,-)	H W 74 53
M2	Kentucky (6,3)	A W 72 66
M7	Alabama (4,-)	N3 W 72 61
M8	Georgia (4,24)	N3 L 63 78
M14	Coppin State (6,-)	N4 L 65 78

(N1) Maui Invitational (Lahaina, HI)
 (N2) Harris-Teeter Pepsi Chall.(Charlotte, NC)
 (N3) SEC Tournament (Memphis, TN)
 (N4) NCAA Tournament (Pittsburgh, PA)

1997-98
South Carolina (asst. coach)
(23-8, 11-5 SEC)

		SC Opp.
N14	Maryland (7,-)	H W 82 64
N21	The Citadel (6,-)	H W 77 58
D1	Belmont (5,-)	H W 72 61
D5	Virginia Tech (5,-)	N1 W 74 73

D6	UT-Chattanooga (5,-)N1W	67 55
D17	Clemson (6,-)	A L 58 63
D20	St. Joseph's (Pa.)(6,-)H	W 77 65
D23	S. Carolina St.(10,-)	H W 90 85
D30	Towson (11,-)	H W 65 55
J3	Ole Miss (11,16)	A L 54 73
J7	Vanderbilt (16,-)	H W 71 70
J10	LSU (16,-)	H W 70 53
J13	Kentucky (14,6)	A L 70 91
J18	Georgia (14,-)	A W 68 60
J21	Tennessee (14,-)	H W 81 51
J24	Auburn (14,-)	A W 61 56
J26	Furman (14,-)	A W 79 52
J28	Florida (13,-)	H W 74 72
F1	Cincinnati (13,18)	H W 67 65
F3	Vanderbilt (13,-)	A W 65 61
F7	Tennessee (13,-)	A L 69 70
F11	Alabama (15,-)	H W 74 63
F14	Miss. State (15,-)	H W 74 63
F18	Arkansas (13,16)	A L 88 96
F21	Florida (13,-)	A W 79 74
F24	Georgia (14,-)	H W 78 76
F28	Kentucky (14,7)	H L 57 69
M6	Florida (15,-)	N2 W 71 60
M7	Ole Miss (15,10)	N2 W 87 77
M8	Kentucky (15,7)	N2 L 56 86
M12	Richmond (14,-)	N3 L 61 62

(N1) Harris-Teeter Pepsi Chall. (Charlotte, NC)
 (N2) SEC Tournament (Atlanta, GA)
 (N4) NCAA Tour. (Washington, DC)

Head Coach Jeff Lebo

1998-99
Tennessee Tech
(12-15, 8-10 Ohio Valley)

		TT Opp.
N14	Belmont	H W 63 62
N19	Alabama	A L 53 79
N24	Ohio State	A L 51 78
N28	UNC-Asheville	A L 74 88
D5	Middle Tennessee St.A	L 56 67
D16	Evansville	A L 56 96
D19	Montreat	H W 87 54
D21	Bryan College	H W 93 68
D29	Idaho State	H W 68 54
J2	Murray State	A L 53 75
J4	Tennessee-Martin	A W 56 46
J7	Eastern Illinois	H L 63 68
J9	Southeast Missouri	H L 51 64
J12	Middle Tenn. St. (ot)H	W 75 69
J14	Austin Peay	A L 58 68
J16	Tennessee State	A L 64 74
J21	Eastern Kentucky	H W 70 42
J23	Morehead State	H W 82 66
J28	Murray State	H L 62 78
J30	Tennessee-Martin	H W 75 59
F4	Eastern Illinois	A L 70 74
F6	Southeast Missouri	A W 68 62
F11	Austin Peay	H W 75 63
F13	Tennessee State	H L 67 68
F18	Eastern Kentucky	A W 89 78
F20	Morehead State	A L 74 78
F23	Murray State	A1 L 61 96

(A1) OVC Tournament (Murray, KY)

1999-2000
Tennessee Tech
(16-12, 11-7 Ohio Valley)
OVC Coach of the Year

		TT Opp.
N20	Georgia Southern	A L 81 83
N22	Alabama	A L 72 91
N27	UNC-Asheville	H W 85 51
D2	Southeast Missouri	H L 79 84
D4	Eastern Illinois	H W 107 97
D6	Georgia Southern	H W 111 79
D12	North Carolina	A L 59 85
D20	Asbury College	H W 108 66
D28	Charleston Southern	A W 93 66
D29	Coll. of Charleston	A L 56 69
J6	Morehead State	A L 76 88

J8	Eastern Kentucky	A W 75 74
J11	Toccoa Falls	H W 131 57
J15	Middle Tenn. State	H W 78 66
J18	Southeast Missouri	A L 50 61
J20	Tennessee State	H W 88 70
J22	Austin Peay	H W 75 64
J27	Tennessee-Martin	A W 82 74
J29	Murray State	A L 74 75
F3	Morehead State	H W 90 83
F5	Eastern Kentucky	H W 91 66
F8	Eastern Illinois	A L 64 73
F12	Middle Tenn. State	A L 104 108
F17	Tennessee State	A W 77 66
F19	Austin Peay	A W 59 56
F24	Tennessee-Martin	H W 81 65
F26	Murray State	H L 63 64
F29	Middle Tenn. State	A1 L 70 87

(A1) OVC Tournament (Murfreesboro, TN)

2000-01
Tennessee Tech
(20-9, 13-3 Ohio Valley • Champs)
OVC Coach of the Year

		TT Opp.
N17	South Carolina	A W 73 67
N20	So. Carolina State	A L 52 72
N25	UT-Chattanooga	A L 64 74
N27	Loyola (Chicago)	A L 73 76
D2	Eastern Michigan	H W 86 70
D5	Iowa State	A L 74 89
D9	Southeast Missouri	A W 70 68
D17	Notre Dame	A L 68 82
D20	Asbury College	H W 110 52
J4	Eastern Kentucky	H W 109 85
J6	Morehead State	H W 86 71
J11	UT-Chattanooga	H W 70 60
J16	Eastern Illinois	H W 86 78
J18	Austin Peay	A W 86 74
J20	Tennessee State	A L 86 90
J25	Murray State	H W 85 80
J27	Tennessee-Martin	H W 92 84
J30	Covenant College	H W 111 75
F1	Morehead State	A L 67 74
F3	Eastern Kentucky	A W 69 63
F6	Southeast Missouri	H W 79 69
F8	Reinhardt College	H W 92 46
F12	Eastern Illinois	A L 71 80
F15	Austin Peay	H W 64 62
F17	Tennessee State	H W 81 72
F22	Murray State	A W 94 71
F24	Tennessee-Martin	A W 66 59
F27	Tennessee-Martin	H1 W 69 58
M2	Austin Peay	N2 L 63 83

(H1) OVC Tournament (Cookeville, TN)
 (N2) OVC Tournament (Nashville, TN)

2001-02
Tennessee Tech
(27-7, 15-1 Ohio Valley • Champs)
OVC Coach of the Year

		TT Opp.
N16	Tennessee	A L 63 72
N20	So. Carolina State	H W 79 65
N24	Bluefield College	H W 87 49
N27	Loyola (Chicago)	H W 87 76
D1	Eastern Michigan	A W 86 79
D4	Reinhardt College	H W 109 49
D8	New Mexico	A L 80 87
D17	Louisville	A L 66 70
D21	North Texas	A L 83 89
D29	Air Force	A W 64 44
J3	Eastern Kentucky	A W 90 61
J5	Morehead State	A W 81 78
J10	Murray State	H W 78 59
J17	Austin Peay State	A W 74 67
J21	Tennessee-Martin	H W 83 75
J24	Southeast Missouri	A W 75 62
J26	Tennessee State	A W 77 68
J31	Eastern Illinois	A W 85 68
F2	Southeast Missouri	H W 82 67
F4	Eastern Kentucky	H W 71 48



F7	Murray State	A L	56	75
F9	Tennessee-Martin	A W	75	68
F12	Morehead State	H W	75	68
F16	Austin Peay (2ot)	H W	86	84
F18	Tennessee State	H W	81	66
F23	Eastern Illinois	A W	85	68
F26	Southeast Missouri	H1 W	73	56
M1	Austin Peay	N2 W	86	77
M2	Murray State	N2 L	69	70
M13	Georgia State	H3 W	64	62
M15	Dayton	A4 W	68	59
M19	Yale	A5 W	80	61
M23	Memphis	A6 L	73	79

(H1) OVC Tournament (Cookeville, TN)
 (N2) OVC Tournament (Louisville, KY)
 (H3) National Inv. Tour. (Cookeville, TN)
 (A4) National Inv. Tour. (Dayton, OH)
 (A5) National Inv. Tour. (New Haven, CT)
 (A6) National Inv. Tour. (Memphis, TN)

2002-03
UT-Chattanooga
(21-8, 11-5 Southern Conf.)

TC Opp.				
N22	Samford	A W	68	66
N24	UAB	A L	81	92
N27	Tennessee Wesleyan	H W	93	47
N30	Bradley	A W	83	70
D2	Illinois State	A W	75	68
D14	Milligan	H W	107	57
D16	Furman	H W	66	49
D18	Kent State	H L	84	89
D21	Samford	H W	77	68
D29	Lipscomb	H1 W	87	78
D30	Weber State	H1 W	75	63
J2	Cincinnati	A L	51	81
J7	UNC-Greensboro	A2 W	72	56
J11	Coll. of Charleston	A W	78	68
J13	Davidson	H W	67	63
J18	Appalachian State	H L	99	107
J20	Wofford	A L	71	79
J25	Furman	A L	69	83
J27	The Citadel	H W	79	64
F1	East Tennessee State	H W	99	94
F3	Georgia Southern	H W	97	94
F8	The Citadel	A W	74	67
F10	Wofford	H L	71	79
F18	VMI	A W	77	52
F22	C. of Charleston(ot)	H W	79	78
F24	Georgia Southern	A L	97	99
M1	Western Carolina	A W	83	75
M6	Appalachian State	N3 W	98	67
M7	VMI	N3 W	77	58
M8	East Tennessee St.	N3 L	90	97

(H1) Dr. Pepper Classic (Chattanooga, TN)
 (A2) Greensboro Coliseum
 (N3) Southern Conference Tournament
 (North Charleston (S.C.) Coliseum)

2003-04
UT-Chattanooga
(19-11, 10-6 Southern Conf.)

TC Opp.				
N21	Kansas (-,6)	A L	76	90
N24	Oral Roberts	A W	81	79
N26	Tennessee Wesleyan	H W	124	58
N29	Emmanuel College	H W	125	78
D1	Tennessee State	A W	93	86
D11	Liberty	A L	69	85
D13	King College	H W	96	49
D16	Alabama	A L	72	76
D20	Elon	A L	70	88
D22	Tennessee State	H W	74	70
D29	Middle Tenn. State	H1 W	82	75
D30	La Salle	H1 L	65	71
J5	UNC-Greensboro	H W	76	70
J10	Davidson	H W	95	91
J12	Appalachian State	H L	77	94
J17	The Citadel	A W	73	49
J19	Coll. of Charleston	A L	76	83
J24	Western Carolina	H W	109	79
J26	Furman	A W	77	68

J31	Georgia Southern	H L	74	82
F7	Western Carolina	A W	73	71
F9	East Tennessee State	H L	80	82
F14	UNC-Greensboro	A W	87	74
F16	Elon	H W	62	57
F21	Appalachian State	A W	74	49
F24	East Tennessee State	A L	72	84
F28	Wofford	H W	90	79
M4	Coll. of Charleston	N3 W	89	78
M5	Ga. Southern (ot)	N3 W	90	87
M6	East Tennessee St.	N3 L	62	78

(H1) Dr. Pepper Classic (Chattanooga, TN)
 (A2) Greensboro Coliseum
 (N3) Southern Conference Tournament
 (North Charleston (S.C.) Coliseum)

2004-05
Auburn
(14-17, 4-12 SEC)

AU Opp.				
N19	Temple	A W	80	78
N22	Furman	H W	85	74
N24	Nicholls State	H W	92	78
N27	Louisiana Tech	H W	79	67
N30	Colorado State (ot)	H W	79	76
D3	Virginia (-,24)	N1 L	87	89
D5	Wofford	H L	78	85
D7	Coll. of Charleston	A W	76	61
D12	UNLV (ot)	H L	87	91
D20	Delaware	N2 W	74	46
D21	Middle Tenn. State	N2 W	79	74
D22	Toledo	N2 L	65	68
D30	Belmont	H W	73	69
J5	Miss. State (-,18)	A L	53	90
J12	Florida (ot)	H L	78	84
J15	Ole Miss	H L	72	79
J22	Arkansas	A L	59	95
J26	Alabama (-,14)	H L	55	60
J29	Tennessee	H W	62	59
F2	Ole Miss	A L	55	70
F5	Mississippi State	H W	90	76
F9	LSU	A L	69	90
F12	South Carolina	A W	74	71
F16	Vanderbilt	H L	43	67
F19	Georgia	A L	45	57
F23	Kentucky (-,5)	A L	73	81
F26	LSU	H L	64	77
M2	Alabama (-,19)	A L	53	94
M5	Arkansas	H W	77	64
M10	Vanderbilt	N3 W	77	73
M11	LSU	N3 L	58	89

(N1) Richmond, VA (Siegel Center)
 (N2) San Juan Shootout (Carolina, PR)
 (N3) SEC Tournament (Atlanta, GA)

2005-06
Auburn
(12-16, 4-12 SEC)

AU Opp.				
N20	Lipscomb	H W	69	54
N25	Gardner-Webb	H W	70	43
N28	Colorado State	A L	67	77
D1	McNeese State	H W	91	76
D4	Pittsburgh	A L	41	78
D14	Southeastern La.	H W	66	51
D18	Temple	H W	73	42
D22	Texas A&M	A L	67	72
D29	Winthrop	H W	64	62
D31	Jacksonville State	H W	87	83
J4	Southern Miss	H W	80	57
J7	Vanderbilt	A L	50	74
J11	Alabama	H L	52	56
J14	Florida (-,2)	A L	57	69
J21	Arkansas	H L	52	68
J24	Kentucky	H L	62	71
J28	Georgia	H W	66	65
F1	LSU (-,24)	A L	69	84
F4	Mississippi State	A L	53	71
F8	Ole Miss	H W	58	50
F11	Arkansas	A L	64	84
F15	Tennessee (-,8)	A L	89	105
F18	LSU (-,25)	H L	61	65
F22	Mississippi State	H W	75	71



Auburn head coach Jeff Lebo throws a roll of toilet paper as thousands gathered to roll Toomer's Corner following the Tigers 81-57 victory over No. 12 Alabama Jan. 23, 2007.

F25	Ole Miss	A W	58	54
M1	Alabama	A L	61	71
M4	South Carolina	H L	63	67
M9	Vanderbilt	N1 L	71	76

(N1) SEC Tournament (Gaylord Entertainment Center • Nashville, TN)

2006-07
Auburn
(17-15, 7-9 SEC)

AU Opp.				
N10	Troy	H W	71	68
N17	Winston-Salem St.	H W	95	62
N19	East Tenn. State	H1 W	64	58
N21	Miles College	H1 W	79	58
N24	Oklahoma State	N2 L	65	66
N25	Wisconsin (-,7)	N2 L	63	77
N28	Nicholls State (ot)	H W	92	87
N30	Louisiana-Monroe	H W	81	60
D3	Pittsburgh (-,2)	H L	66	74
D6	South Alabama	H W	82	71
D16	Wofford	H W	86	76
D19	Tennessee State	H W	86	59
D22	Texas A&M (-,13)	H L	58	87
D30	Charleston Southern	H W	69	53
J2	Southern Miss	A L	54	56
J6	Vanderbilt	H W	68	65
J10	Kentucky	A L	57	84
J13	LSU (-,13)	A L	63	65
J17	Tennessee (-,22)	H W	83	80
J20	Mississippi State	A L	76	87
J23	Alabama (-,12)	H W	81	57
J27	Florida (-,1)	H L	66	91
J31	South Carolina	A W	80	75
F3	Ole Miss	H L	59	82
F7	Arkansas	A L	57	65
F10	Mississippi State	H L	83	91
F17	Georgia	A L	79	86
F21	Arkansas	H W	67	59
F24	Alabama (-,25)	A W	86	77
F28	LSU	H W	80	68
M3	Ole Miss	A L	79	83
M8	Georgia	N3 L	65	80

2007-08
Auburn
(14-16, 4-12 SEC)

AU Opp.				
N9	Tulane	A L	62	77
N13	Kennesaw State	H W	74	62
N16	Alabama State	A W	63	60
N19	Charleston Southern	A1 W	89	59
D2	George Washington	N2 W	74	70
D5	West Virginia	N3 L	59	88

D15	Southern	N4 W	71	63
D19	Mercer	H W	68	59
D22	Alabama A&M	H W	67	56
D29	Towson	H W	79	59
J2	Texas A&M-C.C.	H W	76	58
J6	Xavier	H L	57	80
J10	Arkansas	H L	70	76
J12	Florida	A L	56	72
J16	LSU	A W	74	67
J19	Ole Miss (-,15)	H W	80	77
J22	Presbyterian College	H W	78	65
J26	Alabama	A L	77	97
J30	LSU	H L	80	81
F2	Vanderbilt (-,18)	A L	71	78
F6	Kentucky	H L	63	66
F9	Mississippi State	H L	64	83
F16	Ole Miss	A W	90	78
F20	Tennessee (-,2)	A L	70	89
F24	Alabama	H W	88	76
F27	Mississippi State	A L	78	89
M1	South Carolina	H L	63	69
M5	Georgia	H L	54	59
M8	Arkansas	A L	64	77
M13	Vanderbilt (-,17)	N5 L	82	93

Numbers in parentheses — (Coach Jeff Lebo's team's rank, Opponent's rank) — heading into the game.



COACHING STAFF

Head Coach Jeff Lebo vs. All Foes

Team	Totals	Home	Away	Neutral
Air Force	1-0	0-0	1-0	0-0
Alabama	2-7	1-2	1-5	0-0
Alabama A&M	1-0	1-0	0-0	0-0
Alabama State	1-0	0-0	1-0	0-0
Appalachian State	2-2	0-2	1-0	1-0
Arkansas	2-6	2-2	0-4	0-0
Ashbury College	2-0	2-0	0-0	0-0
Austin Peay	8-2	4-0	3-1	1-1
Belmont	2-0	2-0	0-0	0-0
Bluefield College	1-0	1-0	0-0	0-0
Bradley	1-0	0-0	1-0	0-0
Bryan	1-0	1-0	0-0	0-0
Charleston Southern	3-0	1-0	2-0	0-0
Cincinnati	0-1	0-0	0-1	0-0
The Citadel	3-0	1-0	2-0	0-0
College of Charleston	4-2	1-0	3-2	0-0
Colorado State	1-1	1-0	0-1	0-0
Covenant College	1-0	1-0	0-0	0-0
Davidson	2-0	2-0	0-0	0-0
Dayton	1-0	1-0	0-0	0-0
Delaware	1-0	0-0	0-0	1-0
East Tennessee State	2-4	2-1	0-1	0-2
Eastern Illinois	4-4	2-1	2-3	0-0
Eastern Kentucky	8-0	4-0	4-0	0-0
Eastern Michigan	2-0	1-0	1-0	0-0
Elon	1-1	1-0	0-1	0-0
Emmanuel College	1-0	1-0	0-0	0-0
Evansville	0-1	0-0	0-1	0-0
Florida	0-4	0-2	0-2	0-0
Furman	3-1	2-0	1-1	0-0
Gardner-Webb	1-0	1-0	0-0	0-0
George Washington	1-0	0-0	0-0	1-0
Georgia	1-4	1-1	0-2	0-1
Georgia Southern	3-3	2-1	0-2	1-0
Georgia State	1-0	0-0	0-0	1-0
Idaho State	1-0	1-0	0-0	0-0
Illinois State	1-0	0-0	1-0	0-0
Iowa State	0-1	0-0	0-1	0-0
Jacksonville State	1-0	1-0	0-0	0-0
Kansas	0-1	0-0	0-1	0-0
Kennesaw State	1-0	1-0	0-0	0-0
Kent State	0-1	0-1	0-0	0-0
Kentucky	0-4	0-2	0-2	0-0
King College	1-0	1-0	0-0	0-0
La Salle	0-1	0-0	0-0	0-1
Liberty	0-1	0-0	0-1	0-0
Lipscomb	2-0	1-0	0-0	1-0
LSU	2-6	1-3	1-3	0-0
Louisiana-Monroe	1-0	1-0	0-0	0-0
Louisiana Tech	1-0	1-0	0-0	0-0
Louisville	0-1	0-0	0-1	0-0
Loyola (Chicago)	1-1	1-0	0-1	0-0
McNeese State	1-0	1-0	0-0	0-0
Memphis	0-1	0-0	0-1	0-0
Mercer	1-0	1-0	0-0	0-0
Middle Tennessee State	4-3	2-1	0-2	2-0
Milligan	1-0	1-0	0-0	0-0
Miles College	1-0	1-0	0-0	0-0
Mississippi State	2-6	2-2	0-4	0-0
Montreat	1-0	1-0	0-0	0-0
Morehead State	5-3	4-0	1-3	0-0
Murray State	3-7	2-2	1-4	0-1
New Mexico	0-1	0-0	0-1	0-0
Nicholls State	2-0	2-0	0-0	0-0
North Carolina	0-1	0-0	0-1	0-0
UNC-Asheville	1-1	1-0	0-1	0-0
UNC-Greensboro	3-0	2-0	1-0	0-0
North Texas	0-1	0-0	0-1	0-0
Notre Dame	0-1	0-0	0-1	0-0

Team	Totals	Home	Away	Neutral
Ohio State	0-1	0-0	0-1	0-0
Oklahoma State	0-1	0-0	0-0	0-1
Ole Miss	4-4	2-2	2-2	0-0
Oral Roberts	1-0	0-0	1-0	0-0
Pittsburgh	0-2	0-1	0-1	0-0
Presbyterian College	1-0	1-0	0-0	0-0
Reinhardt College	2-0	2-0	0-0	0-0
Samford	2-0	1-0	1-0	0-0
South Alabama	1-0	1-0	0-0	0-0
South Carolina	3-2	0-2	3-0	0-0
South Carolina State	1-1	1-0	0-1	0-0
Southern	1-0	0-0	0-0	1-0
Southern Miss	1-1	1-0	0-1	0-0
Southeast Missouri State	6-3	2-2	3-1	1-0
Southeastern Louisiana	1-0	1-0	0-0	0-0
Temple	2-0	1-0	1-0	0-0
Tennessee	2-3	2-0	0-3	0-0
Tennessee-Chattanooga	1-1	1-0	0-1	0-0
Tennessee-Martin	9-0	4-0	4-0	1-0
Tennessee State	8-3	5-1	3-2	0-0
Tennessee Wesleyan	2-0	2-0	0-0	0-0
Texas A&M	0-2	0-1	0-1	0-0
Texas A&M-Corpus Christi	1-0	1-0	0-0	0-0
Toccoa Falls	1-0	1-0	0-0	0-0
Toledo	0-1	0-0	0-0	0-1
Towson	1-0	1-0	0-0	0-0
Troy	1-0	1-0	0-0	0-0
Tulane	0-1	0-0	0-1	0-0
UAB	0-1	0-0	0-1	0-0
UNLV	0-1	0-1	0-0	0-0
Vanderbilt	2-5	1-1	0-2	1-2
Virginia	0-1	0-0	0-0	0-1
Virginia Military Inst.	2-0	0-0	1-0	1-0
Weber State	1-0	0-0	0-0	1-0
West Virginia	0-1	0-0	0-0	0-1
Western Carolina	3-0	1-0	2-0	0-0
Winston-Salem State	1-0	1-0	0-0	0-0
Winthrop	1-0	1-0	0-0	0-0
Wisconsin	0-1	0-0	0-0	0-1
Wofford	2-3	2-2	0-1	0-0
Xavier	0-1	0-1	0-0	0-0
Yale	1-0	1-0	0-0	0-0



Auburn head coach Jeff Lebo and his father, assistant Dave Lebo

2008-09 Outlook
2008-09 Tigers
Coaching Staff
Coliseum
2007-08 Review
Tiger Records
AU Hoop History
Tiger Tracks
Administration

Jeff Lebo vs. All Foes as a ...

Head Coach, Asst. Coach & Player (1985-2008)

Team	Totals	Head Coach	Asst. Coach	Player
Air Force	2-0	1-0	1-0	0-0
	Away: 1-0	A: 1-0		
	Neutral: 1-0		N: 1-0	
Alabama	10-10	3-8	7-2	0-0
	Home: 6-3	H: 2-2	H: 4-1	
	Away: 2-7	A: 1-6	A: 1-1	
	Neutral: 2-0		N: 2-0	
Alabama A&M	1-0	1-0	0-0	0-0
	Home: 1-0	H: 1-0		
Alabama State	1-0	1-0	0-0	0-0
	Home: 1-0	H: 1-0		
Appalachian State	8-2	2-2	6-0	0-0
	Home: 2-2	H: 0-2	H: 2-0	
	Away: 3-0	A: 1-0	A: 2-0	
	Neutral: 3-0	N: 1-0	N: 2-0	
Arizona	2-2	0-0	1-1	1-1
	Home: 0-0			
	Away: 0-1		A: 0-1	
	Neutral: 2-1		N: 1-0	N: 1-1
Arkansas	4-11	2-6	2-5	0-0
	Home: 4-3	H: 2-2	H: 2-1	
	Away: 0-7	A: 0-4	A: 0-3	
	Neutral: 0-1		N: 0-1	
Asbury College	2-0	2-0	0-0	0-0
	Home: 2-0	H: 2-0		
Auburn	3-4	0-0	3-4	0-0
	Home: 1-1		H: 1-1	
	Away: 2-2		A: 2-2	
	Neutral: 0-1		N: 0-1	
Austin Peay	12-3	8-2	4-1	0-0
	Home: 6-0	H: 4-0	H: 2-0	
	Away: 4-2	A: 3-1	A: 1-1	
	Neutral: 2-1	N: 1-1	N: 1-0	
Belmont	4-0	2-0	2-0	0-0
	Home: 4-0	H: 2-0	H: 2-0	
Belmont Abbey	1-0	0-0	1-0	0-0
	Home: 1-0		H: 1-0	
Bluefield College	1-0	1-0	0-0	0-0
	Home: 1-0	H: 1-0		
Boise State	1-0	0-0	1-0	0-0
	Neutral: 1-0		N: 1-0	
Bowling Green	1-0	0-0	1-0	0-0
	Neutral: 1-0		N: 1-0	
Bradley	1-0	1-0	0-0	0-0
	Away: 1-0	A: 1-0		
BYU	1-1	0-0	1-1	0-0
	Away: 1-0		A: 1-0	
	Neutral: 0-1		N: 0-1	
Brown	1-0	0-0	0-0	1-0
	Neutral: 1-0			N: 1-0
Bryan	1-0	1-0	0-0	0-0
	Home: 1-0	H: 1-0		
Campbell	1-1	0-0	1-1	0-0
	Home: 1-1		H: 1-1	
Chaminade	1-0	0-0	1-0	0-0
	Neutral: 1-0		N: 1-0	
Charleston Southern	4-1	3-0	1-1	0-0
	Home: 2-1	H: 1-0	H: 1-1	
	Away: 2-0	A: 2-0		

Team	Totals	Head Coach	Asst. Coach	Player
Chattanooga	1-0	0-0	0-0	1-0
	Home: 1-0			H: 1-0
Cincinnati	3-1	0-1	3-0	0-0
	Home: 1-0		H: 1-0	
	Away: 2-1	A: 0-1	A: 2-0	
The Citadel	14-0	3-0	9-0	2-0
	Home: 5-0	H: 1-0	H: 4-0	
	Away: 5-0	A: 2-0	A: 3-0	
	Neutral: 4-0		N: 2-0	N: 2-0
Clemson	8-5	0-0	1-4	7-1
	Home: 4-2		H: 0-2	H: 4-0
	Away: 4-3		A: 1-2	A: 3-1
Coastal Carolina	0-1	0-0	0-1	0-0
	Home: 0-1		H: 0-1	
College of Charleston	5-2	4-2	1-0	0-0
	Home: 2-0	H: 1-0	H: 1-0	
	Away: 3-2	A: 3-2		
Colorado State	1-1	1-1	0-0	0-0
	Home: 1-0	H: 1-0		
	Away: 0-1	A: 0-1		
Coppin State	0-1	0-0	0-1	0-0
	Neutral: 0-1		N: 0-1	
Covenant College	1-0	1-0	0-0	0-0
	Home: 1-0	H: 1-0		
Davidson	3-0	2-0	1-0	0-0
	Home: 2-0	H: 2-0		
	Neutral: 1-0		N: 1-0	
Dayton	2-0	1-0	1-0	0-0
	Home: 1-0	H: 1-0		
	Away: 1-0		A: 1-0	
Delaware	1-0	1-0	0-0	0-0
	Neutral: 1-0	N: 1-0		
DePaul	1-0	0-0	0-0	1-0
	Away: 1-0			A: 1-0
Duke	5-5	0-0	0-0	5-5
	Home: 2-2			H: 2-2
	Away: 2-2			A: 2-2
	Neutral: 1-1			N: 1-1
East Tennessee State	3-4	2-4	0-0	1-0
	Home: 3-1	H: 2-1		H: 1-0
	Away: 0-1	A: 0-1		
	Neutral: 0-2	N: 0-2		
Eastern Illinois	4-4	4-4	0-0	0-0
	Home: 2-1	H: 2-1		
	Away: 2-3	A: 2-3		
Eastern Kentucky	8-0	8-0	0-0	0-0
	Home: 4-0	H: 4-0		
	Away: 4-0	A: 4-0		
Eastern Michigan	2-0	2-0	0-0	0-0
	Home: 1-0	H: 1-0		
	Away: 1-0	A: 1-0		
Eckerd	1-0	0-0	1-0	0-0
	Home: 1-0		H: 1-0	
Elon	1-1	1-1	0-0	0-0
	Home: 1-0	H: 1-0		
	Away: 0-1	A: 0-1		
Emmanuel College	1-0	1-0	0-0	0-0
	Home: 1-0	H: 1-0		
Evansville	0-1	0-1	0-0	0-0
	A: 0-1	A: 0-1		



Team	Totals	Head Coach	Asst. Coach	Player
Florida	7-11	0-4	7-7	0-0
	Home: 4-4	H: 0-2	H: 4-2	
	Away: 2-6	A: 0-2	A: 2-4	
	Neutral: 1-1		N: 1-1	
Florida State	1-0	0-0	0-0	1-0
	Neutral: 1-0			N: 1-0
Fordham	2-0	0-0	0-0	2-0
	Neutral: 2-0			N: 2-0
Furman	9-3	3-1	5-2	1-0
	Home: 5-1	H: 2-0	H: 3-1	
	Away: 3-2	A: 1-1	A: 2-1	
	Neutral: 1-0			N: 1-0
Gardner-Webb	1-0	1-0		
	Home: 1-0	H: 1-0		
George Mason	2-0	0-0	2-0	0-0
	Home: 1-0		H: 1-0	
	Away: 1-0		A: 1-0	
George Washington	1-1	1-0	0-1	0-0
	Neutral: 1-1	N: 1-0	N: 0-1	
Georgia	9-10	1-4	7-6	1-0
	Home: 7-2	H: 1-1	H: 5-1	H: 1-0
	Away: 2-6	A: 0-2	A: 2-4	
	Neutral: 0-2	N: 0-1	N: 0-1	
Georgia Southern	5-3	3-3	2-0	0-0
	Home: 4-1	H: 2-1	H: 2-0	
	Away: 0-2	A: 0-2		
	Neutral: 1-0	N: 1-0		
Georgia State	1-0	1-0	0-0	0-0
	Neutral: 1-0	N: 1-0		
Georgia Tech	8-1	0-0		8-1
	Home: 4-0			H: 4-0
	Away: 3-1			A: 3-1
	Neutral: 1-0			N: 1-0
Hawaii	1-0	0-0	0-0	1-0
	Away: 1-0			A: 1-0
Hawaii Loa	1-0	0-0	0-0	1-0
	Neutral: 1-0			N: 1-0
Idaho State	1-0	1-0	0-0	0-0
	Home: 1-0	H: 1-0		
Illinois	3-1	0-0	1-1	2-0
	Home: 1-0			H: 1-0
	Away: 1-0			A: 1-0
	Neutral: 1-1		N: 1-1	
Illinois State	1-0	1-0	0-0	0-0
	Away: 1-0	A: 1-0		
Indiana	1-0	0-0	0-0	1-0
	Neutral: 1-0			N: 1-0
Iona	1-0	0-0	0-0	1-0
	Home: 1-0			H: 1-0
Iowa	0-2	0-0	0-1	0-1
	Home: 0-1			H: 0-1
	Neutral: 0-1		N: 0-1	
Iowa State	0-1	0-1	0-0	0-0
	Away: 0-1	A: 0-1		
Jacksonville	2-0	0-0	0-0	2-0
	Home: 1-0			H: 1-0
	Away: 1-0			A: 1-0
Jacksonville State	1-0	1-0		
	Home: 1-0	H: 1-0		
James Madison	2-0	0-0	2-0	0-0
	Home: 1-0		H: 1-0	
	Away: 1-0		A: 1-0	
Kansas	0-1	0-1	0-0	0-0
	Away: 0-1	A: 0-1		
Kansas State	1-0	0-0	0-0	1-0
	Neutral: 1-0			N: 1-0

Team	Totals	Head Coach	Asst. Coach	Player
Kennesaw State	1-0	1-0	0-0	0-0
	Home: 1-0	H: 1-0		
Kent State	0-1	0-1	0-0	0-0
	Home: 0-1	H: 0-1		
Kentucky	4-13	0-4	4-9	0-0
	Home: 3-5	H: 0-2	H: 3-3	
	Away: 1-7	A: 0-2	A: 1-5	
	Neutral: 0-1		N: 0-1	
King College	1-0	1-0	0-0	0-0
	Home: 1-0	H: 1-0		
La Salle	2-1	0-1	0-0	2-0
	Home: 1-0			H: 1-0
	Away: 1-0			A: 1-0
	Neutral: 0-1	N: 0-1		
Liberty	2-2	0-1	2-1	0-0
	Home: 1-1		H: 1-1	
	Away: 1-1	A: 0-1	A: 1-0	
Lipscomb	2-0	2-0	0-0	0-0
	Home: 1-0	H: 1-0		
	Neutral: 1-0	N: 1-0		
LSU	9-8	2-6	7-2	0-0
	Home: 3-4	H: 1-3	H: 2-1	
	Away: 4-3	A: 1-3	A: 3-0	
	Neutral: 2-1		N: 2-1	
Louisiana-Monroe	1-0	1-0	0-0	0-0
	Home: 1-0	H: 1-0		
Louisiana Tech	1-0	1-0	0-0	0-0
	Home: 1-0	H: 1-0		
Louisville	1-2	0-1	1-0	0-1
	Home: 1-0		H: 1-0	
	Away: 0-1	A: 0-1		
	Neutral: 0-1			N: 0-1
Loyola (Chicago)	1-1	1-1	0-0	0-0
	Home: 1-0	H: 1-0		
	Away: 0-1	A: 0-1		
Loyola Marymount	1-0	0-0	0-0	1-0
	Neutral: 1-0			N: 1-0
Manhattan	1-0	0-0	0-0	1-0
	Neutral: 1-0			N: 1-0
Marquette	2-0	0-0	0-0	2-0
	Home: 1-0			H: 1-0
	Away: 1-0			A: 1-0
Marshall	3-1	0-0	3-1	0-0
	Home: 2-0		H: 2-0	
	Away: 1-1		A: 1-1	
Maryland	11-2	0-0	1-0	10-2
	Home: 4-1		H: 1-0	H: 3-1
	Away: 4-0			A: 4-0
	Neutral: 3-1			N: 3-1
McNeese State	1-0	1-0		
	Home: 1-0	H: 1-0		



Jeff Lebo with North Carolina head coach Roy Williams (center) and former Tar Heels including Eddie Fogler (far right).

Team	Totals	Head Coach	Asst. Coach	Player
Memphis	1-3	0-1	1-2	0-0
	Home: 0-1		H: 0-1	
	Away: 1-2	A: 0-1	A: 1-1	
Mercer	1-0	1-0	0-0	0-0
	Home: 1-0	H: 1-0		
Miami (Fla.)	1-0	0-0	0-0	1-0
	Home: 1-0			H: 1-0
Michigan	2-2	0-0	0-1	2-1
	Neutral: 2-2		N: 0-1	N: 2-1
Middle Tennessee State	4-5	4-3	0-2	0-0
	Home: 2-2	H: 2-1	H: 0-1	
	Away: 0-2	A: 0-2		
	Neutral: 2-1	N: 2-0	N: 0-1	
Miles College	1-0	1-0	0-0	0-0
	Home: 1-0	H: 1-0		
Milligan	1-0	1-0	0-0	0-0
	Home: 1-0	H: 1-0		
Ole Miss	9-7	4-4	5-3	0-0
	Home: 5-2	H: 2-2	H: 3-0	
	Away: 2-5	A: 2-2	A: 0-3	
	Neutral: 2-0	N: 2-0	N: 2-0	
Mississippi State	6-8	2-6	4-2	0-0
	Home: 4-3	H: 2-2	H: 2-1	
	Away: 2-5	A: 0-4	A: 2-1	
Missouri	1-2	0-0	0-0	1-2
	Neutral: 1-2			N: 1-2
Montreat	1-0	1-0	0-0	0-0
	Home: 1-0	H: 1-0		
Morehead State	5-3	5-3	0-0	0-0
	Home: 4-0	H: 4-0		
	Away: 1-3	A: 1-3		
Murray State	3-7	3-7	0-0	0-0
	Home: 2-2	H: 2-2		
	Away: 1-4	A: 1-4		
	Neutral: 0-1	N: 0-1		
Nevada	2-0	0-0	0-0	2-0
	Home: 1-0			H: 1-0
	Away: 1-0			A: 1-0
Nicholls State	2-0	2-0	0-0	0-0
	Home: 2-0	H: 2-0		
UNLV	1-1	0-1	0-0	1-0
	Home: 0-1	H: 0-1		
	Neutral: 1-0			N: 1-0
New Mexico	0-1	0-1	0-0	0-0
	Away: 0-1	A: 0-1		

Team	Totals	Head Coach	Asst. Coach	Player
North Carolina	0-3	0-1	0-2	0-0
	Away: 0-1	A: 0-1		
	Neutral: 0-2		N: 0-2	
North Carolina A&T	1-0	0-0	1-0	0-0
	Neutral: 1-0		N: 1-0	
UNC-Asheville	2-2	1-1	1-1	0-0
	Home: 2-1	H: 1-0	H: 1-1	
	Away: 0-1	A: 0-1		
UNC-Charlotte	2-0	0-0	2-0	0-0
	Away: 1-0		A: 1-0	
	Neutral: 1-0		N: 1-0	
UNC-Greensboro	4-0	3-0	1-0	0-0
	Home: 3-0	H: 2-0	H: 1-0	
	Away: 1-0	A: 1-0		
North Carolina State	8-3	0-0	2-0	6-3
	Home: 5-0		H: 1-0	H: 4-0
	Away: 3-2		A: 1-0	A: 2-2
	Neutral: 0-1			N: 0-1
North Texas	1-1	0-1	0-0	1-0
	Away: 0-1	A: 0-1		
	Neutral: 1-0			N: 1-0
Northeast Louisiana	1-0	0-0	1-0	0-0
	Neutral: 1-0		N: 1-0	
Northwestern	1-0	0-0	1-0	0-0
	Home: 1-0		H: 1-0	
Notre Dame	2-2	0-1	0-0	2-1
	Home: 1-0			H: 1-0
	Away: 0-2	A: 0-1		A: 0-1
	Neutral: 1-0			N: 1-0
Ohio	1-0	0-0	0-0	1-0
	Home: 1-0			H: 1-0
Ohio State	0-1	0-1	0-0	0-0
	Away: 0-1	A: 0-1		
Oklahoma State	0-1	0-1	0-0	0-0
	Neutral: 0-1	N: 0-1		
Old Dominion	1-2	0-0	0-2	1-0
	Home: 0-1		H: 0-1	
	Away: 1-1		A: 0-1	A: 1-0
Oral Roberts	2-1	1-0	1-1	0-0
	Home: 1-0		H: 1-0	
	Away: 1-1	A: 1-0	A: 0-1	
Oregon	1-1	0-0	1-1	0-0
	Neutral: 1-1		N: 1-1	
Pittsburgh	0-2	0-2	0-0	0-0
	Home: 0-1	H: 0-1		
	Away: 0-1	A: 0-1		
Pennsylvania	1-0	0-0	0-0	1-0
	Neutral: 1-0			N: 1-0
Pepperdine	1-0	0-0	0-0	1-0
	Away: 1-0			A: 1-0
Presbyterian College	1-0	1-0	0-0	0-0
	Home: 1-0	H: 1-0		
Providence	0-2	0-0	0-2	0-0
	Home: 0-1		H: 0-1	
	Away: 0-1		A: 0-1	
Purdue	2-0	0-0	0-0	2-0
	Neutral: 2-0			N: 2-0
Radford	1-0	0-0	1-0	0-0
	Home: 1-0		H: 1-0	
Reinhardt College	2-0	2-0	0-0	0-0
	Home: 2-0	H: 2-0		
Richmond	2-1	0-0	0-1	2-0
	Away: 1-0			A: 1-0
	Neutral: 1-1		N: 0-1	N: 1-0
Rutgers	1-0	0-0	0-0	1-0
	Neutral: 1-0			N: 1-0



Auburn upsets Temple 80-78 in the 2004-05 season opener in Philadelphia as coach Jeff Lebo records his first Tiger victory.



Team	Totals	Head Coach	Asst. Coach	Player
Saint Joseph's	1-0	0-0	1-0	0-0
	Home: 1-0		H: 1-0	
Samford	2-0	2-0	0-0	0-0
	Home: 1-0	H: 1-0		
	Away: 1-0	A: 1-0		
San Diego State	1-0	0-0	0-0	1-0
	Away: 1-0			A: 1-0
South Alabama	1-0	1-0	0-0	0-0
	Home: 1-0	H: 1-0		
South Carolina	6-2	3-2	3-0	0-0
	Home: 2-2	H: 0-2	H: 2-0	
	Away: 4-0	A: 3-0	A: 1-0	
South Carolina State	6-1	1-1	5-0	0-0
	Home: 6-0	H: 1-0	H: 5-0	
	Away: 0-1	A: 0-1		
Southeast Missouri State	6-3	6-3	0-0	0-0
	Home: 2-2	H: 2-2		
	Away: 3-1	A: 3-1		
	Neutral: 1-0	N: 1-0		
Southeastern Louisiana	1-0	1-0		
	Home: 1-0	H: 1-0		
Southern	2-0	1-0	0-0	1-0
	Neutral: 2-0	N: 1-0		N: 1-0
Southern Cal	1-0	0-0	0-0	1-0
	Neutral: 1-0			N: 1-0
SMU	3-0	0-0	1-0	2-0
	Home: 3-0	H: 1-0	H: 1-0	H: 2-0
Southern Miss	2-2	1-1	1-1	0-0
	Home: 2-0	H: 1-0	H: 1-0	
	Away: 0-2	A: 0-1	A: 0-1	
Stanford	2-1	0-0	0-1	2-0
	Home: 2-0			H: 2-0
	Neutral: 0-1		N: 0-1	
Stetson	2-0	0-0	0-0	2-0
	Home: 2-0			H: 2-0
Syracuse	1-1	0-0	0-0	1-1
	Neutral: 1-1		N: 0-0	N: 1-1
Temple	2-3	2-0	0-2	0-1
	Home: 1-1	H: 1-0		H: 0-1
	Away: 1-0	A: 1-0		
	Neutral: 0-2		N: 0-2	
Tennessee	13-5	2-3	11-2	0-0
	Home: 8-0	H: 2-0	H: 6-0	
	Away: 5-5	A: 0-3	A: 5-2	
Tennessee-Chattanooga	7-3	1-1	6-2	0-0
	Home: 2-1	H: 1-0	H: 1-1	
	Away: 1-2	A: 0-1	A: 1-1	
	Neutral: 4-0		N: 4-0	
Tennessee-Martin	9-0	9-0	0-0	0-0
	Home: 4-0	H: 4-0		
	Away: 4-0	A: 4-0		
	Neutral: 1-0	N: 1-0		
Tennessee State	8-3	8-3	0-0	0-0
	Home: 5-1	H: 5-1		
	Away: 3-2	A: 3-2		
Tennessee Wesleyan	2-0	2-0	0-0	0-0
	Home: 2-0	H: 2-0		
Texas A&M	0-2	0-2	0-0	0-0
	Home: 0-1	H: 0-1		
	Away: 0-1	A: 0-1		
Texas A&M-C.C.	1-0	1-0	0-0	0-0
	Home: 1-0	H: 1-0		
Toccoa Falls	1-0	1-0	0-0	0-0
	Home: 1-0	H: 1-0		
Toledo	0-1	0-1	0-0	0-0
	Neutral: 0-1	N: 0-1		

Team	Totals	Head Coach	Asst. Coach	Player
Towson	3-0	1-0	1-0	1-0
	Home: 2-0	H: 1-0	H: 1-0	
	Neutral: 1-0			N: 1-0
Troy	1-0	1-0	0-0	0-0
	Home: 1-0	H: 1-0		
Tulane	1-1	0-1	1-0	0-0
	Away: 0-1	A: 0-1		
	Neutral: 1-0		N: 1-0	
Utah	1-0	0-0	0-0	1-0
	Neutral: 1-0			N: 1-0
UAB	2-1	0-1	1-0	1-0
	Away: 0-1	A: 0-1		
	Neutral: 2-0		N: 1-0	N: 1-0
UCLA	4-1	0-0	0-0	4-1
	Home: 2-0			H: 2-0
	Away: 1-1			A: 1-1
	Neutral: 1-0			N: 1-0
UNLV	1-0	0-0	1-0	0-0
	Neutral: 1-0		N: 1-0	
Vanderbilt	10-10	2-5	7-4	1-1
	Home: 5-3	H: 1-1	H: 3-2	H: 1-0
	Away: 3-5	A: 0-2	A: 3-2	A: 0-1
	Neutral: 2-2	N: 1-2	N: 1-0	
Virginia	7-4	0-1	0-1	7-2
	Home: 4-0			H: 4-0
	Away: 2-2			A: 2-2
	Neutral: 1-2	N: 0-1	N: 0-1	N: 1-0
Virginia Military Institute	6-0	2-0	4-0	0-0
	Home: 2-0		H: 2-0	
	Away: 3-0	A: 1-0	A: 2-0	
	Neutral: 1-0	N: 1-0		
Virginia Tech	1-0	0-0	1-0	0-0
	Neutral: 1-0		N: 1-0	
Wake Forest	7-2	0-0	0-0	7-2
	Home: 4-0			H: 4-0
	Away: 0-1			A: 0-1
	Neutral: 3-1			N: 3-1
Weber State	1-0	1-0	0-0	0-0
	Neutral: 1-0	N: 1-0		
West Virginia	0-1	0-1	0-0	0-0
	Neutral: 0-1	N: 0-1		
Western Carolina	8-0	3-0	5-0	0-0
	Home: 4-0	H: 1-0	H: 3-0	
	Away: 4-0	A: 2-0	A: 2-0	
Winston-Salem State	1-0	1-0	0-0	0-0
	Home: 1-0	H: 1-0		
Winthrop	1-0	1-0		
	Home: 1-0	H: 1-0		
Wisconsin	0-1	0-1	0-0	0-0
	Neutral: 0-1	N: 0-1		
Wofford	6-3	2-3	4-0	0-0
	Home: 6-2	H: 2-2	H: 4-0	
	Away: 0-1	A: 0-1		
Xavier	1-1	0-1	1-0	0-0
	Home: 0-1	H: 0-1		
	Away: 1-0		A: 1-0	
Yale	1-0	1-0	0-0	0-0
	Away: 1-0	A: 1-0		



The Auburn basketball team participates annually in a run for the Breast Cancer Center at the East Alabama Medical Center during Breast Cancer Awareness month.

Associate Head Coach John Cooper

John Cooper enters his fifth season at Auburn University as associate head coach and his 15th season overall as an assistant.

Cooper has played a vital role in the revitalization of the Auburn basketball program as the Tigers recorded their first winning season since 2003 and played for the SEC's Western Division title in the 2007 regular season finale.

When Auburn head coach Jeff Lebo missed a game each of the past two seasons, Cooper was the acting head coach. With Lebo sidelined with a stomach virus, Cooper coached Auburn to an 80-68 victory over LSU Feb. 28, 2007.

Cooper made his coaching debut in an 84-64 loss at Arkansas Feb. 11, 2006, when Lebo spent the entire game in the Tigers' locker room lying on a table as he was sick with the flu.

Prior to coming to Auburn in April 2004, Cooper spent the two seasons prior at Oregon where he helped the Ducks to a 41-23 mark. Oregon went 23-10 with a NCAA Tournament appearance in 2002-03 and had an 18-13 record in 2003-04, losing in the NIT semifinals.

He coached a pair of All-Americans in Pac-10 Player of the Year Luke Ridnour of the NBA's Seattle SuperSonics and Luke Jackson, formerly of the Cleveland Cavaliers.

Cooper spent six years as an assistant at South Carolina under his former college coach, Eddie Fogler, from 1995-2001, helping lead the Gamecocks to the SEC Championship with a 24-8 (15-1 SEC) record in 1996-97.

Cooper and Lebo were Fogler's assistants at USC for three years from 1995-98. South Carolina made four postseason appearances, including back-to-back NCAA Tournaments in 1997 and 1998 and a pair of NITs in 1996 and 2001. Cooper coached former Cleveland Cavalier Ryan Stack and the Gamecocks' all-time leading scorer, All-American B.J. McKie, at South Carolina.

Prior to South Carolina, Cooper spent two seasons as an assistant to Rick Duckett at Div. II Fayetteville (N.C.) State where the Broncos went 18-10 in 1993-94 and 15-10 in 1994-95.

Cooper, 39, was a standout forward for Wichita State, playing his first two seasons under Fogler. He scored 1,153 points during his career (1988-91), which ranks 21st in Shocker history and was the team MVP as a junior.

The Kansas City, Mo., native led Wichita State in scoring

John Cooper Quick Sketch

PERSONAL DATA: Born John Anthony Cooper on Feb. 16, 1969; married to the former Melissa Mathis of Greenwood, S.C., on Aug. 18, 2002; one daughter, Kennedy (2), and one son, Cameron (born Jan. 29, 2008).

YEARS AT AUBURN: Fifth. Joined Auburn staff on April 16, 2004.

PREVIOUS COACHING EXPERIENCE: College – Assistant coach at Div. II Fayetteville (N.C.) State for two years (1993-95); Assistant coach at South Carolina for six years (1995-2001); Assistant coach at Oregon for two years (2002-04).

EDUCATION: Graduated from Rockhurst High School in Kansas City, Mo., in 1987. B.S. in Business Administration from Wichita State in 1991.

PLAYING EXPERIENCE: High School – Lettered three years in basketball at Rockhurst High School in Kansas City, Mo. (1984-87). College – Four-year letterman at Wichita State (1988-91) where he scored 1,153 career points, averaging 20.8 points as a senior and 17.0 points as a junior.

and rebounding during both his junior and senior seasons, averaging 20.8 points as a senior and 17.0 points as a junior. He was a team captain his final two seasons and a Rhodes Scholar candidate.

After graduating in 1991 with a Business Administration degree from Wichita State, Cooper was drafted by Fort Wayne of the Continental Basketball Association. He played one year with Fort Wayne and then another season for the Commodore Mustangs in Den Helder, Holland, before joining the coaching ranks.

Born February 16, 1969, Cooper married the former Melissa Mathis of Greenwood, S.C., on August 18, 2002. They have one daughter, Kennedy (2), and one son, Kameron (born Jan. 29, 2008).



COACHING STAFF

Assistant Coach Bryan Bartley

Bryan Bartley enters his third season at Auburn under head coach Jeff Lebo and his second as an assistant coach.

Bartley's coaching duties have also included recruiting and scouting for the Tigers.

Bartley came to Auburn after working with ADT Security Services as a Residential Resale Specialist in Norcross, Ga., He worked in corporate sales for Samson Health & Fitness Center in Lithonia, Ga., from 2004-05.

He was the head coach for Landmark Christian School in Fairburn, Ga., for four years from 2001-05 and made a school-best Class A Elite Eight state tournament appearance in 2004 and reached the Sweet Sixteen in 2001. Bartley coached McDonald's All-American and Atlanta Hawk, Randolph Morris, at Landmark Christian. LCS defeated Southwest Atlanta Christian Academy, which featured Dwight Howard, now of the Orlando Magic, in a nationally-televised game on ESPN2.

In 2005, he was a counselor with the Jordan Flight School in Santa Barbara, Calif., a coach at the Nike All-American Camp in Indianapolis, Ind., Director of the Nike County Challenge and Director of the Atlanta Pro City High School league.

Bartley was the commissioner of the ABCD Camp in Teaneck, N.J., in 2004 as well as an assistant coach in the EA Sports Roundball Classic and an AAU coach for the 15 & under Georgia Stars. The New York, N.Y., native was the Director of the Atlanta Pro City Summer League in Atlanta from 2000-06.

Bartley was a campus supervisor at Clarkston (Ga.) High School from 1996-2001, was an assistant boys varsity basketball coach at Lakeside High in Stone Mountain, Ga., from 1996-97 and worked in marketing and sales for Atlanta Glory the same year in 1996-97. He worked as a marketing representative with the NBA's Atlanta Hawks from 1991-95.

Bartley was the AAU coach for the 17 & under Atlanta Celtics from 1995-2001, was the Director of the ABCD Jr. Camp in Suwanee, Ga., and coached in the ABCD Camp in Hackensack, N.J., from 1998-2000.

He was the Director of the "Around the Peach" Exposure Clinic from 1997-2000, directed the Kenny Smith Pro-Am Summer League and was CEO of the Kenny Anderson Foundation in 2001.

After a three-year collegiate basketball career and then graduating from Upsala College in East Orange, N.J., in 1989 with a B.A. in Communications, Bartley played professionally in Portugal in the 1989-90 season.

Some of his teammates at New York's Archbishop Stepinac High School included Fred Quartlebaum (St. John's asst. coach), Marty Conlon (former Boston Celtic), Tom Parrotta (Canisius head coach) and Tim O'Toole (former Fairfield head coach).

Bryan Bartley Quick Sketch

PERSONAL DATA: Born Sept. 7, 1965, in New York, N.Y., on Sept. 7, 1965; married to the former Shauna Williams of Berkeley, Calif., on Aug. 31, 1996.

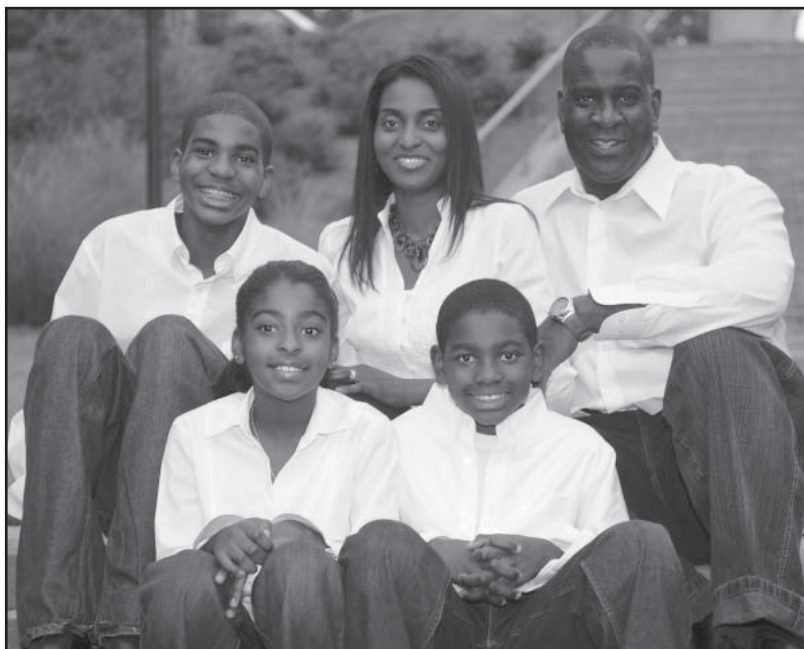
YEARS AT AUBURN: Third. Joined Auburn staff on Sept. 13, 2006.

PREVIOUS COACHING EXPERIENCE: High School – Assistant coach at Lakeside High School in Stone Mountain, Ga., for one year (1996-97); Head coach at Landmark Christian School in Fairburn, Ga., for four years (2001-05).

EDUCATION: Graduated from Archbishop Stepinac High School in New York, N.Y., in 1984; B.A. in Communications from Upsala College in East Orange, N.J., in 1989.

PLAYING EXPERIENCE: High School – Lettered four years in basketball at New York's Archbishop Stepinac High School (1980-84). Played three years with the prestigious Riverside Church Hawks AAU program. College – Three-year letterman in basketball at Upsala College in East Orange, N.J. (1986-89).

Born Sept. 7, 1965, in New York, N.Y., Bartley is married to the former Shuana Williams of Berkeley, Calif. They have four children, three sons Deshawn (18), Justice (12) and Jaylen (10) and one daughter, Aiyanna (9).



Assistant Coach Tim Craft

Tim Craft begins his first season as an assistant coach at Auburn University after spending the previous season Coach Jeff Lebo's Director of Basketball Operations at Auburn for the 2007-08 season.

Craft's coaching duties include recruiting, scouting and scheduling. As the Director of Basketball Operations, he handled the day-to-day responsibilities in the basketball office as well as team travel and scheduling.

The Tallahassee, Fla., native came to Auburn after a three-year stint as an assistant coach at Gardner-Webb University from 2004-07. He helped lead Gardner-Webb to the Atlantic Sun regular season title in 2004-05 in his first year at the school. It was Gardner-Webb's first Atlantic Sun title in any sport.

Craft coached four All-Atlantic Sun players in his three years and recruited and coached Tim Jennings, the first two-time Conference Defensive Player of the Year in Atlantic Sun history. He helped to assemble a top 50 national recruiting class for Gardner-Webb in 2006 (No. 49 by hoopscooponline.com).

Prior to coaching at Gardner-Webb, Craft spent two seasons as an assistant at Pensacola (Fla.) Junior College under coach Paul Swanson. In 2003-04, the Pirates went 20-10 and were ranked as high as No. 13 nationally.

At PJC, he coached Joel Anthony, a former UNLV standout and current member of the Miami Heat. Anthony was the 2007 Mountain West Player of the Year.

Twelve players signed Div. I scholarships during his two years at PJC and 10 of the 11 sophomores graduated during his tenure.

Craft began his coaching career as the assistant varsity coach and head junior varsity coach at Robert F. Munroe School in Quincy, Fla., in 2000-01. He was promoted to the Head Varsity Boy's Basketball Coach at Munroe the following season in 2001-02 before moving to PJC in 2002-03.

Craft earned his B.A. in History and a minor in Secondary Education from the University of Florida in 2000.

Born Feb. 3, 1977, Craft is married to the former Jessica Arenas of Tal-

Tim Craft Quick Sketch

PERSONAL DATA: Born James Timothy Craft in Oxford, Miss., on Feb. 3, 1977; married to the former Jessica Arenas of Tallahassee, Fla., on June 1, 2002; one daughter, Lola Ann Craft (1), as well as a golden retriever named Bear.

YEARS AT AUBURN: Second. Joined Auburn staff on June 1, 2007.

PREVIOUS COACHING EXPERIENCE: High School – Assistant varsity coach and head junior varsity coach at Robert F. Munroe School in Quincy, Fla., for one year (2000-01); Head varsity coach at Robert F. Munroe School for one year (2001-02); Junior College - Assistant coach at Pensacola (Fla.) Junior College for two seasons (2002-04); College - Assistant coach at Gardner-Webb University for three seasons (2004-07).

EDUCATION: Graduated from Florida State University High School in Tallahassee, Fla., in 1995. B.A. in History from the University of Florida in 2000.

PLAYING EXPERIENCE: High School – Lettered three years in basketball and two years in baseball at Florida State University High School.

lahassee, Fla., and they have one daughter, Lola Ann Craft (1), as well as a golden retriever named Bear.





COACHING STAFF

Dir. of Basketball Operations, Brandon Johnson

Brandon Johnson enters his fifth season at Auburn University and his 17th in the coaching profession.

Johnson has played a vital role in the revitalization of the Auburn basketball program as the Tigers recorded their first winning season since 2003 and played for the SEC's Western Division title in the 2007 regular season finale.

After four years as an assistant coach under coach Jeff Lebo, he begins his first season as Director of Basketball Operations.

Prior to coming to Auburn in April 2004, Johnson spent the two seasons prior as an assistant at the University of Texas-San Antonio, where the Roadrunners won the Southland Conference and made a NCAA Tournament appearance.

Johnson, 42, has coaching ties in both Alabama and Georgia, including a three-year stint as an assistant at Jacksonville State University from 1998-2001. Prior to going to UTSA, he was the head coach at Atlanta Technical College in 2001-02, where he was in the process of developing the new men's basketball program.

Johnson was an assistant at Clayton College & State University in Morrow, Ga., in 1997-98 and was an assistant at Atlanta Metropolitan College in 1996-97. He started his coaching career in 1992 as an assistant at Atlanta's Frederick Douglas High School for two years and then was an assistant at Benjamin Banneker High School in College Park, Ga., for two seasons from 1994-96.

He helped lead Atlanta Metropolitan to the Georgia Junior College Athletic Association Championship with a 14-0 record in 1996-97. His coaching honors include being named a three-time Georgia High School Association Assistant Coach of the Year in consecutive seasons from 1993-95.

A 1997 Georgia State University graduate in Psychology, Johnson earned a Master's in General Administration from Central Michigan University in 2002. The Lansing, Mich., native has numerous camp and clinic teaching experience, including his five-year affiliation with the Pete Newell Big Man Camp in Hawaii; working with the New Zealand National Team in 2000 and Nigerian Basketball League in 2003; and working at basketball schools for Bobby Knight, Tubby Smith, Tom Izzo, Eddie Fogler, Bobby Cremins, Jud Heathcote and Randy Ayers.

Born January 24, 1966, Johnson is married to the former Toni Michele Martin of Cleveland, Ohio, on July 15, 1995.



Brandon Johnson Quick Sketch

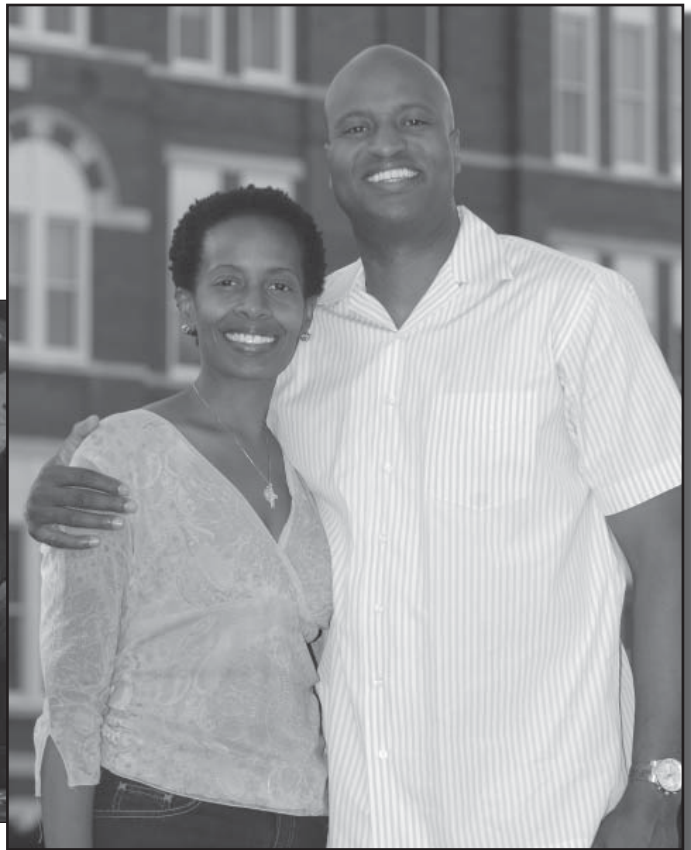
PERSONAL DATA: Born Brandon La' Monte Johnson in Lansing, Mich., on Jan. 24, 1966; married to the former Toni Michele Martin of Cleveland, Ohio, on July 15, 1995.

YEARS AT AUBURN: Fifth. Joined Auburn staff on April 16, 2004.

PREVIOUS COACHING EXPERIENCE: High School – Assistant coach at Atlanta's Frederick Douglass High School for two seasons (1992-94); Assistant coach at Benjamin Banneker High School in College Park, Ga., for two seasons (1994-96); Junior College – Assistant coach at Atlanta Metropolitan College for one season (1996-97); Head coach at Atlanta Technical College for one season (2001-02); College – Assistant coach at Clayton College & State University in Morrow, Ga., for one season (1997-98); Assistant coach at Jacksonville State (Ala.) University for three seasons (1998-2001); Assistant coach at the University of Texas-San Antonio for two seasons (2002-04).

EDUCATION: Graduated from Cardinal Gibbons High School in Baltimore, Md., in 1984; B.A. in Psychology from Georgia State in 1997. M.A. in General Administration from Central Michigan in 2002.

PLAYING EXPERIENCE: High School – Lettered in football and track at Cardinal Gibbons High School; 1984 Maryland Scholastic Association State High Jump Champion.



2008-09 Outlook
2008-09 Tigers
Coaching Staff
Coliseum
2007-08 Review
Tiger Records
AU Hoop History
Tiger Tracks
Administration

Senior Asst. to the Head Coach, Dave Lebo

Not many fathers, in any profession, can say that they work for their son. Dave Lebo is a prime example, and he loves it.

"Coach Dave," as he is known by, enters his fifth season at Auburn University, 11th on head coach Jeff Lebo's staff and his 42nd year in the basketball profession.

Lebo played a vital role in the revitalization of the Auburn basketball program as the Tigers recorded their first winning season since 2003 and played for the SEC's Western Division title in the 2007 regular season finale.

Coach Dave, the father of head coach Jeff Lebo, gave up a very successful head coaching career in the high school ranks, one in which he was named the 1988 National Coach of the Year, to join his son at the collegiate level.

In fact, Carlisle (Pa.) High School named its homecourt "Coach Lebo Court" in a ceremony Dec. 2, 2005, to honor and show appreciation for all of Coach Dave's service to the school and community.

He was inducted into the South Central Chapter of the Pennsylvania Sports Hall of Fame at its annual induction banquet Nov. 18, 2007, in Carlisle, Pa.

When Jeff Lebo accepted his first head coaching position in 1998 at Tennessee Tech, one of his first recruits was his father. Coach Dave worked as an assistant for Jeff at Tech and joined the entire staff at the University of Tennessee-Chattanooga when Jeff became the head coach for the Mocs in 2002. He coached two-time first-team All-Conference forward Ashley Champion both seasons. Coach Dave coached the big men at Tech, UTC and Auburn.

At Tennessee Tech, Coach Dave helped the Golden Eagles to a four-year mark of 75-43. After inheriting a program near the bottom of the Ohio Valley Conference, the Tech staff guided the Golden Eagles to back-to-back OVC regular-season titles in 2001 and 2002.

The Eagles won 20 or more games twice, going 20-9 in 2000-01 while the 2001-02 team set a school record for victories with a 27-7 record (15-1 OVC). They lost to Murray State in the OVC Tournament championship game but advanced to the NIT Quarterfinals with wins over Georgia State, Dayton and Yale before being eliminated by eventual champion Memphis. He coached nine All-OVC selections in four years at Tennessee Tech.

Coach Dave, 64, is considered one of the most successful high school basketball coaches in the state of Pennsylvania. He directed the boys program at Carlisle (Pa.) High School, all but two years from 1977-98 and compiled a remarkable 365-149 overall record.

While at Carlisle, Lebo guided his teams to four consecutive State Championships (118-11 record) and coached All-American Billy Owens, who later starred at Syracuse and had a 10-year NBA career. His son, Jeff, was a member of the first championship team in 1985.

Coach Dave was honored as the 1988 National Coach of the Year and the Associated Press Pennsylvania Coach of the Year. During his tenure, Carlisle won eight conference titles and six district championships.

He was the head coach of the United States All-Stars in the McDonald's Classic in Washington D.C. in 1984 and was the head coach of the West squad in the McDonald's All-American game in Philadelphia in 1987. He was presented "Carlisle's Finest Award - Teacher Category" in 1985.

Coach Dave was elected to the Elizabethtown College Sports Hall of Fame in 1988. He then worked one season as a head coach at Elizabethtown College, leading his alma mater to a 16-10 record in 1989-90, before returning to Carlisle High School.

He began his career as an assistant coach at East Pennsboro High School in Enola, Pa., from 1966-70 and then recorded a 120-59 record in seven years from 1970-77 as the head coach.

A 1966 Elizabethtown College graduate in Secondary Education, Coach Dave also received a Master's degree in Secondary Education/Guidance Counseling in 1969 from Shippensburg University.

Born September 25, 1944, in Carlisle, Pa., Coach Dave is married to the former Linda Miller in 1967. They also have a daughter, Amy, and five grandchildren.

Dave Lebo Quick Sketch

PERSONAL DATA: Born David Brian Lebo in Carlisle, Pa., on Sept. 25, 1944; married to the former Linda Miller of Carlisle, Pa.; two adult children, son, Jeff, and daughter, Amy; five grandchildren.

YEARS AT AUBURN: Fifth. Joined Auburn staff on April 8, 2004.

PREVIOUS COACHING EXPERIENCE: High School – Assistant Coach at East Pennsboro High School in Enola, Pa., for four seasons (1966-70); Head coach at East Pennsboro High School for seven seasons (1970-77); Head coach at Carlisle (Pa.) High School for 19 seasons (1977-88 and 1990-98); College - Head coach at Elizabethtown (Pa.) College for one season (1989-90); College – Assistant coach at Tennessee Tech for four seasons (1998-2002); Assistant coach at Tennessee-Chattanooga for two seasons (2002-04).

EDUCATION: Graduated from Carlisle (Pa.) High School in 1962. B.S. in Secondary Education from Elizabethtown College in 1966. M.S. in Secondary Education/Guidance Counseling from Shippensburg University in 1969.

PLAYING EXPERIENCE: High School – Lettered three years at Carlisle High School (1959-62). College – Four-year letterman at forward at Elizabethtown College (1962-66).





SUPPORT STAFF



Randall Malone Video Coordinator

Randall Malone enters his fifth season at Auburn and his 11th straight under head coach Jeff Lebo.

Malone handles all video operations for the Tigers as well as gameday taping, tape exchange and highlight films.

Malone was the Coordinator of Basketball Operations at Tennessee-Chattanooga for two seasons from 2002-04 prior to coming to Auburn. He was also the resident assistant at UTC for those two years as well as the assistant team camp and individual camp director at the UTC Basketball Camp. The Mocs went 40-20 in both years and were two-time Southern Conference Tournament runners-up.

Malone was a four-year manager under Lebo for the Tennessee Tech basketball team from 1999-2002, including the last two years as head manager. He was a team camp assistant for three years at the Tennessee Tech Basketball Camp from 1999-2001.

Malone was a camp counselor at the Eddie Fogler Basketball Camp in 2000 at the University of South Carolina and the Roy Williams Basketball Camp in 2001 at the University of Kansas.

The Portland, Tenn., native earned a B.S. degree in Civil Engineering from Tennessee Tech in 2001. He was born Aug. 29, 1977.



Trey Strickland Graduate Assistant/ Manager

Trey Strickland enters his second season as Graduate Assistant/Manager under coach Jeff Lebo.

He spent the previous two years as a student manager, including co-head manager in 2006-07. He worked as

a camp counselor at Auburn as well as other colleges and high schools throughout the Southeast.

Strickland walked-on to the University of South Alabama basketball team as a freshman before being medically disqualified and then transferred to Auburn in 2003.

He was a three-year starter at Faith Academy in Mobile, Ala., where he was named first-team all-state and was a *Birmingham News* Super Senior in 2002.

The Mobile, Ala., native earned a B.S. degree in Exercise Science from Auburn University in 2007. Born Dec. 22, 1983, he is the son of Fred and Melissa Strickland. His sister, Rebekah, plays volleyball at the University of Memphis.



Bryan Karkoska Head Strength & Conditioning Coach

Bryan Karkoska enters his 12th year at Auburn as the Head Strength & Conditioning Coach and his fifth under coach Jeff Lebo.

Karkoska has worked with the Auburn Basketball program for 13 years, including two as a graduate assistant from 1994-96.

The Chicago, Ill., native was a two-year letterman as a place-kicker for the 1992 and 1993 Auburn football teams. The 1993 Tigers had a perfect 11-0 season.

Karkoska has developed many Auburn basketball players that have gone on to play professionally including Marquis Daniels and Jamison Brewer of the Indiana Pacers, Pat Burke of the Phoenix Suns, Mamadou N'diaye of the Los Angeles Clippers and many others that have played overseas.

Karkoska earned a B.S. degree in Exercise Science from Auburn University in 1994 and a M.Ed. in Exercise Physiology from Auburn in 1996. He is a member of the National Strength & Conditioning Association where he is a Certified Strength & Conditioning Specialist as well as a member of the Collegiate Strength & Conditioning Coaches Association.

Born May 27, 1971, Karkoska is a die-hard Chicago Blackhawks fan.



Garret Thorington Graduate Assistant/ Manager

Garret Thorington enters his second season as Graduate Assistant/Manager under coach Jeff Lebo.

He spent the previous two years as a student manager, including co-head

manager last year.

The Manchester, Tenn., native earned a B.S. degree in Health Promotions from Auburn University in August 2006. Born Apr. 26, 1984, he is the son of Jim and Debra Thorington. He has an older brother, Jacob, and a younger sister, Kimberly, who is a manager for the Auburn women's soccer team.

2008-09 Outlook
2008-09 Tigers
Coaching Staff
Coliseum
2007-08 Review
2007-08 Tiger Records
AU Hoop History
Tiger Tracks
Administration

SUPPORT STAFF



Keith Bagwell
Dir., Facilities Operations



Keydrick Barlow
Manager



Stephen Baugh
Manager



Dale Calloway
Equipment Room Assistant



Cole Cunningham
Video Manager



Dianne Daughtrey
Basketball Secretary



Myers Dean
Manager



Chuck Gallina
Director, Media Relations



Robert Gottesman
Scorer's Table Crew



Jarod Grace
Head Basketball Athletic Trainer



Whit Guerin
Stats Crew



Kathy Harker
Media Relations, Administrative Asst.



Dianne Harper
Stats Crew



Ellyn Hix
Stats Crew



Megan McGowan
Stats Crew



Alex Pederson
Manager



Jeff Peppers
Stats Crew



Kirsten Perkins
Academic Counselor/ Learning Specialist



Bobby Poole
Stats Crew



Mark Richard
Senior Associate AD, Team Support



Becky Richardson
Stats Crew



Jeremy Roberts
Manager



Randy Roberts
Chaplain



Kevin Robinson
Scorer's Table Crew



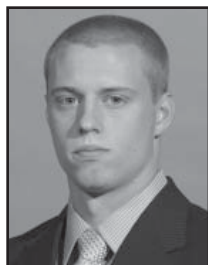
Steve Sain
Media Relations, Video Contact



Francis Sanda
Official Scorer



Jon Sirico
Dir., Marketing



Garreth Trawick
Manager



Todd Van Emst
Photographer



Chick Wade
Scorer's Table Crew