



# 2024 AUBURN SOCCER

AUBURN ATHLETICS COMMUNICATIONS: 392 SOUTH DONAHUE DRIVE || AUBURN, AL 36830 || AUBURNTIGERS.COM || @AUBURNSOCCER

## REGULAR SEASON SCHEDULE

Overall Record: 1-0-0

SEC Record: 0-0-0

H: 1-0-0 // A: 0-0-0 // N: 0-0-0

Date	Opponent	Time/Result
Aug. 7	at Mercer (Exh.)	L, 0-3
Aug. 10	#10 Memphis (Exh.)	L, 0-1
Aug. 15	#5 Clemson	W, 4-0
Aug. 22	<b>Southern Miss</b>	6:30 p.m.
Aug. 25	<b>Coastal Carolina</b>	2 p.m.
Aug. 29	at South Alabama	7 p.m.
Sept. 1	<b>App State</b>	1 p.m.
Sept. 5	at Samford	6 p.m.
Sept. 8	<b>Ohio State</b>	11 a.m.
Sept. 13	<b>Old Dominion</b>	6:30 p.m.
Sept. 19	<b>Vanderbilt</b>	6:30 p.m.
Sept. 22	<b>Florida</b>	2 p.m.
Sept. 26	at Texas A&M	7 p.m.
Sept. 29	<b>Ole Miss</b>	2 p.m.
Oct. 4	at LSU	7 p.m.
Oct. 10	<b>Alabama</b>	6 p.m.
Oct. 13	at Tennessee	1 p.m.
Oct. 18	at Kentucky	6 p.m.
Oct. 24	<b>Georgia</b>	6:30 p.m.
Oct. 27	at South Carolina	3 p.m.

all times central // home games in bold



### vs. Southern Miss

Thursday, August 22 • 6:30 p.m. CT



Site	Auburn, Ala.
Venue	Auburn Soccer Complex (1,500)
TV	SEC Network+ (Brit Bowen + Nick Flohre)
Live Game Updates	@AuburnSoccer (X/Twitter)
Series vs. Southern Miss	Auburn leads, 2-1-0
Series in Auburn	Auburn leads, 2-1-0
Last Three	Auburn leads, 2-1-0
Last Meeting	Southern Miss 0, at Auburn 9 (Aug. 21, 2022)

## INSIDE THE MATCHUP

### AUBURN TIGERS

Rankings	USC: 15   TopDrawer: 13
2023 RPI	72
2023 Record	8-7-5
SEC	3-4-3
Home	5-2-2
Away	2-4-3
Neutral	1-1-0
Head Coach	Karen Hoppa
Record at Auburn	281-188-56
Overall Record	345-232-65
Record vs. USM	2-1-0
2023 Team Leaders	
Goals	S. Richards/Haddock (4)
Assists	Haddock (7)
Points	Haddock (15)
Shooting Pct. (10 shots)	Arias, Simpson (.200)
Saves	Prohaska (67)
GAA	Prohaska (1.12)
Minutes	Knox (1,787)

### SOUTHERN MISS GOLDEN EAGLES

Rankings	USC: UR   TopDrawer: UR
2023 RPI	171
2023 Record	6-9-3
Sun Belt	3-4-3
Home	5-2-2
Away	1-6-1
Neutral	0-1-0
Head Coach	Mohammed El-Zare
Record at USM	77-89-28
Overall Record	77-89-28
Record vs. Auburn	1-2-0
2023 Team Leaders	
Goals	Nakano (7)
Assists	Nakano (4)
Points	Nakano (18)
Shooting Pct. (10 shots)	Nakano (.389)
Saves	Helbling (61)
GAA	Helbling (1.58)
Minutes	Collum (1,538)

## BY THE NUMBERS



<b>26</b>	<b>22</b>	<b>105</b>	<b>73</b>	<b>67</b>	<b>7</b>	<b>7   0</b>
-----------	-----------	------------	-----------	-----------	----------	--------------

GOALS SCORED

GOALS ALLOWED

SHOTS ON GOAL

CORNER KICKS

SAVES

SHUTOUTS

Y | R CARDS



<b>25</b>	<b>31</b>	<b>86</b>	<b>66</b>	<b>71</b>	<b>3</b>	<b>24   3</b>
-----------	-----------	-----------	-----------	-----------	----------	---------------

**A CLOSER LOOK**

Auburn	Value
Goals	4
Assists	2
Points	10
Goals per Game	4
Assists Per Game	2
Shots Per Game	13
SOG Per Game	8
Shooting %	0.308
Saves Per Game	4
Save Percentage	1.000
GAA	0.00
Shutout Percentage	1.000
Shutouts	1
Goals Allowed	0

Southern Miss	Value
Goals	5
Assists	4
Points	14
Goals per Game	5
Assists Per Game	4
Shots Per Game	43
SOG Per Game	20
Shooting %	0.116
Saves Per Game	3
Save Percentage	1.000
GAA	0.00
Shutout Percentage	1.000
Shutouts	1
Goals Allowed	0

NCAA Leaders	Value
Goals	Florida State (15)
Assists	Illinois (13)
Points	Florida State (42)
Goals per Game	Indiana State (10.00)
Assists Per Game	Indiana State (10.00)
Shots Per Game	Southern Miss (43.00)
SOG Per Game	Indiana State (24.00)
Shooting %	Marist (1.000)
Saves Per Game	UAPB (20.00)
Save Percentage	60 tied (1.000)
GAA	66 tied (0.00)
Shutout Percentage	65 tied (1.000)
Shutouts	Grambling (3)
Goal Differential	Florida State (+15)

**SERIES RECORDS**

TEAM	Value
goals scored	9 goals (Aug. 21, 2022)
at home	9 goals (Aug. 21, 2022)
on the road	
goals conceded	2 goals (Sept. 13, 2019)
at home	2 goals (Sept. 13, 2019)
on the road	
consecutive wins	
consecutive draws	
consecutive losses	

**HELLO MY NAME IS: AUBURN SOCCER NICKNAME GUIDE**

» Don't ask, just observe.

(0) Madeline Moore	"Moozle"	(16) Dylan Driver	"Dilly, Dyl Pickle"
(00) Madie Prohaska	"Nut, Crumbs"	(17) Maddy Bondon	"Bing Bong, Bonnie"
(1) Ayana Yapo	"A"	(18) Jaycie Silhan	"JC"
(3) Shelby Sallee	"Shelby"	(19) Maddie Stoddard	"Stod, Stoddy"
(4) Anna Haddock	"Nan, Nae Nae"	(20) Hayden Colson	"Denny"
(5) Jessica Osborne	"Jessie"	(21) Ciara Brown	"C"
(6) Becky Contreras	"Becky"	(22) Olivia Woodson	"Liv"
(7) Carly Thatcher	"Carl"	(23) Olivia Candelino	"Cando"
(8) Mallory Mooney	"Mal, Mallard"	(24) Lily Borders	"Lil"
(9) Jessica Askey	"Jess"	(25) Gracie Brown	"Gracie"
(10) Sammie Brown	"Shmeal"	(27) Ava Caldwell	"Ava, Mort"
(11) LJ Knox	"Juice"	(28) Erin Houston	"Ern, E-Money"
(12) Haley Duca	"Dukey, Dukes"	(31) Jordyn Crosby	"Jordyn"
(13) Taylor Richards	"T Rich, Trish"	(77) Mya Williams	"Mya"
(14) Rory Schank	"Rory"	(78) Jenna Sapong	"Jennifer, Jenna"
(15) Sydnie Thibodaux	"Thibs"		

## LAST MEETING'S BOX SCORE

Southern Miss. (1-1-0, 0-0-0) -vs- Auburn (2-0-0, 0-0-0)  
08/21/2022 at Auburn, Ala. (Auburn Soccer Complex)

Date: 08/21/2022

Attendance: 503

Stadium: Auburn Soccer Complex

Officials: Referee, Jonathan Weiner Asst. Referee, Chris McCorkhill Asst. Referee, Nicole Sahai Alt. Official, Kyle Johnston

## Goals By Period

	1	2	Total
Southern Miss.	0	0	0
Auburn	3	6	9

## Southern Miss. 0

Pos	#	Player	SH	SOG	G	A	MIN
<b>Starters</b>							
GK	00	Blake, Lena	0	0	0	0	71
FWD	4	Figueroa, Esmeralda	1	1	0	0	54
MID	8	Stewart, Taylor	0	0	0	0	36
MID	10	Stefan, Bernadett	0	0	0	0	64
MID	15	Sishuba, Nolubabalo	2	0	0	0	51
FWD	18	Williamson, Alice	0	0	0	0	27
MID	20	Collum, Tay	0	0	0	0	90
DEF	22	Griffin, Lexi	0	0	0	0	80
DEF	23	Flammia, Madisyn	0	0	0	0	90
DEF	29	Wilson, Natalie	0	0	0	0	45
DEF	30	Gasparovicova, Patricia	0	0	0	0	69
<b>Substitutes</b>							
GK	0	Bruni, Kesaia	0	0	0	0	19
MID	7	Cobyte, Technayda	0	0	0	0	26
MID	11	Nakano, Adaira	0	0	0	0	51
DEF	12	Tapper, Mallory	0	0	0	0	21
FWD	13	Magliocca, Sydney	0	0	0	0	37
DEF	14	Welch, Emily	0	0	0	0	19
MID	17	Kingsley, Blessing	0	0	0	0	34
FWD	19	Gilmore, Grace	0	0	0	0	27
MID	26	Nelson, Elexia	0	0	0	0	27
FWD	31	Boaventura, Julia	0	0	0	0	12
MID	32	Smith, Ryan	1	1	0	0	40
<b>Totals</b>			<b>4</b>	<b>2</b>	<b>0</b>	<b>0</b>	<b>990</b>

#	Goalkeepers	Minutes	GA	Saves
0	Bruni, Kesaia	19:34	2	2
00	Blake, Lena	70:26	7	2
<b>Totals</b>			<b>9</b>	<b>4</b>

Shots By Period	1	2	Total
Southern Miss.	1	3	4
Auburn	10	18	28

Saves By Period	1	2	Total
Southern Miss.	1	3	4
Auburn	0	2	2

## Scoring Summary

Time	Team	Goal Scorer	Assist	Description
07:33	AUB	Maddie Simpson	Sydney Richards	GOAL by AUB Simpson, Maddie Assist by Richards, Sydney.

## Auburn 9

Pos	#	Player	SH	SOG	G	A	MIN
<b>Starters</b>							
GK	00	Prohaska, Maddie	0	0	0	0	90
DEF	0	Moore, Madeline	0	0	0	0	57
DEF	1	Whitaker, Hailey	2	1	1	0	78
MID	4	Haddock, Anna	3	1	1	1	53
MID	9	Waesch, Hannah	0	0	0	2	63
MID	14	Richards, Sydney	1	0	0	2	49
FWD	19	Arias, Marissa	1	0	0	1	56
DEF	20	Colson, Hayden	1	1	1	0	72
DEF	22	Craven, M.E.	2	0	0	0	68
MID	26	Sklopan, Grace	0	0	0	0	47
FWD	32	Simpson, Maddie	2	1	1	0	27
<b>Substitutes</b>							
DEF	3	Tyburczy, Helene	0	0	0	0	27
DEF	5	Berdan, Brooke	1	1	1	0	27
MID	7	Thatcher, Carly	3	3	1	1	48
MID	10	Brown, Sammie	0	0	0	0	37
MID	12	Duca, Haley	1	1	0	0	27
MID	15	Thibodaux, Sydnie	4	1	1	0	41
MID	18	Silhan, Jaycie	1	0	0	0	17
FWD	21	McNeill, Sabrina	4	2	2	0	40
FWD	27	Fout, Olivia	2	1	0	2	17
DEF	28	Houston, Erin	0	0	0	2	49
<b>Totals</b>			<b>28</b>	<b>13</b>	<b>9</b>	<b>11</b>	<b>990</b>

#	Goalkeepers	Minutes	GA	Saves
00	Prohaska, Maddie	90:00	0	2
<b>Totals</b>			<b>0</b>	<b>2</b>

Corner Kicks By Period	1	2	Total
Southern Miss.	2	1	3
Auburn	4	5	9

Fouls By Period	1	2	Total
Southern Miss.	6	4	10
Auburn	1	4	5

## PITCH IT TO ME

### AN AUBURN WIN WOULD...

- » be the program's first time with consecutive victories against the Golden Eagles.
- » be the 14th 2-0 start to a season in program history.

### THE MAGIC DEUCE

- » Auburn has not lost a match in which it has put up at least two goals since Oct. 1, 2021 when it fell to South Carolina 3-2.
- » Since the match, the Tigers are 14-0-1 when scoring twice or more.
- » In its previous 27 matches with two-plus goals, Auburn is 26-1-1.

### SERIES HISTORY

- » Auburn has taken two of the previous three meetings with the Golden Eagles, winning 6-0 in 2013 and 9-0 in 2022. Southern Miss bested the Tigers 2-0 in 2019.
- » Nine players who saw time in the 2022 beatdown (3 starters, 6 bench) are back for the 2024 clash. Auburn also returns five players that accounted for four goals and four assists in said match.
- » In 2022, Maddie Prohaska went the distance between the sticks and made two saves on a pair of on-frame looks.
- » Hayden Colson scored the first and only goal of her career in minute 49. Erin Houston picked up a pair of assists on Auburn's eighth and ninth goals, but has not assisted on a goal-scoring play since.

### HOW CAN SHE ASSIST YOU?

- » Senior midfielder Anna Haddock begins her final season on The Plains sitting on 32 career assists. She stands third in program history behind Maggie Cauley (34) and Katy Frierson (42).
- » Haddock's assists rank 26 clean sheets under her belt. She ranks third in school history, trailing Sarah Le Beau (28) and Megan Rivera (33).
- » Prohaska joins Mississippi State's Maddy Anderson as the only two returning SEC goalkeepers with at least 25 career shutouts.

### SEASON 26, EPISODE 1

- » The fall of 2024 will mark Auburn Soccer's 26th season with head coach Karen Hoppa at the helm. Hoppa is one of 11 active DI coaches with at least 32 years of head coaching experience. Of the 11 coaches, she is one of two who are women (Carin Gabarra - Navy) and one of two in the SEC. (G Guerrieri - Texas A&M)

### TINA TIME

- » Prior to the start of the 2024 season, the Tigers added Christina Wakefield to the coaching staff as an assistant coach.
- » Wakefield spent the 2020 and 2021 seasons at Auburn as a graduate assistant coach before departing to become an assistant at Stephen F. Austin.
- » Wakefield has been tasked with managing a developing Auburn's forward core.

### SOMETHING OLD, SOMETHING NEW

- » This season, Auburn is led by 13 seniors, it's largest senior class in program history. Five players are fourth-years, seven are fifth-years and one is a sixth-year (Becky Contreras).
- » In contrast to its veteran senior class, Auburn also boasts 10 additions to the program this year in the form of eight freshmen and two transfers.

### DIXIELAND DELIGHT

- » Senior Haley Duca is the lone Alabama native on the Auburn roster for the 2024 season.
- » A total of 13 different states are represented on this season's roster led by Georgia with nine players followed by Texas with six players and then Florida with three.

### CODE BROWN

- » Auburn's roster will feature a pair of sisters for the third season in a row as the Tigers welcome freshman Gracie Brown to the squad, the younger sister of senior Sammie Brown.
- » Sammie and Gracie are the daughters of Joe Brown and Nikki Izzo Brown with the latter being the current head coach of the West Virginia women's soccer program.

### PK PROBLEMS

- » During the 2023 season, Auburn was the lone SEC team to not be awarded a single penalty kick.
- » It has been over 720 days since a Tiger has scored a penalty. They have missed their last two.
- » Bri Folds set Auburn's single-season PK record in 2018 when she went 4-for-4 from the spot. Folds also holds the program record with eight career penalties converted.

### SHE'S THE ENGINE

- » Auburn's offensive success begins with Haddock as the Tigers are 13-2-1 all-time in matches which she puts the ball into the back of the net herself.
- » When Haddock is involved in a goal-scoring play, netting a goal or recording an assist, Auburn is 28-3-4.
- » When Haddock records both a goal and an assist in a match, Auburn is 4-1-0.

### SETTING THE TABLE

- » Set pieces have been a friend to the Tigers' offense as of late as 11 of 26 (42.3%) goals scored during the 2023 season came directly from a set piece or via a play that directly followed a set piece.
- » Five goals via corner kick (G1 vs Troy, G2 at Syracuse, G1 vs American, G2 vs LSU, G2 vs Tennessee)
- » Three goals via free kick (G1 vs Missouri, G1 vs. Arkansas (Oct. 8), G1 vs LSU)
- » Three goals via throw-in (G3 vs Troy, G2 at Army, G2 vs Missouri)
- » Auburn scored one of its season-opening four goals via a corner kick. Becky Contreras headed in the serve from Anna Haddock in the 66th minute.

### SEC PRESEASON COACHES' POLL

- » Auburn was selected to finish 11th in the 2024 SEC preseason coaches' poll.
- » The league's 16 head coaches voted to determine the following order:

1. Arkansas
2. Texas
3. Georgia
3. South Carolina
5. Alabama
6. Mississippi State
7. Texas A&M
8. Tennessee
9. Vanderbilt
10. LSU
11. Auburn
12. Kentucky
13. Florida
13. Oklahoma
15. Ole Miss
16. Missouri

### AUBURN VS SUNBELT TEAMS...

- » is 30-2-0 all-time.
- » is 22-0-0 at home.
- » most-common opponent: South Alabama (14-1-0)
- » losses to Sunbelt teams - South Alabama, 1-0 (1994) + Georgia Southern, 1-2 (1993).
- » Southern Miss was not a member of the Sunbelt during the 2019 loss.

### SEC DEFENSIVE POTW

- » After leading the shutout of No. 5 Clemson, Maddie Prohaska was named SEC Soccer Co-Defensive Player of the Week for the fourth time in her career. She shares this week's honor with Jordan Brown of Georgia.

**TEAM SCHEDULE AND MEDIA AVAILABILITY » WEEK OF AUGUST 13**

TUESDAY Aug 20	WEDNESDAY Aug 21	THURSDAY Aug 22	FRIDAY Aug 23	SATURDAY Aug 24	SUNDAY Aug 25	MONDAY Aug 26
<b>OFF DAY</b> No Media	<b>TRAINING</b> 1:30 - 4:30 p.m.  <b>FILM</b> 4:45 - 5 p.m.	<b>GAMEDAY</b> vs Southern Miss, 6:30 p.m.	<b>FILM</b> 12:45 - 1 p.m.  <b>TRAINING</b> 1:45 - 3:45 p.m.	<b>TRAINING</b> 9 a.m. - 12 p.m.  <b>WORKOUTS</b> 12:15 p.m. - 1 p.m.	<b>GAMEDAY</b> vs Coastal Carolina, 2 p.m.	<b>TRAINING</b> 1:45 p.m. - 4:30 p.m.  <b>FILM</b> 4:45 - 5:45 p.m.

**AUBURN ATHLETICS COMMUNICATIONS**

**AUBURNTIGERS.COM**

For updated game notes, statistics and latest information on Auburn soccer and Auburn Athletics, visit AuburnTigers.com.

**INTERVIEW POLICY**

Coach Hoppa, assistant coaches and select student-athletes are available for interviews by contacting Tucker Cleverdon in the communications office. Specific interview request should be made at least 24 hours in advance to ensure availability. Additional requests will be granted based on student-athlete availability throughout the week.

Postgame interviews with Coach Hoppa and requested players will be conducted in-person following a brief cool-down period. Interviews will be conducted out front of the white tent on the west end of the field.

**GAMEDAY / PRESS SERVICES**

Press releases, statistics and game information will be available each week via AuburnTigers.com/Soccer. Media members may request to be added to email lists to automatically receive up-to-date information on Auburn soccer. Notes and statistics will be available digitally. A limited number of printed copies of game notes, statistics and box scores will be available on gamedays. Wireless internet is available at the Auburn Soccer Complex.

**VIDEO SERVICES**

FTP feeds of selected Auburn soccer highlights are available for the media. A number of studio and satellite services may be arranged for electronic media by emailing Matt Florczyk at msf0025@auburn.edu.

**PHOTOGRAPHY**

For photos of Auburn soccer or Auburn Athletics, contact Tucker Cleverdon via email at jtc0080@auburn.edu. Credentials to shoot Auburn soccer will be issued to only accredited photographers on assignment. Photographers may only shoot in the designated areas.

**CREDENTIALS**

While credentials are not needed to attend, space at the Auburn Soccer Complex is limited, thus media members wishing to cover Auburn soccer should contact Tucker Cleverdon at least 24 hours prior to each home contest. Limited field access will be granted for photography and videography.

**ACADEMIC MAJORS**

Player.....	Major
Askey, Jessica.....	Pre-Medicine
Bondon, Maddy.....	Business Administration
Borders, Lily.....	Exercise Science
Brown, Ciara.....	Pre-Nursing
Brown, Gracie.....	Exploratory
Brown, Sammie.....	Health Sciences
Caldwell, Ava.....	Global Studies in Human Sciences
Candelino, Olivia.....	Admin. of Supervision & Curriculum
Colson, Hayden.....	Nutrition & Dietetics
Contreras, Becky.....	Admin. of Supervision & Curriculum
Crosby, Jordyn.....	Pre-Computer Science
Driver, Dylan.....	Biomedical Sciences
Duca, Haley.....	Health Services Administration
Haddock, Anna.....	Business Administration
Houston, Erin.....	Computer Science
Knox, LJ.....	Human Development & Family Science
Mooney, Mallory.....	Management
Moore, Madeline.....	Integrative Biology
Osborne, Jessica.....	Pre-Journalism
Prohaska, Maddie.....	Adult Education
Richards, Taylor.....	Psychology
Sallee, Shelby.....	Business Analytics
Sapong, Jenna.....	Pre-Mechanical Engineering
Schank, Rory.....	Exercise Science
Silhan, Jaycie.....	Biomedical Sciences
Stoddard, Maddie.....	Political Science
Thatcher, Carly.....	Biomedical Sciences
Thibodaux, Sydnie.....	Exercise, Performance & Health
Williams, Mya.....	Pre-Business
Woodson, Olivia.....	Exercise Science
Yapo, Ayana.....	Aviation Management

**UNIVERSITY INFORMATION**

City..... Auburn, Ala.  
 Founded..... 1856  
 Enrollment..... 31,526  
 Nickname..... Tigers  
 Colors..... Burnt Orange & Navy Blue  
 Affiliation..... NCAA Division I  
 Conference..... Southeastern (SEC)  
 Stadium..... Auburn Soccer Complex  
 Capacity..... 1,500  
 President..... Dr. Christopher B. Roberts  
 Athletics Director..... John Cohen

**ATHLETICS COMMUNICATIONS**

Tucker Cleverdon..... SID  
 Email..... jtc0080@auburn.edu  
 Cell..... 251-923-9002  
 Kirk Sampson...Senior Associate AD Communications  
 Email..... sampska@auburn.edu  
 Web..... AuburnTigers.com  
 X/Twitter..... @AuburnSoccer  
 Instagram..... @AuburnSoccer  
 TikTok..... @AuburnSoccer  
 Facebook..... /AuburnSoccer  
 Office Phone..... 334-844-9800

**STAFF INFORMATION**

**Coaches**

Head..... Karen Hoppa (UCF, 1990)  
 Asso. Head..... Ben Madsen (Lincoln Memorial, 2003)  
 Asso. Head..... Kelly Madsen (South Alabama, 2008)  
 Assistant..... Christina Wakefield (Boston, 2018)

**Support Staff**

Sport Administrator..... Courtney Gage  
 Director of Ops..... Amy Reif  
 Athletic Trainer..... Madeline Warner  
 Sports Performance Coach..... Matt Smith  
 Sport Psychologist..... Dr. Jack Roberts  
 Sports Information Director..... Tucker Cleverdon  
 Equipment..... Erika Wagner  
 Dietician..... Cam Fritsch  
 Graduate Assistant..... Caroline Todes

# ROSTER

## BY JERSEY NUMBER

No.	Name	Pos.	Ht.	Year	Hometown (High School/Previous School)
0	Madeline Moore	D	5-9	5th	Winter Haven, Fla. (Winter Haven Senior)
00	Maddie Prohaska	GK	5-11	Gr	West Chester, Ohio (Lakota West)
1	Ayana Yapo	GK	5-8	Fr.	Phoenix, Ariz. (Verrado)
3	Shelby Sallee	F	5-7	R-Jr.	Strongsville, Ohio (Strongsville/Xavier)
4	Anna Haddock	MF	5-5	Gr.	Bowling Green, Ky. (Greenwood)
5	Jessica Osborne	D	6-0	So.	Summerville, S.C. (Pinewood Prep)
6	Becky Contreras	MF/F	5-6	R-Sr.	Dacula, Ga. (Dacula/Kennesaw State)
7	Carly Thatcher	F/MF	5-2	Sr.	Greer, S.C. (Riverside)
8	Mallory Mooney	D	5-2	5th	Broomfield, Colo. (Broomfield)
9	Jessica Askey	D	5-2	Fr.	Johns Creek, Ga. (Chattahoochee)
10	Sammie Brown	MF	5-3	5th	Morgantown, W.Va. (Morgantown)
11	LJ Knox	D	5-10	Sr.	Brentwood, Tenn. (Brentwood Academy)
12	Haley Duca	D	5-2	Sr.	Chelsea, Ala. (Chelsea)
13	Taylor Richards	GK	5-8	R-So.	Plano, Texas (Plano Senior)
14	Rory Schank	MF	5-9	Fr.	Flower Mound, Texas (Flower Mound)
15	Sydney Thibodaux	MF	5-5	Sr.	Montgomery, Texas (Lake Creek)
16	Dylan Driver	F	5-11	R-So.	Macon, Ga. (Stratford Academy)
17	Maddy Bondon	MF/D	5-4	Gr.	Duluth, Ga. (Peachtree Ridge)
18	Jaycie Silhan	F	5-11	Sr.	Spring, Texas (Klein Oak)
19	Maddie Stoddard	F	5-1	Fr.	Cumming, Ga. (Denmark)
20	Hayden Colson	MF/D	5-8	Jr.	Denton, Texas (John H. Guyer)
21	Ciara Brown	F	5-7	Fr.	Wyandanch, N.Y. (Half Hollow Hills West)
22	Olivia Woodson	F	5-4	So.	Richmond, Va. (Monacan)
23	Olivia Candelino	F/MF	5-6	Gr.	Jacksonville, Fla. (The Bolles School)
24	Lily Borders	F/MF	5-7	Fr.	Lake Wales, Fla. (Lake Wales)
25	Gracie Brown	MF	5-4	Fr.	Morgantown, W.Va. (Morgantown)
27	Ava Caldwell	MF	5-4	Fr.	Watkinsville, Ga. (North Oconee)
28	Erin Houston	D	5-9	Jr.	Kennesaw, Ga. (Harrison)
31	Jordyn Crosby	F	5-6	So.	Alpharetta, Ga. (Denmark)
77	Mya Williams	F	5-5	R-Fr.	Carrollton, Texas (Hebron)
78	Jenna Sapon	GK	5-8	R-Fr.	Johns Creek, Ga. (Northview)

Head Coach: Karen Hoppa (26th season at Auburn, 32nd overall)  
 Associate Head Coach: Ben Madsen (13th season at Auburn)  
 Associate Head Coach: Kelly Madsen (2nd season at Auburn)  
 Assistant Coach: Christina Wakefield (1st season at Auburn)  
 Director of Operations: Amy Reif (7th season at Auburn)

## BY NAME

No.	Name	Pos.
9	Jessica Askey	D
17	Maddy Bondon	MF/D
24	Lily Borders	F/MF
21	Ciara Brown	F
25	Gracie Brown	MF
10	Sammie Brown	MF
27	Ava Caldwell	MF
23	Olivia Candelino	F
20	Hayden Colson	MF/D
6	Becky Contreras	MF/F
31	Jordyn Crosby	F
16	Dylan Driver	F
12	Haley Duca	D
4	Anna Haddock	MF
28	Erin Houston	D
11	LJ Knox	D
8	Mallory Mooney	D
0	Madeline Moore	D
5	Jessica Osborne	D
00	Maddie Prohaska	GK
13	Taylor Richards	GK
3	Shelby Sallee	F
78	Jenna Sapon	GK
14	Rory Schank	MF
18	Jaycie Silhan	F
19	Maddie Stoddard	F
7	Carly Thatcher	F/MF
15	Sydney Thibodaux	MF
77	Mya Williams	F
22	Olivia Woodson	F
1	Ayana Yapo	GK

## BY CLASS

### Freshmen (10)

Jessica Askey, Lily Borders, Ciara Brown, Gracie Brown, Ava Caldwell, Rory Schank, Maddie Stoddard, Jenna Sapon, Mya Williams, Ayana Yapo

### Sophomores (5)

Jordyn Crosby, Dylan Driver, Jessica Osborne, Taylor Richards, Olivia Woodson

### Juniors (3)

Hayden Colson, Erin Houston, Shelby Sallee

### Seniors (13)

Maddy Bondon, Sammie Brown, Olivia Candelino, Becky Contreras, Haley Duca, Anna Haddock, LJ Knox, Mallory Mooney, Madeline Moore, Maddie Prohaska, Jaycie Silhan, Carly Thatcher, Sydney Thibodaux,

## PRONUNCIATION GUIDE

Maddy **BONDON** ..... BON-din  
 Ciara **BROWN** ..... see-AIR-ruh  
 Olivia **CANDELINO** ..... can-duh-LEE-no  
 Haley **DUCA** ..... DOO-kah  
 Anna **HADDOCK** ..... HAD-ick  
 Maddie **PROHASKA** ..... pro-HASS-kah  
 Shelby **SALLEE** ..... suh-LEE  
 Jenna **SAPONG** ..... suh-PONG  
 Jaycie **SILHAN** ..... sil-HAN  
 Sydney **THIBODAU**X ..... TIB-ah-dough  
**AYANA YAPO** ..... ay-YAWN-uh YOP-oh  
  
 Amy **REIF** ..... reef

@AUOACHOPPA

# KAREN HOPPA » HEAD COACH

## FAST FACTS

- 26th season at Auburn, 33rd season as a head coach
- 2 SEC Championships (2002, 2011)
- 7 SEC West titles
- 17 NCAA Tournament appearances - 2016 Elite Eight
- League-leading 22 SEC Tournament appearances
- 14 All-Americans
- Husband is Scott, has one daughter, Bailey
- Has one dog, Heidi, and one cat, Callie.

## Career Milestone Matches

First Win .....2-1 vs. Saint Mary's (1993)  
 100th Win ..... 4-0 vs. South Alabama (2002)  
 200th Win ..... 1-0 vs. Alabama (2010)  
 300th Win .....1-0 at Missouri (2018)

## Auburn Milestone Matches

First Win .....4-0 vs. Southwest Texas State (1999)  
 First Ranked Win .....3-1 vs. #23 Marquette (2000)  
 50th Win .....2-0 at Dartmouth (2003)  
 100th Win ..... 1-0 at Mississippi State (2007)  
 150th Win.....3-2 vs. #23 Florida (2011)  
 200th Win .....3-2 vs. #15 Texas Tech (2015)  
 250th Win..... 1-0 vs. Georgia (2021)

## Coaching Record by Year

Year	School	Record
1993	UCF	8-7-1
1994	UCF	13-5-1
1995	UCF	10-7-4
1996	UCF	13-7-1
1997	UCF	8-10-2
1998	UCF	12-8
1999	Auburn	6-13
2000	Auburn	13-7
2001	Auburn	11-8-1
2002	Auburn	15-5-2
2003	Auburn	14-4-3
2004	Auburn	15-4-2
2005	Auburn	8-12-1
2006	Auburn	11-6-3
2007	Auburn	10-8-2
2008	Auburn	12-9-2
2009	Auburn	10-9-3
2010	Auburn	11-8-2
2011	Auburn	15-7-2
2012	Auburn	13-11-1
2013	Auburn	8-9-4
2014	Auburn	12-7-3
2015	Auburn	16-6-1
2016	Auburn	17-7-0
2017	Auburn	8-7-5
2018	Auburn	12-6-2
2019	Auburn	7-10-2
2020	Auburn	10-5-3
2021	Auburn	12-7-1
2022	Auburn	6-6-6
2023	Auburn	8-7-5
2024	Auburn	1-0-0
<b>at UCF</b>		<b>64-44-9</b>
<b>at Auburn</b>		<b>281-188-56</b>
<b>Overall</b>		<b>345-232-65</b>



**AUBURN WHEN...**

<b>Record</b> .....	1-0-0
home.....	1-0-0
away.....	0-0-0
neutral.....	0-0-0
<b>SEC Record</b> .....	0-0-0
home.....	0-0-0
away.....	0-0-0

**Weather**

above 80° .....	1-0-0
below 80° .....	0-0-0
raining .....	0-0-0
sunshine.....	0-0-0
overcast.....	1-0-0

**Rankings**

vs. ranked opponents.....	1-0-0
vs. unranked opponents .....	0-0-0

**Scoring**

scoring first .....	1-0-0
opponent scores first .....	0-0-0
leading at half .....	1-0-0
tied at half.....	0-0-0
trailing at half .....	0-0-0
leading at 70:00 .....	1-0-0
tied at 70:00.....	0-0-0
trailing at 70:00 .....	0-0-0

**Statistics**

outshooting opponent .....	1-0-0
same number of shots .....	0-0-0
outshot by opponent .....	0-0-0
taking more corners.....	0-0-0
same number of corners.....	0-0-0
allowing more corners .....	1-0-0
making more saves.....	0-0-0
same number of saves .....	0-0-0
forcing more saves .....	1-0-0
committing more fouls .....	1-0-0
same number of fouls .....	0-0-0
drawing more fouls.....	0-0-0

**Broadcast**

linear matches .....	0-0-0
digital matches.....	1-0-0
no broadcast/stream .....	0-0-0

**Kits**

field players in navy .....	0-0-0
field players in white .....	1-0-0
keeper in navy .....	0-0-0
keeper in orange .....	0-0-0
keeper in powder blue.....	1-0-0

**Days of the Week**

Sunday.....	0-0-0
Thursday .....	1-0-0
Friday.....	0-0-0

**Month**

August .....	1-0-0
September.....	0-0-0
October.....	0-0-0
November .....	0-0-0
December .....	0-0-0

**THE LAST TIME...**

**AUBURN**

was shutout .....	Oct. 31, 2023 vs. Arkansas
scored 2+ goals .....	Aug. 15, 2024 vs. Clemson
scored 3+ goals .....	Aug. 15, 2024 vs. Clemson
scored 4+ goals.....	Aug. 15, 2024 vs. Clemson
scored 5+ goals.....	Aug. 20, 2023 vs. Troy
shutout an opponent .....	Aug. 15, 2024 vs. Clemson
allowed 2+ goals.....	Oct. 31, 2023 vs. Arkansas
allowed 3+ goals.....	Oct. 31, 2023 vs. Arkansas
allowed 4+ goals.....	Oct. 31, 2023 vs. Arkansas
allowed 5+ goals.....	Nov. 4, 2021 vs. Arkansas
attempted 10+ shots.....	Aug. 15, 2024 vs. Clemson
attempted 20+ shots.....	Sept. 3, 2023 vs. American
attempted 30+ shots.....	Sept. 9, 2021 vs. Alabama A&M
placed 10+ shots on goal .....	Sept. 3, 2023 vs. American
placed 20+ shots on goal .....	Sept. 16, 2018 vs. Alabama State
allowed 0 shots.....	Sept. 9, 2021 vs. Alabama A&M
allowed less than 5 shots.....	Sept. 3, 2023 vs. American
allowed 20+ shots.....	Oct. 31, 2023 vs. Arkansas
took 0 corner kicks.....	Sept. 29, 2023 vs. South Carolina
took 10+ corner kicks.....	Aug. 24, 2023 at Syracuse
allowed 0 corner kicks.....	Sept. 9, 2021 vs. Alabama A&M
allowed 10+ corner kicks.....	Oct. 26, 2023 at Georgia
won in overtime .....	Sept. 23, 2021 at Tennessee
lost in overtime .....	Oct. 10, 2021 vs. LSU
tied in overtime.....	Oct. 24, 2021 at Ole Miss
won a penalty kick shootout .....	Nov. 4, 2015 vs. South Carolina
lost a penalty kick shootout .....	Oct. 28, 2018 vs. Florida

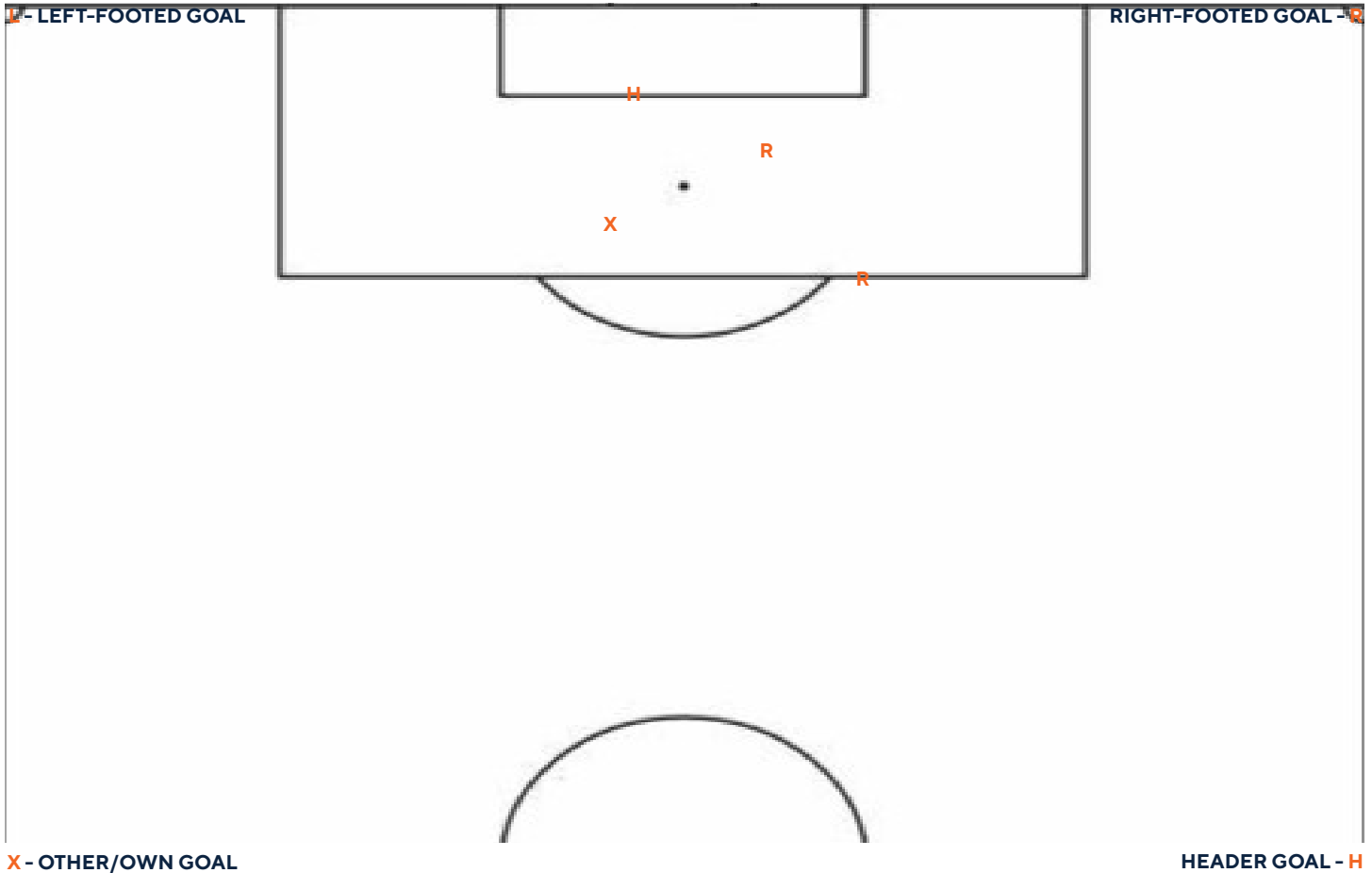
**AN AUBURN PLAYER**

scored a brace (2) .....	Sydney Richards: Sept. 21, 2023 vs. Missouri
scored a hat trick (3).....	Carly Thatcher: Sept. 9, 2021 vs. Alabama A&M
scored a haul (4).....	Tiffany Smith: Sept. 25, 1993 vs. LaGrange College
had 2 assists in a match .....	Anna Haddock: Oct. 22, 2023 vs. LSU
had 3 assists in a match .....	Anna Haddock (4): Feb. 19, 2021 vs. Kennesaw State
had 4+ assists in a match.....	Anna Haddock (4): Feb. 19, 2021 vs. Kennesaw State
took 10+ shots in a match .....	Kristen Dodson (10): Sept. 8, 2017 vs. High Point
made 10+ saves in a match .....	Maddie Prohaska (10): Oct. 30, 2020 vs. Arkansas
made 15+ saves in a match.....	Meredith McPherson (15): Sept. 24, 1994 vs. Arkansas
recorded consecutive shutouts .....	Maddie Prohaska (2): Oct. 22-26, 2023 vs. LSU/at Georgia
goalkeeper goal.....	Karina Micomonaco: Oct. 23, 1993 at West Florida
goalkeeper assist .....	Maddie Prohaska: Oct. 29, 2023 vs. Tennessee
scored a penalty kick.....	Brooke Berdan: Aug. 21, 2022 vs. Southern Miss
saved a penalty kick.....	Sarah Le Beau: Sept. 27, 2021 vs. Florida
got two yellow cards in a match .....	Avery Batson: Nov. 4, 2016 vs. Arkansas
got a red card.....	Maddie Prohaska: Oct. 18, 2020 at Georgia





GOAL GRAPH



AUBURN SCORING BREAKDOWN

SET PIECES		1 G		No.	Scorer (No.)	Opponent	Assist	Time
FREE KICKS	0	1	Own Goal	Clemson	Houston (unofficial)	2:49		
CORNER KICKS	1	2	Driver	Clemson	Mooney	28:13		
GOAL KICKS	0	3	Woodson	Clemson		52:34		
THROW INS	0	4	Contreras	Clemson	Haddock	65:46		
PENALTIES	0							
RUN OF PLAY		3 G						
TRANSITION/COUNTER	2							
CROSS	0							
OUTSIDE THE BOX	0							
DEFLECTION FINISH	0							
OWN GOAL	1							

## AUBURN MATCH-BY-MATCH STATS

Opponent	G	xG	A	PTS	SH	SOG	CK	FO	GA	SV	PASS%
#5 Clemson	4	1.42	2	10	13	8	4	12	0	4	65%

## STARTERS SUMMARY

PLAYER	GS	GK	D	MF	F
Brown, Sammie	1	-	-	1	-
Colson, Hayden	1	-	-	1	-
Haddock, Anna	1	-	-	1	-
Houston, Erin	1	-	1	-	-
Knox, LJ	1	-	1	-	-
Osborne, Jessica	1	-	1	-	-
Mooney, Mallory	1	-	1	-	-
Prohaska, Maddie	1	1	-	-	-
Sallee, Shelby	1	-	-	-	1
Thatcher, Carly	1	-	-	1	-
Woodson, Olivia	1	-	-	-	1

## FORMATION TRACKER

MATCH	STARTING FORMATION	RESULT
vs. #5 Clemson	4-4-2 (diamond)	W, 4-0

## BRACE BOOK

No.	PLAYER	OPPONENT	DATE
1.	Karina Micomonaco (1)	Spring Hill	9/11/93
2.	Tara Wadsworth (1)	at U Mobile	9/14/93
3.	Tiffany Smith (1)	LaGrange College	9/25/93
4.	Tiffany Smith (2)	at Brewton Parker	10/30/93
5.	Maggie Cauley (1)	Georgia Southern	9/27/94
6.	Tiffany Smith (3)	at Georgia State	10/15/94
7.	Jill Palmer (1)	Ole Miss	9/22/95
8.	Jill Palmer (2)	Jacksonville State	9/30/95
9.	Kristen Schier (1)	Arkansas	10/15/95
10.	Maggie Cauley (2)	Arkansas	10/15/95
11.	Jill Palmer (3)	Georgia State	9/4/96
12.	Tiffany Smith (4)	Texas	9/20/96
13.	Jill Palmer (4)	at Jacksonville State	10/15/96
14.	Trudi James (1)	at Jacksonville State	10/15/96
15.	Maggie Cauley (3)	LSU	10/18/96
16.	Becky Robertson (1)	Cal State Sacramento	8/29/97
17.	Jill Palmer (5)	Wyoming	9/7/97
18.	Kristen Schier (2)	Wyoming	9/9/97
19.	Jill Palmer (6)	South Alabama	10/9/97
20.	Kristen Schier (3)	LSU	10/19/97
21.	Meghan Dougherty (1)	LSU	10/19/97
22.	Jill Palmer (7)	Wyoming	9/6/98
23.	Jill Palmer (8)	South Alabama	10/21/98
24.	Tammy Waine (1)	Alabama	10/25/98
25.	Erika Schansberg (1)	at South Alabama	9/15/99
26.	Tammy Waine (2)	LSU	10/17/99
27.	Tammy Waine (3)	Nicholls State	8/27/00
28.	Erika Schansberg (2)	Nicholls State	8/27/00
29.	Tammy Waine (4)	Marquette	9/10/00
30.	Tammy Waine (5)	at Jacksonville State	9/15/00
31.	Ginger Sellick (1)	Mercer	9/26/00
32.	Tammy Waine (6)	Georgia State	8/31/01
33.	Lindsey Hawkins (1)	Chattanooga	9/2/01
34.	Kellie Evans (1)	Middle Tennessee	9/13/02
35.	Jac Schwarz (1)	South Alabama	9/15/02
36.	Sarah Power (1)	at UMass	9/22/02
37.	Sarah Power (2)	Mississippi State	10/11/02
38.	Ronda Brooks (1)	at UAB	8/29/03
39.	Sarah Steinmann (1)	Illinois	9/7/03
40.	Chrissy Culver (1)	UAB	8/29/04
41.	Sara Power (3)	Alabama	10/29/04
42.	Ashley Willis (1)	at Mississippi State	10/7/05
43.	Gabi Rivera (1)	Portland State	9/8/06
44.	Kristin Stewart (1)	Mississippi State	10/8/06
45.	Becca Howell (1)	Jacksonville State	8/25/07
46.	Caitlin King (1)	Jacksonville State	8/25/07
47.	Ashley Marks (1)	Pitt	9/9/07
48.	Kara Karsten (1)	LSU	11/7/07
49.	Stephanie Fransoso (1)	Grambling State	8/22/08
50.	Katy Frierson (1)	Mississippi State	10/5/08
51.	Katy Frierson (2)	at Arkansas	10/12/08
52.	Katy Frierson (3)	South Carolina	10/19/08
53.	Caitlin King (2)	Vanderbilt	10/16/09
54.	Becca Howell (2)	Georgia	10/25/09
55.	Julie King (1)	Cal State Fullerton	9/12/10
56.	Mary Coffed (1)	Middle Tennessee	8/26/11
57.	Ana Cate (1)	at Samford	9/9/11
58.	Katy Frierson (4)	at Florida	11/6/11
59.	Tori Ball (1)	High Point	8/19/12
60.	Bianca Sierra (1)	Texas Tech	9/8/12
61.	Mary Coffed (2)	Alabama	10/25/12
62.	Tatiana Coleman (1)	Alabama	10/25/12
63.	Casie Ramsier (1)	UAB	8/28/15
64.	Casie Ramsier (2)	LSU	9/25/15
65.	Casie Ramsier (3)	Florida	9/27/15
66.	Casie Ramsier (4)	Texas A&M	10/11/15
67.	Casie Ramsier (5)	at Mississippi State	10/29/15
68.	Kristen Dodson (1)	at Samford	8/28/16
69.	Kristen Dodson (2)	at Florida	9/22/16
70.	Kristen Dodson (3)	at Georgia	9/25/16
71.	Casie Ramsier (6)	at LSU	10/20/16
72.	Brooke Ramsier (1)	South Alabama	11/12/16
73.	Kristen Dodson (4)	North Dakota	8/27/17

74.	Kristen Dodson (5)	Kentucky	9/24/17
75.	Kristen Dodson (6)	at Alabama	10/10/17
76.	Bri Folds (1)	at Samford	8/16/18
77.	Treva Aycocock (1)	Mississippi State	9/14/18
78.	Sarah Houchin (1)	Maryland	8/30/19
79.	Sydney Richards (1)	Troy	9/8/19
80.	Anna Haddock (1)	BYU	8/21/21
81.	Sydney Richards (2)	UAB	9/2/21
82.	Olivia Candelino (1)	Chattanooga	9/5/21
83.	Marissa Arias (1)	Alabama A&M	9/9/21
84.	Anna Haddock (2)	Georgia	9/17/21
85.	Sabrina McNeill (1)	Southern Miss	8/21/22
86.	Sydney Richards (3)	Troy	8/20/23
87.	Olivia Woodson (1)	American	9/3/23
88.	Sydney Richards (4)	Missouri	9/21/23

### HAT TRICK TRACKER

No.	PLAYER	OPPONENT	DATE
1.	Kristen Lampe	at LaGrange	10/13/93
2.	Kathy Fey	at Troy	9/23/97
3.	Maggie Cauley	Jacksonville State	10/28/97
4.	Erika Schansberg	Mississippi State	9/25/98
5.	Erika Schansberg	Southwest Texas State	9/3/99
6.	Tammy Waine	Alabama A&M	8/25/00
7.	Tammy Waine	Charlotte	9/1/00
8.	Ginger Sellick	at South Carolina	10/20/00
9.	Kara Karsten	Mississippi State	10/5/08
10.	Tatiana Coleman	Kennesaw State	8/28/11
11.	Casie Ramsier	Tennessee	11/2/16
12.	Mallory Mooney	Virginia Tech	4/17/21
13.	Carly Thatcher	Alabama A&M	9/9/21

### HAUL CALL

No.	PLAYER	OPPONENT	DATE
1.	Tiffany Smith	LaGrange	9/25/93

PLAYER CAPSULES



**MADELINE MOORE**

**0**

**DEFENDER**

**5th | 5-9**

**Winter Haven, Fla. | Winter Haven Senior HS**

**SEASON HIGH**

**CAREER HIGH**

MINS .....110, vs. LSU (2/26/21)  
 G.....  
 A.....1 (4x), last vs. UMass Lowell (9/8/22)  
 PTS.....1 (4x), last vs. UMass Lowell (9/8/22)  
 SH.....1 (4x), last vs. American (9/3/23)  
 SOG.....

**SEASON HIGHLIGHTS**

Expected to miss 2024 due to ACL injury suffered in the spring.

**2023 GAME BY GAME**

**#0 MOORE, Madeline**

Date	Opponent	SCORE	GP	GS	G	A	PTS	SH	SH%	SOG	SOG%	GW	PK-ATT	YC	RC	MIN
08/17/2023	Samford	0-0	*	*	0	0	0	0	.000	0	.000	0	0-0	0	0	89
08/20/2023	Troy	5-0	*	*	0	0	0	0	.000	0	.000	0	0-0	0	0	65
08/24/2023	at Syracuse	2-1	*	*	0	0	0	0	.000	0	.000	0	0-0	0	0	85
08/27/2023	at Army West Point	3-2	*	*	0	0	0	0	.000	0	.000	0	0-0	0	0	90
08/31/2023	Wake Forest	0-2	*	*	0	0	0	1	.000	0	.000	0	0-0	0	0	90
09/03/2023	American	3-0	*	*	0	0	0	1	.000	0	.000	0	0-0	0	0	78
09/07/2023	at West Virginia	1-1	*	*	0	0	0	0	.000	0	.000	0	0-0	0	0	71
<b>Totals</b>		<b>14-6</b>	<b>7</b>	<b>7</b>	<b>0</b>	<b>0</b>	<b>0</b>	<b>2</b>	<b>.000</b>	<b>0</b>	<b>.000</b>	<b>0</b>	<b>0-0</b>	<b>0</b>	<b>0</b>	<b>566</b>

**Player Averages**

Games Played	Shots per game	Assists per game	Goals per game	Points per game
7	0.29	0.00	0.00	0.00

**MOORE'S CAREER STATS**

SEASON	TEAM	GP-GS	Min.	G	A	Pts	Shot	Shot%	SOG	SOG%	GW	PK-Att
2020-21	AUB	18 - 18	1399:32	0	1	1	2	.000	0	.000	0	0 - 0
2021-22	AUB	8 - 8	602:47	0	2	2	0	.000	0	.000	0	0 - 0
2022-23	AUB	18 - 18	1519:32	0	1	1	0	.000	0	.000	0	0 - 0
2023-24	AUB	7 - 7	565:07	0	0	0	2	.000	0	.000	0	0 - 0
<b>TOTAL</b>		<b>51 - 51</b>	<b>4086:59</b>	<b>0</b>	<b>4</b>	<b>4</b>	<b>4</b>	<b>.000</b>	<b>0</b>	<b>.000</b>	<b>0</b>	<b>0 - 0</b>

PLAYER CAPSULES



**MADDIE PROHASKA**

**00**

**GOALKEEPER**  
**Gr. | 5-11**  
**West Chester, Ohio | Lakota West HS**

**SEASON HIGH**

**CAREER HIGH**

90, vs. Clemson (8/15)..... **MINS** ..... 110 (4x), last at Ole Miss (10/24/21)  
 0, vs. Clemson (8/15)..... **GA** ..... 5, vs. Arkansas (11/4/21)  
 4, vs. Clemson (8/15)..... **SV** ..... 10, at Arkansas (10/30/20)  
 10, vs. Clemson (8/15)..... **SF** ..... 21, at Arkansas (9/22/22)

**SEASON HIGHLIGHTS**

Made four clutch saves in the season-opening upset against No. 5 Clemson, holding the Tigers scoreless for just the second time in their previous 17 regular season matches.

**GAME BY GAME**

Date	Opponent	SCORE	GP	GS	Minutes	GA	GA AVG	Saves	Save%	W	L	T	SHO/CBO
08/15/2024	Clemson	4-0	*	*	90:00	0	0.00	4	1.000	1	0	0	1/0
<b>Totals</b>			<b>1</b>	<b>1</b>	<b>90:00</b>	<b>0</b>	<b>0.00</b>	<b>4</b>	<b>1.000</b>	<b>1</b>	<b>0</b>	<b>0</b>	<b>1/0</b>

**PROHASKA'S CAREER STATS**

SEASON	TEAM	GP-GS	Minutes	GA	GA Avg	Saves	Save%	W	L	T	SHO/CBO
2020-21	AUB	17 - 17	1573:17	14	0.81	75	.843	8	5	2	6/2
2021-22	AUB	20 - 20	1832:38	24	1.18	56	.700	12	7	1	7/0
2022-23	AUB	18 - 18	1584:45	13	0.74	61	.824	6	6	6	7/0
2023-24	AUB	20 - 20	1766:45	22	1.13	67	.753	8	7	5	5/2
2024-25	AUB	1 - 1	90:00	0	0	4	1.000	1	0	0	1/0
<b>TOTAL</b>		<b>76 - 76</b>	<b>6847:25</b>	<b>73</b>	<b>0.96</b>	<b>263</b>	<b>.783</b>	<b>35</b>	<b>25</b>	<b>14</b>	<b>26/4</b>

PLAYER CAPSULES



**AYANA YAPO**

**1**

**GOALKEEPER**

Fr. | 5-8

Phoenix, Ariz. | Verrado HS

**SEASON HIGH**

**CAREER HIGH**

MINS

GA

SV

SF

SEASON HIGHLIGHTS

Empty box for season highlights.

GAME BY GAME

YAPO'S CAREER STATS



PLAYER CAPSULES



**SHELBY SALLEE** **3**  
**FORWARD**  
**R-Jr. | 5-7**  
**Strongsville, Ohio | Strongsville HS | Xavier**

**SEASON HIGH** **CAREER HIGH**  
 58, vs. Clemson (8/15)..... **MINS** .....61, at Bowling Green (9/16/21)  
 ..... **G** .....2, at Pitt (9/7/23)  
 ..... **A** .....1 (4x), last vs. St. John's (10/15/23)  
 ..... **PTS** .....4, at Pitt (9/7/23)  
 1, vs. Clemson (8/15)..... **SH** .....7, at Seton Hall (10/7/21)  
 ..... **SOG** .....5, at Pitt (9/7/23)

SEASON HIGHLIGHTS

GAME BY GAME

Date	Opponent	SCORE	GP	GS	G	A	PTS	SH	SH%	SOG	SOG%	GW	PK-ATT	YC	RC	MIN
08/15/2024	Clemson	4-0	*	*	0	0	0	1	.000	0	.000	0	0-0	0	0	58
<b>Totals</b>		<b>4-0</b>	<b>1</b>	<b>1</b>	<b>0</b>	<b>0</b>	<b>0</b>	<b>1</b>	<b>.000</b>	<b>0</b>	<b>.000</b>	<b>0</b>	<b>0-0</b>	<b>0</b>	<b>0</b>	<b>58</b>

SALLEE'S CAREER STATS

SEASON	TEAM	GP-GS	Min.	G	A	Pts	Shot	Shot%	SOG	SOG%	GW	PK-Att
2021-22	XU	20 - 0	935:54	4	3	11	36	.111	16	.444	1	0 - 0
2023-24	XU	22 - 4	945:10	7	1	15	50	.140	30	.600	1	0 - 0
2024-25	AUB	1 - 1	57:59	0	0	0	1	.000	0	.000	0	0 - 0
<b>TOTAL FOR AUB</b>		<b>1 - 1</b>	<b>57:59</b>	<b>0</b>	<b>0</b>	<b>0</b>	<b>1</b>	<b>.000</b>	<b>0</b>	<b>.000</b>	<b>0</b>	<b>0 - 0</b>
<b>TOTAL</b>		<b>43 - 5</b>	<b>1939:03</b>	<b>11</b>	<b>4</b>	<b>26</b>	<b>87</b>	<b>.126</b>	<b>46</b>	<b>.529</b>	<b>2</b>	<b>0 - 0</b>

PLAYER CAPSULES



**ANNA HADDOCK** **4**  
**MIDFIELDER**  
 Gr. | 5-5  
 Bowling Green, Ky. | Greenwood HS

**SEASON HIGH** **CAREER HIGH**  
 72, vs. Clemson (8/15)..... **MINS** .....110 (2x), last vs. Ole Miss (10/13/20)  
 ..... **G** .....2 (2x), last vs. Georgia (9/17/21)  
 1, vs. Clemson (8/15)..... **A** .....4, vs. Kennesaw State (2/19/21)  
 1, vs. Clemson (8/15)..... **PTS** .....4 (5x), last vs. Missouri (9/21/23)  
 ..... **SH** .....8, vs. LSU (2/26/21)  
 ..... **SOG** .....5, vs. BYU (8/21/21)

SEASON HIGHLIGHTS

GAME BY GAME

Date	Opponent	SCORE	GP	GS	G	A	PTS	SH	SH%	SOG	SOG%	GW	PK-ATT	YC	RC	MIN
08/15/2024	Clemson	4-0	*	*	0	1	1	0	.000	0	.000	0	0-0	0	0	72
<b>Totals</b>		<b>4-0</b>	<b>1</b>	<b>1</b>	<b>0</b>	<b>1</b>	<b>1</b>	<b>0</b>	<b>.000</b>	<b>0</b>	<b>.000</b>	<b>0</b>	<b>0-0</b>	<b>0</b>	<b>0</b>	<b>72</b>

HADDOCK'S CAREER STATS

SEASON	TEAM	GP-GS	Min.	G	A	Pts	Shot	Shot%	SOG	SOG%	GW	PK-Att
2020-21	AUB	18 - 18	1690:58	2	10	14	54	.037	24	.444	0	0 - 0
2021-22	AUB	20 - 20	1668:56	9	8	26	65	.138	27	.415	4	1 - 1
2022-23	AUB	18 - 18	1517:16	3	6	12	51	.059	25	.490	1	0 - 2
2023-24	AUB	20 - 20	1734:08	4	7	15	43	.093	18	.419	2	0 - 0
2024-25	AUB	1 - 1	71:54	0	1	1	0	.000	0	.000	0	0 - 0
<b>TOTAL</b>		<b>77 - 77</b>	<b>6683:13</b>	<b>18</b>	<b>32</b>	<b>68</b>	<b>213</b>	<b>.085</b>	<b>94</b>	<b>.441</b>	<b>7</b>	<b>1 - 3</b>

PLAYER CAPSULES



**JESSICA OSBORNE**

**5**

**DEFENDER**

**So. | 6-0**

**Summerville, S.C. | Pinewood Preparatory**

**SEASON HIGH**

**CAREER HIGH**

90, vs. Clemson (8/15)..... **MINS** ..... 90 (6x), last vs. Clemson (8/15/24)  
 ..... **G** ..... 1, vs. LSU (10/22/23)  
 ..... **A** .....  
 ..... **PTS** ..... 2, vs. LSU (10/22/23)  
 ..... **SH** ..... 1 (4x), last vs. Tennessee (10/29/23)  
 ..... **SOG** ..... 1, vs. LSU (10/22/23)

SEASON HIGHLIGHTS

GAME BY GAME

Date	Opponent	SCORE	GP	GS	G	A	PTS	SH	SH%	SOG	SOG%	GW	PK-ATT	YC	RC	MIN
08/15/2024	Clemson	4-0	*	*	0	0	0	0	.000	0	.000	0	0-0	0	0	90
<b>Totals</b>		<b>4-0</b>	<b>1</b>	<b>1</b>	<b>0</b>	<b>0</b>	<b>0</b>	<b>0</b>	<b>.000</b>	<b>0</b>	<b>.000</b>	<b>0</b>	<b>0-0</b>	<b>0</b>	<b>0</b>	<b>90</b>

OSBORNE'S CAREER STATS

SEASON	TEAM	GP-GS	Min.	G	A	Pts	Shot	Shot%	SOG	SOG%	GW	PK-Att
2023-24	AUB	13 - 10	833:40	1	0	2	4	.250	1	.250	0	0 - 0
2024-25	AUB	1 - 1	90:00	0	0	0	0	.000	0	.000	0	0 - 0
<b>TOTAL</b>		<b>14 - 11</b>	<b>923:40</b>	<b>1</b>	<b>0</b>	<b>2</b>	<b>4</b>	<b>.250</b>	<b>1</b>	<b>.250</b>	<b>0</b>	<b>0 - 0</b>

PLAYER CAPSULES



**BECKY CONTRERAS** **6**  
**MIDFIELDER**  
**R-Sr. | 5-6**  
**Dacula, Ga. | Dacula HS | Kennesaw State**

**SEASON HIGH** **CAREER HIGH**  
 31, vs. Clemson (8/15) ..... **MINS** ..... 110, vs. Lipscomb (11/9/19)  
 1, vs. Clemson (8/15)..... **G**..... 1 (10x), last vs. Clemson (8/15/24)  
 ..... **A**..... 1 (6x), last vs. American (9/3/23)  
 2, vs. Clemson (8/15)..... **PTS**..... 2 (10x), last vs. Clemson (8/15/24)  
 4, vs. Clemson (8/15)..... **SH** ..... 9, at FGCU (4/15/21)  
 2, vs. Clemson (8/15)..... **SOG** ..... 7, at FGCU (4/15/21)

SEASON HIGHLIGHTS

Scored the fourth and final goal in Auburn's 4-0 defeat of No. 5 Clemson, heading in service from a corner in the 66th minute.

GAME BY GAME

Date	Opponent	SCORE	GP	GS	G	A	PTS	SH	SH%	SOG	SOG%	GW	PK-ATT	YC	RC	MIN
08/15/2024	Clemson	4-0	*		1	0	2	4	.250	2	.500	0	0-0	0	0	31
<b>Totals</b>		<b>4-0</b>	<b>1</b>	<b>0</b>	<b>1</b>	<b>0</b>	<b>2</b>	<b>4</b>	<b>.250</b>	<b>2</b>	<b>.500</b>	<b>0</b>	<b>0-0</b>	<b>0</b>	<b>0</b>	<b>31</b>

CONTRERAS' CAREER STATS

SEASON	TEAM	GP-GS	Min.	G	A	Pts	Shot	Shot%	SOG	SOG%	GW	PK-Att
2019-20	KennSt	20 - 20	1522:43	6	2	14	69	.087	36	.522	4	0 - 0
2020-21	KennSt	12 - 10	871:55	2	2	6	37	.054	18	.486	2	0 - 0
2021-22	KennSt	10 - 6	592:25	0	1	1	10	.000	3	.300	0	0 - 0
2023-24	AUB	12 - 1	365:01	1	1	3	11	.091	5	.455	0	0 - 0
2024-25	AUB	1 - 0	30:50	1	0	2	4	.250	2	.500	0	0 - 0
<b>TOTAL FOR AUB</b>		<b>13 - 1</b>	<b>395:51</b>	<b>2</b>	<b>1</b>	<b>5</b>	<b>15</b>	<b>.133</b>	<b>7</b>	<b>.467</b>	<b>0</b>	<b>0 - 0</b>
<b>TOTAL</b>		<b>55 - 37</b>	<b>3382:54</b>	<b>10</b>	<b>6</b>	<b>26</b>	<b>131</b>	<b>.076</b>	<b>64</b>	<b>.489</b>	<b>6</b>	<b>0 - 0</b>

PLAYER CAPSULES



**CARLY THATCHER**

**7**

**FORWARD/MIDFIELDER**  
**Sr. | 5-2**  
**Greer S.C. | Riverside HS**

**SEASON HIGH**

**CAREER HIGH**

53, vs. Clemson (8/15) ..... **MINS** ..... 84, at Syracuse (8/24/23)  
 ..... **G** ..... 3, vs. Alabama A&M (9/9/21)  
 ..... **A** ..... 1 (5x), last vs. Army (8/27/23)  
 ..... **PTS** ..... 6, vs. Alabama A&M (9/9/21)  
 1, vs. Clemson (8/15) ..... **SH** ..... 5, vs. Alabama (10/27/22)  
 ..... **SOG** ..... 3 (3x), last vs. Mississippi State (10/9/22)

SEASON HIGHLIGHTS

GAME BY GAME

Date	Opponent	SCORE	GP	GS	G	A	PTS	SH	SH%	SOG	SOG%	GW	PK-ATT	YC	RC	MIN
08/15/2024	Clemson	4-0	*	*	0	0	0	1	.000	0	.000	0	0-0	0	0	53
<b>Totals</b>		<b>4-0</b>	<b>1</b>	<b>1</b>	<b>0</b>	<b>0</b>	<b>0</b>	<b>1</b>	<b>.000</b>	<b>0</b>	<b>.000</b>	<b>0</b>	<b>0-0</b>	<b>0</b>	<b>0</b>	<b>53</b>

THATCHER'S CAREER STATS

SEASON	TEAM	GP-GS	Min.	G	A	Pts	Shot	Shot%	SOG	SOG%	GW	PK-Att
2021-22	AUB	17 - 0	446:07	3	2	8	13	.231	7	.538	0	0 - 0
2022-23	AUB	17 - 7	925:46	2	2	6	28	.071	13	.464	1	0 - 0
2023-24	AUB	15 - 14	970:31	1	1	3	17	.059	6	.353	0	0 - 0
2024-25	AUB	1 - 1	52:46	0	0	0	1	.000	0	.000	0	0 - 0
<b>TOTAL</b>		<b>50 - 22</b>	<b>2395:11</b>	<b>6</b>	<b>5</b>	<b>17</b>	<b>59</b>	<b>.102</b>	<b>26</b>	<b>.441</b>	<b>1</b>	<b>0 - 0</b>

PLAYER CAPSULES



**MALLORY MOONEY**

**8**

**Defender**  
**5th | 5-2**  
**Broomfield, Colo. | Broomfield HS**

**SEASON HIGH**

**CAREER HIGH**

82, vs. Clemson (8/15) ..... **MINS** .....104, vs. LSU (2/26/21)  
 ..... **G** .....3, vs. Virginia Tech (4/17/21)  
 1, vs. Clemson (8/15)..... **A** .....2 (2x), last vs. UAB (9/2/21)  
 1, vs. Clemson (8/15)..... **PTS** .....6, vs. Virginia Tech (4/17/21)  
 ..... **SH** .....4, vs. Virginia Tech (4/17/21)  
 ..... **SOG** .....3, vs. Virginia Tech (4/17/21)

SEASON HIGHLIGHTS

GAME BY GAME

Date	Opponent	SCORE	GP	GS	G	A	PTS	SH	SH%	SOG	SOG%	GW	PK-ATT	YC	RC	MIN
08/15/2024	Clemson	4-0	*	*	0	1	1	0	.000	0	.000	0	0-0	0	0	82
<b>Totals</b>		<b>4-0</b>	<b>1</b>	<b>1</b>	<b>0</b>	<b>1</b>	<b>1</b>	<b>0</b>	<b>.000</b>	<b>0</b>	<b>.000</b>	<b>0</b>	<b>0-0</b>	<b>0</b>	<b>0</b>	<b>82</b>

MOONEY'S CAREER STATS

SEASON	TEAM	GP-GS	Min.	G	A	Pts	Shot	Shot%	SOG	SOG%	GW	PK-Att
2020-21	AUB	18 - 17	1232:50	5	4	14	17	.294	10	.588	2	0 - 0
2021-22	AUB	20 - 20	1675:01	0	4	4	8	.000	1	.125	0	0 - 0
2022-23	AUB	8 - 0	59:37	0	0	0	2	.000	1	.500	0	0 - 0
2023-24	AUB	20 - 20	1700:45	0	3	3	10	.000	5	.500	0	0 - 0
2024-25	AUB	1 - 1	81:11	0	1	1	0	.000	0	.000	0	0 - 0
<b>TOTAL</b>		<b>67 - 58</b>	<b>4749:24</b>	<b>5</b>	<b>12</b>	<b>22</b>	<b>37</b>	<b>.135</b>	<b>17</b>	<b>.459</b>	<b>2</b>	<b>0 - 0</b>

PLAYER CAPSULES



**JESSICA ASKEY**

**9**

**DEFENDER**

**Fr. | 5-2**

**Johns Creek, Ga. | Chattahoochee HS**

**SEASON HIGH**

**CAREER HIGH**

.....	MINS	.....
.....	G	.....
.....	A	.....
.....	PTS	.....
.....	SH	.....
.....	SOG	.....

SEASON HIGHLIGHTS

Empty box for season highlights.

GAME BY GAME

Large empty box for game-by-game statistics.

PLAYER CAPSULES



**SAMMIE BROWN**

**10**

**MIDFIELDER**

**5th | 5-3**

**Morgantown, W.V. | Morgantown HS**

**SEASON HIGH**

**CAREER HIGH**

70, vs. Clemson (8/15)..... **MINS** .....89, vs. Missouri (9/21/23)  
 ..... **G** .....1, at Army (8/27/23)  
 ..... **A** .....1, vs. Missouri (9/21/23)  
 ..... **PTS** .....2, at Army (8/27/23)  
 1, vs. Clemson (8/15)..... **SH** .....2 (2x), last at Army (8/27/23)  
 1, vs. Clemson (8/15)..... **SOG** .....1 (7x), last vs. Clemson (8/15/24)

SEASON HIGHLIGHTS

GAME BY GAME

Date	Opponent	SCORE	GP	GS	G	A	PTS	SH	SH%	SOG	SOG%	GW	PK-ATT	YC	RC	MIN
08/15/2024	Clemson	4-0	*	*	0	0	0	1	.000	1	1.000	0	0-0	0	0	70
<b>Totals</b>		<b>4-0</b>	<b>1</b>	<b>1</b>	<b>0</b>	<b>0</b>	<b>0</b>	<b>1</b>	<b>.000</b>	<b>1</b>	<b>1.000</b>	<b>0</b>	<b>0-0</b>	<b>0</b>	<b>0</b>	<b>70</b>

BROWN'S CAREER STATS

SEASON	TEAM	GP-GS	Min.	G	A	Pts	Shot	Shot%	SOG	SOG%	GW	PK-Att
2020-21	AUB	1 - 0	02:00	0	0	0	0	.000	0	.000	0	0 - 0
2022-23	AUB	15 - 0	255:51	0	0	0	3	.000	2	.667	0	0 - 0
2023-24	AUB	20 - 19	1375:58	1	1	3	7	.143	3	.429	0	0 - 0
2024-25	AUB	1 - 1	69:36	0	0	0	1	.000	1	1.000	0	0 - 0
<b>TOTAL</b>		<b>37 - 20</b>	<b>1703:25</b>	<b>1</b>	<b>1</b>	<b>3</b>	<b>11</b>	<b>.091</b>	<b>6</b>	<b>.545</b>	<b>0</b>	<b>0 - 0</b>



PLAYER CAPSULES



**LJ KNOX**

**11**

**DEFENDER**  
**Sr. | 5-10**  
**Brentwood, Tenn. | Brentwood Academy**

**SEASON HIGH**

**CAREER HIGH**

90, vs. Clemson (8/15)..... **MINS** .....90 (20x), last vs. Clemson (8/15/24)  
 ..... **G** .....1, at Syracuse (8/24/23)  
 ..... **A** .....1, vs. Troy (8/20/23)  
 ..... **PTS** .....2, at Syracuse (8/24/23)  
 ..... **SH** .....2 (3x), last vs. Arkansas (10/31/23)  
 ..... **SOG** .....2, at Syracuse (8/24)

SEASON HIGHLIGHTS

GAME BY GAME

Date	Opponent	SCORE	GP	GS	G	A	PTS	SH	SH%	SOG	SOG%	GW	PK-ATT	YC	RC	MIN
08/15/2024	Clemson	4-0	*	*	0	0	0	0	.000	0	.000	0	0-0	0	0	90
<b>Totals</b>		<b>4-0</b>	<b>1</b>	<b>1</b>	<b>0</b>	<b>0</b>	<b>0</b>	<b>0</b>	<b>.000</b>	<b>0</b>	<b>.000</b>	<b>0</b>	<b>0-0</b>	<b>0</b>	<b>0</b>	<b>90</b>

KNOX'S CAREER STATS

SEASON	TEAM	GP-GS	Min.	G	A	Pts	Shot	Shot%	SOG	SOG%	GW	PK-Att
2021-22	AUB	7 - 0	129:33	0	0	0	1	.000	0	.000	0	0 - 0
2022-23	AUB	14 - 0	192:02	0	0	0	0	.000	0	.000	0	0 - 0
2023-24	AUB	20 - 20	1786:31	1	1	3	6	.167	3	.500	1	0 - 0
2024-25	AUB	1 - 1	90:00	0	0	0	0	.000	0	.000	0	0 - 0
<b>TOTAL</b>		<b>42 - 21</b>	<b>2198:06</b>	<b>1</b>	<b>1</b>	<b>3</b>	<b>7</b>	<b>.143</b>	<b>3</b>	<b>.429</b>	<b>1</b>	<b>0 - 0</b>

PLAYER CAPSULES



**HALEY DUCA**

**12**

**DEFENDER**  
 Sr. | 5-2  
 Chelsea, Ala. | Chelsea HS

**SEASON HIGH**

**CAREER HIGH**

19, vs. Clemson (8/15) ..... **MINS** ..... 31, vs. Arkansas (10/31/23)  
 ..... **G** ..... 1, vs. Tennessee (10/29/23)  
 ..... **A** .....  
 ..... **PTS** ..... 2, vs. Tennessee (10/29/23)  
 ..... **SH** ..... 1 (3x), last vs. Tennessee (10/29/23)  
 ..... **SOG** ..... 1 (3x), last vs. Tennessee (10/29/23)

SEASON HIGHLIGHTS

GAME BY GAME

Date	Opponent	SCORE	GP	GS	G	A	PTS	SH	SH%	SOG	SOG%	GW	PK-ATT	YC	RC	MIN
08/15/2024	Clemson	4-0	*		0	0	0	0	.000	0	.000	0	0-0	0	0	19
<b>Totals</b>		<b>4-0</b>	<b>1</b>	<b>0</b>	<b>0</b>	<b>0</b>	<b>0</b>	<b>0</b>	<b>.000</b>	<b>0</b>	<b>.000</b>	<b>0</b>	<b>0-0</b>	<b>0</b>	<b>0</b>	<b>19</b>

DUCA'S CAREER STATS

SEASON	TEAM	GP-GS	Min.	G	A	Pts	Shot	Shot%	SOG	SOG%	GW	PK-Att
2022-23	AUB	2 - 0	29:45	0	0	0	1	.000	1	1.000	0	0 - 0
2023-24	AUB	14 - 0	229:41	1	0	2	2	.500	2	1.000	1	0 - 0
2024-25	AUB	1 - 0	18:06	0	0	0	0	.000	0	.000	0	0 - 0
<b>TOTAL</b>		<b>17 - 0</b>	<b>277:32</b>	<b>1</b>	<b>0</b>	<b>2</b>	<b>3</b>	<b>.333</b>	<b>3</b>	<b>1.000</b>	<b>1</b>	<b>0 - 0</b>

PLAYER CAPSULES



**TAYLOR RICHARDS**

**13**

**GOALKEEPER**  
R-So. | 5-8  
Plano, Texas | Plano Senior HS

**SEASON HIGH**

**CAREER HIGH**

MINS

GA

SV

SF

SEASON HIGHLIGHTS

Empty box for season highlights.

PLAYER CAPSULES



**RORY SCHANK**

**14**

**MIDFIELDER**

**Fr. | 5-8**

**Flower Mound, Texas | Flower Mound HS**

**SEASON HIGH**

**CAREER HIGH**

.....	MINS	.....
.....	G	.....
.....	A	.....
.....	PTS	.....
.....	SH	.....
.....	SOG	.....

**SEASON HIGHLIGHTS**

Empty box for season highlights.

PLAYER CAPSULES



**SYDNIÉ THIBODAUX**

**15**

**MIDFIELDER**

**Sr. | 5-5**

**Montgomery, Texas | Lake Creek HS**

**SEASON HIGH**

**CAREER HIGH**

22, vs. Clemson (8/15) ..... **MINS** .....71, vs. Texas A&M (10/13/23)  
 ..... **G** ..... 1 (5x), last vs. Arkansas (10/8/23)  
 ..... **A** ..... 1 (2x), last vs. LSU (10/22/23)  
 ..... **PTS** ..... 2 (5x), last vs. Arkansas (10/8/23)  
 1, vs. Clemson (8/15) ..... **SH** ..... 4, vs. Southern Miss (8/21/22)  
 1, vs. Clemson (8/15) ..... **SOG** ..... 1 (11x), last vs. Texas A&M (10/13/23)

SEASON HIGHLIGHTS

GAME BY GAME

Date	Opponent	SCORE	GP	GS	G	A	PTS	SH	SH%	SOG	SOG%	GW	PK-ATT	YC	RC	MIN
08/15/2024	Clemson	4-0	*		0	0	0	1	.000	1	1.000	0	0-0	0	0	22
<b>Totals</b>		<b>4-0</b>	<b>1</b>	<b>0</b>	<b>0</b>	<b>0</b>	<b>0</b>	<b>1</b>	<b>.000</b>	<b>1</b>	<b>1.000</b>	<b>0</b>	<b>0-0</b>	<b>0</b>	<b>0</b>	<b>22</b>

THIBODAUX'S CAREER STATS

SEASON	TEAM	GP-GS	Min.	G	A	Pts	Shot	Shot%	SOG	SOG%	GW	PK-Att
2021-22	AUB	15 - 0	267:48	1	0	2	8	.125	1	.125	0	0 - 0
2022-23	AUB	15 - 2	337:14	2	1	5	15	.133	5	.333	0	0 - 0
2023-24	AUB	14 - 4	510:20	2	1	5	7	.286	5	.714	1	0 - 0
2024-25	AUB	1 - 0	21:03	0	0	0	1	.000	1	1.000	0	0 - 0
<b>TOTAL</b>		<b>45 - 6</b>	<b>1136:25</b>	<b>5</b>	<b>2</b>	<b>12</b>	<b>31</b>	<b>.161</b>	<b>12</b>	<b>.387</b>	<b>1</b>	<b>0 - 0</b>

PLAYER CAPSULES



**DYLAN DRIVER**

**16**

**FORWARD**  
**R-So. | 5-11**  
**Macon, Ga. | Stratford Academy**

**SEASON HIGH**

**CAREER HIGH**

35, vs. Clemson (8/15) ..... **MINS** ..... 53, at Ole Miss (9/24/23)  
 1, vs. Clemson (8/15) ..... **G** ..... 1 (3x), last vs. Clemson (8/15/24)  
 ..... **A** .....  
 2, vs. Clemson (8/15) ..... **PTS** ..... 2 (3x), last vs. Clemson (8/15/24)  
 1, vs. Clemson (8/15) ..... **SH** ..... 2, vs. American (9/3/23)  
 1, vs. Clemson (8/15) ..... **SOG** ..... 2, vs. American (9/3/23)

SEASON HIGHLIGHTS

--

GAME BY GAME

Date	Opponent	SCORE	GP	GS	G	A	PTS	SH	SH%	SOG	SOG%	GW	PK-ATT	YC	RC	MIN
08/15/2024	Clemson	4-0	*		1	0	2	1	1.000	1	1.000	0	0-0	0	0	35
<b>Totals</b>		<b>4-0</b>	<b>1</b>	<b>0</b>	<b>1</b>	<b>0</b>	<b>2</b>	<b>1</b>	<b>1.000</b>	<b>1</b>	<b>1.000</b>	<b>0</b>	<b>0-0</b>	<b>0</b>	<b>0</b>	<b>35</b>

DRIVER'S CAREER STATS

SEASON	TEAM	GP-GS	Min.	G	A	Pts	Shot	Shot%	SOG	SOG%	GW	PK-Att
2023-24	AUB	19 - 0	337:16	2	0	4	3	.667	3	1.000	0	0 - 0
2024-25	AUB	1 - 0	34:57	1	0	2	1	1.000	1	1.000	0	0 - 0
<b>TOTAL</b>		<b>20 - 0</b>	<b>372:12</b>	<b>3</b>	<b>0</b>	<b>6</b>	<b>4</b>	<b>.750</b>	<b>4</b>	<b>1.000</b>	<b>0</b>	<b>0 - 0</b>

PLAYER CAPSULES



**MADDY BONDON** **17**  
**MIDFIELDER/DEFENDER**  
**Gr. | 5-4**  
**Duluth, Ga. | Peachtree Ridge HS**

**SEASON HIGH** ..... **CAREER HIGH**  
 ..... **MINS** ..... 31, vs. American (9/3/23)  
 ..... **G** ..... 1, vs. Troy (8/20/23)  
 ..... **A** .....  
 ..... **PTS** ..... 2, vs. Troy (8/20/23)  
 ..... **SH** ..... 1 (2x), last vs. American (9/3/23)  
 ..... **SOG** ..... 1 (2x), last vs. American (9/3/23)

SEASON HIGHLIGHTS

GAME BY GAME

Date	Opponent	SCORE	GP	GS	G	A	PTS	SH	SH%	SOG	SOG%	GW	PK-ATT	YC	RC	MIN
08/17/2023	Samford	0-0	*		0	0	0	0	.000	0	.000	0	0-0	0	0	2
08/20/2023	Troy	5-0	*		1	0	2	1	1.000	1	1.000	0	0-0	0	0	26
08/24/2023	at Syracuse	2-1	*		0	0	0	0	1.000	0	1.000	0	0-0	0	0	3
08/27/2023	at Army West Point	3-2	*		0	0	0	0	1.000	0	1.000	0	0-0	0	0	17
08/31/2023	Wake Forest	0-2	*		0	0	0	0	1.000	0	1.000	0	0-0	0	0	5
09/03/2023	American	3-0	*		0	0	0	1	.500	1	1.000	0	0-0	0	0	32
09/10/2023	at Ohio St.	0-2	*		0	0	0	0	.500	0	1.000	0	0-0	0	0	17
09/15/2023	at Mississippi St.	0-1	*		0	0	0	0	.500	0	1.000	0	0-0	0	0	12
09/21/2023	Missouri	3-2	*		0	0	0	0	.500	0	1.000	0	0-0	0	0	2
09/24/2023	at Ole Miss	0-0	*		0	0	0	0	.500	0	1.000	0	0-0	0	0	16
10/08/2023	Arkansas	2-1	*		0	0	0	0	.500	0	1.000	0	0-0	0	0	2
10/22/2023	LSU	3-0	*		0	0	0	0	.500	0	1.000	0	0-0	0	0	5
<b>Totals</b>		<b>21-11</b>	<b>12</b>	<b>0</b>	<b>1</b>	<b>0</b>	<b>2</b>	<b>2</b>	<b>.500</b>	<b>2</b>	<b>1.000</b>	<b>0</b>	<b>0-0</b>	<b>0</b>	<b>0</b>	<b>134</b>

BONDON'S CAREER STATS

SEASON	TEAM	GP-GS	Min.	G	A	Pts	Shot	Shot%	SOG	SOG%	GW	PK-Att
2020-21	AUB	3 - 0	37:40	0	0	0	0	.000	0	.000	0	0 - 0
2021-22	AUB	1 - 0	25:43	0	0	0	0	.000	0	.000	0	0 - 0
2023-24	AUB	12 - 0	133:51	1	0	2	2	.500	2	1.000	0	0 - 0
<b>TOTAL</b>		<b>16 - 0</b>	<b>197:13</b>	<b>1</b>	<b>0</b>	<b>2</b>	<b>2</b>	<b>.500</b>	<b>2</b>	<b>1.000</b>	<b>0</b>	<b>0 - 0</b>

PLAYER CAPSULES



**JAYCIE SILHAN**

**18**

**FORWARD**  
 Sr. | 5-11  
 Spring, Texas | Klein Oak HS

**SEASON HIGH**

**CAREER HIGH**

MINS ..... 27, vs. Alabama A&M (9/9/21)  
 G.....  
 A.....  
 PTS.....  
 SH .....1 (2x),last vs. Southern Miss (8/21/22)  
 SOG.....

SEASON HIGHLIGHTS

GAME BY GAME

Date	Opponent	SCORE	GP	GS	G	A	PTS	SH	SH%	SOG	SOG%	GW	PK-ATT	YC	RC	MIN
08/20/2023	Troy	5-0	*		0	0	0	0	.000	0	.000	0	0-0	0	0	13
09/03/2023	American	3-0	*		0	0	0	0	.000	0	.000	0	0-0	0	0	14
09/21/2023	Missouri	3-2	*		0	0	0	0	.000	0	.000	0	0-0	0	0	3
10/08/2023	Arkansas	2-1	*		0	0	0	0	.000	0	.000	0	0-0	0	0	4
10/31/2023	vs Arkansas	0-4	*		0	0	0	0	.000	0	.000	0	0-0	0	0	3
<b>Totals</b>		<b>13-7</b>	<b>5</b>	<b>0</b>	<b>0</b>	<b>0</b>	<b>0</b>	<b>0</b>	<b>.000</b>	<b>0</b>	<b>.000</b>	<b>0</b>	<b>0-0</b>	<b>0</b>	<b>0</b>	<b>35</b>

SILHAN'S CAREER STATS

SEASON	TEAM	GP-GS	Min.	G	A	Pts	Shot	Shot%	SOG	SOG%	GW	PK-Att
2021-22	AUB	9 - 0	106:07	0	0	0	1	.000	0	.000	0	0 - 0
2022-23	AUB	1 - 0	17:20	0	0	0	1	.000	0	.000	0	0 - 0
2023-24	AUB	5 - 0	34:39	0	0	0	0	.000	0	.000	0	0 - 0
<b>TOTAL</b>		<b>15 - 0</b>	<b>158:06</b>	<b>0</b>	<b>0</b>	<b>0</b>	<b>2</b>	<b>.000</b>	<b>0</b>	<b>.000</b>	<b>0</b>	<b>0 - 0</b>



PLAYER CAPSULES



**MADDIE STODDARD** **19**  
**FORWARD**  
 Fr. | 5-1  
 Cumming, Ga. | Denmark HS

<b>SEASON HIGH</b>	<b>CAREER HIGH</b>
15, vs. Clemson (8/15).....	MINS ..... 15, vs. Clemson (8/15/24)
	G.....
	A.....
	PTS.....
	SH.....
	SOG.....

SEASON HIGHLIGHTS

--

GAME BY GAME

Date	Opponent	SCORE	GP	GS	G	A	PTS	SH	SH%	SOG	SOG%	GW	PK-ATT	YC	RC	MIN
08/15/2024	Clemson	4-0	*		0	0	0	0	.000	0	.000	0	0-0	0	0	15
<b>Totals</b>		<b>4-0</b>	<b>1</b>	<b>0</b>	<b>0</b>	<b>0</b>	<b>0</b>	<b>0</b>	<b>.000</b>	<b>0</b>	<b>.000</b>	<b>0</b>	<b>0-0</b>	<b>0</b>	<b>0</b>	<b>15</b>

STODDARD'S CAREER STATS

SEASON	TEAM	GP-GS	Min.	G	A	Pts	Shot	Shot%	SOG	SOG%	GW	PK-Att
2024-25	AUB	1 - 0	14:59	0	0	0	0	.000	0	.000	0	0 - 0
<b>TOTAL</b>		<b>1 - 0</b>	<b>14:59</b>	<b>0</b>	<b>0</b>	<b>0</b>	<b>0</b>	<b>.000</b>	<b>0</b>	<b>.000</b>	<b>0</b>	<b>0 - 0</b>

PLAYER CAPSULES



**HAYDEN COLSON** **20**

**MIDFIELDER/DEFENDER**  
**Jr. | 5-8**  
**Denton, Texas | John H. Guyer HS**

**SEASON HIGH**

**CAREER HIGH**

80, vs. Clemson (8/15)..... **MINS** .....90 (12x), last vs. Arkansas (10/31/23)  
 ..... **G** .....1, vs. Southern Miss (8/21/22)  
 ..... **A** .....2, vs. Troy (8/20/23)  
 ..... **PTS** .....2 (2x), last vs. Troy (8/20/23)  
 ..... **SH** .....1 (7x), last at Kentucky (10/6/22)  
 ..... **SOG** .....1 (5x), last at Kentucky (10/6/22)

SEASON HIGHLIGHTS

GAME BY GAME

Date	Opponent	SCORE	GP	GS	G	A	PTS	SH	SH%	SOG	SOG%	GW	PK-ATT	YC	RC	MIN
08/15/2024	Clemson	4-0	*	*	0	0	0	0	.000	0	.000	0	0-0	0	0	80
<b>Totals</b>		<b>4-0</b>	<b>1</b>	<b>1</b>	<b>0</b>	<b>0</b>	<b>0</b>	<b>0</b>	<b>.000</b>	<b>0</b>	<b>.000</b>	<b>0</b>	<b>0-0</b>	<b>0</b>	<b>0</b>	<b>80</b>

COLSON'S CAREER STATS

SEASON	TEAM	GP-GS	Min.	G	A	Pts	Shot	Shot%	SOG	SOG%	GW	PK-Att
2022-23	AUB	18 - 18	1342:59	1	0	2	7	.143	5	.714	0	0 - 0
2023-24	AUB	20 - 19	1626:38	0	2	2	0	.000	0	.000	0	0 - 0
2024-25	AUB	1 - 1	79:11	0	0	0	0	.000	0	.000	0	0 - 0
<b>TOTAL</b>		<b>39 - 38</b>	<b>3048:48</b>	<b>1</b>	<b>2</b>	<b>4</b>	<b>7</b>	<b>.143</b>	<b>5</b>	<b>.714</b>	<b>0</b>	<b>0 - 0</b>

PLAYER CAPSULES



**CIARA BROWN**

**21**

**FORWARD**

Fr. | 5-7

Wyandanch, N.Y. | Half Hollow Hills West HS

**SEASON HIGH**

**CAREER HIGH**

.....	MINS	.....
.....	G	.....
.....	A	.....
.....	PTS	.....
.....	SH	.....
.....	SOG	.....

**SEASON HIGHLIGHTS**

Empty box for season highlights.

PLAYER CAPSULES



**OLIVIA WOODSON** **22**

**FORWARD**  
**So. | 5-4**  
**Richmond, Va. | Monacan HS**

**SEASON HIGH**

**CAREER HIGH**

49, vs. Clemson (8/15)..... **MINS**..... 54, vs. Samford (8/17/23)  
 1, vs. Clemson (8/15)..... **G**..... 2, vs. American (9/3/23)  
 ..... **A**.....  
 2, vs. Clemson (8/15)..... **PTS**..... 4, vs. American (9/3/23)  
 4, vs. Clemson (8/15)..... **SH**..... 4, vs. Clemson (8/15/24)  
 3, vs. Clemson (8/15)..... **SOG**..... 3, vs. Clemson (8/15/24)

SEASON HIGHLIGHTS

Put the game away in the 53rd minute of Auburn's 4-0 upset of No. 5 Clemson, slotting a ball home to for Auburn's third goal of the match.

GAME BY GAME

Date	Opponent	SCORE	GP	GS	G	A	PTS	SH	SH%	SOG	SOG%	GW	PK-ATT	YC	RC	MIN
08/15/2024	Clemson	4-0	*	*	1	0	2	4	.250	3	.750	0	0-0	0	0	49
<b>Totals</b>		<b>4-0</b>	<b>1</b>	<b>1</b>	<b>1</b>	<b>0</b>	<b>2</b>	<b>4</b>	<b>.250</b>	<b>3</b>	<b>.750</b>	<b>0</b>	<b>0-0</b>	<b>0</b>	<b>0</b>	<b>49</b>

WOODSON'S CAREER STATS

SEASON	TEAM	GP-GS	Min.	G	A	Pts	Shot	Shot%	SOG	SOG%	GW	PK-Att
2023-24	AUB	19 - 5	591:44	2	0	4	21	.095	10	.476	1	0 - 0
2024-25	AUB	1 - 1	48:47	1	0	2	4	.250	3	.750	0	0 - 0
<b>TOTAL</b>		<b>20 - 6</b>	<b>640:31</b>	<b>3</b>	<b>0</b>	<b>6</b>	<b>25</b>	<b>.120</b>	<b>13</b>	<b>.520</b>	<b>1</b>	<b>0 - 0</b>

PLAYER CAPSULES



**OLIVIA CANDELINO** **23**  
**FORWARD/MIDFIELDER**  
**Gr. | 5-6**  
**Jacksonville, Fla. | The Bolles School**

**SEASON HIGH** ..... **CAREER HIGH**  
 29, vs. Clemson (8/15) ..... **MINS** ..... 89, vs. Samford (11/12/22)  
 ..... **G** ..... 2, vs. Chattanooga (9/5/21)  
 ..... **A** ..... 1 (13x), last vs. Troy (8/20/23)  
 ..... **PTS** ..... 4, vs. Chattanooga (9/5/21)  
 ..... **SH** ..... 5 (2x), last at Army (8/27/23)  
 ..... **SOG** ..... 4, at Army (8/27/23)

SEASON HIGHLIGHTS

GAME BY GAME

Date	Opponent	SCORE	GP	GS	G	A	PTS	SH	SH%	SOG	SOG%	GW	PK-ATT	YC	RC	MIN
08/15/2024	Clemson	4-0	*		0	0	0	0	.000	0	.000	0	0-0	0	0	29
<b>Totals</b>		<b>4-0</b>	<b>1</b>	<b>0</b>	<b>0</b>	<b>0</b>	<b>0</b>	<b>0</b>	<b>.000</b>	<b>0</b>	<b>.000</b>	<b>0</b>	<b>0-0</b>	<b>0</b>	<b>0</b>	<b>29</b>

CANDELINO'S CAREER STATS

SEASON	TEAM	GP-GS	Min.	G	A	Pts	Shot	Shot%	SOG	SOG%	GW	PK-Att
2020-21	AUB	17 - 8	707:41	3	1	7	14	.214	6	.429	2	0 - 0
2021-22	AUB	20 - 20	1320:10	2	8	12	31	.065	13	.419	0	0 - 0
2022-23	AUB	16 - 13	869:60	1	3	5	20	.050	5	.250	0	0 - 0
2023-24	AUB	20 - 15	1144:37	0	1	1	19	.000	6	.316	0	0 - 0
2024-25	AUB	1 - 0	28:30	0	0	0	0	.000	0	.000	0	0 - 0
<b>TOTAL</b>		<b>74 - 56</b>	<b>4070:57</b>	<b>6</b>	<b>13</b>	<b>25</b>	<b>84</b>	<b>.071</b>	<b>30</b>	<b>.357</b>	<b>2</b>	<b>0 - 0</b>

PLAYER CAPSULES



**LILY BORDERS**

**24**

**MIDFIELDER/FORWARD**  
Fr. | 5-7  
Lake Wales, Fla. | Lake Wales HS

**SEASON HIGH**

**CAREER HIGH**

9, vs. Clemson (8/15)..... MINS .....9, vs. Clemson (8/15/24)  
..... G.....  
..... A.....  
..... PTS.....  
..... SH.....  
..... SOG.....

SEASON HIGHLIGHTS

GAME BY GAME

Date	Opponent	SCORE	GP	GS	G	A	PTS	SH	SH%	SOG	SOG%	GW	PK-ATT	YC	RC	MIN
08/15/2024	Clemson	4-0	*		0	0	0	0	.000	0	.000	0	0-0	0	0	9
<b>Totals</b>		<b>4-0</b>	<b>1</b>	<b>0</b>	<b>0</b>	<b>0</b>	<b>0</b>	<b>0</b>	<b>.000</b>	<b>0</b>	<b>.000</b>	<b>0</b>	<b>0-0</b>	<b>0</b>	<b>0</b>	<b>9</b>

BORDER'S CAREER STATS

SEASON	TEAM	GP-GS	Min.	G	A	Pts	Shot	Shot%	SOG	SOG%	GW	PK-Att
2024-25	AUB	1 - 0	08:49	0	0	0	0	.000	0	.000	0	0 - 0
<b>TOTAL</b>		<b>1 - 0</b>	<b>08:49</b>	<b>0</b>	<b>0</b>	<b>0</b>	<b>0</b>	<b>.000</b>	<b>0</b>	<b>.000</b>	<b>0</b>	<b>0 - 0</b>

PLAYER CAPSULES



GRACIE BROWN 25

MIDFIELDER  
Fr. | 5-4  
Morgantown, W. Va. | Morgantown HS

SEASON HIGH	CAREER HIGH
..... MINS .....	.....
..... G .....	.....
..... A .....	.....
..... PTS .....	.....
..... SH .....	.....
..... SOG .....	.....

SEASON HIGHLIGHTS

Empty box for season highlights

PLAYER CAPSULES



**AVA CALDWELL**

**27**

**MIDFIELDER**

**Fr. | 5-4**

**Watkinsville, Ga. | North Oconee HS**

**SEASON HIGH**

**CAREER HIGH**

.....	MINS	.....
.....	G	.....
.....	A	.....
.....	PTS	.....
.....	SH	.....
.....	SOG	.....

**SEASON HIGHLIGHTS**

Empty box for season highlights.



PLAYER CAPSULES



**ERIN HOUSTON**

**28**

**DEFENDER**  
**Jr. | 5-9**  
**Kennesaw, Ga. | Harrison HS**

**SEASON HIGH**

**CAREER HIGH**

72, vs. Clemson (8/15)..... **MINS** ..... 84, at Alabama (10/5/23)  
 ..... **G** .....  
 ..... **A** ..... 2, vs. Southern Miss (8/21/22)  
 ..... **PTS** ..... 2, vs. Southern Miss (8/21/22)  
 ..... **SH** ..... 1 (2x), last vs. Arkansas (10/8/23)  
 ..... **SOG** ..... 1 (2x), last vs. Arkansas (10/8/23)

**SEASON HIGHLIGHTS**

Responsible for creating the 3rd-minute own goal in Auburn's 4-0 upset over No. 5 Clemson.

**GAME BY GAME**

Date	Opponent	SCORE	GP	GS	G	A	PTS	SH	SH%	SOG	SOG%	GW	PK-ATT	YC	RC	MIN
08/15/2024	Clemson	4-0	*	*	0	0	0	0	.000	0	.000	0	0-0	0	0	72
<b>Totals</b>		<b>4-0</b>	<b>1</b>	<b>1</b>	<b>0</b>	<b>0</b>	<b>0</b>	<b>0</b>	<b>.000</b>	<b>0</b>	<b>.000</b>	<b>0</b>	<b>0-0</b>	<b>0</b>	<b>0</b>	<b>72</b>

**HOUSTON'S CAREER STATS**

SEASON	TEAM	GP-GS	Min.	G	A	Pts	Shot	Shot%	SOG	SOG%	GW	PK-Att
2022-23	AUB	14 - 0	291:53	0	2	2	0	.000	0	.000	0	0 - 0
2023-24	AUB	20 - 8	897:42	0	0	0	2	.000	2	1.000	0	0 - 0
2024-25	AUB	1 - 1	71:54	0	0	0	0	.000	0	.000	0	0 - 0
<b>TOTAL</b>		<b>35 - 9</b>	<b>1261:28</b>	<b>0</b>	<b>2</b>	<b>2</b>	<b>2</b>	<b>.000</b>	<b>2</b>	<b>1.000</b>	<b>0</b>	<b>0 - 0</b>

PLAYER CAPSULES



**JORDYN CROSBY**

**31**

**FORWARD**

**So. | 5-6**

**Alpharetta, Ga. | Denmark HS**

**SEASON HIGH**

**CAREER HIGH**

30, vs. Clemson (8/15)..... **MINS** .....60, vs. Arizona State (11/11/23)  
 ..... **G** .....1 (5x), last at Portland (11/4/23)  
 ..... **A** .....  
 ..... **PTS** .....2 (5x), last at Portland (11/4/23)  
 ..... **SH** .....4, vs. Pacific (9/24/23)  
 ..... **SOG** .....2 (2x), last vs. Pacific (9/24/23)

2024 SEASON HIGHLIGHTS

GAME BY GAME

Date	Opponent	SCORE	GP	GS	G	A	PTS	SH	SH%	SOG	SOG%	GW	PK-ATT	YC	RC	MIN
08/15/2024	Clemson	4-0	*		0	0	0	0	.000	0	.000	0	0-0	0	0	30
<b>Totals</b>		<b>4-0</b>	<b>1</b>	<b>0</b>	<b>0</b>	<b>0</b>	<b>0</b>	<b>0</b>	<b>.000</b>	<b>0</b>	<b>.000</b>	<b>0</b>	<b>0-0</b>	<b>0</b>	<b>0</b>	<b>30</b>

CROSBY'S CAREER STATS

SEASON	TEAM	GP-GS	Min.	G	A	Pts	Shot	Shot%	SOG	SOG%	GW	PK-Att
2023-24	SCU	21 - 1	664:25	5	0	10	26	.192	11	.423	3	0 - 0
2024-25	AUB	1 - 0	29:28	0	0	0	0	.000	0	.000	0	0 - 0
<b>TOTAL FOR AUB</b>		<b>1 - 0</b>	<b>29:28</b>	<b>0</b>	<b>0</b>	<b>0</b>	<b>0</b>	<b>.000</b>	<b>0</b>	<b>.000</b>	<b>0</b>	<b>0 - 0</b>
<b>TOTAL</b>		<b>22 - 1</b>	<b>693:53</b>	<b>5</b>	<b>0</b>	<b>10</b>	<b>26</b>	<b>.192</b>	<b>11</b>	<b>.423</b>	<b>3</b>	<b>0 - 0</b>

PLAYER CAPSULES



**MYA WILLIAMS**

**77**

**FORWARD**

**R-Fr. | 5-5**

**Carrollton, Texas | Hebron HS**

**SEASON HIGH**

**CAREER HIGH**

.....	MINS	.....
.....	G	.....
.....	A	.....
.....	PTS	.....
.....	SH	.....
.....	SOG	.....

2024 SEASON HIGHLIGHTS

PLAYER CAPSULES



**JENNA SAPONG**

**78**

**GOALKEEPER**

**R-Fr. | 5-8**

**Johns Creek, Ga. | Northview HS**

**SEASON HIGH**

**CAREER HIGH**

MINS

GA

SV

SF

2024 SEASON HIGHLIGHTS

Empty box for 2024 Season Highlights.



2024-25 Auburn Women's Soccer  
Overall Team Statistics  
All games

Page 1/1  
as of Aug 17, 2024

### Game Records

Overall	Conference	Home	Away	Neutral
1 - 0 - 0	0 - 0 - 0	1 - 0 - 0	0 - 0 - 0	0 - 0 - 0

### Team statistics

	AUB	OPP
<b>SHOT STATISTICS</b>		
Goals-Shot attempts	4-13	0-10
Goals scored per game	4	0
Shot pct.	.308	.000
Shots on goal-Attempts	8-13	4-10
SOG pct.	.615	.400
Shots/Game	13	10
Assists	2	0
<b>GOAL BREAKDOWN</b>		
Total Goals	4	0
Penalty	0	0
Unassisted	-	-
Overtime	0	0
Goals scored average	4	0
<b>CORNER KICKS</b>		
	4	5
<b>PENALTY KICKS</b>		
	0-0	0-0
<b>OFFSIDES</b>		
	3	2
<b>PENALTIES</b>		
Fouls	12	3
Yellow cards	0	2
Red cards	0	0
<b>ATTENDANCE</b>		
Total	1212	0
Dates/Avg Per Date	1/1212	0/0
Neutral Site #/Avg	0/0	-

### Goals by Periods

Team	1st	2nd	OT1	OT2	TOTAL
AUB	2	2	0	0	4
Opponents	0	0	0	0	0

### Corners by Periods

Team	1st	2nd	OT1	OT2	TOTAL
AUB	1	3	0	0	4
Opponents	4	1	0	0	5

### Shots by Periods

Team	1st	2nd	OT1	OT2	TOTAL
AUB	9	4	0	0	13
Opponents	5	5	0	0	10

### Fouls by Periods

Team	1st	2nd	OT1	OT2	TOTAL
AUB	5	7	0	0	12
Opponents	2	1	0	0	3

### Saves by Periods

Team	1st	2nd	OT1	OT2	TOTAL
AUB	2	2	0	0	4
Opponents	5	0	0	0	5

### Offsides by Periods

Team	1st	2nd	OT1	OT2	TOTAL
AUB	3	0	0	0	3
Opponents	1	1	0	0	2



2024-25 Auburn Women's Soccer  
Category Leaders  
All games

Page 1/1  
as of Aug 17, 2024

##	Points	GP	G	A	Pts	Shots
6	Contreras, Becky	1	1	0	2	4
16	Driver, Dylan	1	1	0	2	1
22	Woodson, Olivia	1	1	0	2	4

##	Shots	GP	G	A	Shots	Shot%
6	Contreras, Becky	1	1	0	4	.250
22	Woodson, Olivia	1	1	0	4	.250
10	Brown, Sammie	1	0	0	1	.000
7	Thatcher, Carly	1	0	0	1	.000
15	Thibodaux, Sydnie	1	0	0	1	.000
3	Sallee, Shelby	1	0	0	1	.000
16	Driver, Dylan	1	1	0	1	1.000

##	Goals	GP	G	A	Pts	Shots
6	Contreras, Becky	1	1	0	2	4
16	Driver, Dylan	1	1	0	2	1
22	Woodson, Olivia	1	1	0	2	4

##	Shots On Goal	GP	G	A	Shots	Sog	Sog%
22	Woodson, Olivia	1	1	0	4	3	.750
6	Contreras, Becky	1	1	0	4	2	.500
10	Brown, Sammie	1	0	0	1	1	1.000
15	Thibodaux, Sydnie	1	0	0	1	1	1.000
16	Driver, Dylan	1	1	0	1	1	1.000

##	Assists	GP	G	A	Pts	Shots
4	Haddock, Anna	1	0	1	1	0
8	Mooney, Mallory	1	0	1	1	0

TV/RADIO SPOT CHART



**0**  
Madeline  
**MOORE**  
D » 5th



**00**  
Maddie  
**PROHASKA**  
GK » Gr.



**1**  
Ayana  
**YAPO**  
GK » Fr.



**3**  
Shelby  
**SALLEE**  
F » R-Jr.



**4**  
Anna  
**HADDOCK**  
MF » Gr.



**5**  
Jessica  
**OSBORNE**  
D » So.



**6**  
Becky  
**CONTRERAS**  
MF/F » R-Sr.



**7**  
Carly  
**THATCHER**  
F/MF » Sr.



**8**  
Mallory  
**MOONEY**  
D » 5th



**9**  
Jessica  
**ASKEY**  
D » Fr.



**10**  
Sammie  
**BROWN**  
MF » 5th



**11**  
LJ  
**KNOX**  
D » Sr.



**12**  
Haley  
**DUCA**  
D » Sr.



**13**  
Taylor  
**RICHARDS**  
GK » R-So.



**14**  
Rory  
**SCHANK**  
MF » Fr.



**15**  
Sydnie  
**THIBODAUX**  
MF » Sr.



**16**  
Dylan  
**DRIVER**  
F » R-So.



**17**  
Maddy  
**BONDON**  
MF/D » Gr.



**18**  
Jaycie  
**SILHAN**  
F » Sr.



**19**  
Maddie  
**STODDARD**  
F » Fr.



**20**  
Hayden  
**COLSON**  
MF/D » Jr.



**21**  
Ciara  
**BROWN**  
F » Fr.



**22**  
Olivia  
**WOODSON**  
F » So.



**23**  
Olivia  
**CANDELINO**  
F/MF » Gr.



**24**  
Lily  
**BORDERS**  
F/MF » Fr.



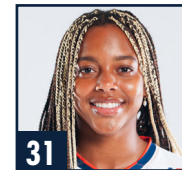
**25**  
Gracie  
**BROWN**  
MF » Fr.



**27**  
Ava  
**CALDWELL**  
MF » Fr.



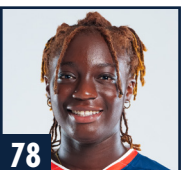
**28**  
Erin  
**HOUSTON**  
D » Jr.



**31**  
Jordyn  
**CROSBY**  
F » So.



**77**  
Mya  
**WILLIAMS**  
F » R-Fr.



**78**  
Jenna  
**SAPONG**  
GK » R-Fr.



**HC**  
Karen  
**HOPPA**  
26th season



**AC**  
Ben  
**MADSEN**  
13th season



**AC**  
Kelly  
**MADSEN**  
2nd season



**AC**  
Christina  
**WAKEFIELD**  
1st season



**DO**  
Amy  
**REIF**  
7th season