



2024-25 MEDIA GUIDE

# WOMEN'S GOLF



# TABLE OF CONTENTS

Table of Contents..... 1  
 2024-25 Schedule..... 2  
 2024-25 Roster..... 3  
 Coaches Bios ..... 4-7  
 Administration Bios ..... 8-9  
 Player Bios ..... 10-18  
 Facilities..... 19  
 About Auburn..... 20-21  
 2023-24 Season-In-Review..... 22-25  
 Records..... 26-30  
 Awards and Honors ..... 31-34  
 Prestigious Invitations..... 35-36  
 Year-by-Year Results..... 37-47  
 SEC Championship History ..... 48-51  
 NCAA Regional History..... 52-53  
 NCAA Championship History..... 54-55  
 Letterwinners ..... 56

# MEDIA INFORMATION

## INTERVIEWS

All interview requests for Auburn head coach Melissa Luellen and Auburn student-athletes should be made to Riley Hubbard. Interviews on tournament days will be conducted following the conclusion of competition. Events to all home tournaments are free and media are not credentialed.

## AUBURNTIGERS.COM

AuburnTigers.com is the official home for information on the Auburn women’s golf team, as well as head coach Melissa Luellen. The website includes rosters and the 2023-24 schedule. Information is also available on Instagram, Facebook and X.

## FACILITIES

The home of the Auburn men’s and women’s golf programs is the Jack Key Golf Teaching Facility. The team’s home course is the Auburn University Club.

# QUICK FACTS

## GENERAL INFORMATION

School..... Auburn University  
 City / Zip..... Auburn, Ala. / 36831  
 Founded..... Oct. 1, 1856  
 Enrollment ..... 30,737  
 Nickname ..... Tigers  
 Colors..... Burnt Orange and Navy Blue  
 Affiliation ..... NCAA Division I  
 Conference..... Southeastern Conference  
 President..... Dr. Christopher B. Roberts  
 Alma Mater ..... Missouri (1990)  
 Athletic Director..... John Cohen  
 Alma Mater ..... Mississippi State (1990)  
 Sport Administrator..... Joy Vrbka  
 Alma Mater..... Florida (2003)  
 University Website ..... www.Auburn.edu

## COACHING STAFF

Head Coach ..... Melissa Luellen (Tulsa, 1988)  
 Season..... 10th  
 Associate Head Coach .... Kim Hall (Stanford, 2003)  
 Assistant Coach ..... CJ Easley (Ole Miss, 2024)  
 Office Phone..... (352) 333-9100

## GOLF INFORMATION

Inaugural Season..... 1972  
 Season of Golf..... 50  
 NCAA Tournament Appearances ..... 22  
 SEC Championships..... 10

## MEDIA RELATIONS

Women’s Golf SID ..... Riley Hubbard  
 E-mail ..... rhu Hubbard@auburn.edu  
 Cell Phone ..... 334.707.6444  
 Main Office Phone..... 334.844.9800  
 Website ..... www.AuburnTigers.com  
 Facebook ..... facebook.com/AuburnWGolf  
 X..... @AuburnWGolf  
 Instagram ..... @AuburnWGolf

2024-25 media guide design and updates by Auburn communications assistant Riley Hubbard



## 2024-25 TOURNAMENT SCHEDULE

Date	Event	Location	Course
Sep. 9-10	Cougar Classic	Yeaman's Hall Club	Charleston, SC
Sep. 21-23	Schooner Fall Classic	Jimmy Austin GC	Norman, OK
Oct. 7-8	Illini Women's Invitational	Medinah CC	Medinah, IL
Oct. 21-23	The Ally McDonald at Old Waverly	Old Waverly GC	West Point, MS
Feb. 3-5	Lady Puerto Rico Classic	Grand Reserve GC	Rio Mar, PR
Feb. 16-18	Moon Golf Invitational	Suntree CC	Melbourne, FL
Mar. 3-5	Darius Rucker Intercollegiate	Long Cove Club	Hilton Head, SC
Mar. 17-18	Old Barnwell Derby Match Play	Old Barnwell Club	Aiken, SC
Mar. 24-25	Charles Schwab Women's Inv.	Colonial CC	Fort Worth, TX
Mar. 30-31	Auburn Individual	Auburn University Club	Auburn, AL
April 14-18	SEC Championship	Belleair, FL	Pelican GC
May 5-7	NCAA Regional	TBD	TBD
May 16-21	NCAA Championship	Carlsbad, CA	Omni La Costa- Champions



**PLAYERS**



**Katie Cranston**  
Sophomore  
Oakville, Canada



**Balma Davalos Guaita**  
Freshman  
Castellón de la Plana



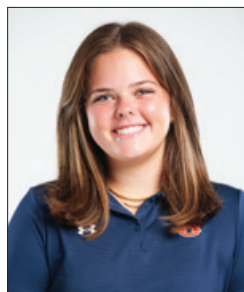
**Anna Davis**  
Freshman  
Spring Valley, California



**Anne Fernandez**  
Freshman  
Singapore



**Rachel Gourley**  
Junior  
Northumberland, England



**Elle Squires**  
Junior  
Vestavia Hills, Alabama



**Casey Weidenfeld**  
Redshirt Sophomore  
Pembroke Pines, Florida



**Carys Worby**  
Redshirt Sophomore  
Pembrokeshire, Wales

**COACHING/SUPPORT STAFF**



**Melissa Luellen**  
Head Coach



**Kim Hall**  
Associate Head Coach



**CJ Easley**  
Assistant Coach



**Joan Alexander**  
Director of Operations



**Riley Hubbard**  
Sports Information Director



**Matt Smith**  
Strength & Conditioning  
Coach



**Catherine Gordon**  
Trainer



**Joy Vrbka**  
Sport Administrator



**Allison Batts**  
Academic Counselor



## Melissa Luellen Head Coach

### PERSONAL

Hometown	Tulsa, Oklahoma
Alma Mater	Tulsa
Family	Husband- Mark Son- Drake Daughter- Sydney

### COACHING HISTORY

Auburn - Head	2015-
Arizona State - Head	2003-15
Tulsa - Head	2001-02

Melissa Luellen is entering her tenth season as Auburn's head women's golf coach in 2024-25. She came to Auburn after spending the previous 13 years as the head coach at Arizona State, leading the program to an NCAA title in 2009, and then two years prior to that as the head coach at the University of Tulsa.

While at Auburn, Luellen guided the Tigers to three consecutive appearances in the NCAA Championship from 2019-2022, including a top-four finish in 2019 and 2022.

Auburn captured two tournament victories during the 2023-24 season at the Liz Murphey Collegiate Classic and the NCAA Auburn Regional and finished within the top-5 in nine tournaments. The team recorded the best team scoring average in program history (287.35) and tied the second-lowest 18-hole score in program history at the Mason Rudolph Championship (274). The Tigers finished the stroke play portion of the SEC Championship and reached the quarterfinal round of match play. The team reached match play at the NCAA Championship for the fourth time since 2019 and finished the season as national quarterfinalists. Freshman Anna Davis was awarded second-team WGCA All-American and WGCA All-Freshman team honors while Davis, Megan Schofill and

Casey Weidenfeld were tabbed second team All-SEC.

During the 2022-23 season, the Tigers finished in the top-5 in nine of 11 events played with two victories at the prestigious East Lake Cup in Atlanta and the Liz Murphey Collegiate Classic in Athens, Georgia. The team captured a second place finish during the stroke play portion of the 2023 SEC Championship and earned the team's sixth consecutive NCAA Regional bid and the 28th in program history. The team set the second lowest all-time overall scoring average (290.73), par-4 scoring average (4.16), par-5 scoring average (4.89) and the lowest all-time par-3 scoring average (3.14). The Tigers also set the record for lowest 54-hole team score (835) as well as the second lowest 18-hole team score (274) at the Illini Women's Invitational.

Senior Megan Schofill received the program's 12th first-team All-American honor following the 2022-23 season and was a first team All-SEC member as well. Schofill and junior Elina Sinz each earned individual victories at the Mason Rudolph Championship and the Liz Murphey Collegiate Classic, respectively. Junior Anna Foster received a second-team All-SEC nod and Casey Weidenfeld became the 10th Auburn golfer to be named to the SEC All-Freshman team.

In the 2021-22 season, the Tigers captured seven top five finishes and won the stroke play portion of the SEC Championship. They went on to finish in a tie for third at the NCAA Stillwater Regional and finished as a semifinalist at the NCAA Championship in Scottsdale.

In 2019-20, the season was cut short due to the COVID-19 pandemic. In seven tournaments, Auburn finished top five in five of them and won the Lake Oconee Invitational. Kaleigh Telfer and Megan Schofill both earned individual medalist honors with Telfer winning the Northrop Grumman Regional Challenge and Schofill taking first at Lake Oconee.

The 2018-19 season proved to be a breakthrough season for Auburn under Luellen. Not only did the team finish as a national semifinalist, they also captured two tournament victories: the Battle at the Beach and the Shootout at Shoal Creek. The Tigers tied for third in the SEC Championship, making it to the semifinals of match play, and they placed fifth in the NCAA Auburn Regional to earn their spot in the NCAA Championship.

Individually, four different players won titles in 2018-19 with Anika Bolcikova (Magnolia Invitational), Kaleigh Telfer (Battle at the Beach), Brooke Sansom (Shootout at Shoal Creek) and Julie McCarthy (Clemson Invitational). It's the first time that's happened since the 2011-12 season.

Julie McCarthy, who finished with the sixth-lowest stroke average per round (72.90) in single-season history, earned First-Team All-SEC and Honorable Mention All-American honors while teammate Brooke Sansom was named to the All-SEC Freshman Team.

In 2017-18, Luellen's third season on The Plains, Auburn made its first trip back to the NCAA Championship since 2013 after finishing third in the NCAA Austin Regional. The Tigers placed fifth or better in five tournaments and also earned one individual title (Kayley Marschke, Lake Oconee Individual Championship). Senior Kelli Murphy was named to the All-SEC Second Team, and Kaleigh Telfer made the All-SEC Freshman Team.

During her very successful tenure at Arizona State, Luellen led the program to an NCAA team title, 10 NCAA Top 10 finishes, two conference championships and 25 team titles. She also coached one NCAA Individual Champion, three Pac-12 Golfers of the Year, three NGCA Freshmen of the Year, 14 All-Americans and 21 individual tournament medalists.

Luellen's coaching accomplishments have earned her several personal coaching honors. After the Sun Devils' NCAA Championship run in 2009, she was named SkyCaddie NGCA National Coach of the Year. Luellen was also named Pac-10 Coach of the Year three times (2006, 2007, 2009) and West Regional Coach of the Year four times (2005, 2006, 2007, 2009). While at Tulsa, Luellen was named Central Regional Coach of the Year in 2002 and WAC Coach of the Year in 2001 and 2002.

Luellen's golfers have also achieved excellence in the classroom. NCAA Champion Azahara Munoz became the first two-time winner of the Edith Cummings Munson Award, which is given to the All-American with the highest grade point average. The following year, Sun Devil Juliana Murcia won the same honor.

In her two seasons as Tulsa's head coach, Luellen led her alma mater to seven tournament titles including back-to-back Western Athletic Conference and NCAA Central Regional championships in each year. The 2001-02 season saw her team win five tournaments, including the 2002 PING/ASU Championship at Karsten Golf Course, earn a No. 3 national ranking for most of the season, and finish 12th at the 2002 NCAA Championships. Luellen was named the Western Athletic Conference Coach of the Year in each of her two seasons and was the 2002 Central Regional Coach of the Year.

A four-time All-American for the Golden Hurricane, Luellen succeeded her mother, Dale McNamara, who retired in 2000 following a 26-year career that included four national championships.

As a player at Tulsa, Luellen won medalist honors at four tournaments and recorded 22 top-10 finishes in 41 career events. She capped off a stellar collegiate career by capturing a two-stroke individual victory at the 1988 NCAA Championship while leading the Golden Hurricanes to the national team title.

After graduating with a bachelor's degree in Marketing from Tulsa in 1988, Luellen competed on the Futures and Ladies European Tours in 1988 and 1989 before qualifying for the LPGA Tour in October of 1989. She spent 11 years on the LPGA Tour, winning the 1991 Stratton Mountain LPGA Classic and teamed with Mike Springer to win the 1993 JC Penney Classic. She was also elected to the LPGA Executive Committee in her final two years on the tour.

Prior to college, she was a three-time Oklahoma state high school champion, a two-time Women's Oklahoma Golf Association Girls' Junior Champion (1981, 1982), the 1983 WOGA State Amateur, and the 1983 AJGA Player of the Year. Luellen was inducted into the Women's Golf Coaches Association Player Hall of Fame in 1998, the WGCA Coaches Hall of Fame in 2014 and the University of Tulsa Athletic Hall of Fame in 2000.

Luellen and her husband, Mark, have a son, Drake, and a daughter, Sydney.



## **Kim Hall**

### **Associate Head Coach**

#### **PERSONAL**

Hometown San Antonio, TX  
Alma Mater Stanford

#### **COACHING HISTORY**

Auburn- Associate 2022-  
Auburn - Assistant 2020-2022  
Auburn - Volunteer 2018-2020

Former LPGA and Stanford golfer Kim Hall joined the Auburn women's golf staff as a volunteer assistant coach prior to the 2018-19 season. Head coach Melissa Luellen then named Hall assistant coach on April 8th, 2020 and Hall was promoted to associate head coach before the 2022-23 season.

Hall, a native of San Antonio, Texas, played five full seasons on the LPGA Tour from 2006-10, serving three seasons as Player Vice President on the LPGA Board of Directors. Her top finish as a professional was a third-place showing at the 2008 Bell Micro LPGA Classic. She retired from full-time competition in 2010 after the birth of her first child.

Hall was a four-year letter winner at Stanford from 1999-2003. She was the team MVP for two seasons, earning one victory along with 13 top-10 finishes. She was also a three-time selection to the All-Pac 10 Team. Hall graduated from Stanford in 2003 with a degree in American studies and a minor in political science.

As a junior golfer in San Antonio, she was the 1996 Texas state champion, the 1997 South Texas Player of the Year and a four-time junior All-American.

The former Kim Rowton is married to Casey Hall, and the couple resides in Auburn with their two children, Maggie and AJ.



## CJ Easley Assistant Coach

### PERSONAL

Hometown Oxford, MS  
Alma Mater Ole Miss

### COACHING HISTORY

Auburn- Assistant 2024-

CJ Easley joined the Auburn women’s golf coaching staff as an assistant coach in July of 2024. Easley has experience playing collegiate golf at both Auburn and Ole Miss.

Easley arrived on the Plains as a freshman prior to the 2019-20 season and played three years for the Tigers before transferring to Ole Miss for his final two years of eligibility. Easley appeared in six tournaments for Auburn during the 2020-21 season and 10 events the following season.

The Oxford, Mississippi native was named an All-American Scholar, to the SEC

Academic Honor Roll twice and to the SEC First-Year Academic Honor Roll in 2020.

As a junior player, Easley won three state championships at Oxford High School and was ranked as the No. 2 player in the state and the No. 38 player in his class according to Golfweek.





## **Christopher B. Roberts** **University President**

Christopher B. Roberts began his appointment as Auburn University's 21st president in May 2022.

President Roberts leads the university's four divisions, including Auburn's main campus with its more than 31,000 students and 5,500 faculty and staff, as well as Auburn University at Montgomery, the Alabama Cooperative Extension System and the Alabama Agricultural Experiment Station, a joint enterprise with Alabama A&M University. Roberts is an accomplished scholar who understands that research and teaching excellence, together with service and public engagement, are at the very heart of the state's R1 land-, sea- and space-grant institution. The R1 designation in the Carnegie Classification of Institutions of Higher Education recognizes Auburn as a top-level research institution. As the university's CEO, Roberts marshals the institution's \$1.54 billion annual budget and vast resources, while spearheading the university's strategic vision and advancing the Auburn's ever-growing research enterprise and economic development.

Prior to his presidency, Roberts served as the dean of Auburn's Samuel Ginn College of Engineering from 2012 to 2022. The college has more than 6,000 students and about 400 faculty and staff members. Roberts was a factor in the success of the university's Because This is Auburn – A Campaign for Auburn University, which raised \$1.2 billion. Under Roberts' leadership, more than \$357 million in donations to the college were made during and since the campaign.

He earned a bachelor's degree in chemical engineering from the University of Missouri and master's and doctoral degrees in chemical engineering from the University of Notre Dame. He began his career at Auburn in 1994 as an assistant professor in the Department of Chemical Engineering and became department chair in 2003. He also served as the George E. and Dorothy Stafford Uthlaut Professor of Chemical Engineering. He has a strong record of scholarly and academic achievement in nanotechnology and synthetic fuels. Roberts has published close to 150 peer-reviewed journal articles and book chapters in leading chemical engineering, chemistry, materials and related journals and has given over 300 conference presentations, invited seminars and lectures. He has received 45 research grants and contracts from government agencies and corporations, such as the National Science Foundation, U.S. Department of Energy, U.S. Department of Defense, the USDA-Agriculture and Food Research Initiative and Boeing.

He has been honored with numerous awards for his accomplishments and contributions to the field of engineering. Some of those recognitions include the University of Notre Dame's Graduate School Distinguished Alumnus Award in 2015; the University of Missouri's Chemical Engineering Academy of Distinguished Alumni in 2014; and the National Organization of Black Chemists and Chemical Engineers President's Award for Fostering Minority Engagement in 2012 and the SEC Academic Consortium Faculty Achievement Award in 2012.

He and his wife, Tracy, have two children and enjoy cheering on Auburn's national championship-winning Division 1 athletics programs.

In his almost 30 years on the Plains, Roberts has come to value and cherish everything that makes the Auburn experience truly remarkable and distinctive. Through the university's successes, Auburn has earned the right to dream the biggest dreams. He said the university will strive to be "nothing short of excellent in all areas of our land-grant mission."



## **John Cohen** **Athletics Director**

John Cohen, who has more than two decades of experience as a coach and administrator in the Southeastern Conference, was named the 16th Director of Athletics at Auburn University on Oct. 31, 2022. Cohen spent the previous 14 years at Mississippi State in various capacities, most recently as the athletic director from 2016-22.

Cohen hit the ground running in his role as Auburn's athletic director as he immediately conducted an extensive search for a new head football coach and ultimately named Hugh Freeze to the role on Nov. 28, 2022, less than a month after Cohen arrived on the Plains.

Throughout Cohen's first 20 months at Auburn, athletics programs have achieved tremendous success, highlighted by men's golf winning the 2024 national championship, the 23rd national championship in the history of Auburn Athletics, as well as a pair of national runner-up finishes from men's track & field (2024) and equestrian (2023). Twenty of 21 programs have advanced to their respective NCAA postseason tournaments under Cohen's leadership.

Cohen has also played a major role in determining the final details of Plainsman Park's ongoing \$30 million expansion and renovation project as well as the approval of the Jordan-Hare Stadium north endzone videoboard expansion, among other facilities projects.

Cohen's career in college athletics began as a baseball player at Mississippi State before entering the coaching ranks for 25 years. A two-time SEC Coach of the Year, he was named MSU's director of athletics on November 4, 2016, and led the Bulldog program to record-breaking success athletically, academically and in capital project campaigns.

Athletically, Cohen oversaw arguably the greatest era in Bulldog history, highlighted by a 2021 College World Series Championship – the school's first team national title in any sport. A total of five Bulldog programs turned in a program-best season with Cohen at the helm of the department, including softball (2022), baseball (2021), volleyball (2021), soccer (2018) and women's basketball (2017, 2018).

After beginning his stint as the head baseball coach at MSU in July 2008, Cohen's official role in administration began in 2016 when he assumed the role of associate athletic director in addition to head baseball coach.

As the head coach at MSU, Cohen led the Bulldogs to the 2013 College World Series finals, a SEC regular season championship and a SEC Tournament title. In the classroom, 133 of his players were named to the SEC Academic Honor Roll, including three straight SEC Scholar-Athlete of the Year winners from 2013-15.

As a baseball player for the Bulldogs, Cohen was a key member of the 1989 SEC Champion and 1990 College World Series teams. He graduated from MSU with a degree in English and earned a master's degree in sports management from Missouri.

Prior to becoming the head coach at MSU, Cohen's coaching career included assistant coaching stops at Missouri (1992-97) and Florida (2002-03) and head coaching stops at Northwestern State (1998-2001) and Kentucky (2004-08).



# Katie Cranston

## Sophomore - Oakville, Canada

### AS A SOPHOMORE (2023-24)

- Played in 12 events; 73.94 scoring average
- Finished tied for 11th at both the Lady Bulldog Individual (75, +3) and the SEC Championship (212, +2)
- Recorded 91 birdies and two eagles

### AS A FRESHMAN (2022-23)

- Played in six events and posted a 73.94 scoring average after joining the team in January
- Tied second lowest round in program history with a 65 (-7) during the second round of the Moon Golf Invitational

### PRIOR TO AUBURN

Winner of the 2022 Porter Cup Women’s Amateur ... Winner of the 2022 Dustin Johnson World Junior ... Winner of the 2022 Scott Robertson Memorial ... Qualified for the 2022 US Junior Championship ... Qualified for the 2021 US Women’s Amateur ... Participant in the 2022 LPGA CP Canadian Women’s Open

### PERSONAL

Full name is Katherine Margaret Suzanne Cranston ... Parents are Andrew Cranston and Suzanne Tennier ... Has two brothers, Iain and Alastair ... Was born in Helisinki, Finland.

## CRANSTON’S CAREER RESULTS

Year	Tourn.	Rounds	Team	Low 54	Low 18	Wins	Top 5	Top 10	Top 20	Scoring Avg.
2022-23	6	17	16	214	65	0	1	1	2	73.94
2023-24	12	35	23	212	68	-	-	-	4	73.94
<b>Career</b>	<b>18</b>	<b>52</b>		<b>212</b>	<b>65</b>	<b>0</b>	<b>1</b>	<b>1</b>	<b>5</b>	<b>73.94</b>



## **Balma Dávalos Guaita**

### **Freshman - Castellón de la Plana, Spain**

**PRIOR TO AUBURN**

Held a European Golf ranking of 22nd in her class ... 2022 Celia Barquain Championship winner ... 2023 Sergio Garcia Invitational champion ... Member of the Spanish Junior National Team ... Runner-up at the Annika European Invitational ... 2023 British Junior Girls Championship quarterfinalist



# Anna Davis

## Sophomore - Spring Valley, CA

### AS A FRESHMAN (2024)

- Played in eight events after joining team in January; 71.68 scoring average fourth best for a single season in program history
- Named second-team WGCA All-American and WGCA All-Freshman Team
- Second-team All-SEC and SEC All-Freshman selection
- Lowest Auburn finisher in four events
- Shot 211 (-5) to win individual title at NCAA Auburn Regional
- Individual runner-up at Liz Murphey Collegiate Classic after shooting 213 (-3)
- Named SEC Co-Freshman of the Week (4/3/24)
- Tied lowest 54-hole score on the team with a 206 (-4) at SEC Championship
- 4.01 par-4 scoring average best for a single season in program history

### PRIOR TO AUBURN

2022 Augusta National Women’s Amateur Champion ... 2023 World Amateur Team USA member... 2023 Junior Ryder Cup Team member ... 2023 Pan American Games Team member ... 2021 Girls Junior PGA Championship winner ... 2023 & 2021 Junior Solheim Cup Team member ... 2021 & 2022 AJGA Rolex Junior All-American

### PERSONAL

Full name is Anna Kosonoy Davis ... Partents are William Davis and Beatriz Kosonoy ... Brother, Billy, is a member of the Auburn men’s golf ... Home course is San Diego Country Club in Chula Vista, California

### CAREER ACCOLADES

Augusta National Women’s Amateur Champion (2022)  
 WGCA All-American (2024-Second Team)  
 WGCA All-Freshman Team (2024)  
 All-SEC (2024- Second Team)  
 SEC All-Freshman Team (2024)  
 Arnold Palmer Cup Team USA Selection (2024)  
 1x Individual Winner: NCAA Auburn Regional (2024)  
 SEC Freshman of the Week (4/3/24)  
 3x Augusta National Women’s Amateur Invitee (2024, 2023, 2022)

### DAVIS’ CAREER RESULTS

Year	Tourn.	Rounds	Team	Low 54	Low 18	Wins	Top 5	Top 10	Top 20	Scoring Avg.
2023-24	8	25	23	206	68	1	3	4	6	71.68
<b>Career</b>	<b>8</b>	<b>25</b>		<b>206</b>	<b>68</b>	<b>1</b>	<b>3</b>	<b>4</b>	<b>6</b>	<b>71.68</b>



## **Anne Fernandez** **Freshman - Singapore**

### **PRIOR TO AUBURN**

2022 AJGA Mizuno/Keith Mitchell Junior Champion ... 2022 Jimmy Self Invitational Champion ... 2022 Annual Blade Junior Champion ... 2023 Ladies European Tour Aramco Team Series participant ... Became first singaporean to qualify for match play at the Ladies British Amateur Championship in 2023 ... student at Albany Golf Academy in Bahamas for six years ... winner of 13 total junior events

### **PERSONAL**

Parents are Ignasius Fernandez and Vanderlyn Tham ... has one brother and one sister ... Home course is Singapore Island Country Club ... Birthday is April 1st



## Rachel Gourley Junior - Northumberland, England

### AS A SOPHOMORE (2023-24)

- Played in three events
- Best finish was tied for 17th place at the Lady Bulldog Individual (76, +4)

### AS A FRESHMAN (2022-23)

- Played in five events
- Shot lowest round of the season during round two of the Illini Women's Invitational (69)

### CAREER ACCOLADES

Spring SEC Academic Honor Roll (2024)  
SEC First-Year Academic Honor Roll (2023)

### PRIOR TO AUBURN

Represented England in England v Spain match in 2019 ... Honored with England U16 Hazard association award in 2020 ... Was the Justin Rose Junior Telegraph Finals Winner in 2021 ... Represented England in a winning effort in the Girls and Boys Home Internationals in 2021 & 2022 ... Winner of the Scottish Girls Open Chamionship in 2022 ... Winner of the Rose Ladies Series event at Walton Heath in 2022 ... Reached semifinal match at the British Girls Championship in 2022.

### PERSONAL

Full name is Rachel Louise Gourley ... Parents are Anthony and Emma Louise Gourley ... Home course is Arcot Hall Golf Club in Cramlington, England ... Was born in Ashington, England

### GOURLEY'S CAREER RESULTS

Year	Tourn.	Rounds	Team	Low 54	Low 18	Wins	Top 5	Top 10	Top 20	Scoring Avg.
2022-23	5	13	3	220	69	0	0	0	1	77.46
2023-24	3	7	1	226	73	-	-	-	1	76.57
<b>Career</b>	<b>8</b>	<b>20</b>		<b>220</b>	<b>69</b>	<b>0</b>	<b>0</b>	<b>0</b>	<b>2</b>	<b>1543</b>



## **Elle Squires** **Junior - Vestavia Hills, AL**

### **PRIOR TO AUBURN**

Played on the Vestavia Hills Varsity Golf Team for four years ... Played in the Girls State Championship in 2020 and 2021 ... Played on the Southeastern Junior Golf Tour

### **PERSONAL**

Full name is Emalee Elizabeth Squires ... Parents K.C. and Sarah both attended Auburn ... Grandparents Bill and Mary Stegall both attended Auburn ... Grandfather, Bill, played football at Auburn ... Has two sisters, Aubrey and Evelyn ... Sister Evelyn currently attends Auburn ... Home course is Shoal Creek Golf Club ... Served in the Student Government Association for two years as Director of Videography and Assistant Vice President of Media Operations ... Formerly worked for War Eagle Creative on the student media team ... Birthday is January 26





## Casey Weidenfeld

### R-Junior - Pembroke Pines, FL

#### CAREER ACCOLADES

All-SEC (2024- Second-Team)  
 SEC All-Freshman Team (2023)  
 SEC Freshman of the Week  
 (11/2/23)  
 Augusta National Women's  
 Amateur Invitee (2024)  
 WGCA All-American Scholar  
 (2023)  
 Spring SEC Academic Honor Roll  
 (2023, 2024)  
 First-Year SEC Academic Honor  
 Roll (2022)

#### AS A REDSHIRT SOPHOMORE (2023-24)

- Played in 12 events; 72.35 scoring average
- Named second team All-SEC
- Lowest Auburn finisher in three events
- Runner-up individual finishes at both the Mason Rudolph Championship (206, -10) and Tar Heel Invitational (206, -10)
- Four top-10 individual finishes
- Tied fourth-lowest 54-hole score in program history with a 206 (-10) at Mason Rudolph Championship and Tar Heel Invitational
- Tied third-lowest round in program history with a 65 (-7) during the final round of the Tar Heel Invitational
- 112 birdies tied for second-most in a single season in program history
- Recorded 16 rounds under par, which is tied for most in a single season in program history
- 4.03 par-4 scoring average third-lowest for a single season in program history

#### AS A REDSHIRT FRESHMAN (2022-23)

- Played in 10 events and posted a 73.33 scoring average
- Tied 11th lowest 54-hole score in program history at the Illini Women's Invitational with a 208 (-8) and shot career low 68 in second round
- Recorded best finish (T10) at the Moon Golf Invitational with a 210 (-6)
- Clinched East Lake Cup semifinal victory over Oregon
- SEC Freshman of the Week (11/2/22)
- Named to SEC All-Freshman Team

#### AS A FRESHMAN (2021-22)

Redshirted the 2021-22 season

#### PRIOR TO AUBURN

Won 2020 AJGA Girls Championship, setting the course 18-hole record (64) and the tournament record (-11) ... Part of the winning 2021 AJGA Wyndham Cup East Team ... 3-time AJGA winner ... 2-time AJGA Rolex Junior All-American Honorable Mention ... At North & South Women's Amateur, reached round of 16 in 2021; round of 32 in 2020 ... 2-time USGA Women's Amateur Four-Ball Runner-Up (2019, 2021) ... 3-time FHSAA Class 2A Team State Champion ... 2018 FHSAA Class 2A

Individual Champion ... 2018 Broward Girls Golfer of the Year for Sun Sentinel and Miami Herald ... 2020 AJGA Scholastic Junior All-American.

**PERSONAL**

Full name is Casey Briana Weidenfeld ... Parents are Andrew and Tracy Weidenfeld ... Majoring in Creative Writing ... Is the author of two published novels ... Birthday is September 15

**WEIDENFELD'S CAREER RESULTS**

Year	Tourn.	Rounds	Team	Low 54	Low 18	Wins	Top 5	Top 10	Top 20	Scoring Avg.
2022-23	10	27	22	208	68	0	0	1	5	73.33
2023-24	12	37	34	206	65	-	2	4	6	72.35
<b>Career</b>	<b>22</b>	<b>64</b>		<b>206</b>	<b>65</b>	<b>0</b>	<b>2</b>	<b>4</b>	<b>10</b>	<b>72.64</b>



# Carys Worby

## R-Junior - Pembroke, Wales

### AS A REDSHIRT SOPHOMORE (2023-24)

- Played in five events
- Best finish was a tie for 22nd place at the Lady Bulldog Individual (78, +6)

### AS A REDSHIRT FRESHMAN (2022-23)

- Played in four events and recorded a 74.00 scoring average
- Finished runner-up at the Pinetree Women's Collegiate with a 211 (-5)
- Named SEC Freshman of the Week (4/5/23)

### AS A FRESHMAN (2021-22)

Redshirted the 2021-22 season

### CAREER ACCOLADES

SEC Freshman of the Week (4/5/23)  
 Spring SEC Academic Honor Roll (2023, 2024)  
 First-Year SEC Academic Honor Roll (2022)

### PRIOR TO AUBURN

Winner of the Welsh Girls Championship in 2019 ... Represented Great Britain and Ireland in the Junior Vagliano ... Trophy First player to ever win both the ladies and girls Welsh order of merit in the same year

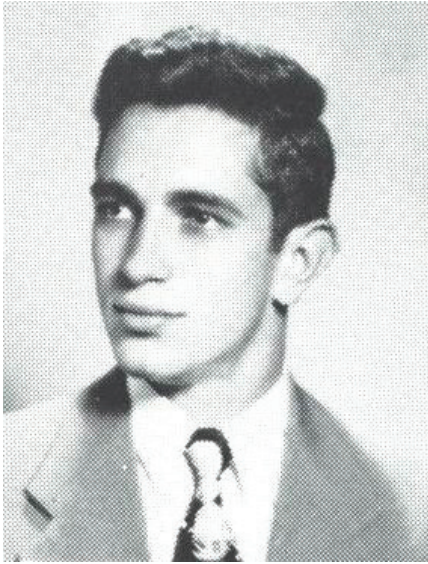
### PERSONAL

Parents are Iain and Sarah Worby ... Has a brother, Geraint ... Home course is Newport Links GC ... Was born in Pembroke, Wales

### WORBY'S CAREER RESULTS

Year	Tourn.	Rounds	Team	Low 54	Low 18	Wins	Top 5	Top 10	Top 20	Scoring Avg.
2022-23	4	10	4	211	69	0	1	1	2	74.00
2023-24	5	13	2	221	70	-	-	-	-	75.77
<b>Career</b>	<b>9</b>	<b>23</b>		<b>211</b>	<b>69</b>	<b>0</b>	<b>1</b>	<b>1</b>	<b>2</b>	<b>75.00</b>

## Jack Key Golf Teaching Facility



The Jack Key Golf Teaching Facility is named after Jack Key, a 1950 Auburn graduate and four-year letterman from Columbus, Georgia and features three indoor hitting bays, lounge and locker rooms, club repair and video analysis. Utilizing 29 acres, the practice facility features a range of nearly 400 yards with tees at both ends allowing players to train in a variety of wind conditions.



# About Auburn University



Auburn University has developed into one of the largest universities in the South, remaining in the educational forefront with its traditional blend of arts and applied science, and changing with the needs of today while living with a respect for the traditions and spirit that are Auburn.

Auburn was established in 1856 as the East Alabama Male College, 20 years after the city of Auburn's founding. In 1872, under the Morrill Act, the school became the first land-grant college in the South and was renamed the Agricultural and Mechanical College of Alabama. In 1899 the name again was changed, to the Alabama Polytechnic Institute. Finally, in 1960 the name of the school was changed to Auburn University, a title more in keeping with its location, and expressing the varied academic programs and larger curriculum of a major university.

Auburn University today is a comprehensive land, sea and space grant institution -- among the few that hold that distinction -- helping fulfill the dreams of more than 25,000 students.

Auburn's beautiful main campus -- graced by greenery and open spaces and highlighted by historic Samford Park -- is made up of 90 major academic buildings spread across 1,843 acres. Buildings in the main campus area are within walking distance of each other. Residence halls are only a short walk from classrooms, dining and athletics facilities. Auburn is located in the southeastern United States in east-central Alabama about 30 miles from the Georgia border.

From 1861 to 1866 the college was closed because of the Civil War. The college had begun an affiliation with the Methodist Church before the war. Due to dire financial straits, the church transferred legal control of the institution to the state in 1872, making it the first land-grant college in the South to be established separate from the state university. It thus became the Agricultural and Mechanical College of Alabama.

Women were admitted in 1892, making Auburn the oldest four-year, coeducational school in the state and the second-oldest in the Southeast.

In 1899, the name was again changed to the Alabama Polytechnic Institute. In 1960, the school officially acquired the name it has long been called and one more in keeping with its location, size, and mission -- Auburn University. The institution has experienced its greatest growth since World War II, and now has more than 250,000 graduates.

## The War Eagle Story



According to legend, football and the cry “War Eagle” came to Auburn on the same day. It was February 20, 1982, the day Auburn and Georgia met in the first game of what is now the longest continuous football rivalry in the deep South.

In 1864 at the Battle of the Wilderness in Virginia during the American Civil War, an Auburn student fighting in the battle was wounded and when the armies retreated to their respective lines, he was left on the battlefield for dead. When he regained consciousness, there were only two living things as far as he could see: himself and a baby eagle.

The soldier took the wounded bird with him and nursed it back to health. When he returned to attend school at Auburn, the eagle came with him. The student ultimately became a member of the Auburn faculty and he was there that day in Atlanta’s Piedmont Park when Auburn and Georgia met in what was later referred to as “The Game of the Century”. As usual, the eagle- called War Eagle because of the circumstances under which he was found- was there with him.

When Auburn scored the first touchdown, the old eagle broke free from its master and began to soar above the field. Auburn fans looked skyward, saw the familiar animal, and shouted “War Eagle”. According to witnesses, Auburn then began a steady march toward the end zone.

At the end of the game that Auburn won 10-0, the old eagle collapsed and died, having given his all in pursuit of victory for Auburn. War Eagle may have passed that day, but his spirit lives forever in the hearts of Auburn men and women.

Auburn’s athletic teams are known as “The Auburn Tigers”, but the battle cry of the Auburn faithful is “War Eagle”. The battle cry is not a mascot or a nickname of the school.

Since the first War Eagle, there have been seven others throughout Auburn’s history that have served as a symbol of the Auburn spirit and kept alive the legendary battle cry. Since 2000, an eagle has flown prior to all Auburn Football home games as tradition.

# WAR EAGLE

## 2023-24 Season In Review

Auburn captured two tournament victories during the 2023-24 season at the Liz Murphey Collegiate Classic and the NCAA Auburn Regional and finished within the top-5 in nine tournaments.

The team recorded the best team scoring average in program history (287.35) and tied the second-lowest 18-hole score in program history at the Mason Rudolph Championship (274). The Tigers finished the stroke play portion of the SEC Championship and reached the quarterfinal round of match play.

Auburn reached match play at the NCAA Championship for the fourth time since 2019 and finished the season as national quarter-finalists. The team also tied the second-lowest 18-hole score in program history at Mason Rudolph Championship (274). Auburn was the only school in the nation to have its men's and women's programs both qualify for the match play portion of the NCAA Championship.

Freshman Anna Davis was awarded second-team WGCA All-American and WGCA All-Freshman team honors while Davis, Megan Schofill and Casey Weidenfeld were each tabbed second team All-SEC.

Davis won low medalist at NCAA Auburn Regional (211, -5), was runner-up at the Liz Murphey Collegiate Classic and finished top-5 at the SEC Championship. Schofill had four top-10 individual finishes and Weidenfeld tied the fourth-lowest 54-hole score in program history with a 206 (-10) at Mason Rudolph Championship and Tar Heel Invitational. Weidenfeld also tied the third-lowest round in program history with a 65 (-7) during the final round of the Tar Heel Invitational

Schofill and Weidenfeld each recorded 112 birdies, which is second-most in a single season in program history.

### 2023-24 TOURNAMENT RESULTS

Date	Tournament	Location	Finish	Score	Top Individual
Sept. 22-24	Mason Rudolph Champ.	Franklin, TN	2nd/18	843 (-21)	Weidenfeld (T2)
Oct. 2-3	Windy City Classic	Golf, IL	T10th/15	864 (E)	Schofill (T37)
Oct. 9-10	Ruth's Chris Tar Heel Inv.	Chapel Hill, NC	2nd/14	856 (-8)	Weidenfeld (2)
Oct. 20-22	Stanford Intercollegiate	Stanford, CA	T12th/19	874 (+22)	Giancha... (T29)
Feb. 4-6	Lady Puerto Rico Classic	Rio Mar, PR	3rd/15	856 (-8)	Schofill (T3)
Feb. 18-20	Moon Golf Invitational	Melbourne, FL	2nd/17	866 (+2)	Schofill (T17)
Mar. 4-6	Darius Rucker Intercollegiate	Hilton Head, SC	3rd/17	857 (+5)	Weidenfeld (6)
Mar 9-10	Valspar Invitational	Augusta, GA	4th/17	865 (+1)	Schofill (T6)
Mar. 29-30	Liz Murphey Collegiate Classic	Athens, GA	1st/17	865 (+1)	Davis (T2)
Apr. 12-14	SEC Championship (Stroke)	Belleair, FL	2nd/14	840 (E)	Davis (4)
Apr. 15	SEC Match Play (vs. Georgia)	Belleair, FL	L	1-3-1	
May 6-8	NCAA Auburn Regional	Auburn, AL	1st/12	874 (+10)	Davis (1)
May 17-22	NCAA Championship (Stroke)	Carlsbad, CA	8th/30	1172 (+20)	Davis (T19)
May 23	NCAA QF (vs. Stanford)	Carlsbad, CA	L	1-4-0	



## 2023-24 INDIVIDUAL STATISTICS

Name	Tourn.	Rounds	Team	Low 54	Low 18	Wins	Top 5	Top 10	Top 20	Strokes	Stroke Avg.
Katie Cranston	12	35	23	212	68	-	-	-	4	2588	73.94
A. Sinclair-Curtis	-	-	-	-	-	-	-	-	-	-	-
Anna Davis	8	25	23	206	68	1	3	4	6	1792	71.68
Anna Foster	12	35	30	210	65	-	-	2	4	2553	72.94
Ami Gianchandani	6	18	13	211	64	-	-	-	2	1315	73.06
Rachel Gourley	3	7	1	226	73	-	-	-	1	536	76.57
Morgan Jones	-	-	-	-	-	-	-	-	-	-	-
Megan Schofill	11	34	29	208	66	-	3	5	8	2436	71.65
Casey Weidenfeld	12	37	34	206	65	-	2	4	6	2677	72.35
Carys Worby	5	13	2	221	70	-	-	-	-	985	75.77

## 2023-24 RECORDS VS. OPPONENTS

Alabama	6-0	Georgia Southern	4-0	Oregon	2-3
Albany	1-0	Houston	1-0	Oregon State	1-1
Arizona	1-1-1	Illinois	2-0	Pepperdine	1-0
Arizona State	2-2-1	Iowa State	2-0	Purdue	2-0
Arkansas	4-1	Kansas State	2-0	Rollins College	1-0
Augusta	3-0	Kennesaw State	1-0	San Diego State	1-0
Baylor	4-0	Kentucky	4-0	San Jose State	2-0
California-Berkley	0-1	Louisiana-Monroe	1-0	SMU	2-0
Campbell	1-0	Louisville	4-0	South Carolina	4-2
Charleston	2-0	LSU	3-3	Stanford	0-3
Clemson	2-1	Mercer	1-0	Tennessee	2-0
Cincinnati	1-0	Miami	2-0	Texas	2-2
Coastal Carolina	1-0	Michigan	3-2	Texas A&M	3-1
Colorado	1-0	Michigan State	2-0	TCU	1-0
Denver	2-0	Middle Tennessee	1-0	Tulsa	2-0
Duke	3-1	Minnesota	1-0	UCF	1-0
Emory	1-0	Mississippi State	4-0	UCLA	1-3
ETSU	1-0	Missouri	2-0	USC	0-3
FAU	1-0	NC State	2-0	USF	1-0
Florida	3-1	North Carolina	4-0	Vanderbilt	4-1
Florida State	4-0	Northwestern	2-3	Virginia	3-1
Furman	2-0	Ohio State	1-0	Virginia Tech	3-0
Georgia	6-2	Oklahoma State	3-0	Wake Forest	4-1
Georgia (B)	1-0	Ole Miss	5-1	Washington	1-0

**Overall****154-40-2****Southeastern Conference****51-12**



# 2023-24 Records

## LOW 18-HOLE SCORE

Rank	Player	Tournament	Score
1	Ami Gianchandani	Mason Rudolph	64
T2	Anna Foster	Puerto Rico Class.	65
T2	Casey Weidenfeld	Tar Heel Inv.	65
4	Megan Schofill	Mason Rudolph	66
T5	Casey Weidenfeld	Mason Rudolph	67
T5	Casey Weidenfeld	Darius Rucker Int.	67
T7	Katie Cranston	SEC Champ.	68
T7	Anna Davis	Darius Rucker Int.	68
T7	Anna Davis	Liz Murphey CC	68
T7	Anna Davis	SEC Champ.	68
T7	Megan Schofill	Puerto Rico Class.	68
T7	Megan Schofill	Valspar Invitational	68
T7	Megan Schofill	SEC Champ.	68
T7	Casey Weidenfeld	Mason Rudolph	68
T7	Casey Weidenfeld	SEC Champ.	68

## LOW 54-HOLE SCORE

Rank	Player	Tournament	Score
T1	Anna Davis	SEC Champ.	206
T1	Casey Weidenfeld	Mason Rudolph	206
T1	Casey Weidenfeld	Tar Heel Inv.	206
4	Megan Schofill	Mason Rudolph	208
5	Megan Schofill	Puerto Rico Class.	209
T6	Anna Foster	Puerto Rico Class.	210
T6	Casey Weidenfeld	Darius Rucker Int.	210
T8	Anna Davis	NCAA Regional	211
T8	Ami Gianchandani	Mason Rudolph	211
T8	Casey Weidenfeld	SEC Champ.	211

## SEASON SCORING AVERAGE

Rank	Player	Average
1	Megan Schofill	71.65
2	Anna Davis	71.68
3	Casey Weidenfeld	72.35
4	Anna Foster	72.94
5	Ami Gianchandani	73.06
6	Katie Cranston	73.94
7	Carys Worby	75.77
8	Rachel Gourley	76.57

## EAGLES

Rank	Player	Count
1	Katie Cranston	2
T2	Anna Davis	1
T2	Anna Foster	1
T2	Ami Gianchandani	1
T2	Megan Schofill	1
T2	Carys Worby	1

## BIRDIES

Rank	Player	Count
T1	Megan Schofill	112
T1	Casey Weidenfeld	112
3	Anna Foster	104
4	Katie Cranston	91
5	Anna Davis	79
6	Ami Gianchandani	52
7	Carys Worby	24
8	Rachel Gourley	12

## ROUNDS UNDER PAR

Rank	Player	Count
T1	Megan Schofill	16
T1	Casey Weidenfeld	16
3	Anna Davis	12
4	Anna Foster	10
5	Katie Cranston	5
6	Ami Gianchandani	4
7	Carys Worby	2

**PAR 3 SCORING**

Rank	Player	Average
1	Megan Schofill	3.01
2	Anna Davis	3.05
3	Ami Gianchandani	3.09
4	Anna Foster	3.13
5	Casey Weidenfeld	3.15
T6	Katie Cranston	3.18
T6	Carys Worby	3.18
8	Rachel Gourley	3.35

**PAR 4 SCORING**

Rank	Player	Average
1	Anna Davis	4.01
2	Casey Weidenfeld	4.03
3	Megan Schofill	4.04
T4	Anna Foster	4.15
T4	Ami Gianchandani	4.15
6	Katie Cranston	4.17
7	Carys Worby	4.32
8	Rachel Gourley	4.36

**PAR 5 SCORING**

Rank	Player	Average
1	Anna Foster	4.79
2	Megan Schofill	4.85
3	Casey Weidenfeld	4.91
4	Ami Gianchandani	4.83
5	Anna Davis	4.93
6	Katie Cranston	4.95
7	Rachel Gourley	5.00
8	Carys Worby	5.02

**TEAM AVERAGES**

Category	Average
Scoring Average	287.35
Par 3 Scoring	3.118
Par 4 Scoring	4.107
Par 5 Scoring	4.880

# Career Individual Records

## LOW 18-HOLE SCORE

Rank	Player	Tournament	Score
T1	Diana Ramage	ACC/SEC Challenge ('04)	64
T1	Ami Gianchandani	Mason Rudolph ('23)	64
T3	Katie Cranston	Moon Golf Invitational ('23)	65
T3	Anna Foster	Puerto Rico Classic ('24)	65
T3	Casey Weidenfeld	Tar Heel Invitational ('24)	65
T3	Megan Schofill	Illini Invitational ('22)	65
T3	Kelli Murphy	Pinehurst Challent ('16)	65
T3	Sophia Schubert	Alamo Invitational ('14)	65
T3	Sophia Schubert	Alamo Invitational ('14)	65
T10	Megan Schofill	Mason Rudolph ('23)	66
T10	Megan Schofill	The Ally ('21)	66
T10	Mychael O'Berry	SEC Championship ('21)	66
T10	Kaleigh Telfer	Northrop Grumman ('20)	66
T10	Julie McCarthy	Clemson Invitational ('19)	66
T10	Anika Bolcikova	Magnolia Invitational ('18)	66
T10	Clara Baena	"Mo" Morial ('14)	66

## LOW 54-HOLE SCORE

Rank	Player	Tournament	Score
1	Sophia Schubert	Alamo Invitational ('14)	204
T2	Megan Schofill	Illinii Invitational ('22)	205
T2	Megan Schofill	The Ally ('21)	205
T4	Anna Davis	SEC Champ. (2024)	206
T4	Casey Weidenfeld	Mason Rudolph ('23)	206
T4	Casey Weidenfeld	Tar Heel Inv. ('23)	206
T4	Diana Ramage	ACC/SEC Challenge ('04)	206
T8	Megan Schofill	SEC Championship ('22)	207
T8	Megan Schofill	Mason Rudolph ('22)	207
T8	Kaleigh Telfer	Northrop Grumman ('20)	207

## SCORING AVERAGE (MINIMUM 60 ROUNDS)

Rank	Player	Years	Average
1	Megan Schofill	2019-2024	72.01
2	Casey Weidenfeld	2023-present	72.64
3	Cydney Clanton	2007-2011	72.98
4	Anna Foster	2020-2024	73.01
5	Kaleigh Telfer	2017-2022	73.42
6	Celeste Troche	1999-2003	73.67
7	Elena Hualde Zúñiga	2016-2021	73.77
8	Candace Schepperle	2006-2010	73.91
9	Mychael O'Berry	2017-2022	73.92
10	Julie McCarthy	2017-2022	73.93

## TOURNAMENT WINS

Rank	Player	Count
T1	Maria Martinez	5
T1	Celeste Troche	5
T1	Robin Cook	5
T4	Kaleigh Telfer	4
T4	Diana Ramage	4
T4	Marci Clemons	4
T7	Megan Schofill	3
T7	Cydney Clanton	3
T7	Danielle Downey	3
T7	Margret Platt	3
T11	Elena Hualde Zúñiga	2
T11	Marta Sanz	2
T11	Barbara Paul	2

## ROUNDS UNDER PAR

Rank	Player	Count
1	Megan Schofill	58
2	Cydney Clanton	38
T3	Kaleigh Telfer	35
T3	Celeste Troche	35
5	Anna Foster	34
6	Mychael O'Berry	29
7	Elena Hualde Zuniga	26
T8	Nicole Hage	23
T8	Diana Ramage	23
T8	Maria Martinez	23

## TOURNAMENTS PLAYED

Rank	Player	Count
T1	Robin Cook	46
T1	Nicole Hage	46
T1	Margaret Shirley	46
T1	Courtney Swaim	46
T5	Marty Goldthorp	45
T5	Kaleigh Telfer	45
T5	Celeste Troche	45
T8	Mychael O'Berry	44
T8	Diana Ramage	44
T8	Candace Schepperle	44

**EAGLES**

Rank	Player	Count
1	Anna Foster	9
2	Cydney Clanton	8
3	Danielle Downey	7
T4	Julie McCarthy	6
T4	Elena Hualde Zúñiga	6
T4	Mychael O'Berry	6
T4	Kaleigh Telfer	6
T4	Diana Ramage	6
T9	Michaela Owen	5
T9	Victoria Trapani	5
T9	Carlie Yadloczky	5
T9	Patricia Sanz	5

**COUNTING SCORES**

Rank	Player	Count
1	Celeste Troche	130
2	Robin Cook	128
3	Nicole Hage	122
4	Cydney Clanton	121
5	Courtney Swaim	119
T6	Katie Gallina	118
T6	Candace Schepperle	118
8	Maria Martinez	117
9	Marci Clemons	115
10	Danielle Downey	114

**BIRDIES**

Rank	Player	Count
1	Megan Schofill	420
2	Cydney Clanton	394
3	Kaleigh Telfer	373
4	Nicole Hage	356
5	Candace Schepperle	339
6	Diana Ramage	333
7	Elena Hualde Zúñiga	313
8	Mychael O'Berry	303
9	Marta Sanz	301
10	Danielle Downey	295

# Season Individual Records

## SCORING AVERAGE (MINIMUM 24 ROUNDS)

Rank	Player	Season	Average
1	Cydney Clanton	2009-2010	71.45
2	Megan Schofill	2023-2024	71.65
3	Megan Schofill	2022-2023	71.67
4	Anna Davis	2023-2024	71.68
5	Maria Martinez	2005-2006	71.89
6	Candace Schepperle	2008-2009	72.00
T7	Megan Schofill	2021-2022	72.35
T7	Casey Weidenfeld	2023-2024	72.35
9	Anna Foster	2021-2022	72.36
10	Celeste Troche	2000- 2001	72.45

## ROUNDS UNDER PAR

Rank	Player	Season	Count
T1	Megan Schofill	2023-24	16
T1	Casey Weidenfeld	2023-24	16
T1	Cydney Clanton	2009-10	16
T4	Megan Schofill	2021-22	14
T4	Maria Martinez	2005-06	14
T6	Anna Foster	2021-22	13
T6	Celeste Troche	2001-02	13
8	Megan Schofill	2022-23	12
9	Celeste Troche	2002-03	12
10	Mychael O'Berry	2021-22	11

## TOURNAMENT WINS

Rank	Player	Season	Count
1	Maria Martinez	2005-06	4
T2	Diana Ramage	2004-05	3
T2	Celeste Troche	2000-01	3
T2	Danielle Downey	1999-00	3
T2	Marci Clemons	1995-96	3
T6	Elena Hualde	2016-17	2
T6	Robin Cook	1998-99	2
T6	Robin Cook	1996-97	2

## EAGLES

Rank	Player	Season	Count
1	Anna Foster	2021-22	5
T2	Mychael O'Berry	2019-20	4
T2	Cydney Clanton	2009-10	4
T4	Casey Weidenfeld	2022-23	3
T4	Megan Schofill	2021-22	3
T4	Kaleigh Telfer	2020-21	3
T4	Julie McCarthy	2018-19	3
T4	Michaela Owen	2016-17	3
T4	Diana Ramage	2004-05	3
T4	Danielle Downey	2001-02	3
T4	Courtney Swaim	2001-02	3
T4	Marci Clemons	1996-97	3

## COUNTING SCORES

Rank	Player	Season	Count
T1	Cydney Clanton	2007-08	36
T1	Maria Martinez	2005-06	36
T3	Casey Weidenfeld	2023-24	34
T3	Celeste Troche	2001-02	34
T3	Danielle Downey	1999-00	34
T3	Katie Gallina	1996-97	34
T7	Celeste Troche	2000-01	33
T7	Robin Cook	1998-99	33
T7	Courtney Swaim	1998-99	33
T7	Diana Ramage	2004-05	33
T7	Courtney Swaim	2001-02	33
T7	Celeste Troche	1999-00	33
T7	Robin Cook	1997-98	33
T7	Marty Goldthorp	1998-98	33
T7	Kami Smith	1997-98	33

## BIRDIES

Rank	Player	Season	Count
1	Cydney Clanton	2007-08	113
T2	Megan Schofill	2023-24	112
T2	Casey Weidenfeld	2023-24	112
4	Nicole Hage	2005-06	106
5	Cydney Clanton	2009-10	105
6	Anna Foster	2023-24	104
7	Candace Schepperle	2008-09	104
T8	Maria Martinez	2005-06	103
T8	Abigale Schepperle	2005-06	103
10	Cydney Clanton	2010-11	102

**PAR 3 SCORING**

Rank	Player	Season	Average
1	Megan Schofill	2023-24	3.0144
2	Michaela Owen	2015-16	3.0377
3	Megan Schofill	2022-23	3.0450
4	Anna Davis	2023-24	3.0508
5	Mychael O'Berry	2021-22	3.0536
6	Cydney Clanton	2009-10	3.0593
7	Celeste Troche	2000-01	3.0613
8	Megan Schofill	2020-21	3.0699
9	Diana Ramage	2004-05	3.0775
10	Megan Schofill	2021-22	3.0887

**PAR 4 SCORING**

Rank	Player	Season	Average
1	Anna Davis	2023-24	4.0074
2	Megan Schofill	2022-23	4.0262
3	Casey Weidenfeld	2023-24	4.0266
4	Cydney Clanton	2009-10	4.0344
5	Maria Martinez	2005-06	4.0388
6	Megan Schofill	2023-24	4.0391
7	Kaleigh Telfer	2019-20	4.0510
8	Megan Schofill	2020-21	4.0720
9	Kaleigh Telfer	2021-22	4.0864
10	C. Schepperle	2008-09	4.0875

**PAR 5 SCORING**

Rank	Player	Season	Average
1	Anna Foster	2021-22	4.6984
2	Nicole Hage	2003-04	4.7008
3	Marta Sanz	2013-14	4.7500
4	Anna Foster	2022-23	4.7500
5	Cydney Clanton	2009-10	4.7522
6	Cydney Clanton	2010-11	4.7686
7	Julie McCarthy	2018-19	4.7822
8	Anna Foster	2023-24	4.7873
9	C. Schepperle	2008-09	4.7894
10	Megan Schofill	2021-22	4.7966

**HEAD COACHING RECORDS**



**Bud Marsee**  
1985-1991



**Virginia Derby**  
1991-1994



**Kim Evans**  
1995-2015



**Melissa Luellen**  
2015-present

<b>YEARS</b>	<b>COACH</b>	<b>YRS.</b>	<b>W</b>	<b>L</b>	<b>T</b>	<b>PCT.</b>
1972-75	Mary Lou Morgan	3	Records Unavailable			
1975-81	Ron Murphy	6	74	86	0	.463
1985-91	Bud Marsee	6	527	303	1	.635
1991-94	Virginia Derby	3	184	197	3	.483
1995-2015	Kim Evans	21	2586	999	46	.721
2015-present	Melissa Luellen	9	902	464	28	.660



## ALL-AMERICANS

<b>1987</b> Margaret Platt (first-team)	<b>1999</b> Robin Cook (second-team)	<b>2006</b> Maria Martinez (first-team) Nicole Hage (honorable mention)	<b>2013</b> Marta Sanz (honorable mention)
<b>1989</b> Margaret Platt (first-team) Joal Rieder (honorable mention) Diane Rama (honorable mention)	<b>2000</b> Danielle Downey (second-team) Celeste Troche (second-team)	<b>2007</b> Nicole Hage (third-team)	<b>2015</b> Sophia Schubert (honorable mention)
<b>1990</b> Joal Rieder (honorable mention) Missy Tuck (honorable mention)	<b>2001</b> Celeste Troche (first-team)	<b>2008</b> Cydney Clanton (first-team)	<b>2019</b> Julie McCarthy (third-team)
<b>1995</b> Marci Clemons (third-team)	<b>2002</b> Courtney Swaim (first-team) Celeste Troche (first-team) Danielle Downey (second-team)	<b>2009</b> Candace Schepperle (first-team) Cydney Clanton (honorable mention)	<b>2020</b> Kaleigh Telfer (first-team) Megan Schofill (honorable mention)
<b>1996</b> Marci Clemons (second-team)	<b>2003</b> Celeste Troche (second-team) Danielle Downey (honorable mention)	<b>2010</b> Cydney Clanton (first-team) Candace Schepperle (honorable mention)	<b>2021</b> Elena Hualde Zuniga (honorable mention)
<b>1997</b> Katie Gallina (honorable mention)	<b>2004</b> Nicole Hage (second-team)	<b>2011</b> Cydney Clanton (second-team)	<b>2022</b> Megan Schofill (third-team) Anna Foster (third-team)
<b>1998</b> Robin Cook (second-team)	<b>2005</b> Diana Ramage (first-team) Maria Martinez (second-team) Nicole Hage (honorable mention)	<b>2012</b> Marta Sanz (honorable mention)	<b>2023</b> Megan Schofill (first-team)
			<b>2024</b> Anna Davis (second-team) Megan Schofill (honorable mention)





**ALL-SEC**

<b>1987</b> Margaret Platt (first-team)	<b>1999</b> Robin Cook (first-team) Courtney Swaim (second-team) Kami Smith (honorable mention)	<b>2006</b> Maria Martinez (first-team) Nicole Hage (second-team) Margaret Shirley (second-team)	Victoria Trapani (second-team, freshman team)
<b>1989</b> Margaret Platt (first-team) Diane Rama (HM)	<b>2000</b> Danielle Downey (first-team) Celeste Troche (first-team)	<b>2007</b> Nicole Hage (first-team) Candace Schepperle (second-team) Margaret Shirley (second-team)	<b>2013</b> Marta Sanz (second-team)
<b>1990</b> Joal Rieder (first-team) Missy Tuck (first-team)	<b>2001</b> Celeste Troche (first-team) Danielle Downey (second-team) Diana Ramage (second-team) Courtney Swaim (second-team)	<b>2008</b> Cydney Clanton (first-team, freshman team) Candace Schepperle (second-team) Margaret Shirley (second-team)	<b>2014</b> Marta Sanz (first-team)
<b>1993</b> Barbara Paul (first-team)	<b>2002</b> Danielle Downey (first-team) Courtney Swaim (first-team) Celeste Troche (first-team) Kingsley Barrett (second-team)	<b>2009</b> Cydney Clanton (first-team) Candace Schepperle (first-team) Haley Wilson (second-team, freshman team)	<b>2015</b> Kelli Murphy (freshman team) Sophia Schubert (freshman team)
<b>1994</b> Barbara Paul (first-team)	<b>2003</b> Danielle Downey (first-team) Diana Ramage (first-team) Celeste Troche (first-team) Maria Martinez (second-team)	<b>2010</b> Cydney Clanton (first-team) Candace Schepperle (second-team) Carlie Yadloczky (freshman team)	<b>2017</b> Elena Hualde (freshman team)
<b>1995</b> Marc Clemons (first-team) Katie Gallina (honorable mention)	<b>2004</b> Nicole Hage (first-team) Maria Martinez (first-team)	<b>2011</b> Cydney Clanton (first-team) Marta Sanz (freshman team)	<b>2019</b> Julie McCarthy (honorable mention)
<b>1996</b> Marc Clemons (first-team) Robin Cook (second-team) Katie Gallina (honorable mention)	<b>2005</b> Maria Martinez (first-team) Diana Ramage (first-team) Nicole Hage (second-team)	<b>2012</b> Patricia Sanz (first-team) Marta Sanz (second-team)	<b>2020</b> Kaleigh Telfer (first-team) Megan Schofill (first-team)
<b>1997</b> Katie Gallina (first-team) Robin Cook (first-team) Marc Clemons (second-team) Marty Goldthorp (honorable mention)			<b>2022</b> Megan Schofill (second-team) Anna Foster (second-team)
<b>1998</b> Robin Cook (first-team) Marty Goldthorp (honorable mention) Kami Smith (honorable mention)			<b>2023</b> Megan Schofill (first-team) Anna Foster (second-team) Casey Weidenfeld (freshman team)
			<b>2024</b> Anna Davis (second-team) Megan Schofill (second-team) Casey Weidenfeld (second-team)

**SEC ATHLETE OF THE YEAR**

<b>1987</b> Margaret Platt	<b>1999</b> Robin Cook	<b>2004</b> Nicole Hage	<b>2009</b> Candace Schepperle
<b>1996</b> Marc Clemons	<b>2001</b> Celeste Troche	<b>2006</b> Maria Martinez	

**SEC FRESHMAN OF THE YEAR**

<b>2000</b> Celeste Troche	<b>2002</b> Kingsley Barrett	<b>2006</b> Maria Martinez
<b>2001</b> Diana Ramage	<b>2004</b> Nicole Hage	<b>2008</b> Cydney Clanton

**WGCA ALL-AMERICAN SCHOLAR**

<b>1995</b> Marci Clemons (Accounting)	<b>2010</b> Patricia Sanz (Microbiology)	<b>2016</b> Kelli Murphy (Communications)	<b>2022</b> Megan Schofill (Communications)
<b>1998</b> Kami Smith (Accounting)	<b>2011</b> Patricia Sanz (Biomedical Science)	<b>2017</b> Chavisa Mai Dechatip (Business Analytics) Kelli Murphy (Communications)	<b>2023</b> Megan Schofill (Communications) Casey Weidenfeld (Creative Writing)
<b>1999</b> Kami Smith (Accounting)	<b>2012</b> Victoria Trapani (Pre-Business)	<b>2018</b> Kelli Murphy (Communications)	<b>2024</b> Katie Cranston (Communications) Anna Davis (Communications) Ami Gianchandani (Business Analytics) Megan Schofill (Liberal Arts) Casey Weidenfeld (Creative Writing)
<b>2000</b> Kami Smith (Accounting)	<b>2013</b> Victoria Trapani (Pre-Business)	<b>2020</b> Megan Schofill (Communications)	
<b>2001</b> Celeste Troche (International Business)	<b>2014</b> Alex Harrell (Nursing)	<b>2021</b> Megan Schofill (Communications)	
<b>2008</b> Sarah Thead (Economics)	<b>2015</b> Kelli Murphy (Pre-Communications)		
<b>2009</b> Patricia Sanz (Microbiology) Sarah Thead (Economics)			

**SEC ACADEMIC HONOR ROLL**

<b>1986</b> Johandra Culp (Physical Education)	<b>1997</b> Marci Clemons (Accounting) Katie Gallina (Early Childhood Special Education) Marty Goldthorp (Finance)	<b>2002</b> Courtney Swaim (Business) Celeste Troche (International Business)	<b>2006</b> Betsy Boyd (Marketing) Jessica Lovell (Marketing) Maria Martinez (International Business)
<b>1987</b> Meg Cimino (Liberal Arts)	<b>1998</b> Katie Gallina (Early Childhood Special Education) Marty Goldthorp (Finance) Kami Smith (Accounting)	<b>2003</b> Celeste Troche (International Business) Kingsley Barrett (Business)	<b>2007</b> Betsy Boyd (Marketing) Lauren Hawkins (Finance) Jessica Lovell (Marketing) Mariana Macias (International Business) Marisa Milligan (Health Promotion) Margaret Shirley (Communications)
<b>1988</b> Anne Jones (International Business)	<b>1999</b> Crystal Ferrier (Pre-Business) Marty Goldthorp (Finance) Kami Smith (Accounting)	<b>2004</b> Kingsley Barrett (Accounting) Meghan Ciampi (Family Studies) Jennifer Head (Sociology) Jessica Lovell (Marketing) Maria Martinez (International Business)	<b>2008</b> Karlin Beck (Pre-Business) Lauren Hawkins (Economics) Mariana Macias (International Business) Margaret Shirley (Communication)
<b>1989</b> Anne Jones (International Business)	<b>2000</b> Crystal Ferrier (Pre-Business) Audrey Fisher (Health Promotion) Kami Smith (Accounting) Kimberly Strong (Pre-Business)	<b>2005</b> Kingsley Barrett (Accounting) Meghan Ciampi (Family Studies) Jennifer Head (Sociology) Jessica Lovell (Marketing) Maria Martinez (International Business) Diana Ramage (Hotel & Restaurant Management)	<b>2009</b> Karlin Beck (Accounting) Lauren Hawkins (Finance) Mariana Macias (International Business) Sarah Thead (Economics)
<b>1990</b> Anne Jones (International Business) Missy Tuck (Liberal Arts)	<b>2001</b> Celeste Troche (International Business)		
<b>1993</b> Amy Miller (Journalism) Caren Felps (Rehabilitation & Special Services)			
<b>1995</b> Marci Clemons (Accounting) Amy Miller-Davis (Journalism)			
<b>1996</b> Marci Clemons (Accounting)			

**2010**

Karlin Beck (Accounting)  
 Madison Overbey (Marketing)  
 Patricia Sanz (Biomedical Sciences)

**2011**

Madison Overbey (Marketing)  
 Patricia Sanz (Biomedical Sciences)

**2012**

Diana Fernandez (Applied Math-Actuarial Science)  
 Madison Overbey (Marketing)  
 Patricia Sanz (Biomedical Sciences)

**2013**

Lakin Eddy (Management)  
 Diana Fernandez (Applied Math-Actuarial Science)  
 Alex Harrell (Pre-Science Education)  
 Nicole Quinn (Sociology)  
 Marta Sanz (International Business)

Victoria Trapani (Accounting)  
 Megan Wilshire (Pre-Health Administration)

**2014**

Lakin Eddy (Management)  
 Diana Fernandez (Applied Math-Actuarial Science)  
 Alex Harrell (Nursing)  
 Nicole Quinn (Social Work)  
 Marta Sanz (International Business)

Victoria Trapani (Accounting)

Megan Wilshire (Pre-Health Administration)

**2015**

Lakin Eddy (Management)  
 Alex Harrell (Nursing)  
 Kelli Murphy (Pre-Communications)  
 Nicole Quinn (Social Work)  
 Sophia Schubert (Pre-Business)  
 Victoria Trapani (Accounting)  
 Jamie Yun (Management)

**2016**

Mai Dechathipat (Pre-Business)  
 Maria Donado (Pre-Industrial Engineering)  
 Lakin Eddy (Grad: Business Administration)  
 Alex Harrell (Nursing)  
 Kelli Murphy (Communications)  
 Nicole Quinn (Social Work)  
 Victoria Traani (Accounting)  
 Jamie Yun (Management)

**2017**

Clara Baena (Journalism)  
 Chavisa Mai Dechathipat (Business Analytics)  
 Elena Hualde (Pre-Industrial Engineering)  
 Kelli Murphy (Communications)

**2018**

Kelli Murphy (Communications)

**2020**

Megan Schofill (Communications)

**2021**

Megan Schofill (Communications)

**2022**

Megan Schofill (Communications)

**2023**

Megan Schofill (Communications)  
 Casey Weidenfeld (Creative Writing)

**2024**

Katie Cranston (Communications)  
 Ashley-Sinclair Curtis (Finance)  
 Anna Foster (Environmental Design)  
 Rachel Gourley (Exercise Science)  
 Morgan Jones (Accounting)  
 Megan Schofill (Liberal Arts)  
 Casey Weidenfeld (Creative Writing)  
 Carys Worby (Supply Chain Management)

**PALMER CUP**



**Julie McCarthy**  
International- 2019



**Megan Schofill**  
United States- 2020,2023



**Kaleigh Telfer**  
International- 2020



**Anna Davis**  
United States- 2024

**AUGUSTA NATIONAL WOMEN'S AMATEUR**



**Kaleigh Telfer**  
2019, 2021



**Julie McCarthy**  
2021



**Megan Schofill**  
2021, 2022, 2023, 2024



**Mychael O'Berry**  
2022



**Anna Davis**  
2024



**Casey Weidenfeld**  
2024

**CURTIS CUP**



**Margaret Platt**  
1990



**Courtney Swaim**  
2002



**Cydney Clanton**  
2010



**Megan Schofill**  
2024



**Anna Davis**  
2024

**R&A WORLD AMATEUR**



**Celeste Trophe**  
Paraguay- 2000



**Maria Martinez**  
Venezuela- 2004



**Cydney Clanton**  
United States- 2010



**Diana Fernandez**  
Paraguay- 2010



**Marta Sanz**  
Spain- 2012, 2014



**Kaleigh Telfer**  
South Africa- 2018



**Anika Bolcikova**  
Slovakia- 2018



**Elena Hualde  
Zuniga**  
Spain- 2018



**Anna Foster**  
Ireland- 2022



**Megan Schofill**  
United States- 2023

U.S. WOMEN'S OPEN



**Virginia Derby**  
1987, 1990, 1995,  
1998, 2000



**Missy Tuck Gordon**  
1994



**Diana Ramage**  
2001



**Celeste Troche**  
2001



**Courtney Swaim**  
2002, 2004



**Nicole Hage**  
2006, 2007, 2008,  
2009



**Cydney Clanton**  
2008, 2010



**Candace Schepperle**  
2009



**Haley Wilson**  
2012



**Megan Schofill**  
2024

U.S. WOMEN'S AMATEUR (SINCE 2016)



**Chandler Rosholt**  
2019



**Brooke Sansom**  
2019



**Megan Schofill**  
2019, 2021, 2023, 2024



**Kaleigh Telfer**  
2020, 2021



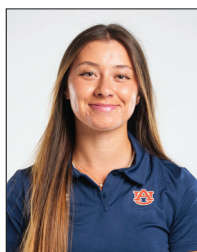
**Mychael O'Berry**  
2020



**Katie Cranston**  
2021, 2023



**Casey Weidenfeld**  
2022, 2023



**Anna Davis**  
2024

**1976-77**

<b>Event</b>	<b>Finish</b>
Lady Gator Invitational	12th
Lady Paladin Invitational	18th
Women's Southern Inter.	9th
Lady Kentucky Invitational	6th
Lady Seminole Invitational	15th
Lady Tar Heel Invitational	7th
Beacon Woods Invitational	6th

**1978-79**

Results not available

**1979-80 (72-83-0)**



<b>Event</b>	<b>Finish</b>
Duke Fall Invitational	3rd of 16
Lady Paladin Invitational	12th of 24
Women's Southern Int.	15th of 17
Lady Cats Invitational	7th of 15
Lady Seminole Invitational	14th of 17
Georgia Invitational	14th of 28
Lady Tar Heel Invitational	11th of 28
Lady Gator Invitational	15th of 18

**1980-81**



<b>Event</b>	<b>Finish</b>	<b>Score</b>
SEC Championship	4th of 6	924

**1985-86 (60-87-0)**



<b>Event</b>	<b>Finish</b>	<b>Score</b>
Lady Seminole Invitational	12th of 19	
Memphis State Int.	13th of 17	
Duke Fall Invitational	6th of 12	
Alabama-Seascape Inv.	13th of 15	
LSU-Fairwood Invitational	8th of 15	
Hudson Industries-TSU Inv.	9th of 21	
Lady Paladin Invitational	11th of 14	
Peggy Kirk Bell Invitational	3rd of 15	
Canceled Classic	4th of 7	
Women's Southern Int.	13th of 16	
SEC Championship	6th of 7	961

**1986-87 (57-58-0)**



<b>Event</b>	<b>Finish</b>	<b>Score</b>
SEC Championship	4th of 6	924

**1987-88 (98-37-1)**



<b>Event</b>	<b>Finish</b>	<b>Score</b>
Lady Seminole Invitational	17th of 19	952
Lady Tar Heel Invitational	7th of 18	956
Tiger-Tide Invitational	4th of 16	947
U.S. International Invitational	3rd of 11	941
Lady Gator Invitational	7th of 12	
Hudson Industries Invitational	1st of 14	
LSU-Fairwood Invitational	5th of 15	
Illinois Spring Classic	2nd of 9	
Lady Paladin Invitational	5th of 8	
Women's Southern Int.	3rd of 16	
SEC Championship	4th of 9	892

**1988-89 (117-38-0)**



<b>Event</b>	<b>Finish</b>	<b>Score</b>
Dick McGuire Invitational	10th of 17	
Lady Kat Invitational	2nd of 19	
Tiger-Tide Invitational	3rd of 13	
Lady Gator Invitational	5th of 12	
Hudson Industries Inv.	2nd of 18	
LSU-Fairwood Invitational	3rd of 14	
Duke Spring Invitational	5th of 19	
Lady Sun Devil Invitational	4th of 17	
Women's Southern Int.	1st of 11	
SEC Championship	1st of 9	902

**SEC Champions**

**1989-90 (120-27-0)**



<b>Event</b>	<b>Finish</b>	<b>Score</b>
Dick McGuire Invitational	3rd of 18	
Lady Kat Invitational	1st of 17	
Tiger-Tide Invitational	2nd of 20	
Yamaha Holiday Classic	4th of 11	
Lady Gator Invitational	3rd of 12	
Country Club of Alabama	1st of 9	
LSU-Fairwood Invitational	3rd of 14	
Lady Sun Devil Invitational	8th of 18	
Women's Southern Int.	3rd of 13	
SEC Championship	2nd of 9	613
NCAA Championship	8th of 17	306-307-318-298-1229

**1990-91 (75-56-0)**



<b>Event</b>	<b>Finish</b>	<b>Score</b>
Lady Buckeye Invitational	14th of 19	
PING/Tulsa Intercollegiate	7th of 19	
Tiger-Tide Invitational	6th of 19	
Golf World Collegiate	7th of 12	
Lady Gator Invitational	11th of 12	
Country Club of Alabama	2nd of 8	
South Carolina Invitational	5th of 13	
Lady Sun Devil Invitational	6th of 17	
Women's Southern Int.	2nd of 13	
SEC Championship	6th of 9	952

**1991-92 (45-63-0)**



<b>Event</b>	<b>Finish</b>	<b>Score</b>
Arizona State Fall Preview	17th of 18	
Lady Paladin Invitational	7th of 9	
Tiger-Tide Invitational	7th of 15	
Lady Gator Invitational	6th of 12	
Country Club of Alabama	3rd of 10	
LSU-Fairwood Invitational	7th of 16	
UNC-Woodbridge Tour.	9th of 10	
Women's Southern Int.	8th of 17	
SEC Championship	8th of 10	943

**1992-93 (46-86-3)**



<b>Event</b>	<b>Finish</b>	<b>Score</b>
Lady Paladin Invitational	6th of 9	980
Tiger-Tide Invitational	4th of 18	937
Carolyn Cudone Collegiate	11th of 15	1010
Lady Gator Invitational	8th of 12	985
Josten's Invitational	12th of 17	986
LSU-Fairwood Invitational	16th of 17	660
Woodbridge Invitational	T8th of 9	964
Women's Southern Int.	T12th of 19	996
SEC Championship	7th of 11	632
NCAA East Regional	T12th of 18	316-315-312-943



**1993-94 (93-48-1)**



<b>Event</b>	<b>Finish</b>	<b>Score</b>
Lady Paladin Invitational	7th of 14	953
Tiger-Tide Invitational	14th of 20	667
Carolyn Cudone Collegiate	3rd of 16	932
Lady Gator Invitational	6th of 12	941
LSU-Fairwood Invitational	T6th of 18	950
Lexel Golf	4th of 21	944
Women's Southern Int.	5th of 20	950
SEC Championship	3rd of 11	901
NCAA East Regional	9th of 19	331-311-315-957

**1994-95 (66-56-1)**



<b>Event</b>	<b>Finish</b>	<b>Score</b>
Auburn Tiger Invitational	1st of 12	299-317-616
Lady Tar Heel Invitational	8th of 15	306-302-294-902
Lady Paladin Invitational	6th of 23	307-305-303-915
Carolyn Cudone Collegiate	8th of 12	320-324-325-969
Lady Gator Invitational	10th of 12	955
LSU-Fairwood Invitational	6th of 15	951
Duke Spring Invitational	10th of 17	974
Liz Murphey Collegiate	11th of 15	966
SEC Championship	T6th of 11	950

**1995-96 (119-53-3)**



<b>Event</b>	<b>Finish</b>	<b>Score</b>
Auburn Tiger Invitational	3rd of 12	299-317-616
Lady Tar Heel Invitational	T5th of 18	306-302-294-902
Lady Paladin Invitational	3rd of 23	307-305-303-915
Carolyn Cudone Collegiate	13th of 15	320-324-325-969
Lady Gator Invitational	3rd of 13	310-308-282-900
LSU-Fairwood Invitational	3rd of 18	301-312-293-906
Duke Spring Invitational	6th of 15	333-316-322-971
Liz Murphey Collegiate	3rd of 22	305-311-306-922
SEC Championship	1st of 12	289-306-604
NCAA East Regional	T5th of 19	300-309-310-919
NCAA Championship	18th of 18	327-330-332-320-1309

**SEC Champions**

**1996-97 (143-36-0)**



<b>Event</b>	<b>Finish</b>	<b>Score</b>
Lady Seminole Invitational	4th of 19	316-305-307-928
Auburn Tiger Invitational	2nd of 12	297-300-597
Lady Rebel Intercollegiate	1st of 15	303-303-606
Lady Paladin Invitational	4th of 21	307-307-299-913
Pepperdine Invitational	2nd of 9	317-306-623
SunTrust Lady Gator Inv.	4th of 15	316-306-295-917
Fripp Island/Hogan Int.	3rd of 17	314-300-312-926
Lady Gamecock Classic	5th of 15	304-299-299-902
Liz Murphey Collegiate	2nd of 19	302-302-308-912
SEC Championship	5th of 12	312-299-300-911
NCAA East Regional	3rd of 19	316-323-306-945
NCAA Championship	13th of 18	303-319-296-303-1221

1997-98 (98-66-6)



Event	Finish	Score
Auburn Tiger Invitational	5th of 12	298-307-299-904
Mercedes-Benz Collegiate	T12th of 18	323-312-311-946
Lady Paladin Invitational	T4th of 21	292-302-308-902
Memphis Women's Int.	3rd of 15	319-314-312-945
SunTrust Lady Gator Inv.	7th of 19	304-302-306-912
Fripp Island/Hogan Int.	3rd of 17	314-314-318-946
Bryan National Collegiate	10th of 15	311-308-320-939
Liz Murphey Collegiate	T5th of 17	312-303-315-930
SEC Championship	5th of 12	309-305-311-925
NCAA East Regional	T7th of 19	309-299-308-916
NCAA Championship	19th of 19	295-314-309-313-1231

1998-99 (121-72-0)



Event	Finish	Score
Lady Seminole Invitational	3rd of 20	294-294-298-886
Auburn Tiger Invitational	6th of 12	299-300-599
Mercedes-Benz Collegiate	4th of 16	307-303-304-914
Lady Paladin Invitational	2nd of 18	308-308-292-908
OSU-SMU Regional Chall.	10th of 18	309-307-312-928
Lady Gator Invitational	5th of 19	301-317-618
LSU/Fairwood Invitational	4th of 18	320-312-632
Thompson Rainbow Wahine	9th of 15	307-316-304-927
Liz Murphey Collegiate	8th of 18	314-302-314-930
SEC Championship	6th of 12	310-310-317-949
NCAA East Regional	8th of 19	306-298-308-912
NCAA Championship	T15th of 19	318-312-314-944

1999-00 (135-47-1)



Event	Finish	Score
NCAA Fall Preview	18th of 21	314-309-315-938
Auburn Tiger-Derby Inv.	2nd of 13	305-289-310-904
Tar Heel Invitational	3rd of 15	311-305-305-921
Mercedes-Benz Collegiate	7th of 18	307-299-316-922
Lady Paladin Invitational	3rd of 24	306-309-294-909
Lady Gator Invitational	4th of 15	300-309-312-921
Casa de Campo Invitational	2nd of 11	304-313-310-927
Liz Murphey Collegiate	5th of 17	299-302-308-909
SEC Championship	1st of 12	306-306-307-919
NCAA East Regional	T7th of 24	301-298-308-907
NCAA Championship	6th of 24	302-302-300-306-1210

SEC Champions

2000-01 (160-15-1)



Event	Finish	Score
Auburn Tiger-Derby Inv.	1st of 12	297-293-304-894
NCAA Fall Preview	6th of 21	300-307-607
ACC/SEC Shootout	1st of 12	305-294-309-908
Lady Paladin Invitational	1st of 22	291-290-296-877
GolfWorld Invitational	1st of 12	291-291-291-873
Lady Gator Invitational	1st of 17	292-290-286-868
Liz Murphey Collegiate	3rd of 18	315-305-306-926
LSU/Cleveland Classic	2nd of 11	293-289-290-872
SEC Championship	3rd of 12	294-300-293-887
NCAA East Regional	2nd of 21	294-290-295-879
NCAA Championship	4th of 24	300-294-294-305-1193

**2001-02 (162-7-3)**



<b>Event</b>	<b>Finish</b>	<b>Score</b>
Topy Cup/U.S.-Japan Coll.	1st of 5	286-299-294-879
NCAA Fall Preview	T1st of 24	300-291-591
Mercedes-Benz Collegiate	2nd of 14	299-298-310-907
Lady Paladin Invitational	1st of 21	299-300-294-893
Auburn Tiger-Derby Inv.	2nd of 12	308-288-294-890
Arizona Wildcat Invitational	2nd of 18	297-296-290-883
AU One-Day Invitational	1st of 2	298-298
Liz Murphey Collegiate	2nd of 18	303-287-290-880
LSU/Cleveland Classic	1st of 13	290-289-304-883
SEC Championship	2nd of 12	280-291-293-864
NCAA East Regional	2nd of 21	287-293-292-872
NCAA Championship	2nd of 24	298-300-285-287-1170

**2002-03 (130-39-3)**



<b>Event</b>	<b>Finish</b>	<b>Score</b>
NCAA Fall Preview	5th of 18	301-299-304-904
SEC/ACC Challenge	1st of 12	294-297-296-887
Mercedes-Benz Collegiate	1st of 15	303-304-292-899
Derby Invitational	T4th of 13	291-297-295-883
Lady Puerto Rico Classic	10th of 15	305-293-315-913
Lady Gamecock Classic	T4th of 15	--302
Bryan National Collegiate	T6th of 18	298-303-601
Liz Murphey Collegiate	5th of 17	298-301-293-892
SEC Championship	1st of 12	299-297-307-903
NCAA East Regional	4th of 21	298-291-278-867
NCAA Championship	9th of 24	317-303-300-304-1224

**2003-04 (104-40-4)**



<b>Event</b>	<b>Finish</b>	<b>Score</b>
NCAA Fall Preview	T1st of 18	286-297-287-870
Mason Rudolph Champ.	7th of 17	294-291-309-894
Franklin Street Partners Inv.	T3rd of 9	301-303-302-906
SEC/ACC Challenge	3rd of 11	289-287-586
Lady Puerto Rico Classic	7th of 15	310-297-306-913
Lady Gator Invitational	7th of 15	307-314-298-919
Lady Gators at Howey	3rd of 4	312-312
Liz Murphey Collegiate	5th of 18	293-295-296-884
Bryan National Collegiate	5th of 18	294-289-308-891
SEC Championship	T2nd of 12	292-295-294-881

**2004-05 (163-19-1)**



<b>Event</b>	<b>Finish</b>	<b>Score</b>
NCAA Fall Preview	5th of 21	295-296-278-869
Franklin Street Partners Inv.	2nd of 98	295-290-289-874
Lady Paladin Invitational	3rd of 23	291-303-291-885
ACC/SEC Challenge	2nd of 16	292-271-294-857
Lady Puerto Rico Classic	1st of 14	299-297-292-888
Lady Gator Invite	2nd of 18	304-293-305-902
Liz Murphey Collegiate	T3rd of 19	304-297-307-908
Bryan National Collegiate	7th of 17	301-300-319-920
SEC Championship	1st of 12	291-302-311-904
NCAA Central Regional	1st of 21	294-309-293-896
NCAA Championship	3rd of 24	290-296-295-295-1176

**2005-06 (163-29-0)**



<b>Event</b>	<b>Finish</b>	<b>Score</b>
Cougar Classic	4th of 17	307-285-292-884
Mason Rudolph Champ.	5th of 15	291-298-300-889
Lady Tar Heel Invitational	2nd of 18	300-286-296-882
Derby Invitational	1st of 17	291-302-286-879
Wildcat Invitational	5th of 18	288-287-289-864
LSU Cleveland Golf Classic	1st of 18	297-289-287-873
Lady Gamecock Classic	1st of 11	304-278-297-879
Liz Murphey Classic	2nd of 18	308-304-293-905
SEC Championship	1st of 12	300-282-293-875
Lady Buckeye Invitational	1st of 15	288-280-281-849
NCAA East Regional	6th of 21	293-301-285-879
NCAA Championship	12th of 24	301-298-305-304-1208

**2006-07 (157-42-0)**



<b>Event</b>	<b>Finish</b>	<b>Score</b>
Fall Preview	4th of 17	298-290-300-888
Lady Tar Heel Invitational	8th of 17	313-309-292-914
UT Mercedes Invitational	3rd of 15	287-301-301-889
Derby Invitational	1st of 17	303-291-594
Hooters Collegiate Match	5th of 16	match play
Lady Puerto Rico Classic	1st of 16	292-284-297-873
LSU/Cleveland Classic	3rd of 21	299-290-290-879
Liz Murphey Collegiate	1st of 18	293-299-289-881
Bryan National Collegiate	7th of 18	301-315-300-916
SEC Championship	8th of 12	298-302-302-902
NCAA East Regional	4th of 21	293-282-286-861
NCAA Championship	9th of 24	309-304-300-300-1213

**2007-08 (139-56-7)**



<b>Event</b>	<b>Finish</b>	<b>Score</b>
Mason Rudolph Championship	T6th of 19	288-301-288-877
Fall Preview	T6th of 18	298-299-288-885
Lady Tar Heel Invitational	T3rd of 18	301-293-291-885
Mercedes-Benz Collegiate	4th of 17	292-296-291-879
UA-Ann Rhoads Inter	2nd of 18	301-300-293-894
Hooters Collegiate Match	T7th of 16	match play
Wildcat Invitational	T9th of 16	292-314-311-917
UCF Challenge	8th of 18	292-291-293-876
Liz Murphey Collegiate	7th of 18	303-311-308-922
Bryan National Collegiate	3rd of 18	301-303-305-909
SEC Championship	4th of 12	310-309-291-910
NCAA East Regional	4th of 21	296-302-296-894
NCAA Championship	T12 of 24	289-315-309-302-1215

**2008-09 (132-39-1)**



<b>Event</b>	<b>Finish</b>	<b>Score</b>
NCAA Fall Preview	7th of 15	294-302-290-886
Mason Rudolph Champ.	9th of 17	298-306-287-891
Lady Tar Heel Invitational	5th of 18	308-296-297-901
Derby Invitational	4th of 17	298-304-294-896
Hooters Collegiate Match	6th of 16	294-291-585
Central District Invitational	1st of 15	284-295-303-882
Central Florida Challenge	5th of 18	290-294-290-874
Liz Murphey Collegiate	1st of 18	299-299
SunTrust Lady Gator Inv.	1st of 16	306-305-302-913
SEC Championship	1st of 12	289-296-285-870
NCAA East Regional	10th of 21	304-294-295-893

**SEC Champions**

2009-10 (153-43-5)



Event	Finish	Score
Hooters Collegiate Qual.	T3rd of 16	294-296-590
Hooters Collegiate Match	2nd of 16	match play
Mason Rudolph Champ.	3rd of 17	278-285-563
Lady Tar Heel Invitational	2nd of 18	296-286-290-872
NCAA Fall Preview	T2nd of 18	299-295-288-882
Arizona Wildcat Invitational	8th of 16	308-297-605
Auburn Invitational	1st of 4	294-294
Tiger/Wave Golf Classic	1st of 23	305-296-288-889
Liz Murphey Collegiate	T4th of 23	310-299-306-915
Bryan National Collegiate	12th of 18	303-297-300-900
SEC Championship	5th of 12	289-288-284-861
NCAA East Regional	T3rd of 24	280-295-293-868
NCAA Championship	T11th of 24	293-296-295-299-1183

2010-11 (95-78-2)



Event	Finish	Score
NCAA Fall Preview	12th of 18	296-297-302-895
Mason Rudolph Champ.	12th of 17	294-288-294-876
Tar Heel Invitational	T13th of 18	293-288-299-880
Pac-10/SEC Challenge	5th of 21	286-289-304-879
Puerto Rico Invitational	11th of 18	313-310-300-923
Allstate Sugar Bowl Int.	10th of 17	302-298-288-888
Battle at Rancho Bernardo	5th of 17	305-307-293-905
Liz Murphey Collegiate	T6th of 23	294-297-280-871
SEC Championship	1st of 12	283-290-291-864
NCAA Regional	13th of 24	302-299-302-903

2011-12 (95-78-2)



Event	Finish	Score
The "Mo" Morial	2nd of 11	296-302-289-887
Lady Tar Heel Invitational	3rd of 18	287-290-284-861
Pac-10/SEC Challenge	3rd of 23	296-286-297-879
The Landfall Tradition	2nd of 18	297-312-309-918
Central Florida Challenge	1st of 18	285-284-294-863
Allstate Sugar Bowl Int.	T8th of 15	300-300-297-897
Women's Gator Invitational	T6th of 17	293-300-292-885
Liz Murphey Collegiate	7th of 18	297-292-290-879
SEC Championship	1st of 12	306-297-313-916
NCAA Regional	12th of 24	306-304-312-922

SEC Champions

2012-13 (95-78-2)



Event	Finish	Score
Cougar Classic	6th of 24	288-288-294-870
Liz Murphey Fall Preview	T3rd of 18	287-293-303-883
Tar Heel Invitational	14th of 18	311-308-302-921
Betsy Rawls Longhorn Inv.	12th of 15	299-298-306-903
Lady Puerto Rico Classic	11th of 15	306-306-304-916
Allstate Sugar Bowl Int.	18th of 18	302-315-617
Darius Rucker Invitational	15th of 15	315-316-307-938
Bryan National Collegiate	T9th of 17	298-297-299-894
SEC Championship	10th of 14	321-306-306-933
NCAA East Regional	8th of 24	299-284-294-877
NCAA Championship	6th of 24	305-292-285-301-1183

**2013-14 (88-73-2)**



<b>Event</b>	<b>Finish</b>	<b>Score</b>
Cougar Classic	8th of 20	295-295-291--881
Mason Rudolph Champ.	7th of 15	290-301-294--885
Tar Heel Invitational	10th of 18	291-299-296--886
Stanford Intercollegiate	11th of 16	294-295-295--884
Lady Puerto Rico Classic	4th of 15	298-298-295--891
Allstate Sugar Bowl Int.	9th of 17	296-291-286--873
Darius Rucker Invitational	T10th of 17	305-301-293--899
Liz Murphey Collegiate	5th of 16	299
SEC Championship	6th of 14	296-298-306--900
NCAA East Regional	15th of 24	293-301-293--887

**2014-15 (64-76-2)**



<b>Event</b>	<b>Finish</b>	<b>Score</b>
The "Mo" Morial	1st of 11	291-287-282=860
Mason Rudolph Champ.	T4th of 14	298-292-295=885
Tar Heel Invitational	12th of 18	298-299-303=900
Alamo Invitational	3rd of 15	275-295-280=850
Lady Puerto Rico Classic	10th of 15	302-301-300=903
Darius Rucker Int.	T14th of 17	298-307-303=908
Liz Murphey Collegiate	12th of 12	323 (+35)
Bryan National Collegiate	9th of 18	299-305-307=911
SEC Championship	9th of 14	307-295-290=892
NCAA San Antonio Regional	12th of 18	291-293-292=876

**2015-16 (40-104-1)**



<b>Event</b>	<b>Finish</b>	<b>Score</b>
Cougar Classic	T-9th of 20	298-292-304=894
Mason Rudolph Champ.	8th of 17	287-288-305=880
Tar Heel Invitational	12th of 18	298-304-303=905
Stanford Intercollegiate	17th of 17	303-314-300=917
Lady Puerto Rico Classic	12th of 16	305-310-299=914
Darius Rucker Intercollegiate	13th of 17	296-289-316=901
LSU Tiger Golf Classic	14th of 17	326-312-313=951
Liz Murphey Collegiate	11th of 12	303 (+15)
SEC Championship	13th of 14	304-311-304=919

**2016-17 (89-69-8)**



<b>Event</b>	<b>Finish</b>	<b>Score</b>
Fall Kickoff	2nd of 7	298-293=591 (+15)
Mason Rudolph Champ.	T5th of 15	289-298-292=879
Cougar Classic	T7th of 21	284-292-293=869
Pinehurst Challenge	2nd of 18	288-294-286=868
Maryb S. Kauth Invitational	T7th of 14	291-284-298=873
UCF Challenge	7th of 17	284-292-288=864
Auburn-Tennessee Challenge	1st of 2	292-302=594
Darius Rucker Intercollegiate	14th of 17	299-301-311=911
Briar's Creek Invitational	5th of 18	288-291-292=871
Liz Murphey Collegiate	T-5th of 12	310
SEC Championship	14th of 14	300-297-297=894
NCAA Athens Regional	12th of 18	305-298-297=900

**2017-18 (97-54-10)**



<b>Event</b>	<b>Finish</b>	<b>Score</b>
Mason Rudolph Champ.	T5th of 15	285-284-288=857
Magnolia Invitational	T4 of 10	291-294-292=877
Maryb S. Kauth Invitational	9th of 14	301-286-296=883
Battle at the Beach	T5 of 14	288-292-290=870
UCF Challenge	3rd of 16	299-293-286=878
Lake Oconee Individual Champinoship		
Darius Rucker Intercollegiate	T7 of 18	304-303-291=898
Evans Derby Experience	4th of 12	285-290-288=863
Bryan National Collegiate	T3 of 17	295-294-308=897
SEC Championship	T5 of 14	306-301-289=896
NCAA Regional	T3 of 18	292-291-286=869
NCAA Champinoship	T15 of 24	304-306-293=903

**2018-19 (130-44-3)**



<b>Event</b>	<b>Finish</b>	<b>Score</b>
Mason Rudolph Champ.	T4 of 15	284-299=583
Magnolia Invitational	6th of 14	295-287=582
Alexa Stirling Intercollegiate	2nd of 11	294-299-290=883
Battle at the Beach	1st of 17	287-278-280=845
Shootout at Shoal Creek	1st of 4	285
Lake Oconee Invitational		
Allstate Sugar Bowl Int.	7th of 18	298-303-299=900
Darius Rucker Intercollegiate	T5 of 18	294-292-296=882
Evans Derby Experience	7th of 14	290-303-296=889
Clemson Invitational	2nd of 18	278-285=563
SEC Championship	T5 of 14	284-298-300=882
NCAA Auburn Regional	5th of 18	299-290-285=874
NCAA Champoinship	8th of 24	313-295-307=915

**2019-20 (62-27-0)**

<b>Event</b>	<b>Finish</b>	<b>Score</b>
Couger Classic	10th of 17	288-296-286=870
Mason Rudolph Champ.	4th of 15	294-287-290=871
Magnolia Invitational	3rd of 11	290-287-287=864
East Lake Cup	4th of 4	295
Northop Grunman Challenge	9th of 16	283-298-291=872
Luke Oconee Invitational	1st of 14	293-284-279=856
Darius Rucker Intercollegiate	2nd of 17	294-298-289=881

\*REMAINDER OF SEASON CANCELLED DUE TO COVID-19\*

**2020-21 (117-39-2)**



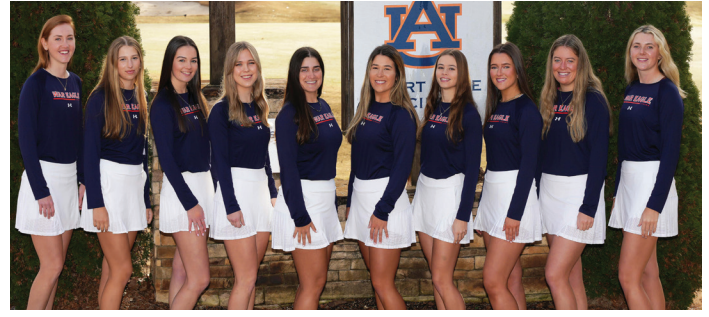
<b>Event</b>	<b>Finish</b>	<b>Score</b>
Blessings Collegiate Inv.	7th of 14	300-300-304=904
The Ally at Old Waverly	3rd of 15	283-294-284=861
Liz Murphy Fall Collegiate	1st of 12	293-281-290=864
Moon Golf Invitational	5th of 18	289-286-287=862
Gamecock Intercollegiate	5th of 18	287-291-301=879
Liz Murphy Collegiate Classic	8th of 18	295-310-300=905
LSU Tiger Golf Classic	T6th of 14	295-296-297=888
SEC Championship	3rd of 14	279-278-282=839
NCAA Louisville Regional	T4th of 18	296-296-286=878
NCAA Championship	6th of 24	305-299-288-278=1170

**2021-22 (98-41-2)**



<b>Event</b>	<b>Finish</b>	<b>Score</b>
Cougar Classic		
Mason Rudolph Champ.	5th of 15	294-284-284=862
Barbara Nicklaus Cup	4th of 4	7 points
The Ally at Old Waverly	3rd of 12	290-284-279=853
Lady Bulldog Invitational		
UCF Challenge	5th of 18	279-278-291=848
Moon Golf Invitational	T7 of 15	295-287-289=871
Darius Rucker Intercollegiate	6th of 17	298-285-292=875
Northrop Grumman Chall.	10th of 16	297-295-294=886
Auburn Individual		
SEC Championship	1st of 14	288-288-288=864
NCAA Stillwater Regional	T3rd of 12	313-292-276=881
NCAA Championship	5th of 24	296-290-299-290=1175

**2022-23 (91-32-0)**



<b>Event</b>	<b>Finish</b>	<b>Score</b>
ANNIKA Intercollegiate	10th of 12	303-290-290=883
Mason Rudolph Champ.	5th of 14	291-287-288=866
Illini Women's Invitational	2nd of 15	283-274-278=835
East Lake Cup (Stoke Play)	3rd of 4	294
Nexus Collegiate	4th of 10	288-302-300
Moon Golf Invitational	4th of 17	281-278-290=849
Darius Rucker Int.	3rd of 17	285-292-289=866
Liz Murphey Collegiate	1st of 15	277-286=563
SEC Championship	2nd of 14	294-295-292=881
NCAA San Antonio Regional	6th of 12	304-290-299=893

**2023-24 (154-40-2)**



<b>Event</b>	<b>Finish</b>	<b>Score</b>
Mason Rudolph Champ.	2nd of 18	274-282-287=843
Windy City Classic	T10th of 15	290-282-292=864
Tar Heel Invitational	2nd of 14	291-284-281=856
Stanford Intercollegiate	T12 of 19	293-290-291=874
Lady Bulldog Individual		
Lady Puerto Rico Classic	3rd of 15	292-287-277=856
Moon Golf Invitational	2nd of 17	282-291-293=866
Darius Rucker Inter.	3rd of 17	284-282-291=857
Valspar Invitational	4th of 17	
Liz Murphey Collegiate	1st of 17	290-283-292=865
SEC Championship	2nd of 14	279-283-278=840
NCAA Auburn Regional	1st of 12	290-287-297=874
NCAA Championship	8th of 30	285-290-301-296=1172



Year	Coach	Record	SEC Champ	Regional	NCAAs	Final Golfweek Ranking
1976-77	Ron Murphy	N/A	N/A			
1978-79	Ron Murphy	N/A	N/A			
1979-80	Ron Murphy	72-83-0	N/A			
1985-86	Bud Marsee	60-87-0	6th of 7			
1986-87	Bud Marsee	57-58-0	4th of 8			
1987-88	Bud Marsee	98-37-1	4th of 9			
1988-89	Bud Marsee	117-38-0	1st of 9			
1989-90	Bud Marsee	120-27-0	2nd of 9		8th of 17	
1990-91	Bud Marsee	75-56-0	6th of 9			
1991-92	Virginia Derby	45-63-0	8th of 10			
1992-93	Virginia Derby	46-86-3	7th of 11	T12 of 18		
1993-94	Virginia Derby	93-48-1	3rd of 11	9th of 19		
1994-95	Kim Evans	66-56-1	T6th of 11			
1995-96	Kim Evans	119-53-3	1st of 12	T5th of 19	18th of 18	
1996-97	Kim Evans	143-36-0	5th of 12	3rd of 19	13th of 18	
1997-98	Kim Evans	98-66-6	5th of 12	T7th of 19	19th of 19	
1998-99	Kim Evans	121-72-0	6th of 12	8th of 19	T15th of 19	
1999-00	Kim Evans	135-47-1	1st of 12	T7th of 24	6th of 24	11th
2000-01	Kim Evans	160-15-1	3rd of 12	2nd of 21	4th of 24	4th
2001-02	Kim Evans	162-7-3	2nd of 12	2nd of 21	2nd of 24	1st
2002-03	Kim Evans	130-39-3	1st of 12	4th of 21	9th of 24	7th
2003-04	Kim Evans	104-40-4	T2nd of 12			11th
2004-05	Kim Evans	163-19-1	1st of 12	1st of 21	3rd of 24	3rd
2005-06	Kim Evans	163-29-0	1st of 12	6th of 21	12th of 24	5th
2006-07	Kim Evans	157-42-0	8th of 12	4th of 21	9th of 24	8th
2007-08	Kim Evans	139-56-7	4th of 12	4th of 21	T12th of 24	11th
2008-09	Kim Evans	132-39-1	1st of 12	10th of 21		8th
2009-10	Kim Evans	153-43-5	5th of 12	T3rd of 24	T11th of 24	6th
2010-11	Kim Evans	95-78-2	1st of 12	13th of 24		15th
2011-12	Kim Evans	95-78-2	1st of 12	12th of 24		7th
2012-13	Kim Evans	95-78-2	10th of 14	8th of 24	6th of 24	34th
2013-14	Kim Evans	88-73-2	6th of 14	15th of 24		28th
2014-15	Kim Evans	64-76-2	9th of 14	12th of 18		29th
2015-16	Kim Evans	40-104-1	13th of 14			66th
2016-17	Melissa Luellen	89-69-8	14th of 14	12th of 18		43rd
2017-18	Melissa Luellen	97-54-10	T5th of 14	T3rd of 18	T15th of 24	23rd
2018-19	Melissa Luellen	130-44-3	Semifinals	5th of 18	Semifinals	12th
2019-20	Melissa Luellen	62-27-0	Cancelled	Cancelled	Cancelled	14th
2020-21	Melissa Luellen	117-39-2	Champion	T4th of 18	Quarterfinals	12th
2021-22	Melissa Luellen	98-41-2	Semifinals	T3rd of 12	Semifinals	14th
2022-23	Melissa Luellen	91-32-0	Quarterfinals	6th of 12		19th
2023-24	Melissa Luellen	154-40-2	Quarterfinals	1st of 12	Quarterfinals	

**ALL TIME****4243-2328-79**

SEC CHAMPIONSHIP VICTORIES



1989



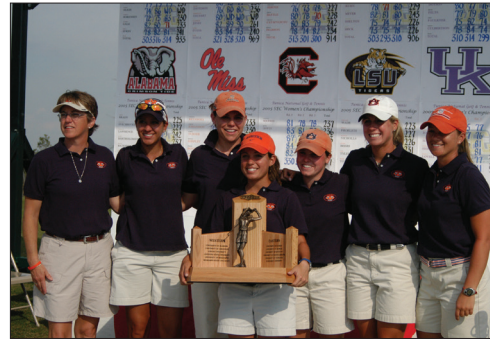
1996



2000



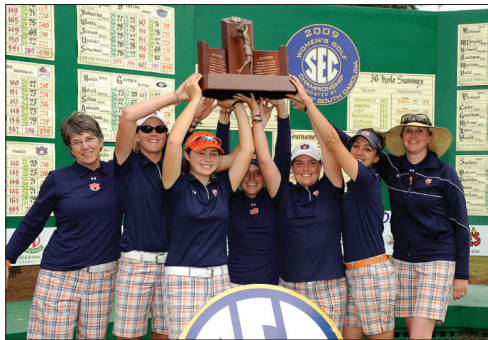
2003



2005



2006



2009



2011



2012



2021

**SEC CHAMPIONSHIP STROKE PLAY WINNING RESULTS**

**1989 • Ponte Vedra, Fla.  
Marsh Landing Golf Course**

1. Auburn.....	902
Diane Rama.....	223 (1st)
Margaret Platt.....	228 (7th)
Joal Rieder.....	229 (t-8th)
Diana Miles.....	229 (t-8th)
Missy Tuck.....	234 (t-16th)

**1996 • Knoxville, Tenn.  
Host: Tennessee**

1. Auburn.....	604
Marci Clemons.....	144 (1st)
Katie Gallina.....	152 (7th)
Robin Cook.....	153 (t-8th)
Marty Goldthorp.....	155 (t-17th)
Tracy Veto.....	164 (t-45th)

**2000 • Rogers, Ark.  
Pinnacle Country Club  
Host: Arkansas**

1. Auburn.....	919
Danielle Downey.....	224 (1st)
Celeste Troche.....	226 (t-2nd)
Kami Smith.....	234 (t-17th)
Kimberly Strong.....	236 (t-23rd)
Courtney Swaim.....	240 (t-31st)

**2003 • Lexington, Ky.  
University Club of Kentucky  
Host: Kentucky**

1. Auburn.....	299-297-307--903
Danielle Downey.....	74-74-75--223 (t-5th)
Maria Martinez.....	76-72-76--224 (t-8th)
Celeste Troche.....	75-74-76--225 (t-10th)
Diana Ramage.....	74-77-83--234 (t-22nd)
Kingsley Barrett.....	78-78-80--236 (t-27th)

**2005 • Tunica, Miss.  
Tunica National Golf & Tennis Club  
Host: Ole Miss**

*T1. Auburn.....	291-302-311--904
Nicole Hage.....	69-76-81--226 (t-7th)
Maria Martinez.....	74-75-77--226 (t-7th)
Diana Ramage.....	75-77-76--228 (t-15th)
Margaret Shirley.....	73-74-81--228 (t-15th)
Jessica Lovell.....	76-80-77--233 (t-30th)

\* Auburn won in a three-hole playoff

**2006 • Nashville, Tenn.  
Vanderbilt Legends Club  
Host: Vanderbilt**

1. Auburn.....	300-282-293--875
Maria Martinez.....	73-68-70--211 (1st)
Margaret Shirley.....	77-69-71--217 (3rd)
Jessica Lovell.....	76-71-76--223 (t-16th)
Abigale Schepperle.....	74-78-76--228 (t-30th)
Nicole Hage.....	78-74-77--229 (34th)

**2009 • Blythewood, S.C.  
University Club at Cobblestone Park  
Host: South Carolina**

1. Auburn.....	289-296-285--870
Cydney Clanton.....	71-75-70--216 (t-4th)
Patricia Sanz.....	77-69-71--217 (t-6th)
Candace Schepperle.....	71-74-73--218 (t-10th)
Haley Wilson.....	70-78-71--219 (12th)
Mariana Macias.....	82-79-89--240 (t-54th)

**2011 • Auburn, Ala.  
Auburn University Club  
Host: Auburn**

1. Auburn.....	283-290-291--864
Cydney Clanton.....	69-72-73--214 (3rd)
Haley Wilson.....	71-77-72--220 (11th)
Patricia Sanz.....	80-67-75--222 (t-14th)
Marta Sanz.....	73-78-71--222 (t-14th)
Charlie Yadloczky.....	70-74-81--225 (t-19th)

**2012 • Fayetteville, Ark.  
Blessings Golf Club  
Host: Arkansas**

1. Auburn.....	306-297-313--916
Patricia Sanz.....	69-73-77--219 (1st)
Victoria Trapani.....	77-78-74--229 (t-8th)
Charlie Yadloczky.....	77-73-82--232 (t-17th)
Haley Wilson.....	86-73-81--240 (t-36th)
Marta Sanz.....	83-78-81--242 (t-39th)

**2021 • Birmingham, Ala.  
Greystone G&CC - Legacy  
Host: N/A**

1. Auburn.....	279-278-282--839
Kaleigh Telfer.....	69-72-68--209 (t-13th)
Elena Hualde Zúñiga.....	69-73-68--210 (t-17th)
Mychael O'Berry.....	70-66-74--210 (t-17th)
Megan Schofill.....	71-68-72--211 (t-23rd)
Julie McCarthy.....	73-72-74--219 (t-48th)



**SEC CHAMPIONSHIP MATCH PLAY WINNING RESULTS**

**2021 • Birmingham, Ala.  
Greystone G&CC - Legacy  
Host: N/A**

1. Auburn.....	279-278-282--839
Kaleigh Telfer.....	69-72-68--209 (t-13th)
Elena Hualde Zúñiga.....	69-73-68--210 (t-17th)
Mychael O’Berry.....	70-66-74--210 (t-17th)
Megan Schofill.....	71-68-72--211 (t-23rd)
Julie McCarthy.....	73-72-74--219 (t-48th)

**Auburn def. Vanderbilt 3-1-1**

Megan Schofill (AU) def. Auston Kim (VU), 5&4  
 Tess Davenport (VU) def. Julie McCarthy (AU), 4&2  
 Kaleigh Telfer (AU) def. Louise Yu (VU), 1-UP  
 Mychael O’Berry (AU) def. Morgan Baxendale (VU), 7&6  
 Elena Hualde Zuniga (AU) and Celina Sattelkau (VU), AS

**Auburn def. Alabama 3-1-1**

Kaleigh Telfer (AU) def. Caroline Curtis (Bama), 3&2  
 Megan Schofill (AU) def. Benedetta Morasco (Bama), 19 holes  
 Brooke Sansom (AU) and Polly Mack (Bama), AS  
 Mychael O’Berry (AU) def. Kenzie Wright (Bama), 2&1  
 Emilie Overas (Bama) def. Elena Hualde Zuniga, 1-DOWN

**Auburn def. Mississippi State 5-0-0**

Kaleigh Telfer (AU) def. Abbey Daniel (MSU), 1-UP  
 Megan Schofill (AU) def. Ashley Gilliam (MSU), 1-UP  
 Brooke Sansom (AU) def. Clara Moyano (MSU), 1-UP  
 Mychael O’Berry (AU) def. Blair Stockett (MSU), 2&1  
 Elena Hualde Zúñiga def. Hannah Levi (MSU), 3&2

**SEC CHAMPIONSHIP RECORDS**

**Team Low Final Score**

1. 839 strokes.....	2021
2. 840 strokes.....	2024
3. 861 strokes.....	2010
4. 864 strokes.....	2022
864 strokes.....	2011
864 strokes.....	2002
7. 870 strokes.....	2009

**Team Low Round**

1. 278 strokes (3rd round).....	2024
278 strokes (2nd round).....	2021
3. 279 strokes (1st round).....	2024
279 strokes (1st round).....	2021
5. 280 strokes (1st round).....	2002
6. 282 strokes (3rd round).....	2021
282 strokes (2nd round).....	2006
8. 283 strokes (2nd round).....	2024
283 strokes (1st round).....	2011

**Best Individual Finish**

1. Patricia Sanz (Champion).....	2012
Maria Martinez (Champion).....	2006
Danielle Downe (Champion).....	2000
Marci Clemons (Champion).....	1996
Diane Rama (Champion).....	1989
Margaret Platt (Champion).....	1987
6. Megan Schofill (2nd).....	2023
Megan Schofill (2nd).....	2022
Celeste Troche (t-2nd).....	2000

**Low Individual Final Score**

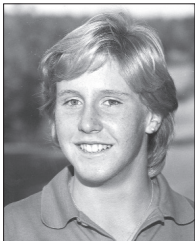
1. Anna Davis (206).....	2024
2. Megan Schofill (207).....	2022
3. Kaleigh Telfer (209).....	2021
4. Elena Hualde Zúñiga (210).....	2021
Mychael O’Berry (210).....	2021
6. Casey Weidenfeld (211).....	2024
Megan Schofill (211).....	2021
Maria Martinez (211).....	2006

9. Katie Cranston (212).....	2024
Cydney Clanton (212).....	2010
Haley Wilson (212).....	2010
Celeste Troche (212).....	2002

**Low Individual Round**

1. Mychael O’Berry (66, 2nd rd.).....	2021
2. Patricia Sanz (67, 2nd rd.).....	2011
4. Anna Davis (68, 3rd rd.).....	2024
Casey Weidenfeld (68, 1st rd.).....	2024
Megan Schofill (68, 2nd rd.).....	2021
Kaleigh Telfer (68, 3rd rd.).....	2021
Elena H. Zúñiga (68, 3rd rd.).....	2021
Julie McCarthy (68, 1st rd.).....	2019

**SEC INDIVIDUAL CHAMPIONS**



**Margaret Platt**  
1987



**Diane Rama**  
1989



**Marci Clemons**  
1996



**Danielle Downey**  
2000



**Maria Martinez**  
2006



**Patricia Sanz**  
2012

## NCAA REGIONAL RESULTS

**1993 (t-12th) • Baton Rouge, La.**  
**Santa Maria Country Club**  
**Host: LSU**

Auburn ..... 316-315-312--943  
 Barbara Paul ..... 75-77-75--227 (20th)  
 Tricia Laxton ..... 75-78-78--231 (t-32nd)  
 Rebeca Garcia ..... 85-79-79--243 (t-79th)  
 Amy Miller ..... 85-81-80--246 (t-86th)  
 Tracy Veto ..... 81-81-85--247 (t-88th)

**1994 (9th) • East Lansing, Mich.**  
**Forest Akers West Golf Course**  
**Host: Michigan State**

Auburn ..... 331-311-315--957  
 Barbara Paul ..... 81-79-75--235 (t-19th)  
 Marci Clemons ..... 81-80-78--239 (t-38th)  
 Tracy Veto ..... 83-74-86--243 (t-49th)  
 Tricia Laxton ..... 86-82-79--247 (t-70th)  
 Amy Miller ..... 86-78-83--247 (t-70th)

**1996 (t-5th) • Auburn, Ala.**  
**Grand National Lake Course**  
**Host: Auburn**

Auburn ..... 300-309-310--919  
 Robin Cook ..... 77-76-73--226 (t-12th)  
 Katie Gallina ..... 72-73-82--227 (t-16th)  
 Marci Clemons ..... 74-81-78--233 (t-32nd)  
 Tracy Veto ..... 77-79-85--241 (t-62nd)  
 Marty Goldthorp ..... 80-89-77--246 (82nd)

**1997 (t-3rd) • Normal, Ill.**  
**Prairie Vista Golf Course**  
**Host: Illinois State**

Auburn ..... 316-323-306-945  
 Katie Gallina ..... 73-81-73--227 (t-2nd)  
 Marci Clemons ..... 74-77-78--229 (t-5th)  
 Robin Cook ..... 83-78-77--238 (t-25th)  
 Marty Goldthorp ..... 86-87-78--251 (t-89th)  
 Kami Smith ..... 88-92-78--258 (t-99th)

**1998 (t-7th) • Durham, N.C.**  
**Duke Golf Club**  
**Host: Duke**

Auburn ..... 309-299-308--916  
 Kami Smith ..... 76-73-74--223 (t-8th)  
 Katie Gallina ..... 75-73-76--224 (t-12th)  
 Robin Cook ..... 75-76-78--229 (t-30th)  
 Marty Goldthorp ..... 83-77-80--240 (t-77th)  
 Audrey Fisher ..... 85-80-85--250 (t-98th)

**1999 (8th) • Blythewood, S.C.**  
**University Golf Course**  
**Host: South Carolina**

Auburn ..... 306-298-308--912  
 Courtney Swaim ..... 74-73-77--224 (t-17th)  
 Robin Cook ..... 74-76-75--225 (t-23rd)  
 Kami Smith ..... 77-73-80--230 (t-47th)  
 Marty Goldthorp ..... 81-76-76--233 (t-60th)  
 Kim Strong ..... 83-87-80--250 (t-99th)

**2000 (t-7th) • Columbus, Ohio**  
**OSU Golf Club - Scarlet Course**  
**Host: Ohio State**

Auburn ..... 301-298-308--907  
 Celeste Troche ..... 71-69-77--217 (3rd)  
 Danielle Downey ..... 75-74-77--226 (t-21st)  
 Courtney Swaim ..... 75-78-76--229 (t-34th)  
 Kami Smith ..... 80-86-78--244 (t-107th)  
 Kimberly Strong ..... 86-77-83--246 (t-113th)

**2001 (2nd) • Chapel Hill, N.C.**  
**Finley Golf Course**  
**Host: North Carolina**

Auburn ..... 294-290-295--879  
 Diana Ramage ..... 76-71-71--218 (t-5th)  
 Celeste Troche ..... 75-73-74--222 (t-10th)  
 Danielle Downey ..... 72-77-75--224 (t-15th)  
 Kimberly Strong ..... 72-72-80--224 (t-15th)  
 Courtney Swaim ..... 75-74-75--224 (t-15th)

**2002 (2nd) • Baton Rouge, La.**  
**The University Club**  
**Host: LSU**

Auburn ..... 287-293-292--872  
 Celeste Troche ..... 69-70-72--211 (2nd)  
 Courtney Swaim ..... 70-72-71--213 (t-3rd)  
 Diana Ramage ..... 74-78-73--225 (t-45th)  
 Danielle Downey ..... 74-76-76--226 (t-54th)  
 Kingsley Barrett ..... 79-75-77--231 (t-70th)

**2003 (4th) • Clemmons, N.C.**  
**Salem Glen Country Club**  
**Host: Wake Forest**

Auburn ..... 298-291-278--867  
 Celeste Troche ..... 70-71-73--214 (t-8th)  
 Diana Ramage ..... 75-75-68--218 (t-16th)  
 Anne Hutto ..... 76-73-71--220 (t-22nd)  
 Maria Martinez ..... 77-77-66--220 (t-22nd)  
 Kingsley Barrett ..... 77-72-75--224 (t-36th)

**2004 (11th) • Howey-in-the-Hills, Fla.**  
**El Campeon Course**  
**Host: Stetson**

Auburn ..... 302-312-315--929  
 Nicole Hage ..... 76-77-76--229 (t-29th)  
 Kingsley Barrett ..... 74-79-79--232 (41st)  
 Maria Martinez ..... 79-76-79--234 (46th)  
 Leah Hart ..... 73-84-82--239 (t-61st)  
 Jennifer Head ..... 80-80-81--241 (t-69th)

**2005 (1st) • Lubbock, Texas**  
**Texas Tech Course**  
**Host: Texas Tech**

Auburn ..... 294-309-293--896  
 Diana Ramage ..... 68-77-67--212 (1st)  
 Nicole Hage ..... 74-75-75--224 (t-6th)  
 Margaret Shirley ..... 74-79-76--229 (t-31st)  
 Maria Martinez ..... 78-78-75--231 (t-42nd)  
 Jessica Lovell ..... 78-85-80--243 (t-94th)

**2006 (6th) • Browns Summit, N.C.**  
**Bryan Park Golf Course**  
**Host: Wake Forest**

Auburn ..... 293-301-285--879  
 Jessica Lovell ..... 73-74-71--218 (t-15th)  
 Maria Martinez ..... 72-74-73--219 (t-18th)  
 Abigale Schepperle ..... 72-78-73--223 (t-35th)  
 Nicole Hage ..... 78-78-68--224 (43rd)  
 Margaret Shirley ..... 76-75-75--226 (t-54th)

**2007 (4th) • Baton Rouge, La.**  
**The University Club**  
**Host: LSU**

Auburn ..... 293-282-286--861  
 Nicole Hage ..... 68-70-69--207 (4th)  
 Margaret Shirley ..... 75-70-73--218 (t-36th)  
 Abigale Schepperle ..... 76-41-72--219 (t-044th)  
 Candace Schepperle ..... 75-73-72--220 (t-048th)  
 Marisa Milligan ..... 75-71-78--224 (t-62nd)

**2008 (4th) • Athens, Ga.**  
**University of Georgia Golf Course**  
**Host: Georgia**

Auburn ..... 296-302-296--894  
 Cydney Clanton ..... 70-75-72--217 (t-4th)  
 Candace Schepperle ..... 74-76-71--221 (14th)  
 Margaret Shirley ..... 75-78-75--228 (t-36th)  
 Mariana Macias ..... 77-76-78--231 (t-55th)  
 Sarah Thead ..... 77-75-79--231 (t-55th)

**2009 (10th) • Gainesville, Fla.**  
**Mark Bostick Golf Course**  
**Host: Florida**

Auburn ..... 304-294-295--893  
 Candace Schepperle ..... 71-70-75--216 (t-8th)  
 Haley Wilson ..... 79-73-68--220 (t-23rd)  
 Patricia Sanz ..... 76-73-75--224 (t-46th)  
 Cydney Clanton ..... 78-78-77--233 (t-80th)  
 Sarah Thead ..... 79-80-79--238 (t-90th)

**2010 (t-3rd) • Greenville, N.C.**  
**Ironwood Country Club**  
**Host: East Carolina**

Auburn ..... 280-295-293--868  
 Carlie Yadloczky ..... 68-73-70--211 (2nd)  
 Candace Schepperle ..... 71-72-75--218 (t-19th)  
 Cydney Clanton ..... 71-76-74--221 (t-36th)  
 Patricia Sanz ..... 75-74-74--223 (t-47th)  
 Haley Wilson ..... 70-77-77--224 (t-54th)

**2011 (13th) • Daytona Beach, Fla.**  
**LPGA International Legends Course**  
**Host: Stetson**

Auburn ..... 302-299-302--903  
 Cydney Clanton ..... 77-73-72--222 (t-31st)  
 Marta Sanz ..... 73-78-76--227 (t-52nd)  
 Haley Wilson ..... 75-74-78--227 (t-52nd)  
 Patricia Sanz ..... 77-76-77--230 (t-69th)  
 Carlie Yadloczky ..... 78-76-77--231 (t-78th)

**2012 (12th) • Columbus, Ohio**  
**OSU Golf Club – Scarlet Course**  
**Host: Ohio State**

Auburn	306-304-312--922
Patricia Sanz	74-77-79--230 (t-37th)
Marta Sanz	76-76-78--230 (t-37th)
Victoria Trapani	79-76-78--233 (t-48th)
Carlie Yadloczky	77-75-83--235 (t-57th)
Haley Wilson	83-79-77--239 (t-84th)

**2013 (8th) • Auburn, Ala.**  
**Auburn University Club**  
**Host: Auburn**

Auburn	299-284-294--877
Marta Sanz	77-68-69--214 (t-11th)
Diana Fernandez	71-71-76--218 (t-26th)
Carlie Yadloczky	74-72-74--220 (t-33rd)
Jamie Yun	77-73-78--228 (t-73rd)
Victoria Trapani	80-79-75--234 (t-96th)

**2014 (15th) • Tallahassee, Fla.**  
**SouthWood Golf Club**  
**Host: Florida State**

Auburn	293-301-293--887
Marta Sanz	74-75-73--222 (t-47th)
Victoria Trapani	73-78-81--222 (t-47th)
Alex Harrell	74-74-75--223 (t-55th)
Clara Baena	72-77-74--223 (t-55th)
Diana Fernandez	77-75-80--232 (t-106th)

**2015 (12th) • San Antonio, Texas**  
**Briggs Ranch Golf Club**  
**Host: UTSA**

Auburn	291-293-292=876
Sophia Schubert	73-70-71=214 (t-13th)
Alex Harrell	70-74-76=220 (t-46th)
Victoria Trapani	73-73-74=220 (t-46th)
Kelli Murphy	75-76-71=222 (t-54th)
Clara Baena	76-76-79=231 (79th)

**2017 (12th) • Athens, Ga.**  
**University of Georgia Golf Course**  
**Host: Georgia**

Auburn	305-298-297=900
Elena Hualde	75-72-73=220 (t-19th)
Kayley Marschke	76-74-75=225 (t-37th)
Kelli Murphy	77-75-74=226 (t-43rd)
Michaela Owen	77-77-75=229 (t-59th)
Mai Dechathipat	82-77-78=237 (t-80th)

**2018 (t-3rd) • Austin, Texas**  
**University of Texas Golf Club**  
**Host: Texas**

Auburn	292-291-286=869
Kaleigh Telfer	73-71-71=215 (t-16th)
Elena Hualde	73-71-72=216 (t-19th)
Kayley Marschke	74-78-71=223 (t-42nd)
Kelli Murphy	72-73-78=223 (t-42nd)
Michaela Owen	76-76-72=224 (t-47th)

**2019 (5th) • Auburn, Ala.**  
**Saugahatchee Country Club**  
**Host: Auburn**

Auburn	299-290-285=874
Elena Hualde	75-71-69=215 (t-8th)
Kaleigh Telfer	75-72-71=218 (t-17th)
Mychael O’Berry	74-77-71=222 (t-33rd)
Brooke Sansom	75-72-75=222 (t-33rd)
Julie McCarthy	76-75-74=225 (t-51st)

**2021 (t-4th) • Louisville, Ky.**  
**U of L Golf Club**  
**Host: Louisville**

Auburn	296-296-286=878
Elena Hualde	74-72-70=216 (11th)
Kaleigh Telfer	73-73-72=218 (t-16th)
Megan Schofill	77-75-71=223 (t-34th)
Mychael O’Berry	72-76-77=225 (t-45th)
Elina Sinz	77-76-X=153 (N/A)
Anna Foster	X-X-73=73 (N/A)

**2022 (t-3rd) • Stillwater, Okla.**  
**Karsten Creek**  
**Host: Oklahoma State**

Auburn	313-292-276=881
Mychael O’Berry	77-72-69=218 (T7th)
Kaleigh Telfer	77-72-69=218 (T7th)
Anna Foster	78-74-67=219 (T10th)
Megan Schofill	81-74-78=233 (T39)
Elina Sinz	X-77-71=148 (60th)

**2023 (6th) • San Antonio, Texas**  
**TPC San Antonio**  
**Host: UTSA**

Auburn	304-290-299=893
Megan Schofill	73-72-76=221 (T16th)
Casey Weidenfeld	77-70-77=224 (T25th)
Katie Cranston	78-75-74=227 (T37th)
Anna Foster	79-73-75=227 (T37th)
Elina Sinz	76-79-74=229 (43rd)

**2024 (1st) • Auburn, Ala.**  
**Auburn University Club**  
**Host: Auburn**

Auburn	290-287-297=874
Anna Davis	73-69-69=211 (1st)
Megan Schofill	69-73-72=214 (T2nd)
Casey Weidenfeld	75-70-77=222 (T16th)
Anna Foster	73-75-79=227 (T25th)
Katie Cranston	75-77-80=232 (T40th)

**NCAA REGIONAL RECORDS**

**Best Team Finish**

1. 1st	2024
1st	2005
3. 2nd	2001
2nd	2002
5. t-3rd	2022
t-3rd	2018
t-3rd	2010
t-3rd	1997

**Low Team Final Score**

1. 861 strokes	2007
2. 867 strokes	2003
3. 868 strokes	2010
4. 869 strokes	2018
5. 872 strokes	2002

**Low Team Round**

1. 276 strokes (3rd rd.)	2022
2. 278 strokes (3rd rd.)	2003
3. 280 strokes (1st rd.)	2010
4. 282 strokes (2nd rd.)	2007
5. 284 strokes (2nd rd.)	2013
6. 285 strokes (3rd rd.)	2019
285 strokes (3rd rd.)	2006
8. 286 strokes (3rd rd.)	2021
286 strokes (3rd rd.)	2018
286 strokes (3rd rd.)	2007

**Best Individual Finish**

1. Anna Davis (1st)	2024
Diana Ramage (1st)	2005
2. Megan Schofill (T2nd)	2024
Carlie Yadloczky (2nd)	2010
Celeste Troche (2nd)	2002
Katie Gallina (t-2nd)	1997
5. Celeste Troche (3rd)	2000
Courtney Swaim (t-3rd)	2002

**Low Individual Final Score**

1. Nicole Hage (207)	2007
2. Anna Davis (211)	2024
Carlie Yadloczky (211)	2010
Celeste Troche (211)	2002
5. Courtney Swaim (213)	2002
6. Megan Schofill (214)	2024
Sophia Schubert (214)	2015
Marta Sanz (214)	2013
Celeste Troche (214)	2003

**Low Round**

1. Maria Martinez (66, 3rd rd.)	2003
2. Marta Sanz (68, 2nd rd.)	2013
Carlie Yadloczky (68, 1st rd.)	2010
Haley Wilson (68, 3rd rd.)	2009
Diana Ramage (68, 2nd rd.)	2003
Nicole Hage (68, 3rd rd.)	2006

## NCAA CHAMPIONSHIP RESULTS

**1989 (13th) • Palo Alto, Calif.**  
**Stanford Golf Course**  
**Host: Stanford**

Auburn .....	315-310-309-317--1251
Margaret Platt.....	76-71-75-77--299 (8th)
Diane Rama.....	77-77-75-83--312(t-37th)
Diana Miles.....	84-81-78-82--325 (t-82nd)
Sallie Ransom.....	81-84-81-79--325 (t-82nd)
Missy Tuck.....	81-81-86-79--327 (t-89th)

**1990 (8th) • Hilton Head, S.C.**  
**Arthur Hills Course at Palmetto Dunes**  
**Host: South Carolina**

Auburn .....	306-307-318-298--1229
Missy Tuck.....	77-72-76-75--300 (t-8th)
Joal Rieder.....	74-79-82-73--308 (t-25th)
Diane Rama.....	76-77-81-77--311(t-35th)
Anne Jones.....	79-82-82-75--318 (t-61st)
Rebeca Garcia .....	82-79-79-WD

**1996 (18th) • La Quinta, Calif.**  
**La Quinta Country Club (Dunes Course)**  
**Host: UCLA**

Auburn .....	327-330-332-320--1309
Marci Clemons.....	77-78-82-74--311(t-16th)
Robin Cook .....	82-81-83-81--327 (t-61st)
Katie Gallina.....	78-87-84-81--330 (76th)
Marty Goldthorp....	90-84-83-84--341(t-90th)
Tracy Veto .....	90-89-97-91--367 (96th)

**1997 (13th) • Columbus, Ohio**  
**The Scarlet Course**  
**Host: Ohio State**

Auburn .....	303-319-296-303--1221
Marci Clemons.....	76-80-69-76--301 (t-31st)
Robin Cook .....	76-78-75-77--306(t-49th)
Katie Gallina.....	77-82-76-74--309 (t-61st)
Marty Goldthorp.....	81-83-76-76--316(t-79th)
Kami Smith .....	74-79-80-87--320 (t-88th)

**1998 (19th) • Madison, Wis.**  
**University Ridge Golf Course**  
**Host: Wisconsin**

Auburn .....	295-314-309-313--1231
Robin Cook .....	80-73-72-74--299 (t-27th)
Marty Goldthorp....	74-79-75-78--306 (t-55th)
Katie Gallina.....	72-84-79-79--314 (t-82nd)
Audrey Fisher.....	72-80-83-82--317 (t-89th)
Kami Smith .....	77-82-85-82--326 (97th)

**1999 (t-15th) • Tulsa, Okla.**  
**Tulsa Country Club**  
**Host: Tulsa**

Auburn .....	318-312-314--944
Robin Cook .....	78-76-73--227 (t-15th)
Courtney Swaim.....	75-76-78--229 (t-24th)
Kami Smith .....	84-77-80--241 (74th)
Marty Goldthorp.....	81-86-83--250 (t-95th)
Audrey Fisher.....	84-83-87--254 (t-97th)

**2000 (6th) • Sunriver, Ore.**  
**Crosswater Club**  
**Host: Oregon State**

Auburn .....	302-302-300-306--1210
Danielle Downey.....	71-74-72-77--294 (4th)
Celeste Troche.....	77-77-73-74--301(t-25th)
Courtney Swaim.....	73-76-77-78--304 (t-41st)
Kimberly Strong .....	81-75-78-77--311(t-77th)
Kami Smith .....	81-77-81-82--321(t-107th)

**2001 (4th) • Howey-in-the-Hills, Fla.**  
**Mission Inn Golf and Tennis Resort**  
**Host: Stetson**

Auburn .....	300-294-294-305--1193
Celeste Troche.....	72-68-74-77--291 (9th)
Courtney Swaim.....	73-74-76-77--300(t-30th)
Danielle Downey.....	76-78-75-73--302(t-39th)
Diana Ramage.....	82-74-69-80--305(t-55th)
Kimberly Strong ....	79-78-85-78--320(t-106th)

**2002 (t-2nd) • Auburn, Wash.**  
**Washington National Golf Club**  
**Host: Washington**

Auburn .....	298-300-285-287--1170
Danielle Downey.....	73-69-70-72--284 (t-2nd)
Celeste Troche.....	72-75-71-71--289 (t-10th)
Diana Ramage.....	76-78-71-73--298 (t-45th)
Courtney Swaim.....	77-78-75-71--301 (t-60th)
Kingsley Barrett.....	84-79-73-75--311 (106th)

**2003 (9th) • West Lafayette, Ind.**  
**Kampen Course**  
**Host: Purdue**

Auburn .....	317-303-300-304--1224
Danielle Downey.....	76-73-77-74--300 (t-6th)
Diana Ramage.....	81-72-74-74--301 (t-11th)
Celeste Troche.....	76-81-71-75--303 (t-19th)
Maria Martinez.....	84-77-81-81--323 (101st)
Kingsley Barrett.....	87-85-78-83--333 (120th)

**2005 (3rd) • Bend, Ore.**  
**Sunriver Course**  
**Host: Oregon**

Auburn .....	290-296-295-295--1176
Nicole Hage .....	73-75-70-71--289 (5th)
Diana Ramage.....	73-71-76-73--293 (t-12th)
Maria Martinez.....	72-73-77-74--296 (t-16th)
Abigale Schepperle	72-77-74-81--304 (t-68th)
Margaret Shirley.....	79-79-75-77--310 (t-98th)

**2006 (12th) • Columbus, Ohio**  
**Ohio State Scarlet Course**  
**Host: Ohio State**

Auburn .....	301-298-305-304--1208
Abigal Schepperle.....	74-71-77-75--297 (t-21st)
Maria Martinez .....	73-76-75-77--301 (t-38th)
Margaret Shirley .....	77-73-78-79--307 (t-68th)
Nicole Hage .....	77-82-75-75--309 (t-79th)
Jessica Lovell.....	80-78-80-77--315 (t-98th)

**2007 (9th) • Daytona Beach, Fla.**  
**LPGA International**  
**Host: Central Florida**

Auburn .....	309-304-300-300--1213
Candace Schepperle	79-72-74-73--298 (t-14th)
Nicole Hage .....	78-77-77-71--303 (t-34th)
Margaret Shirley.....	77-76-72-78--303 (t-34th)
Marisa Milligan.....	75-79-77-78--309 (t-65th)
Abigale Schepperle	82-80-77-78--317 (t-95th)

**2008 (t-12th) • Albuquerque, N.M.**  
**New Mexico Championship Golf Club**  
**Host: New Mexico**

Auburn .....	289-315-309-302--1215
Cydney Clanton .....	74-75-77-71--297 (t-23rd)
Margaret Shirley.....	71-80-78-76--305 (t-63rd)
Candace Schepperle .....	69-82-79-78--308 (t-75th)
Sarah Thead .....	75-78-75-80--308 (t-75th)
Mariana Macias .....	76-82-80-77--315 (t-96th)

**2010 (t-11th) • Wilmington, N.C.**  
**Country Club of Landfall**  
**Host: UNC-Wilmington**

Auburn .....	293-296-295-299--1183
Cydney Clanton .....	72-71-72-66--281 (t-3rd)
Candace Schepperle	73-71-74-78--296 (t-43rd)
Haley Wilson.....	73-77-74-78--302 (t-76th)
Patricia Sanz.....	75-77-75-77--304 (t-86th)
Charlie Yadloczky.....	77-76-81-80--317 (120th)

**2013 (6th) Athens, Ga.**  
**University of Georgia Golf Course**  
**Host: Georgia**

Auburn .....	305-292-285-301--1183
Marta Sanz.....	79-69-68-74--290 (t-10th)
Victoria Trapani.....	80-72-69-74--295 (t-29th)
Charlie Yadloczky.....	74-77-70-75--296 (t-32nd)
Diana Fernandez.....	72-75-78-80--305 (t-73rd)
Jamie Yun.....	81-76-83-78--318 (t-120th)

**2018 (t-15th) • Stillwater, Okla.**  
**Karsten Creek Golf Club**  
**Host: Oklahoma State**

Auburn .....	304-306-293--903
Kelli Murphy.....	77-75-72--224 (t-47th)
Kaleigh Telfer.....	75-74-77--226 (t-57th)
Elena Hualde.....	82-76-71--229 (t-75th)
Kayley Marschke.....	73-82-75--230 (t-83rd)
Michaela Owen .....	79-81-75--235 (t-105th)

**2019 (t-3rd) • Fayetteville, Ark.**  
**The Blessings Golf Club**  
**Host: Arkansas**

Auburn .....	313-295-307--915
Kaleigh Telfer.....	76-72-76--224 (t-16th)
Julie McCarthy .....	78-73-78--229 (t-36th)
Brooke Sansom .....	78-80-75--233 (t-61st)
Mychael O'Berry.....	83-74-78--235 (t-73rd)
Elena Hualde Zúñiga .....	81-76-86--243 (t-111th)

**2021 (t-5th) • Scottsdale, Ariz.**  
**Grayhawk Golf Club**  
**Host: Arizona State**

Auburn .....	305-299-288-278--1170
Elena Hualde Zúñiga .....	75-73-74-69--291 (t-20th)
Megan Schofill .....	74-74-76-68--292 (t-28th)
Mychael O'Berry .....	77-75-73-69--294 (t-36th)
Kaleigh Telfer .....	79-77-71-72--299 (t-59th)
Anna Foster .....	80-77-70-76--303 (t-70th)

**2022 (5th) • Scottsdale, Ariz.**  
**Grayhawk Golf Club**  
**Host: Arizona State**

Auburn .....	296-290-299-290 --1175
Megan Schofill .....	72-70-82-71--295 (t-27th)
Kaleigh Telfer .....	72-78-71-75--296 (t-31st)
Anna Foster .....	76-71-76-74--297 (t-40th)
Mychael O'Berry .....	76-71-78-75--300 (t-55th)
Elna Sinz .....	79-78-74-70--301 (t-57th)

**2024 (8th) • Carlsbad, Calif.**  
**Omni La Costa Resort & Spa Champions Course**  
**Host: Texas**

Auburn .....	285-290-301-296=1172
Anna Davis .....	69-72-80-71--292 (T19th)
Megan Schofill .....	71-74-70-78--293 (T24th)
Anna Foster .....	75-74-77-74--300 (T53rd)
Casey Weidenfeld .....	70-70-85-76--301 (T58th)
Katie Cranston .....	77-77-74-75--303 (T65th)

**NCAA CHAMPIONSHIP RECORDS**

**Best Team Finish**

- 1. t-2nd..... 2002
- 2. t-3rd.....2019
- 3rd.....2005
- 4. 4th.....2001
- 5. t-5th.....2021

**Low Team Final Score (72 Holes)**

- 1. 1,170 strokes.....2021
- 1,170 strokes..... 2002
- 3. 1,172 strokes.....2024
- 4. 1,175 strokes.....2022
- 5. 1,183 strokes.....2010
- 1,183 strokes.....2013
- 7. 1,193 strokes.....2001

**Low Team Final Score (54 Holes)**

- 1. 903 strokes.....2018

**Low Team Round**

- 1. 278 strokes (4th round).....2021
- 2. 285 strokes (1st round).....2024
- 285 strokes (3rd round)..... 2002
- 285 strokes (3rd round).....2013

- 5. 287 strokes (4th round)..... 2002
- 6. 288 strokes (3rd round)..... 2021

**Best Individual Finish**

- 1. Danielle Downey (t-2nd)..... 2002
- 2. Cydney Clanton (t-3rd)..... 2010
- 3. Danielle Downey (4th).....2000
- 4. Danielle Downey (t-6th)..... 2003
- 5. Margaret Platt (8th).....1989
- Missy Tuck (t-8th).....1990
- 7. Celeste Troche (9th)..... 2001
- 8. Celeste Troche (t-10th)..... 2002
- Marta Sanz (t-10th).....2013

**Low Individual Final Score (72 Holes)**

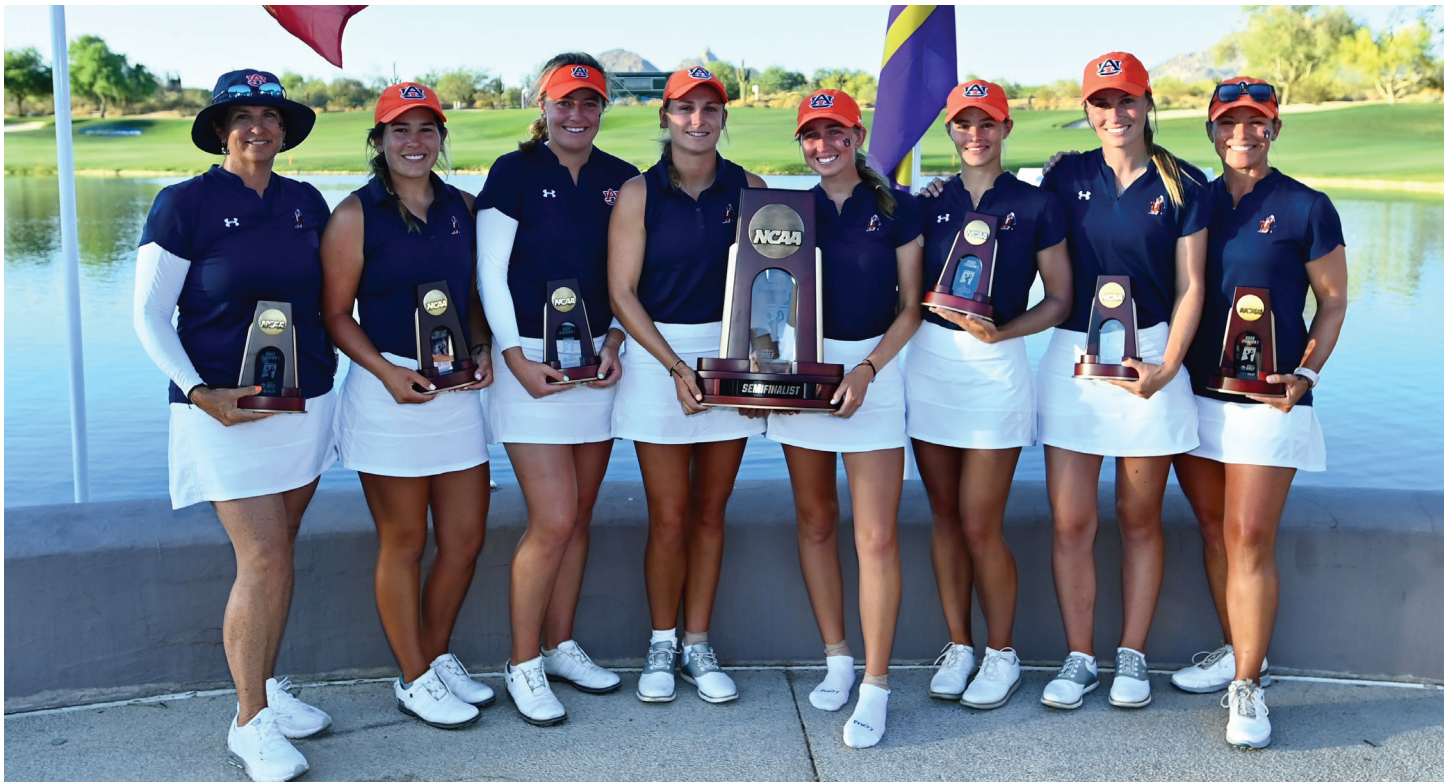
- 1. Cydney Clanton (281)..... 2010
- 2. Danielle Downey (284)..... 2002
- 3. Celeste Troche (289)..... 2002
- 4. Marta Sanz (290).....2013
- 5. Elena Hualde Zúñiga (291) ...2021
- Celeste Troche (291)..... 2001

**Low Individual Final Score (54 Holes)**

- 1. Kaleigh Telfer (224).....2019
- Kelli Murphy (224).....2018

**Low Individual Round**

- 1. Cydney Clanton (66, 4th rd.)....2010
- 2. Megan Schofill (68, 4th rd.).....2021
- Marta Sanz (68, 3rd rd.).....2013
- Celeste Troche (68, 2nd rd.).....2001
- 5. Anna Davis (69, 1st rd.)..... 2024
- Elena H. Zúñiga (69, 4th rd.).....2021
- Mychael O'Berry (69, 4th rd.)...2021
- Marta Sanz (69, 2nd rd.).....2013
- Danielle Downey (69, 2nd rd.)2002
- Marci Clemons (69, 3rd rd.)..... 1997





## ALL-TIME ROSTER

<b>A</b>		<b>Rachel Gourley</b>	<b>2022-</b>	<b>Q</b>	
Cam Abascal	1980-81			Nicole Quinn	2012-15
Sophie Anand	2022-23			<b>R</b>	
<b>B</b>		<b>H</b>		Diane Rama	1987-90
Jane Baker	1975-78	Dori Hale	1994	Diana Ramage	2001-03, 2005
Clara Baena	2014-17	Nicole Hage	2004-07	Sallie Ransom	1988-91
Kingsley Barrett	2002-05	Alex Harrell	2013-16	Ann Ranta	1978-81
Karlin Beck	2007-11	Lauren Hawkins	2007-09	Joal Rieder	1987-90
Kristie Bowen	1990-92	Reba Haynes	1976-78	Chandler Rosholt	2019-22
Ann Allen Brown	1976	Jennifer Head	2003-04	<b>S</b>	
Susan Brugon	1985-86	Leigh Head	1985-88	Kelly Sanders	1990-92
<b>C</b>		Linda Hogue	1978-81	Brooke Sansom	2018-21
Meghan Ciampi	2002-05	Elena Hualde	2017-20	Marta Sanz	2011-14
Meg Cimino	1985-88	Anne Hutto	2000-02	Patricia Sanz	2009-12
Cydney Clanton	2008-11	<b>J</b>		Holly Sarvis	1985-86
Karen Clark	1979-81	Jan Jehle	1974, 1976	Abigale Schepperle	2005-08
Marci Clemons	1994-97	Anne Jones	1987-90	Candace Schepperle	2007-10
Stephanie Comstock	1990-92	Morgan Jones	2022-24	Sophia Schubert	2015
Robin Cook	1996-99	<b>K</b>		Megan Schofill	2019-24
<b>Katie Cranston</b>	<b>2023-</b>	Sue Karamanian	1976	Kelly Selman	1980-81
Johandra Culp	1985	Kim Kelly	1978-81	Margaret Shirley	2005-08
Caroline Culver	1978	Casey Kennedy	2010	Eliana Sinz	2021-23
Ashley-Sinclair Curtis	2021-24	Mary Pat Kircher	1974-77	Kami Smith	1997-00
Kathryn Cypherd	1993-94	Regina Korinek	1990-93	<b>Elle Squires</b>	<b>2024-</b>
<b>D</b>		Cheryl Knorr	1974	Mary Stets	1977-78
<b>Balma Dávalos Guaita</b>	<b>2024-</b>	<b>L</b>		Kimberly Strong	1999-02
<b>Anna Davis</b>	<b>2024-</b>	Tricia Laxton	1993-94	Courtney Swaim	1999-02
Mai Dechathipat	2016-17	Jessica Lovell	2004-07	<b>T</b>	
Sue Dempsey	1974, 1976	<b>M</b>		Melanie Talbott	2016-19
Virginia Derby	1985	Mariana Macias	2006-09	Kaleigh Telfer	2018-22
Maria Donado	2016-17	Sally Marble	1976	Sarah Thead	2007-09
Danielle Downey	2000-03	Kayley Marschke	2017-20	Sharon Thomas	1978-81
<b>E</b>		Maria Martinez	2003-06	Victoria Trapani	2012-15
Lakin Eddy	2012-15	Julie McAlevy	1987-88	Celeste Troche	2000-02
Kim Evans	1978-81	Julie McCarthy	2018-22	Missy Tuck	1988-91
<b>F</b>		Diana Miles	1985-88	Lori Tynan	1974-76
Krulien Fairley	1977-78	Amy Miller	1992-95	<b>V</b>	
Caren Beth Felps	1992-95	Marisa Milligan	2007-08	Tracy Veto	1993-96
<b>Anne Fernandez</b>	<b>2024-</b>	Martha Monk	1980-81	Wendy Veto	1998
Diana Fernandez	2011-14	Kelli Murphy	2015-18	<b>W</b>	
Crystal Ferrier	1998-00	<b>O</b>		Candy Walker	1976-78
Audrey Fisher	1998-00	Mychael O'Berry	2017-22	<b>Casey Weidenfeld</b>	<b>2022-</b>
Anna Foster	2021-24	Robin O'Leary	1978	Megan Wilshire	2013-14
<b>G</b>		Susan Otolski	1986-89	Haley Wilson	2009-12
Katie Gallina	1995-98	Madison Overbey	2009-11	Rene Wolfe	1974, 1976
Rebeca Garcia	1990-93	Michaela Owen	2015-18	Janet Wooten	1991
Kathy Ghioto	1980-81	<b>P</b>		<b>Carys Worby</b>	<b>2023-</b>
Ami Gianchandani	2023-24	Barbara Paul	1991-94	<b>Y</b>	
Patrice Giddings	1985-86	Gina Piatt	1978-81	Carlie Yadloczky	2010-13
Marty Goldthorp	1996-99	Margaret Platt	1986-89	Jamie Yun	2013-16