

# General Imaging Ultrasound in a Whole New Light.

Introducing the

## Acclarix™ AX8

Compact Ultrasound System



GESTURE-CONTROL USER INTERFACE

APPLICATION-BASED WORKFLOW

USER-FOCUSED DESIGN

UNPARALLELED VALUE

DEFINITIVE IMAGE QUALITY



## EDAN

A world of potential



# It's a Tour de Force

Redefining innovation through value and performance

It's the dawning of a new day in the world of compact ultrasound — and it turns out you really can have it all. The remarkable new Acclarix™ AX8 Compact Ultrasound System delivers a powerhouse combination of features in a remarkably small package — making it the ideal choice for tight environments. Acclarix has been designed from the ground up with a relentless focus on delivering unexpected levels of innovation and performance at a price point that is equally surprising.

- Definitive Imaging
- Intelligent Workflow
- Distinctive Design
- Intrinsic Quality

Sleek compact design  
for portable exam environments



Tilt-and-swivel monitor for optimal  
viewing during procedures



Configurable control panel  
lets you prioritize functions



Dual touch screens  
streamline exam workflow



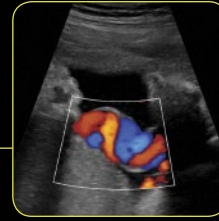
# A Clear Vision

## Ultrasound reimaged

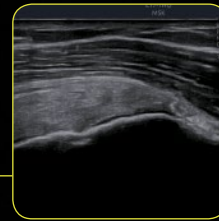
Born of a vision to deliver meaningful design innovations that benefit the user, Acclarix features a host of design breakthroughs that make day-to-day operation easy, fast and intuitive. The result is an elegant simplicity where form and function meet at the tips of your fingers.

- Unparalleled Image Quality with One-Key Optimization
- Needle Visualization Technology Improves Needle Identification – Even at Steep Angles
- Application-Specific Exam and Imaging Presets
- Unique Gesture-Control User Interface
- Tilt-and-Swivel, HD, Monitor
- Completely Sealed Control Panel to Aid in Maintaining Infection Control
- Extended Battery Life

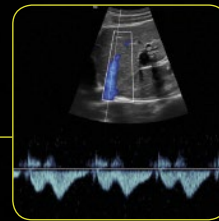
Adaptive color Doppler imaging provides excellent hemodynamic display in this 37-week umbilical cord



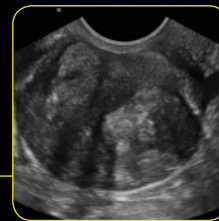
Tissue adaptive imaging continuously and automatically optimizes the image enabling rapid visualization of the supraspinatus tendon



Exceptional mixed mode performance is demonstrated in this interrogation of the left hepatic vein



Excellent contrast and detail resolution, along with superb penetration is displayed in this endovaginal image of a fibroid uterus



# Stunning Clarity

## Definitive image quality

Sleek design and user-friendly features are just part of the story. Acclarix is also designed to deliver amazing clarity and stunning image quality quickly—eliminating the need to tweak imaging controls.

- High-fidelity, high-channel count configuration results in superb detail resolution, particularly when scanning at depth
- New generation of transducers with exquisite sensitivity so you can appreciate even the smallest details
- Highly sensitivity and easy-to-use color and spectral Doppler allow you to rapidly interrogate blood vessels
- Continuous and automatic image optimization facilitates identification of tissue boundaries
- Exceptional computing power resulting in outstanding image processing



# The Virtue of Value

How can Edan deliver so much innovation AND so much value? By capitalizing on the experience and expertise of a truly global enterprise. Acclarix technology is the result of Silicon Valley innovation and engineering excellence combined with Chinese design and manufacturing proficiency. The Acclarix AX8 is now poised to deliver unmatched value and performance across a broad range of applications:

- Abdomen
- Difficult-to-Image
- OB/GYN
- Small Parts
- Breast
- Nerve
- Musculoskeletal
- Intraoperative
- Prostate
- Vascular
- Cardiac Screening

# Transducer Specifics

Imaging Array Format	Transducer Name	Fundamental Frequencies	Harmonic Frequencies
Curved Linear Array	C5-2XQ	2.0 – 5.0 MHz	H3.0 – 5.0 MHz
Linear Array	L10-4Q	4.0 – 9.0 MHz	H6.0 – 10.0 MHz
High-Frequency Linear Array	L17-7HQ	7.0 – 14.0 MHz	H9.0 – 17.0 MHz
Endocavity Tightly Curved Array	E8-4Q	4.0 – 8.0 MHz	H5.0 – 8.0 MHz
Phased Array	P5-1XQ	1.0 – 5.0 MHz	H2.5 – 5.0 MHz
High-Frequency Compact Linear Array	L17-7SQ	7.0 – 14.0 MHz	H9.0 – 17.0 MHz



## About Edan

Edan is a healthcare company dedicated to improving the human condition around the world by delivering value-driven, innovative and high-quality medical products and services. For over 20 years, Edan has been pioneering a comprehensive line of medical solutions that address a broad range of healthcare practices including:

- Diagnostic ECG
- Patient Monitoring
- OB/GYN
- Ultrasound Imaging
- Point-of-Care Testing
- In-vitro Diagnostics
- Veterinary

Healthcare professionals around the world depend on Edan's breakthrough medical technologies and outstanding customer support.



**Distributed by:**

DRE Medical Equipment

1800 Williamson Court • Louisville, KY 40223  
dremed.com • 1-800-477-2006