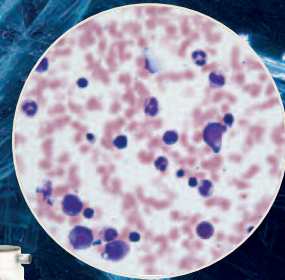
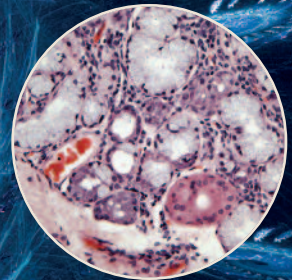
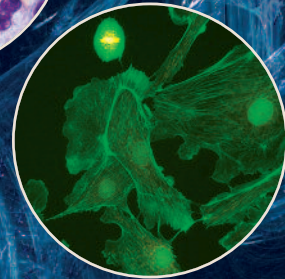
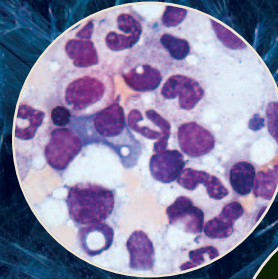


**ACCU-SCOPE® microscopes are engineered  
to the highest quality standards**



*Delivering Quality thru Vision*



## Components

### A Eyepieces

Large viewing area with extra wide field focusable 10x eyepieces with a 22mm field of view and rubber eyeguards. Eyepieces accept 26mm reticles.

### B Viewing Head

A 30° viewing angle for ergonomic comfort with an interpupillary distance adjustment range of 48 – 75mm assures fatigue free viewing during extended observation sessions. An optional tilting ergonomic viewing head with a variable inclination can provide additional user comfort.

### C Nosepiece

Inward facing quintuple revolving nosepiece enables maximum flexibility for a wide range of magnification observations and a variety of objective combinations. Objectives can be quickly and easily changed.

### D Objectives

Featuring ACCU-SCOPE's AIS infinity optical system, which provides renowned resolution, contrast and clarity that is among the very best in this class of microscope.

### E Stage

Graduated mechanical stage allows for easy recording of coordinates. Ergonomic low position coaxial control knobs allow the user to easily and comfortably move the slide across the stage. A hard coating protects the stage from scratches and wear. Movement range is 75mm (X) by 55mm (Y). A ceramic-coated graduated mechanical stage with right hand low position control and torque adjustment mechanism is also available. A user controlled upper stage limit allows the user to prevent damage to the objectives or the specimen.

### F Condenser

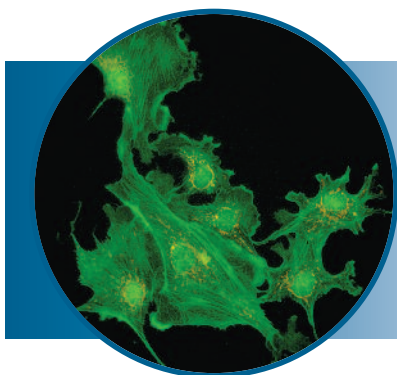
The flip top achromatic N.A. 0.90 condenser provides optimal illumination for observation and photomicrography at all objective magnification levels from 2x to 100x. A N.A. 1.1 abbe condenser is also available to provide bright even illumination from 4x to 100x. The condenser is mounted on a rack and pinion and incorporates an iris diaphragm with position guide markings for each objective to maximize resolution, contrast control and ease of use.

### G Field Iris Diaphragm

An advanced calibrated field iris diaphragm for Koehler illumination reduces extraneous light to deliver images with sharper contrast. Unmounted Ø 45mm filters can be placed quickly and easily on the filter holder above the aperture.

### H Illuminator

A 6 volt 30 watt halogen Kohler illuminator system provides bright, even illumination for all contrast techniques. The illuminator is pre-centered with an adjustable brightness control.



## Excellent Performance and Value in Routine Fluorescence Observation

The 3025's reflected light fluorescence illuminator features a 6-position filter cube turret which can be rotated in either direction for user convenience and also features filter set identification markers. The integrated reflected light illuminator and high resolution AIS fluorite objectives provide unsurpassed performance and value for routine fluorescence observation. A wide variety of excitation cubes are available allowing users maximum flexibility.

## Digital Imaging Systems Make Documentation Easier Than Ever Before

Micrometrics® cameras and image analysis software with an integrated database is a user friendly tool for image archiving, measurement, annotation, advanced image processing, fluorescence image composition, multi-focus composition and spherical aberration correction.

## One Click Does It All

With Micrometrics® software the user can capture and save an image including the microscope and camera settings, specimen and patient information. Using the integrated database all of the information is linked to the image and can be recalled with one click.





# 3025 MICROSCOPE SERIES

## SPECIFICATIONS

<b>Optical System</b>	AIS Infinity optical system
<b>Viewing Bodies</b>	Siedentopf style, viewing tube inclined 30°. Standard configuration Light distribution: Binocular 100%, binocular/photo 20%/80%. For fluorescence units light distribution is 100% binocular or 100% photo. A tilting ergonomic binocular viewing head is also available.
<b>Eyepieces</b>	Extra wide field focusable 10x eyepieces with a 22 mm field of view and eyeguards. Eyepieces accept 26mm reticles.
<b>Nosepiece</b>	Quintuple inward facing with positive click stops
<b>Stage</b>	Mechanical right handed, 185 x 142mm hard coated surface area, 75 x 55mm movement range
<b>Condenser</b>	Flip top achromatic condenser, N.A. 0.90 with built-in aperture iris diaphragm
<b>Focusing Mechanism</b>	Coaxial coarse and fine focus mechanism with markings on fine focus knobs. Fine focus sensitivity 0.002mm
<b>Illumination</b>	6 volt 30 watt halogen, lamp is housed externally for Kohler illumination
<b>Filters</b>	Ø 45mm clear blue filter is standard. Optional frosted blue, green and yellow filters are available.
<b>Stand</b>	Cast alloy aluminium, Weight: 22 lbs.

## PRECONFIGURED SYSTEMS

Specification with AIS Infinity Optical System			Catalog No.	3025	3025-EPI	3025PH
<b>AIS Infinity Objectives</b>	Plan Achromat Brightfield	AIS PL 2x	25-3172-PL			
		AIS PL 4x	25-3173-PL	●		
		AIS PL 10x	25-3174-PL	●		
		AIS PL 20x	25-3178-PL			
		AIS PL 40xR	25-3175-PL	●		
		AIS PL 50xR oil	3179PL-15			
		AIS PL 100xR oil	25-3176-PL	●		
	Plan Fluorite	AIS PL F 4x	25-3173-F		●	
		AIS PL F 10x	25-3174-F		●	
		AIS PL F 20x	25-3177-F			
		AIS PL F 40xR	25-3175-F		●	
		AIS PL F 100xR oil	25-3176-F		●	
	Plan Achromat Phase	AIS PL PH10x	25-3173-PH			●
		AIS PL PH20x	25-3174-PH			●
		AIS PL PH40xR	25-3175-PH			●
		AIS PL PH100xR oil	25-3176-PH			●
<b>Eyepieces</b>	EWF10x/22 focusable with rubber eyeguards		25-3113	●	●	●
<b>Viewing Head</b>	Trinocular viewing head (Light distribution 100% binocular or 20% binocular / 80% trinocular)		25-3158	●		●
	Trinocular viewing head (Light distribution 100% binocular or 100% trinocular)		25-3158-100		●	
	Ergonomic tilting binocular		25-3155-E			
<b>Photo/Video Adapters</b>	Photo Tube		25-2000	●	●	●
	0.52x c-mount camera adapter with photo tube		2005-5			
<b>Mechanical Stage</b>	Right hand, hard coated, scratch resistant		25-3213	●	●	●
	Right hand, ceramic coated with tension control adjustments		25-3213-TA			
<b>Condenser</b>	Flip top achromatic N.A. 0.90, 2x - 100x (flip out 2x and 4x)		25-3221-FT	●	●	
	Turret phase condenser 5 position		25-3321-PH			●
	Abbe, N.A. 1.1 (4x - 100x)		25-3221			
<b>Illumination</b>	6 volt 30 watt Koehler Illumination			●	●	●
<b>Epi-Fluorescent Attachment</b>	6 position filter wheel, Lamphouse for 100w Mercury Lamp, Power Supply for Mercury Lamp, HBO 100W/2 mercury lamp, UV protection barrier		25-3231		●	
<b>Optional Accessories</b>	Multi-observation bodies from 2 to 5 viewing stations, polarizer set & darkfield					

● indicates standard accessory.

