

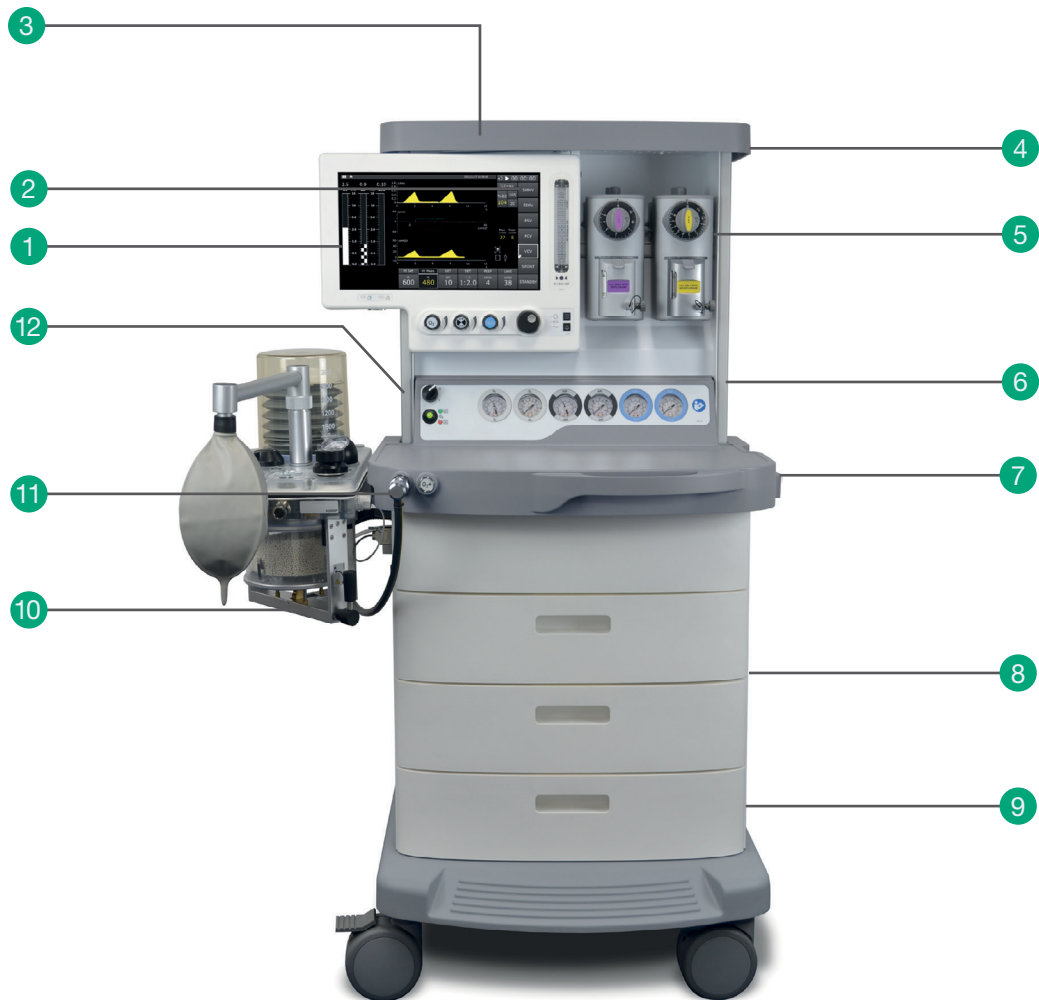
# Avante Integra SL-X Anesthesia Machine

## ANESTHESIA SOLUTIONS

- 15.6" high-definition touchscreen display
- Virtual flowmeter
- Seven ventilation modes with PEEP
- Suitable for adult, pediatric and neonates
- HIS connectivity



# Avante Integra SL-X Anesthesia Machine



## FEATURES AND OPTIONS YOU NEED

- 1 15.6" high-definition touchscreen display with intuitive user interface and virtual flow display
- 2 Seven ventilation modes with PEEP in all modes
- 3 Versatile top shelf with secure GCX™ mounting system for patient monitors
- 4 Electrical outlet options
- 5 Selectatec® compatible backbar (two station)
- 6 Up to three cylinders
- 7 Illuminated work space
- 8 GCX™ compatible aluminium uprights for additional accessory mounting
- 9 Standardised large capacity drawer units
- 10 Integrated CO2 absorber and bellows unit with heater fitted as standard
- 11 Optional backlit Auxiliary Common Gas Outlet
- 12 Optional oxygen therapy flowmeter

# Providing the ideal solution for today's busy operating room

Clinician-focused choices and benefits, including intuitive 15.6" high-definition touchscreen with virtual flow display and user-selectable waveform and respiratory loop displays



## Flow Control and Visualisation

15.6" high-definition touchscreen display provides virtual flow display, O<sub>2</sub> concentration and gas mixture.



## Enhanced Patient Safety

Accurate mechanical anti-hypoxic device, total flow display and backup O<sub>2</sub> gas delivery system.



## Waveforms and Respiratory Loops

Airway Pressure plus two user-selectable waveform or respiratory loop displays.



## Dual Flow Sensors

Inspiratory and expiratory volume measured and displayed on the screen.



## Patient Profiles

Suitable for adult, pediatric and neonatal patient profiles.



## Monitoring

Oxygen, pressure and flow monitoring with flexible GCX™ mounting for gas and patient monitors.



## Alarms

Audible and visual alarms with colour coding to highlight alarm levels.



## Electrical Power

Wide choice of territory-specific electrical power outlets.



## Battery BackUp

Provides power to the machine for up to 75 minutes, in the event of an AC mains power failure.



## Gas Supply Options

Up to three cylinder yokes and three central pipeline connections for O<sub>2</sub>, N<sub>2</sub>O and Medical Air.



## Optional Auxiliary Common Gas Outlet (ACGO)

Illuminated switch and front outlet provide visual indication of open breathing circuit.



## Active AGSS

Disposes of waste gas and prevents possible health hazards to operating room staff.



## Maintenance and After-Sales Support

Comprehensive warranty provides peace of mind and after-sales support. Additional services and warranties can be purchased to meet your particular needs.



## Standards Compliant

Fully compliant to ISO 80601-2-13 and the Restrictions of Hazardous Substances (RoHS) Directive.

### 1. Ventilation Modes

Seven ventilation modes are available (VCV, PCV, PSV, SPONT, SIMV, SMMV and Manual) with PEEP available in all modes except Manual.

### 2. CO<sub>2</sub> Absorber

A high performance absorber with a ventilator interface as standard that provides ventilator mode switching, triggered by the bag/ventilator control. The unit has a built-in heater and all the main components are autoclavable.

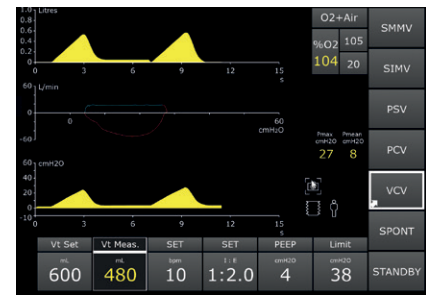
### 3. Anesthesia Vaporizers

The award winning Sigma Delta and the new Sigma EVA desflurane vaporizers offer multiple agent and filler system options to suit all clinical requirements.



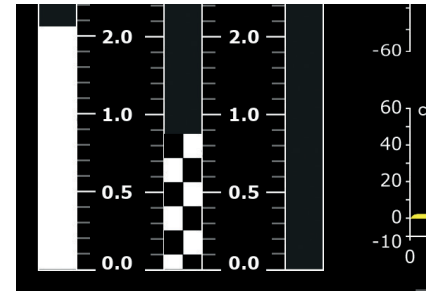
## Ventilation Modes

Seven ventilation modes are available as standard (VCV, PCV, PSV, SPONT, SIMV, SMMV and Manual) with PEEP available in all ventilation modes except Manual.



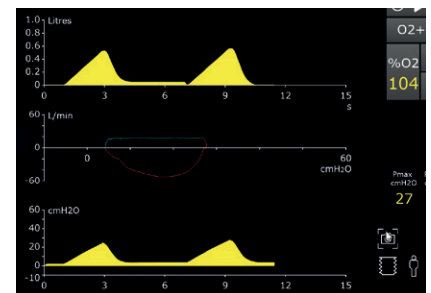
## Fresh Gas Control

Fresh gas flow is controlled using a proven conventional control system and mechanical anti-hypoxic device. Gas mixture is displayed using a colour-coded virtual flow display on the touchscreen.



## Waveform Display

Airway Pressure plus two userselectable waveform or respiratory loop displays with a choice of Flow Rate, Tidal Volume, P-V Loop, V-F Loop or P-F Loop.

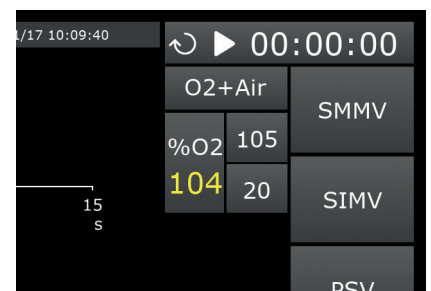


## Patient Details

Patient details can be entered via the on-screen keyboard. Automatic average weight calculations are adjusted when height and weight are changed. Compatible with HL7 hospital information system (HIS).

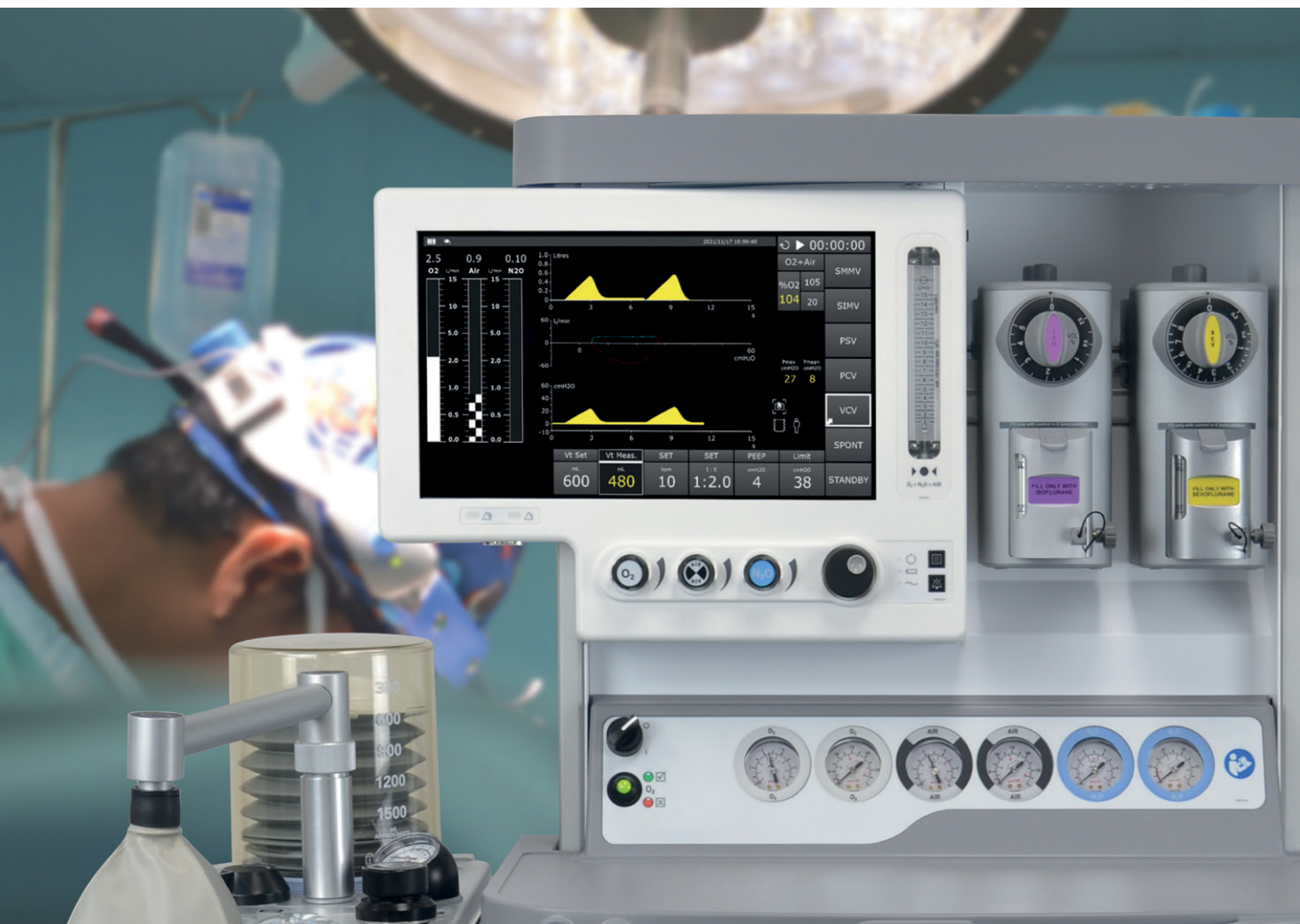
## Graphical User Interface

Clear, easy to use graphical user interface (GUI) with high-definition display of settings, and new stopwatch function.



The Integra SL-X provides PEEP in all ventilation modes, accurate control, and a virtual flow display in a familiar and easy-to-use workstation.

## Features and Benefits



Features	Benefits
Rotameters combined with a virtual flowmeter	Accurate gas delivery with measured flows
Multi-mode ventilator with seven ventilation modes	Suitable for multiple patient types and clinical cases
Integrated heater and water trap on the CO <sub>2</sub> absorber	Reduces condensation risk and improves patient comfort
Absorber CO <sub>2</sub> bypass	Can change absorbent while ventilating a patient
Selectatec back bar	Can be used with any compatible vaporizer
Mechanical anti-hypoxic device and total flow display	Enhanced patient safety
Maintenance and after-sales support	Customer peace of mind
Integrated on-screen stopwatch function	Provides accurate timekeeping during procedures
HL7 connectivity	Provides Hospital Information Systems (HIS) capability
Territory-specific power outlets	Power external devices
AGS (anaesthetic gas scavenging) system	Alleviates contamination in theatre
Improved cable and hose management	Reduces clutter and trip hazards
Oxygen therapy flowmeter	For recovery and added safety
Side mounted suction controller kit	Keeps airways clear

2596-2022-06-08

 [avantehs.com](https://avantehs.com)

2601 Stanley Gault Pkwy, Suite 101 • Louisville, KY 40223 USA  
800-477-2006 • 502-244-4444 • FAX: 502-244-0369

**Avante** | Health  
Solutions