

Avante Integra SP VSO2

Portable Anesthesia Machine

The Gold Standard in Portable Anesthesia

The Avante Integra SP VSO2 is a fully-functional, compact and portable anesthesia system in a lightweight package. The Integra SP VSO2 anesthesia system is compact enough for the smallest surgery or imaging suite, and is fully portable.

Easily transport the Integra SP VSO2 by using the retractable handle, located conveniently on top of the unit. Side-located gas ports allow clinicians to safely and efficiently set up the machine.

In keeping with Avante's commitment to quality, all Integra SP anesthesia systems include a two-year manufacturer's warranty. The Avante Integra SP VSO2 is available with a hardshell carrying case, complete with casters and a retractable handle. A convenient mobile trolley with a sturdy built-in shelf is also available.



FEATURES

- Small and compact unit ideal for office-based anesthesia
- Lightweight machine weighs only 26 pounds!
- Three gas machine (O2, N2O and Air)
- Mechanical anti-hypoxic device and air/N2O interlock
- Retractable top handle for easy transport
- Conveniently located side gas ports
- Many ventilator options available
- Selectatec®- compatible vaporizer mounting system
- Optional carrying case with retractable handle and casters
- Optional mobile trolley with shelf
- Holds 1 vaporizer
- Specifically designed to accommodate low flow
- Auxiliary O2 flowmeter port
- Recessed flush valve
- Also available with MRI-compatible Penlon Nuffield Ventilator



Over the last 3 years, I have purchased twelve DRE Integra VSO2 machines, and use them at several different anesthetizing locations. When I was looking to buy a mobile anesthesia machine, I required that it be able to deliver N2O, and the DRE Integra VSO2 was the only one that I felt comfortable with that could reliably and safely do so. With DRE's help, we had them all configured in the exact same way, so that any one of the partners can show up in any office, 'plug and play', and within a few minutes be up and working in no time.

— Dr. Marlon Michel
President, M2 Anesthesia

SPECIFICATIONS



Weight
(without vaporizer):
28 lbs (12kg)



Operating Temperature:
50 to 100°F (+10 to 38°C)



Flow Range:
Oxygen / Air / Nitrous Oxide:
0 - 10 L/min



Height: 13.8" (35cm)

Width: 19.7" (50cm)

Depth: 7.9" (20cm)



Operating Humidity:
10 - 85% R.H.
non-condensing



Operating Atmospheric Pressure Range:
28 lbs (12kg)



Cleaning:
Wipe external surfaces with dry or damp cloth. Use mild soap, or disinfectant solution if necessary.



Operating Altitude:
8000ft (2438m) maximum

Flowmeter Accuracy:
± 2.5% full scale reading

Flowmeter Construction and Dimensions:
Tubes and floats are matched, and must not be interchanged. Flowmeter tubes have antistatic coatings

Oxygen Failure Warnings:
Gas system whistle and a visual indicator (direct pressure operated)

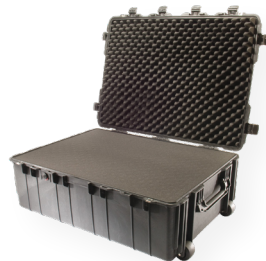
Oxygen Flush Button:
The system supplies 35 - 75 L/min when the button is fully pressed

Minimum Oxygen Concentration:
30% ± 3%
(total O2 + N2O flow)

Basal Flow - Oxygen:
100 - 200 mL/min

OPTIONAL ACCESSORIES

- > Absorber
- > Durable mobile cart
- > Hard-shell carrying case



2064-2022-05-12