

# Avante | Health Solutions



2021-2022  
CATALOG

## NEW & REFURBISHED MEDICAL EQUIPMENT

✓ ISO 13485:2016 Certified

Patient Monitors • Ultrasounds • Procedure Chairs • Surgical Tables • Ventilators  
Surgical Lighting • Anesthesia Machines • Microscopes • Infusion Pumps  
Electrosurgical Units • Defibrillators/AEDs • Suction Regulators • Gas Analyzers  
*and much more*

Order Now!

 [www.avantehs.com](http://www.avantehs.com)

 (800) 979-6142

## We're making it easier and more affordable for every medical facility to have the very best equipment, supplies, and service.

Avante Health Solutions is a one-source medical equipment solutions provider, giving healthcare systems throughout the globe access to new and refurbished capital equipment, installation, service, parts, repair and technical support.

In a time where medical facility budgets are pinched and consolidation is quickly changing the healthcare landscape, Avante offers progressive strategies from one powerful partner. Avante has brought together experienced equipment providers to give modern healthcare facilities access to comprehensive solutions for a wide range of equipment modalities: patient monitoring, ultrasound, diagnostic imaging, surgical equipment, and radiation oncology.

Avante's brand agnostic approach to equipment sourcing and service ensures that customers find the ideal equipment for their unique needs. To learn more about how Avante Health Solutions experts can maximize capital equipment performance at your facility, contact an Avante representative today.



### OUR COMMITMENT TO QUALITY

Avante offers cost-effective equipment solutions backed by our dedicated commitment to quality. It's that peace of mind that makes doing business with us different.

### Our Facilities and Processes

Each of our state-of-the-art campuses feature quality management processes that have been **ISO 13485:2016 certified**. We invest in testing equipment, staging bays, remote diagnostics, and in our quality supply chain.

### Our People

Our teams of trained and certified engineers are experts in their respective fields, and have a passion for helping you maintain the highest level of patient care at your facility.



**PAGE 4** | Dräger Fabius GS Anesthesia Machine

**PAGE 10** | Philips IntelliVue Patient Monitors



**PAGE 22** | Avante SLS 9000 Plus Surgical Lights

**PAGE 29** | Avante Delphi CF Surgical C-Arm Table



**PAGE 31** | Philips EPIQ 7 Ultrasound Machine



**PAGE 48** | Alaris 8100 Infusion Pump Module

**CALL TODAY FOR A QUOTE!**

1-800-979-6142 | [avantehs.com](http://avantehs.com)

FOLLOW, LIKE, AND CONNECT



### Contents

- 4 Anesthesia
- 8 Patient Monitors
- 13 Central Monitoring
- 14 Telemetry Transmitters
- 16 Patient Modules
- 18 Monitoring Cables & Parts
- 19 Exam Room Package
- 20 EKG Machines
- 21 Surgical Lights
- 24 Chairs & Tables
- 27 Surgery Tables
- 30 Stretchers
- 30 Hospital Beds
- 31 Ultrasounds
- 34 Fetal Transducers
- 36 Infant Care
- 37 Fetal & Maternal Monitors
- 38 Laparoscopy
- 39 Video Laryngoscopes
- 39 Microscopes
- 40 Defibrillators & AEDs
- 42 Electrosurgical Units
- 44 Suction Regulators
- 45 Gas Analyzers
- 45 Oxygen Blenders
- 46 Ventilators
- 48 Infusion Pumps
- 50 Aspirators
- 51 Warmers
- 52 Autoclaves
- 52 Stainless Steel
- 53 Medical Supplies
- 54 Imaging Equipment
- 55 Oncology Equipment





## Avante Integra SL

Electronic flow display and traditional flowmeters.

Fully integrated absorber ventilator with 6 ventilation modes.

Illuminated work space, large capacity drawer units and top shelf with secure GCX mounting system for patient monitors.

Fully compliant to ISO 80601-2-13 and RoHS standards.

### Intuitive design in a compact footprint

Web ID 1573

FIND IT FAST at [www.avantehs.com](http://www.avantehs.com) when you search by Web ID number



< Patient monitor sold separately

## Dräger Fabius GS

High-contrast color monitor with Dräger user interface for easy and familiar operation.

All major ventilation modes.

New, highly maneuverable trolley with central brake.

LED workplace illumination, spacious design, and large drawers.

### Advanced ventilation technology with reliable and proven breathing system components

Web ID 939



Premium Model Available



## Dräger Fabius Tiro

Intelligent safety features for enhanced patient protection.

Complete with advanced features such as fresh gas decoupling, which maintains constant tidal volumes regardless of fresh gas flow changes.

### High-quality ventilation in small spaces

Web ID 1442

**Open-Platform Architecture**  
can easily integrate into overall workflow



## Avante Integra SP VSO2

Small compact unit with retractable top handle for easy transport.

3 gases (O<sub>2</sub>, N<sub>2</sub>O and air).

2-year manufacturer's warranty.

Mechanical Anti-Hypoxic Device and Air/N<sub>2</sub>O interlock.

Conveniently located side gas ports.

Selectatec®-compatible vaporizer mounting system.

### Compact system is great for office-based anesthesia

Web ID 7



### Optional Accessories



Available with an optional absorber



Available with a hard-shell carrying case, making the system easier to transport.



Available with a durable mobile cart.

### New & Recalibrated Vaporizers

**Penlon Sigma Delta** (new) delivers accurate concentrations under many conditions, even at low flow.

**Recalibrated options** include Datex-Ohmeda Tec Series, Dräger Vapor 2000, 19.1 and 19.3.

Web ID 22

## Penlon Sigma Delta



### Clean and Calibrate your vaporizers with Avante!

TEC 3, TEC 4, TEC 5, Dräger 19.1, Ohio and Penlon.

Also have your TEC 3 and TEC 4 vaporizers converted from Halothane to Isoflurane.

## ANESTHESIA PARTS AND SERVICE

Certified Biomedical Equipment Technicians  
Trained, Educated, Experienced

Factory-trained with Certification to Service Anesthesia Systems from GE/Datex-Ohmeda, Penlon, Dräger, Avante, and more.





## Dräger Apollo

E-Vent plus servo controlled high-speed piston ventilator provides performance previously only seen in the ICU.

Designed to support the user in low and minimal flow settings.

Simple, straightforward start-up reduces the burden on the staff and provides complete information on device status.

### Easy-to-use anesthesia system with user-friendly ergonomics

Web ID 1355

**Open-Platform Architecture**  
can easily integrate into overall workflow



## GE Avance S5

Complete patient monitoring capabilities: respiratory gas, hemodynamic and adequacy of anesthesia

Electronic gas mixer with pneumatic back-up control.

Advanced Breathing System enables easy on/off capability and reduces maintenance time; easy disassembly and cleaning.

Simple, flexible menu controls minimize the need for training and reduce complexity during critical and non-critical events.

Sophisticated ventilation with expanded clinical capabilities for spontaneously breathing patients.

Web ID 1432



## GE Avance CS<sup>2</sup>

Moveable 15" touch ventilator display screen with CARESCAPE™ inspired user interface for the unified Carestation user experience.

ecoFLOW provides information that may help clinicians maintain their desired inspired oxygen concentration during low and minimum flow anesthesia.

User configurable 'Quick Picks' for rapid selection of FiO<sub>2</sub> and total flow combinations.

### Sleek user-interface enabled by a beautiful 15-inch touchscreen display

Web ID 17209



## GE Aisys

Ventilation, vaporization and gas delivery are electronically controlled and monitored.

Data capabilities enable digital interfacing of patient and Carestation information.

Easily upgradable to enhance the functionality, add support, and enhance data management.

Provides digital feedback on ventilation, drug levels, patient status, and fresh gas usage.

Electronic protocols provide data continuity.

### Precise digital controls ideal for low flow anesthesia

Web ID 1433



## GE Aisys CS<sup>2</sup>

Displays breath-by-breath patient spirometry: airway pressure flow, volume, compliance, PEEP, and airway resistance.

Wide range of ventilation modes offered: VCV, PCV, PSVPro, PCV-VG, SIMV, VCV, SIMV PCV, CPAP+PSV, and SIMV PCV-VG.

Web ID 11964



## GE Aestiva 5

Optimized for low flow anesthesia and reduced agent consumption.

Open systems architecture and lower overall height.

Web ID 771



## GE Aespire S5

Enhanced integration for GE / Datex-Ohmeda monitors.

Lightweight and compact for seamless maneuvering.

Optional integrated auxiliary O<sub>2</sub> flowmeter and suction control.

Available with the advanced 7900 SmartVent — includes sophisticated ventilation capabilities, helping you meet the needs of neonates, trauma, compromised and routine patients

### Modern economical anesthesia

Web ID 1074





## Avante Waveline Touch

Bright, easy-to-use, touchscreen display with up to 8 adjustable waveforms.

Optional capnography and anesthesia gas.

Wireless and central station compatible. USB and network access to software and data.

### Multi-lead ECG monitoring with optional EtCO<sub>2</sub>

Web ID 1229

Parameters: ECG, Pulse Oximetry, Non-Invasive Blood Pressure, Heart Rate, Temperature, Respiration.

Optional: EtCO<sub>2</sub>, Dual Invasive Blood Pressures, Anesthesia Gas, 5-agent Analysis, and FIO<sub>2</sub>.



Vibrant 12.1" user-friendly touchscreen for seamless operation

## Avante Waveline EZ

Transportable monitor with an 8" touchscreen.

Long-lasting battery back-up (up to 4 hours).

Optional CO<sub>2</sub> monitoring.

### Capnography available

Web ID 1230

Parameters: ECG, Pulse Oximetry, Non-Invasive Blood Pressure, Heart Rate, Temperature, Respiration.

Optional: EtCO<sub>2</sub> and Printer.



Compact design convenient for mobile monitoring

## Avante Waveline EZ MAX

10.4" Color TFT LCD touchscreen monitor.

Arrhythmia, S-T Analysis, OxyCRG, large font display.

### Non-proprietary CO<sub>2</sub> technology saves you consumable expenses

Web ID 1624

Parameters: ECG, Pulse Oximetry, Non-Invasive Blood Pressure, Heart Rate, Temperature, Respiration.

Optional: Nellcor Oximax™ SpO<sub>2</sub>, 2-IBP, ICP, C.O. Respiration CO<sub>2</sub> (Mainstream and Sidestream)



## Avante Waveline Pro

Large (15"), touchscreen with high-resolution flat panel display.

Optional Integrated Dräger Anesthesia Gas Bench expands measurement capabilities.

Wireless and central station compatible. USB and network access to software and data.

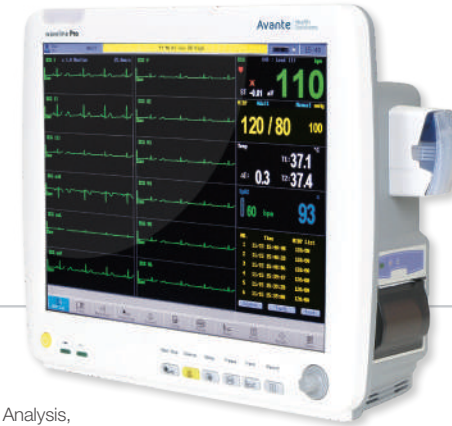
Displays as many as 8 waveforms.

### Touchscreen O.R. monitor available with EtCO<sub>2</sub>, anesthesia gas and 5-agent analysis

Web ID 1077

Parameters: 3-lead or 5-lead ECG with arrhythmia detection, Non-Invasive Blood Pressure, motion tolerant SpO<sub>2</sub>, Temperature, and Respiration rate.

Optional: EtCO<sub>2</sub>, Dual Invasive Blood Pressures, Anesthesia Gas, 5-agent Analysis, 5-agent ID and FIO<sub>2</sub>



Available with a built-in anesthetic agent bench!

## GE Carescape B650

Customize views from eight to 14 waveforms with overlays and insets to suit the caregivers' and patients' needs.

Combination monitoring with Apex Pro telemetry for patient mobility.

CARESCAPE Patient Data Module offers seamless patient data capture in HIS/EMR for continuity of care.

Transition patients easily from high to low acuity.

### Combines advanced data communication with smart design

Web ID 1640



Refurbished by Avante

## Datex-Ohmeda CardiCap 5

Small footprint bedside monitor with large 10.4" active matrix color display.

4 user-configurable modes for care-specific preconfigurations.

Waveform snapshot to store and recall waveform samples for later analysis.

Built-in back-up battery to handle sudden power down situations.

Web ID 960





## GE Dash 5000

Advanced clinical parameters including 12SL™ for simultaneous ECG monitoring, GE EK-Pro™ for multi-lead arrhythmia analysis, ICG, mainstream and sidestream CO<sub>2</sub> and GE DINAMAP® NIBP with SuperSTAT™.

Networking options include wired and wireless.

Up to 7 waveforms and up to 4 invasive pressures.

High resolution CRG trends for NICU monitoring.

**Light weight, durable, and ergonomic design**

Web ID 1374



## Philips IntelliVue M3002 X2

Redesigned user interface to improve visibility of patient data, for ease of use and software compatibility.

Dynamic Wave area features waves that automatically adjust in size depending on the number of waves configured.

Designed to be light, small, and rugged compared with critical care transport monitors in its peer group.

**Designed for clear decision making**

Web ID 1513



10.8V Lithium Ion Battery Pack



X2 Front Display LCD Screen & Bezel Assembly



Philips M8023A X2 MMS Charger with Interface Cable

Philips Monitor Parts

## Philips IntelliVue MX100 X3

**Offers a broad set of basic and advanced clinical measurements**

Each screen can be customized to present exactly what you want to see, the way you want to see it.

Helps to streamline workflow and boost efficiency by reducing the number of steps to prepare patients for transport.

Web ID 14375



## Philips IntelliVue MX450

Optimized for high-demand applications: ED, step-down, conscious sedation, and NICU.

Ambient light sensor automatically adjusts screen brightness to maintain readability in nearly any lighting environment.

**Comprehensive patient monitoring in a compact, easy-to-use design**

Web ID 14385



## Philips IntelliVue MP5

Provides a clear connection to your patients, delivering IntelliVue monitoring power and functionality in a compact, rugged housing to match the demands of a wide range of care environments in and out of the hospital.

Wired and wireless networking for continuous connection, no matter where patients are located on the network.

Web ID 1512

## Philips IntelliVue MP50

Highly flexible screen configurations.

Extensive clinical measurements menu.

Built-in clinical support tools such as Event Surveillance, conventional diagnostic 12-lead ECG, and arrhythmia analysis.

**High-performance monitoring for flexible care situations**

Web ID 1389



## Philips IntelliVue MP70

Smart prioritization of patient information, and allows for customized viewing options.

Built-in clinical support tools such as Event Surveillance, conventional diagnostic 12-lead ECG, and multi-lead arrhythmia.

Touchscreen operation makes many functions accessible through simple, one-touch commands.

Web ID 1510





## Avante Echo Series

Cost-effective vital signs monitor.

5.7" high resolution display clearly presents vital sign information.

Optional thermometer for obtaining temperature in approximately 15 seconds.

Available with your choice of Pulse Oximetry, Non-invasive Blood Pressure and Covidien Quick Temp. Wireless Capable.

**Ultra-lightweight and portable with a 10-hour battery**

Web ID 1380

Suitable for adult, pediatric and neonatal patients

## GE Carescape B450

Standard Parameters: ECG, SpO2, NIBP, InvBP, TEMP, Cardiac output

Especially designed for intra-hospital transport.

Web ID 14372



## GE Procure B40

12.1" color display and one-button access to commonly used features.

Modular and configurable with advanced parameters.

Web ID 11706



## Avante Echo CO<sub>2</sub>

Respironics Loflo sidestream or CAPNOSTAT 5 EtCO<sub>2</sub> mainstream measurement.

Bi-directional communications with central station by wired or wireless network.

Built-in rechargeable Lithium-ion battery for 10 hours continuous operation.

Lightweight, portable design and user-friendly interface.

Flexible configurations to meet different clinical needs.

Real-time parameters measurement display with trend table for easy reviewing.

Standard SpO<sub>2</sub>.

PR measurement.

5.7" high resolution display for easy reading

**Effective capnography monitoring**

Web ID 1382



CO<sub>2</sub> Monitor • Hand-held • Bedside

## Avante Envoy Plus

**The state-of-the-art Avante Envoy Plus allows for increased efficiency and better quality**

The Avante Envoy Plus brings you a comprehensive central monitoring solution. It offers seamless remote monitoring management from transportation, hospitalization, and intensive care to anesthesia care and beyond, bringing easy access to health care providers with well-organized monitoring technology.

Web ID 13862



ECG Transmitters



Avante Echo



Avante Waveline EZ MAX

**The Envoy Plus integrates with ECG transmitters and Avante patient monitors**

Up to 240 hours of trend data and storage review.

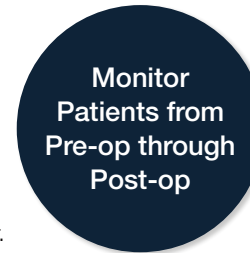
Waveform storage and review: Up to 240 hours of waveform data per monitor/device; default 96 hours.

Transfer waveforms, alarms, parameters, etc.

12-lead ECG display.

Storage of patient's history data.

NIBP measurement storage and review: Stores up to 720 NIBP measurements per monitor.



Simultaneously monitor up to 64 patients



ECG Transmitters • Small, portable and lightweight

3/5-lead wires

Bi-directional nurse call function

Automatic Lead Identification

IPX7 Waterproof

Operates on one AA battery

Built-in Wi-Fi module

One source to maximize capital equipment performance **Avante** Health Solutions



## Philips MX40

Allows for comfortable monitoring on the go

Wearable monitor gives patients the freedom of movement.

Features a unique cable connector designed to reduce collection of soil and liquids, and a case design that withstands high level disinfectants, including periodic sterilization.

Alarm management based on your clinical protocols.

Web ID 17184



## Philips M4841A

Smart hopping technology locates the strongest available signal wherever the patient is located.

Integrated rechargeable Lithium-ion battery.

Out-of-range audible alert.

Wireless telemetry as a parameter

Web ID 1473



## Philips M2601B

FAST-SpO<sub>2</sub> (Fourier Artifact Suppression Technology) for improved motion artifact rejection and low-perfusion performance.

Clinician-selectable Standard or EASI leads in same transmitter, at the bedside.

Powered by two AA Alkaline batteries.

Freedom for patients and flexibility for clinicians with impressive wireless coverage

Web ID 1436



**Philips IntelliVue M4841A**  
TRx+ Telemetry Transmitter S01 Replacement Case Assembly



**Philips MX40**  
Wearable Patient Monitor AA Battery Harness Holder Tray



Philips Telemetry Parts



## GE ApexPro CH

Uses the GE EK-Pro clinical algorithm, which processes and analyzes four independent, simultaneous ECG leads - meeting and exceeding stringent AHA guidelines.

Supports advanced atrial fibrillation detection and alarming.

Capable of monitoring two V-leads on each patient.

Web ID 17153



GE Telemetry Parts



**GE ApexPro CH**  
Telemetry Transmitter Case with Overlays & LED Flex Board



## GE ApexPro

Allows each transmitter to monitor only the parameters each patient requires.

Continuous monitoring of ECG and SpO<sub>2</sub> and episodic monitoring of NIBP and temperature allow caregivers to tailor monitoring according to the patient's acuity.

Capable of monitoring two V-leads on each patient.

Web ID 17154



## GE ApexPro FH

Offers an expansive and scalable telemetry option designed to support large healthcare enterprises.

Works seamlessly with CARESCAPE™ Enterprise Access. This powerful combination provides a coverage area of up to 1.2 million square feet, enabling you to monitor up to 640 patients across the enterprise.

Capable of monitoring two V-leads on each patient.

Pace detection across two vectors improves the system's ability to see and recognize a wide variety of pacemakers.

Telemetry for large healthcare enterprises

Web ID 17155







## Philips M3001A Option A01C06

Nellcor OxiMax SpO<sub>2</sub> and IBP/Temperature

Web ID 14423



### Option A01C18

Philips FAST SpO<sub>2</sub>, IBP/temperature, and 12 lead ECG

Web ID 14425



### Option AO2C06

Nellcor OxiMax SpO<sub>2</sub> and IBP/Temperature

Web ID 14427



### Option AO3C06

Masimo SET SpO<sub>2</sub> and IBP/Temperature

Web ID 14431



Philips M3001A  
NiBP Pump



Philips M3001A  
Main Board

Philips Module Parts



## Philips M3015A

Wide variety of Microstream accessories is available for intubated and non-intubated patients.

Provides a lightweight and rugged package that can be mounted to the patient monitor, or positioned close to the patient to reduce cable.

Microstream CO<sub>2</sub> is a high performance Sidestream CO<sub>2</sub> measurement with a very low sample flow rate

**CO<sub>2</sub> Module designed for adult, pediatric, and neonatal patients**

Web ID 14447



## GE Patient Data Module - PDM

Multi-Measurement Server provides real time waveform and numeric values for the measurements most often used in hospital environments – ECG, respiration, Nellcor SpO<sub>2</sub>, non-invasive blood pressure, and a port for invasive pressure or temperature.

Stores patient demographics, and up to eight hours of patient trend data.

One port for conventional mainstream CO<sub>2</sub> measurement.

**High-acuity mobile patient monitoring**

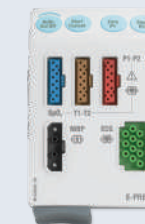
Web ID 17203



## GE Datex-Ohmeda E-PSM

SpO<sub>2</sub>, ECG, NIBP, and Temperature

Web ID 17202



## GE Datex-Ohmeda E-PRESTN

GE E-PRESTN Datex-Ohmeda module comes with ECG up to 12 leads, 2 IBP Invasive Blood Pressure, NO SPO<sub>2</sub>, NIBP, RESP and Temperature.

Web ID 17201



## Philips M1034A

Using Aspect Medical Systems' XP platform technology. It provides depth of consciousness and sedation monitoring for use in the OR, ICU, and other clinical settings.

Web ID 17193



### Also check out:



1. Philips M1006 (A or B) Module with Option to Add Pressure Module
2. Philips M1029A Temperature Module
3. Philips M1012A Cardio Output Module
4. Philips M1032A Vuelink Interface Module

[avantehs.com/monitoring/accessories](http://avantehs.com/monitoring/accessories)

## Introducing an easier way to shop for cables.

We are a trusted partner to today's leading healthcare providers. We maximize the uptime of your monitors with the right parts, at the right price, for fast solutions to improve patient care. Shop by Brand, Patient Type or Compatible Monitors & Modules.






-  OEM Quality
-  Same Day Handling
-  12 Month Warranty
-  Free Priority Shipping

- *SpO<sub>2</sub> Cables*
- *ECG Cables*
- *Temperature Cables*
- *NiBP Cuffs*
- *O<sub>2</sub> Sensors*



[avantehs.com/monitoring/parts](http://avantehs.com/monitoring/parts)

## Parts Purchasing Simplified

-  Certified OEM Replacement Parts
-  Volume Discounts
-  ISO 13485:2016 / 9001:2015 Certified
-  10% Off Your First Order
-  Free Shipping on Orders Over \$100

### PARTS FOR

*Patient Monitors • Telemetry • Modules  
Fetal Transducers • Infusion Pumps*



ONE FURNISHED ROOM • ONE AFFORDABLE PRICE • ONE GREAT DEAL

## Avante ONE Room

Practice Exam Room Package

**Four great products, packaged at one affordable price**

Furnish an entire exam room with contemporary style in one convenient package. The One Room provides a modern base and wall cabinet combination, a versatile exam table, comfortable pneumatic stool and side chair, all color coordinated and ready to go.

There is no better exam room package of equipment at a better price point than the One Room. The equipment alone, backed by a 5-year warranty, is a big deal. The affordable price makes it a great one.

Web ID 1620

Colors available:  
Sapphire, Cream, and Black  
Made in the USA



### Avante Patient Exam Table

Versatile and durable with multi-use features. Perfect for the private practice physician or clinic.



### Avante Cabinet Combo

Features stainless steel sink, all laminate construction, soft close hinges and drawers that hold up to 75 lbs.



### Avante 5-Leg Pneumatic Stool

Easily adjustable; 15" diameter, padded seat and dual wheel casters for durable performance.



### Avante Premium Side Chair

Features a durable, metal, powder-coated frame and comfortable padded seat and backrest.

### Optional Equipment



Avante Vista LED Examination Light



Avante Echo CO<sub>2</sub> Vital Signs Monitor



Avante WS350 Wall Mount Diagnostic System



## Avante True ECG Advance

- 12.1" color touchscreen.
- Real-time waveform freezing.
- Automatic measurement and interpretation tested with CSE database.
- Alphanumeric keyboard and one-touch operation.
- 200 ECGs in internal memory.
- Review 120 seconds of ECG waveform.

### Touchscreen 12-channel ECG

Web ID 1227



Available with optional cart

Optional stress testing can support treadmills and bicycles



## Avante True 12T

- 8.4" color touchscreen.
- Preview report for both real-time EKG printing and file storage.
- Optional EKG printing styles, printing speed, sensitivity, and filtered waveforms for less repeat examinations.



Compact, lightweight design with carrying handle

### Excellent cost performance with large touchscreen display

Web ID 1236

## Philips TC70

- 15" color touchscreen (fast and easy).
- Philips DXL 16-Lead ECG Algorithm provides industry standard diagnostic capabilities for a wide patient population.



### State-of-the-art performance

Web ID 1662

Refurbished by Avante



## Avante Velocity Pro EKG

- Comprehensive software with multiple applications.
- Multi-user permission configuration.
- Auto arrhythmia detection.
- Optional stress test function.
- 30s-360s HRV analysis.
- Compatible with Windows 8 and 10.

### PC-based 12-channel ECG system

Web ID 1199

INSTALL the software  
CONNECT the Velocity EKG  
MEASURE ECGs on your PC

Visit [avantehs.com](http://avantehs.com) for complete hardware requirements.



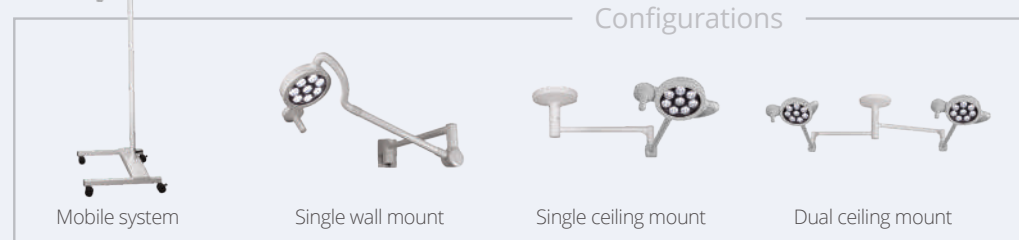
Provides low, economical energy consumption

## Avante Vista LED

- Maximum output rated at 50,000 Lux.
- 4,300° K bright white illumination.
- Life rating of 50,000 hours.
- 2-stage dimming.
- Compact head design with smooth arm articulation.

### Bright illumination at an affordable price

Web ID 1425



## Avante Vista Flex LED

- Cost-saving, energy-efficient LED bulb produces up to 50,000 hours of illumination.
- Provides a color temperature of 5,300° K.
- Light produces 70,000 Lux at an 8 inch working distance.
- Available in a variety of mounting options including mobile stand, wall mount or table mount.

### Versatile light with maximum positioning capabilities

Web ID 11911



## Avante SLS 2500 LED

- Shadowless lamps provide color temperature close to natural sunlight with 3,500 ~ 5,000° K.
- 60,000 lux output at 1 meter.
- Light and strong nova alloy arm allows easy and convenient positioning.

Web ID 1574



## Avante Vista PRO 3 LED

- Alternate between 3 preset color temperatures: 4,400°, 3,800°, and 3,000° Kelvin.
- 40,000 lux output at 0.5 meters.

Web ID 1629





## Avante SLS 9000 Plus

Maximum output rated at 140,000 Lux.

Rated for 50,000 hours of LED life.

Expertly engineered design makes it easy to position and adjust light heads for any surgical procedure.

LCD touchscreen operation measures illumination intensity, color temperature and Chromogenic index.

### Bright, consistent illumination

Web ID 11908

Available as a single or dual head ceiling mount

## Avante Maxx Luxx LED 160

LCD touchscreen for easily adjustable output.

Cool output LED light source.

Built to last at a rated 50,000 hours.

160,000 lux output (14,800 foot candles).

Adjustable focusing and CRI.

Adjustable color temperature for optimizing human tissue colors.

Available in dual ceiling, single, and wall configuration.

Web ID 1615



## Avante Maxx Luxx LED

Highly efficient surgery lighting system.

Extremely cool output – lowest possible heat.

Superb color temperature of 4,300° Kelvin.

Extremely long life at a rated 50,000 hours.

### Maximum brightness with extremely cool output for 50,000 hours

Web ID 1522



#### Configurations



Single ceiling mount



Dual ceiling mount



Monitor/Camera combination

## Avante Vision LED

Produces unsurpassed illumination with economical energy consumption.

50,000-hour rated LED life.

100,000 lux output at 1 meter.

4,300° Kelvin color temperature and color rendering index of 97.

5-stage dimming and on/off switch on the patented sterilizable handle.

Large diameter LED array with exceptional shadow control.

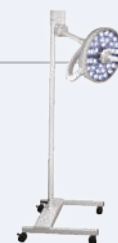
### Provides unsurpassed longevity and flexibility

Web ID 1354



Efficient LED lights provide low heat

#### Configurations



Mobile system



Single wall mount



Single ceiling mount



Dual ceiling mount



## Avante SLS 9000

Cost efficient surgery lighting system.

Cool output LED light source.

LCD touch screen operation measures illumination intensity, color temperature and Chromogenic index.

### Shadowless light with a 50,000 hour rated LED life

Web ID 1556

#### Configurations



Mobile system



Single ceiling mount



Dual ceiling mount

Sleek Chair with a Small Footprint



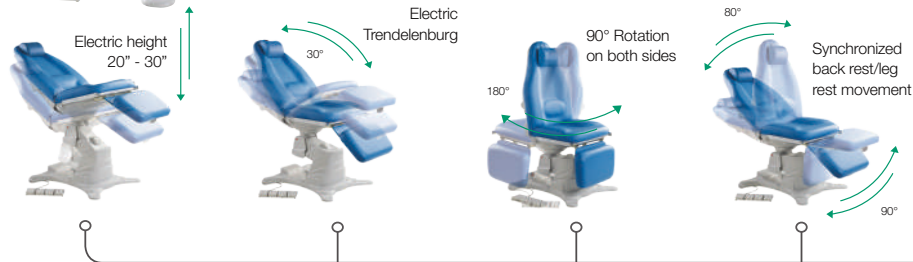
## Avante Milano E20

Power procedure chair naturally adapts to almost every physician, patient, procedure and environment

Comfortable for both the operator and patient: the Milano E20 is wider than traditional procedure chairs and lowers to 20.5", helping patients with mobility difficulties get on and off the chair.

Foot pedal and handset remote adjusts the height, back, Trendelenburg and level positioning with 4 actuators and includes an automatic reset control.

Web ID 1428



Multiple color options available



## Avante Milano T50

A universal power procedure table with fully-electric multifunctionality. Includes 4 actuators and standard foot pedal control.

The electronic control box and the actuators are versatile and easy to service. Featuring an automatic reset switch that returns the table to its starting position.

ABS coated steel frame gives the table a smooth finish while protecting the inner table components.

Designed for Dermatology, Oral, Plastic & Cosmetic Surgery, OB/GYN, ENT, and General Procedures

Web ID 1429

## Avante Milano D20

Articulating headrest can be adjusted for a variety of procedures.

Ideal for dental procedures, implantology, orthodontics, ENT, facial procedures, examinations, diagnostics and minor surgeries.

4 Independent Electronic Movements: Height, Backrest, Leg Rest and Seat Rest.

Convenient automatic reset control returns chair to its original position.

Wheeled base for moving the chair throughout your facility.

A highly-adjustable, affordable chair for modern practices

Web ID 11721



## Avante Milano OB20

Full electric operation OB/GYN Procedure Chair

Simple, automatic operation with 3 independent movements: height, backrest and Trendelenburg.

20" minimum height ensures easy access for the patient; 40" maximum height ensures optimum position for the specialist.

90° rotation to both sides and adjustable headrest.

Web ID 1562



## Avante Milano P20

Feature rich, stylish and affordable Podiatry Chair

Leg supports swivel independently up to 50°.

Foot pedal adjusts the 3 electric movements: height, backrest, and seat tilt.

30° Partial Trendelenburg positioning.

Web ID 1617



## Avante Meridian

Ergonomically designed seat section and back section are designed for patient comfort.

Seat section features pelvic tilt for enhanced positioning capabilities.

Foot stirrups angle can be positioned for each patient: 15°, 30°, 45°.

Chair lowers to 18 inches to facilitate the safe transfer of patients with mobility concerns.

Extendable, padded foot rest.

Adjustable height exam table designed for easy patient transfer

Web ID 11959





## Avante Milano H50

Ideal for: cosmetics, hair transplantation, ophthalmology, any lengthy outpatient procedure.

Plush mattress provides hours of breathable comfort for long procedures.

4 Independent Electronic Movements: height, backrest, leg rest, Trendelenburg.

1 Synchronized Electronic Movement: backrest and leg rest.

1 Manual Movement: headrest adjustment and removal.

Automatic reset control returns chair to original position.

**Superior comfort for extended office procedures**

Web ID 1637



## Avante Patient Exam Table

Durable vinyl upholstery over 2-inch firm, supportive foam padding.

Patient area measures 27 inches in width for patient comfort.

Air-spring adjustable backrest allows clinicians to easily adjust the table without back strain.

Coated, two position adjustable stirrups can be quickly pulled out or tucked away.

Padded, pull-out leg rest on steel track.

Large storage compartment with one shelf is accessible from both sides.

**Designed for comfort, economy, overall functionality, and storage**

Web ID 1246



## Oakworks CFPM400

4-movement C-Arm Table.

Low height for patient transfers to max height. C-Arm mobility requirements for full lateral imaging.

Trendelenburg tilt +15/-12°

Web ID 933



## Midmark 222 & 223

Barrier-free high-low power exam table.

Hideaway stirrups that lock in one of four lateral positions.

Low and high table positioning.

Web ID 472



## Avante Torino 550

**Multi-purpose positioning capabilities**

Longitudinal slide up to 13.78" for easy C-arm access.

Table weight load capacity rated at 550 lbs.

Powered or manual solid leg rest.

Adjustable height from 28" to 40" for good access to the operative field.

Table movements include: Trendelenburg, reverse Trendelenburg, leg and back plate adjustment and lateral tilt.

Large casters and convenient braking system for easy and convenient maneuvering throughout any surgical facility.

Battery backup for continued use in the event of a power loss.

Web ID 11867



**Standard Accessories:**

- Kidney bridge
- Shoulder support
- Arm support
- Long fixing clamps
- Leg and foot supports



Memory padding is waterproof and antistatic

## Avante Torino Max

**Premium table with expanded weight capacity of 1,000 lbs**

Designed to suit a variety of procedures, including X-ray and C-arm use.

Features flex and reflex positioning, and a total weight capacity of 1,000 pounds.

Self-leveling floor locks.

Large casters for easy and convenient maneuvering throughout any surgical facility.

Remote lockout ensures table is secure before positioning the patient.

Onboard auxiliary control panel.

Web ID 12263



**Included Accessories:**

- Leg support
- Arm support
- Shoulder support
- Body support
- Anesthetic screen
- Socket clamp
- Accessory clamps
- Hand remote



## Steris 4085

4-section tabletop contours to virtually every patient posture.

Removable leg section provides unrestricted perineal access.

Powered, radiolucent kidney elevator for lateral procedures.

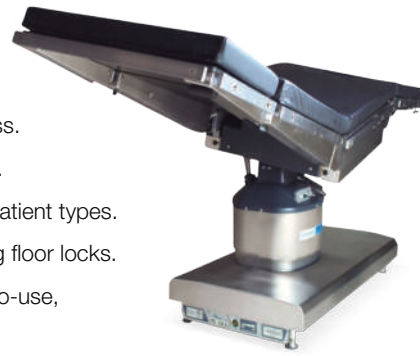
Generous height and weight ranges accommodate many patient types.

Compensates for uneven OR floors with unique self-leveling floor locks.

Facilitates quick and safe patient positioning with an easy-to-use, easy-to-read hand control.

**Provides outstanding access for C-arm**

Web ID 1363



## Steris Amsco 3085 SP

Safely raise and lower larger patients in both normal and reverse orientations.

Unprecedented versatility for all surgical specialties.

Designed for flexibility in patient positioning.

Exceptional image amplification (IA) coverage.

**Durable, flexible surgery tables support up to 1,000 lbs**

Web ID 801



## Steris SurgiGraphic 6000

83" of full unobstructed viewing for maximum imaging capabilities.

Table auto corrects deflection caused by patient weight.

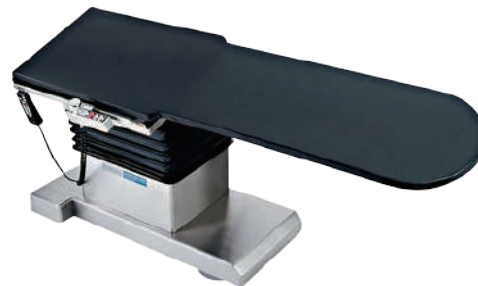
Advanced locking mechanism has eight points of contact for critical stability.

Smooth longitudinal and lateral float.

Patient Capacity 500 lbs.

**Enables radiology-quality images for minimally invasive procedures**

Web ID 1675



## Avante Delphi CF

**C-Arm and Vascular Table with Floating Top Movement**

Easy-to-use, 5-movement C-arm table with high-speed actuators.

Rapid positioning via the following table motions: height, lateral tilt, Trendelenburg, longitudinal travel, lateral travel.

Carbon fiber table allows clinicians to get high-quality, clear images with low X-ray doses.

Micromotors ensure quick, smooth, and balanced table movements.

Maximum patient weight of 440 pounds.

*Compatible with a variety of popular C-arm systems from industry-leading brands.*

Web ID 11943



## Skytron Hercules 6701

1,000-lb. articulate capacity and 1,200 lb. lift

Adjustable height from 23 to 41 inches.

**Designed for general surgery and bariatric patients**

Web ID 1384



## Skytron Hercules 6702

1,200 lb lift and 1,000 lb articulation weight capacity.

210° rotation offers superior imaging access at both the head and foot end of the table.

Removable back and leg sections for quick accessory attachment and positioning.

Adjustable table height from 23 5/8 to 41 1/2 inches.

30° lateral tilt.

30° Trendelenburg and reverse Trendelenburg.

Power beach chair positioner for one-touch set-up.

Web ID 17207



## Avante Millennium 5

- Backrest lifting controlled by oil hydraulics.
- Knee-rest lifting controlled by adjustable crank.
- Central braking system with steering function.
- Steel bed frame with powder coating.
- 3" high density PU foam mattress.
- Collapsible side rails on both sides that fold manually.
- 8" steering wheel central brake on 4 casters.
- Collapsible side rails on both sides that fold manually.
- Base cover made of ABS plastic with space for an oxygen bottle and emergency devices.



**Durable patient stretcher available with a fifth wheel system for improved steering**

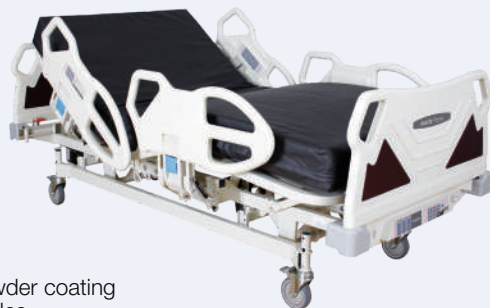
Web ID 1331

2 integrated I.V. poles



## Avante Premio E250

- Back up battery.
- Side rail controls.
- 5 functions; including CPR function with reset function.
- Locking controls prevent unexpected bed movements.
- Safe and firm construction from steel with powder coating and platform of ABS plastic with ventilation holes.



**The perfect solution for hospitals, surgery centers and teaching facilities**

Web ID 1516



**Hill-Rom Affinity II & III**

Web ID 1114



**Hill-Rom Total Care**

Web ID 1117



## Philips Epiq 7

xMATRIX is the most leading-edge, versatile ultrasound transducer technology.

Q-App quantification applications.

nSIGHT Imaging strengthens the power of PureWave to image technically difficult patients.

The Mitral Valve Navigator: designed to take a Live 3D volume of the mitral valve and turn it into an easy-to-interpret model in eight guided steps.

**An uncompromised level of clinical performance**

Web ID 11903



## Philips Affiniti 70

S5-1 transducer with exclusive Purewave crystal technology provides striking 2D clarity and color sensitivity.

Color-flow mapping: 1

X3-1 with xMatrix array technology incorporates the processing power of 150 computer boards for real-time 3D volume rendered imaging

xMatrix transducer technology incorporates exclusive micro-beamforming circuitry designed to support up to 3,000 individual active elements.

**A powerful combination of performance and workflow for quick, confident diagnosis**

Web ID 11956



## GE Logiq S8

Diagnostic ultrasound with Doppler physics and instrumentation.

B-Flow, Elastography, Multi-modality Query Retrieve.

Raw digital data signal processing, storage and manipulation.

Scan Assistant techniques and program development.

Advanced technologies, i.e. High definition Speckle Reduction Imaging (SRI-HD), CrossXBeam\*, Coded Harmonics Imaging and LOGIQView.

**Packed with powerful, established technologies that deliver high quality imaging**

Web ID 14366





## GE Logiq E9

19" high resolution LCD monitor.

CrossXBeam - Combines several images from different angles into a single, real-time image that allows for improved border definition and high contrast resolution.

Coded Harmonic Imaging - Improves near-field resolution for clearer small parts imaging and for far field penetration

Coded Contrast Imaging - Enhances the view of the Fallopian tubes vs. other tissue

**Extraordinary image quality in all applications across all body types**

Web ID 12680



## GE Voluson E8

Achieve a new standard of color Doppler with Radiantflow — delivering easy, fast visualization of even the tiniest of vessels.

Expand the range of visible blood flow to include low velocities with SlowflowHD™ to visualize blood perfusion in very small vessels.

Easily obtain volume images with unprecedented depth and clarity using the HDlive™ technology suite—an essential problem solving tool.

**Handles routine to complex women's health exams with ease and precision**

Web ID 12697



## Samsung HM70A

Integrates intelligent imaging technologies to fulfill a wide range of needs with excellent image quality.

A combination software and hardware imaging engine offers faster and more accurate data processing, which means more in-depth and detailed scanning.

Ability to program assigned exam protocol to improve exam efficiency and reduce keystrokes.

SSD technology enables powering up in 60 seconds from the powered off state, and in approximately 14 seconds from the sleep mode.

**Deliver excellence wherever you go**

Web ID 12782



## Samsung HS60

Quick Preset - With one touch, the user can select the most common transducer and preset combinations.

S-Flow™ - A sophisticated color Doppler technology with greater sensitivity, S-Flow can detect low-intensity blood flow.

ElastoScan™ - detects the stiffness in tissue and converts it into color images.

S-Vision™ Imaging Engine - effectively removes noise artifacts resulting in clear, detailed resolution and tissue uniformity.

**Performance at its best**

Web ID 12789

## Samsung RS85

Combines exquisite image quality and expert tools, empowering clinicians to make fast, confident decisions.

Quick preset settings combine multiple keystrokes into one, making a full day of scanning simple and easy

Customizable touchscreen allows clinicians to navigate easily between frequently used functions.

13.1-inch tilting touchscreen can be adjusted to accommodate viewing preferences.

**Advanced intelligence, enriched view, streamlined workflow, patient-centered care**

Web ID 17206



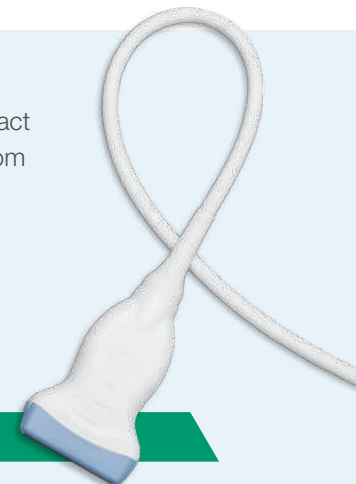
### Ultrasound Probes

With more than 3000 ultrasound transducers in stock and ready to ship, Avante Health Solutions is sure to have the exact probe for your needs. Our wide inventory includes probes from every major brand: GE, Philips, Siemens/Acuson, Toshiba, Samsung-Medison, and Sonosite.

**Browse our selection online, and find the right ultrasound probe today.**



**Industry leading probe repair services available**





## GE Corometrics Nautilus Toco Transducer with Knob

Corometrics Nautilus Toco Fetal Transducer with Knob can be used with the following monitors: 116, 118, 120 Series, 150, 170 Series.

Our line of OEM compatible Fetal Transducers provides a cost savings solution without compromising quality.

We also offer NEW compatibles for Hewlett Packard/Agilent/Philips and GE/Corometrics fetal monitors.

Web ID 17192

Standard length 8ft. on all GE Corometrics Transducers

Refurbished by Avante



## Philips M2736A Avalon Ultrasound Transducer

The Avalon FM series fetal and maternal monitors are the first and only to offer automated coincidence detection (cross-channel verification) using Smart Pulse. This innovative feature allows automated maternal pulse detection via the Toco MP transducer without the need to monitor maternal SpO<sub>2</sub> or ECG separately.

Web ID 17199

Can be used with FM-20, FM-30, FM-40, and FM-50 Avalon fetal monitors.

Refurbished by Avante



## GE Corometrics Nautilus Toco Transducer with Wing

Web ID 17194



## GE Corometrics Nautilus Ultrasound Transducer with Knob

Web ID 17200



## Philips M2735A Smart Toco+ Transducer

Web ID 17198



## Philips M2734B Smart Toco Transducer

Web ID 17197



Philips Avalon M2734A M2735A TOCO M2736A US Smart Transducer Top Case Cover

Exclusively by Avante



Philips M1355A TOCO Transducer Bottom Case Cover

Exclusively by Avante



Philips Avalon M2734A M2735A TOCO M2736A US Smart Transducer Cable Assembly

Exclusively by Avante

Fetal Transducer Parts



## Philips M1355A Toco Transducer with Belt Wire / Knob

Web ID 17195



## Philips M1356A Ultrasound Transducer with Belt Wire / Knob

Web ID 17196



## GE Giraffe OmniBed

Protects from heat loss while the bi-directional airflow maintains thermal stability.

Infant receives uniform heat regardless of position.

Radiant warmer provides consistent heat in any position.

No need to transfer patient from incubator to infant warmer.

360° rotating patient mattress.

### Full-featured incubator and a radiant warmer in one

Web ID 1555



## Air-Shields C-2000

Bi-directional air flow for consistent heating and humidifying.

Optional Dual Access Door – Allow access from either side, expediting care.

Large mattress and dual probes allow for simultaneous care of twins in the same unit.

Web ID 1005



## GE Panda iRes

Nuisance alarms eliminated for a quiet and stress free environment.

Integrated resuscitation with minimal setup in the event of high risk deliveries.

Unique, hourglass heat profile keeps heat away from the caregiver while providing uniform coverage across the mattress.

Web ID 11949



## Dräger Babytherm

smartSWIVEL mechanism focuses radiant warmth on infant.

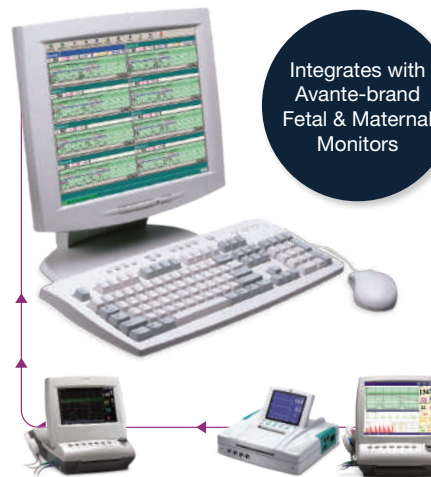
Web ID 1002



## Dräger Resuscitaire

Precise gas delivery prevents respiratory complications in neonates.

Web ID 1431



Integrates with Avante-brand Fetal & Maternal Monitors

## Avante Envoy FM

Central station for fetal/maternal monitors.

Provides continuous trace values and displays all measurement values for the fetus and mother.

Provides audio and visual alerts, making doctors and nurses immediately aware of critical events.

Saves time and effort with a user-friendly interface.

### Central station manages up to 32 fetal/maternal monitors at once

Web ID 1241

## Avante Compact FM



Dual fetal heart rate and TOCO monitoring.

10.2" folding color wide-screen.

Multi-crystal pulsed wave transducer.

Web ID 1193

## Avante Compact II



5.5" folding graphics display screen with large, easy-to-read numerals and waveforms.

Backup memory for seamless monitoring.

Web ID 1616

## GE Corometrics 250cx

Comprehensive perinatal monitoring needed during labor and delivery.

ChartLight with backlit keys and dimmable display.

Web ID 11788



## GE Corometrics 171/172

Monitors external uterine activity.

Highly portable unit at just 8lbs.

Dual ultrasound capabilities for twins pregnancies

Web ID 1681

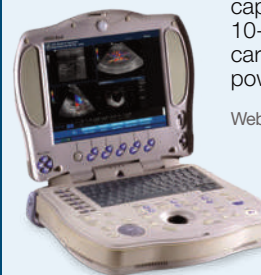


Ultrasound Systems

## GE Logiq Book

Full ultrasound capabilities in a 10-pound, hand-carried, battery-powered scanner.

Web ID 1081



## Avante Crystal 4PX

Next generation imaging and software.

High resolution color LCD screen.

Lightweight mobile design.

Easy-to-use patient management system for storing DICOM files.

Web ID 1630







## Stryker Laparoscopy Tower

Customizable, all-in-one units for the visualization and documentation of laparoscopy procedures

Available with a mobile cart (like the one shown at left) and essential laparoscopy components.

Also gives you capacity for arthroscopy and other rigid endoscopy procedures.

Web ID 11723

## Stryker 1488 HD

HD 3-chip camera with 9 surgical specialty settings designed to provide a clear, bright image.

Web ID 14357



## Stryker L9000

400-watt LED bulbs delivers bright, crisp light and long life expectancy

Web ID 14358



## Olympus EVIS EXERA III

Provides state of the art imaging quality and user-friendly features

Pre-freeze function automatically buffers a continuous, rapid series of procedural images and saves the sharpest renderings, saving time and frustration.

Advanced compression technology allows extended recording time.

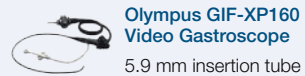
Web ID 11940



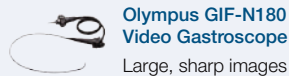
Olympus CLV-180



Olympus CV-180



Olympus GIF-XP160  
Video Gastroscope  
5.9 mm insertion tube



Olympus GIF-N180  
Video Gastroscope  
Large, sharp images



## Avante Compass LED

Surgical Microscope



Web ID 1517

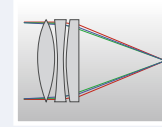


Combination of classic aesthetic and modern technology



### 0-180° Inclinable Binocular

This ergonomic feature allows for comfortable and exact microscope positioning.



### High Quality Lens

German Optical Glass, high resolution, real 3D precise image reproduction, large depth of field, wide field of view, and good contrast



### 6-Step Magnification

Provides a larger magnifying range and more selection on magnification to meet the requirement of your practice.



### Integrated LED light source

Provides long-lasting, pure white color light.

### MOUNTING OPTIONS:

- Ceiling
- Wall
- Fixed stand
- Table top clamp
- Floor mount

## Avante InView HD

Video laryngoscope ideal for a wide range of applications: ICU, Cardiology, Emergency and Ambulance.

Lightweight and ergonomic design weighs less than 1 pound.

3.5" display provides high-performance visualization capabilities for every intubation.

Low-cost disposable blades gives you huge savings.

Battery life lasts approximately 200 minutes.

Video display rotates 180 degrees, as well as up and down.

### Portable and ergonomically designed

Web ID 11910



Designed to provide an excellent view of the glottic opening and improve the success of tracheal intubation.

## Physio-Control Lifepak 20

Lifepak 20 has 7 main operating modes.

AC line operated device with an internal battery as backup.

Fully featured defibrillator/monitor (pacing and SPO<sub>2</sub>)  
5.58 kg (12.3 lbs).

Displays a minimum of 4 seconds of ECG and alphanumeric for values, device instructions or prompts. Option to display 1 additional waveform.

Web ID 950



**We test, touch up, replace, and restore these units to manufacturer specifications and offer a great value on recent technology**



## Philips HeartStart XL

A combination of manual defibrillation and automated external defibrillator capabilities.

Enables the first caregiver on the scene, whether an ACLS or BLS clinician, to deliver lifesaving defibrillation therapy.

Web ID 789



### SMART Biphasic Technology

Clinically proven superior to high-energy, monophasic waveforms for efficacy and for minimizing post-defibrillation heart dysfunction.

### Quick Charging

Charges to highest energy level, 200 Joules, in less than 3 seconds.



## Zoll M Series

Lightweight for easy handling – the built-in AC power/battery charger does not add size or weight.

Zoll Uniform Operating System features consistent, straight-forward controls; and intuitive menus lessen training costs, minimize operator confusion, and reduce the chance of error.

Zoll's proprietary Rectilinear Biphasic low-energy waveform.

Web ID 601

**Built with Patients and Users in Mind**



## Physio-Control Lifepak 12

Component-based and upgradable system is designed for long-term use.

Standard paddles, pediatric paddles, and/or sterilizable internal and external paddles available.

### Compact and portable defibrillator/monitor

Web ID 738



## Physio-Control Lifepak 15

CPR Metronome uses audible prompts to guide you without distracting vocal critique.

Noninvasive Pacing (Demand & Non-Demand).

3-Lead ECG Monitoring.

Manual & AED External Defibrillation.

### Advanced monitor/defibrillators for EMS and hospitals

Web ID 1567



## Zoll E Series

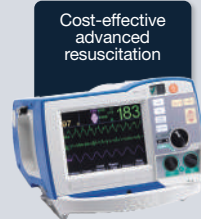
Patient Connection:  
3-lead, 5-lead or 12-lead ECG cable, paddles or MFE pads, selectable by front panel switch.



Web ID 1566

## Zoll R Series

Pacing, end-tidal CO<sub>2</sub>, non-invasive blood pressure, and SpO<sub>2</sub> monitoring capabilities.



Web ID 1605

## Zoll AED Plus

Gives even infrequent rescuers the confidence they need to help save lives.

Simple audio prompts and pictures reinforce every step in the resuscitation process.

Real CPR Help with instant feedback on rate and depth of compressions.

Easy-to-use CPR-D-padz for fast, accurate placement.

### Step-by-step support for the entire chain of survival

Web ID 499





Perfect for open electrosurgical procedures and laparoscopic



## ValleyLab ForceTriad

Provides surgeons with one generator for electrosurgical and tissue fusion needs

All-in-one unit is compatible with common electrosurgical instruments and all current and new LigaSure instruments.

Fusion cycles are faster than the original LigaSure vessel sealing generator.

Easy-to-use touch screen setup.

Reduces demands on staff during procedures.

Automatic instrument recognition.

Quick and efficient power and mode adjustments from within the sterile field for shorter procedures.

Advanced LigaSure tissue fusion technology permanently fuses up to 7mm vessels, lymphatics, tissue bundles, and pulmonary vasculature.

Web ID 1371



## Bovie Smoke Shark II

35-hour filter combines filtration in one casing, keeping cost down and minimizing waste.

Filter captures particles down to 0.01m with 99.99995% efficiency.

24 ounces of carbon for superior odor elimination.

Quiet, effective smoke evacuation

Web ID 1631



## Bovie Derm 101

10-watt high frequency monopolar desiccator to perform in-office, minor skin-related procedures.

Bright LED display for clear readings anywhere in the procedure suite.

Web ID 1628



## Bovie Derm 942

Digital desiccator with 40 watts of power.

Power dial is adjustable within 1/10<sup>th</sup> watt increments.

Web ID 11915



## Valleylab Force FX-C

For monopolar and bipolar procedures.

Power for cutting, desiccating, and fulgurating tissues.

Instant Response™ technology ensures that the power delivered remains virtually constant, regardless of the tissue type.

A smoother cut through all tissue types

Web ID 739



Optional durable cart available

Refurbished by Avante

## Valleylab FT10

Move through procedures more efficiently

Used for monopolar and bipolar applications.

Smart TissueFect tissue sensing technology reads tissue composition in real time.

7 inch LCD touchscreen.

Up to 50% faster sealing times.

Web ID 13836



Refurbished by Avante

## Valleylab Ligasure

A sealing system that provides permanent vessel occlusion

Revolutionary technology replaces almost all other hemostatic tools – it actually fuses vessel walls to create a permanent seal.

Two digital seven-segment displays.

Web ID 952







## Ohmeda 1251

Offers dual modes to provide the option of an intermittent mode for nasogastric drainage and a continuous mode for tracheal, pharyngeal or surgical suctioning.

The unique, patented unilogic module provides a reliable, quiet means of cycling the regulator on and off during intermittent suctioning.

Fully adjustable timing cycles (3 to 30 seconds), On and Off independently adjustable.

Durable design and construction with few mechanical parts.

Web ID 17190



## Ohio Push-To-Set 1224

Features the unique, patented Push-To-Set function, which provides a reliable means of setting the regulator for proper suctioning.

Provides regulated, continuous suction for tracheal and pharyngeal airway man-management, surgical procedures, and continuous nasogastric drainage.

Bright glow-in-the-dark gauge increments and needle.

Small, sleek design for tight spaces.

Instantaneous MAX Vacuum mode.

Web ID 17188



## Gentec 881VR-300

Provides both continuous regulated suction and intermittent regulated suction.

Available in three regulated vacuum ranges: 0-160, 0-200, and 0-300 mmHg.

Features a dual scale mmHg and kPa, 2-1/2" in diameter, glow-in-the-dark gauge.

Has reinforced inlet and outlet ports to prevent breakage.

Web ID 17205



## Philips M1019A G5

Automatically identifies agents, and features mixed agent measurement capability.

A fast oxygen measurement based on advanced paramagnetic technology is standard with the G5.

**Durable, compact, and easy to maintain**

Web ID 1589



## Philips M1026B

Uses infrared absorption technology to measure the five most commonly used anesthetic gases, plus N<sub>2</sub>O and CO<sub>2</sub>.

Oxygen is measured using a paramagnetic technique.

**Automatic identification of anesthetic agents**

Web ID 17191



## GE SAM

Provides analysis of respiratory and anesthetic gases when used in conjunction with GE patient monitors.

This compact module provides CO<sub>2</sub> waveforms, and automatically identifies anesthetic agents and quantification.

Web ID 17204



Oxygen Blenders



## Bird Small Block Oxygen Blender

Perfect for air, ground, and in-house transports as well as infant applications.

The Low Flow Blender features a flow range of 3-30 L/min with no gas bleed flow, or 0-30 L/min with a minimal 2.5-3.5 L/min gas bleed flow.

Available for use with Datex-Ohmeda: Aespire, Aestiva 3000, Aisys, Avance, Engstrom Modules SE7900, Excel 210-7900, Modulus SE1700, S-5, Smart Vent.

Web ID 17189

Avante offers complete services on large and small block blenders.





Rugged & Reliable for a Low Cost of Ownership

## Puritan Bennett 840

High-performance pneumatics, dual-microprocessor electronics and DualView™ touchscreens.

Supports communication with patient monitoring and information systems, and provides seamless electronic data transfer to a patient's medical record.

Enhanced non-invasive ventilation (NIV): improves comfort for patients and performance for clinicians.

**Delivers sensitive, precise breaths to critically ill neonatal, pediatric and adult patients**

Web ID 545



## Puritan Bennett 980

**Engineered to help patients breathe more naturally**

Versatile respiratory ventilator offers non-invasive SIMV and CPAP.

Tube compensation accurately overcomes the work of breathing imposed by the artificial airway.

Standby mode pauses ventilation and maintains settings while the patient is disconnected and auto-detects reconnection.

Networking capabilities allow interfacing with existing EMR systems.

Web ID 11905



## Siemens Servo-i

Flexible ventilator is adaptable for all patient categories.

4 configurations are available: SERVO-i Infant, SERVO-i Adult and 2 editions of SERVO-i Universal.

SERVO-i supports both invasive and non-invasive ventilation.

Ease of training, operation and maintenance as well as flexibility and modularity ensures a low life cycle cost.

**High performance, mobile, cost-effective respiratory system**

Web ID 943

## Pulmonetic LTV Series

Ventilator pre-sets allow for the quick set-up of new patients.

Automatically configures the initial ventilation settings for infant, pediatric or adult patients.

Intuitive interface features color-coded controls and alarms.

Invasive and Non-invasive modes of ventilation for patients as small as 5kg.

Features an innovative Spontaneous Breathing Trial.

**Ease of use and versatility help ensure optimal patient care in clinical settings**

Web ID 1130



➤ Visit [avantehs.com/medical](http://avantehs.com/medical) for more LTV Series ventilators ➤➤



### Dräger Evita Infinity V500

Designed for adult, pediatric, and infant use.

High performance ventilation during transport.

Web ID 13864

### Dräger Babylog VN500

Configurable to suit your needs.

Integrated non-invasive ventilation and high-flow oxygen therapy.

Web ID 17208



### Philips Respironics V60

Non-Invasive ventilation with an interactive display.

Web ID 1532

### Philips Respironics V200

Invasive and Non-Invasive ventilation for pediatrics and adults.

Web ID 1441



## Respironics Trilogy 100

Intuitive interface combines ease of use with access to high levels of versatility and performance during hospital titration or home use.

Offers up to 6 to 8 hours battery capacity for continuous use.

**Designed for versatility**

Web ID 11729





## Alaris 8015 PC Unit

Color display clearly communicates critical programming, infusion, monitoring and hospital-defined policy information.

Wireless network card provides wireless communication capability between the Alaris System, Alaris Server, and Mobile Systems Manager.

### Target infusion needs using a modular platform

Web ID 1647



Contact us today for our full selection of Alaris pumps



## Alaris 8100

Designed for the delivery of fluids, medications, blood and blood products using continuous or intermittent delivery for adult, pediatric or neonatal patients.

Increased Protection for IV safety.

### Exceptional versatility

Web ID 1651

Alaris Pump Parts



Alaris 8100 Infusion Pump Module Pressure Sensor



## Alaris 8110

Combines precision instrumentation with the safeguards of the Guardrails Suite MX software, helping ensure that the right dose or rate is delivered to your patient.

Works with Alaris PC Unit to deliver continuous or intermittent infusions.

Pressure-sensing disc technology provides real-time information, shortens alarm time, decreases bolus after occlusion release.

### Employs state-of-the-art technology to increase safety

Web ID 1653

## Medfusion 3500

Programmable dose limits.

Rapid occlusion detection; Post-occlusion bolus reduction.

Up to 10 hours internal battery capacity.

Accepts all syringe sizes cc - 60cc.

Mounts easily to an IV pole, an infant's isolet or radiant warmer and rotation capabilities.

Connectivity with Patient Data Management Systems.

Web ID 1017



## Medfusion 4000

Safe for use with patients in pediatric and neonatal intensive care units, adult critical care units and in the operating room.

Proprietary smart pump technology encourages the use of configurable drug libraries, more reliable than traditional infusion methods.

Smart pump technology allows clinicians to identify problems and trends in infusion delivery.

Accurate delivery at +/- 2% for 0.01 mL/hr to 1130 mL/hr flow rates.

### Delivers safe, accurate medication delivery in a variety of clinical settings

Web ID 13805



## Baxter Sigma Spectrum

Lightweight and compact pump with bright color screen and lithium-ion battery pack. *Replacement battery modules available.*

EMR Integration and Quick-Search MDL Access.

Safety features include: titration error prevention, check flow information alerts, automatic MDL updates.

Quick search drug libraries assist is easy set-up of infusion.

Standard IV administration set compatible.

Web ID 1627



Medfusion Pump Parts



Top Case

Exclusively by Avante



Battery





## Baxter Infus O.R.

Adjust settings easily at any time during infusion.  
 Change dial settings with a single hand for an immediate response.  
 Modify dose without multiple reprogramming steps.  
 Ideal for administering drugs requiring multiple dosage adjustments.

**Easily change infusion parameters and rates with Smart Labels**

Web ID 32



## Alaris MedSystem III 2865

Three independent infusion channels.  
 Small, compact size and lightweight design (5.1 lbs).  
 Set-based, free-flow protection with needle-free access.  
 Delivers intravenous, intra-arterial, epidural and subcutaneous applications.

**A compact, versatile, multi-channel infusion system**

Web ID 1530



Aspirators



## Avante DM-660

1/5 horsepower pump delivers 0 - 26 inHg (0 - 660 mmHg).  
 Float shut-off in the canister lid and an Inline Hydrophobic Filter to prevent back flow of fluid as well as airborne contaminants from entering the pump.

Web ID 1343

## Gomco Optivac G180

25 - 550mm Hg vacuum range, coupled with greater than 30 lpm flow.  
 Compact size with rechargeable battery that runs for approximately 3 hours at maximum vacuum.

Web ID 740



## Avante DM-530

High-performance, battery-operated suction unit with battery backup; 1.5 hours of run time.  
 Inline Hydrophobic Filter to prevent back flow of fluid as well as airborne contaminants from entering the pump.

Web ID 1614

## Comfort Series

### Blanket and fluid warmers

Rapid warming time and uniform heating.  
 Digital controls and display.  
 Made of 100% USA Stainless Steel.  
 Stainless steel or full view glass door, with adjustable shelving.  
 2-year warranty included.

**9 Different Styles & Sizes**  
 Floor & Countertop Options



**Comfort VC9**  
 Web ID 418



**Comfort Dual**  
 Web ID 423



**Comfort Dual View**  
 Web ID 422



**Comfort VC21**  
 Web ID 421



**Comfort C5**  
 Web ID 417



**Comfort VC5**  
 Web ID 416



## Warm Touch 6000

Helps minimize post-surgical complications and improve recovery time.

Intuitive LCD screen and menu function provide all information at a glance.

Web ID 1559

## Bair Hugger 505

Snap-fit hose swivels at 3 points for blanket attachment and positioning.

Web ID 1072



## Avante Wildcat 750

Compact unit delivers powerful, accurate warming while taking up minimal workspace in your facility.

Main unit weighs less than 10 pounds, making it ideal for transport and mobile warming.

Easy-to-use interface designed for quick setup and efficient operation.

Temperature sensing at the hose-end helps to deliver accurate air temperature every time.

Four standard one-touch temperature selections: Ambient, 32°, 38°, 43°.

**Lightweight, space-saving and intuitive**

Web ID 13865



## Tuttnauer EZ10

Pre-loaded cycles for: unwrapped instruments, wrapped/packs, glassware and additional drying cycle.

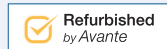
Web ID 1090



## Tuttnauer EZ9

Closed door active drying system to maintain sterility and ensure efficient drying of packs and pouches.

Web ID 465



## Capnography & CO<sub>2</sub> Nasal Cannulas

Yearly cannula expenses for your monitors can add up quickly.

Call us for significant savings on high quality disposable cannulas.



## Cautery



Electrodes, Forceps, Grounding Pads, and more.

## Laryngoscopes

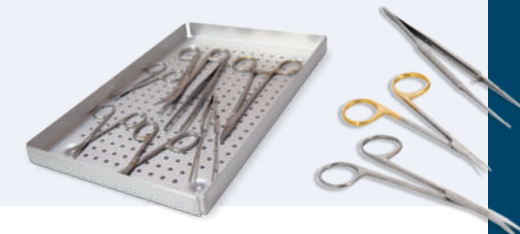


Blades, Handles, Lamps, and Complete Sets/Kits.

## Surgical Instruments

Available individually and in pre-packed Instrument Sets.

OR grade sets made from German steel using state-of-the-art manufacturing technology to perform in the most demanding operating environments.



Shop online for **30,000+ Products** from the Brands You Trust. Masks, Airways, Oxygen Cells, Table Pads, Bougies and more.

## Surgical Scrub Sinks

Single and Double Station Sinks available.

Made with 100% USA stainless steel.



I.V. Poles



Mayo Stands



Kick Buckets



Work Tables

## GAS SYSTEMS

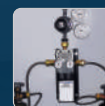
### SUPERIOR OUTLETS

Double O-ring seal that doesn't deform and leak when weight is added to the outlet front  
Outlet is capable of supporting 10 lbs. at 2" without leaking  
Outlets incorporate protective vinyl labels that are durable and scratch resistant



### GAS DELIVERY MANAGEMENT

Headwalls, consoles and rail systems  
Gas outlets, manifolds and air compressors, alarm systems and pressure switches  
Fittings and hose assemblies  
Emergency oxygen inlet box  
Nitrogen control panel and conversion kits  
Flowmeters and accessories  
Check, relief and ball valves, and zone valve boxes



### AUTO SWITCH MANIFOLD

Ideal for applications requiring automatic switching of cylinders or banks of cylinders.



### MEDICAL ZONE VALVE BOXES

Incorporate dual ported valves. May be piped from left to right or right to left. The installation and pipeline design have been simplified, which can save time and money for the contractor and facility.



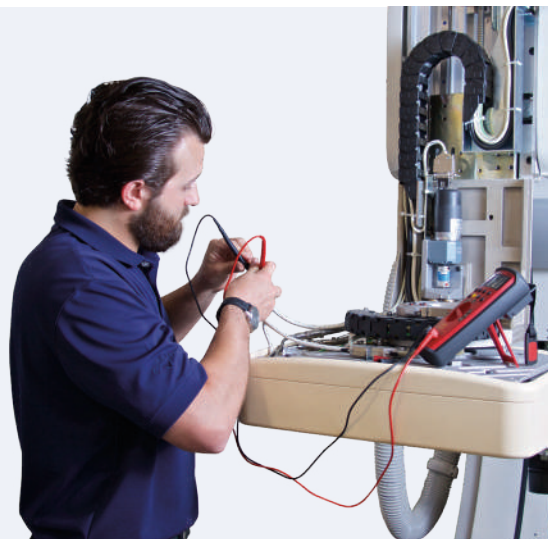
## Solutions for All Modalities of Imaging

- ✔ Cath / Angio
- ✔ Computed Tomography
- ✔ Magnetic Resonance Imaging
- ✔ C-ARM

Avante Health Solutions is a leading provider of high-quality cath/angio, CT and MRI equipment. Our equipment is supported by a wide range of technical support and repair services from experienced engineers.

### IMAGING SERVICES

Avante Health Solutions has an outstanding service team with industry leading engineers across the United States who quickly respond to customer needs. They are equipped with the knowledge and tools to handle the most difficult technical problems. We offer full support on any system, even on imaging equipment not sold by Avante.



## The Ultimate Combination of Performance & Economy

Avante professionally serviced linear accelerators and CT simulators provide the performance and reliability of a new model, while maintaining a lower price point. When choosing Avante, you also benefit from professional installation and an iron-clad warranty backed by the best independent service organization in the industry.

Nobody sells more refurbished linear accelerators or has a larger inventory of radiation oncology devices, including:

- ✔ Linear Accelerators with IMRT/IGRT delivery capabilities
- ✔ CT Simulators
- ✔ Record and Verify Systems
- ✔ Treatment Planning Systems
- ✔ MV Imaging Upgrades
- ✔ MLC Upgrades



### BRANDS

Avante Health Solutions is your source for Precision Certified linear and accelerators and CT systems worldwide. We are the world's largest supplier of re-certified linear accelerators, and our equipment is being used in more than 30 countries on six continents. We welcome the opportunity to provide our high-quality, low cost oncology equipment to more cancer centers throughout the world.



### LINAC SERVICE & SUPPORT



While Avante's service saves you money, our uptime guarantee ensures that your qualified radiation therapy equipment will be up, running and generating income. It's a combination of benefits that ensures both a better return of your equipment investment and reliable, accurate therapy for your patients.



Avante | Health  
Solutions

CONTACT US TODAY (800) 979-6142 • [avantehs.com](http://avantehs.com)