



DRE Crystal 4P

Advanced Portable Ultrasound

Crystal 4P

Advanced Portable Ultrasound



DRE Crystal 4P

Crystal 4P has a sophisticated design for use in any medical specialty. With advanced technology for sharp image acquisition and diagnostic confidence.



Convex array:
C352UB



Micro-Convex array:
C322UB



Micro-Convex array:
C612UB



Linear array:
L742UB



Linear array:
L1042UB



Linear array:
L762UB



Endovaginal:
E612UB



Endorectal:
E762UB



Phased array:
P224UB



➤ Transducers

Crystal 4P offers a wide transducer selection for more flexibility and reliability.



> Features

DRE Crystal 4P provides compact, ergonomic design and user-friendly workflow.

- Compact size for easy mobility
- LED screen enhances visual experience
- Built-in extended battery life
- Q-Resume for low carbon practice



12.1" high resolution LED display

Built-in lithium battery for 2 hours' continuous work

Light-weight design for excellent mobility

Unique gel holder design

Abundant peripheral ports: VGA, USB, DICOM, etc.



Power doppler imaging

Backlit control panel

Quick save simplifies the operation

Color doppler flow imaging

Pulse wave doppler

Enhanced Imaging



Color Doppler Imaging of Vertebral Artery



Color Doppler Imaging of Hepatic Vessels



Color Doppler Imaging of Kidney



High Sensitivity Color Doppler of Small Part



Transvaginal 2B Scan of Ovary



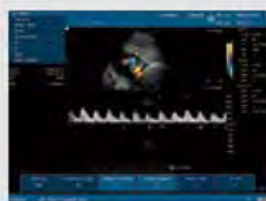
Transvaginal Scan of Fetus

Technology

The portable Crystal 4P offers advanced technologies like color flow, pulse wave and power doppler.



Harmonic Imaging Shows Near Field details



Multi-Beam-Forming (mBeam)

Beam-Forming Optimization (BFO)



Phased Inversion Harmonic Compound Imaging (eHCI)

Speckle Resistance (eClear)





DRE, Inc.
1800 Williamson Court
Louisville KY, 40223
1.800.462.8195
1.502.244.4444
www.dremed.com