



# U | URBAN AI

SEE THE CITY LIKE NEVER BEFORE

[www.urban-ai.org](http://www.urban-ai.org)



## THE MUNICIPAL CHALLENGE: Protecting both the resident and the budget

Every year, thousands of lawsuits are filed against local authorities for hazards in the public space. The cumulative damage is enormous: in resources, costs, and especially in impairing life quality and even in human life.

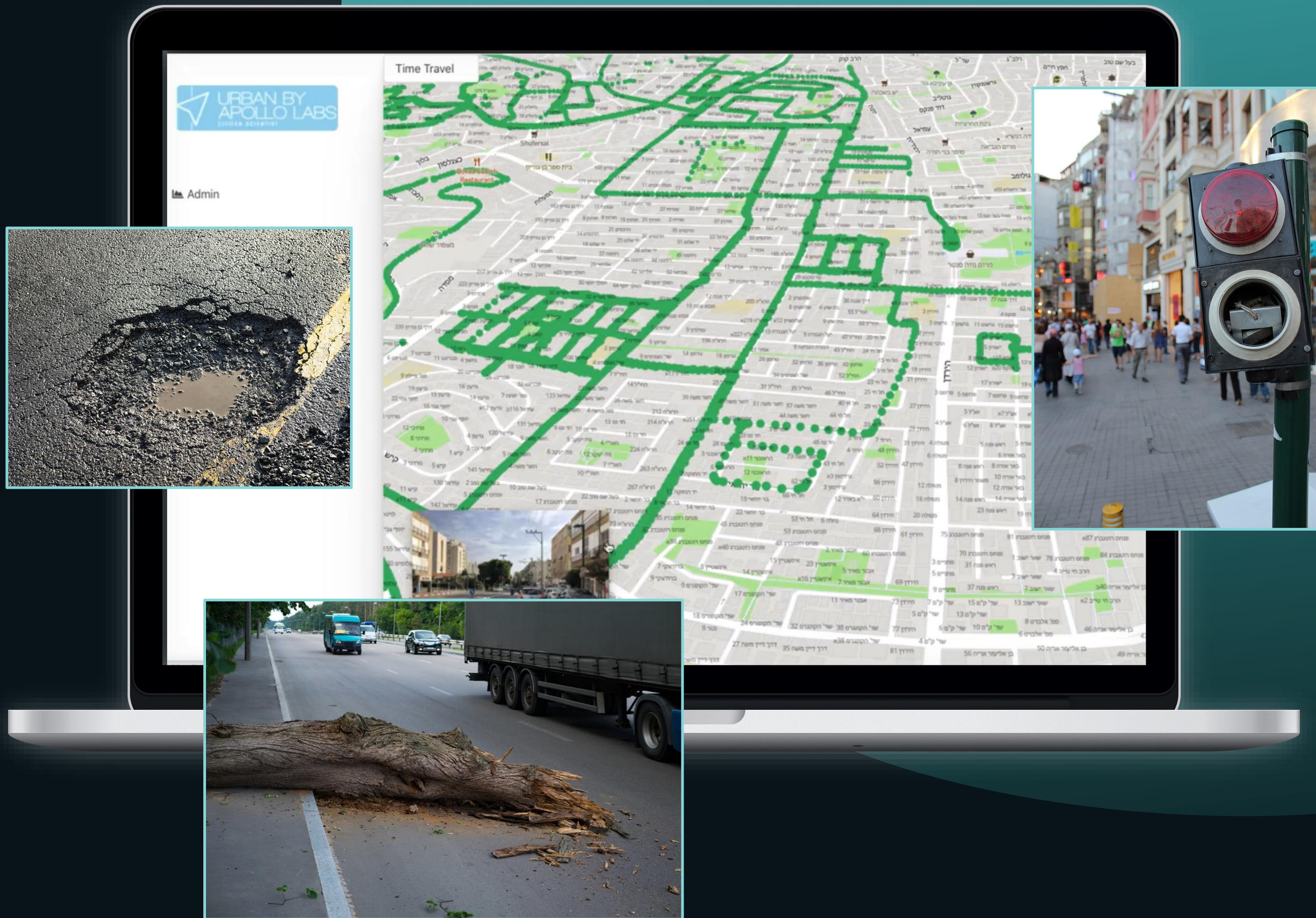
Most of the nuisances, and with them claims and expenses, could have been prevented.





# URBAN AI Unique 3D urban mapping system

The system allows real planning and dealing with day-to-day problems in the city, long before they become an actual danger.





# Detects and maps problems in the urban space





# The Technology behind the system



Sophisticated Data Science system surveys the city using 4k resolution cameras, and decodes objects in urban space using advanced AI algorithms.

This way the system can understand and learn what the various objects are, displaying them in 3D and in GIS. This data can fully integrate with the municipal CRM system - and most systems in municipal use, enabling smart use of data with existing tools.



## URBAN AI

# Urban AI enables creating surveys at a touch of a button

Order real urban space surveys at a touch of a button, and even schedule them on a periodical basis. Use the Urban AI Time-Lapse which allows examining changes in the urban space over time. Receive results as fast as 24-hours.



**Parking surveys**



**Lighting surveys**



**Hazards and Safety surveys**



**Bin surveys**



**Receptors surveys**



**Construction supervision**

# SYSTEM ADVANTAGES

## Improving residential service



### RESIDENT SECURITY AND SAFETY

Prevention of injuries and accidents in the public space and in public institutions.



### MEETING SPECIFIC NEEDS

Preparing schools for the school year, mapping accessibility or preparing the city for the needs of senior citizens.

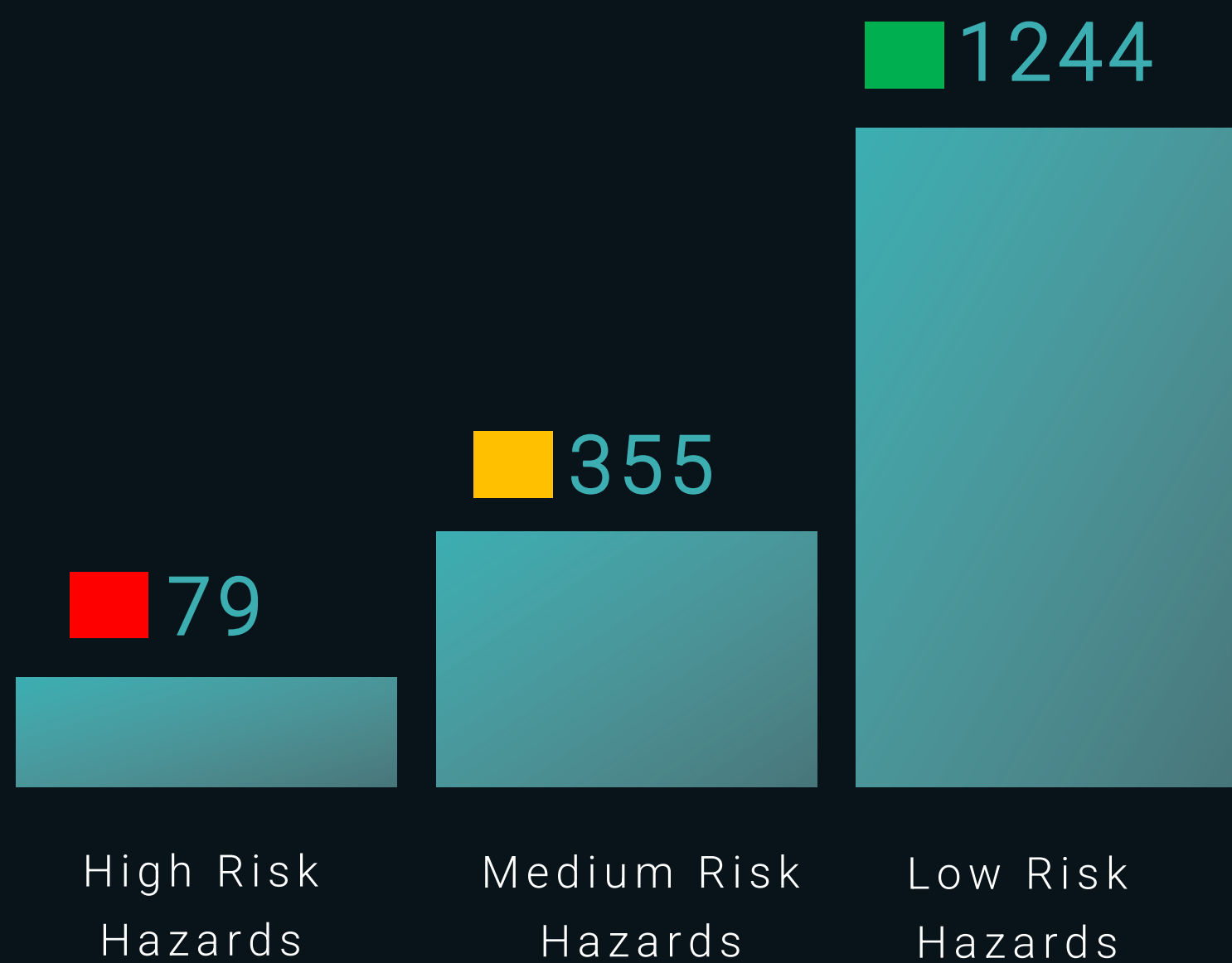


### IMPROVING THE MUNICIPALITY'S IMAGE

Using a preventative approach - the municipality initiates and improves, long before residents file a complaint.

# SYSTEM ADVANTAGES

## Improving the municipality work



### EFFICIENT RESOURCE ALLOCATION

Reduce calls to the city-hotline and allocate resources on other important issues.



### PRIORITIZATION AND PLANNING

The system alerts hazards according to their risk level in real time. Thus, the municipality can wisely plan and prioritize work instead of reacting ad-hoc to each incident.

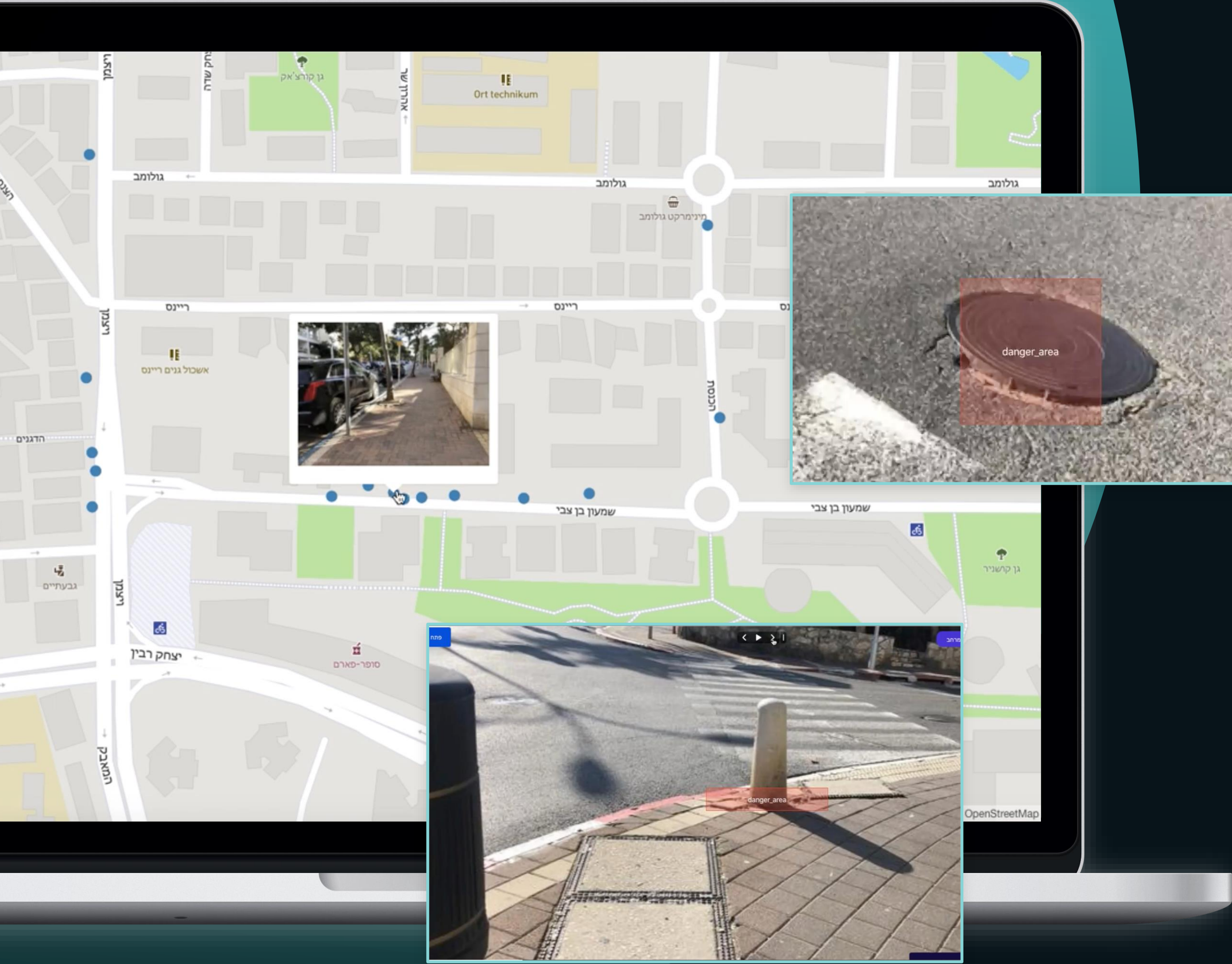


### FINANCIAL SAVING

Reduce the number of lawsuits against the municipality, and deal with hazards before they develop and cause greater damage.



# URBAN AI Conducting risk management for hazards in the city



A municipality cannot treat all hazards at the same time, therefore the system provides risk rating for different types of hazards to ensure immediate treatment of the most dangerous.



## TRACTION

# The system assists multiple authorities in a global scale

The system is currently deployed in multiple municipal authorities and institutions. It can be deployed in any country and provide solutions and analysis as quickly as within 24 hours.





## OUR TEAM

# The Leadership



**Shimon Sheves**

CHAIRMAN

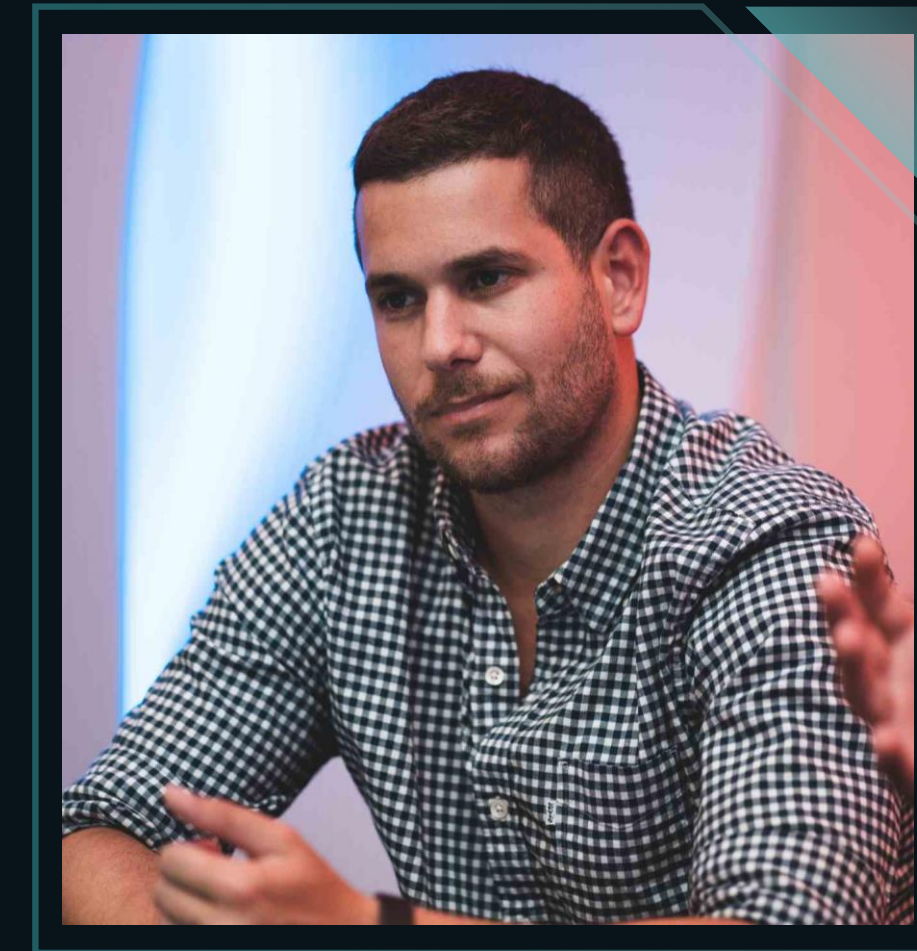
Former Chief of Staff for the Prime Minister of Israel, businessman and chairman of "HolistiCyber" company.



**Erez Damoch**

CO-FOUNDER & CEO

Former Head of Data of Leumi Bank's digital bank and lead developer of Leumi's credit scoring model.



**Orry Kaz**

FOUNDING PARTNER

AI Researcher and lecturer, Data Science and Machine Learning expert, Reichman University, IDC Herzliya.