

Your Drug Efficacy.  
**Now** Revealed.



# Unbiased outcomes. Delivered.

## Make the Decisions that matter. Now.

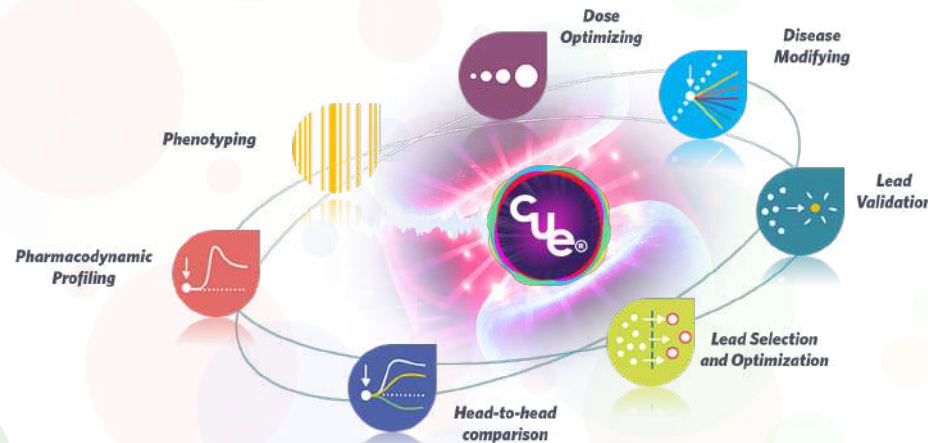
- Today's preclinical brain drug discovery lacks **predictive biomarkers** of in-human efficacy, leading to dramatic attrition rates at Clinical Phases II & III.
- Inspired by the clinical practice, we apply **quantitative EEG** methods (qEEG) on translational models to address this unmet need for predictivity.
- Neural network oscillations are indeed known to be altered in various brain disorders. Disease-specific **oscillatory signatures** can be used as surrogate biomarkers for drug discovery.
- Named **Cue®**, our powerful qEEG-based technology platform was designed to help our clients **make better-informed decisions** as it delivers reliable insights on **drug efficacy** right from brain oscillations.

## Powerful Pharmacodynamic assays.

- Cue® combines high-end brain recording capabilities, proprietary signal processing, clinically-relevant animal models mimicking human diseases, and a team with strong skillsets in Neuroscience and Pharmacology.
- To your specific question, Cue® delivers precise **functional profiling** of your compounds with high reproducibility levels, objective endpoints and robust datasets.

### Compound testing capabilities that include :

- Surface to deep brain recording
- **In vivo exclusive** assays
- Freely-moving **translational models**
- Crossover **clinical protocols**
- **Ability to compare** to reference drugs



## Neuroscience expertise.

### ⚡ EPILEPSY

- Partial and generalized epilepsies
- Stable and spontaneous discharges
- Biomarkers: SWD and HPD
- Models: MTLE mouse and GAERS rat
- Non-convulsive models
- Anti-epileptic effect- Derisking
- Disease-modifying - Epileptogenesis - Screening

### 🧑 MOVEMENT

- Parkinson's, Dyskinesia and Essential Tremor
- Motor-related abnormal oscillations
- Biomarkers: BetaPARK and GammaPARK
- Models: 6-OHDA rat and Harmaline mouse
- Antidyskinetic effect - anti-parkinsonian effect
- Acute or chronic protocols

### ⚙️ COGNITIVE

- Schizophrenia, Alzheimer's disease, Autism
- Pharmaco-induced oscillations
- Auditory-evoked potentials
- Biomarkers: ASSR and AERPs
- Defects in information processing
- Pro-cognitive effect

### 🔍 EXPLORATORY

- Want to check your compound effect on brain oscillations?
- Wishing to phenotype your own model?
- Having massive EEG data to analyze?

You can then benefit from our **Exploratory program** to answer these questions. We also offer you to move forward by taking advantage of our **Derisking program** to unveil potential side effects (pro-epileptic, pro-kinetic, toxicity...) of your compound.

## Partnering with SynapCell



### TEAM

We're experts in Neuroscience, Pharmacology, and Brain Surgery.



### REPUTATION

Over 13 years supporting preclinical drug development for international companies of all sizes.



### QUALITY

Quality management system, with SOPs. Animal welfare and EU guidelines compliance.



### INNOVATION

Strong Research & Innovation. Solid Pipeline. No outsourcing.

> **Personalized Study design**

> **3 to 6 weeks to result**

> **Comprehensive Report**



SYNERGY Building  
ZAC Isiparc  
38330 Saint-Ismier  
France

hello@synapcell.com  
www.synapcell.com

## **PREDICTIVE BIOMARKERS**

## **DECISION-MAKING ASSAYS**

## **CNS EXPERTISE**

SynapCell is a preclinical stage biotechnology company focused on Central Nervous System disorders. Since 2005, our CRO activity supports international pharmaceutical companies in revealing the therapeutic potential of their compounds in development. Cue<sup>®</sup>, our predictive decision-making solution comes with a large set of assays specifically designed for Drug Discovery applications. Quantitative, Cue<sup>®</sup> uses the power and sensitivity of Electro-Encephalography (EEG) to identify functional biomarkers of neurological diseases in vivo, with remarkable human translatability. Our returning customers in USA, Japan, Korea or Europe helped the company establish a solid reputation on the market and is the basis for long-lasting successful business partnerships.