

# THE GOOD FOOD INSTITUTE ISRAEL

## Accelerating alternative protein research and innovation in Israel

The Good Food Institute (GFI) is an international, science-based non-profit organization, focused on building a sustainable, healthy, and just food system. GFI Israel works with partners in the Israeli scientific, governmental and business sectors to promote groundbreaking alternative protein research and innovation.

### THE CHALLENGE

Current meat production is unsustainable and inefficient. It is a key driver of **climate change**, **environmental degradation**, and **antibiotic resistance**. Yet these facts have not sparked significant behavior change: humanity's consumption of meat is constantly growing.

### OUR SOLUTION

- We can create meat from plants or cultivate it directly from cells, more sustainably and efficiently.
- GFI is accelerating the transition of the global food system to alternative proteins by making them more delicious, affordable, and accessible than conventional animal products.

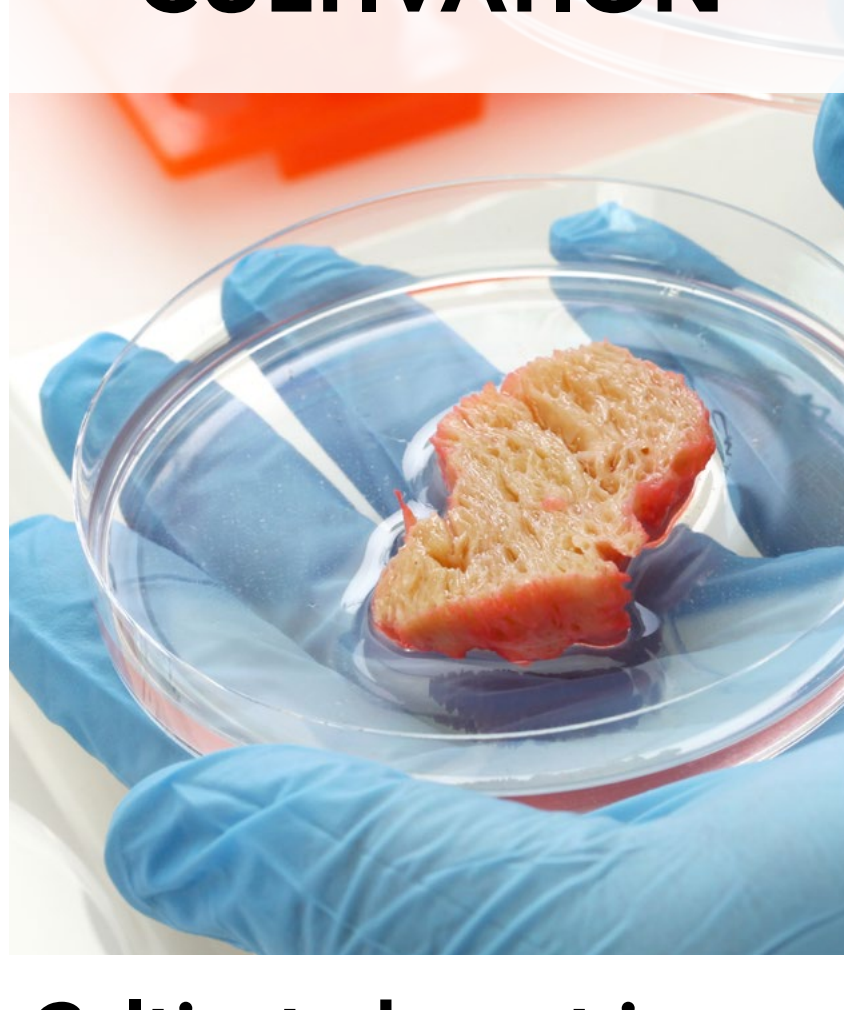
## THE ALTERNATIVE PROTEIN LANDSCAPE

### PLANT-BASED



**Plant-based meat, eggs, and dairy are produced directly from plants.** Like animal products, they comprise protein, fat, vitamins, minerals, and water. Next-gen plant-based options look, taste, and cook like conventional choices.

### CULTIVATION



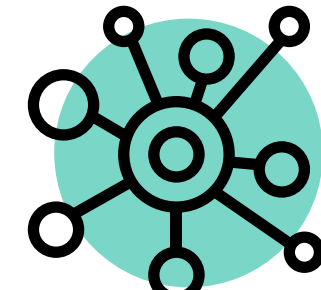
**Cultivated meat is produced directly from animal cells.** Meat cultivation facilitates the same biological process that happens inside an animal by providing warmth and the basic elements needed to build muscle and fat.

### FERMENTATION



**Ingredients produced via fermentation are also used to make alternatives to legacy meat, eggs & dairy.** Microorganisms are programmed to produce specific animal proteins or fats during fermentation, or microorganisms' own high-protein biomass is used.

### WHAT WE DO



#### SCIENCE AND TECHNOLOGY

- Scientific reports, databases, support & counseling.
- Academic courses and lectures.
- Open-source research fund.



#### CORPORATE ENGAGEMENT

- Top-notch consulting for large food, agri, pharma & other companies.
- Support for entrepreneurs from idea to market.
- Global investors relations.



#### POLICY

- Engage Israeli government ministries and agencies to prioritize alternative protein research and innovation, advancing new food regulation and governmental funding.

> [Check out our online resources](#)

## MAXIMIZING OUR IMPACT

- » **We share knowledge freely.** In a field where many innovators seek novel solutions to the same set of problems, GFI's research, data, and insights are open-access and support the progress of every innovator in this space.
- » **We focus on the white space.** GFI advances high-impact, tractable solutions in areas where too few people are working.
- » **We take a big-picture perspective.** GFI works across the plant-based and cultivated industries, the public and private sectors, and international borders, as well as into future decades. We spot and address today's industry-wide challenges.

GFI is a nonprofit working to create a sustainable, healthy, and just global food system. Plant-based, cultivated, and other alternative proteins offer a better way to feed the world.



100+ staff in 6 regions

EUROPE • ASIA PACIFIC • ISRAEL • USA • BRAZIL • INDIA



The Good Food Institute Israel (R.A.), 580694396

[www.gfi.org](http://www.gfi.org), [israel@gfi.org](mailto:israel@gfi.org)

Click here for our: [f](#) [in](#) [YouTube](#) - The Good Food Institute Israel