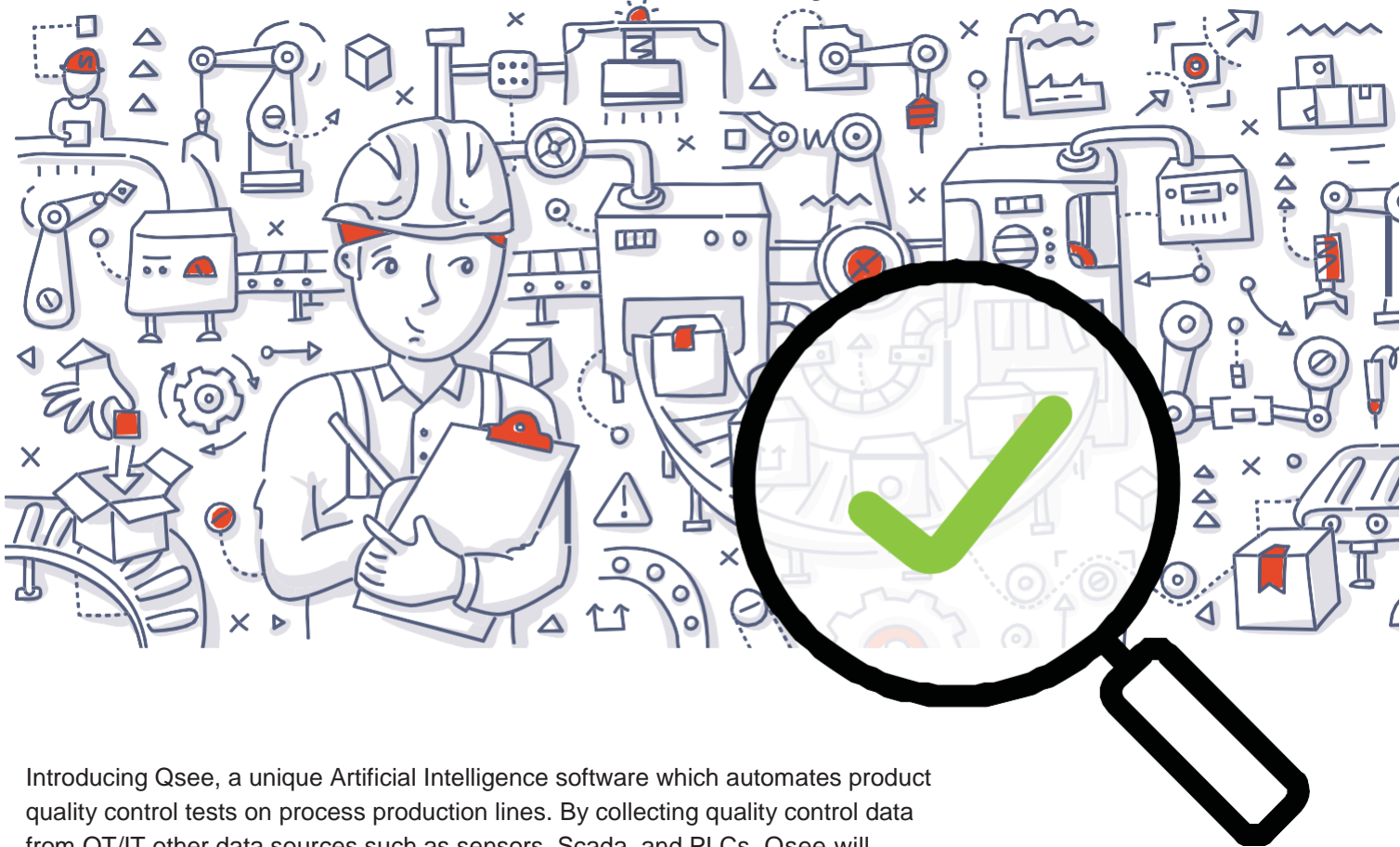




Bringing Quality Control in Line with Industry 4.0



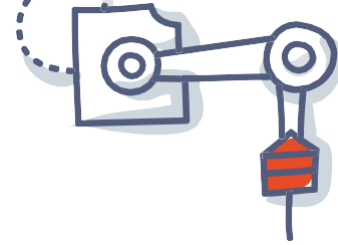
Introducing Qsee, a unique Artificial Intelligence software which automates product quality control tests on process production lines. By collecting quality control data from OT/IT other data sources such as sensors, Scada, and PLCs, Qsee will predict quality of the product at each stage of the process as well as indicate which features impact quality. Qsee enables production lines and operators to run the line faster – resulting in 10%-20% productivity increase.

Quality predictive capabilities enable real-time operation – improvements, process stabilization, reducing waste, preventing inventory loss and damage to commercial reputation.

The Increasing Cost of Defective Products

Not only do defective products pose a serious safety risk to the public, but they also cause significant financial and reputational damage to the company. Defective product incidents have caused insured losses in excess of \$2B over the past five years, making them the largest generator of liability losses.

Improving quality and reducing defect rates can generate millions of dollars of revenue per year for your company.



Transform Your Quality Control from Reactive to Proactive

Valuable Data Underutilized

Rapid adoption of new machines and sensors is generating valuable data sets on production that aren't being used properly. Despite this, many manufacturers are struggling to leverage the value of their manufacturing data. Even the most effective workers cannot come close to analyzing all the available data.

Powered by Qsee Artificial Intelligence for predictive quality, the Qsee artificial intelligence tool will automatically learn and analyze the process and product quality, preventing scrap and at the same time constantly optimizing the process by indicating the main features that impact the process.

Relevant Markets

Food and Beverage, Chemicals, Minerals, Plastics, Rubber, Building Materials, Pharma, Textiles, Pulp & Paper, Oil & Gas, Power

Features & Capabilities

- Early prediction of quality issues
- Continuous failure prediction
- Continuous root cause analysis
- Production/Batch/Product quality analysis
- Golden batch analysis
- Reduces downtime
- Secured and backed up
- Improves process stability
- Reduces scrapped
- Insures quality control



Use Case

Pulp and Paper Mill

Continuous production of paper begins with preparing and leaving material for about two hours. After the delay, it takes about an hour to collect the paper from the cylinder. Qsee predicts and explains paper strength and prevents paper tears to help manufacturers improve productivity and product quality before problems occur.

Building Materials

Discrete manufacturer engages in the production of quartz surfaces used for kitchen countertops. They use Qsee to predict and explain quality issues during and after production and to reduce scraps and rework.

Chemicals and Pharma

Batch process production can last between a few hours to multiple days.

Qsee to predict and notify of quality degradations before the end of production and the root cause before it effects the batch.

Contact Us

If you'd like to learn more about how Qsee will improve your process, please contact us at sales@qsee.io

