

# FROM SUFFICIENT TO EFFICIENT

Real-Time Asset Performance Monitoring

3dSignals



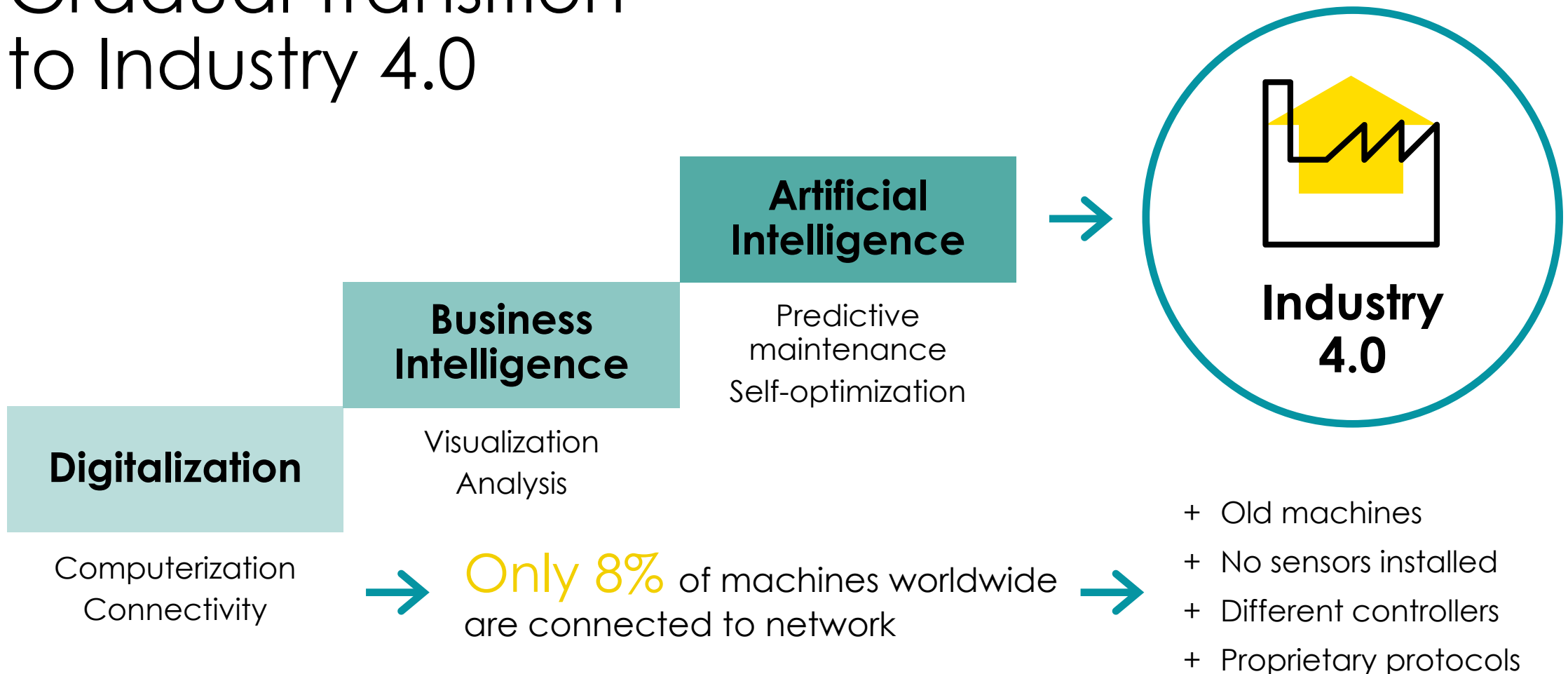
# The Challenge

# Are You Getting The Most Out of Your Production Floor?

- Are all your machines **currently** working as planned?
- Where are your **bottlenecks**?
- Is the night shift as **efficient** as the morning one?
- Are all your machines **optimally** utilized?



# The Vision – Gradual Transition to Industry 4.0

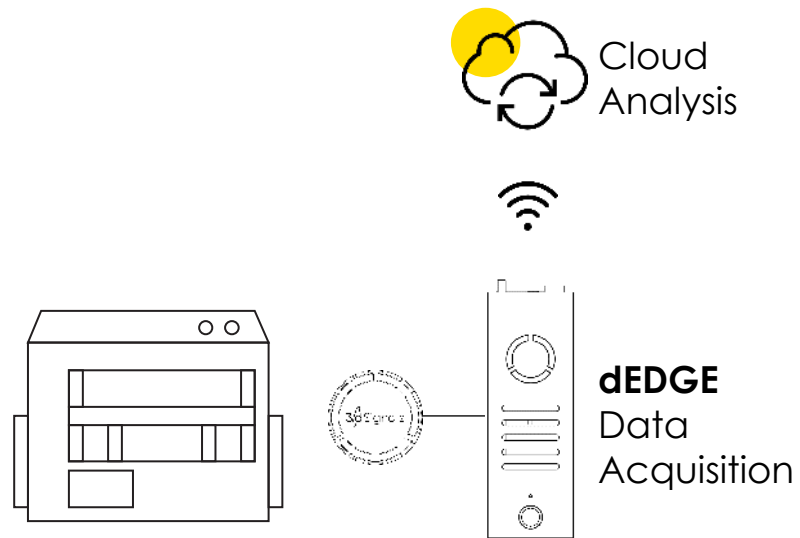




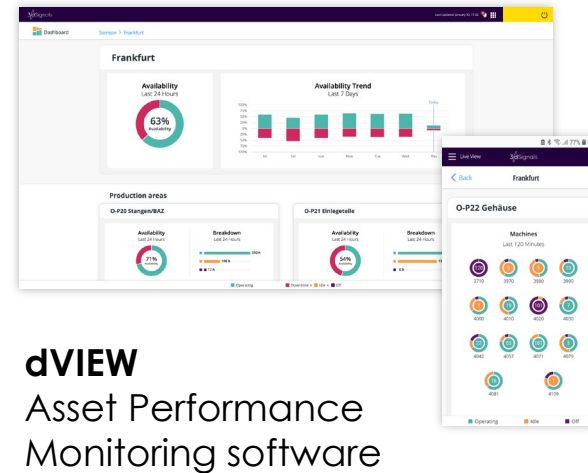
## The Solution – Plug & Play Digitalization

# 3d Signals – Welcome to the Digital Era

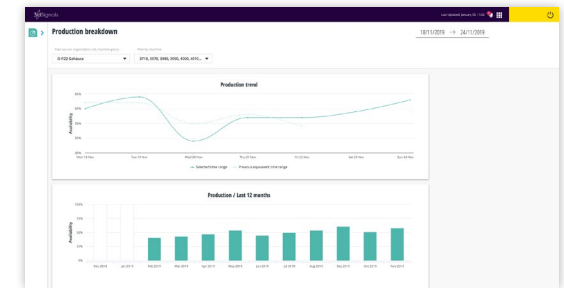
- In a few hours  
**Digitalization**



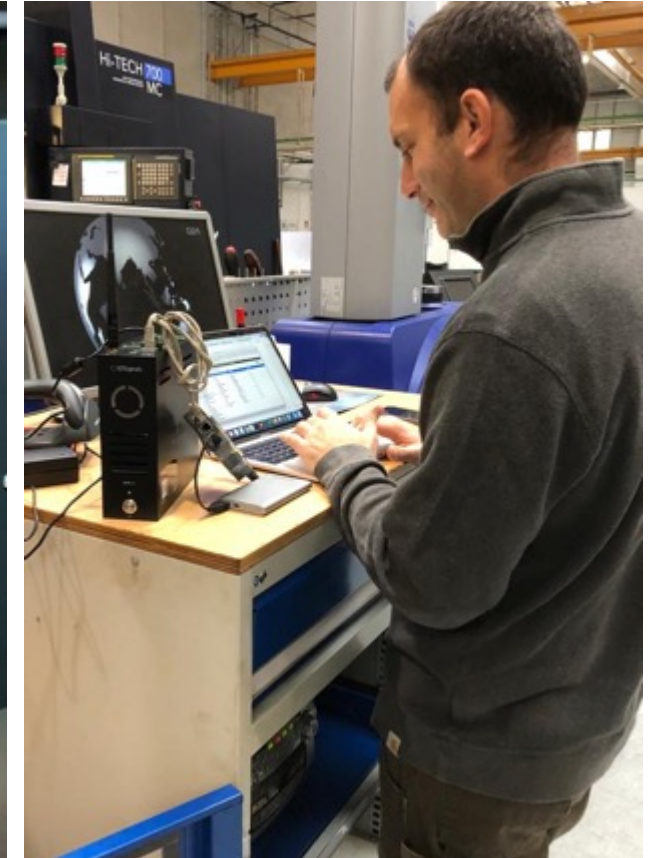
- From day one  
**Business Intelligence**



- Within 2-3 months  
**Proven Productivity improvement**



# Connecting a Machine within Hours



If You Can  
Measure It,  
You Can  
Improve It



# Key Advantages



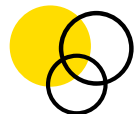
## **Hassle Free**

We do everything



## **Fast Insights**

Results within hours



## **Interoperability**

One dashboard for all machines



## **Accuracy**

The sensors don't lie



## **Security**

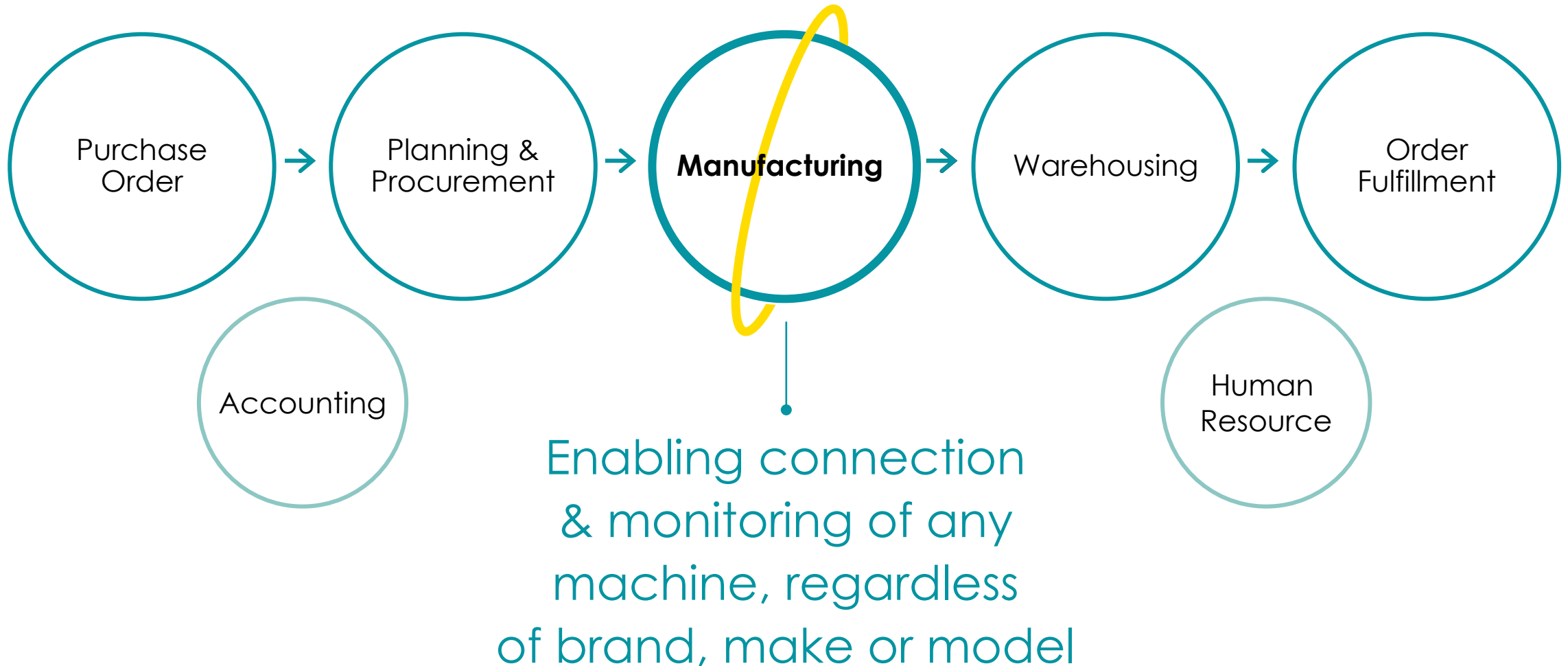
No digital connectivity with machines



## **Growing Value**

New capabilities on existing hardware

# Enabling Connection of the Shop Floor to ERP





# Case Study – SAMSON AG

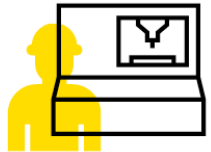
# Case Study – Samson AG

- >\$600M revenues
- >4,000 employees
- 18 sites around the world
- Manufacturing control valves, regulators and accessories for process control
- 3d Signals solution installed on >100 machines, in 5 different manufacturing sites
- Multiple users in the organization, from the shop floor to the board room

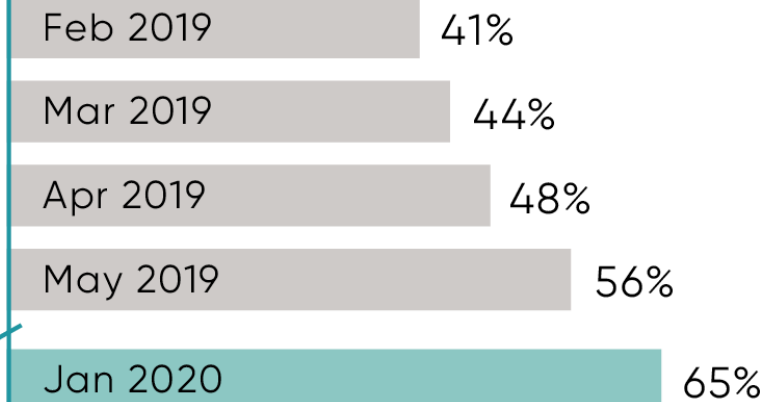


# Improve Machine Availability

## EARLY ADAPTOR



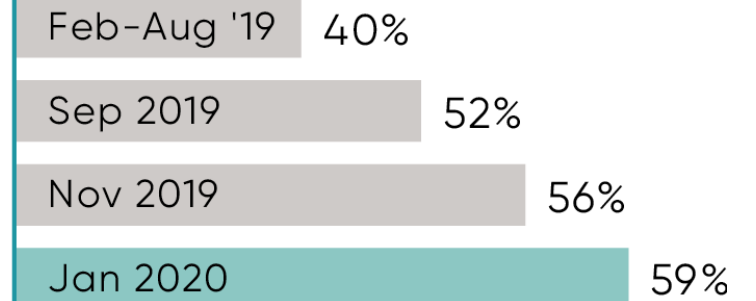
Production  
floor 22



**+36%** in 4 months  
**+58%** in 12 months



Whole  
factory



**+48%** in 12 months

# Reduce Manpower Costs

**EARLY  
ADAPTOR**

Production  
floor 22

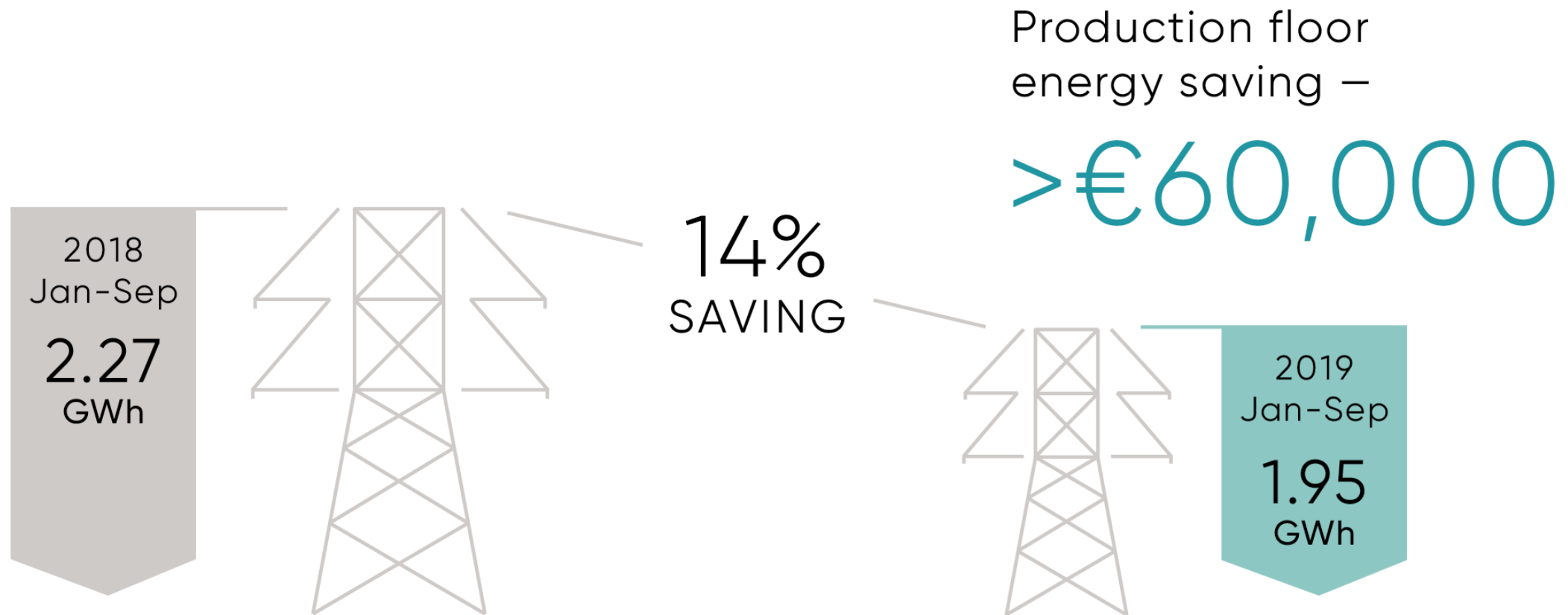
Cancelled night  
shift of temporary  
workers

Estimated saving

€700,000/year

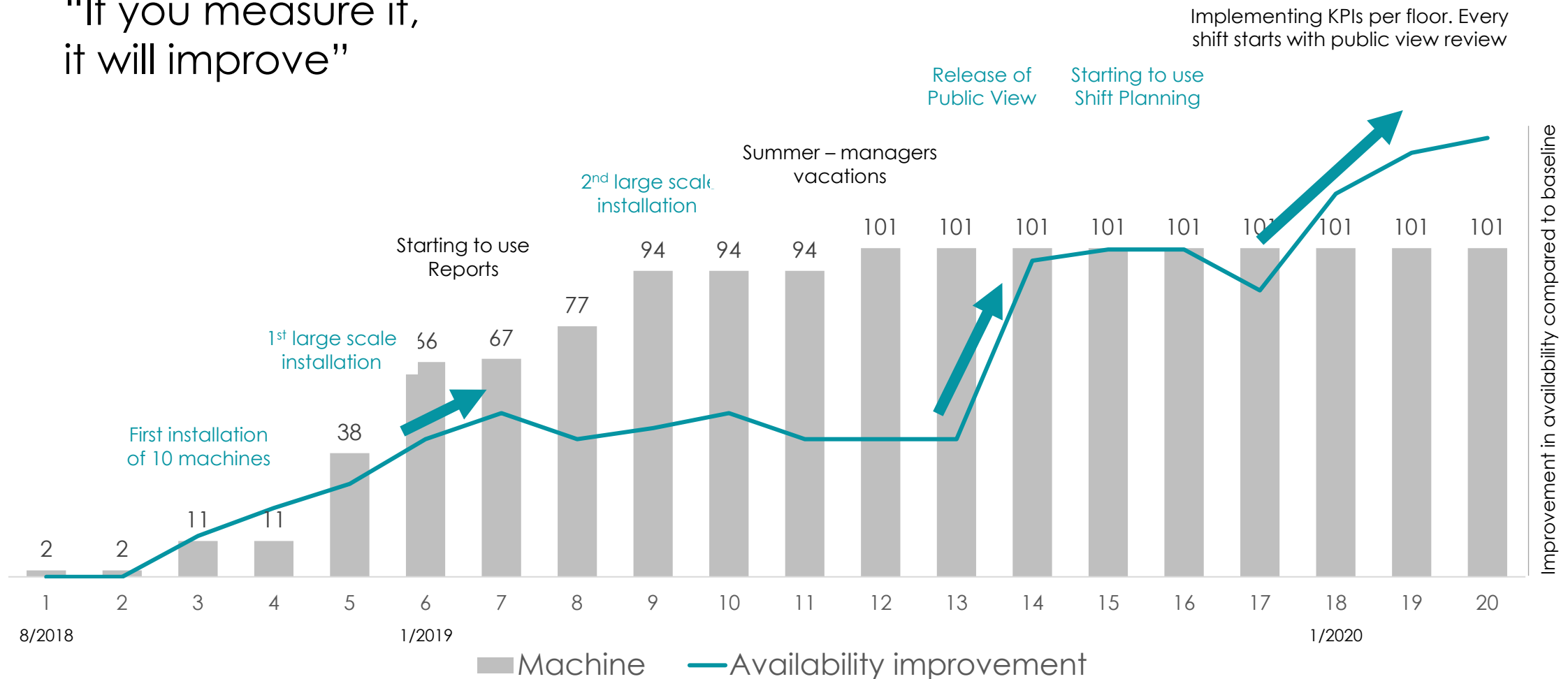


# Reduce Energy Consumption by Preventing Machine Idle Time



# Upscaling Leads to Improvement Leaps

“If you measure it,  
it will improve”



**Dr. Andreas Widl**  
CEO



SAMSON employs more than  
4000 people worldwide,



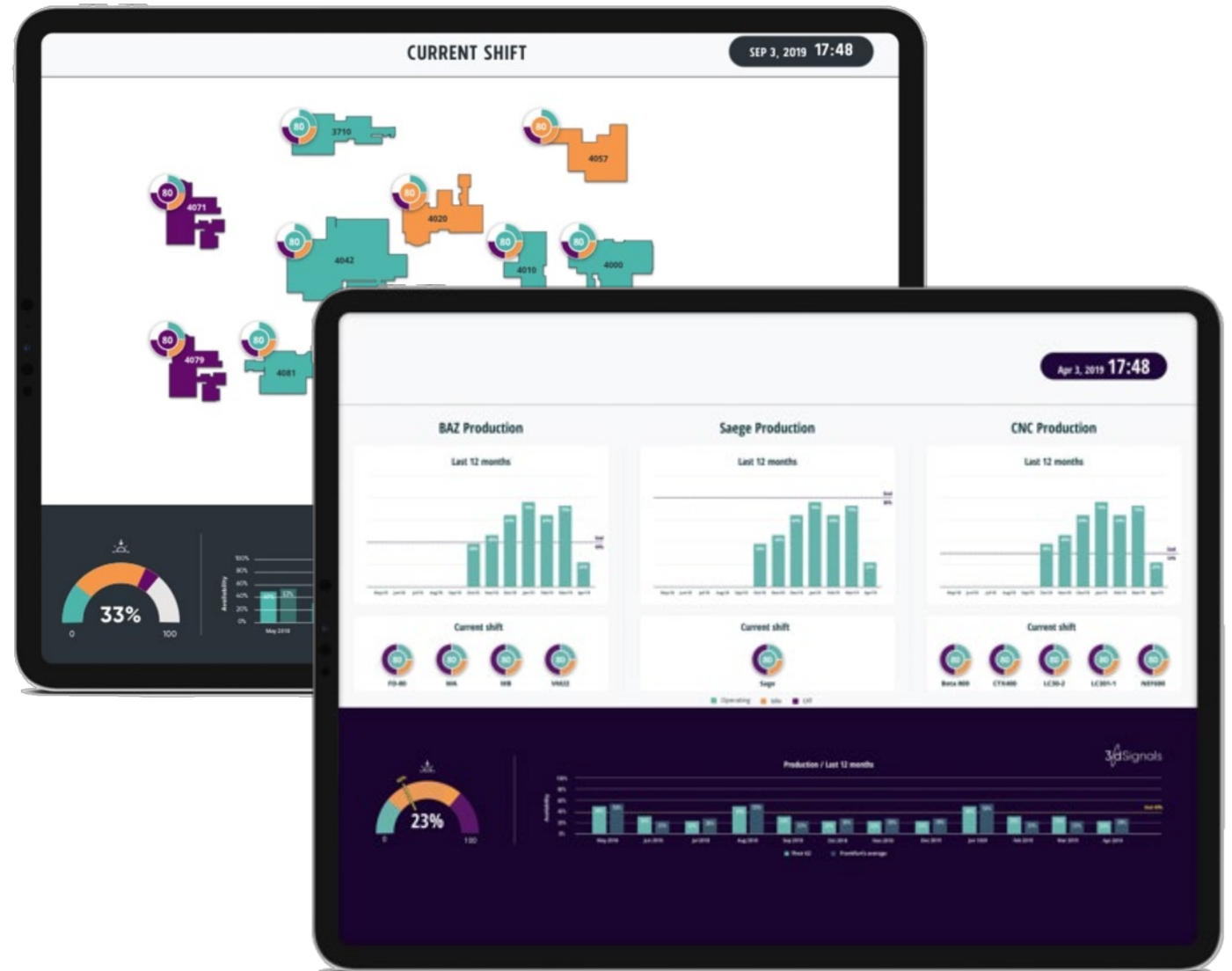
# Product Highlights

# Public View

[Real-Time](#) > History > Alerts > Vs. Plan > Optimization

Real-time visualization of a production area, available as part of dView, or on a large public screen

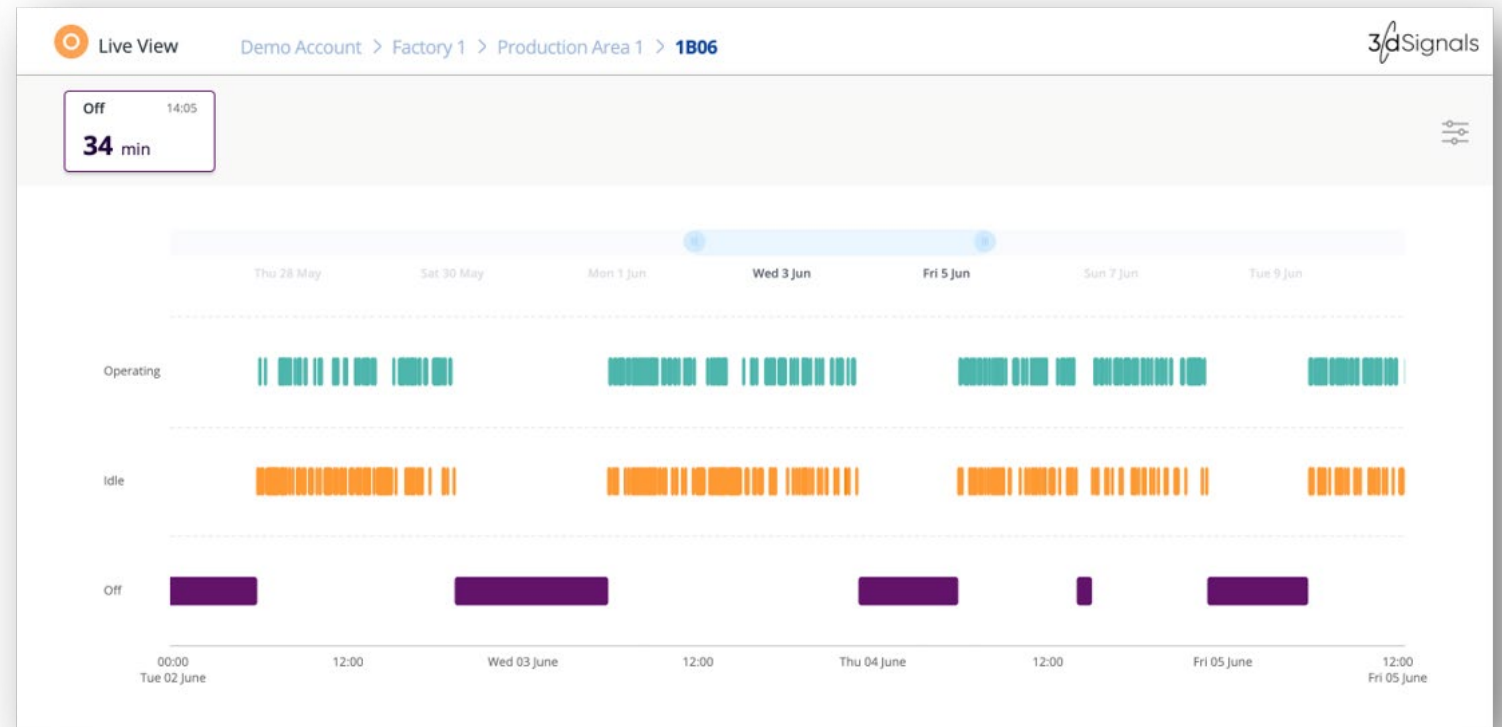
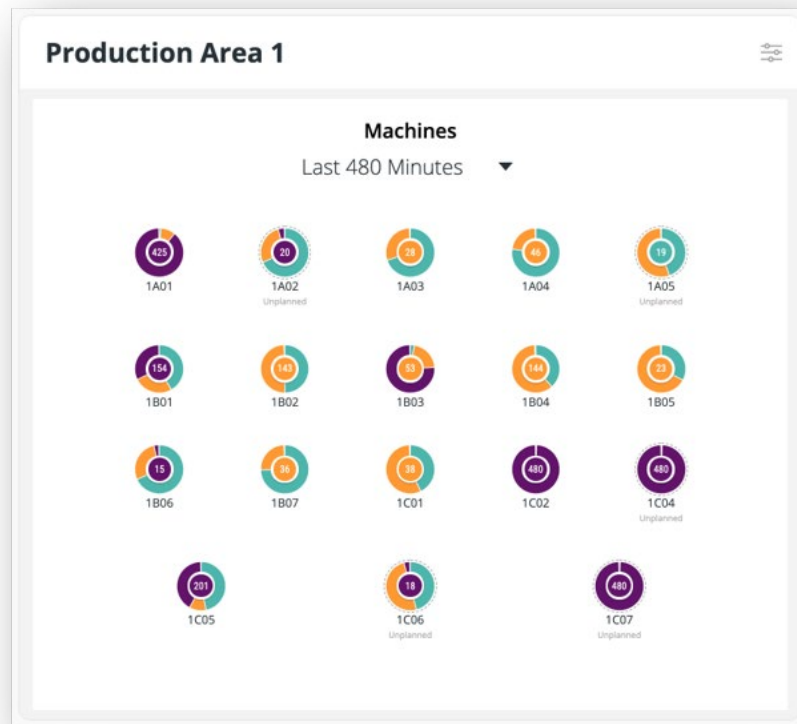
- Enhancing transparency and motivation to meet common goals
- Selection of one out of several alternative views, based on manager's preference



# Live View

[Real-Time](#) > History > Alerts > Vs. Plan > Optimization

## Real-Time machine performance Monitoring

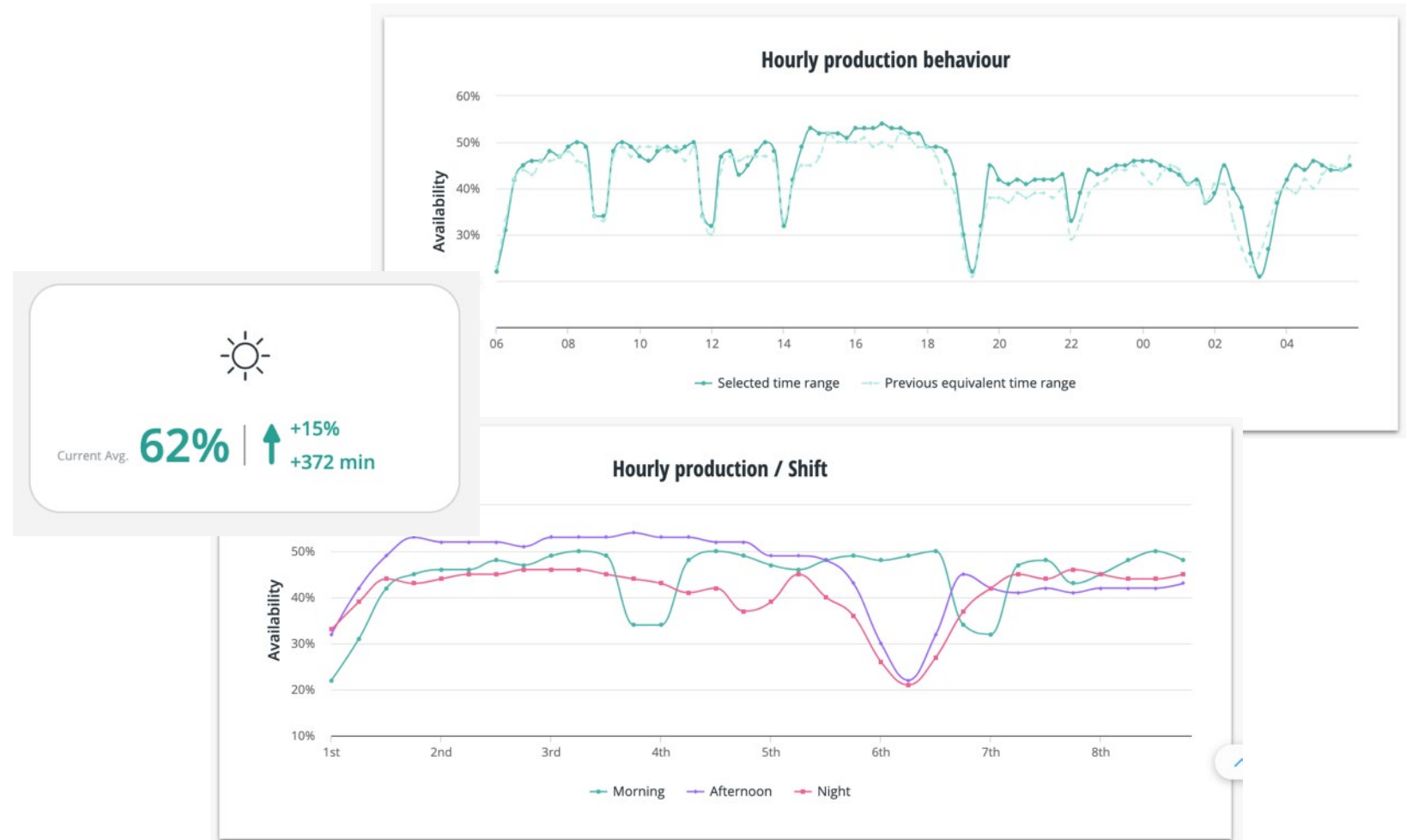


# Reports

Real-Time > [History](#) > Alerts > Vs. Plan > Optimization

Identify trends and make comparisons

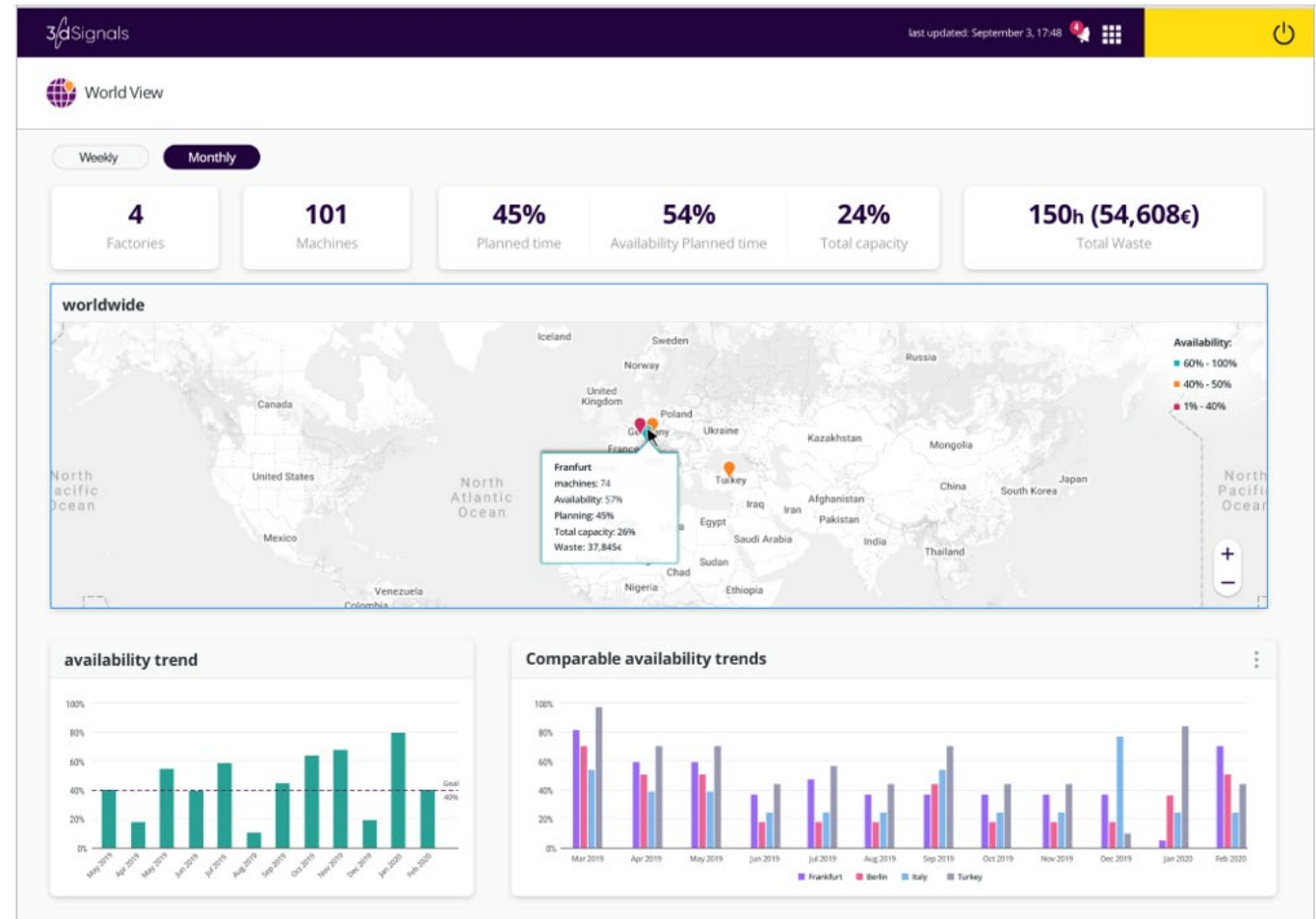
- Machine vs. machine
- Floor vs. floor
- Shift vs. shift
- Time frame vs. previous
- Etc.



# World View

Real-Time > [History](#) > Alerts > Vs. Plan > Optimization

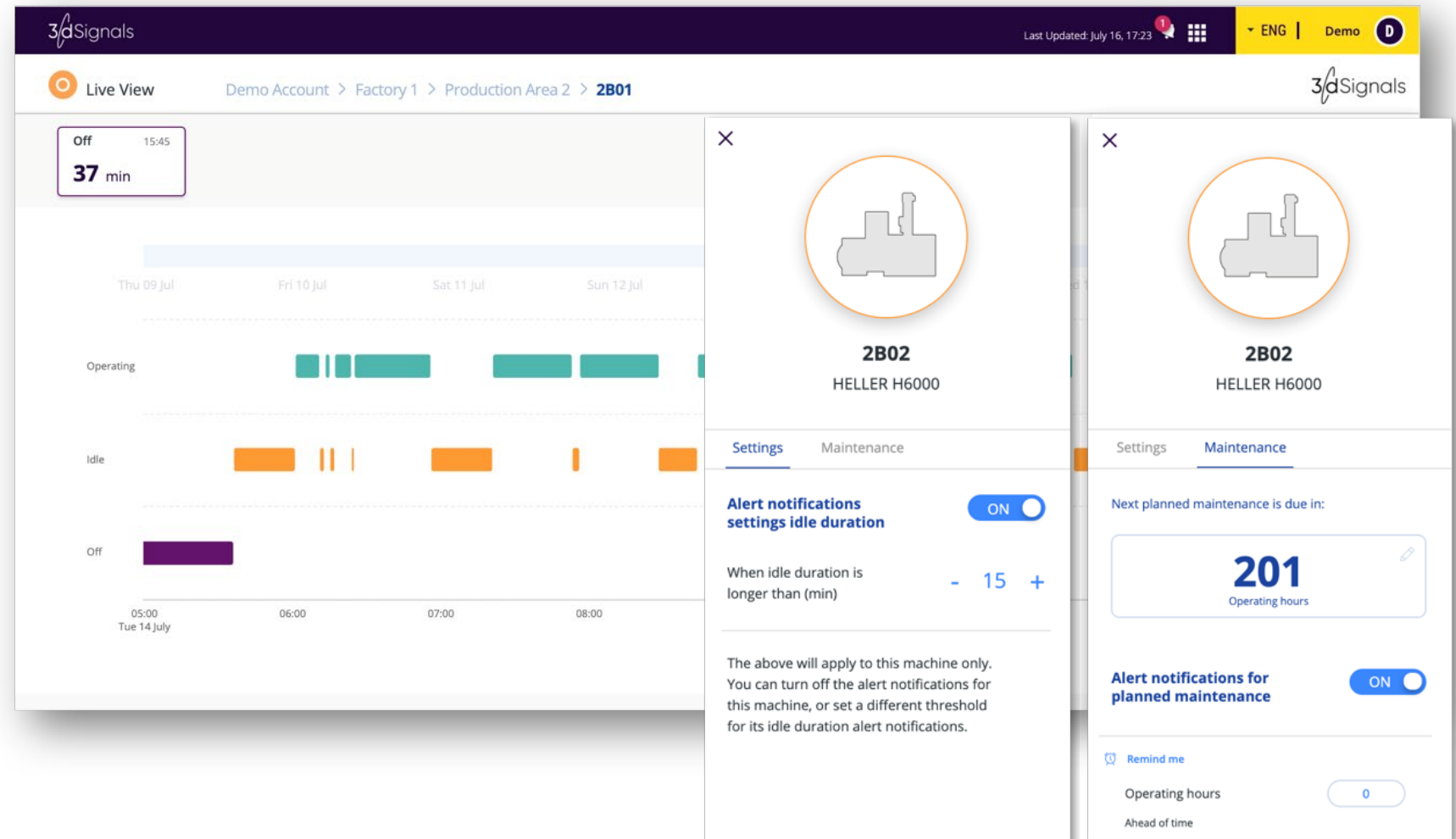
- A dashboard to monitor all your sites
- A bird's eye view of your organization's availability, utilization and waste parameters
- Consolidated and per-factory data in a single view
- Weekly and monthly resolution



# Alerts

Real-Time > History > Alerts > Vs. Plan > Optimization

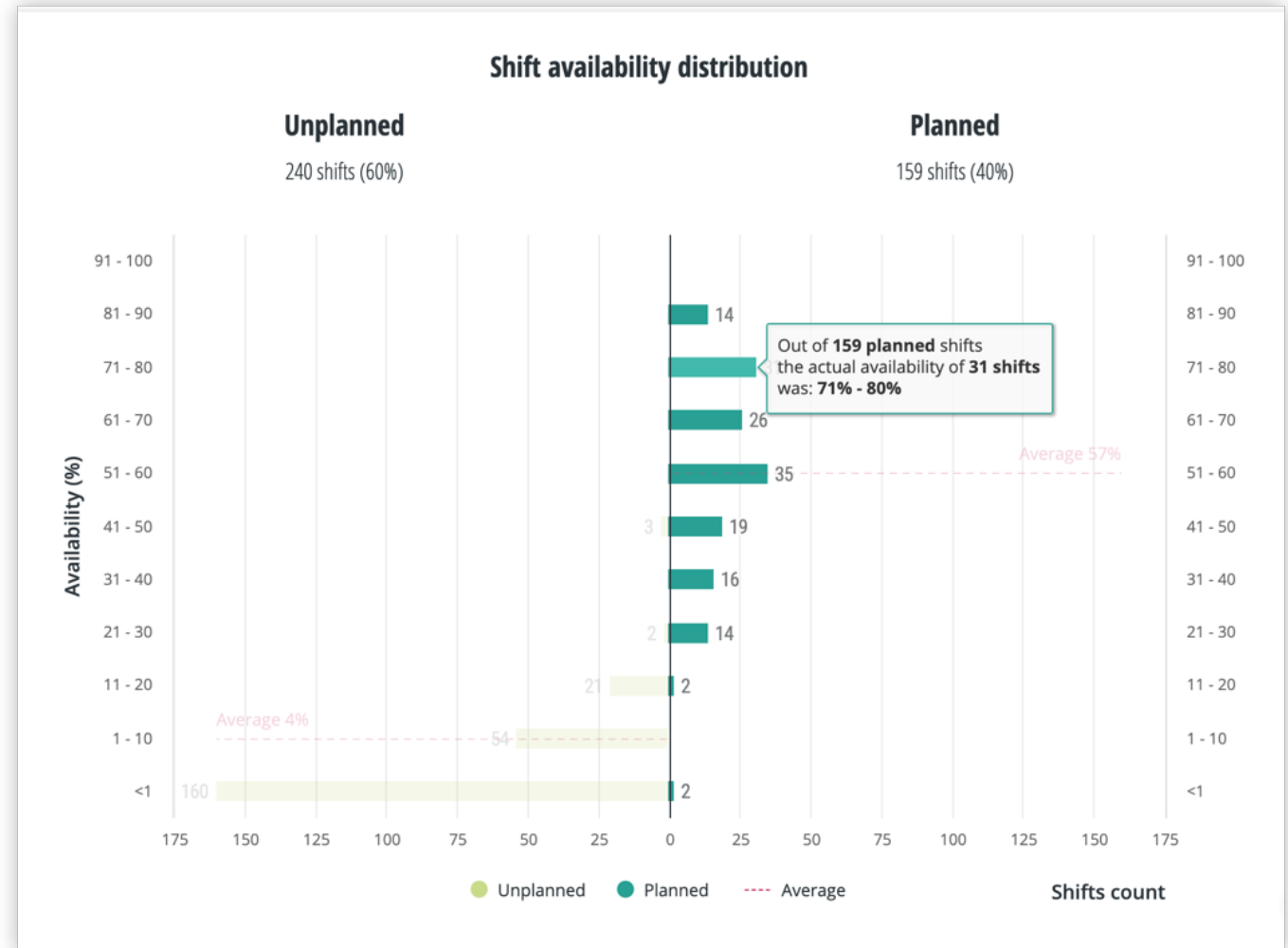
SMS notification for long idle durations based on personal specifications



# Actual vs. Planning

Real-Time > History > Alerts > Vs. Plan > Optimization

- Shift planning compared to actual production, highlighting:
  - Planned shift which were underutilized
  - Overtime during unplanned shifts

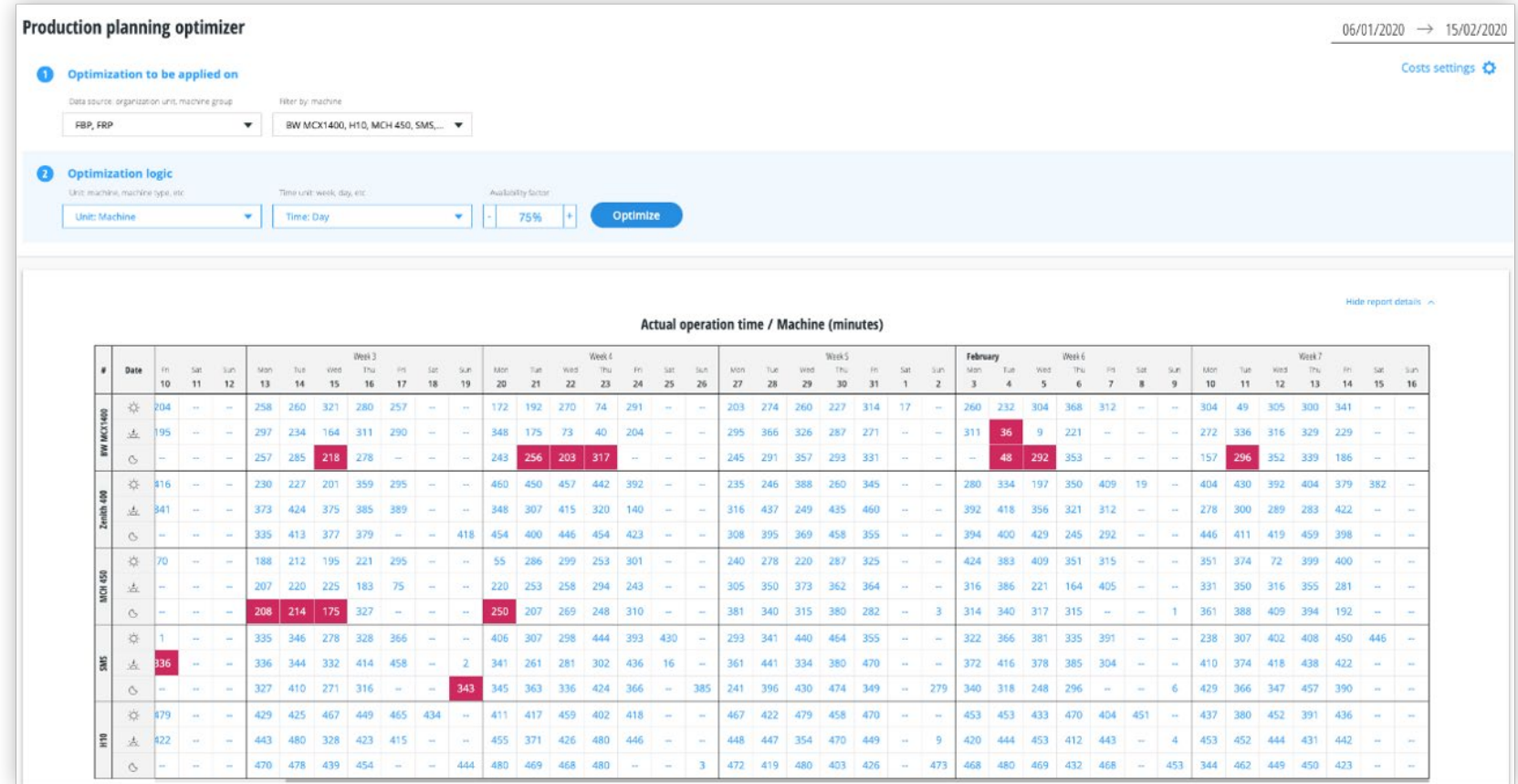


# Optimization Tools

Real-Time > History > Alerts > Vs. Plan > **Optimization**

Save money through better planning:

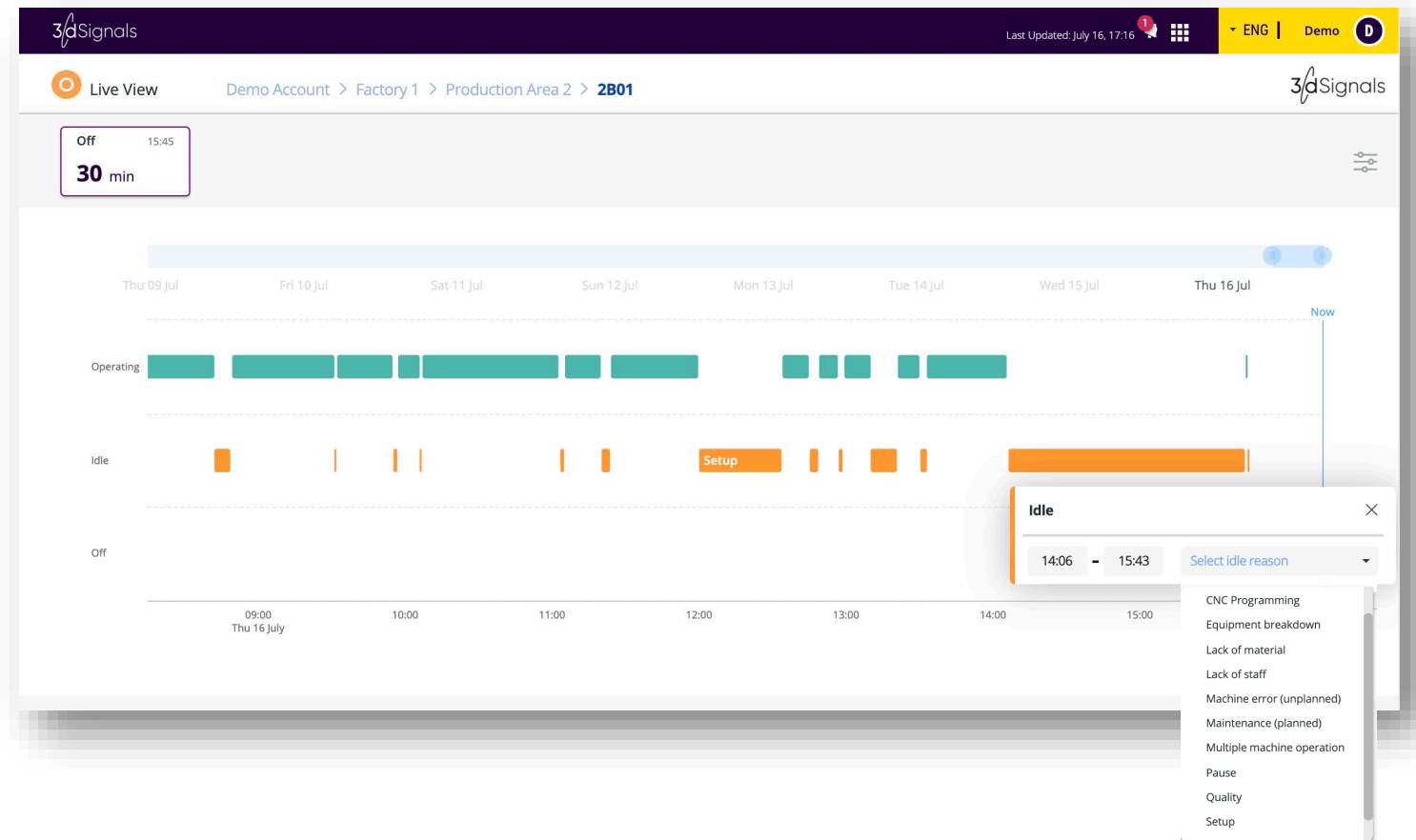
- Underutilized shifts are highlighted
- Wasted cost is calculated based on preset shift cost, for shifts that could have been combined with other shifts / eliminated



# Idle Reason Analysis

Real-Time > History > Alerts > Vs. Plan > [Optimization](#)

- Allows employees on the shop floor to input reasons for downtime, whether planned or unplanned
- Enables further analysis to identify bottlenecks and improve operations
- Reasons are customizable per customer

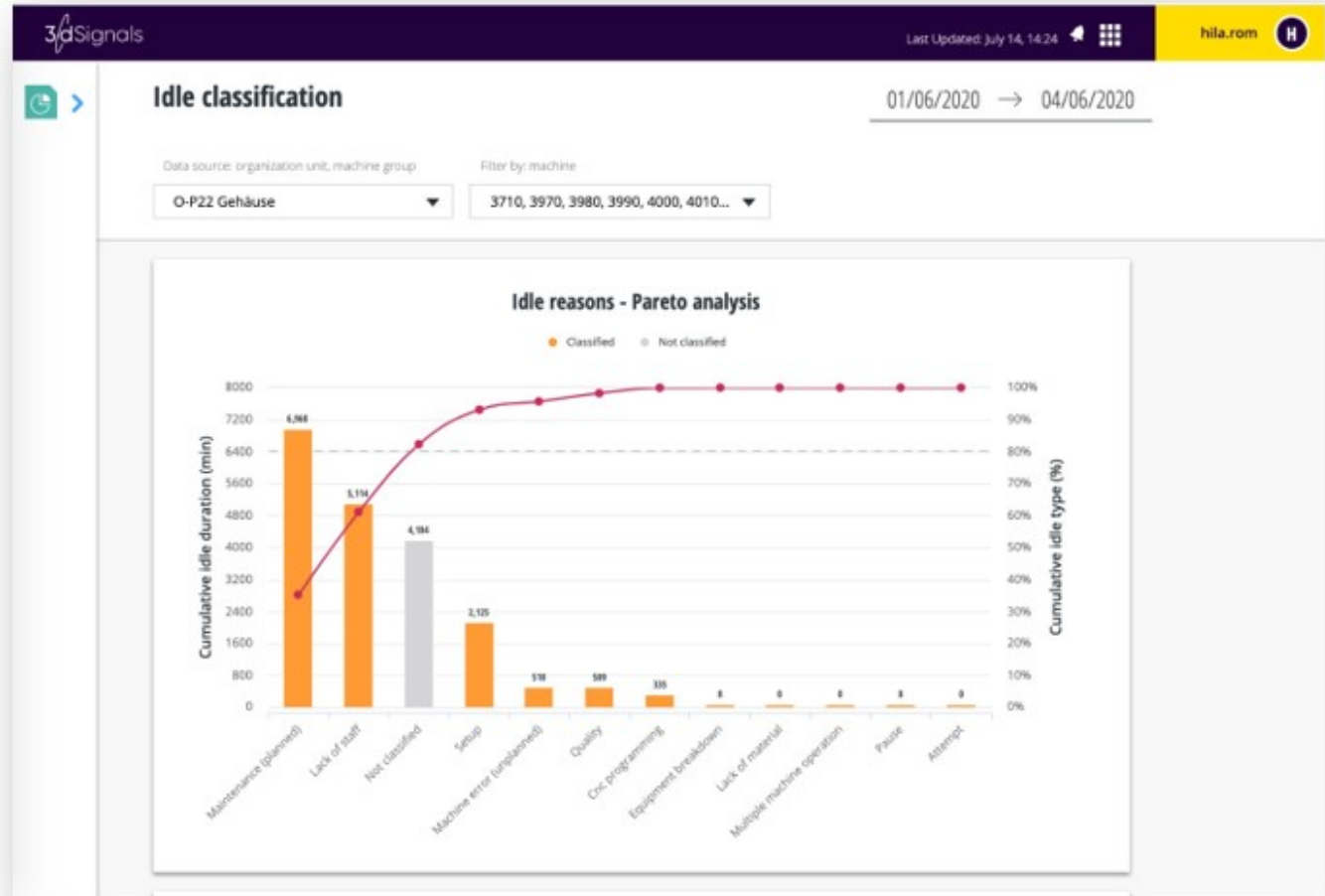


# Idle Reasons Report

Real-Time > History > Alerts > Vs. Plan > [Optimization](#)

Pareto analysis of idle reasons to identify the 20% of reasons that cause the 80% of idle durations

- Per machine or group of machines
- Per idle reason





About Us

# About Us

- Founded in **October 2015**
- Raised **\$27M** to date
- **3** approved & pending **patents**
- Top 100 Europe Award winner
- 2020 Technology Pioneers
- Members of the **Open Industry 4.0 Alliance**

## Our investors:



# Your Factory is Industry 4.0 Ready

## Let us help you realize it

- 11 sites across Germany
- Additional sites in Europe, US & Israel
- >250 machines
- $\pm$  50 machine brands
  - Heller
  - DMG MORI
  - AXA
  - OKUMA
  - Trumpf
  - METRUS
  - Chiron
  - INDEX-TRAUB
  - MIKRON
  - Etc.



Germany sites

# Management Team



**Ariel Rosenfeld**  
CEO  
Prev. M-Systems  
B.Sc. I&M Eng.



**David Koren**  
VP R&D  
Prev. M-Systems, SanDisk  
B.Sc. E. Eng.



**Yoni Yuval**  
VP Sales  
Prev. Lead-IT, Valire  
MBA



**Danya Golan**  
VP Marketing  
Prev. SolarEdge  
M.Sc. Neurobiology



**Yifat Ferber**  
VP Product Strategy  
Prev. SAP  
M.Sc. Technology & IS



**Galia Kedmi Fragman**  
VP Business Development  
Prev. SanDisk, SRL Group  
MBA



**Markus Löhr**  
MD, 3d Signals GmbH  
Prev. HKS  
Dipl.-Ing. (FH) Mechanical Eng.

# Advisory Board



**Dr. Andreas Widl**

Vorstandsvorsitzender, SAMSON AG,



**Claus Garnjost**

Ehemals Leistritz AG, DMG MORI AG,  
Heller Maschinenfabrik GmbH



**THANK YOU.**

[3dsignals.com](https://3dsignals.com) | [info@3dsignals.com](mailto:info@3dsignals.com)