



# Solving Industrial Sensor Data Integrity with Aperio

Sensor data is everything – and its quality is crucial

CONFIDENTIAL AND PROPRIETARY

Any use of this material without specific permission of Aperio Systems  
is strictly prohibited

# Data is key to competitive advantage in industrial operations – but data volumes are growing exponentially, and sophisticated tools are required for success

## Data is growing exponentially



90% of all industrial data was generated in the past 2 years

## Unreliable real-time operational data...



20% of operational data estimated to be unreliable from source

## ... leads to financial losses, lost opportunities, and safety and security risk exposure for industrial operations



double-digit annual USDm losses from data quality issues



more than 95% of operational data not leveraged



over 10% of asset downtime directly due to sensor data issues

# What is Aperio?

A **fully scalable** solution that ensures **sensor data integrity** unlimited across the entire OT environment



## Key characteristics



Machine learning to measure and validate sensor signals.



Ensure validated, reliable, clean, and authentic sensor data.



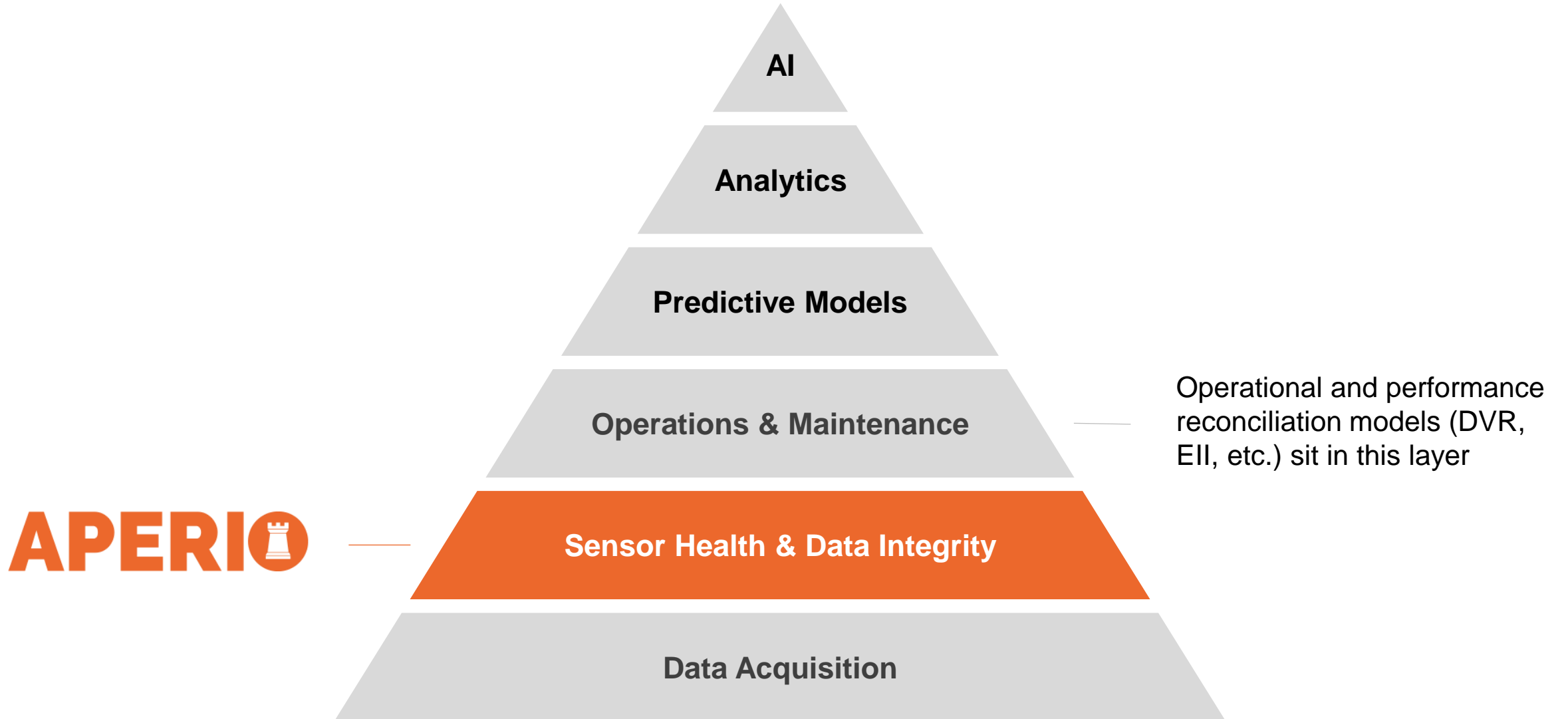
Monitor sensor reliability and dramatically improve data quality.



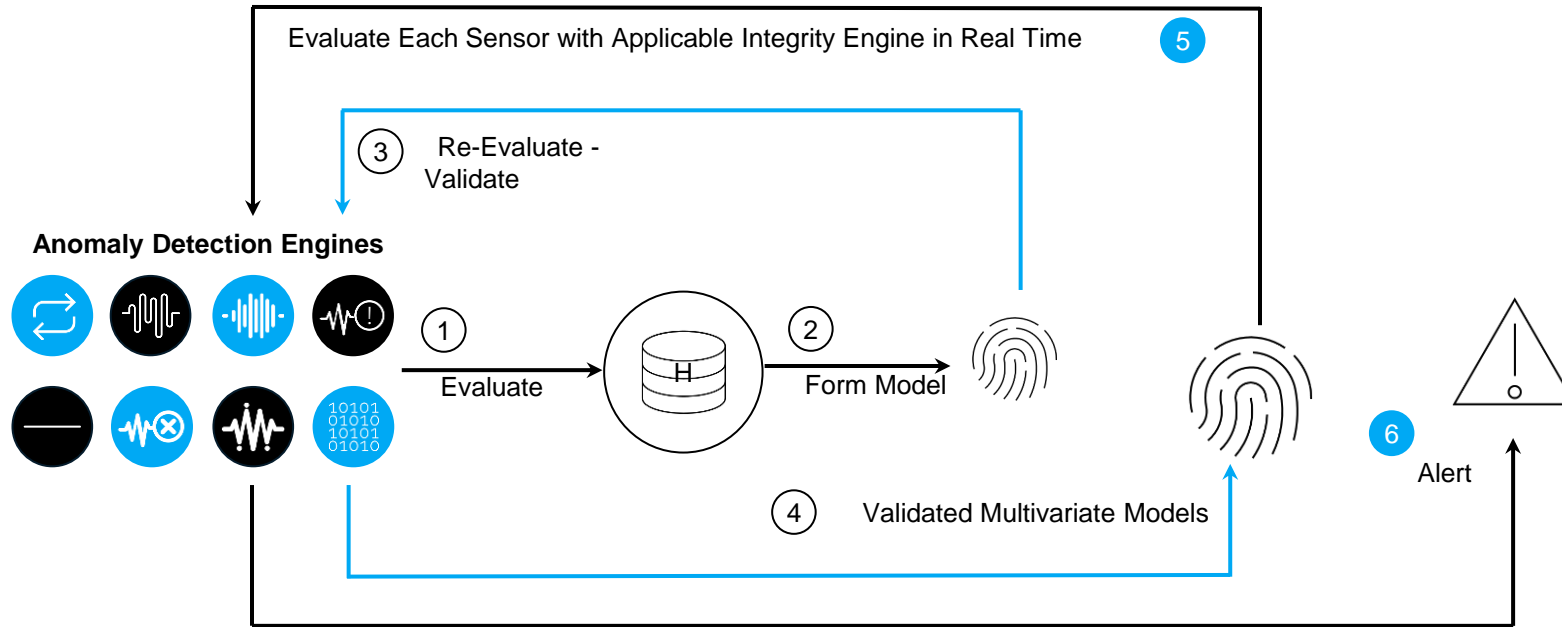
Protects data against manipulation and tampering.

# Aperio is uniquely positioned in the industrial data value chain – enabling and adding value to other products in the ecosystem

---

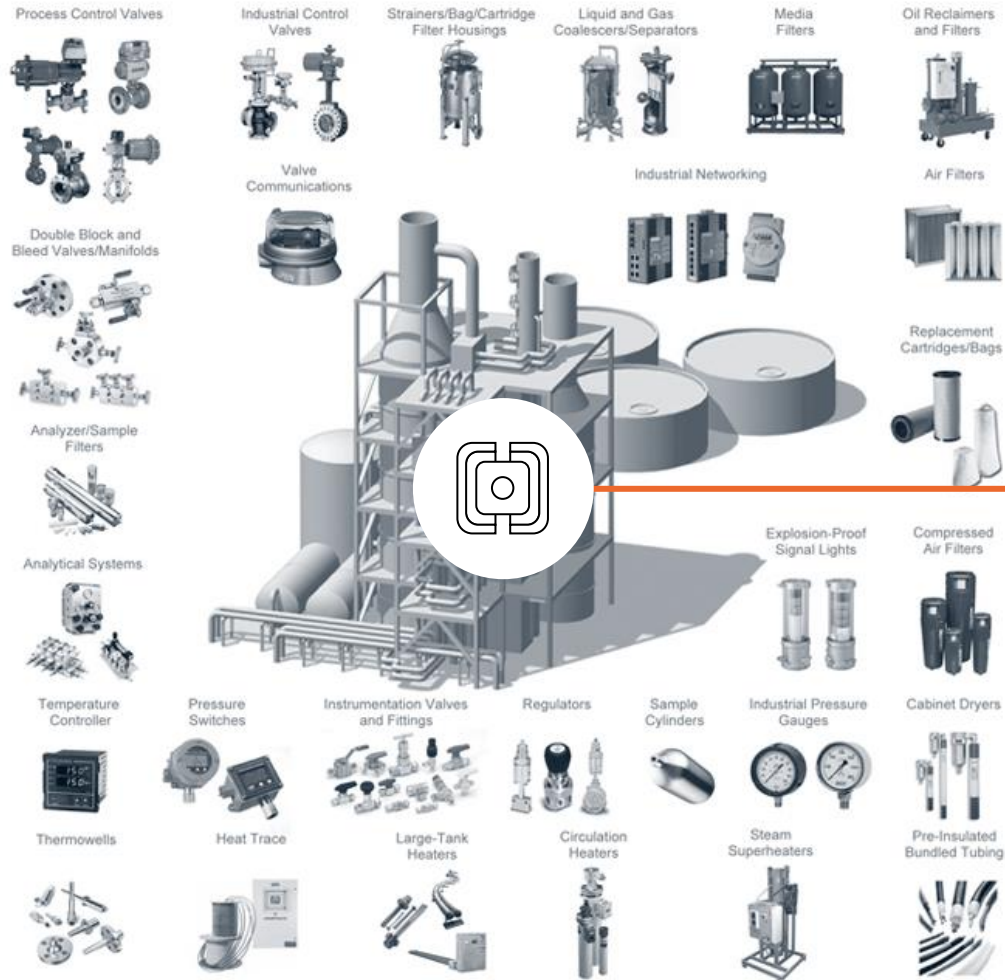


# Sensor signal fingerprints and alerts

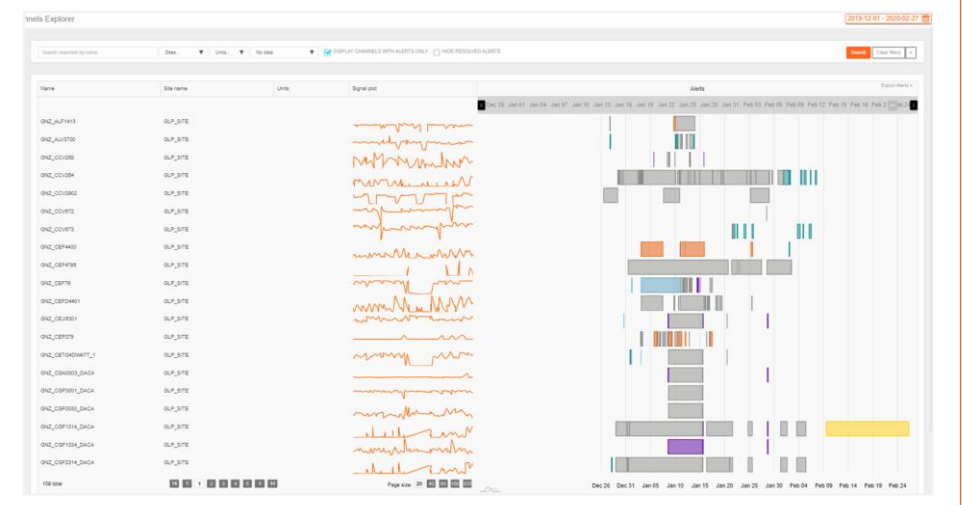
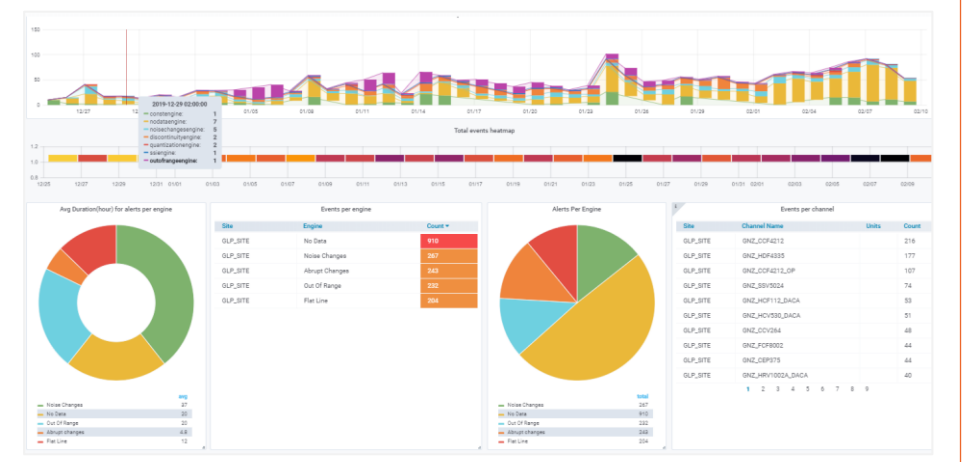


- Evaluate Sensor Signal Data ①
- Form Multivariate Models - Fingerprints ②
- Re-Evaluate and Validate Fingerprints ③
- Establish Active Fingerprint ④
- Evaluate Each Sensor with Applicable Integrity Engine - In Real Time ⑤
- Alert on Faulty Sensors and Data Anomalies - in Real Time ⑥
- Integrity Engines Retrain Every Few Weeks \*

# Aperio's solution provides a strong data integrity foundation which enables real-time data-driven operations and decision making in industrial environments

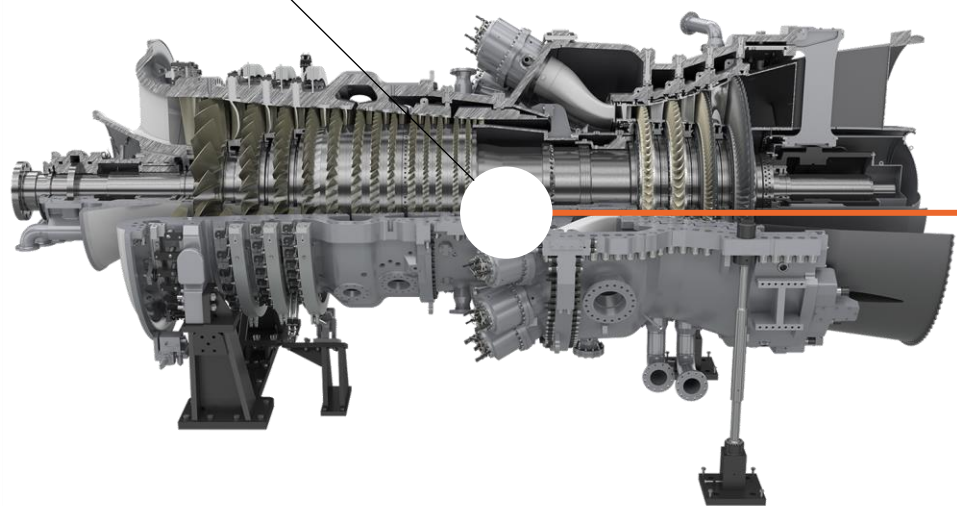
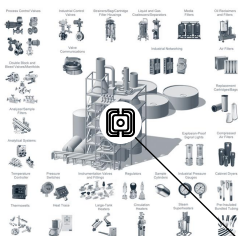


**APERIO**

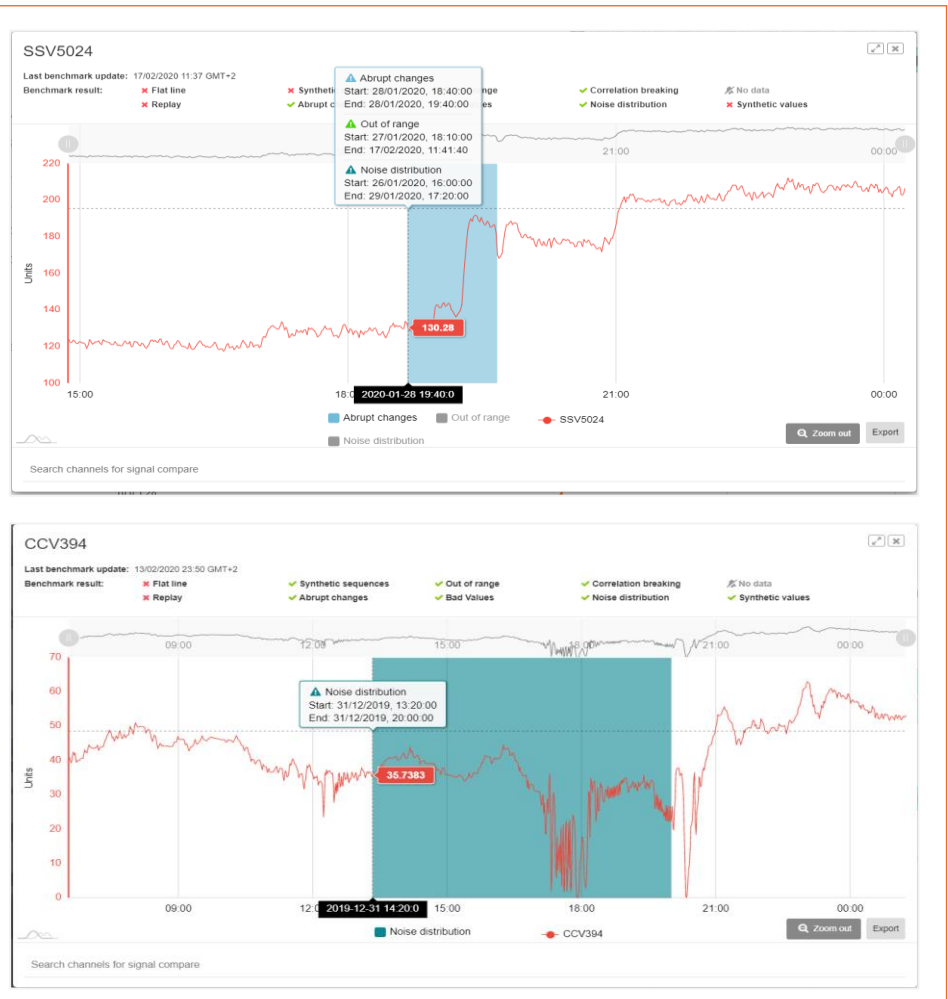




# Users can drill down in the asset framework of sites, equipment and components, and focus on individual or grouped sensor anomalies for further investigation



**APERIO**



## Customer roadmap to ROI delivered by Aperio

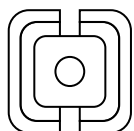
Aperio's data integrity solution is easy to deploy and scale, requires zero manual configuration and creates immediate tangible value

### Operations profile:

Global process manufacturing



30 assets



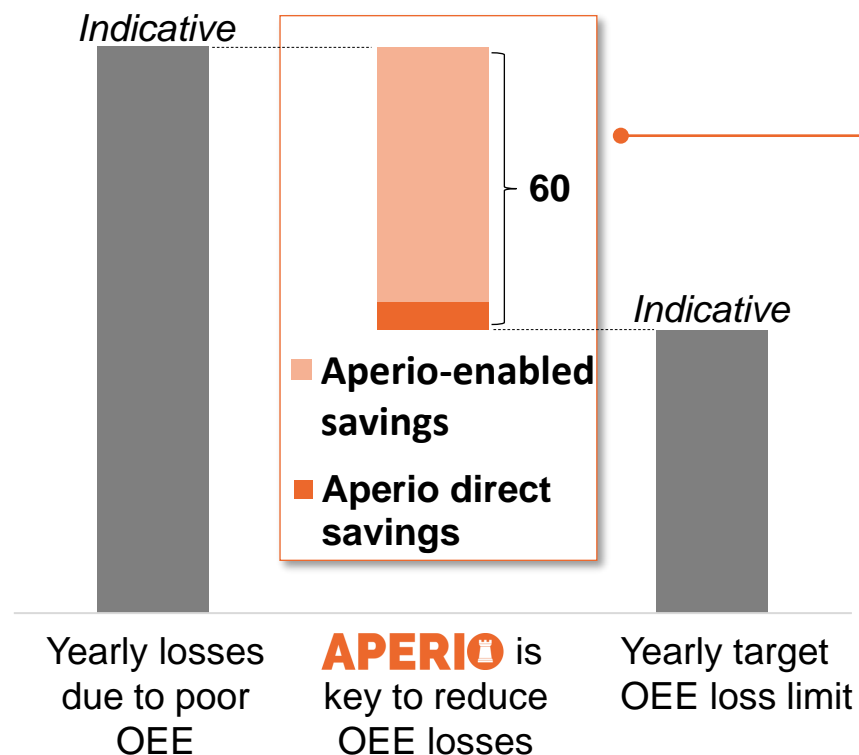
1.6m tags



3 Historians

**Case:** Unplanned outages from sensor issues reducing Overall Equipment Effectiveness (OEE)

*EBITDA losses stacking up, USDm*



**Customer overall project ROI expected to be above 5x, with Aperio delivering significantly above this benchmark**

Aperio's solution delivers foundational data integrity to improve Overall Equipment Effectiveness

- **direct impact** and savings through sensor health monitoring and anomaly detection
- **indirect impact** and savings through real time data quality improvements enabling much better predictive maintenance and advanced analytics results