

E&T Intelligence

Transforming heavy industries with AI-powered self-driving and precision manipulation technologies to boost productivity and ensure safety.



Who we are



- **E&T Intelligence** is a technology company dedicated to revolutionizing heavy industries with AI-enabled self-driving and precision manipulation solutions. Our innovations enhance efficiency and safety across sectors such as metallurgy, construction, mining, and port operations.
- **We can** provide remote-control systems, self-driving software systems and total solutions, we can also modify the existing vehicles into autonomous or remote control, depending on clients' needs.
- Our solutions can integrate to clients' business process seamlessly.

Core Technology



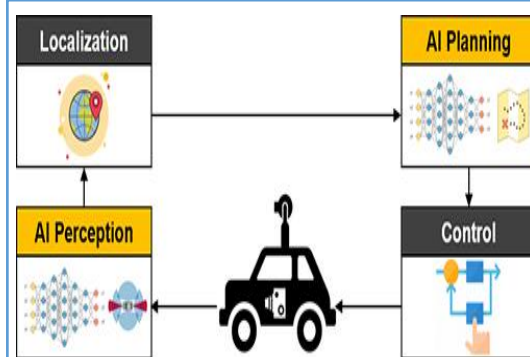
Self-Driving for Industrial Applications

At the forefront of low-speed self-driving technology, we focus on creating specialised solutions for non-open-road industrial applications, bringing our mobile manipulation systems to spaces where traditional vehicles can't go.



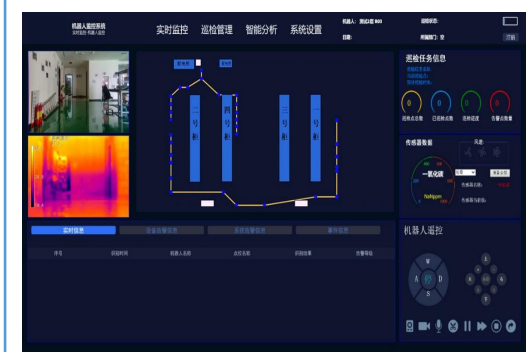
Tele-operation of Vehicles and Robots

Leveraging advanced remote driving technology, our system enables control room operators to manage vehicles and robots through real-time onboard camera feeds, allowing for timely remote intervention that enhances safety and boosts productivity.



AI-Driven Perception and Control

Advanced algorithms enable sophisticated understanding of and interaction with the environment. Deployment of AI at the edge ensures immediate response and decision-making, as well as enhanced data security.



Management of Vehicles and Robots

We offer a comprehensive remote management solution tailored to your specific application needs. It enables real-time fleet dispatching and monitoring, high-precision map updates, and data analysis.

Case 1: Remote driving of copper smelting charging truck

We implemented and deployed remote driving system at Copper smelting charging truck in **Jiangxi Province, China.**



Video

Case 2: Remote driving of heavy Forklift

We deployed a remote driving system in a heavy forklift with an 18-ton payload in a steel smelting plant in **Yekaterinburg Russia**.



Video

Case 3: Fully autonomous driving and automatic operation of steel slag transport vehicle

- Successfully Modified 5 heavy-duty industrial vehicles in **Guangxi, China**.



Technical Specifications:

- Control Mode: Dual (**Self-Driving and Tele-operation**)
- Dimensions: Length 17m, Width 5m, Height 3.5m
- Weight: 30 tons (Self-Weight)
- Capacity: 70 tons (Payload)
- Engine: Internal Combustion Engine (ICE)
- Navigation: Integrates RTK and Visual Tracking Technologies
- Tele-operation Cabin: Customized by our team

Case 3: Fully autonomous driving and automatic operation of steel slag transport vehicle

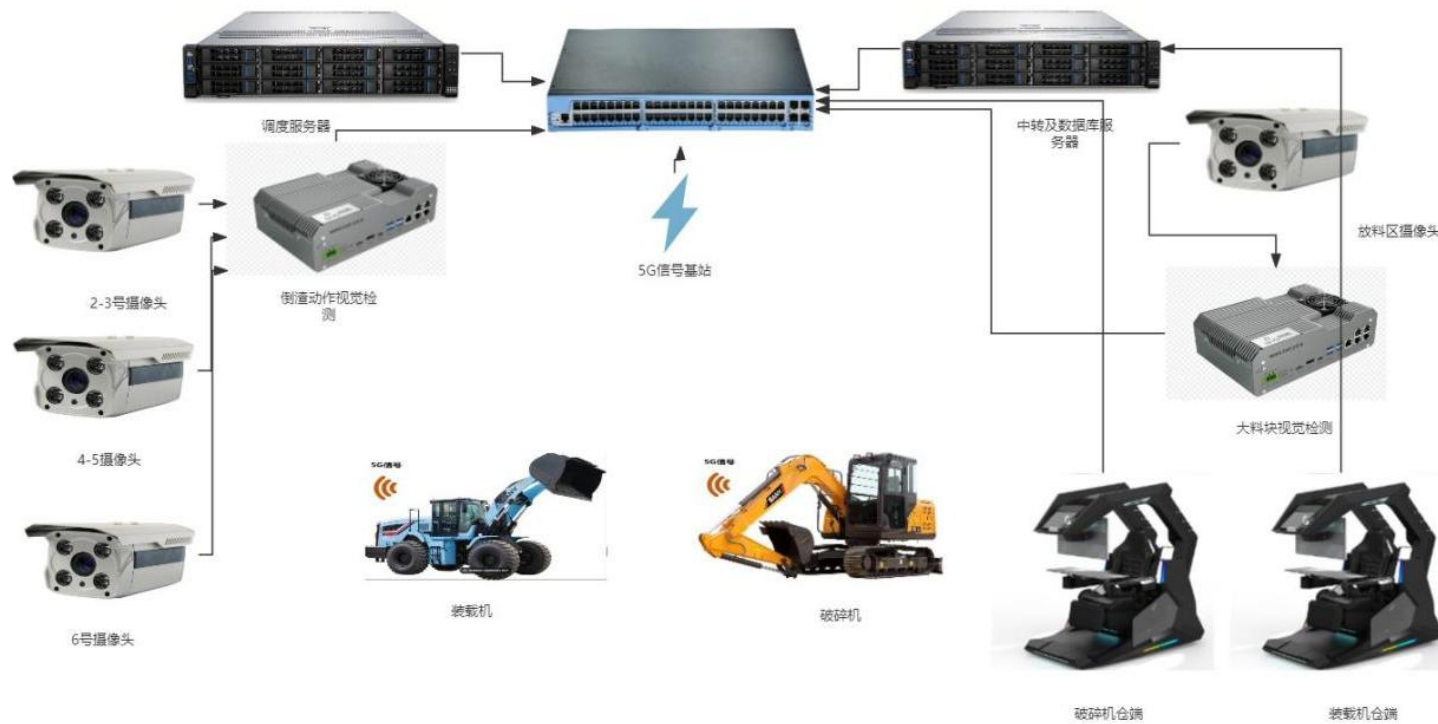


Under normal circumstances, workers only need to supervise the vehicles through a monitoring system and do not need to drive them, especially at night, which reduces personnel fatigue and reduces driving risk.

Video-fully autonomous driving at night

Case 4: Autonomous Front Wheel Loaders (AFWLs) and Remote controlled excavator in Copper Smelting Plant

We are deploying **4 electric AFWLs** and **1 remote controlled excavator** in a copper smelting plant in **Hubei Province, China**.

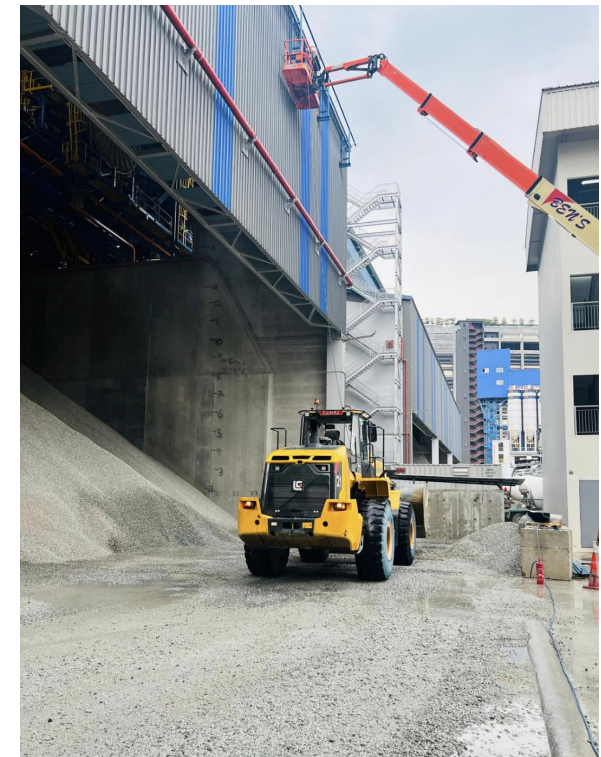


Case 5: Autonomous Front Wheel Loaders (AFWLs) in construction industry

We are deploying an electric AFWL in **Singapore**.

Develop and deploy autonomous front wheel loaders (AFWLs) to transport raw materials (aggregate) from stockyard bunker to conveyor belts, filling silo materials hopper ***round the clock***.

- Leverage self-driving technology to ensure precision and efficiency in material handling
- Improve overall operational efficiency while maintaining high safety standards
- Support the factory's transition to a smart and green manufacturing facility
- **Reducing reliance on labor**





Thank you.

We are ready to co-create innovation with you, ensuring seamless integration and support every step of the way.

Sherry Huang
sherry_huang@et-intelligence.sg

E&T Intelligence Singapore. Pte. Ltd.
150 Beach Road, #28-05 Gateway West, Singapore 189720