

Transforming **competences** and **experience**  
into **engineering solutions**.



[www.cmdengine.com](http://www.cmdengine.com)





For over 30 years CMD (Costruzioni Motori Diesel SPA) has been involved in design, prototyping and development of engines and solutions for automotive, marine and aeronautical fields.



**MACHINING  
COMPONENTS**



**MARINE  
ENGINES**



**AVIATION**



**ENERGY**





## A LONG ITALIAN HISTORY

Our history reminds us of the immense progress we have made as a Company.

1930

Corrado Negri and Italo Balbo's transoceanic flight

1971



Launching "Fratelli Negri Motori"

1979

First collaboration with FIAT

1984

First FNM marine diesel engine on the market

2013 - 14

Elite Program

2000

Business diversification and development

1991



From FNM to CMD (Costruzioni Motori Diesel) S.p.A.



2017

CMD and Loncin Motor Co Ltd becomes business partner

2018

Development Contract with Invitalia: an aeronautical hub in Basilicata region

2022

New customers in Avio and automotive fields

2023/2024

3 STEPS AHEAD

- EWBA Brake Prototypes for the Korean Market
- Qualified Supplier for Lamborghini
- The Certification of the CMD 19 (AVIO) engine has started



# THE COMPANY

## MISSION

CMD leads in sustainable mobility and energy production fields of the future. Crossing over traditional engines boundaries, we offer flexible propulsion solutions, embracing advanced technologies such as electric and hybrid propulsion.

## VISION

CMD involves itself in improving people's life through development of projects for environment and mobility, focusing on safety, innovation, reliability and customization of products.







# THE COMPANY

## VALUES

### INCLUSION AND DIVERSITY

We embrace diversity in all its forms, recognizing the value of diverse perspectives to stimulate creativity and promote a fair and respectful work environment.

### TRANSPARENCY

Open and honest communication, both internally and externally, to build trust among employees, clients, and stakeholders, and facilitate the sharing of information and collaboration.

### ETHICS

Ethics guide every decision and action we take to build a solid reputation, maintain customer trust, and ensure a positive impact on society and the environment.

### SUSTAINABILITY

We adopt eco-friendly practices and technologies to reduce the ecological footprint of production.

### SOCIAL RESPONSABILITY

We contribute positively to the community by participating in social initiatives and actively collaborating with schools and universities.

### FAMILY

The concept of family reflects the attention and mutual support that characterize our corporate culture.

---

CMD is preparing its third ***Sustainability Report***, a voluntary decision born from the awareness about the importance of the Corporate Social Responsibility.

Click [here](#) to download our 2022 Report.



# HIGHLIGHTS



## CORE COMPETENCIES

- Engineering & Prototyping
- Manufacturing and assembly
- Management of complex technological platforms
- Customer support



## STRATEGIC VIEW

- Sustainable processes
- R&D
- Problem solving
- International vision



## STRENGTHS

### INNOVATION

We face the challenges of the future through the culture of innovation, transforming concepts into industrializable products.

### EXPERTISE & KNOW-HOW

Our skills and know-how are key-resources that we offer to customers, not only as products, but also as consultancy and project support.

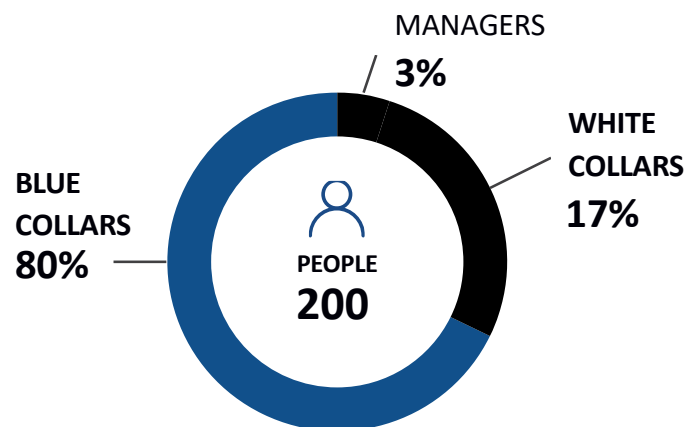
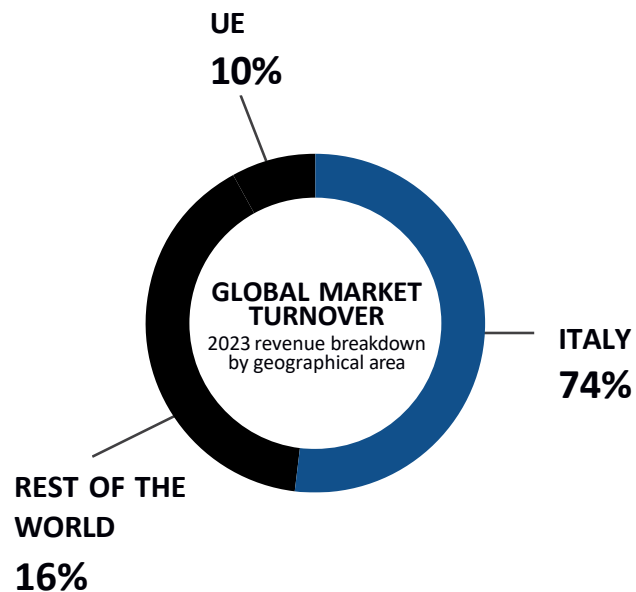
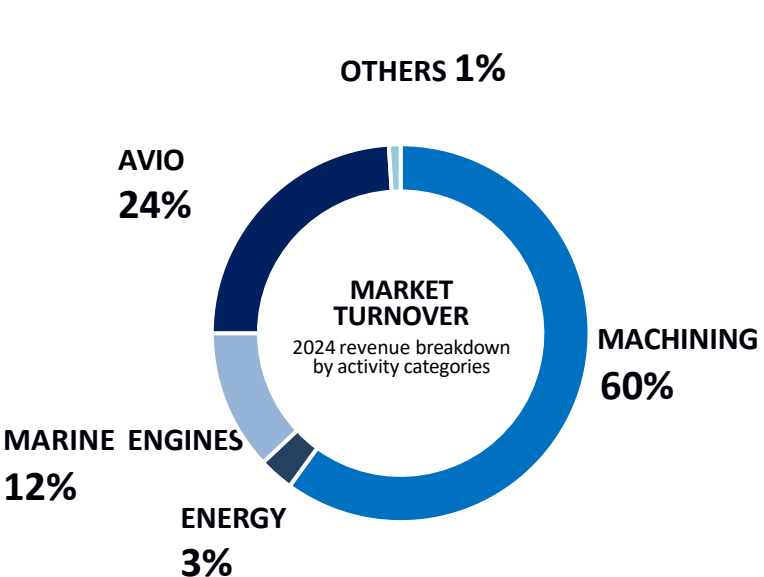
### EVOLUTION AND DIVERSIFICATION

We are committed to developing projects for the environment and mobility, with a focus on safety, innovation, reliability and diversification of solutions.

### LONG-TERM RELATIONSHIP

We have long-lasting relationships with our partners, taking care of each project with passion and attention.

## 2024 AT A GLANCE



**SALES**  
2024

**38,5M €**

2021 – 2024

+2%

## OFFICE WORLDWIDE

**6 PLANTS** (4 in ATELLA - 2 in SAN NICOLA LA STRADA)

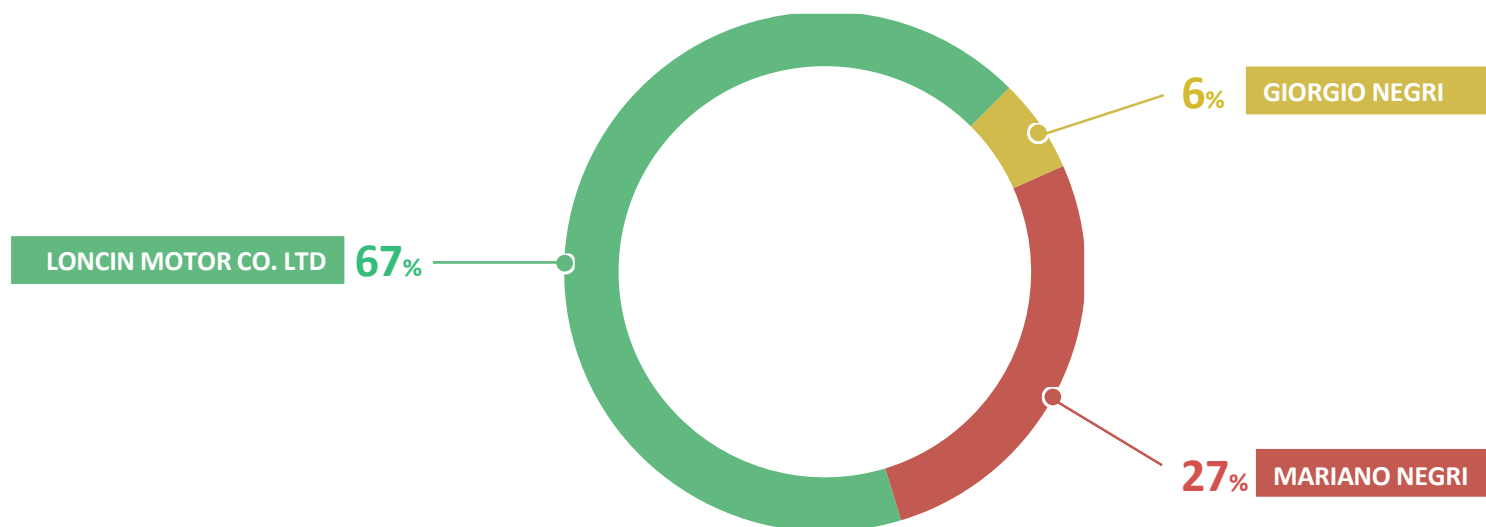
**1 REPRESENTATIVE OFFICE** (MILANO)





## SHAREHOLDERS

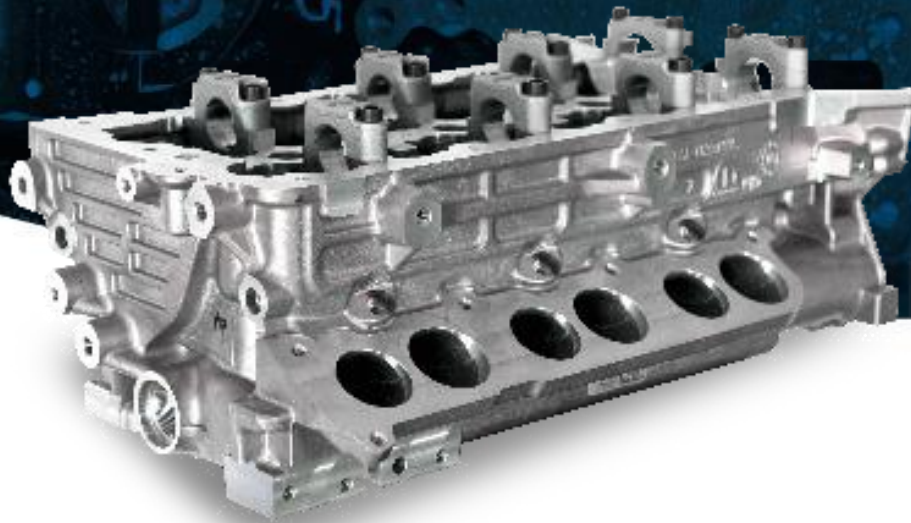
- The Governance of the Company is bound to the NEGRI family, active for over 40 years in the engines field with a strong presence in the reference territory.
- Since January 2017 the Chinese multinational Loncin Motor Co. Ltd has owned 67% of the company's capital following the purchase of shares of Mariano Negri and Giorgio Negri corresponding to a total share of 55 % plus a capital increase that grew up to 67%.
- The Loncin Group is an important reality in the reference sector with important introductions acquired in various market segments, similarly to C.M.D., but with a very significant commercial and economic strength capable of facilitating the future development of C.M.D.







# MACHINING



**Machining of mechanical powertrain components for small, medium and large series for the largest players in the industry**

**Production and processing of a broad portfolio of components  
Customization according to customer request**





**DESIGN**



**PROTOTYPING**



**MECHANICAL COMPONENT  
PRODUCTION**



**ASSEMBLY**

## **Complex Mechanical Processing**

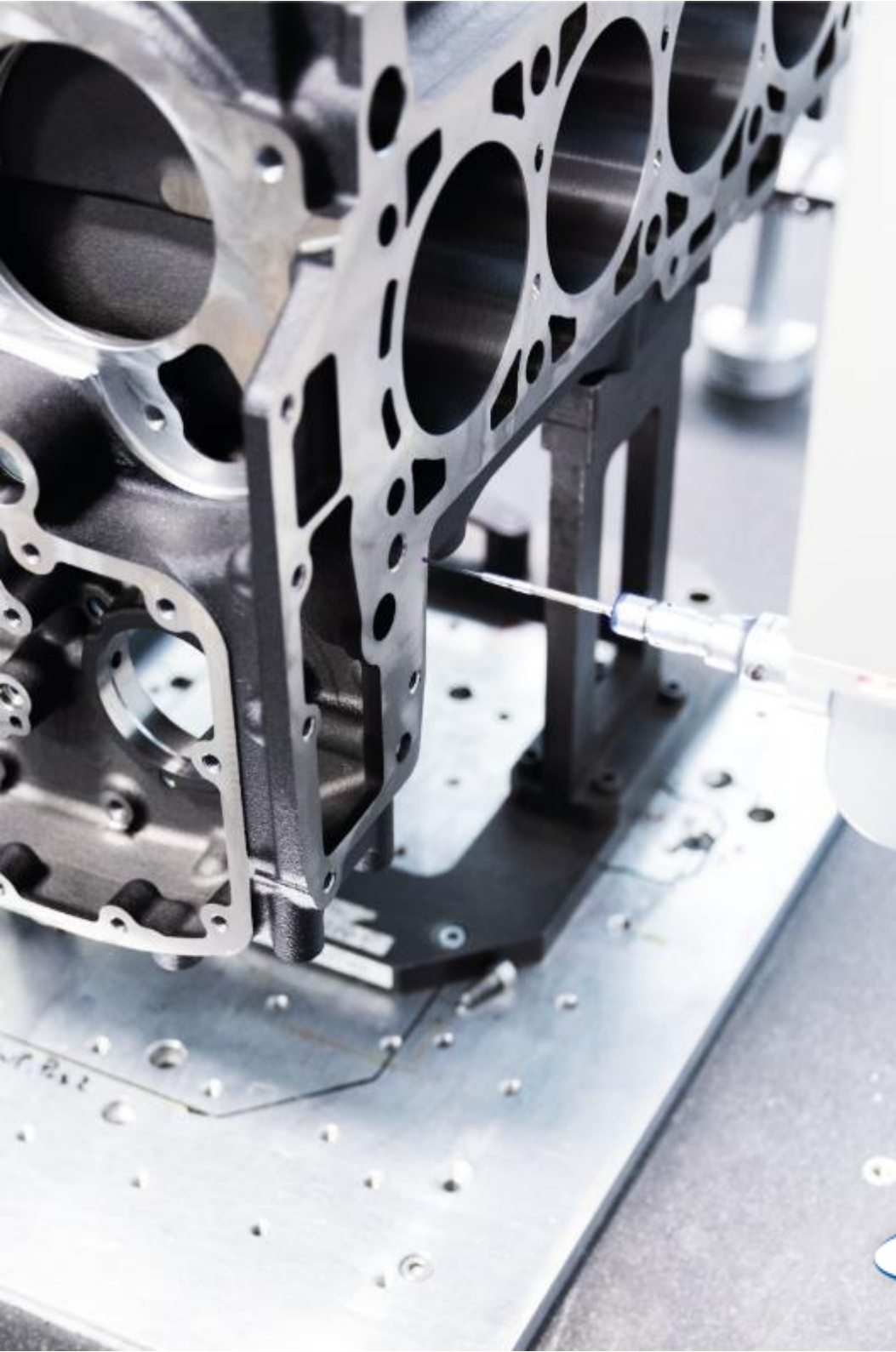
### **OUR CORE BUSINESS**

Specialization in the high-precision machining of mechanical parts, thanks to automated and technologically advanced manufacturing processes, has allowed us to become, over the years, partners of some of the most important companies in the world in the automotive sector.

We are specialized in the machining of a very wide range of complex mechanical components such as: crankcases, heads, exhaust manifolds, flywheels, camshafts and crankshafts, oil sumps, Common Rail injection pumps and many others.







## Every component has a story

Every component has a story.

Using high technologies, components are designed and developed with a planned and monitored production.

CMD has over 70 CNC machines for several sizes and dimensions with a high level quality process in order to meet customer requirements, from small to large series, so to be in compliance with the customer needs depending on the best location, in terms of production costs, logistics, time to market.



## LAVORAZIONI MECCANICHE COMPLESSE

Ci piace associare la nostra capacità di sviluppare prodotti innovativi a una flessibilità che caratterizza tutte le fasi del processo: dalla progettazione al testing, per finire tutto quanto è legato alla produzione di serie: logistica, imballaggi, protezione.



Cylinder head V6 Diesel engine, Allumi-nium, volume 70k units/ year supplied fully machined - washed - tested with all components assembled. Ready to be assembled on the engine.



Cylinder block 4 cylinders 3200 diesel, cast iron, volume 55k units /year supplied fully machined including honing and assembling of components.



Cylinder head 3000 cc Diesel engine, al-luminium, volume 75k units/ year, supplied fully machined - washed -tested with all components assembled. Ready to be assembled on the engine.

Cylinder block 800cc motorcycle engi-ne, alluminium, volume 6k units /year, supplied fully machined including painting, Nikasil Plating and assembly of up-per and lower parts.





## LAVORAZIONI MECCANICHE COMPLESSE

Ci piace associare la nostra capacità di sviluppare prodotti innovativi a una flessibilità che caratterizza tutte le fasi del processo: dalla progettazione al testing, per finire tutto quanto è legato alla produzione di serie: logistica, imballaggi, protezione.



Cylinder block 4 cylinders gasoline, al-luminium, volume 55k units /year, supplied supercubed, washed after leak-tested.

Gear box, alluminium, volume 35k units / year, supplied fully machined washed and tested.



Cylinder block 4 cylinders 3000 diesel, cast iron, volume 25k units /year, supplied fully machined including honing and assembling of components.



## OUR CERTIFICATION

---

The CMD Quality system is applied according to the operational criteria on the IATF 16949 principles.

The protection of health, safety and the environment represents the starting point of all our company's activities: for this reason it has been certified **ISO 9001, AS/EN 9100 e ISO 14001**.



Since 2014, in cooperation with FIAT (now STELLANTIS), the World Class Manufacturing system has been launched in our factories, a customer-focused business system which involves production only with a pull logic: continuous flow and short leads.

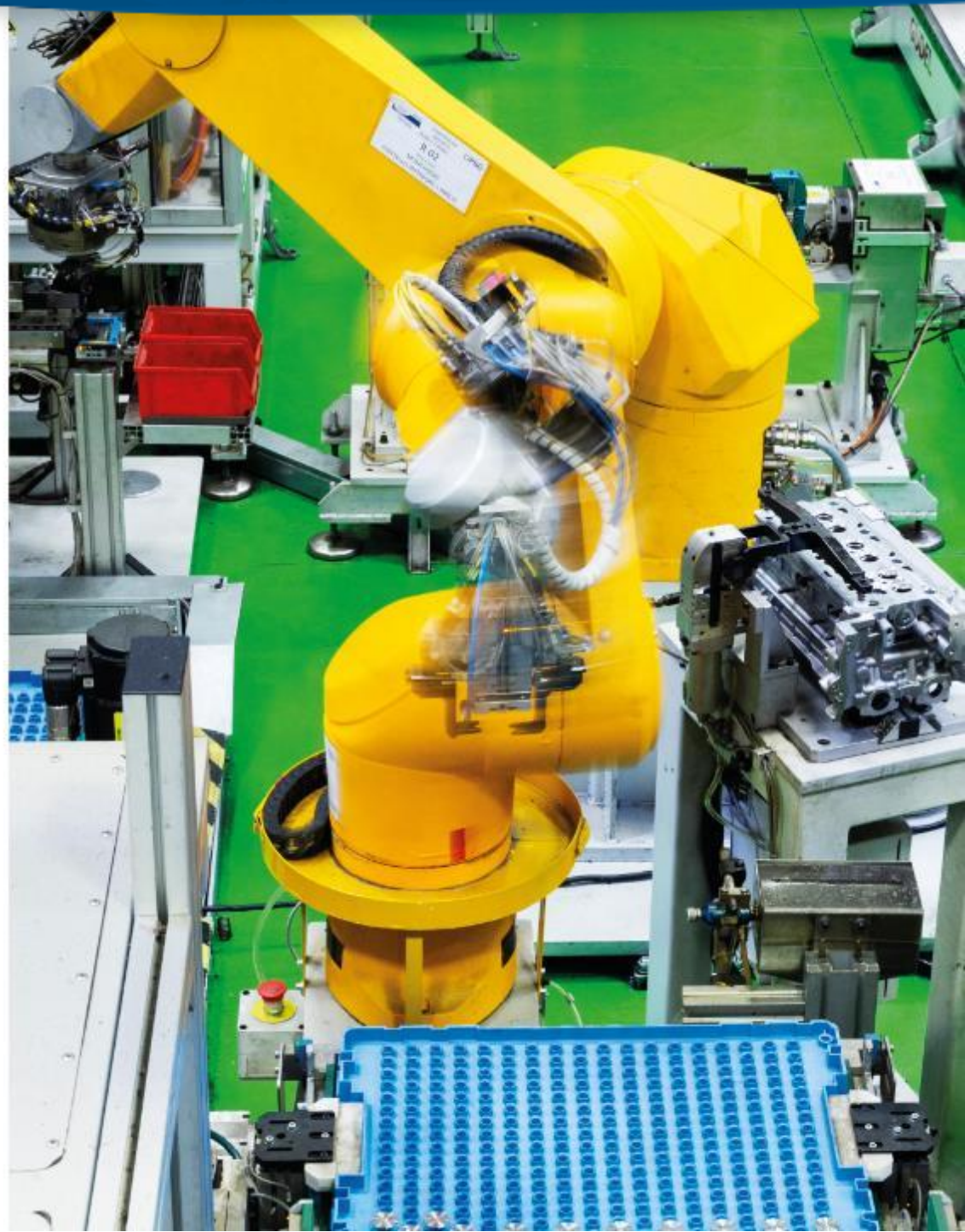


## TECHNOLOGIES

**HELLER**



**OKK**



**Cutting - edge equipment for the production of components inside our Atella plants:**

**Fully Automated Production Line «BRUNO NEGRI»**

can manage the entire components processing in automatic.

- **More of 70 CNC machines**  
(of different dimensions)







## AUTOMATION DIVISION OVERVIEW



PEOPLE

**5**



NUMBER OF PROJECTS (AK - MK)

**108**



TEAM  
FOUNDATION  
**2015**



QUALITY CERTIFICATIONS

EN9100  
ISO TS 16949  
ISO 9001  
ISO 14001:2004

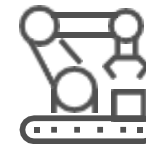
SOLUTIONS



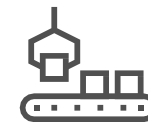
ASSEMBLY



PROCESSES



HANDLING



PALLETIZING

### PRODUCTS

- Assembly Islands
- Leak Testing machine
- Marking machines
- Measuring machine
- Assembly machines

### DEVELOPMENT

- Manufactory solutions
- Engineering solutions
- Enterprise IT
- IT-Enabled services
- HMI-Solutions

### SERVICE

- Design
- Training
- WCM team support
- PRO team support
- PM team support

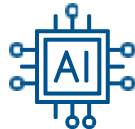
## CAPABILITIES AUTOMATION

CMD with the Automation division of the Machining BU continues to direct its activities development towards digital innovation and in the implementation of technologies linked to the Industry 4.0 and Smart paradigms Manufacturing. All strategic actions for technological growth have found a place within CMD-AUTOMATION, project of a global nature which involved all departments of the Machining BU transversally. The initiative aims to the objective of creating products and services aimed at supporting the Machining BU in technological advancement.

**Among the technologies on which CMD has focused its attention are:**



IoT



Artificial Intelligence



Augmented Reality



Collaborative Robotics



Advanced Automation



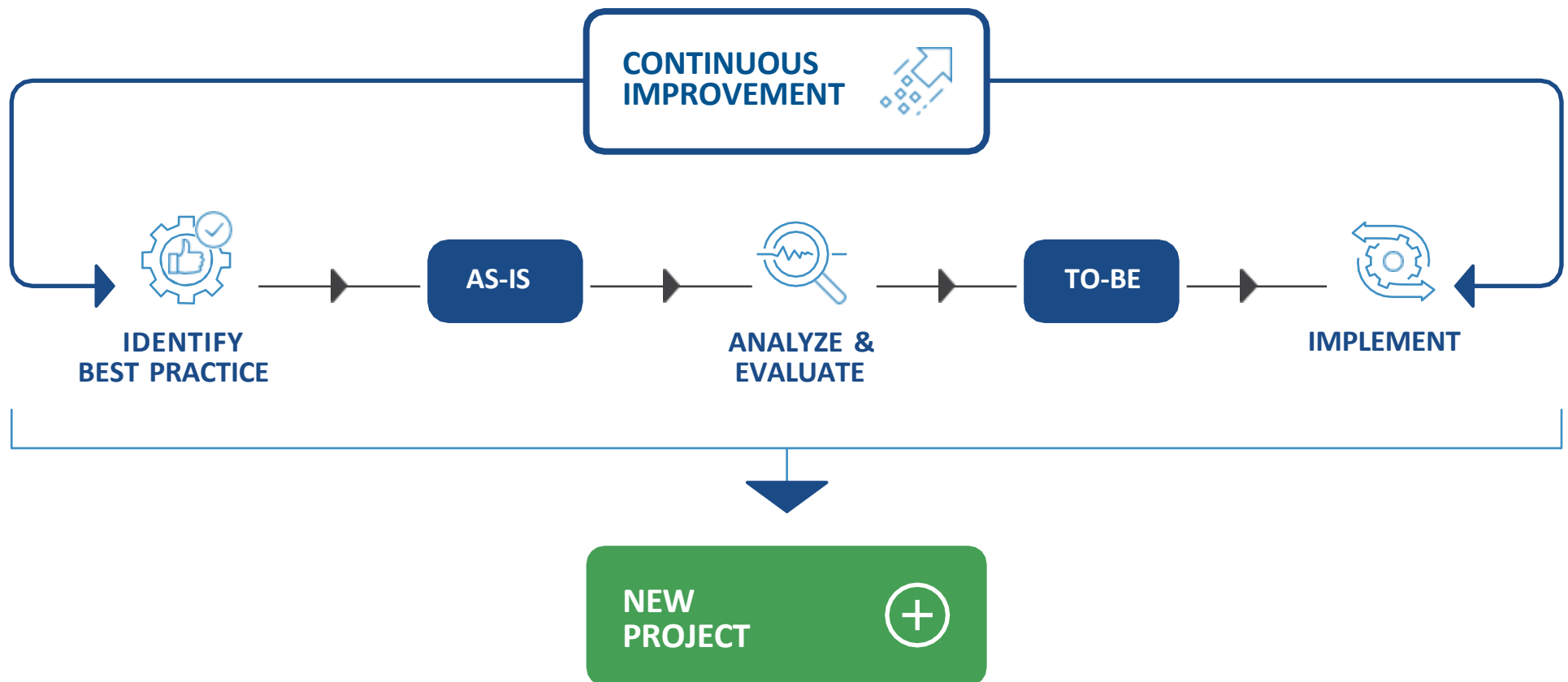
Cybersecurity on  
OT/IT networks



Big Data



# AUTOMATION DIVISION





## AUTOMATION DIVISION

### SOME PROJECT COMPLETED



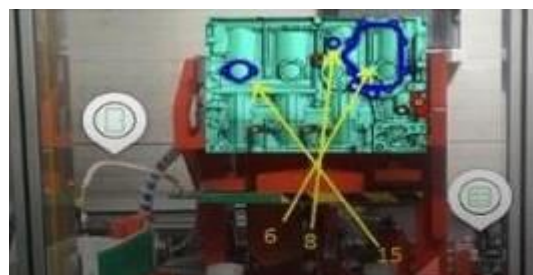
**R10 ROBOTIC AREA**



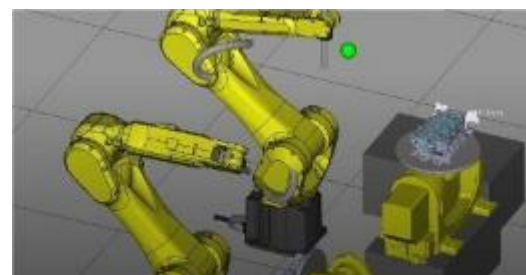
**IoT SENSOR SOFTWARE  
MANAGEMENT**



**FONDIUM MARKER**



**AUGMENTED REALITY**

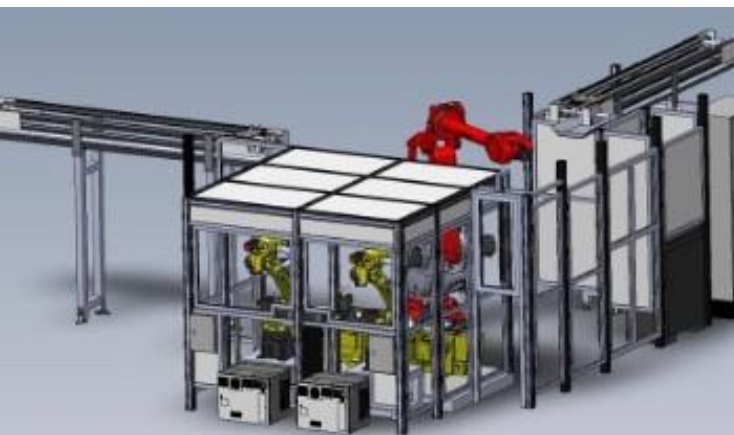


**METAL DEBURRING AREA**





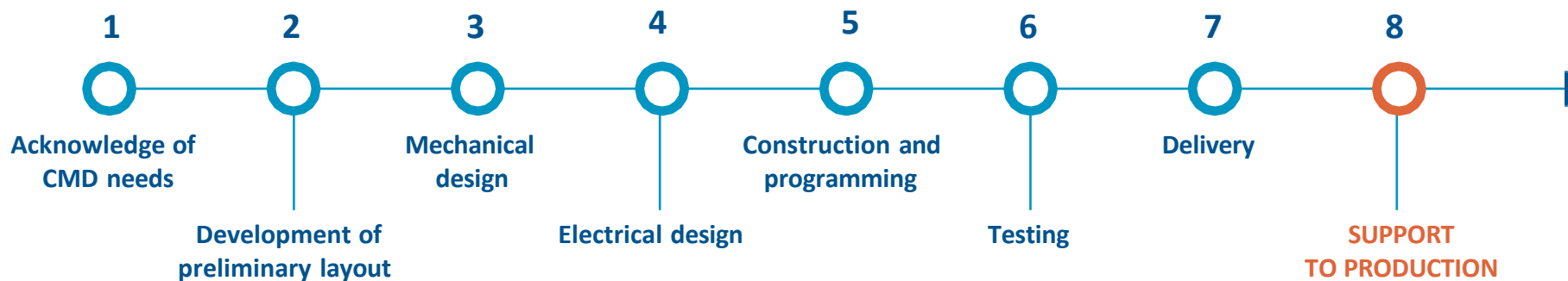
## AUTOMATION DIVISION



Some programming languages used tools



### THE PATH TO A SOLUTION





## PARTNERS



# Thank You

CMD Headquarters  
[info@cmdengine.com](mailto:info@cmdengine.com)



[www.cmdengine.com](http://www.cmdengine.com)

in | f