



FERT[®]

Strength begins with us.

steel spacers
lattice girders
reinforcing steel

Products

2025
2026



Czech producer

Why FERT?

Because we offer a combination of tradition, expertise, and flexibility.

We are a reliable partner you can count on. Since 1992, we have been combining family tradition with modern technology and have grown into the largest manufacturer of reinforcing steel, spacers, and lattice girders in **Central Europe**.

What do we offer?

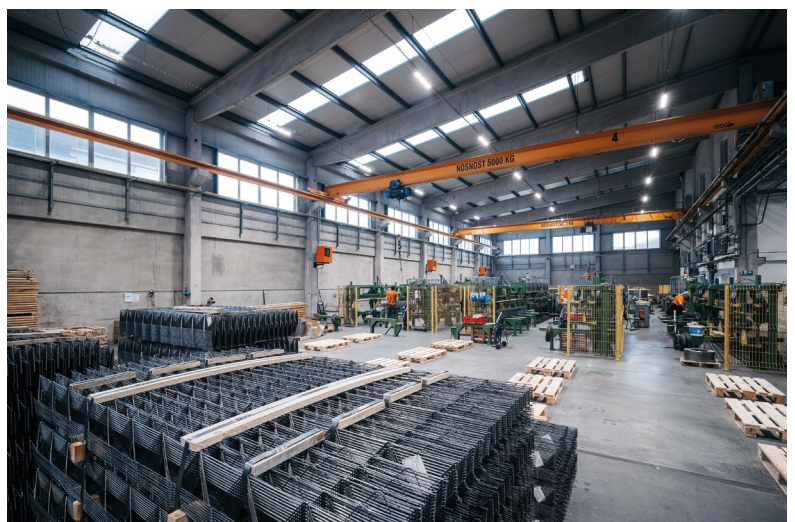
Tradition and stability – more than 30 years of experience and over 80 employees who know their craft.

Quality confirmed by certifications – our in-house testing laboratory and dozens of certificates guarantee the reliability of every product.

Fast availability – we keep most standard types in stock.

Tailor-made solutions – we manufacture according to individual customer requirements.

International presence – our products are exported to numerous markets across Europe.



Our Team

FERT is a **family-owned company** now run by the third generation. Family values and a friendly atmosphere are at the core of our daily operations, shared with more than **80 employees**. Together we form a team you can rely on.



Experience and Future

We are **long-term partners** for major panel manufacturers, brick factories, and construction companies in the **Czech Republic**, Europe, and beyond. Our experience and tradition go hand in hand with modern technologies and a **responsible approach to the future**.

Sustainability is taken seriously at FERT. **Most of our energy comes from natural sources** – the roofs of our production halls are covered with **photovoltaic panels**, we operate two small **hydroelectric power plants**, and we use **waste heat** for heating production and administrative facilities.

We also invest in development and innovation. **We cooperate** with leading experts and universities, such as the **Brno University of Technology**, to continue providing solutions that meet the needs of both present and future construction industries.





The quality of our products exceeds borders.
Thanks to our stable background and reliability,
we have earned customers in 25 countries
worldwide.

Our customers



Certificates



Prüf-, Inspektions- und
Zertifizierungsstelle

References

Market position

Our reinforcing steel, reinforcement cages, and spacer products are part of exceptional construction projects across Europe – from Sweden and Norway to Poland, Germany, England, Slovakia, and many other countries.



Dancing House, Prague | CR



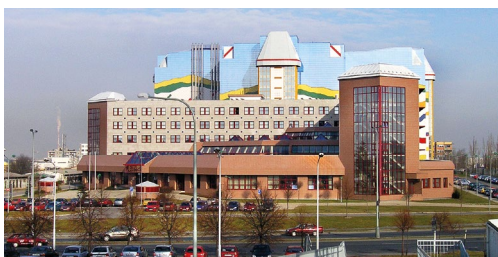
Vilbra Business Centre, Vilnius | LT



The Olympic Velodrome, London | UK

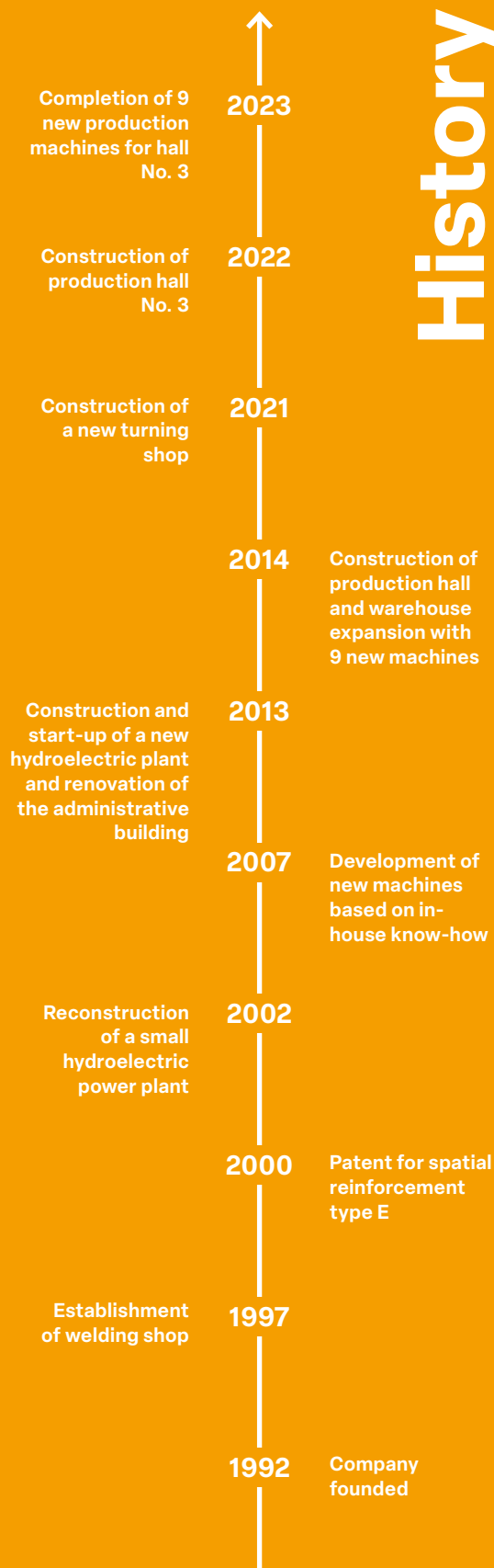


Lockarp Logistics Centre, Malmö | SE



National Archives, Prague | CR

History



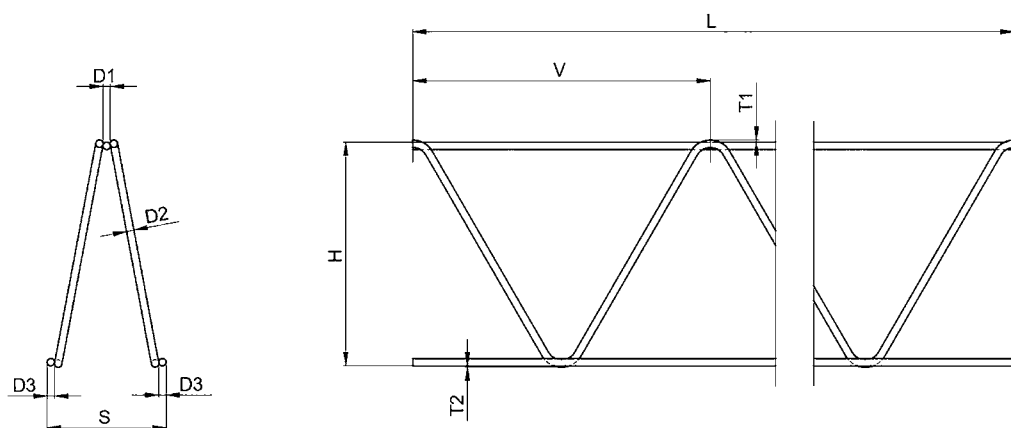
Since 1992, we have been growing, innovating, and expanding our operations. Every milestone is part of a story that connects tradition with modern technologies and international experience.

Spacers

Spacers Type D light

Triangular spatial elements

Used to maintain the distance between layers of mesh and reinforcement in slabs, ceilings, and foundation structures.



D1	4–5 mm
D2	2.8–5 mm
D3	2.8–5 mm
V	200 mm
H	50–300 mm
L	2 m
T1	3–5 mm
T2	3–5 mm
S	70–110 mm

diameter of supported wires	spacing during installation	usage / m ²
$d \leq 6.5 \text{ mm}$	500 mm	2.0 m/m ²
$6.5 \text{ mm} < d \leq 12 \text{ mm}$	700 mm	2.0 m/m ²
$d > 12 \text{ mm}$	700 mm	2.0 m/m ²

Advantages

- High stability and durability
- Easy handling



The above values are only recommendations; their use depends on the specific construction documentation.

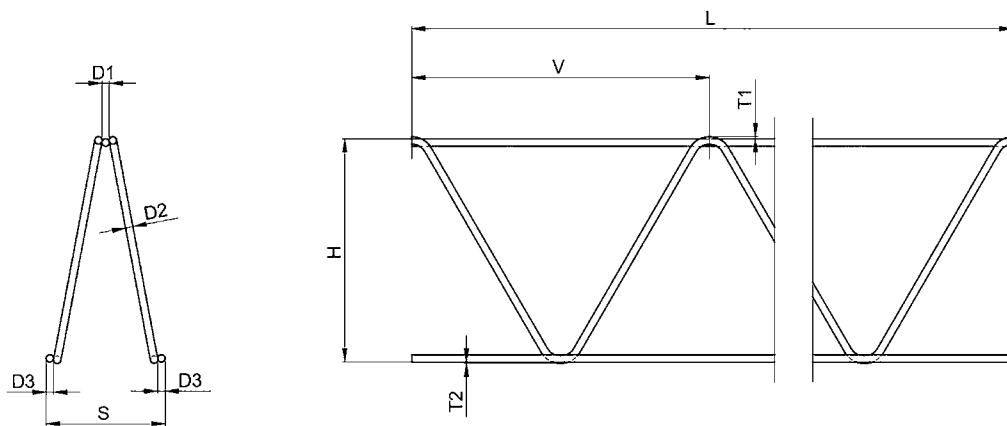
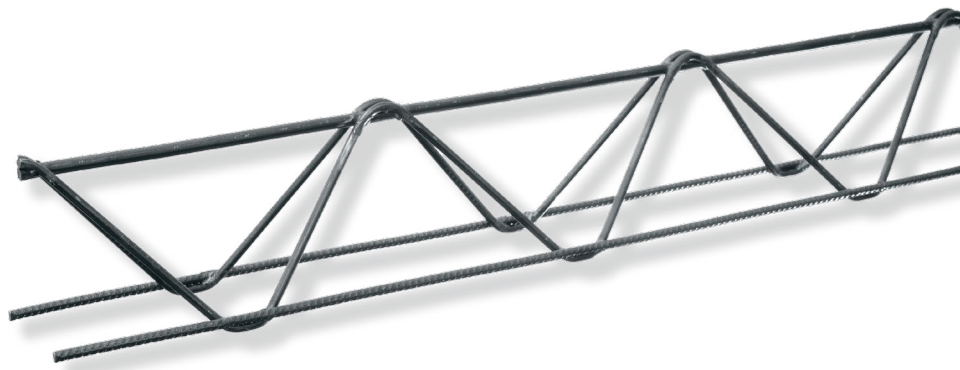
The products are manufactured in accordance with the FK 010 standard and tested in our certified laboratory in accordance with DBV Merkblatt documentation.

(H) height (mm)	large package palette/bundle (pcs) on europalette	(S) width (mm)	small package palette/bundle (pcs) on europalette	(S) width (mm)	(L) length (m)	(H) height (mm)	large package palette/bundle (pcs) on europalette	(S) width (mm)	small package palette/bundle (pcs) on europalette	(S) width (mm)	(L) length (m)
50	2400/200-25-E	45	1250/50-E	45	2	165	1600/200-25-E	80			2
60	2500/250-25-E	60	1400/50-E	60	2	170			800/50-E	60	2
70			1400/50-E	60	2	180	1200/200-25-E	80	600/50-E	60	2
75	2500/250-25-E	60			2	190			600/50-E	60	2
80			1200/50-E	60	2	200	1200/200-25-E	80	600/50-E	60	2
90	2500/250-25-E	60	1200/50-E	60	2	210	1200/200-25-E	80	450/50-E	80	2
100	2000/200-25-E	80	1200/50-E	60	2	220	800/200-25-E	80	450/50-E	80	2
105	2000/200-25-E				2	230	800/200-25-E	80	450/50-E	80	2
110			800/50-E	60	2	240			300/50-E	80	2
120	2000/200-25-E	80	800/50-E	60	2	250	800/200-25-E	80	300/50-E	80	2
130			800/50-E	60	2	260			300/50-E	80	2
135	2000/200-25-E	80			2	270	700/200-25-E	80	300/50-E	80	2
140	2000/200-25-E	80	800/50-E	60	2	280	700/200-25-E	80	300/50-E	80	2
150	1600/200-25-E	80	800/50-E	60	2	290			300/50-E	80	2
160			800/50-E	60	2	300	700/200-25-E	80	300/50-E	80	2

Spacers Type D heavy

Triangular spatial elements

Used to maintain the distance between layers of mesh and reinforcement in slabs, ceilings, and foundation structures.



D1	6–8 mm
D2	4.6–5 mm
D3	5 mm
V	200 mm
H	80–240 mm
L	2 m
T1	3–5 mm
T2	3–5 mm
S	80 mm

diameter of supported wires	spacing during installation	usage / m ²
$d \leq 6.5$ mm	500 mm	2.0 m/m ²
$6.5 \text{ mm} < d \leq 12$ mm	700 mm	2.0 m/m ²
$d > 12$ mm	700 mm	2.0 m/m ²

Advantages

- High stability and durability
- Easy handling



The above values are only recommendations; their use depends on the specific construction documentation.
The products are manufactured in accordance with the FK 010 standard and tested in our certified laboratory in accordance with DBV Merkblatt documentation.

(H) height (mm)	package palette/bundle (pcs) on europalette	(S) width (mm)	(L) length (m)
90	450/50-E	80	2
100	300/50-E	80	2
105			
110	300/50-E	80	2
120	300/50-E	80	2
130	300/50-E	80	2
135			

(H) height (mm)	package palette/bundle (pcs) on europalette	(S) width (mm)	(L) length (m)
140	300/50-E	80	2
150	300/50-E	80	2
160	300/50-E	80	2
165			
170	300/50-E	80	2
180	300/50-E	80	2
190	300/50-E	80	2

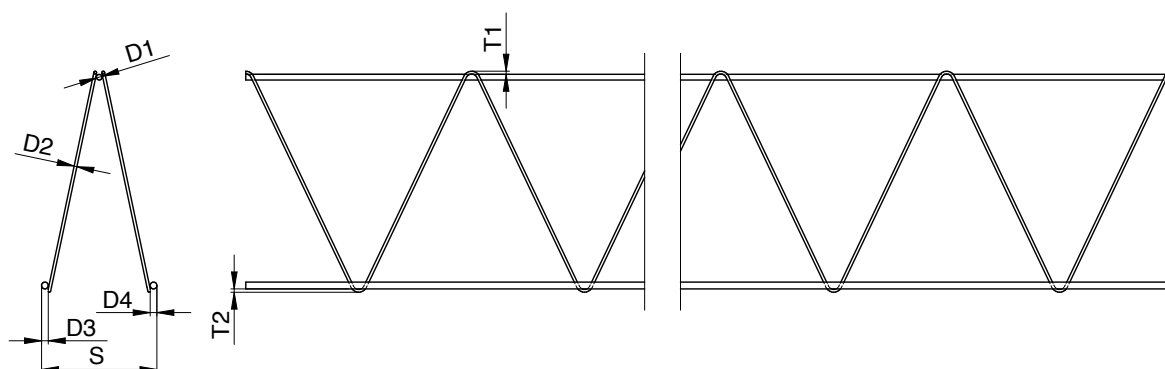
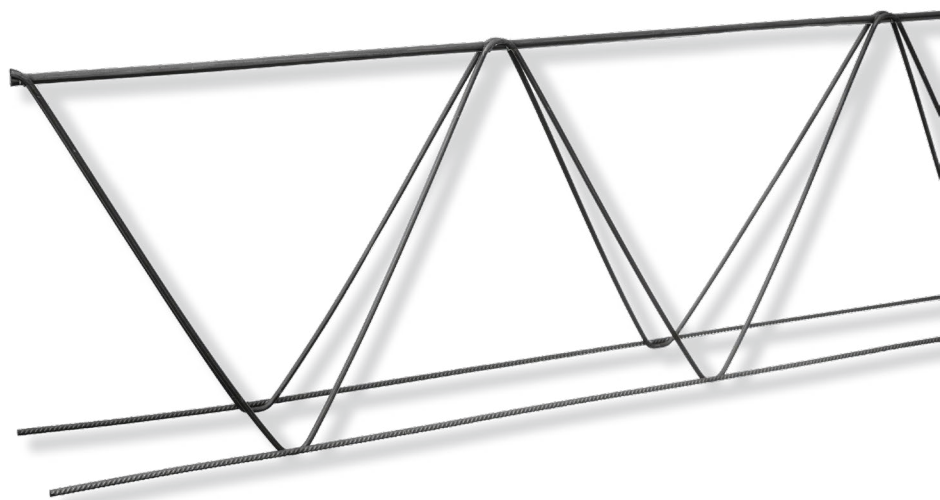
(H) height (mm)	package palette/bundle (pcs) on europalette	(S) width (mm)	(L) length (m)
200	300/50-E	80	2
210	300/50-E	80	2
220	300/50-E	80	2
230	300/50-E	80	2
240	300/50-E	80	2

Spacers

Spacers Type DB

new

A new addition to the product range spacers for demanding structures. Primarily used in the construction of bridges, heavy foundations, and large reinforced concrete buildings, where high load capacity and reinforcement stability are required.



D1	5–10 mm
D2	5–7 mm
D3	5–12 mm
D4	5–12 mm
V	400 mm
H	250–500 mm
L	2–6 m
T1	3–5 mm
T2	3–5 mm
S	120–140 mm

diameter of supported wires	spacing during installation	usage / m ²
$d \leq 6.5 \text{ mm}$	500 mm	2.0 m/m ²
$6.5 \text{ mm} < d \leq 12 \text{ mm}$	700 mm	2.0 m/m ²
$d > 12 \text{ mm}$	700 mm	2.0 m/m ²

The above values are only recommendations; their use depends on the specific construction documentation.
The products are manufactured in accordance with the FK 016 standard and tested in our certified laboratory in accordance with DBV Merkblatt documentation.

Advantages

- Maximum load capacity – reinforced base plates
- Stability for heavy structures
- Easy installation



(H) height (mm)	package palette/bundle (pcs) on europalette	(S) width (mm)	(L) length (m)
250	200/50-E	105	2
260	200/50-E	105	2
270	200/50-E	105	2
280	200/50-E	105	2
290	200/50-E	105	2
300	200/50-E	105	2
310	200/50-E	105	2
320	200/50-E	105	2
330	200/50-E	105	2

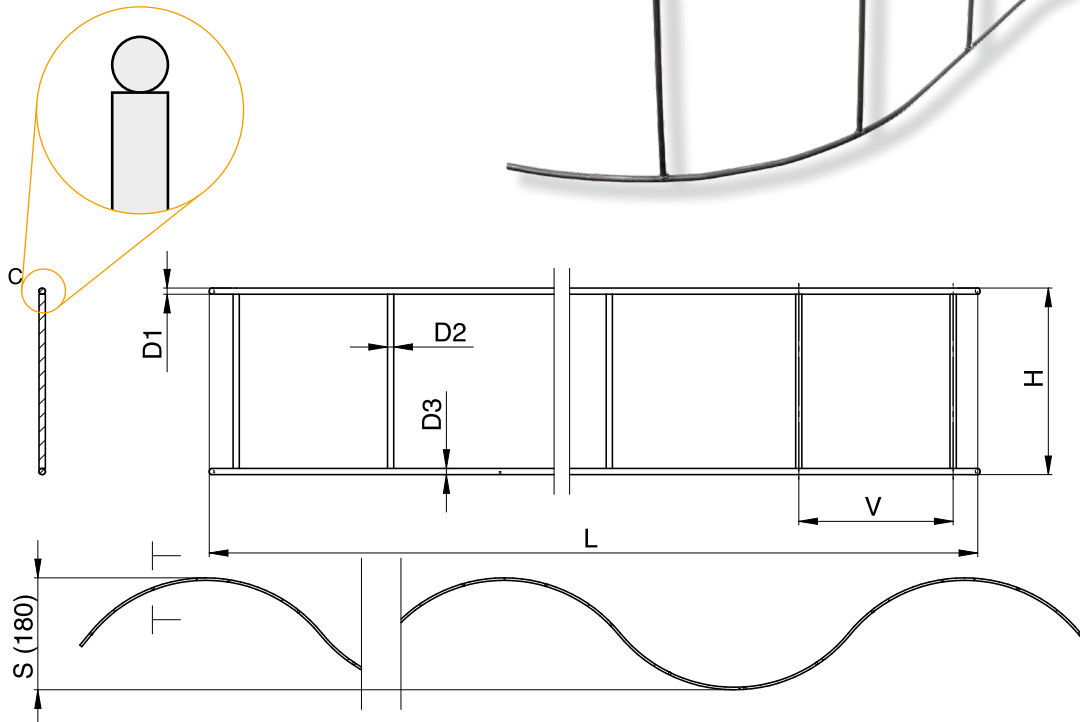
(H) height (mm)	package palette/bundle (pcs) on europalette	(S) width (mm)	(L) length (m)
340	200/50-E	105	2
350	200/50-E	105	2
360	200/50-E	105	2
370	200/50-E	105	2
380	200/50-E	105	2
390	200/50-E	105	2
400	200/50-E	105	2
410	200/50-E	105	2
420	200/50-E	105	2

(H) height (mm)	package palette/bundle (pcs) on europalette	(S) width (mm)	(L) length (m)
430	200/50-E	105	2
440	200/50-E	105	2
450	200/50-E	105	2
460	200/50-E	105	2
470	200/50-E	105	2
480	200/50-E	105	2
490	200/50-E	105	2
500	200/50-E	105	2

Spacers Type S standard

Steel S-shaped elements

also known as “UTH” – used to maintain the distance between layers of mesh or reinforcement during concrete pouring.



D1	3.5–4.2 mm
D2	3.5–4.2 mm
D3	3.5–4.2 mm
H	30–240 mm
L	2 m
S	180 mm

diameter of supported wires	spacing during installation	usage / m ²
d ≤ 6.5 mm	500 mm	2.0 m/m ²
6.5 mm < d ≤ 12 mm	700 mm	2.0 m/m ²
d > 12 mm	700 mm	2.0 m/m ²

The above values are only recommendations; their use depends on the specific construction documentation.

The products are manufactured in accordance with the FK 011 standard and tested in our certified laboratory in accordance with DBV Merkblatt documentation.

Advantages

- Cost-effective solution
- Proven design across Central Europe
- Safe use – blunt weld



(H) height (mm)	package palette/bundle (pcs) on europalette	(S) width (mm)	(L) length (m)
30	✓	2400/25	2
40	✓	1800/25	2
50	✓	1600/25	2
60	✓	1400/25	2
70	✓	1200/25	2
80	✓	1000/25	2
90	✓	1000/25	2
100	✓	800/25	2

(H) height (mm)	package palette/bundle (pcs) on europalette	(S) width (mm)	(L) length (m)
110	✓	800/25	2
120	✓	600/25	2
130	✓	600/25	2
140	✓	600/25	2
150	✓	600/25	2
160	✓	600/25	2
170	✓	350/25	2
180	✓	350/25	2

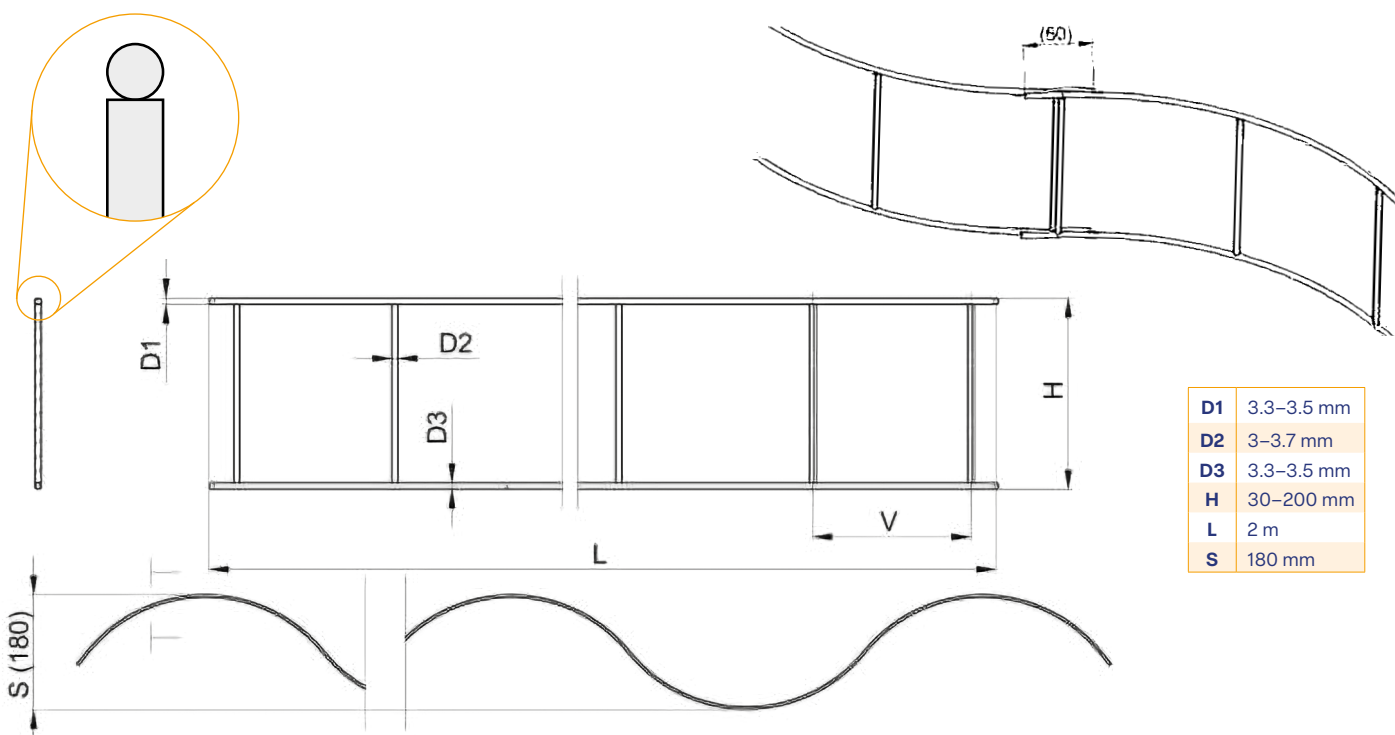
(H) height (mm)	package palette/bundle (pcs) on europalette	(S) width (mm)	(L) length (m)
190	✓	350/25	2
200	✓	350/25	2
210	✓	350/25	2
220	✓	350/25	2
230	✓	350/25	2
240	✓	350/25	2

Spacers

Distance Type S eco

Steel S-shaped elements

also known as “UTH” – used to maintain the distance between layers of mesh or reinforcement during concrete pouring.



diameter of supported wires	spacing during installation	usage / m ²
$d \leq 6.5 \text{ mm}$	500 mm	2.0 m/m ²
$6.5 \text{ mm} < d \leq 12 \text{ mm}$	700 mm	2.0 m/m ²
$d > 12 \text{ mm}$	700 mm	2.0 m/m ²

Advantages

- Economical version
- Commonly in stock

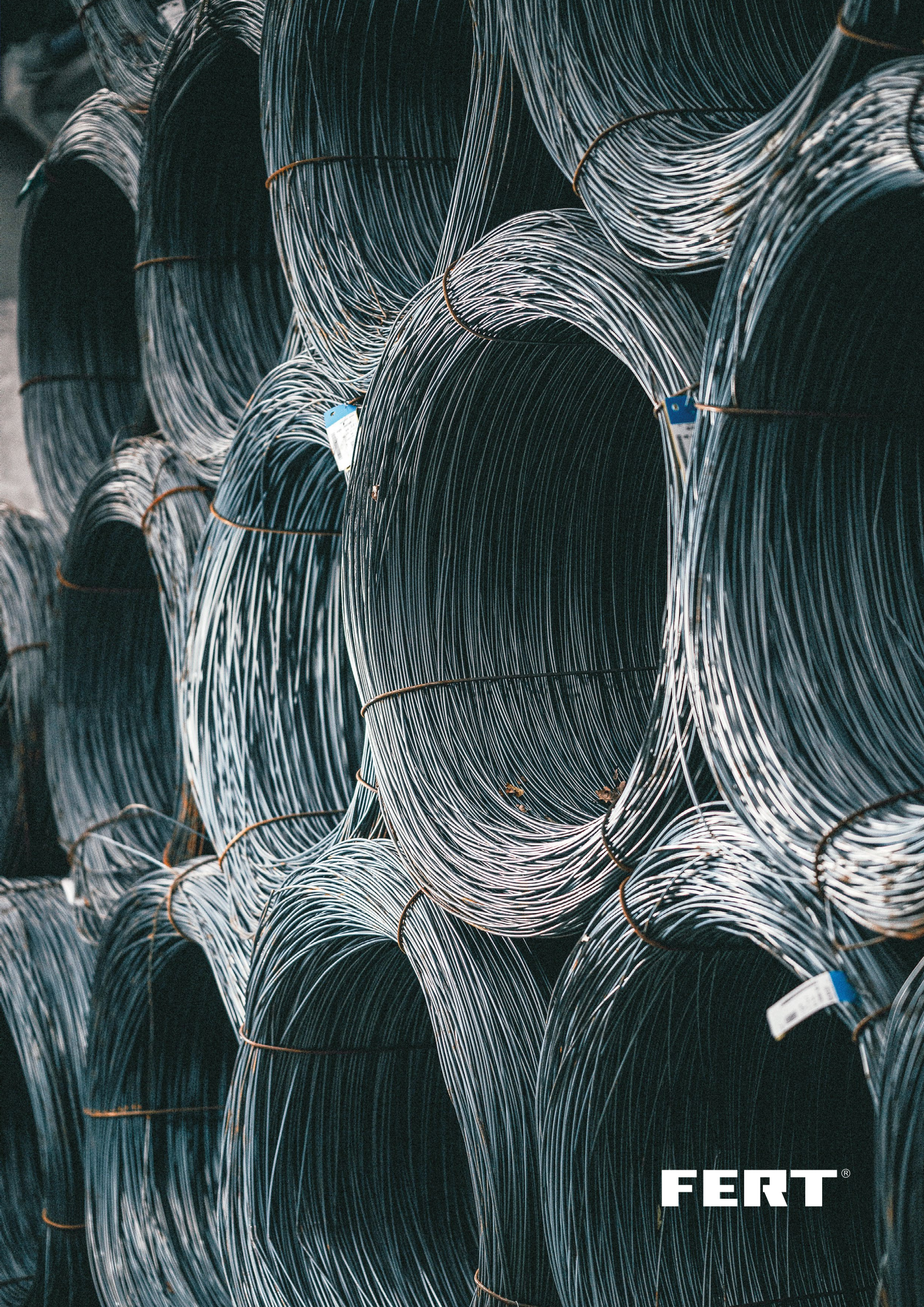


The above values are only recommendations; their use depends on the specific construction documentation.
The products are manufactured in accordance with the FK 011 standard and tested in our certified laboratory in accordance with DBV Merkblatt documentation.

(H) height (mm)	package palette/bundle (pcs) on europalette	(S) width (mm)	(L) length (m)
30	✓	2400/25	2
40	✓	1800/25	2
50	✓	1600/25	2
60	✓	1400/25	2
70	✓	1200/25	2
80	✓	1000/25	2

(H) height (mm)	package palette/bundle (pcs) on europalette	(S) width (mm)	(L) length (m)
90	✓	1000/25	2
100	✓	800/25	2
110	✓	800/25	2
120	✓	600/25	2
130	✓	600/25	2
140	✓	600/25	2

(H) height (mm)	package palette/bundle (pcs) on europalette	(S) width (mm)	(L) length (m)
150	✓	600/25	2
160	✓	600/25	2
170	✓	350/25	2
180	✓	350/25	2
190	✓	350/25	2
200	✓	350/25	2

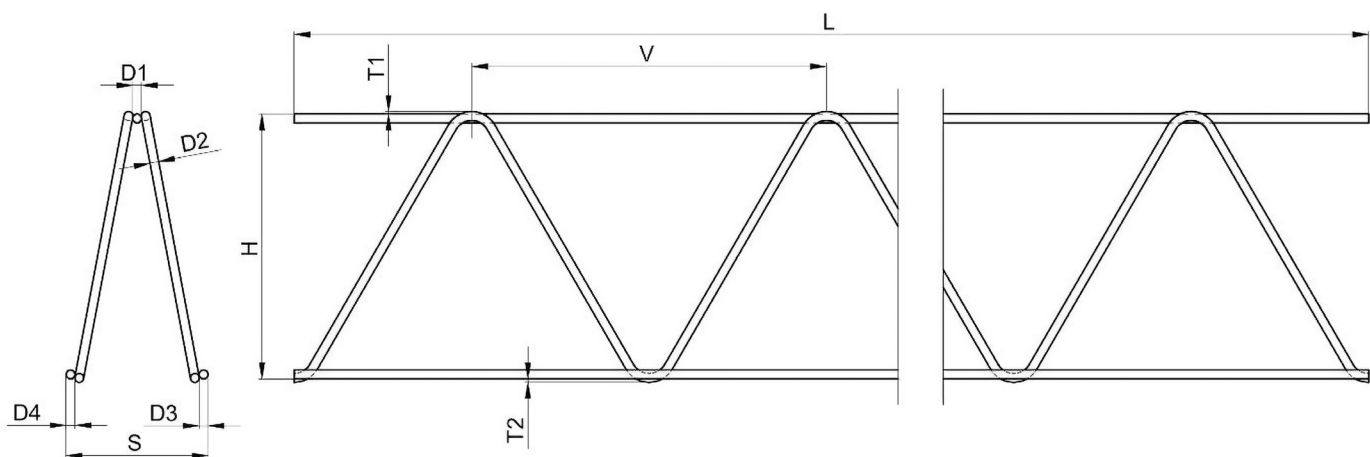


FERT®

Reinforcements

Lattice Girder Type E

A comprehensive solution for efficient and reliable reinforcement of reinforced concrete structures in construction. Prefabricated lattice reinforcement for ceilings, beams, and composite slabs.



D1	5–14 mm
D2	4.6–7 mm
D3	5–14 mm
D4	5–14 mm
V	200 mm
H	70–400 mm
L	1–14 m
T2	3–5 mm
S	70–110 mm

D1	≤ 8 mm	> 8 mm
T2	2–3 mm	0 mm

From a reinforcement length of 1.75 m, the diagonal can be terminated on the bottom flange..

Advantages

- Efficient installation
- Certified product
- Dimensions according to customer specification



The products are manufactured in accordance with FK 005 and tested in our certified laboratory.

CZ - ČSN 42 0139 - TZÚS			
L [m]	H [mm]	S [mm]	V [mm]
≤ 5 (±10 mm)	± 5	± 5	± 15
> 5 (±15 mm)	± 5	± 5	± 15

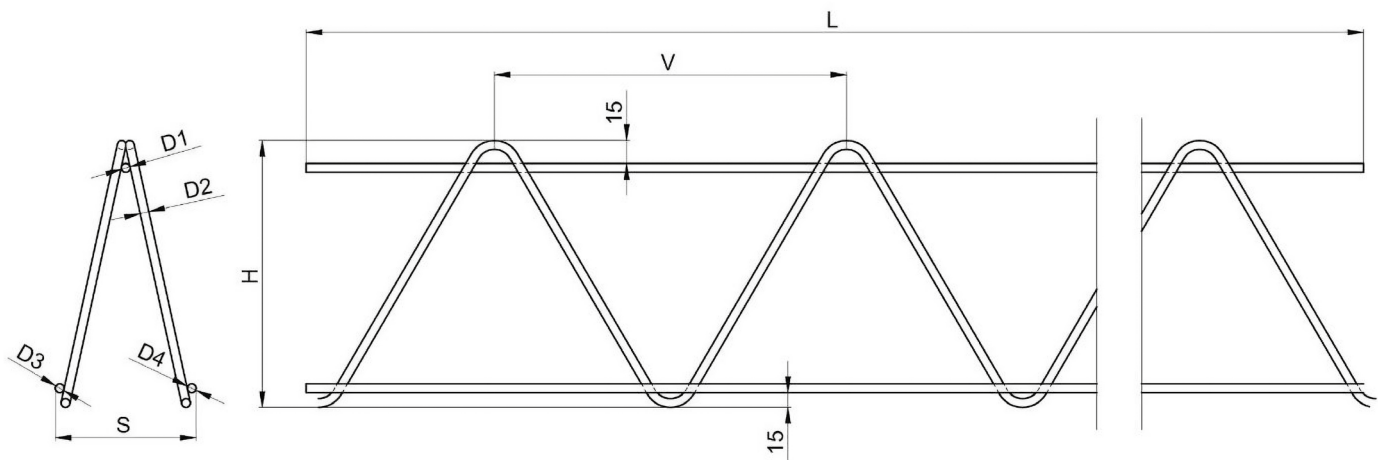
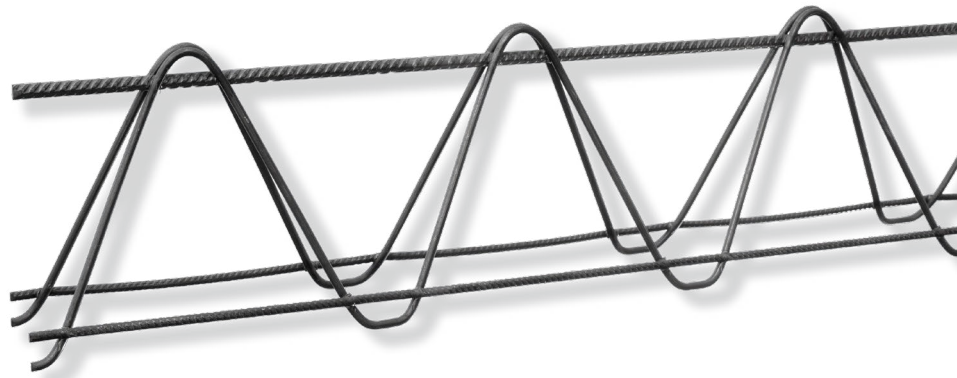
AT - ÖNORM B4707 - TÜV AUSTRIA			
L [m]	H [mm]	S [mm]	V [mm]
< 12 (±20 mm)	+1 bzw. -3	± 7.5	± 2.5
≥ 12 (±40 mm)	+1 bzw. -3	± 7.5	± 2.5

DE - DIN 488 - REHM - ZULASSUNG NR.Z-15.1-335			
L [m]	H [mm]	S [mm]	V [mm]
≤ 5 (-40 mm/+10mm)	+1 bzw. -3	± 7.5	± 2.5
> 5 (-0.8%/+10 mm)	+1 bzw. -3	± 7.5	± 2.5

DE - DIN 488 - REHM - ZULASSUNG NR.Z-15. 2-385			
L [m]	H [mm]	S [mm]	V [mm]
≤ 5 (-40 mm/+10mm)	+1 bzw. -3	± 7.5	± 2.5
> 5 (-0.8%/+10 mm)	+1 bzw. -3	± 7.5	± 2.5

Lattice Girders Type E with Overlap

A comprehensive solution for efficient and reliable reinforcement of reinforced concrete structures in construction. Prefabricated lattice reinforcement for ceilings, beams, and composite slabs.



D1	5-14 mm
D2	4.6-7 mm
D3	5-14 mm
D4	5-14 mm
V	200 mm
H	70-400 mm
L	1-14 m
S	70-110 mm

From a reinforcement length of 1.75 m, the diagonal can be terminated on the bottom flange.

Advantages

- Ideal for use in double (composite) walls
- Certified product
- High strength



The products are manufactured in accordance with FK 005 and tested in our certified laboratory.

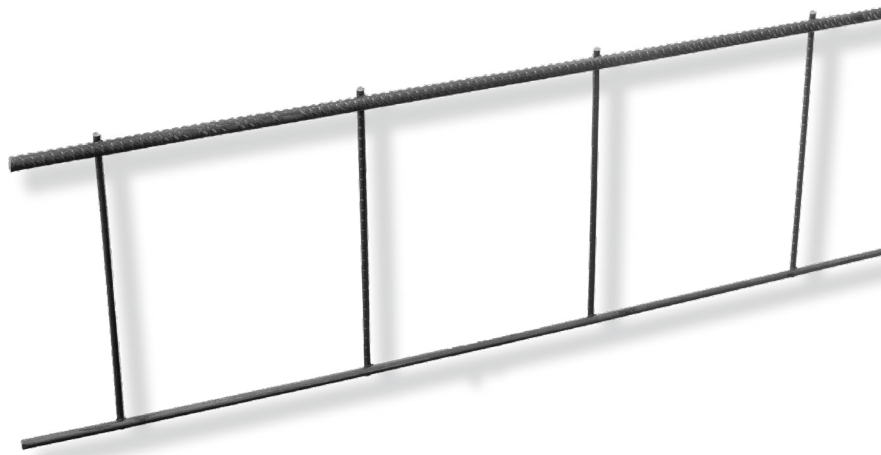
CZ - ČSN 42 0139 - TZÚS			
L [m]	H [mm]	S [mm]	V [mm]
≤ 5 (±10 mm)	± 5	± 5	± 15
> 5 (±15 mm)	± 5	± 5	± 15

AT - ÖNORM B4707 - TÜV AUSTRIA			
L [m]	H [mm]	S [mm]	V [mm]
< 12 (±20 mm)	+1 bzw. -3	± 7.5	± 2.5
≥ 12 (±40 mm)	+1 bzw. -3	± 7.5	± 2.5

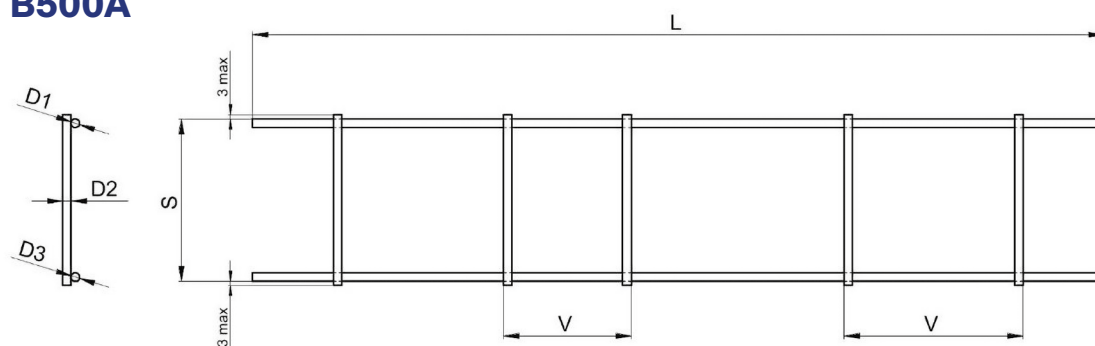
Reinforcements

Single-Sided Reinforcement Type P

Single-sided Type P reinforcement is used for lintels above window and door openings. Produced with two main support wires.

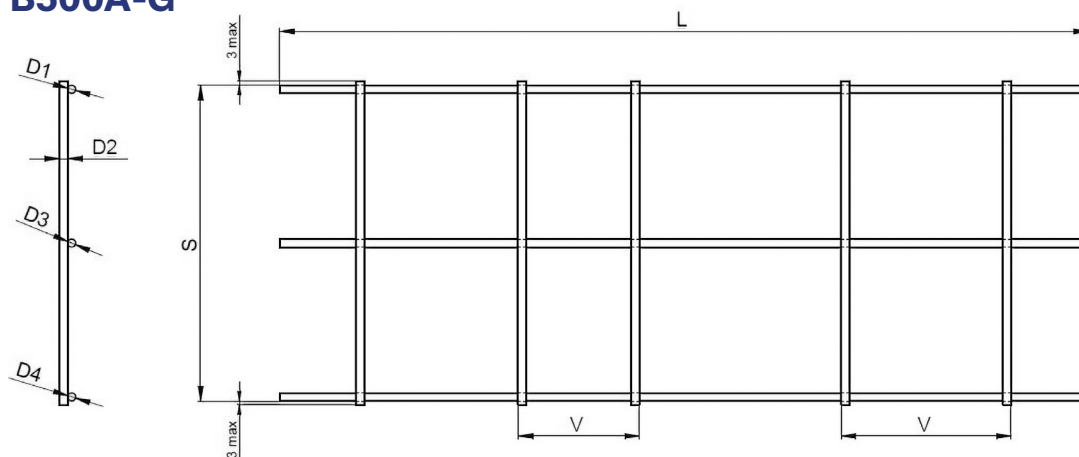


B500A



D1	5-16 mm
D2	4-6 mm
D3	5-16 mm
V	50-400 mm
S	110-400 mm
L	0.98-7.5 m

B500A-G



D1	5-16 mm
D2	4-6 mm
D3	5-16 mm
D4	5-16 mm
V	50-400 mm
S	110-400 mm
L	0.98-7.5 m

There can be 2-4 longitudinal flanges, and their center distance must not be less than 10 cm.

Advantages

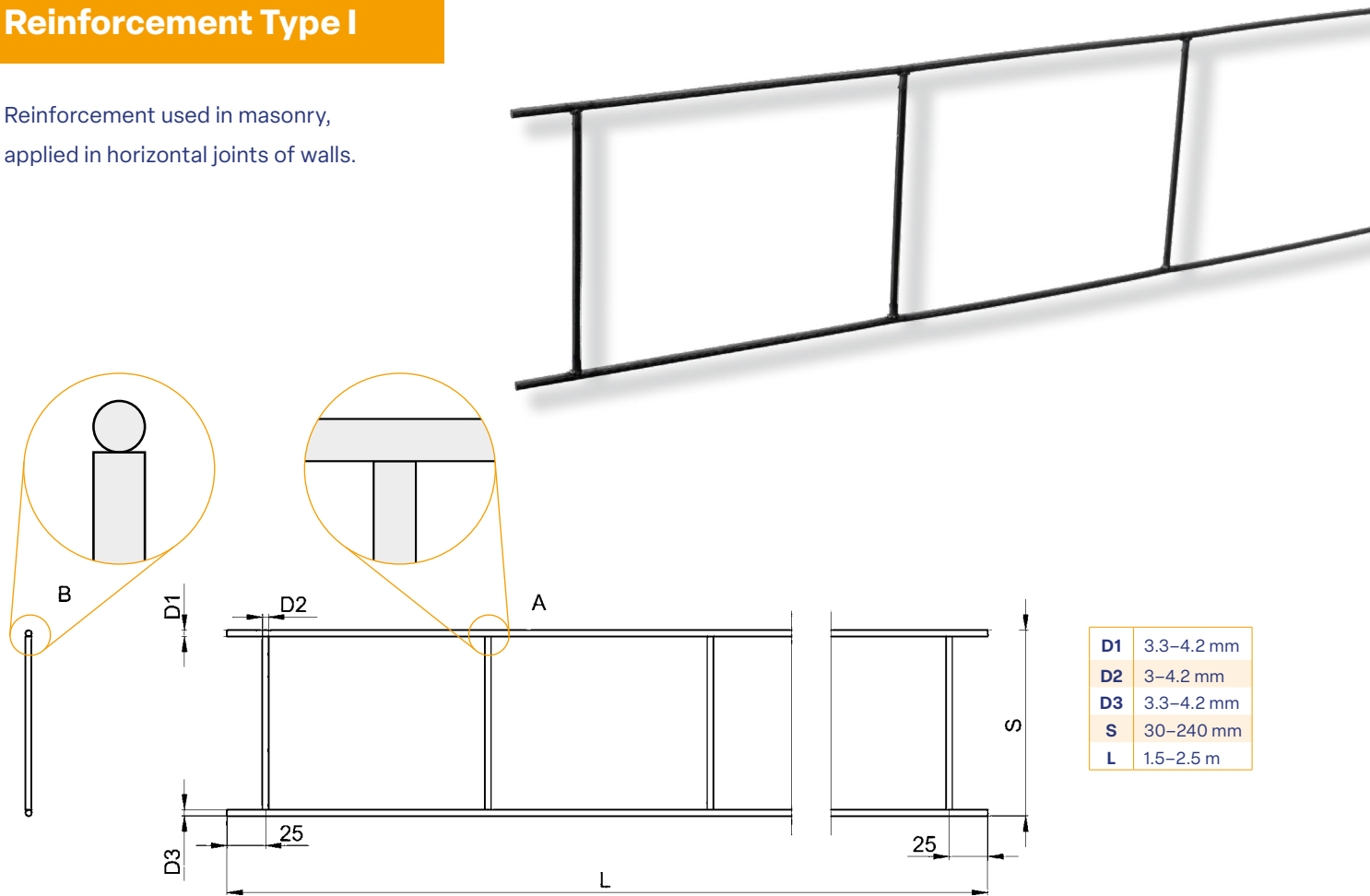
- Perfect strengthening of lintels
- Easy installation
- Saves time and labor



The products are manufactured in accordance with FK 009 and tested in our certified laboratory.

Single-Sided Reinforcement Type I

Reinforcement used in masonry, applied in horizontal joints of walls.



Advantages

- Simple installation
- Increased wall strength
- Crack prevention



The products are manufactured in accordance with FK 014 and tested in our certified laboratory.

(H) height (mm)	package palette/bundle (pcs) on europalette	(L) length (m)
30	3600/50	1,5 – 2,5
40	2700/50	1,5 – 2,5
50	2400/50	1,5 – 2,5
60	2100/50	1,5 – 2,5
70	1800/50	1,5 – 2,5
80	1500/50	1,5 – 2,5
90	1500/50	1,5 – 2,5
100	1200/50	1,5 – 2,5

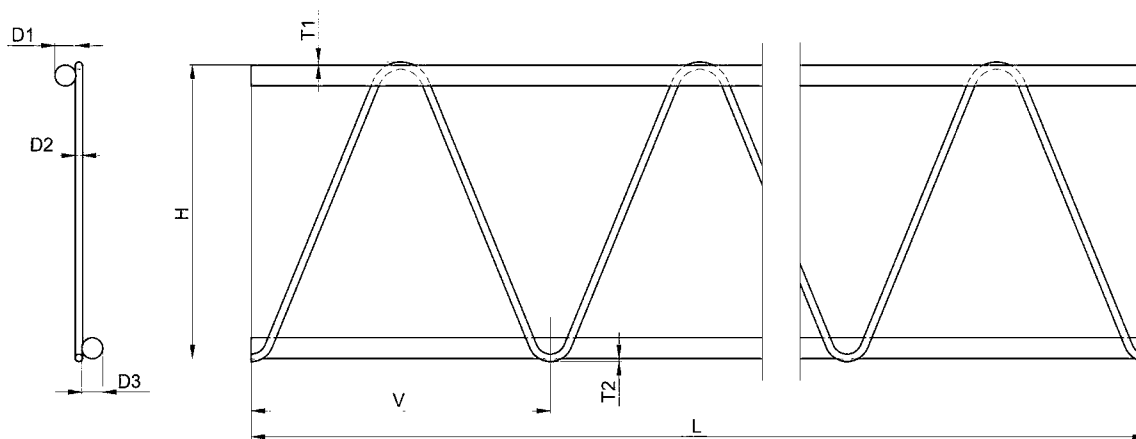
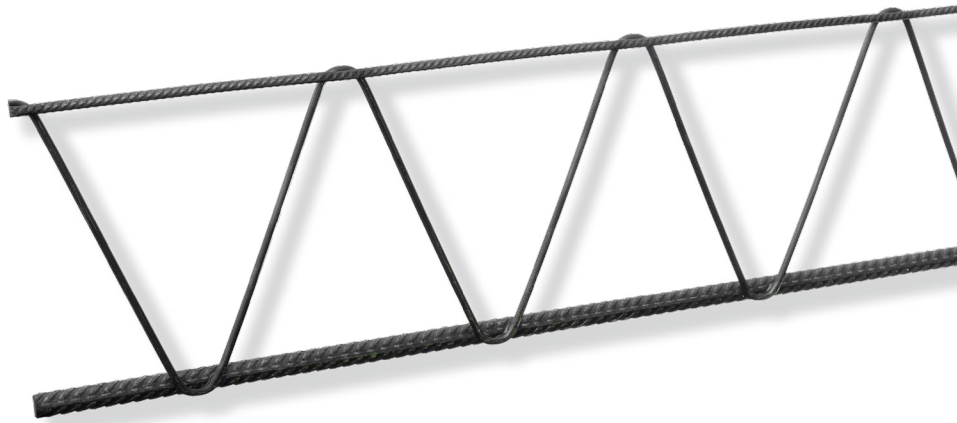
(H) height (mm)	package palette/bundle (pcs) on europalette	(L) length (m)
110	1200/50	1,5 – 2,5
120	900/50	1,5 – 2,5
130	900/50	1,5 – 2,5
140	900/50	1,5 – 2,5
150	900/50	1,5 – 2,5
160	900/50	1,5 – 2,5
170	600/50	1,5 – 2,5
180	600/50	1,5 – 2,5

(H) height (mm)	package palette/bundle (pcs) on europalette	(L) length (m)
190	600/50	1,5 – 2,5
200	600/50	1,5 – 2,5
210	600/50	1,5 – 2,5
220	600/50	1,5 – 2,5
230	600/50	1,5 – 2,5
240	600/50	1,5 – 2,5

Reinforcements

Single-Sided Reinforcement Type J

Single-sided Type J reinforcement is used for both load-bearing and non-load-bearing lintels above windows and doors.



D1	5–14 mm
D2	4.6–7 mm
D3	5–14 mm
V	200 mm
H	70–400
L	1–3.5 m
T1	3–5 mm
T2	3–5 mm

Advantages

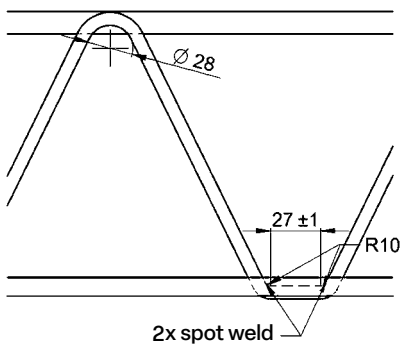
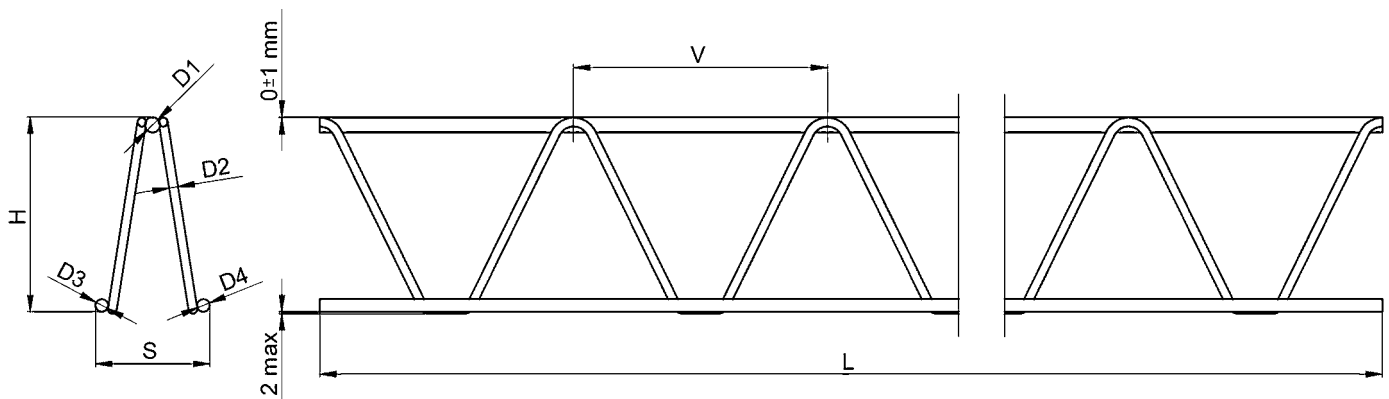
- Perfect strengthening of lintels
- Easy installation
- Saves time and labor



The products are manufactured in accordance with FK 004 and tested in our certified laboratory.

Reinforcements for Railway Sleepers

Reinforcements designed for prefabricated railway sleepers – embedded in concrete within the sleepers.



The diagonal can be terminated on the bottom or top flange.

Advantages

- Resistance to dynamic loads
- Robust design
- Long service life

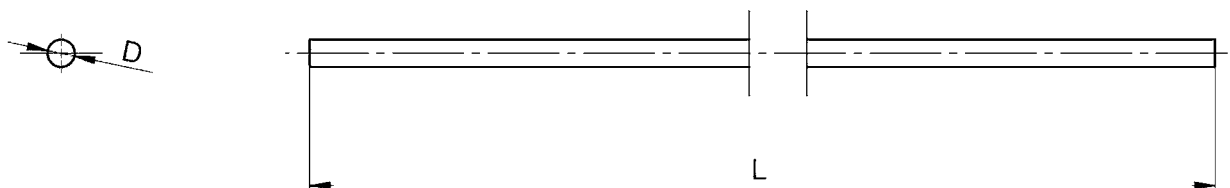


The products are manufactured in accordance with FK 005 and tested in our certified laboratory.

Reinforcing Steel

Reinforcing Steel (Bars)

Steel reinforcement bars used to strengthen concrete structures. Serves as reinforcement for foundations, ceilings, beams, columns, and panels.



B500A
B550A

L	0,97–12 m
D	6–12 mm

B500WR
B550WR

L	0,97–12 m
D	8–16 mm

Advantages

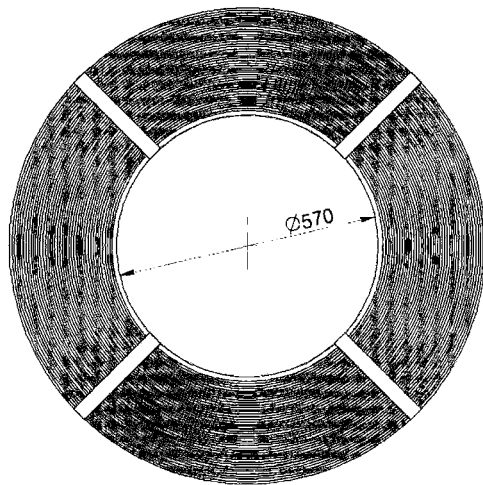
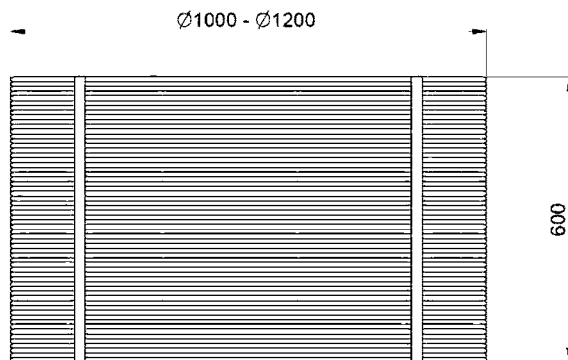
- Custom-made production
- Dimensions according to customer requirements



The products are manufactured in accordance with FK 002 and tested in our certified laboratory.

Reinforcing Steel (Coils)

Widely used in construction. Can be used, for example, to produce reinforcing steel bars, stirrups, and other reinforcement elements.



We manufacture reinforcing steel with diameters ranging from 4,6 mm to 12 mm in coils weighing 1 to 2,5 tons in grades B500A, B550A, B500A+G, and B550A+G.

Ribbed steel products are manufactured in accordance with the FK 002 standard and tested in our certified laboratory.

Smooth steel products are manufactured in accordance with the FK 008 standard and tested in our certified laboratory.

Advantages
• Adjustable weight



The products are manufactured in accordance with FK 007 and tested in our certified laboratory.

FERT®

Strength begins with us.



Our products meet the most stringent standards, are readily available, and thanks to our approach, you get exactly what your project needs.

With us, you gain a partner who will provide you with certainty from the first delivery to long-term cooperation.

FERT a.s.

Petra Bezruč 447/14

392 01 Soběslav

+420 381 521 166

obchodnici@fert.cz

Sales representatives:

Veronika Wortnerová | +420 605 598 864 | wortnerova@fert.cz

Jan Sklenář | +420 720 618 899 | sklenar@fert.cz

Ing. Oliver Pánek | +420 722 141 493 | panek@fert.cz



www.fert.cz
eshop.fert.cz