



A different kind of support at your disposal.



 **Kalstein**®

All Rights Reserved © KALSTEIN France S. A. S.,

LABORATORY SECTOR

**RECOMMENDED EQUIPMENT GUIDE
FOR THE LABORATORY SECTOR**

www.kalstein.com.br



All rights reserved KALSTEIN France S.A.S.,
3 Rue Jeanne Hachette Paris 75015, France
+33 6 11 37 13 51 / +33 7 46 33 63 09 / +33 9 83 04 38 83
<https://kalstein.net>
KALSTEIN FRANCE, S.A.S

Recommended equipment and services for the conditioning of the ideal laboratory.

This information is provided as a guideline, with the maintenance frequency based on the equipment's need, type, and previous performance, as well as the recommendations from the provided operation and maintenance manuals.



Recommended Laboratory Equipment

- | | |
|-------------------------------------|-------------------------|
| 1 INCUBATORS | 8 MICROSCOPES |
| 2 REFRIGERATORS AND FREEZERS | 9 pH METERS |
| 3 OVENS | 10 BALANCES |
| 4 WATER BATHS | 11 DISTILLERS |
| 5 CENTRIFUGES | 12 WATER SYSTEMS |
| 6 AUTOCLAVES | 13 PIPETTES |
| 7 BIOSAFETY CABINETS | |



Endereço Rua Brasília Cuman 427 – Curitiba/PR
Telephone: +55 41 99524-6561
E-mail: contato@brasimp.net.br
Site: www.brasimp.net.br / <https://kalstein.com.br/>



All Rights reserved KALSTEIN FRANCE S.A.S
3 RUE JEANNE HACHETTE PARIS 75015, FRANCE
+33 6 11 37 13 51 / +33 7 46 33 63 09 / +33 9 83 04 38 83
<https://kalstein.net/>
KALSTEIN FRANCE S.A.S

Here is a list of some basic laboratory equipment that is normally found

Here is a list of some basic laboratory equipment that is normally found.



Microscope: Used for the observation and analysis of small samples and particles.

Centrifuges: Used to separate different components of a liquid sample by spinning it at high speeds.

Pipettes: Used to measure and dispense small quantities of liquid.

Glassware: Such as beakers, bottles, and test tubes, used for mixing, heating, and observing chemical reactions.

Incubators: Used to maintain a controlled temperature and environment for biological samples

Hot plate or stirrer: Used to heat and stir solutions.

pH Meter: Used to measure the acidity or alkalinity of a solution.

Balances: Used to weigh samples with precision.

Laminar flow hood: Used to maintain a sterile environment for handling samples.

Refrigerator/Freezer: Used to store samples at specific temperatures. It is important to note that the specific equipment will depend on the type of laboratory. For example, in a microbiology laboratory, you will find equipment such as autoclaves, incubators with different temperature ranges, and microscopes with specific features.



Endereço Rua Brásilio Cuman 427 – Curitiba/PR
Telefone: +55 41 99524-6561
E-mail: contato@brasimp.net.br
Site: www.brasimp.net.br / <https://kalstein.com.br/>



All Rights reserved KALSTEIN FRANCE S.A.S
3 RUE JEANNE HACHETTE PARIS 75015, FRANCE
+33 6 11 37 13 51 / +33 7 46 33 63 09 / +33 9 83 04 38 83
<https://kalstein.net/>
KALSTEIN FRANCE S.A.S

INCUBATORS

Clean and disinfect internal surfaces (Monthly).

Types of Laboratory Incubators:



How to Improve the Performance of an Incubator?

A laboratory incubator is equipment used to culture and maintain bacteria.



CO2 Incubators: What Are the Different Types?

CO2 incubators are advanced equipment used in development.



How Does a Laboratory Incubator Work?

Laboratory incubators are crucial tools in research transformation.



What Are the Different Types of Laboratory Incubators?

Undoubtedly, incubators play a specific role within a laboratory.

Want to know more?

[Click here](#)



Types of Incubators a Laboratory May Need:



YR06254 Shaker Incubator

The shaker incubator is suitable for scientific research departments, such as universities and chemical industries.



Microbiology Incubator YR02056 / YR02058

With constant temperature and humidity control, the incubator is an essential piece of equipment.



CO2 Incubator YR02049-1

Used in cell culture, microbiology research, pathology, and other areas of biological sciences, this incubator creates an ideal environment.



YR06256 Shaker Incubator

The shaker incubator is suitable for scientific research departments, such as universities and chemical industries.

Want to know more?

[Click here](#)



Endereço Rua Brasília Cuman 427 – Curitiba/PR
Telephone: +55 41 99524-6561
E-mail: contato@brasimp.net.br
Site: www.brasimp.net.br / https://kalstein.com.br/



All Rights reserved KALSTEIN FRANCE S.A.S
3 RUE JEANNE HACHETTE PARIS 75015, FRANCE
+33 6 11 37 13 51 / +33 7 46 33 63 09 / +33 9 83 04 38 83
https://kalstein.net/
KALSTEIN FRANCE S.A.S

REFRIGERATORS AND FREEZERS

Refrigerators and freezers play a crucial role in maintaining the integrity of laboratory samples.

Analysis of the Best Refrigerators and Freezers for Your Laboratory:



How Many Types of Freezers for Laboratory Ultrasound Are There?

Ultra-freezers are one of the main tools used in laboratories.



Storage of Hematologic Plasmas with the Use of Laboratory Freezers

A laboratory freezer is a piece of equipment used to store samples.



What Are the Different Applications of a Laboratory Refrigerator and What Are They Used For?

A refrigerator is a piece of equipment specially designed for laboratory use.



Freezers and COVID Vaccines

A freezer is a piece of refrigeration equipment that has a thermally insulated compartment, which helps it stay cool and thus

Want to know more?

[Click here](#)



At Kalstein, you will find the ideal refrigerators and freezers for your laboratory:



Biomedical Freezer -30°C with Forced Air Cooling YR05308-1

Applied in the storage of critical and temperature-sensitive biological samples.



Ultra Low Temperature Laboratory Freezer YR05297

Ultra-low temperature -86°C medical freezer for laboratory. This product is designed and manufactured for long-term storage...



588L Ultra Low Temperature -86°C Medical Freezer for Laboratory/Hospital YR05299

Applications include blood banks, hospitals, epidemic prevention services...



Upright Freezer with Sprayed Colored Steel YR05307

The product is widely used to store biological materials, such as vaccines, blood plasma, etc. Our medical freezer has been shipped to many countries, including some of the most renowned...



Endereço: Rua Brásilio Cuman 427 - Curitiba/PR
Telefone: +55 41 99524-6561
E-mail: contato@brasimp.net.br
Site: www.brasimp.net.br / https://kalstein.com.br/



All Rights reserved KALSTEIN FRANCE S.A.S
3 RUE JEANNE HACHETTE PARIS 75015, FRANCE
+33 6 11 37 13 51 / +33 7 46 33 63 09 / +33 9 83 04 38 83
https://kalstein.net/
KALSTEIN FRANCE S.A.S

Want to know more?

[Click here](#)



OVENS

In the ever-evolving world of laboratory equipment, the role of ovens (or furnaces) cannot be underestimated..

At Kalstein, you can find the ideal ovens for your laboratory:



What Are The Differences Between Drying Oven, Muffle And Laboratory Incubator?

Within the laboratory and industrial sectors, there is a wide variety of furnaces, each with specific characteristics...



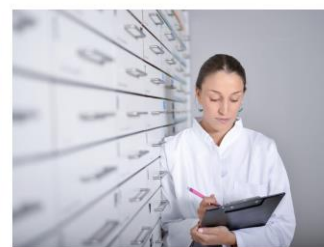
What Are The Differences Between Drying Oven, Muffle And Laboratory Incubator?

Within the laboratory and industrial sectors, there is a wide variety of furnaces, each with specific characteristics...



Laboratory Oven is the Same as Laboratory Oven?

Laboratory stoves, also called laboratory ovens, are equipment used to dry and sterilize laboratory materials and instruments, as well as...



Laboratory Stoves and Muffles: What are the Differences and Applications?

It is an essential piece of equipment in laboratories, also known as a drying oven. It is used to dry and sterilize glass and metal containers...

Want to know more?

[Click here](#)



Types of Laboratory Ovens a Laboratory May Need:



Electric Heating Stove
YR05244 // YR05247

Intelligent PID control via microcomputer, temperature control with high precision LED display, timer, alarm.



Single Door Industrial Air Drying Oven
YR05256 // YR05258

Intelligent temperature control by microcomputer, digital display; centrifugal wind wheel, uniform heat flow; Ample studio space, fast, wide and homogeneous heat circulation...



Electric Heating Drying Oven YR06446

The intelligent PID control system via microcomputer with precision LCD offers temperature control capabilities...



Vacuum Drying Oven
YR05265-1 (SS) // YR05995 (S)

Vacuum drying oven widely used in biochemistry, chemical and pharmaceutical, health, agricultural research, protection.

Want to know more?

[Click here](#)



Endereço Rua Brasília Cuman 427 - Curitiba/PR
Telefone: +55 41 99524-6561
E-mail: contato@brasimp.net.br
Site: www.brasimp.net.br / https://kalstein.com.br/



All Rights reserved KALSTEIN FRANCE S.A.S
3 RUE JEANNE HACHETTE PARIS 75015, FRANCE
+33 6 11 37 13 51 / +33 7 46 33 63 09 / +33 9 83 04 38 83
https://kalstein.net/
KALSTEIN FRANCE S.A.S

WATER BATH

Drain, clean, disinfect, and refill (monthly or every 6 months) if a biocide is used.

Discover the ultimate relaxation experience with our premium range of water baths, exclusively at Kalstein:



What Are the Recommendations for the Use of Water Baths in the Laboratory?

Water baths are used in a variety of studies and tests, including enzymatic reaction studies, observations of growth...



Recirculating Bath with Cooling: Types and Uses

A recirculation bath is a laboratory device, consisting of a water bath with a built-in recirculation pump, being an ideal equipment for any application where temperature maintenance is required...



How the Transparent Water Bath Works?

The transparent water bath is a common piece of equipment in many laboratories. It is used for a variety of tasks, including incubation of cultures, testing of serological samples...



What Kind of Water Should Be Used for a Water Bath?

Water baths are equipment that allow you to maintain a uniform temperature necessary for different tests and laboratory analyses. Therefore, the type of water to be used depends on the tests and samples...

Want to know more?

[Click here](#)



At Kalstein, you can find the ideal water baths for your laboratory:



Cooling and Heating Circulation Bath YR04986

The YR series of heating and cooling circulators offers a liquid environment with a constant temperature of -40°C to 100°C. The tank is made of 304 stainless steel...



Oil Bath: Intelligent Microcomputer YR04973 // YR04976

YR oil bath series is widely used in bioengineering, medicine, food, chemical industry, gold treatment, petroleum and other fields. It offers users high precision...



Cooling and Heating Circulation Pump YR05001

YR series heating and cooling circulation pump is the most widely used for chemical reactors. Features: high temperature cooling...



Circulating Heating Bath YR04977 // YR04984

YR series heating circulation bath provides temperatures of 100°C, 200°C and can be customized to achieve 300°C constant temperature...



Endereço Rua Brasília Cuman 427 - Curitiba/PR
Telefone: +55 41 99524-6561
E-mail: contato@brasimp.net.br
Site: www.brasimp.net.br / https://kalstein.com.br/



All Rights reserved KALSTEIN FRANCE S.A.S
3 RUE JEANNE HACHETTE PARIS 75015, FRANCE
+33 6 11 37 13 51 / +33 7 46 33 63 09 / +33 9 83 04 38 83
<https://kalstein.net/>
KALSTEIN FRANCE S.A.S

Want to know more?

[Click here](#)



LABORATORY CENTRIFUGES

Centrifuges are essential laboratory equipment used to separate components of a liquid suspension based on their density.

Review of the Best Centrifuges for Your Lab:



What Are the Applications for High Speed Centrifuges and Low Speed Centrifuges?

Generally, centrifuges are equipment that perform rotary movements...



What Is the Centrifuge Used for in the Nuclear Sector?

The centrifuge is used in the nuclear sector to isolate materials and remove contaminants...



Laboratory Centrifuges: Care and Maintenance?

The care and maintenance of this laboratory equipment is indispensable...



Centrifuge: When to Use an Angled Rotor and a Horizontal Rotor?

This is an indispensable piece of equipment for any laboratory...

Want to know more?

[Click here](#)



At Kalstein, you will find the ideal centrifuges for your laboratory:



YR124 Low Speed Refrigerated Centrifuge

It features microcomputer control, electronic latching, and a high-torque AC variable conversion motor. Imported compressor unit with CFC-free refrigerant...



High Speed Refrigerated Centrifuge YR0111-4

A centrifuge is a type of machine that separates solid, liquid, or solid phases by the action of centrifugal force. The rotor is the main component of the centrifuge, responsible for the...



High Speed Refrigerated Centrifuge YR0114

The models are centrifuges used to collect microorganisms and cell samples. The maximum RCF of these high-speed centrifuges is 52,000 g, with a maximum speed of 22,000...



YR012G Large Capacity Mini Centrifuge

Featuring cutting-edge international design and manufacturing techniques, this mini centrifuge has an elegant and attractive appearance, as well as a compact and stable structure...

Want to know more?

[Click here](#)



Endereço Rua Brasília Cuman 427 - Curitiba/PR
Telefone: +55 41 99524-6561
E-mail: contato@brasimp.net.br
Site: www.brasimp.net.br / https://kalstein.com.br/



All Rights reserved KALSTEIN FRANCE S.A.S
3 RUE JEANNE HACHETTE PARIS 75015, FRANCE
+33 6 11 37 13 51 / +33 7 46 33 63 09 / +33 9 83 04 38 83
<https://kalstein.net/>
KALSTEIN FRANCE S.A.S

AUTOClaves

Autoclaves are vital equipment in laboratory environments, ensuring the sterilization of various instruments and materials to prevent contamination and maintain accurate results.

Review of the Best Autoclaves for Your Lab:



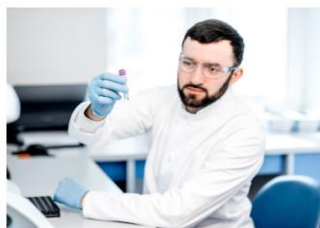
What Are the Safety Protocols for Dental Sterilization with the Use of Gas Autoclave?

In the field of health, sterilization is a process that eliminates all living organisms...



What Is an Autoclave?

An autoclave is a piece of equipment used to sterilize medical or laboratory material, using steam under pressure and temperature as sterilizing agents. This makes it possible to eliminate...



Maximize Infection Prevention with Autoclaves

As a healthcare professional, it is essential to know and understand the unmatched importance of autoclave sterilizers.



What Is a Drying Autoclave?

An autoclave is essentially a pressure vessel that uses steam under high pressure.

Want to know more?

[Click here](#)



At Kalstein, you will find the ideal autoclaves for your laboratory:



Portable Pressure Steam Autoclave YR05698 // YR05700

High quality SUS304 stainless steel. Electric heating system. Silicone seal. Pressure gauge with dual scale indication. Double safety valve. Easy operation, safe and reliable...



Low Price Vertical Pressure Steam Sterilizer YR05682 // YR05687

Fully 304 stainless steel frame. Microprocessor control, with indicator light showing working status: pressure...



LCD Display Pulsating Vacuum Autoclave with YR05673 Printer // YR05675

Automatically controlled by microprocessor, LCD display of working status, touch key. The temperature is dynamically displayed...



Portable Steam Autoclave with Digital Display YR05701 // YR05703

Quick-open door with handwheel. High quality SUS304 stainless steel material. Electric heating system. Pressure gauge indicator with dual scale..

Want to know more?

[Click here](#)



Endereço Rua Brasília Cuman 427 - Curitiba/PR
Telephone: +55 41 99524-6561
E-mail: contato@brasimp.net.br
Site: www.brasimp.net.br / https://kalstein.com.br/



All Rights reserved KALSTEIN FRANCE S.A.S
3 RUE JEANNE HACHETTE PARIS 75015, FRANCE
+33 6 11 37 13 51 / +33 7 46 33 63 09 / +33 9 83 04 38 83
https://kalstein.net/
KALSTEIN FRANCE S.A.S

SAFETY CABINETS / LAMINAR FLOW CABINETS

In the realm of laboratory equipment, biosafety cabinets and fume hoods play a key role in ensuring a safe and controlled environment.

Review of the Best Laminar Flow Hoods, Clean Bench, and Biosafety Cabinets for Your Lab:



What Are the Differences Between Laminar Flow Hoods and Type I Biosafety Cabinet?

A laminar flow hood is a piece of equipment used in laboratories with the aim of providing an environment for the development of the body.



Horizontal Laminar Flow

Horizontal laminar flow hoods are those in which the HEPA filter is placed at the rear of the cab, so that...



Laminar Flow hood: Why They Are Used?

A laminar flow cabinet is a laboratory instrument used to create a contamination-free environment...



Biosafety Cabinet for PCR

A biosafety cabinet for polymerase chain reaction (PCR) work is a laboratory equipment that can be used to work with polymerase chain reactions.

Want to know more?

[Click here](#)

Model Catalog of Laminar Flow Fume Hoods, Clean Bench and Biosafety Cabinet for Your Laboratory:



YR05736 Laminar Flow Cabinet

Adopting an arbitrary positioning sliding door system, the housing is welded by cold-rolled plates, with sprayed surface.



YR05741 Laminar Flow Cabinet

This is a kind of clean workbench widely used in medical treatment, chemical experiments, electronics, precision machinery...



Laminar Flow Cabinet (One Person) YR05268 // YR05269

Applicable in the fields of biotechnology protection, pharmaceuticals, life sciences and precision electronics...



Laminar Flow Cabinet YR06430 // YR06430-1

The laminar flow cabinet is an advanced piece of equipment designed to provide a clean working environment...

Want to know more?

[Click here](#)



Endereço Rua Brasília Cuman 427 - Curitiba/PR
Telefone: +55 41 99524-6561
E-mail: contato@brasimp.net.br
Site: www.brasimp.net.br / https://kalstein.com.br/



All Rights reserved KALSTEIN FRANCE S.A.S
3 RUE JEANNE HACHETTE PARIS 75015, FRANCE
+33 6 11 37 13 51 / +33 7 46 33 63 09 / +33 9 83 04 38 83
https://kalstein.net/
KALSTEIN FRANCE S.A.S

MICROSCOPES

Exploring the world of microscopy reveals a universe of complexities invisible to the naked eye.

At Kalstein, you will find the ideal Microscopes for your laboratory:



Functions of the Microscope for the Development of Monkeypox Vaccines

Monkeypox, also known as seismic pox, is a disease like...



What is the Most Commonly Used Microscope and Why?

The microscope allows you to observe samples that are almost invisible to the human eye and, in laboratories...



Use of Microscope for Analysis of Tissues Caused by Hantavirus (SPHV)

Hantavirus is a zoonotic viral disease caused by hantavirus. Wearers...



Types of Microscopes for Laboratory and Field

The microscope is an instrument that allows you to observe elements or structures that cannot be seen with the naked eye, using lenses, viewfinders and light rays, which provide...

Want to know more?

[Click here](#)



Types of Microscopes a Lab May Need:



40x Phase Contrast Achromatic Microscope YR05792-2

Sliding binocular head, tilted at 30°, rotates 360°. 4x, 10x, 100x achromatic lenses, and 40x achromatic phase contrast...



Biological Microscope YR0242-M // YR0242-T

Monocular, binocular, trinocular and teaching head available for choice. Quad turret with precise click stop. Integrated double layer, 360° rotatable, quad turret...



Infinite Plane Binocular Laboratory Biological Microscope YR05787 – YR05788

Inclined to 30°, 360° rotatable, interpupillary distance from 48 to 75 mm, high point of view eyepiece. 4 sets of objectives available: achromatic, infinite plane...



Portable Dual Lens Digital Microscope + USB YR05783 // YR05786

Teaching Head, WF10x, WF16x, Quadruple Handgun, Ach. 4x, 10x, 40x, 100x, mechanical table 115x125mm, coaxial focus, LED, with...

Want to know more?

[Click here](#)



Endereço Rua Brasília Cuman 427 – Curitiba/PR
Telephone: +55 41 99524-6561
E-mail: contato@brasimp.net.br
Site: www.brasimp.net.br / https://kalstein.com.br/



All Rights reserved KALSTEIN FRANCE S.A.S
3 RUE JEANNE HACHETTE PARIS 75015, FRANCE
+33 6 11 37 13 51 / +33 7 46 33 63 09 / +33 9 83 04 38 83
https://kalstein.net/
KALSTEIN FRANCE S.A.S

PH METERS

Clean electrode (every time they are used)

In Kalstein, you can find the pH meter or turbidimeter for your laboratory:



Using the pH Meter to Determine the Degree of Reduction of a Sample

The pH meter is used to determine the degree of reduction of a sample. This is important because it indicates the amount...

pH meter or pH meter: How it should be used?

A pH meter is an instrument used to measure the acidity or alkalinity of a solution. The information provided by this equipment indicates the degree of acidity...

What are the steps to use and calibrate a meter?

It is important to follow the manufacturer's instructions and recommendations for the use and calibration of a pH meter, because to obtain a correct value...

pH meter, water pH, milk pH, and human body pH

pH is a parameter used to measure the concentration of the hydrogen ion $[H^+]$ in a solution. In the definition of pH, it is the negative logarithm in base 10 of the...

Want to know more?

[Click here](#)



Types of pH Meters a Lab May Need:

 [Kalstein](#)



pH Meter YR01821

This advanced measuring instrument features a 6.5-inch LED screen with a concise and easy-to-use interface. It includes an integrated microprocessor chip that offers smart functions such as...

 [Kalstein](#)



Benchtop pH/Ion Meter YR01825

This advanced measuring device features a 7-inch color capacitive touch screen, with a high resolution of 1024x600 and excellent sensitivity, providing a superior user experience...

 [Kalstein](#)



Bench pH Meter YR01822

This sophisticated measuring device sports a 6.5-inch LED screen, with an intuitive and easy-to-use interface. It features an integrated microprocessor chip that provides intelligent functions such as...

 [Kalstein](#)



Bag pH Meter – °C/°F YR01800 – YR01800-1

The Pen Type - YR01800 pH Meter series features a compact, mini design, making it highly portable and convenient for on-the-go use. It incorporates intelligent functions...

Want to know more?

[Click here](#)



Endereço Rua Brasília Cuman 427 – Curitiba/PR
Telefone: +55 41 99524-6561
E-mail: contato@brasimp.net.br
Site: www.brasimp.net.br / <https://kalstein.com.br/>



All Rights reserved KALSTEIN FRANCE S.A.S
3 RUE JEANNE HACHETTE PARIS 75015, FRANCE
+33 6 11 37 13 51 / +33 7 46 33 63 09 / +33 9 83 04 38 83
<https://kalstein.net/>
KALSTEIN FRANCE S.A.S

LABORATORY BALANCES

When it comes to laboratory equipment, precision and accuracy are of utmost importance

At Kalstein, you can find the balances for your laboratory:



Why It's Important to Use the Analytical Balance for Cleaning Products Manufacturing?

Cleaning products are of great use nowadays, as they allow the removal of dirt and other...



Analytical balance to develop drugs against dermatitis

Analytical balances are weighing units that allow you to record the quantities used in laboratories, calculate the weight of the raw material for the manufacture of products...



How is the analytical balance used to produce Parkinson's treatment?

In the late 19th century, scientists began to suspect that a lack of a chemical in the brain could be causing Parkinson's disease.



What are the components of the pediatric lab balance?

Pediatric scales are equipment generally used by pediatric professionals and by parents at home and are designed to weigh and measure children.

Want to know more?

[Click here](#)



Types of Balances a Lab May Need:



Analytical Balance
YR05779 // YR05781

Aluminum housing, large windproof cover, LED (green), LCD, tare function, counting, overload alarm, level indicator. Option: underwear, printing...



Multifunctional scale YR05615 // YR05619

Appearance design and utility model, access to patents. 7-inch touch screen, large range and high accuracy. Large stainless-steel pot. AC and DC power supply. Date/time...



Analytical Balance
YR05769 // YR05773

Electromagnetic sensor (internal calibration), aluminum housing, large windproof cover, LCD (white backlight with black source). Tare function, counting, unit conversion...



Internal Calibration Analytical Balance YR05568 // YR05572

The YR05568/YR05572 high-performance balance series includes analytical balances with the highest measurement performance. They are equipped with a highly integrated system...

Want to know more?

[Click here](#)



Endereço Rua Brasília Cuman 427 - Curitiba/PR
Telefone: +55 41 99524-6561
E-mail: contato@brasimp.net.br
Site: www.brasimp.net.br / https://kalstein.com.br/



All Rights reserved KALSTEIN FRANCE S.A.S
3 RUE JEANNE HACHETTE PARIS 75015, FRANCE
+33 6 11 37 13 51 / +33 7 46 33 63 09 / +33 9 83 04 38 83
<https://kalstein.net/>
KALSTEIN FRANCE S.A.S

LABORATORY WATER SYSTEMS

In the realm of laboratory equipment, water purification systems play a vital role in ensuring accurate and reliable results.

At Kalstein, you can find the water systems for your laboratory:



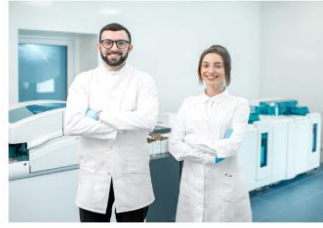
How to Select Your Ideal Water Purification System

Water purification systems are essential equipment in any home or work environment, if it is believed that the water used has meet pollutants.



How is the filter changed in the water purification system in the laboratory?

Water production and maintenance of a water purification system must be simple and efficient, ensuring the quality of the water used in the laboratory.



Deionization and Reverse Osmosis: What are their differences?

Water purification processes are varied, and the choice of one of them will depend on the user's needs, as each one has specific characteristics and benefits.



Different water purification systems in a laboratory

It is essential for the work of laboratories to use purified water, not only to wash the instruments used, but also to ensure the accuracy and reliability of the experimental results.

Want to know more?

[Click here](#)



Types of Water Systems a Lab May Need:



YR54/YR54-3 Water Purification System

Atomic absorption/emission spectroscopy, mass spectrometry, TOC detection, environmental monitoring, development of bi-chips, analysis of traces of organic matter...



YR59 - YR59-1 Water Purification Systems

Ultrapure water machine front system, buffer configuration, photosensitive film washing, water supply for stability experiment boxes, weather experiments...



YR60-1 Water Purification System

ABS engineering plastic housing, powder coating technology, with water quality and quantity upgrade function, self-priming door. Quick-insert, U-type, Made in Korea...



YR53/YR53-1 Ultrapure Water System

Atomic absorption/emission spectroscopy, mass spectrometry, TOC detection, environmental monitoring, biochip development, residual organic matter analysis. The system adopts...

Want to know more?

[Click here](#)



Endereço Rua Brasília Cuman 427 - Curitiba/PR
Telefone: +55 41 99524-6561
E-mail: contato@brasimp.net.br
Site: www.brasimp.net.br / https://kalstein.com.br/



All Rights reserved KALSTEIN FRANCE S.A.S
3 RUE JEANNE HACHETTE PARIS 75015, FRANCE
+33 6 11 37 13 51 / +33 7 46 33 63 09 / +33 9 83 04 38 83
<https://kalstein.net/>
KALSTEIN FRANCE S.A.S

PIPETTES

When it comes to precision and accuracy in lab work, having the right tools at your disposal is crucial.

At Kalstein, you can find the pipettes for your laboratory:



Micropipettes: fixed, variable and multichannel volume

A micropipette is a laboratory equipment used to absorb and transfer small volumes of liquids, allowing its use in different laboratory techniques.



What are the types of micropipettes for laboratories?

A micropipette is a laboratory device used to absorb and transfer small volumes of liquids, allowing them to be handled in different laboratory techniques. The place where...



Micropipettes: fixed, variable and multichannel volume

A micropipette is a piece of laboratory equipment used to absorb and transfer small volumes of liquids, allowing its use in different laboratory techniques...



Micropipette for the determination of glucose

There are many different instruments that can be used to measure the concentration of glucose in a solution. One of these...

Want to know more?

[Click here](#)

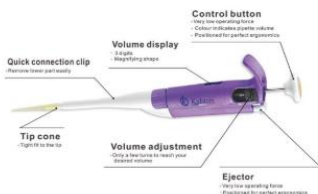


Types of Pipettes a Lab May Need:



Multichannel Pipettes for Liquid Handling
YR03736/YR03736-2

The YR Pipettes series is a new mechanical line. Air-displacement pipette that offers a volume lock and is one of the most beautiful externally among pipettes. Enjoy a...



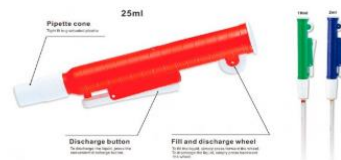
Liquid Handling Pipettes
YR03732/YR03732-8

The YR pipette series is designed and manufactured to provide you with a variety of robust, precise and accurate pipettes. These models are fixed volume, with air displacement...



Pipette Rack – YR03744
YR03743

Enjoy and organize the workplace with our swivel pipette holder. The pipette is attached to the holder by the handle rather than the nasal cone, which rules out potential cross-contamination of the pipette holder. As we have our production facility...



Pipette Pump YR03738 –
YR03740

Convenient and effortless operation. The pipette pump provides easy and accurate pipetting. The pumps feature a lever for quick release and forward or backward wheel movement...

Want to know more?

[Click here](#)



Endereço: Rua Brasília Cuman 427 – Curitiba/PR
Telefone: +55 41 99524-6561
E-mail: contato@brasimp.net.br
Site: www.brasimp.net.br / <https://kalstein.com.br/>



All Rights reserved KALSTEIN FRANCE S.A.S
3 RUE JEANNE HACHETTE PARIS 75015, FRANCE
+33 6 11 37 13 51 / +33 7 46 33 63 09 / +33 9 83 04 38 83
<https://kalstein.net/>
KALSTEIN FRANCE S.A.S

SPECTROPHOTOMETERS

Discover the versatility and reliability of our spectrophotometers, customized to meet the diverse needs of researchers and scientists in different industries.

Analysis of the best Spectrophotometers for your laboratory:



Use of the Multi-Angle Spectrophotometer for enamel manufacturing

A spectrophotometer is an analytical instrument that allows you to measure, in a sample, the properties of the spectrophotometer.



Where is Spectrophotometry Applied?

Spectrophotometry is an analytical technique that allows determining the concentration of a compound in a solution...



What is a beam of light in a spectrophotometer?

The light beam of a spectrophotometer projects monochromatic luminescence onto a sample...



What Technology Does a Spectrophotometer Use?

A spectrophotometer is a piece of laboratory equipment used to measure the absorbance of a sample, as a function of...

Want to know more?

[Click here](#)



Types of Spectrophotometers a Lab May Need:



Non-contact spectrophotometer YR05481

The YR05481 spectrophotometer is a color measurement instrument that adopts D/8 (diffuse illumination, 8° direction reception), with SCI including specular reflection...



Handheld Color Spectrophotometer YR05498

YR05498 handheld color spectrophotometer not only helps to carry out color matching and management studies, but also controls the product quality management...



Handheld Color Spectrophotometer YR05497

The YR05497 handheld color spectrophotometer not only helps to carry out color matching and management studies, but also controls the quality management of the product...



Micro Spectrophotometer YR06035

The YR06035 is an advanced UV-VIS micro spectrophotometer model with full wavelength range (200-800 nm). It has a new function added to measure bacteria...

Want to know more?

[Click here](#)



Endereço Rua Brasília Cuman 427 - Curitiba/PR
Telefone: +55 41 99524-6561
E-mail: contato@brasimp.net.br
Site: www.brasimp.net.br / https://kalstein.com.br/



All Rights reserved KALSTEIN FRANCE S.A.S
3 RUE JEANNE HACHETTE PARIS 75015, FRANCE
+33 6 11 37 13 51 / +33 7 46 33 63 09 / +33 9 83 04 38 83
<https://kalstein.net/>
KALSTEIN FRANCE S.A.S

ANALYZERS

Our analyzers are equipped with state-of-the-art features and functionality to streamline your lab workflows

Review of the best analyzers for your lab:



What are the different types of lab analyzers out there?

We can find different types of analyzers according to their applications or operation...



What Are the Different Types of Hematology Analyzers?

These kits are used for complete blood counts and perform a quantitative and qualitative analysis of blood factors...



What are the types of reagent analyzers available?

In a laboratory, it is very important to understand the usefulness of each piece of equipment...



Hematology analyzers and biochemistry analyzers: what are the differences?

The differences between these pieces of equipment are mainly focused on their applications. Hematology analyzers are used for tests involving...

Want to know more?

[Click here](#)



Types of Analyzers a Lab May Need:

 [Kalstein](#)



HbA1c Analyzer YR05129

The HbA1c Analyzer is an advanced and compact device specifically designed to measure glycated hemoglobin (HbA1c) levels in whole blood samples. This equipment provides fast and accurate results in just a few minutes.

 [Kalstein](#)



Digestion Instrument YR06298

The YR06298 model of the Digestion Instrument is an advanced and versatile solution designed to meet the most demanding needs in laboratories and research environments. Equipped with a large...

 [Kalstein](#)



Immunoassay analyzer: fast results YR06389

The YR06389 Immunoassay Analyzer is an advanced device designed to provide fast and accurate results in emergency ambulatory inspection environments, clinical laboratories, and more.

 [Kalstein](#)



BOD Analyzer YR06297

The BOD analyzer YR06297 is an advanced device designed to measure Biochemical Oxygen Demand (BOD) using the international mercury-free pressure difference method. Equipped with six independent analyzers...

Want to know more?

[Click here](#)



Endereço Rua Brasília Cuman 427 - Curitiba/PR
Telephone: +55 41 99524-6561
E-mail: contato@brasimp.net.br
Site: www.brasimp.net.br / <https://kalstein.com.br/>



All Rights reserved KALSTEIN FRANCE S.A.S
3 RUE JEANNE HACHETTE PARIS 75015, FRANCE
+33 6 11 37 13 51 / +33 7 46 33 63 09 / +33 9 83 04 38 83
<https://kalstein.net/>
KALSTEIN FRANCE S.A.S

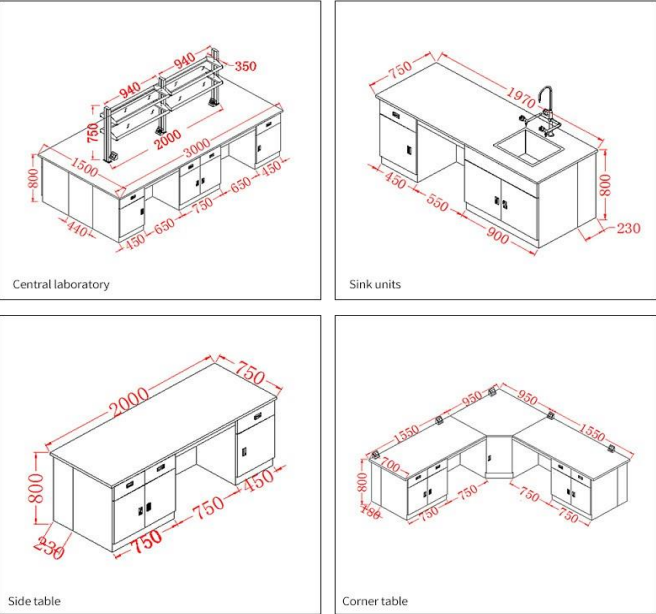
LABORATORY

Find out how you can equip your lab with Kalstein stainless steel furniture!

Clean and disinfect work surfaces daily and during use. Clean floors and sanitize sinks (daily). Other surfaces should be cleaned every 3 months.

1 Model

Choose the furniture from the different models according to the dimensions of the area



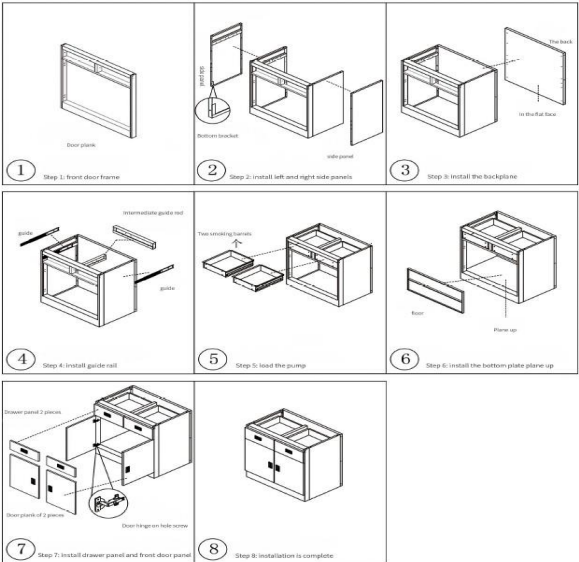
2 Material

You will receive the material, manual and parts you need to assemble your laboratory easily, quickly and independently.



3 Assembly

The manuals are specific, precise and explain, step by step, what to do to complete the installation.



4 Soon!

Once you have completed all the steps mentioned above, you can position the stainless steel furniture in your lab area.



Endereço: Rua Brasília Cuman 427 – Curitiba/PR
Telefone: +55 41 99524-6561
E-mail: contato@brasimp.net.br
Site: www.brasimp.net.br / <https://kalstein.com.br/>



All Rights reserved KALSTEIN FRANCE S.A.S
3 RUE JEANNE HACHETTE PARIS 75015, FRANCE
+33 6 11 37 13 51 / +33 7 46 33 63 09 / +33 9 83 04 38 83
<https://kalstein.net/>
KALSTEIN FRANCE S.A.S

Here are some basic lab equipment which are commonly used in laboratories **research and its applications:**

Microscopes: These are used to observe and analyze microorganisms and particles in water samples.

Centrifuge: This machine is used to separate different components of a water sample, such as plankton and sediments.

Pipettes: These are employed to measure and dispense small volumes of liquid.

pH Meter: This instrument is used to measure the acidity or basicity of a water sample

Spectrophotometer: This instrument is used to measure the absorbance or transmittance of light by a sample, which can be used to determine the concentration of various chemical compounds.

Incubators: These are used to maintain a specific temperature and environment for experiments involving living organisms.

Refrigerator and freezer: These are used to store samples that need to be kept at a low temperature.



Glass: Glassware, such as beakers, vials, and test tubes, are used to store and handle samples.

Sample Vials: These are used to store and transport water samples.

Laboratory safety equipment: Personal protective equipment and safety equipment, such as goggles, lab coats, and gloves, are essential to ensure the safety of researchers



Endereço Rua Brasília Cuman 427 – Curitiba/PR
Telefone: +55 41 99524-6561
E-mail: contato@brasimp.net.br
Site: www.brasimp.net.br / https://kalstein.com.br/



All Rights reserved KALSTEIN FRANCE S.A.S
3 RUE JEANNE HACHETTE PARIS 75015, FRANCE
+33 6 11 37 13 51 / +33 7 46 33 63 09 / +33 9 83 04 38 83
https://kalstein.net/
KALSTEIN FRANCE S.A.S