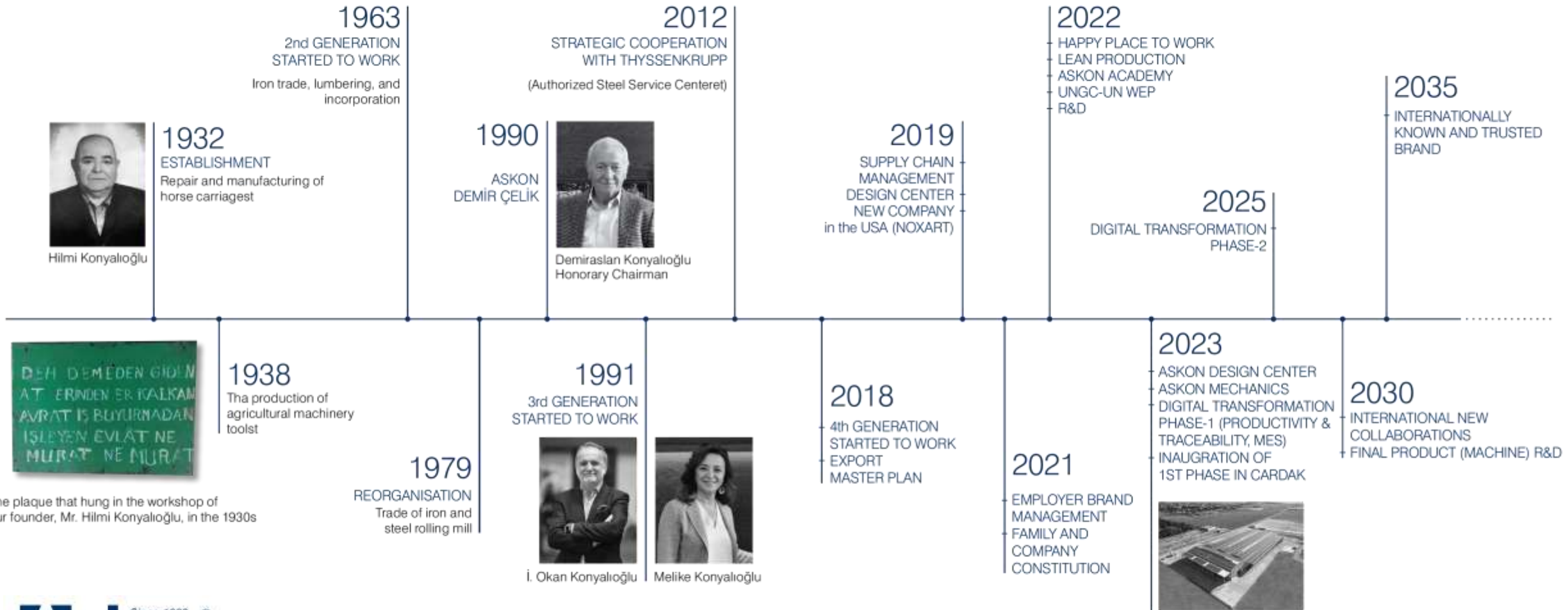




Your Steel Service Center

100th year loading

A decorative graphic consisting of a series of parallel diagonal lines in dark blue and light blue, followed by a large light blue arrow pointing to the right. The year '2032' is positioned to the right of the arrow.



Our Locations

Today, we have become a steel service center leading the future of the industry by providing world-class services at 6 domestic locations and 2 international locations.



ASKON HEADQUARTERS: Hacıyüplü Neighborhood, Akça Street, No:149, Merkezefendi/Denizli

ASKON MECHANICS ÇARDAK : Denizli Çardak OSB neighbourhood 5th Street, Askon Mechanics No: 2/2, Çardak/Denizli

ASKON WAREHOUSE: Hacıyüplü Neighborhood, Akça Street. No:160 Merkezefendi/Denizli

GEBZE WAREHOUSE: Marmara Recycling Industrial Site Şekerpınar Neighborhood, Fevzi Çakmak Avenue, Başak Street, No:16, Gebze/Kocaeli

ASKON ÇARDAK: Denizli Çardak Organized Industrial Zone Neighborhood, 5th Avenue, 2101 Street, No:2, Çardak - Denizli

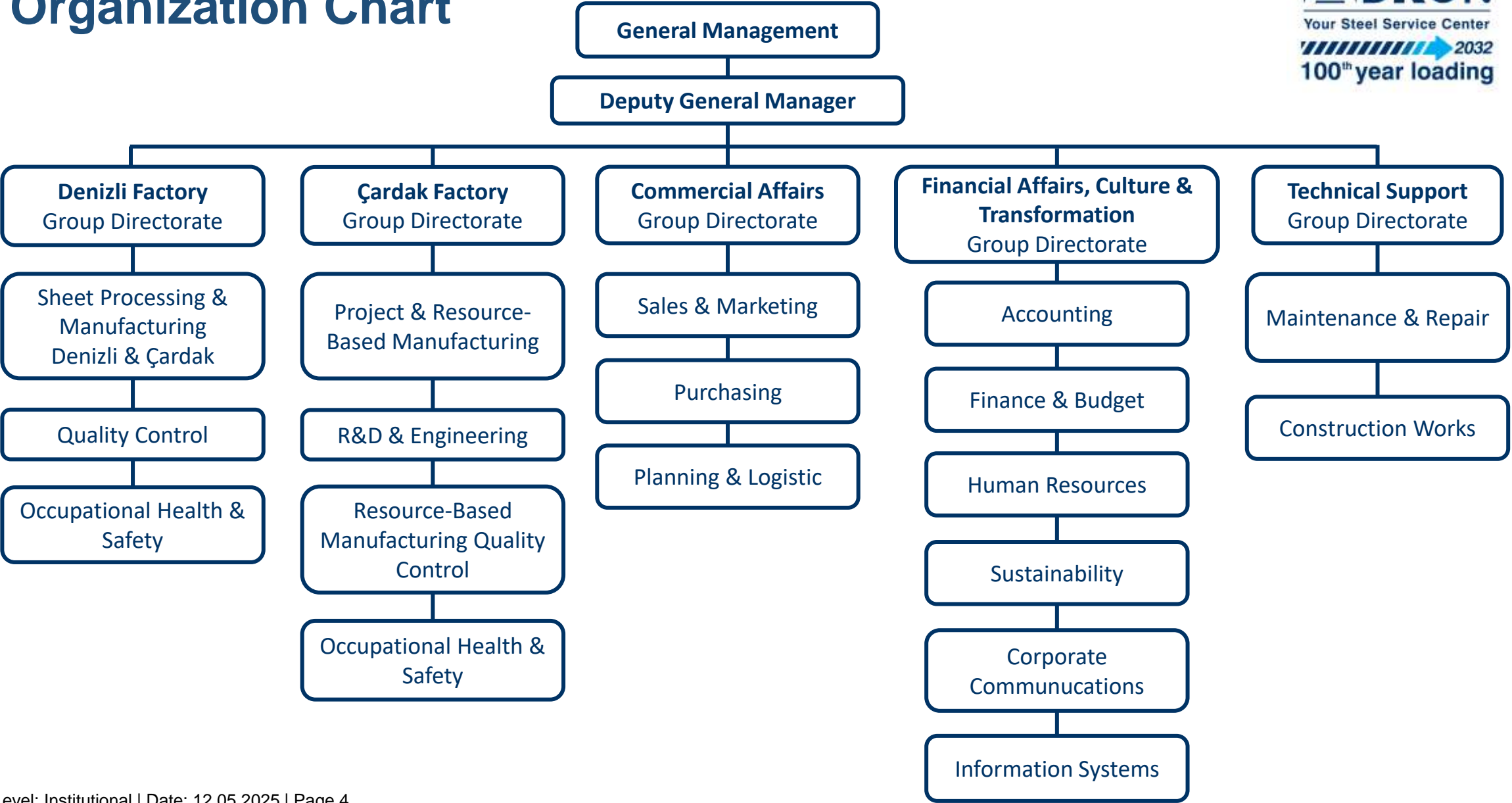
ASKON DESIGN CENTER: Hacıyüplü Neighborhood, Akça Street, No:160, Merkezefendi/Denizli

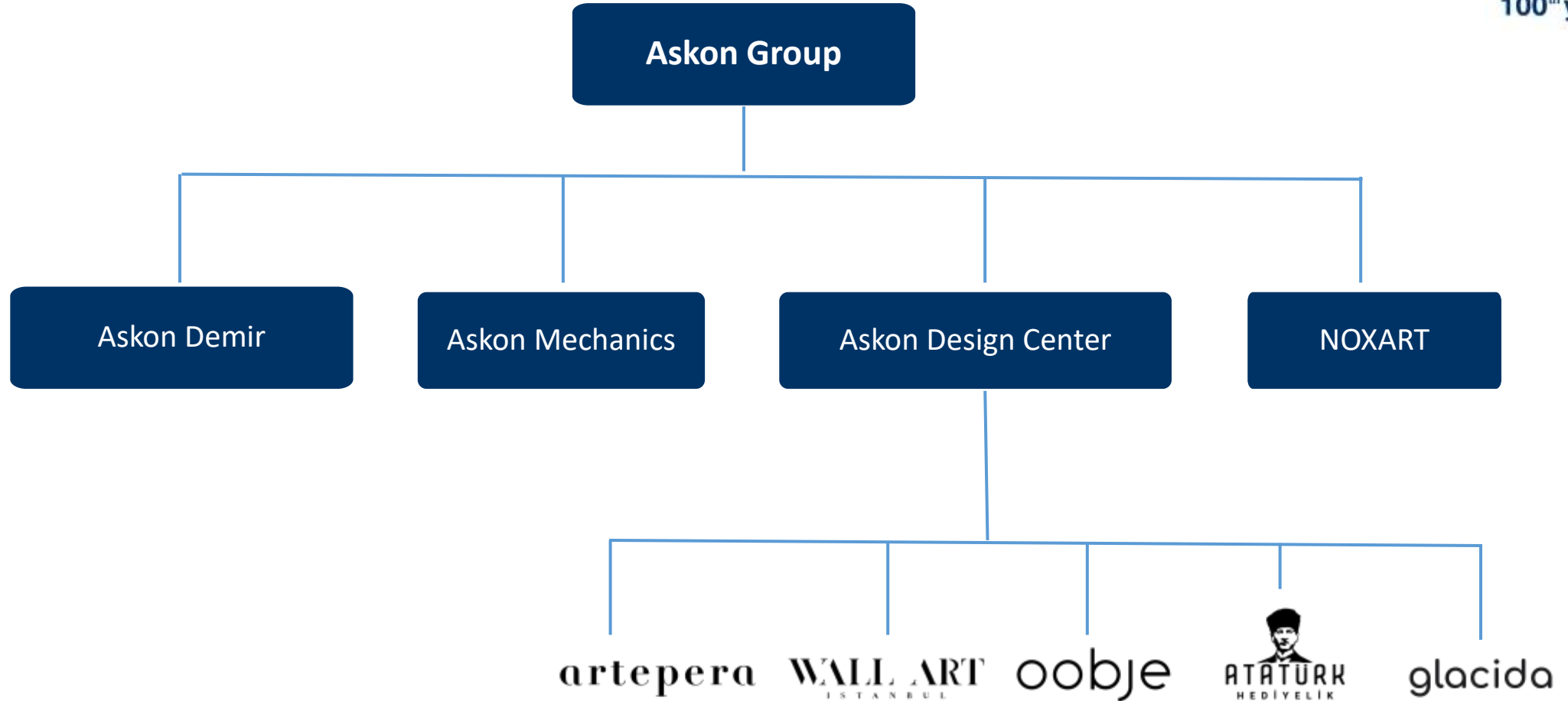


U.S.A.
LLC (NEW JERSEY)

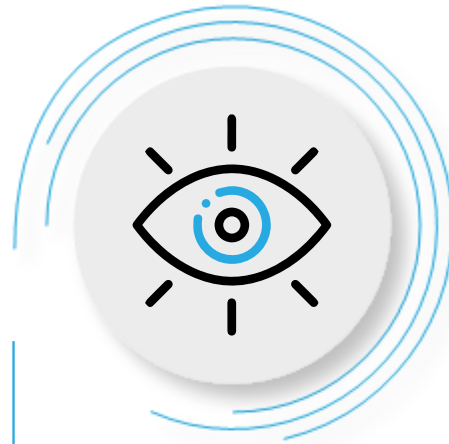
WAREHOUSE
2792 Northwest 24th Street
Miami, Florida 33142-7006 United States

Organization Chart





Our Vision / Mission



VISION

- ✓ To be preferred.
- ✓ To prioritize sustainability
- ✓ To have a corporate approach
- ✓ **To be an employer brand**
- ✓ To be a leader in customer and employee satisfaction



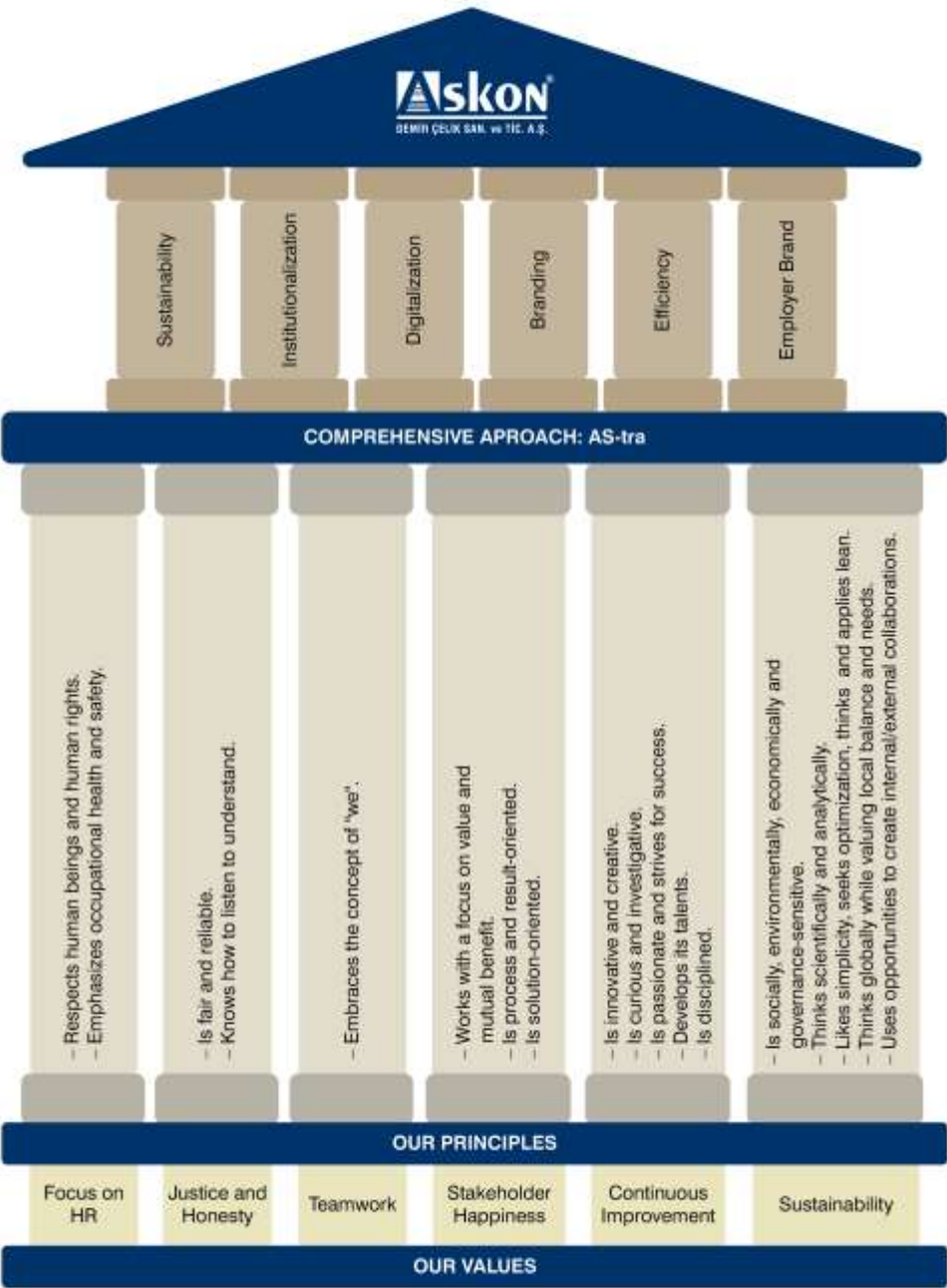
MISSION

- ✓ To collaborate with our business and solution partners
- ✓ To focus on employee rights and happiness
- ✓ To be agile, sustainable, lean and environmentally conscious
- ✓ To create value for our customers
- ✓ **To contribute to the economy of our region and country at the highest level.**

Our Principles and Values

AS-TRA

Askon Sustainability Strategy
Team-Resilience-Agility



Integrated Management System



ISO 9001

Quality Management



ISO 45001

Occupational Health and
Safety Management



ISO 14001

Environmental Management



ISO 10002

Customer Satisfaction Management



EN 15085-2

Qualification for Railway
Vehicle Manufacturing



TS EN ISO 3834-2

Source-based Manufacturing
Qualification



EN 1090-1, EN 1090-2, and EN 1090-1-T

Our Manufacturing Competence with the Certificates
Compliance with European Standards in Structural Components



Basic Figures

(2024)



Revenue

€ 52,3 M



Human Resources

420



Investments

€ 25 M



Export

€ 6,4 M

Askon's Performance in Numbers

(2023)

Five
different
locations
including
the USA

More than 521
personnel
employment

Çardak factory
15,950 m²
indoor space

%14
Female
Employment rate

Number of
Customers
(Conventional)
2,409

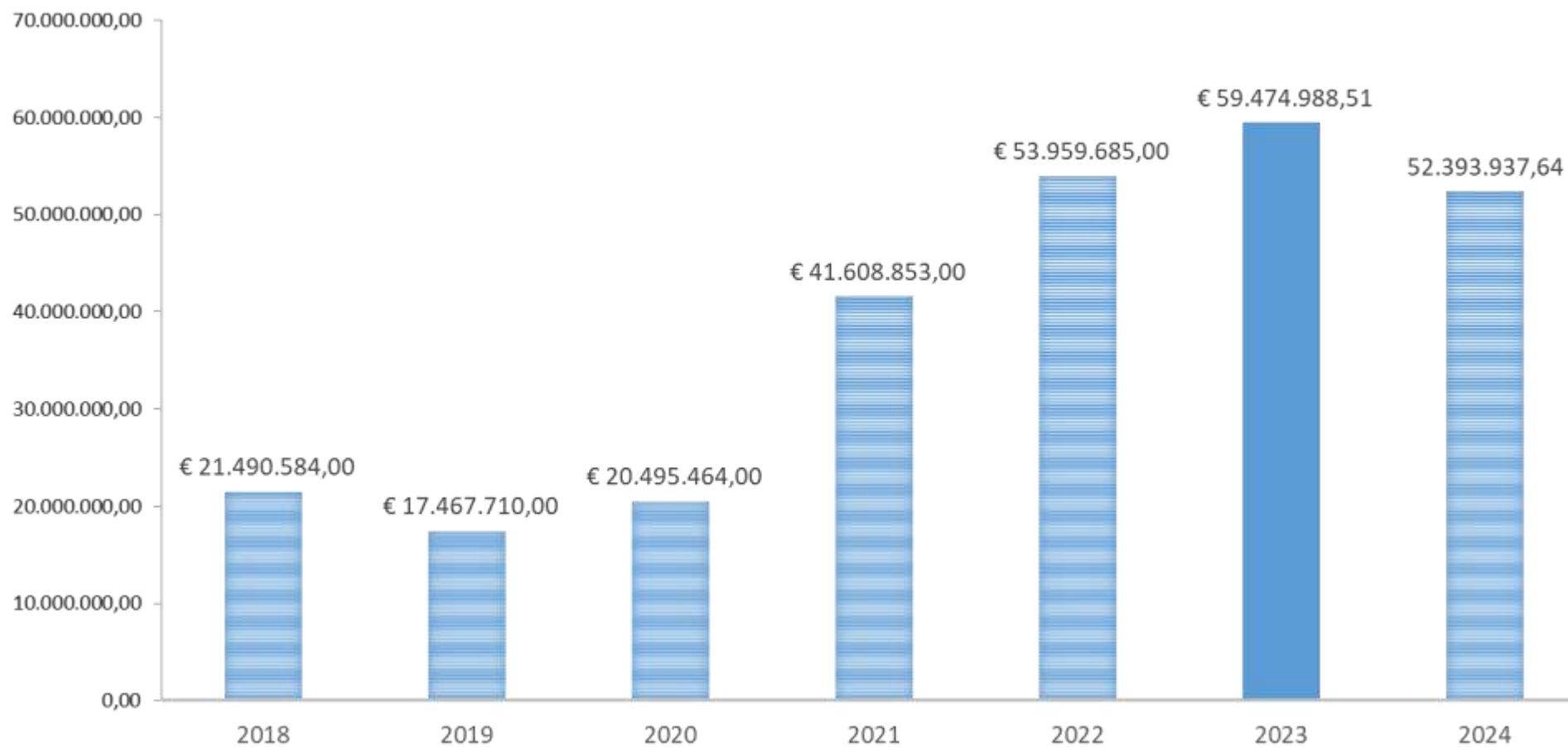
Number of
Customers
(E-Commerce)
B2C: **70,000**
B2B: **200**

Number of Countries
Exported to
E-Commerce: **69**
Conventional: **32**

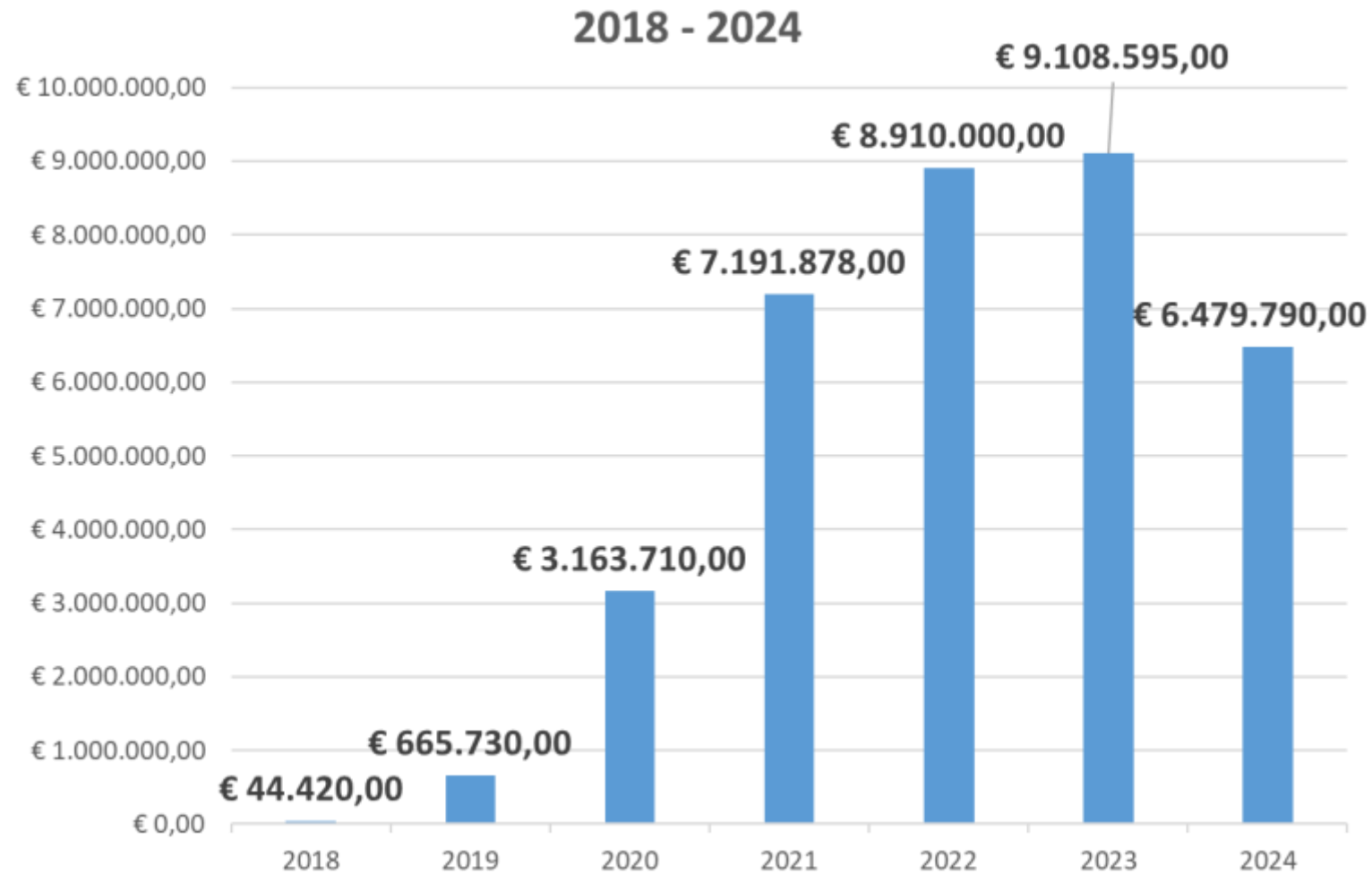
Export Rate
14.52%

Revenue

2018 - 2024



Export Figures



Industries We Serve

Machine Manufacturers

[Textile Machinery Manufacturers](#)
[Marble Processing Machine Manufacturers](#)
[Sandblasting Machine Manufacturers](#)
[Agricultural Machinery Manufacturers](#)
[Recycling Machine Manufacturers](#)
[Cable Machine Manufacturers](#)
[Industrial Fan Manufacturers](#)
[Tunnel Boring Machine Manufacturers](#)
[Rolling Mill Machine Manufacturers](#)
[Woodworking Machinery Manufacturers](#)
[Elevator Manufacturers](#)
[Press Brake Manufacturers](#)
[Concrete Batching Plant Manufacturers](#)
[Crushing and Screening Machine Manufacturers](#)
[Mining Machinery Manufacturers](#)
[Briquette Machine Manufacturers](#)
[Asphalt Plant Manufacturers](#)

Production Facilities

[Conveyor Belt Manufacturers](#)
[Marble Quarries](#)
[Mining Mines](#)
[Cement Manufacturers](#)
[Steel Production Facilities](#)
[Woodworking Facilities](#)
[Concrete Production Facilities](#)
[Project Companies](#)
[Asphalt Production Facilities](#)
[Briquette Production Facilities](#)

Underground and Surface Equipment

[Port Operators](#)
[Aviation and Ground Support Equipment Manufacturers](#)
[Railway Equipment Manufacturers](#)
[Railway Vehicle Manufacturers](#)

Vehicle-Mounted Equipment and Automotive

[Attachment Manufacturers](#)
[Construction Equipment Repairers](#)
[Crane Manufacturers](#)
[Construction Equipment Manufacturers](#)
[Trailer and Tipper Manufacturers](#)
[Truck Trailer Manufacturers](#)
[Concrete Pump Manufacturers](#)
[Cabin Manufacturers](#)
[Automotive Manufacturers and Suppliers](#)

Askon Çardak Factory Construction Site

Investment Cost: 20.000.000 €

Total Area: 85.000 m²

Closed Area: 15.000 m²

Rainwater Storage Area: 400 m³

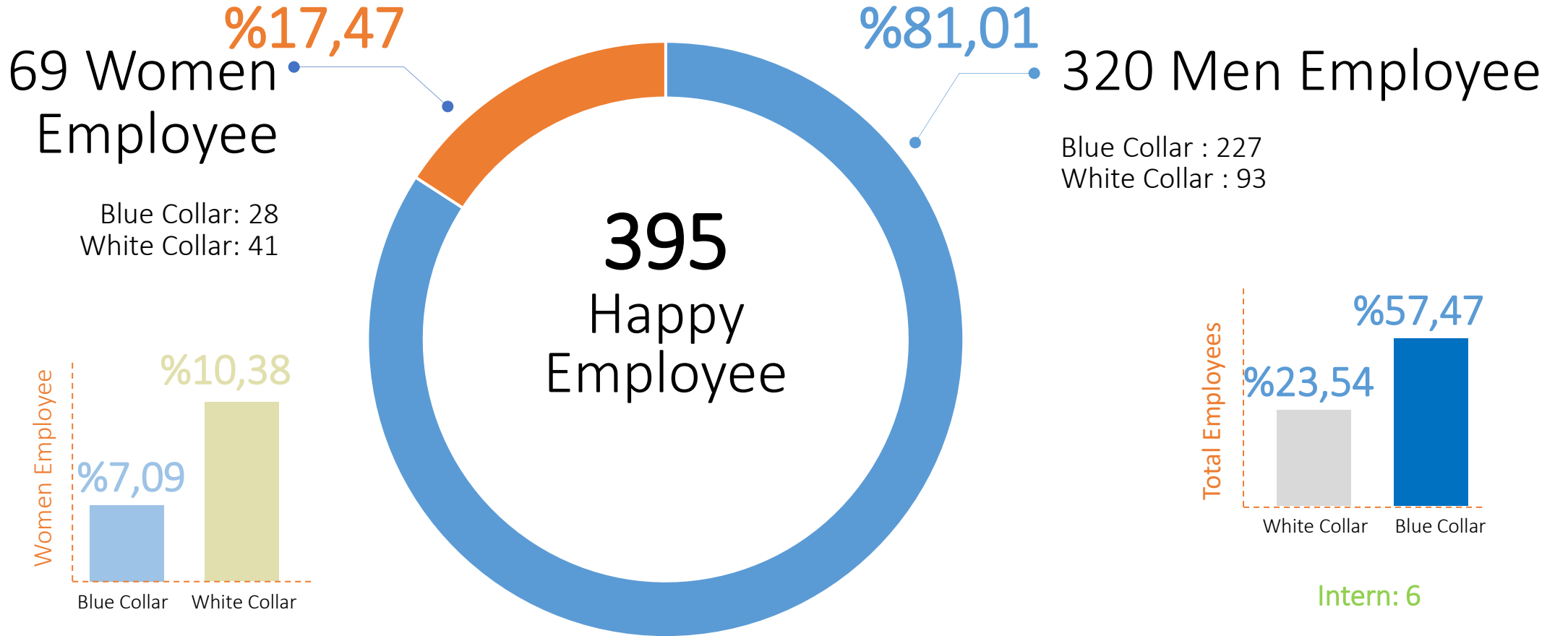
Purified Water Storage Area: 600 m³

Solar Energy System: 1.6 MW





Human Resource



Cooperation

University - Industry Cooperation

- Kırşehir Ahi Evran University Metal-Plant-Flower Work Project
- Ege University Faculty of Fine Arts, Design and Architecture, Corporate Identity Design Improvement Project
- Ege University Faculty of Fine Arts, Design and Architecture, Visual Communication Design Development Project
- Pamukkale University Computer Engineering; Artificial Intelligence, Machine Learning, and Image Processing Collaboration
- Pamukkale University Industrial Engineering Department, Lean Production Processes
- Pamukkale University Industrial Engineering Society, Digital Transformation Management
- Hazar Rocket Team Sponsorship
- Muğla Sıtkı Koçman University MSKU, Metallurgy and Materials Society (MMT) Speech Event
- Muğla Sıtkı Koçman University Career Days
- Pamukkale University Labor Economics and Industrial Relations Career Introduction Days
- Ege University Career Days
- Sarayköy Caber Uyanık Kindergarten Decoration Renewal Support with Kahev
- Ege University Faculty of Communication Corporate Communication Strategy and Corporate Identity Guide Collaboration
- Pamukkale University Vocational School with R&D Projects Consulting Process

Civil Society Organization

- Mother-Child Education Foundation (AÇEV) Architect / Artepera Collaboration
- Women Doctors Education Support Foundation (KAHEV) / Artepera Collaboration
- Artepera - DAC SPACE Collaboration
- Quality Association (KalDer) Quality Europe Foundation (EFQM) Excellence Model
- Soroptimist and Gesifed Film Gala Night collaboration, sponsored by the director Jale İncekol for the premiere of *Narperi'nin Bileziği* (Narperi's Bracelet)
- Kahev and Sarayköy Caber Uyanık Kindergarten Decoration Renovation Support
- World Cleanup Day



Social Life in Askon



EFQM National Quality Movement

KalDer Membership - 2020

Inception of the National Quality Movement - 2020

Ege Region Excellence Award process 2023 – 2024

TAİDER Membership- 2023



Republic of Turkey Ministry of Industry and Technology - Clustering

Production Technologies Center-Advanced Materials and
Advanced Manufacturing Technologies Cluster, coordinated by
the Presidency of Defense Industries



Our Strategic Cooperatings



Thyssenkrupp - 2013



NLMK - 2023



SALZGITTER - 2023

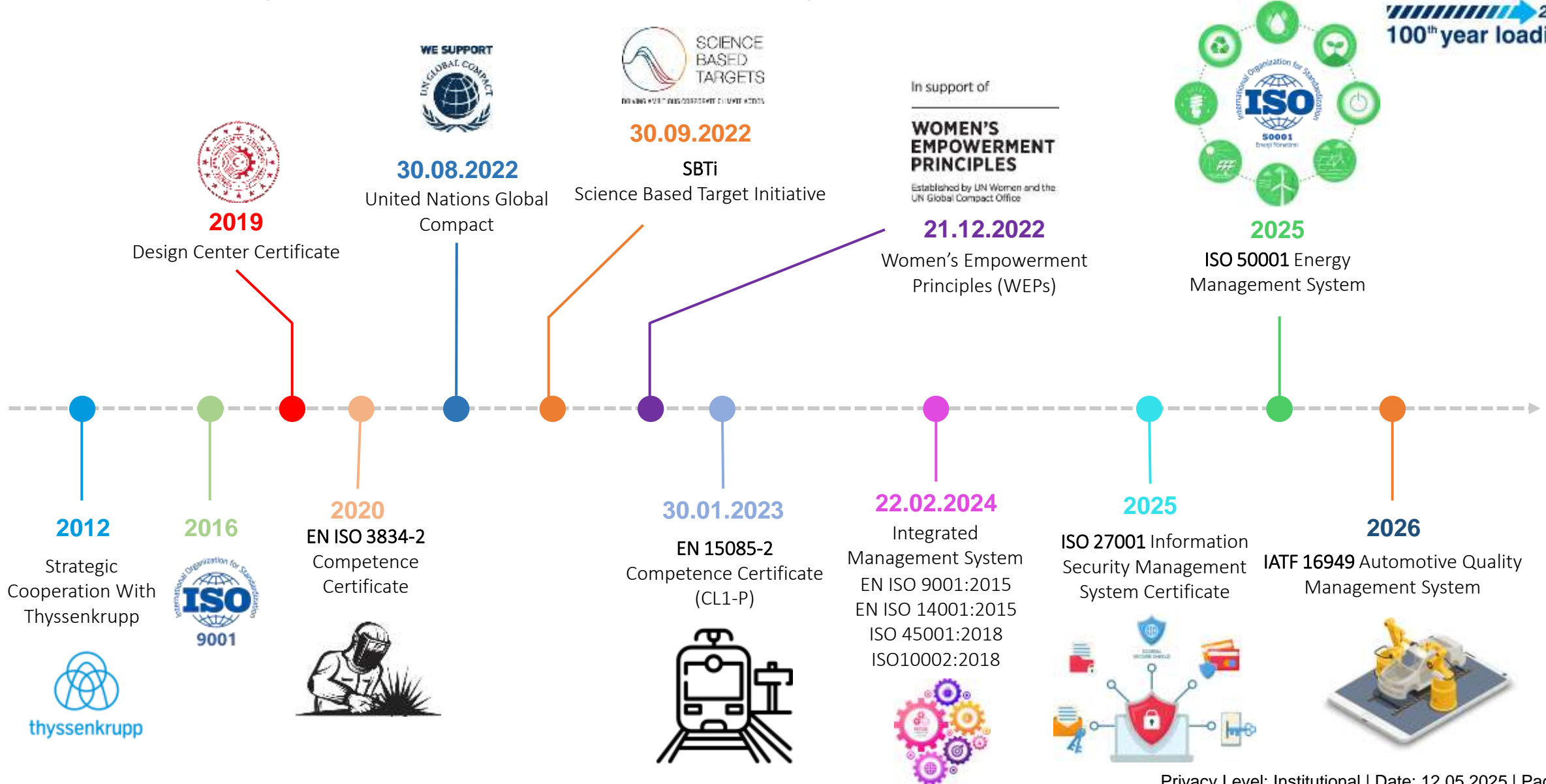


Askon Academy

- *Leadership Development Program
- *Talent Development Program
- *Orientation & Refreshing & Advanced Training Programs
- *Online & Class & On Site Courses



Our Journey Towards Sustainability



SBTi-Science Based Target Initiative

30.09.2022

Target:

- Reduce Scope-1 and Scope-2 greenhouse gas (GHG) emissions by **42% by 2030 compared to the base year 2021**
- Measure and reduce Scope-3 emissions



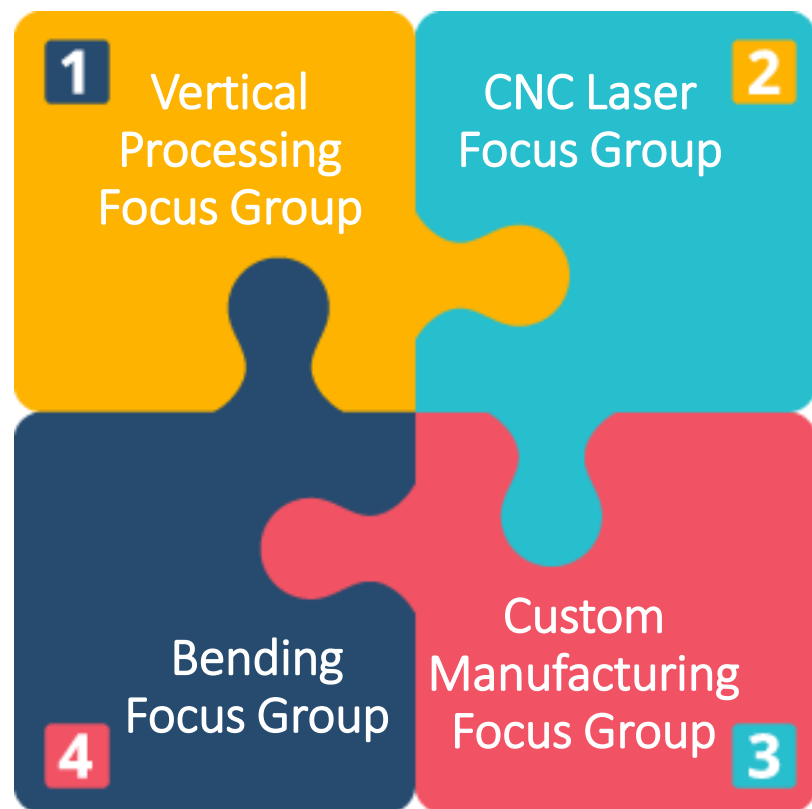
Social Compliance Policy

Release Date 01.10.2019

1. Fair Wage
2. Occupational Health and Safety
3. Preventing Debts from Paying by Labor
4. Prevention of Bribery and Corruption Ethical Business Conduct
5. No Discrimination
6. Working Hours
7. Prevention of Child-Youth Labor
8. Preventing Precarious Work
9. Protection of the Environment
10. Supplier Management



Continuous Improvement / OPEX Focus Workgroups



Askon Academy

VMS – Value Stream Mapping

Lean Manufacturing (5S)

EFQM and Rewarding



Sustainable Environment

Digitalization

Quality and Efficiency at The Source

Services



Post-Cutting
Services



CNC Cutting



CNC Twisting



Straightening



Machining



Quality Control



Logistics



CNC Boru
Profil Kesim



Welded
Manufacturing



Sandblasting
Painting

CNC Laser Cutting

- 12KW LVD PHOENIX FIBER LASER 1500X3000
- 10KW LVD PHOENIX FIBER LASER 1500X3000
- 12 KW NUKON VENTO FIBER LASER 1500X3000
- 12 KW NUKON VENTO FIBER LASER 2000X6000
- 6KW NUKON VENTO FIBER LASER 2000X6000
- 4KW NUKON VENTO FIBER LASER 1500X3000
- 12KW NUKON VENTO FIBER LASER 1500X3000
- 8KW NUKON 18MT BEVEL FIBER LASER 2500X18000
- 4KW NUKON REX FIBER LASER 1500X3000
- 2KW BODOR FIBER LASER 1500X1000
- 20 KW NUKON NF-251250 FIBER LASER 2500X12000
- 12 KW NUKON NF PRO LASER 2000x6000



Nukon NKT-160 4kW

Cutting Capability +/- 45°.

Power 4 kW

Min.-Max. Pipe Dia: Ø15-Ø226mm

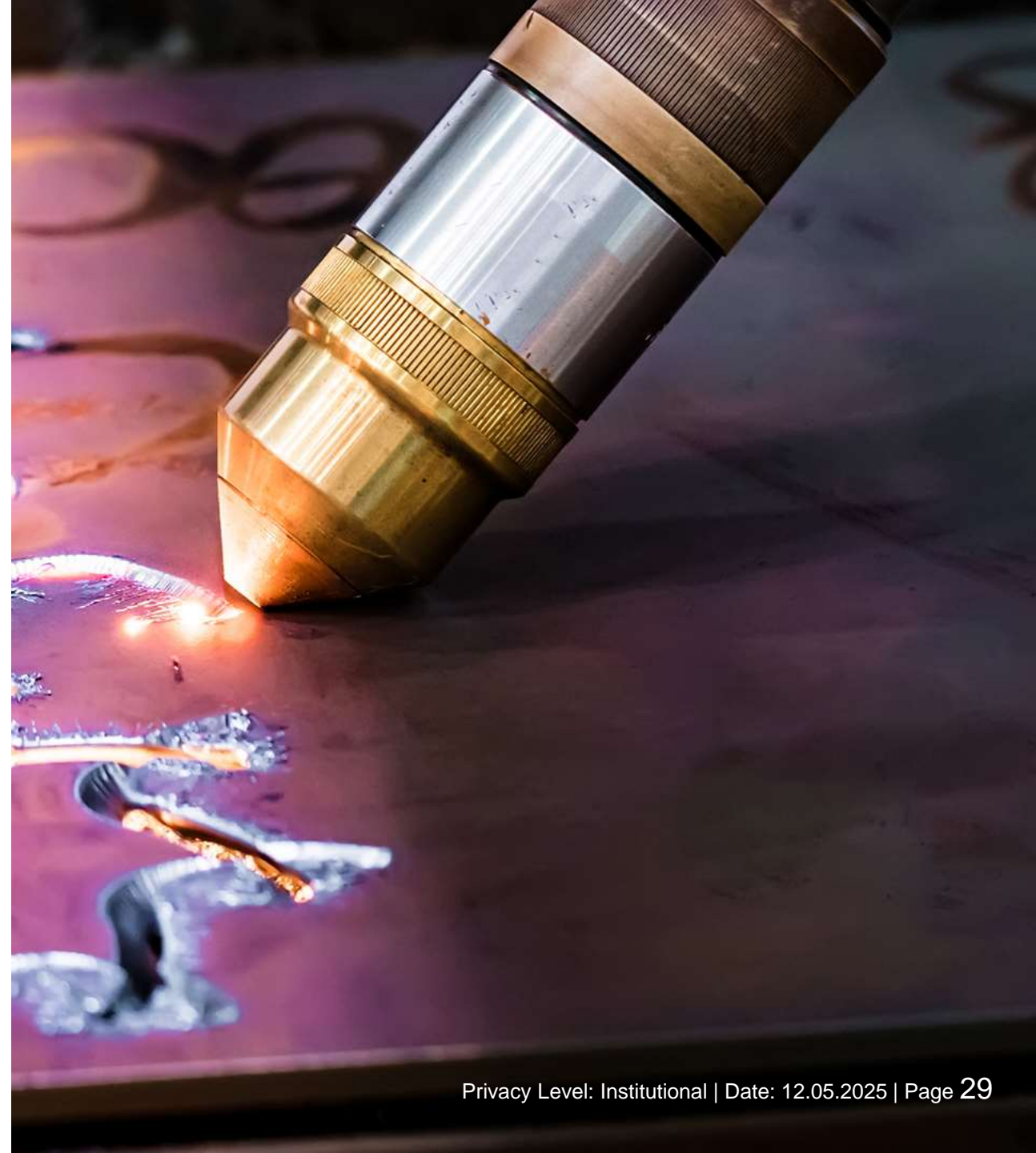
Max. Length: 6500mm



CNC Plasma&Oxy Cutting

- 3MTX12MT AJAN 3 HEAD OXY
- 3MTX25MT AJAN 3 HEAD OXY
- 3MTX25MT AJAN 3 HEAD OXY
- 3MTX25MT AJAN OXY-PLASMA
- 2,5MTX10MT AJAN 2 HEAD OXY
- 2,5MTX12MT AJAN PLASMA
- 5,6MTX33MT AJAN DOUBLE BRIDGE 4 HEAD

Max. cutting thickness Plasma 40mm, OXY 300mm





Surface Machining

- HARTFORD HCMC 2110
- HARTFORD HCMC 1682
- HARTFORD MVP-16 1682
- SPINNER VC 1150
- HARTFORD MVP-11 1100X600
- HARTFORD HEP3150 DOUBLE COLUMN
- HARTFORD HSA-828-EAY DOUBLE COLUMN
- SORALUCE FP 8000 FLOOR TYPE BORING CENTER
- HARTFORD DOUBLE COLUMN 3200x4000

Width: 2500mm
Length: 8000mm



- 2000x8000 TABLE
- 2000x2000 ROTARY TABLE
- 3200mm HEIGHT
- 5-AXIS MACHINING HEAD

Press Bending

- 8MT 1000 TONS DURMA PRESS BRAKE
- 6MT 450 TONS PRESS BRAKE
- 4MT 600 TONS DENER PRESS BRAKE
- 2,5MT 100 TONS ERMAKSAN PRESS BRAKE
- 1,3MT SERVO DENER ABKANT PRESS BRAKE
- 3MT BAYKAL PRESS BRAKE
- 3MT 220 TONS DENER PRESS BRAKE
- 3MT 320 TONS DENER PRESS BRAKE
- 127CM 40 TONS ERMAKSAN PRESS BRAKE
- 1,5MT 40 TONS SERVO DENER PRESS BRAKE
- 3MT 220 TONS DURMA HYBRID PRESS BRAKE
- 4MT 220 TONS LVD TOOLCELL PRESS BRAKE
- 1,5 MT 250 TONS TESLABEND PRESS BRAKE

Guillotine

- 10MM X 3000 BAYKAL GUILLOTINE SHEARS
- 10MM X 6000 BAYKAL GUILLOTINE SHEARS



LVD Toolcell Press Bending

Length:4000mm

Ton:220 ton

Easy-Form



Roll Bending

- 4 ROLL / L = 3000mm
- 4 ROLL / L = 1500mm
- 4 ROLL / L = 2000mm
- 3 ROLL / L = 2000mm

Tube Bending Machine

Max. Tube Outside Diameter: Ø38 mm
Max. Wall Thickness: 3 mm
Max. Bending Radius: 150 mm



Deburring&Edge Rounding

- 0,80mm - 80mm thickness
- 1300mm width
- 250 kg max. weight
- 120mm max. thickness
- 1300mm width
- 600 kg max. weight



Flattening&De-Stressing

- 0.60mm - 15mm thickness
- 1650mm max.width
- 100mm min.width
- 3mm - 40mm thickness
- 2000mm max.width
- 100mm min.width



Welded Manufacturing

CLOOS ROBOT WELDING

- 600Amp Max Power
- 7-Axis Robot Arm
- Two Positioners
- 11-Axis Welding Capacity

CLOOS COBOT

- 6-Axis
- 10 kg Payload Capacity
- Reach 1300 mm
- Weight 33 kg

CLOOS SLIDING ROBOT WELDING

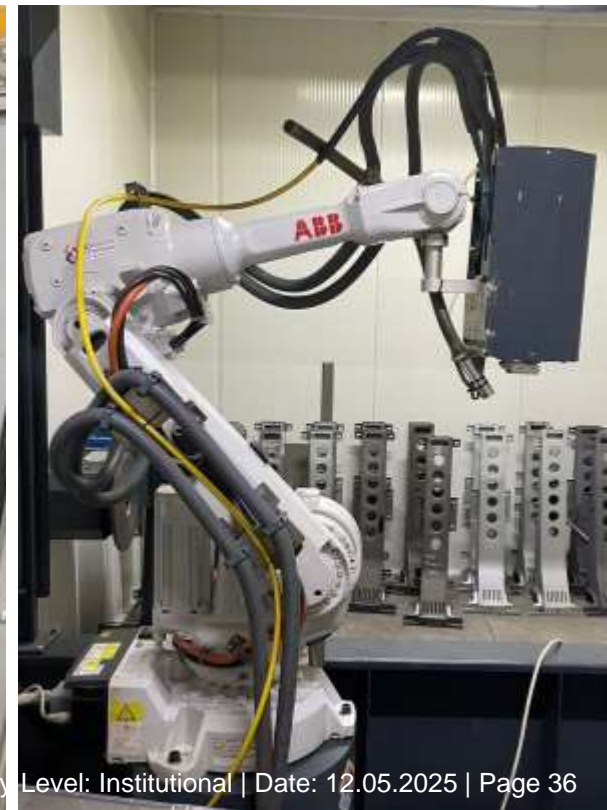
- 600Amp Max Power
- 10 m Positioner Length
- 2.8 m Positioner Rotation
- 11-Axis Welding Capacity

ASKON BKM 6000 BOOM WELDING MACHINE

- 600Amp Max Power
- Installed Capacity 2.7kW
- 3500x14,000x2150 mm
- Industry 4.0 Compatible

Robotic Laser Welding Automation System

- 4 kW
- 6-Axis Robot Arm



Sandblasting

- Continuous System
3100x1500, 16 Turbine
- * Min. Sheet Thickness 5mm
- Manuel Sandlastig

Painting

- 4000mm Height
- 7000mm Width
- 12000mm Length
- Drying

Box Paint & Dry Furnace

- 3000mm Height
- 4000mm Width
- 8000mm Length

Powder Coating System

- 1600mm Height
- 300mm Width
- 2000mm Length
- Line length 115m with washing system



Powder Coating System

- Fully Automatic
- 122m Conveyor System
- Operating Speed Range: 0.7m/min to 2.21m/min
- 1340 Units/Day Product Painting
- Pre-Painting Nano Coating
- Ability to Paint Products with Maximum Dimensions of 34cmX200cmX158cm
- 4-Stage Tunnel Washing System
- Antistatic Composite Smart Paint Booth



Other Supporting Services

PROFILE CUTTING+DRILLING+MARKING LINE

- 15000mm Inlet+Outlet
- 120mm - 800 Profile Processing
- 3 Axis Hole Drilling (Simultaneous)
- Marking
- 45 Saw Cutting

POINT PULSE MARKING

- 100mm x 40mm Area Marking

CHAMFERING MACHINE

- 15 x 15 45 Chamber Opening (Hand Type)

WELDING TABLE (Siegmund)

- 2000 X 4000 8 Piece
- 1000 X 2000 18 Piece
- 2000 X 2000 1 Piece
- 3000 X 1500 1 Piece
- 2400 X 1200 3 Piece



Quality Control

EQUIPMENT LIST

- * Angle Protractor (Mechanical/Digital)
- * Block Gauge (Johnson Gauge)
- * Paint Foil Set
- * Welding Caliper
- * Cross Cut Adhesion Tester
- * Steel Ruler
- * Comparator
- * Depth Caliper
- * Digital Inclinator
- * Caliper
- * Square
- * Ring Gauge - Go/No-Go
- * Precision Spirit Level
- * Manometer
- * Micrometer
- * MT Device (Magnetic Particle Testing Device)
- * Radius Gauge
- * Surface Roughness Tester
- * Feeler Gauge
- * Hardness Tester
- * Color Measurement Device
- * Tape Measure
- * Portable CMM (Hexagon Absolute Arm)
- * Thread Gauge - Go/No-Go
- * Universal Protractor
- * Wet Film Comb
- * Planar 2D Scanner (Two-Dimensional Scanner)
- * Non-Destructive Testing



Logistic & Packaging

Logistic Standards

- * 7/24 Service
- * Rail, Air and Sea options to delivery
- * Packaging

Packaging Standards

- Composite Strapping
- Wooden Pallet - ICPM 15 (Euro)
- Mattress
- Packing Nylon
- Collar Pallet
- Cardboard Box



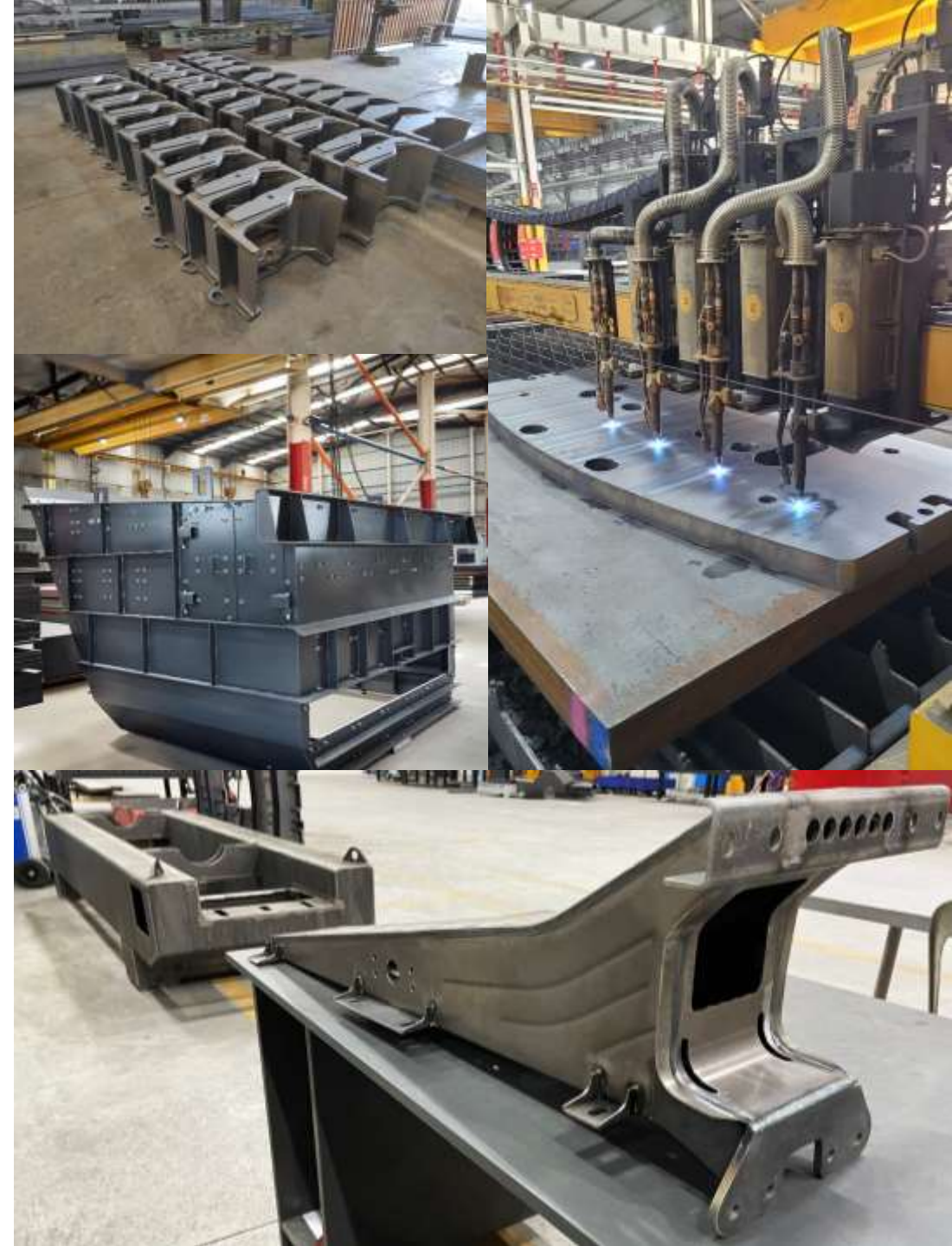
Stock

- * Wide Product Range
- * Product Continuity
- * Strong Stock

Wear Plate - X120Mn12 - High Strength Steels
Cor-Ten – Creusabro - S235 - S355 - Aluminium –
Cold Rolled Sheet - HRP - Galvanized - Stainless Steel –
IPE – NPU – NPI - HEA - HEB - HEM - Angle Irons –
Square Sheet



Production Samples

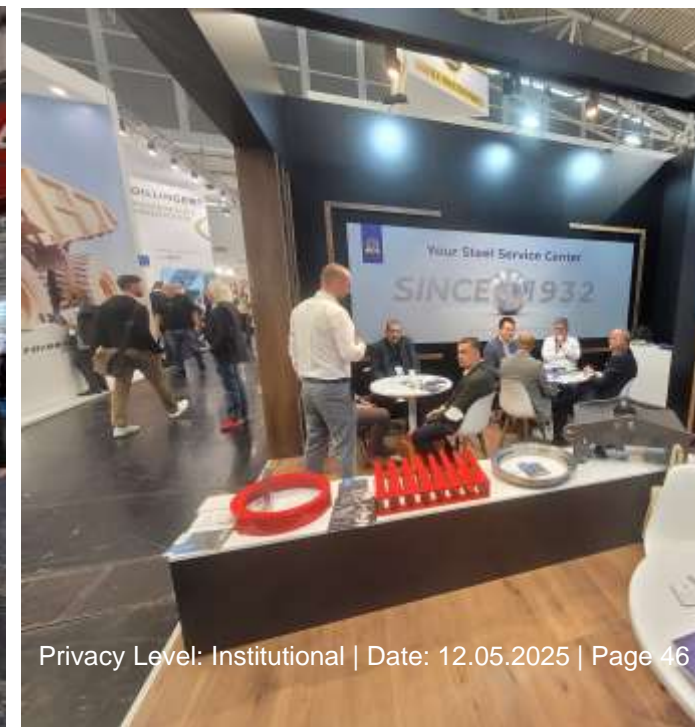






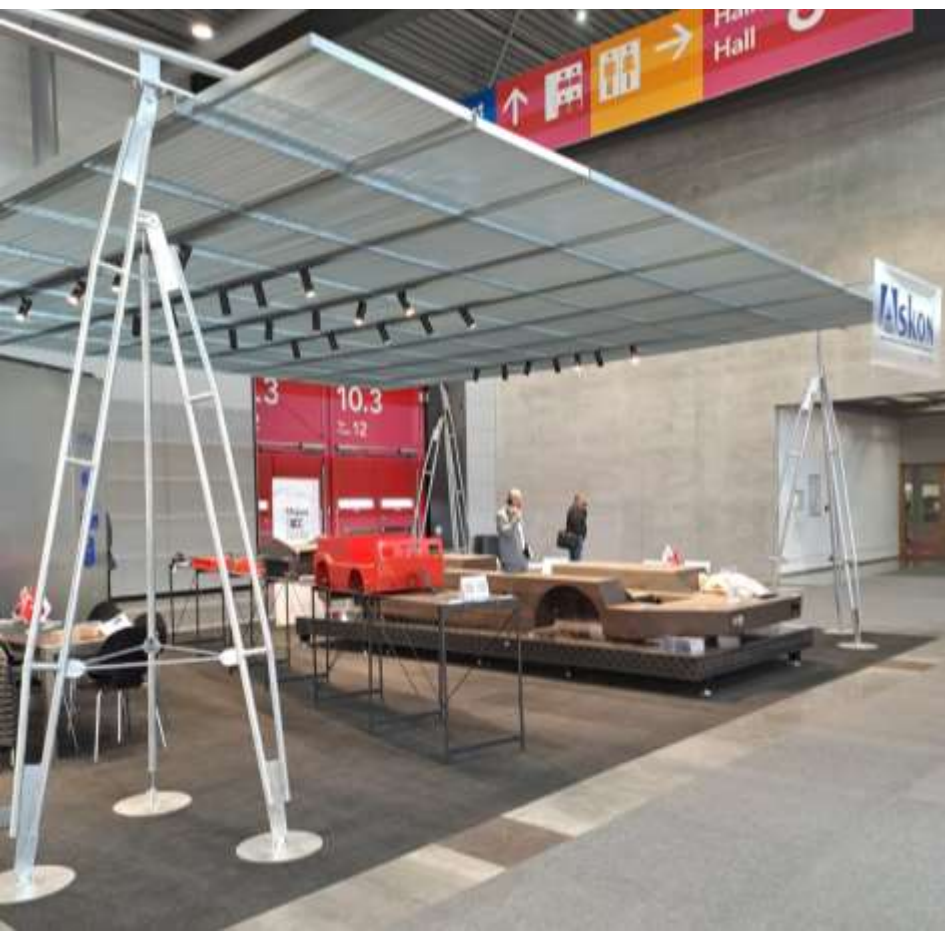


BAUMA





We are at the
16th Blechexpo 2023
7-10 November 2023
Messe Stuttgart, Germany
Hall 10 - Stand 10701







EuroBLECH

Affiliates

artepera

artepera.com

WALL ART
I S T A N B U L

wallartistanbul.com

oobje

oobje.com

ATATÜRK
HEDİYELİK

ataturkhediyelik.com

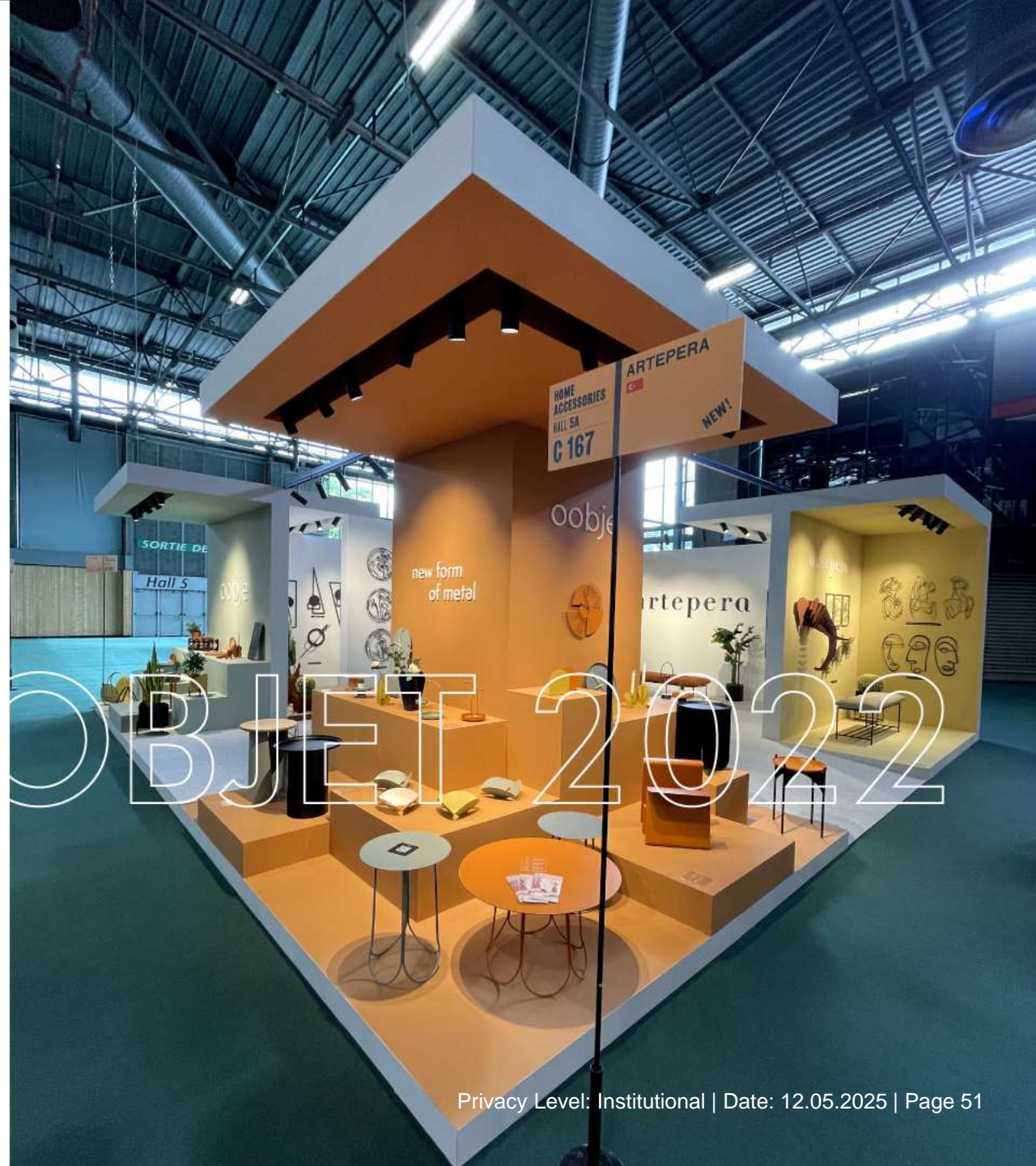
NOXART

noxart.com

glacida

glacida.com.tr





MAISON OBJET





INDEX SAUDI ARABI

(*) 32 countries via Steel Service Center +65 countries via our affiliates (B2C,B2B)







www.askondemir.com

Contact Us

info@askondemir.com
pazarlama@askondemir.com
export@askondemir.com

