

Sustainable and Connected Mobility (Connect Georgia)



Implemented by



In Cooperation with



Project Outline

Political Partner

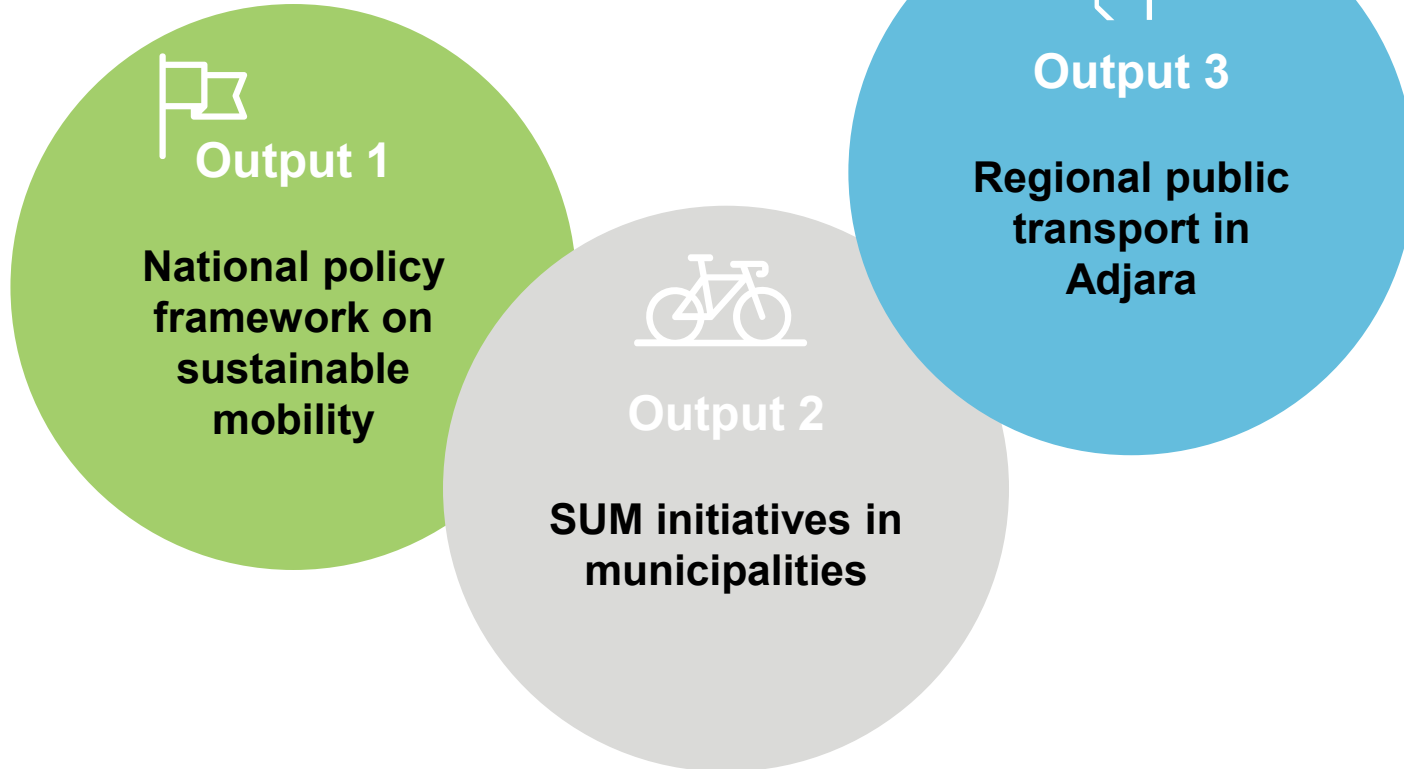
Ministry of Economy and Sustainable Development of Georgia (MoESD)

Duration

Oct 2023 – July 2026 (July 2027)

Reforming sustainable mobility at **national**,
regional, and **municipal** levels in Georgia

Overview of Outputs



Output 1. National Policy Framework

National Framework on Sustainable Urban Mobility

Model Institutional Framework for Georgian Municipalities for SUM



Civil Society- lead Vision Setting (NUMP)

Technical support on national level topics

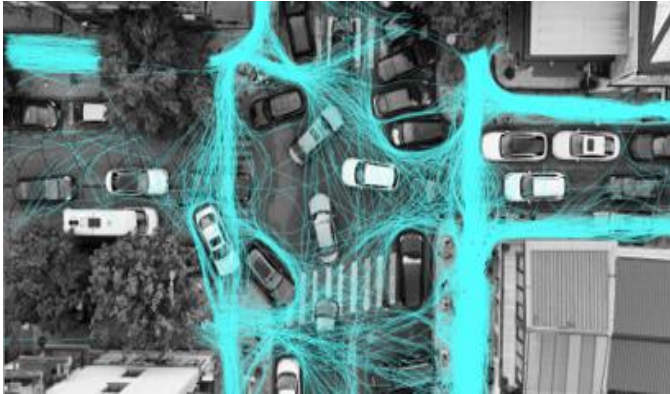
RS: Speed Limit Management

Intercity Passenger Transport Reform

Output 2. SUM in Batumi

Street redesign with community engagement

- designing/implementing the reclaimed space with children/local population
- lectures and awareness raising events in the space
- pop-up space assessment & community engagement guideline for BCH



Junction design using AI traffic analysis tools improving road safety

Developing **design guidelines** for inclusive and gender responsive public transport stops → in cooperation with PWD's and Gender NGO



Output 3. Adjara Transport Alliance

- **New integrated network:**
 - ✓ First time in Georgia: ridership data and questionnaires on whole network (up to 1500 questionnaires)
 - ✓ Model created
 - ✓ Future network developed
- **Financial and institutional models** – in progress
- **Implementation plan**
- **Community engagement:**
 - Reaching to the remote villages (50 from 150 total)
- **Private sector and just transition:**
 - Field work to reach small/remote service providers
 - Bringing all sectors and municipalities together for the first time
 - Defining the vision and challenges
 - Informing private sector



Need for SUMP

*“A **Sustainable Urban Mobility Plan** is a strategic plan designed to satisfy the mobility needs of people and businesses in cities and their surroundings for a better quality of life. It builds on existing planning practices and takes due consideration of integration, participation, and evaluation principles”.*

Sustainable **Comprehensive** **Vision** **Transformative**
Ownership **Contextualized** **Measurable**

- 1 Plan for sustainable mobility in the “functional urban area”
- 2 Cooperate across institutional boundaries
- 3 Involve citizens and stakeholders
- 4 Assess current and future performance
- 5 Define a long-term vision and a clear implementation plan
- 6 Develop all transport modes in an integrated manner
- 7 Arrange for monitoring and evaluation
- 8 Assure quality