

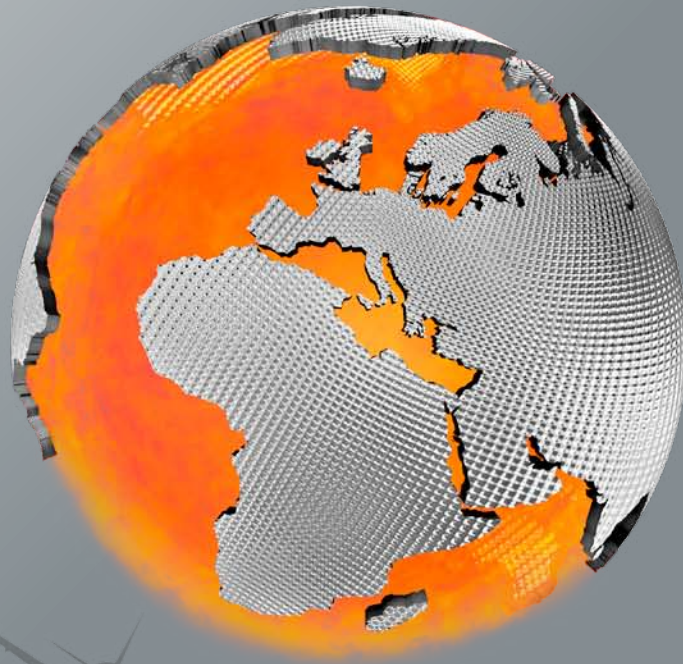


ISOLITE
High Temperature Solutions

Industry

Automotive

Aviation



Managing energy.

ISOLITE GmbH – Pioneering high-temperature insulation technology.

Temperatures between 400 °C and 1,600 °C occur naturally deep inside the Earth and are part and parcel of our everyday business. Our task is to trap heat where it is needed and keep it at bay where it can cause damage.

From our perspective, the continuous further development of our products is just as important as their quality and adaptability. Our determination to contribute to the responsible use of resources by conserving energy and reducing emissions inspires us to give of our best every day.

We use our modular toolkit to develop the best possible solution for every customer and application, and seek to reinforce our customers' own strengths by exploiting the technological superiority of the ISOLITE products.

Our motivated, flexible team, a lean organisation and harmonised processes enable us to offer both prototype and series production at attractive prices.

Managing energy, with ISOLITE.



ISOLITE operates a reliable quality management system to EN9100:2009 standard for the development, manufacture and sale of high-temperature insulation and sealing systems.

As a global supplier to the aviation sector, we understand the high quality and safety aspirations of our customers. Our knowledge is reflected in the awards and certificates we have received from customers during our many years of successful collaboration.

Ready for take off, with ISOLITE.

Striving for excellence.



ISOLITE products are used throughout the aviation industry. They help to curtail energy consumption, enhance performance and reduce emissions – in the interests of man and the environment.

ISOLITE-Blanket

Specification

Position:	External
Design:	Multi-component, sandwiched insulating body
Lining:	Metallic and non-metallic
Insulating body:	Silicate fibre, mouldings, microporous material

Requirements

Ease of installation:	Multi-component design and locking system facilitate dismantling and reinstallation
Perfect fit:	Manual fine adjustment of individual parts
Freedom of movement:	Insulates without impeding movement

ISOLITE-Superinsulation

Specification

Position:	Internal
Design:	Sandwiched insulating body
Lining:	Metallic
Insulating body:	Silicate fibre, glass fabric, mouldings

Requirements

Ease of installation:	Very precise, perfect fit/ dimensional stability
Sealing function:	Expansion of the insulating body
Alternating compressive load resistance:	Special pressure compensation system
Hot gas corrosion resistance:	Specific metal alloy

ISOLITE-Integralliner

Specification

Position:	External
Design:	Integrated: insulating body enclosed between lining and component
Lining:	Metallic and non-metallic
Insulating body:	Silicate fibre, mouldings, microporous material

Requirements

Homogeneous insulation:	Seamless insulation, no thermal bridging
Small installed dimensions:	Developed and designed to comply with space restrictions
Ease of maintenance:	Integral design reduces number of parts

ISOLITE-Firewall

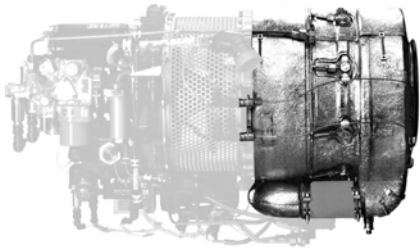
Specification

Position:	External
Design:	Fireproof bulkhead
Lining:	Metallic
Insulating body:	Silicate fibre, microporous

Requirements

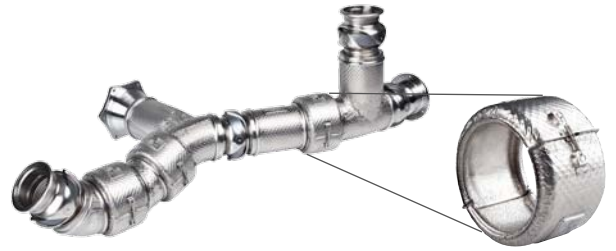
Refractory quality (> 1,100 °C):	Qualified pursuant to ISO 2685
Functional reliability:	Lap joint for homogeneous insulation
Vibration resistance:	Chambered insulating body

Some of our systems and applications:



(1) ISOLITE-Blanket
APU

> Removeable thermal blanket



(5) ISOLITE-Integralliner and ISOLITE-Blanket
ECS/Bleed Air System

> Heat protection



(2) ISOLITE-Superinsulation
Low Pressure Turbine

> Thermal insulation and sealing system



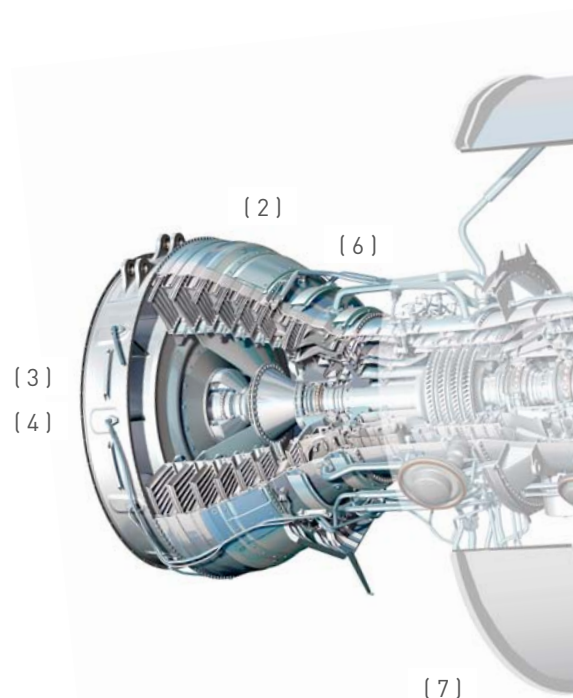
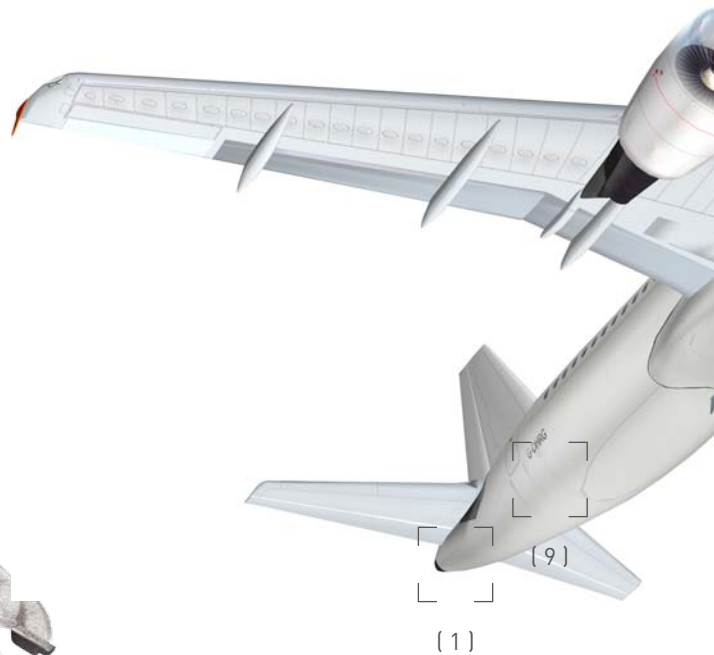
(3) ISOLITE-Blanket
Bearing Case

> Heat protection

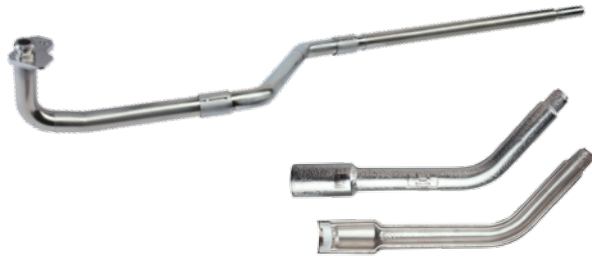
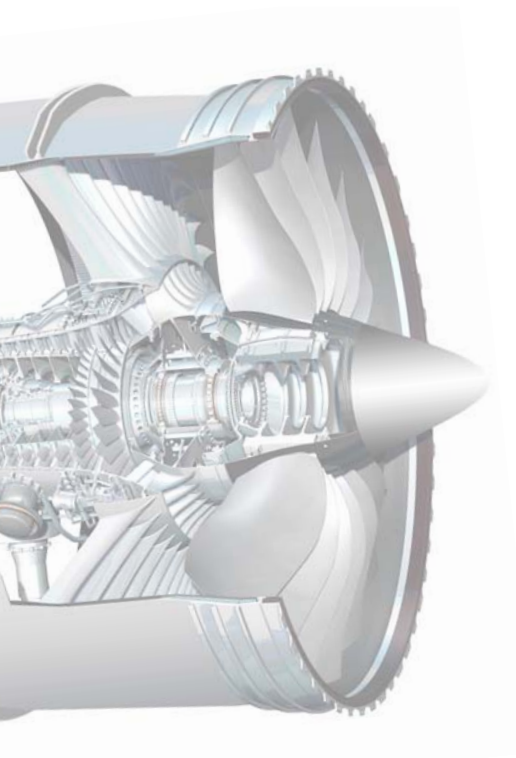
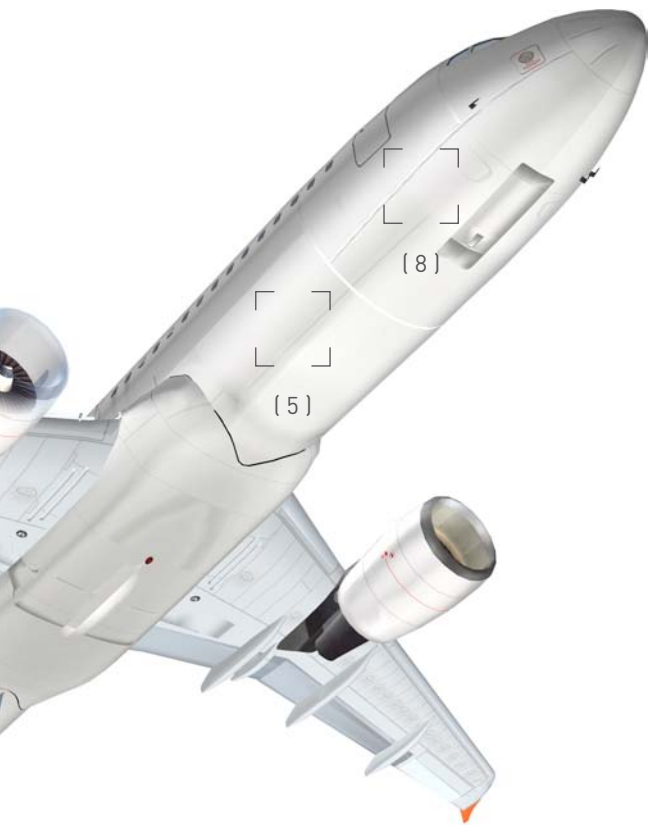


(4) ISOLITE-Blanket
Thrust Reverser Actuator

> Heat protection



(7)



(6) ISOLITE-Integralliner and ISOLITE-Blanket
Oil Tubes

> Heat protection to prevent oil coking



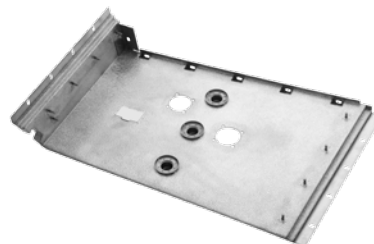
(7) ISOLITE-Blanket
Control Units

> Heat shield to maintain functionality



(8) ISOLITE-Blanket (non-metallic)
FADEC Box and Hydraulic Main Gear Control Valve

> Heat protection to guarantee functionality and safety



(9) ISOLITE-Firewall
APU Compartment

> Fire prevention and protection of structures against thermal radiation



ISOLITE
High Temperature Solutions

ISOLITE GmbH

Industriestrasse 125
67063 Ludwigshafen
Germany

Phone: +49 621 91109-444

Fax: +49 621 91109-499

E-mail: info@isolite.de

www.isolite.de