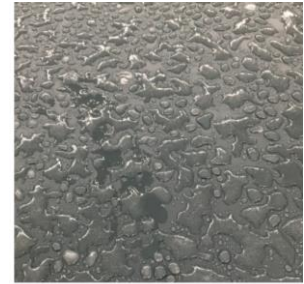
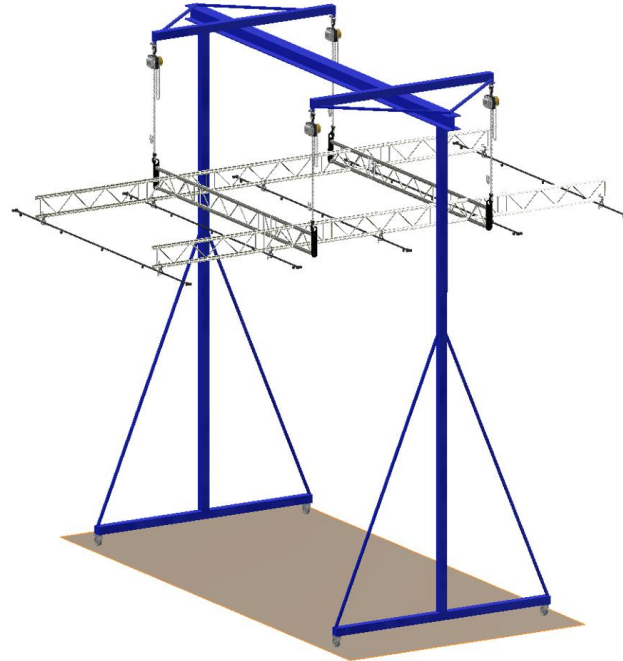


Ice spray test array

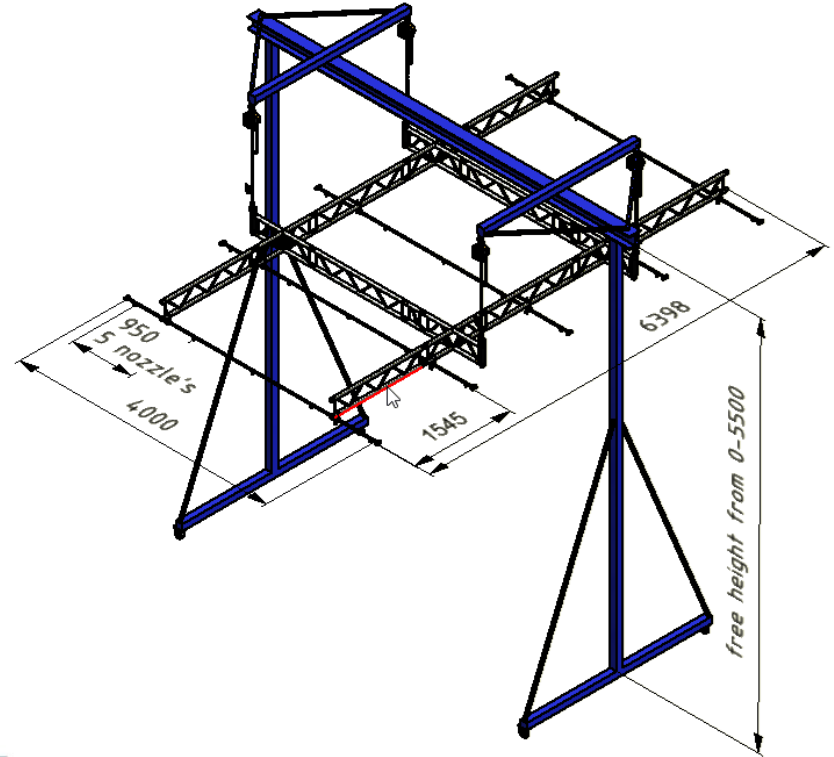


Additional feature for large climate chamber
<https://www.sirris.be/largest-climatic-test-chamber-in-europe>



- 25 ice spray nozzles
- Ice spray coverage area between 22m^2 – 30m^2 (depending on distance of the array to object)
- Possibility to mount the array under different angles
- Different types of icing: rime/glaze/mixed
- Investment supported by EU Project Newskin

(more info: <https://www.newskin-oitb.eu/>)

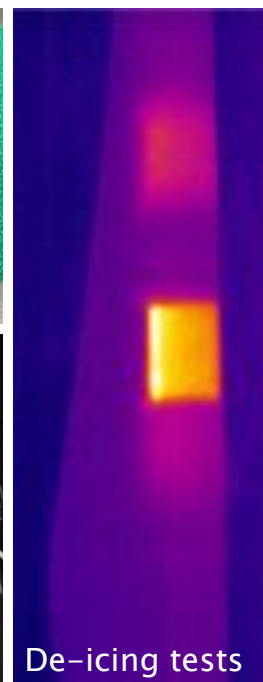
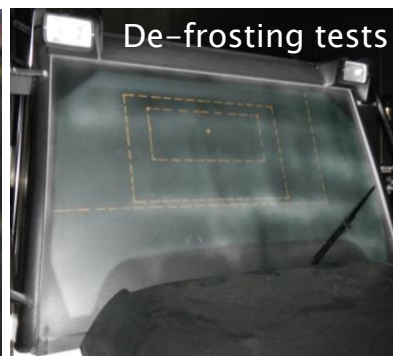
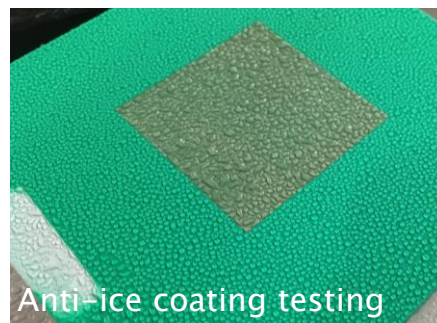


Type of testing possibilities (at large scale) for different industries

- R&D and Validation testing of:
 - Anti-ice / de-icing solutions
 - Heat trace & heating strategy testing
 - Coatings / functional surfaces
 - Ice monitoring and detection technologies
 - Ice break and ice-blockage testing



Examples of icing tests that can be executed for R&D and validation testing



Contact point: Ozlem Ceyhan Yilmaz
(senior engineer & Project leader COOCK Fighting Icing)

+32 493 31 06 49

Ozlem.Ceyhan@sirris.be

<https://www.sirris.be/nl/users/ozlem-ceyhan-yilmaz>

