

Decoding Our Business Essence

How to find us?

www.exatronik.pt

Zona Industrial da Taboeira, Stadium Park, Pav. IL
3800-373 Aveiro - Portugal

Email:
comercial@exatronik.pt

LinkedIn:
<https://www.linkedin.com/company/exatronik>

We transform
complex ideas into
unique solutions that
simplify and improve
people's lives

Born leaders in Electronic Solutions

Exatronic is a subcontracting company that excels in delivering comprehensive engineering, production, and testing services. Through specialized innovation processes, Exatronic offers integrated solutions encompassing hardware and firmware engineering, industrialization, assembly, and end-of-line testing across diverse sectors.

Distinguished in innovation, research, and manufacturing services within the electronics domain, Exatronic is a key player providing top-notch hardware and firmware engineering, industrialization, assembly, and final product testing across various industries. Fueled by a commitment to innovation, Exatronic boasts a team of highly qualified and motivated professionals dedicated to delivering services and products adhering to the highest quality standards. In addition to its core services, Exatronic also pioneers the digital transformation of multiple sectors by offering cutting-edge IoT systems and digital twins.

**Electronics Engineering****Manufacturing****Innovation & Research**

Elevating Electronics Solutions with Expertise in Engineering, Manufacturing, and Cutting-Edge Innovation



Electronics Engineering

Specializing in electronics engineering, our expertise encompasses product development, analog and digital circuit design, and DFM analysis. We utilize a 3D environment for comprehensive design, including photorealistic simulations. Thorough validation involves techniques like thermography for circuit thermal performance. Our services extend to firmware and software development, with EMC verification in our laboratory. Collaborating with accredited labs, we ensure electrical safety compliance and contribute to testing protocols for accelerated aging. Accredited European labs support the verification processes for CE mark implementation.

[Know more](#)



Manufacturing

Our internal manufacturing capacity, a crucial element of our value proposition, ensures superior flexibility, protection of industrial property rights, and an optimal price/quality ratio for our customers. Exclusive use of our in-house production facilities distinguishes us; we refrain from subcontracting electronic assembly. Our capabilities include automatic SMT, selective and wave welding, and automatic visual inspection (AOI and X-rays). We conduct manual or automatic testing according to customer specifications, employing equipment and software developed either by customers or our in-house engineering department.



Innovation & Research

Exatronic engages in extensive innovation and research through collaborative R&D projects lasting up to three years. Partnering with national and European entities, these projects leverage multidisciplinary skills to address concrete innovation opportunities. Exatronic collaborates with specialized entities in various fields, including telecommunications, mechanics, industrial product design, cloud computing, health, and precision agriculture. The company holds governmental recognition for its suitability and reputation in research and innovation, focusing on advanced technologies in health, IoT, and high-value innovative products within production technologies and product industry. Many of these R&D projects receive co-financing from national or European funds.

How it started & how it's going

- 2023**
Installation of more machines
Doubling production capacity
- 2022**
Doubling the production area
Increase in the engineering area
New warehouse
- 2019**
Machinery asset renewal
Doubling production capacity
X-ray inspection
Applying to IPC membership
- 2017**
ISO 9001 Certification extended to electronics production
- 2015**
Acquisition of a small electronics production company
Production in-house

- 2008**
ISO 9001 Certification in Electronics Engineering
- 2007**
Consolidated Design & Development team

- 1995**
Exatronic was founded



Our Value Proposition: An end-to-end approach



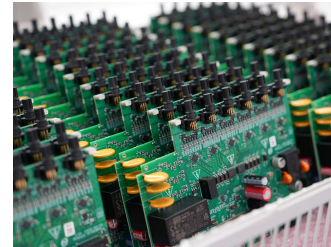
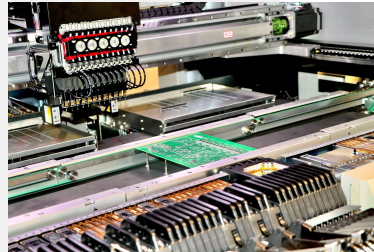
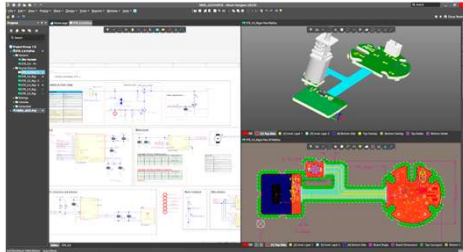
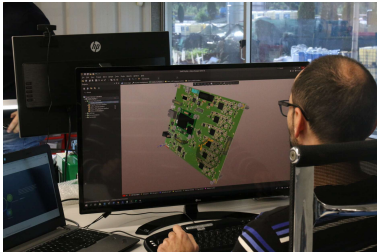
Electronics Engineering

- Design & Development
- Project updating
- Direct part replacement



Manufacturing

- Process Engineering & Industrialization
- Procurement & Supply-chain management
- PCBA
- FASSY
- Cabling harness production equipment;
- Traceability process;



Elevating Electronics Solutions with Expertise in Manufacturing



Industrialization

Setting up the supply-chain

Identifying alternative sources for preselected suppliers with competitive offers

PCBA: In-house assembly and testing;

Plastic parts: Injection molding with local partners;

Packaging & printed paper: Production through local partners.

Design for Manufacture & Continuous improvement

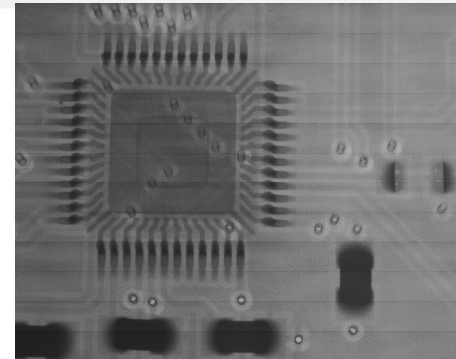
Ensuring efficiency in manufacturing processes:

Manufacturing tools & process: in-house design and conception;

Providing complete support throughout the product's lifetime, including second designs and alternative parts.



PCBA Manufacturing



What we do in PCBA Manufacturing



SMT soldering

Surface mount Assembly

Two SMT lines with the capacity to place 50,000 components per hour;
16 zone reflow process;
Automatic Optical inspection & X-ray inspection;
X-ray inspection



THT soldering

Through-hole Soldering Process

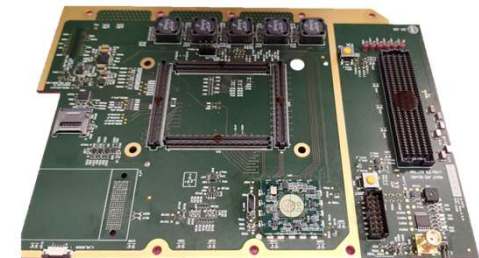
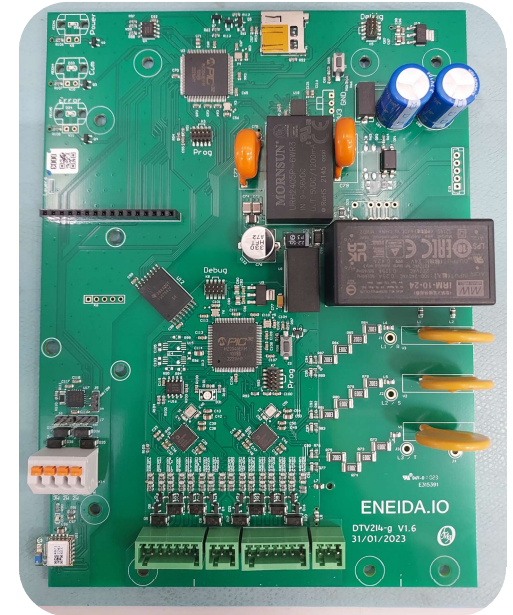
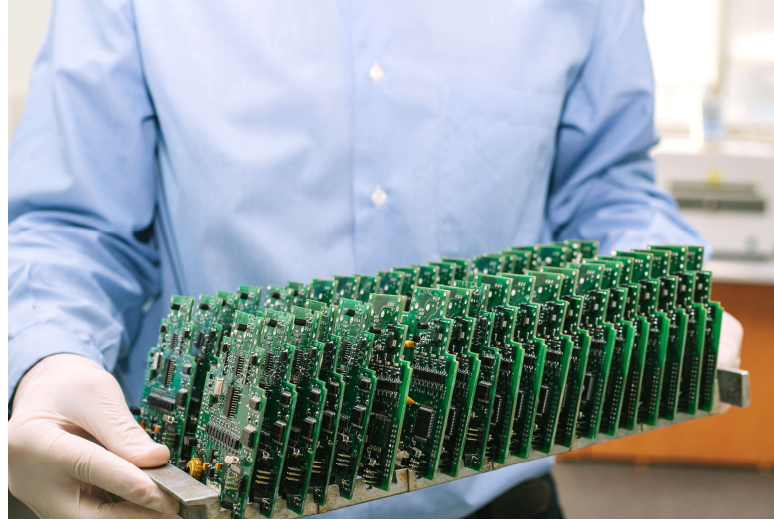
Selective and wave THT soldering machine.



Final Assembly

Includes:

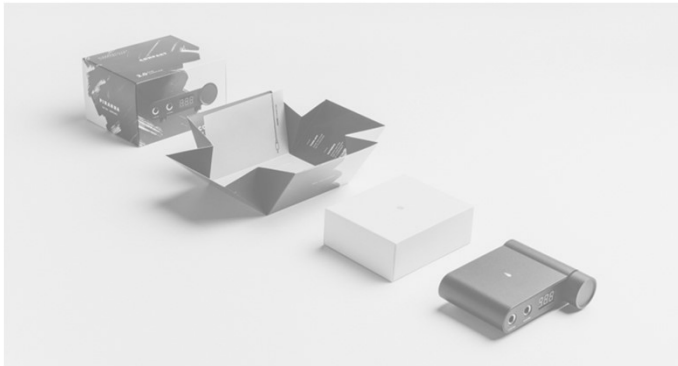
Microcontroller Programming;
Cabling processing;
Enclosure assembly;
Serial number placement and traceability;





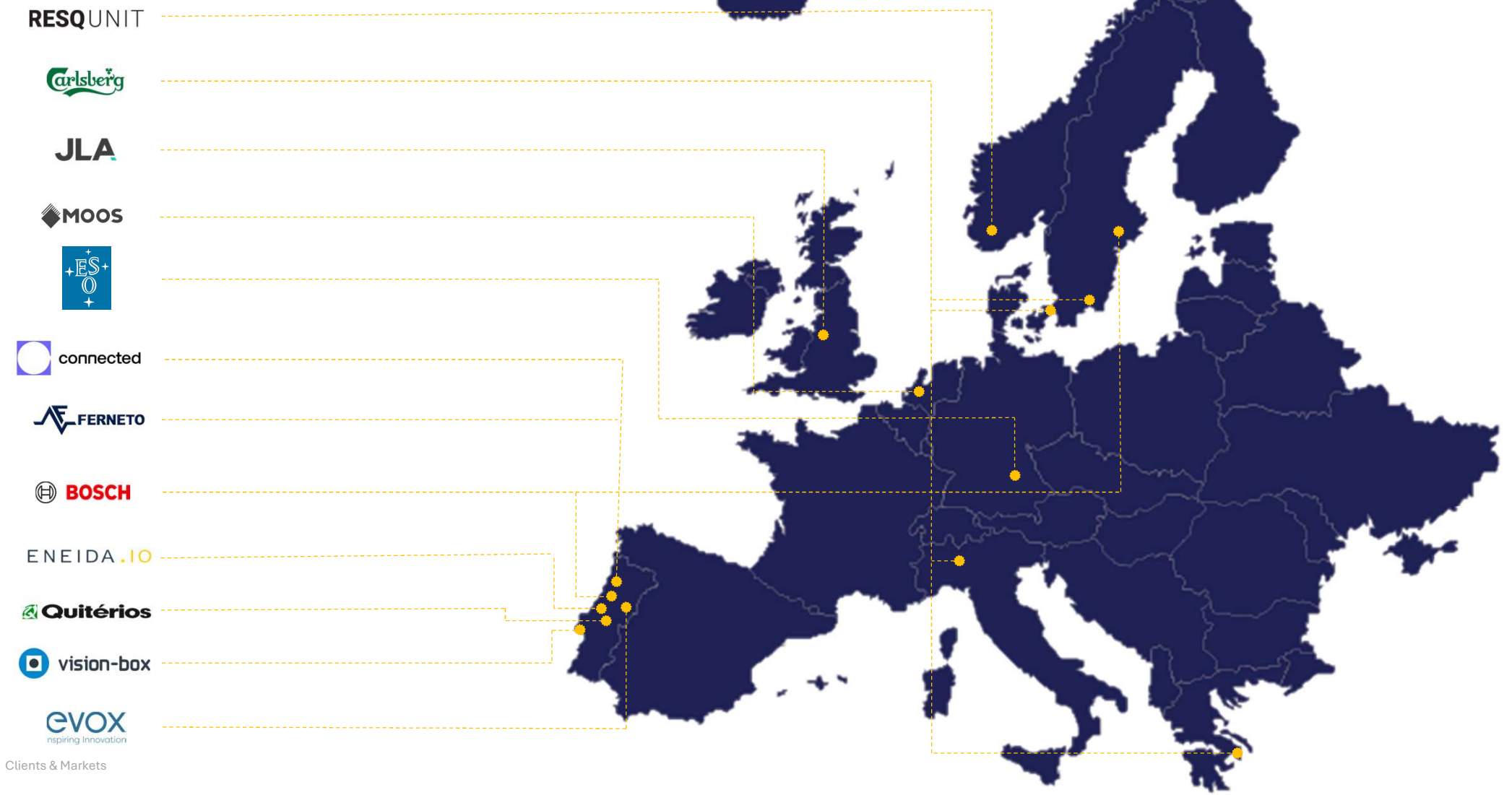
Case Studies

From expert PCBA soldering, FASSY and final packaging



DRAUGHTMASTER





A large industrial machine, likely a CNC router or mill, is shown in a dimly lit environment. The machine has a dark, metallic finish with various components, including a large horizontal table, a vertical column, and a moving head. The 'ersa' logo is visible on the side of the machine. A bright light source is visible on the right side, illuminating part of the machine. The overall scene is industrial and technical.

EXATRONIC

Stay tuned.

How to find us?

www.exatronic.pt

Zona Industrial da Taboeira, Stadium Park, Pav. IL
3800-373 Aveiro - Portugal

Email:
comercial@exatronic.pt

LinkedIn:
<https://www.linkedin.com/company/exatronic>