



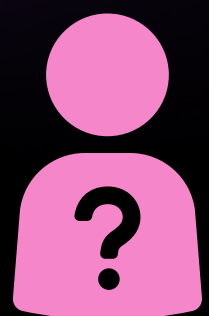
AI Powered Voice Technologies

Tech that Thinks. AI that Evolves.





Introduction



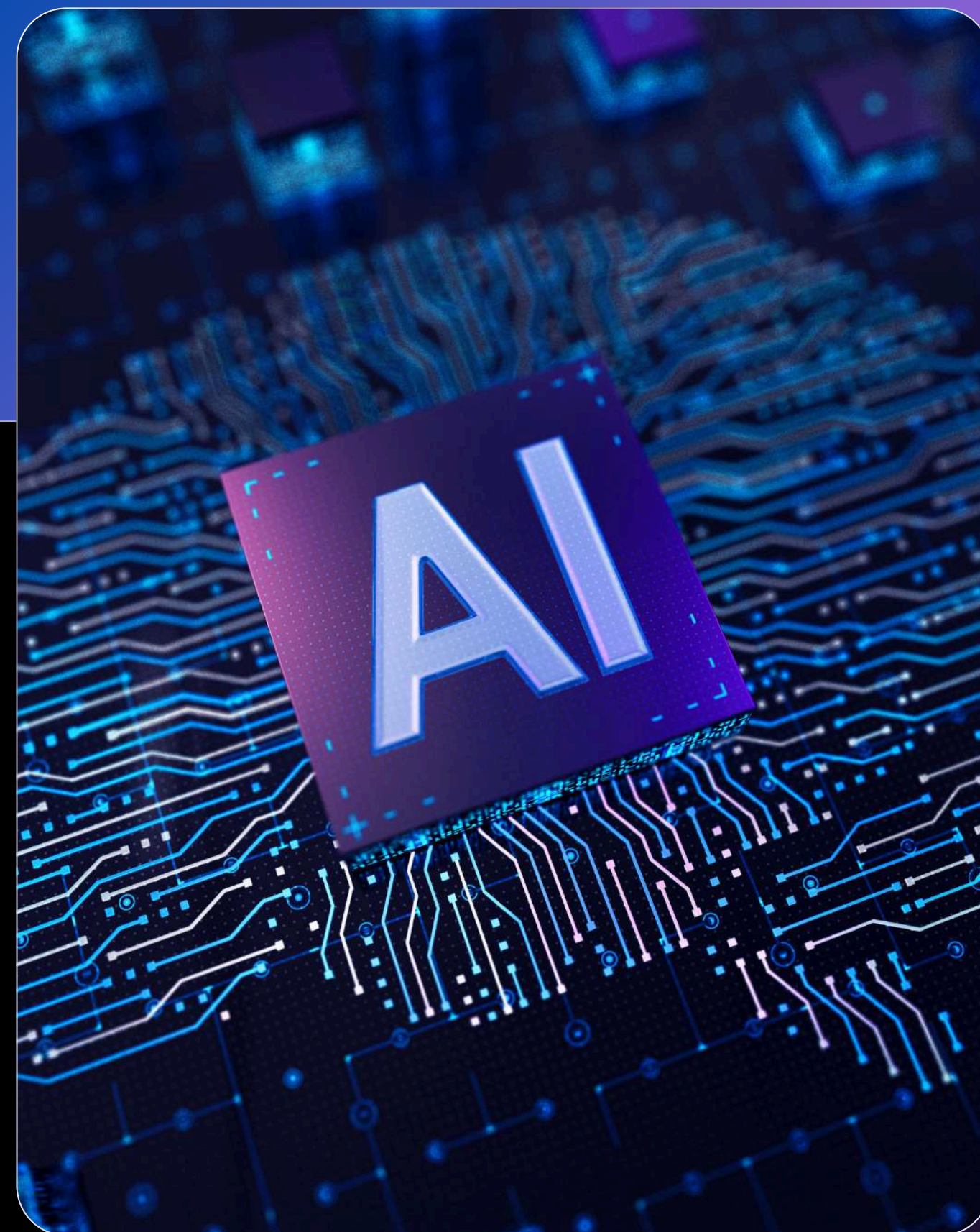
Who Are We?

- Klassifier is a global AI startup reimagining how people and organizations interact, building intelligent systems that understand, speak, analyze, and connect across languages, channels, and industries.



What We Do?

- Klassifier enables human-level, real-time voice communication across languages at scale. We help organizations eliminate language barriers and deliver superior customer experiences while increasing efficiency across global industries.





Our Technologies



Speech-to-Text Model

- In-house technology converts audio to text, automating transcription for greater speed, efficiency, and accuracy.



Voice Translation Model

- Converts speech into text across multiple languages, making multilingual understanding smooth and effortless.



Conversation Model

- Translates real-time two-way conversations into multiple languages in both voice and text.



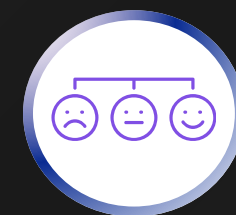
Voice Cloning

- Creates realistic digital voices that preserve tone, style, and emotion for brand or personalized voice identities.



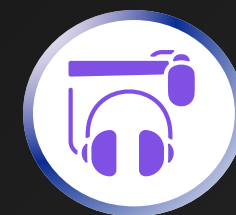
Text-to-Speech Model

- In-house technology converts text into natural speech for accessible, engaging audio experiences.



Emotion Based Text-to-Speech Model

- 30+ languages with natural, human-like speech, featuring emotion layers and voice customisation in 8 languages.



AI Powered Dubbing

- Enables scalable multilingual dubbing using multiple voice options, delivering natural-sounding audio across languages.



Klassifier: Voice AI Agent



Today's chatbot solutions fall into two broken categories and both fail users.



Text-Based AI Chatbots

- **70%+** of users abandon text-based chatbots due to poor experience.
- Users are forced to type instead of talk.
- Limited context understanding and repetitive responses.
- Low engagement and weak emotional connection.



Voice-Based AI Chatbots

- Monotonous, emotionless voice interactions.
- No tone adaptation, empathy, or conversational flow.
- Users quickly recognize they are "talking to a machine".
- Voice becomes a channel—not an experience.



Current chatbots communicate but they don't connect.



AI Voice Agent Overview



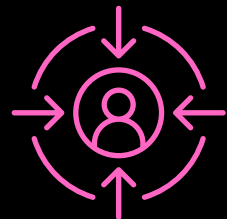
ULTRA-FAST REAL-TIME RESPONSES (0.3 SECONDS)

Delivers near-instant conversational replies, ensuring smooth, human-like interactions without delays.



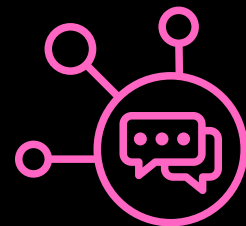
NATURAL, HUMAN-LIKE, MULTILINGUAL VOICE MODELS

Provides lifelike speech across multiple languages and emotions, enhancing clarity, trust, and user engagement.



CUSTOMIZED, SECTOR-SPECIFIC AI MODELS

Adapts to each company and industry with tailored conversational knowledge, delivering highly accurate, domain-relevant responses.



MULTI-CHANNEL DEPLOYMENT ACROSS ALL PLATFORMS

Works seamlessly across IVR, mobile apps, websites, and more for unified, scalable customer support.



Custom voice & brand alignment

Voice cloning enables fully branded AI agents aligned with corporate identity



Emotion-Aware Responses

Detects user sentiment and adapts tone and delivery in real time



Where Others Stop, We Go Further

What's Broken in Today's Market

Our Solution, Reimagined

1

Most Solutions Don't Own Their Core AI Models



Proprietary, enterprise-ready AI models

2

Voice Solutions Are Either Fast Or Human Rarely Both



Human-level voice AI, fast, emotional, and natural

3

Multilingual experiences are fragmented and inefficient



One platform for global, multilingual communication



Market Traction

2

International Events

- Official AI Translation Partner, delivered real-time translation and subtitles for global audiences.

3500+

Platform Users

- Users engage with our platform, demonstrating a need for scalable real-time voice technologies.

\$25,000

Revenue to Date

- This represents the total revenue generated so far, validating early market demand and commercial traction for our solution.

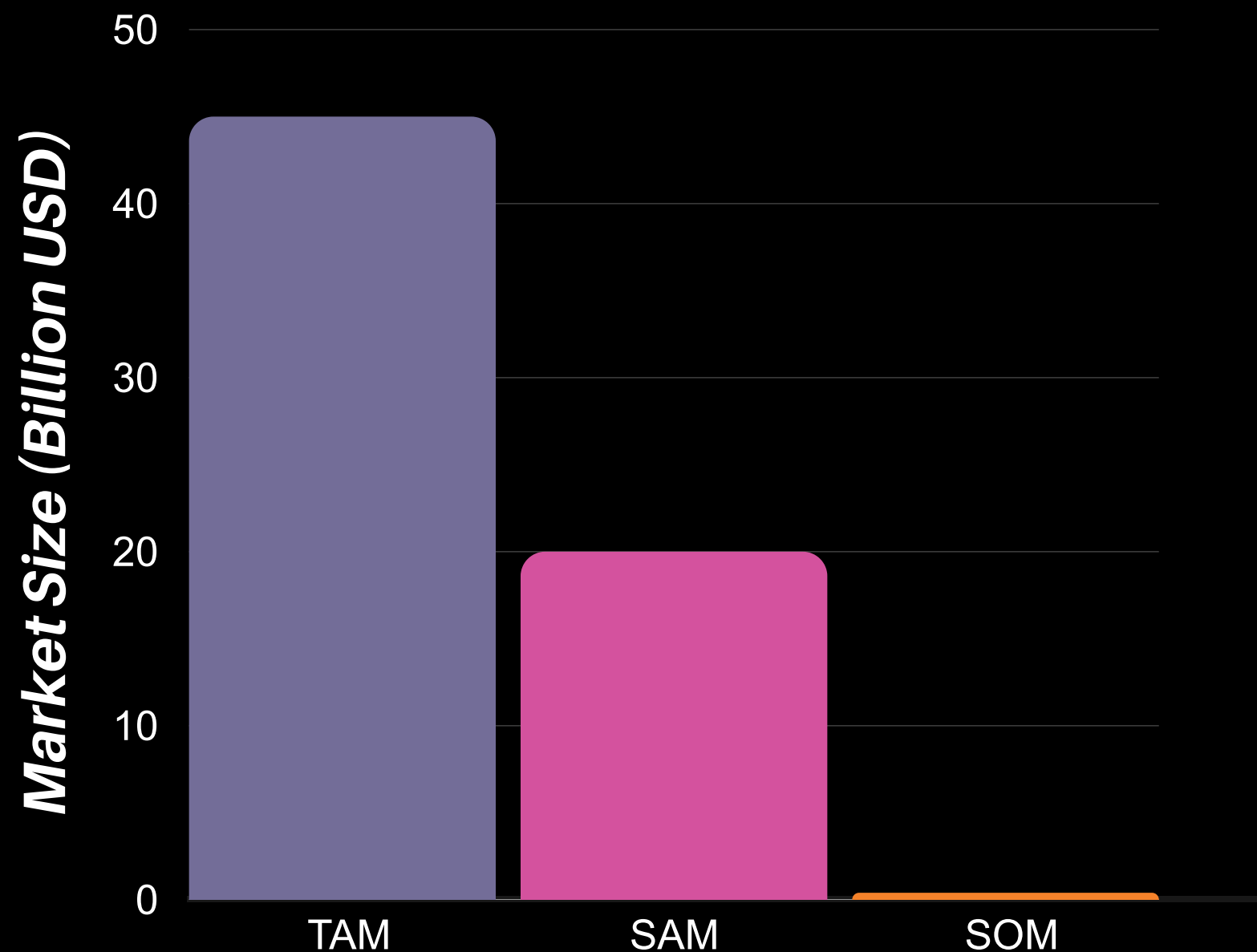


Early Interest & Deals in Progress

- Rising demand for AI voice solutions across events and industries.
- Multiple PoCs underway with clients exploring integration.



Estimated Market Size for AI Voice Chatbot



1. Total Addressable Market (TAM)

- The global market for AI-powered customer service, conversational AI, and voice automation is expanding rapidly as enterprises replace human-heavy support models with scalable AI solutions. **~\$45B (2025) → ~\$110B+ (2030)**

2. Serviceable Addressable Market (SAM)

- Voice-enabled, emotion-aware AI chatbots are becoming a core layer of modern customer service, replacing traditional IVR systems and handling first-line support across channels. **~\$20B – \$25B**

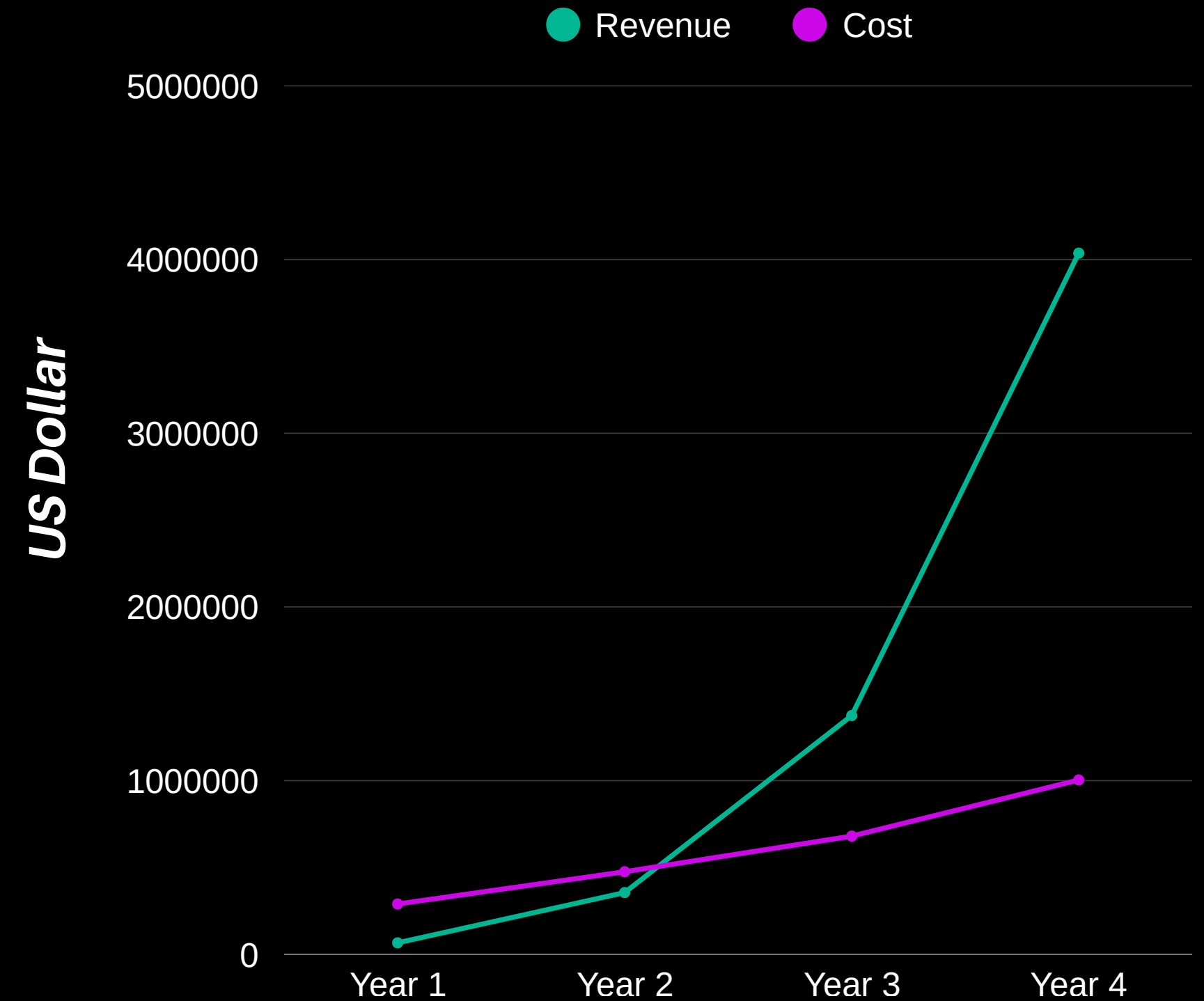
3. Serviceable Obtainable Market (SOM)

- Realistically Achievable Market (3–5 Years): A focused, attainable market driven by enterprise adoption in call centers and customer service automation. **~\$400M – \$600M**



Financial Projections

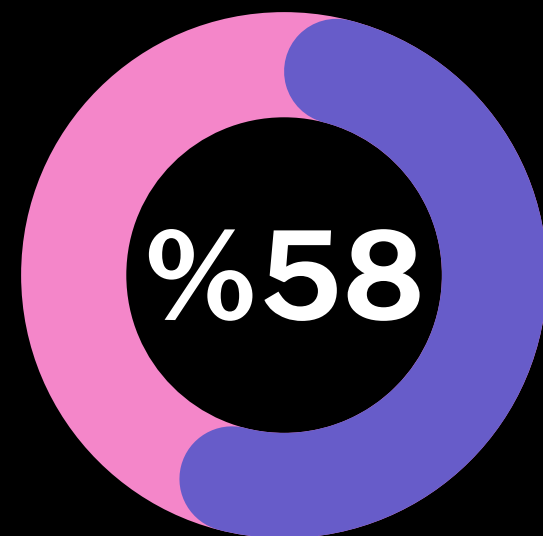
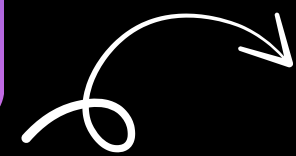
Year	Revenue	Cost
1	\$66,111	\$289,750
2	\$355,598	\$475,400
3	\$1,374,390	\$680,500
4	\$4,036,901	\$1,003,850



TOTAL REVENUE
\$5,833,000

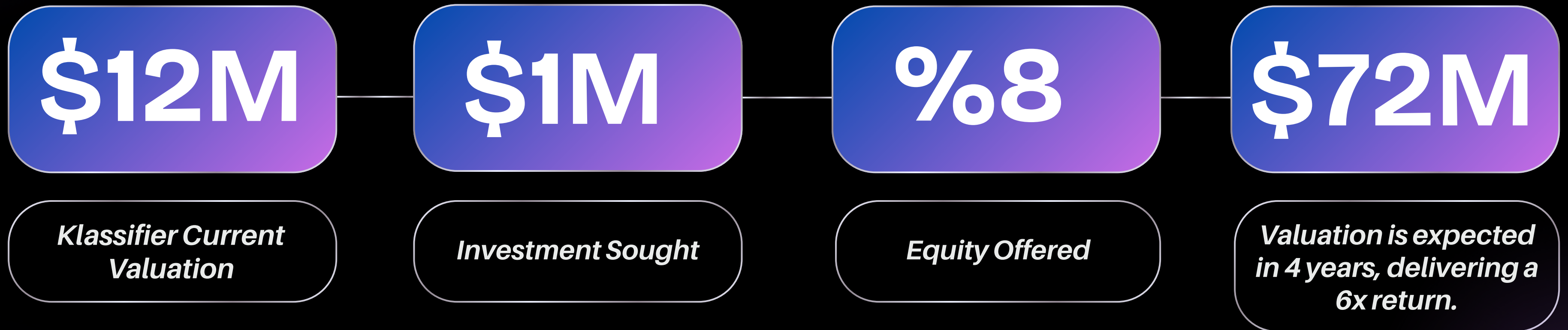
TOTAL COST
\$2,449,500

Profit Margin (%)



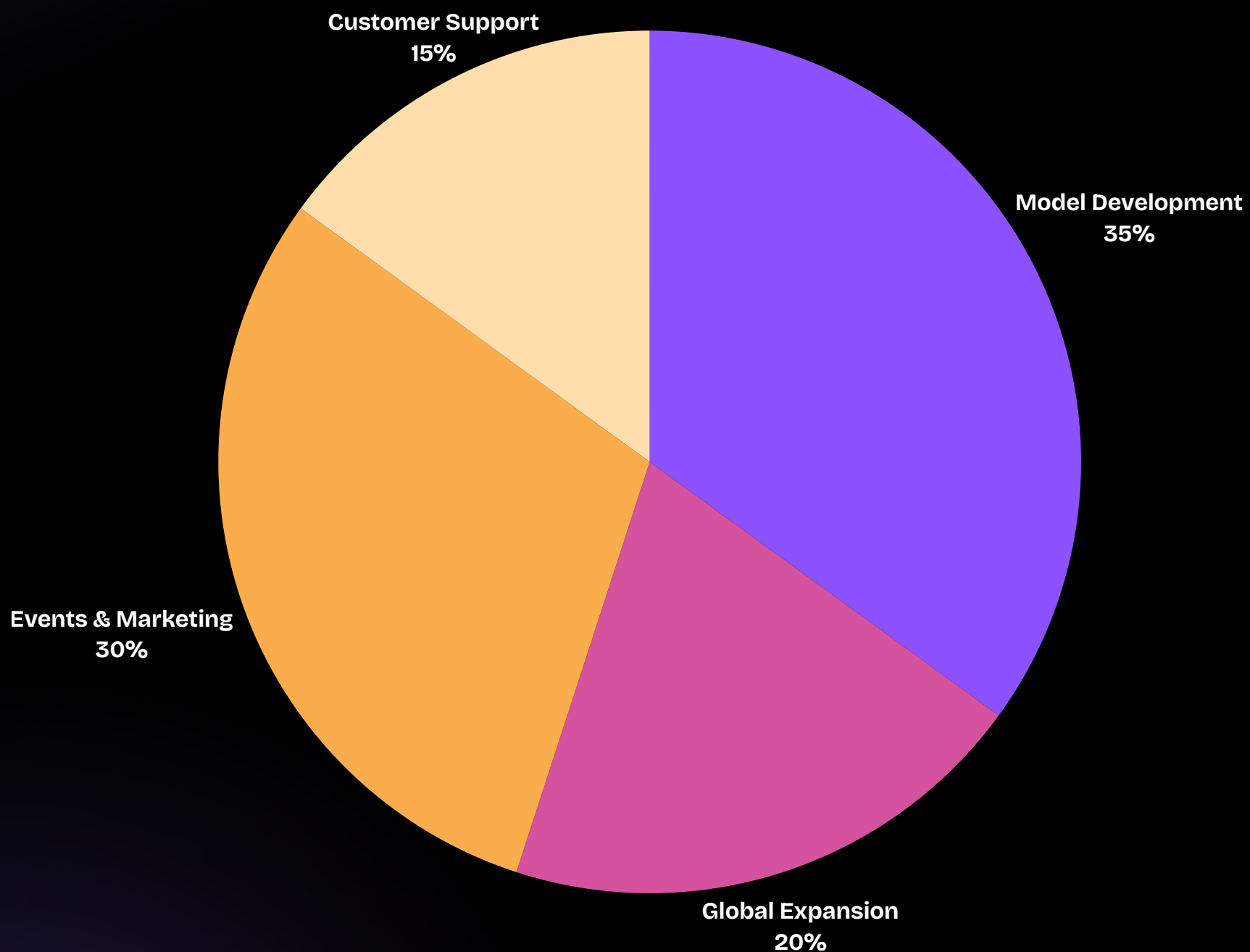


Valuation & Growth Outlook





Use of Investments



1. Building Additional Sales & Support Team for Klassifier

- Scale sales operations to accelerate customer acquisition and revenue growth.
- Enhance customer support capabilities to improve user experience and customer satisfaction.

2. Participation in Global Events & Marketing Activities

- Improving our existing voice models and creating new advanced models by leveraging regional data diversity, real-world use cases, and deeper market insights.

3. Expanding into the Market & Establishing Representative Offices

- Expanding into the different markets, world AI ecosystem, to accelerate enterprise growth and strategic partnerships.
- Expanding across MENA, Europe and high-value multilingual markets including Canada, Belgium, and Switzerland.

4. Model Enhancement & New Model Development

- Improving our existing voice models and creating new advanced models by leveraging regional data diversity, real-world use cases, and deeper market insights.

AI

Experience the Future of AI!



<https://klassifier.com>



hello@klassifier.com