



MCR Clinic™ integrates with EHR and patient's medical record becomes a source documentation of the study participant

Seamless transition into #HybridModel

With reduced number of physical monitoring visits (on-site) and remote access to eSource eliminating 'over the shoulder' access

To become EHR2EDC single point of data capture

- ✓ We automate SDV through integration with EHR
- ✓ We accelerate real-time monitoring online
- ✓ We simplify day-by-day management of clinical trials

Trial Management for Site

Remote Monitoring for Sponsor



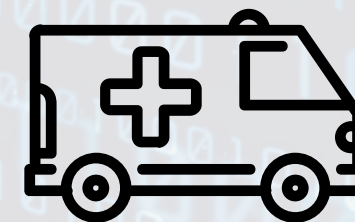
— MCR Clinical
Site Manager™
CSM™



— MCR eSource
Remote Viewer™
eSRV™



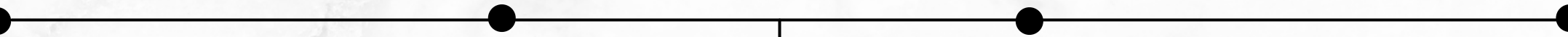
— MCR Data
Communication
Integrator™
DCI™



New class of IT systems

MCRCLINIC

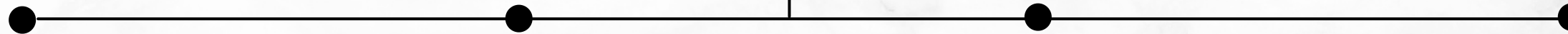
All-in-One Financial control No delays Efficiency



Automation Security



Remote access Statistically healthy data Competitiveness Savings



Security of MCR Clinic™ systems

1
—
FHIR Standard
Fast Healthcare
Interoperable
Resource

2
—
HL7 Standard
exchange of
medical data

3
—
GDPR
personal data
protection

4
—
21 CFR part 11
conducting
clinical trials
requirements

MCR Clinic™ Automation



Efficient study start-up
CTMS + eTMF + ISF +
Remote Monitoring



No more manual data
entry and verification
in sponsor databases



Conduct of clinical
trials according to
the #allinone approach

Focus on medical issues & key challenges

Trial Management

- Comprehensive management
- Budgeting and controlling
- Site-sponsor communication 24/7/365

Remote Monitoring

- Online access
- High quality, fewer errors
- Generation of statistically healthy data

Milestones



BETA SYSTEM

Tested on 6 oncology studies by Astra Zeneca and Roche



MCR CLINIC™ LICENSE

Integration with EHRs



GLOBAL PARTNER CAMPAIGN

Collaboration on reusing routinely collected EHR data in clinical trials



**Władysław P.
Halbersztadt**

Technology
& Finance



**Mariusz
Olejniczak**

Strategy



**Paweł
Wołkowski**

Data



Paulina Roś

Research
& Development



**Krystyna
Antolak**

Product
& Compliance



**Anna Urban-
Marcinkiewicz**

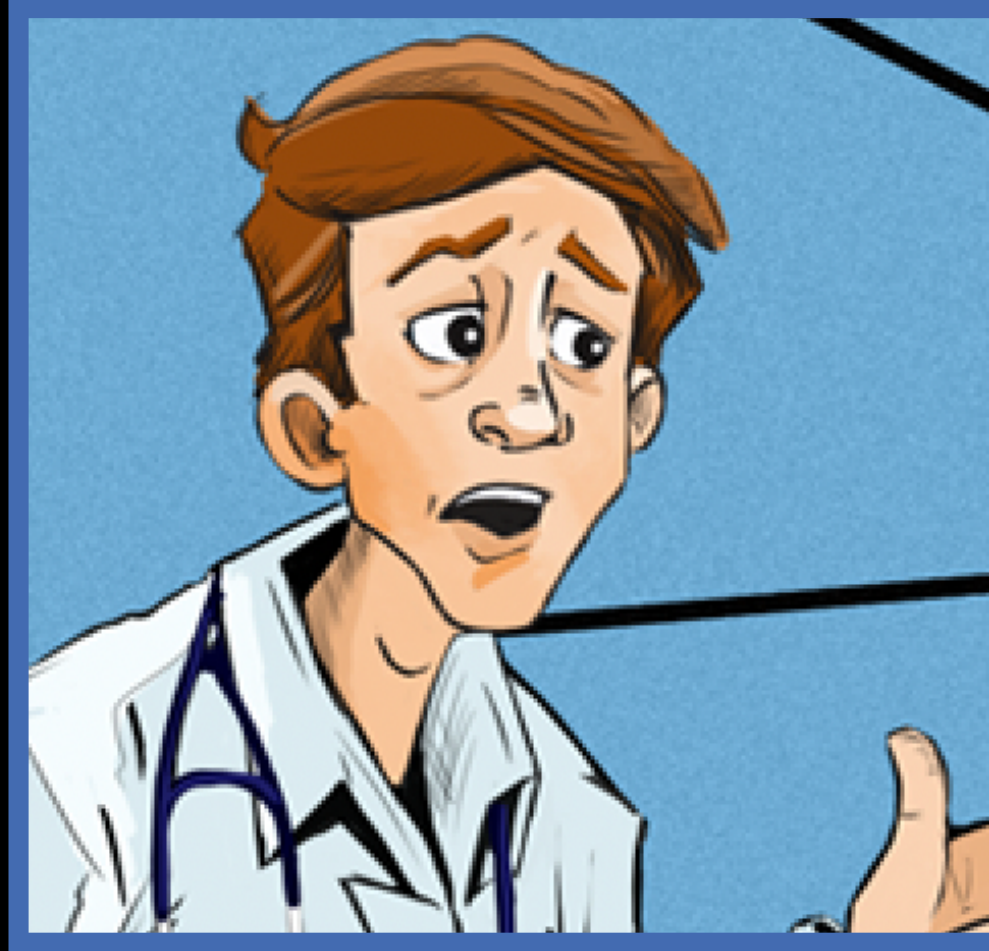
Sales
& Marketing

A true story based on facts... :)



MCrose Full Stack Software Developer

works on remote monitoring
revolution...



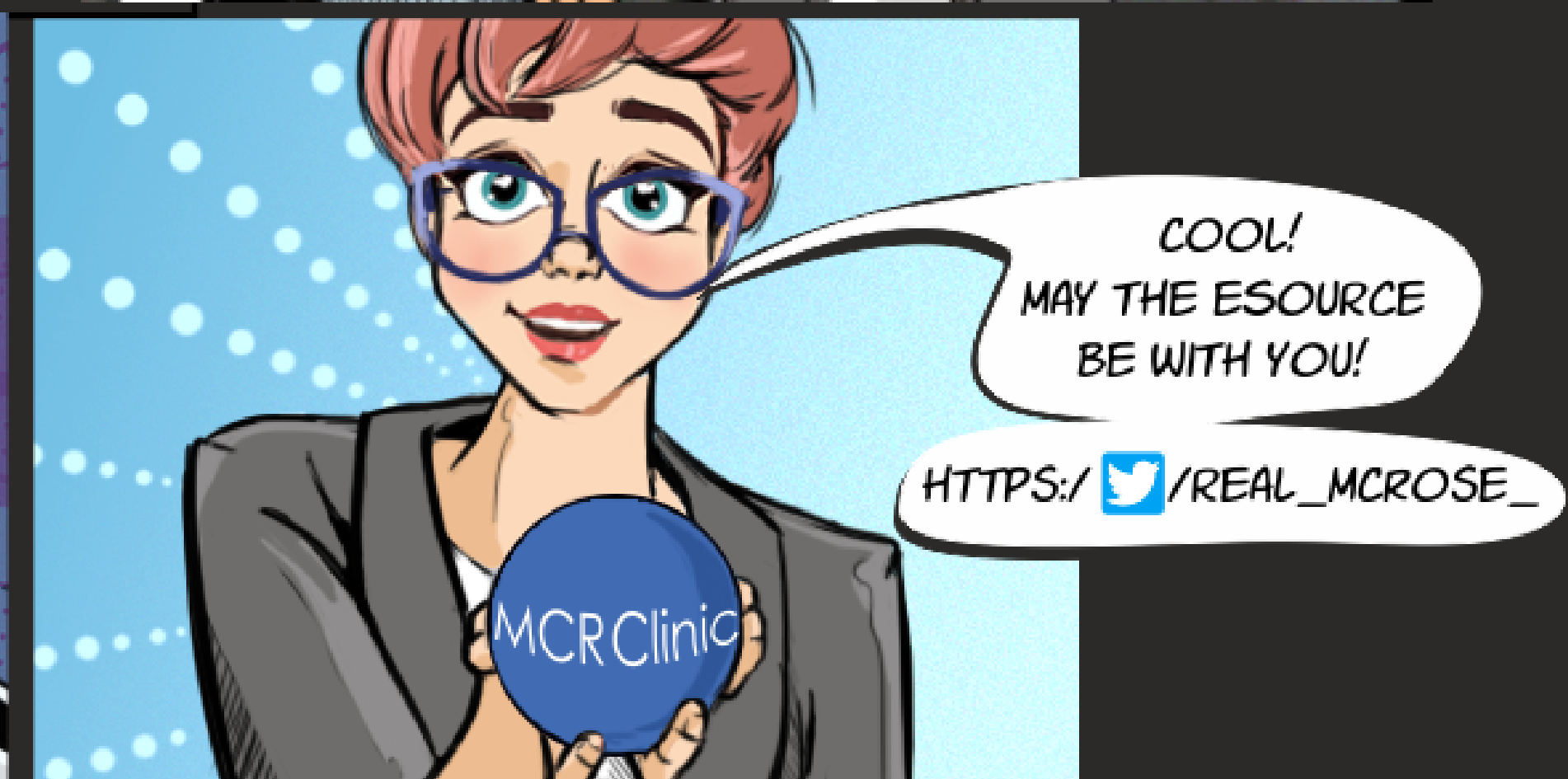
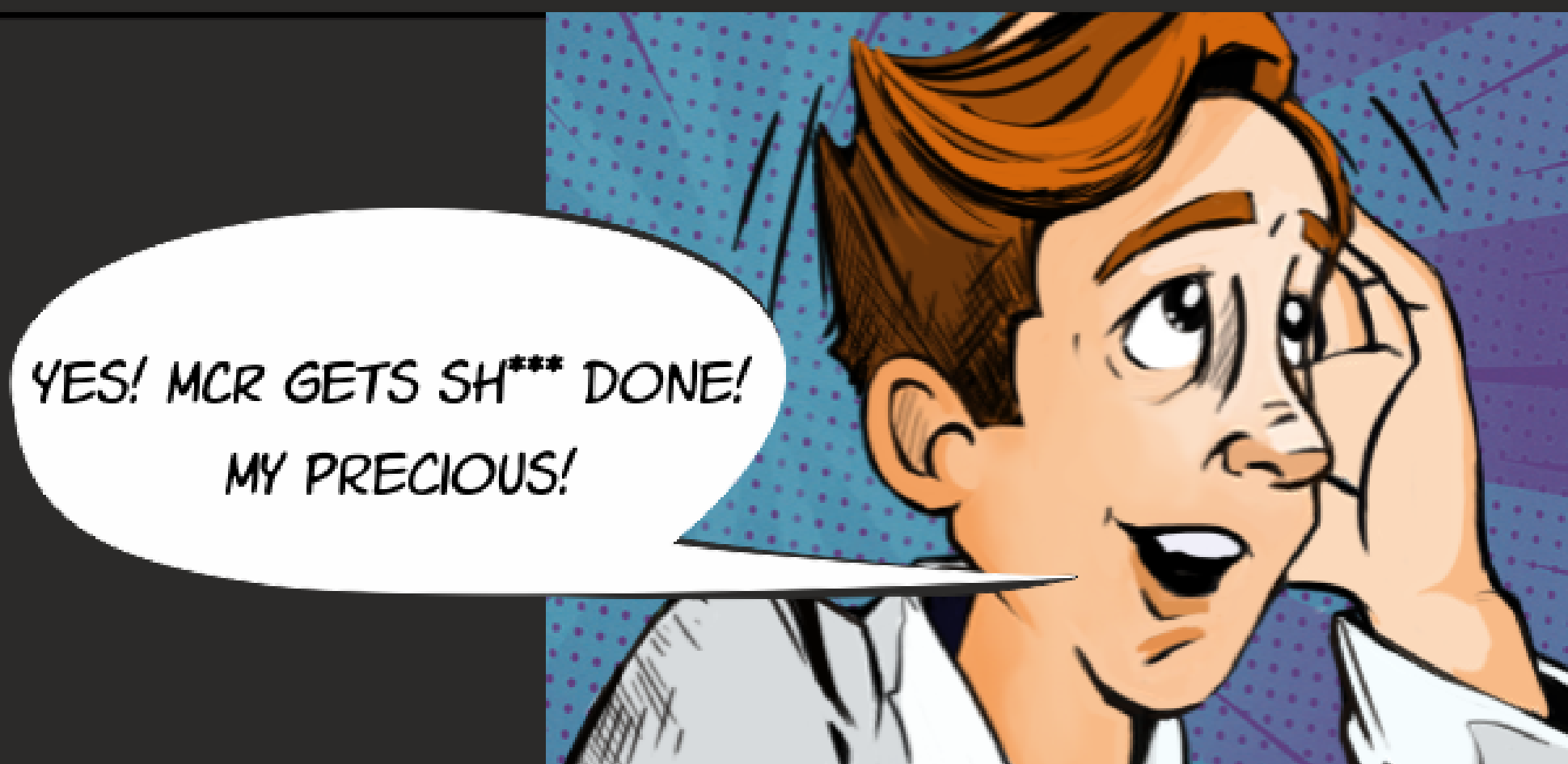
Scott Clinical Research Coordinator

having too much paperwork
and not enough time...



Hybrid the Dog Best Companion Ever

it all started with him...



— MCR Clinic HQ
Nowy Świat 60/9
00-357 Warsaw Poland

— Anna 789 266 610
Krystyna 789 229 070

— <https://mcr.clinic>
info@mcr.clinic

— [www.linkedin.com/com
pany/mcr-clinic](http://www.linkedin.com/company/mcr-clinic)

[https://twitter.com/
real_MCRose_](https://twitter.com/real_MCRose_)

