



FUNCTIONAL
**PHOTOVOLTAIC
CANOPIES**



 UltraHinge



Redefining modern canopy design

- At **UltraHinge**, we specialize in fixed and retractable canopy systems that offer the perfect balance of protection, aesthetics, and energy production.
- Our durable structures, covered with a semi-transparent PV layer, ensure comfort in any season.

ultrahinge.com



Smart Solutions for homes and businesses

- We design long-lasting canopies that add value to your property.
- They shield against sun and rain, creating extra functional outdoor space.
- Built to withstand the elements, they're made to last for years.

 **UltraHinge**



 Ultra PV

Ultra PV

Folding solar canopy



The world's first
durable photovoltaic
awning

This retractable solar canopy gives you complete control over your outdoor space, while also cutting energy costs.

In summer, it provides cooling shade, and on overcast days, it lets in more light — exactly when you need it.

Ultra



 Ultra PV



 Ultra PV





Specification	Model H1	Model H2
Power	1,7 kWp	2 kWp
Linear drive power	2 x 12 000 N	
Weight	295 kg	330 kg
Width	400 cm	460 cm
Projection	285 cm	
Height when folded	140 cm	
Durability for multiple operations	Class 2: 7,000 cycles	

Why Choose Ultra PV?

■ Energy Generation

Uses bifacial solar panels that capture both direct and reflected sunlight, generating up to 2 kWp of power.

■ Built to Last

The galvanized, powder – coated steel frame is highly resistant to corrosion and harsh weather.

■ Automation & Smart Home

Sensors track wind conditions, and when speeds exceed 36 km/h, the system automatically retracts, ensuring safety and durability. Smart Home integration allows remote control of the canopy, energy output, and LED lighting via a smartphone or remote control.

■ Plug & Play Installation

Simply plug it into a standard power outletbuilt – in microinverters and AC/DC protections handle the rest.

■ Adjustable LED Lighting

Integrated dimmable LED lights provide the perfect ambiance, day or night.





Solid PV

Fixed solar canopy



An **elegant, architecturally refined canopy** that blends seamlessly into modern designs.

Its versatility makes it an ideal solution for terraces, balconies, and entrances.

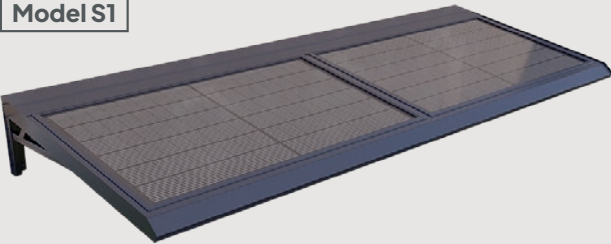


 Solid PV

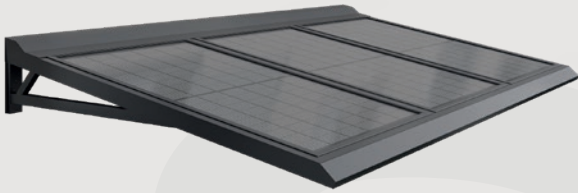


Specification	Model S1	Model S2
Power	880 Wp / 1000 Wp	1320 Wp
Weight	150 kg / 175 kg	205 kg
Width	350 cm / 420 cm	360 cm
Projection	140 cm	205 cm
Snow Load Category	3	

Model S1



Model S2



Why choose Solid PV?

- **Energy generation**
Provides **up to 1.35 kWp** of solar power, thanks to bifacial panels that maximize energy capture.
- **Corrosion-Proof Frame**
The galvanized steel construction with a **powder-coated finish** resists rust and wear.
- **Weather-Resistant**
Fully protected against rain, sun, and snow, ensuring year-round reliability.
- **Quick Installation**
Just plug it in and let the built-in **microinverter** and power management system take care of energy distribution.
- **Adjustable LED Lighting**
Built-in lighting lets you control brightness levels, so you get the **perfect atmosphere**, any time of day.







ul. Żurawia 71
15-540 Białystok, Poland
office@ultrahinge.com
tel. +48 531 603 663

ultrahinge.com

