



BY OPENMOTION 

Cleaner and smarter cities

AI >>> data >>> human



Management team: 3 complementary partners



GAËL COBERT

Founder – President – CTO

Fine Arts of Lyon

Design & Development

Carried out numerous projects for cities (Strasbourg, Marseille, Nîmes) and large international groups (Total, Carrefour, GSF).

Expert in app development and hardware for field teams, use of GPS data, AI image analysis.



ROMAIN LEMARIÉ

Partner – COO

Arts et Métiers Engineer

Master of Commerce

Has been working for 20 years in the waste sector and then in logistics, has an extensive network.

Managed numerous IT projects from definition to deployment and now manages his own company.



GWENDAL COBERT

Partner – CFO

MBA ESCP-EAP

Finance & Strategy

Worked for 20 years in the management of real estate assets for international funds (Lone Star Funds), managed complex financings (up to 450M\$).

Worked on smart city projects in Dubai (Festival City) and Qatar (Msheireb Downtown Doha) and the implementation of innovative technologies.

The focus: AI for field teams productivity

Mobile applications + AI
= + 30% productivity for
field teams

Only 48% of companies use
software to manage their
teams

Only 32% of these agents'
time used to serve customers



Our expertise : producing the field data

Vizio + Nome => Image analysis to produce useful data

« vision/image » + « distribute/administer/measure »



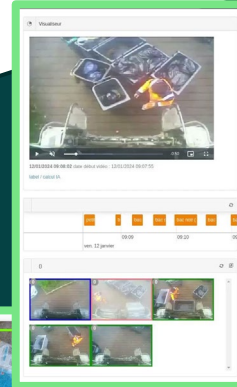
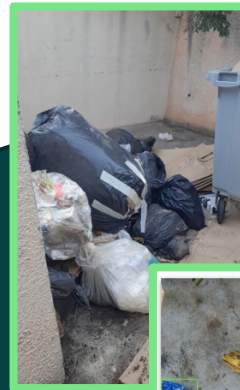
1

CAMERA DEVICE

Lightweight and non-intrusive

Voice commands– No manual intervention

Works **off-grid**

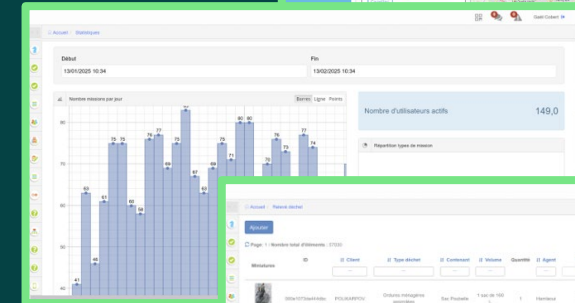
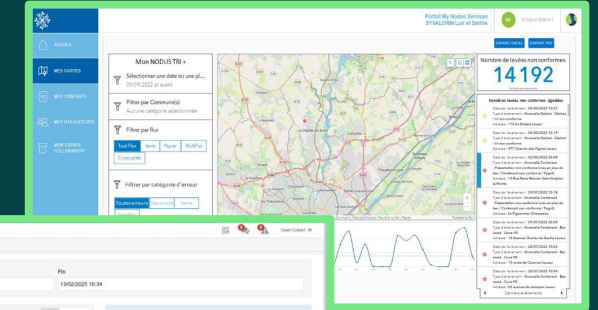


2

IMAGE ANALYSIS

Real-time and local

Configurable depending on the needs: quantity, contamination, illegal dumping, etc.



3

ACTIVITY DATA

Available **immediately**

Easy to **export** to other systems

Configurable **visualization** interface

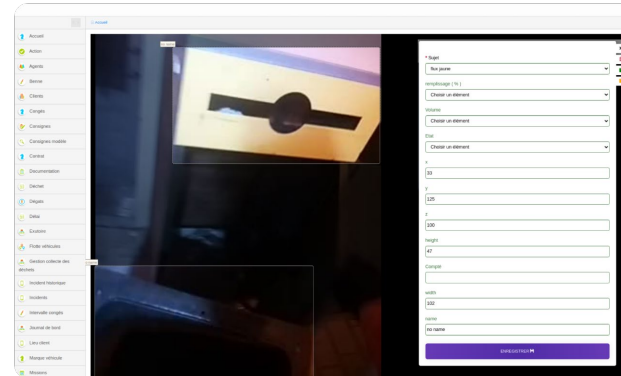
Flexibility : train your AI according to your own specific needs

Collectes des vidéos

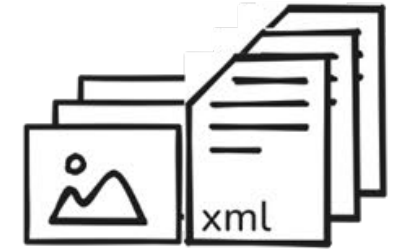


Plus on a de données d'entraînement, plus l'IA est sûre de ses détections, ce qui améliore sa précision.

Labelisations des sujets



Création du dataset



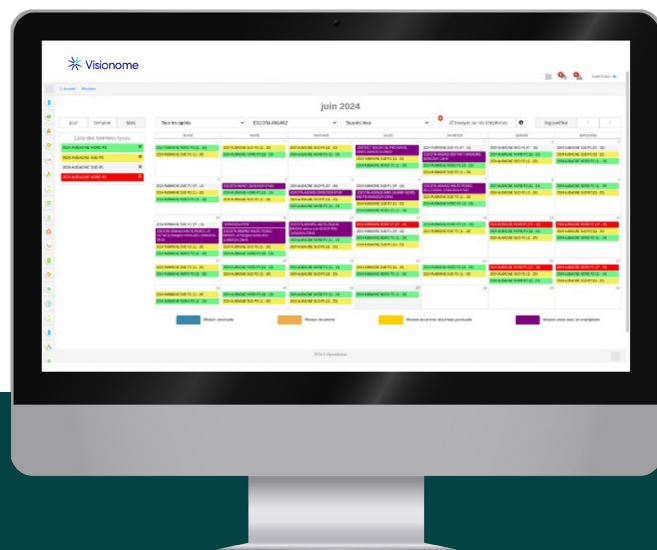
Déploiement



Entrainement de l'IA



Our solution: comprehensive and scalable



1

HEADQUARTERS

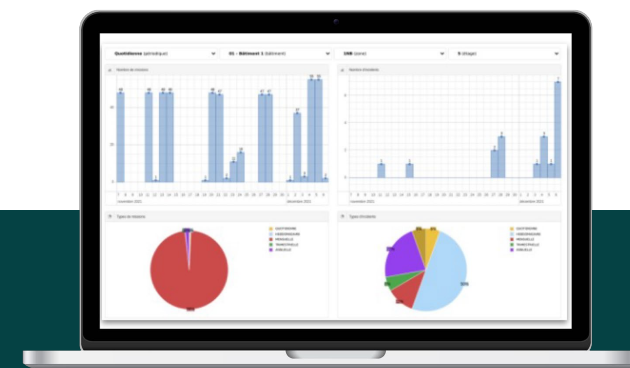
Comprehensive **back-office**
Optimized **routes**
Real-time teams **monitoring**



2

ON THE FIELD

Full IoT ecosystem
Real-time AI **analytics**
Support and instructions

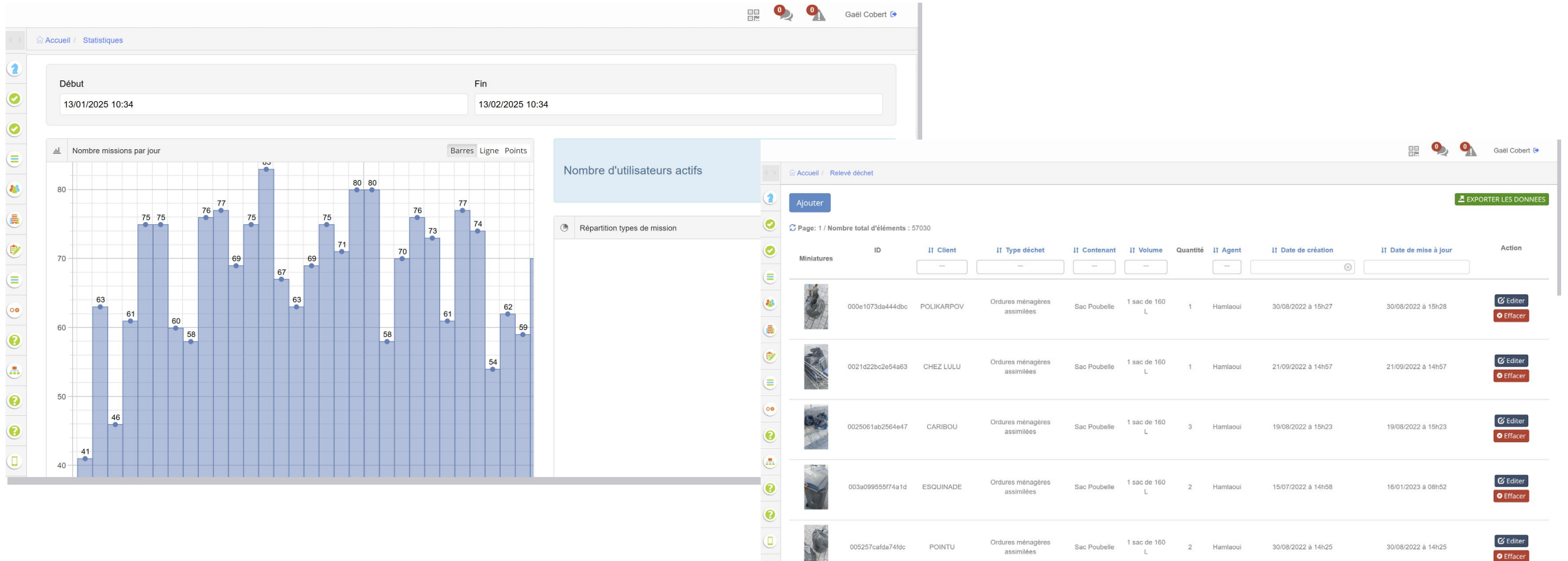


3


FOR OUR CLIENTS AND THEIR CLIENTS

Automatic **reporting and analytics**
Smart City Networking
Citizen app connectivity

Full range of dashboards



Real-time monitoring of activity



Océan

25

Missions

Une interface vous permettant de gérer via un planning interactif l'ensemble des missions de vos agents.

[Voir plus](#)

Rapports

Une liste détaillée des rapports de vos agents permettant de consulter leur géolocalisation et leur feuille de route.

[Voir plus](#)

Clients

Gestion des clients.

[Voir plus](#)

Incidents

Une liste détaillée vous permettant de consulter et gérer les différents incidents rapportés par vos équipes.

[Voir plus](#)

Agents

Gestion des agents (formations, congés ...).

[Voir plus](#)

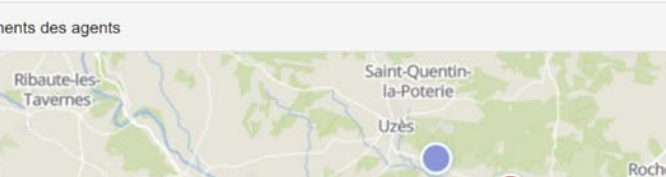
PRÉC.

28 février 2025

Aujourd'hui

SUIV.

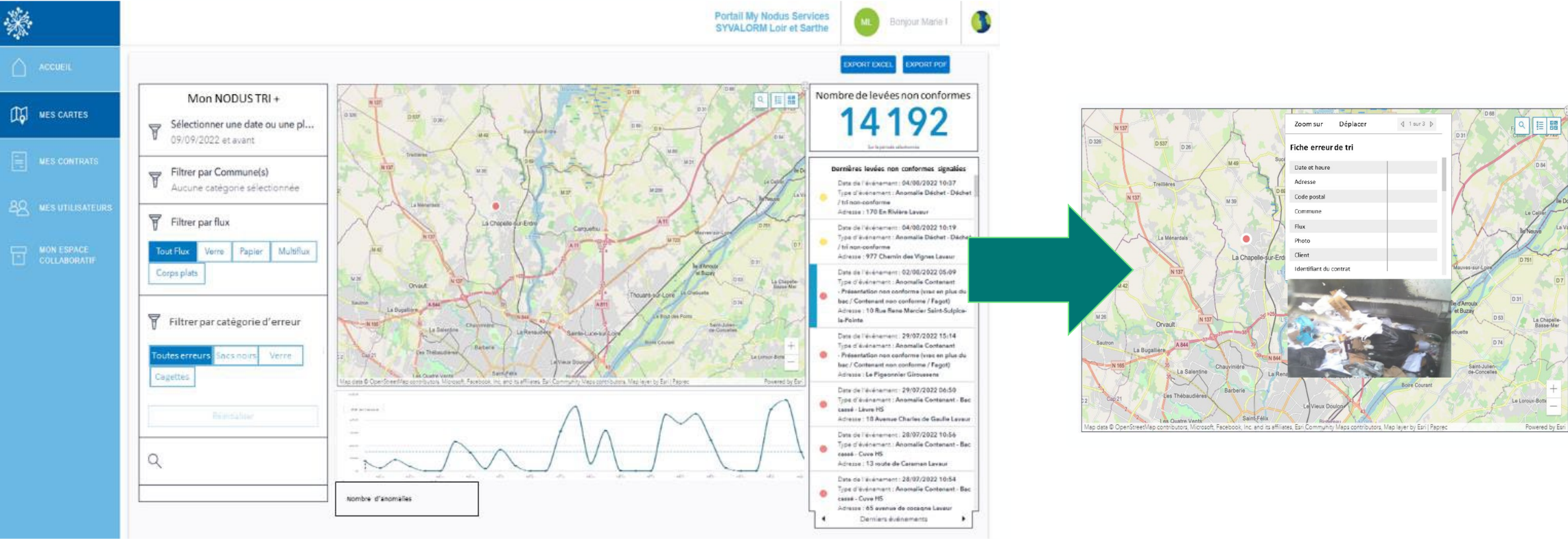
Emplacements des agents



Missions planifiées (181)

Client	Lieu	Agent	Début	Fin	
VILLE DE NIMES	Nîmes Ouest	MAKRANI - Mustapha	00h00	00h00	EFFECTUÉE
VILLE DE NIMES		DEBUSSCHERE - Thierry	04h00	11h00	EN COURS
OCEAN PRIVE	Dépôt Montfrin	BEAU - Alain	04h00	12h45	VALIDÉE
VILLE DE NIMES	Nîmes Est	ABBOUB - Abdelkader	04h00	12h00	EN COURS
VILLE DE NIMES	Nîmes Est	EL ATASSI - Hassane	04h00	12h00	EFFECTUÉE
COLLECTE PARTICULIERE		EL MIMOUNI - Smaïn	04h00	11h00	À FAIRE
CCPG	Meynes	ALAMI - Morad	04h00	09h00	À FAIRE

Data restitution and KPIs



Automatic AI reporting: input errors reduced from 10% to 2%

Clients & Partners - France

Garbage collection and urban cleaning

Urban



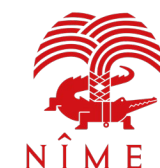
Waste



Highway service areas



Other clients



Partners



Clients and Partners – Quebec - Canada

French clients



Pilot projects signed



Partners



Our objective

We're looking to join projects on two fronts:

=> Collaborate with cities and territories interested in implementing the system and testing it out, as our priority is to have more pilot projects;

=> Collaborate with companies active in IoT/smart city / companies working on predictive analysis who would be interested in the data we can produce.



BY **OPEN**MOTION 

GAËL COBERT

President

+33 (0)4 65 96 29 33
gcobert@openmotion.fr

ROMAIN LEMARIÉ

Partner

+33 (0)4 65 96 29 33
rlemarie@openmotion.fr

GWENDAL COBERT

Partner

+1 438 992 8413
gwendal@openmotion.fr