



# MERTAY MACHINERY

Industry And Trade Limited

[www.mertaymakina.com](http://www.mertaymakina.com)



## About Us:

Established in 2007 in Bursa, Mertay Makina operates within a 2500 m2 facility, comprising Steel Construction and Machining divisions. Our team includes 40 Blue Collar Employees, 20 White Collar Employees, and 5 Management Staff. Specializing in Bespoke Machine Manufacturing, Precision Machining, Steel Construction, 3D Printing (SLS Technology), and Welded Manufacturing. We maintain our leading position in the sector by standing out with innovative engineering solutions.





## Corporate Mission

At Mertay Makina, we focus on the global business perspective and embrace the following core values:

- **Innovation:** Adapting to rapidly changing technology, we aim to provide customers with the latest technological products.
- **Customer Satisfaction:** To ensure the highest level of customer satisfaction, we offer quality products and services, prioritizing customer needs.
- **People-Centric Employment:** By providing a satisfying work environment for our employees, we enhance their commitment to their roles.
- **Safety and Ergonomics:** We prioritize the safety of our employees and customers by producing ergonomic solutions in compliance with health and safety standards.
- **Environmental Responsibility:** Embracing an environmentally friendly approach, we optimize our production processes in accordance with environmental requirements.
- **Ethical Values:** Upholding honesty and transparency, we adhere to ethical rules in our business practices and relationships.

At Mertay Makina, we maintain our pioneering position in the industry by offering personalized and high-quality solutions to our customers.





## Services and Products

- Manufacturing of Automotive Sector products
- Manufacturing of Food Sector products
- Manufacturing of Textile Sector products
- Manufacturing of Health Sector products
- Manufacturing of Science and Technology products
- Manufacturing of Defense Sector products



- Bespoke Machinery Manufacturing
- PLC Controlled Workstations
- Automation and Programming
- CMM 3D Measurement
- Conveyors and Assembly Lines
- PVD Coating and Metallization
- Transport Carts and Transport Crates
- CNC Machining
- Assembly Fixtures and Jigs
- Measurement Control Fixtures
- Plastic and Metal Molds
- Platforms, Steel Constructions, and Occupational Safety Structures
- 3D Printing with SLS Technology
- Manufacturing of Workstations and conveyors from Rexroth Bosch Aluminum Profiles and standard modules
- Integration of industrial machinery and equipment





## Machine Park

- 5 Axis CNC Machines
- 3 Axis CNC Machines
- CMM Measurement Machine
- SINTRATEC 3D SLS Printer
- PVD Metallization Machine
- Metal Sheet Forming Machine
- Metal Sheet Cutting Machine
- Aluminum Cutting Machine
- Vertical Milling Machine (for Plexiglass and Wood)
- TIG and MIG Welding Machines
- Gas Shielded Arc Welding Machines

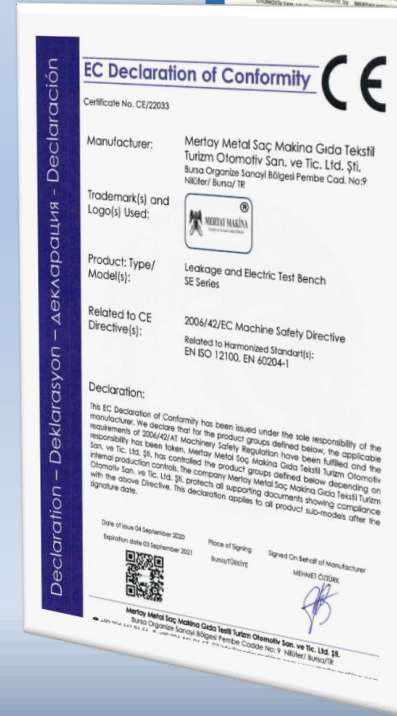






## Our Certificates

- ISO 9001:2015
- ISO 45001:2018
- ISO 14001:2015
- CE Certification for machines, assembly lines, workstations, and test stations designed and manufactured by Mertay Makina.





## 3D CAD/CAM DESIGNING :

- 10 Licenses of SolidWorks CAD
- 1 License of SolidWorks CAM
- 2 Licenses of Catia CAD
- 1 License of Catia CAM
- 1 License of Visi CAD/CAM
- 1 License of MasterCAM
- 1 License of Sintratec 3D Printer

**SOLIDWORKS**

VISI BY  **HEXAGON**

**CATIA** 

**AUTODESK<sup>®</sup>**  
**INVENTOR<sup>®</sup>**

**Mastercam<sup>®</sup>**





## **ELECTRIC – ELECTRONIC DEPARTMENT**

### **Electrical Panels – PLC/HMI**

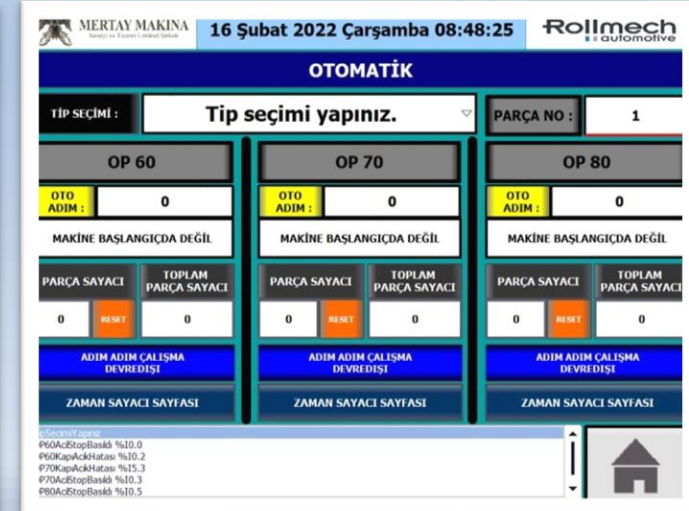
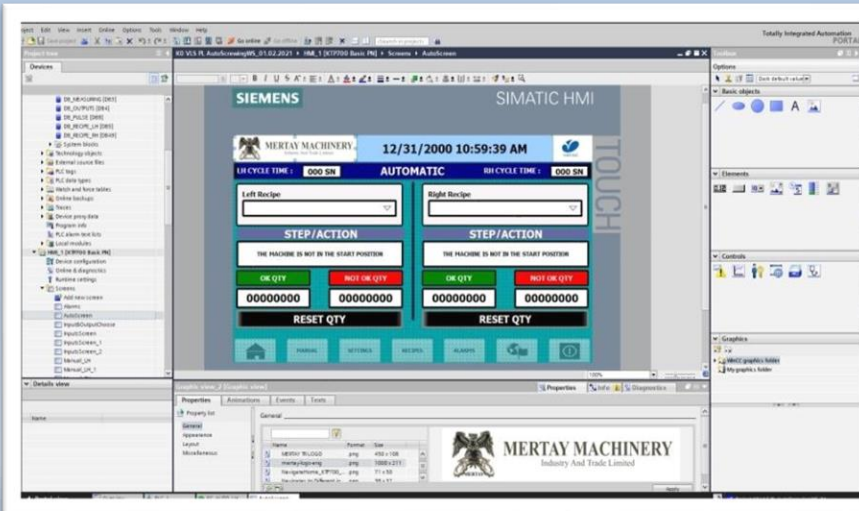
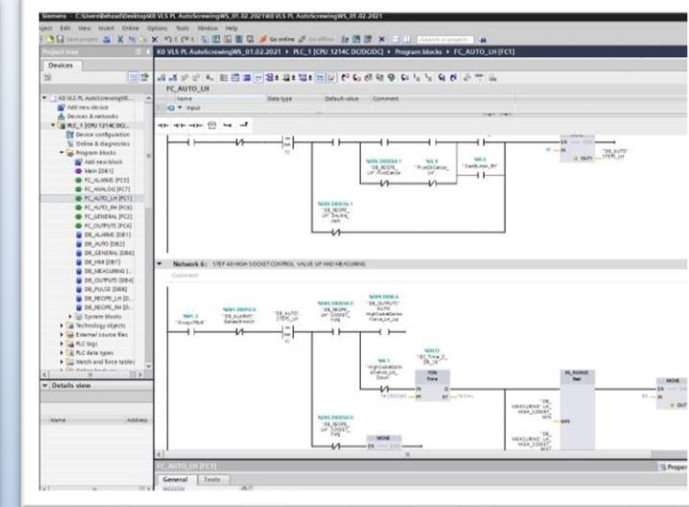
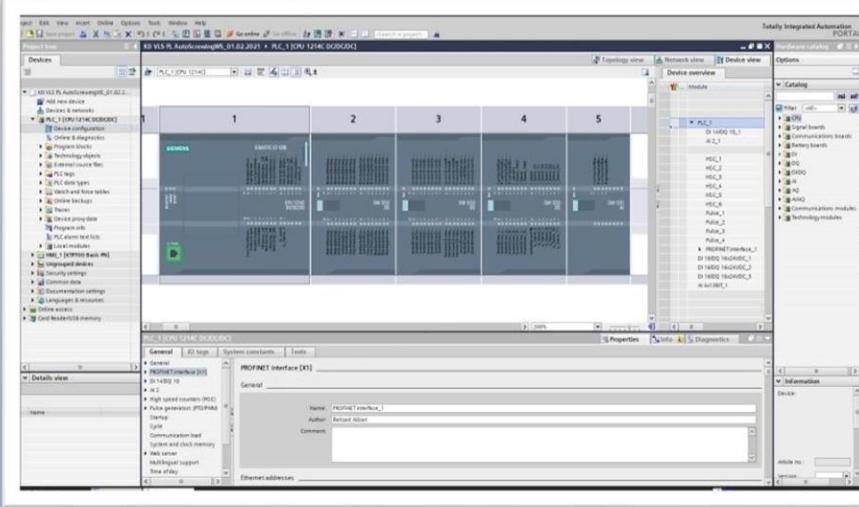
- At Mertay Metal Makina, our engineering and design team has extensive experience in creating customized traceability systems for various industries by integrating various technologies such as sensors, reading devices, cameras, and control devices. Our expertise lies in operational design and the organization of assembly and production lines, playing a critical role in achieving fully automated assembly or production lines. Additionally, we are known for our success in developing practical solutions that enable users to easily control and access data.





## PLC/HMI - TIA Portal – SCADA :

- At Mertay Metal Makina, our automation and programming team can design customized operator interface software panels for workstations and control and data acquisition (SCADA) systems for full assembly lines.
- Our team specializes in developing software solutions tailored to meet the unique needs of operators, ensuring effective and seamless control over the production process.
- These software panels not only meet specific workstation requirements but also provide control and data acquisition capabilities for the entire assembly line. Additionally, our team is adept at integrating and associating these software solutions with other infrastructures and software platforms. This streamlines workflow and enhances compatibility with the technologies present in your current operational environment.

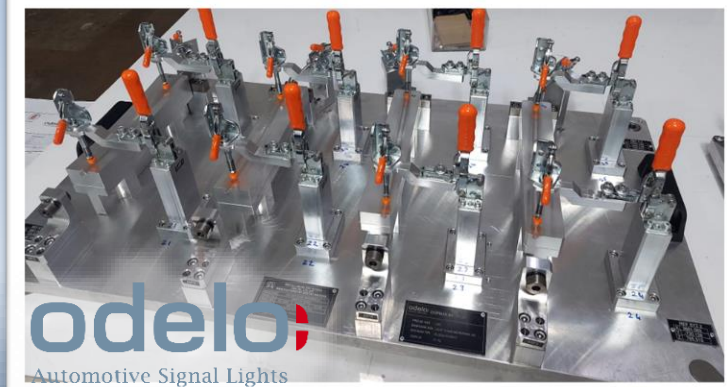




## Our Products

Mertay Metal Makina specializes in the manufacturing sector, focusing on Automotive Lighting Assembly Lines, Automotive Mirror Assembly Lines, Automotive Door Component Assembly Lines, PLC-controlled Ergonomic Workstations for Optimal Operator Efficiency, and Assembly Lines for Boiler Components.

We provide tailored solutions to meet customer needs across a wide range of industries, developing projects specific to their requirements and delivering quality services in specialized areas of expertise.





# Automatic Testing and Assembly Machines

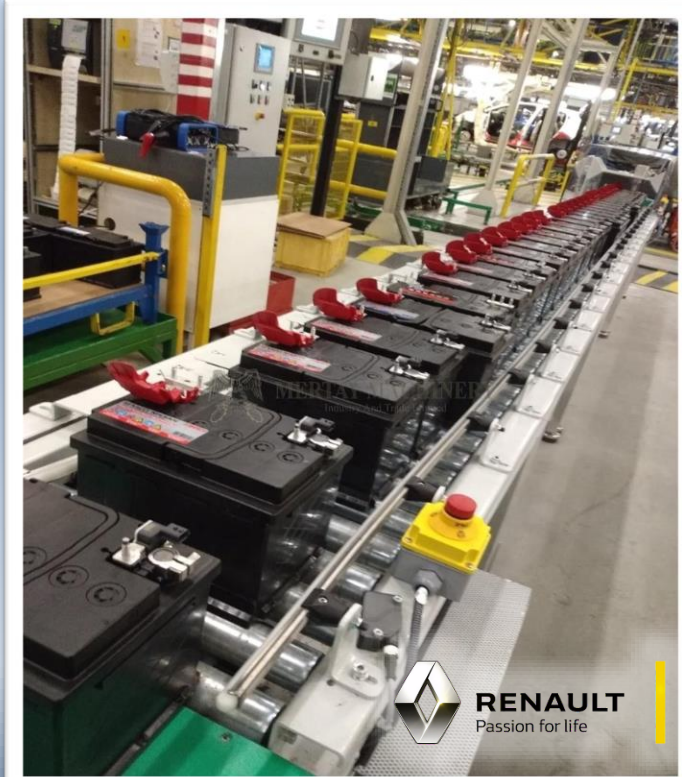
- **Semi or Fully Automatic Assembly Lines**
  - Efficiency and speed in assembly processes.
  - Scalable and flexible solutions tailored to customer needs.
- **Part Counting and Sorting Lines**
  - Accurate part counting and sorting.
  - Automatic feeding and distribution systems.
- **System Integration and Development**
  - Integration solutions compatible with existing systems.
  - Process optimization and performance improvements.





## Conveyors and Assembly Lines

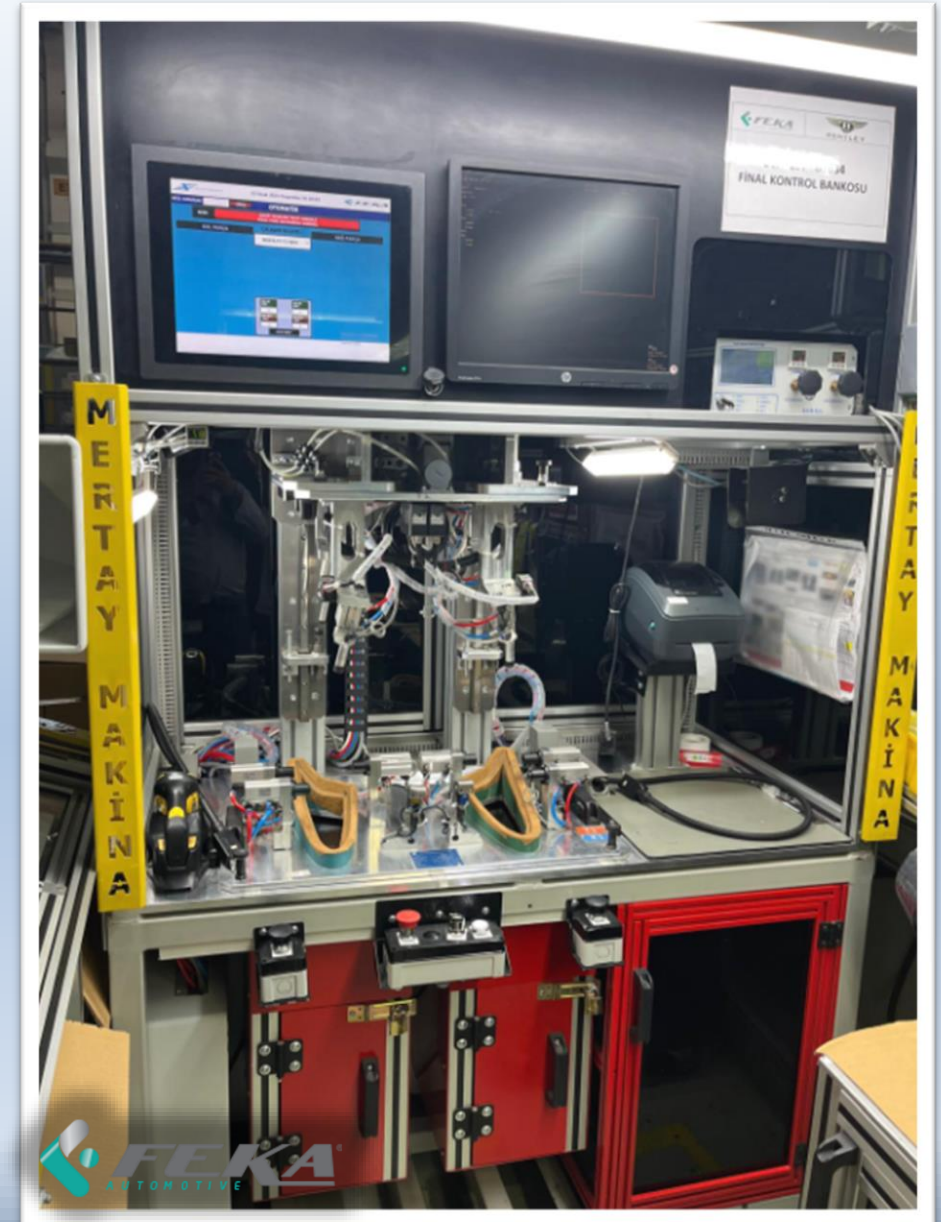
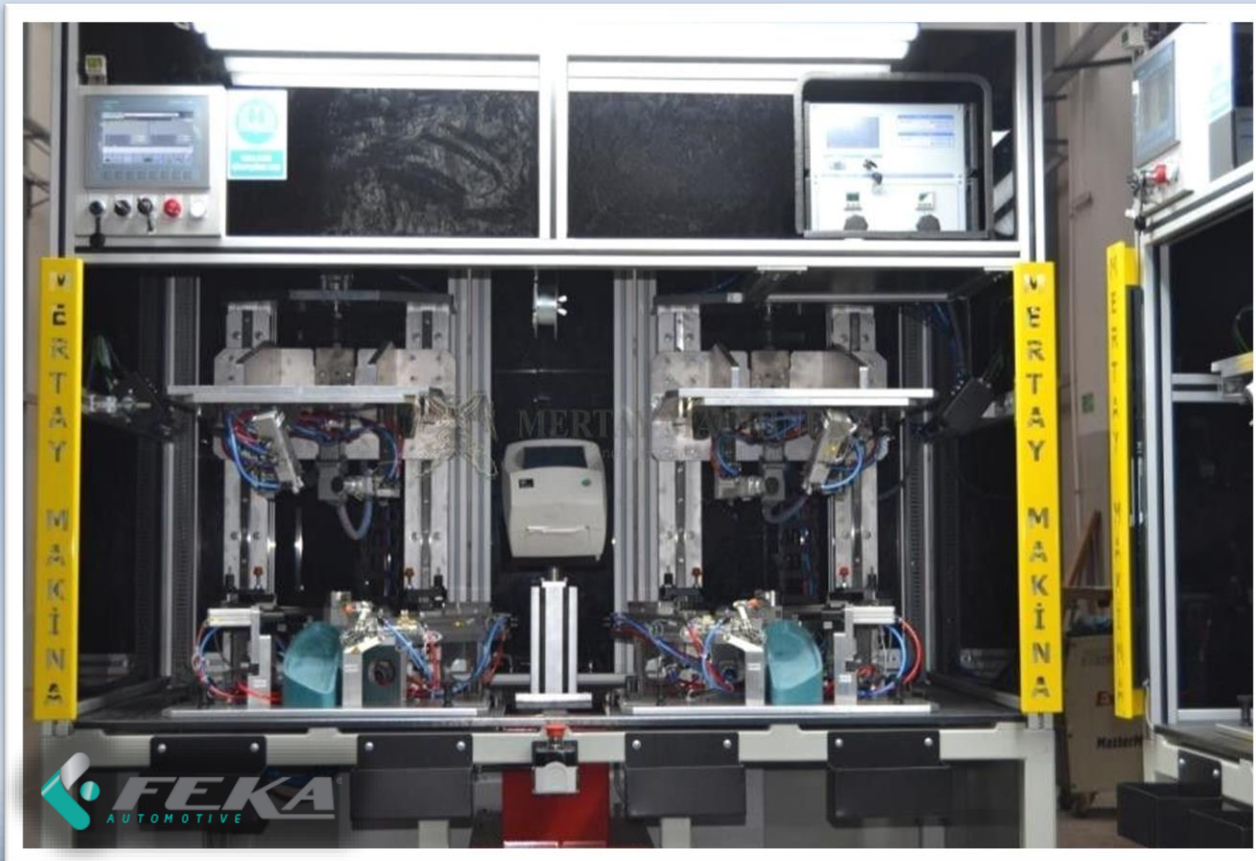
- PVC conveyors,
- Roller conveyors,
- Free system (Gravity) conveyors,
- Chain system conveyors,
- Conveyors with traceability control, speed control, and PLC modes equipped with code reader systems are manufactured.





## Assembly Line Testing Machines and Quality Control Machines (End of Line):

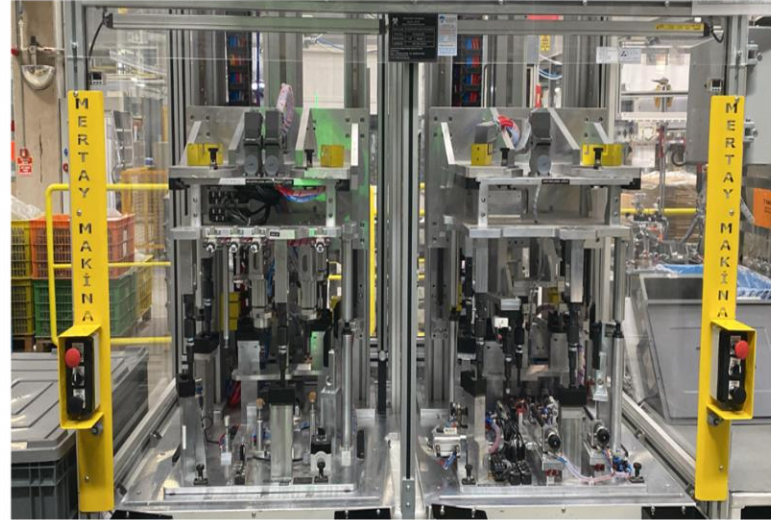
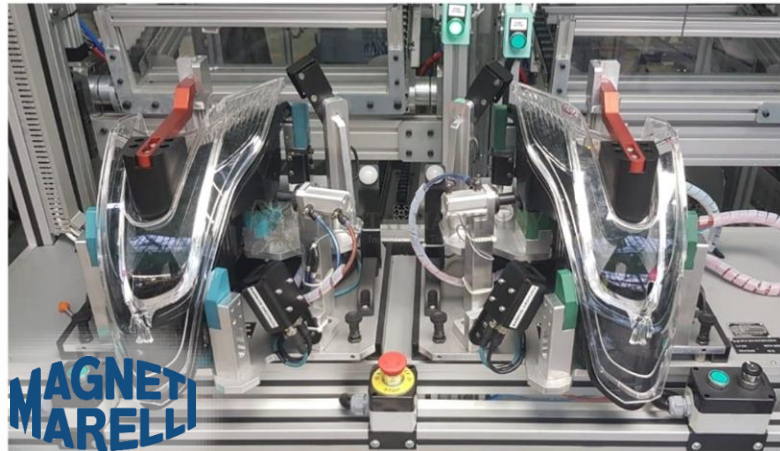
Automotive lighting Photometric Test Machines and Workstations, Regloscope and optical targeting test and adjustment units, leak detection and quality control modules.





## Fixtures and Jigs

Mertay Makina designs fixtures and apparatus with a focus on operator ergonomics and safety, tailored to the application area. These systems are equipped with various technological components, such as PLC-configured Poka-yoke mechanisms, preventive error-checking sequences, DMC readers, vision sensors, cameras, and thermal and optical control devices. This ensures high safety standards while minimizing the risks of defective production.





## Bespoke Machinery

- Custom design and functionality according to special machine requirements
- Integration of standard equipment
- Traceability and automation upon customized requirements





## PVD Metallization Planets and Coating Services:

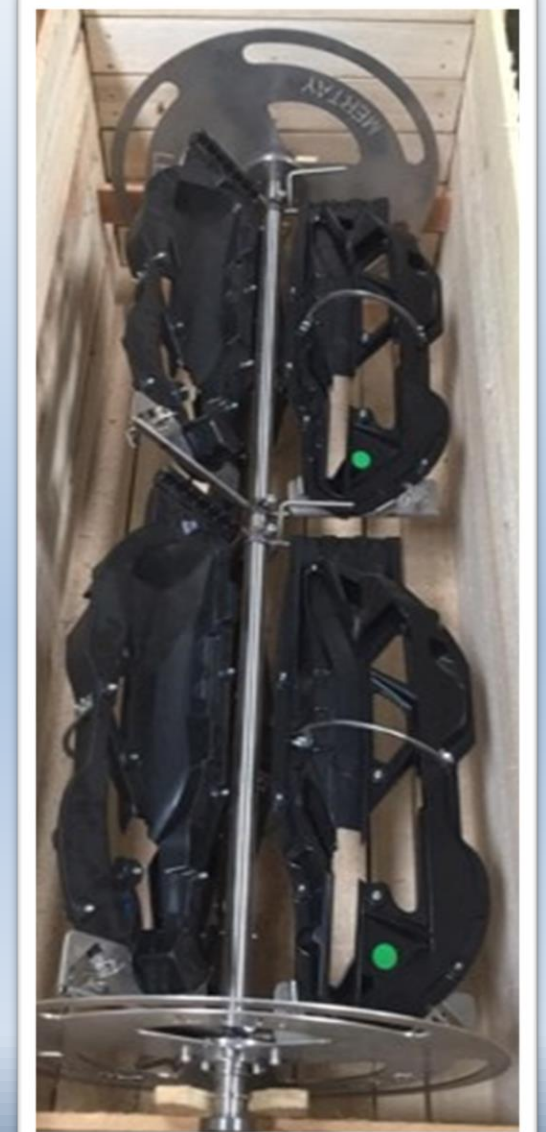
- Metallization Planets with Full and Partial Aluminum Coating for Automotive Lighting Headlamps, Tail Lamps, and Signal lights.
- Customized racks include thermoformed masks, carbon fiber masks, sheet metal masks, and composite plastic masks to cover non-metallized areas.
- Frames are equipped with spring locking systems for easy and quick loading and unloading of reflectors.





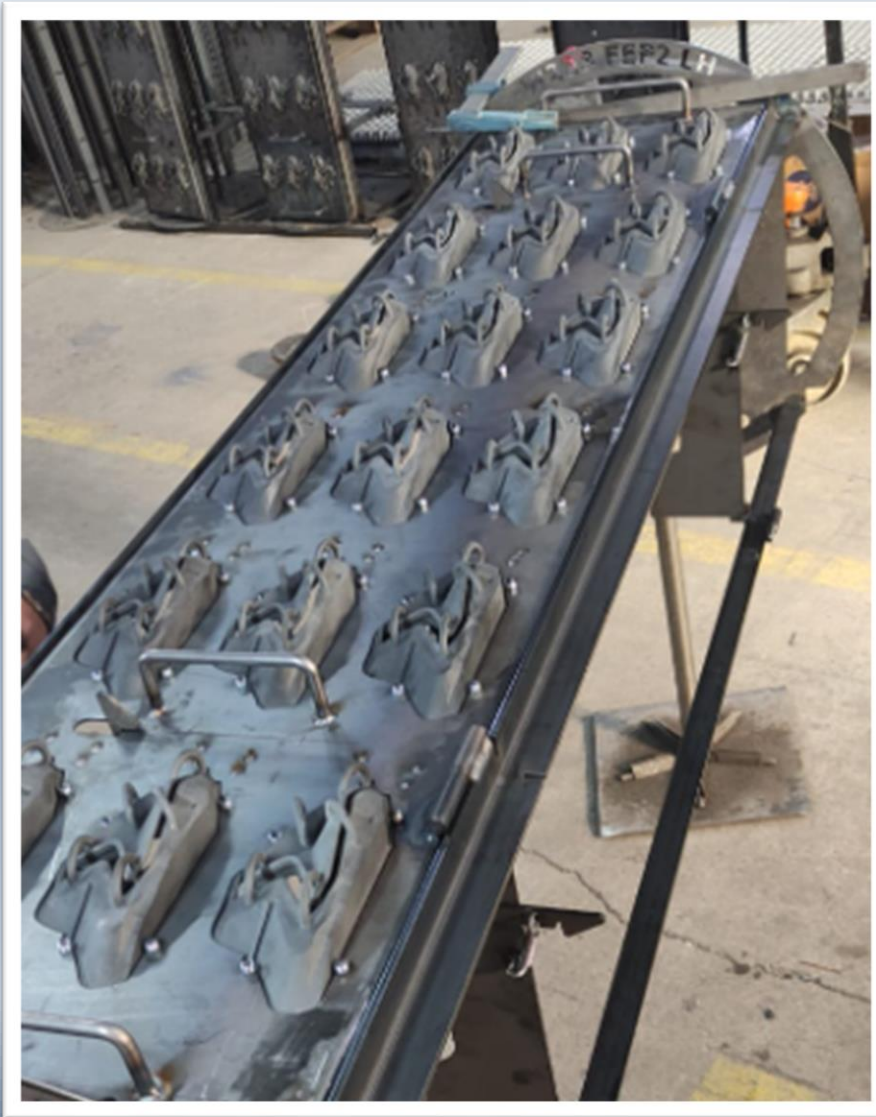
## PVD Metallization Planets and Coating Services:

- Manufacturing of masking parts related to Multi Jet Fusion 3D Printing, SLS 3D Printing, and Silicone Mold Prototyping.
- Mertay designs and manufactures these metallization racks for various types of PVD aluminum coating vacuum chambers, catering to every size, format, and masking requirement.





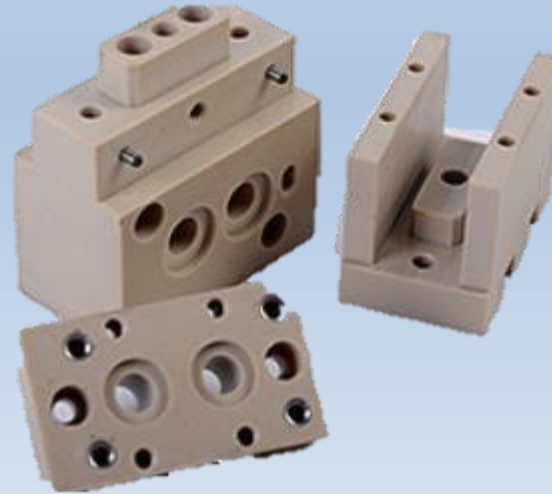
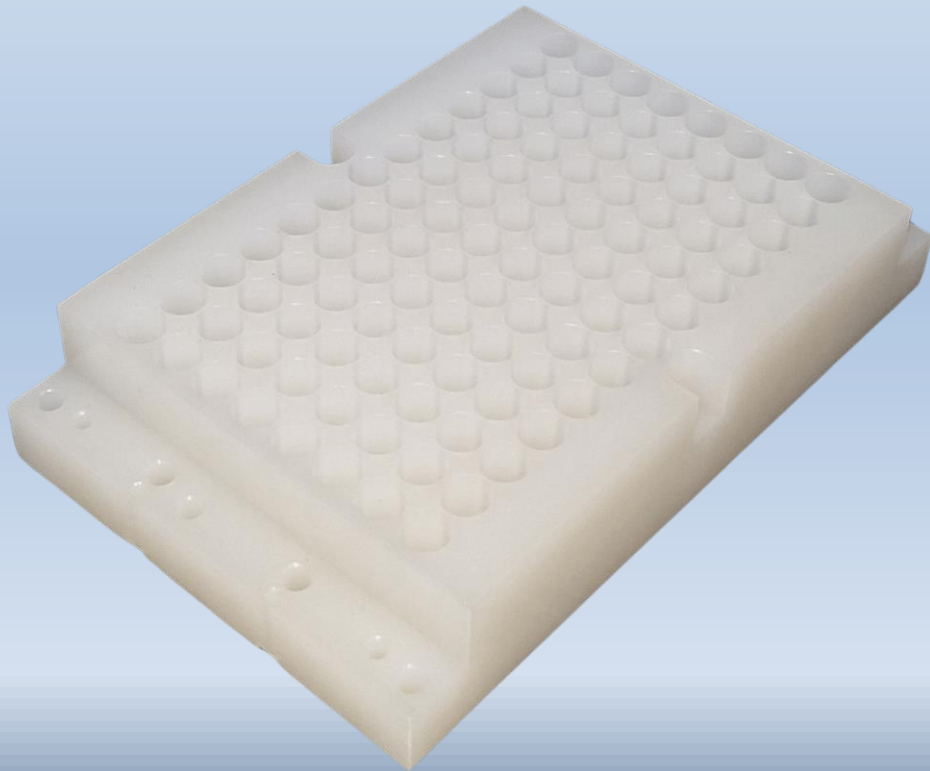
## PVD Metallization Planets and Coating Services:





## Our Products

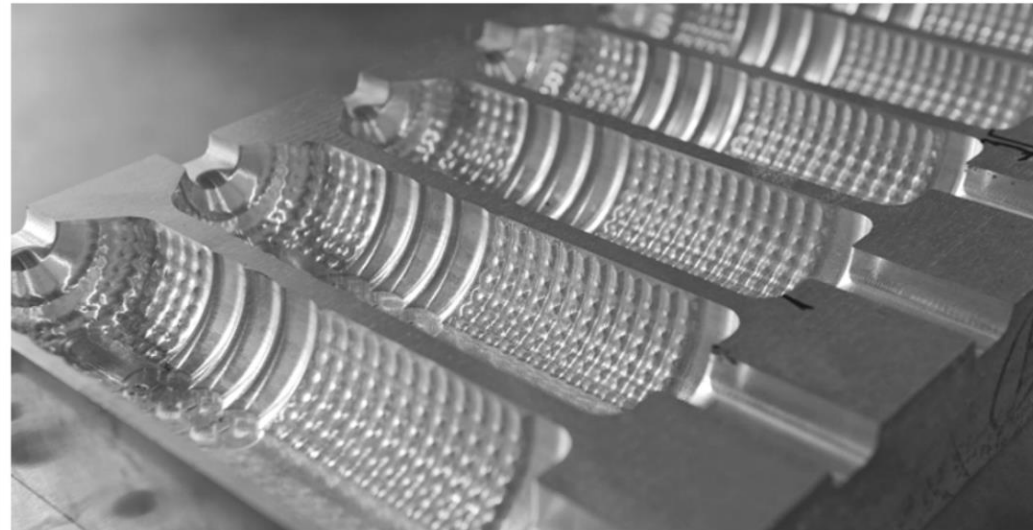
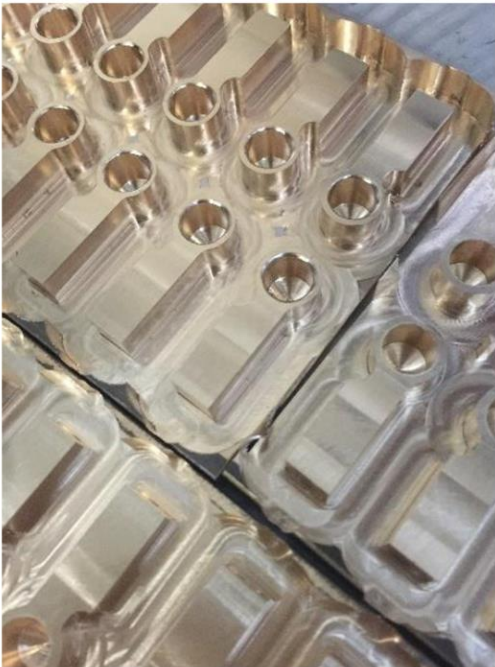
Precision plastic and metal alloy parts processed with CNC machining, featuring 0.01 mm processing tolerances, are utilized in various applications, including robotic part positioning templates, sublayers, and platforms.





## Injection, Press, Casting, and Composite Casting Molds

- CNC Part Materials
- PTFE - PVDF - POM-C – PEEK - PA – PE - PP
- Necuron Casting Epoxies and PU varieties
- Various types of Aluminum
- Stainless Steel Alloys
- Copper – Brass and more.





## Manufacturing of Platforms, Base Structures, and Safety Structures:

- Transport Carts and Carriers
- Sliding Rack Systems
- Ergonomic Workbenches and Tables
- Mold Transport Carts
- Steel Transport Platforms and Stairs
- Aluminum and Steel Fabrications
- Stainless Steel Tables and Tray Fabrications
- Mechanical Installation and Fire Line Fabrications

**rexroth**  
A Bosch Company





**rexroth**  
A Bosch Company





- Transport Carts And Carriers
- Sliding Rack Systems
- Customized Structures
- Waste Control And Gathering



**BOSCH**





- Transport Carts And Carriers
- Sliding Rack Systems
- Customized Structures
- Waste Control And Gathering

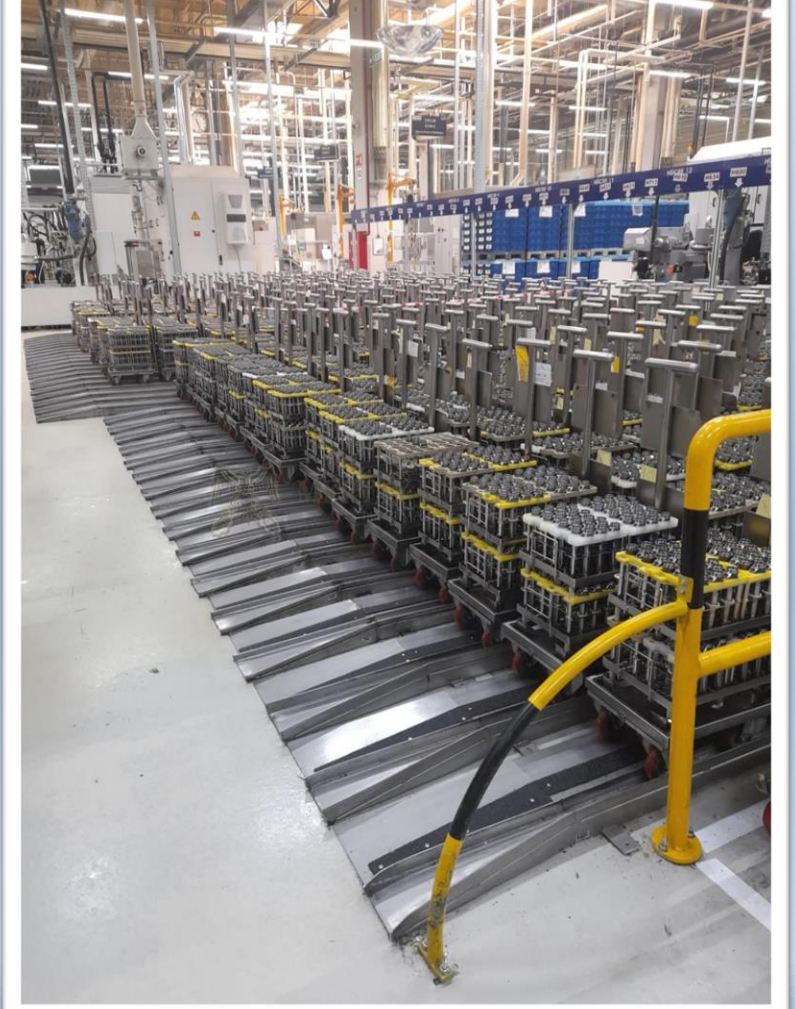


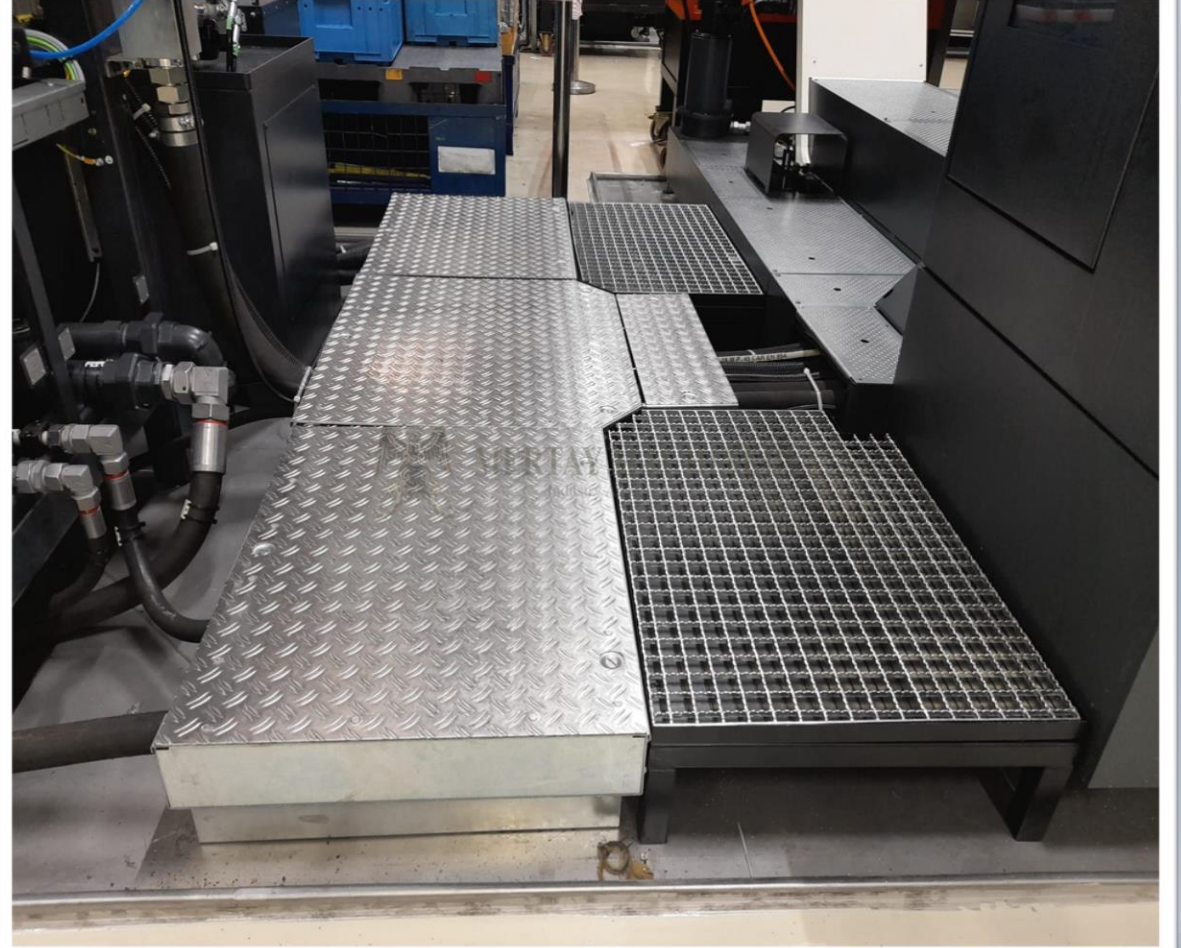
**BOSCH**





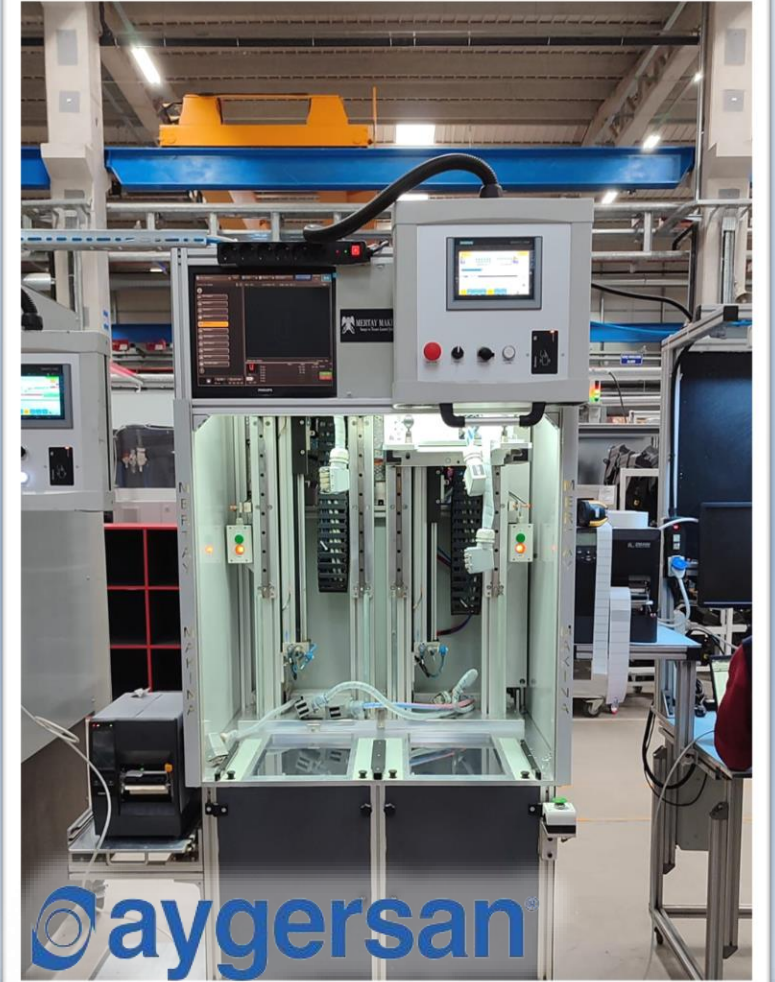
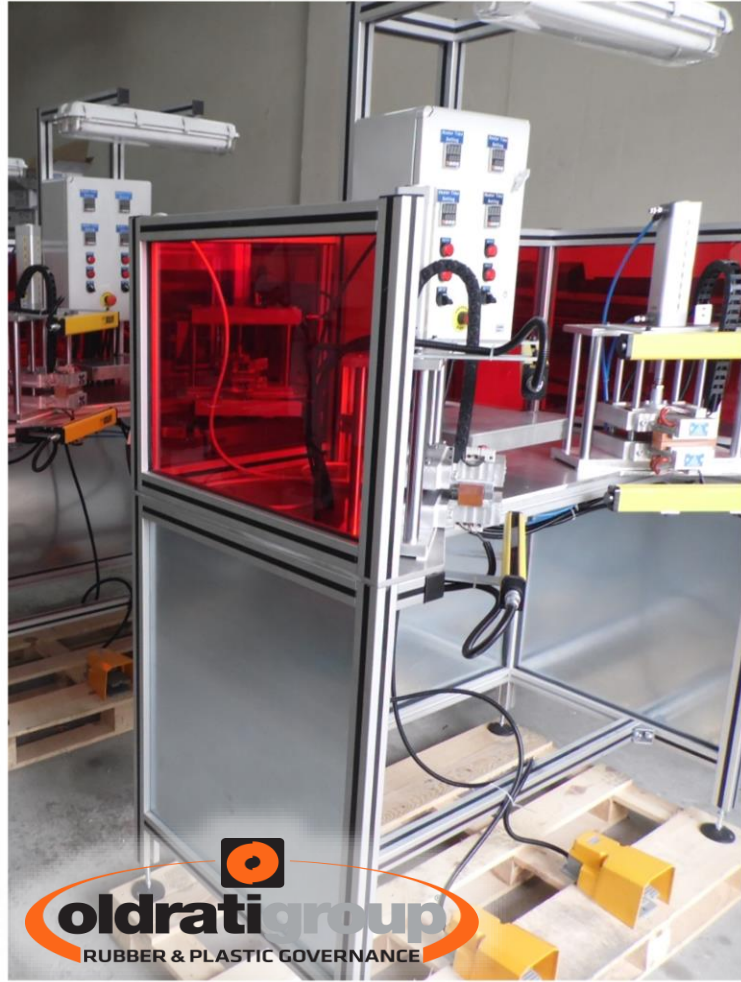
**BOSCH**







## Bespoke Machine







### Our Work Partners around the Globe

Tesla Gigafactory Berlin-Brandenburg

- **Germany**

Robert Bosch

- **Germany**
- **Mexico**

Rudolf Nieberding GmbH

- **Germany**

Hyundai Motorsport GmbH

- **Germany**

CERN

- **Switzerland**
- **France**

Irico Gualchierani Handling

- **Italy**

Sekiso

- **Japan**

Plastic Omnium Lightning

- **Morocco**
- **Poland**
- **Czechia**

Odelo Automotive Lighting

- **Slovenia**
- **Bulgaria**
- **China**
- **Germany**

Feka Automotive Lighting

- **Serbia**

Magneti Marelli Automotive

- **Morocco**

Sütaş Food and Beverage Sector  
HQ

- **North Macedonia**

ELBA Lighting Technology

- **Romania**



## Our References:



**BOSCH**



**RENAULT**  
Passion for life









**Fabrika : (Since-2007)**

**Mertay Makina Ltd. Şti.**

Fethiye OSB, Pembe Cad. No:13  
TR-16140 Nilufer/ Bursa, Türkiye

[+90 \(224\) 441 96 56](tel:+902244419656)

[info@mertaymakina.com](mailto:info@mertaymakina.com)





**THANK YOU**



**MERTAY MACHINERY**

Industry And Trade Limited

[www.mertaymakina.com](http://www.mertaymakina.com)