

Universities

TU/e

1

Eindhoven University of Technology (TU/e)

The Eindhoven University of Technology, also known as TU/e, is a research university specializing in engineering science & technology. TU/e uses innovative educational approaches to help students become 'future proof engineers.'

TU/e offers bachelor's with fifteen different majors and many master's programs in the fields of Artificial Intelligence, Engineering & Health, Humans and Technology, Smart Cities, Smart Mobility, and Sustainable Energy.

www.tue.nl/en

2

Fontys

As one of the Netherlands' largest universities of applied sciences, Fontys is home to students of over 100 nationalities, with campuses in Eindhoven, Tilburg, and Venlo. Our education is closely connected to practical research, where students, lecturers, and researchers collaborate with industry professionals to bring innovation to the field and tackle complex societal issues.

Fontys offers international bachelor and master programmes in various fields: Arts, Allied Health Professions, Business, Economics and Management, ICT, Engineering, and Logistics.

www.fontys.edu

3

Tilburg University

Tilburg University is a public research university known for its high-quality education, social orientation, and strong campus feeling. Students at Tilburg University are educated to become knowledgeable, self-aware, and engaged academics, who understand society and want to play a significant role in it.

Tilburg University offers international study options in tech & IT with programmers such as BSc Cognitive Science and Artificial Intelligence, MSc Cognitive Science and Artificial Intelligence, BSc Data Science, MSc Data Science and Society, MSc Data Science and Entrepreneurship, BSc Econometrics and Operations Research.

www.tilburguniversity.edu

4

Avans

At Avans University of Applied Sciences you are expected to be all in. You keep pushing yourself to be the best you can be and surprise yourself with what you are capable of. Avans' international bachelor programmes center around engineering, environmental science, international business and finance, and offer Master programmes in Fine Art and Design.

The study programmes focus on solving real life issues for companies and organizations, helping you to kickstart your international career.

www.avans.nl/international

Home of Pioneers Map



BRAINPORT EINDHOVEN

Campuses

5

Automotive Campus

The automotive campus in Helmond is the place for turning automotive technology and smart and green mobility solutions into business. It offers an attractive learning and working environment, state-of-the-art technological (test) facilities and flexible accommodation concepts.

www.automotivecampus.com

6

BIC Campus

Brainport Industries Campus (BIC) is the face of the high-tech manufacturing industry. An international campus in the heart of Brainport Eindhoven where top technology, education, government and high-quality facilities come together under one roof.

7

High Tech Campus

High Tech Campus Eindhoven, the smartest square km in Europe, is an ecosystem of 260 high tech companies. It's home to more than 12,500 innovators, researchers, and engineers that create the technologies and business of tomorrow.

9

TU/e Campus

The TU/e campus is a 'technical hot spot' where students, staff, academics, and scientists from every discipline and from all over the world can get together and work together.

8

Strijp

Strijp-S/T is the place in Brainport Eindhoven where creative talent, design, and innovation meet each other. The former Philips industrial plant has grown into a vibrant urban area that offers a unique mix of working, living, learning and all kinds of leisure facilities that lead to casual meetings.

Tech markets

Energy

- TU/e is home to one of the **world's largest outdoor research labs for building integrated solar energy solutions.**
- Startup RIFT is building the **world's first iron fuel installation heating 500 hundred households without emitting CO2.** The first major test of startup RIFT was successful: 500 houses in Helmond, The Netherlands, heated carbon-neutrally.

Food

- In food processing, the regions of Den Bosch and Brainport Eindhoven **employ around 16.720 people**, with around 2.470 people employed in food and beverage processing machinery manufacturing.
- The region is home to a variety of large corporates:** Bavaria Brewery, Vanderlande, and Marel, and is home to the headquarters of two of the largest Dutch supermarket chains – Jumbo and Sligro.

Health

- More than 20% of Dutch MedTech companies** are in the region where Brainport Eindhoven is located.
- The large presence of the medical technology manufacturing industry **is an important asset for the region**, allowing for quickly made prototypes or small series to be produced.

Mobility

- There are three large consortia of **more than 60 Dutch companies in the mobility sector**, together with the government at Brainport Eindhoven.
- Brainport Eindhoven is **investing more than 120 million euros** to realize innovative technological breakthroughs in electrification, hydrogen applications, and future-oriented digital infrastructure in mobility.

Battery

- Eindhoven was **the first city with a fully electric public transport bus fleet.**
- Brainport Eindhoven hosts a high density of next-generation battery technology organizations with 8 companies and 3 knowledge institutes, making it **an important battery hub for Europe.**

Key technologies

Advanced Manufacturing

- The large amount of successful High-Tech Systems & Materials companies in the region (+5,000) form a **strong ecosystem for additive manufacturing.**
- With **more than 70 AM suppliers**, Brainport Eindhoven's Additive Manufacturing Hub offers a unique concentration of suppliers, expertise and technologies in the field.

Artificial Intelligence

- Brainport Eindhoven is **home to one of the world's largest and most advanced research institutes in the field of artificial intelligence**, Eindhoven AI Systems Institute (EAIISI) at TU/e.
- Every year, the AI-hub Brainport hosts the AI Summit Brainport, **bringing together experts and practitioners in the field of artificial intelligence** to share their knowledge and expertise.

Integrated Photonics

- The Netherlands is an absolute frontrunner in the photonics field, with **an industry of about 160 companies in the country.**
- In the field of microelectronics **Brainport Eindhoven has proven its ability to convert a complete ecosystem** - with companies like ASML, ASMI, BEI and NXP

Digital Technologies

- Brainport Eindhoven is **home to some of the world's most sophisticated (embedded) software.**
- The region proudly **creates software that drives many innovative and complex products the Dutch high-tech industry is known for** like NXP's chips for autonomous driving, ASML's lithography machines, Thermo Fisher Scientific's electron microscopes, and Philips' medical devices.

Micro- and nanoelectronics

- Philips laid the foundation for micro- and nano technology** with its many spin-offs such as ASML, NXP Semiconductors and FEI (Thermo Fisher Scientific).
- Brainport Eindhoven has a leading global position in the field of micro- and nano-electronics** with companies such as: ASML, NTS, Schunk Xycarb Technology, Sioux Technologies, TNO, Solliance, EFFECT Photonics.

Fun facts



- The birthplace of international conglomerate Philips
- Brainport Eindhoven is an innovative ecosystem comprised of over 5,000 tech and IT companies
- + 72,868 tech & IT professionals work in Brainport Eindhoven
- 2% of all patents worldwide originate from Brainport Eindhoven
- The name Brainport Eindhoven was coined in 1997
- "The next Silicon Valley could well be in Eindhoven" – Fortune Magazine
- Over 40% of all patent applications from the Netherlands come from Brainport Eindhoven



Organisations & Resources



10 Brainport

Brainport Eindhoven is the website for everything about "The Home of Pioneers." Here you can find an up to date job portal with English-speaking IT and tech jobs, news about the region, universities and companies, and resources for those curious about life in this innovative technology region.

www.brainporteindhoven.com/int/

11 Expat spouses initiative

Expat Spouses Initiative (ESI) connects internationals, especially spouses of international knowledge workers, to local professional opportunities and accelerates them toward the Dutch Labor market in a community-driven way. ESI provides services such as events, workshops, and mentorship to connect and empower those settling in the Brainport Eindhoven region.

www.expatspousesinitiative.org

12 HECS

Holland Expat Center South is a nonprofit governmental agency. It is a joint initiative of the participating municipalities, the Immigration and Naturalisation Services (IND), Brainport Development, and the province of Noord-Brabant. HECS helps expats with all kinds of services and information such as settling in, formalities, housing, taxation, etc., and its services are free of charge.

www.hollandexpatcenter.com/en/

13 Regio Radar Eindhoven

RegioRadar is THE source for cultural, leisure, and events in the Brainport Eindhoven region. Visitors can keep themselves updated with the many events and activities happening in the region, from national and regional holidays to nature activities and cultural and seasonal events for locals and visitors alike.

www.regioradareindhoven.nl/en/



Become a pioneer at Europe's most innovative tech region, Brainport Eindhoven

brainporteindhoven.com/int

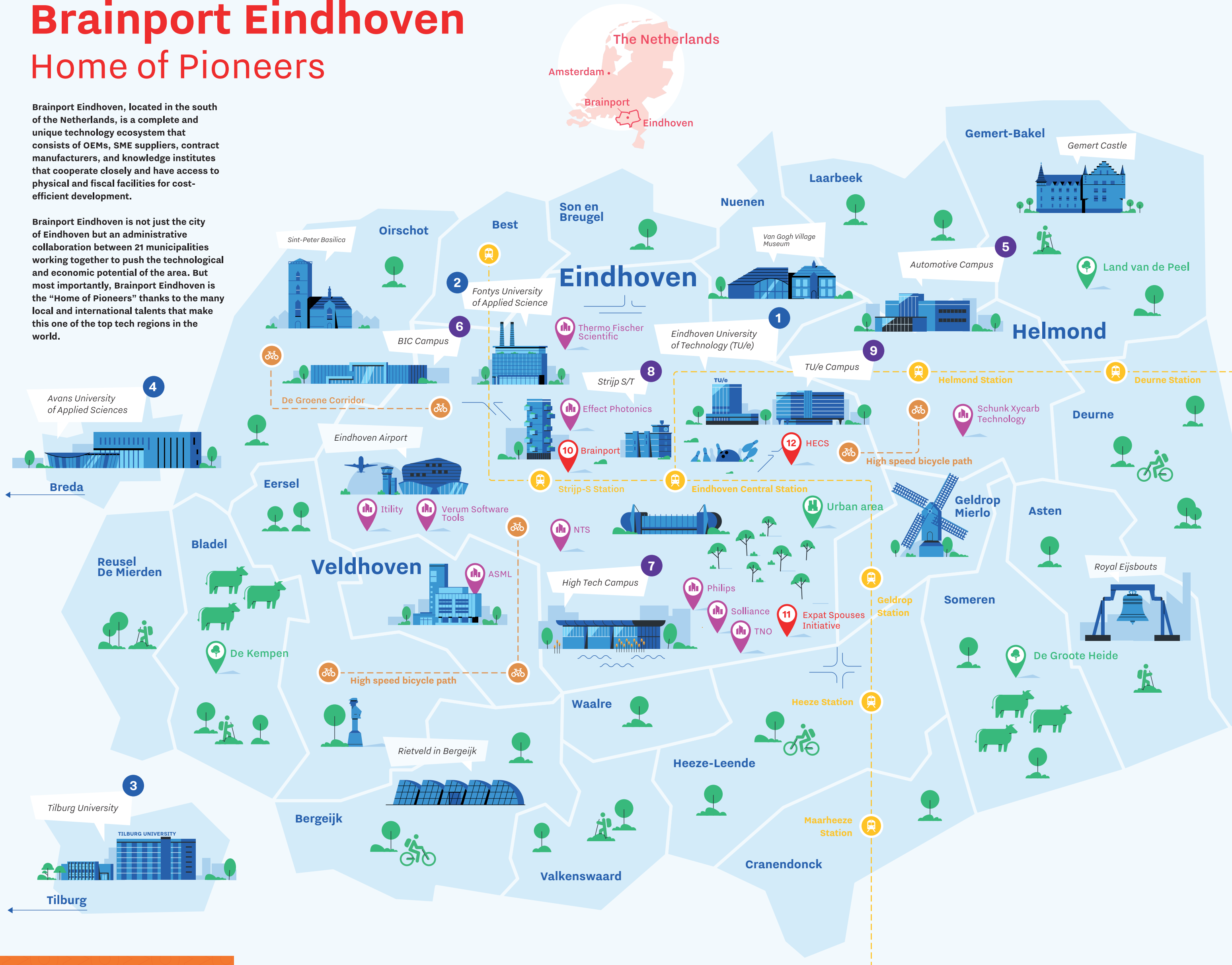


Brainport Eindhoven

Home of Pioneers

Brainport Eindhoven, located in the south of the Netherlands, is a complete and unique technology ecosystem that consists of OEMs, SME suppliers, contract manufacturers, and knowledge institutes that cooperate closely and have access to physical and fiscal facilities for cost-efficient development.

Brainport Eindhoven is not just the city of Eindhoven but an administrative collaboration between 21 municipalities working together to push the technological and economic potential of the area. But most importantly, Brainport Eindhoven is the “Home of Pioneers” thanks to the many local and international talents that make this one of the top tech regions in the world.



What's in it for you

- Excellent high-quality education
- A multicultural student community
- English-taught university programs
- Flexible, personal & innovative studies
- First-rate universities & universities of applied sciences

What makes us unique

- Technological & innovative region
- Monthly +3,000 English-speaking tech & IT jobs
- Opportunities to work in key technologies
- Career development & professional growth
- A well-connected hub at your fingertips

Nature & Urban areas



De Kempen

The Campine or De Kempen is a natural region in Brainport Eindhoven formed by the charming municipalities of Bergeijk, Eersel, Bladel, and Reusel – De Mierden. This area in the region is characterized by its rustic villages, forest, fen, and heath, next to exciting anecdotes and regional and border stories.



De Groote Heide

De Groote Heide is a unique cross-border area in the region covering Heeze-Leende, Valkenswaard, and Hamont-Achel. This area is characterized by heathlands interrupted by woods, meadows, and fields. With the various villages and towns around, you sometimes feel that you are standing with one foot in a village and the other in the moorland.



Land van de Peel

Land van de Peel is comprised by the municipalities of Gemert-Bakel, Helmond, Been en de Donk, Deurne, Asten, and Someren. Charming landmarks, castles, a national park, heathlands, forests, and a rich cultural history characterize this area.



Urban area

Stedelijk gebied or the urban area of Brainport Eindhoven comprises the municipalities of Son en Breugel, Eindhoven, Nuenen, Mierlo, Geldrop, Waalre, Veldhoven, Oirschot, and Best. As its name says, this area is famous for its industrial feeling and a big degree of urbanization. You can find urban parks, museums, nightlife, theatre, and music here.

Special events



Carnival



Carnival was originally a Catholic celebration. It is celebrated in the three days before Ash Wednesday. Traditionally, the party lasts from Sunday to Tuesday evening, but in North Brabant, it lasts for a whole week. Prepare for a week full of costumes, Dutch music, beer, and fun energy.

Glow



Glow in Eindhoven is one of the world's most visited light art festivals. This free light festival transforms Eindhoven for a week in November into an open museum with artistic light installations with the touch of tech that characterizes Brainport Eindhoven.

Dutch Design Week



Dutch Design Week is Northern Europe's largest annual design event, hosted in Eindhoven in October. It presents work and concepts from more than 2,600 designers to more than 355,000 visitors from home and abroad.

King's Day



King's Day (April 27th) is when everyone in the Netherlands parties to celebrate the birthday of the King. The region gets covered in orange, the streets become a huge flea market, and parties are on every corner.

