

CorpStage Pte Ltd
Singapore

2025

CorpStage ESG 360TM

From Compliance to Competitive Advantage

www.corpstage.com

esg@corpstage.com
+1 650-924-9293



Corp
Stage

Sustainability meets intelligence



CorpStage

Empowering Sustainable Business Transformation

In today's fast evolving regulatory and stakeholder environment, ESG is no longer optional **it's foundational**. The CorpStage ESG 360™ platform enables organizations to move beyond fragmented reporting and manual processes to a fully integrated, intelligent sustainability solution.

Designed for businesses of all sizes and across all sectors, CorpStage ESG 360™ empowers your teams to achieve ESG compliance, enhance stakeholder trust, and unlock new growth opportunities, **all from a single, intuitive platform**.

CorpStage ESG 360™ helps you:

- Streamline ESG reporting and disclosures
- Improve regulatory compliance (ISSB, SASB, CSRD, CDP, GRI and more)
- Engage stakeholders with transparency and confidence
- Transform ESG data into actionable insights

One Platform, Infinite ESG Possibilities

CorpStage ESG 360™ brings together every critical ESG component – **reporting, training, audits, compliance tracking, materiality assessments** – into one unified system. No more spreadsheets. No more siloed systems. Just real ESG performance, delivered.

Key Functional Pillars:

- ESG Reporting & Disclosure
- Automated Data Collection
- Stakeholder & Materiality Analysis
- Compliance Monitoring
- KPI Tracking & Benchmarking
- Internal Workflow Management

Security, Governance & Scalability

Enterprise-Grade, Yet Flexible

CorpStage ESG 360™ is architected to meet the demands of global organizations and compliance sensitive sectors.



10 Key Features

Built for the Complexity of ESG Designed for Simplicity

01 Centralized ESG Reporting Dashboard

Get a unified view of all ESG indicators across departments, locations, and business units.

02 Multi-Framework ESG Report Generator

Instantly generate reports aligned with leading frameworks such as ISSB, CSRD, SASB, GRI, CDP etc.

03 Intelligent Materiality Assessment Tool

Get a unified view of all ESG indicators across departments, locations, and business units.

04 ESG Compliance Tracker & Alerts

Stay ahead of deadlines with regulatory calendars, jurisdiction-specific compliance updates, and task alerts.

05 Enterprise-Grade Security & Compliance Architecture

GDPR-compliant with encrypted data flows, role-based access, and full audit trail functionality enterprise ready from Day 1

06 Customizable ESG Workflows & Governance Structures

Design and manage ESG workflows with clearly assigned responsibilities, approval flows, and multi-level access control across departments

07 Supplier & Value Chain ESG Integration

Collect and manage ESG data from upstream/downstream partners to support Scope 3 emissions tracking and responsible sourcing.

08 ESG Program & Task Management Suite

Plan, assign, and monitor ESG initiatives, disclosures, and audits in one place with built-in progress tracking.

09 Impact Metrics & Benchmarking Tools

Set goals, track ESG KPIs, and compare progress against internal targets or external benchmarks.

10 Emissions & Carbon Accounting Module

Track Scope 1, 2, and 3 emissions and build customized emissions reduction roadmaps with full audit traceability

Solving Real ESG Challenges Faced by Fortune 500 Companies

At CorpStage, we've systematically analyzed the core ESG adoption challenges large companies face through independent research and industry reports, and we've engineered the CorpStage ESG 360™ platform to directly address these barriers

1. Overcoming Financial Barriers

Challenge:

ESG is often seen as costly, hard to scale, and difficult to justify financially.

Solution:

CorpStage ESG 360™ replaces multiple tools with one platform, automates multi framework reporting (ISSB, CSRD, CDP), and supports cross border compliance to cut costs and duplication.

2. Simplifying Environmental Complexity

Challenge:

Net zero transitions are technically and financially challenging, especially for Scope 3.

Solution:

Track Scope 1–3 emissions with full audit trails, build decarbonization roadmaps, and align goals with SDGs.

3. Tackling Social & Human Capital Pressures

Challenge:

Many companies struggle with DEI, fair labor, and stakeholder alignment.

Solution:

Monitor social KPIs (e.g., gender, wage parity), conduct stakeholder mapping, and ensure double materiality coverage.

4. Enhancing Governance & Accountability

Challenge:

ESG often lacks ownership and transparency, with complex reporting demands.

Solution:

Role based workflows define ownership, automate reports (GRI, ISSB, CDP, CSRD), and support private tracking.

5. Aligning Strategy & Bridging Talent Gaps

Challenge:

ESG misalignment at leadership level and lack of internal expertise

Solution:

Strategy-to-Execution tools link ESG goals to business KPIs; executive dashboards show ESG's business value

6. Meeting Investor & Market Expectations

Challenge:

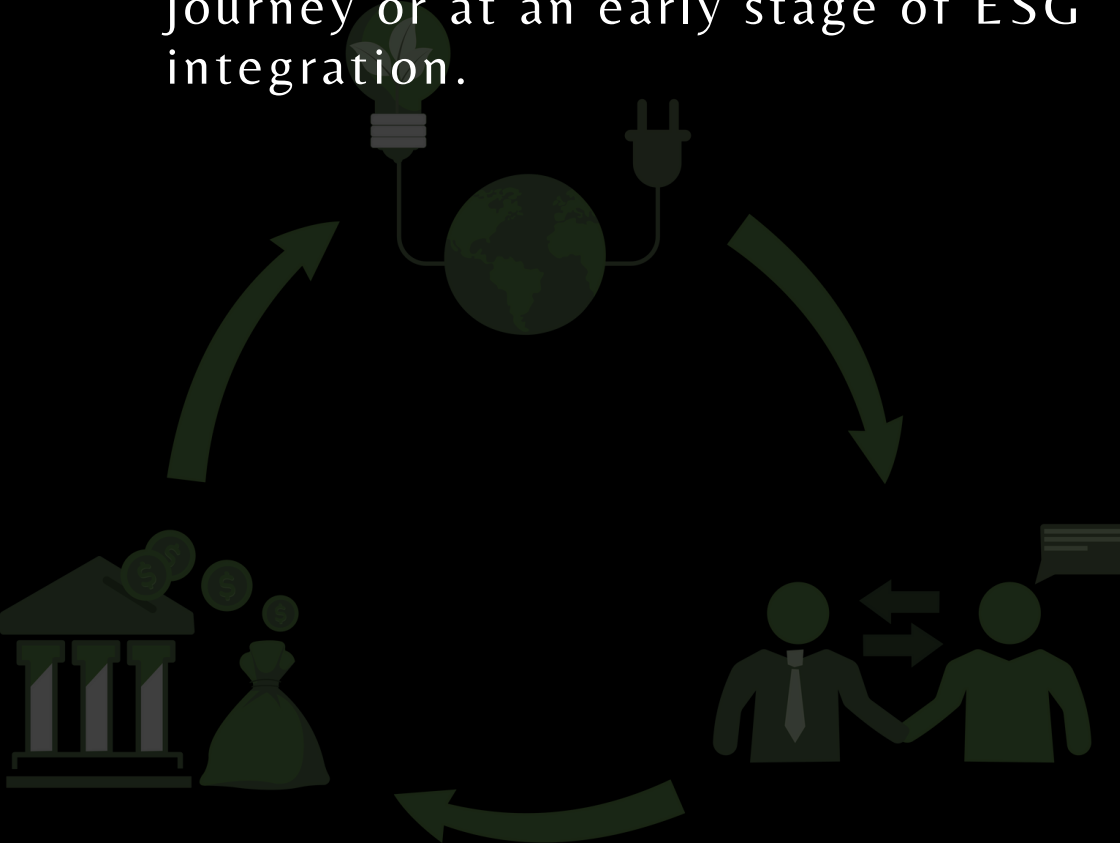
Investors demand credible, targeted ESG disclosures

Solution:

Use materiality heatmaps and audit ready tracking to align public commitments with internal progress.

CorpStage's 6Es Framework

The CorpStage 6Es Framework can provide a structured and practical roadmap tailored to your company, whether your company has taken significant steps towards your ESG journey or at an early stage of ESG integration.



The 6E Framework



esgEdge – Educate & Energise

Tackles the lack of ESG leadership and awareness by empowering senior leadership and key departments through capacity building workshops, ensuring top down commitment

esgEnsure – Assess & Evaluate

Fills the diagnostics gap by conducting thorough ESG gap analysis and baseline mapping using global benchmarks. Supports in conducting double materiality assessments.



esgEnable – Strategise & Execute

Develops an actionable ESG strategy with clear KPIs and governance structures. Supports the establishment of an ESG Steering Committee and defines oversight roles



esgEngage – Engage & Encourage

Builds stakeholder trust through engagement plans essential for social responsibility and DEI progress. Helps co-create CSR initiatives aligned with community needs



esgExtend – Collaborate & Connect

Connects you with industry peers and sustainability alliances to share knowledge and amplify impact. Facilitates cross-sector partnerships for resource sharing and innovation



esgElevate – Outcomes & Outputs

Establishes reporting protocols to ensure transparency and alignment with global standards. Prepares your company for future ESG disclosures, ratings, and investor communications



AI-Driven Innovation in CorpStage ESG 360™

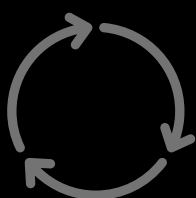
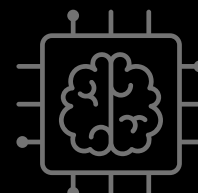
Integrating Advanced Intelligence to Future-Proof ESG Performance

At CorpStage, we are actively embedding AI-powered capabilities into the CorpStage ESG 360™ platform to transform how companies plan, measure, and deliver sustainability. These innovations are designed to address real enterprise needs ensuring transparency, speed, and strategic alignment.

Green AI – Powering Low Carbon ESG Intelligence

We are optimizing CorpStage ESG 360's compute efficiency and carbon footprint by:

- Deploying energy efficient data processing
- Enabling carbon aware compute scheduling for ESG analytics



Life Cycle Assessment (LCA) Automation

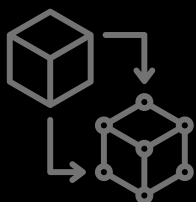
CorpStage will introduce AI based LCA modules that allow:

- Rapid product level environmental impact assessments
- Scope 3 emission estimation across supply chains
- Integration with procurement and manufacturing data streams

AI-Powered Greenwashing Detection

Our NLP engine (in development) will enable users to:

- Scan ESG disclosures for vague, unverifiable, or misleading claims
- Flag greenwashing risks before publication
- Benchmark language against credible reporting frameworks



ESG Digital Twin Capabilities

CorpStage ESG 360 is building a digital twin engine to allow companies to:

- Model emissions, energy use, and compliance across facilities
- Simulate ESG decisions and visualize trade-offs
- Test ROI of sustainability strategies before execution

Real-Time ESG Analytics Dashboard

We're expanding real-time capabilities to include:

- Live ESG KPI tracking (energy, emissions, DEI, supplier data)
- Automated alerts for compliance gaps or metric anomalies
- Predictive insights for performance optimization



We don't see AI as a feature, we see it as the engine powering the next evolution of ESG. These integrations will make CorpStage ESG 360 the most intelligent, adaptive, and audit-ready ESG platform on the market.

Let's talk about how
CorpStage ESG 360™
can support your transformation



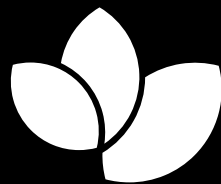
Contact us

esg@corpstage.com

+1 650-924-9293

Visit

www.corpstage.com



**Corp
Stage**

