



New European Bauhaus Facility - Matchmaking event 2025

## ADAPTATIONS LLC ADAPATIONS –NEW PROJECTS EUROPE (NGO)

- **Name:** NINA MILKOVA ILIEVA-architect, urbanist, educator
- **Organisation's name** ADAPTATIONS LLC & ADAPTATIONS – NEW EUROPE PROGETCS (NGO)
- - sustainable, inclusive and innovative architecture and urbanism . I have both LLC and NGO
- **Country** (Bulgaria)
- **Contact details** (ilievanina@gmail.com)
- **organisation website**  
(<https://architizer.com/firms/adaptations-llc/>)



New European Bauhaus Facility - Matchmaking event 2025

- Registered architect in Bulgaria/EU and NYC/USA
- Master in Architecture – UACEG-Sofia /Bulgaria
- Master in Architecture –II-University of Houston/USA
- Postgraduate in Urban Design and Policy- Southern California Institute of Architecture-Los Angeles, CA
- PHD candidate in sustainable and inclusive urban planning-UACEG
- Adjunct Assistant Professor and Visiting Faculty at New York Institute of Technology (NYIT), Parsons The New School for Design, and in Dessau, Berlin



EUROPE 40 UNDER 40

2014

NINA MILKOVA ILIEVA

BULGARIA



THE EUROPEAN CENTRE FOR ARCHITECTURE ART DESIGN AND URBAN STUDIES

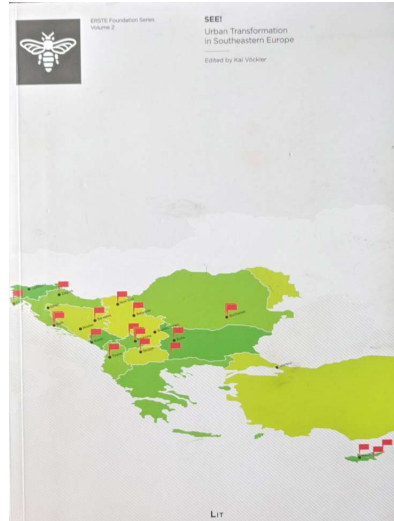
NINA MILKOVA ILIEVA



New European Bauhaus Facility - Matchmaking event 2025

## ADAPTATIONS

- ILIEVA, NINA Authors: "Sustainable Improvement of Romani Settlements in Bulgaria" Lyu Haifeng | Journal Name: The Collection of Global Forum on Human Settlements | Volume II | Publisher: China Environmental Publishing Group 2022
- "Sustainable Improvement of Romani Settlements in Bulgaria" The publication includes insights from 40 green cities across 6 continents, 20 model communities and building projects, cutting-edge green technologies, and 4 best practices on green transportation. It also features articles from academic and business experts, ILIEVA, NINA Authors: Lyu Haifeng | Journal Name: The Collection of Global Forum on Human Settlements | Volume, Issue and Pages: Volume II | Publisher: China Environmental Publishing Group



New European Bauhaus Facility - Matchmaking event 2025

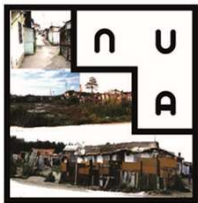
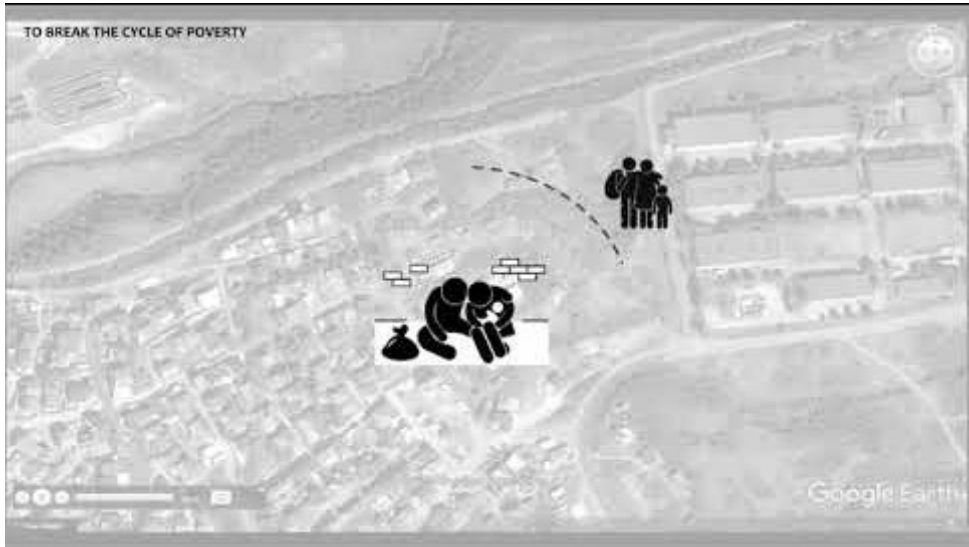
## ADAPTATIONS

Award winning innovative research, architecture and urban design studio dedicated on sustainable and inclusive design. We received several international awards and recognitions for architecture and urban design such as:

- First Prize in the 2022 Global Architecture & Design Awards by Rethinking the Future (RTF) (Residential projects category) "The objective of these awards is to raise awareness around the strategies Architects and Designers are employing to deal with the contemporary global challenges, and to bring the best of such projects into the light to inspire the next generation." RTF
- 2017 UN Global Award for Sustainable Cities and Human Settlements- "The awards program aims to accelerate the delivery of UN Sustainable Development Goals, notably SDG 11, recognize and celebrate winners' remarkable progress and valuable experience in making cities and human settlements safer, greener, more resilient, inclusive and sustainable, and drive more to follow suit and take decisive actions on the ground."



<https://www.youtube.com/watch?v=aiTUtgeQOYE>



COMMUNITY DRIVEN, BOTTOM UP, HOLISTIC APPROACHES

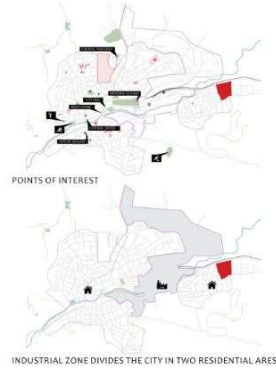
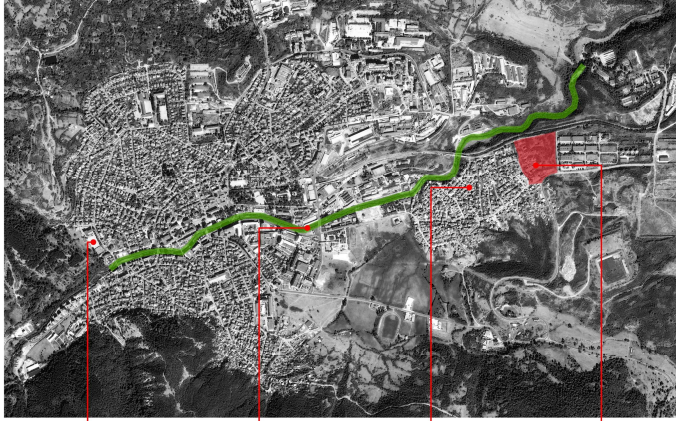


Инкрементно  
нарастване



PROJECT SUMMARY:

Today one of the biggest challenge Europe has to face after its enlargement, is the poor socio-economic conditions of the Roma people, which is unacceptable at the beginning of the 21st century. The "Europe 2020" strategy for smart, sustainable and inclusive growth, outlines five targets to be achieved by 2020, and social inclusion and poverty reduction is one of them. According to the recent statistics there are around 100 million people, currently spread all over Europe, but predominantly in South-Eastern part of the continent. Their camps and ghettos are in the cities all over Europe such as Paris (France), Rome (Italy), Belgrade (Serbia), but the largest are in Romania and Bulgaria. The Bulgaria Strategy for Regional Development 2012-2022 is aligned with the goals of the Europe 2020 strategy. However, steps to improve the housing conditions in Roma neighborhoods have been mostly sporadic and/or short term solutions, in particular due to the illegal status of many of the houses in the Roma communities. In the past, the national and regional governments have approached these communities with culturally inappropriate infrastructure and technical solutions, resulting in the continued marginalization of this ethnic group, and the development of mutual distrust about the motivations and efficiency of interventions in public improvements. In 2014/2015 the foundation "Trust for Social Achievements" an NGO with a main goal to support the poorest part of Bulgarian populations, focused on Roma people, and the municipality of a city, signed memorandum for collaboration. Our project is located in one of these cities, in the outskirts of the city of Plovdiv, in neighborhood called Lukovitza. The site has an area of 91 982 square meters. The property is currently not regulated, there is no basic infrastructure such as water, electricity roads and etc. However there are around 20-30 illegal Roma houses already built on the site. The project also proposes interventions at city scale master plan, using innovative technologies, for clearing the degraded river, and turning it into viable public, pedestrian friendly infrastructure, connecting the currently divided city. We believe that if the example become successful case study, it can be followed by other Roma communities not only in Bulgaria, but all over Europe. We will look how the community can inform and influence policy and practice in creative and ambitious ways, and how urban studies and related field can address and respond to the new societal challenges and opportunities. The project promises to be strategic environmental transformation, creating million of social benefits, regard to the "target issues" for sustainable construction, on different levels: neighborhood, city and country.



POINTS OF INTEREST

INDUSTRIAL ZONE DIVIDES THE CITY IN TWO RESIDENTIAL AREAS

POINTS OF INTEREST

INDUSTRIAL ZONE DIVIDES THE CITY IN TWO RESIDENTIAL AREAS



THE EXISTING SPORTING FACILITIES ARE SITUATED LITERALLY ON THE OTHER SIDE OF THE CITY AND CONSEQUENTLY THEY ARE NOT ACCESSIBLE FOR PEOPLE FROM THE NEIGHBOURHOOD. THE PROJECT PROPOSES A GREEN PEDESTRIAN PATH THAT CONNECTS THE SITE WITH THE EXISTING SPORTING INFRASTRUCTURE.



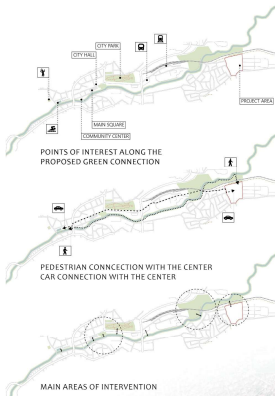
CURRENTLY THE RIVER IS A PLACE WHERE THE INDUSTRIAL PART OF THE CITY IS DUMPING ITS TRASH AND CONTAMINATIONS. THE PURIFICATION OF THE CONTAMINATED WATER IS HAPPENING OUTSIDE THE CITY LIMITS, AFTER THE POLLUTED WATER HAS PASSED BY THE NEIGHBOURHOOD.



THERE IS NO REAL PUBLIC SPACE AROUND THE SITE WHERE PEOPLE CAN GATHER AND SOCIALIZE. ALSO THERE ARE NO SPORTING FACILITIES FOR THE CHILDREN, SO THEY ARE MOSTLY PLAYING DIRECTLY ON THE STREETS, ACCORDING TO THE SURVEY, 80% OF THE RESIDENTS WOULD LIKE THIS ISSUE TO BE ADDRESSED.



THE PROPERTY IS CURRENTLY NOT REGULATED, THERE IS NO BASIC INFRASTRUCTURE SUCH AS: WATER, ELECTRICITY, ROADS AND ETC. HOWEVER THERE ARE AROUND 20-30 ILLEGAL ROMANI HOUSES ALREADY BUILT ON THE SITE. THE AIM OF THE PROJECT IS TO KEEP AND UPGRADE THOSE HOUSES AS WELL AS PROPOSE NEW ONES.

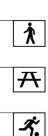


POINTS OF INTEREST ALONG THE PROPOSED GREEN CONNECTION

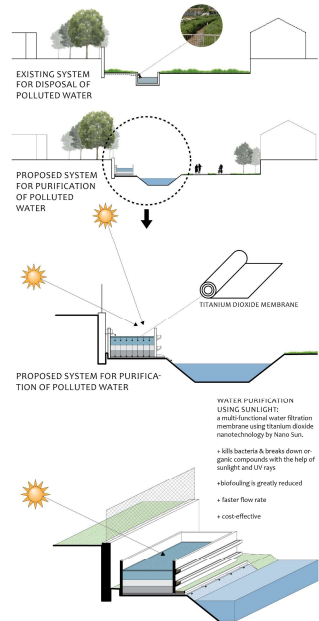
PEDESTRIAN CONNECTION WITH THE CENTER  
CAR CONNECTION WITH THE CENTER

MAIN AREAS OF INTERVENTION

SECTION B-B



SECTION A-A



EXISTING SYSTEM FOR DISPOSAL OF POLLUTED WATER

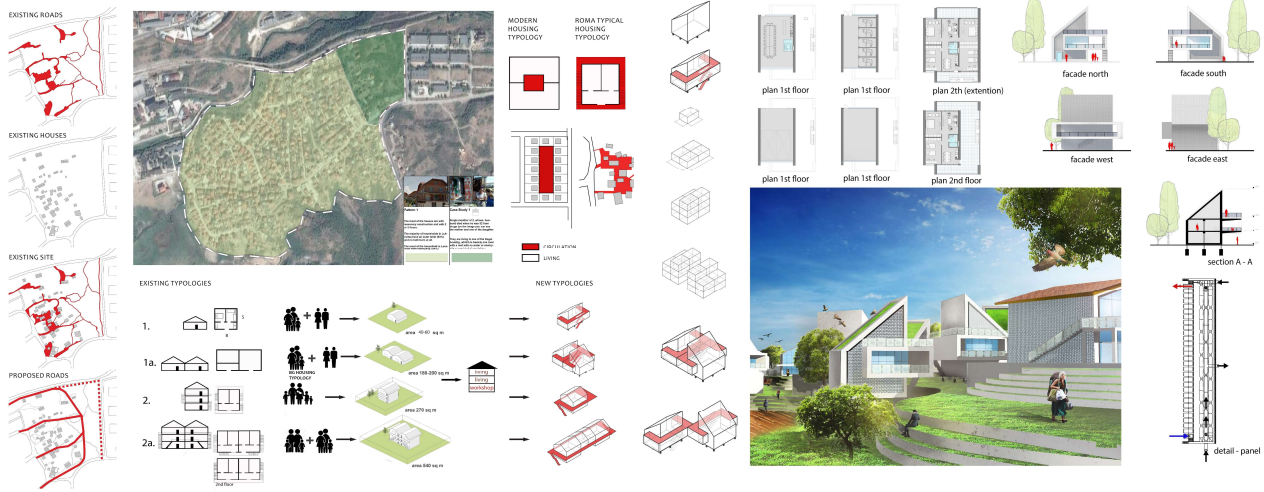
PROPOSED SYSTEM FOR PURIFICATION OF POLLUTED WATER

PROPOSED SYSTEM FOR PURIFICATION OF POLLUTED WATER

WATER PURIFICATION USING SUNLIGHT:  
a multi-functional water filtration membrane using titanium dioxide nanotechnology by Nano Sun.

- kills bacteria & breaks down organic compounds with the help of sunlight and UV rays
- absorbing is greatly reduced
- faster flow rate
- cost-effective

<https://www.youtube.com/watch?v=aiTUtgeQOYE>



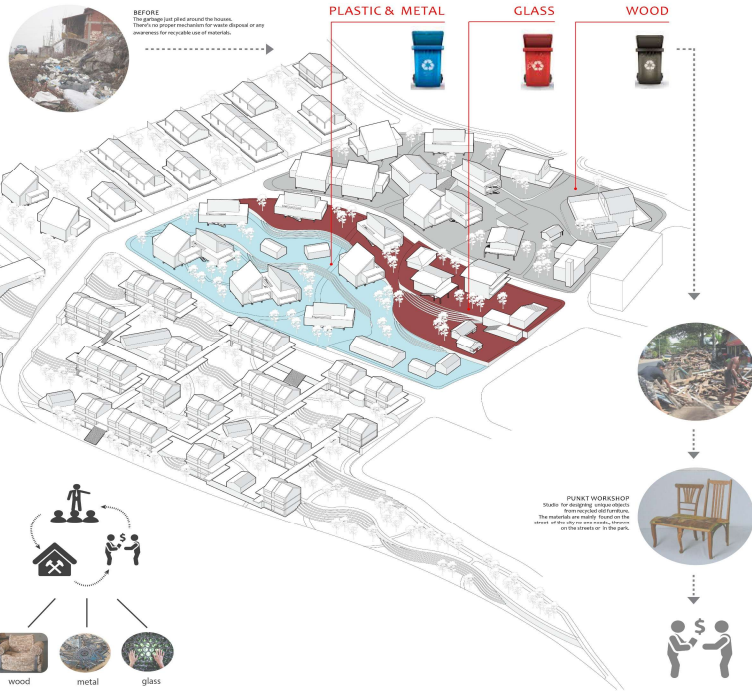
# **CIRCULAR ECONOMY "OR THE "ZERO WASTE PROGRAM FOR EUROPE": an essential agenda under the Europe 2030 strategy for "smart, sustainable and inclusive growth"**

1. Holistic approach: sustainable living is interrelated with sustainable education, employment and cultural integration.

In this project we used the holistic strategy recommended by the EU framework for national integration strategies up to 2020, for integrating Romani people on national and international level. To break the cycle of poverty, we approached the Romani neighborhood challenge in a very holistic way: at all levels, socially, economically and physically. Our innovative solution is not only by offering new housing typologies, as a model for sustainable improvement of this and similar neighborhoods in Bulgaria and across Europe.

## **2. CIRCULAR ECONOMY "OR THE "ZERO WASTE PROGRAM FOR EUROPE" METHOD**

We have used the "Circular economy " or the "Zero waste program for Europe" method, which looks beyond the linear "take, make and dispose" model, an essential agenda under the Europe 2030 strategy for "smart, sustainable and inclusive growth". This model is designed to redefine products, services and workforce and to minimize waste and pollution. This circular economic model builds better economic, environmental and social capital. Creating a participatory system to collect, recover and add value of waste materials following their use. Traditionally many Romani people made their living by gathering garbage across the city, returning it for recycling for minimal amount of money. In our project we focused on a way to empower the locals, by educating them, using waste materials, such as wood, paper, glass, bottles, plastic, to create innovative design objects such as jewelry, furniture and building materials. We had to create innovative business model. From product design, to consumer behavior, where through technical metabolism we reuse waste materials, turning them into valuable market resource of income. We will educate the Romani people how to stay competitive on the market, by bringing experienced young emergent designers from around the world, to show them how to turn these new recycled design objects and products into highly competitive and innovative designs, marketed nationally and internationally.



# REFERENCE TOPICS I AM INTERESTED IN

- **CONNECTING THE GREEN TRANSFORMATION, SOCIAL INCLUSION AND LOCAL DEMOCRACY**
- **NEB-2025-PARTICIPATION-01: The impact of common space on neighbourhood communities**
- **NEB-2025-PARTICIPATION-02: Fostering and maintaining the social fabric for the green transition in neighbourhoods**
- **NEB-2025-PARTICIPATION-03: Beautiful, sustainable and inclusive street furniture for the transformation of neighbourhoods**
- **NEB-2025-PARTICIPATION-04: Network of neighbourhoods for innovative policies on gentrification**
  
- **CIRCULAR AND REGENERATIVE APPROACHES FOR THE BUILT ENVIRONMENT**
- **NEB-2025-REGEN-01: Applying regenerative design to the built environment in neighbourhoods**
- **NEB-2025-REGEN-02: Bio-fabricated materials for sustainable and beautiful construction**
- **NEB-2025-REGEN-03: Sufficiency measures in the built environment**
- **NEB-2025-REGEN-04: Innovative approaches for sustainable, inclusive and beautiful social and affordable housing**
  
- **INNOVATIVE FUNDING AND NEW BUSINESS MODELS FOR THE TRANSFORMATION OF NEIGHBOURHOODS**
- **NEB-2025-BUSINESS-01: Renovating the built environment through design for adaptability and disassembly**
- **NEB-2025-BUSINESS-02: Bottom-up social entrepreneurship for the cocreation of neighbourhoods in line with the NEB**
- **NEB-2025-BUSINESS-03: Reverse local construction supply chains for the beautiful re-assembly of reclaimed construction products**