

THE PERFECT LOCATION FOR YOUR EUROPEAN EXPANSION

As an innovative growth location, the Leipzig Region offers ideal conditions for the expansion of your company. It is a place to grow, a place for ideas and a place to stay. In a dynamic environment, unique infrastructure meets attractive commercial space, young, highly trained and highly motivated personnel meet a remarkable quality of life and cutting-edge research. Companies also benefit from comprehensive funding opportunities that provide targeted support for investment and expansion at the location.

CENTRAL LOCATION WITH TRIMODAL INFRASTRUCTURE FOR OPTIMAL CONNECTIONS

As a trimodal transport hub, the Leipzig Region ensures optimal infrastructural connections to customers and suppliers: the motorway network, modern high-speed Deutsche Bahn lines and the airport with the largest DHL hub in the world and 24/7 flight operations offer ideal conditions for your new location. The region's infrastructure is also an advantage for skilled workers: places of work can be reached quickly, and leisure facilities are easily accessible.

>40,500

STUDENTS
16 universities providing a flow of trained talent

Ø13€/sqm

AVERAGE MONTHLY RENTAL PRICE
for office space
→ Source: BNP Paribas 2024

FROM 10€/sqm

PURCHASE PRICE FOR BUILDING LAND
in the Leipzig Region

24/7

FLIGHT OPERATIONS
at LEJ airport and DHL'S largest HUB worldwide

6%

POPULATION GROWTH
i.e. according to current forecasts by 2040 700,000 inhabitants - making Leipzig the sixth largest city in Germany
→ Source: City of Leipzig

UP TO 35%

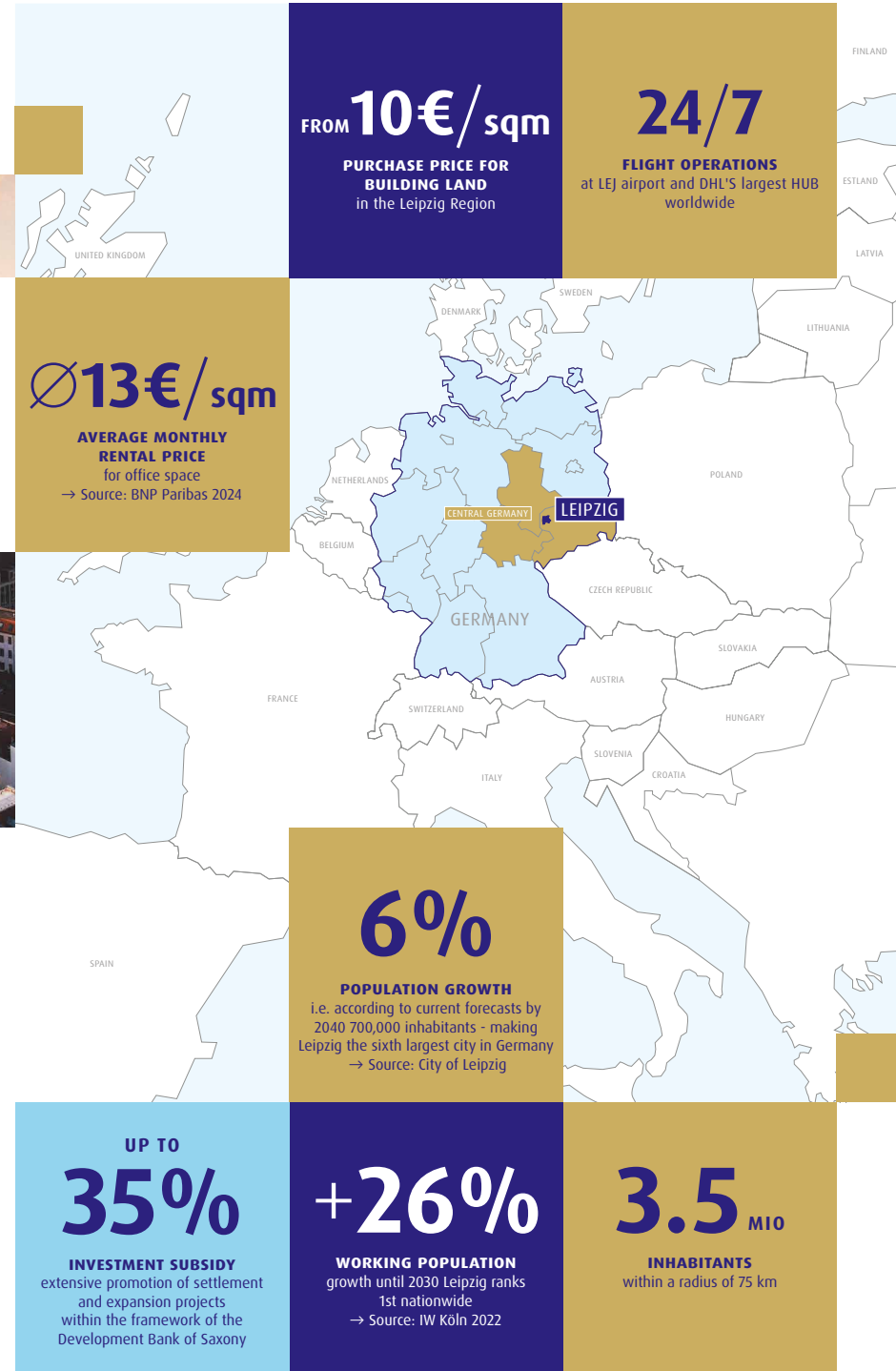
INVESTMENT SUBSIDY
extensive promotion of settlement and expansion projects within the framework of the Development Bank of Saxony

+26%

WORKING POPULATION
growth until 2030 Leipzig ranks 1st nationwide
→ Source: IW Köln 2022

3.5 MIO

INHABITANTS
within a radius of 75 km



**FREE, CONFIDENTIAL AND
BESPOKE - BENEFIT FROM
OUR SERVICE!**

Our expert consulting team advises domestic and international companies at every stage of the expansion process: from choosing the right location and identifying suitable office and commercial space, to helping you apply for the appropriate grants, to support in recruiting skilled staff. You will also have access to our strong network in the Leipzig Region, even beyond the relocation process. Our goal is to ensure that your company not only arrives in the Leipzig Region but grows sustainably.

INVEST REGION LEIPZIG GMBH

is a company of the City of Leipzig and the administrative district of Leipzig.

POST Markt 9 | 04109 Leipzig | Germany

PHONE +49 (0) 341 268277-70

MAIL info@invest-region-leipzig.de

WEB www.invest-region-leipzig.com

**HIGHLY DYNAMIC AND
DIVERSE: GROWTH IN THE
LEIPZIG REGION**

Leipzig Region offers ideal prospects for companies in important growth clusters (life sciences, digital economy, greentech) as well as established sectors such as automotive, manufacturing and e-commerce. In addition to global players such as BMW, Porsche and DHL, hidden champions such as Skeleton Technologies and Mytheresa have also specifically chosen the Leipzig Region, as the location offers ideal conditions for future-proof innovations and sustainable growth.

**EDUCATION AND RESEARCH
LANDSCAPE IN LEIPZIG**

Leipzig Region has a strong educational landscape, which is regarded as the backbone of cutting-edge research in Germany. With 16 universities and 63 research centres, Leipzig offers a wide range of training opportunities that are specifically tailored to the needs of regional growth industries. In relevant areas such as energy and environmental technology, biotechnology and the digital economy, companies benefit from close links with leading institutions and specialised networks that promote innovation and knowledge transfer and support the development of new technologies.



Invest Region Leipzig



#LeipzigUnlimited
testimonial campaign

**Selected company settlements in the
Leipzig Region**

2024



2023



2023



2022



2011



2008



2006



2001



1999



1998

