



Company Profile

General Presentation

30 August 2023





Above: One Microsoft Place, Microsoft EMEA HQ in Leopardstown, Ireland.
Winner - Best Office Architecture, European Property Awards
Winner - Architectural Design - Commercial Offices, Outstanding Property Award London (OPAL)



Above: One Microsoft Place, Microsoft EMEA HQ in Leopardstown, Ireland
Winner - Best Office Interiors, European Property Awards
Winner - Interior Design - Office, Outstanding Property Award London (OPAL)

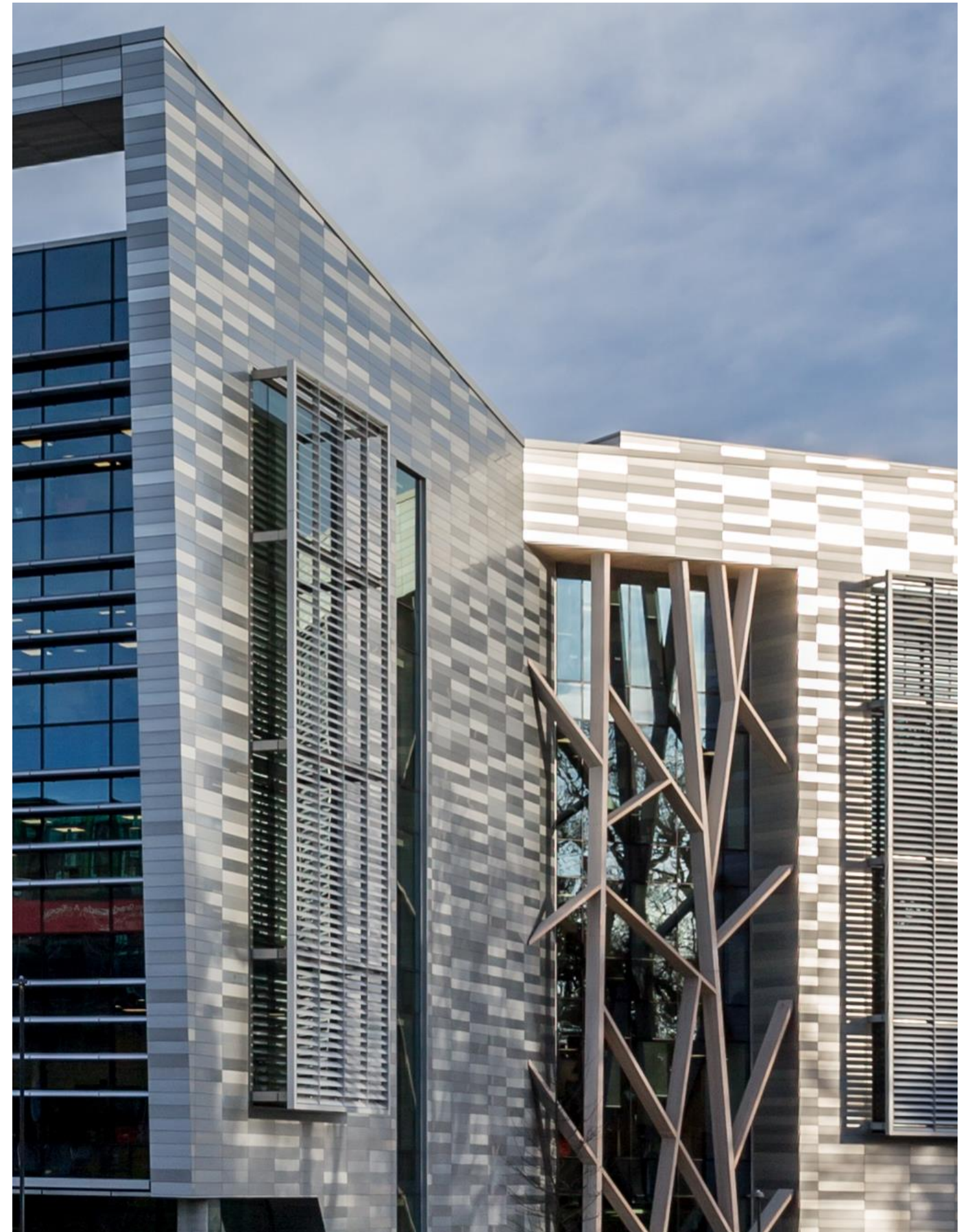
About RKD

RKD is an international firm driven by design thinking.

From the outset, our collective focus and strategic thinking enables us to design and realise architecture that works. We have a rich legacy dating back to our formation in 1913 and since then, we've established ourselves as one of the most diverse and effective architecture firms in Europe.

Design connects and unifies our multi-sector approach. Our skilled team of experienced professionals collaborate to deliver projects which range in terms of type and complexity. Our approach to every project is informed by design principles relating to simplicity, sustainability, efficiency, aesthetics and innovation.

Design thinking is at the heart of how we work. The desire for continuous innovation continues to drive our people and inspire our clients today. For RKD, 'design thinking' goes much deeper than the visual appearance of the project. It means a fresh approach to problem-solving. It means delivering the most practical solutions to bring your vision to life.



About RKD

What we do.

Architecture	→
Interiors	→
Masterplanning	→
Project Management	→
Sustainability	→
BC(a)R	→
BIM	→
Cleanrooms	→
Labs	→
Site Selection	→

We call it...
Design that works.

About RKD

Design that works

→ Design



→ Leadership



→ People



**Design-led, technically robust
architecture that works.**

An architecture practice providing rigorously tested and superbly crafted work for clients seeking well-considered and brilliantly executed design.

About RKD

Diverse work portfolio

7

RKD provides design solutions to
7 primary sectors

Data Centres +
Technology

Life
Sciences

Manufacturing +
Logistics

Commercial

Education +
Healthcare

Workplace +
Interiors

Sustainability +
Research

About RKD

At a glance

REPUTATION

...BASED ON
DESIGN EXCELLENCE
& PROJECT DELIVERY

DESIGN MANAGERS
+
TEAM
LEADERS

ESTD. 1913

110 YEARS OF BUSINESS
+ INNOVATION

INTEGRATED SIGNATURE APPROACH

MASTERPLANNING
ARCHITECTURE
INTERIOR DESIGN
SHELL+CORE / FIT OUT

STRONG BIM CAPABILITY

225
DEDICATED STAFF

LEED BREEAM WELL
CERTIFIED SUSTAINABLE DESIGN
IN-HOUSE EXPERTISE

AWARD WINNING DESIGN EXCELLENCE

75% REPEAT BUSINESS

FINANCIALLY STABLE



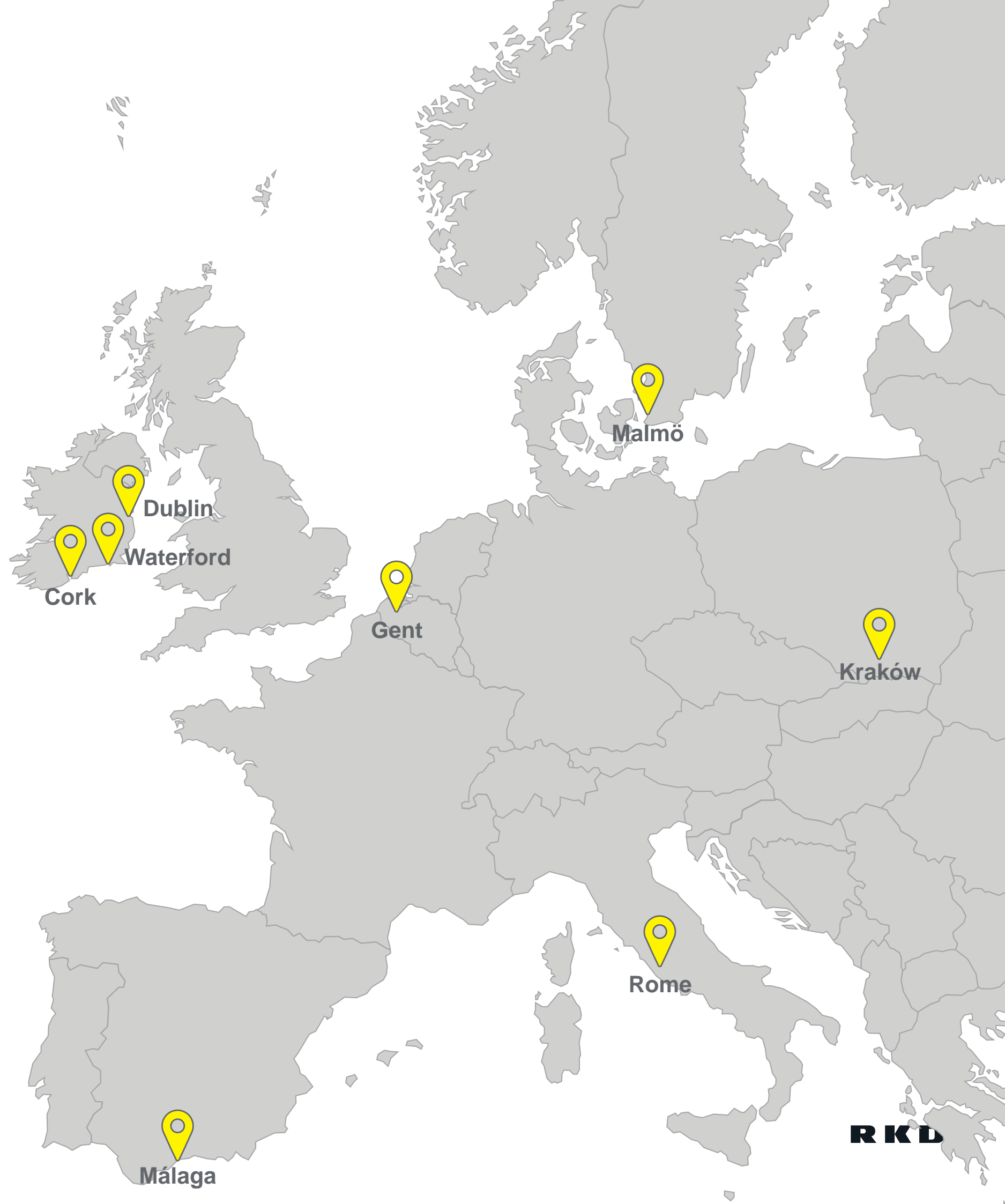
Design. Leadership. People.

About RKD

Where we are

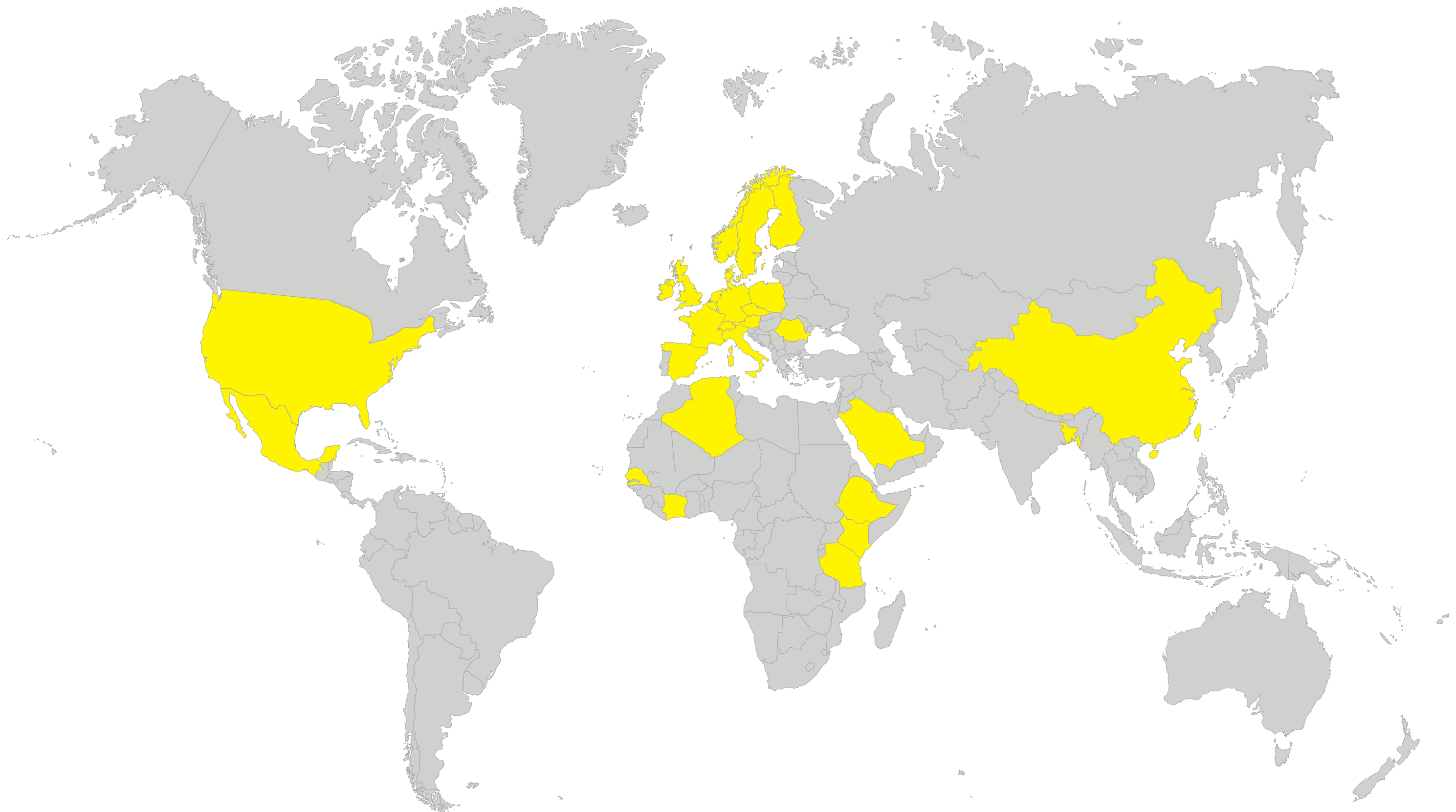
Headquartered in Ireland,
Focused on Europe.

From our offices in Ireland, Belgium, Sweden, Italy,
Spain, and Poland, we're capable of **supporting our
clients across the EMEA region.**



About RKD

Where we work



About RKD

Who we work with



Data Centres

Selected Projects

Data Centres

Selected Projects

7.2^{MW}



MIL01 Rapid Deployment DC
Milan, Italy (ongoing)

20^{MW}



DUB13 DC
Dublin, Ireland

4.8^{MW}



WAW01 Rapid Deployment DC
Warsaw, Poland (ongoing)

Data Centres

Selected Projects

20^{MW}



MMA01 DC
Malmö, Sweden

96^{MW}



DUB14/15 Two-Storey DC
Dublin, Ireland

50^{MW}



G VX01 DC
Gävle, Sweden

Data Centres

Selected Projects

19.2^{MW}



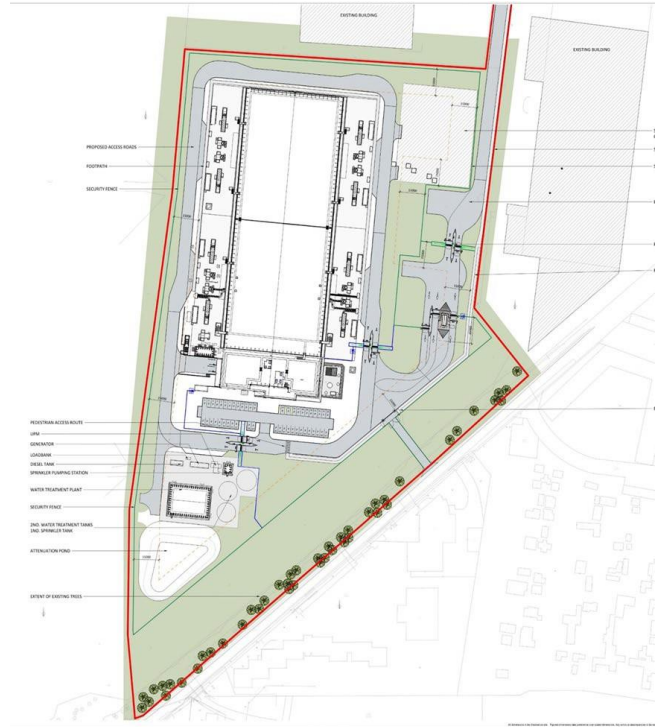
MIL05 DC
Milan, Italy (ongoing)

48^{MW}



MAD 03 DC
Madrid, Spain (Ongoing)

19.2^{MW}



VIE 06 DC
Vienna, Austria (ongoing)

Data Centres

Selected Projects

14^{MW}



DB3: First of Multiple DCs at Grangecastle
Dublin, Ireland

17.6^{MW}



DB5 DC
Dublin, Ireland

20^{MW}

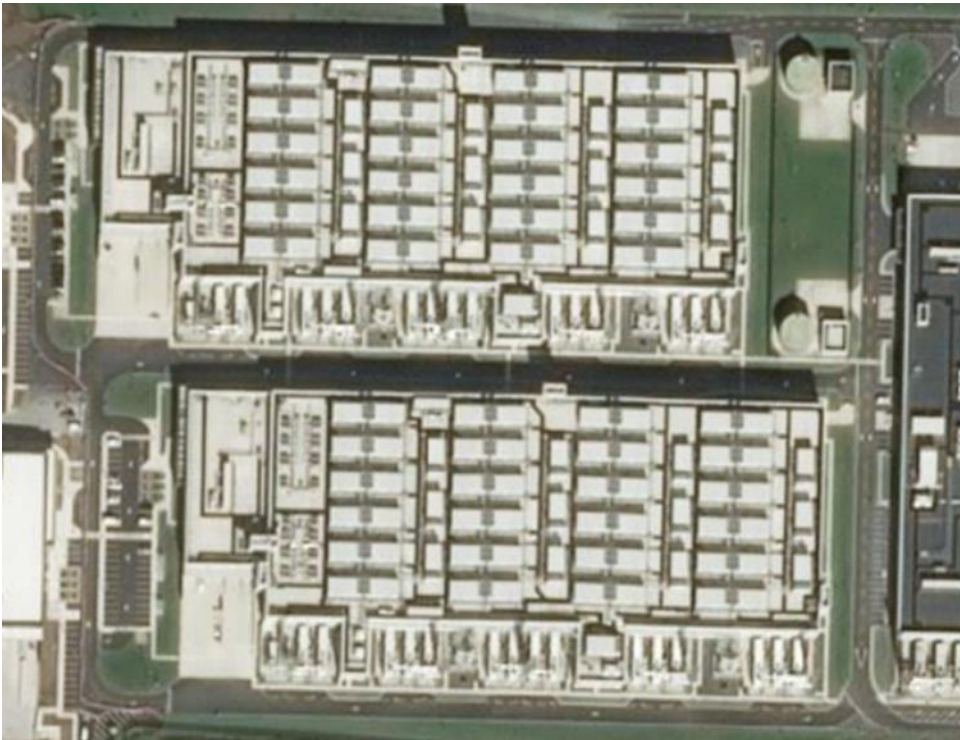


DUB06 DC
Dublin, Ireland

Data Centres

Selected Projects

32^{MW}



DUB07/08 Existing Campus Development
Dublin, Ireland

10^{MW}



DUB DC
Dublin, Ireland

17.6^{MW}



AMS05 DC
Noord-Holland, Netherlands

Data Centres

Specialist Services: Sustainability Accreditation

Sustainability is embedded at the core of RKD's design process.

- First Microsoft Data Centres to achieve LEED Gold
- Microsoft LEED Volume Programme for Data Centres
- Recognition for Leadership in the Delivery of Green Building by USGBC, Greenbuild Europe 2018
- Sean Hogan, RKD Sustainability & Research Director, awarded IWBI WELL Faculty Leadership

Sustainability projects in:

- Ireland
- UK
- Netherlands
- Belgium
- Sweden
- Romania
- Finland
- Kenya
- Chile
- Mexico



COMPANIES > MICROSOFT

Microsoft Creates "Blueprint" for Green Data Center Design

Microsoft data center in Cheyenne, Wyoming

Above: RKD delivered and continually administers the LEED programme that efficiently manages LEED V4 certification in the development of its global fleet of new data centres as part of Microsoft's global sustainability programme. Certification of all data centres to achieve minimum of LEED GOLD.



bre



Data Centres

Integrated Full-Service Solutions for DCs



Brief Development



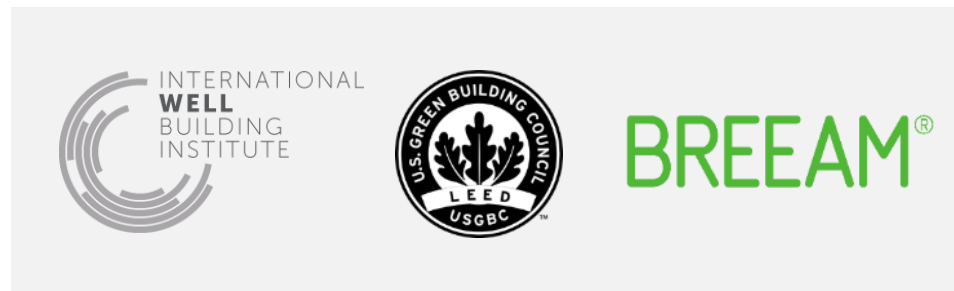
Masterplanning



Regulatory Compliance



Site Selection / Due Diligence



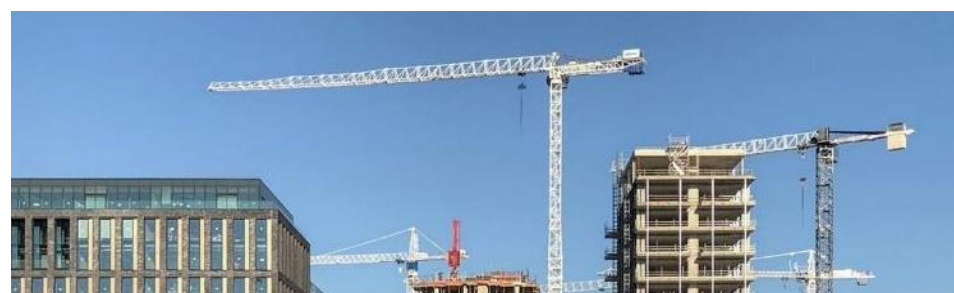
Sustainability Accreditation



Certified BIM Leadership



Prototype Design Localisation



Permitting



On-Site Construction Support

Life Sciences

Selected Projects

Enabling Abbott to meet worldwide demand for vascular devices and make a lasting impact on health in the 150+ countries they serve.

Location	Clonmel, Ireland
Area	46,000 sq. m
Cost	€100M



Biopharmaceutical manufacturing expansion,
QC laboratories and Ireland's first new building
to achieve LEED Gold certification.

Location	Waterford, Ireland
Area	7,000 sq. m
Cost	Private



International clinical research HQ including offices in 4 connected wings to support administration, marketing, and research functions with ancillary facilities.

Location	Dublin, Ireland
Area	12,000 sq. m
Cost	€40m



Boston Scientific Extension



3,200 sq. m office extension to Boston Scientific’s Clonmel facility to support existing and potential manufacturing and supply chain capacity.

Location	Clonmel, Ireland
Area	3,200 sq. m
Cost	Confidential



Galapagos Headquarters



HQ for a leading global biopharma company, focused on the discovery, development and commercialisation of innovative medicines that will improve people’s lives.

Location	Mechelen, Belgium
Area	46,000 sq. m
Cost	Confidential



Abbott Ireland Diabetes Care Donegal Facility



Installation of a new process line within the envelope of the existing warehouse building, new warehouse and waste building, and provision of 90 new external car parking spaces with associated landscaping works.

Location	Donegal, Ireland
Area	5,000 sq. m
Cost	Confidential



Eli Lilly Biopharmaceutical Manufacturing Campus



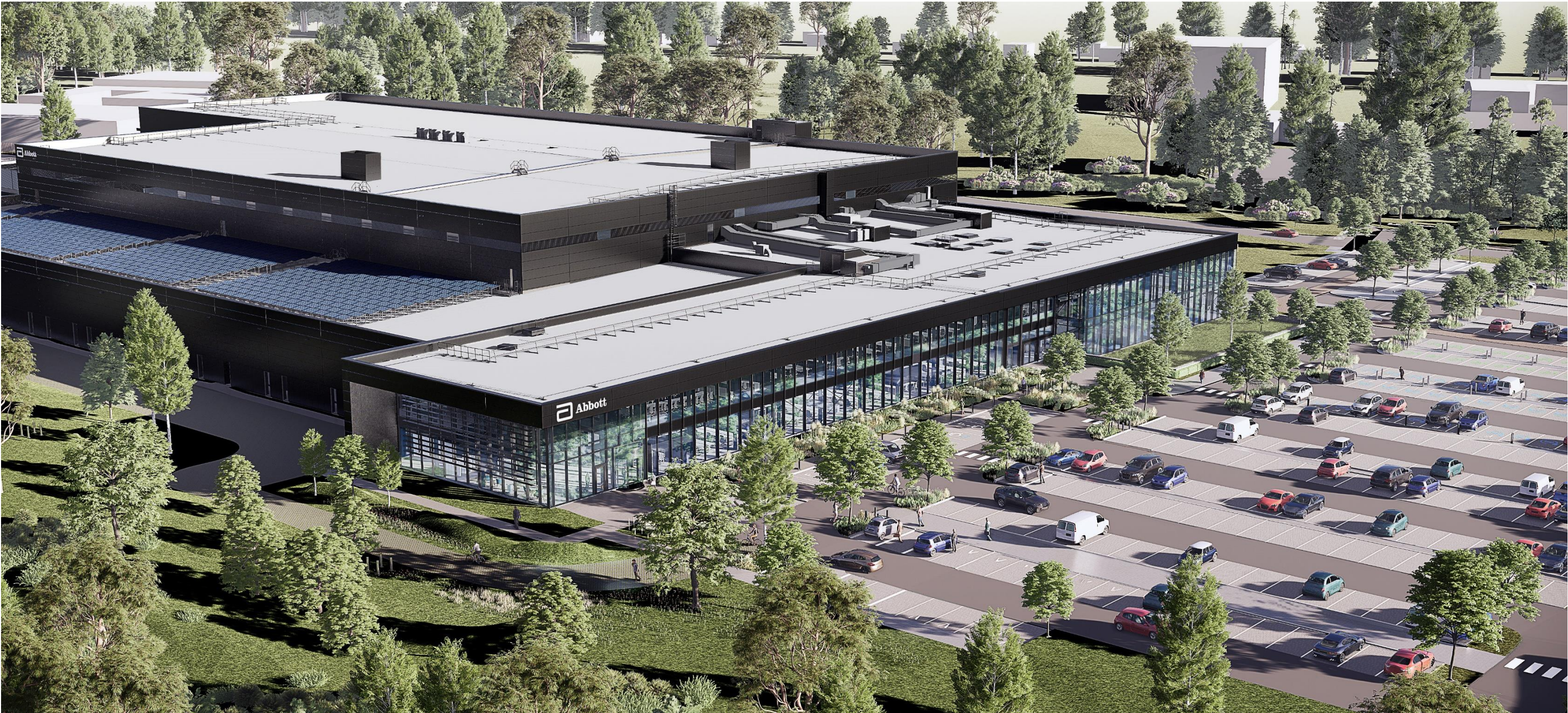
Biopharma manufacturing facility with solar farm; canteen, laboratory & administration building; manufacturing & warehouse building; central utilities plant (CUP) building; freezer & maintenance building; visitors centre; bicycle & shower building; carparking and landscaping

Location	Limerick, Ireland
Area: Site / Building	11.6 HA / 47,000 sq. m
Cost	Confidential



New production facility for 1,300 staff with manufacturing spaces in ballroom configuration, associated laboratory, warehousing, canteen, offices, and ancillary facilities.

Location	Kilkenny, Ireland
Area	29,000 sq. m
Cost	Confidential



Biopharma quality control laboratory
for a private client.

Location	Dublin, Ireland
Area	480 sq. m
Cost	Private



Horizon Therapeutics Global Headquarters

RKD

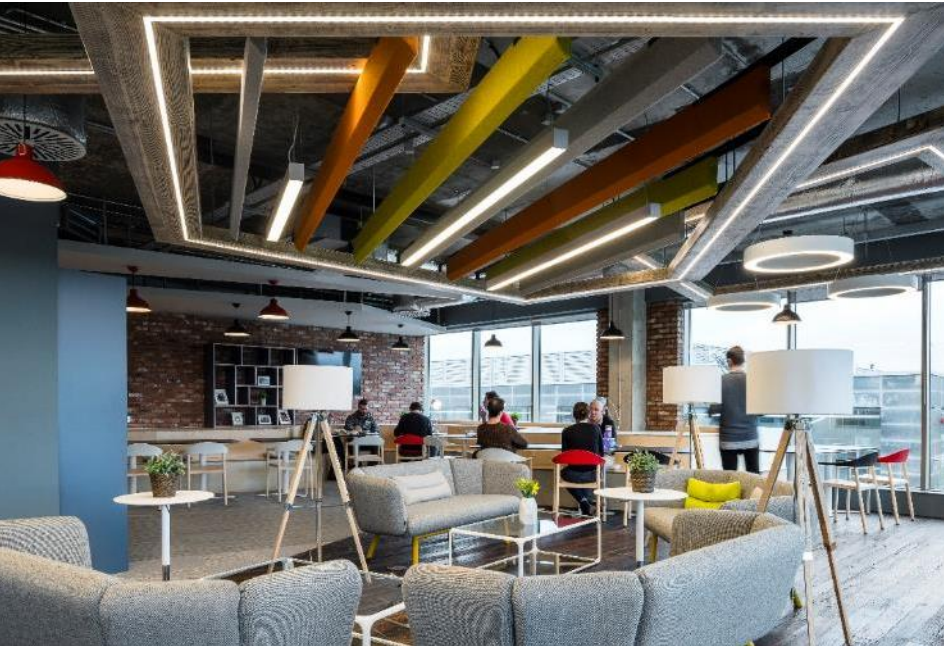
Certified to LEED Gold, RKD’s interior design and fit out of this global biotechnology headquarters at 70 St. Stephen’s Green in Dublin was driven by Horizon’s simple idea: science and compassion must work together to transform lives.

Location	Dublin, Ireland
Area	5,800 sq. m.
Cost	Private



Reimagined concept of a pharma fit out enabling biotech research company APC to help its partners deliver vital medicines to patients.

Location	Dublin, Ireland
Area	1,600 sq. m
Cost	€20m



Progressive, collaborative, function-led workplace environment to meet the contemporary needs of J&J's dynamic work force.

Location	Dublin, Ireland
Area	1,700 sq. m
Cost	Private



Cohesive HQ fit out for driving a single mission to improve patients’ lives by developing meaningful products that address unmet medical needs.

Location	Dublin, Ireland
Area	2,800 sq. m
Cost	Private

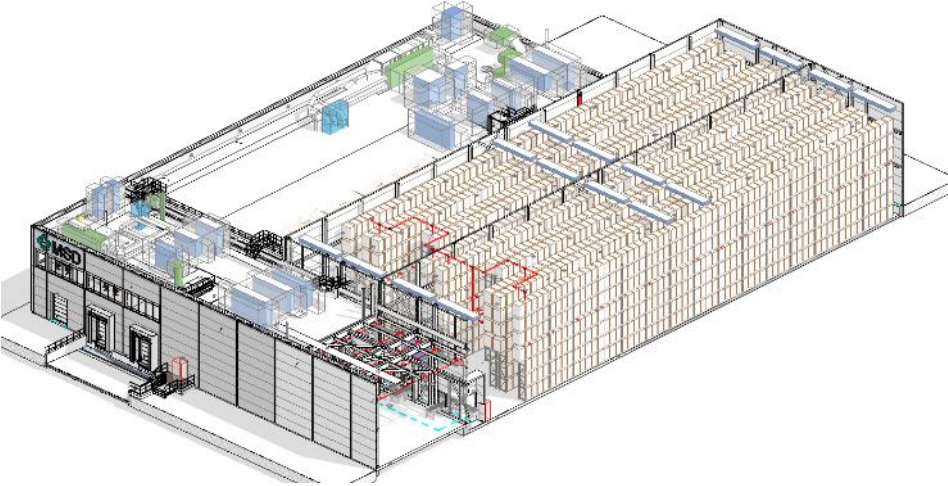


MSD Finished Goods Coldstore



Central packaging facility for 5,000 palettes with fully-automated coldstore, integrated campus AGV system, controllable temperature zones, large sorting halls, adjacent freezer and loading docks for maximum efficiency. The facility is MSD’s largest coldstore outside the U.S.A.

Location	Haarlem, Netherlands
Area	5,000 sq. m
Cost	Private



The Sustaining Operations Facility accommodates new office, canteen, and training spaces to meet the growing needs of MSD Site Operations.

Location	Carlow, Ireland
Area	2,000 sq. m
Cost	€6m



GSK Wavre Warehouse Upgrades



RKD assisted GSK with remedial construction works on existing high-bay warehousing. The project included renovation and replacement of cold rooms within the existing logistic/distribution sector and replacement of existing chiller installations of operational warehousing / cold rooms.

Location	Wavre, Belgium
Area	5,540 sq. m
Cost	Confidential



General aerial view of GSK Wavre campus

Multi-purpose manufacturing plant designed to produce bulk active ingredients for a range of Pfizer-produced drugs.

Location	Cork, Ireland
Area	18,000 sq. m
Cost	€65m



The masterplan future-proofed the facility by allowing Genzyme to double in size on the campus including the design for research and QC laboratories.

Location	Geel, Belgium
Area	36,000 sq. m
Cost	€45m



Good Manufacturing Practices (GMP) inform the development of the concept for the campus which will supply a wide array of dosage forms.

Location	Dhaka, Bangladesh
Area	45,000 sq. m
Cost	Private



Pharmaceutical campus masterplan and catalyst for attracting investment utilising GE’s ready-to-operate, cGMP-compliant KUBio modules.

Location	Ringaskiddy, Ireland
Area	40,000 sq. m
Cost	Private



Major 3-storey extension to tablet manufacturing facility consisting of new process building and ancillary services, isolated dispensing, granulation, milling/drying, blending, compression and coating of the tablets.

Location	Newbridge, Ireland
Area	18,000 sq. m
Cost	€104m



Industrial

Selected Projects

Diageo Project Atreyu – Tequila Production Facility, Jalisco, Mexico



Project Atreyu significantly expands Diageo’s manufacturing footprint in Mexico. The company has invested more than US\$500 million dollars in new facilities on a greenfield site in Jalisco, Mexico. The full scope of the scheme includes distilleries, maturation and finished goods warehousing, offices, welfare and utilities including Biomass and WWT plants.

Location	Jalisco, Mexico
Area	221,800 sq. m
Cost	€500m



Diageo Project Black – New Brewery, Ireland

RKD is currently working with Diageo on a Ireland’s first purpose-built carbon neutral brewery on a greenfield site in Co. Kildare, Ireland. As the production of lagers and ales is transferred to the new facility it will enable St James’s Gate to increase the production of Guinness to meet global demand. The project is in planning and tendering process.

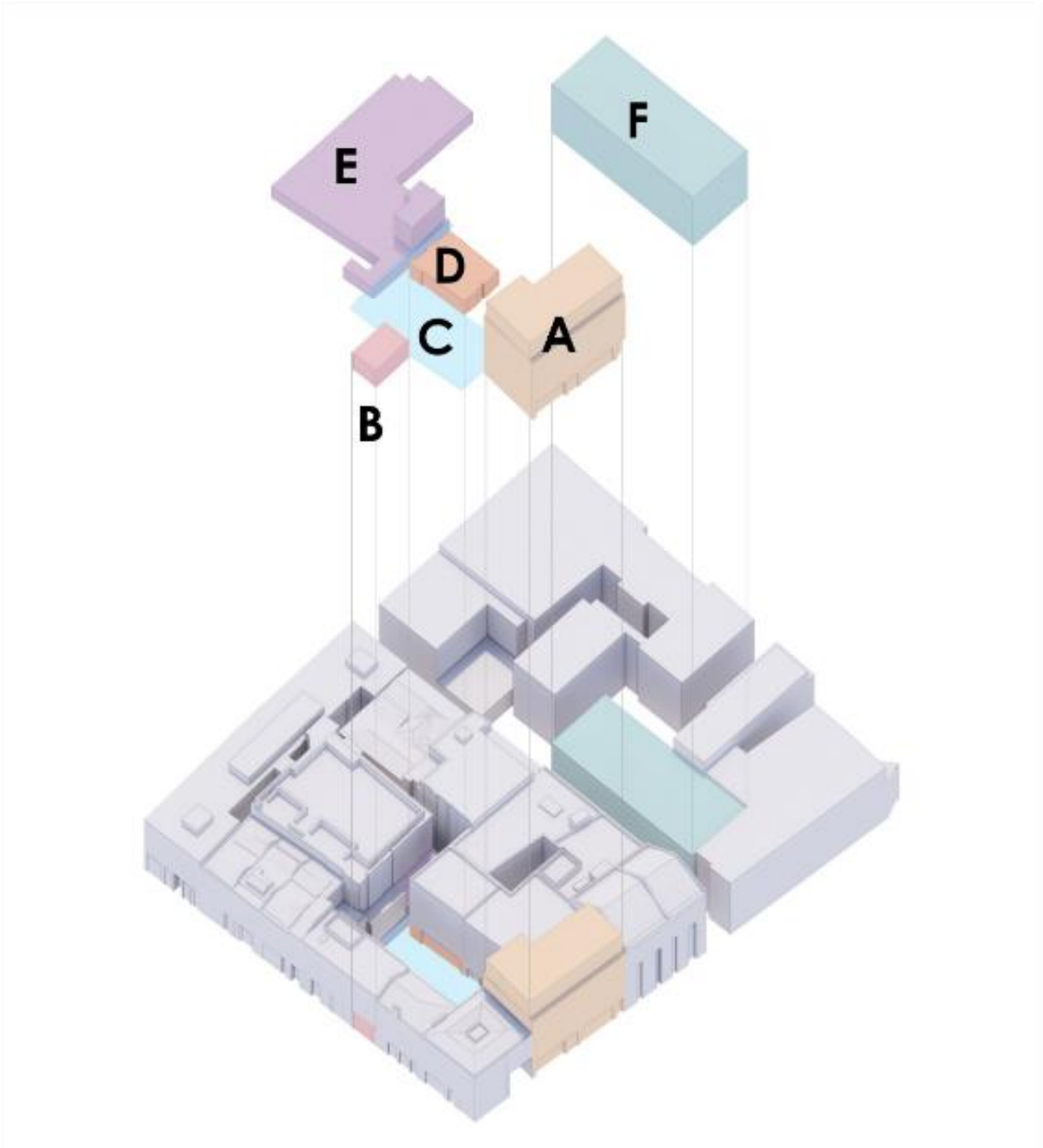
Location	Kildare, Ireland
Area	11,550 sq. m
Cost	€200m



Diageo Project Reality – Micro Brewery & Hospitality, Covent Garden, London, UK

“Guinness at Old Brewers’ Yard” is the vision for the proposed circa. 5,000 sq. m mixed-use development composed of five existing buildings and a service yard nestled in the north-eastern corner of Covent Garden. The proposals seek internal and external alterations, a new rooftop extension, and the re-purposing of the Yard to create a brand-new leisure and visitor destination in this part of the city.

Location	London, UK
Area	5,000 sq. m
Cost	€34m



New energy surges through the former Guinness Power House, in an immersive and unconventional space.

Location	Dublin, Ireland
Area	3,500 sq. m
Cost	Private



Diageo Brewhouse 4

One of the most technologically-advanced and environmentally-sustainable breweries in the world.

Location	Dublin, Ireland
Area	10,300 sq. m
Cost	€45m

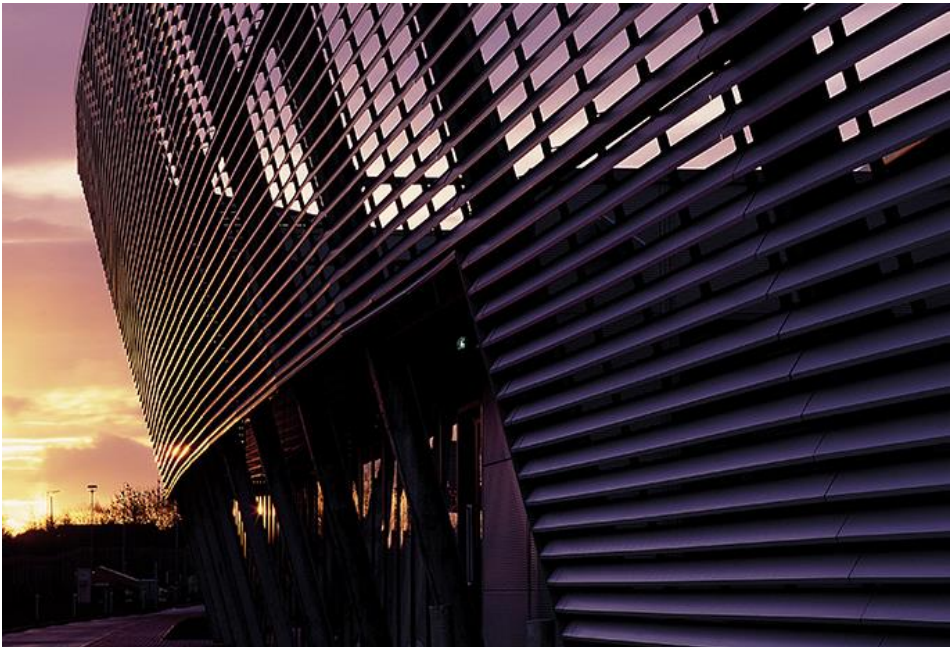


Baileys Manufacturing Expansion



Ultra-modern manufacturing facility sustaining global demand for the world's first and favourite cream liqueur, Bailey's Irish Cream.

Location	Belfast, UK
Area	10,000 sq. m
Cost	€25m

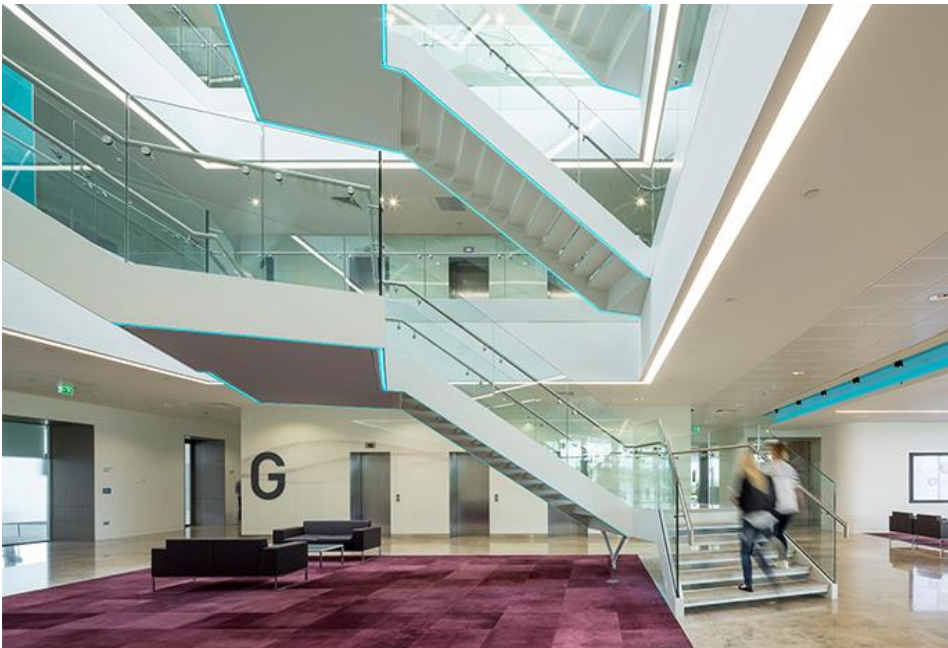


Kerry Global Technology & Innovation Centre



Global technology and innovation centre empowering Kerry Group's mission to be a world leader in Taste and Nutrition.

Location	Naas, Ireland
Area	23,500 sq. m
Cost	€60m



Ireland Food Safety Laboratories



Supporting Ireland's billion-Euro food industry through national research and quality control, an extensive suite of BSL 3 and BSL 4 labs are included within 12,000 sq. m of laboratories.

Location	Backweston, Ireland
Area	25,000 sq. m
Cost	€95m



1,500 sq. m Chilled Storage and distribution centre, forming part of a new 7,000 sq. m production facility for Kerrygold.

Location	Mitchelstown, Ireland
Area	1,500 sq. m (of 7,000 sq. m)
Cost	Private



2,000 sq. m High Bay ASRS Chilled Storage and distribution centre, forming part of a new 4,000 sq. m extension to an existing production facility for Kerrygold.

Location	Mitchelstown, Ireland
Area	2,000 sq. m (of 4,000 sq. m)
Cost	Private

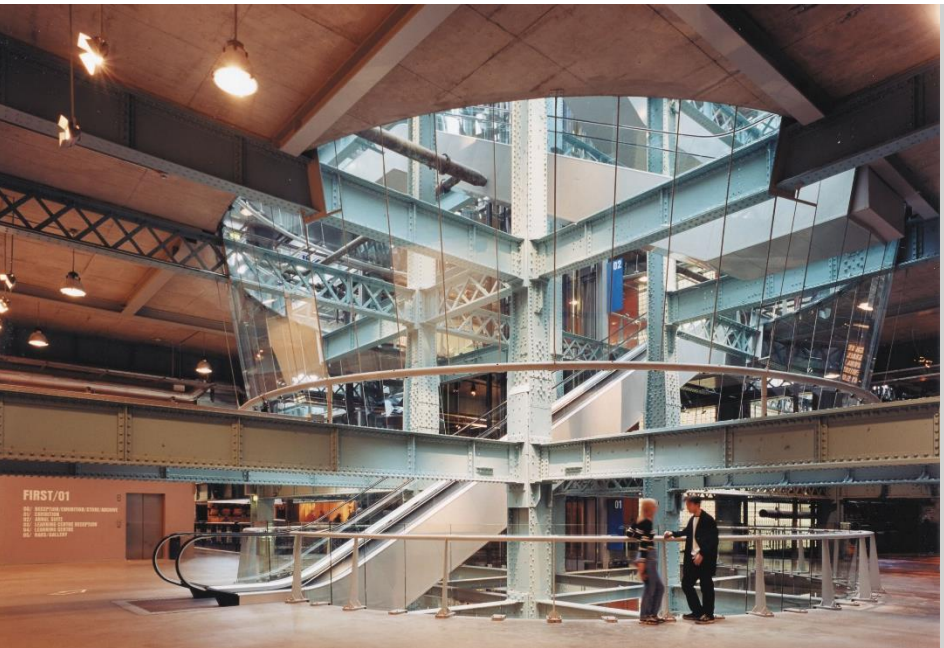


Guinness Storehouse

RKD

The home of the Black Stuff, the heart of Dublin, and Ireland's most popular visitor attraction is constantly evolving.

Location	Dublin, Ireland
Area	16,000 sq. m
Cost	€40m



South West Business Park Masterplan



This masterplan for a new build logistics park provides best-in-class warehouse units with air conditioned offices and LEED Silver sustainability credentials to service demand from the ecommerce, retail supply chain, and pharma sectors.

Location	Dublin, Ireland
Area	28,000 sq. m
Cost	Confidential

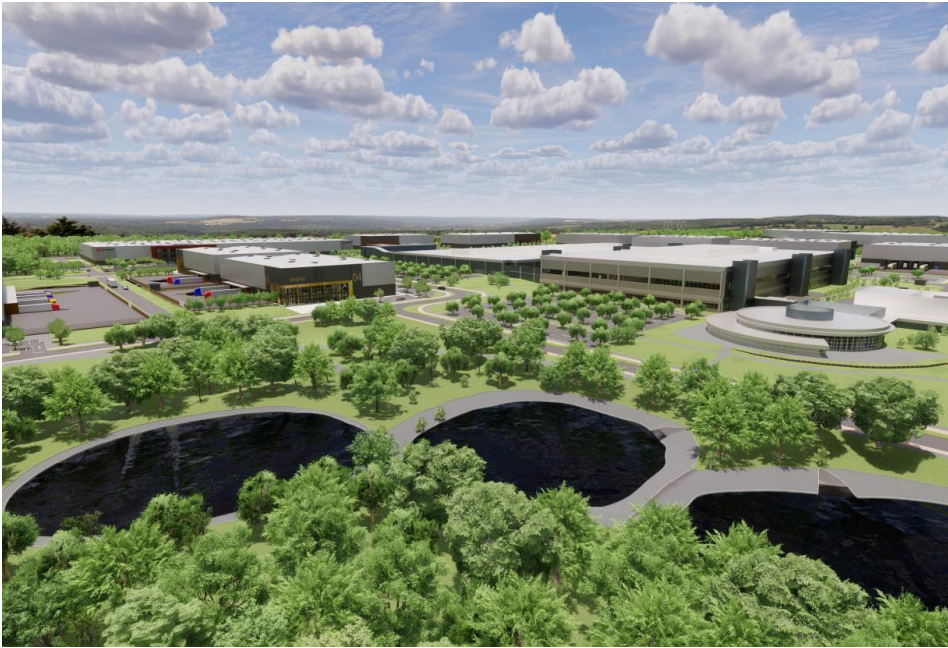


Liffey Business Campus Masterplan



With a combination of high-quality facilities, first class on site amenities and unrivalled accessibility, Liffey Business Campus will become a superior business environment in an established location attracting distribution and warehousing specialists.

Location	Leixlip, Dublin
Area	82,000 sq. m
Cost	Confidential



New high-tech logistics, warehouse and distribution hub for DB Schenker with AutoStore storage and retrieval system, enhanced sustainability, and high emphasis on employee wellness inside the feature Grade A office block.

Location	Leixlip, Ireland
Area	30,000 sq. m
Cost	Confidential



Tine Cheese Factory Mogeely

RKD

Comprising factory and administration / staff facilities on a greenfield site, Tine Mogeely produces 17,000 tons of cheese per annum for the export market.

Location	Mogeely, Co. Cork
Area	9,000 sq. m.
Cost	€27m



Lidl Distribution Centre

Distribution centre with storage capacity for 49 million products to serve Lidl's network of 90 stores in the Leinster area. The rooftop photovoltaic array (the largest on any building in Ireland) generates 25% of the facility's power requirement.



Location	Newbridge, Ireland
Area	57,600 sq. m
Cost	Private



Benchmark project demonstrating the highest levels of service integration and design excellence to reflect a world-renowned engineering tradition.

Location	Leixlip, Ireland
Area	120,000 sq. m
Cost	€215m



Contact

RKD

Connect with us



<https://rkd.ie>



[@rkdarchitects](https://twitter.com/rkdarchitects)



[@rkd_architects](https://www.instagram.com/rkd_architects)



<https://ie.linkedin.com/company/rkd-architects>



Dziękuję

Thank you