

KERRY INDEV LOGISTICS PRIVATE LIMITED

(Rebranding now as **K-Index Logistics**)

Competent • Competitive • Comprehensive



INDIA FOCUS

ASIA SPECIALIST

GLOBAL NETWORK

CORPORATE PRESENTATION



- ❖ We, K-INDEV are an integrated logistics solutions company with all logistics and distribution services under one roof with PAN INDIA locations with over four decades of expertise.
- ❖ We have a strong presence with the top of-the-line advanced infrastructural facilities – CFS, ICDs, custom bonded warehouse, 3PL warehouse, Free Trade Warehousing Zone, transportation fleet, ably supported by international freight forwarding and customs brokerage services.
- ❖ With strong and stable financial background, rated A/A1-Stable by CRISIL and 5A2-Good by Dun & Bradstreet – an indicator of the company’s financial strength.
- ❖ We have been bestowed with numerous national and international awards consistently over the years by our esteemed clientele and trade fraternities for our dependable, effective and efficient cargo-handling services.

WE ARE NOW **K-INDEX**

Dr S Xavier Britto - Chairman

Dr. Xavier Britto founded **INDEX** - a synonym for **INDian DEVELOPMENT** in 1984 with immediate objective of carrying on clearing and forwarding operations and the long-term objective of offering comprehensive cargo handling facilities.

In 2016, Index entered into a Joint Venture with Kerry Logistics Network, thus becoming the now revered Kerry Index Logistics Private Limited.

K-Index is one of the leading largest Logistics service providers in India and one of the top 3 logistics companies in the Indian landscape.



INDIA NETWORK



40 Years & counting



29 Locations across India



4+ million sq.ft. of Warehouse space & expanding



0.3 million sq.ft. space in FTWZ - Chennai & Mundra



2 ICD / 2 CFS / 1 AFS



500+ Fleet of Leased Trailers for EXIM Transportation



IFF

15 offices across India
Ahmedabad | Bengaluru | Baroda | Chennai | Coimbatore | Delhi | Hyderabad | Indore | Jalandhar | Kochi | Kolkata | Mumbai | Pune | Tuticorin | Vizag

PROJECT LOGISTICS

ODC cargo, breakbulk & turnkey projects
Bengaluru | Chennai | Mumbai | Mundra | Delhi

3 PL FACILITIES

14 offices across in India
| Bengaluru | Chennai | Delhi | Gurgaon | Bhopal | Hyderabad | Jamshedpur | Kolkata | Lucknow | Mumbai | Punjab | Puducherry | Bhubaneswar | Pune

2 CFS

Mumbai | Tuticorin

2 ICD

Chennai (IRR) | Tirupur

1 AFS - Chennai

CUSTOMS BROKERAGE & TRANSPORTATION

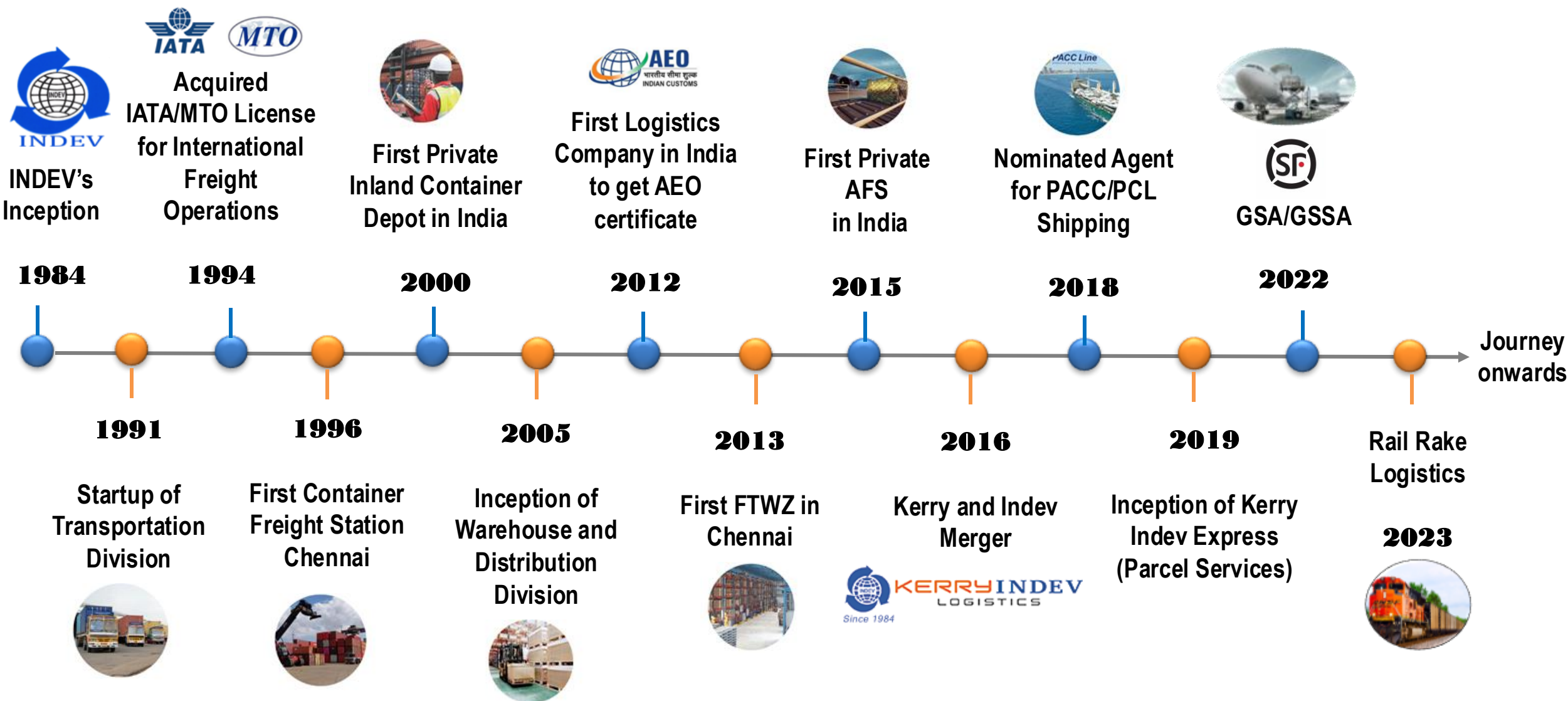
15 offices across India
Bengaluru | Chennai | Coimbatore | Delhi | Goa | Hyderabad | Karur | Kolkata | Mumbai | Puducherry | Tirupur | Tuticorin Etc.

FTWZ

Chennai | Mundra

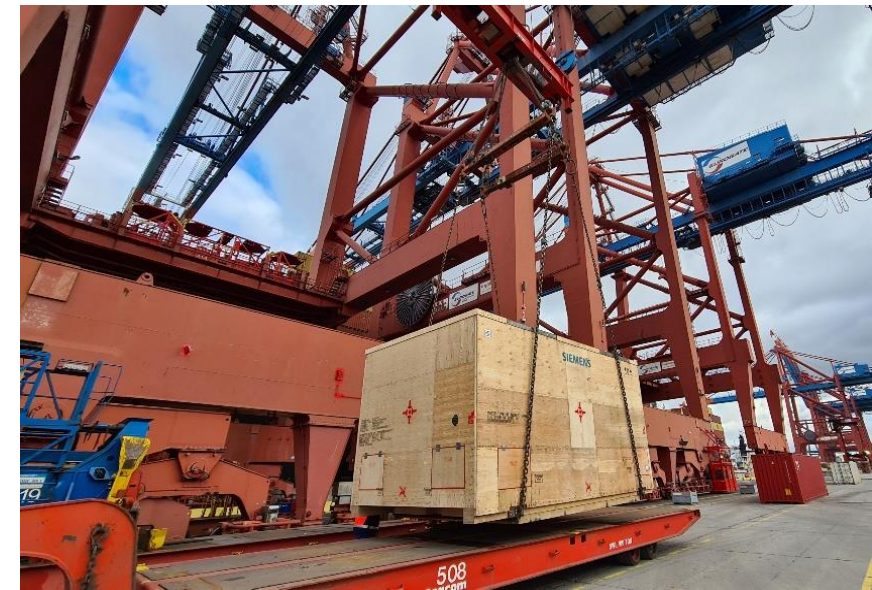
Proposed: Mumbai

PIONEERING WITH INNOVATIVENESS SINCE 1984





OFFERINGS THAT VOW EXCLUSIVITY, PERMANENCE AND TOTAL INTEGRATED LOGISTICS SOLUTIONS



Customs Clearance



SERVICES WE OFFER

- Import / Export Documentation
- SEZ / EOU / STPI & EHTP documentation and clearance
- Bonding / Ex-bonding
- High Sea Sales
- Processing of Draw-backs & refunds
- SVB Order processing
- Specialized clearances such as – ATA Carnet / Repair & Return / Re-import / Re-export
- Consultation services catering to Registrations, Valuations, Drawbacks, DGFT services, etc.



40 YEARS OF CUSTOMS CLEARANCE EXPERIENCE

- Over 1000 staff involved in customs handling
- Operating from 15 office locations
- Yearly handling over 1,50,000 inbound and outbound customs entry
- Facilitates Faceless Assessment for clients
- Recipient of Awards in Best CUSTOMS BROKERAGE FIRM & EXCELLENCE IN SERVICES - 14 years in a row
- Recipient of World Customs Organization (WCO) Certificate of Merit in the year 2018.
- Speedy Clearance
 - Within 24 hours for AIR cargo
 - Within 48 hours of OCEAN cargo

Branches

- Bengaluru | Chennai | Coimbatore | Delhi | Goa | Hyderabad | Karur | Kolkata | Mumbai | Puducherry | Tirupur | Tuticorin | etc.

Transportation

SAFETY, SECURITY & SPEED

- More than 500 fleet vehicles for transportation of containerized / break bulk / ODC cargo to meet your end-to-end needs
- Major shipping lines for transportation movement
- Move anything of any size from anywhere to anywhere
- Authorized for ICD & CFS movements
- Vehicle position tracking capability
- Excellent transit time performance
- Excellent security of Cargo.



Full Truck
Loads Primary
& Secondary
Transportation
(Pan India)



Milk-Run
(within
cities)



Part Truck Load
: Domestic
Surface &
Domestic Air
(Pan India)



Reverse
Logistics
(Pan India)



Biker delivery
(within
cities)



INTERNATIONAL FREIGHT FORWARDING

<p>SEA FREIGHT </p>	<p>Branches</p>	<p>AIR FREIGHT </p>	<p>INTERNATIONAL EXPRESS </p>
<ul style="list-style-type: none"> • Carrying around 45,000 teus annually • FCL / LCL services catering to multiple sectors - Automotive, Consumer & Retail, Engineering & Manufacturing, Technology & Telecommunications, Chemicals, Pharma & Healthcare and many more. • Buyers Consolidation utilizing owned infrastructure - CFS, ICD & Warehouses • Virtual Business Office -Purchase Order Management • Project Logistics catering to break bulk, turnkey projects 	<ul style="list-style-type: none"> • Ahmedabad Bengaluru Baroda Chennai Coimbatore Delhi Hyderabad Indore Jalandhar Kochi Kolkata Mumbai Pune Tuticorin Vizag. 	<ul style="list-style-type: none"> • We carry General, Refrigerated and Hazardous Cargo including Odd Dimension & Bulk consignments • Chartering services for extra capacity • Strong relations with premium and deferred airlines gives us an edge over pricing and space planning. • Handling cargo strictly as per airline guidelines • Successful execution of Time-Definite and Door-to-Door deliveries 	<ul style="list-style-type: none"> • International Standard Express: Door to Door, fast processing through out the process, with formal Customs declaration service provided • International Economy Express : Economy International Express services for customers not sensitive for transit time • International E- Parcel : Cross border E-parcel services via international air transportation, Customs clearance and delivery for cross border e-commerce business
			 <p>Transportation</p> <p><< DOOR - DOOR >></p>

INFRASTRUCTURE – CFS/ICD/AFS

Container Freight Station Inland Container Depot



- 2 CFS - Mumbai, Tuticorin
- 2 ICD - Chennai, Tirupur.
- 1 AFS - Chennai.
- EDI connectivity and dedicated customs officials
- Bonded warehouse facility available
- Container yard with open bonding facility.
- Reefer plug-in facility available
- Container repairing services



<< OWNED FACILITY >>

AEO certified facilities

ISO 9001 QMS | ISO 14001 EMS | ISO 45001 OHS | ISO 27001 ISMS | ISO 26000 CSR Guidelines.

State of the art infrastructure with reach stackers, forklifts, HPT, BPT and RTG cranes

Export consolidation centers

Just in time inventory replenishment from bonded warehouses

24x7 Customs Clearance facilitation

Dedicated fleets supporting EXIM movements

Public Bonding Facility

Empty Yard and MNR facility

Huge Trailer parking area

24 hours surveillance.

Air Freight Station



- First AFS at the closest proximity to Chennai – Acts as “All Ground Handling Services Under One Roof”
- Activities performed at the Off-Airport common user facility for IMPEX cargo movements:
 - Customs Documentation and Examination
 - Cargo Acceptance check (weight/volume)
 - Security Checks (x-ray Screening/physical check)
 - Palletization
- Dedicated Fleets supporting round clock services + Direct Air Cargo Movement (Unit Load Device [ULD]) with immediate clearance



3PL WAREHOUSING

Third Party Logistics (3PL)

- 3PL warehousing operations across India with full Compliances, sprinklers, Hydrant, CCTV and Security measures
- Multi Client Facilities with shared resources
- Storage, distribution, consolidation, VAS, WMS based inventory management system
- Customer Specific SOP / KPI / SLA and structured MIS
- Industries catered to Automotive, Life sciences and Pharma, Hi Tech and Telecom, Consumer Durables and FMCG

<< DC, FC & RMA >>

Facilities Across: Bengaluru | Chennai | Delhi | Gurgaon | Bhopal | Hyderabad | Jamshedpur | Kolkata | Lucknow | Mumbai | Punjab | Pune | Puducherry

Total Ground Footage: 4.0 million sqft.
Handling Primary & Secondary Operations/RMA/ Spare Parts Logistics

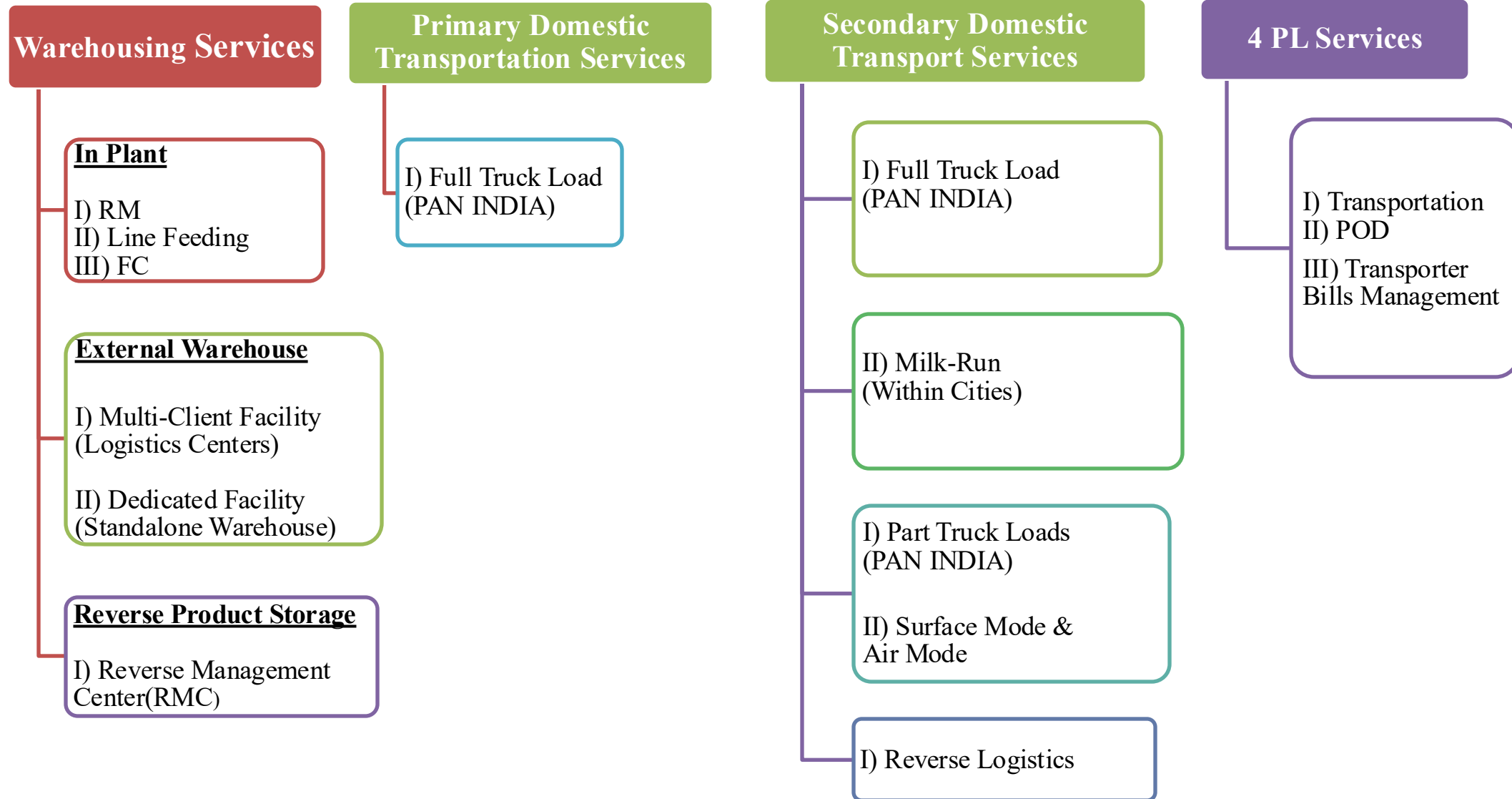
ISO 9001 QMS | ISO 14001EMS | ISO 45001 OHS | ISO 27001 ISMS | ISO 26000 CSR Guidelines - Certified with strong operational excellence

Cold Chain Warehousing

- Temperature zones with +15 to +25 degrees C, +2 to +8 degrees C and sub-zero / deep freezer operations
- Relative humidity capability: 55/+5
- Data loggers/omega sensors/hooters installed – captures periodic temperature and humidity records
- Catering to life science/Pharma-healthcare & FMCG sectors
- Reefer transportation availability for last mile connectivity
- Performing VAS – Value added services in Air con and Dust Free Environment



SERVICES OFFERED - WAREHOUSING & TRANSPORTATION



FTWZ – FREE TRADE WAREHOUSING ZONE

WHAT IS FTWZ 	<< VMI – SMI >>	FTWZ ADVANTAGES 
<ul style="list-style-type: none"> • Special category of Special Economic Zone (SEZ) governed by the SEZ Act 2005 & SEZ Rules 2006 with a clear focus on “trading” and “warehousing” • International trading hub for overseas and Indian companies • Tax concessions; • Deemed Foreign Territory 	<p>Locations: Chennai Mundra Proposed : Mumbai</p> <p>Chennai – 2.76 lac sqft. (racked & non-racked) Mundra – 1.35 lac sqft. (racked & non-racked)</p> <p>ODC Operations Cold Chain Operations Buyers Consolidation VMI –Vendor Managed Inventory.</p> <p>ISO 9001 QMS ISO 14001EMS ISO 45001 OHS ISO 27001 ISMS ISO 26000 CSR Guidelines</p>	<ul style="list-style-type: none"> • Simplified import and export procedures with single-window clearances • Multi-product, multi-vendor platform • Transactions in freely convertible currency • Quality inspection prior imports/exports • Value-Added Services (VAS)- labelling, kitting, packing, re-packing, bar coding, software installation, etc. • State-of-the-art warehouse on par with global standards • IT visibility through WMS
		

CAPITAL PROJECTS 	<< SAFETY ENGINEERING & EXPERTISE >>	OIL AND GAS LOGISTICS 
<ul style="list-style-type: none"> • Strong presence in Mumbai, Chennai • Turnkey Project management • Country-specific export compliance • Logistics plans and site surveys • Break-bulk, Heavy lift/ODC & oversize cargoes, Air Charters • Barging and multimodal solutions. • Road, sea and air transport • Customs clearance • Camp and catering services • Cargo preference compliance, Industrial Packing • Procurement and expediting • State-of-the-art warehousing, export packing, and staging facilities 	<p>With consulting, planning, preparation and execution capabilities – all in the same hands, we offer an integrated approach to ensure that we meet our customers' precise schedules, whether the components originate from one country or from across the globe. The scope of work typically involves:</p> <ul style="list-style-type: none"> • Procurement and expediting • Export compliance • 24-hour site management • Warehousing and distribution • Line item material tracking • Customs clearance • Air, sea and road transport • Export packing – domestic and foreign • Camp catering services • Industrial solutions 	<ul style="list-style-type: none"> • Procurement and expediting • Export compliance • 24-hour site management • Warehousing and distribution • Line item material tracking • Customs clearance • Air, sea and road transport • Export packing – domestic and foreign • Camp catering services
		

RAIL RAKE LOGISTICS

Rail Rake Logistics where currently moving commercial consol full rail rake loading of containers between Chennai and Nepal with the support of CONCOR in India and Nepal Lines, Nepal since the month of August 2023.

- Movement of export shipments from Krishnagiri and Sricity via trailers and consolidated in Chennai.
- Thereafter either as full rakes or half rakes were moved from Chennai to Nepal via partnership with Nepal Lines, Nepal.
- The cost savings in terms of logistics and reduction of CO₂ emissions are significantly higher.
- In the FY 23-24, the total nos of 20 ft containers handled is 422 with clients such as Knauf, Dabur, False Ceiling, Devaraj Agro, Glovis and Jagadamba Motors.
- We are further expanding our rail footprint in the immediate future.



GSA – General Sales Agent/

GSSA - General Sales and Service Agent

One of our latest products, offering worldwide coverage through Air Charter Services including commercial representation for aircraft and freighter handling, Cargo Terminal Handling and extending ground handling support to ease Foreign Carrier Operations in India towards Sales and Service.



LCL/LCL CONSOLIDATION



- Carry 97% of all LCL freight in-house via direct consolidation made possible by the extensive National Gateway Network.
- Kerry Index focuses on quick transit and constant communication, combined with the ability to seize cost-savings opportunities like consolidation and intermodal options.
- Multi Shipper or Buyer consolidation services with optimal cost benefits through our own infrastructures in India - including the merging of diverse cargoes to allow containers to be fully utilised at a lower cost and reduced transit time.
- Provide Upstream and Downstream Warehousing, Clearance and Distribution support as a complete solution.
- Direct Consolidation with extensive National Gateway Network
- Customized Solutions using own Infrastructure for consolidation

SHIPPING AGENCY

Kerry Indev has entered into a **Shipping Agency relationship with LINER PACC/PCL** that enables us to handle Vessel handling/port clearing/stevedoring amongst other significant activities since 2018.

- Being one of the largest shipping companies headquartered in Singapore - the focus is on providing shipping and integrated supply chain solutions for break-bulk, bulk, project and container feeder shipments.
- Regular calling of Indian gateway ports such as Tuticorin, Chennai, Visakhapatnam, Krishnapatnam, Kandla, Paradip, Kakinada, Gangavaram, Goa and Mumbai.
- Spotless track record of value creation and service excellence with 77 dry bulk vessels, 7 Gas Carriers, 6 tankers, 12 Multi-purpose vessels, 4 feeder/container vessels



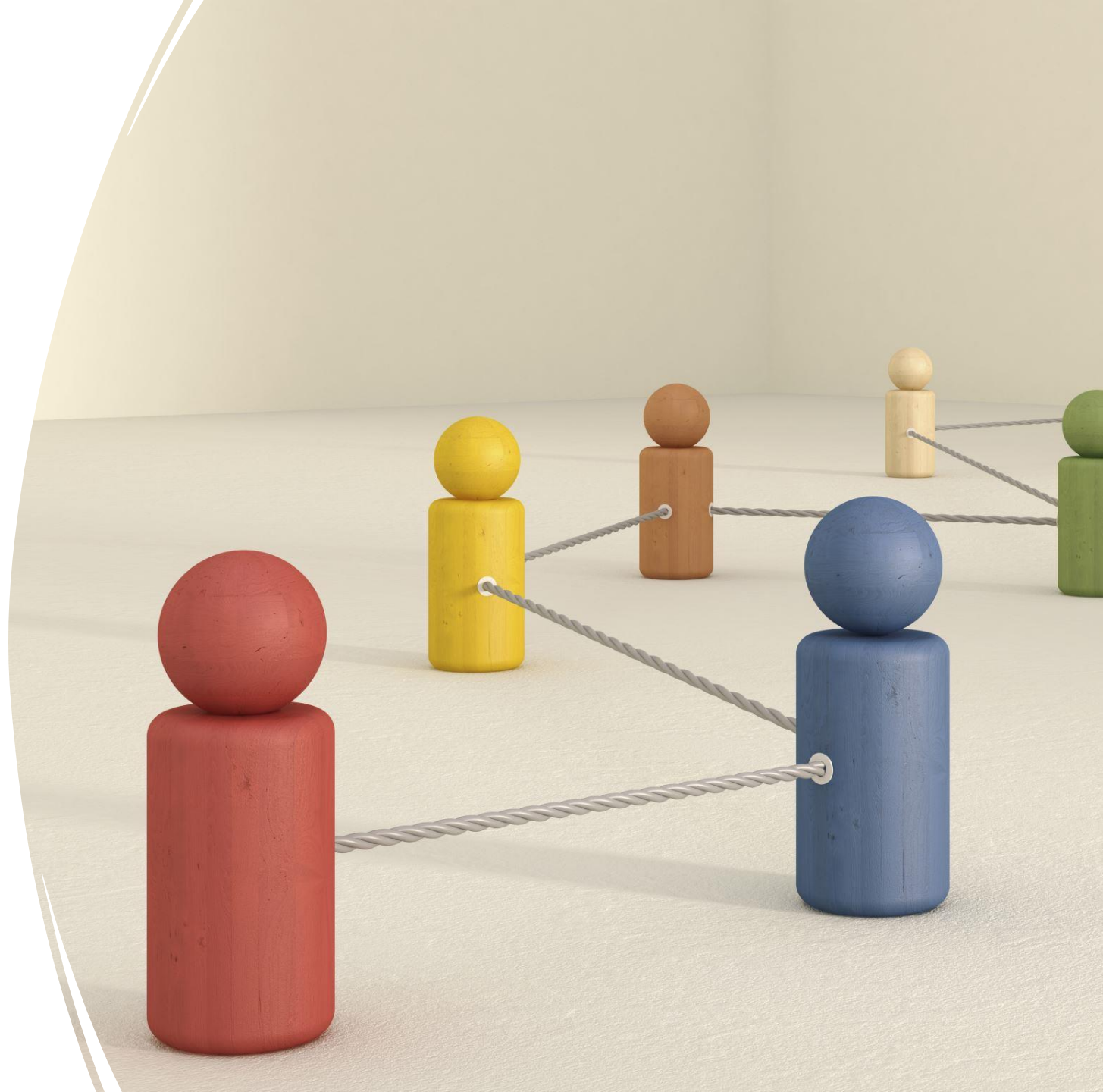
The K-Index Pioneering Excellence – Multimodality & The Integrated Flow

- ❖ With all these verticals functioning under one roof, Kerry Index Logistics are providing the integrated logistics solutions specifically curated for each client where the processes and the coordinating verticals are as elaborated in the next slide communicate with each other when multi modal integrated logistics solution comes into play – thus resulting in higher cost savings and maximum logistics efficiency with seamless flow of goods.
- ❖ We have established Control Towers - a team of highly driven personnel responsible for operational and analytical management of one or more assigned customer accounts across the multimodal operations, coordinating between global and domestic activities.



THE CLIENTELE

Spanning 4 decades of Logistics
Partnership with Top Corporate
Companies



BRAND PORTFOLIO

ELECTRONICS



AUTOMOBILES/ANCILLARIES



WHITE GOODS/FMCG



TEXTILES & APPARELS



PAPER PRODUCTS & SPECIALITY



ENGINEERING GOODS & MANUFACTURERS



CHEMICALS/PHARMACEUTICALS/HEALTHCARE



GREEN ENERGY



KI OPERATIONAL EXCELLENCE

Air/Ocean Freight

Customs Clearance
• **Including CAPEX -
New and Used
Machinery**

**Efficient Ro Ro Port
Coordination &
Clearance**

**EV Vehicles -
Specialists in Clearing,
forwarding and
Handling as per SOP**

**Infrastructure Support
– CFS/ICD/AFS**

FTWZ & VMI

Project Management

Transportation
• **First Mile To Last
Mile Delivery**

**3PL/4PL Warehouse
Operations &
Management**

**CKD/SKD Knitting
Activities**

Yard Management

**State-of-the-art Tech &
Digitization**

OUR VALUE PROPOSITIONS

“GETTING THE JOB DONE”

- All teams are available 24x7 to ensure nil stoppage of any valuable shipments and on time delivery of the cargo.

PRICE VS DIFFERENTIATION

- Proposed Value is never compromised as we capitalize on operational excellence and own infrastructure.

PERFORMANCE

- KPIs are conducted monthly & quarterly where performance decks are pre-fixed as per client need.
- Positive deviations are explored while negative ones are clipped.

RISK REDUCTION

- Aid in identifying the risk factors & Support in taking informed decisions.

ACCESSIBILITY & CONVENIENCE

- Experienced SPOC are set up for each client with clear escalation matrix provided.
- 24x7 accessibility to all levels of the escalation matrix in case of any support.

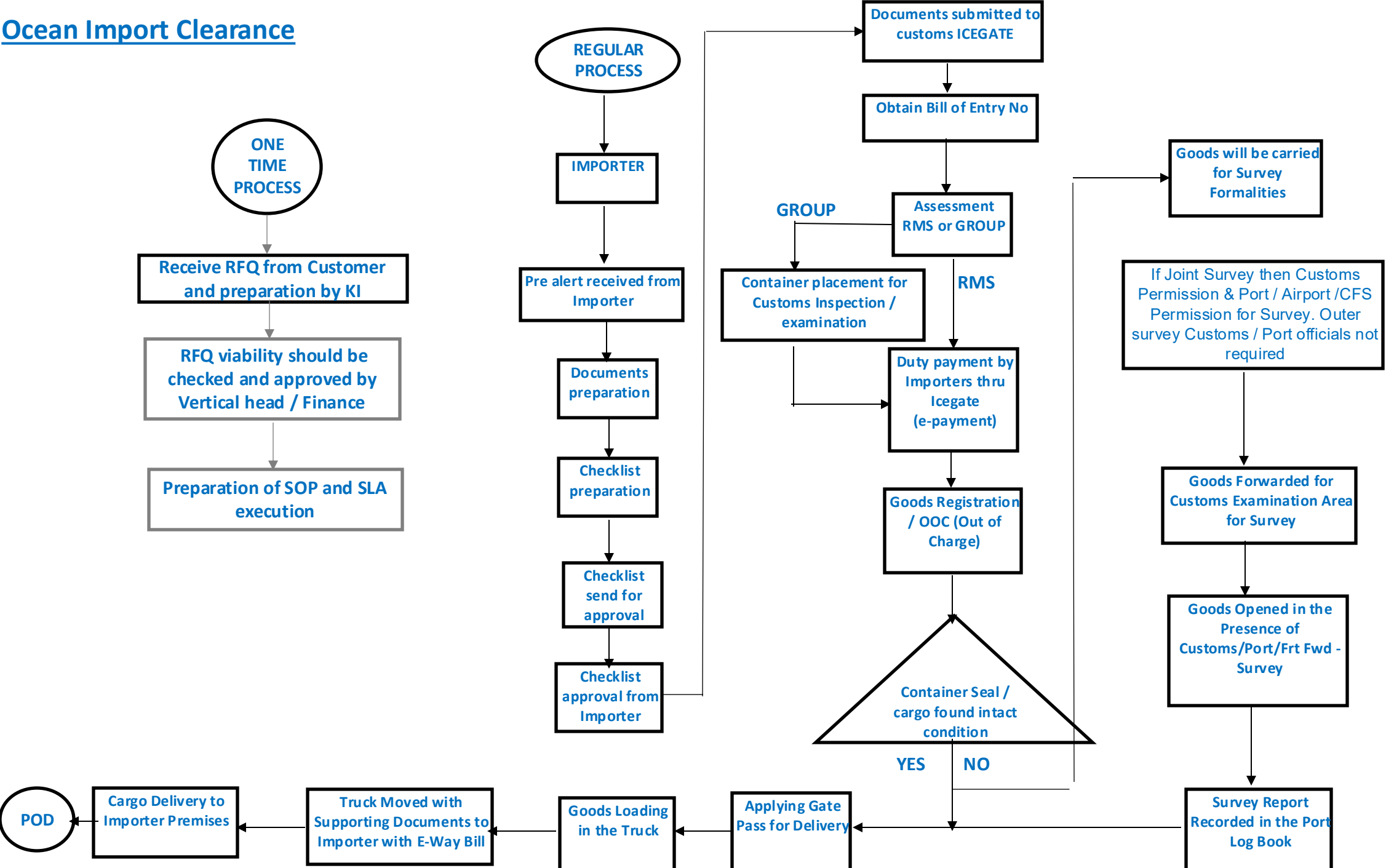
CUSTOMIZATION & DESIGN

- SOPs for each client are customized, evolving based on client need – the reason why we remain as one of the top market leaders Pan India.

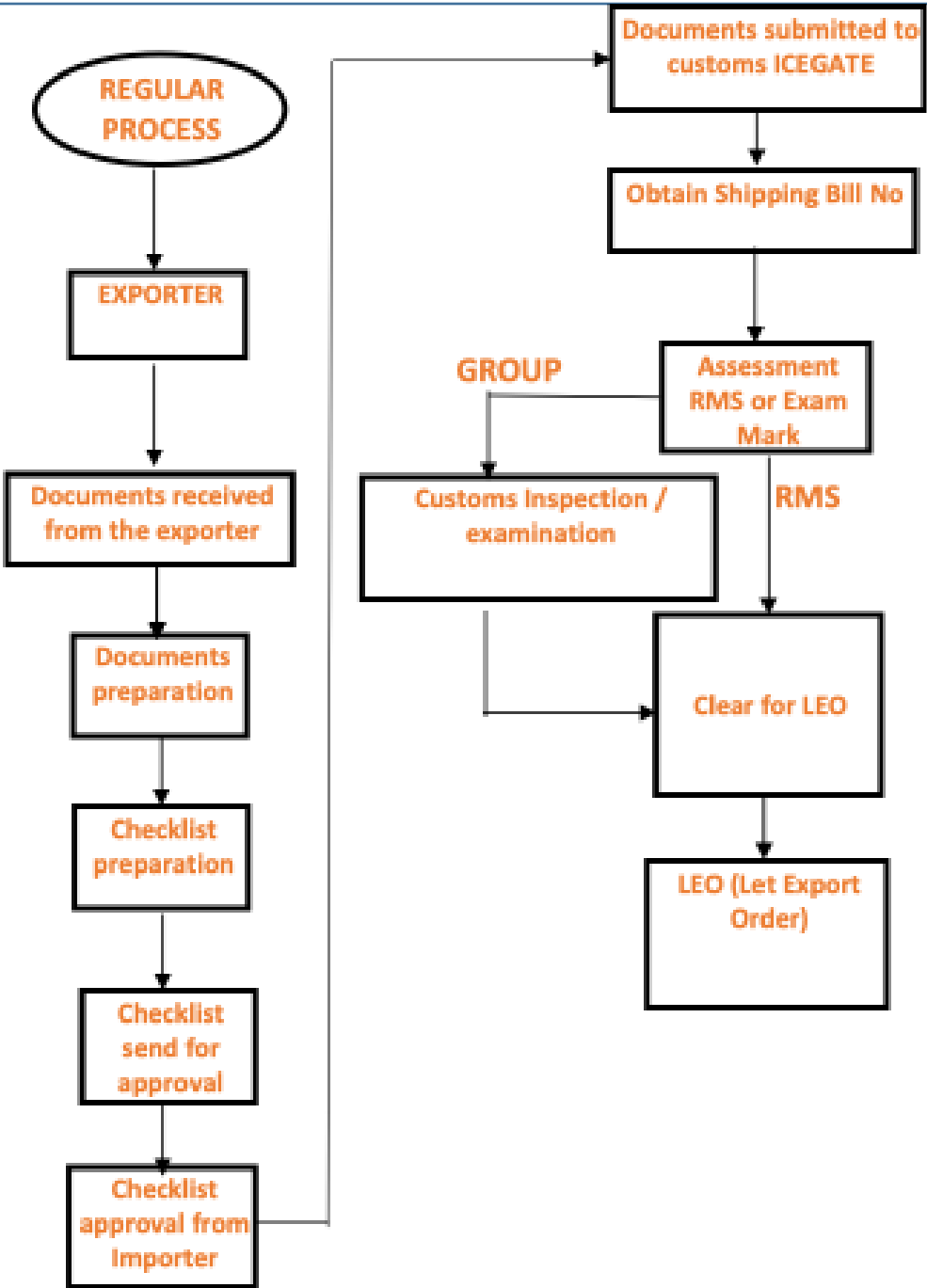


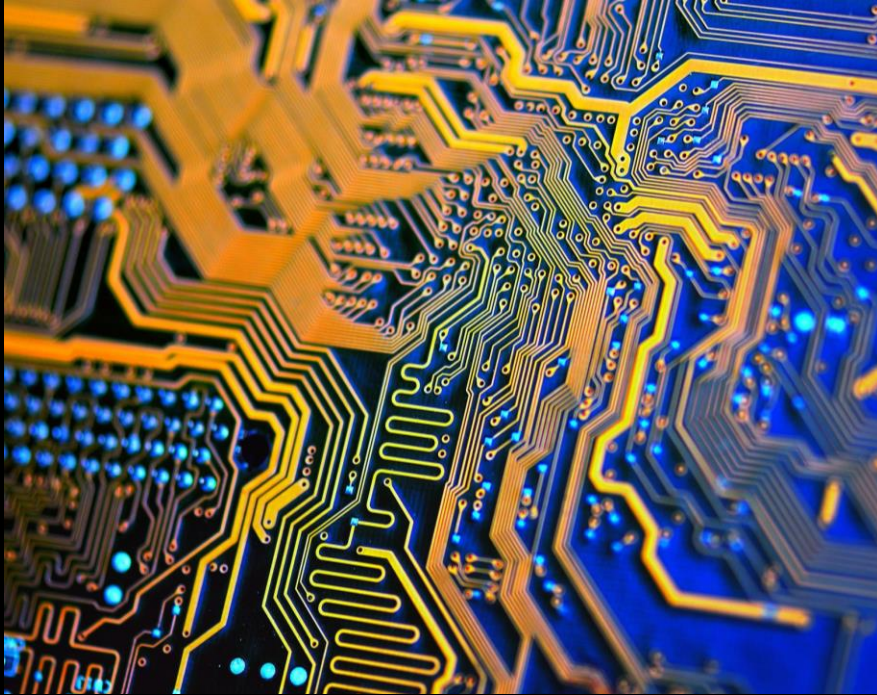
CUSTOMS EXIM DOCUMENTATION

Ocean Import Clearance



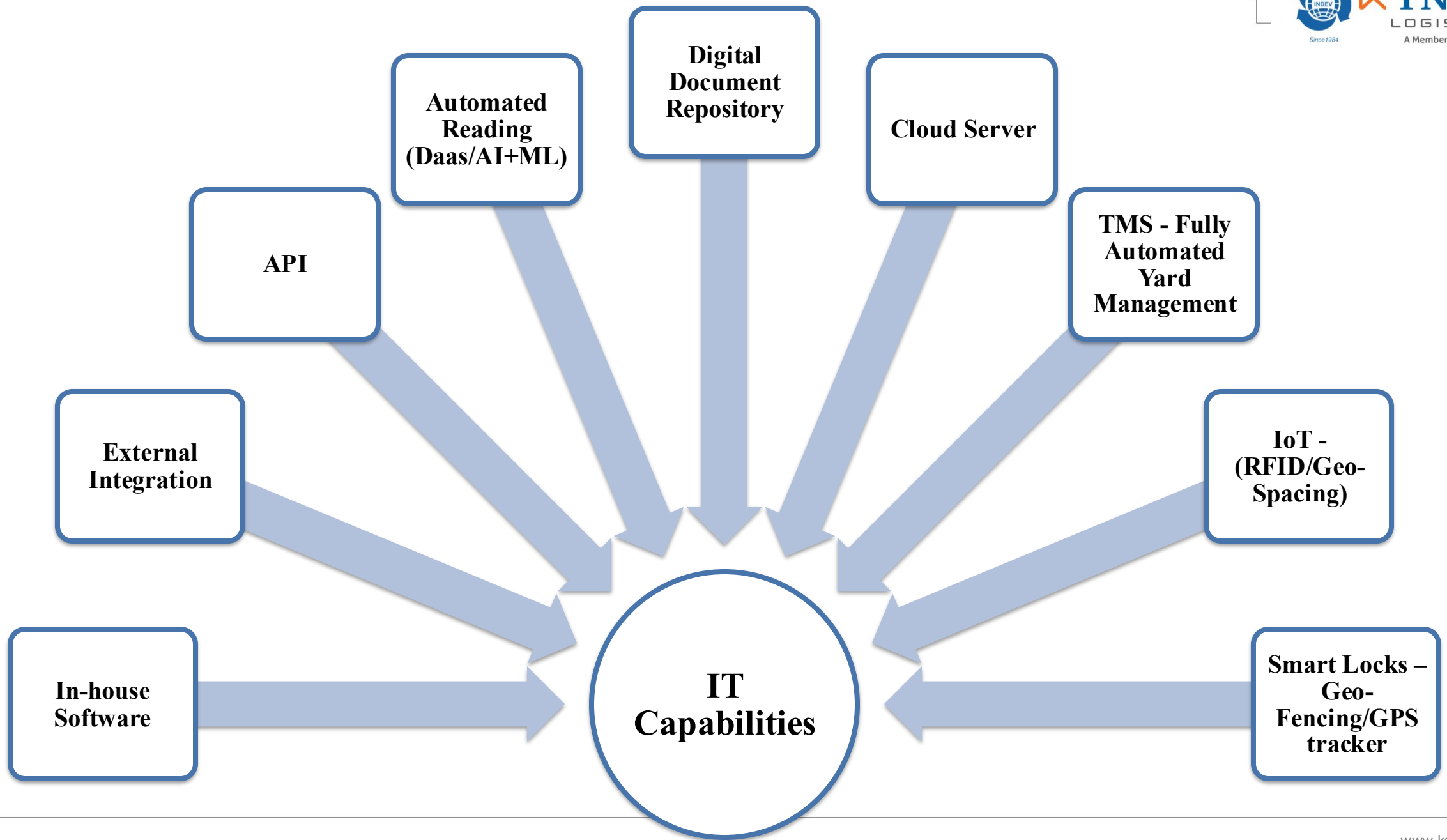
Ocean Export Clearance





TECH & DIGITALIZATION





– Where We Are And Way Forward

- ⌘ We have successfully integrated our technology platforms to ensure all our services are online.
- ⌘ For immediate support to our clients, interlinking our internal branches as well had been successfully completed.
- ⌘ In-house software developed for easy integration and security of all our clients' data.
- ⌘ The central database will act as the brain center integrating all data across all regional offices Pan India – with inbuilt cyber security to ensure safety of the client information.
- ⌘ The software with AI interface is on continuous development to keep with the Industry standards as well as to structure the overall system to be self-adaptive and evolving.
- ⌘ The central database will be developed to house Big Data → integrated with BI tool, also under development in-house.



HONORS & LAURELS



WORLD CUSTOMS ORGANIZATION (WCO) CERTIFICATE OF MERIT



AEO-LO



CERTIFICATE OF APPRECIATION



LOGISTICS EXCELLENCE, ADVANCEMENT AND PERFORMANCE SHIELD (LEAPS) 2023 & 2024



"Core Logistics - Maritime Freight Service Provider"



"Core Logistics - Air Freight Service Provider"

MARITIME EXCELLENCE ACHIEVERS AWARD

Truly a proud and monumental moment as Dr Xavier Britto received the **Maritime Service Provider Award** conferred on K-Indev Logistics at the Maritime Excellence Achievers event conducted during the 3rd Global Maritime India Summit with the virtual invoking address by the Hon'ble PM Shri Narendra Modi organized by Ministry of Ports, Shipping and Waterways, Govt. of India held at Mumbai between 17th-19th October 2023.



WINNER - CUSTOMS BROKER OF THE YEAR – 14 CONSECUTIVE YEARS





Top 50 Air Freight Forwarders 2022

No.12

Transport Topics & Armstrong & Associates, Inc.



Top 25 Global Freight Forwarders 2022

No.8

Armstrong & Associates, Inc.



Top 50 Ocean Freight Forwarders 2022

No.9

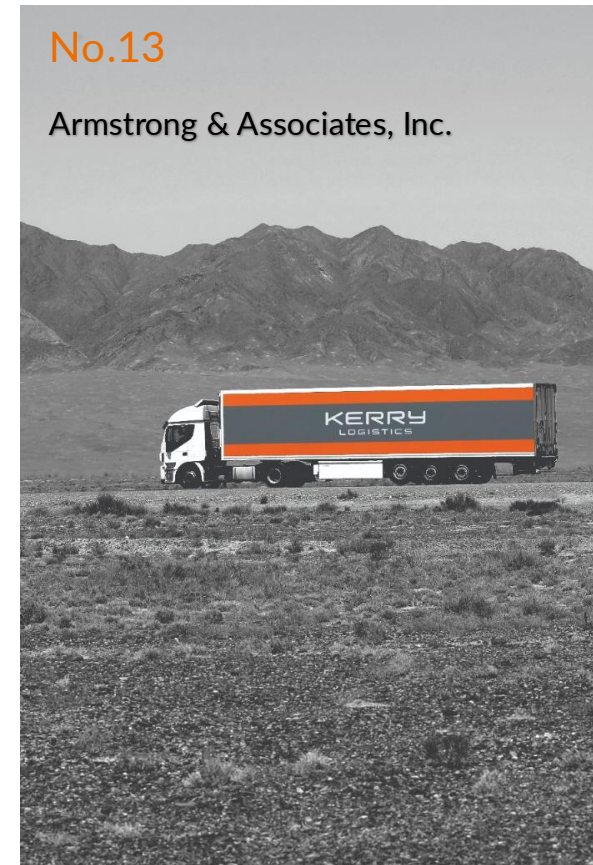
Transport Topics & Armstrong & Associates, Inc.



Top 50 Global 3PLs 2022

No.13

Armstrong & Associates, Inc.





Kerry Logistics Network's subsidiary Kerry Apex ranked number #1 Trans-Pacific NVOCC for the trade between Asia and the US in 2024, according to Datamyne data measured in TEUs.

Best CHA awards from His Excellency Governor of Tamil Nadu Shri. Surjit Singh Barnala one time and again His Excellency Governor of Tamil Nadu Shri. Rossiah one time.



First Transshipment Air Cargo (AFS) award by EXIM from the Chief Commissioner of Customs



Best CHA Award from Hon'ble Vice President of India



Exim Hall of Fame CHA Award for the consecutive 10th year



FTWZ - Excellence Award



15th Edition South East CEO Conclave and Awards 2024



Best Custom Broker of the Year (Export/Import)



FTWZ of the Year Award



Kerry Indev Logistics received the honorary award **For 40 years of facilitating the trade through excellence in integrated logistics services** at the 14th All India Maritime and Logistics Awards (MALA) 2024 on 21st August 2024 held at Mumbai, India.





Winner of the **Logistics & Supply Chain Excellence Award** at the 14th All India Maritime and Logistics Awards (MALA) 2024 on 21st August 2024 held at Mumbai, India.

Kerry Index Logistics was declared the winner of **3PL Company of the Year Award** at the 2nd edition ACE Northern India Air Cargo Conclave & Awards 2024 amidst grandeur on 27th September 2024 at New Delhi, India.





Kerry Indev Logistics received the Prestigious Award from Daimler India Commercial Vehicles (DICV) at the **DICV Supplier Awards** for commitment, excellence and consistent best performance in services such as ICD, Custom Brokerage, Inland transportation, 3PL and FTWZ – enabling to achieve business targets.

It is notable that Kerry Indev under the exemplary leadership of Dr S Xavier Britto has remained consistent in their performance in terms of quality service levels and compliance, across all verticals from the year 2013 with appreciations from the top management of DICV.





Kerry Indev Logistics received the **Safety Excellence Award (2023-24)** as **Safe Customs House Agent** by TVS Motors Group on 4th March 2024 recognizing outstanding complaunce and safety protocols followed as per client's requirements.



Honour of Excellence

awarded to

**KERRY INDEV LOGISTICS
PVT. LTD.**

in recognition of their continued support to
our Glass Business Operations
through the pandemic years 2020 & 2021.


AR Unnikrishnan
Managing Director
Glass Business


Tapas Padhi
Team Leader-Purchase
Glass & Solutions



Changes for the Better

CERTIFICATE OF APPRECIATION

Proudly presented to

M/s KERRY INDEV LOGISTICS PVT LTD (ICD-IRR TEAM)

Your concerted efforts in timely clearance of huge shipments has
made a difference. We admire your dedication towards your profession.


Naohiko Hosokawa
Director & Business Head
Living Environment Division


Masakazu Obata
Assistant General Manager
Living Environment Division



Kerry Indev Logistics was honoured with the appreciation award presented by **M/s Bharat FiH Technology** and its subsidiaries M/s Rising Stars Hi-Tech and M/s Wowtek in appreciation for the consistent service and dedication for the Year 2023 and 2024 for the Air CHA/Transportation services.

The award was received by Dr S Xavier Britto and Team amidst the presence of Head-India Logistics and Customs Team of Bharat FiH at Chennai on 20th January 2025.



COMPETENT . COMPETITIVE . COMPREHENSIVE



THANK YOU