



ANALYZING RAILWAY REGULATORY TEXTS

2025/05/22



Our mission : Safety &
Interoperability of the railway
system.



French National Safety Authority



What is a TSI ?

TSI : Technical Specifications for Interoperability

=> European regulations for the definition of a single railway network

⇒ 11 texts

⇒ CCS TSI :

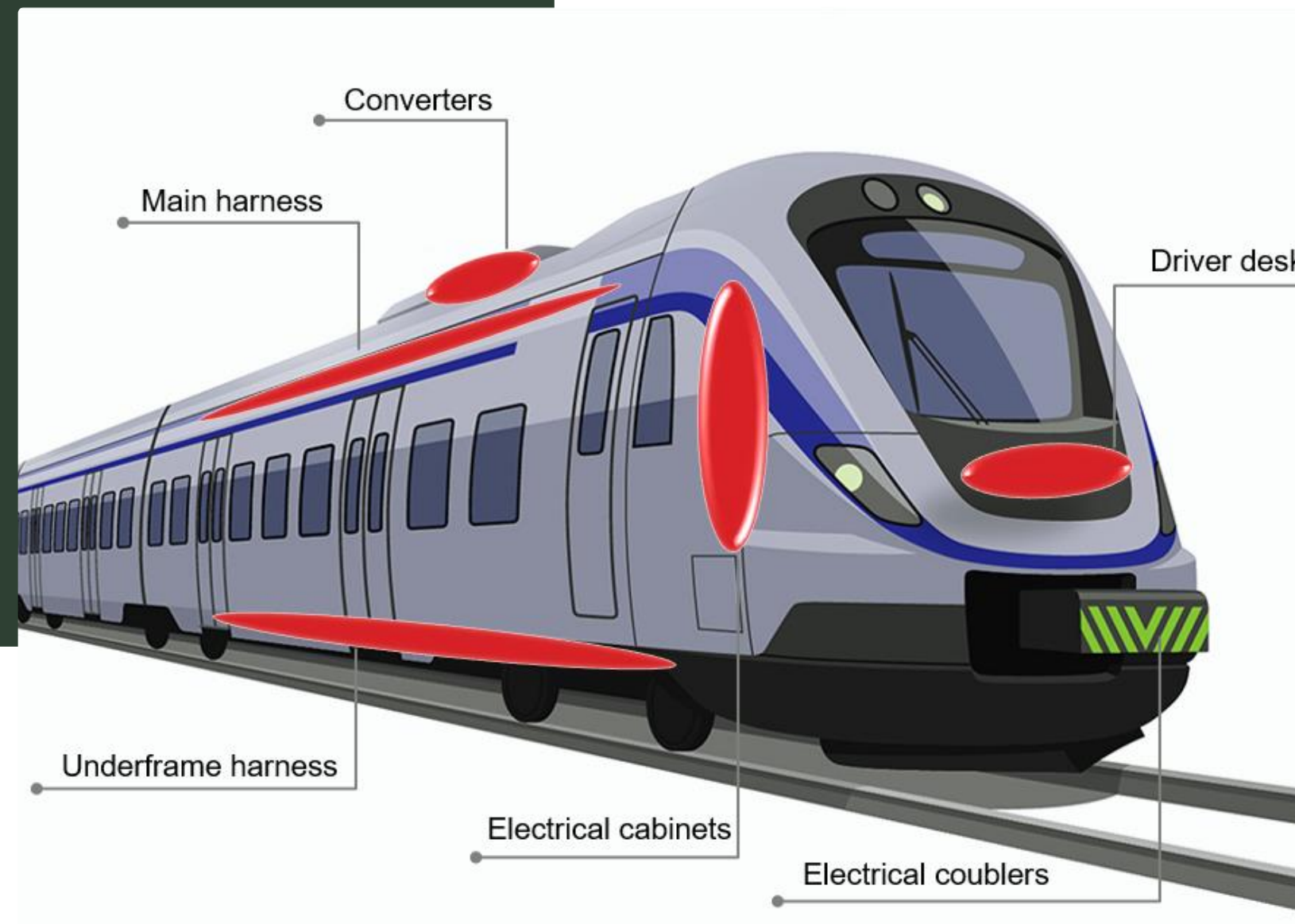
⇒ 180 pages

⇒ More than 100 annexes

⇒ Update every 2 years

Particularities of the railway sector

- Specific & technical vocabulary: often not supported by general AI models
- Specific to European standards and benchmarks
- High reliability requirements

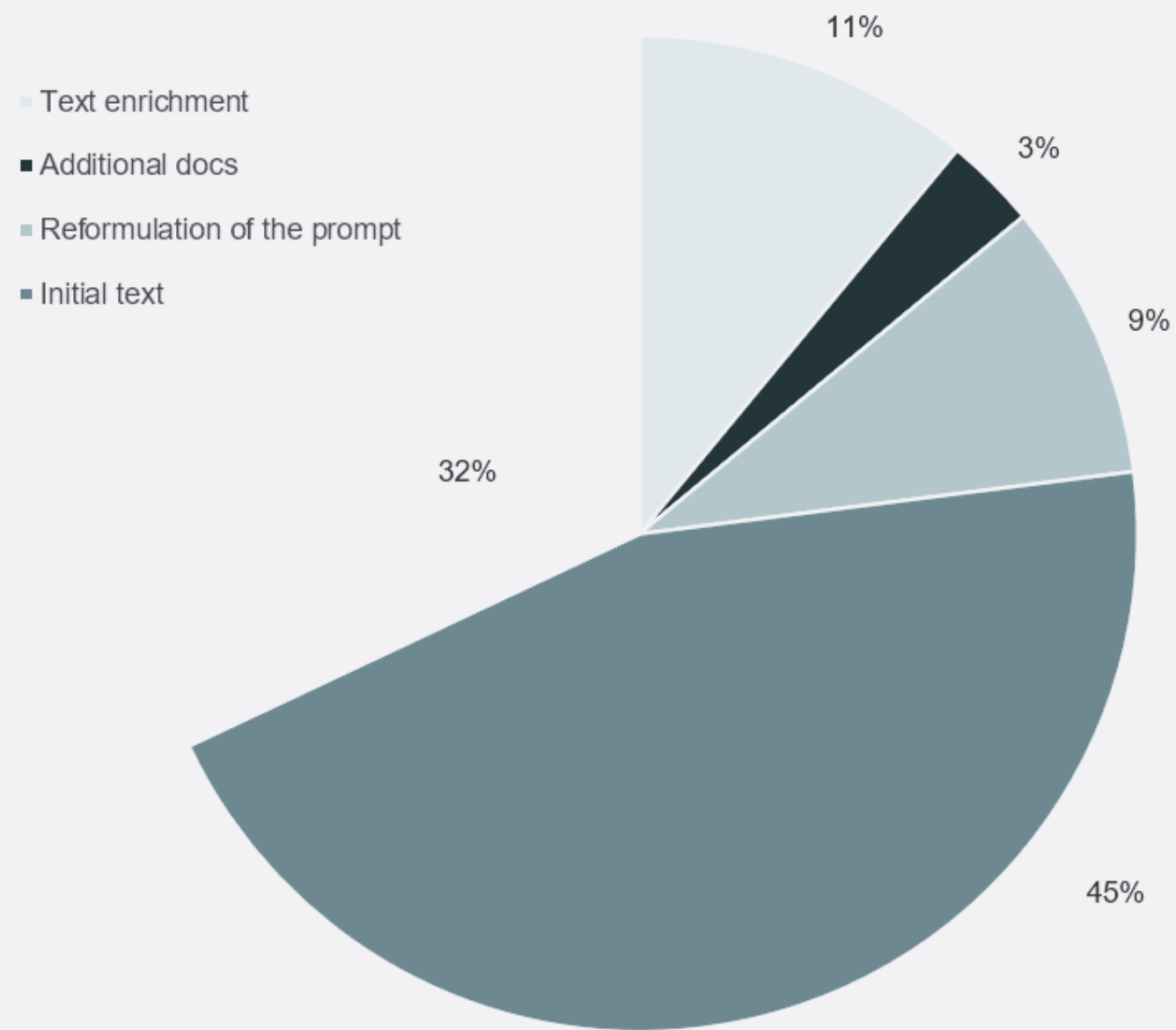




Use cases

- **Regulatory text analysis** : extracting constraints, comparing versions, etc.
- **Regulatory drafting support**
- **Mapping of obligations for a project or system**
- **Assistance with proofreading technical documents**
- **Pre-analysis of the authorization file**: verifying completeness, extracting key data (explicit constraints, supporting documents, etc.)

First results of the analysis of the CCS TSI



Evolution of reliability

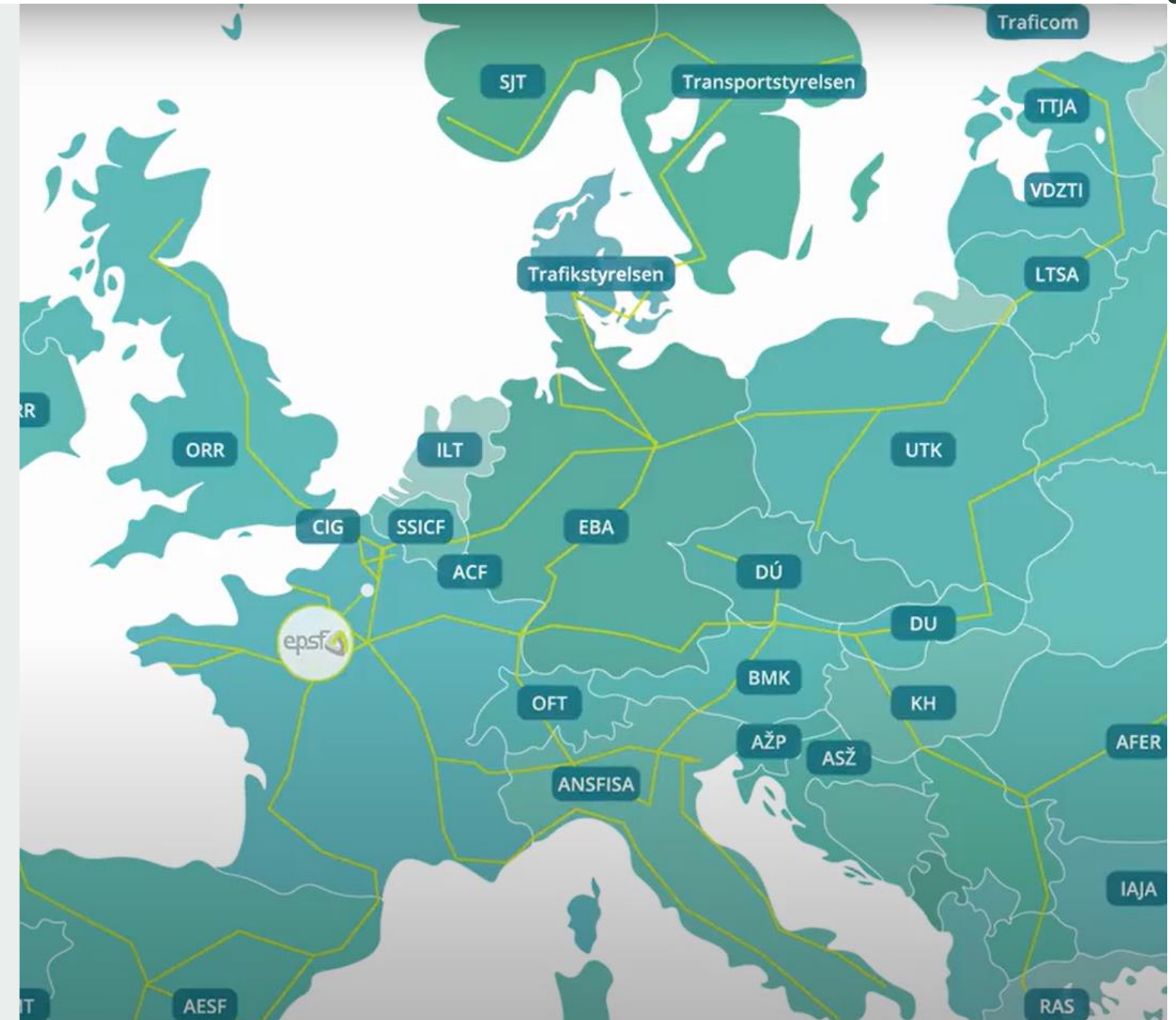
Limitations identified:

- Manage tables and diagrams
- Completeness of answers
- Only usable by experts of the subject
- Affirmative answers, while the truth is more nuanced

Today

- Continue the work
- European resources
- European partners

Our goal is to respond to a European need.





THANKS FOR YOUR ATTENTION

SEBASTIAN
GANZ

&

MARINA
JEANNIN

sebastian.ganz@securite
-ferroviaire.fr

marina.jeannin@securite
-ferroviaire.fr