

BOOKLET 2025  
Garment presentation





## ROSY SIGNORELLO CEO | DESIGNER | STYLIST

Since 1984, I have been the owner of the historic Aladino's store in Bussoleno. In recent years, I have chosen to complement the retail business with my own production line, the result of research and experimentation, exclusive garments made from printed fabrics that combine craftsmanship, identity, and creativity.



## 2025 FASHION COLLECTION ALADINO'S APPAREL



This booklet presents all the garments carefully created over the past years, enhanced by unique photographic prints made by professional photographers to highlight the most iconic places in Piedmont, and personally signed by me as a guarantee of authenticity.

A handwritten signature in black ink, likely belonging to Rosy Signorello.



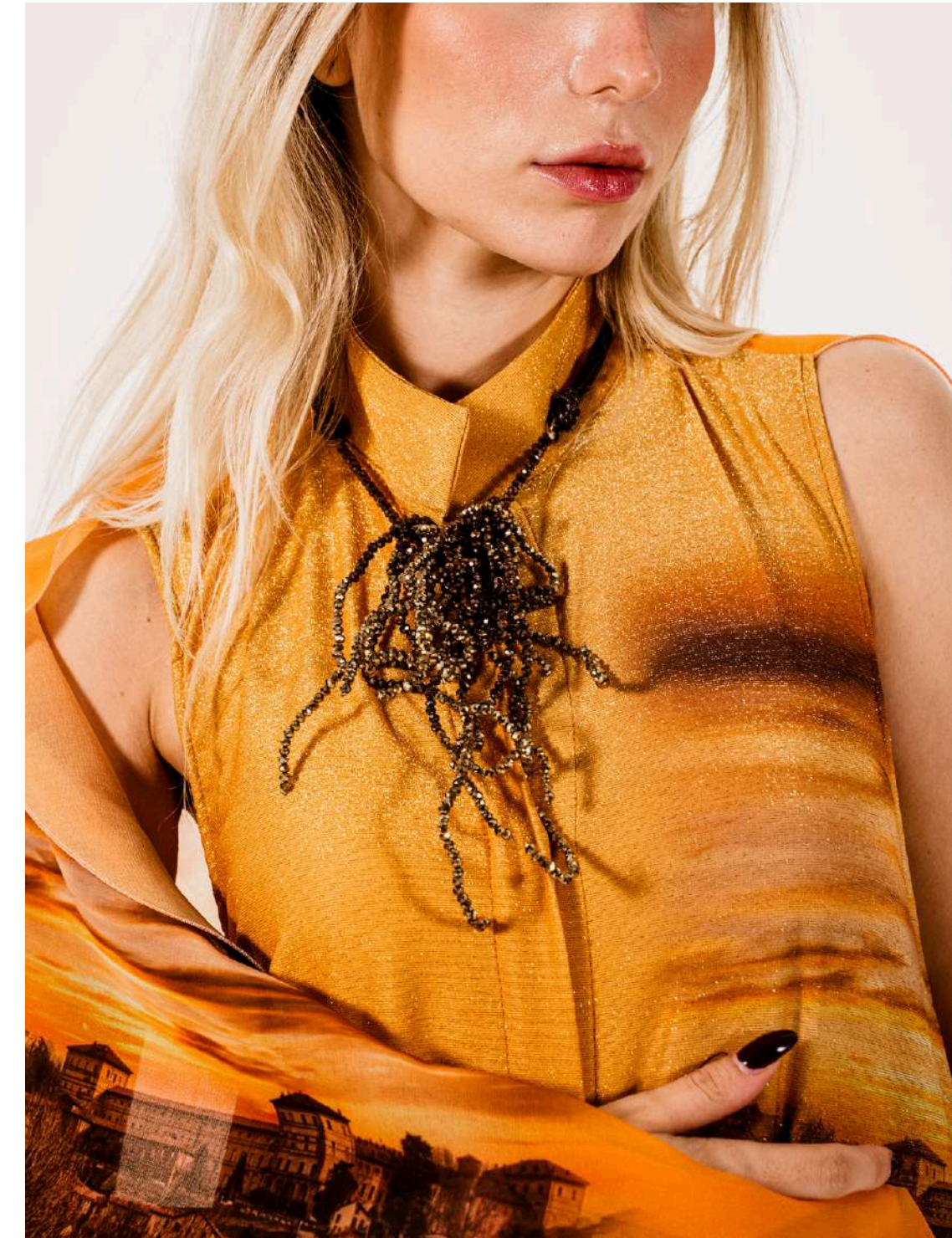
MONCALIERI CASTLE  
A dialogue between lightness  
and presence.

The garments feature an elegant and contemporary aesthetic, with a warm palette in shades of ochre and amber.



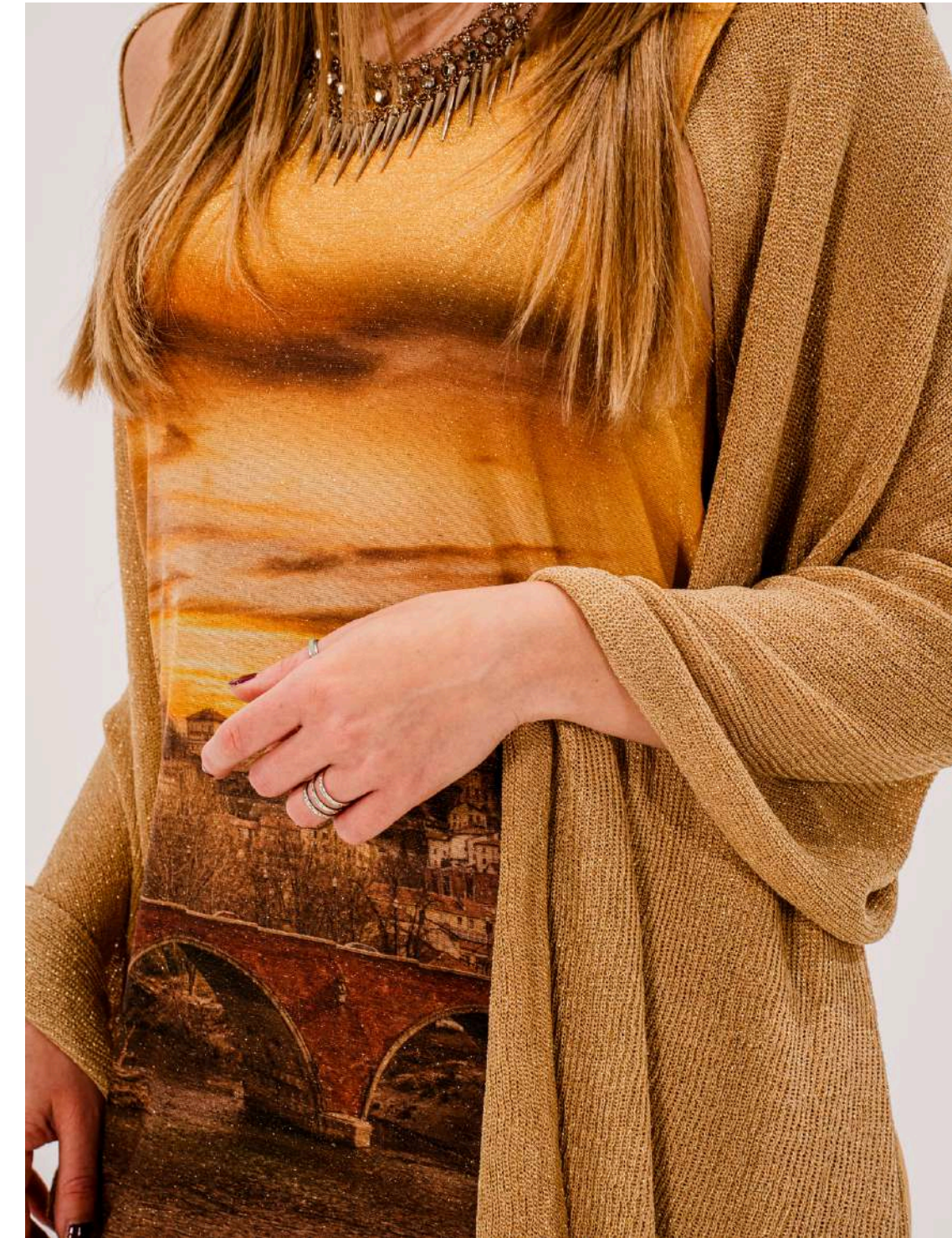
Soft and light, they glide over the body's lines, caressing them with care.

The first dress, long and flowing, features cape-style sleeves in sheer chiffon that create a light and theatrical movement.



The warm tones and sand-colored details evoke desert dunes shaped by the wind.

The second, shorter and more structured, interprets the same vision with a contemporary and spontaneous attitude.



Both feature a print of Moncalieri Castle, located in the province of Turin.





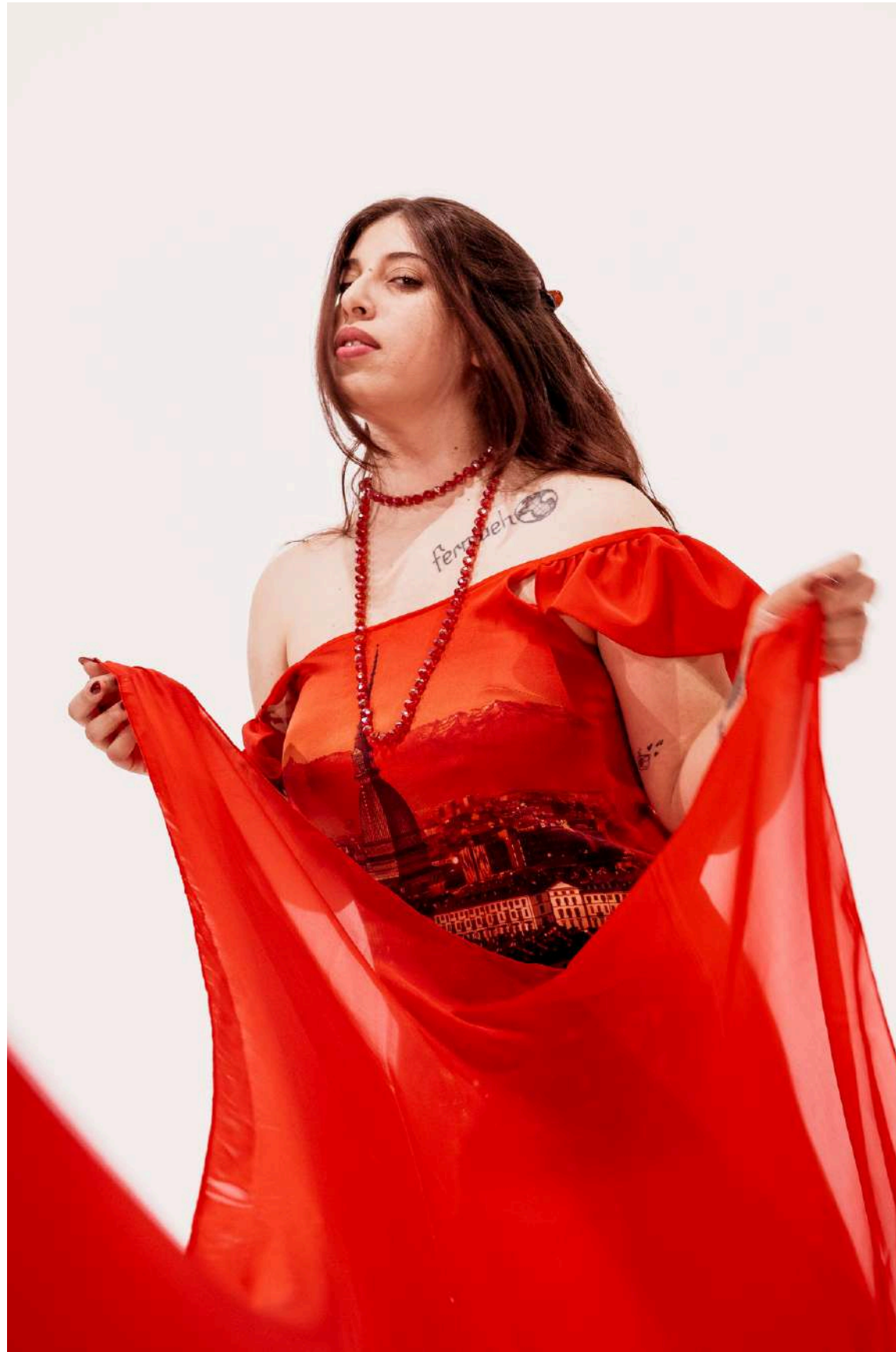
MOLE ANTONELLIANA  
A play of intensity and lightness

Four variations that play with vibrant shades of red and blue, balancing strength and fluidity.



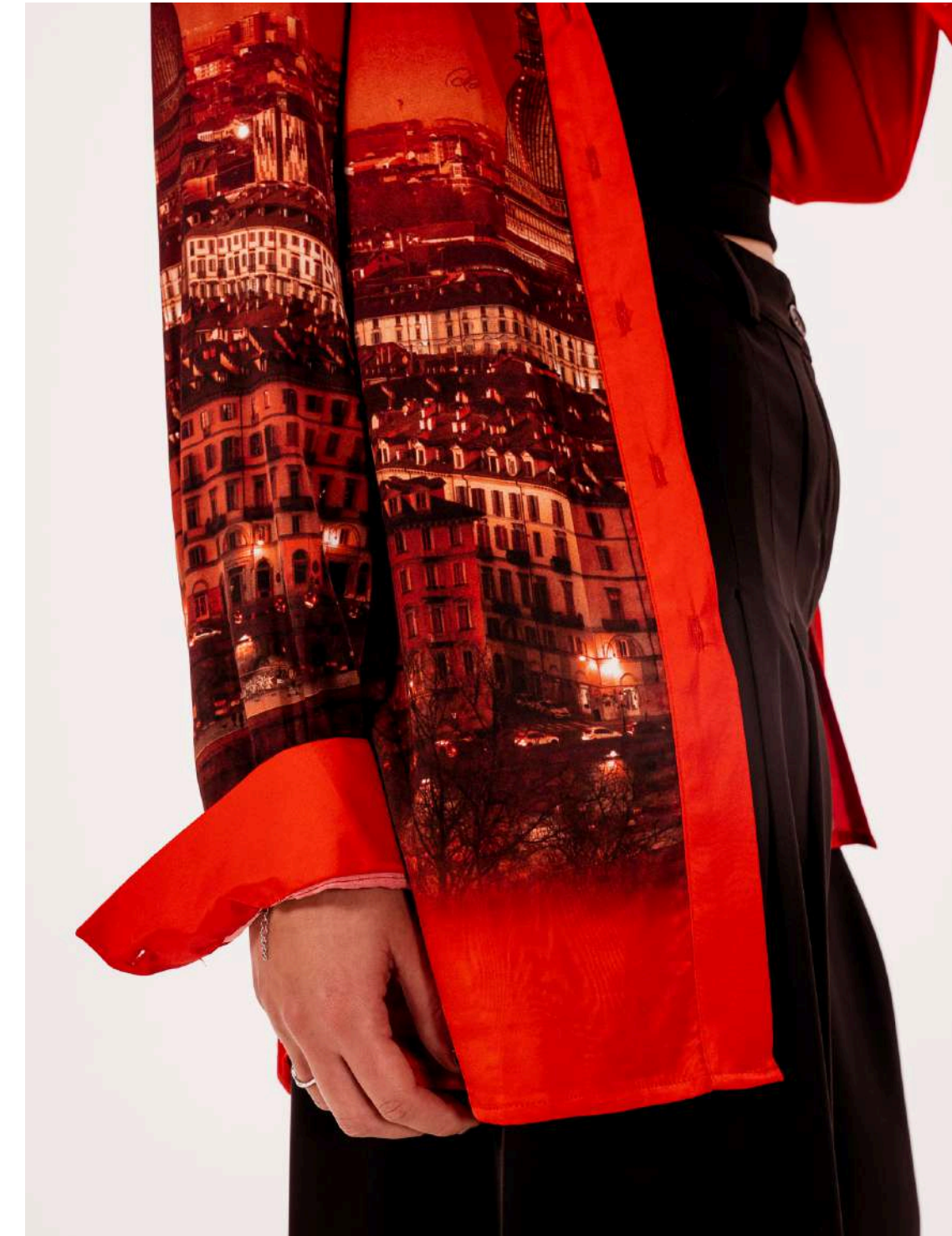
The wide cuts and sheer fabrics add movement and dynamism.

A flowing, full-length dress that explores elegant volumes and draping.



The vibrant red and landscape print merge into a powerful, feminine image, symbolizing energy and identity.

A strong look blending the shirt's masculine structure with the fabric's flowing elegance.



The photographic print in shades of intense red adds warmth and character, reinterpreting elegance with a contemporary twist.

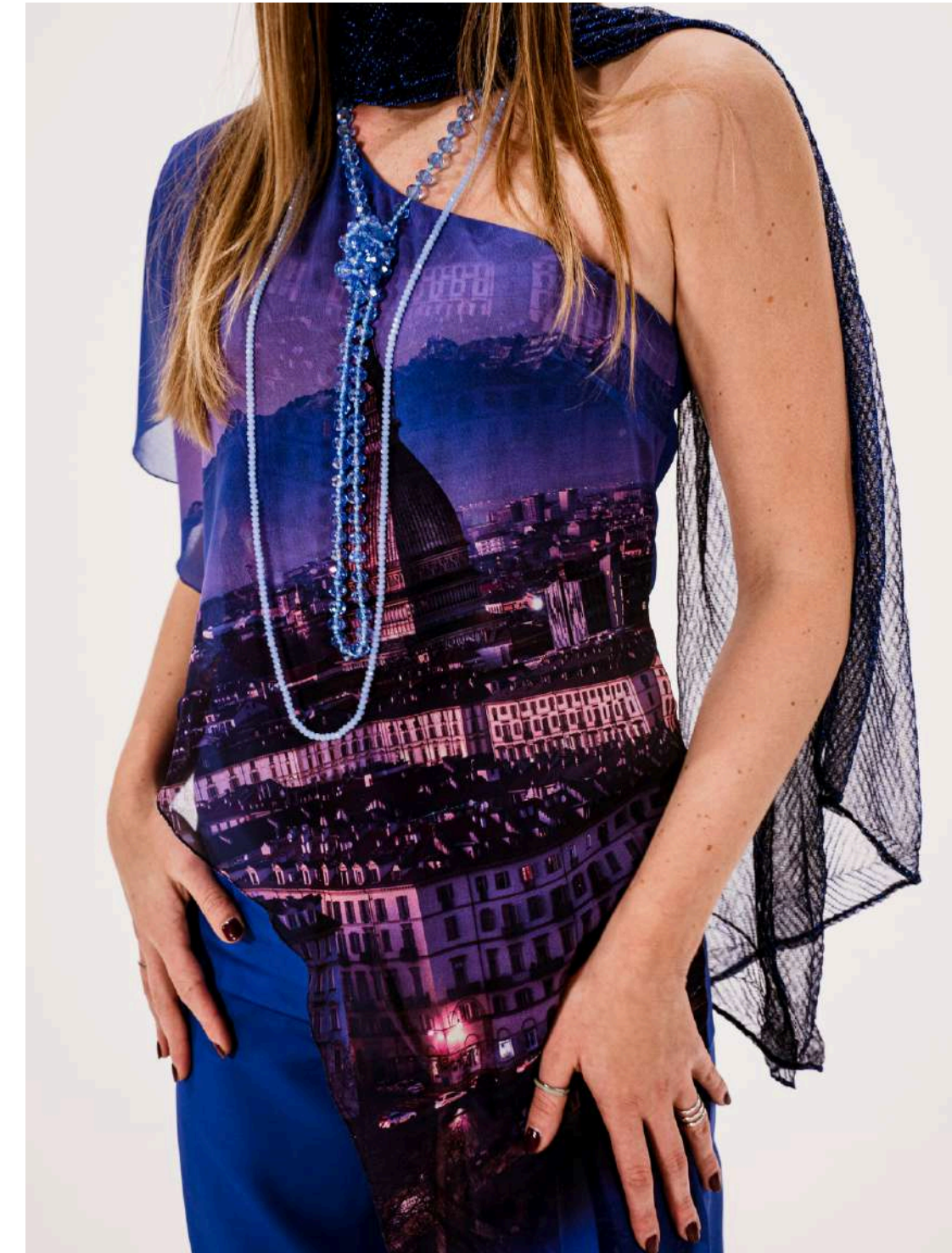


A flowing, full-length dress featuring gentle lines and an off-shoulder cut.



The photographic print in shades of violet and midnight-blue takes center stage. Elegant and luminous, it evokes the evening atmosphere of Piedmont landscapes.

An ethereal and modern look, built on light transparencies that interact with the photographic print on the fabric.



The deep blue evokes the night, transforming light into movement.





MURAZZI  
Warm, soft hues harmonize  
with the vibrancy of life.

A warm and luminous palette dominates this series, where orange becomes a symbol of energy and identity.



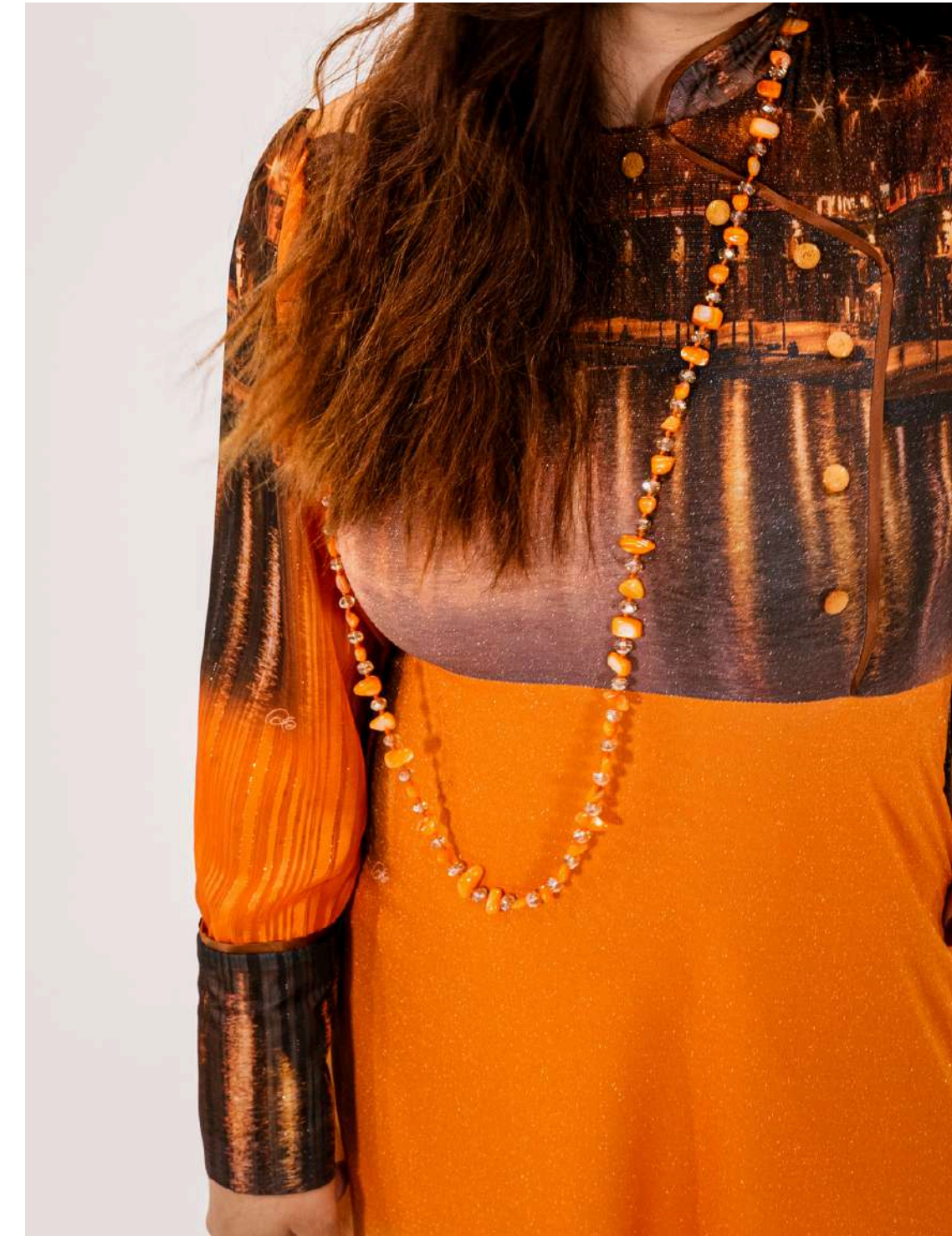
The lines intertwine with soft cuts and flowing curves, creating a dialogue between elegance and intensity.

A refined, sophisticated look blending satin's lustrous finish with touches of orange on the sleeves.



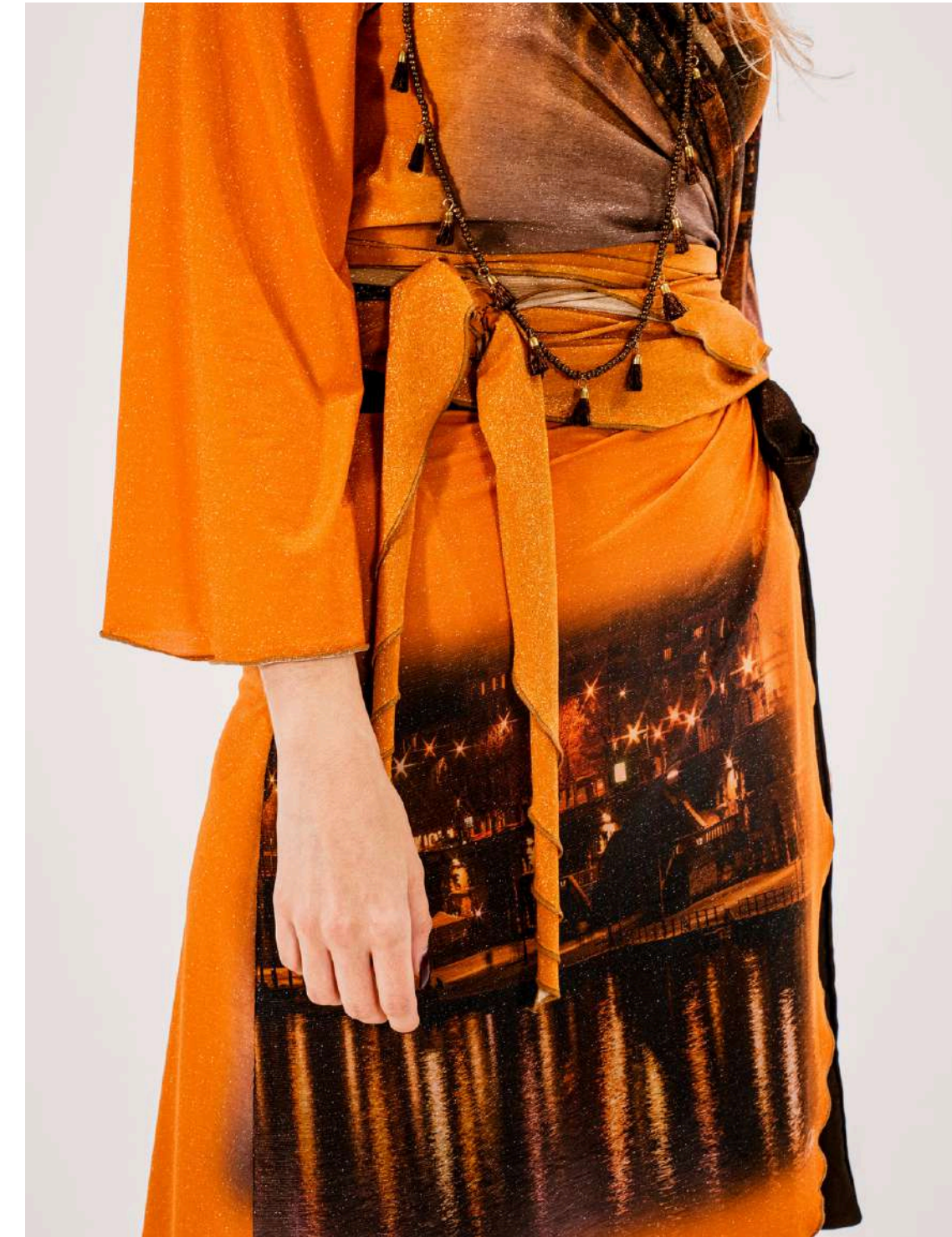
The contrast between the softness of the fabric and the intensity of the colors creates a delicate, contemporary balance.

A midi dress with a bold spirit, where orange blends with the photographic print in dark tones.



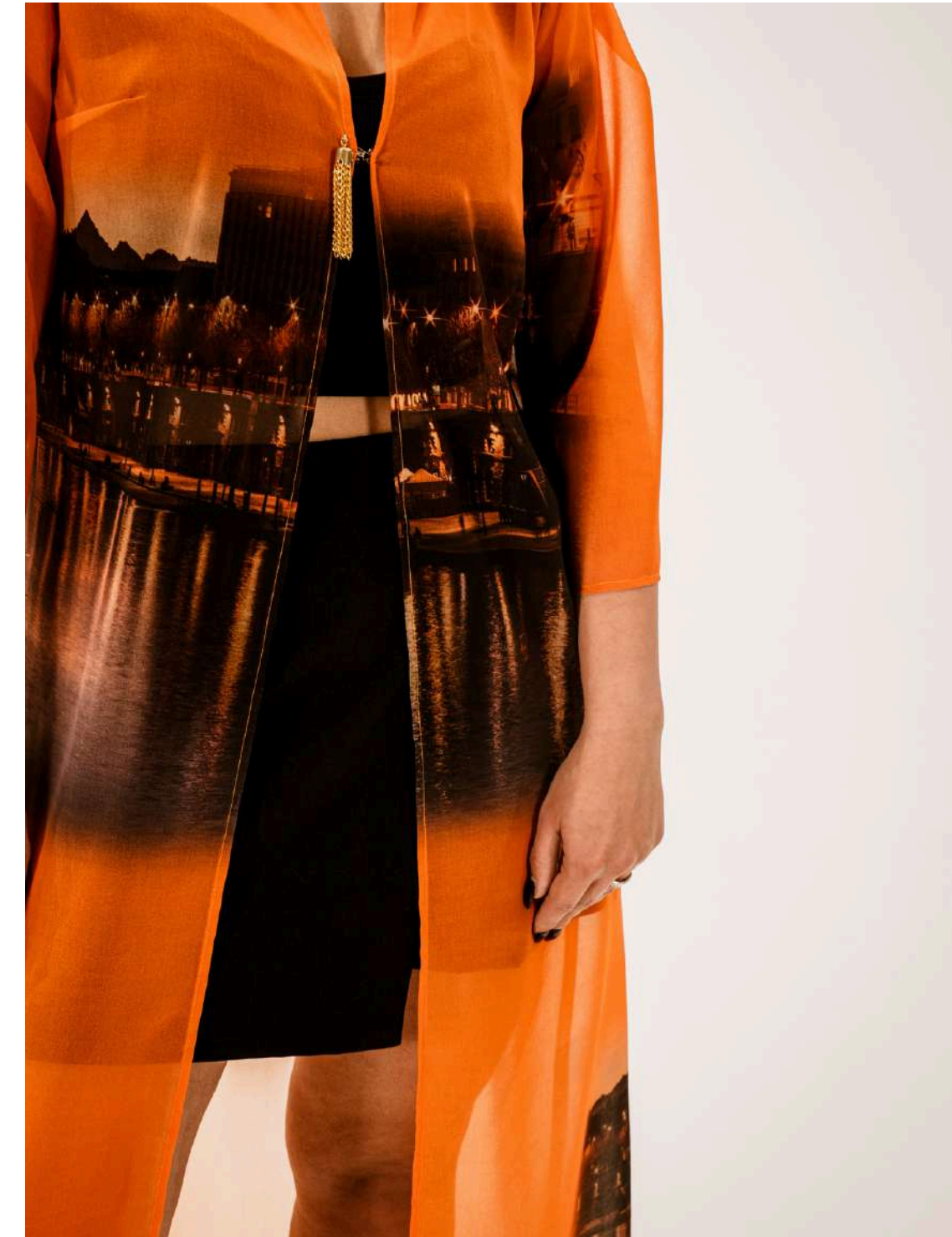
Soft and luminous, it embraces the print.

A fluid, full-length dress with minimalist lines, illuminated by a vibrant orange that enlivens the photographic print at the base.

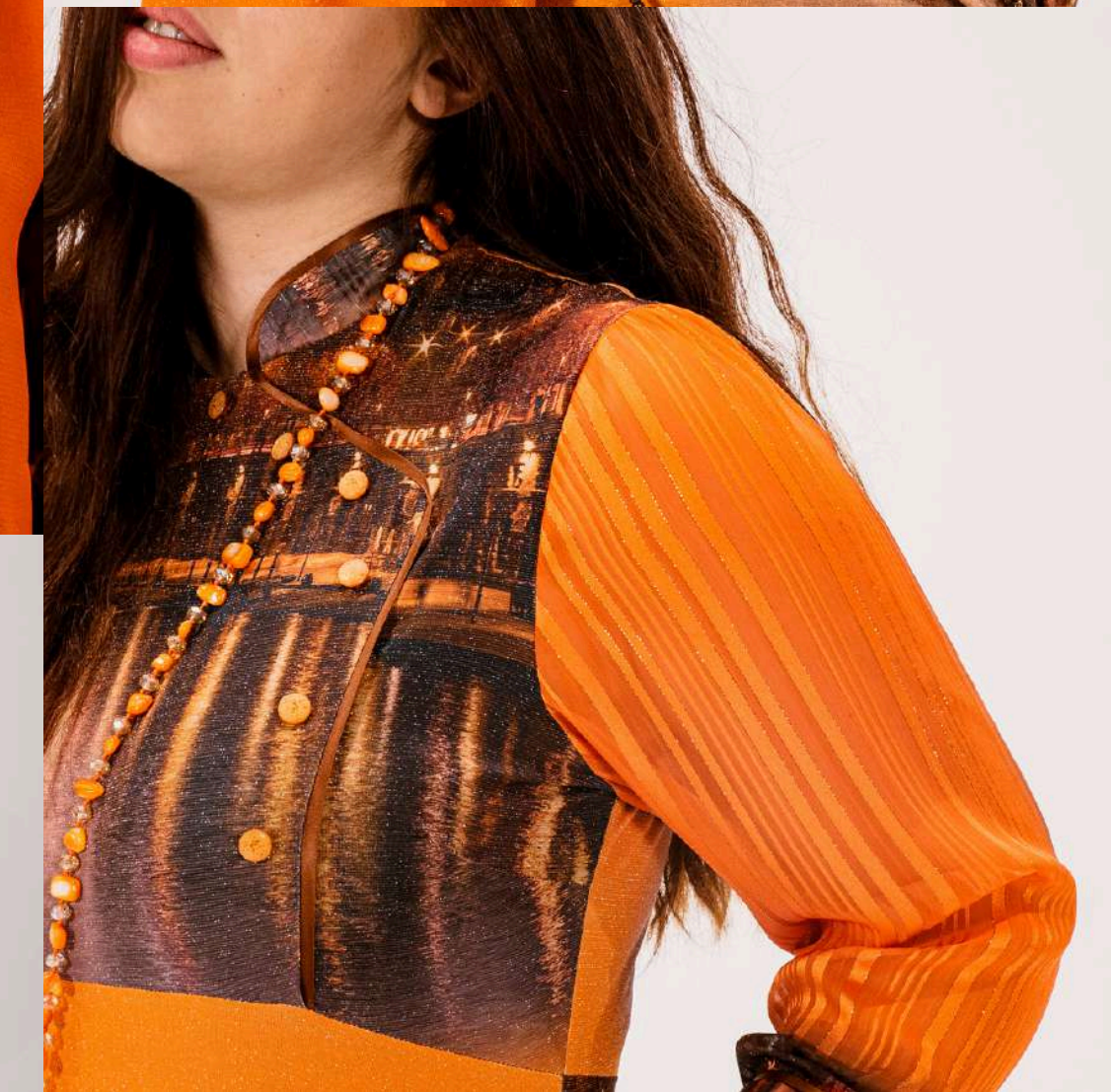


A streamlined silhouette invites movement and light, radiating warmth and sophistication.

A piece with a strong and sensual character. The orange chiffon kimono wraps the body lightly, revealing glimpses of the dress underneath.



The photographic print becomes a distinctive mark of elegance and personality.





SACRA DI SAN MICHELE  
Celebrating femininity and  
effortless beauty.

This series explores the transition from day to night through the fusion of lavender and orange, two tones that meet like light and shadow on the horizon.



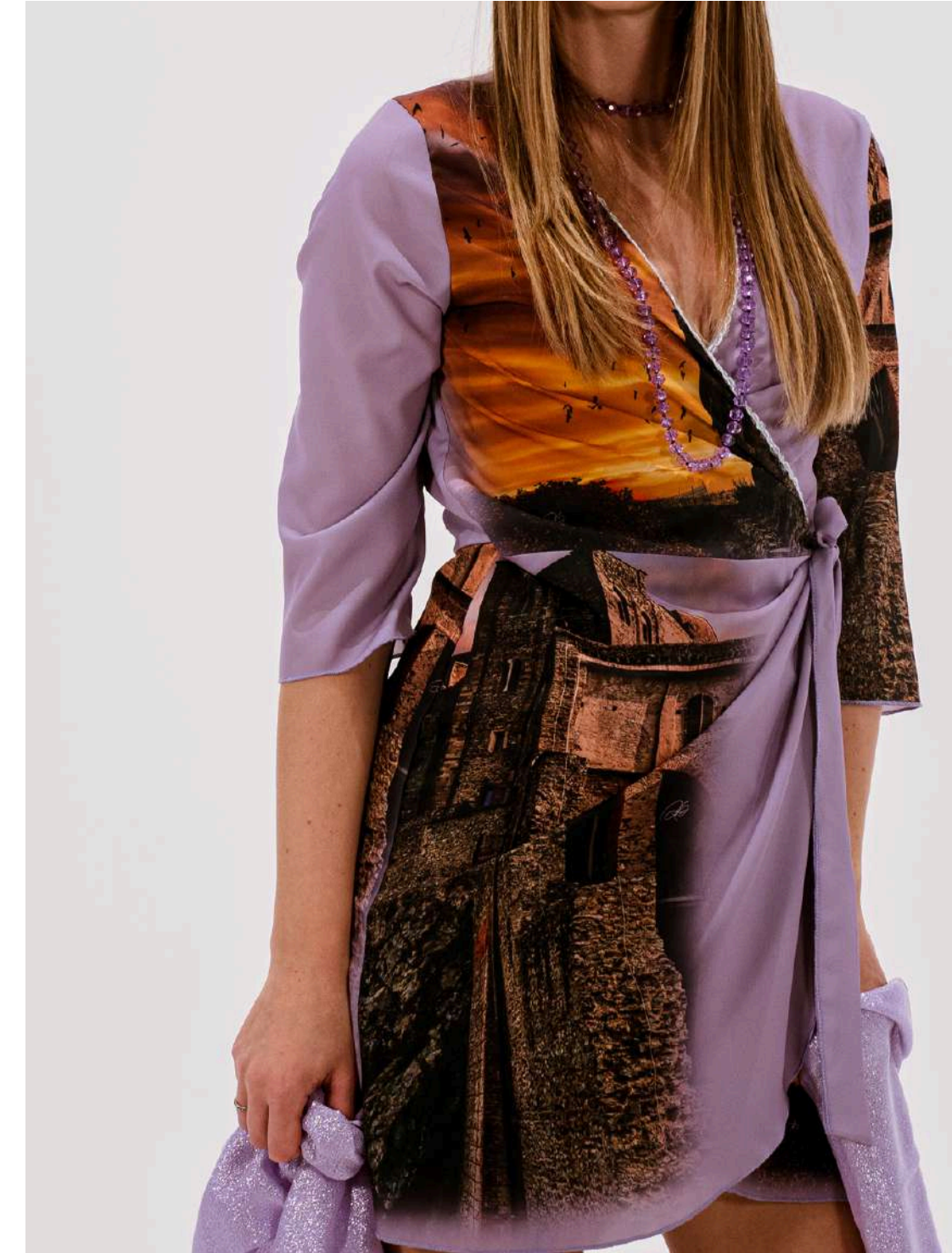
The collection plays on the contrast between soft shapes and powerful images, combining lightness with a commanding presence.

A flowing lavender chiffon gown with a high collar and soft sleeves, draping the silhouette with lightness.



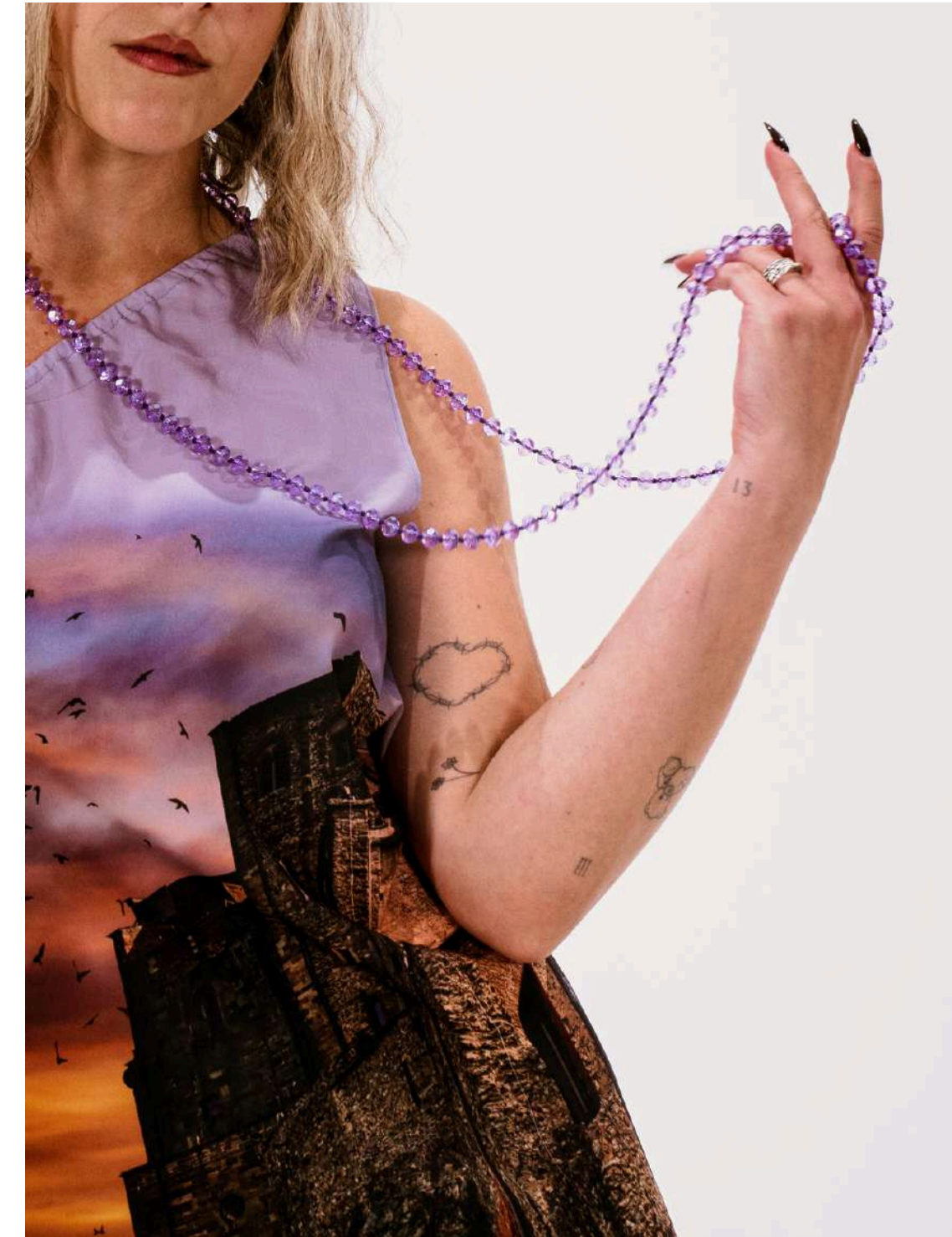
Ethereal lilac meets orange-tinged imagery, striking a balance between subtlety and visual impact.

A lavender satin wrap dress in a short length, featuring a side belt and three-quarter sleeves.



Structured tailoring and layered details bring movement and femininity, giving a confident, urban take on lightness.

A flowing, sleeveless gown with a minimalist cut and gentle, elegant drape.



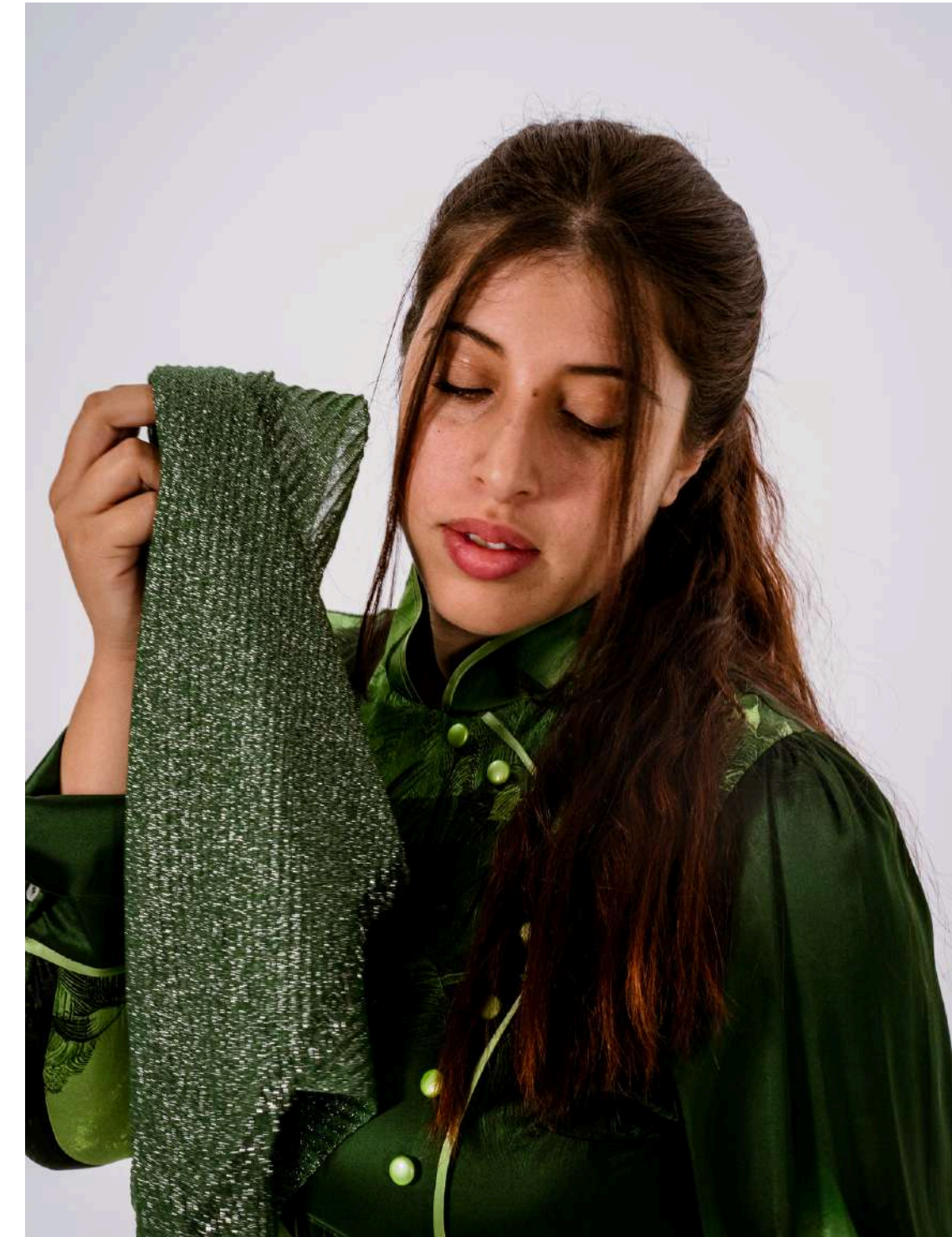
An amethyst necklace accentuates the look's natural luminosity.



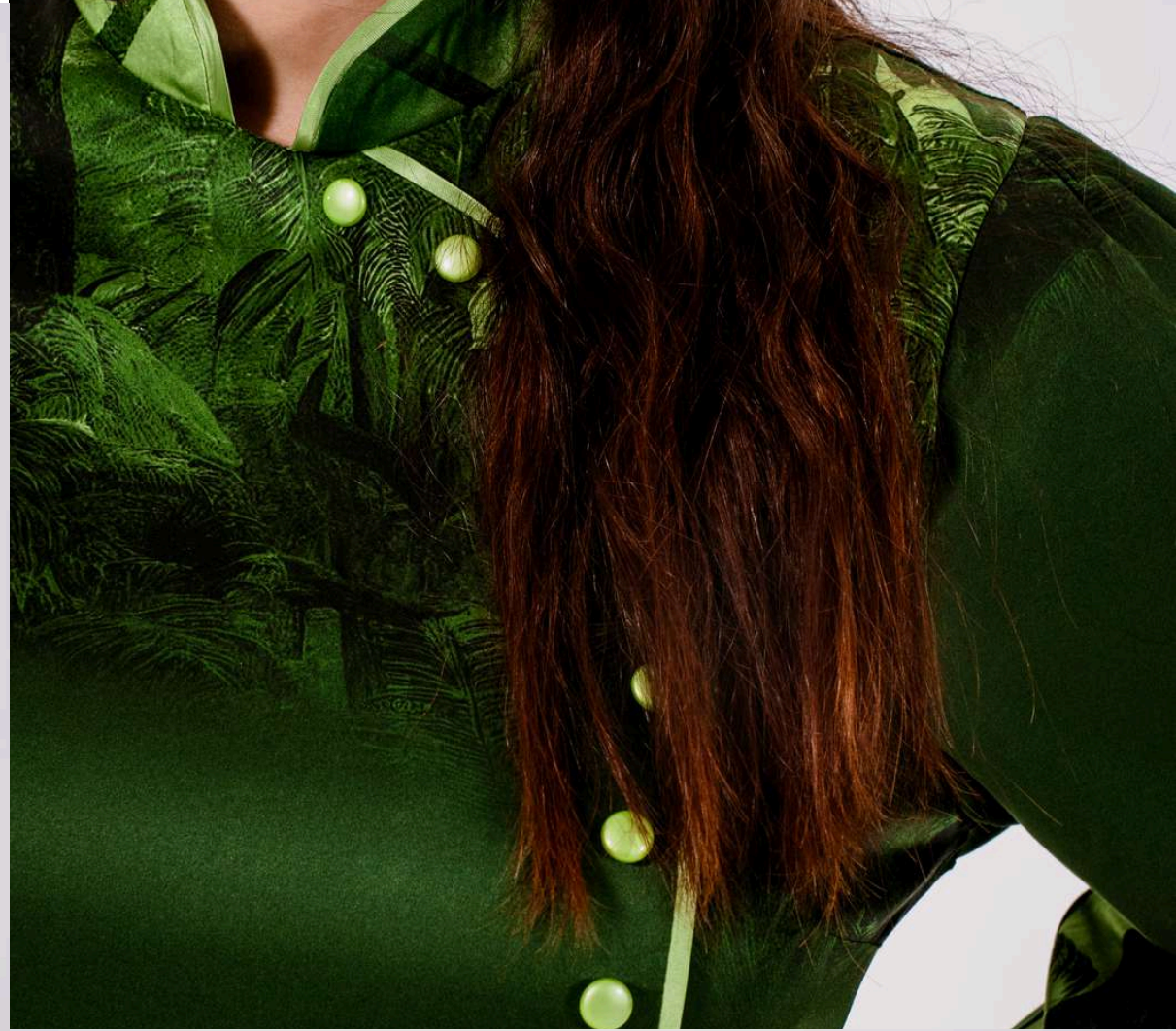


GREEN - NATURE  
The green of nature blends with the soft  
lines of the fabric.

A flowing, satin gown in forest green and lime tones, this dress embodies a seamless dialogue between fashion and nature.



At once contemplative and assertive, it captures nature's quiet power and its capacity to refresh the viewer's perspective.





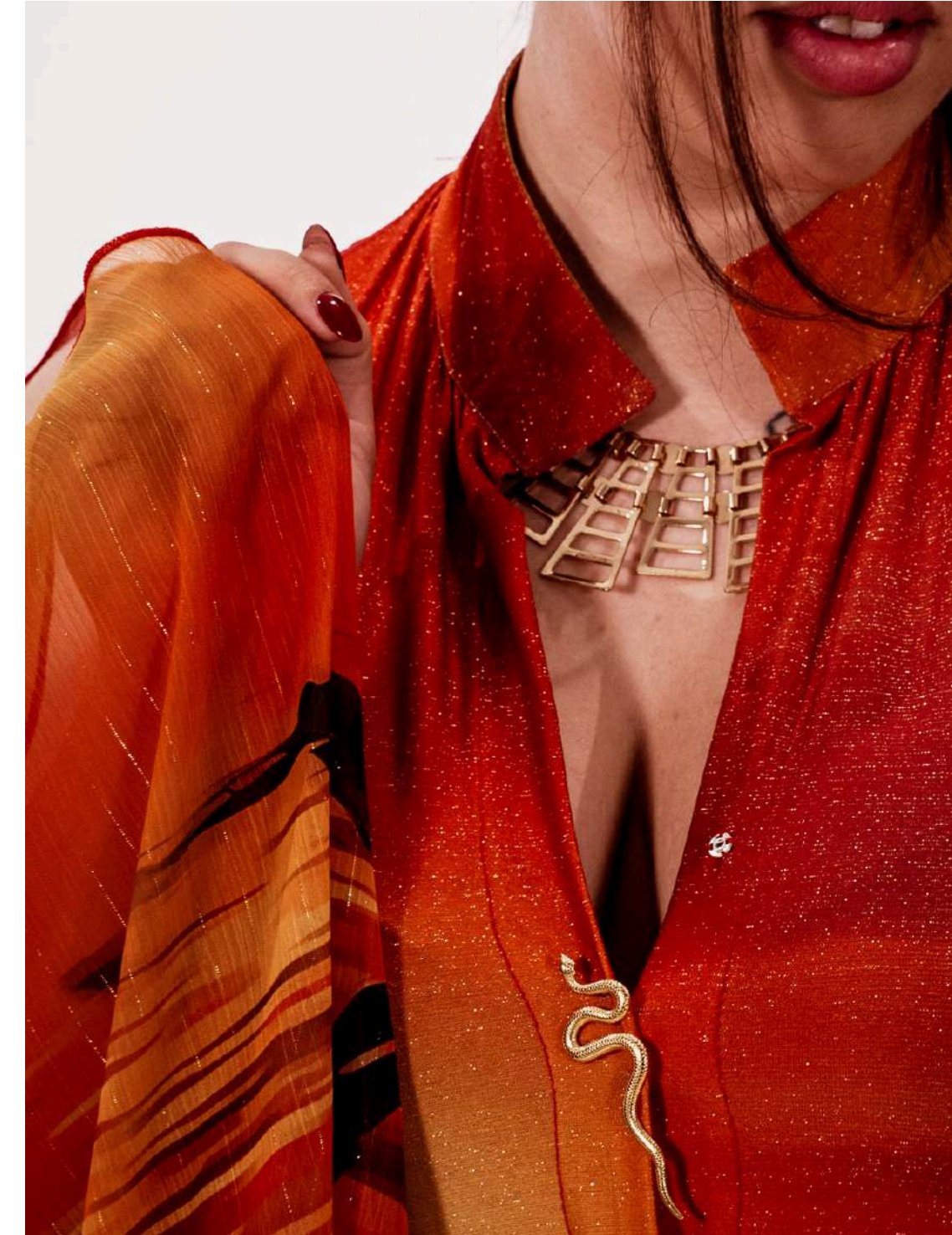
RED - NATURE  
Passion intertwines with flowing  
lines and the warm hues of sunset.

The collection is defined by a warm and intense color palette, dominated by scarlet red, burnt orange, and shades of black and ochre.



Flowing fabrics with varying opacity and transparency, paired with voluminous shapes and generous sleeves, create a sense of dramatic elegance.

A long dress with a deep V-neckline. The central body is fitted, but the defining feature is the presence of wide drapes that envelop the figure.



A statement necklace with gold pendants adorns the décolleté. The hair pulled back highlights the neckline and the garment's grandeur.

A long, straight-cut dress that offers a more structured and modest fit.



Voluminous long sleeves with a gentle wrist puff, paired with a high, rounded neckline for a regal yet modest elegance.

A long dress with wide, flowing sleeves, made from a significantly lighter and more transparent fabric.



The semi-transparency of the fabric, especially along the legs, adds a hint of subtle sensuality. The neckline is wide and gently falls over the shoulders.

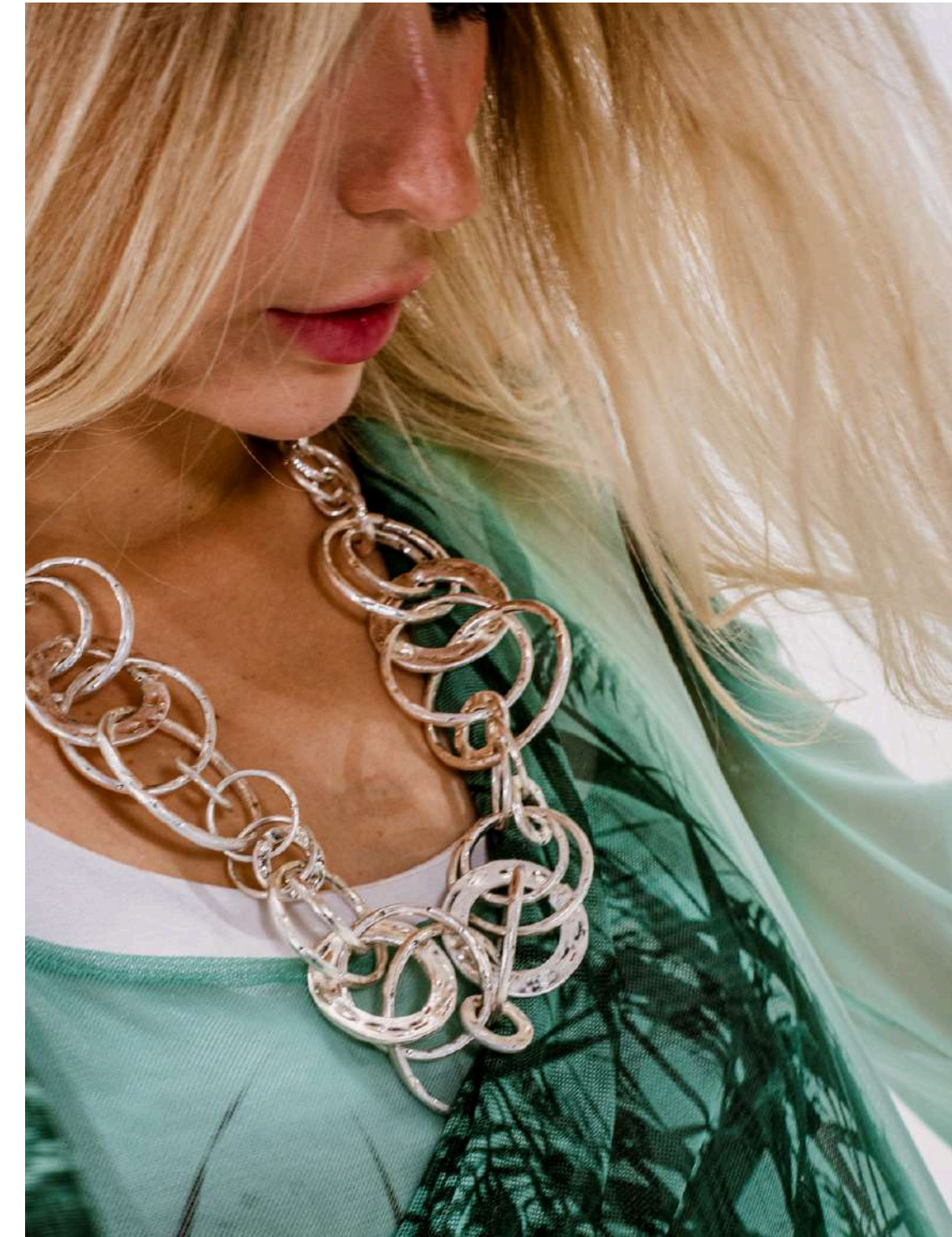




WATER - NATURE

Water's freshness flows along  
the body's sinuous lines.

This aqua-green chiffon ensemble, ethereal and flowing, captures the body's curves and follows its movements.



Paired with a sculptural necklace that reflects light like polished pebbles, the dress is the quintessence of sophisticated bohemian style.

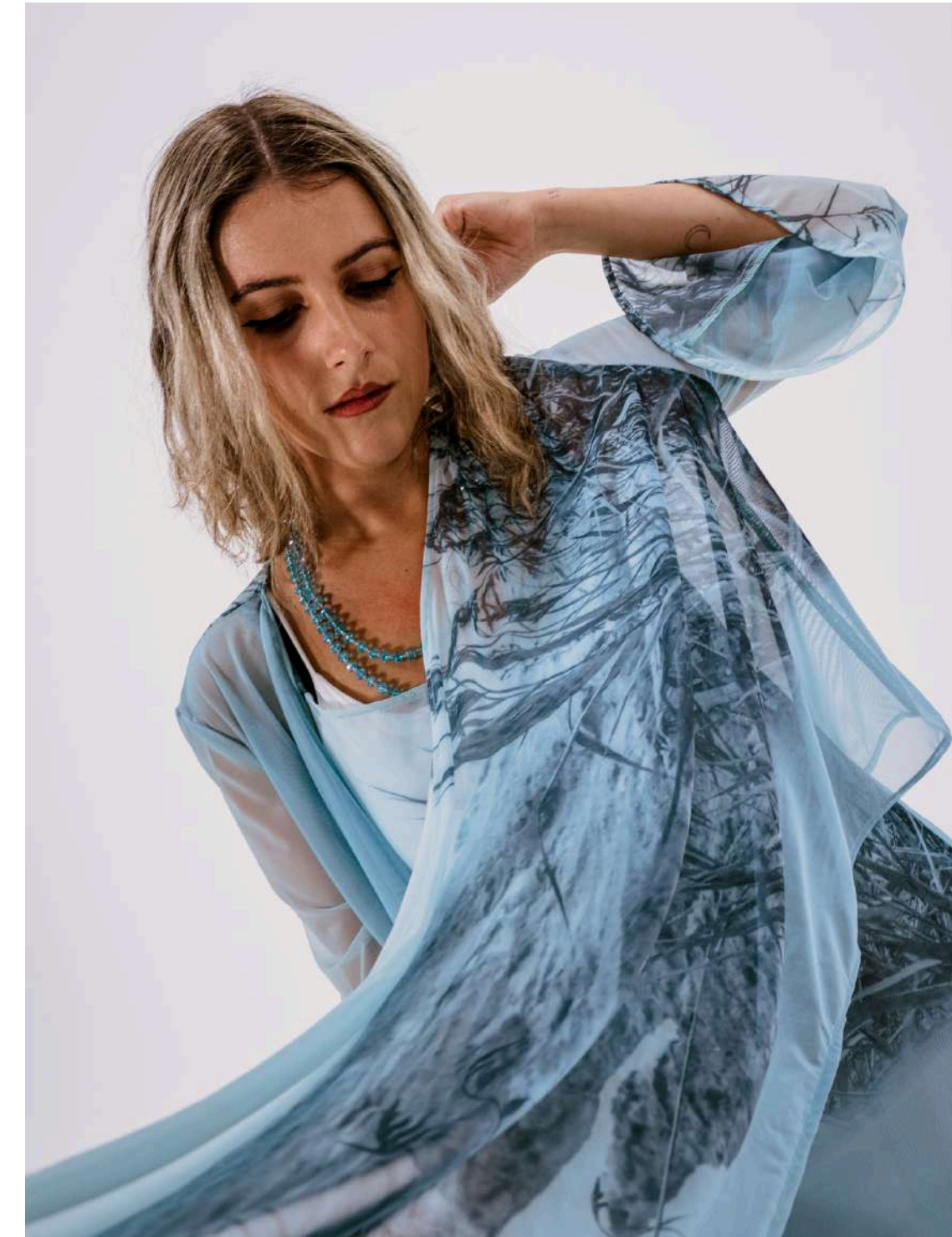




LIGHT BLUE - NATURA

The wind dances through a  
palette of liberated colors.

The two pieces share a palette of soft, cool colors, playing with layering and transparency to create gentle volumes and a romantic air.



Flowing like ocean waves, they embrace the body, highlighting its dynamic lines and vitality.

The overgarment, with long, flowing sleeves, is made from an extremely sheer fabric that gently envelops the slip dress underneath.



An asymmetrical or tiered hem is accented with a gentle ruffle, creating a fluid, almost liquid motion.

A long dress with a Bardot neckline and a flowing silhouette that gently embraces the figure, crafted in a vibrant sky blue or an intense, luminous periwinkle.

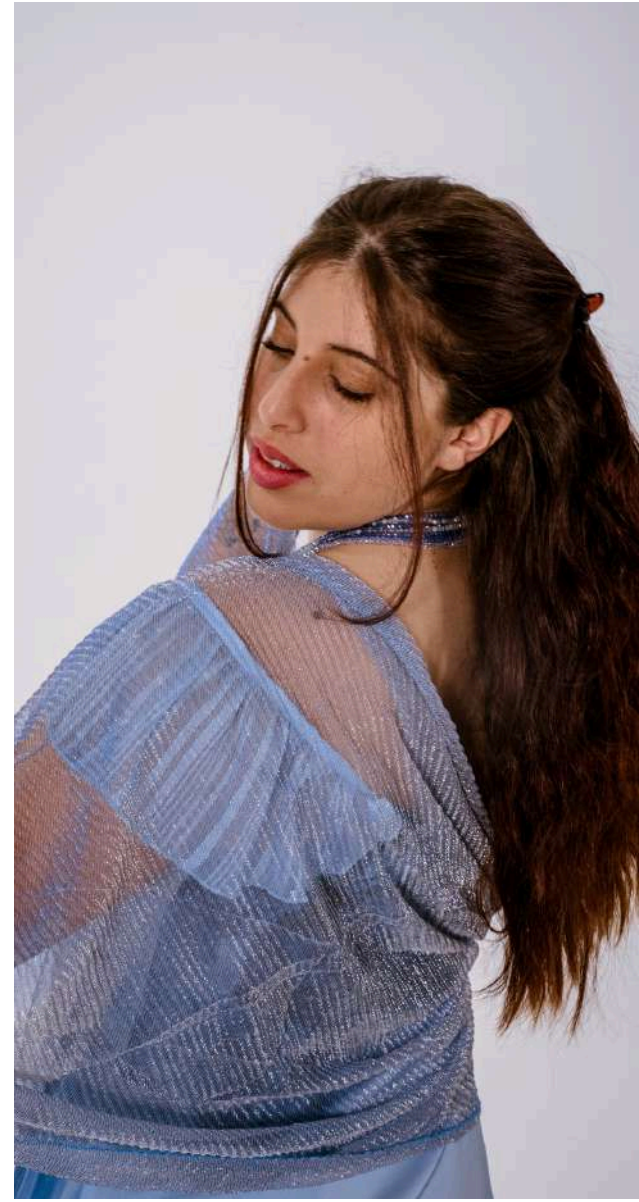


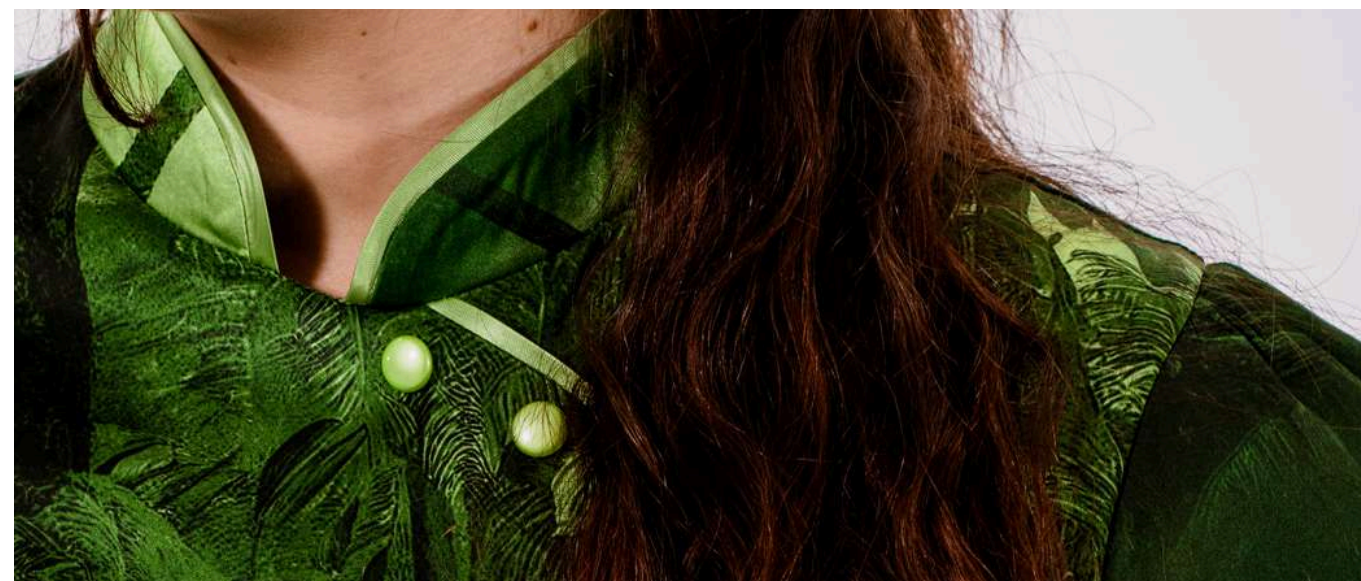
A solid-colored ruffle trims the hem, contrasting the sheer upper layer and lending a flirty, voluminous flourish to the dress's flow.













Every dress is made with dedication and passion,  
designed to move gracefully with the wearer.  
More than just color, it carries a genuine fragment of  
the world I have envisioned, turning it into an  
experience felt on the skin.



# CONTACTS

Via Traforo, 25, 10053 Bussoleno TO  
(+39) 329 836 7904  
aladinos.rosy@gmail.com  
@aladinosrosy



© All rights reserved. This booklet is intended solely for presentation purposes. Reproduction, distribution, or use of the content, in whole or in part, is prohibited without the author's permission.

