



Company Profile

Mission: Agentic AI Empowers Human

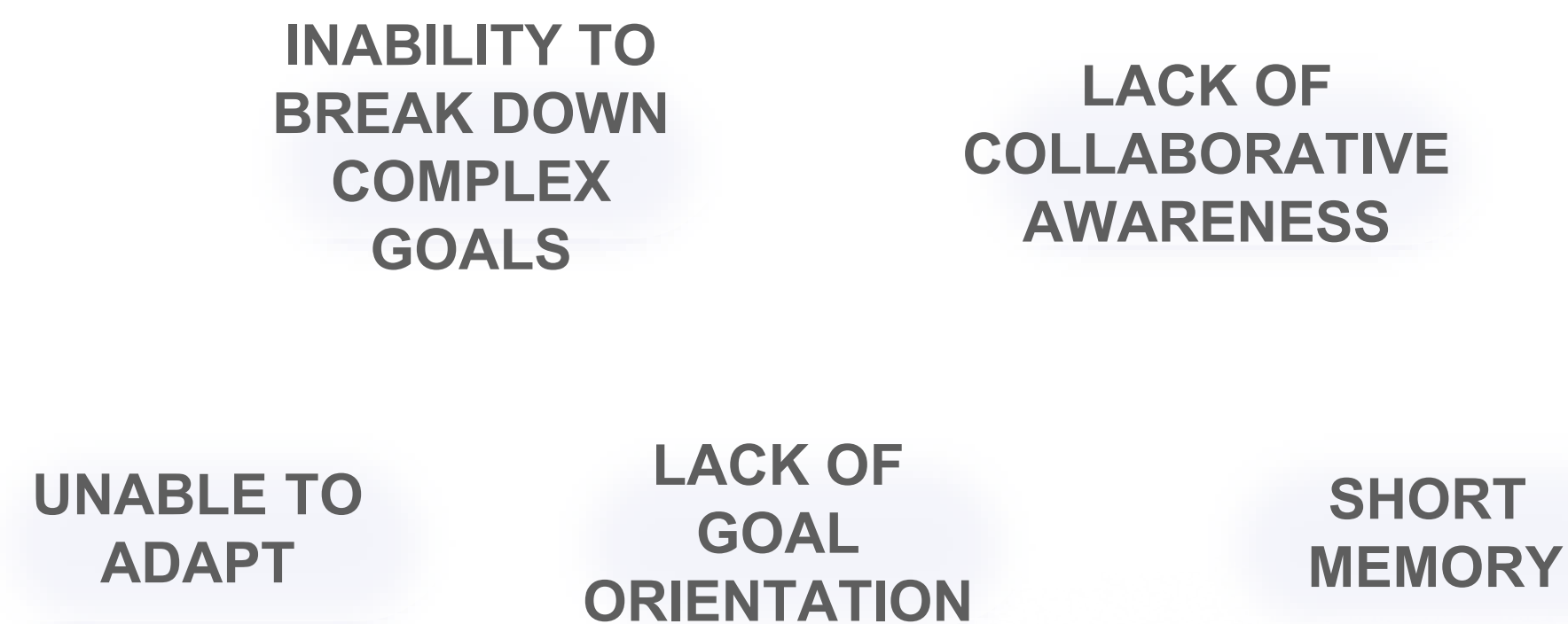
Vision: To Become a World Leading AI Agent Ecosystem Platform

- HServe is a pioneered Agentic AI platform applied across various industries and complex scenarios, including telecom, governmental services, banking & consumer finance, insurance, education, healthcare, medical, e-commerce, and functions such as customer service, compliance, training, and recruitment.
- The agents, which can be interrupted at any time, have superior interaction abilities with emotions via multi-workflow and multi-modal.
- We are aiming to become a global leader in the Gen Agent and expand human life experiences in the AI world.
- We offer a **MATRIX** of AI agents focused on serving the enterprises to handle various tasks in real-world work through thinking, deep search and reasoning.
- Agentrix is an AI assistant that focuses on serving the industries, capable of handling various tasks in real-world work through thinking, deep search, and inference, combined with multi-workflow.

Core Pain Points

◆Current status of traditional agents and LLMs

Giving out general answers and lack of sufficient service



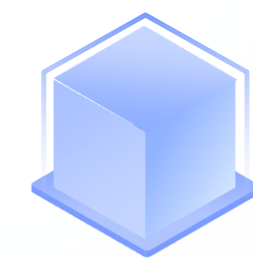
◆Single Agent tool

Serious data isolated island problem; Good at solving single-point tasks, but unable to cope with multi-business flows

◆Dify/Coze-like platforms

High development threshold and scenario limitations

Build up a Unified Agent Application Platform



INDUSTRY WORKFLOW MATRIX

Standardized operational map covering all scenarios

Pre-installed libraries for multiple industries

Modular workflow components can be freely assembled



GENERATIVE WORKFLOW ENGINE

Agentic AI generates dynamic workflows

Intent-driven generation

Logical Self-evolution

Agentrix Solution

- Compatible with multiple terminals through H5, App and SDK
- Utilize multi-modal input and output capabilities to achieve real-time and asynchronous intelligent interaction with users.
- Widely applicable to business scenarios in >300 industries.



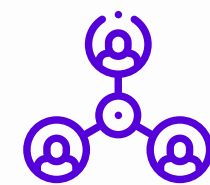
Real-time interaction module

- Through large models, instant responses to user requests are provided to provide interactive experiences



Asynchronous reasoning module

- Calling Reasoning and Functions call model
- In-depth understanding
- Business requirements
- Provide decision support



Mission Planning Module

- Automatically call or generate efficient business processes through intelligent planning system



In-depth research module

- Deep data analysis and insights
- Accurate
- Business decisions

Agentrix Prospect

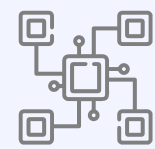
- Open ecosystem construction
- Industry preset templates
- Mixed interaction mode
- Vertical scenario breakthroughs
- Private deployment solutions
- Developer ecosystem
- Industry knowledge engine
- Hybrid reasoning architecture
- Cost optimization solution

Tech Advantages

The core architecture of Agentrix includes the user interaction layer, the main dialogue model, the reasoning and function call model, and the task planning and deep analysis module. The main dialogue model implements real-time response, and the reasoning and function call model supports complex business logic processing and asynchronous task execution.



Multimodal data understanding and processing



Real-time and asynchronous dual modes to flexibly respond to business needs



Powerful function calling and reasoning capabilities, supporting complex business logic



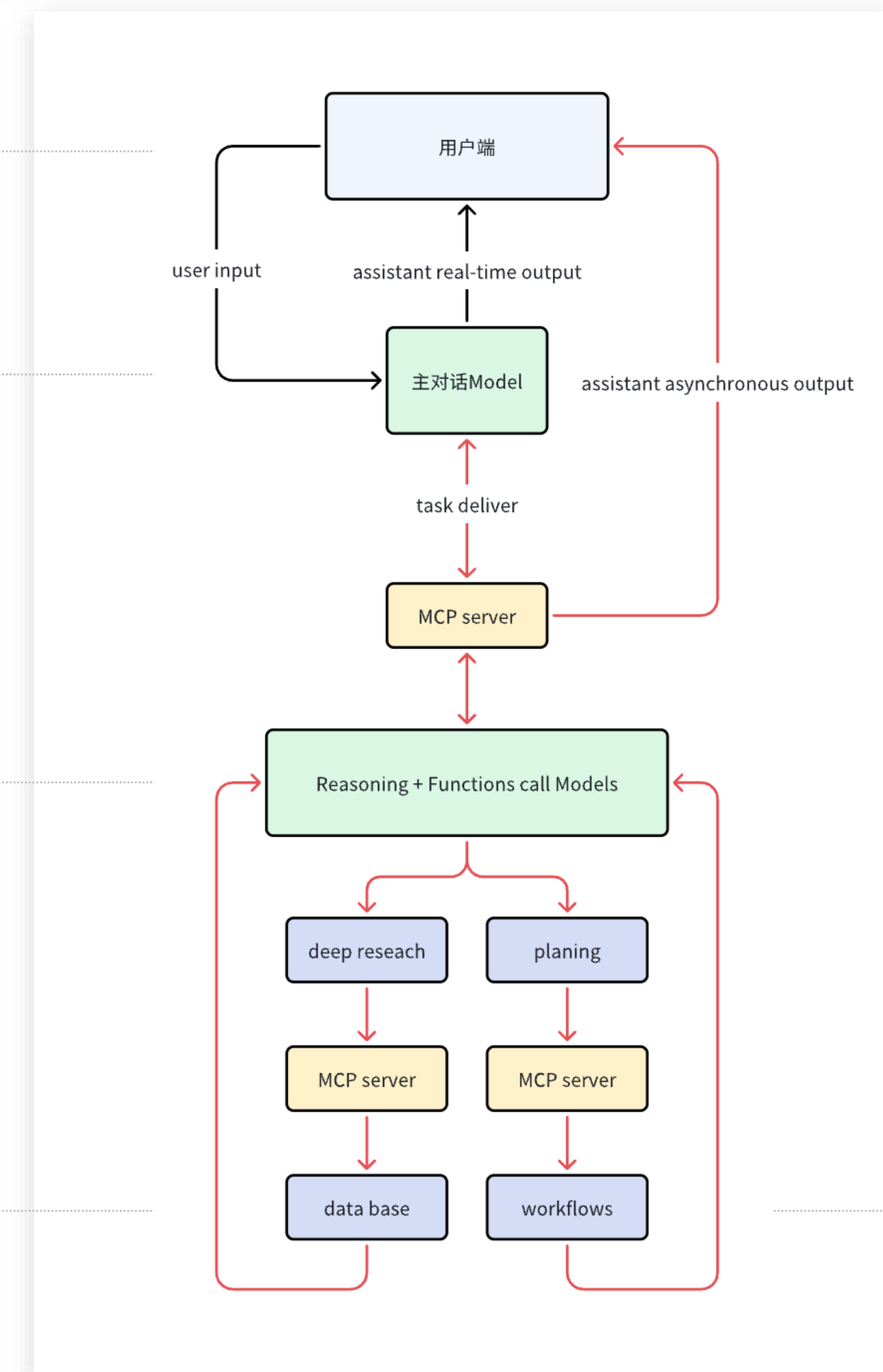
Efficient real-time database access and process automation

Multimodal
input/output
H5/app/sdk

Voice/text/video
Large model

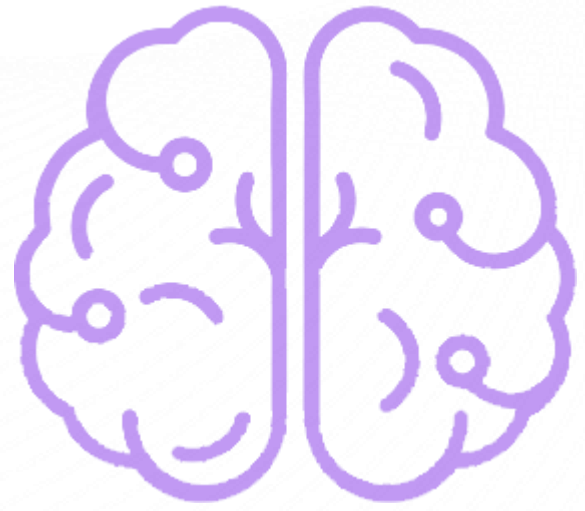
Inference/Function
Call Large Model

Real-time access to
various types of
databases



300+ industry
workflows

Why HServe?



**Super humanized Agents
with emotions**

**From interaction to
execution on an integrated
platform**

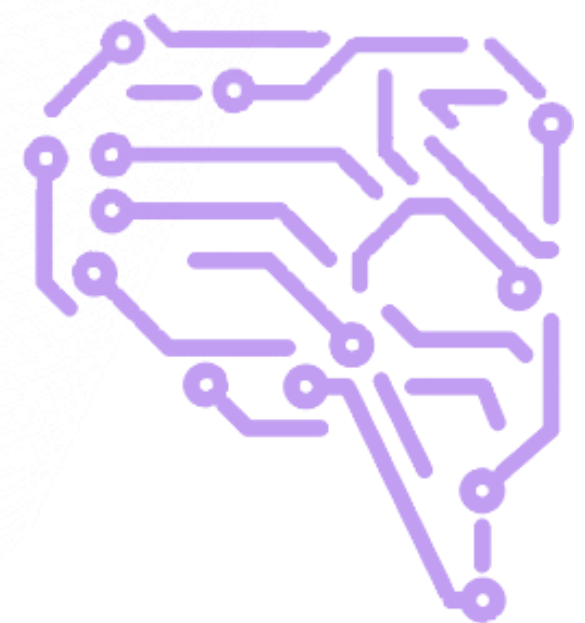
**Complicated tasks
executed via AI Agents**

**Recognized by China Mobile
& 100+ banks & hospitals**

**Flexible, secure, scalable
structure**

**Surpassed iFlytek &
ByteDance**

**Top tech team &
since 2021**



Diagnosis & Decision Support System for the Medical Industry

Smart Contract Quality Inspection

Implement text parsing, seal
recognition & compliance
verification for massive documents



Electronic medical record integrity verification

Automatically checks the
medical record and triggers a
reminder



Commercial Banks Scenarios

Anthrova

Analyzing

A

📄

📁

📧

Help me reconcile the transaction flow of Stellar Tech Group Ltd

Understood. Please wait...

Processing request for batch reconciliation of multiple bank accounts: 🤖

1

Calling MCP API to retrieve transaction data for target enterprise and sub-accounts

2

Standardizing fields: transaction date, amount, account, description, balance

3

Detecting anomalies: high-frequency transfers, similar amounts, balance jumps

4

Performing aggregation and grouping of transactions

5

Generating standardized bank reconciliation analysis report

Type your message here...

🔗

🎤

➤

Workspace

AI Gen

Bank Reconciliation Batch Processing Report

Multi-Account Transaction Processing System - BatchProcessor v3.0

Report ID: BSP-2024-1206-004 Status: **Completed** Data Quality: 98%

✔ **Batch processing complete:** Successfully processed 15 bank accounts for Stellar Tech Group, covering 52,847 transactions from Nov 1-30 with total processed amount of \$3.86B. System completed data cleansing, anomaly detection, reconciliation, and trend analysis.

📊 Account Summary Analysis

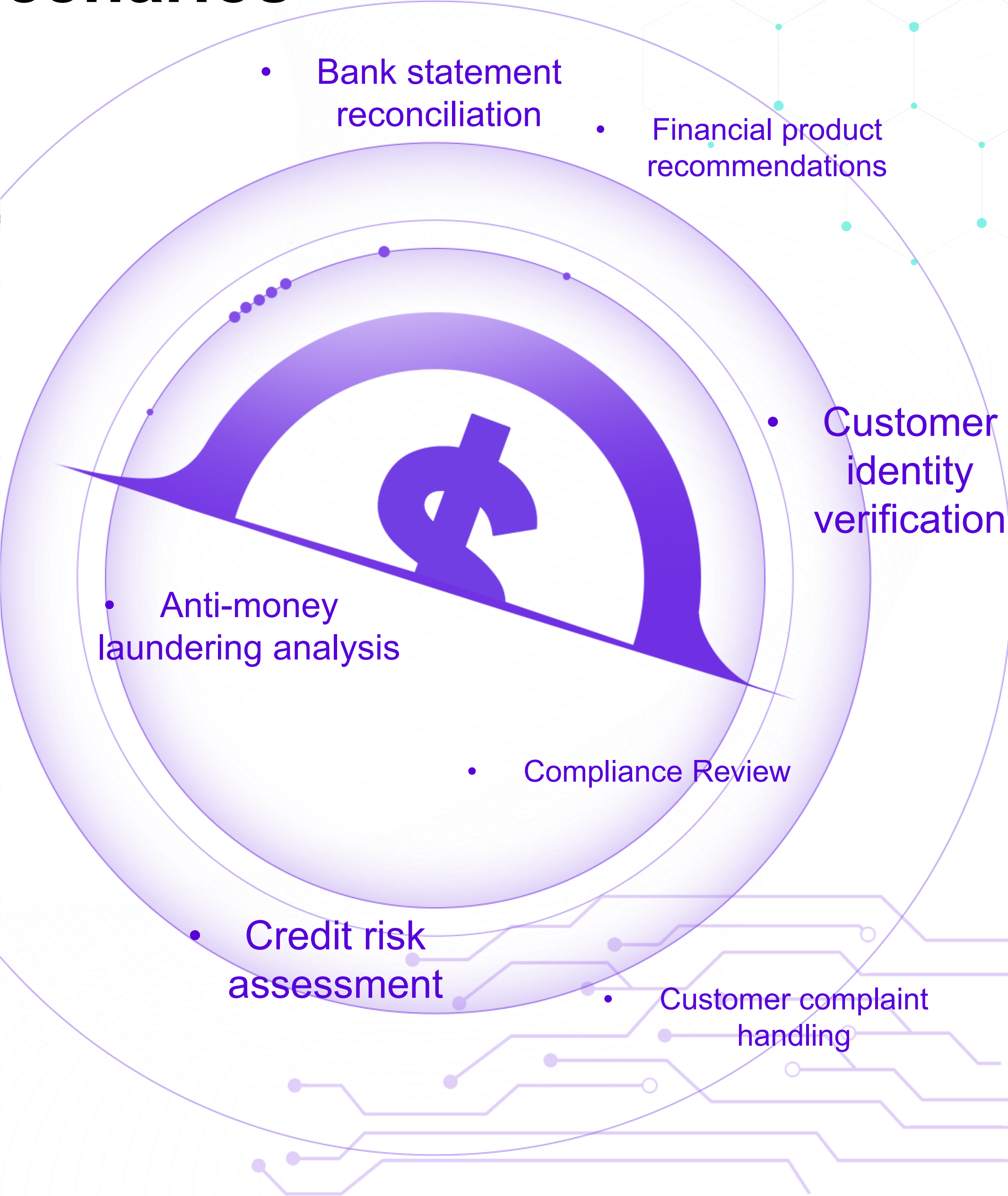
🏢 Corporate Bank Account Statistics

ENTERPRISE NAME

Stellar Tech Group Ltd.

ACCOUNTS PROCESSED

15 accounts (across 7 banks)



Growth Blueprint

2025-2026
Foundation

Benchmark customer strategy × solution verification

→ Developer Ecosystem Prototype

→ Scheme standardization

•Key client scenarios

- ✓ Sign with 3-5 pilot clients
- ✓ Prepare 40-50 industry-level intelligent solutions
- ✓ Establish 5-10 R&D agentic AI teams partners

2027-
2028
Expansion

Platform transformation × ecological network effect

→ Business value closed loop

→ Open collaboration capabilities

•Platform architecture upgrade

- ✓ Large-scale access to 30-50 leading enterprise customers
- ✓ Agent resource pool expanded to 500+ callable units
- ✓ Developer ecosystem 100+ groups of R&D collaborators/partners
- ✓ Realize Agentic workflow orchestration system

2029
Reign

Customized SaaS transformation × ecosystem

→ Developer economy explodes

→ Demand long tail coverage

•Market share #1 in the industry

- ✓ Build up the world's largest intelligent agent trading market with 2000+ standardized agents
- ✓ 1000+ R&D team partners collaborators/partners
- ✓ "App Store effect" of the intelligent agent ecosystem (market share > 85%)

100+ Large Corp. Clients & 650M+ end-users

Commercial Banks



Telecom



Medical & Others



Strategic Partners



The core technical and business development team comes from PEKING UNIVERSITY, STANFORD UNIVERSITY and leading technological companies

Mr. Mark Cai Founder

- PhD from Guanghua School of Management, Peking University, Fulbright Scholarship recipient;
- Serial entrepreneur in e-commerce and data mining industry;
- Building multiple startup organizations based on artificial intelligence, blockchain and other technologies from 0 to 1;
- Completed series B+ round over 100 million RMB;

Mr. Lawrence Wong CEO & Co-Founder

- Experienced in financial control and fundraising AUM of USD 1.5 billion in Greater China & Singapore, covering food productions, estate, and media industries. at Goldman Sachs Securities, Vantone Real Estate and DMG Entertainment.
- MBA International Business & Finance, Oklahoma City University Bachelor's of Financial Service, San Diego State University

Mr. WANG Zhe Graph Algorithm Scientist

- Master of CS/SE from Peking University,
- Graphics R&D Engineer;
- Microsoft Research Asia, Digital Assistant & Personal AI Assistant Project R&D in the Innovation Engineering Group;
- Technical Art of Perfect World Sandbox Project, responsible for art workflow construction, art tool development, and environmental special effects research;

Mr. CHEN Xi Vice President, Customer Success

- Responsible for HServe sales operations and management;
- Former Regional Director of South America, Middle East and Russia for Huawei, Shandong Heavy Industry and Zoomlion;
- 14 years of global 2B/large corporation sales experience;
- 8 years of telecom industry sales experience;

Mr. GUO Lin CTO & Co-Founder

- VR/AR technology lecturer and master tutor at Peking University;
- Microsoft MRPP (MR technology partner);
- 12 years of continuous entrepreneurship in the VR/AR industry/entrepreneurship tutor;
- Nominated for the British Academy Awards (BAVGA);

Mr. PEI Xiaoxing Chief Architect

- Graduated from Wuhan University;
- Co-founded & CTO of Doujiao.com with Li Yanan
- A serial entrepreneur in the gaming industry. Founded a mobile game company and served as CEO and CTO;
- Developed the first H5-ACG mobile game in China; a fighting mobile game with millions users and RMB >50 millions revenues;

Mr. ZHANG Bingwei Chief Scientist

- Master of CS/SE from Peking University, PhD of CAD&CG from Zhejiang University;
- Researcher of the State Key Laboratory of Computer-Aided Design and Graphics;
- Serial entrepreneur in VR and gaming industry;
- Responsible for the company's R&D on graphics and image algorithms.

Mr. DONG Xiaoyang Graphics Engine Expert

- Master Degree of Stanford University, USA
- Former Professor at Peking University, specializing in computer vision and graphics
- Founder and CTO of Guyou Technology, China.com, and Shikexing Network
- Student of Turing Award winners PATRICK HANRAHAN, JEFF ULLMAN



<http://www.HServe.ai>