



Empowering territories experts with
People Flow Analytics Solutions

Citiprofile – a Deeptech solution to measure human activities

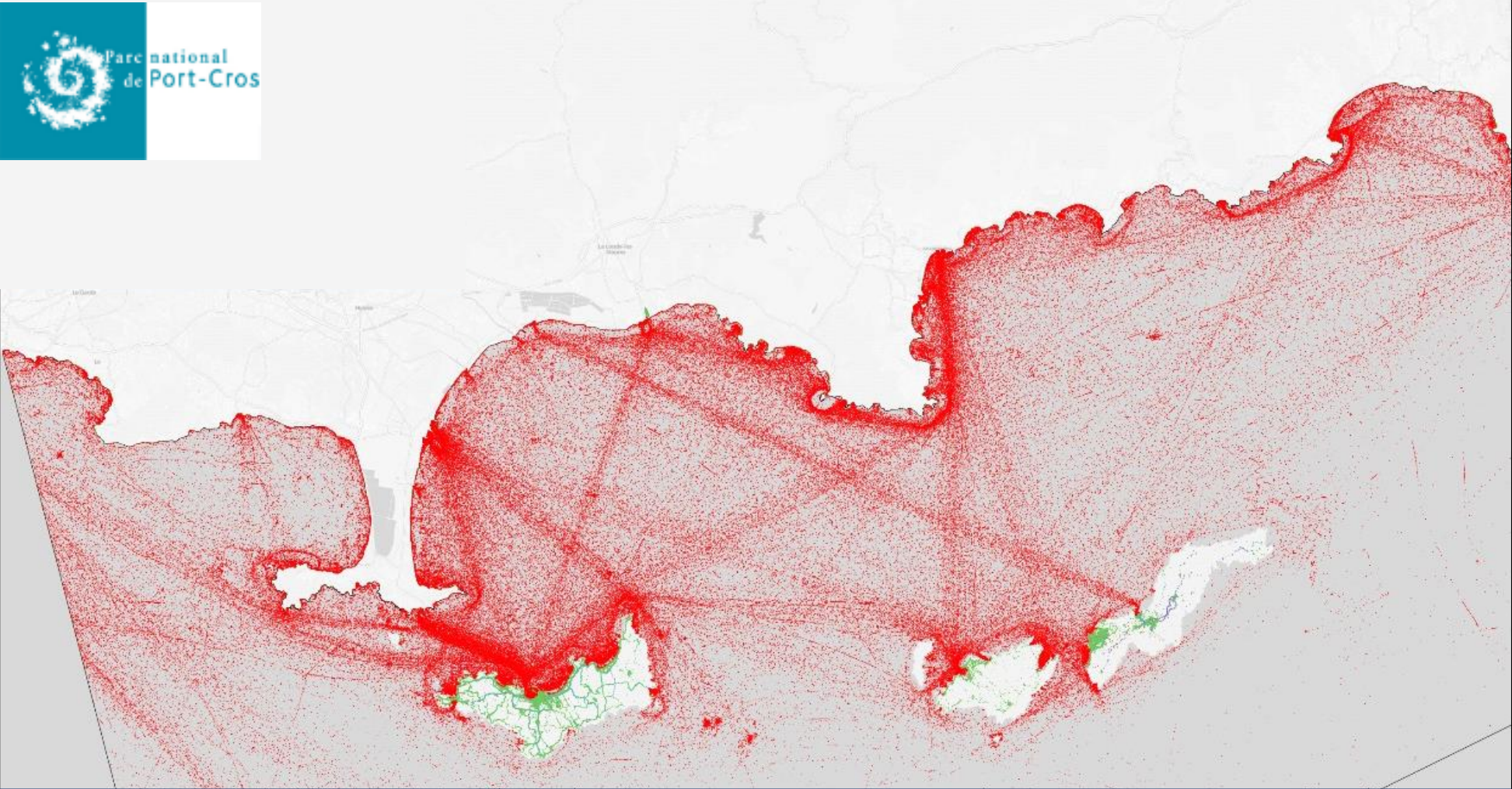


References

Area Managers



Specialized Companies



- By boat
- By car
- By foot



1. Micro Services

Behavior Analytics

Geographical origins

Revenues

Days and times of attendance

Duration of visits

Frequency



Modes of transport

Roads or absence

Elevation gain

Speed

Path intensity

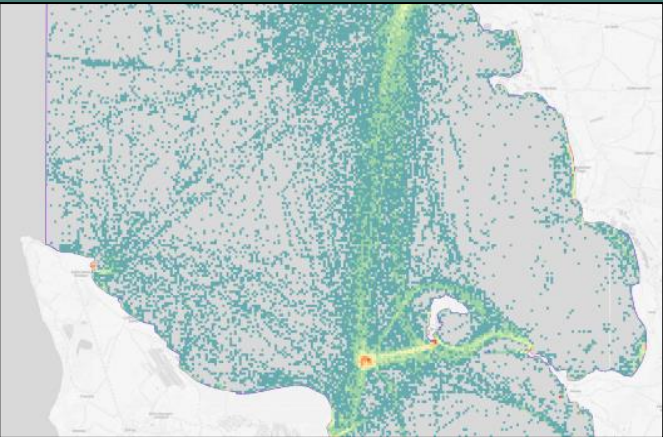
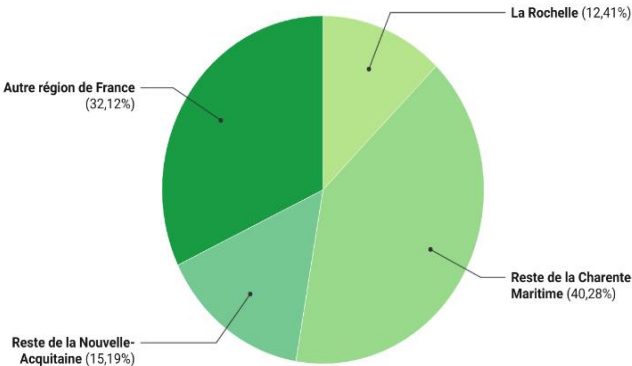
....

2. Diagnostics

Analytical Dashboards

Territoires d'origine des visiteurs français du site analysé

Les zones d'origines sont exclusives et le total est égal à 100 %



3. Operations

Operational Analytics

Flows management

Entrances Analysis

Internal Pathways

IoT Sensors Audit

IoT Sensors Localization

HR Localization

Usage conflicts

Impact studies



Permanent Population Baku 2023 [399586]	
✓	0 - 0 [57306]
✓	0 - 7 [333688]
✓	7 - 27 [2621]
✓	27 - 53 [2555]
✓	53 - 83 [1297]
✓	83 - 125 [920]
✓	125 - 203 [669]
✓	203 - 385 [396]
✓	385 - 2286 [134]

The comparative analysis of the **399,586** buildings in the city of Baku makes it possible to model the distribution of the permanent population on the territory, taking into account local official statistics, the floor space of the buildings, their typology, the height of the buildings, the presence of points of interest on the ground floor, etc.

Citiprofile was able to model the presence of **950,000 residential households** in the city of Baku.

This data makes it possible to meet the planning needs of urban planners, specialists in mobility and transport, commerce, security, etc.

Citiprofile – Use case, Urban tourism flows analytics, Nice, France

Micro Services Citiprofile

Behavior Analytics

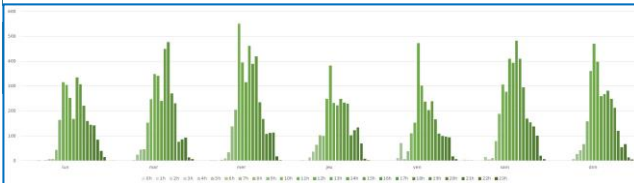
Geographical origins

Revenues

Days and times of attendance

Duration of visits

Frequency



Modes of transport

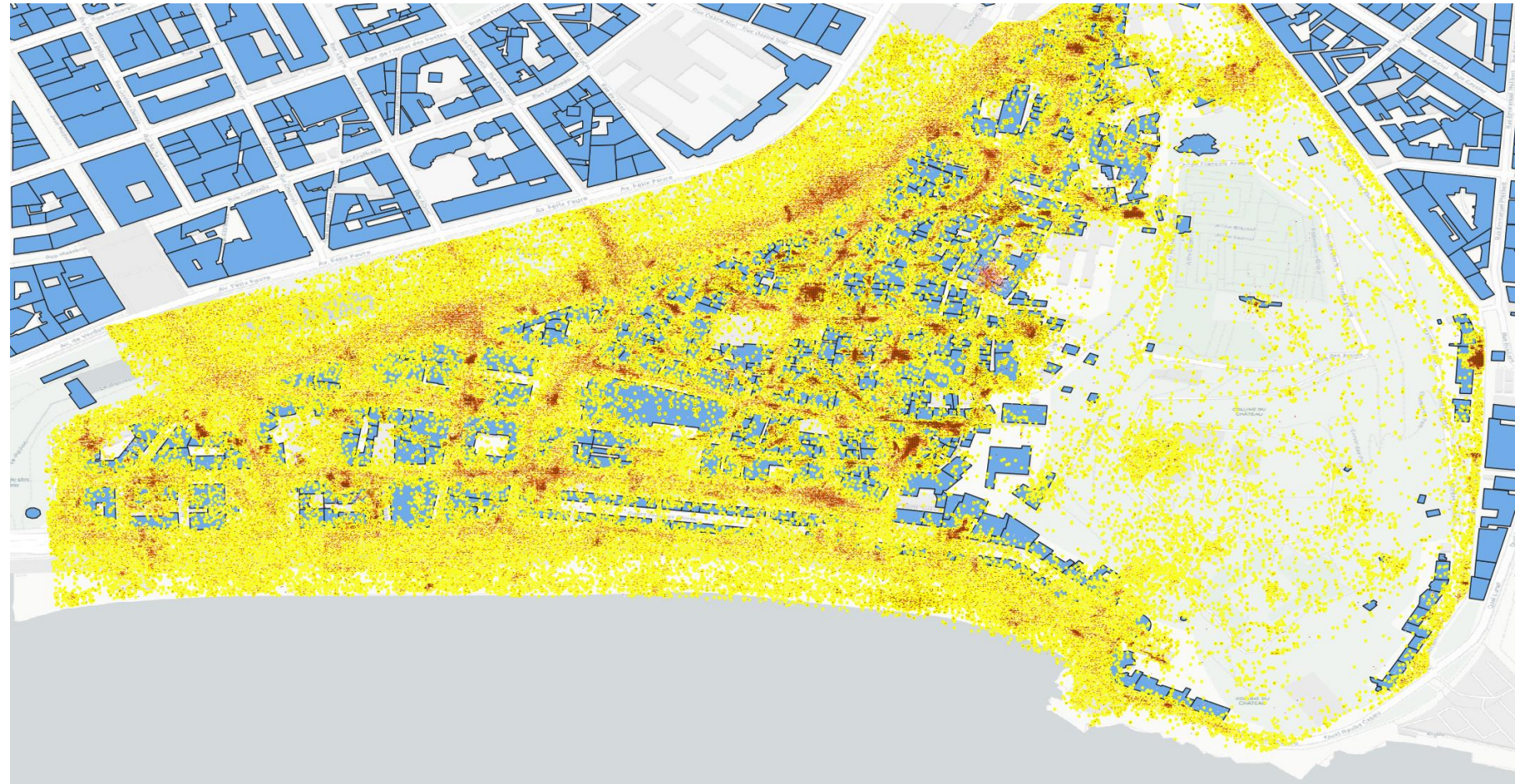
Roads or absence

Elevation gain

Speed

Path intensity

...



Citiprofile allowed the Nice city authorities to analyze the following without deploying any equipment:

- distribution of human activities within a specific area (Old Town / Vieux Nice)
- Distribution of human activities by transportation mode (by foot, alternative modes, motor vehicles)
- distribution of human activities by geographical origin (locals and tourists) and temporality (hours / days / months)

Citiprofile solutions have also made it possible to determine to meet the requirements of sustainable tourism:

- the optimal location of physical traffic sensors(video, IoT)
- the optimal location of visitor restriction areas according to visitor flows specifics
- the optimal spatial and temporal location of the civil security resources according to visitor flows

Micro Services Citiprofile

Behavior Analytics

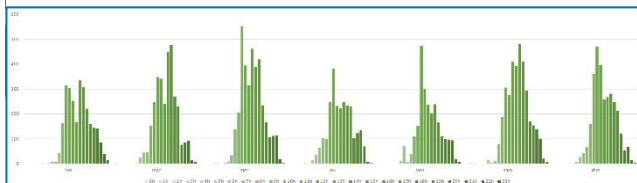
Geographical origins

Revenues

Days and times of attendance

Duration of visits

Frequency



Modes of transport

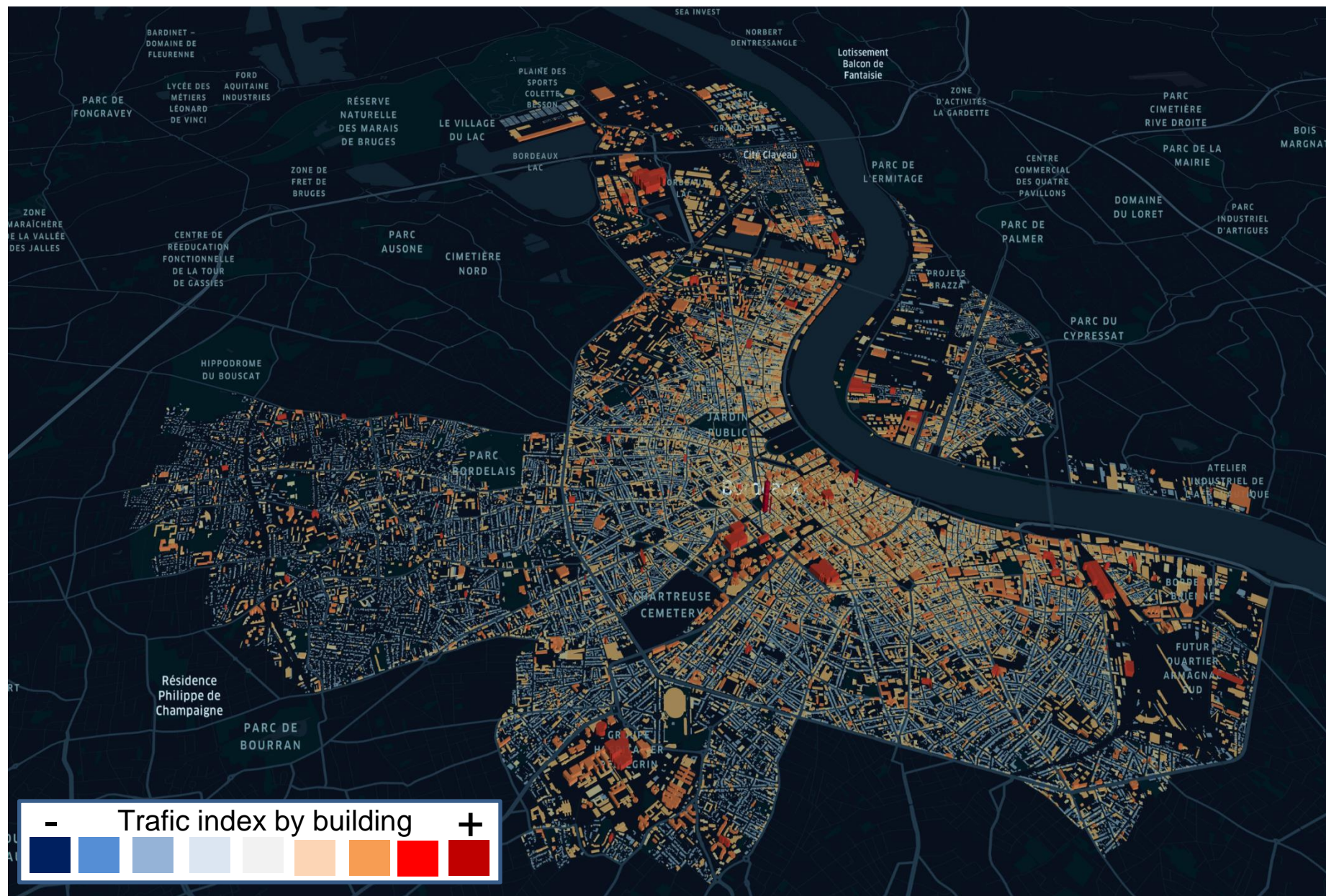
Roads or absence

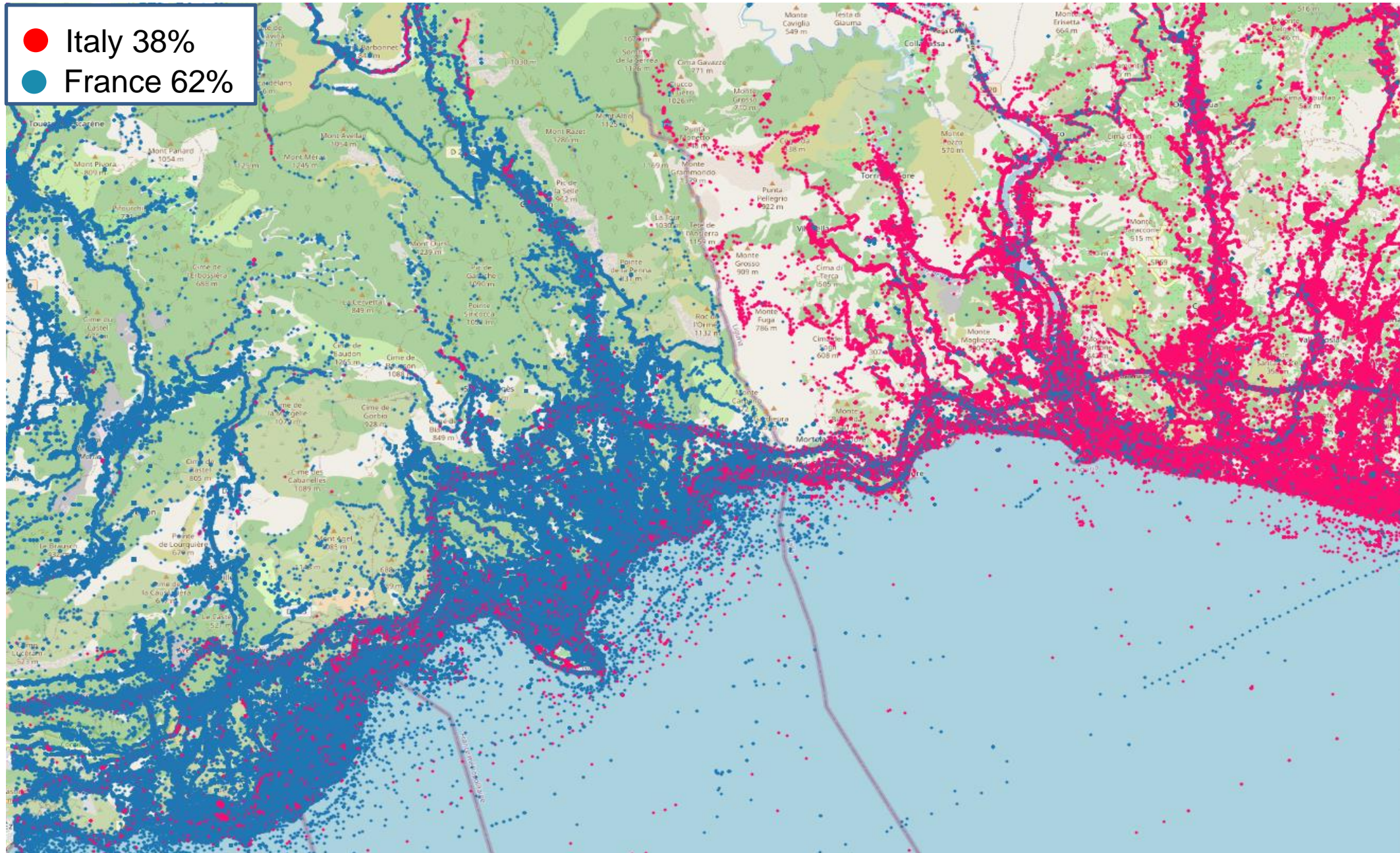
Elevation gain

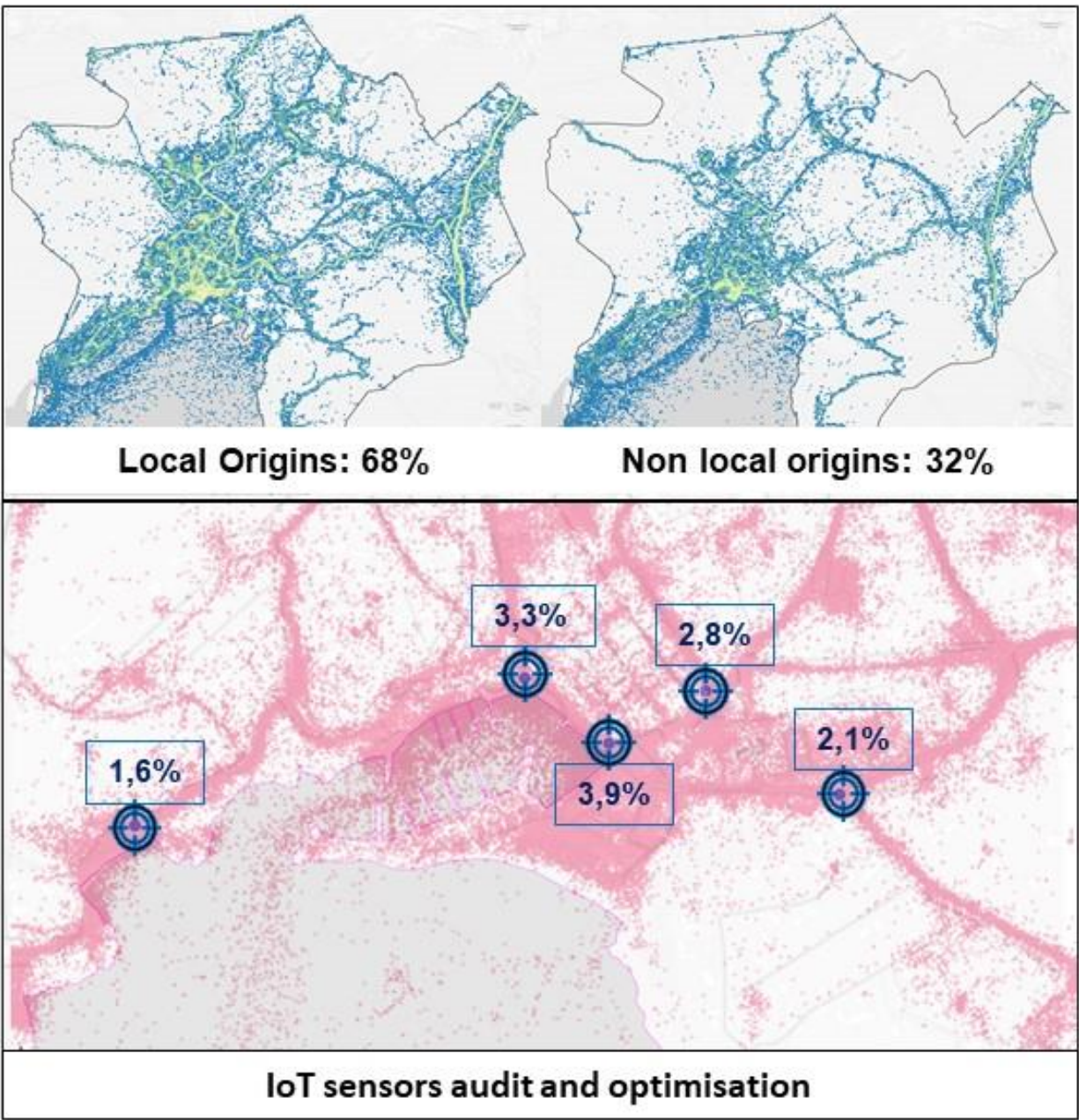
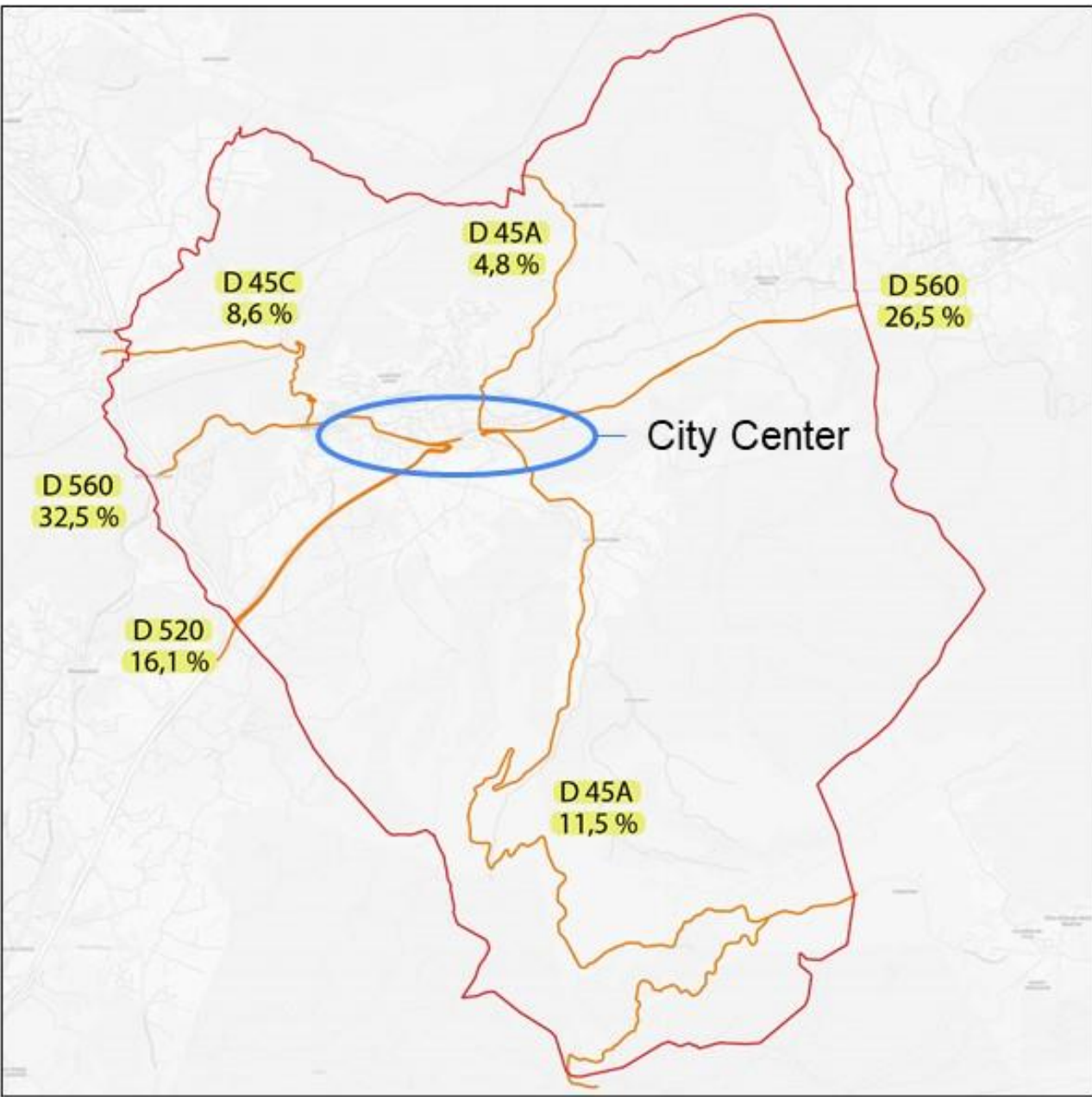
Speed

Path intensity

...

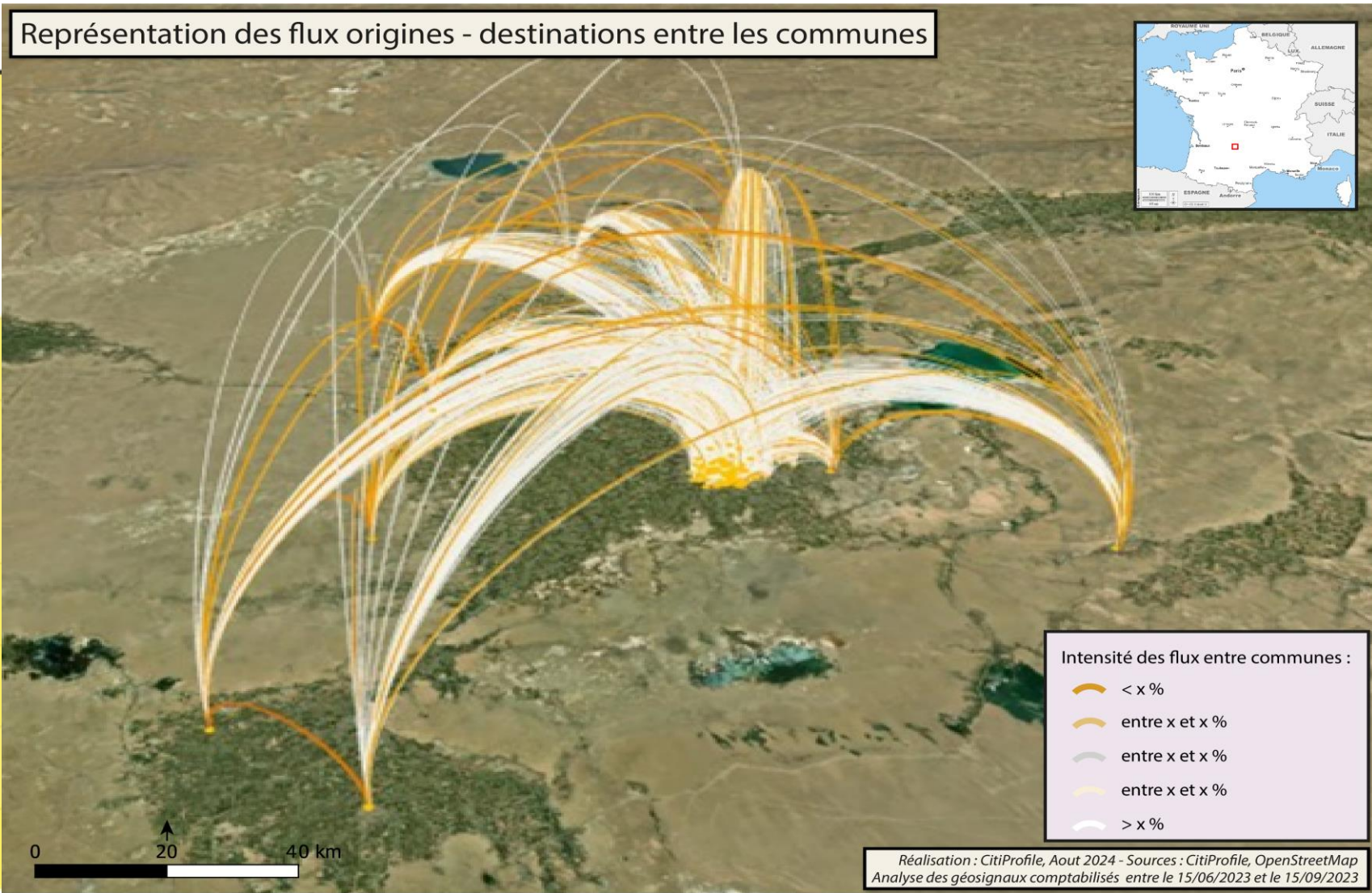






Origins / Destinations Matrix between administrative areas (% of traffic)

origine/destination	Com. A	Com. B	Com. C
Commune A	57%	8%	2%
Commune B	16%	67%	6%
Commune C	1%	4%	74%
Commune D	2%	1%	4%
Commune E	1%	8%	2%
Commune F	1%	5%	5%
Commune G	6%	3%	1%
Commune H	6%	2%	1%
Commune I	6%	1%	4%
Commune J	4%	1%	1%



Partners, Incubators and Funders



As seen in the media



Empowering territories experts with **People Flow Analytics Solutions**



Tel: +33 4 89 30 29 06



atrousset@citiprofile.com



www.citiprofile.com