



**DCM**®  
**MOULD**

Flawless Moulds for Perfect Products

# ABOUT US



2



**Our Vision:**  
Becoming a preferred solution partner to High Pressure Die Casting (HPDC) industry.

# ABOUT US



DCM  
MOULD

3



## Our Focus: Advanced High Pressure Die Casting (HPDC) Tooling Solutions

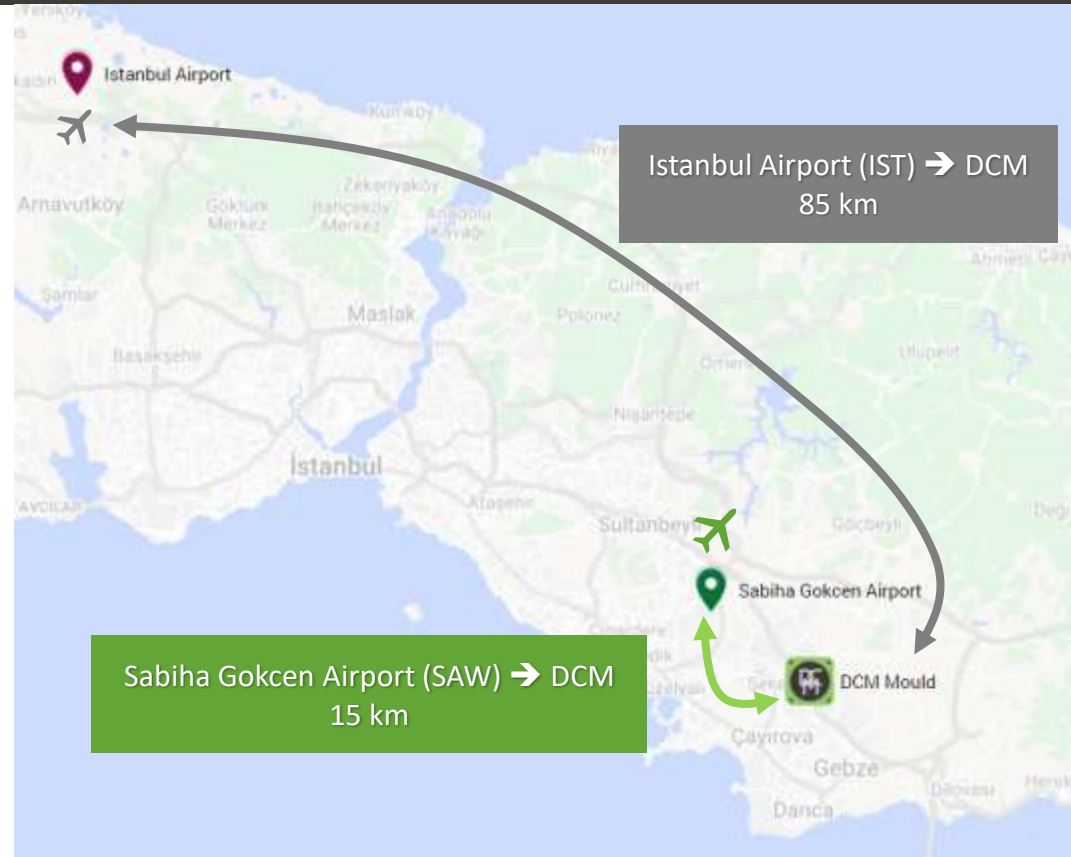
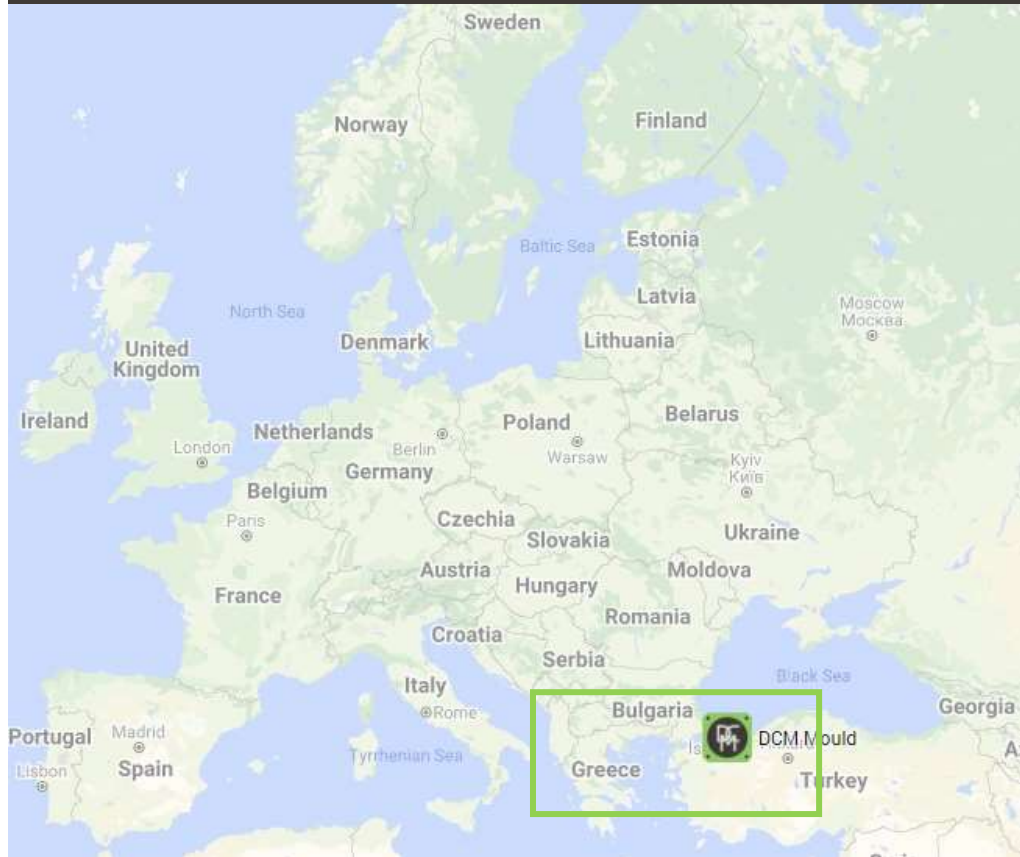
- **HPDC Moulds (weight max. 40 tons)  
Lightweighting**  
i.e. Structural Parts, Shock Towers
- Electrification & e-mobility**  
i.e. Battery Cases, Housings
- ICE Vehicles**  
i.e. Oil Pans & Transmission Housings
- **Prototyping**  
HPDC Moulds for prototype parts  
Machining from Aluminium Blocks
- **Trimming Tools (up to 4400T)**
- **Machining Fixtures**  
Hydraulic Clamping Fixtures  
Pneumatic Clamping Fixtures

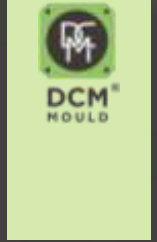
# LOCATION



DCM  
MOULD

4





# FACTS & FIGURES

# FACTS & FIGURES



10.000 m<sup>2</sup> (Covered 5.500 m<sup>2</sup>)



Turnover: 6M€



100% Privately Owned



Design & Simulation  
Project Management  
Certified Materials and Production



54 People (Oct 2025)

- 18 white collar (10 Engineers)
- 36 blue collar
- 30+ years HPDC experience



HPDC Moulds up to 3500T  
Trimming Tools up to 4400T+  
Machining Fixtures 3, 4 and 5-axis



Annual Capacity:

- 60+ Die Casting Mould
- 30+ Trimming Tool
- Machining fixtures
- Control Gauges



HPDC-Mould-weight up to 40T



DCM  
HOULD

# DESIGN & SIMULATION & PROJECT MANAGEMENT

# DESIGN & SIMULATION



DCM  
MOULD

8

## Design Programs

  
**SIEMENS NX**

 **SOLIDWORKS**

 **CATIA**

## Simulation

 **MAGMA**

## Fast Analysis

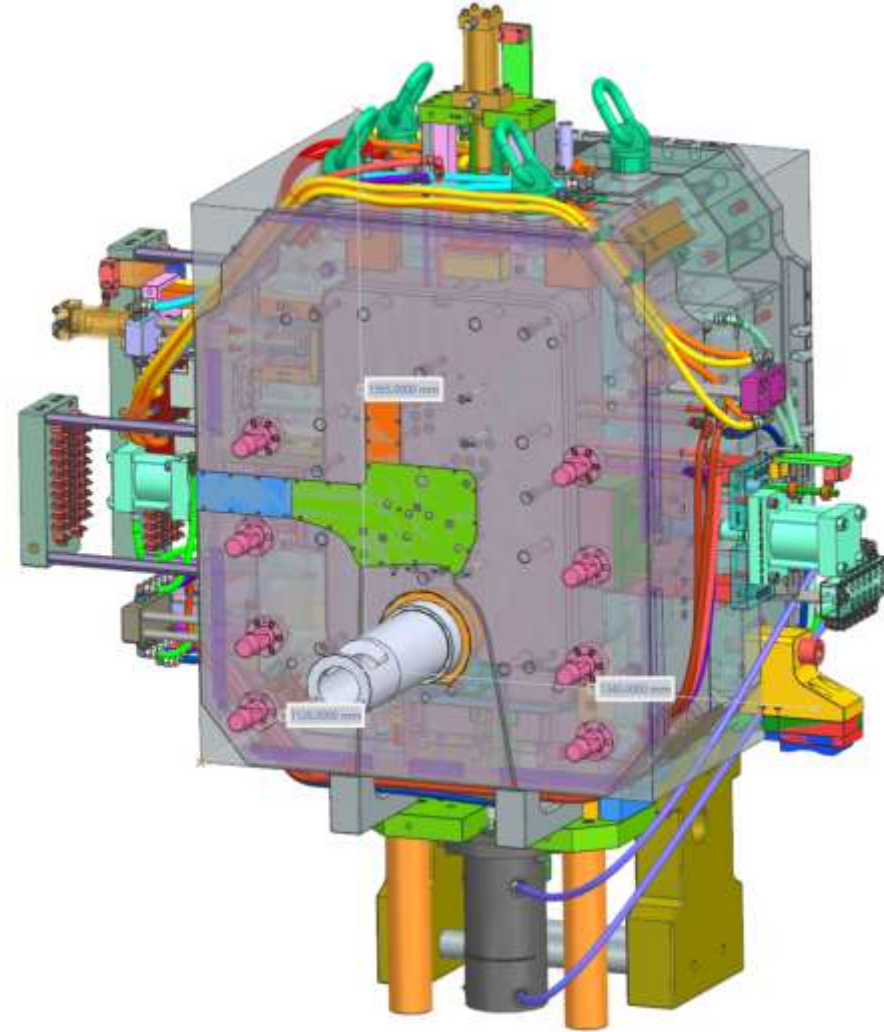


### Design & Simulation Team:

- 3x HPDC Mould
- 1x Trimming Tool
- 1x Machining Fixture
- 1x Simulation

## Technological Moulding Solutions

- 3-Plate Moulds (Dies)
- 3D Printed Inserts
- Additive Manufactured Inserts
- Submarine Sliders
- W-Alloyed Inserts
- Squeeze Pins
- Jet Coolings
- Conformal Cooling Applications
- Quick Die Clampings



# DESIGN & SIMULATION

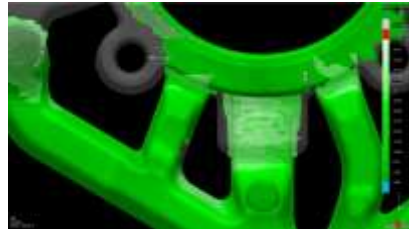


DCM  
MOULD

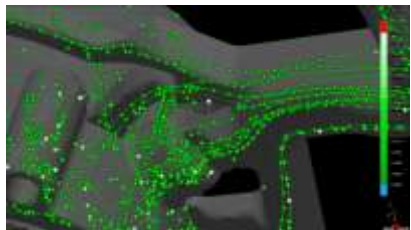
10



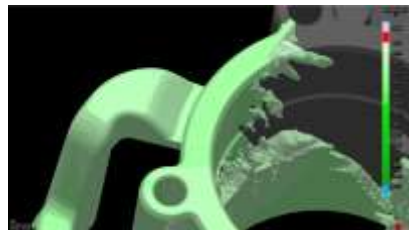
Air Pressure



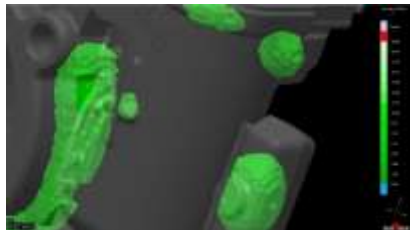
Velocity



Tracer



Temperature



Hot Spot



Porosity

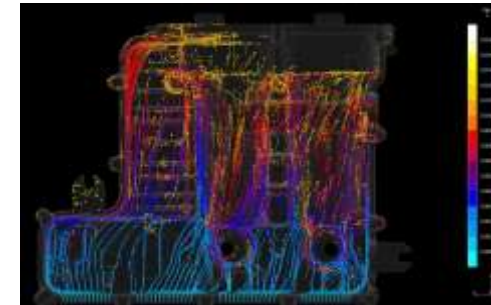
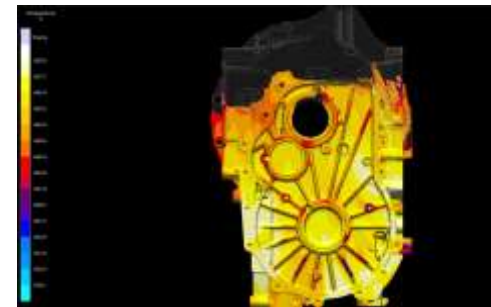
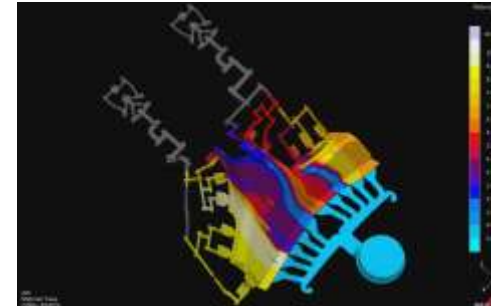


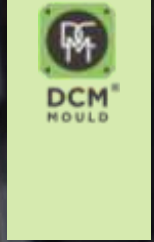
- Casting Process Optimization

- Runners
- Gatings
- Cooling System
- Air Venting
- Vacuum System
- Casting Parameters

- Co-Design Studies

- Weight Reduction
- Thickness Reduction





# MOULD PRODUCTION LINES

# CNC MILLING LINE



12



2022 March

# CNC MILLING LINE



DCM  
MOULD

13



2025 February

# CNC MILLING LINE



DCM<sup>®</sup>  
MOULD

14



# CNC MILLING LINE



DCM  
MOULD

15



# CNC MILLING LINE



# EDM & WEDM LINE



DCM  
MOULD

17



# CNC TURNING LINE



DCM<sup>®</sup>  
MOULD

18



# CAM PROGRAMMING



DCM<sup>®</sup>  
MOULD

19



**hyperMILL<sup>®</sup>** 5 Licence

**ESPRIT<sup>®</sup>** 3 Licence  
CAD/CAM SOFTWARE

PLM Software  
**SIEMENS**  
**NX** 3 Licence

visualcam  
**fikus** 1 Licence

DCM  
MOULD

20

# MACHINE PARK

TYPE	BRAND	MODEL	REV (rpm)	Machining Capacity (mm)	Workpiece Weight (kg)
CNC LATHE	MICROCUT	HTL76	3.000	10" (1250mm)	200
	EMCO	S45	6.300	6" ( 310 mm)	100
DEEP DRILLING	SAMAG*	TZF 2	8.000	Ø3...Ø36/Lmax 1250	10.000
EDM	SODICK	AG60L		600 x 420 x 370	1.500
	ONA	ONA QX6 PLUS		1000 x 750 x 650	4.000
	OSCARMAX	S1060NC		1670 x 990 x 500	4.500
WEDM	SODICK	AG1200LH		1200 x 800 x 600	4.000
	FANUC	ALPHA C800IB		800 x 600 x 510	3.000
	ONA	ONA AV80		1000 x 800 x 600	5.000
Micro Drill EDM	OSCARMAX	SD755ZNC	-	1630 x 690	2.600
	OSCARMAX	SD600ZNC	-	1135 x 540	1.000
CNC MACHINING CENTER	MAZAK*	VARIAXIS I-700	18.000	630 x 1100 x 600	700
	MAZAK	FJV 60/80	10.000	2000 x 1400 x 660	4.000
	MAZAK	FJV 35/60	18.000	1500 x 800 x 660	2.500
	DMG*	DMU65	24.000	Ø650	650
	DMG	DMU85	20.000	850 x 850 x 650	1.500
	DMG	DMU65	24.000	Ø650	1.000
	TRIMILL*	VF1614	14.000	1600 x 1400 x 800	2.500
	YCM	NDC 3022B	10.000	3200X2200X762	12.000
	YCM	NXV 1680B	6.000	1630X860X762	2.000
	YCM	NSV 106A	12.000	1020X600X600	700
ELECTRODE MACHINING	AXILE	V5	25.000	800 x 500 x 500	600
DIE SPOTTING PRESSES	MILLUTENSIL	MIL.203		2000 x 1500	150T Clamping Force
	HÜRSAN	KAP 77/900		3500 x 2500	300T Clamping Force
MEASUREMENT DEVICES	HEXAGON	GLOBAL S		1200 x 2200 x 1000	2.250
	HEXAGON	GLOBAL LITE		700 x 700 x 500	900
	ZEISS	T-Scan Hawk 2	On-Machine-Scan	No dimensional limitation	No limitation
GRINDING	PROTH	PSGO-75150AHR and PSGS4080AHR			
UNIVERSAL MILLING	LAGUNA	ST-4M - 2x machines			
UNIVERSAL LATHE	TEZSAN	(SN40-50) - 1x machine			

\*5-Axis



# MOULD ASSEMBLY LINES



# POLISHING & FINE TUNNING



22



# POLISHING & FINE TUNNING



DCM  
MOULD

23



At our Polishing Line, we use Ergonomic Polishing Machine which was designed by DCM Mould. Our Ergonomic Polishing Machine is the first machine in mould manufacturing industry.

# FINE TUNNING & DIE SPOTTING



24





DCM<sup>®</sup>  
MOULD

25

# FINE TUNNING & DIE SPOTTING

Size (mm): X:2000 Y:1500 - 150T Clamping Force



Size (mm): X:3500 Y:2500 - 300T Clamping Force



# FINE TUNNING & DIE SPOTTING



# FINAL CONTROL & TESTING



DCM  
MOULD

27



100% Circuit leak testing for cooling & heating channels, jet coolings.



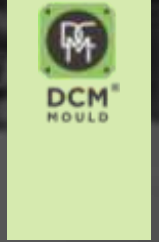
DCM<sup>®</sup>  
MOULD

28

# FINAL CONTROL & TESTING



100% Circuit leak testing for cooling & heating channels, jet coolings.



# TRIMMING TOOL PRODUCTION

# TRIMMING TOOLS

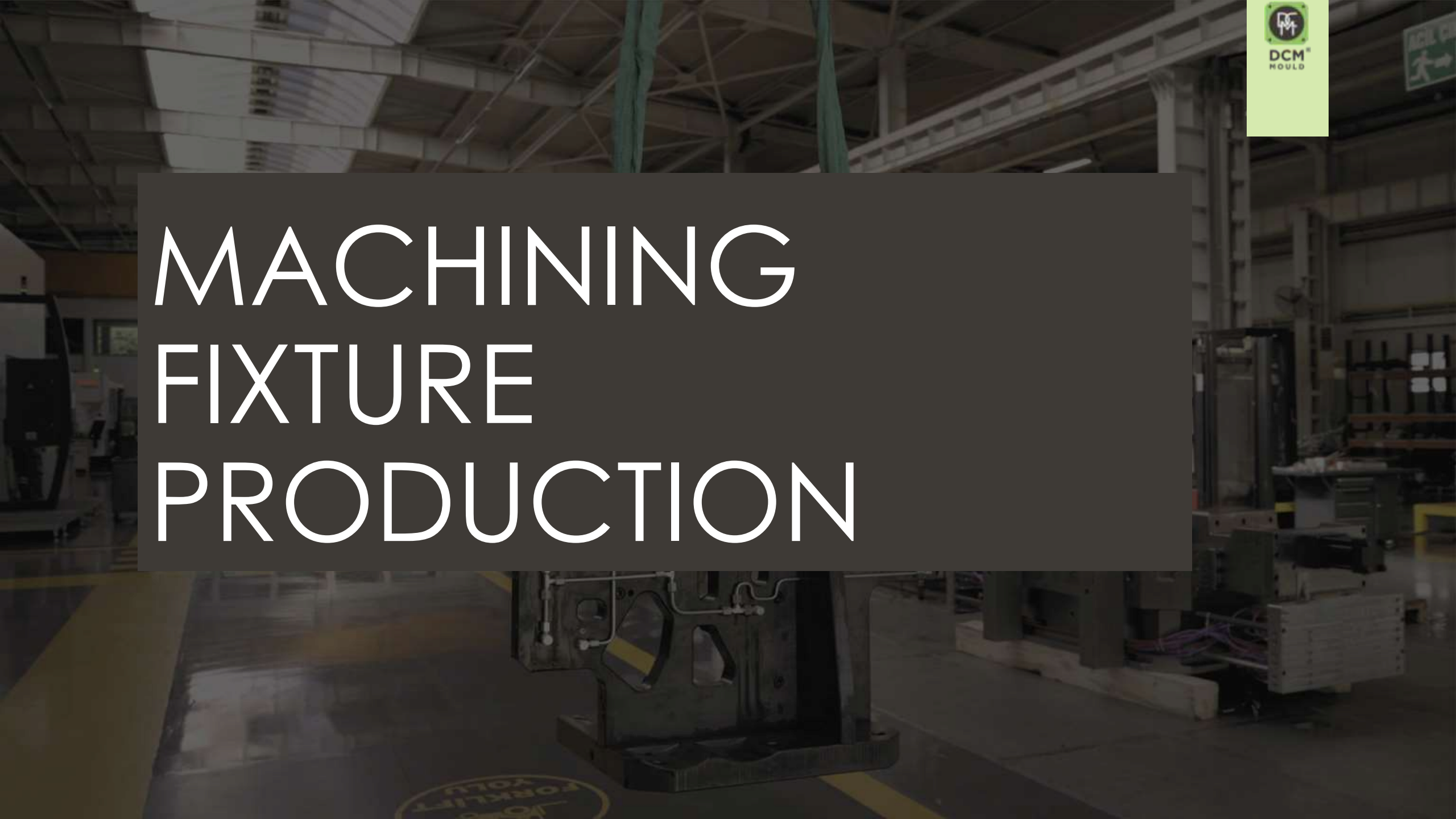


We provide sustainable quality level with our creative solutions and help our customers to run efficient production without extra deburring time.

Trimming tools available for **Aluminium & Magnesium** parts which can be produced by 4400T HPDC machines.



# MACHINING FIXTURE PRODUCTION



# MACHINING FIXTURES

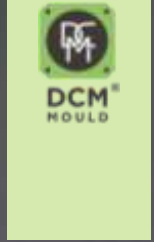


Horizontal Machining Center Hydraulic Clamping Fixture

# MACHINING FIXTURES



Design and Production are performed fully inhouse for Machining and Measurement Fixtures.

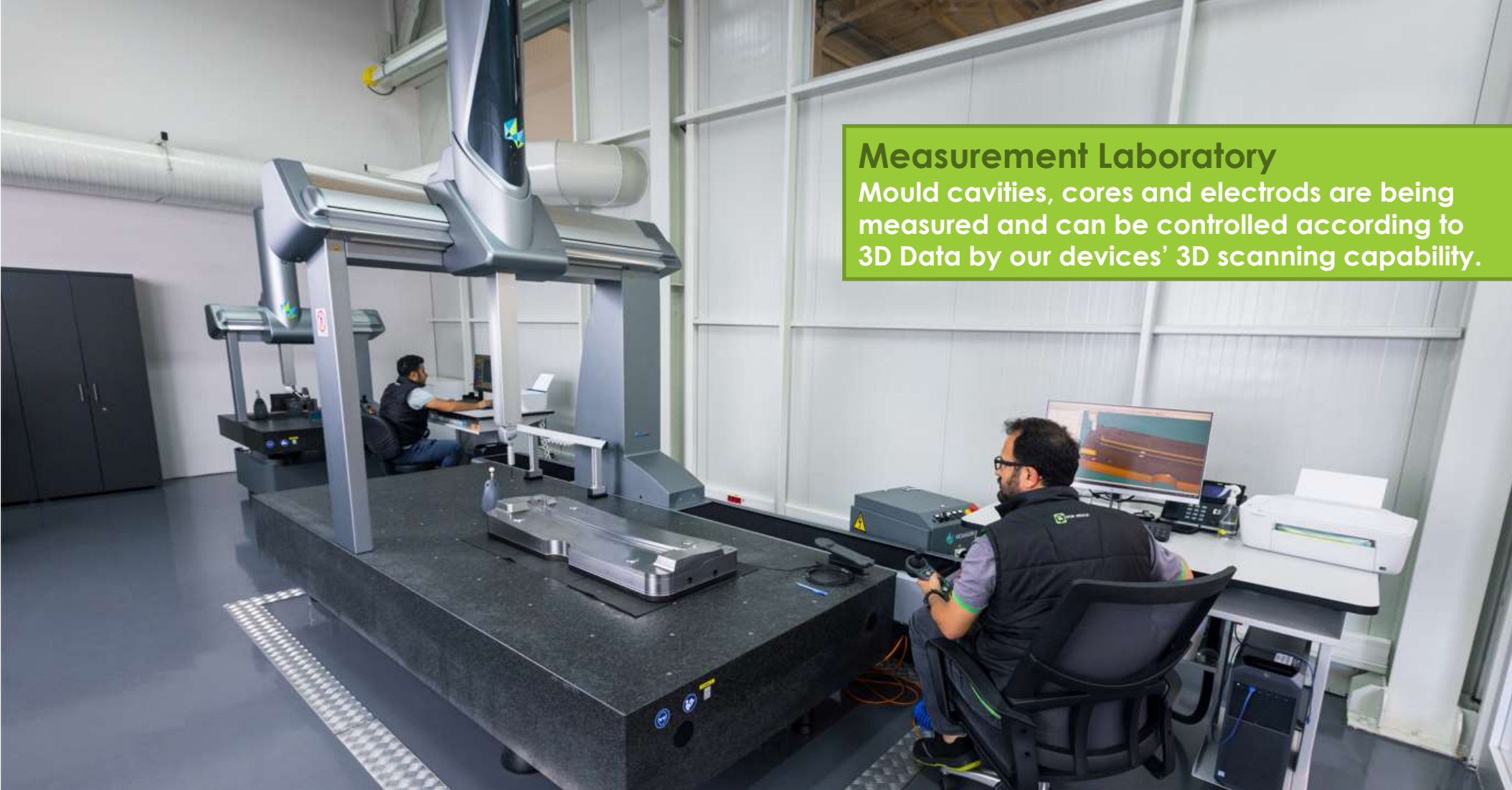


# QUALITY CONTROL & MANAGEMENT

# QUALITY CONTROL



35



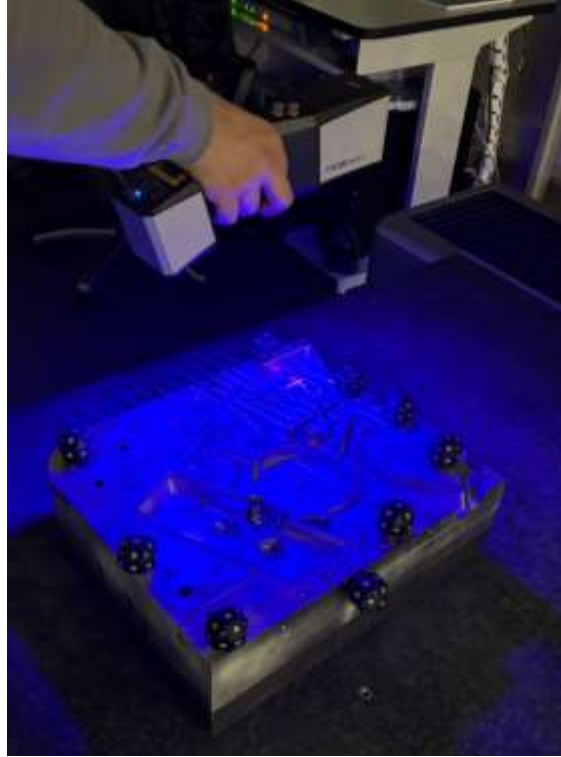
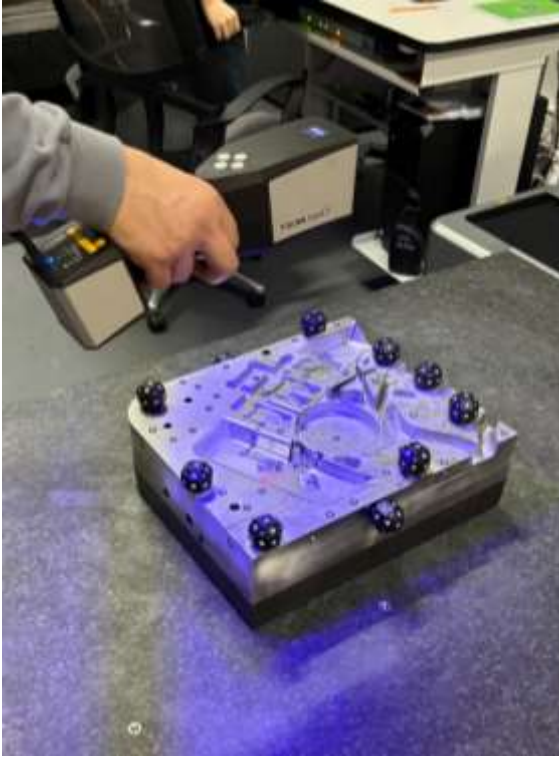
**Measurement Laboratory**  
Mould cavities, cores and electrods are being measured and can be controlled according to 3D Data by our devices' 3D scanning capability.

# QUALITY CONTROL

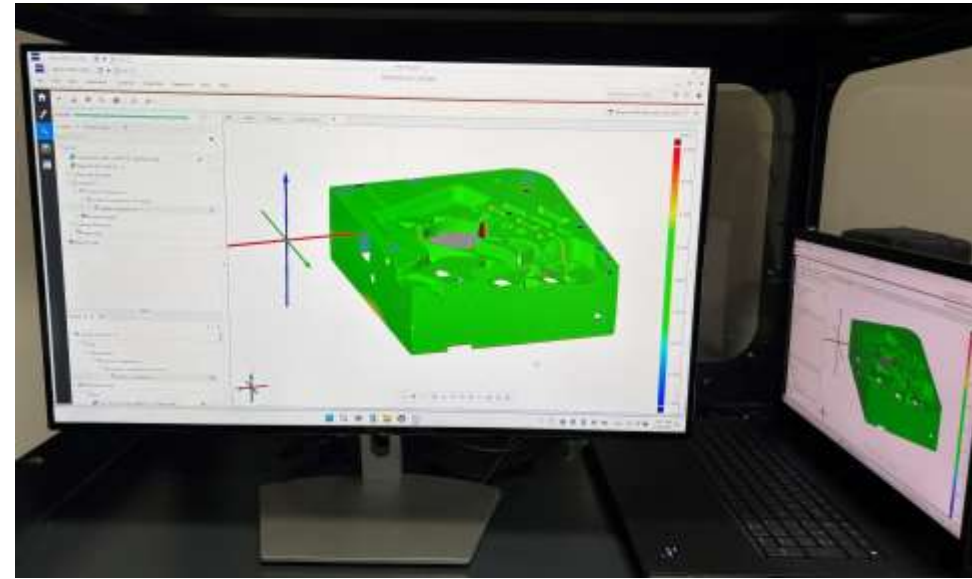


DCM  
MOULD

36



**3D Laser Scanning (Zeiss)**  
3D Portable Laser Scanning Device is available for measurements during and after machining.



# QUALITY MANAGEMENT SYSTEM



DCM  
HOULD

37



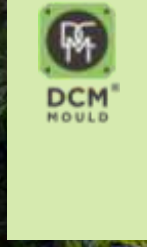
**ISO 9001: 2015**  
Quality System  
Management



**ISO 14001:2015**  
Environmental  
System  
Management



**ISO 45001:2018**  
Occupational  
Health & Safety  
Management



DCM Kalip İmalat San. ve Tic. A.Ş.

Thank you.  
Hope to welcome you  
at our garden next time!