

Your trusted partner  
today and in the future



 **MAPROME**



Mapromec is a contract manufacturer of tight-tolerance cylindrical parts with strict material and surface finish requirements.

Our mission is to be the world's leading provider of piston pins, rollers, bearing parts and assembly services.

# Mapromec

Mapromec's production is highly automatized and we are forerunners in utilizing robotics. Our carefully selected machinery enables us to respond to extremely tight tolerance requirements. We manufacture our products in our production facilities in Sepänkylä, Mustasaari.



# Mapromec

Quality is the foundation of our operations. With the Magnaflux® particle inspection method, we perform 100 % quality assurance on parts of up to 250 kilograms in weight. We perform ultrasonic immersion inspection both automatically and manually. Automated devices have been integrated into robot cells. Manual testing is performed with the latest technology, ultrasonic immersion testing.

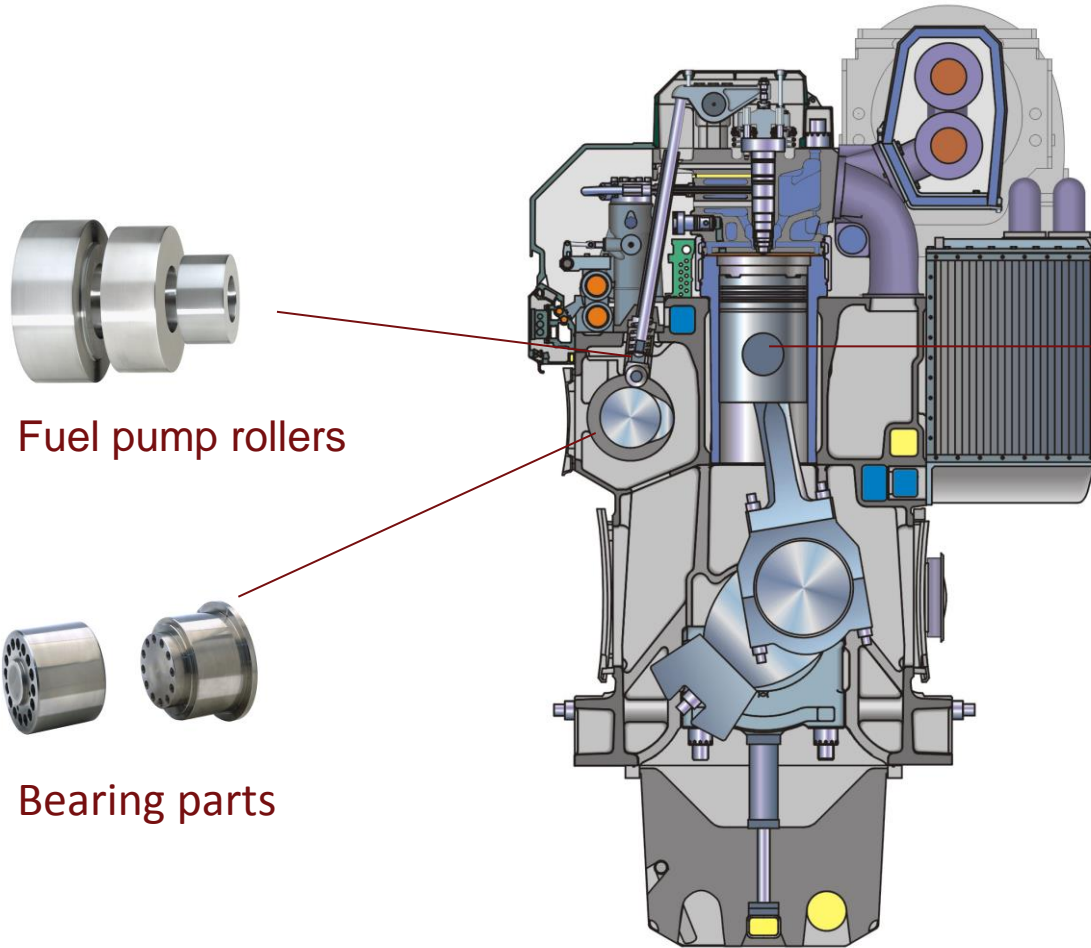


# Mapromec

Our surface treatment method enables us to respond to extremely strict surface quality requirements. The method also results in the correct cylinder-like shape and straightness. Our surface treatment is the outcome of years of process development and results in the best surface finish in the world.



# The components we deliver

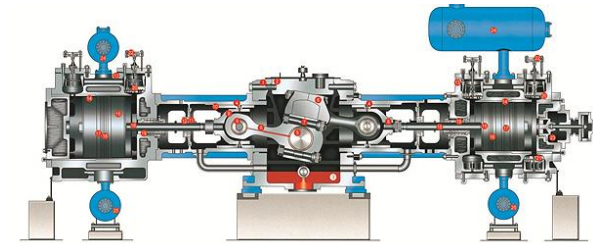


Fuel pump rollers

Bearing parts



Piston pins for methanol, diesel and gas engines



Crosshead pins for compressors

## The fields we serve

We serve customers in the fields of shipbuilding and energy. Our customers include some of the leading engine manufacturers in the world.

We manufacture components for challenging sites such as nuclear power plants that produce energy for some of society's most critical functions. We have obtained the expertise for providing the extensive documentation and the high quality these sites require through years of experience.

Our latest, rapidly growing business segment is compressors for the energy industry.



# We serve all over the world



We are suppliers for some of the global leaders in engine manufacturing and energy technology

## We export to

- USA
- India
- China
- Korea
- Italy
- UK
- The Netherlands
- France
- Germany
- Norway
- Sweden



# Our services

Mapromec provides customers several services that support our product manufacturing.

## Procurement

We assist customers in choosing and purchasing all necessary components and in finding the right suppliers. Our supply and purchase services lower the end costs for our customers.

## Assembly

We assemble units of just about any size in our modifiable assembly space. We provide a turnkey service by either purchasing or manufacturing the components.

## Logistics

Our trained staff handle logistic arrangements and related documentation from our in-house dispatch department where each product goes through human inspection. Sets are delivered straight to the customer's production line.

Our services are carried out in our production facilities in Lintuvuori, Mustasaari, only about 3 kilometers from our Sepänkylä facilities.

## Our quality

We take pride in our quality assurance methods. Quality control is a part of all our work phases and we constantly monitor it through internal inspections and audits. We obtained the ISO 9001 quality certificate in 1996 and the ISO 14001 environment certificate in 1998.



# Our quality

## Our quality assurance methods include

### Particle inspection

With the Magnaflux® particle inspection method, we perform 100 % quality assurance on parts of up to 250 kilograms in weight.

### Ultrasonic inspection

We perform ultrasonic inspection both automatically and manually. Automated devices have been integrated into robot cells. Manual testing is performed with the latest technology, ultrasonic immersion testing.

### Measuring services

Our extremely tight-tolerance components are measured with the appropriate equipment by our regularly trained personnel.

### Documentation

We document even the most detailed parts of our processes. We have the required expertise for delivering components to challenging sites like nuclear power plants where the magnitude of needed documentation is at an extreme level.

### Traceability

Traceability is a significant part of quality assurance. We add our own data matrix stamps and codes to our products. The data is transferred to our electronic database for monitoring the product's life cycle.

# The foundation of our success

## Personnel

Our highly skilled, highly trained staff not only create our quality products but do so while maintaining work safety and implementing our company values.

## Financial stability

We aspire to foster the profitable growth and the financial stability of our company in order to ensure its further development and the necessary investments.

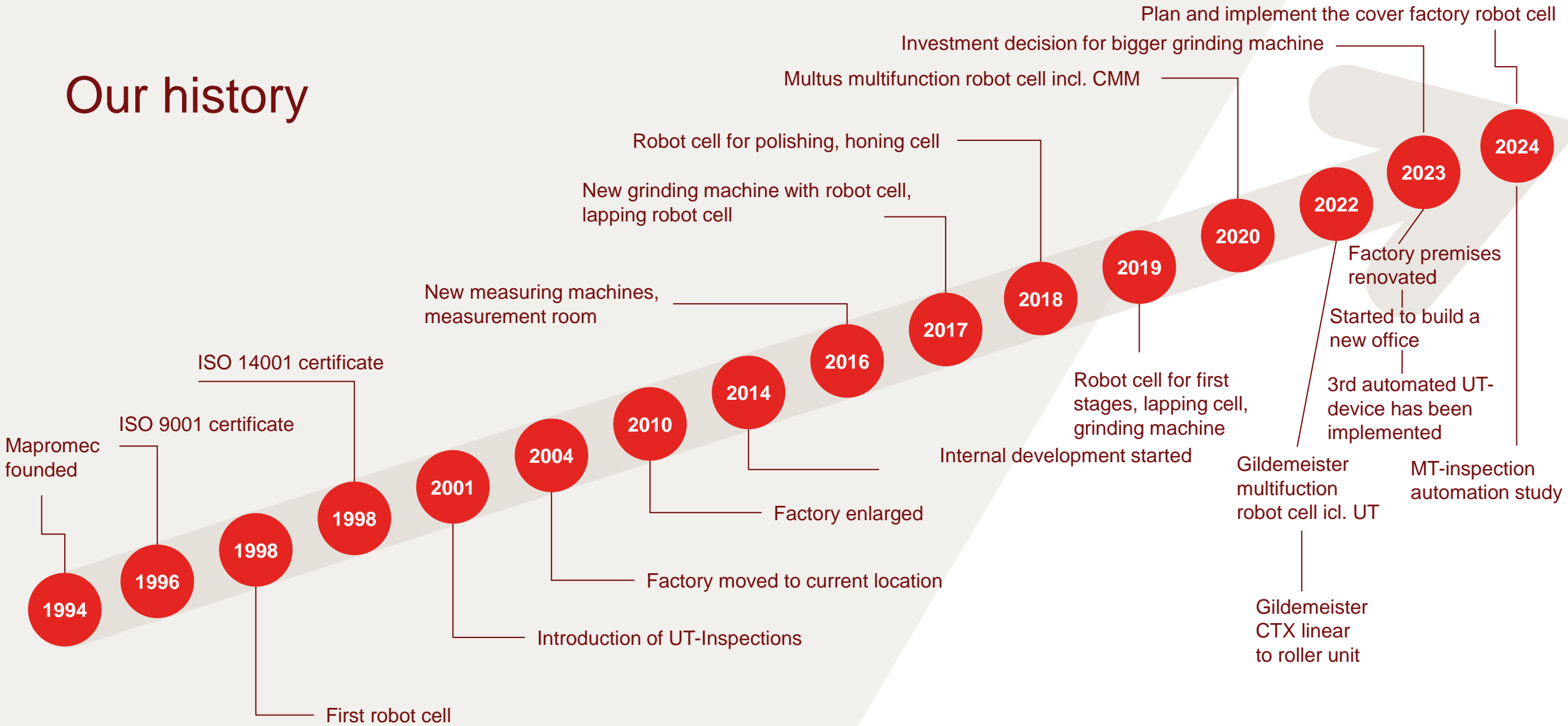
## Customers

Our customers are our employers. We want to bring them added value through our own knowledge and experience. We commit to being an excellent partner for our customers in terms of reliability, knowledge and responsiveness – before, during and after purchases.

## Environment

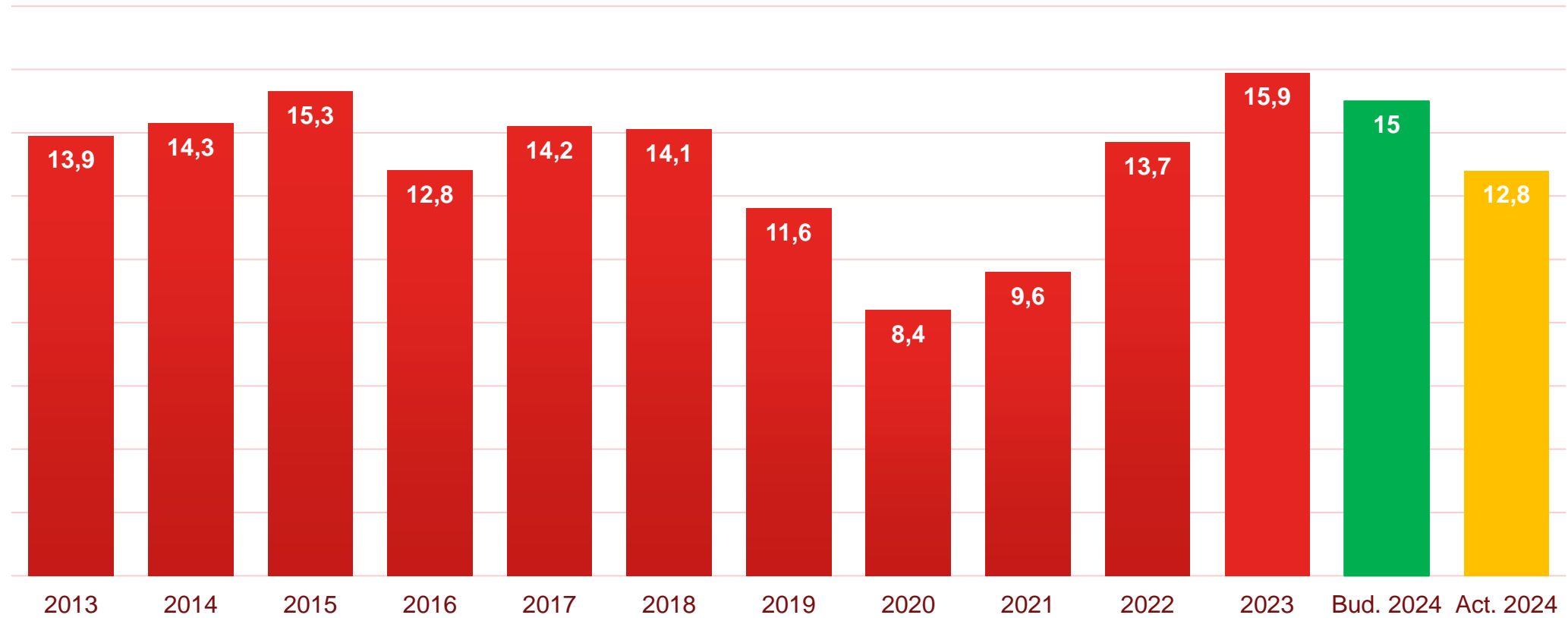
We constantly develop the environment-friendliness of our production processes and our operations with concrete actions. Reducing our environmental impact is a part of meeting our corporate responsibility commitments.

# Our history

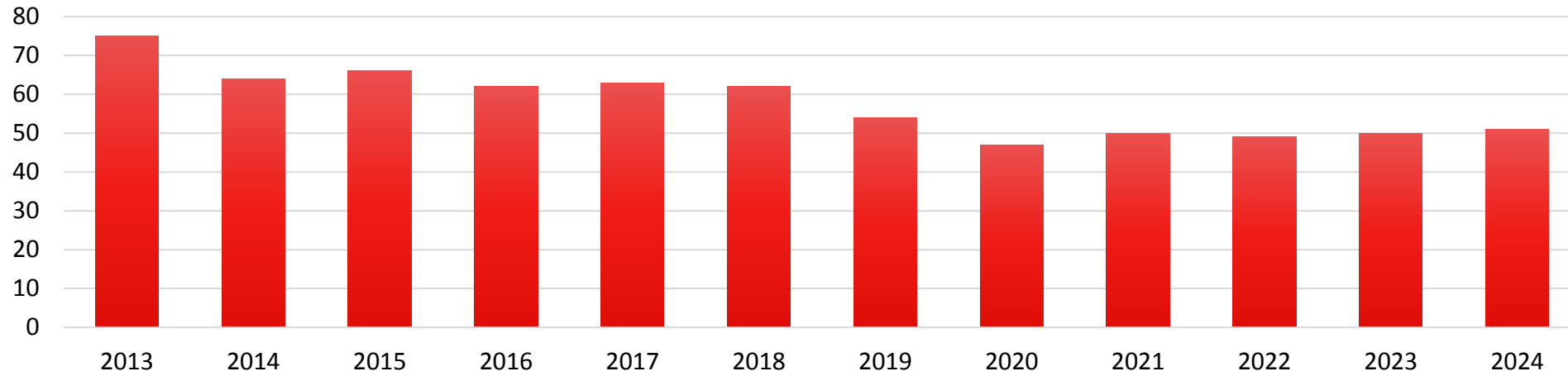




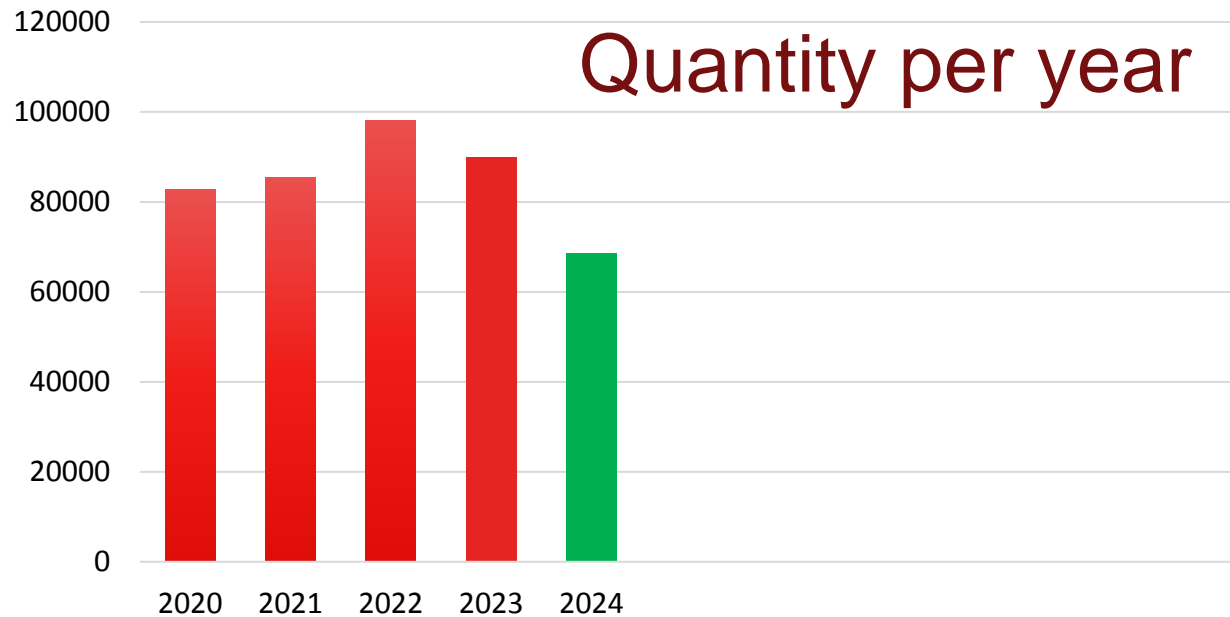
# Turnover M€



# Personnel

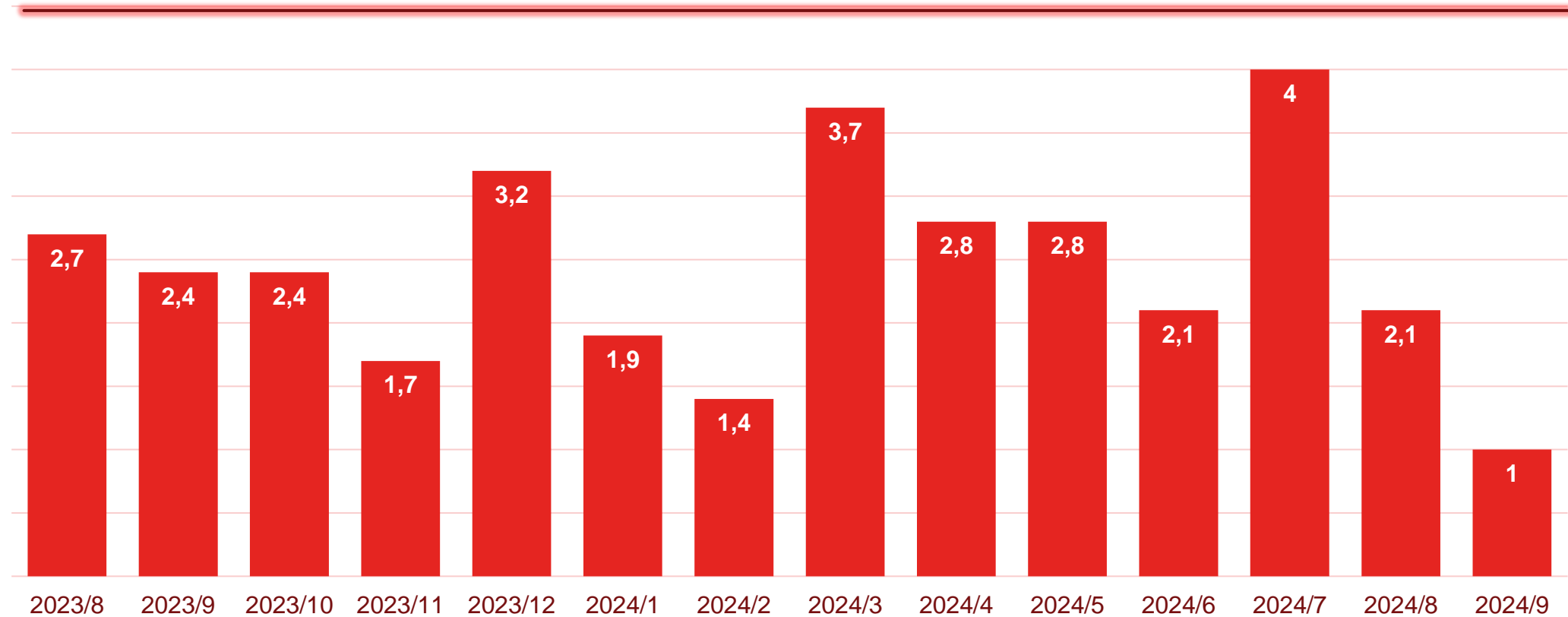


# Quantity per year

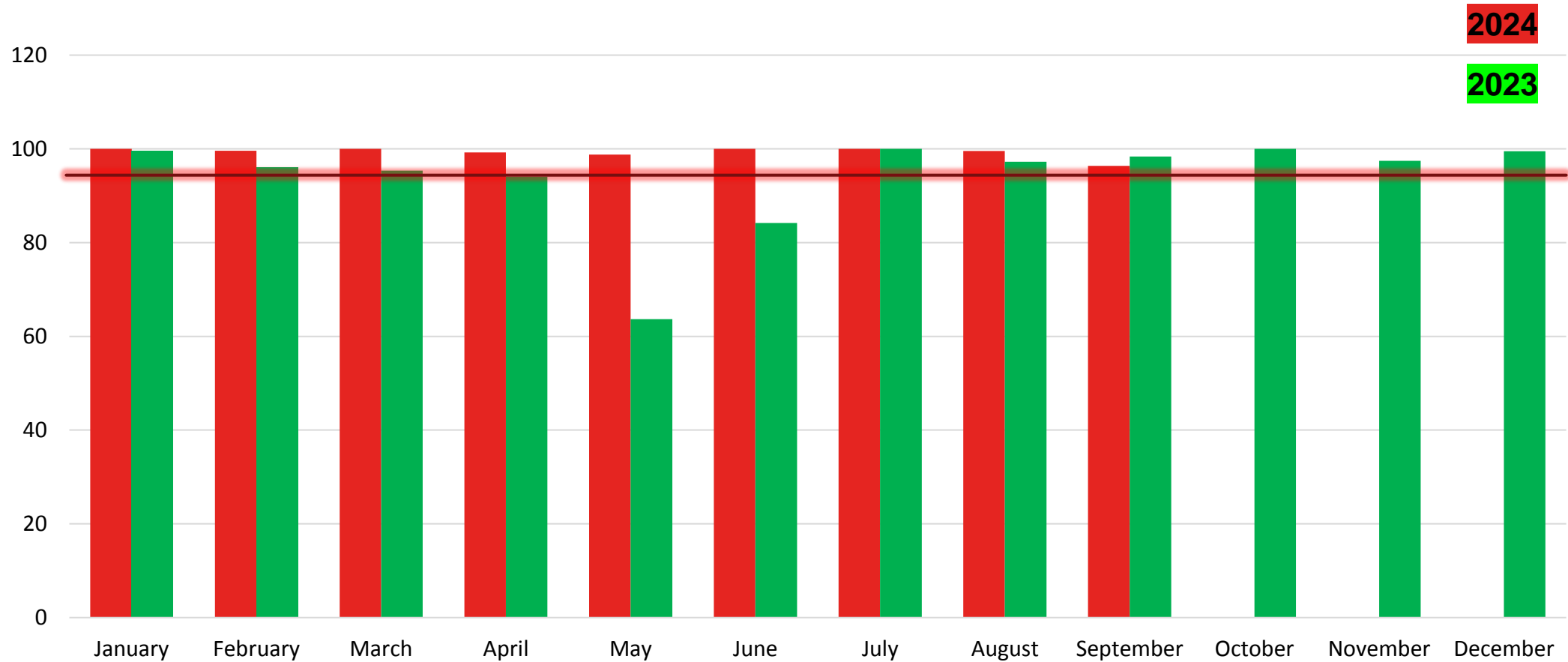




# Order confirmation, average days



# Delivery reliability



# Our organization

## Management & Sales

Tapio Kaunismäki  
+358 10 229 0159

## Sales & Order Handling

Eva Pensar  
+358 10 229 0161

Eeva-Leena Rabb  
+358 10 229 0164

## Production & Purchasing

Anders Kronstrand  
+358 10 229 0156

Kari Jokela  
+358 10 229 0172

## Finance

Leif Enberg  
+358 10 229 0152

## Production Development

Jari Kuljunlahti  
+358 10 229 0157

Kristian Back  
+358 10 229 0162

## Cover Factory

Kristian Holmberg  
+358 10 229 0166

## Quality

Johan Sandelin  
+358 10 2290 177



**E-mails:** [firstname.lastname@mapromec.fi](mailto:firstname.lastname@mapromec.fi)

## Oy Mapromec Ab

Teollisuustie 10  
65610 MUSTASAARI  
FINLAND

+358 10 2290150  
[orders@mapromec.fi](mailto:orders@mapromec.fi)

Your trusted partner today  
and in the future

