

**PRESS RELEASE****FOR IMMEDIATE RELEASE****DATE: 28/10/2022**

Niamh Adams

Marketing Coordinator

Sonomatic Ltd

Niamh.Adams@sonomatic.com

**SONOMATIC LIMITED COMPLETES ASSET PURCHASE OF INNOSPECTION**

Sonomatic Limited is pleased to announce it has completed the asset purchase of Innospection Group. This purchase includes all assets and IP, along with the employment of all active personnel from the former Innospection Group.

The acquisition of Innospection's technology and equipment adds patented MEC™ (Magnetic Eddy Current) technology to Sonomatic's portfolio of unique inspection technology. Additionally, a further array of deployment tools including, MEC™ Floorscanners, MEC™ Pipescanners, MEC™ Splash Zone scanners and MEC™ subsea scanners. These significantly extend Sonomatic's selection of asset care solutions.

Sonomatic General Manager, Alex Cesan, said: "Over the years, we have always admired Innospection as a specialist inspection provider. Innospection has shared a similar passion to solve challenging inspection solutions above and below the water line. We share a problem-solving and collaborative culture. We are excited to bring together our technologies, widening our world-leading portfolio of inspection technologies and equipment".

Innospection's Managing Director, Geoff Fisher, commented: "Sonomatic's purchase of Innospection Group's Assets and MEC™ IP Portfolio, unlocks significant opportunities for the new Division. Bringing together, as it does, two teams with a shared passion for providing clients with leading edge solutions to their asset integrity and inspection challenges. Sonomatic's deep knowledge and experience of inspection technologies, software development and robotic engineering solutions, underpinned by its extensive patent portfolio, will enable the full potential of MEC™ technology to be realised to the benefit of both our existing and new clients".

The acquisition of Innospection is an exciting new venture for Sonomatic. Expanding our inspection technologies and equipment, as well as our passionate team, works perfectly for the natural progression and growth of the business.

**END**

Innospection are a provider of advanced inspection services for the integrity and lifetime assessment support for the Energy (onshore and offshore (topside, splash zone and subsea)), Utilities, Defence and Food and Drink (Distilling) Sectors. They offer innovative and unique solutions to solve standard and niche inspection challenges. In addition, the Group has sole ownership of an extensive portfolio of Patents in respect of MEC™ (Magnetic Eddy Current Technology) tooling and its method of application.



Sonomatic specialises in the design, development, and application of NDT inspections, and combines this with data science and cutting-edge integrity engineering capabilities to provide clients with a world-class inspection service.

Through the in-house development of bespoke inspection equipment, software and robotics, Sonomatic resides as the global market leader for ROV-deployed subsea inspection and Non-Intrusive Inspection (NII) technologies.

# INNOSPECTION

## HISTORY

Since 1998, Innospection has delivered advanced Non-Destructive Testing (NDT) services and solutions to the worldwide process industries including the onshore and offshore Oil & Gas industry, refineries, petrochemical and power plants.

Originally established as Kontroll Technik UK with the focus in specialised Eddy Current inspection services, the company was based in Rugby to support the chemical engineering and nuclear power industries where Multiple Frequency Eddy Current technique for heat exchanger and boiler tube inspection first gained recognition and acceptance.

With the technical application development of the SLOFEC™ technique for fast corrosion screening through the protective coatings, the company expanded its service portfolio to include storage tank, pipes and pressure vessel inspection.

In 2005, the company name was changed to Innospection to better represent its drive to bring innovation to the advanced NDT business.

In 2006, the company moved its main operational base to a larger premises and workshop facility in Aberdeen. This was motivated by a strong commitment to service the Oil & Gas industry which is also the most dynamic in seeking solutions to technological challenges.

From 2008, Innospection further expanded its inspection service portfolio to the offshore and subsea infrastructures. Innovative solutions and equipment have been developed by an internal R&D team to solve niche inspection challenges for flexible and rigid risers, caissons, conductors, subsea structures and pipelines, mooring lines as well as complex areas like subsea welds and manifolds.

Innospection's reputation for expertise in the NDT market has facilitated increasing global demand over the years. Global subsidiary offices have been set up to serve the demanding global market. An international partner network has also been set up to support the direct communication with clients in the areas where we are not directly located.

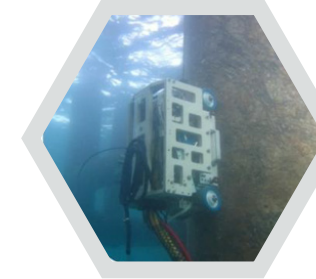
## HEAT EXCHANGER & BOILER TUBE INSPECTION TECHNIQUES

For the in-service inspection of ferromagnetic and non-ferromagnetic tubes, the following advanced techniques offer a high resolution and defect detection capability with accurate defect analysis:

- Multiple Frequency Eddy Current
- Magnetic Biased Eddy Current
- Remote Field Eddy Current
- Rotating Eddy Current

For the inspection of ferromagnetic tubes, the Magnetic Biased Eddy Current technique offers fast and reliable screening while the Remote Field Eddy Current technique is used to detect thinning, large volumetric defects and as a verification to Magnetic Biased Eddy Current.

## MEC™ - MAGNETIC EDDY CURRENT TECHNIQUE



MEC™ (Magnetic Eddy Current) is the next generation and a further development of the industry proven, fast corrosion screening SLOFEC™ technique.

MEC™ is a dynamic electromagnetic technique that operates on a high frequency Eddy Current field with a controlled direct current magnetic field and specially developed sensors to achieve a high sensitivity in the detection of pitting and corrosion defects in ferromagnetic and non-ferromagnetic materials including through various types of coatings.

By utilising the superimposed direct current magnetisation, the depth of penetration is increased to such an extent that internal defects can be detected from the external surface.

The specially developed Eddy Current sensors are not only capable of generating a higher density Eddy Current field for increased defect detection sensitivity but also enable the measurement and adaptation of the magnetic field strength.

By analysing and controlling the magnetic field strength to operate at the retentivity point of the hysteresis curve and combining it with higher

operating frequencies and improved signal to noise ratio, the MEC™ technique offers enhanced inspection capabilities including the detection and sizing of internal and external defects at a higher wall thickness and coating range.

The MEC™ technique is applied to most of Innospection's next generation topside, splash zone and subsea inspection tools for integrity and lifetime assessment support:

### Topside Inspection Tools

- MEC™-Floorscanners for storage tank inspection
- MEC™-Pipescanners for pipeline and pressure vessel inspection

### Splash Zone Inspection Tools

- MEC™-MPS Marinised Scanners

### Subsea Inspection Tools

- MEC™-Combi Crawlers for subsea inspection
- MEC™-Hug Crawlers for flexible riser, umbilical and mooring line inspection



# SECTORS & SERVICES

## SERVICES



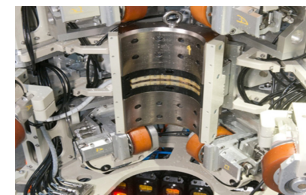
**ONSHORE & TOPSIDES  
INSPECTION**



**SPLASH ZONE &  
SUBSEA INSPECTION**



**PIPELINE INSPECTION**



**R&D SOLUTIONS**

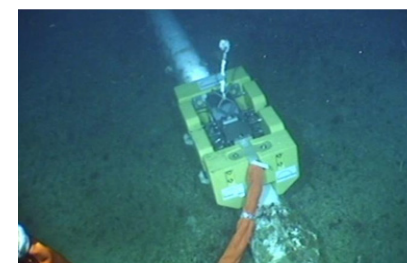
## EQUIPMENT - MEC™ TECHNOLOGY



**MEC™ - MPS200+ SCANNER**



**MEC™ -COMBI CRAWLER**



**MEC™ -COMBI PIPECRAWLER**



**MEC™ FLOORSCANNERS**



**MEC™ PIPESCANNERS**



**MEC™ -HUG CRAWLER**

# CONTACTS

## EUROPE AND AFRICA

### Graham Marshall

Subsea Project Manager  
T: +44 (0) 1224 823 960  
E: Graham.Marshall@sonomatic.com

### Stuart Ley

Topside Project Manager  
T: +44 (0) 1224 823 960  
E: Stuart.Ley@sonomatic.com

### Danielle Gunns

Project Delivery Manager (Warrington)  
T: +44 (0) 1925 414 000  
E: Danielle.Gunns@sonomatic.com

### John Lilley

Senior Technical Consultant  
T: +44 (0) 1925 414 000  
E: John.Lilley@sonomatic.com

## AUSTRALASIA

### Jonathan Millen

Australia West Coast Project Manager  
T: +61 415 850 346  
E: Jon.Millen@sonomatic.com.au

### Judd McCann

Australia East Coast Project Manager  
T: +61 488 442 019  
E: Judd.McCann@sonomatic.com.au

### Zach McCann

South East Asia Regional Manager  
T: +61 404 797 670  
E: Zach.McCann@sonomatic.com.my

### Alex Cesan

Australia & South East Asia General Manager  
T: +61 498 442 666  
E: Alex.Cesan@sonomatic.com.au

## AMERICAS

### Esteban Cesan

General Manager Americas  
T: +1 832 977 0303  
E: Esteban.Cesan@sonomatic.com

## MIDDLE EAST

### Gordon Reid

Regional Manager  
T: +971 26 580 708  
E: Gordon.Reid@sonomatic.com

## INNOSPECTION

### James Druce

Senior Operations Manager  
T: +44 (0) 7552 433 733  
E: J.Druce@innospection.com

### Mike Churchill

Technical Authority & Manager  
T: +44 (0) 7515 067 900  
E: M.Churchill@innospection.com